

God belongs to no one, yet to all — and so does this space. It rises from the site's living heritage of unity, love, and shared harmony, transforming resilience into a collective strength. At its heart, water becomes the catalyst — a force of purity, renewal, and connection dissolving divisions and binding people together in a bold declaration that the sacred is universal. "JOURNEY OF TRANSCENDENCE" envisions a sacred space where faith unites rather than divides. Inspired by Jamia Masjid Beech Wali's Saddar Karachi Pakistan spirit of coexistence, water flows as a symbol of purity and connection. The architecture embodies compassion, healing, and divine unity — reminding humanity that we were always meant to be one.

"ALL RELIGION MUST BE TOLERATED FOR EVERY MAN MUST GET TO HEAVEN IN HIS OWN WAY."
EPICTETUS

सत्य एक है, बुद्धिमान लोग उसे अनेक नामों से पुकारते हैं।

Iha nā kahō ki vēda, bā'ibala atē kurāna jhūthē hana. Jō inhā tē vicāra nahī karadē, uha jhūthē hana.

"Let us walk together, speak together, and let our minds be of one accord."
ATHARDA VEDA

"For we were all baptized by one Spirit so as to form one body—whether Jews or Gentiles, slave or free—and we were all given the one Spirit to drink."

CONCORD

"There is no compulsion in religion. Truth stands out clear from error."
AL-QURAN

بِسْمِ الرَّجَائِلِ
بِاسْمِهَا، عَن
تَأْكُلُكَ بِأَثْمِهَا

UNIVERSALITY

C
O
N
N
E
C
T
I
O
N



"The people are partners in three things: water, pasture, and fire."

SITE PLAN



JOURNEY OF TRANSCENDENCE:

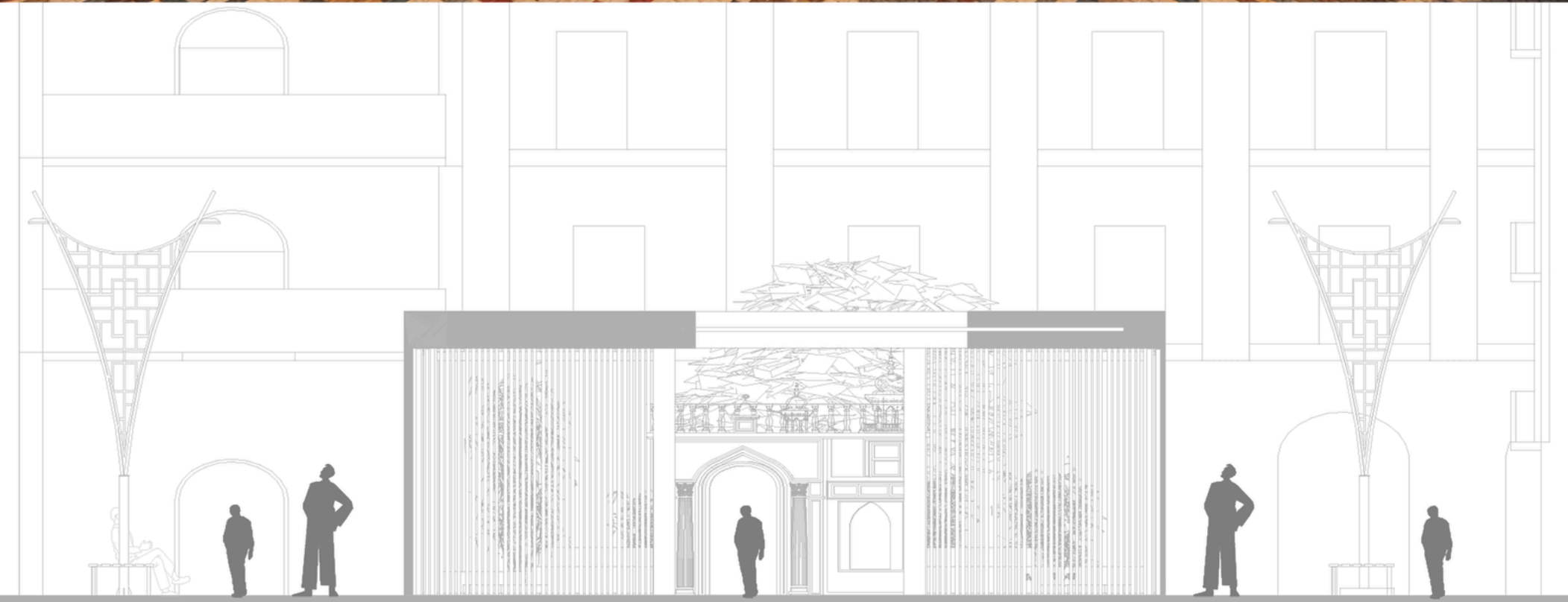
Site: Beech wali Masjid (Marwari lane)
Karachi Saddar

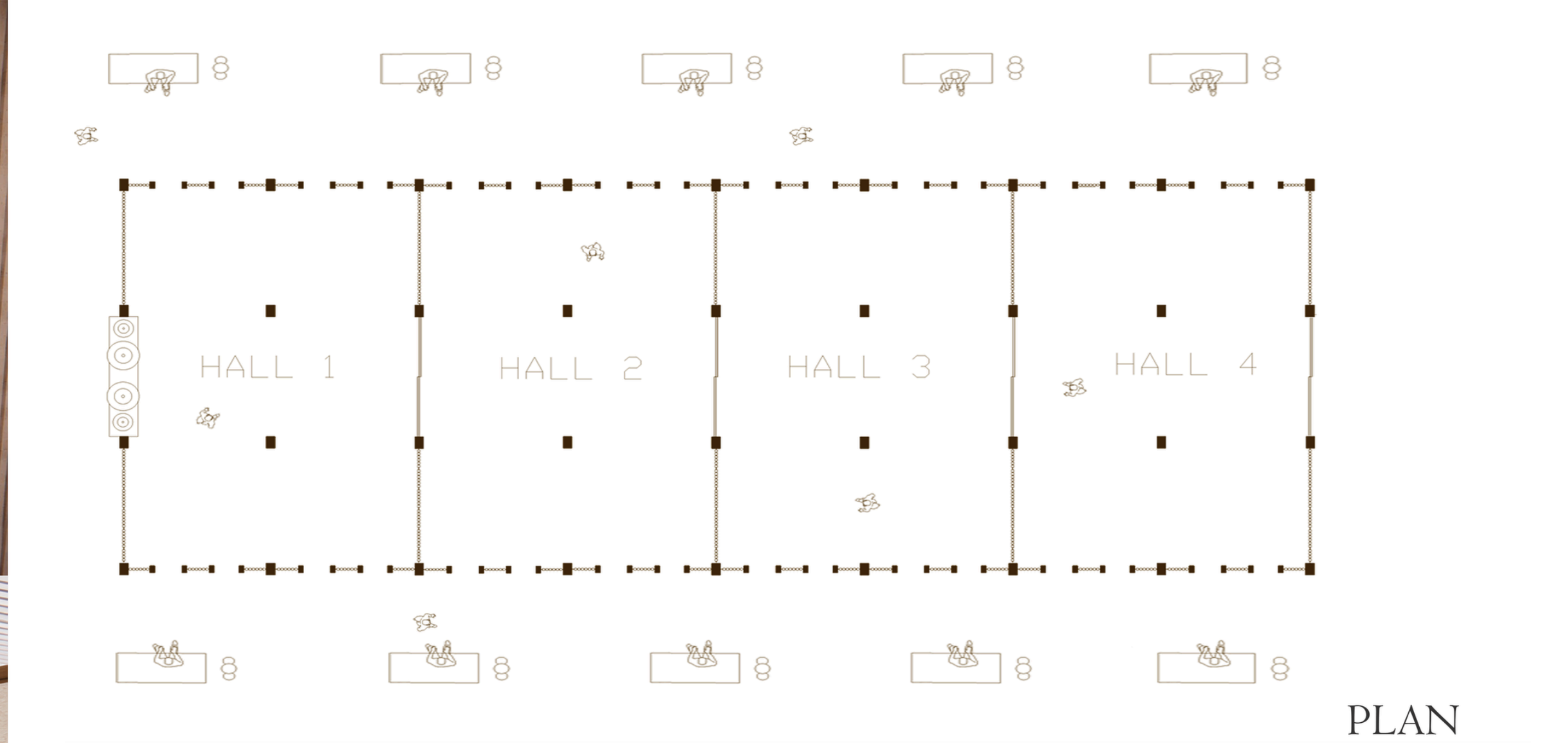
A shared multifaith space where people of all beliefs come together in equality, reflection, and dialogue without hierarchy or separation. The architecture becomes a neutral ground for coexistence, learning, and collective wellbeing.



A place where faith unites rather than divides. The Multifaith Hall fosters dignity, inclusion, and resilience, embracing the belief that the divine exists within every human being. Together with the revitalized Beech Wali Masjid facade, the proposal celebrates Marwari's architectural heritage while shaping a more cohesive and culturally enriched community. At its heart, a continuous flowing water element binds all spaces together, symbolizing love, purity, and shared humanity. It guides movement, creates gathering edges, and naturally encourages interaction turning everyday encounters into moments of connection. More than a structure it is a community bridge where water, space,

SECTION





PLAN

The Multifaith Hall serves as a shared place of worship, fostering a profound connection between people and the Divine beyond religious boundaries. More than a spiritual sanctuary, it is a vibrant community space where people gather to celebrate, reflect, interact, and belong. Designed to encourage moments of peace, dialogue, and togetherness, the hall transforms everyday living into an experience of shared humanity, making it a place not only to pray, but to sit, connect, celebrate, and cherish every moment.

