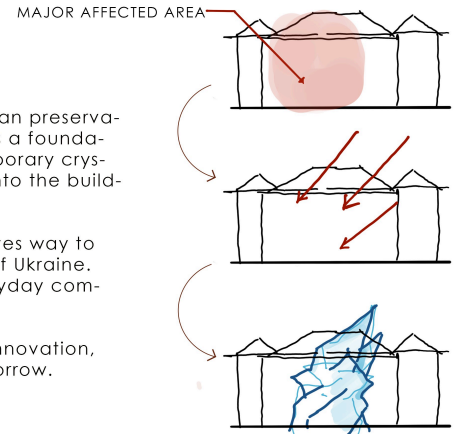


# PAVLOV CITY HOUSE

Every city carries its memories in stone. When war fractures those stones, architecture becomes more than preservation—it becomes an act of healing. The Pavlov City House stands not as a monument to the past, but as a foundation for the future. Its restored Corinthian architecture preserves the identity of Kharkiv, while a contemporary crystalline intervention symbolizes resilience emerging from history. Capturing light and breathing new life into the building, it represents hope born from adversity.

Inside, a monumental relief wall narrates the journey from destruction to restoration. Broken masonry gives way to skilled hands, while a monumental female figure embodies memory, resilience, and the enduring spirit of Ukraine. The museum preserves history, the library fosters learning, the café and co-working spaces support everyday community life, and AR/VR experiences connect the past with future generations.

More than restoring a building, the project restores a city's confidence. It demonstrates how heritage, innovation, and community can coexist, proving that every act of rebuilding creates a stronger foundation for tomorrow.



# RESTORE. RENEW. RECONNECT.

The project transforms the historic Pavlov City House into a living cultural landmark. By restoring its heritage fabric and introducing a contemporary intervention, it creates spaces for memory, education, collaboration, and public life, ensuring the building remains relevant for future generations.



**MUSEUM-**  
A SCULPTURAL TIMELINE CELEBRATING MEMORY, RESILIENCE, AND THE COLLECTIVE REBUILDING OF KHARKIV.



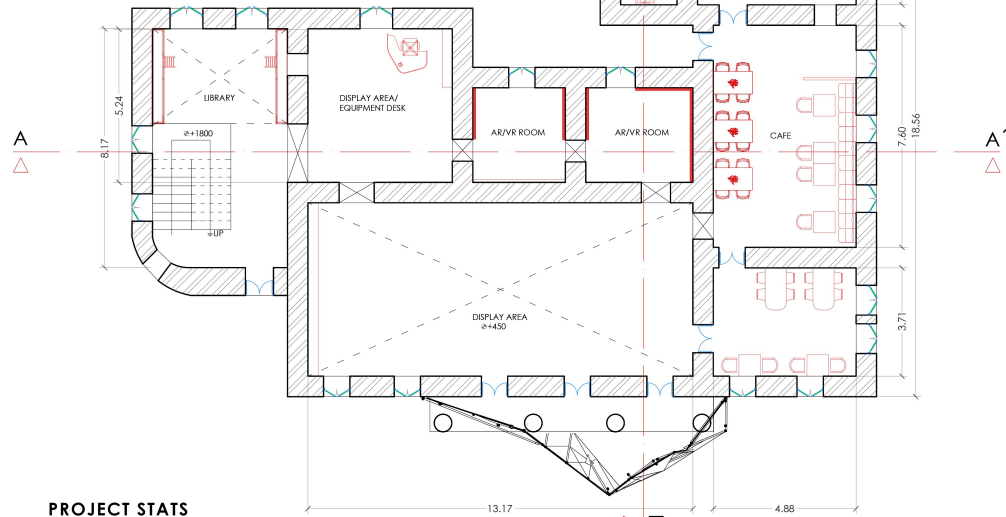
**LIBRARY-**  
PRESERVING THE PAST, EMPOWERING THE FUTURE



RELIVING HERITAGE THROUGH AR/VR



**N**  
SCALE 1:100  
PLAN AT 900MM



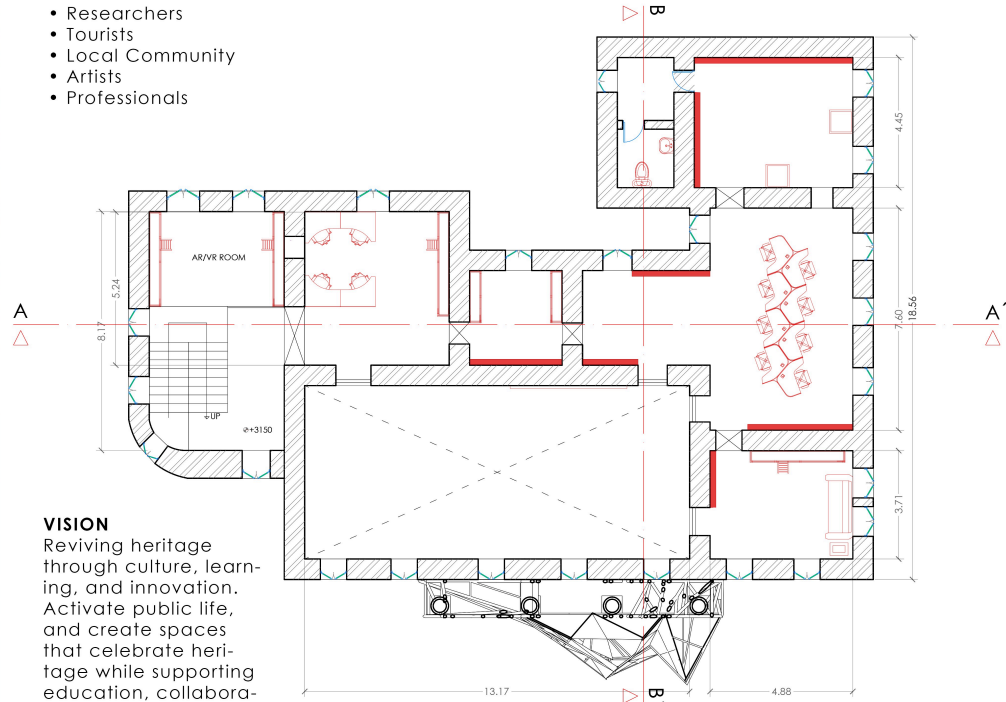
GROUND FLOOR PLAN

**PROJECT STATS**

Site Area: 368 m<sup>2</sup>  
Built-up Area: 736 m<sup>2</sup>

**TARGET USERS**

- Students
- Researchers
- Tourists
- Local Community
- Artists
- Professionals



FIRST FLOOR PLAN

**VISION**

Reviving heritage through culture, learning, and innovation. Activate public life, and create spaces that celebrate heritage while supporting education, collaboration, and cultural exchange.

# REMEMBER. REBUILD. REIMAGINE.

The design builds a dialogue between history and the future. Original architectural elements are carefully restored, while a contemporary intervention introduces light, energy, and new public experiences. Together, they create spaces that preserve collective memory, celebrate resilience, and encourage learning, collaboration, and cultural exchange for generations to come.



**CAFE -**  
A warm, community-driven space where heritage, conversation, and everyday life reconnect.

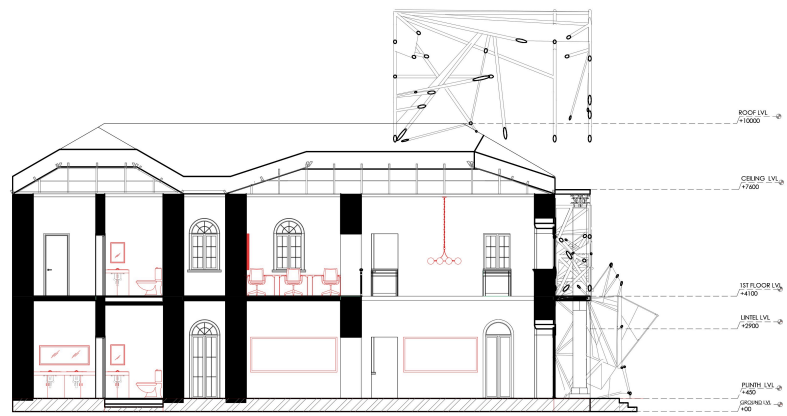
NEED	RESPONSE	OUTCOME
Heritage Conservation	Sensitive Restoration	Preserved Identity
Community Engagement	Café + Public Spaces	Social Interaction
Knowledge Sharing	Library + AR/VR	Cultural Learning
Creative Economy	Coworking Studio	Innovation Hub
Urban Revitalization	New Public Realm	Vibrant Landmark



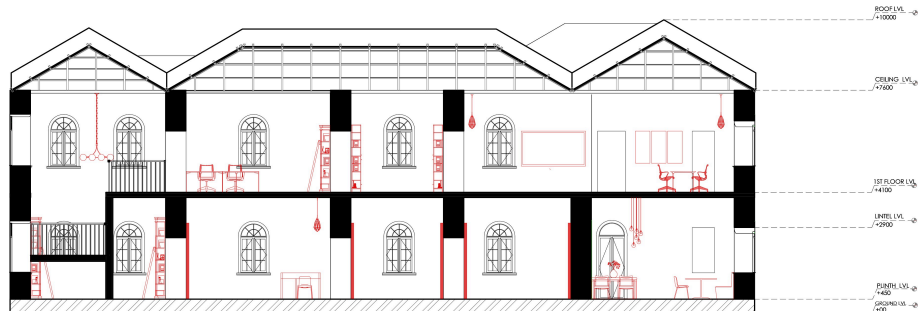
**COWORKING STUDIO -**  
WHERE HERITAGE INSPIRES INNOVATION AND COLLABORATION.



**N**  
SCALE 1:100

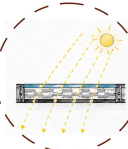


SECTION BB'

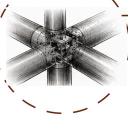


SECTION AA'

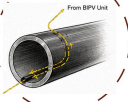
**BIVP Laminated Unit:**  
High-efficiency monocrystalline silicon cells integrated within laminated safety glazing for on-site renewable energy generation while maintaining controlled daylight transmission.



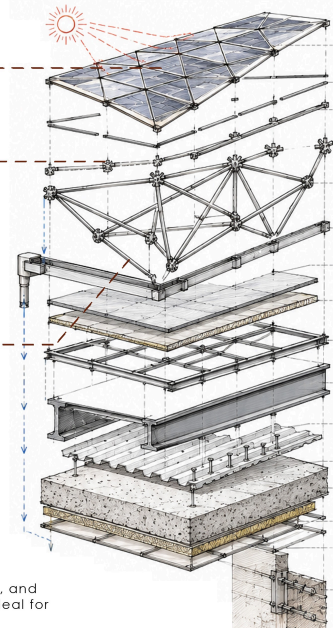
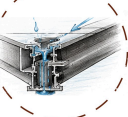
**CNC-machined concealed node** providing flush structural intersections and seamless glass-to-steel integration with concealed fixing technology.



**Concealed DC wiring** integrated within hollow structural members, routing generated power to building-side inverters without visible cabling.



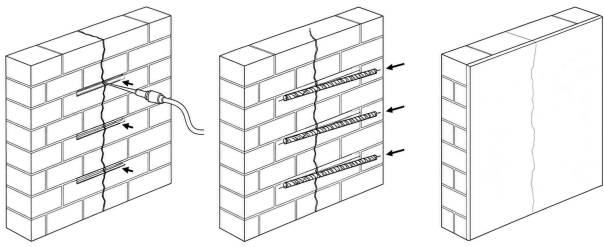
**Concealed structural gutter** with EPDM pressure gasket providing multi-angle drainage, condensation collection, and controlled rainwater management.



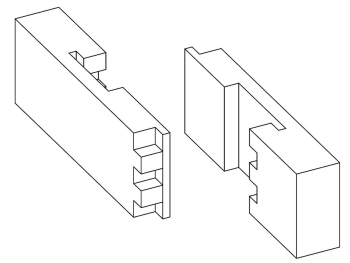
- Photovoltaic laminated glass
- Structural silicone joint
- Aluminium glazing cap
- Steel node connector
- Triangulated steel members
- Concealed gutter & drainage channel
- Waterproof membrane
- Thermal break insulation
- Secondary steel support frame
- Composite steel beam
- Profiled metal decking
- Shear studs
- Reinforced concrete composite slab
- Acoustic insulation
- Suspended ceiling
- Restored masonry wall with steel anchor plate connection

Composite slabs provide lightweight, long-span, and minimally invasive construction, making them ideal for adaptive reuse of heritage structures.

Src: use of AI for enhancing the sketches



For minor cracks, a compatible lime-based repair mortar will be injected into the cracks to restore continuity while maintaining the breathability of the historic masonry. Following the repairs, a breathable water-repellent treatment will be applied to protect the masonry from moisture ingress, freeze-thaw cycles, and harsh climatic conditions prevalent in Ukraine.



**Groove Preparation & Grouting:**

Horizontal grooves are cut across the crack and filled with non-shrink cementitious grout to prepare the wall for reinforcement.

**Steel Stitching:**

Stainless steel (helical) rods are inserted into the grout-filled grooves, bridging the crack and strengthening the masonry.

**Mortar Filling & Plaster Finish:**

The grooves are filled with repair mortar and finished with plaster, restoring the wall's strength and appearance.

The roof is restored using traditional Japanese timber joinery, a time-tested construction technique known for its precision, durability, and structural flexibility. Its interlocking system enhances long-term performance and improves the roof's ability to accommodate structural movement and future stresses while preserving the building's heritage character.

**WORKSHOP**

Complementing the co-working spaces, a flexible workshop fosters interaction between locals and tourists through collaborative activities, cultural exchange, and hands-on experiences, creating lasting memories and handcrafted souvenirs.

**CO WORKING SPACE**

Working spaces are integrated to encourage continuous community use, preventing the building from becoming merely museumified. This adaptive reuse keeps the heritage building active, vibrant, and accessible to both locals and visitors.

**CAFE**

Located at the opposite end of the building, the café provides a comfortable pause point for visitors, offering a space to rest while remaining immersed in the architectural and historical essence of the heritage structure.

**FOYER**

A double-height entrance foyer features a striking glass intervention that symbolizes the impact of the bomb blast, creating a dialogue between the historic fabric and contemporary reconstruction while expressing resilience and renewal.

**LIBRARY**

Strategically integrated with the vertical circulation, the library acts as a transition space connecting the museum and information zone to the first-floor working spaces, promoting seamless movement and continuous learning.

The spaces are strategically organized to create a seamless circulation pattern and intuitive user experience. By integrating everyday community functions within the heritage building, it remains a living public asset rather than a static monument, allowing both locals and tourists to experience, use, and appreciate its cultural and historical significance.

