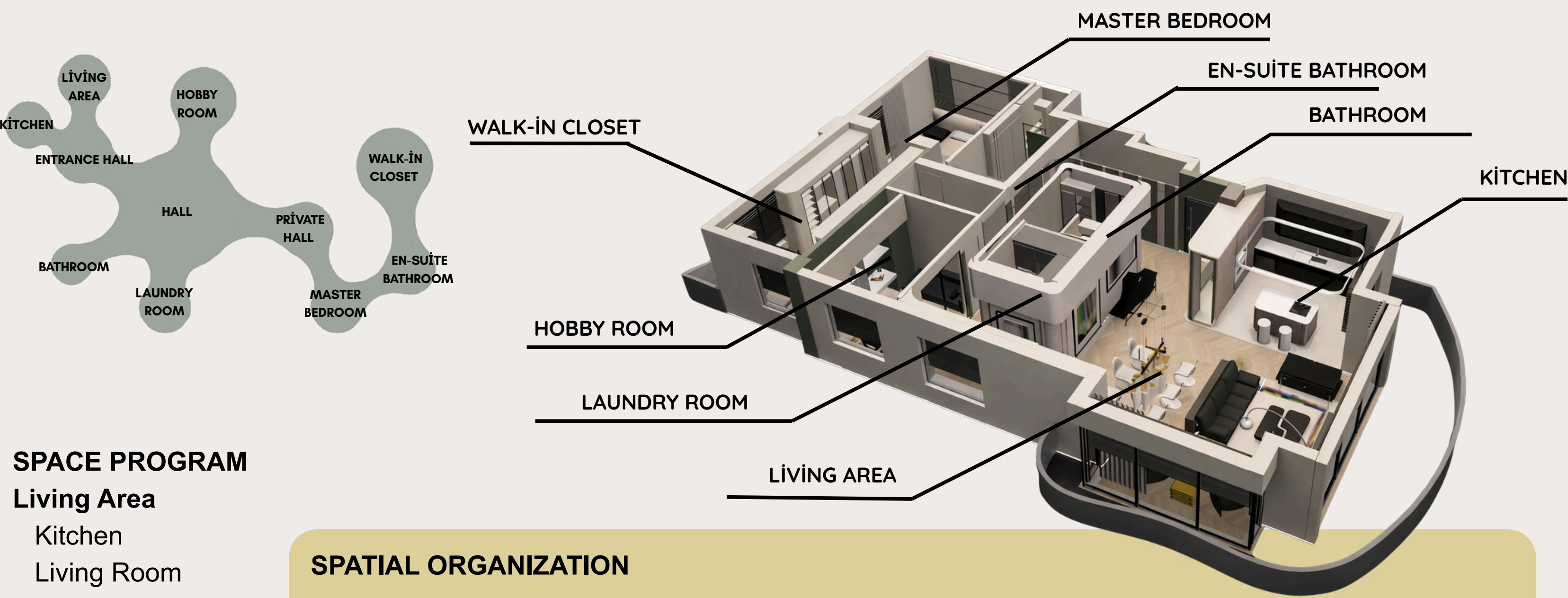


# TECHNICAL DRAWINGS The Contemporary Artist's House

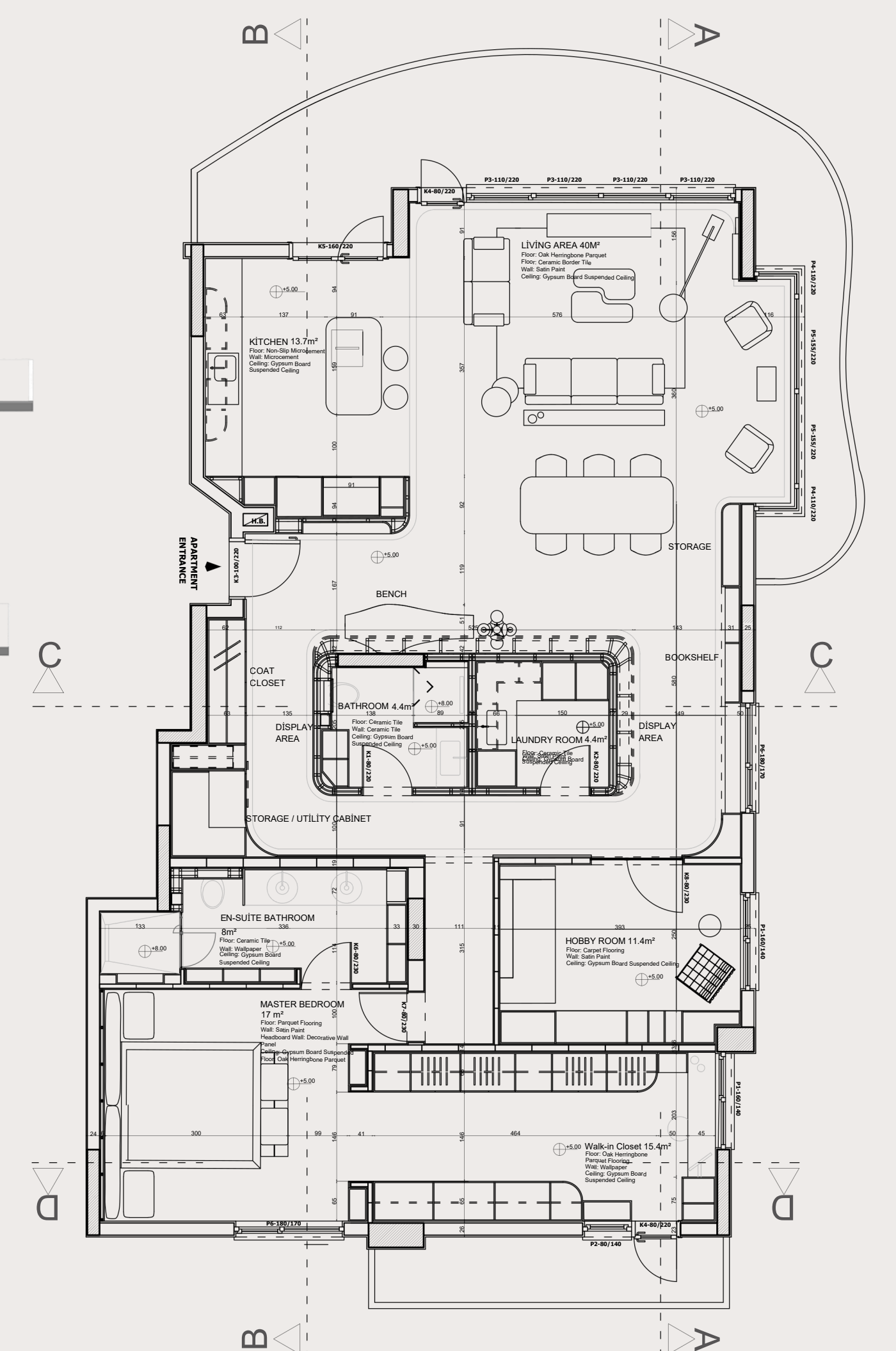
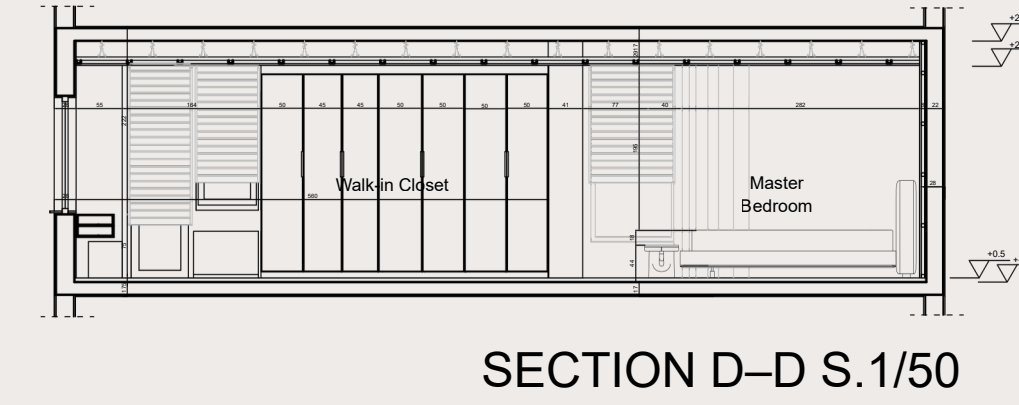
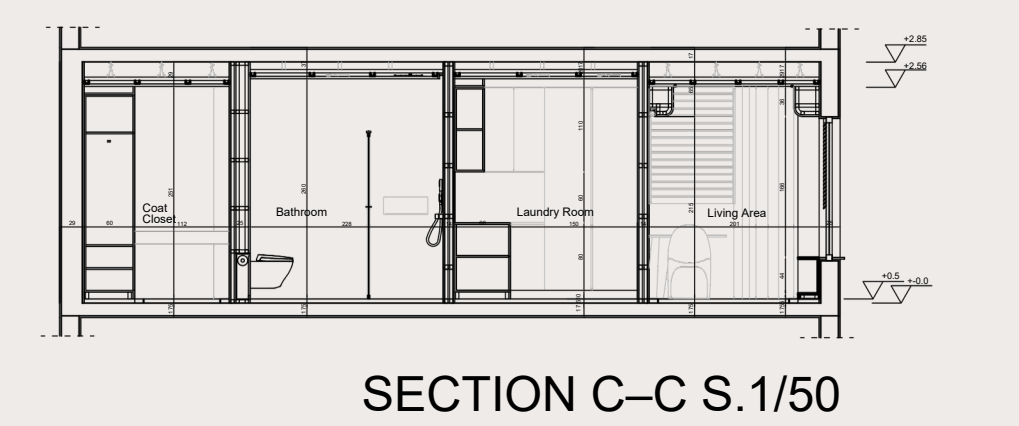
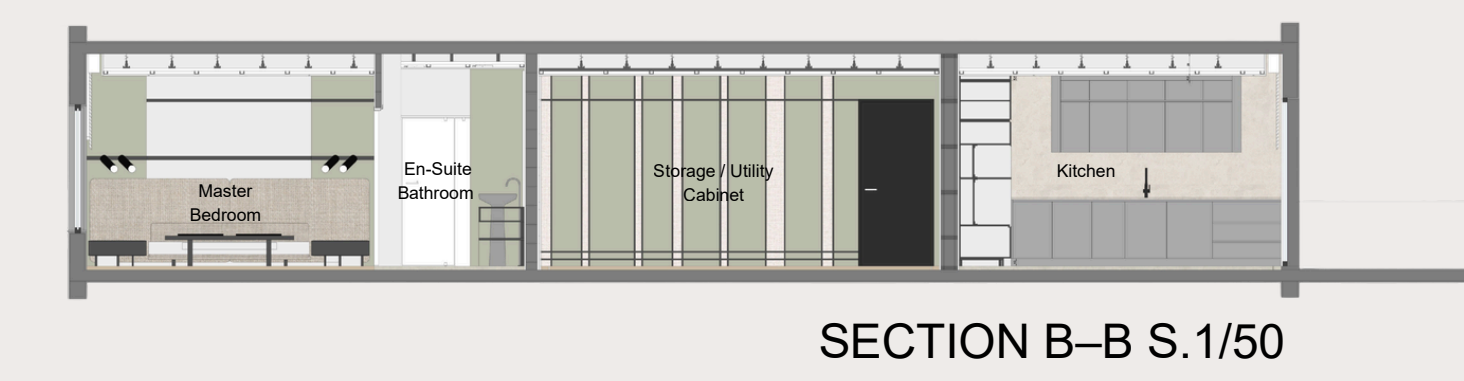
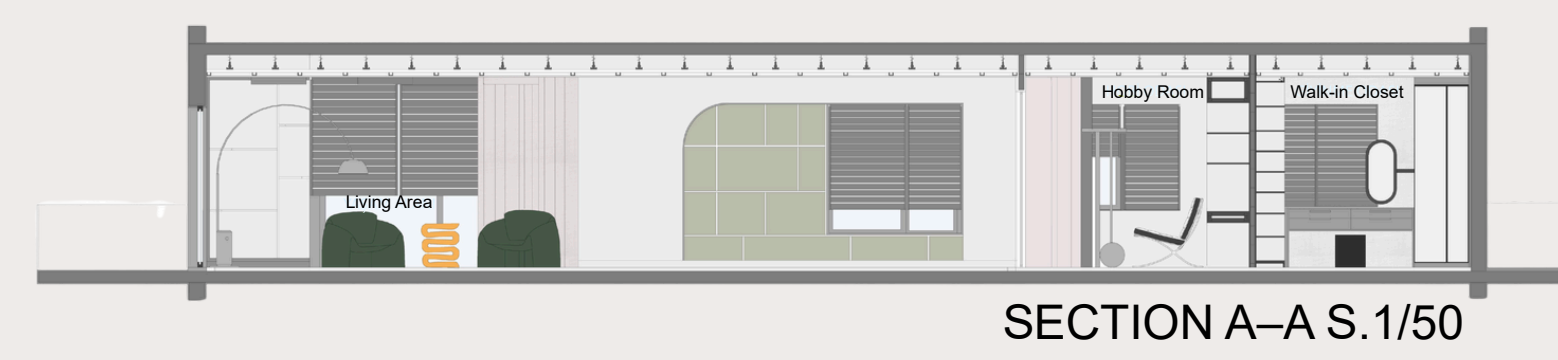


## SPACE PROGRAM

- Living Area
- Kitchen
- Living Room
- Dining Area
- Master Bedroom
- En-Suite Bathroom
- Walk-in Closet
- Hobby Room
- Laundry Room
- Bathroom

## SPATIAL ORGANIZATION

The apartment is organized around a central exhibition core that functions as the primary spatial organizer. Rather than separating rooms with conventional corridors, circulation develops around this core, creating continuous visual connections between the living spaces and the displayed artworks. Social spaces are positioned along the public façade, while private rooms are located in the quieter rear section of the residence. This organization provides a clear functional hierarchy while maintaining uninterrupted spatial continuity throughout the interior.



### ENTRANCE HALL

### KITCHEN

### MASTER BEDROOM

### WALK-IN CLOSET

### BATHROOM

### LAUNDRY ROOM