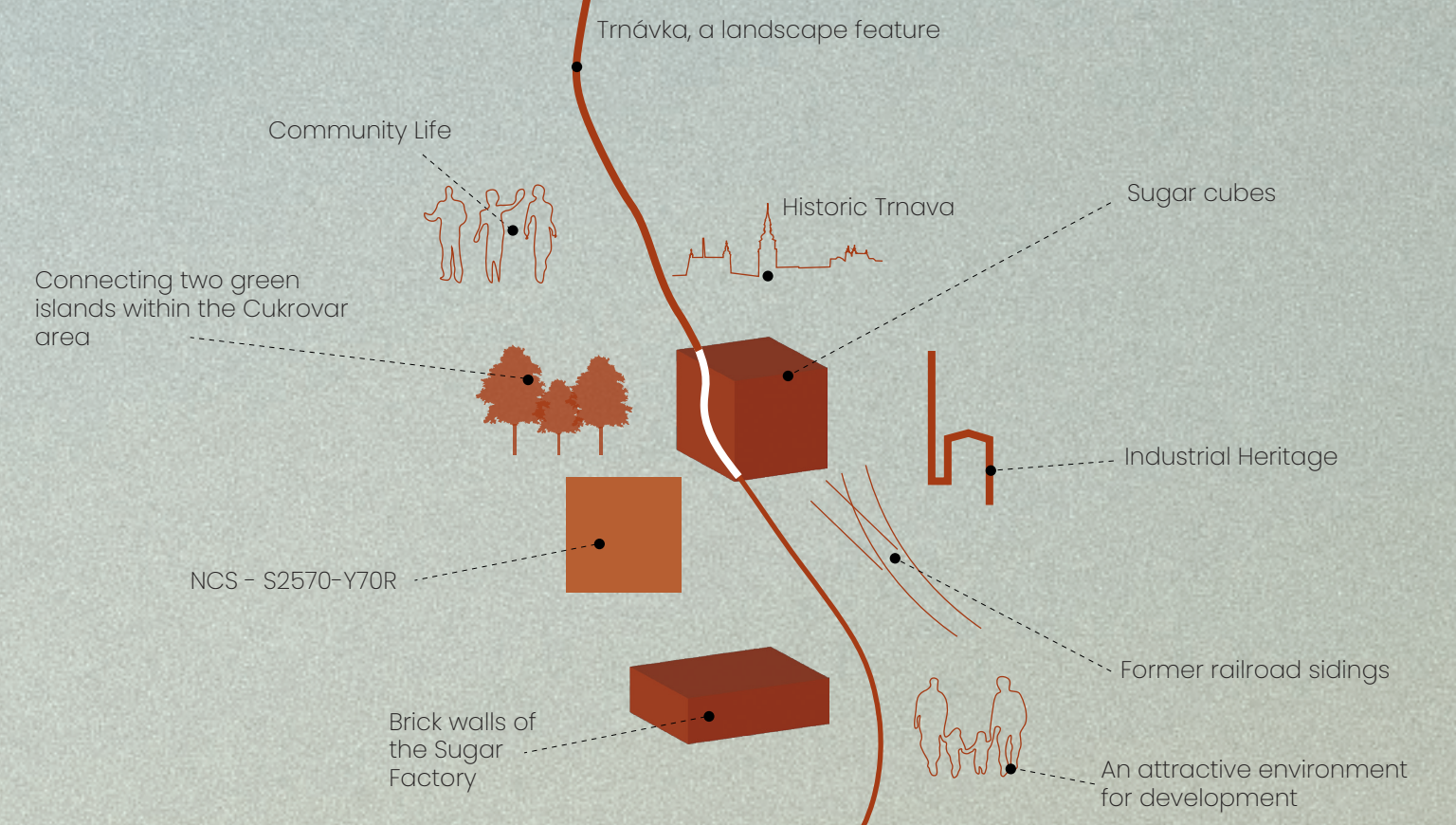




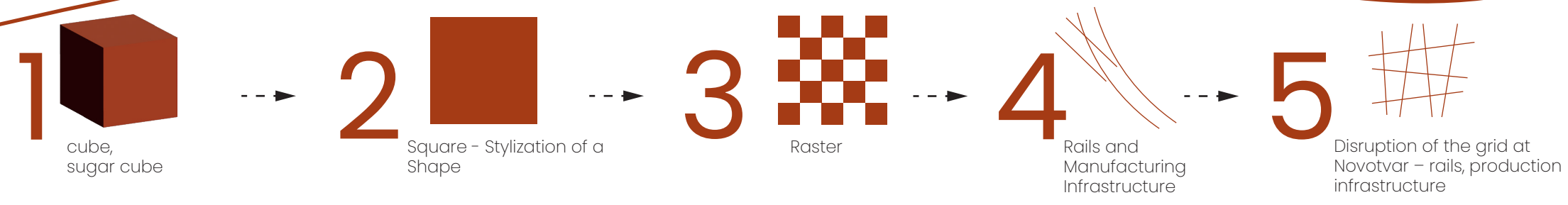
Trnava Sugar Factory

urban planning study

moodboard



concept



The project site is a brownfield site of a former sugar refinery on the outskirts of the Trnava urban reserve, with the goal of transforming the unused area into housing and community amenities. A specific requirement is to design a so-called "super-office" for the city of Trnava on the southern edge of the project site. The current layout of the 14-hectare site is open and unorganized. It is dominated by warehouses and unused spaces. The site also includes a driving school practice area and a parking lot. The dominant feature of the site is the sugar refinery's chimney, which serves as the main landmark. Due to its height, it is visible from all over Trnava. In addition to the sugar refinery, fragments of the original steel bridge, where railroad tracks once ran, have been preserved in the area. Zelený kričiek is also home to a former steam mill, which underscores the area's industrial character. The proposal focuses on connecting pedestrian routes. In front of the sugar refinery is a square that dominates the entire surroundings and serves as a key orientation point. The space incorporates a variety of building typologies with stepped floors that accentuate the sugar refinery and the surrounding development. It is complemented by an abundance of greenery, taking into account climate change and the well-being of residents. The layout of the inner courtyard creates a safe environment for children. Most of the vehicular traffic is routed underground, while roadways are located on the periphery of the site or retained and modified from their original state. This efficiency is further enhanced by the possibility of connecting the site to all cardinal directions should the surrounding areas be rezoned for residential development in the future.



area detail TRAFOSKA TRNAVA

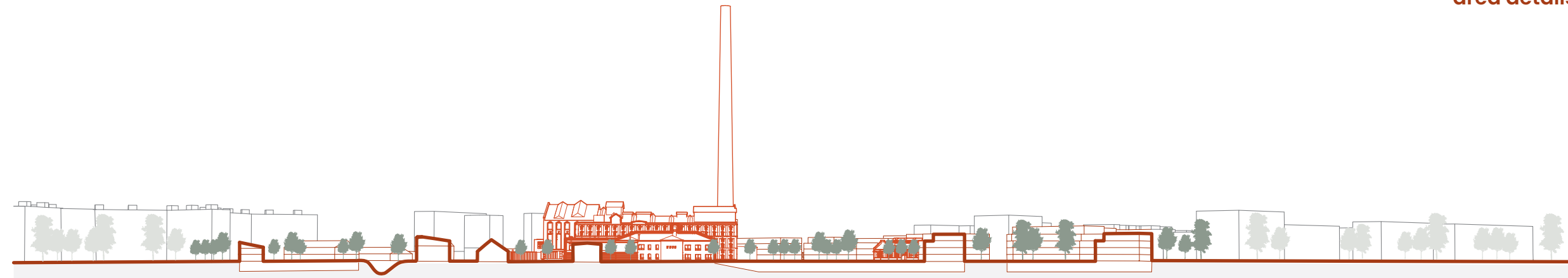
a place that will recharge your energy. Trafoska, the sugar factory's community space, serves to foster cultural and social ties among residents and visitors to the area. It promotes the history of the sugar factory and hosts events and concerts right in front of the historic substation and the main production building on the square. The building also serves as an exhibition, cultural, and educational center. Simply put, it's a place that will energize you.



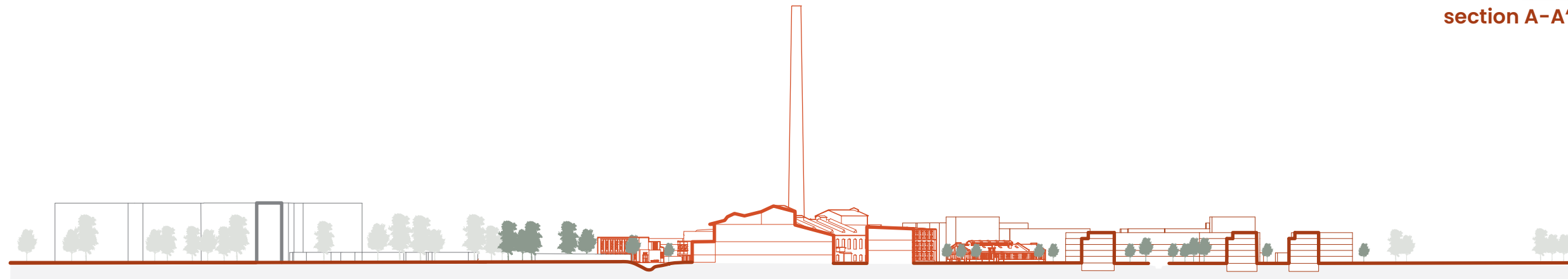
masterplan



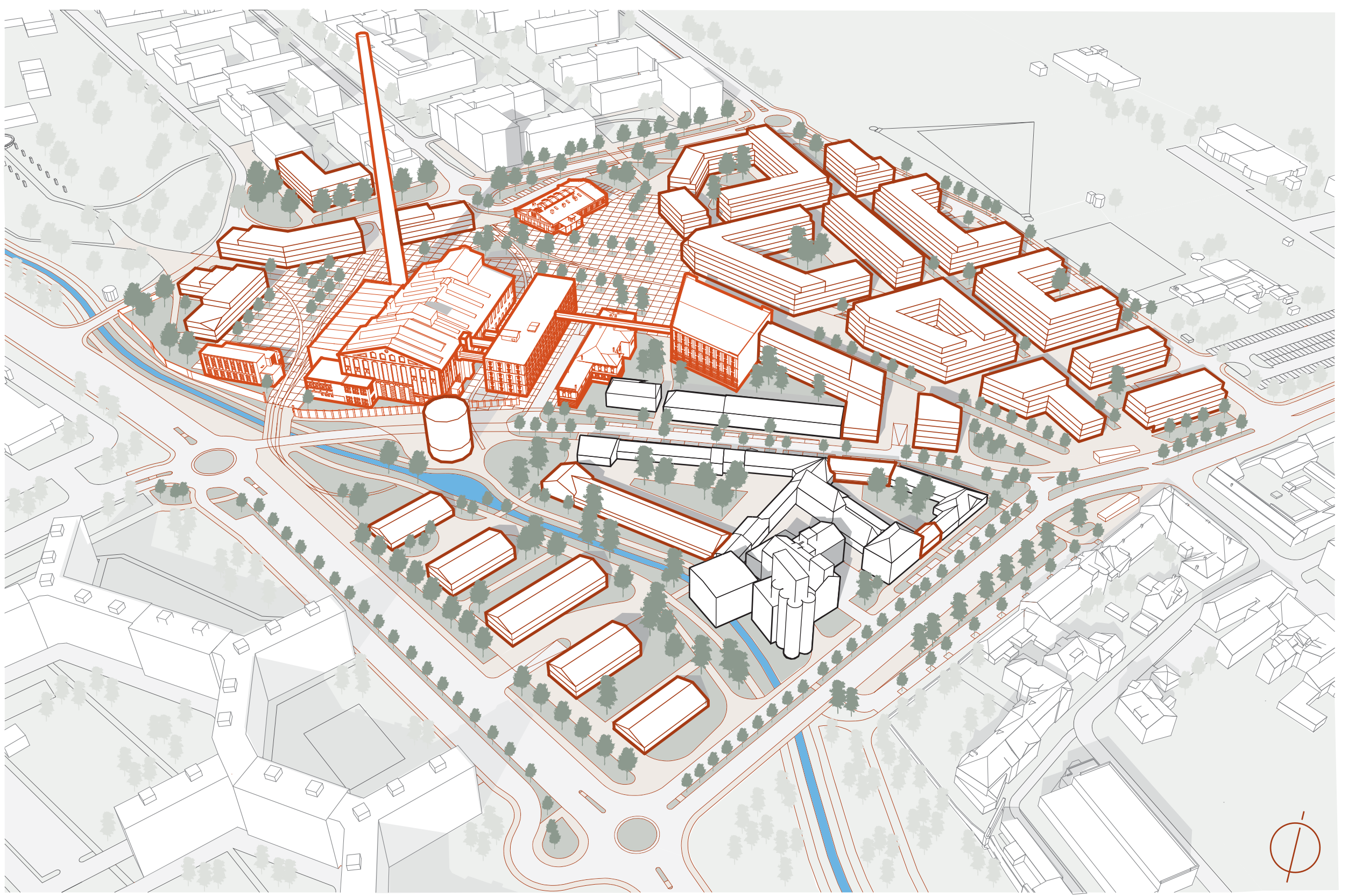
area details



section A-A'



section B-B'



axonometry



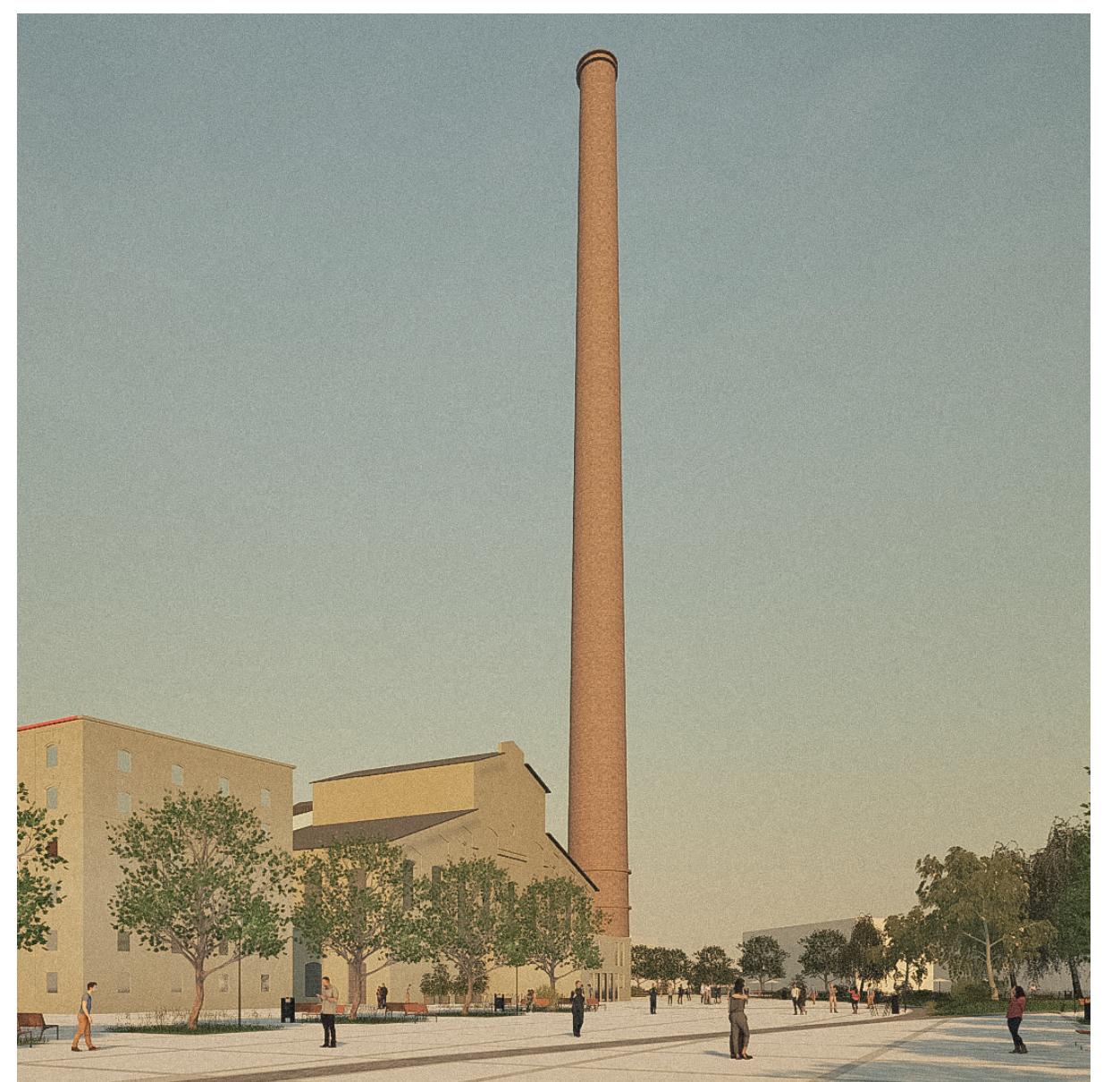
fountain



Srobárová/Zelený Kričok Intersection



the square by the trafoska



square