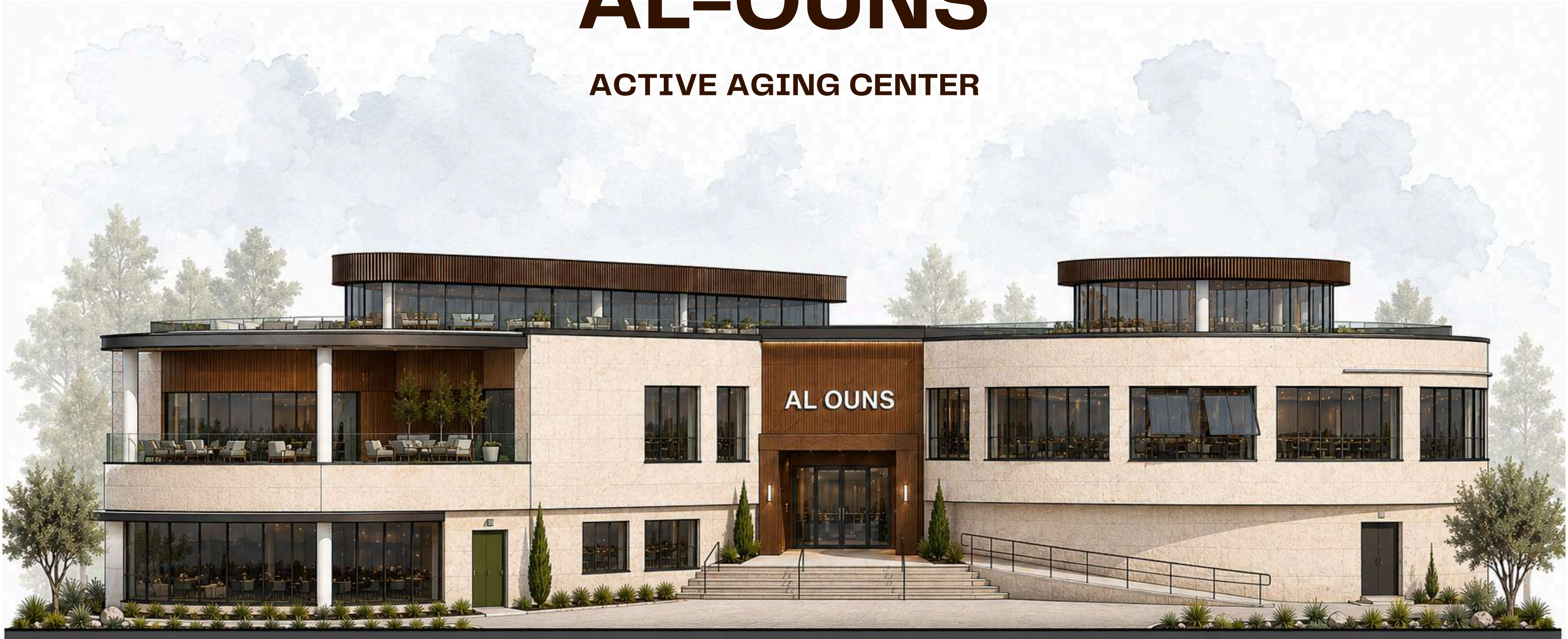




AL-OUNS

ACTIVE AGING CENTER



HANAN SAADEH - 202210596

INTRODUCTION

This project redefines the post-midlife stage (ages 50–80) as a time of continued growth, purpose, and meaningful engagement rather than social withdrawal. As life expectancy continues to increase in Jordan, the need for environments that support the principles of Active Aging by promoting social interaction, physical activity, lifelong learning, and emotional well-being has become increasingly important.

The project addresses the shortage of specialized facilities for older adults in Jordan, where existing spaces often fail to meet their social, recreational, and wellness needs. It proposes an inclusive community hub that fosters creativity, lifelong learning, physical activity, and intergenerational connection. Guided by Universal Design and intuitive Wayfinding principles, the design promotes independence, accessibility, dignity, and a strong sense of belonging while creating a supportive environment that empowers older adults to age actively, confidently, and with purpose.



SURVEY

The survey was conducted to understand the needs, preferences, and daily challenges of retirees in social and recreational environments. It focused on the spaces, activities, and environmental qualities that improve comfort, well-being, and social interaction.



The results showed that retirees prefer having a nearby place with different activities and opportunities for social engagement. Participants emphasized the importance of indoor and outdoor activities, natural lighting, proper ventilation, comfortable gathering areas, and spaces that encourage movement, relaxation, and communication. Based on these findings, these elements were integrated into the project design to create a welcoming community environment.

OUTCOMES AND LESSONS FROM CASE STUDIES



The case studies emphasized the importance of replacing clinical aesthetics with warm, natural materials to create a comfortable and home-like environment for seniors. They also highlighted the role of local architectural elements in strengthening familiarity and community belonging.

The studies showed that U-shaped layouts, shaded outdoor spaces, and clear wayfinding elements such as atriums and visual landmarks help support safety, social interaction, and independence. In addition, natural lighting, ventilation, glazing, and biophilic elements were found to improve mental well-being and reduce isolation. These findings will be applied in the project to create an accessible and socially engaging environment for retirees.



ORIGINAL BUILDING

Maidenhill School is a child-centered educational environment designed to encourage creativity, independence, and social interaction through flexible spaces, natural lighting, and a strong connection to community. Its design focuses on accessibility, comfort, and wellbeing, creating inclusive spaces that support different age groups and activities.

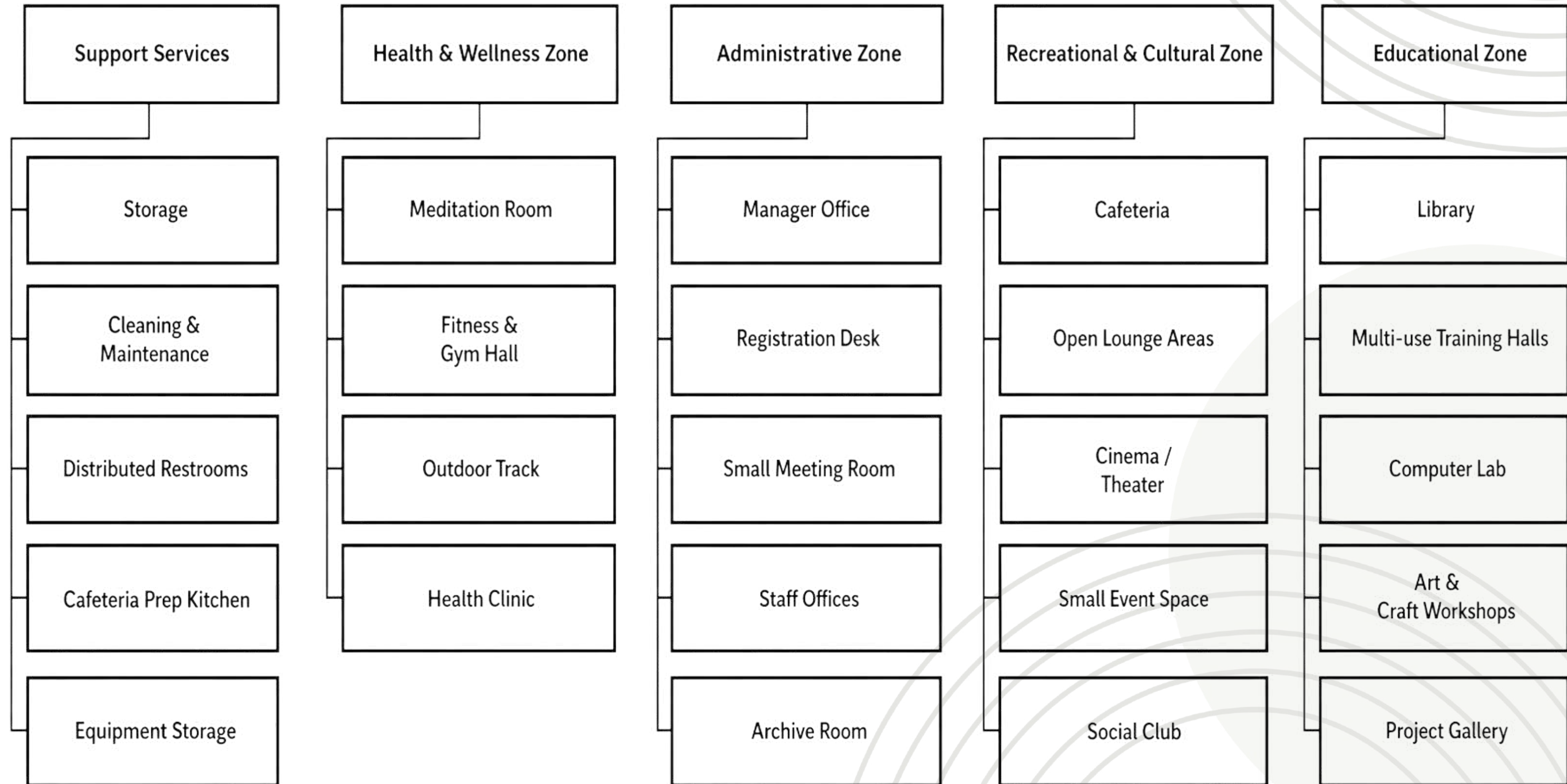
It shares the same vision of designing a welcoming social environment for 50–80 year old users, where interaction, accessibility, movement, and a sense of belonging are the core of the spatial experience.



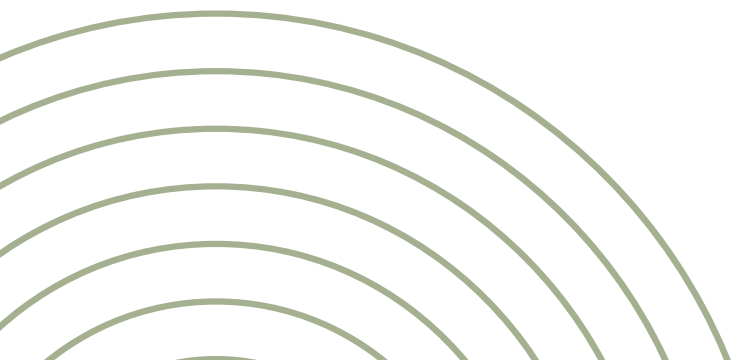
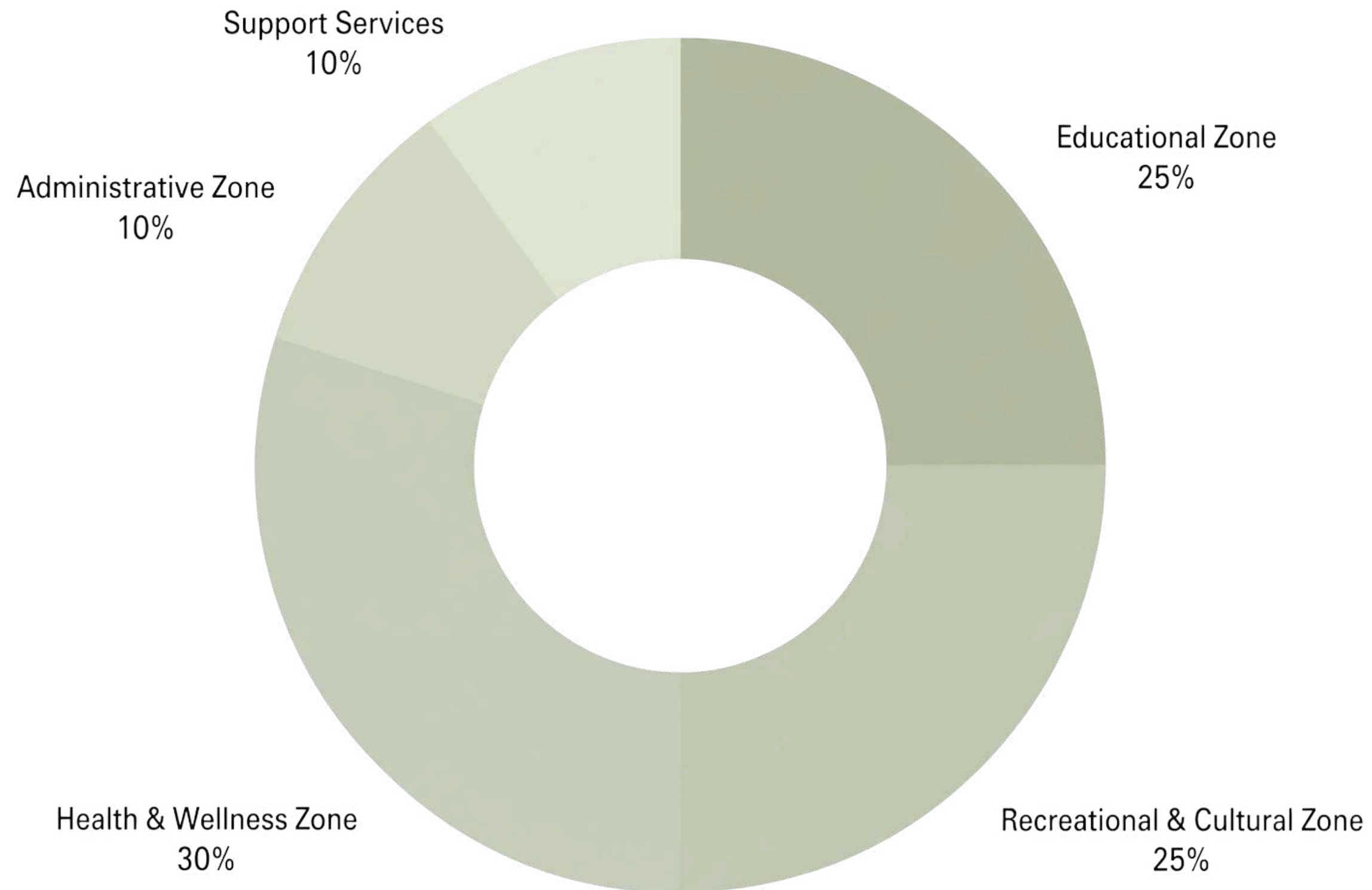
ORIGINAL BUILDING



PROJECT HIERARCHY



PROJECT HIERARCHY



LOCATION

The project site is located within Al Hussein Youth City in Amman (31.979524, 35.905420), with easy access from several main entrances, especially Gates 4 and 6, and close proximity to Gate 7. It is also near the Royal Cultural Center and the National Library of Jordan, enhancing the cultural significance of the location.

The site is surrounded by sports facilities and is close to Gate 8, which attracts children and families, creating a diverse user environment. In addition, its connection to the main road and nearby parking areas improves accessibility and overall site functionality.



SITE ANALYSIS

SUMMER SOLSTICE 81°

SUNRISE 5:31 AM
SUNSET 7:51 PM



LEGEND

- SUN PATH
- PREVAILING WINDS
- VIEWS
- GREENERY
- NOISE SOURCES
- SURROUNDING BUILDINGS

SWOT ANALYSIS

STRENGTHS

- STRATEGIC LOCATION
- UNIQUE AND INNOVATIVE CONCEPT
- BASED ON REAL USER NEEDS (SURVEY-BASED)
- POTENTIAL FOR GROWTH AND EXPANSION
- STRONG SOCIAL AND CULTURAL VALUE

OPPORTUNITIES

- CREATING A UNIQUE SPATIAL EXPERIENCE
- USING SUSTAINABLE MATERIALS
- INTEGRATING LOCAL IDENTITY IN A CONTEMPORARY WAY
- DESIGNING FLEXIBLE MULTI-FUNCTIONAL SPACES
- ENHANCING USER EXPERIENCE THROUGH LIGHTING AND SENSORY ELEMENTS

WEAKNESSES

- LACK OF DIRECT GOVERNMENT SUPPORT
- HIGH IMPLEMENTATION COST
- LOW PUBLIC AWARENESS OF THE CONCEPT
- NEED FOR SPECIALIZED STAFF
- DIFFICULTY BALANCING AESTHETICS AND FUNCTIONALITY IN DESIGN

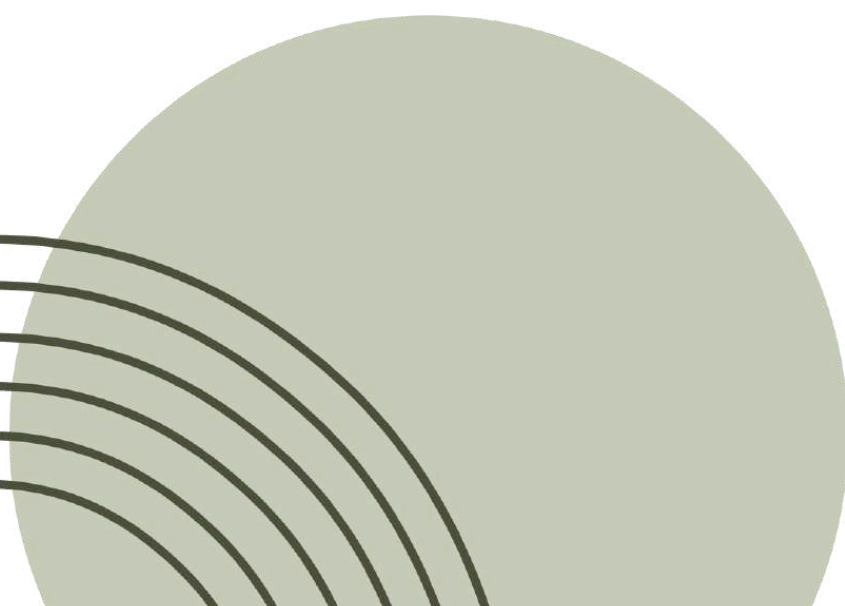
THREATS

- CHANGING USER INTERESTS
- EMERGENCE OF COMPETING PROJECTS
- SITE CONSTRAINTS (SIZE, ORIENTATION, SURROUNDINGS)
- BUDGET LIMITATIONS AFFECTING DESIGN QUALITY
- DIFFICULTY IN EXECUTING DESIGN IDEAS IN REALITY

REGULATORY COMPLIANCE & DESIGN STANDARDS



The design follows Jordanian Building Codes, Greater Amman Municipality regulations, Civil Defense safety requirements, and universal accessibility standards. Special consideration was given to regulations associated with elderly care facilities under the Ministry of Social Development to ensure a safe, accessible, and age-friendly environment.

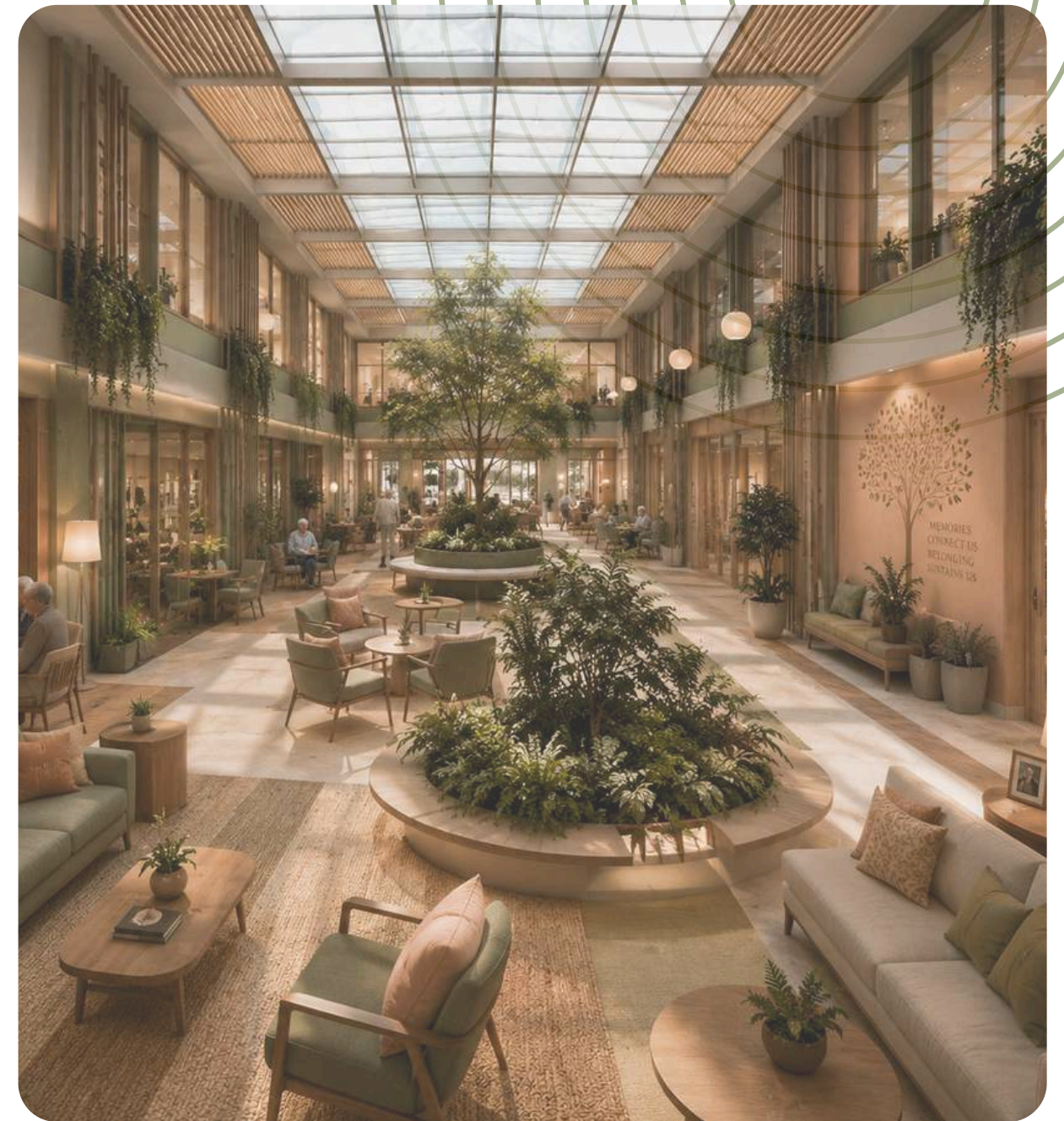


CONCEPT

Courtyard of Memory

The project is rooted in the "Courtyard of Memory" concept, where the entire center functions as a living, interconnected void. Moving beyond the physical definition of a courtyard, it becomes a symbol of harmony and social flow. The goal is to dissolve boundaries so that users feel at the heart of the space, fostering emotional stability and a deep sense of belonging.

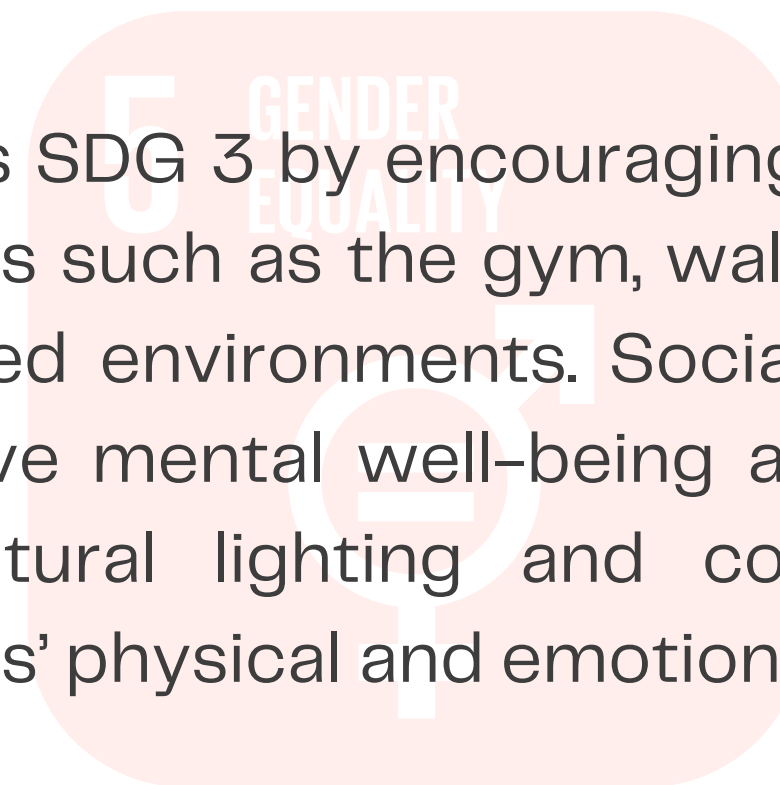
Tailored for the 50–80 age group, the design utilizes "Shared Memory" as a tool for social cohesion. Here, memory is not just nostalgia; it is a sensory environment that recreates the human warmth of the pre-tech era, transforming the facility from a "functional building" into a "community home" that celebrates life experiences.



SDGS ADDRESSED THROUGH THE DESIGN



SDGS ADDRESSED THROUGH THE DESIGN



The project supports SDG 3 by encouraging active and healthy aging through spaces such as the gym, walking track, wellness areas, and landscaped environments. Social spaces were also integrated to improve mental well-being and reduce isolation among retirees. Natural lighting and comfortable interiors further enhance users' physical and emotional health.

SDGS ADDRESSED THROUGH THE DESIGN

3 GOOD HEALTH
AND WELL-BEING



11 SUSTAINABLE CITIES
AND COMMUNITIES



The project addresses SDG 11 by creating an inclusive and accessible environment for retirees. Accessible circulation, gathering spaces, learning areas, and social zones encourage interaction and community engagement. Landscaping and public-style spaces also help create a safe and sustainable community atmosphere.

ACCESSIBLE DESIGN



The project was designed with a strong focus on ADA and accessible design principles to ensure a safe, comfortable, and inclusive environment for retirees of different physical abilities. Wide circulation paths, ramps, elevators, non-slip flooring materials, and clear wayfinding systems were integrated throughout the space to support easy movement and navigation. Furniture selections were carefully considered to provide comfort, proper support, and suitable heights for elderly users, while natural lighting, calming materials, and open layouts help create a welcoming atmosphere that promotes independence, well-being, and social interaction.

INTERIOR PLANTING STRATEGY



The planting strategy prioritizes low-maintenance, low-allergen indoor species that are locally available in Jordan. Selected plants require minimal irrigation, support sustainability goals, and enhance indoor well-being while encouraging a daily connection with nature throughout the center.

INSPIRATION BOARD



MOOD BOARD

OAK WOOD
Deep & Natural
Warmth

MICROCEMENT
Smooth • Minimal
Light Texture

TERRAZZO
Subtle • Timeless
Neutral Base

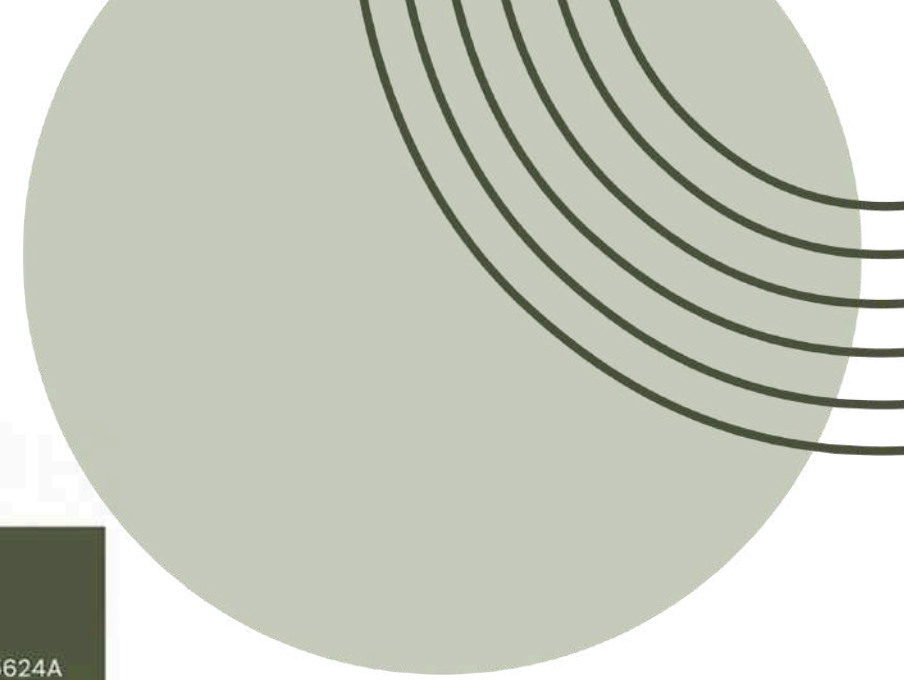
DARK METAL
Powder Coated Finish
Strong • Refined

RATTAN
Handcrafted • Organic
Natural Texture

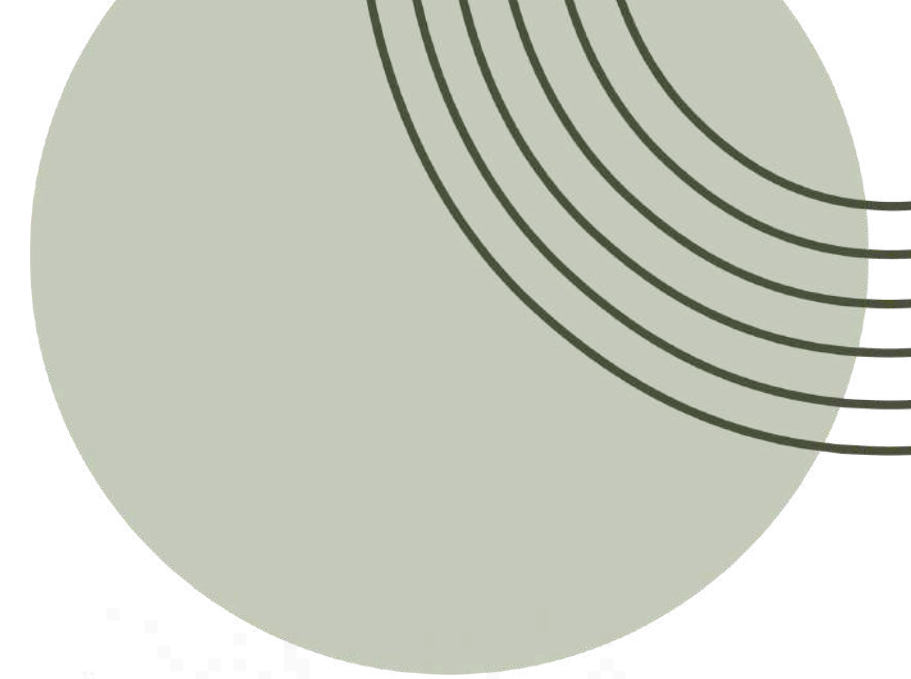
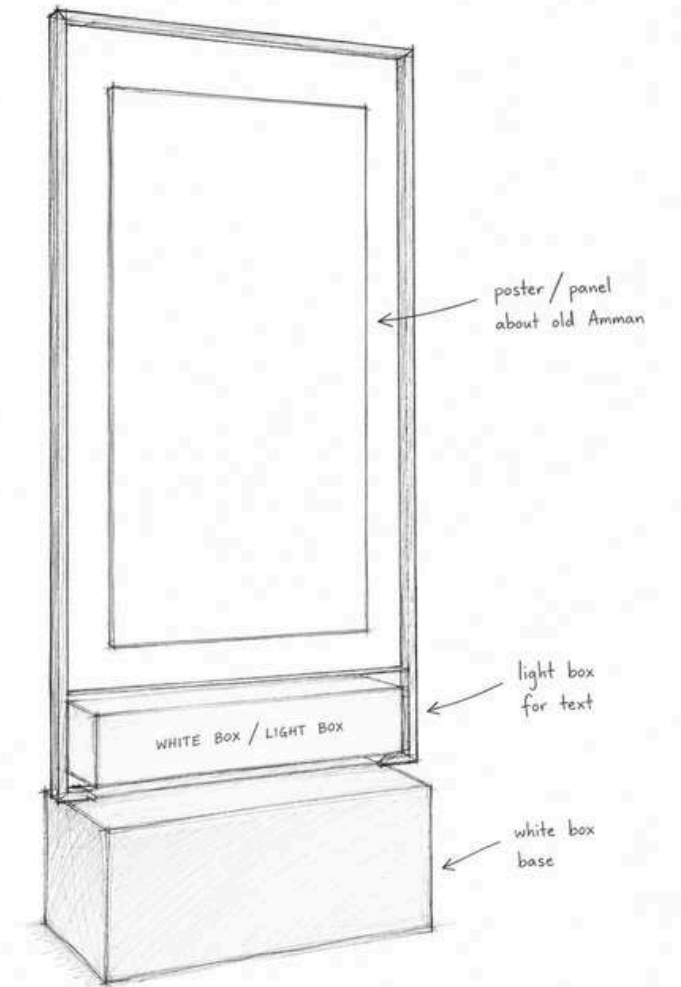
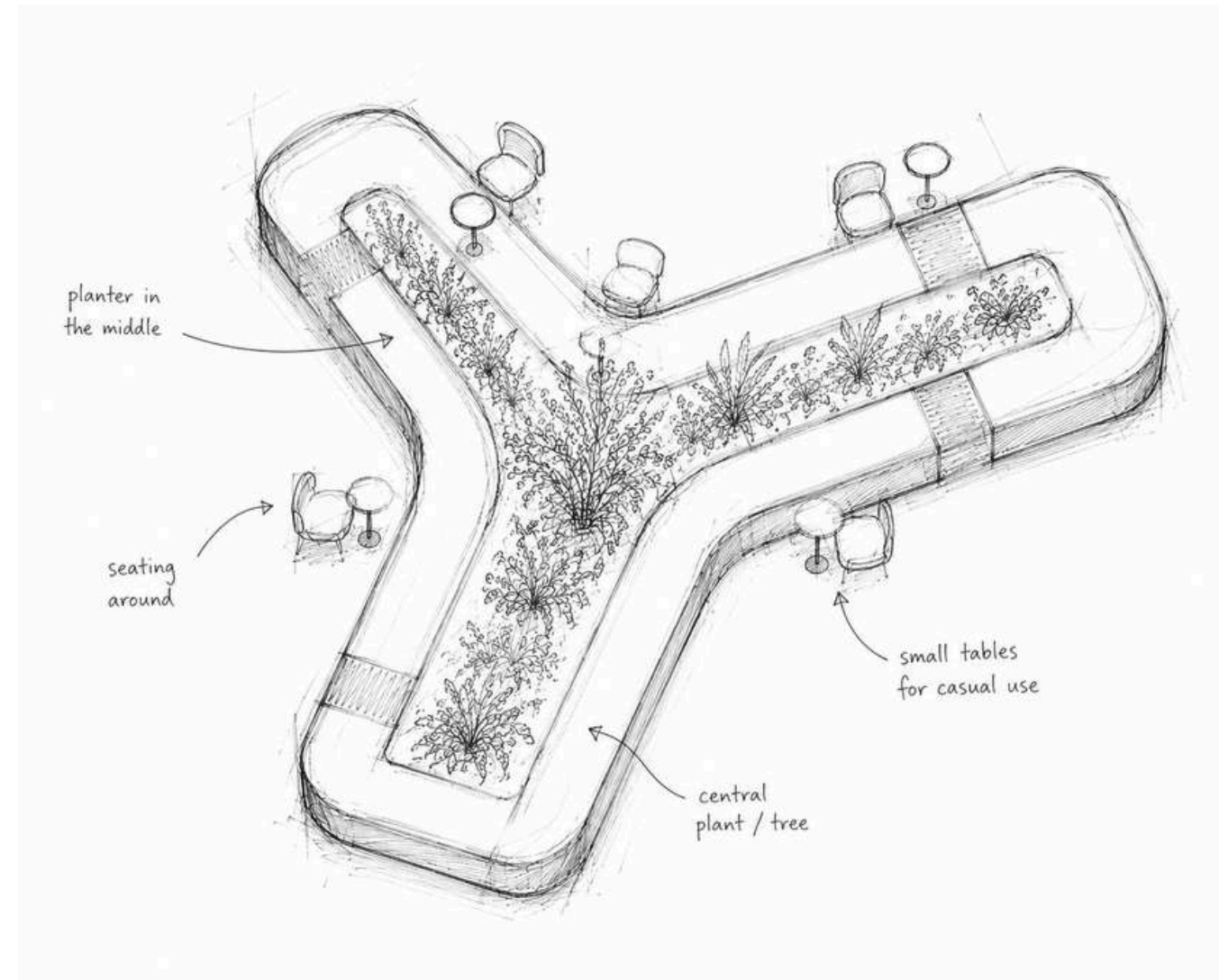
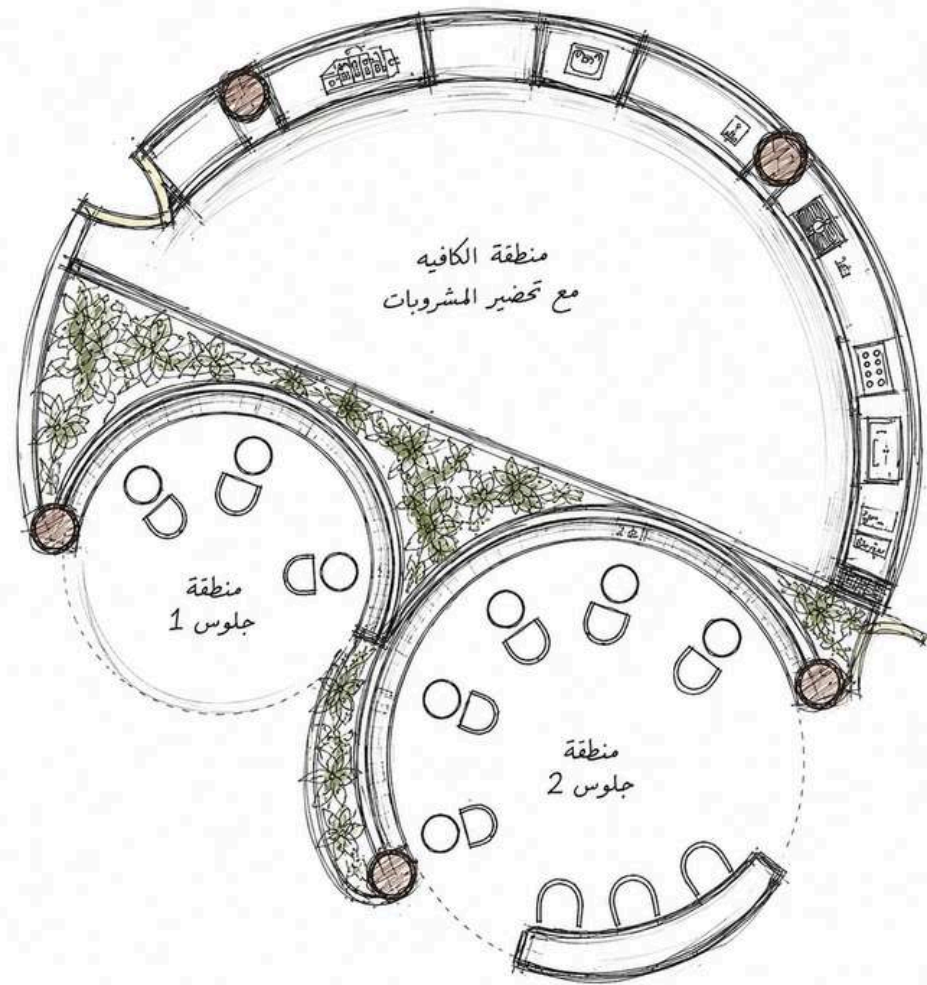
FLUTED GLASS
Textured • Translucent
Softens Light

GREEN LINEN FABRIC
Breathable • Textured
Calming • Natural

RUBBER FLOORING
Resilient • Durable
Speckled Texture



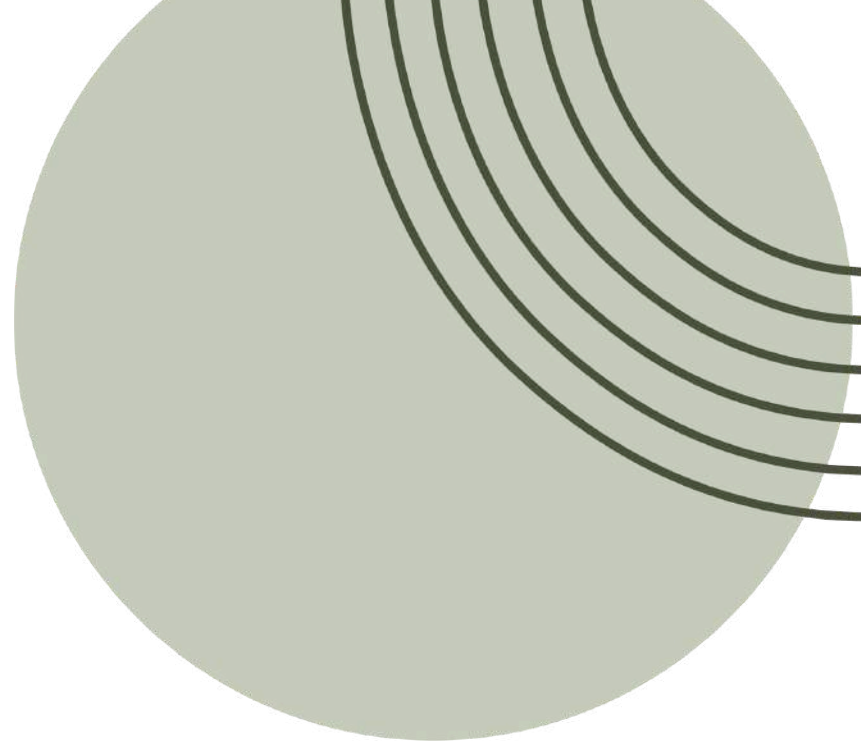
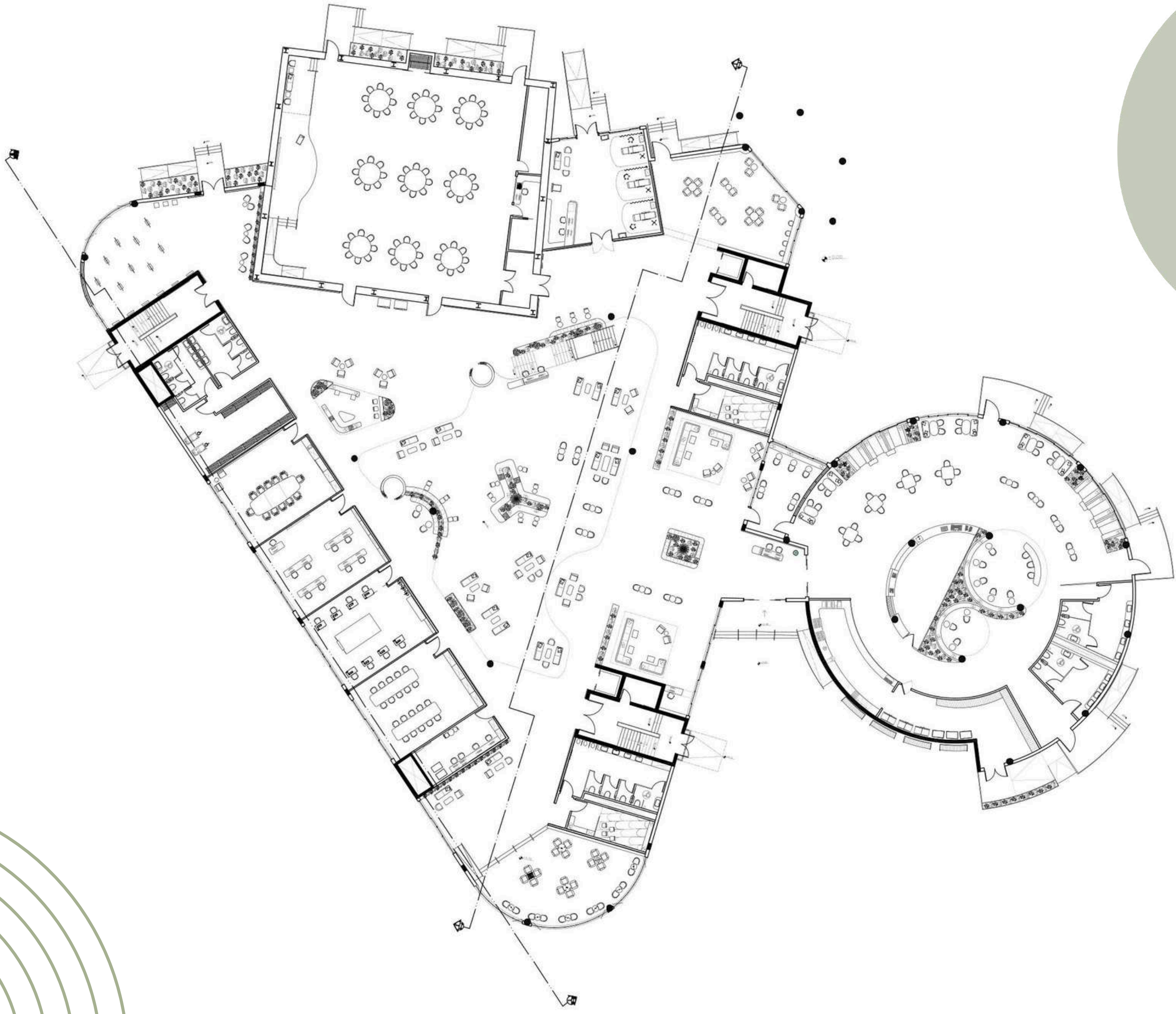
SKETCHES



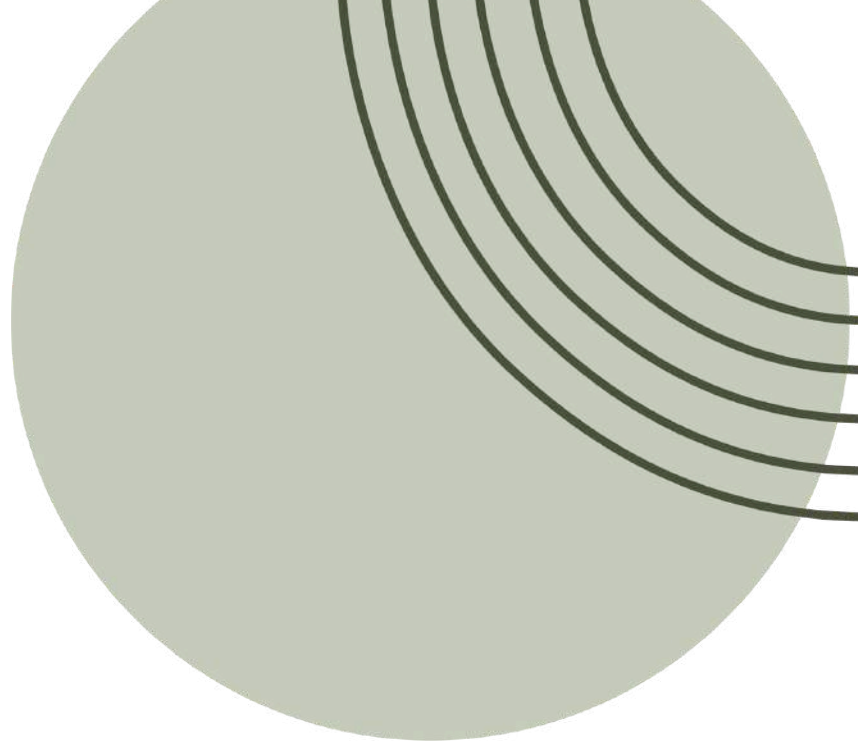
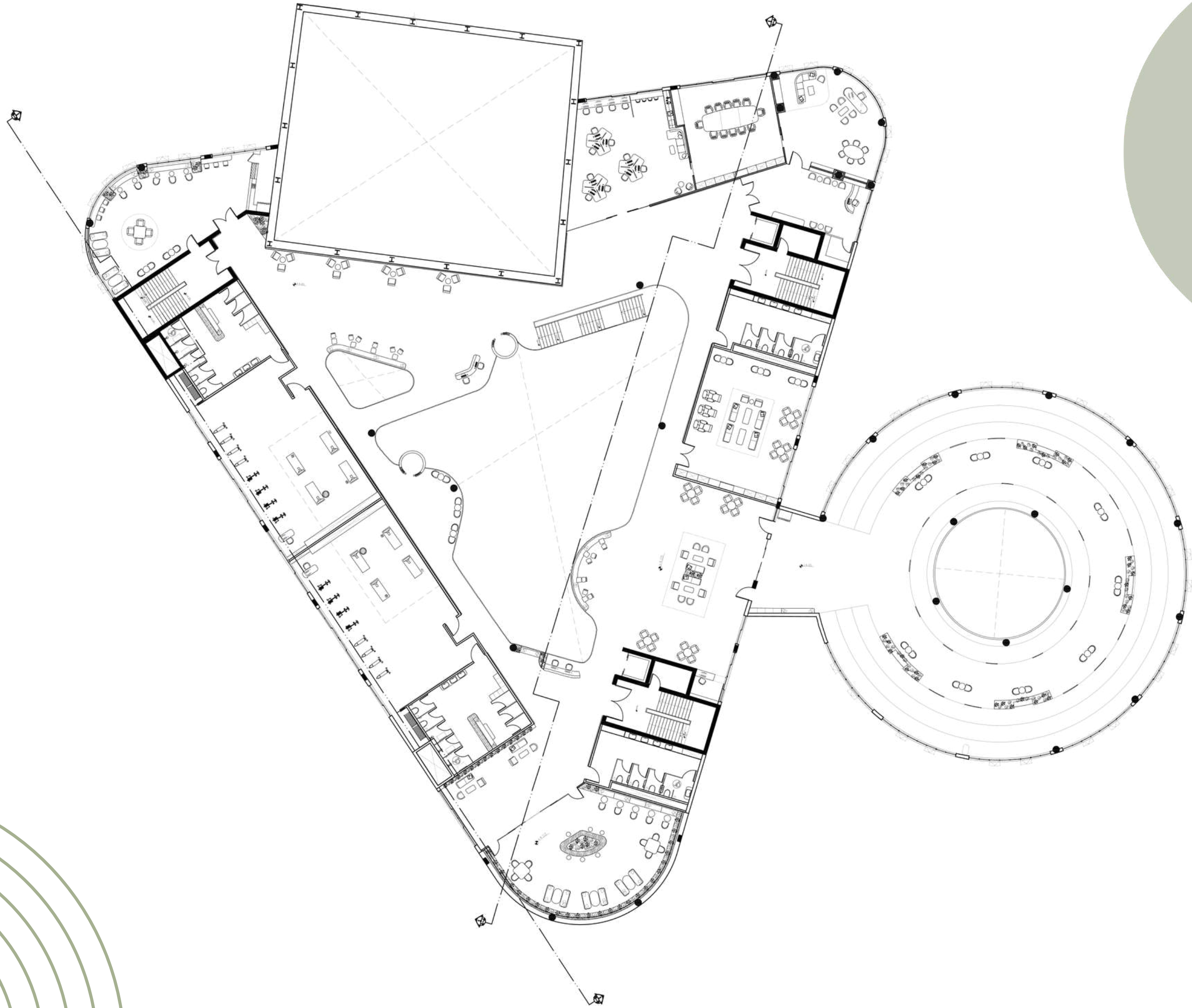
MATER PLAN



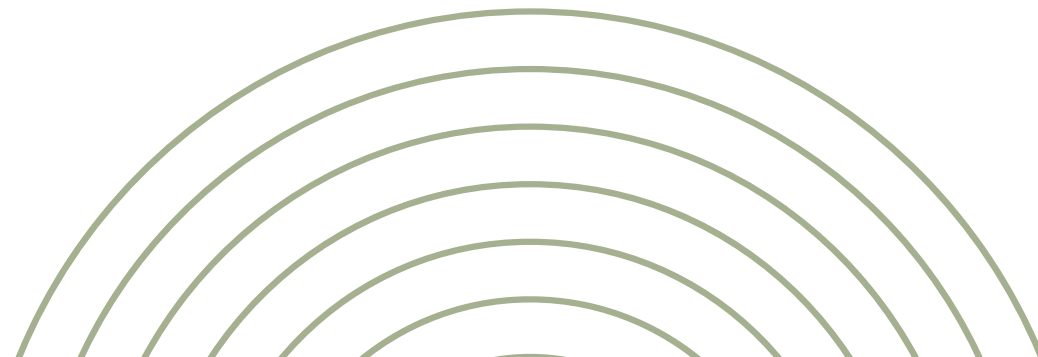
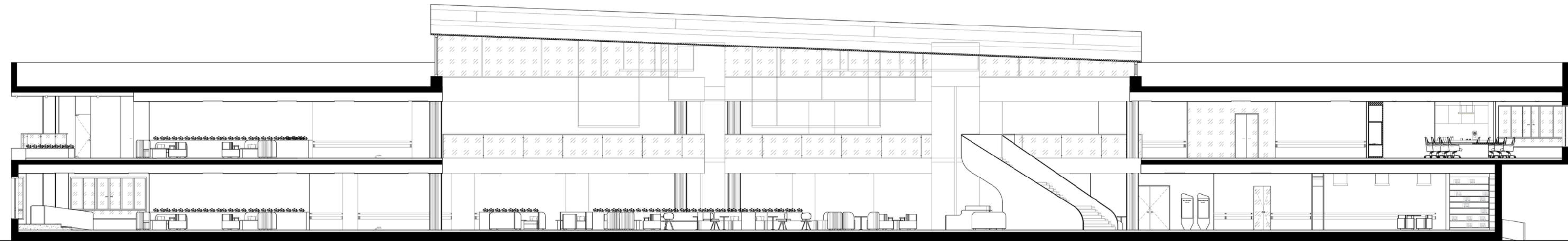
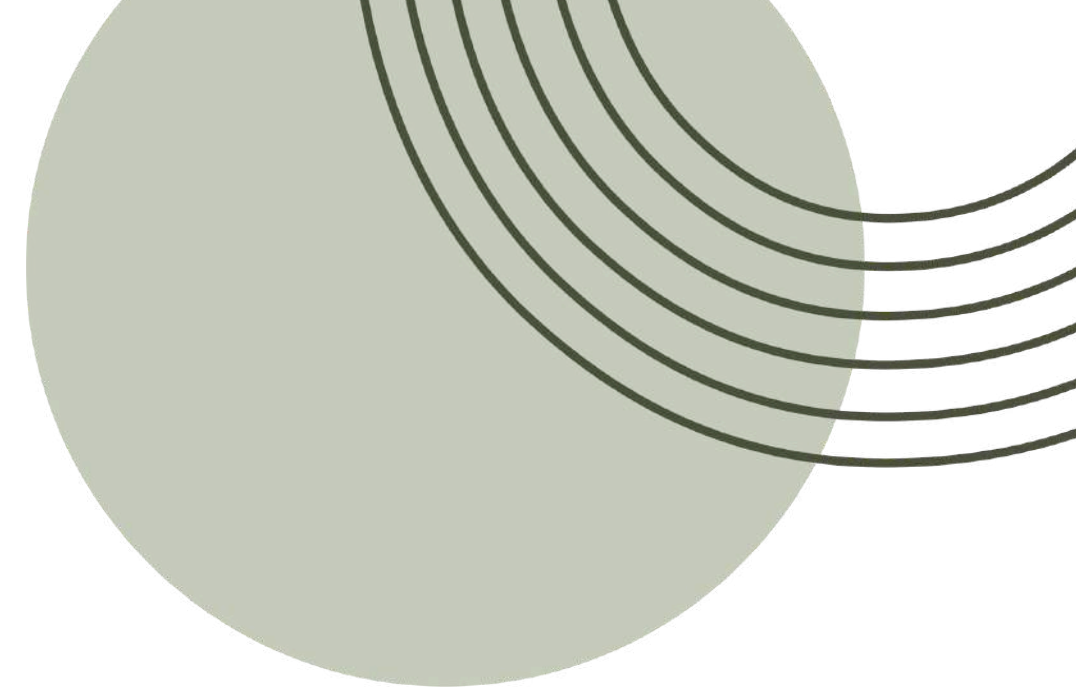
GROUND FLOOR PLAN



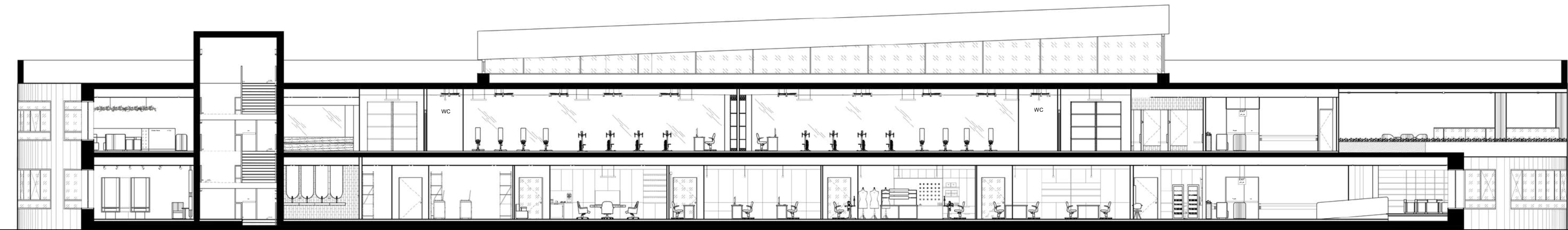
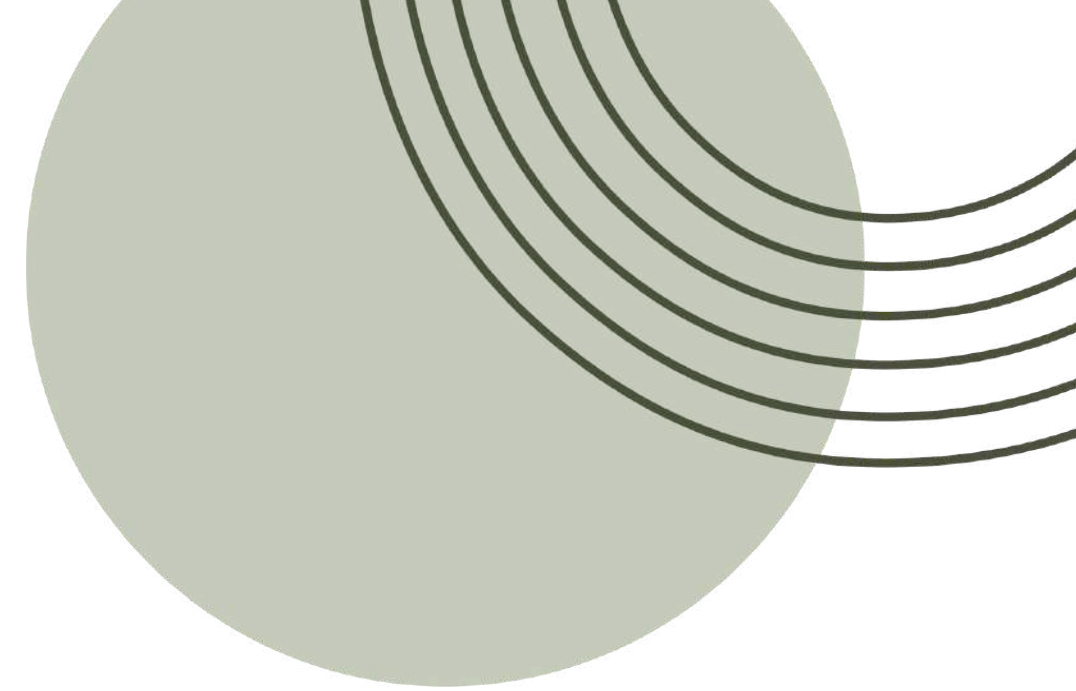
FIRST FLOOR PLAN



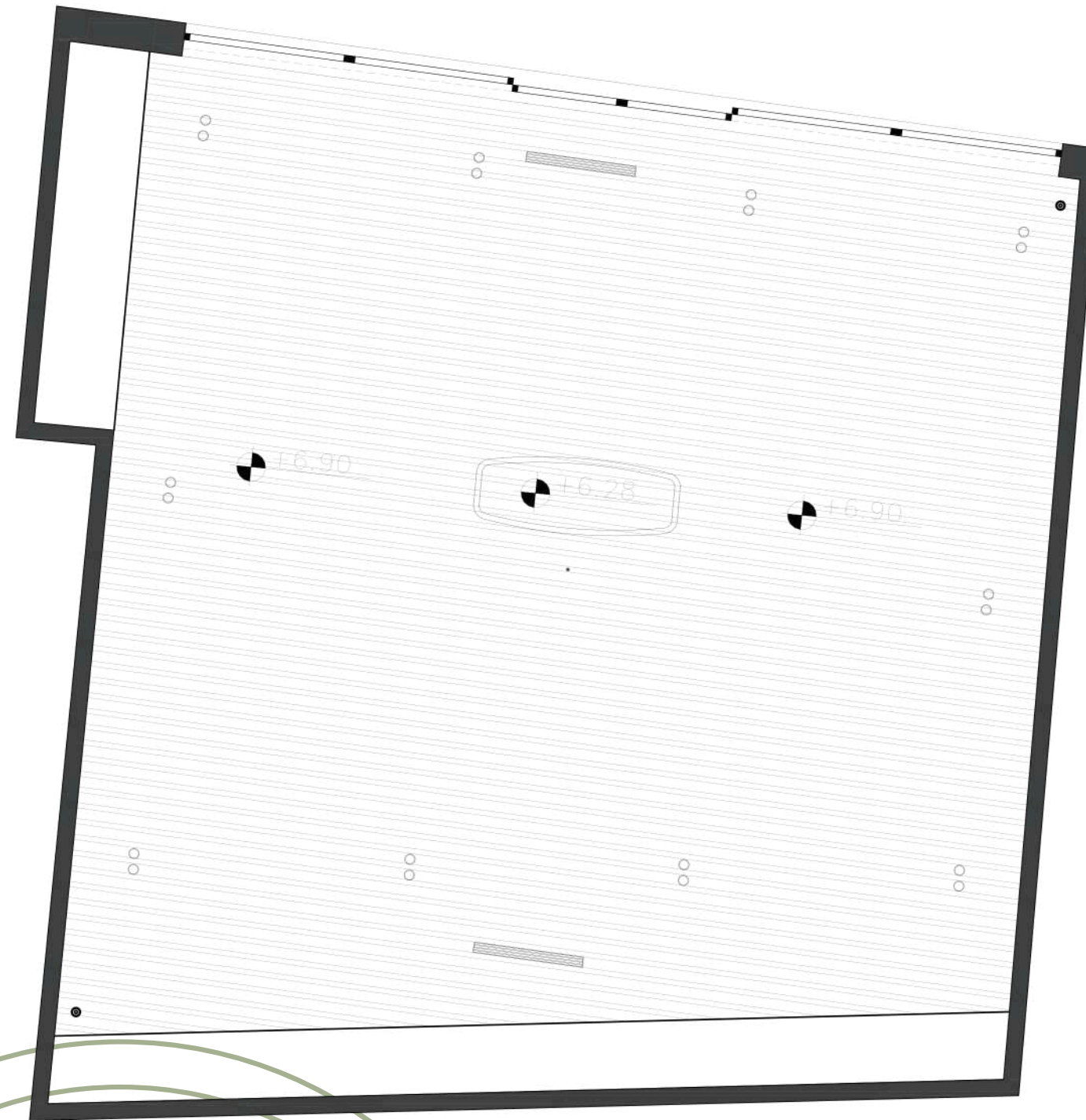
SECTION A-A



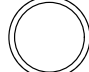

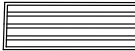


SECTION B-B

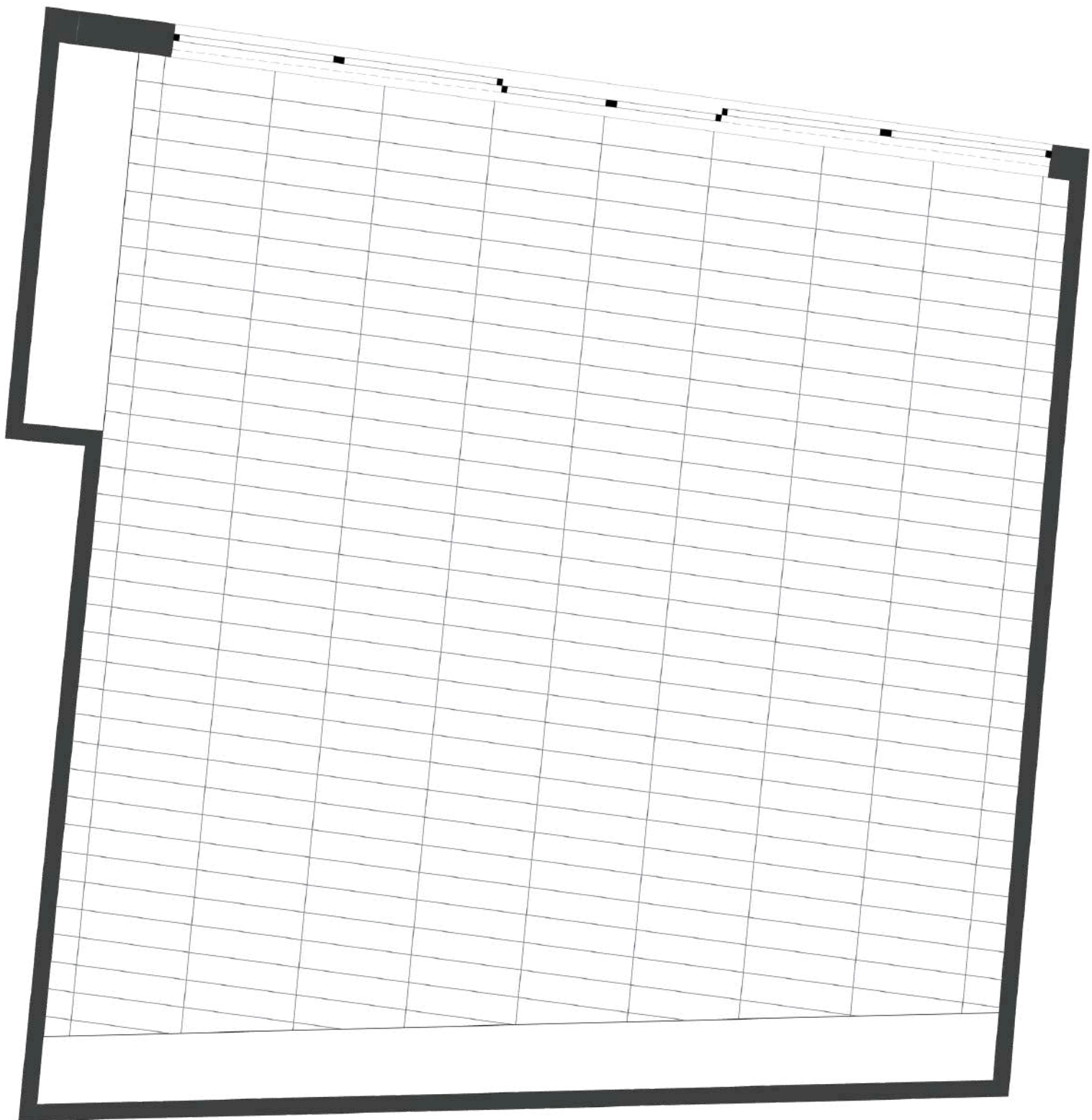


CEILING PLAN-MEETIG ROOM



-  Security Camera
-  Sprinkles
-  Recessed Spotlight
-  Suspended LED Light
-  Linear Slot Diffuser

FLOORING PLAN-MEETIG ROOM



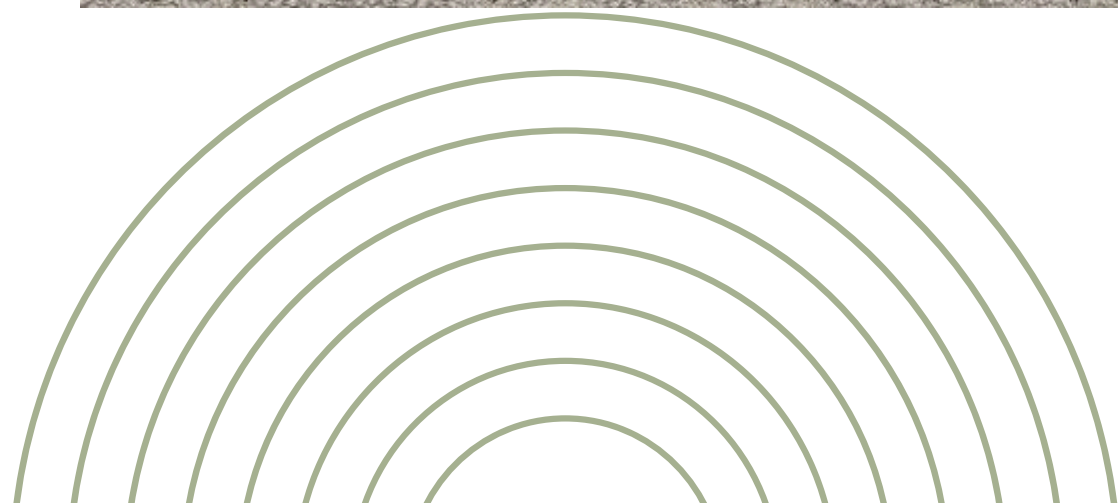
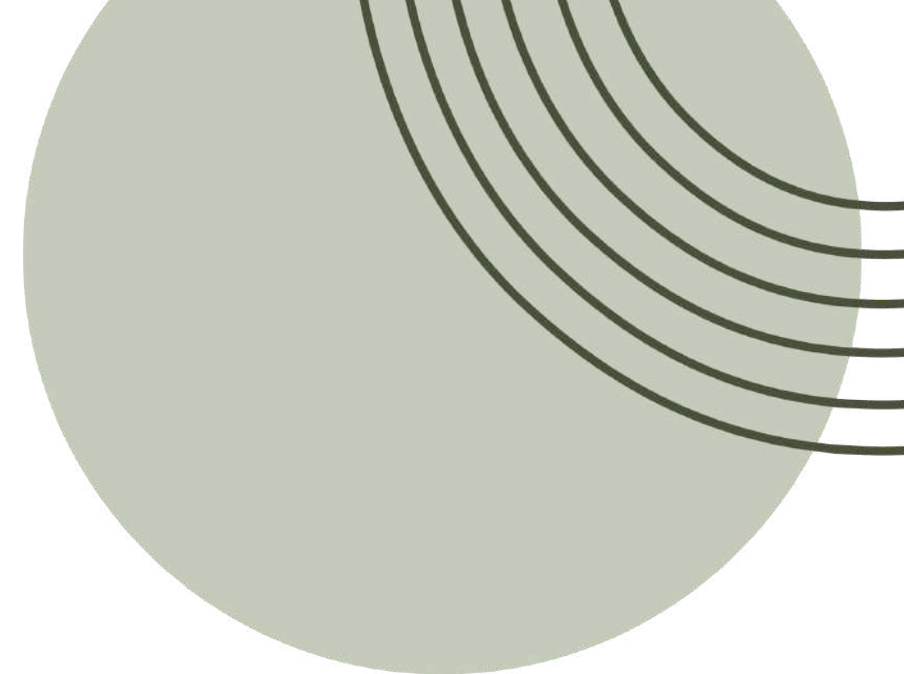
INTERFACE CARPET



(E616 Winter – 600W006)

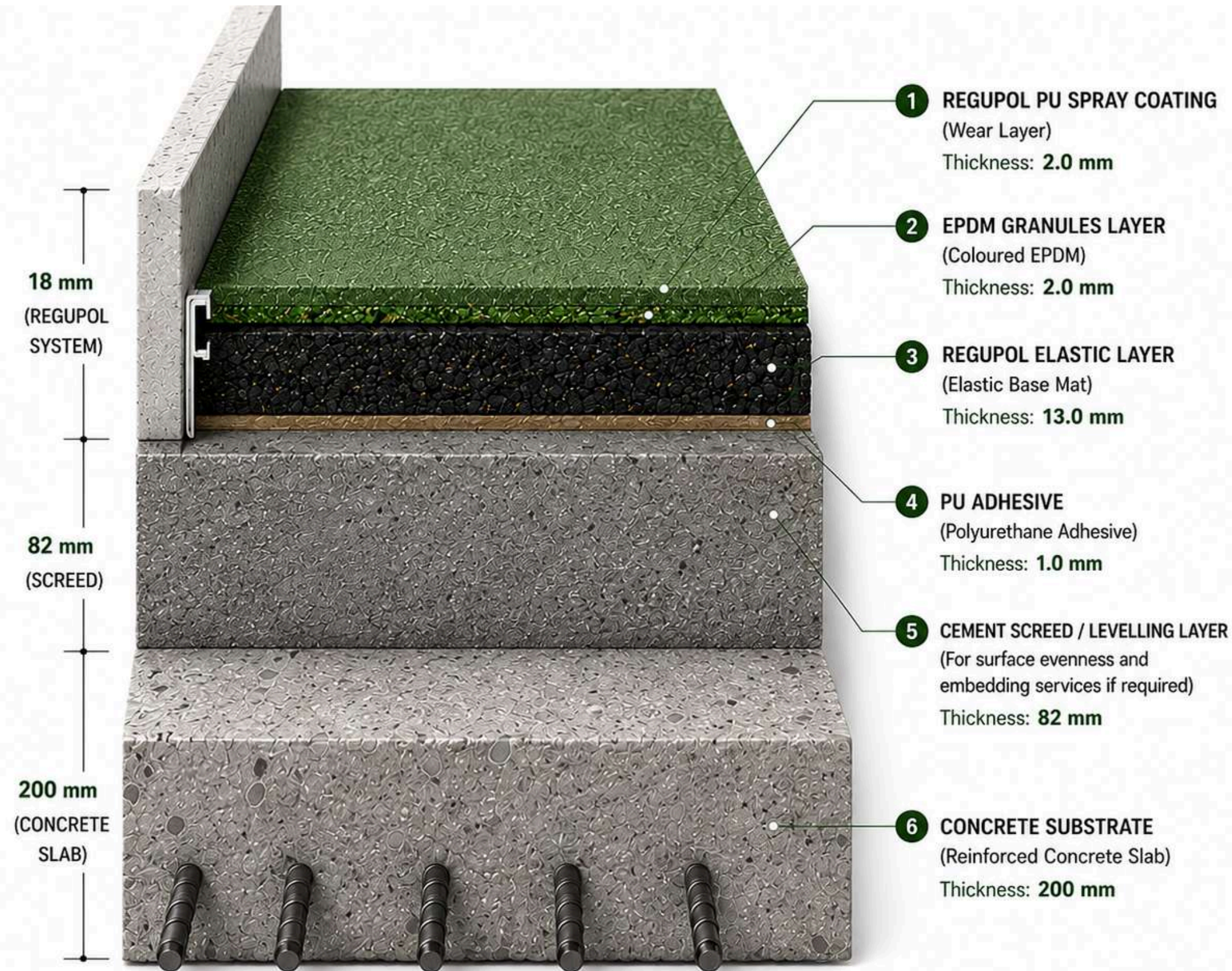
Interface Etched & Threaded Collection (E616 Winter – 600W006) was selected for the meeting room for its durability, acoustic comfort, and clean professional appearance. The carpet tiles help reduce noise levels, creating a more comfortable environment for meetings and collaborative work.

A key reason for its selection is sustainability. Interface is a leader in sustainable flooring, focusing on reducing embodied carbon and incorporating recycled materials into its products. The modular tile system also reduces waste by allowing individual tiles to be replaced when needed, extending the flooring's lifespan and supporting a more sustainable interior design approach.



TECHNICAL DETAILS

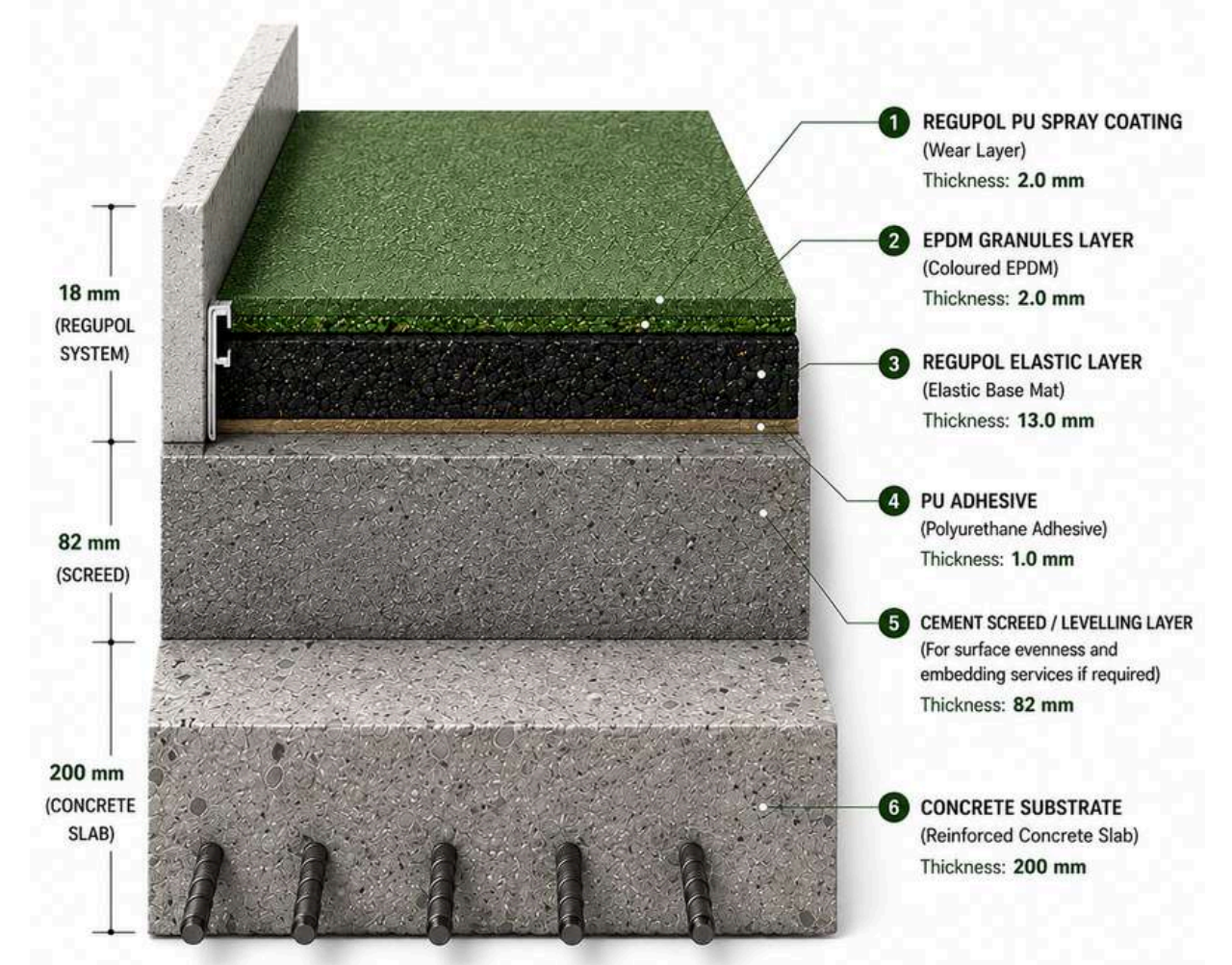
DETAIL 1-REGUPOL TRACK FLOORING ASSEMBLY



REGUPOL INDOOR WALKING TRACK

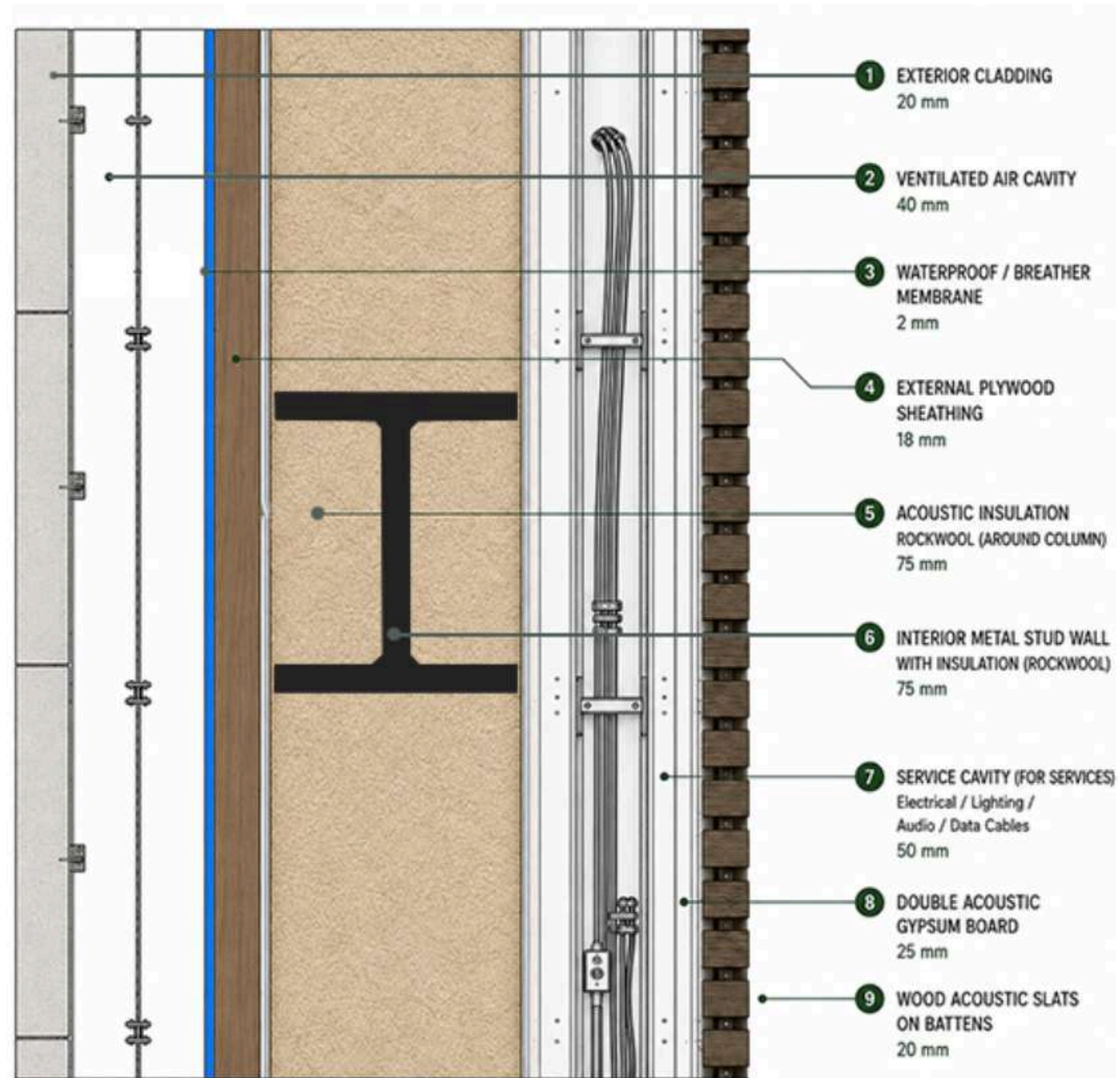
The running track uses a REGUPOL athletic flooring system, chosen for its comfort, safety, durability, and sustainability. The system consists of a 2 mm PU wear layer, a 2 mm EPDM granules layer for color and weather resistance, and a 13 mm recycled rubber elastic base mat that provides shock absorption and reduces stress on joints. These layers are bonded with a PU adhesive and installed over a cement screed and reinforced concrete slab.

The use of recycled rubber content supports sustainability goals, while the resilient surface creates a safer and more comfortable experience for users. REGUPOL is widely recognized as a high-quality and environmentally responsible solution for sports and recreational facilities.



TECHNICAL DETAILS

DETAIL 2 - MULTIPURPOSE HALL EXTERNAL WALL ASSEMBLY



TECHNICAL DETAILS

DETAIL 3 - INTERIOR PARTITION WALL ASSEMBLY



VOID - SOCIAL AREA



RESTAURANT



EXHIBITION



MEETING ROOM



TERRACE



INDOOR TRACK



WOMEN'S GYM



FINAL POSTER

AL-OUNS الأونس
Designed for warmth, built for connection

Graduation Project
Hanan Yousef Saadeh 202210596
Supervised By Prof. Dr. Osama Ali

This project reimagines active aging as a stage of connection, creativity, and active living. It addresses the need for inclusive spaces in Jordan that support well-being, independence, and community belonging. Through health, learning, and social engagement, it promotes active aging and enhances quality of life.

Concept
Courtyard of memory
The project transforms the courtyard into the emotional and social anchor of the center. Inspired by the warmth of pre-digital communities, the "Courtyard of memory" fosters connection, belonging, and active interaction for adults aged 50-80, reclaiming the courtyard as a space for shared stories and new memories.

Site Analysis
Jordan - Amman - Madinat Al Hussein

Universal Accessibility and ADA Integration
Universal accessibility is integrated through wide circulation, ramps, non-slip surfaces, accessible facilities, and clear wayfinding to enhance safety and independent movement. The design follows ADA standards to ensure accessibility and barrier-free navigation.

Interior Planting Strategy
The planting strategy prioritizes low-maintenance, low-allergen indoor species that are locally available in Jordan. Selected plants require minimal irrigation, support sustainability goals, and enhance indoor well-being while encouraging a daily connection with nature throughout the center.

Color Scheme and Material Board

Sketches

Bubble Diagram

Spatial Zoning

SWOT Analysis

Strengths

- Innovative concept
- User-centered design
- Flexible expansion potential

Weaknesses

- Low public awareness
- Need for specialized staff
- High implementation cost

Opportunities

- Spatial innovation
- Using sustainable materials
- Reinterpreting local identity

Threats

- Budget limitations
- Future competitors
- Changing user interests

Regulatory Compliance & Design Standards
The design follows Jordanian Building Codes, Greater Amman Municipality regulations, Civil Defense safety requirements, and universal accessibility standards. Special consideration was given to regulations associated with elderly care facilities under the Ministry of Social Development to ensure a safe, accessible, and age-friendly environment.

SDG s Addressed Through The Design
The project is primarily driven by SDG 3, promoting the physical and psychological well-being of older adults through accessible circulation, natural lighting, ventilation, and sensory-driven spaces. It also supports SDG 5 through inclusive and universally accessible design, SDG 7 through passive sustainable strategies and energy-conscious planning, and SDG 11 by encouraging walkability, accessible public spaces, and community engagement.

Master Plan Scale 1:300

Main Entrance Perspective (Not To Scale)

Section A-A Rendered Scale 1:100

Section A-A Scale 1:50

Section B-B Scale 1:50

Ground Floor Plan Scale 1:75

First Floor Plan Scale 1:75

Ceiling And Flooring Plan Scale 1:20

Technical Details

Detail 1 - Rappet Track Flooring Assembly

Detail 2 - Multipurpose Hall External Wall Assembly

01 - Social Area / Void

02 - Exhibition

03 - Restaurant

04 - Meeting Room

05 - Terrace

06 - Indoor Track

07 - Women's Gym

AL-OUNS الأونس

Designed for warmth, built for connection



Graduation Project
Hanan Yousef Saadeh 202210596
Supervised By Prof. Dr. Osama Ali

This project reimagines active aging as a stage of connection, creativity, and active living. It addresses the need for inclusive spaces in Jordan that support well-being, independence, and community belonging. Through health, learning, and social engagement, it promotes active aging and enhances quality of life.

Concept
Courtyard of memory

The project transforms the courtyard into the emotional and social anchor of the center. Inspired by the warmth of pre-digital communities, the "Courtyard of memory" fosters connection, belonging, and active interaction for adults aged 50-80, reclaiming the courtyard as a space for shared stories and new memories.



- SWOT Analysis**
- Strengths**
- Innovative concept
 - User-centered design
 - Flexible expansion potential
- Weaknesses**
- Low public awareness
 - Need for specialized staff
 - High implementation cost
- Opportunities**
- Spatial innovation
 - Using sustainable materials
 - Reinterpreting local identity
- Threats**
- Budget limitations
 - Future competitors
 - Changing user interests

Regulatory Compliance & Design Standards

The design follows Jordanian Building Codes, Greater Amman Municipality regulations, Civil Defense safety requirements, and universal accessibility standards. Special consideration was given to regulations associated with elderly care facilities under the Ministry of Social Development to ensure a safe, accessible, and age-friendly environment.

SDGs Addressed Through The Design

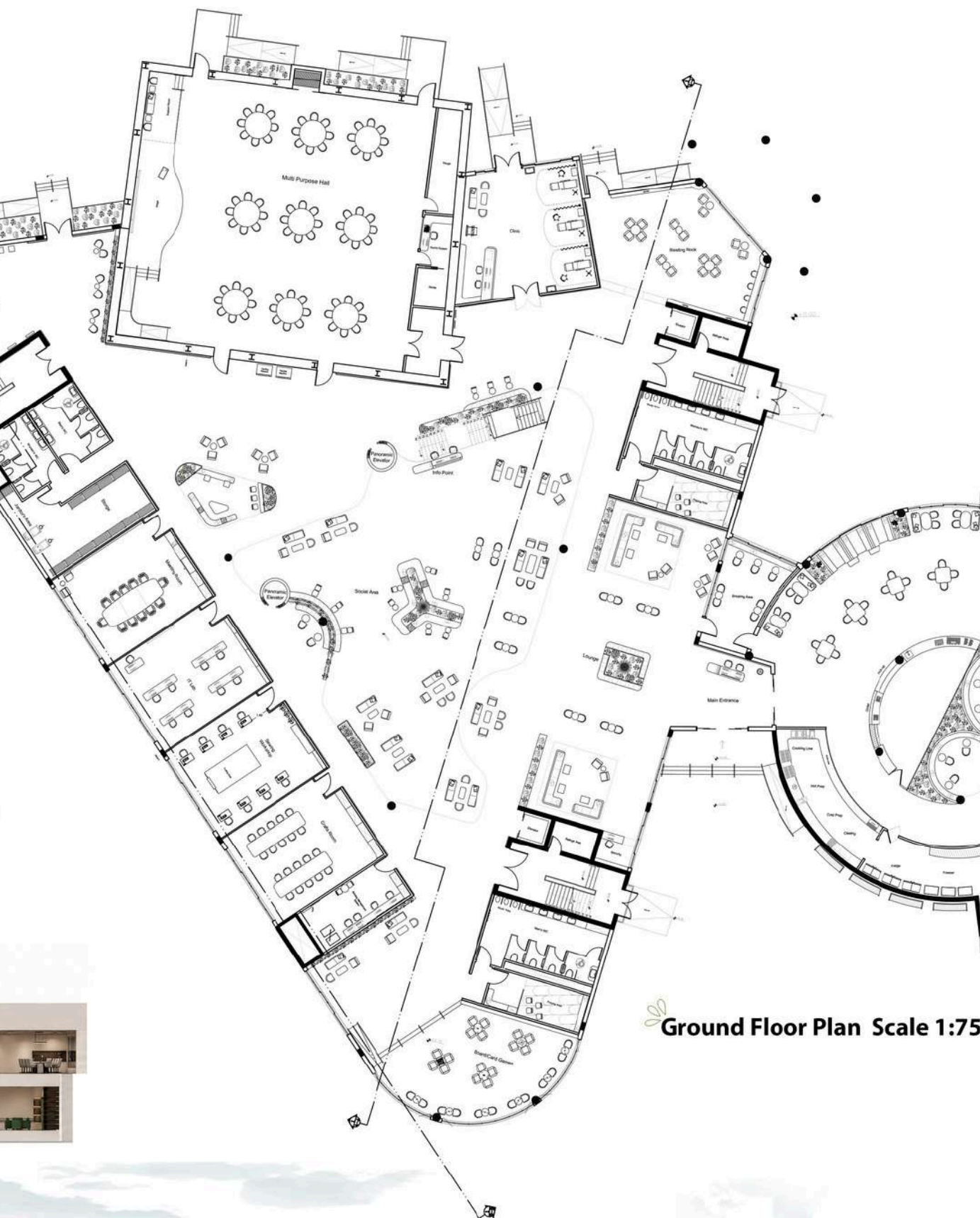
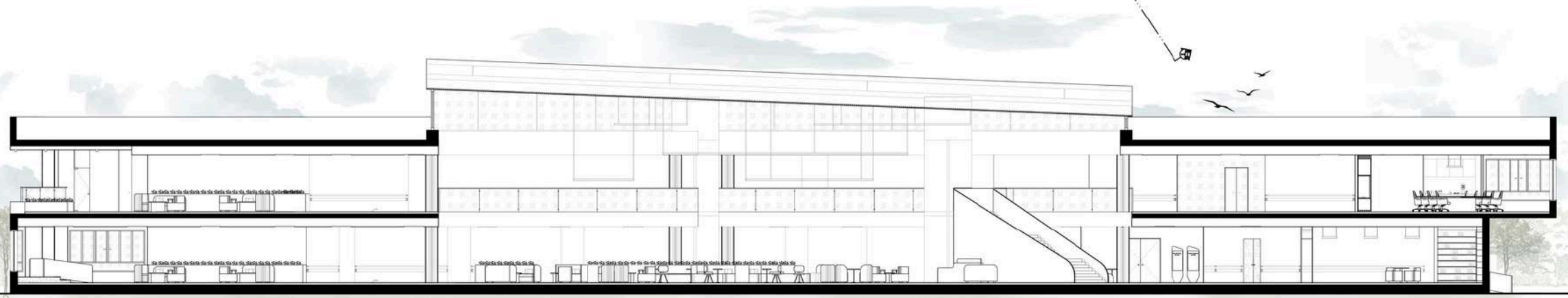
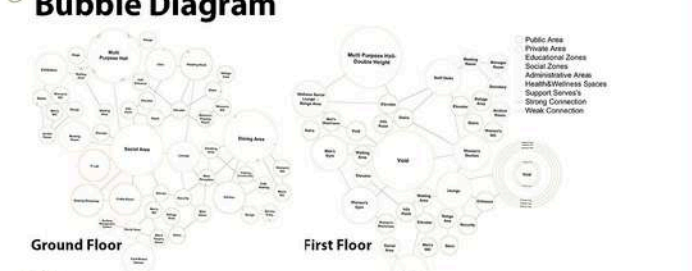
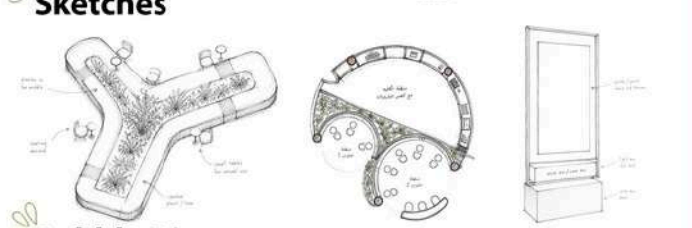
The project is primarily driven by SDG 3, promoting the physical and psychological well-being of older adults through accessible circulation, natural lighting, ventilation, and sensory-driven spaces. It also supports SDG 5 through inclusive and universally accessible design, SDG 7 through passive sustainable strategies and energy-conscious planning, and SDG 11 by encouraging walkability, accessible public spaces, and community engagement.

Universal Accessibility and ADA Integration

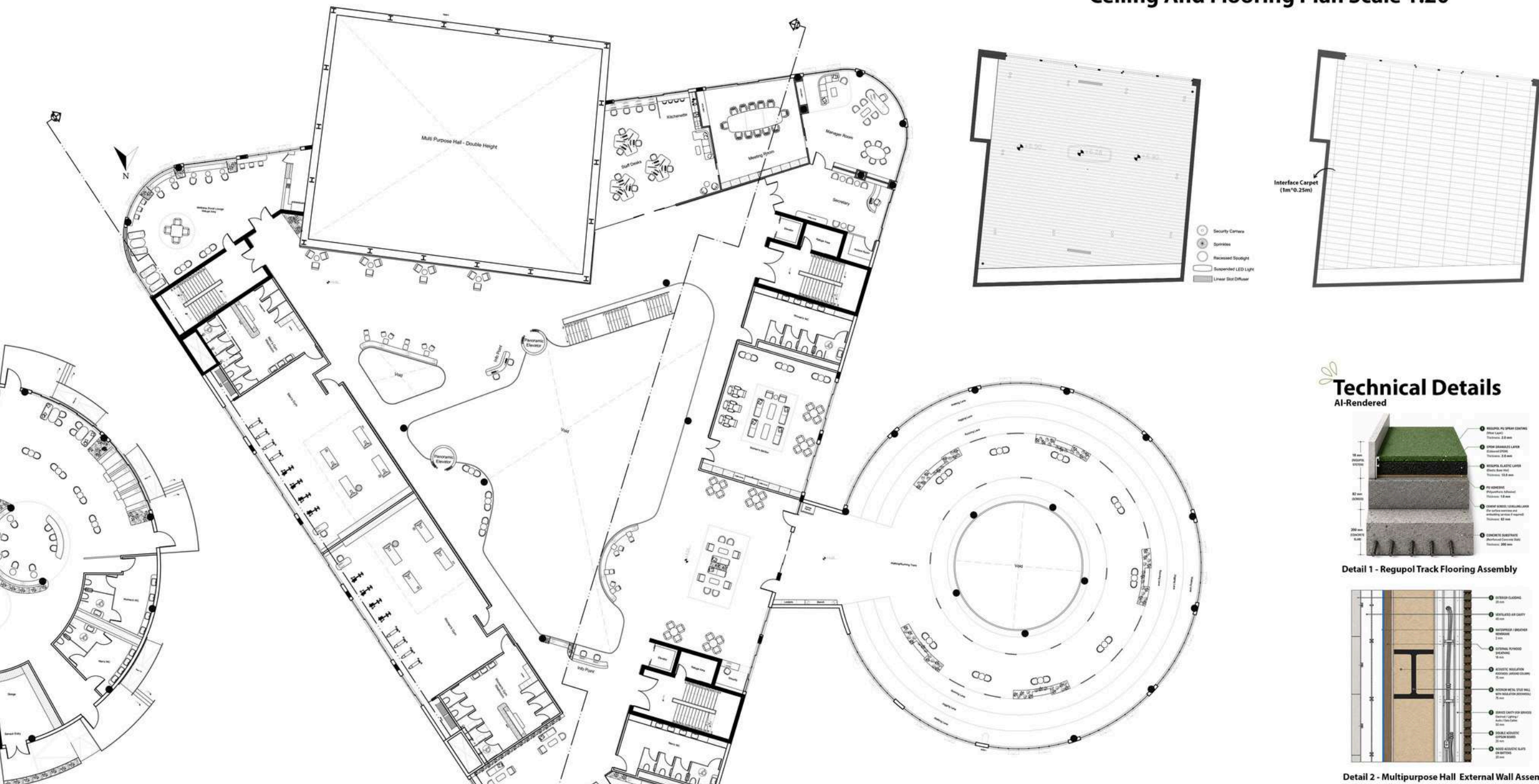
Universal accessibility is integrated through wide circulation, ramps, non-slip surfaces, accessible facilities, and clear wayfinding to enhance safety and independent movement. The design follows ADA standards to ensure accessibility and barrier-free navigation.

Interior Planting Strategy

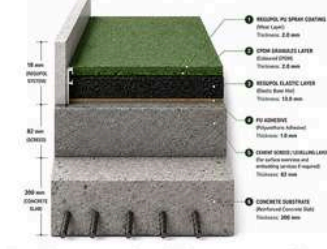
The planting strategy prioritizes low-maintenance, low-allergen indoor species that are locally available in Jordan. Selected plants require minimal irrigation, support sustainability goals, and enhance indoor well-being while encouraging a daily connection with nature throughout the center.



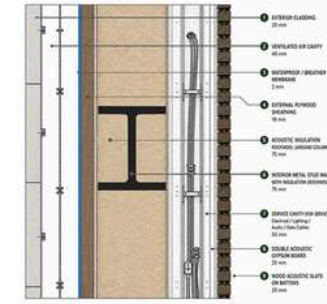
Ceiling And Flooring Plan Scale 1:20



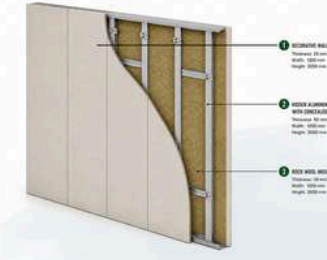
Technical Details AI-Rendered



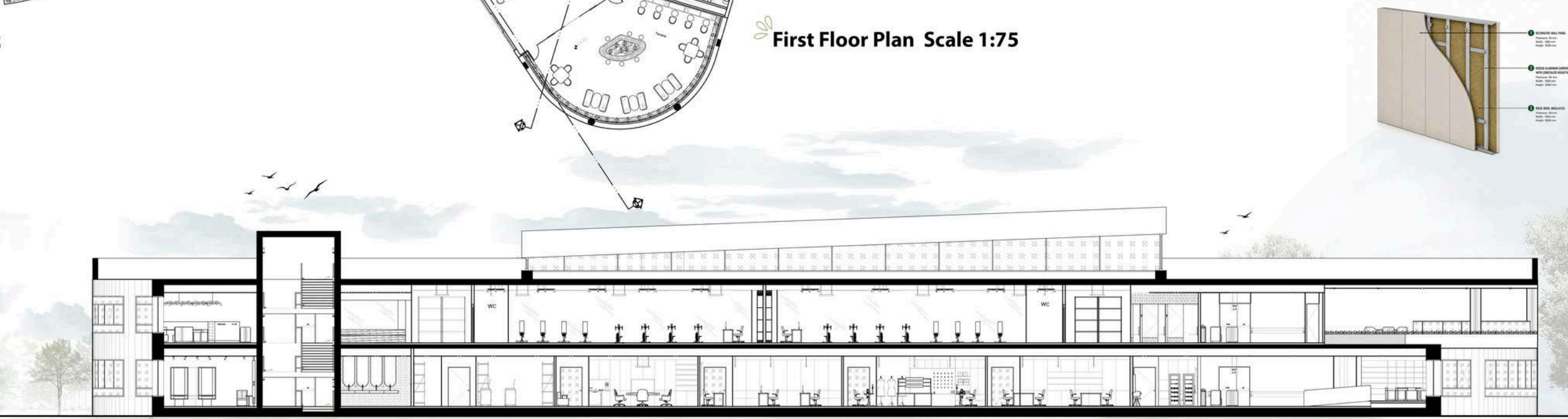
Detail 1 - Regupol Track Flooring Assembly



Detail 2 - Multipurpose Hall External Wall Assembly



First Floor Plan Scale 1:75



Section B-B Scale 1:50



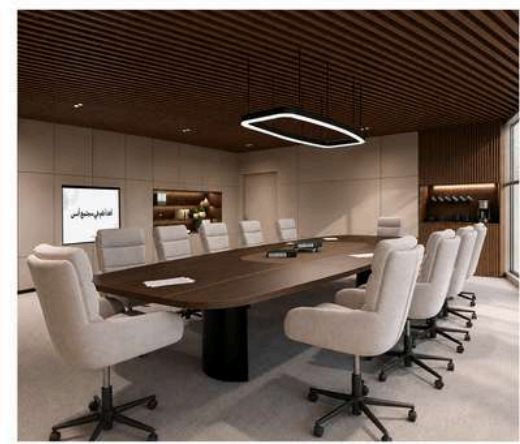
01 - Social Area / Void



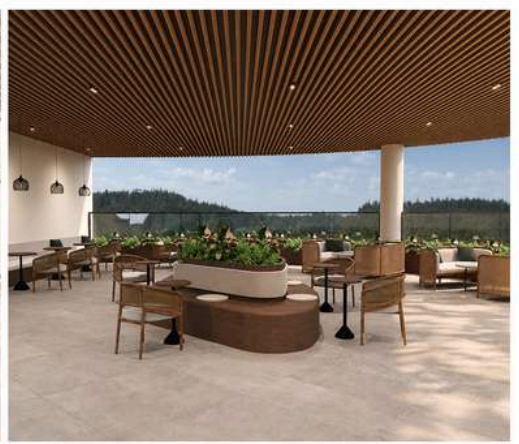
02 - Exhibition



03 - Restaurant



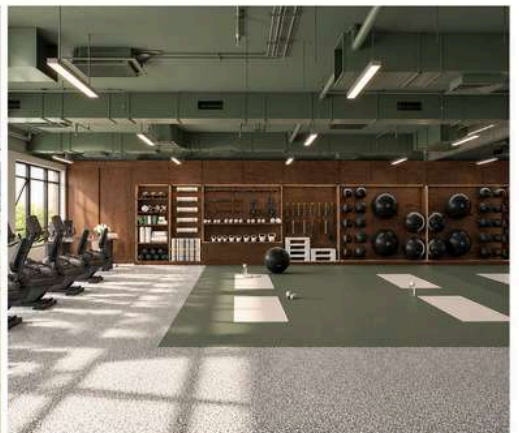
04 - Meeting Room



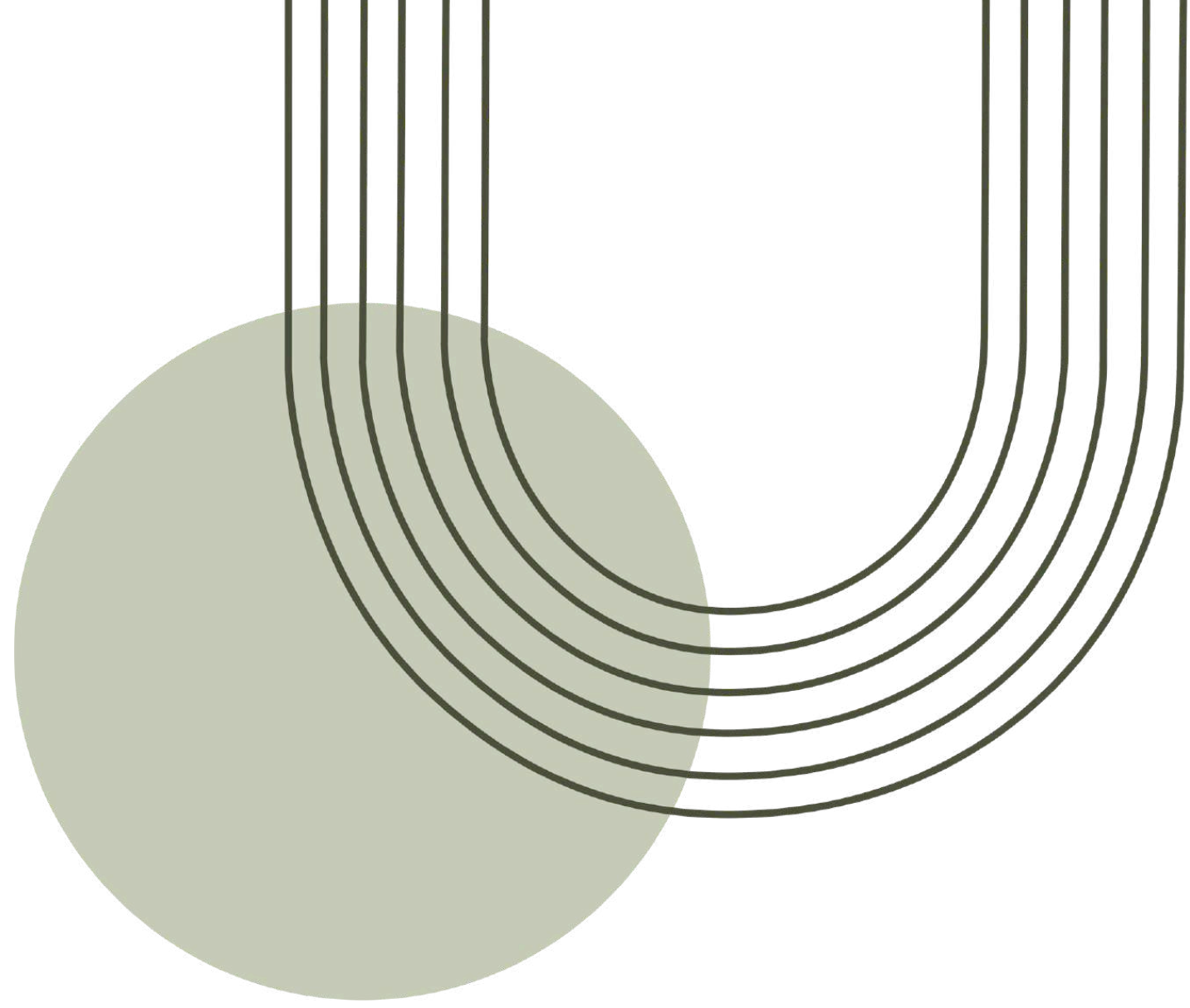
05 - Terrace



06 - Indoor Track



07 - Women's Gym



**THANK
YOU!**

