

# The Contemporary Artist's House

## Living Among Art

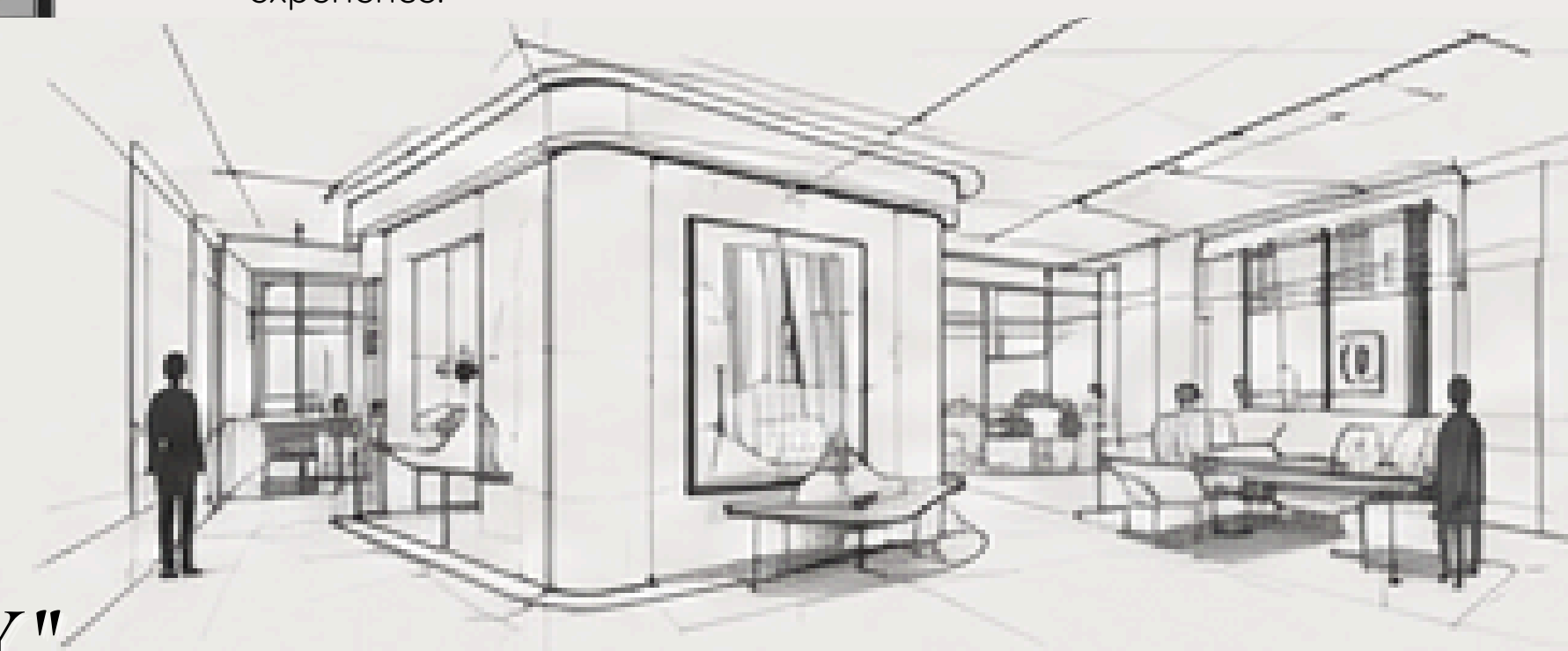


**CONCEPT**  
**The Contemporary Artist's House** combines artistic production, exhibition, and everyday living within a single residential environment. Inspired by the idea of bringing the atmosphere of an art gallery into the comfort of a home, the design creates a seamless relationship between art and daily life.  
 A minimalist design language, enriched with neutral tones and bold color accents, provides a timeless backdrop for artworks. Sculptural forms and fluid, single-line furniture establish a refined spatial identity that reflects contemporary living.

**SPATIAL ORGANIZATION**  
 The exhibition core, located at the **center** of the residence, serves as both the primary organizational element and the main display area for artworks.  
 Circulation is arranged around this central volume, creating a continuous spatial flow that encourages interaction with art throughout the home. Neutral surfaces highlight the artworks, while the surrounding living spaces maintain a warm and inviting atmosphere.

**DESIGN DECISIONS**  
 Material selection, lighting, and spatial organization form the foundation of the design. Light natural materials and clean surfaces emphasize the artworks, while warm wood textures enhance comfort within the living spaces.  
 The layout is organized according to orientation, placing social areas along the daylight-facing façade and private spaces toward the rear. A restrained ceiling design and continuous linear elements reinforce spatial unity, directing attention toward the artworks and the overall user experience.

"A HOME  
 CURATED  
 AS A  
 LIVING GALLERY."



Living Area



Laundry Room Hobby Room



Master Bedroom



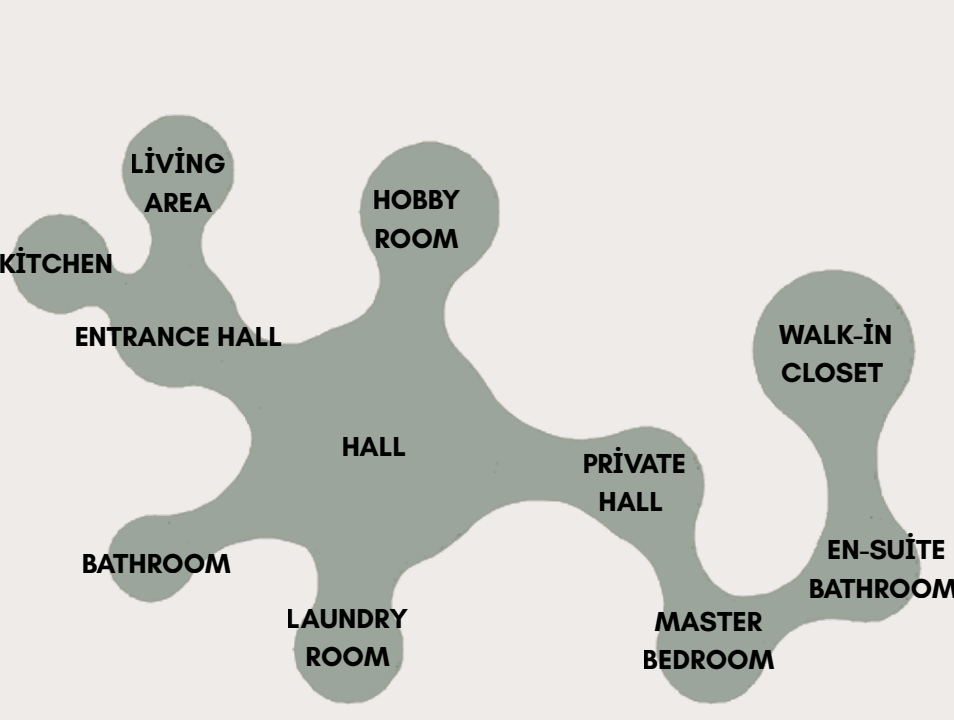
En-Suite Bathroom



Bathroom



# TECHNICAL DRAWINGS The Contemporary Artist's House

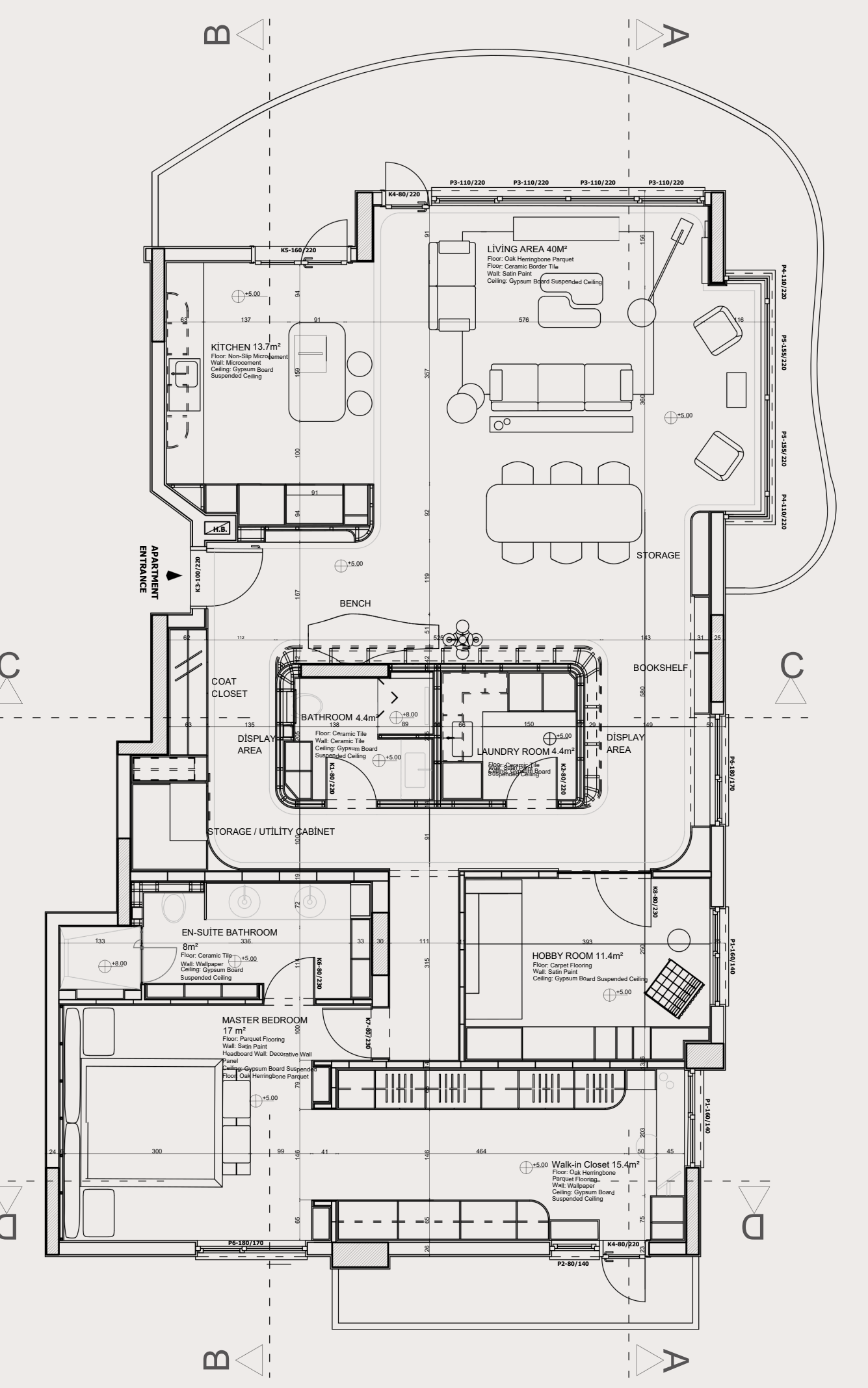
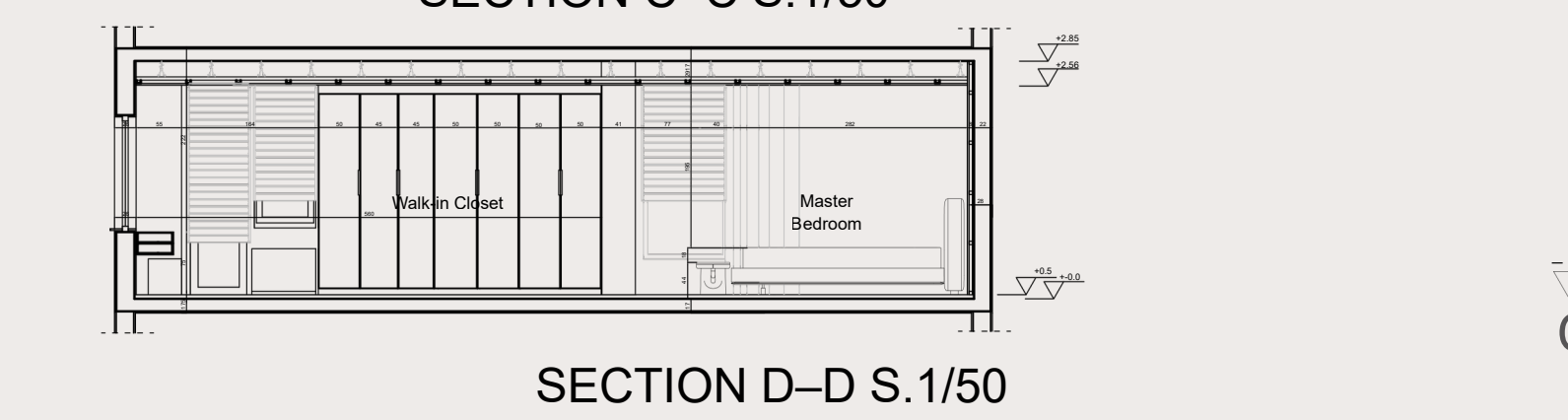
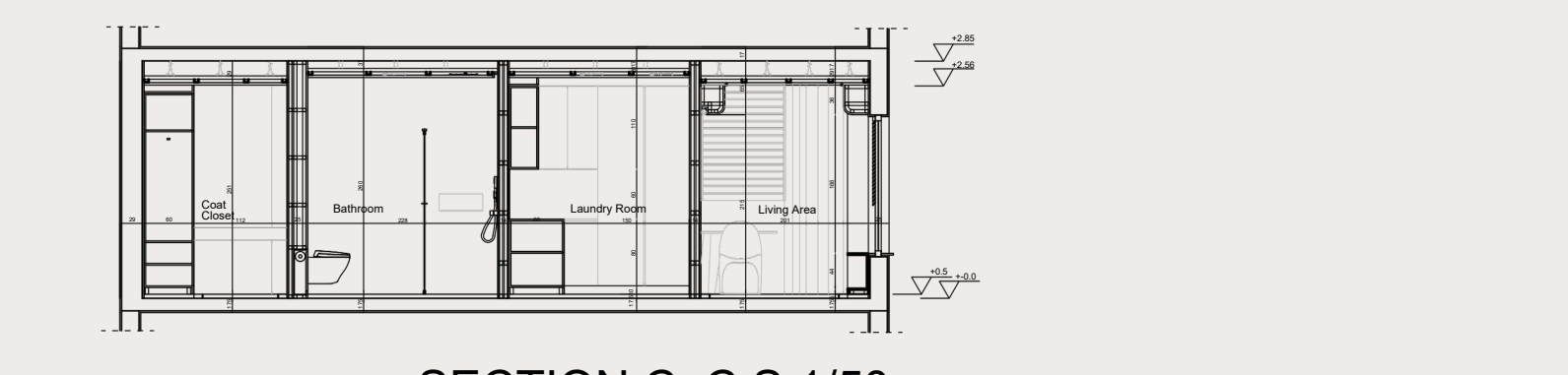
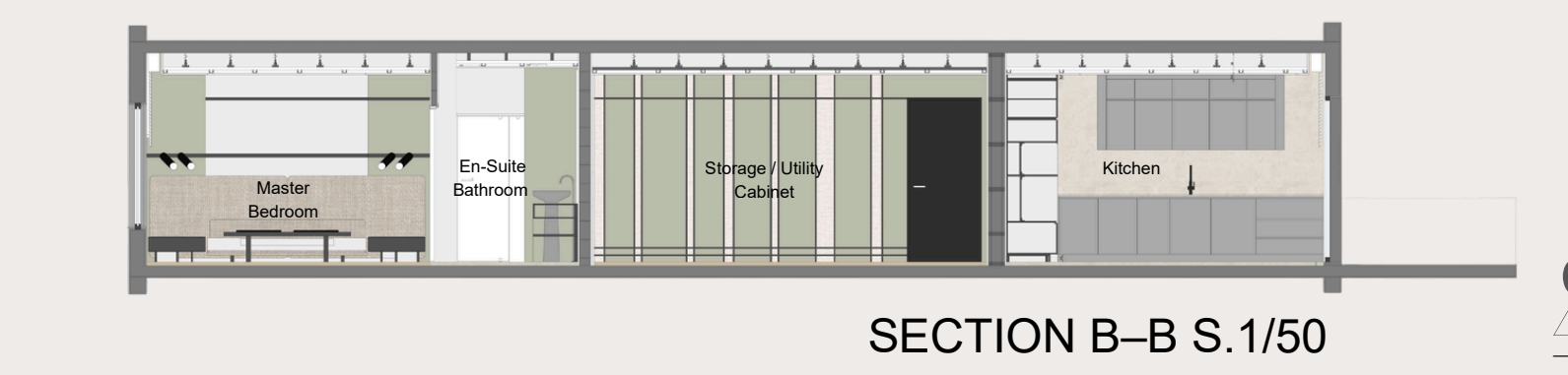
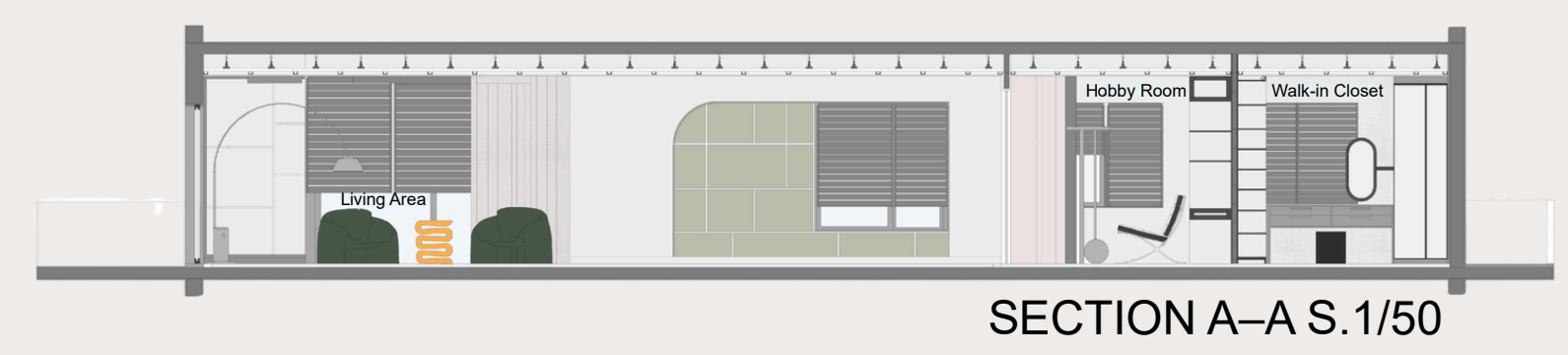


## SPACE PROGRAM

- Living Area
- Kitchen
- Living Room
- Dining Area
- Master Bedroom
- En-Suite Bathroom
- Walk-in Closet
- Hobby Room
- Laundry Room
- Bathroom

## SPATIAL ORGANIZATION

The apartment is organized around a central exhibition core that functions as the primary spatial organizer. Rather than separating rooms with conventional corridors, circulation develops around this core, creating continuous visual connections between the living spaces and the displayed artworks. Social spaces are positioned along the public façade, while private rooms are located in the quieter rear section of the residence. This organization provides a clear functional hierarchy while maintaining uninterrupted spatial continuity throughout the interior.



### ENTRANCE HALL

### KITCHEN

### MASTER BEDROOM

### WALK-IN CLOSET

### BATHROOM

### LAUNDRY ROOM