

# 01 BACKGROUND STUDY

## KUMARTULI - THE SOUL OF CRAFTSMANSHIP

Kumartuli, a traditional potters' quarter on the banks of the Hooghly River in Kolkata, is world famous for crafting idols of Goddess Durga and other deities. The lanes are filled with creativity, devotion and generations of skilled artisans. To witness it is a mesmerizing "Live Gallery" experience.

### CHARACTER OF KUMARTULI

- Rich cultural heritage
- Traditional craftsmanship
- Community oriented
- Seasonal economy
- Informal workspaces
- Strong social fabric



## WOMEN IN KUMARTULI

Women play a crucial yet often unseen role in the making of idols. They work behind the scenes in crafting, painting, preparing materials and managing households.

### CHALLENGES FACED

Women play a crucial yet often unseen role in the making of idols. They work behind the scenes in crafting, painting, preparing materials and managing households.

## WOMEN EMPOWERMENT

"Empowering Women" means creating an environment where they have the power to make their own choices, access to resources and opportunities and the ability to influence social change.

- Equality
- Education
- Skill Development
- Leadership
- Health & Well-being
- Financial Independence

"Empowered Women build empowered communities"

## WHY A WOMEN EMPOWERMENT CENTRE?

- To create a holistic platform for learning, working and growing.
- To preserve traditional art forms by empowering the women artisans.
- To provide skill, resources and opportunities for financial independence.
- To build confidence, leadership and a sense of community.

## VISION

To create an inclusive and sustainable space that empowers women of Kumartuli through skill development, education, community support and economic independence.

### OBJECTIVES

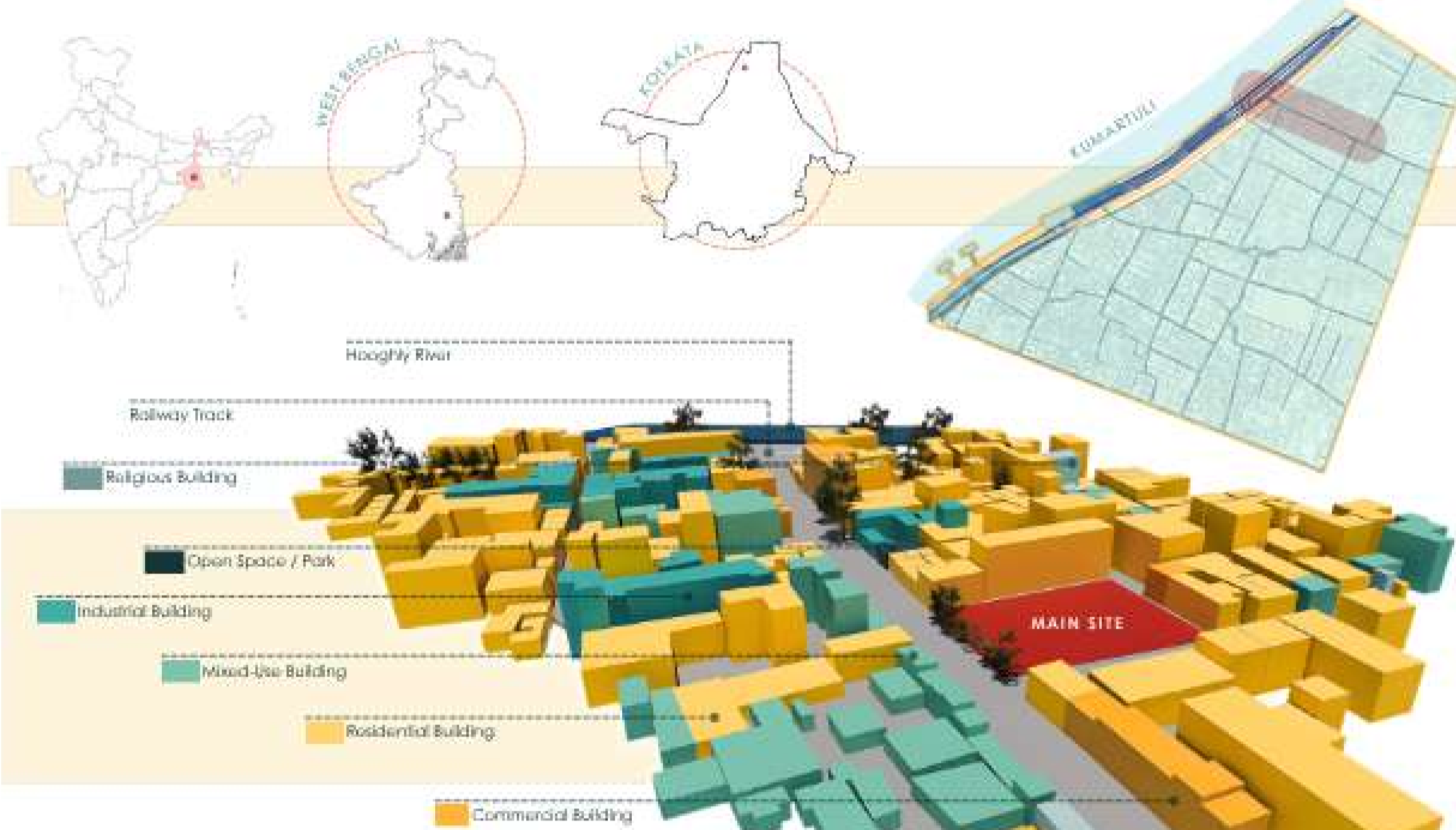
- Skill training and capacity building
- Provide safe and dignified workspaces
- Promote traditional art and culture
- Encourage entrepreneurship
- Foster community, leadership and well being



The Main Spine SOVA BAZAR STREET

# 02 ABOUT THE SITE

## LOCATION



### SITE LOCATION

Sovabazar, Malipanchghara, Shobhabazar, Kolkata, West Bengal

### SITE DETAILS

Area of the plot - 1350 sq.m.  
Current Use - Dilapidated Building  
Road Width - 12m, 6m  
Topography - Nearly Flat  
Coordinates - 22°56'43"N, 88°21'35"E

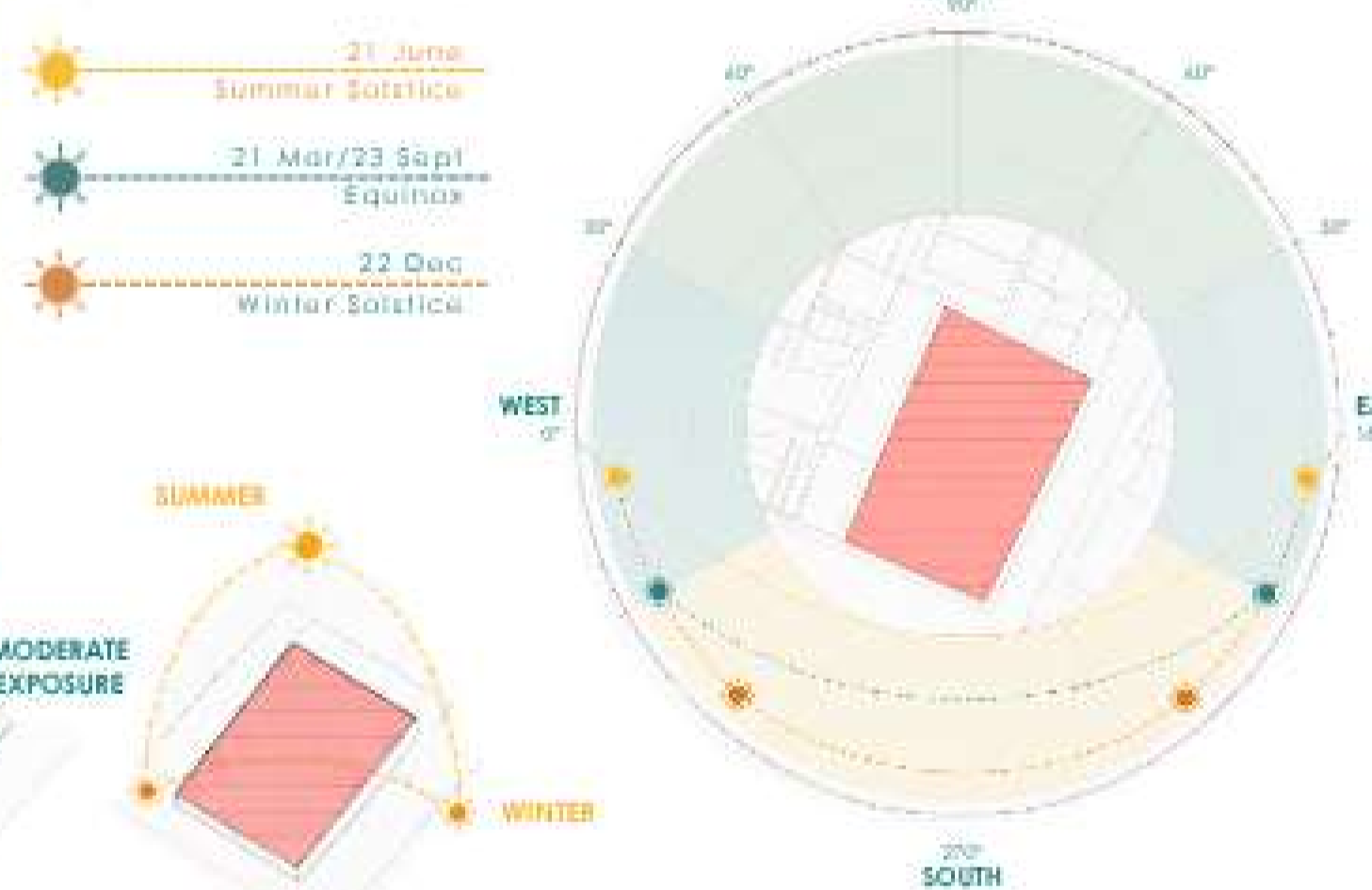
### NEARBY LANDMARKS

Kumartuli Ghat - 100 m  
Hooghly River - 120 m  
Sovabazar Rajbari - 550 m  
Ahrītola Sarbojonin Durga Puja - 700 m  
Shobhabazar Metro Station - 1.4 km

### REASONS FOR SITE SELECTION

- Clear ghat views linking to sacred river rituals visually
- Keeps existing trees as natural shade and green buffer
- Next to idol lanes for real artisan workshop experience
- Serves locals while boosting sustainable cultural tourism
- Gateway site with dual road access for smooth visitor circulation

### SUN PATH ANALYSIS



## EXISTING SITE CONDITIONS



## LAYER

Understanding the road connectivity and the hierarchy of streets for site context.



### LEGENDS

- Primary Junction
- Secondary Junction
- Tertiary Junction
- Primary Road width (16m)
- Secondary Road width (3m, 4m, 8m)
- Tertiary Road width (2.2m, 2.4m, 3.4m)

### SITE FEATURES

- Dual arterial access facilitating multi-directional circulation.
- Existing canopy providing microclimate mitigation and spatial identity.
- Unobstructed sightlines toward the ghat establishing cultural and contextual linkage.
- Direct connection to the spine of Kumartuli.
- Adjacency to traditional artisan quarter preserving cultural continuity.

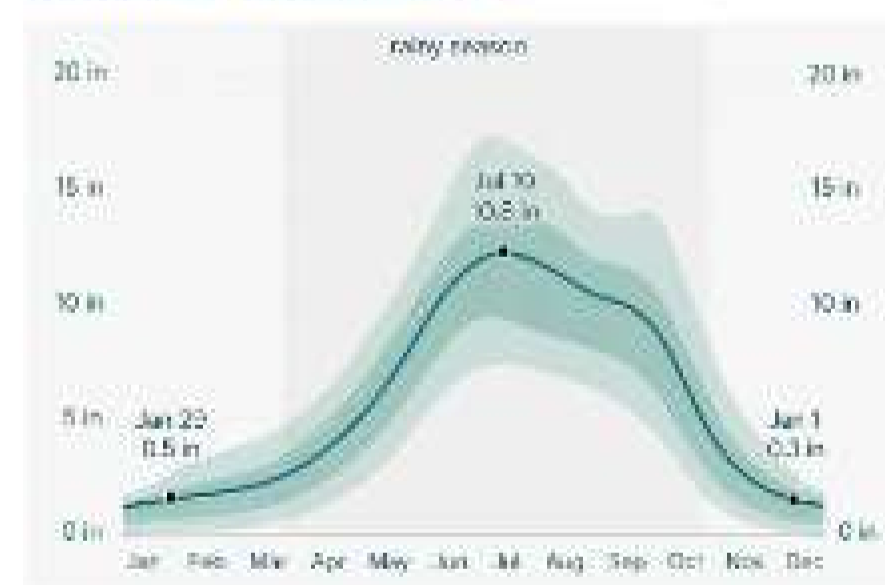
# 03 SITE ANALYSIS

## SHADOW ANALYSIS



The shadow analysis of the Kumartuli site shows varying solar exposure throughout the day due to the dense urban fabric surrounding it. At 7am, the site receives partial eastern sunlight with long shadows cast from adjacent built masses, while the road-edge trees create filtered shading along the western edge. By 2pm, the site experiences maximum solar exposure as the sun reaches a higher angle, making the central portion highly illuminated with minimal obstruction. At 5pm, taller surrounding structures on the western side cast significant shadows across the site, reducing direct sunlight penetration. This pattern highlights strong southern and afternoon exposure, emphasizing the need for shaded transitional spaces and climate-responsive design strategies.

## RAINFALL ANALYSIS



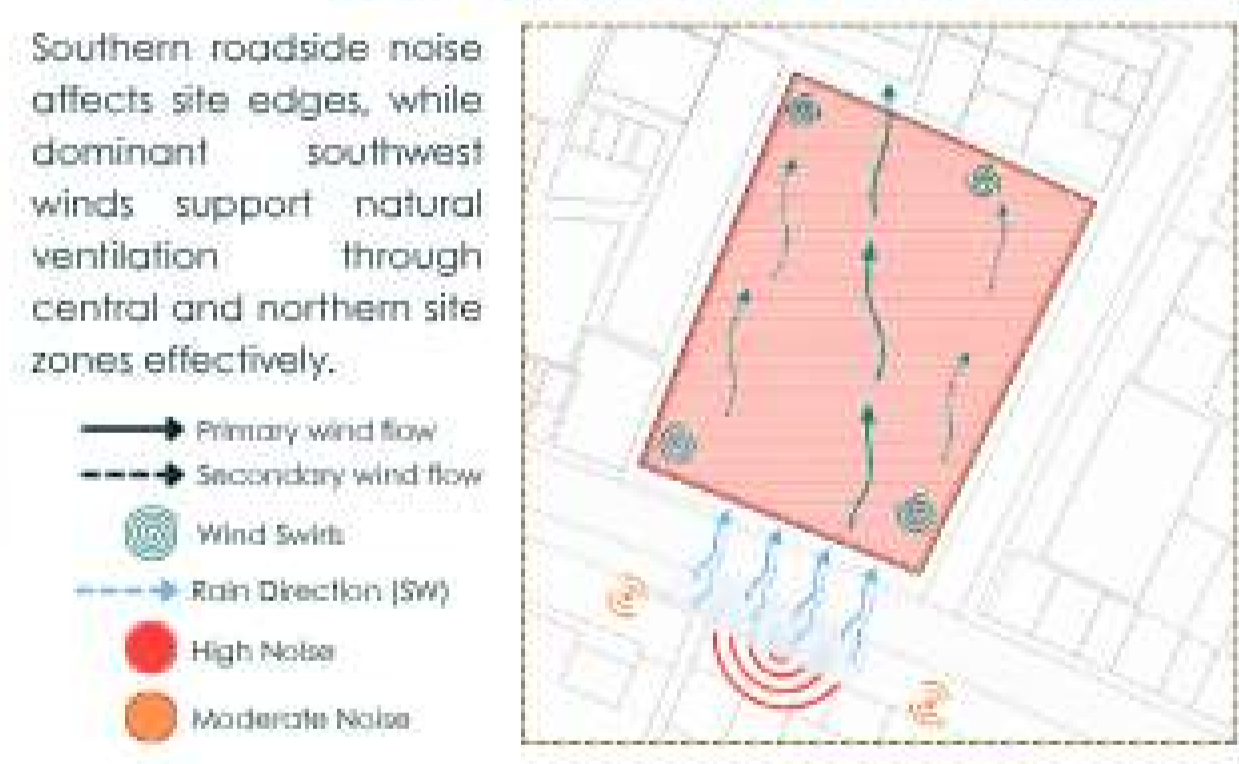
Seasonal rainfall peaks during monsoon, influencing drainage, shading, and pedestrian movement.

## TEMPERATURE ANALYSIS



Warm temperatures dominate yearly climate, encouraging passive cooling and shaded outdoor spaces.

## WIND DIRECTION & NOISE ANALYSIS



Southern roadside noise affects site edges, while dominant southwest winds support natural ventilation through central and northern site zones effectively.

## SOIL STRATIFICATION



**MADE GROUND / FILL** - Loose, mixed fill with brick fragments, ash, organic matter.  
**SOFT CLAY / SILT** - Soft to firm, high compressibility, grey clayey silt with organics.  
**SILT / CLAY** - Medium stiff, grey silt clay, low plasticity.  
**SANDY SILT** - Medium dense, fine sand with silt, grey.  
**DENSE SAND** - Dense, fine to medium sand, grey, good bearing structure.

## EXISTING VEGETATION



### SOIL ANALYSIS

- Dense sand layer provides strong bearing capacity for foundations
- Sandy silt allows good drainage, reducing water stagnation risks
- Silt clay layers enable moisture retention supporting landscape growth
- Existing vegetation offers natural shading improving microclimate comfort
- Organic top soil supports planting, enhancing ecological and visual quality



### EXISTING VEGETATION

- GULMOHAR (DELONIX REGIA)**: Reduces the urban heat island effect and improves the microclimate.
- BANANA PLANTS (MUSA)**: The banana plants add varied texture and a tropical aesthetic. Acts as a visual restorative element within the built environment.
- NEEM TREE (AZADIRACHTA INDICA)**: Neem trees have a semi-deciduous nature, providing dense shade during the hot summer months to improve the microclimate while allowing more light to filter through during the winter.

CANOPY SPREAD  
A: 10 TO 15M  
B: 8 TO 10M  
C: 2 TO 3M



### ACTIVITIES AROUND THE SITE

ARTISANS CREATING IDOLS LOCAL CRAFT STALLS OF THE IDOL'S ACCESSORIES UNSAFE CROSSING OF RAILWAY TRACK LOCALS CROSSING/SITTING ON THE RAILWAY TRACK ENCROACHMENT OF STREET VENDORS ONTO THE PEDESTRIAN PATHWAY DAILY MOVEMENT OF LOCALS ON THE MAIN SPINE

# 04 SWOT ANALYSIS

- Strengths (S):**
  - Dense network of tertiary lanes enhances pedestrian permeability, encouraging walkability, community interaction and accessible movement throughout Kumartuli's urban fabric.
  - Strong craft based identity and active public streets create culturally vibrant surroundings supporting women led skill development and community participation.
- Weaknesses (W):**
  - Women artisans lack formal recognition and dedicated workspaces, often operating from cramped domestic corners with inadequate spatial conditions.
  - Seasonal congestion between tourists, pedestrians and idol transportation creates severe circulation conflicts, reducing accessibility and functional urban efficiency.
- Opportunities (O):**
  - Underutilized courtyards and residual spaces can transform into inclusive community platforms supporting women's training, exhibitions and collective engagement.
  - Existing craft tourism offers opportunities for women-led entrepreneurship, cultural workshops and local economic empowerment through public interaction spaces.
- Threats (T):**
  - Rapid commercialization and tourism pressure threaten traditional neighborhood character, displacing local artisans and weakening existing social community networks.
  - Poor sanitary infrastructure and open public urination create unsafe, unhygienic streetscapes, negatively affecting women's comfort, dignity and public participation.

# 01 PROJECT BRIEF

**PROJECT TYPE**  
Women Empowerment Centre

**LOCATION**  
Kumartuli, Kolkata

**SITE CONTEXT**  
The site is defined by the primary street that connects to the main spine, and a direct interface with the Hooghly River.

**OBJECTIVE**  
To create a safe and inclusive environment that fosters socio-cultural resilience for women. The centre aims to restore linkages between craft & community

**USER GROUP**  
Local women artisans, residents, Tourist, and the wider artisanal ecosystem of Kumartuli.

**KEY SPACES**  
Resilient workshops and training space, exhibition galleries for craft, community hall, creche, Restaurant, and open community spaces

**DESIGN APPROACH**  
A context-sensitive approach that strengthens livelihood resilience through flexible workspaces, and utilizes sustainable, climate-responsive architecture.



## AREA STATEMENT (all dimensions are in sq.m.)

FUNCTION	AREA
Indoor Dining	80
Semi - open dining	40
Kitchen	20
Toilet W/F	20

FUNCTION	AREA
Shop space	4

FUNCTION	AREA
Food Kiosk	115
Screening Area	75
Exhibition Area	40
Toilet W/F	30

FUNCTION	AREA
Hall	90

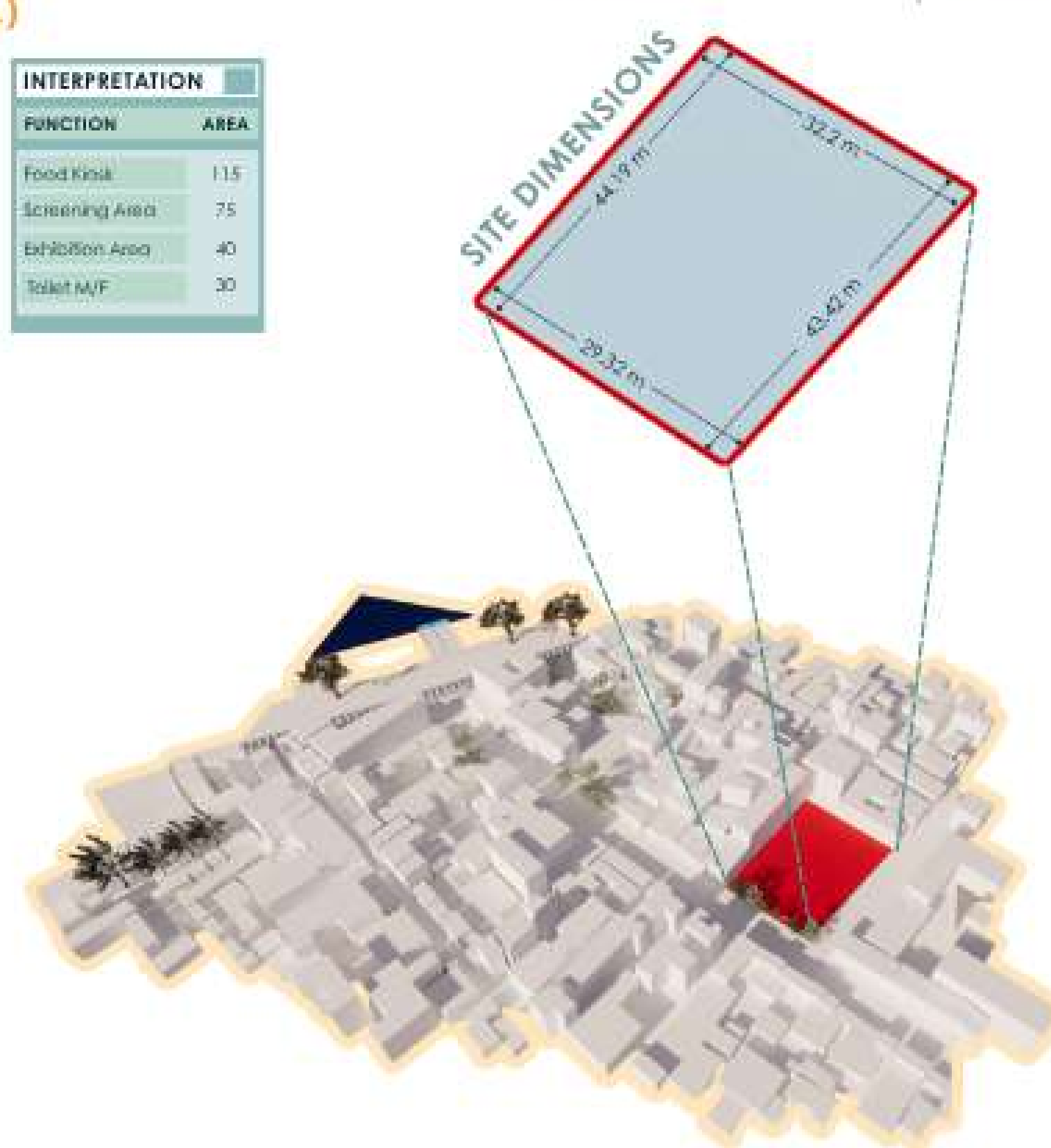
FUNCTION	AREA
Male	15
Female	15

FUNCTION	AREA
Reception area	15
Director's Office	12
Toilet W/F	10

FUNCTION	AREA
Sick Room	15
Staff room	12

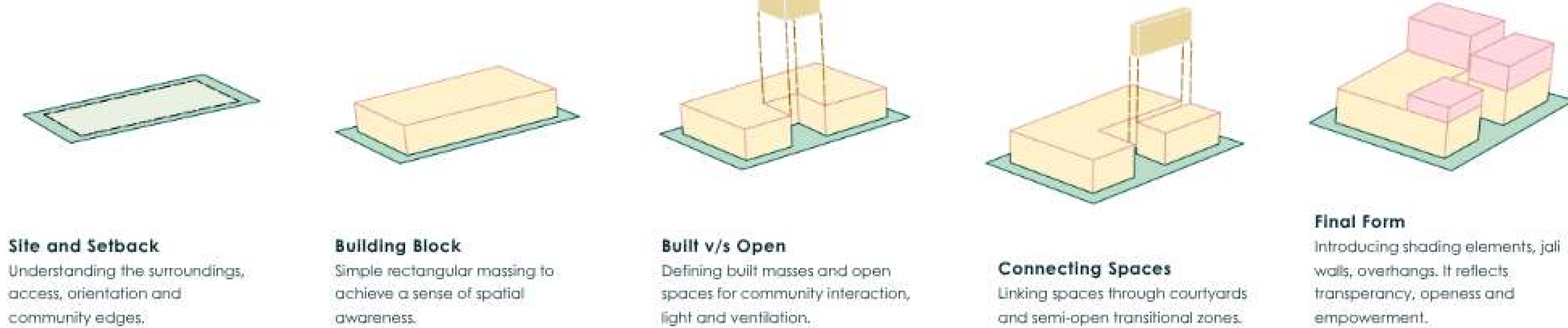


# 02 CONCEPT & FORM EVOLUTION

## CONCEPT



## FORM DEVELOPMENT



## OPPORTUNITIES



## MATERIAL & TEXTURE PALLETTE



## DESIGN PRINCIPLES



# 03 EVOLUTION OF DESIGN STRATEGIES

CLIMATE RESPONSIVE DESIGN	NATURAL LIGHT & VENTILATION	COMMUNITY CONNECT	INCLUSIVE & SAFE SPACES	LOCAL IDENTITY & CULTURE	SUSTAINABILITY STRATEGIES
<p>Responding to hot-humid climate of Kolkata</p> <ol style="list-style-type: none"> <li>EFFECTIVE SHADING DEVICE SYSTEMS (reduce solar gain while improving indoor thermal comfort)</li> <li>OPTIMIZED BUILDING ORIENTATION STRATEGY (maximize daylight while minimizing heat gain and glare)</li> <li>HIGH PERFORMANCE INSULATED ROOF (reduce heat transfer for indoor temperature stability)</li> <li>EFFICIENT RAINWATER HARVESTING SYSTEMS (collect and reuse rainwater for non-potable uses)</li> <li>SUSTAINABLE PERMEABLE SURFACE DESIGN (allow groundwater recharge reducing surface runoff)</li> <li>PROPER WASTE SEGREGATION PRACTICES (separate waste streams for recycling and efficient disposal)</li> <li>CONTEXTUAL NATIVE PLANTING STRATEGY (for reducing water demand and maintenance)</li> <li>WATER EFFICIENT FIXTURE SYSTEMS (minimize water consumption through fixtures and reuse)</li> <li>NATURAL CROSS VENTILATION STRATEGY (enhance airflow improving indoor comfort)</li> </ol>	<p>Maximizing daylight while minimizing heat gain</p> <ol style="list-style-type: none"> <li>Large Openable Windows (maximize daylight and ventilation)</li> <li>High Level Windows (bring in daylight and reduce heat gain)</li> <li>Butterfly Roof (reduces hot air out)</li> <li>Roof Overhang (reduces direct sun and rain exposure)</li> <li>Cross Ventilation (continuous airflow through spaces)</li> <li>Light Coloured Interiors (reflects light deeper into the spaces)</li> <li>Natural Light (penetrates deep into the space)</li> <li>Shading Devices / Louvers (limit direct sun while allowing airflow)</li> <li>Overhangs (shade walls and windows)</li> </ol>	<p>Creating spill-out spaces that encourage interaction</p> <ol style="list-style-type: none"> <li>SHARED BALCONIES AND TERRACES (Encourage interaction through semi-private shared outdoor living spaces)</li> <li>CENTRAL COURTYARDS FOR GATHERING (Act as social hubs for activities and community engagement)</li> <li>COMMUNAL SPACES FOR EVENTS (flexible areas designed for celebrations, meetings, and gatherings)</li> <li>ACTIVE EDGES WITH VISUAL CONNECTIONS (Create lively interfaces improving safety and spatial engagement)</li> <li>GREEN SPACES FOR WELL BEING (Provide relaxation zones enhancing mental and physical health)</li> <li>INCLUSIVE SPACES FOR ALL USERS (Accessible design catering to diverse age groups and abilities)</li> <li>SEMI-OPEN SPACES FOR INTERACTION (Blur indoor-outdoor boundaries enabling informal social encounters)</li> </ol>	<p>Designing for comfort, dignity and accessibility</p> <ol style="list-style-type: none"> <li>SAFE AND SECURE ENVIRONMENT (well-lit spaces with surveillance ensuring user safety)</li> <li>UNIVERSAL ACCESS FOR ALL (design ensures accessibility for diverse users and abilities)</li> <li>NATURAL LIGHT AND VENTILATION (promotes daylight and airflow for healthy indoor comfort)</li> <li>INCLUSIVE AMENITIES FOR USERS (facilities designed to serve all age groups equally)</li> <li>COMFORTABLE AND DIGNIFIED SPACES (ensure privacy, ease, and respect in spatial experience)</li> <li>TACTILE GUIDANCE FOR NAVIGATION (tactile paths assist visually impaired in movement)</li> <li>BARrier-FREE CIRCULATION DESIGN (facilitates movement without obstacles across all spaces)</li> </ol>	<p>Reflecting the essence of Kumartuli</p> <ol style="list-style-type: none"> <li>BAMBOO FRAMEWORK STRUCTURAL SYSTEM (lightweight, flexible structure supporting temporary and permanent setups)</li> <li>CLAY IDOL CRAFT TRADITION (supports traditional sculpting practices using locally sourced materials)</li> <li>ARTISAN WORKSPACE DESIGN STRATEGY (provide functional, organized, and efficient making environments)</li> <li>STREET WORKSHOP IDENTITY PRESERVATION (retains vibrant street-based making culture and public engagement)</li> <li>CULTURAL PROCESS SPATIAL INTEGRATION (reflects sequential craft processes through spatial planning design)</li> </ol>	<p>Reducing environmental impact</p> <ol style="list-style-type: none"> <li>CLIMATE RESPONSIVE SHADING DEVICES (reduce heat gain while allowing filtered daylight indoors)</li> <li>DEEP ROOF OVERHANG STRATEGY (protect walls from rain and harsh solar exposure)</li> <li>EFFECTIVE CROSS VENTILATION DESIGN (enhance airflow removing humidity and indoor heat buildup)</li> <li>WATER BODY MICROCLIMATE COOLING (evaporative cooling lowers surrounding ambient air temperature)</li> <li>OPEN VERANDAH TRANSITION SPACES (semi-open buffers improving comfort and social interaction)</li> <li>NATIVE VEGETATION COOLING STRATEGY (shade surfaces and reduce heat through evapotranspiration)</li> </ol>
ANALYZE	INTEGRATE	RESPOND	ENHANCE	EMPOWER	

## SERIAL VISION THEORY

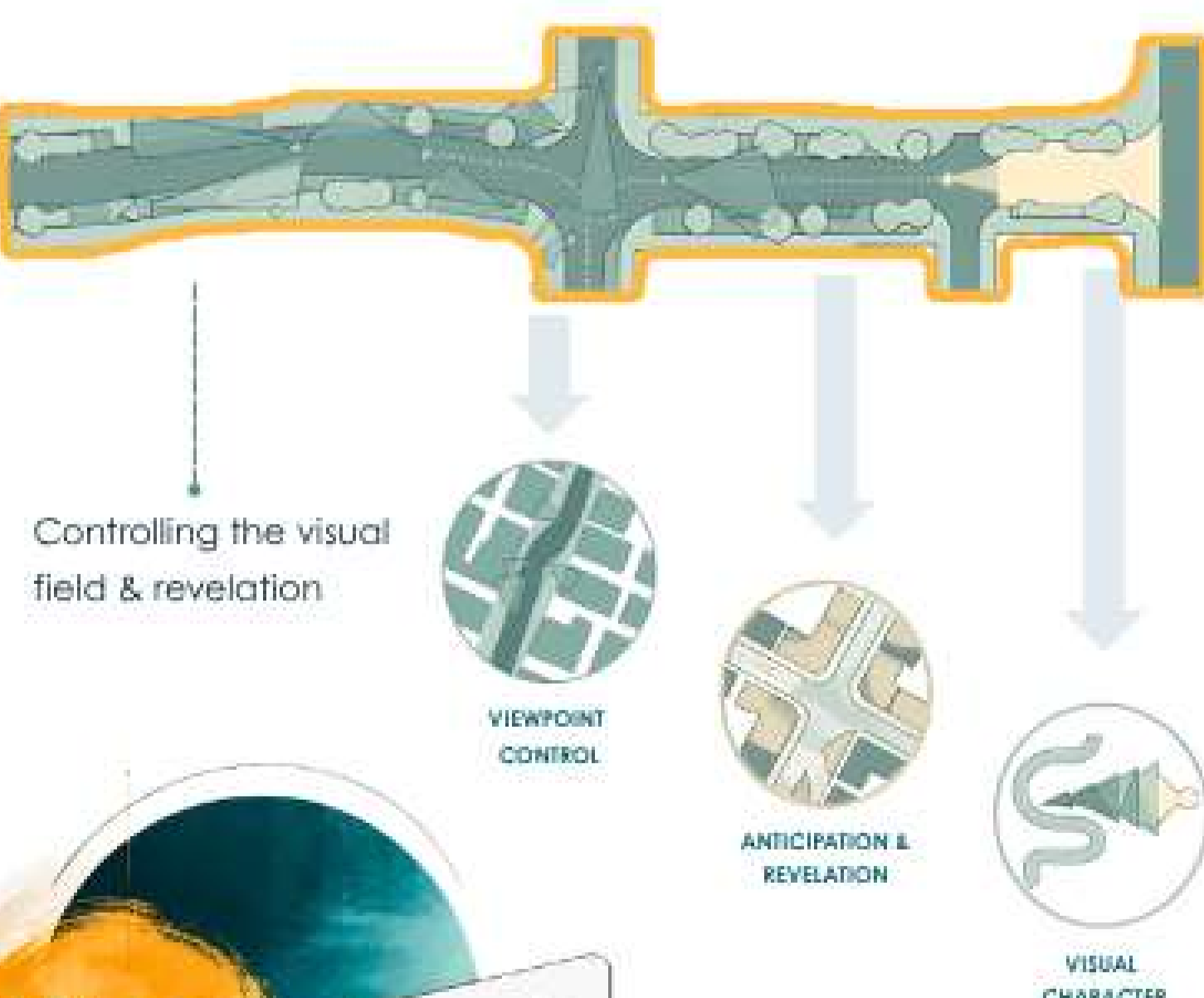
The design is guided by Colin Rowe's "Serial Vision Theory" where a sequence of spatial experiences unfolds as one moves through interconnected spaces

## APPLICATION IN OUR DESIGN

The journey through the central curb is curated as a series of visual frames, glimpses and reveals as you move further exploring it.

## KEY PRINCIPLES OF CULLEN'S THEORY

Strategic use of visual barriers and goals

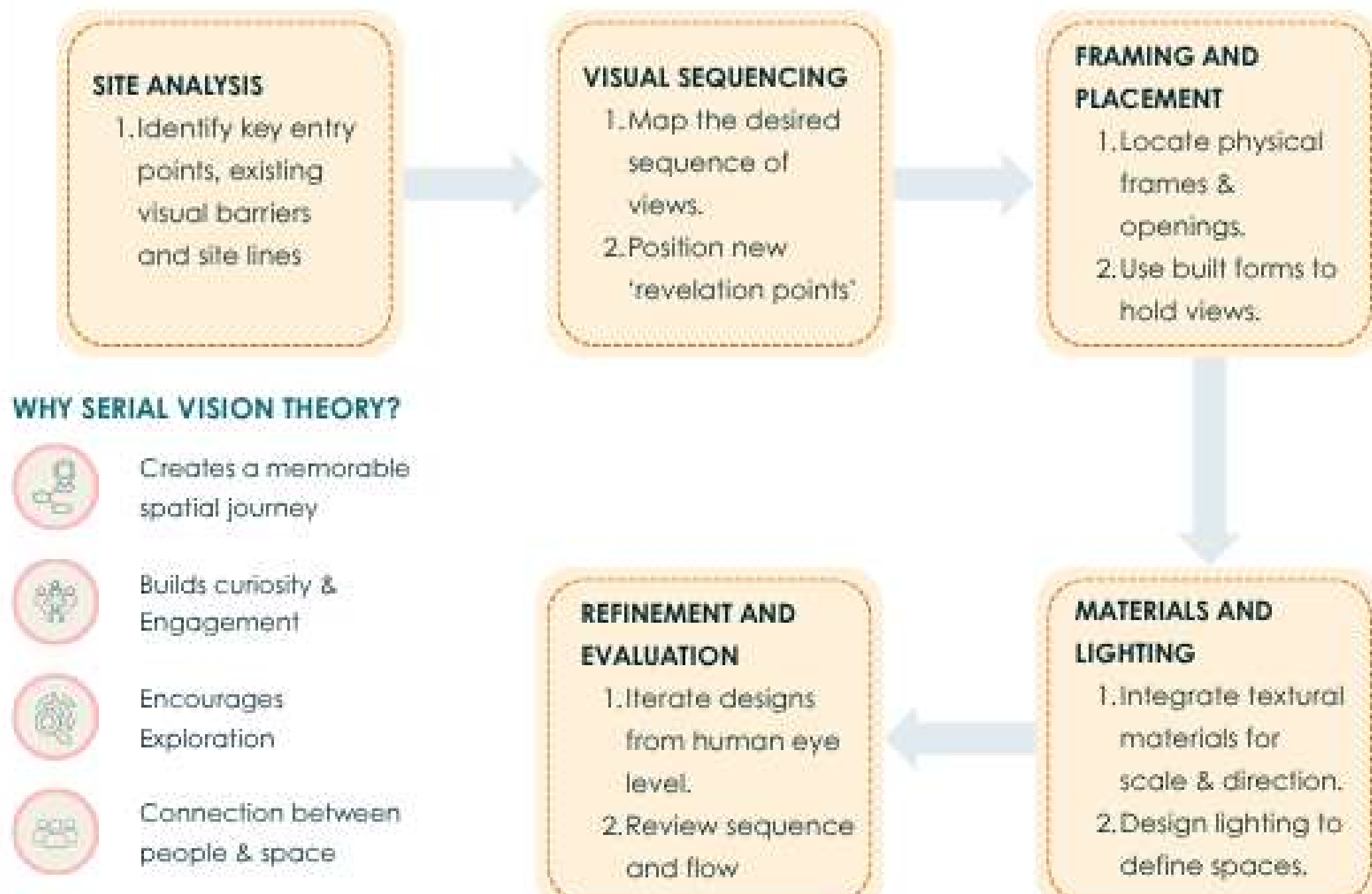


Controlling the visual field & revelation



“From every Changing Perspective emerges a stronger community, where women shape its culture, interaction, and urban life.”

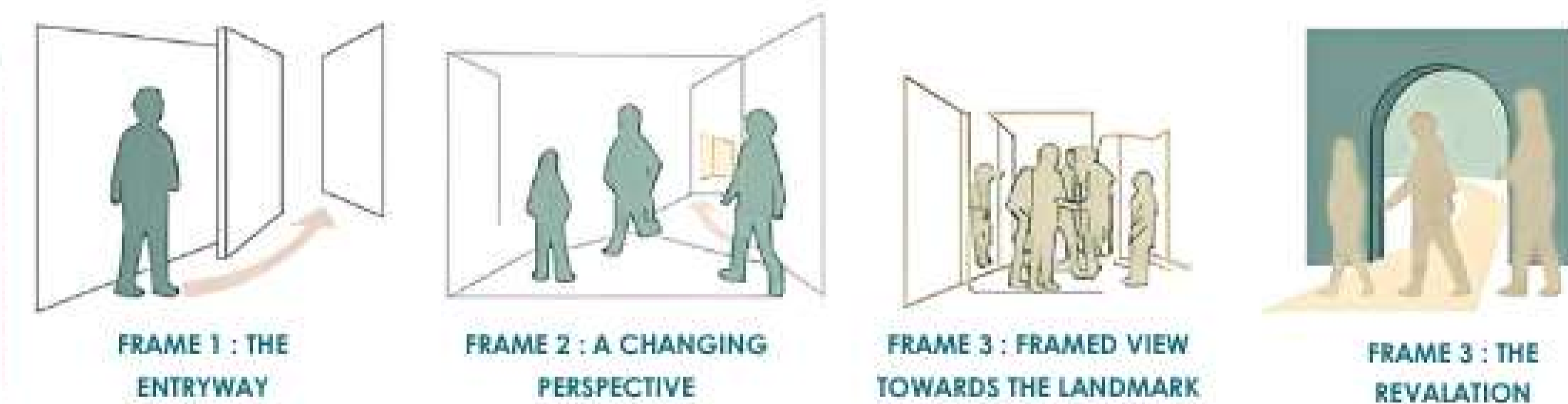
## DESIGN IMPLEMENTATION



### WHY SERIAL VISION THEORY?

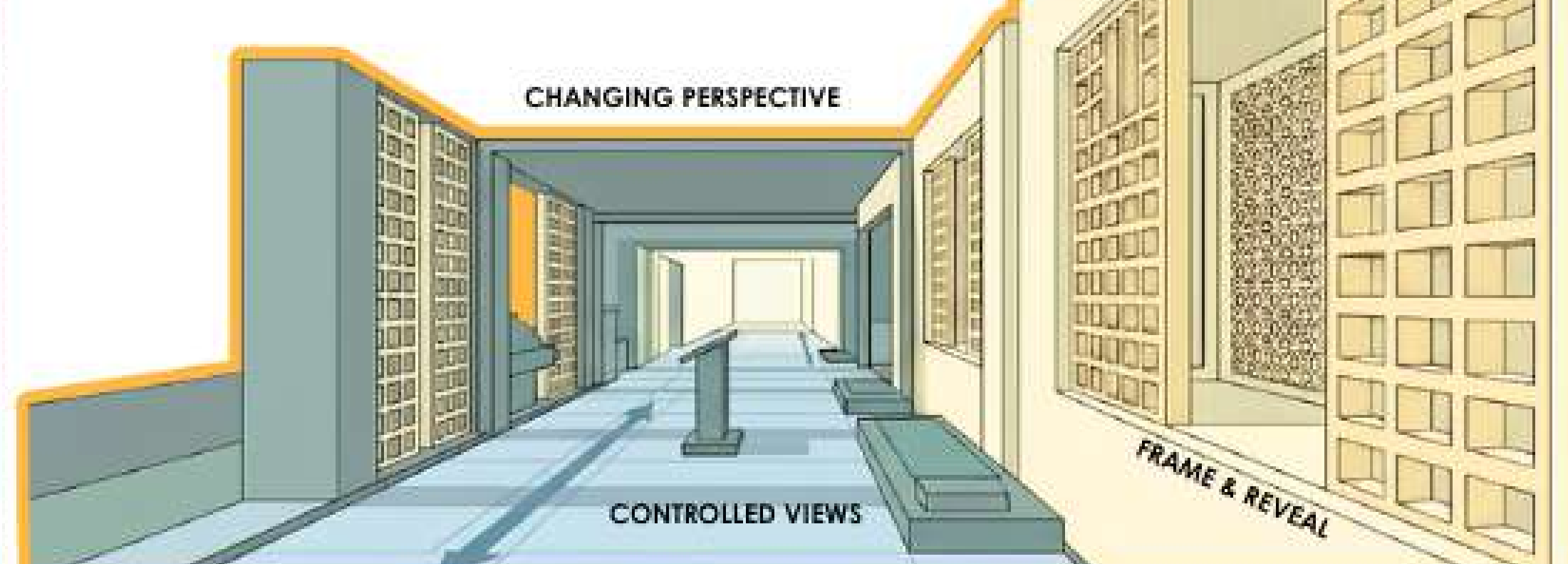
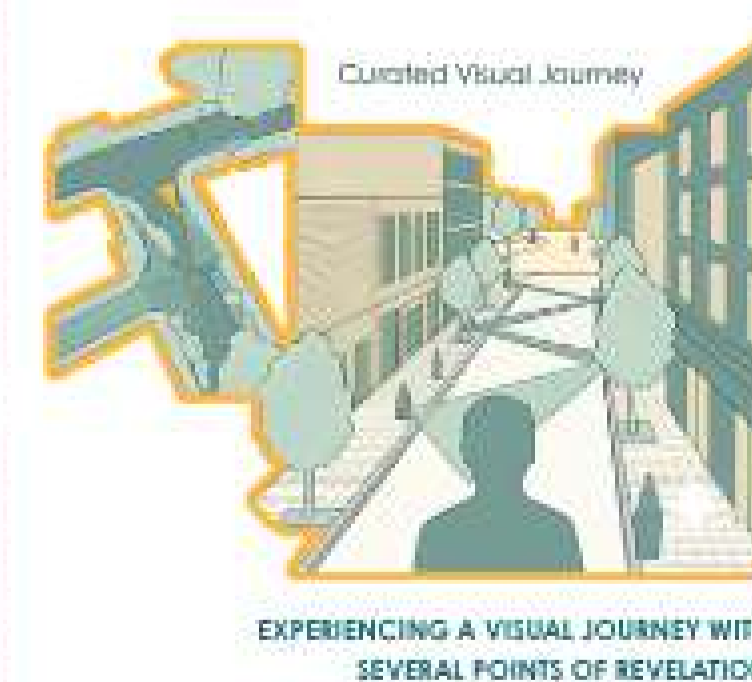
- Creates a memorable spatial journey
- Builds curiosity & Engagement
- Encourages Exploration
- Connection between people & space
- Reflects the cultural narrative of the region

# 04 URBAN THEORIES



## IMPORTANCE OF THE THEORY

- Serial Vision moves urban design away from "bird's-eye" planning (viewing a city only as a map) and focuses on the human perspective.
- By treating the city as a series of composed views, architects can create walkable, vibrant environments that feel alive rather than just functional.
- It is particularly useful in heritage revitalization and street design proposals, where the goal is to enhance the existing character of a neighborhood while making it more navigable.



## KEY PRINCIPLES ADAPTED

- Sequence & Anticipation
- Controlled Views
- Changing perspective
- Frame & Reveal
- Movement & Pause
- Spatial hierarchy

**ASTITVA AKRITI** (A Women Empowerment Centre) is envisioned as a space of resilience, growth, and identity, where women are empowered through learning, creativity, skill development, and community interaction. Rooted in the cultural essence of Kumartuli, the centre creates inclusive and nurturing environments that encourage confidence, self expression, and social connection. **"Resilience Shaping an Identity"** reflects the journey of women transforming challenges into strength while building a dignified and independent future.

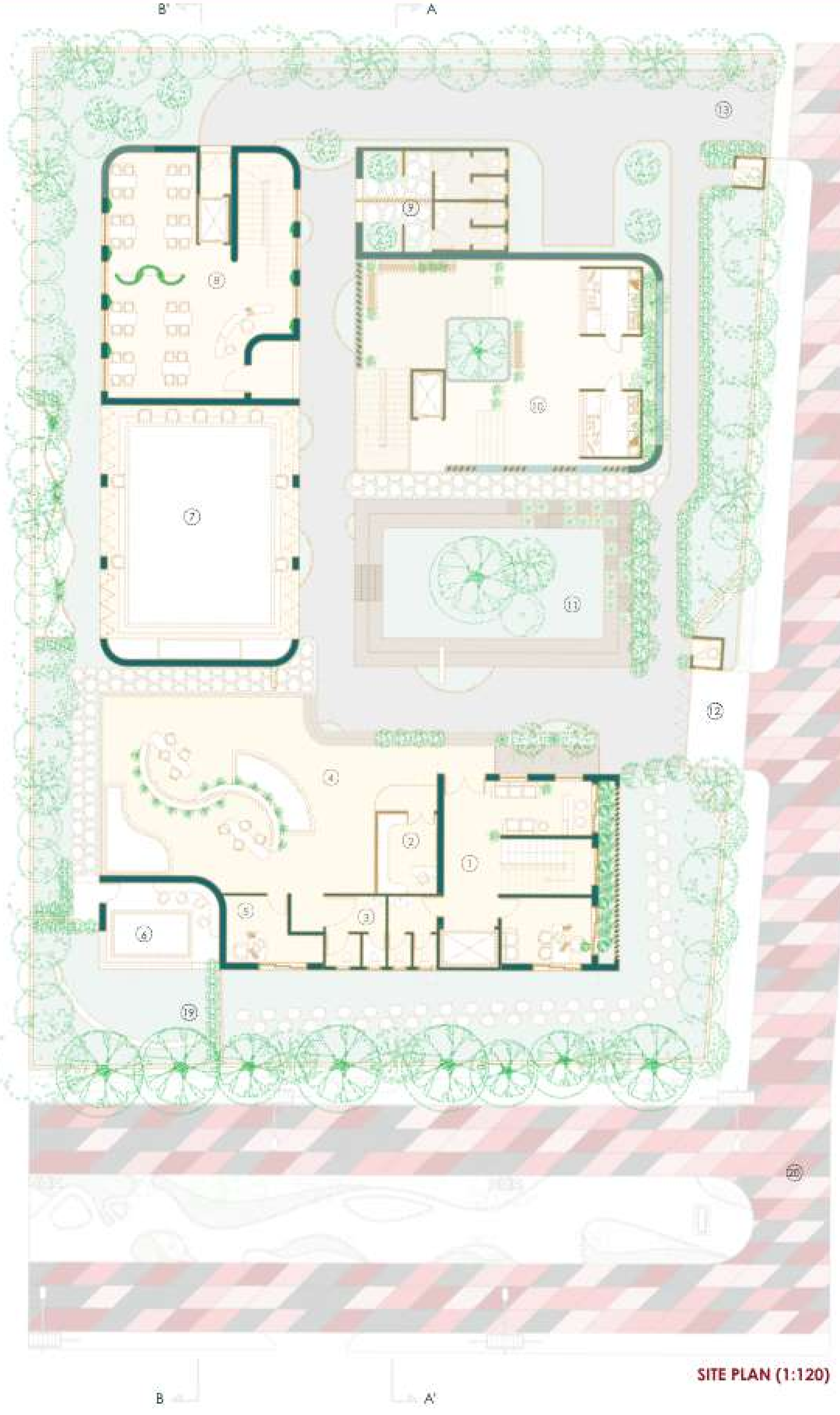


**LEGENDS**

- 1 Administration block 6.4m x 7.9m
- 2 Souvenir shop 2.6m x 3.5m
- 3 Toilet block - 1 4.8m x 3.0m
- 4 Workshop area 11.8m x 7.0m
- 5 Storage room 4.2m x 2.9m
- 6 Creche 4.9m x 3.5m
- 7 Multipurpose hall 8.0m x 11.0m
- 8 Restaurant 8.0m x 10.6m
- 9 Toilet block - 2 6.2m x 4.3m
- 10 Interpretation Centre 12.7m x 8.9m
- 11 Amphitheatre 12.0m x 7.2m
- 12 Main entry (4.2m wide)
- 13 Service entry (4.2m wide)
- 14 Staff room 3.9m x 2.8m
- 15 Sick room 2.4m x 6.4m
- 16 Kitchen and Dining area 8.4m x 10.8m
- 17 Exhibition and Screening area 12.7m x 8.9m
- 18 Toilet block - 3 6.2m x 4.3m
- 19 Existing Vegetation
- 20 Proposed street design context

**SPATIAL PLANNING**

Public and private zones are thoughtfully separated to maintain security without limiting accessibility. Flexible multipurpose spaces support training programs, exhibitions, gatherings, and performances throughout the year.



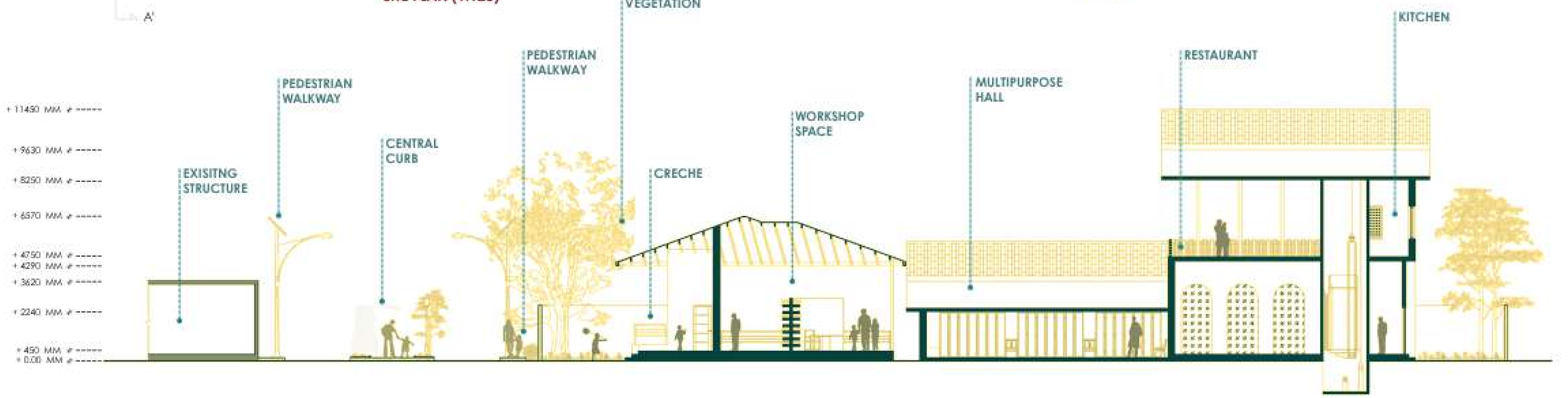
SITE PLAN (1:120)



FIRST FLOOR PLAN (1:200)



ROOF PLAN (1:200)



PROPOSED STREET DESIGN (ROAD WIDTH - 12M)

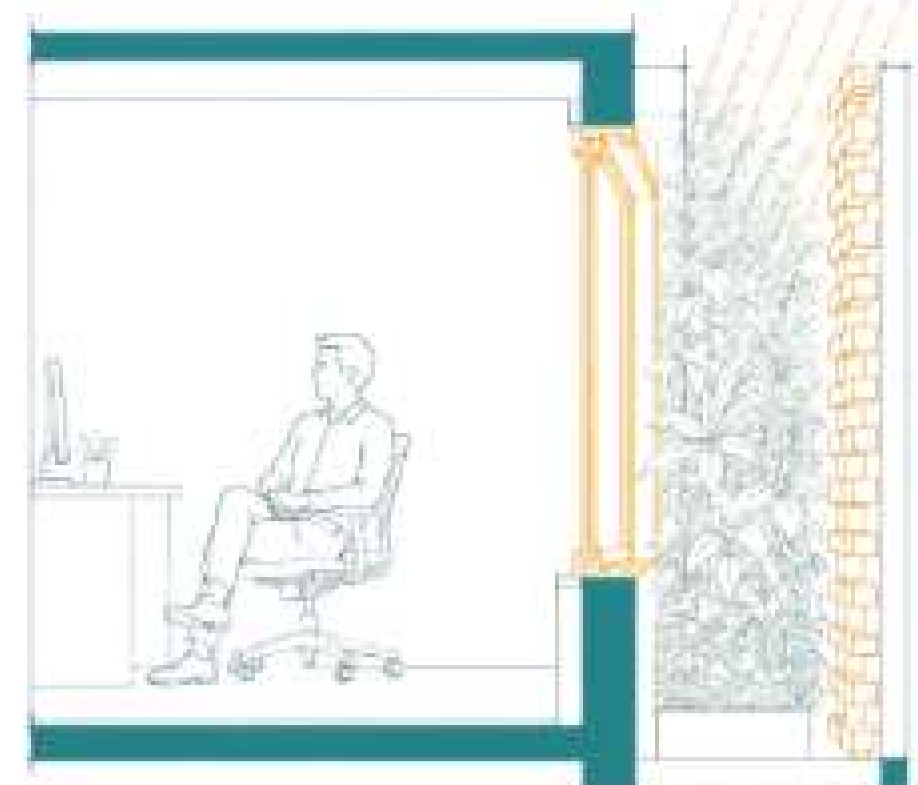
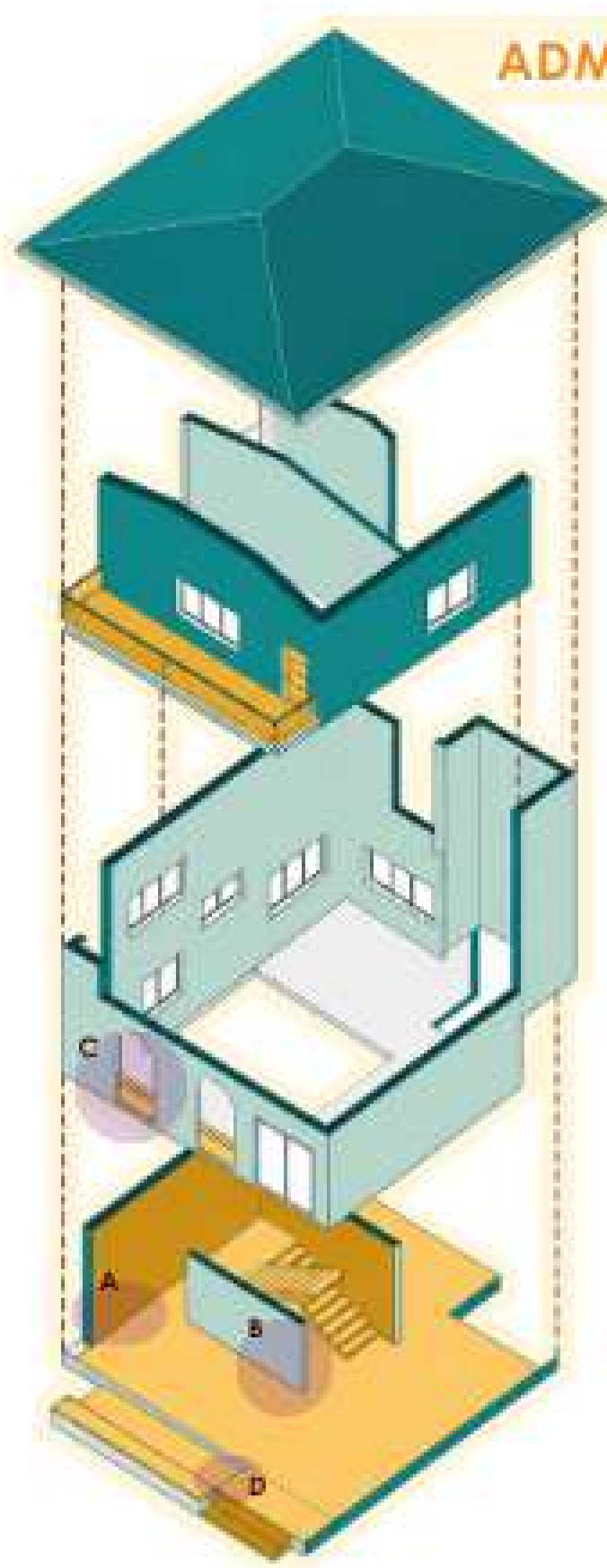
WOMEN EMPOWERMENT CENTRE

SECTION B-B' (1:100)



**अस्तित्व आकृति**  
(Resilience Shaping an Identity)  
A Women - Empowerment Center

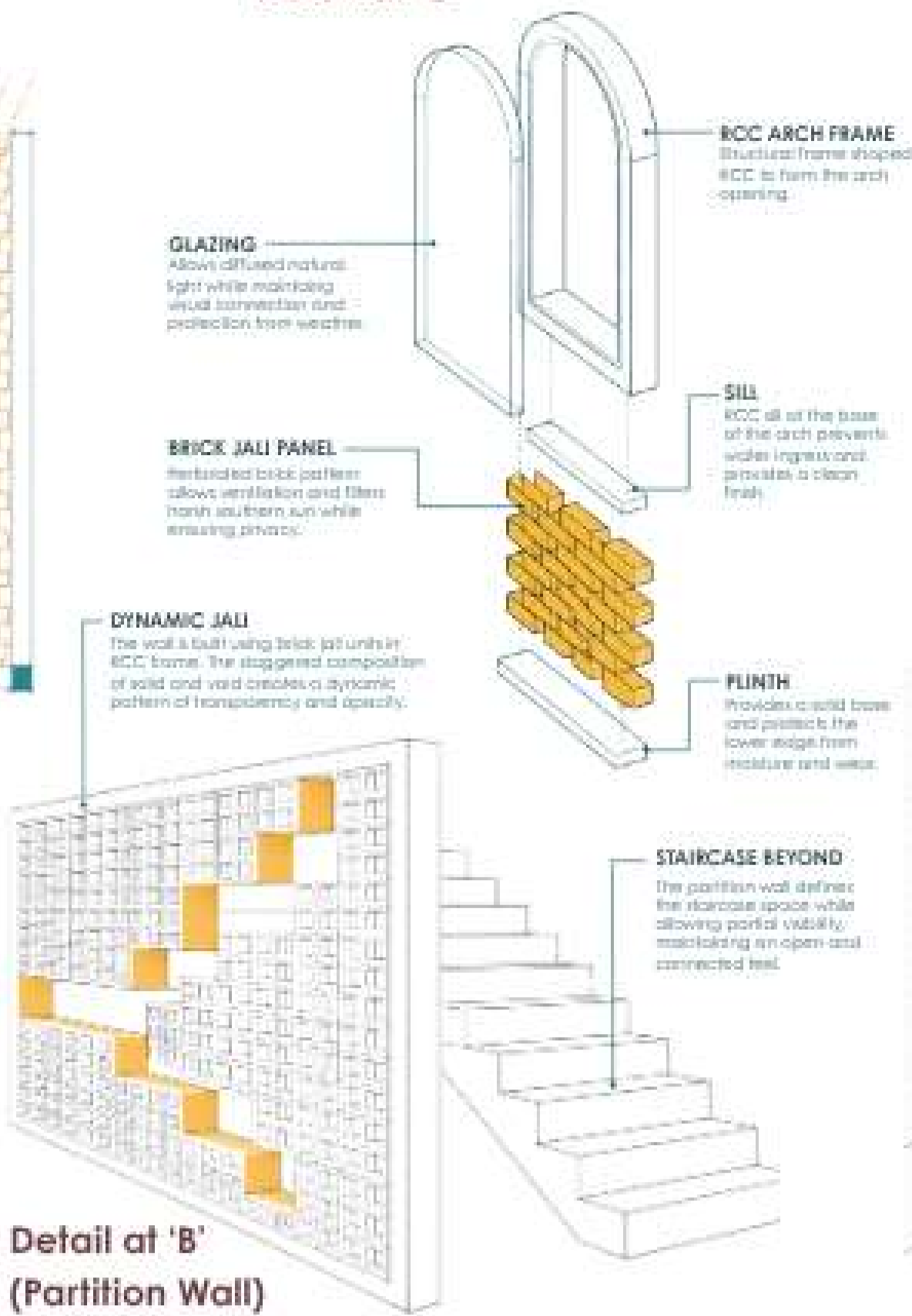
**ADMINISTRATION BLOCK**



**Detail at 'A'**

A climate-responsive facade design integrating vegetation, natural light, and passive cooling strategies. A narrow planted cavity is provided beside the window to enhance thermal comfort and improve indoor air quality. The skylight opening allows soft daylight penetration into the interior space, reducing dependence on artificial lighting. The layered green edge creates a visual connection with nature while maintaining privacy. Also the jali wall is on the southern side cutting of the harsh sun, filtering heat and allowing controlled ventilation and diffused daylight into the workspace.

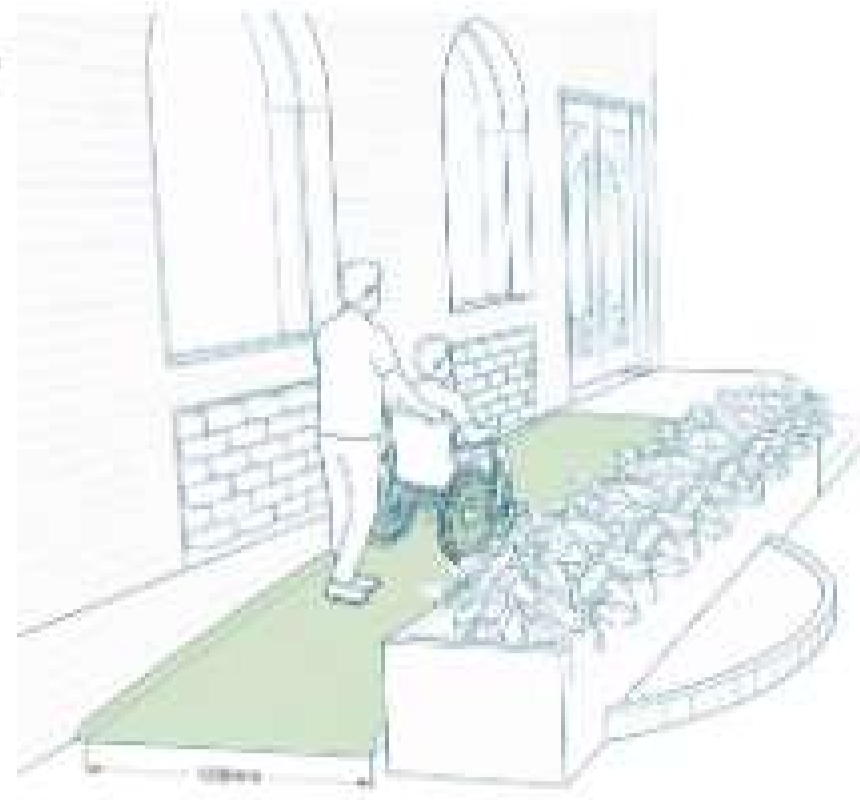
**Detail at 'C'**



**Detail at 'B' (Partition Wall)**

Universal accessibility features to ensure comfortable and barrier-free movement for all users. A 1200 mm wide ramp is provided at the entrance for wheelchair access, allowing smooth circulation between outdoor and indoor spaces. The gradual slope, level transition, and clear pathway improve mobility and safety for differently-abled users, elderly individuals, and children. The accessible route is thoughtfully integrated within the landscape design, creating an inclusive, user-friendly, and welcoming environment while maintaining the architectural aesthetics of the space.

**Detail at 'D' (Ramp)**



**Detail at 'E' (Toilet)**



**CURVED GREEN WALL**  
Smooth curved form softens the space and enhances visual flow

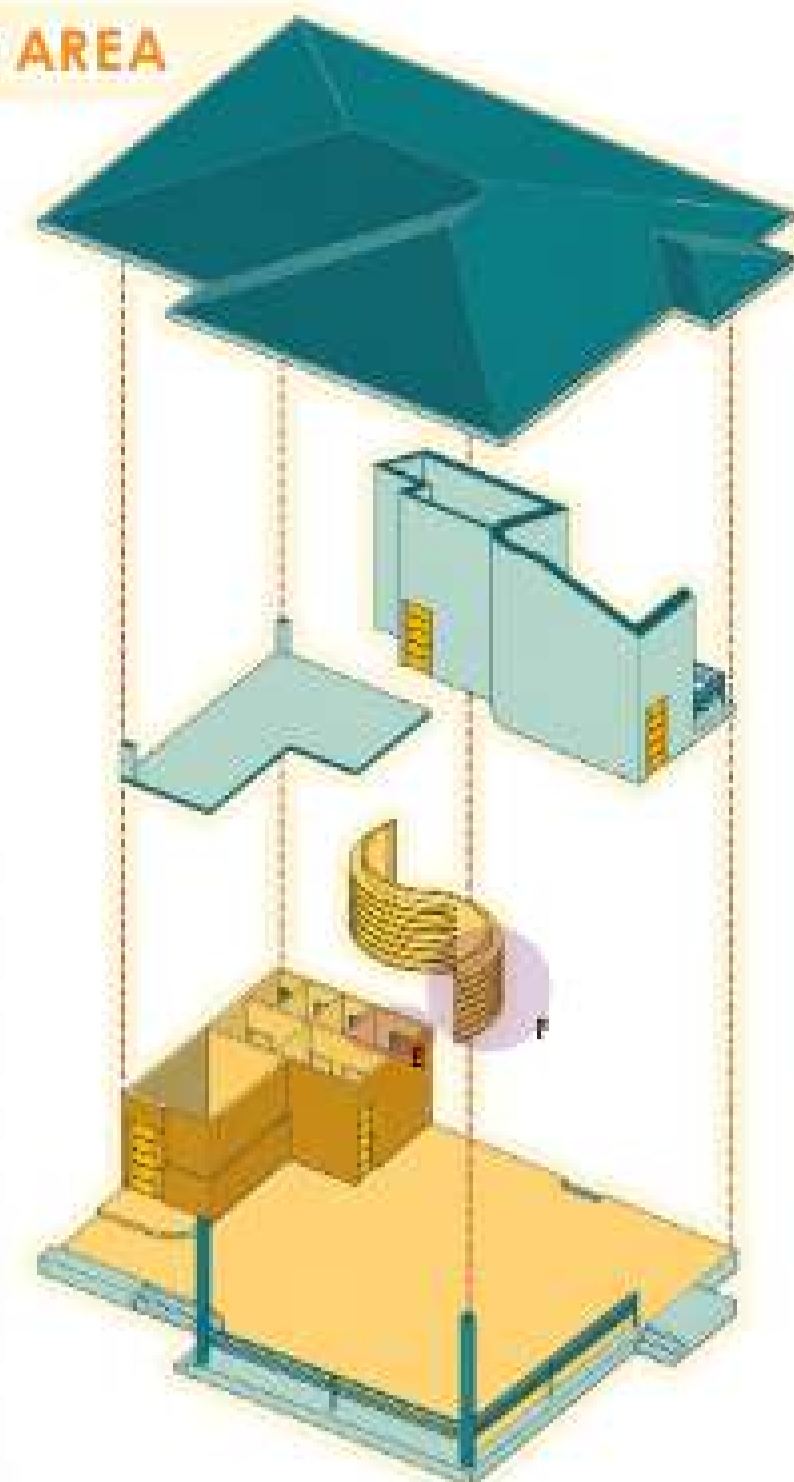
**PLANTER LAYERS**  
Horizontal planters act as a natural cooling system

**GREEN BUFFER**  
Plants absorb heat, filter dust and improve air quality

**HARD SURFACE + GREEN**  
Combination of solid concrete and greenery ensures durability and low maintenance

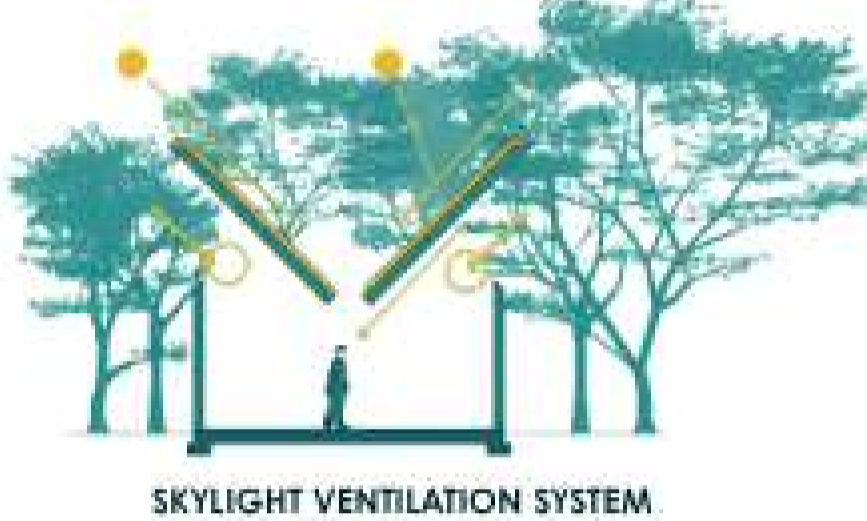
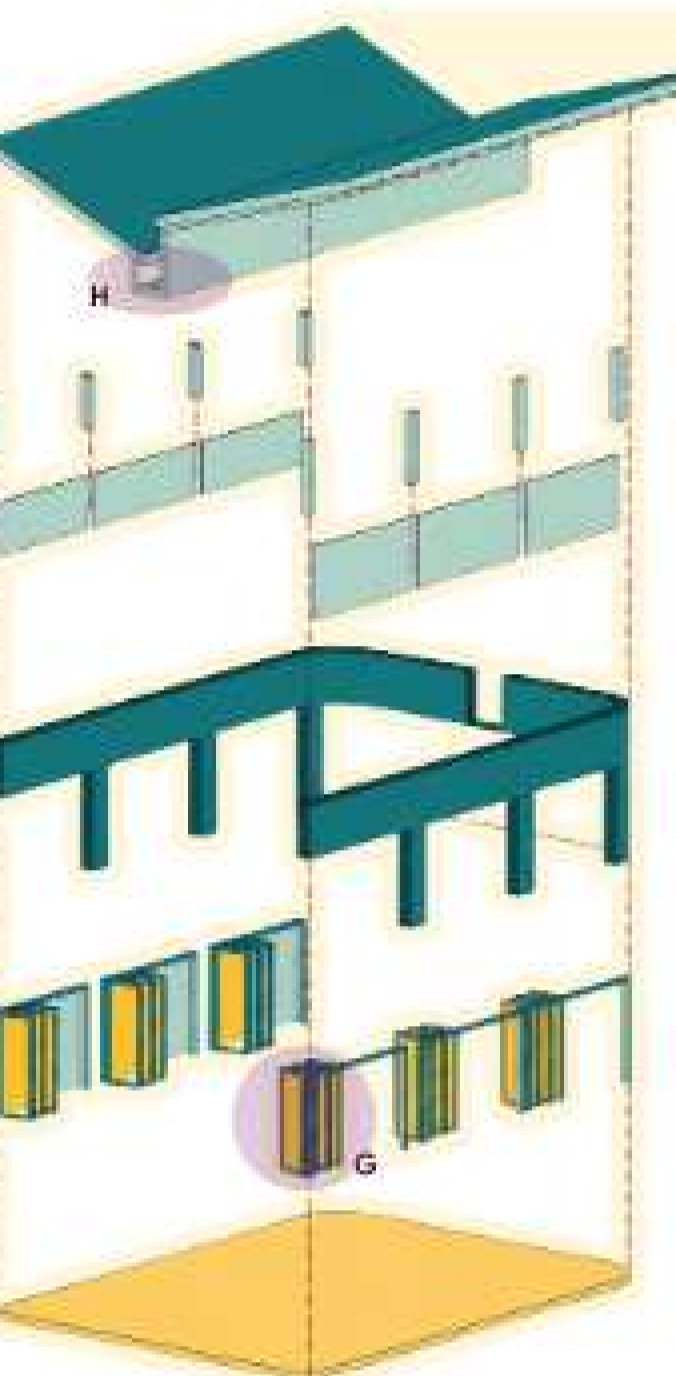
**WORKSHOP AREA**

The universally accessible toilet is designed to provide safe, comfortable, and barrier-free use for all individuals. A 1500 mm turning radius ensures wheelchair maneuverability, while the 1000 mm clear door opening improves accessibility. Grab bars, clear circulation space, and user-friendly fixtures support independent movement, safety, dignity, and inclusive design within the built environment.

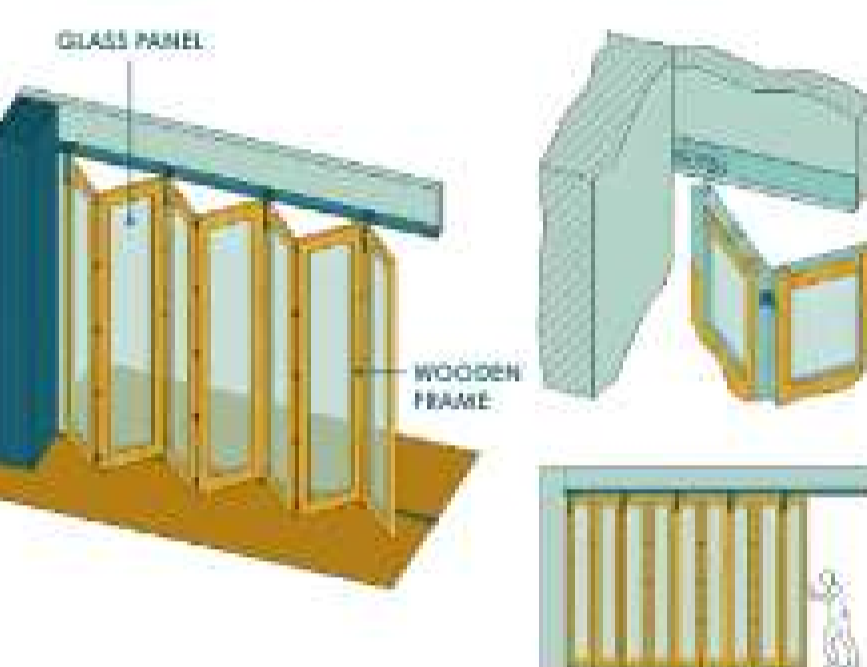


**Detail at 'F' (Eco-coolant)**

**MULTIPURPOSE HALL**



**SKYLIGHT VENTILATION SYSTEM**



**Detail at 'G' (Bi-Folding Glass Door)**



**Detail at 'H' (Butterfly roof)**

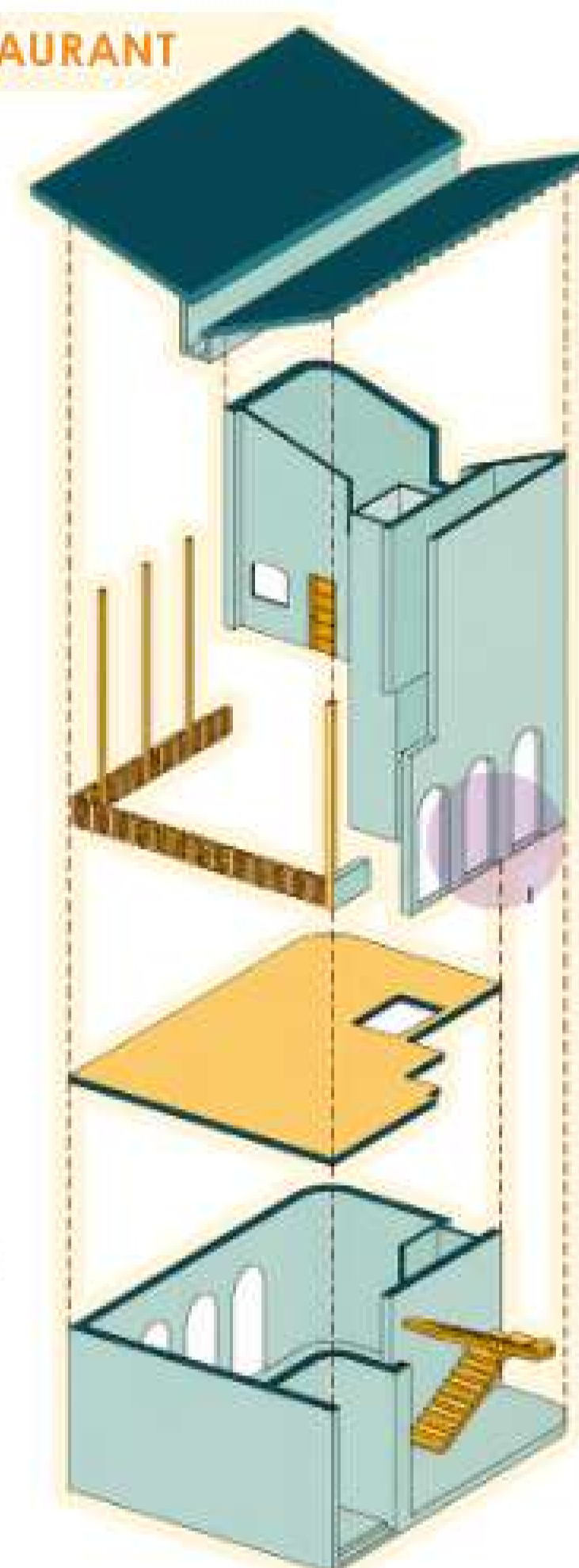
The multipurpose hall functions as a community gathering space for Devi idol puja celebrations, cultural events, weddings, birthdays, and women skill-development activities during the off-season. The spill-out seating edge encourages informal interaction, dining, relaxation, and flexible community use, creating an active and socially engaging environment.



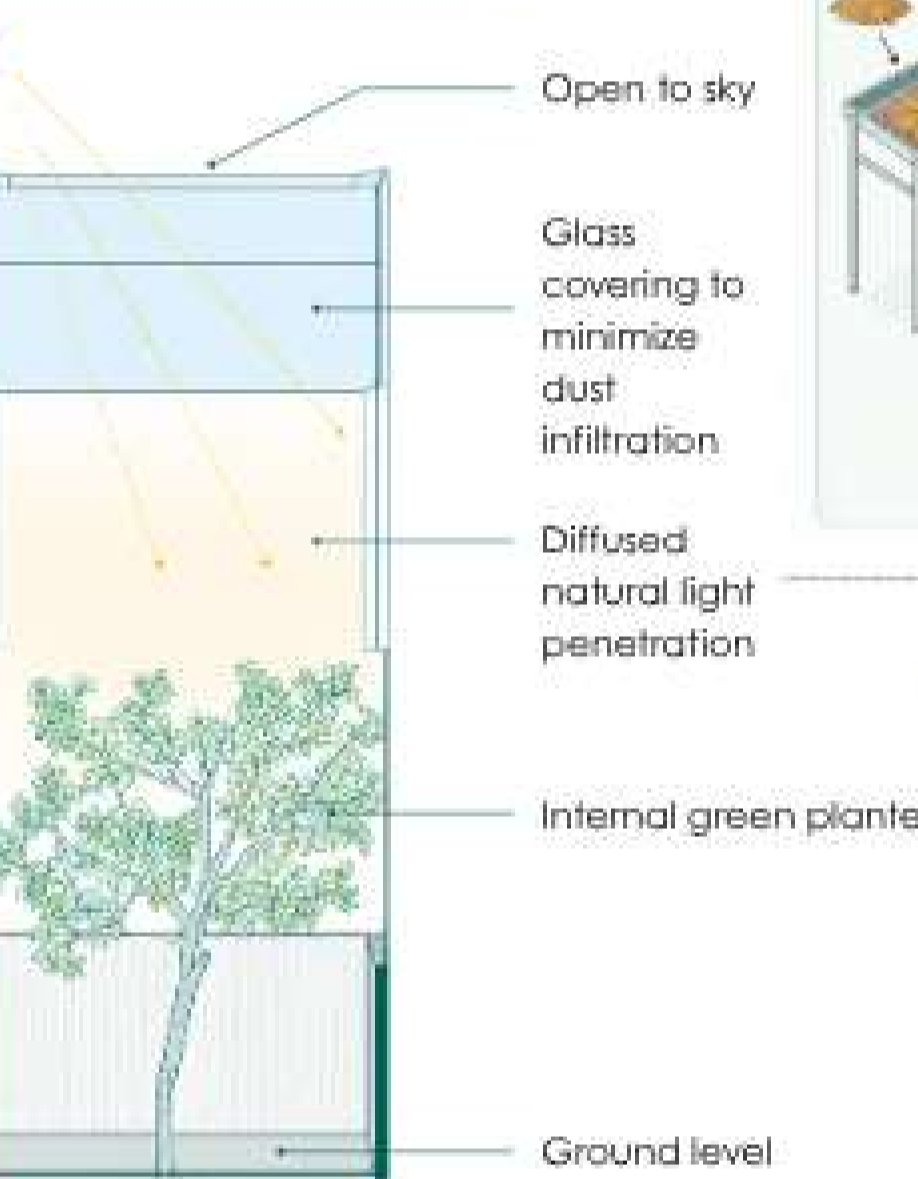
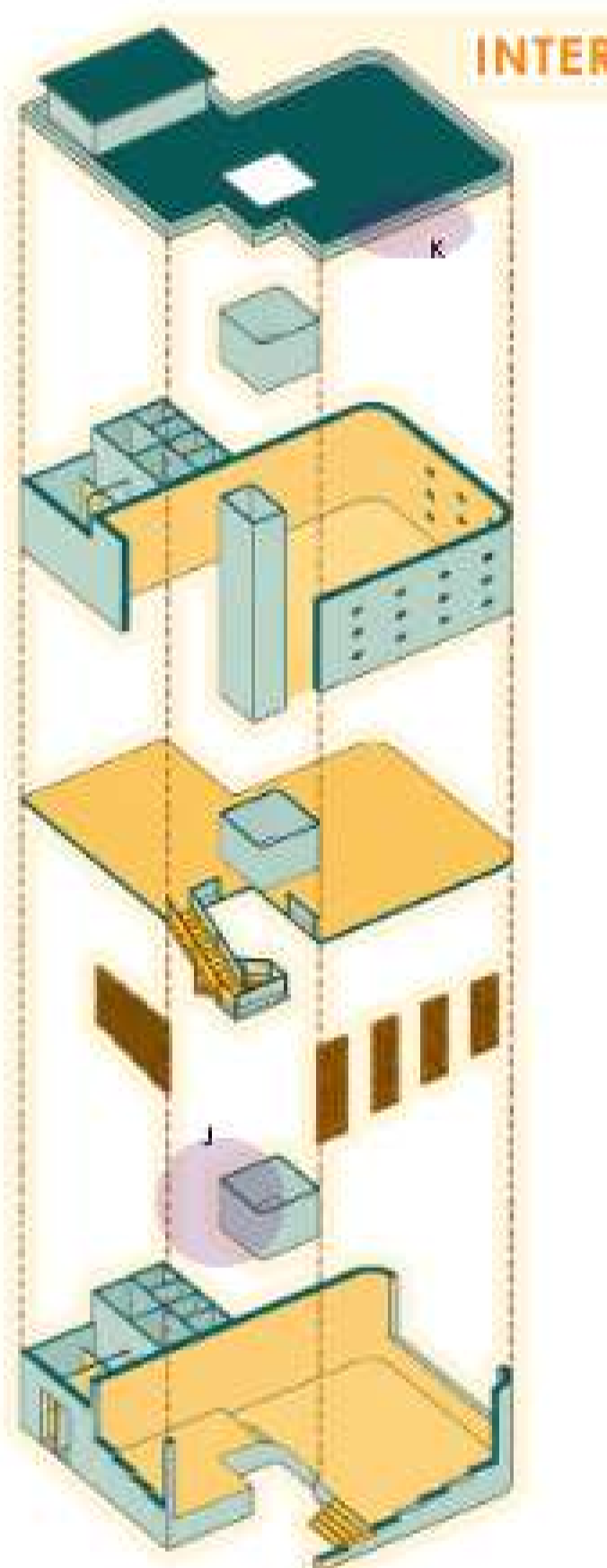
**Detail at 'I'**

This view highlights the transition between built form and landscape through a series of elegant arches that create depth, rhythm, and visual continuity along the pathway. Soft greenscape elements and linear vegetation enhance the pedestrian experience while introducing shade, texture, and natural cooling. The partially visible staircase behind the arches adds spatial curiosity and layered visual connectivity within the structure. The landscaped pathway encourage interaction, pause, and movement, creating a calm, welcoming, and climate-responsive architectural environment integrated with nature.

**RESTAURANT**



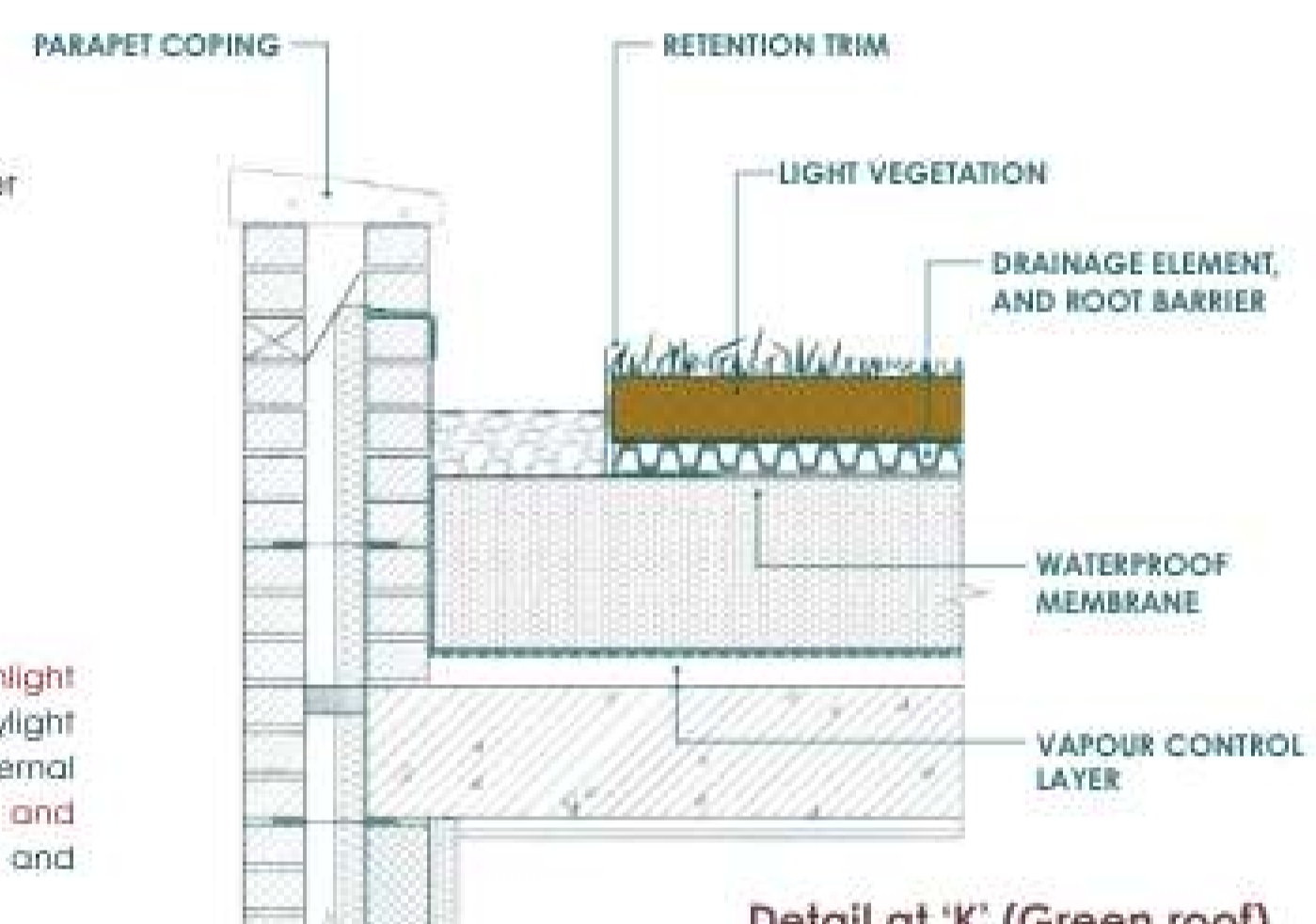
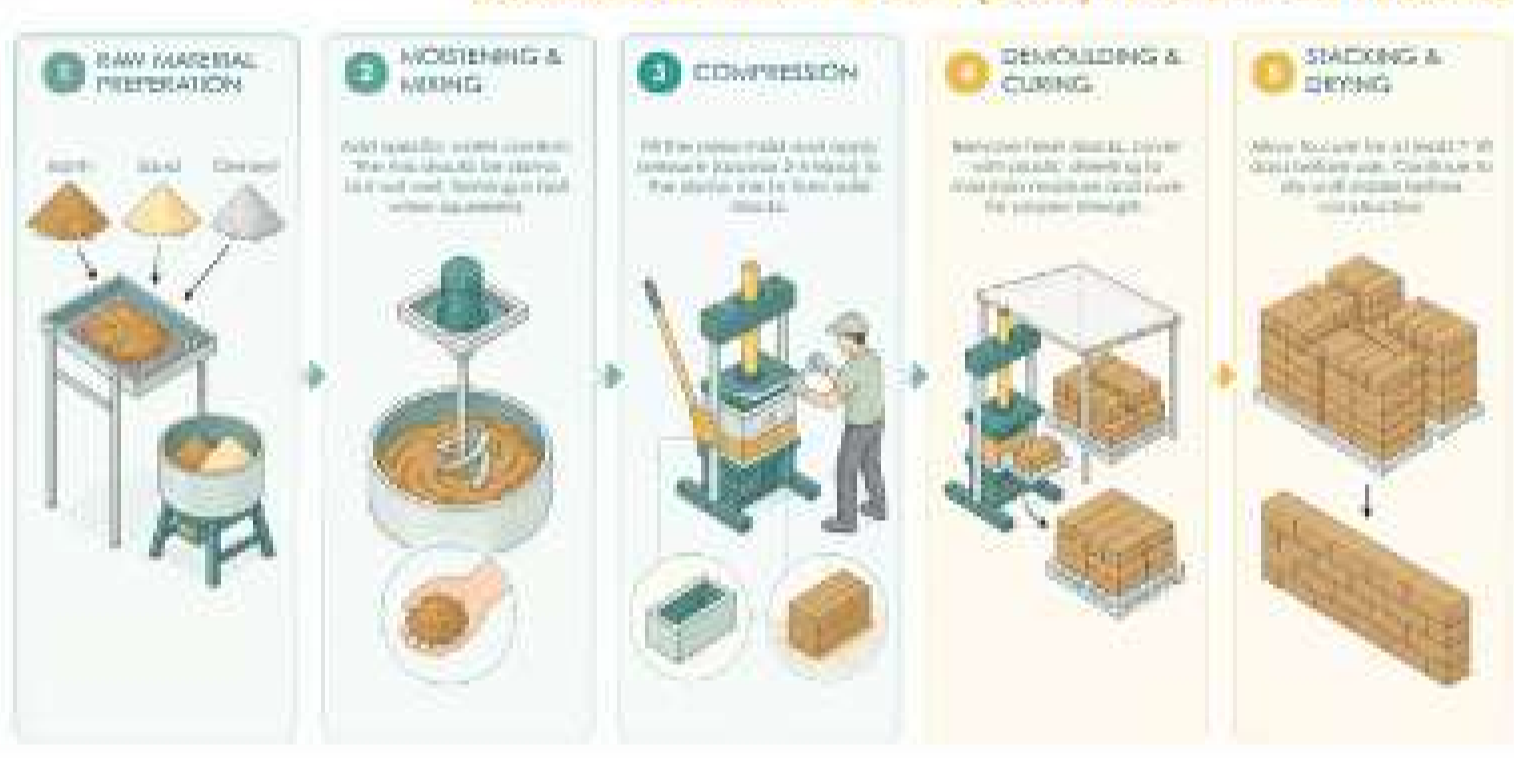
**INTERPRETATION CENTRE**



**Detail at 'J'**

A climate-responsive courtyard that allows natural sunlight and ventilation into the partially open spaces. The skylight opening enhances daylight penetration, while the internal vegetation improves thermal comfort, airflow, and microclimate conditions, creating a naturally lit and environmentally responsive spatial experience.

**COMPRESSED EARTH BLOCK (CEB) PRODUCTION PROCESS**



**Detail at 'K' (Green roof)**

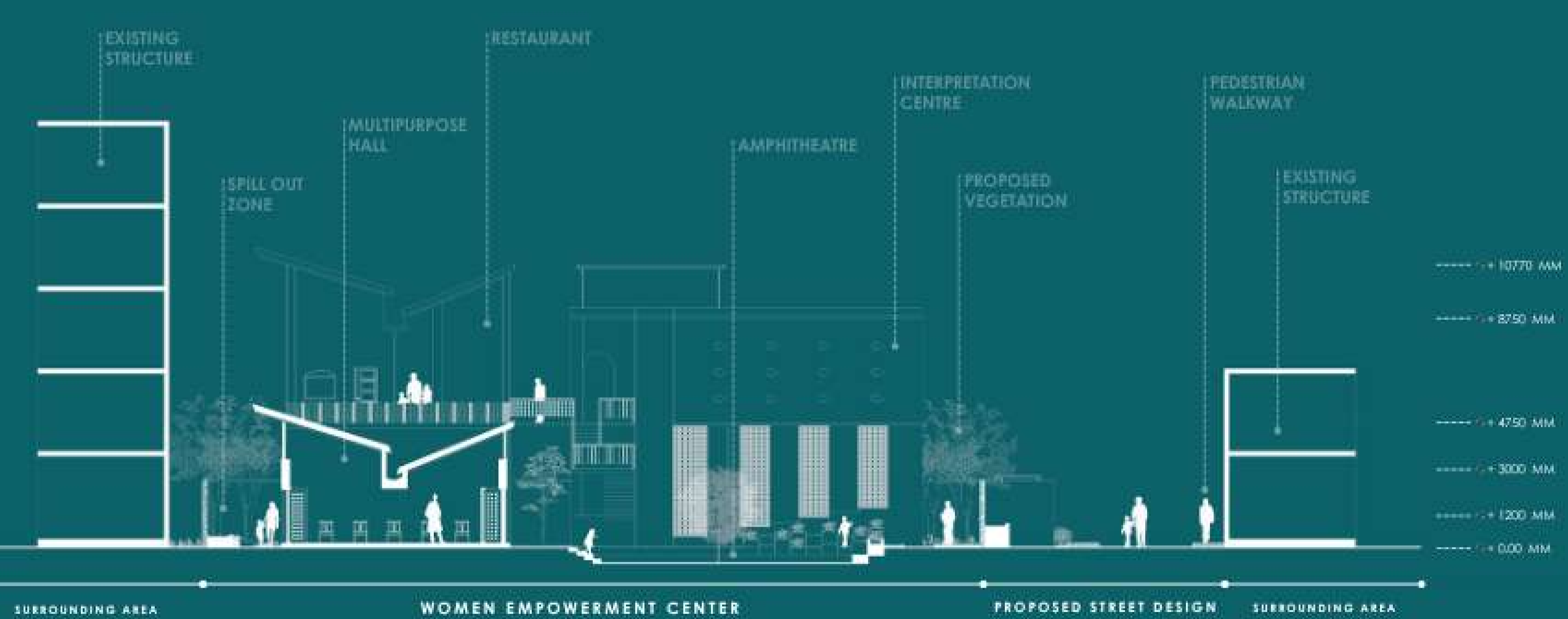
Primary Movement  
Secondary Movement



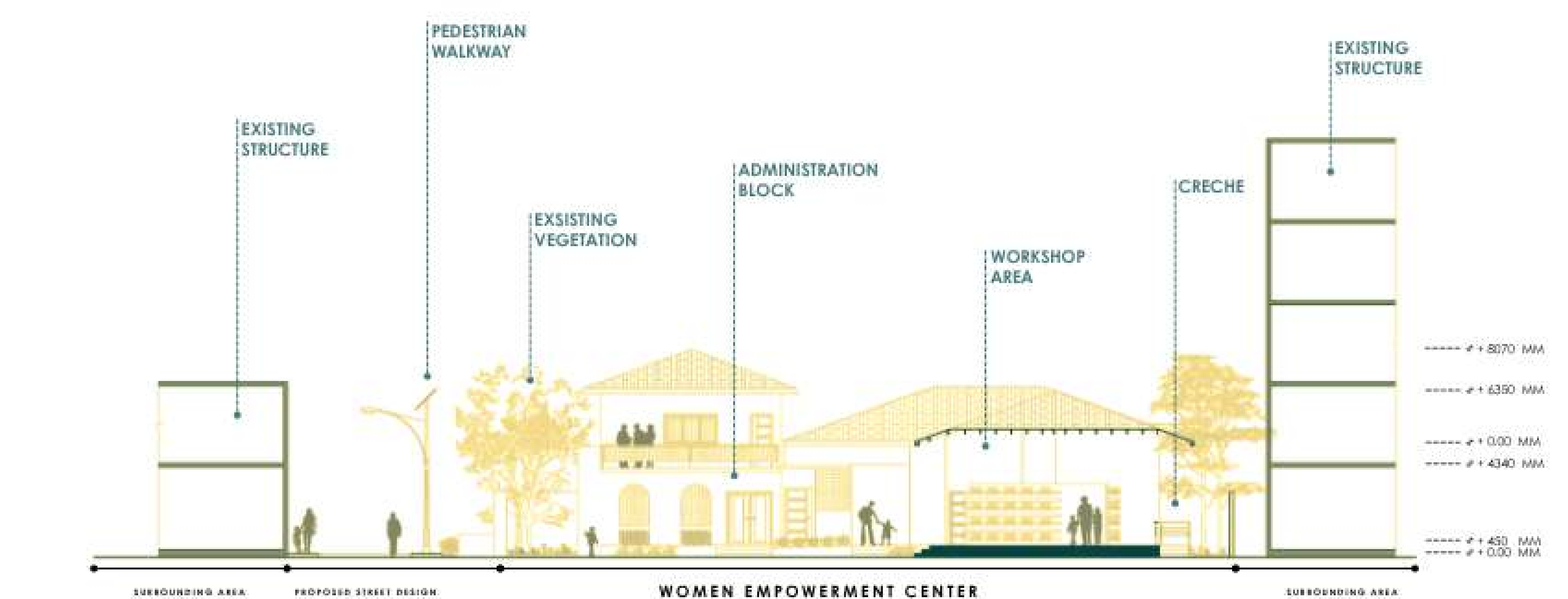
**CIRCULATION THROUGH OUT THE SITE**

The circulation diagram shows the movement pattern through out the site. Primary circulation connects major activity spaces and entrances, while secondary circulation links supporting areas. The layout ensures smooth, easy, and accessible movement for users, creating clear navigation, better connectivity, and interactive spatial flow across the site.

**LANDSCAPE DETAILS**

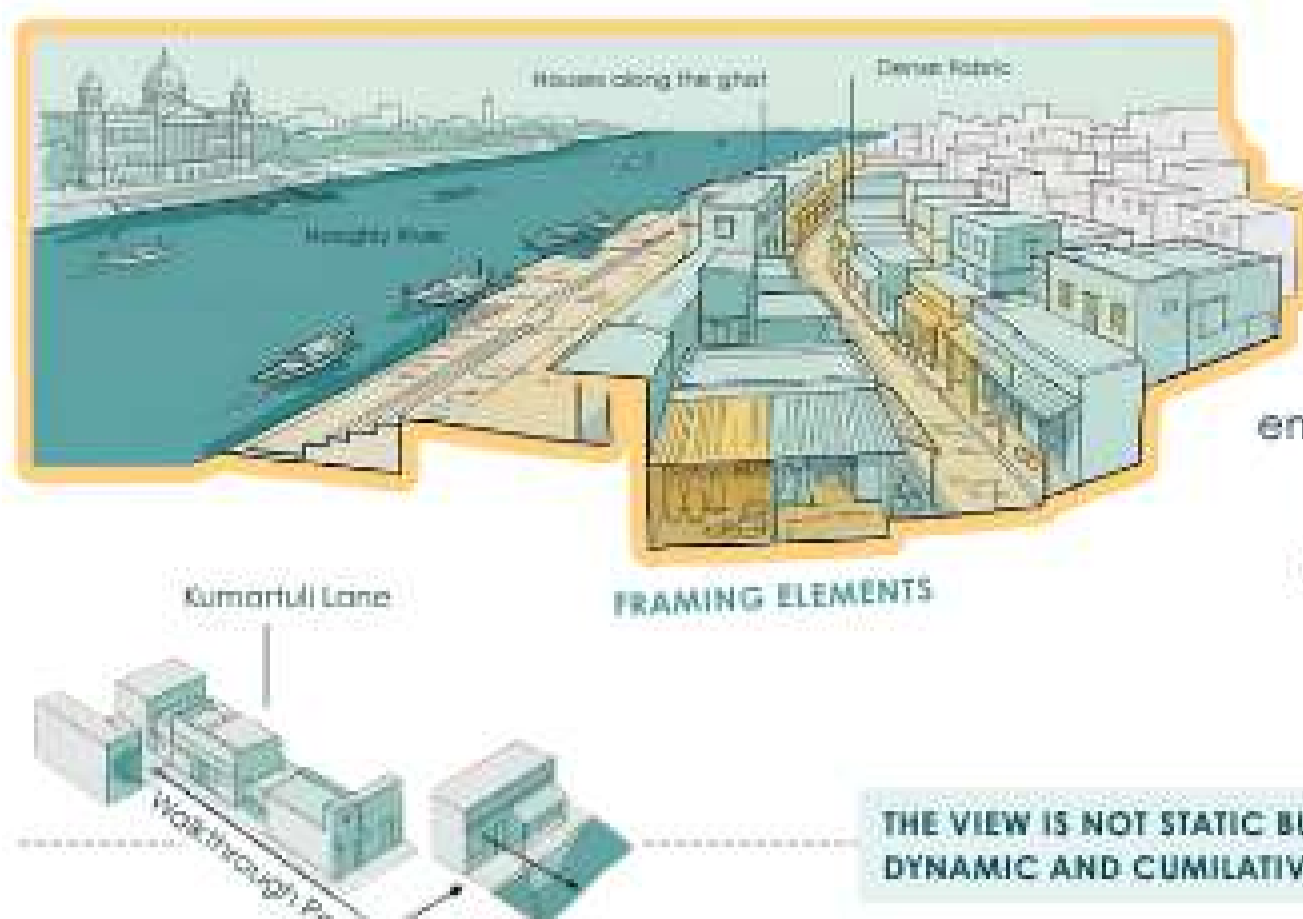


**SECTION C-C' (1:100)**



**SECTION D-D' (1:100)**

# 01 URBAN THEORY



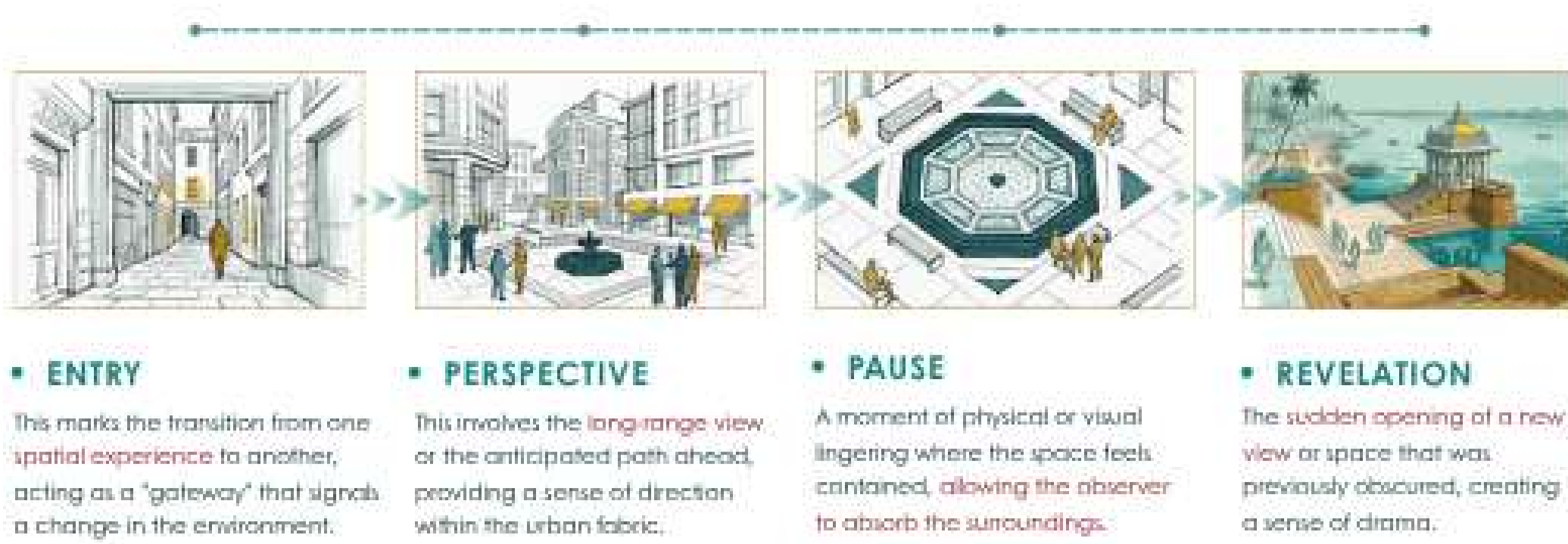
## SERIAL VISION THEORY

Serial Vision Theory by Colin Rowe proposes that urban experience unfolds as a sequence of events through moving perspectives. It emphasizes framed views, reveal and conceal, rhythm and anticipation, creating a rich memorable journey through space.

THE VIEW IS NOT STATIC BUT DYNAMIC AND CUMULATIVE

## A JOURNEY THROUGH URBAN SPACES

Mapping the sequence of experience in four stages



## PROBLEM STATEMENT & OUR SOLUTION

### PROBLEM

- Unorganized street vending
- Lack of pedestrian priority
- Poor Landscape & seating
- Inadequate drop off zones
- Lack of Public amenities
- Illegal railway crossing
- Disconnected public realm

### OUR SOLUTION

- Pedestrian first street design
- Organized vending modules
- Shaded seating & rest areas
- Dedicated drop off & cycle stand
- Sustainable drainage system
- Public toilets & amenities
- Green, inclusive & vibrant design

## TRAFFIC ANALYSIS



### LEGENDS

- Two-way road
- One-way road
- Nodes
- Safer pedestrian movement throughout the day
- Reduces vehicular congestion and conflicts
- Supports local vendors and artisans helping the community
- Creates vibrant and active public realm

### WHY TRAFFIC ANALYSIS?

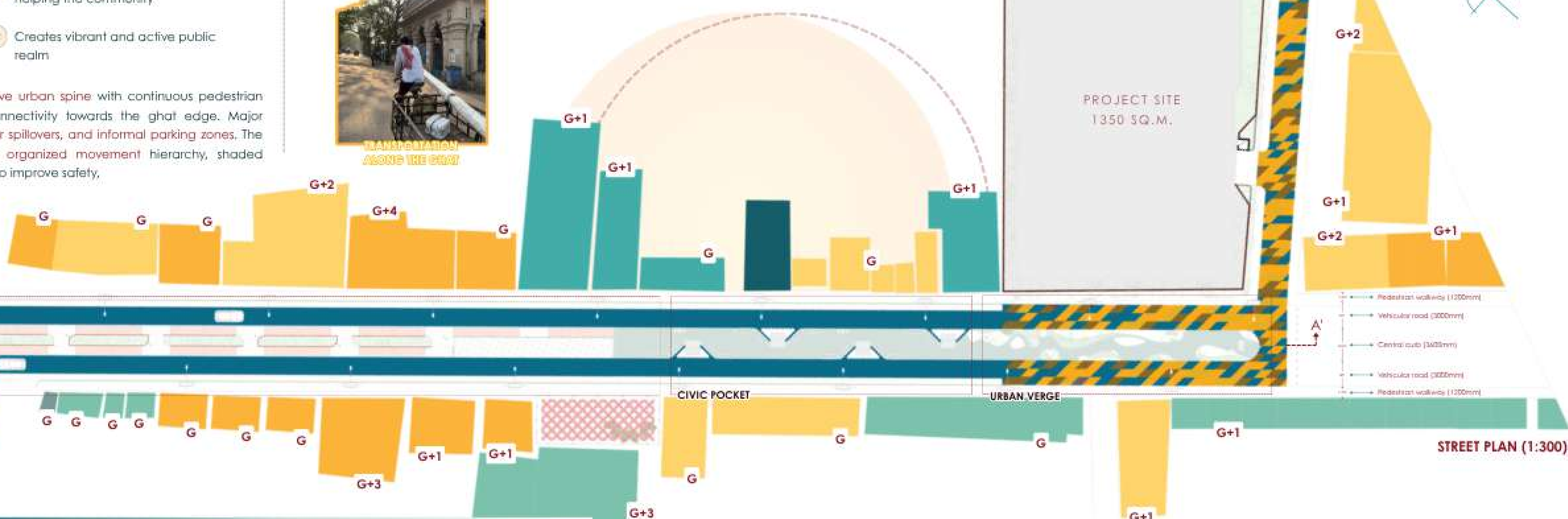
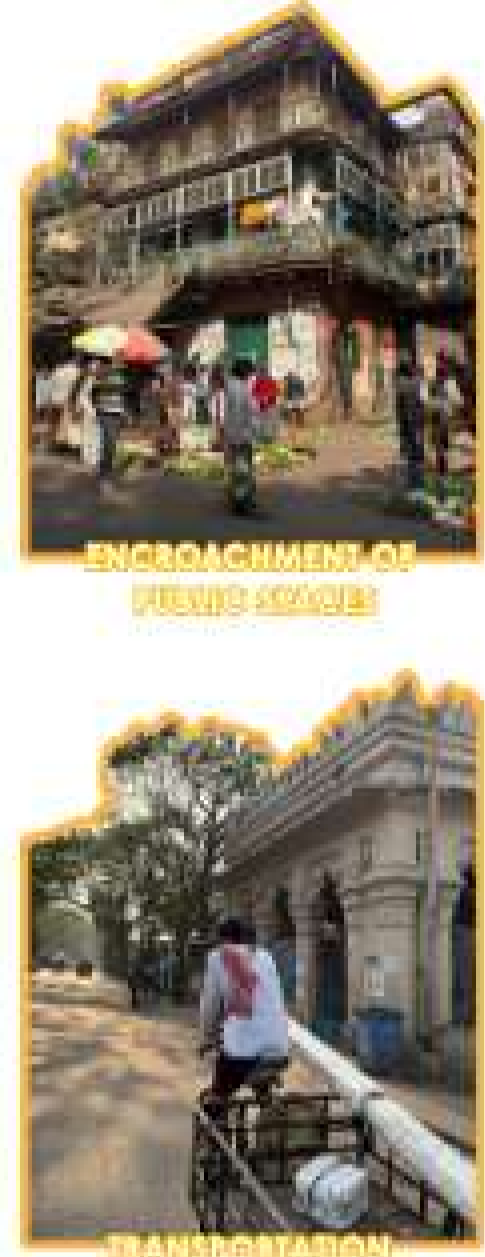
The traffic analysis highlights Sova Bazar Street as a highly active urban spine with continuous pedestrian movement, mixed vehicular circulation, and strong visual connectivity towards the ghat edge. Major congestion points occur near junctions, railway crossings, vendor spillovers, and informal parking zones. The proposed intervention introduces a pedestrian-priority street, organized movement hierarchy, shaded walkways, dedicated drop-off pockets, and active public edges to improve safety, accessibility, and the overall experiential quality of the street corridor while enhancing urban connectivity and public interaction.

## CONTEXTUAL ANALYSIS

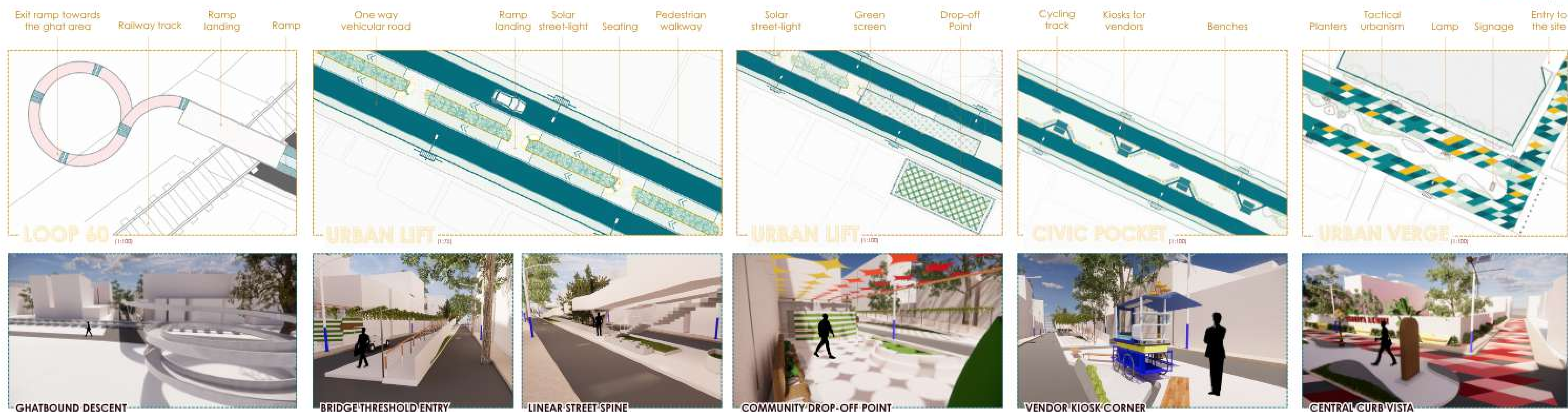
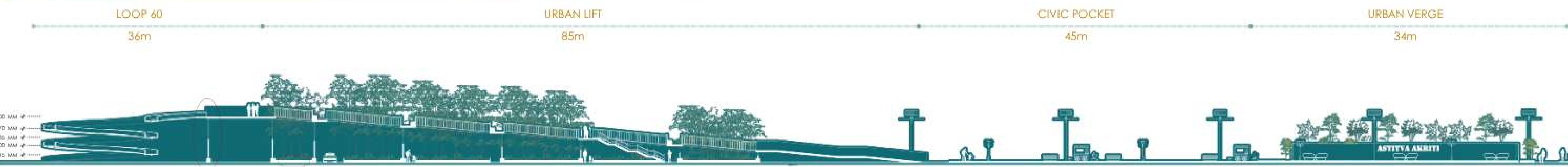
The proposed street intervention responds to the dense urban fabric of Kumartuli by strengthening pedestrian movement, visual connectivity, and public interaction. The surrounding context includes mixed-use buildings, artisan workshops, religious landmarks, and active commercial edges generating continuous movement throughout the day. The design enhances accessibility towards the ghat, improves street safety, introduces shaded pause spaces, and creates a sequential urban experience inspired by Serial Vision Theory, while preserving the cultural identity and everyday activities of the locality.

## LEGENDS

- Residential Building
- Commercial Building
- Industrial Building
- Religious Building
- Mix-used Building
- Open Space/ Park



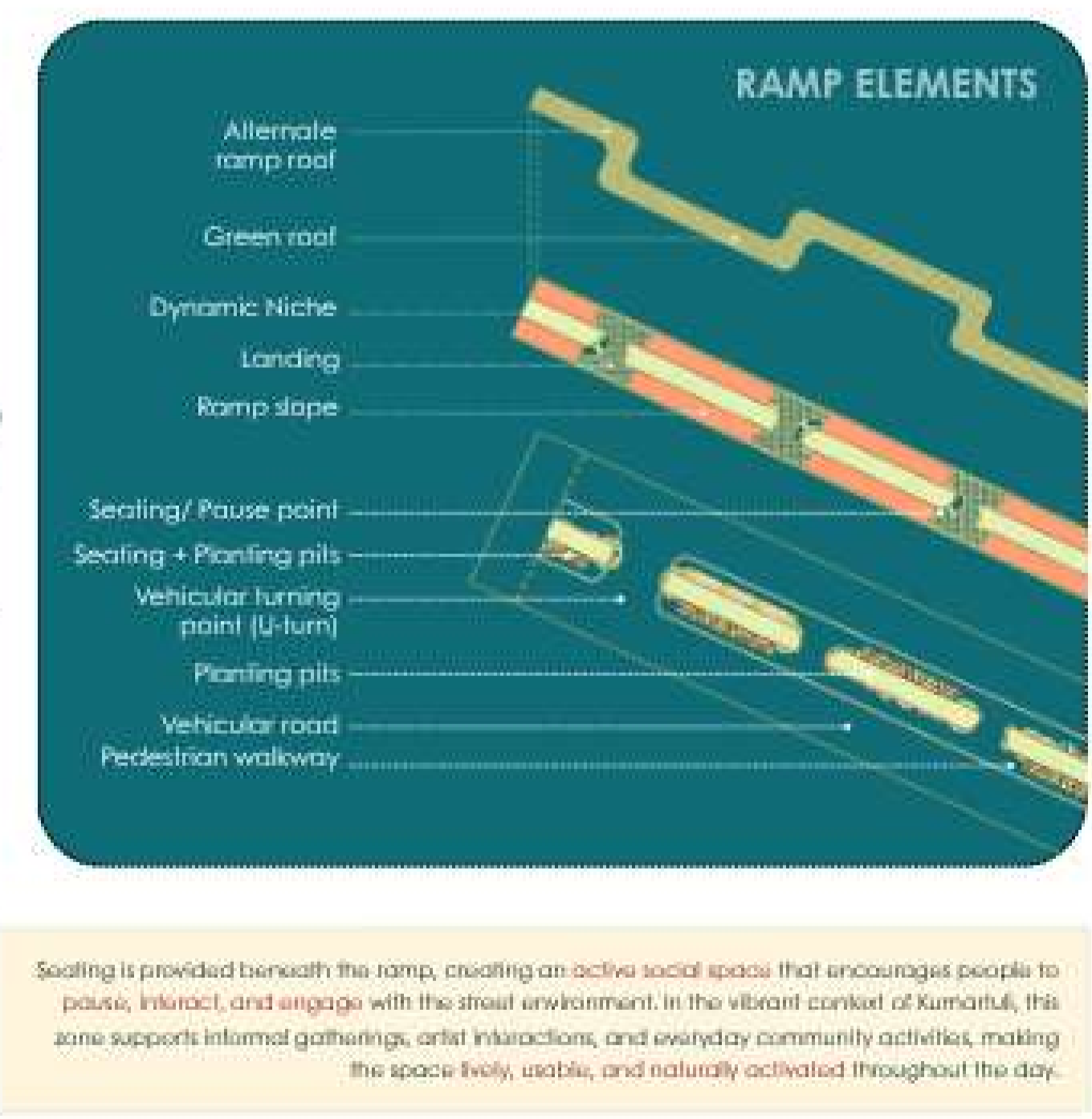
# 06 STREET DESIGN DETAILS



## PLANTING PLAN DETAILS



## DROP-OFF POINT DETAILS



## STREET DESIGN ELEMENTS 04





The proposed Women Empowerment Centre integrates seamlessly with the urban intervention, creating an **active public realm** that strengthens community interaction, pedestrian connectivity, and cultural identity within Kumartuli. The project transforms the streetscape into a **vibrant, inclusive environment** where architecture, public spaces, and everyday social activities collectively **foster safety, accessibility, and women-led community engagement**.



**1** Tactical urbanism entry guiding visitors towards women empowerment centre  
**2** Active food street enhancing lively neighborhood social interactions  
**3** Community encouraging movement, leisure, and everyday gathering  
**4** Public interface spine activating interaction, circulation, recreation, and socialization



**4** Illuminated seating edge activating safe and engaging public realm  
**5** Linear green buffer creating calm pedestrian interaction corridor  
**6** Welcoming drop-off zone supporting accessible and active movement  
**7** Dynamic shared street promoting playful and inclusive urban experience

### UNIVERSALLY ACCESSIBLE TOILET

Integrated into the drop-off point, this universally accessible modular washroom features rounded geometry and clear zoning, ensuring inclusive, low-maintenance, and effortless navigation for residents and people.

### ELECTRICAL BICYCLE STAND

Pedestrian-friendly electric-bicycle stand designed near the drop-off zone to encourage sustainable mobility, improve user convenience, and create an active, interactive public edge enhancing the overall streetscape experience near the site.

### PEDESTRIAN-ORIENTED FEATURES

#### Decorative street lighting

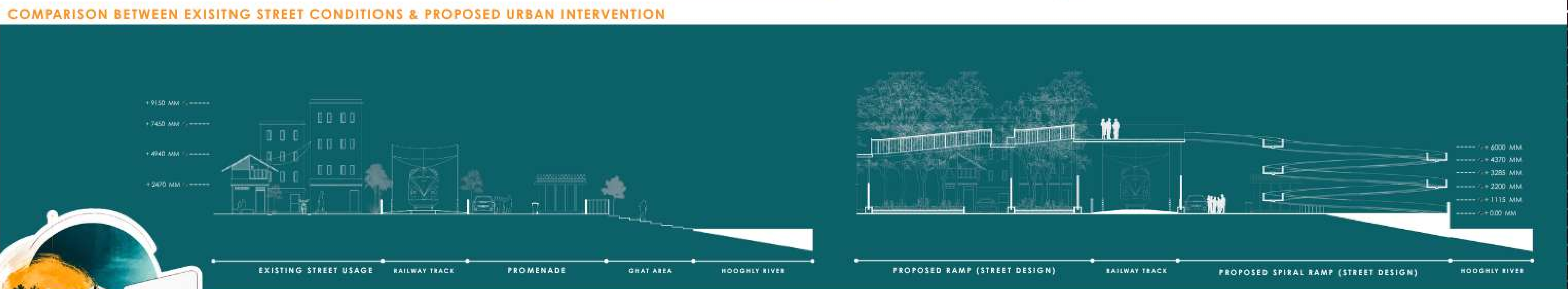
Decorative street lighting element placed along the central curb to improve nighttime visibility, enhance pedestrian safety, and create a vibrant, welcoming public environment supporting active street movement and interaction.

#### SEATING SPACE INTEGRATED WITH GREENSCAPE

Transforming a potential dead space beneath the ramp, this dynamic, hexagonal seating area seamlessly integrates vibrant greenscapes with functional resting spots, creating a lively, micro-climate urban pocket for relaxation.

#### Vendor's Edge

Raised vendor platform providing safe seating, functional spill-out space, and protective separation from moving traffic. Positioned along the central curb, it enhances comfort, visibility, accessibility, and everyday street vending activity.



PHYSICAL MODEL PHOTOS



अस्तित्व  
आकृती  
(Resilience Shaping an Identity)  
A Women - Empowerment Center

Physical model illustrating the proposed urban intervention with surrounding site context, depicting existing building massing and the Women Empowerment Centre massing proposal.