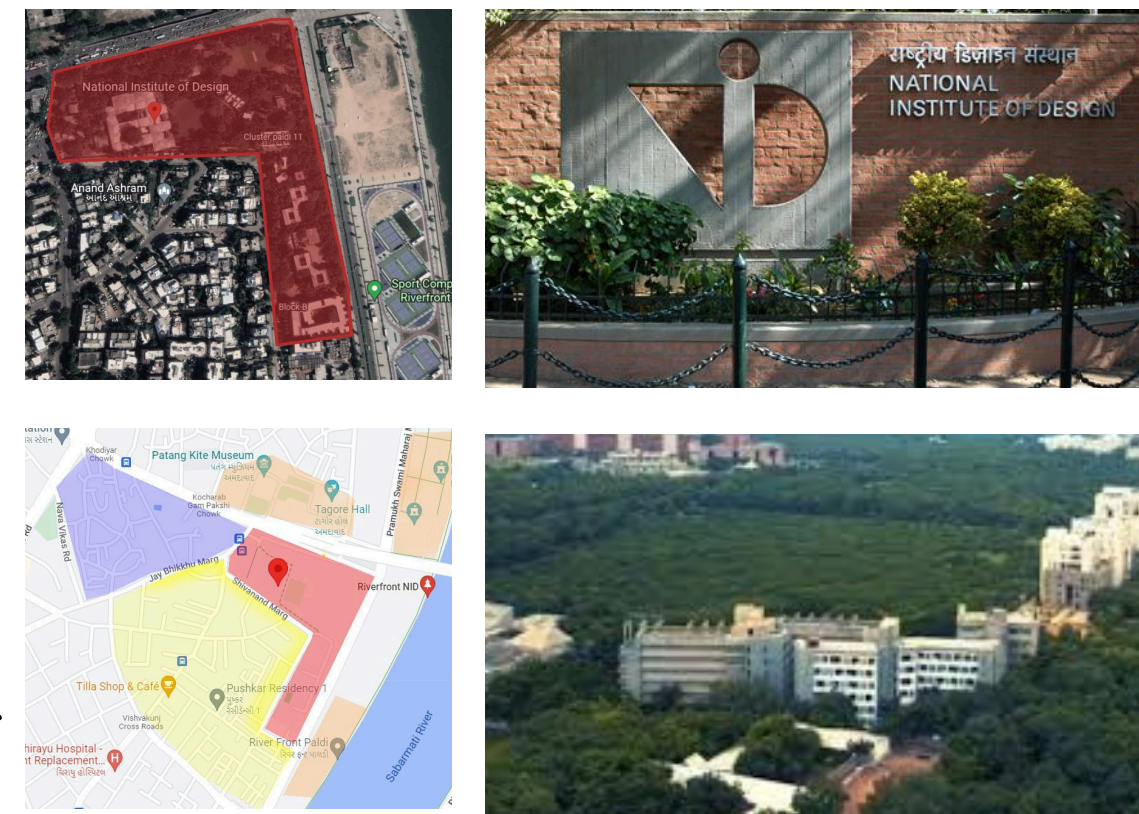


NATIONAL INSTITUTE OF DESIGN

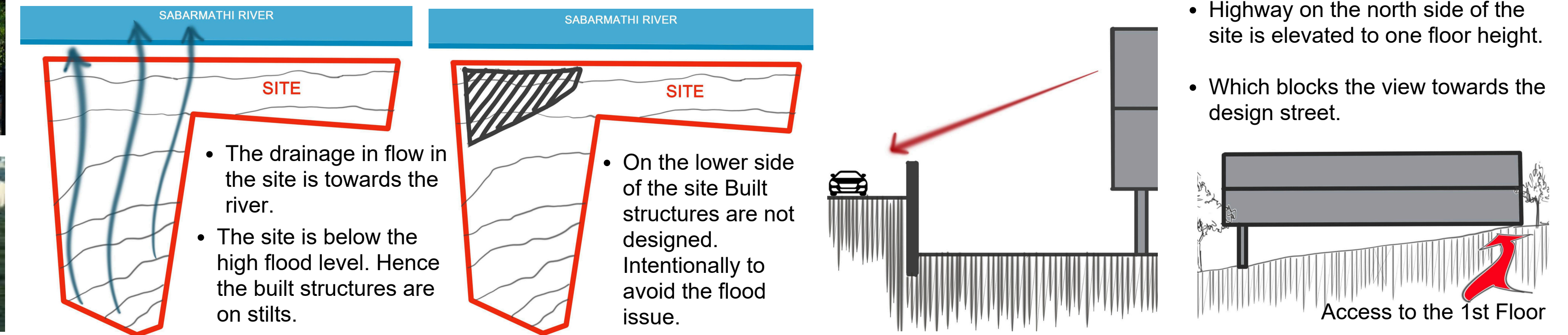
LOCATION : Gandhinagar, Gujarat, India
 ARCHITECT : Giraben Sarabhai & Charles Eames
 BUILDING TYPE : Design Education / Research Institution
 SITE AREA : 20 acres

INTRODUCTION

- NID is a design school in Paldi, Ahmedabad, Gujarat
- Area of the site: 20 acres approx.
- The site is located along the Sabarmati River.
- In its surrounding is the Tagore hall, the kite museum and opposite to the site is Diwan Ballabhai high school.
- Main Access of the site is from the main road.

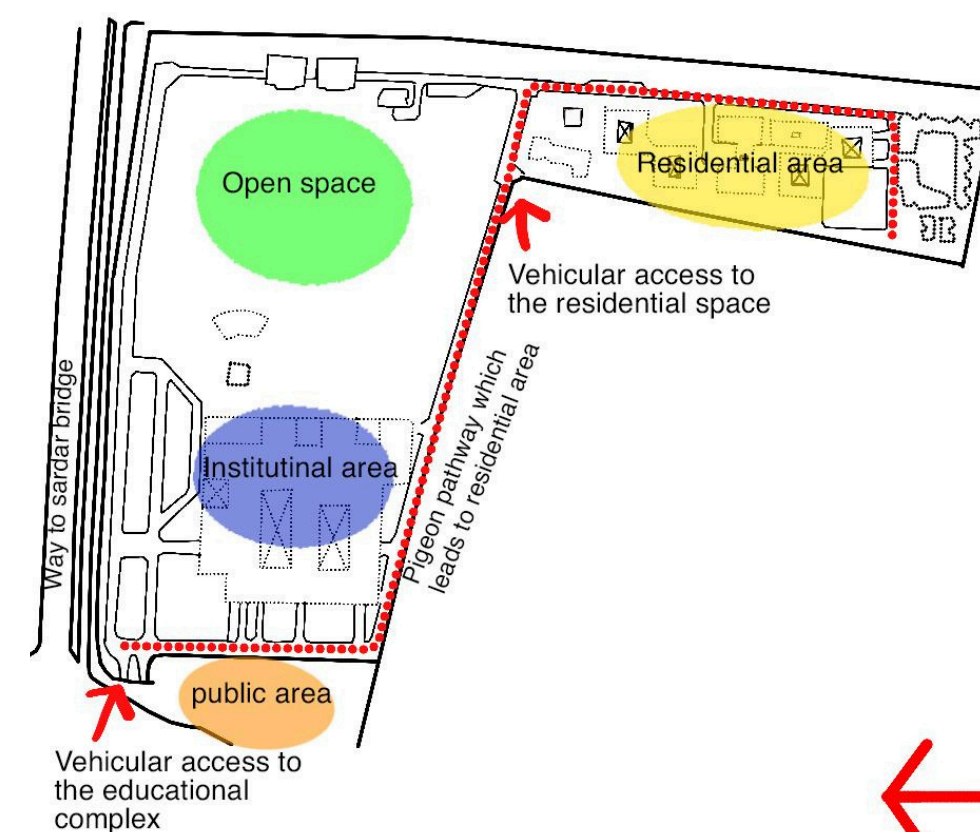


TOPOGRAPHY



ENTRY & ACCESS

- The site can be approached through two entries: one for the institute and other for residential area.
- No entry has been provided along the main road, as it is a heavy traffic zone
- The academic and residential areas are located far apart with the narrow link between the two but having separate access. Both blocks have controlled entrances.
- Vehicular movement is restricted only till the entrance for the visitors.
- But it is possible from residential areas to academic block vice versa.
- And pedestrian and vehicular movement are not separated.



FACILITIES

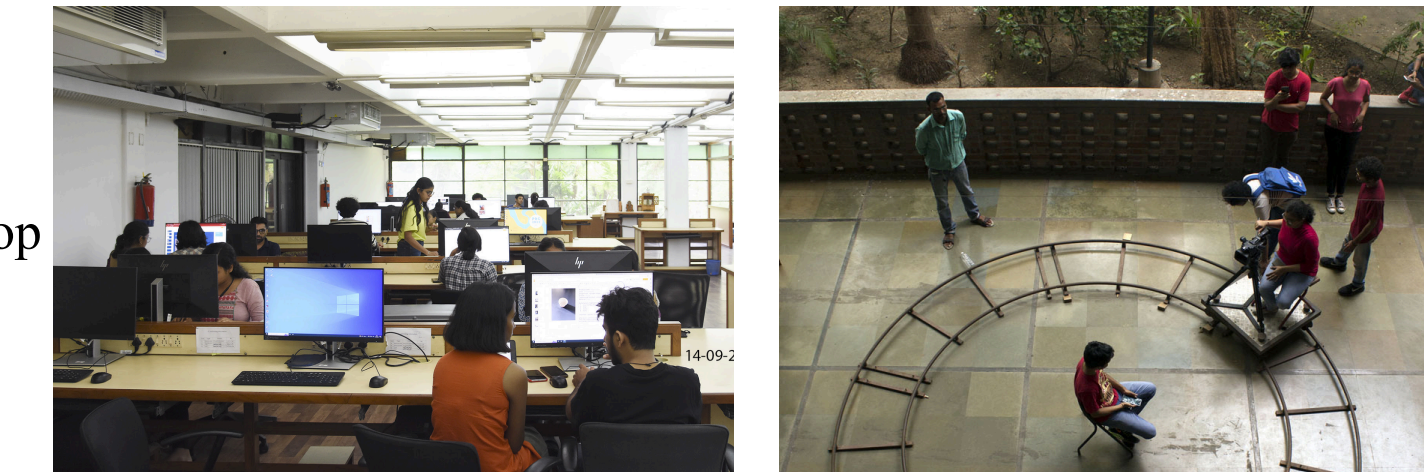
- Lifestyle Accessory Design Studio
- Apparel Design Studio
- Textile Design Studio
- Toy & Game Design Studio
- Photography Studio
- Film & Video Studio
- Digital / New Media Studio
- CAD / Computer Lab
- Wood Workshop
- Metal Workshop
- Leather Workshop
- Textile Printing & Dyeing Workshop
- Model-Making Workshop
- Materials Lab
- Craft / Fine Metalsmithing Lab

TEXTILE / TEXTILE-DESIGN / APPAREL-STUDIO



- Large, well-lit studio floors with uniform north-light for colour-critical work.
- Open-plan layout, Wash areas, drying courts, chemical storage rooms integrated.
- High ceiling for ventilation + heat dissipation from dyeing/printing processes

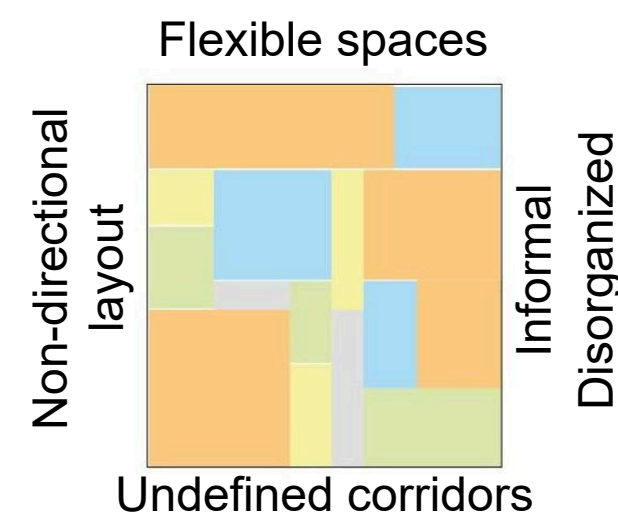
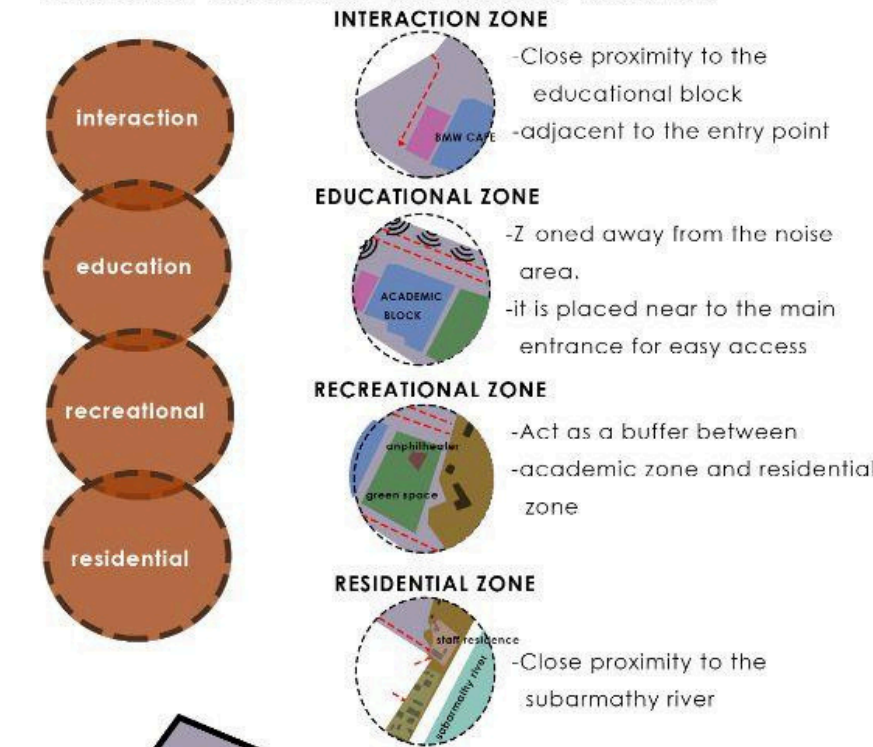
PHOTOGRAPHY / FILM STUDIO



- Light-controlled black interiors to avoid colour bounce.
- Adjustable ceiling rigs, Dedicated dark room.
- Acoustic insulation for video + sound recording.
- Smooth, matte-finish flooring for controlled reflection

ZONING

The site has been zoned from the main access in a hierarchy of INTERACTION > EDUCATIONAL > RECREATIONAL > RESIDENTIAL



- Building feels like a complex.
- Several courtyards at different levels ensure light & ventilation.
- Peripherally running corridors.
- Vertical access means along periphery.

CRAFT WORKSHOP

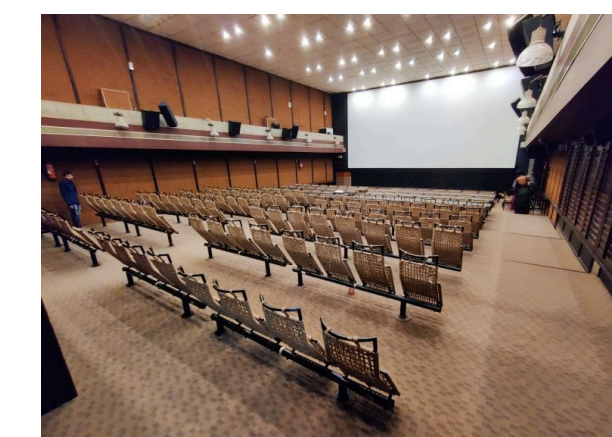


- Industrial-style shed architecture with high roof and trusses.
- Cross-ventilation through large louvres and clerestory windows.
- Reinforced floors to support heavy machines.
- Separate dust and fume extraction systems.
- Wide circulation aisles for safe material movement.



AUDITORIUM

- Multipurpose hall (seminar hall) for events and presentations.
- Supports student workshops, lectures, and cultural programs.
- Flexible seating / flat-floor arrangement.
- Adjacent to studios for easy access by students and staff.
- Equipped with basic AV facilities for presentations and screenings.



DRAWBACKS

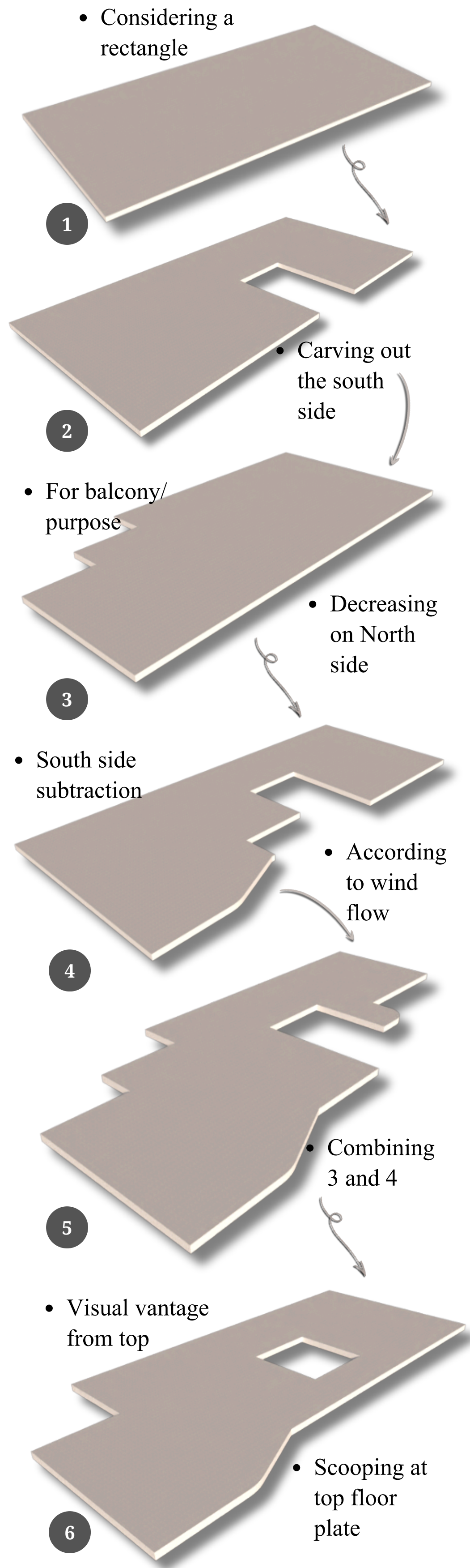
- Auditorium is not a dedicated theatre, limiting large-scale performances.
- Limited outdoor performance/exhibition spaces for public engagement.
- Some workshops have space constraints for large collaborative projects.
- Lack of detailed publicly available.
- Heavy dependence on multipurpose spaces reduces specialized facility efficiency.

INFERENCE

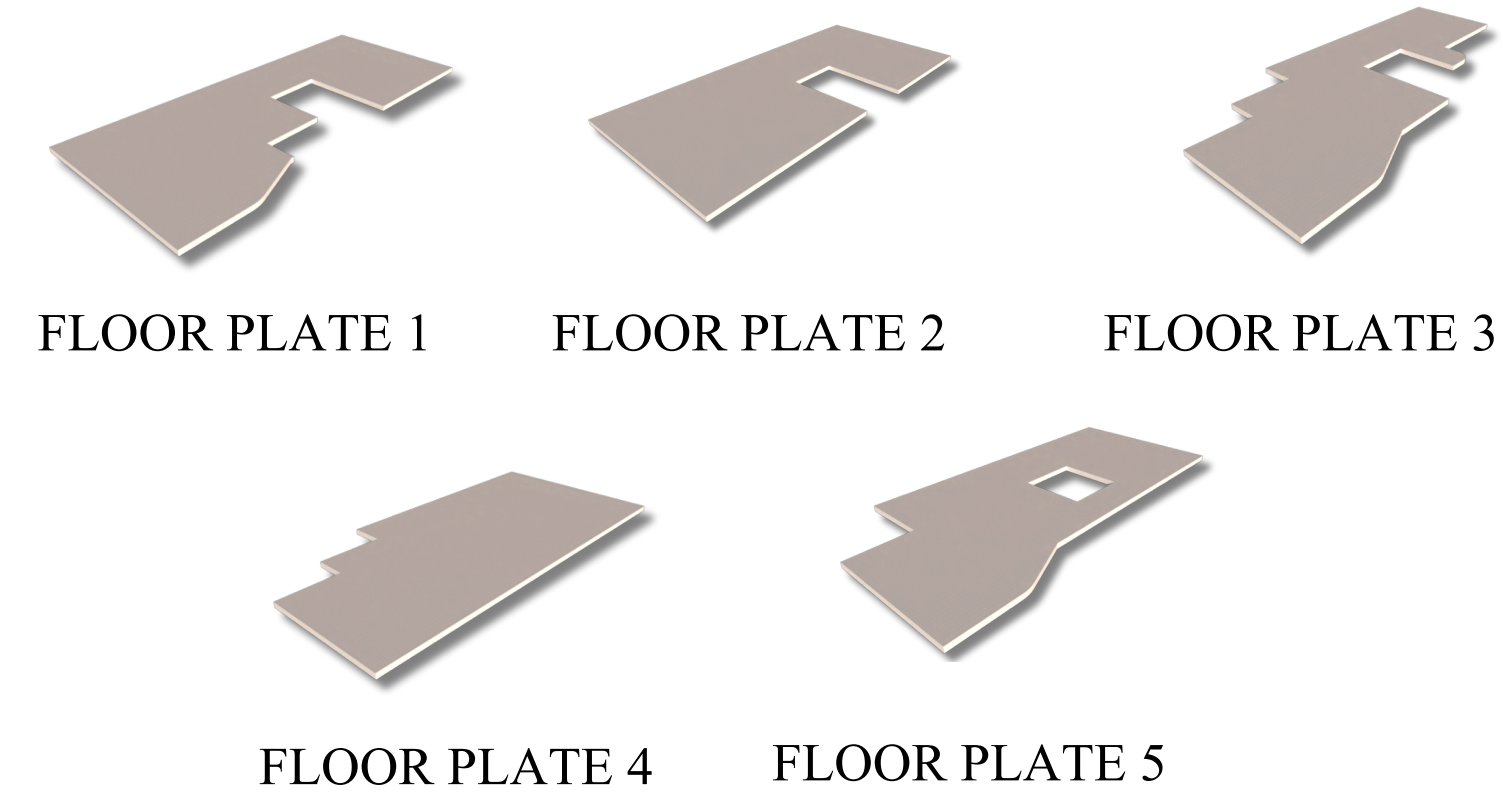
- NID Gandhinagar effectively integrates design studios, workshops, and labs in a compact campus.
- Emphasis on flexible, multi-disciplinary spaces fosters experimentation across design fields.
- Use of open layouts and modular furniture encourages collaboration and innovation.
- Combination of traditional craft labs + digital fabrication labs provides holistic design education.
- Even without a formal auditorium, multipurpose halls support lectures, exhibitions, and small performances.

MASSING

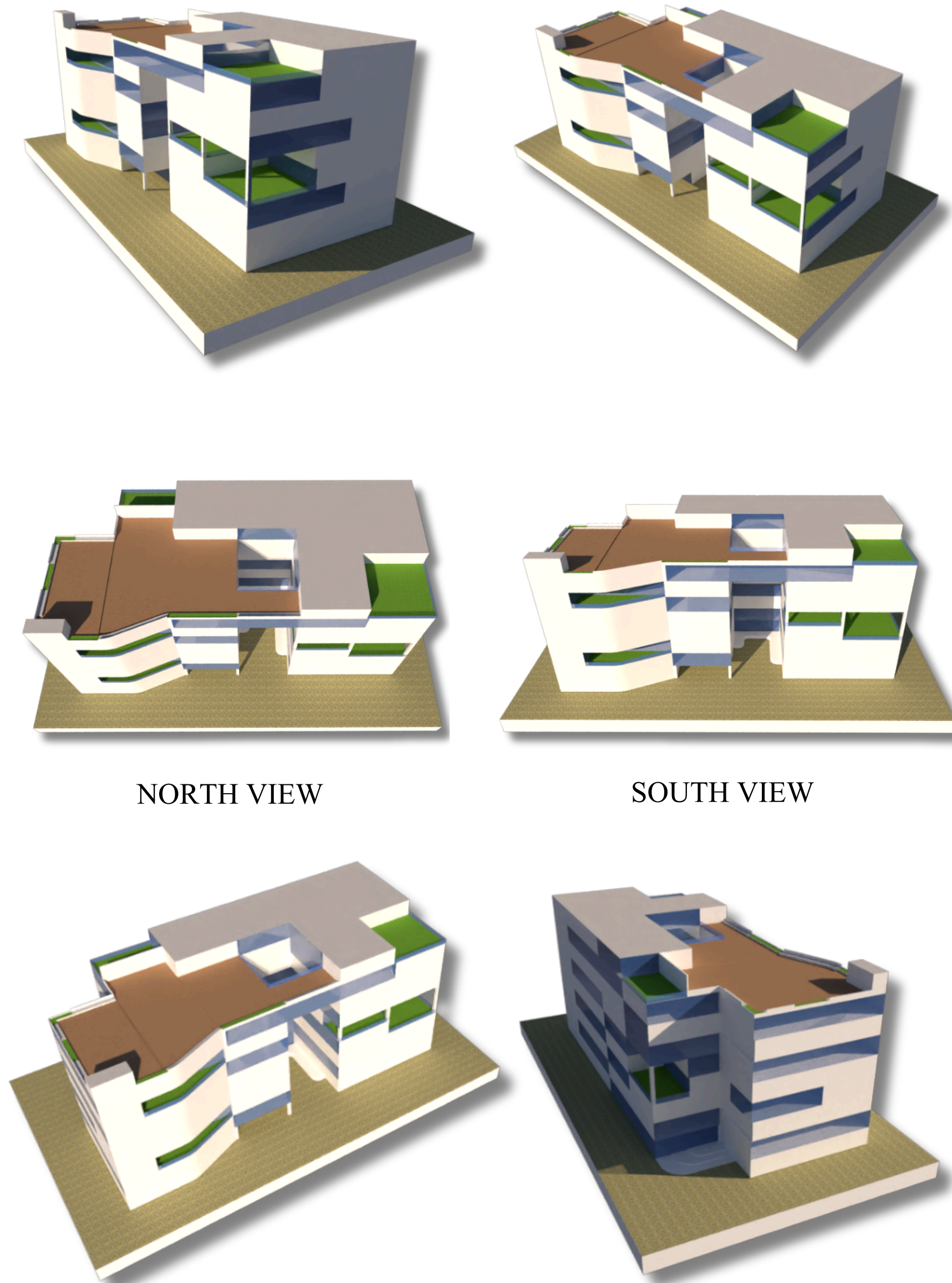
MASSING EVOLUTION



FLOOR PLATE

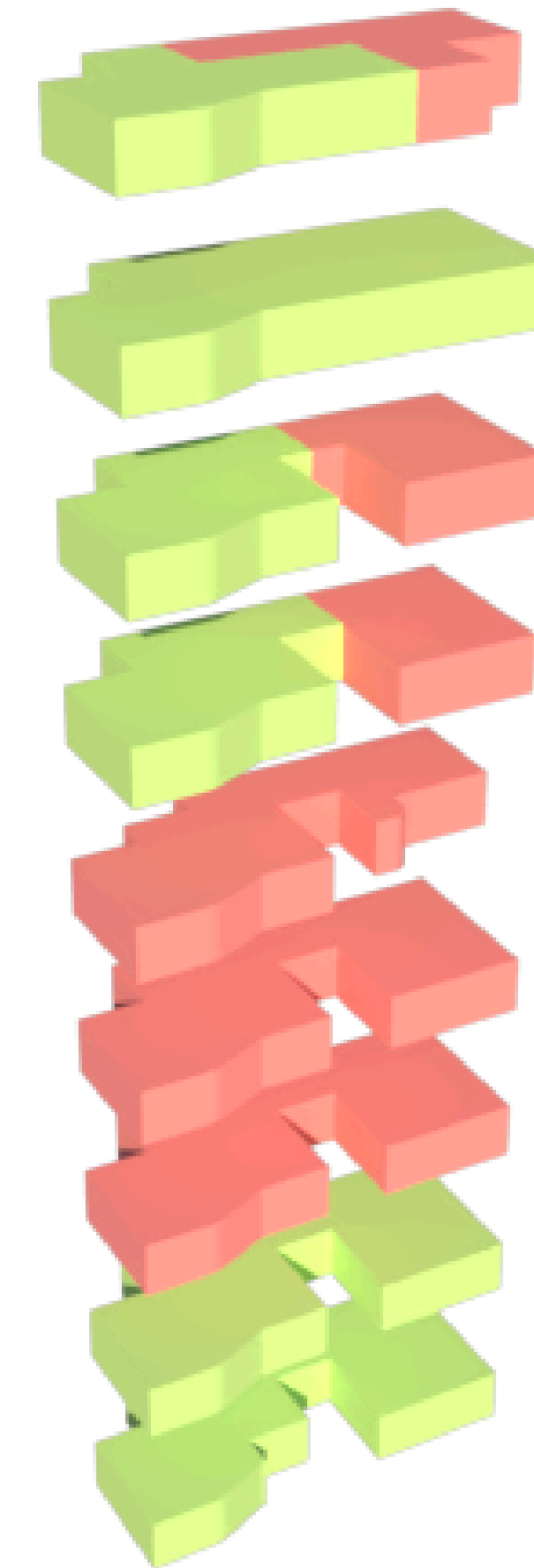


FINAL MASSING



ZONING

VERTICAL ZONING



Public Spaces

Semi Public Spaces

- The public and semi-public floors are arranged as alternating, interlocking blocks, visually resembling a sutured seam

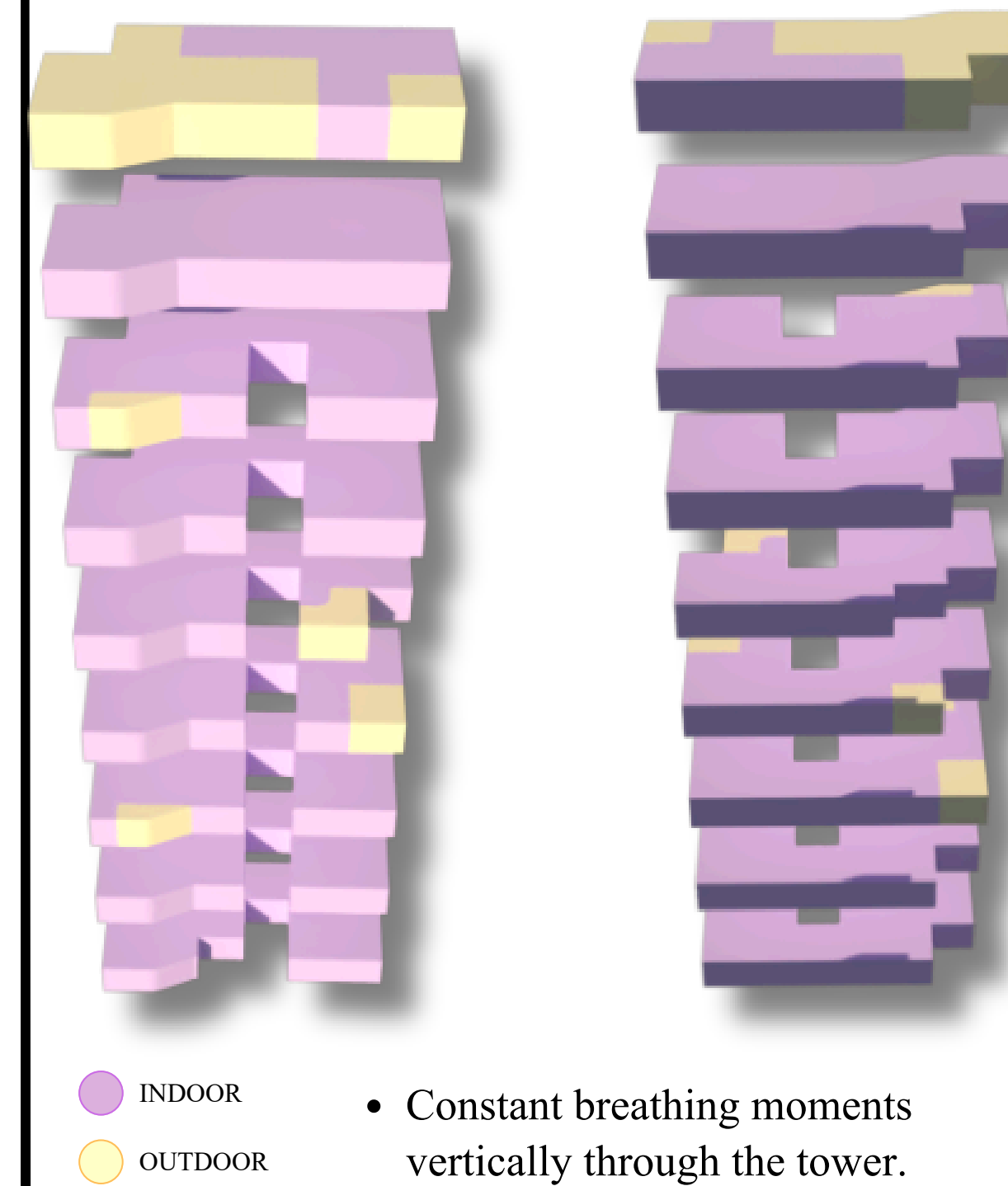
OUTDOOR DECK	YOGA
GAMING ZONE	
GYM	MARTIAL ARTS
DISPLAY	SHOOTING
MUSIC	PHOTOGRAPHY
ART AND CRAFT	TEXTILE
DRAMA, DANCE	
AUDITORIUMS	
CAFE, RETAIL STORE, MINI PERFORMANCE	

- Public zones act as breathing layers between stacked semi-public floors.
- The vertical zig-zag arrangement visually expresses joining of contrasting needs.
- Users experience alternating atmospheres:

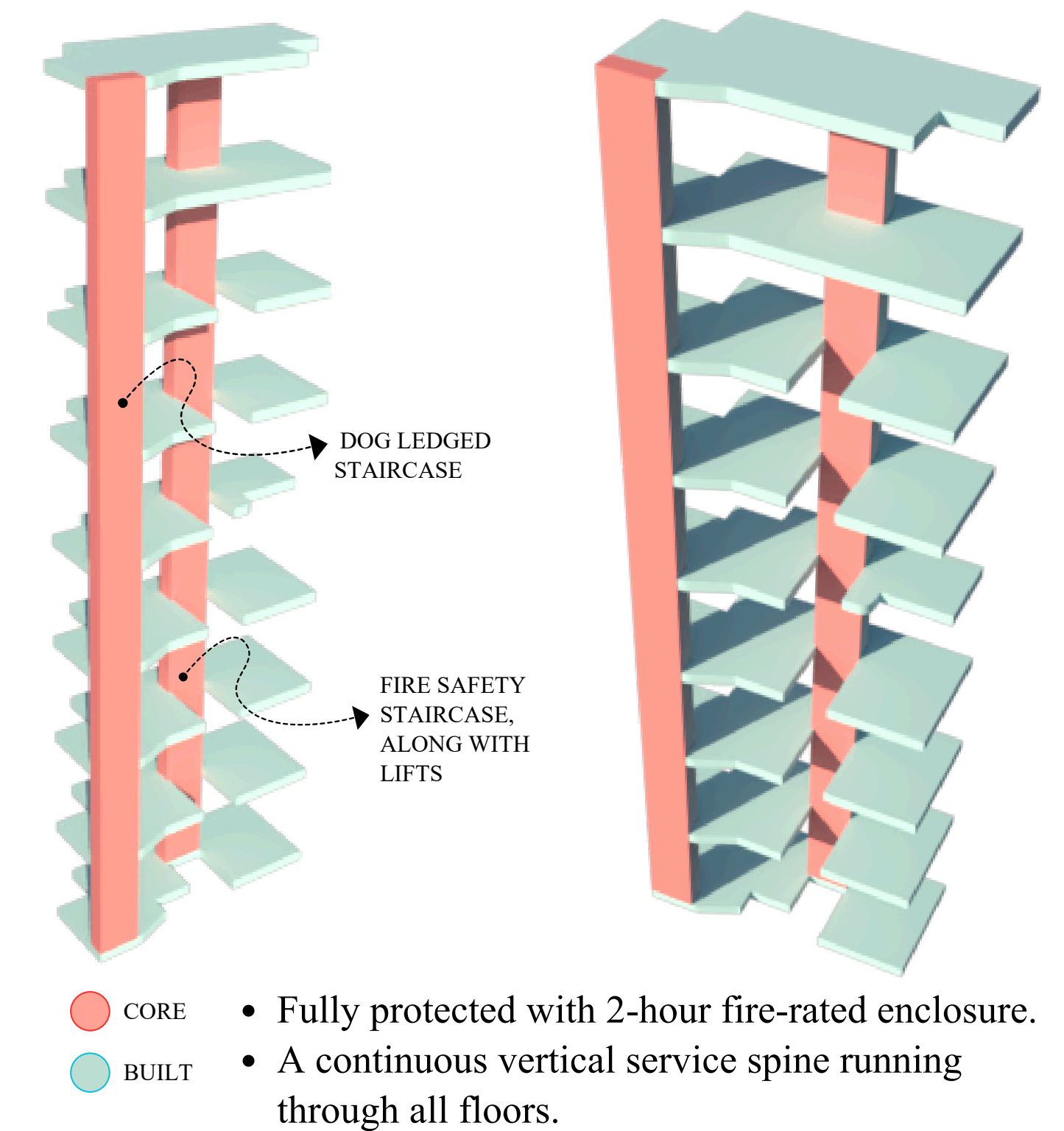
Open → Controlled → Open → Controlled



INDOOR OUTDOOR RELATION



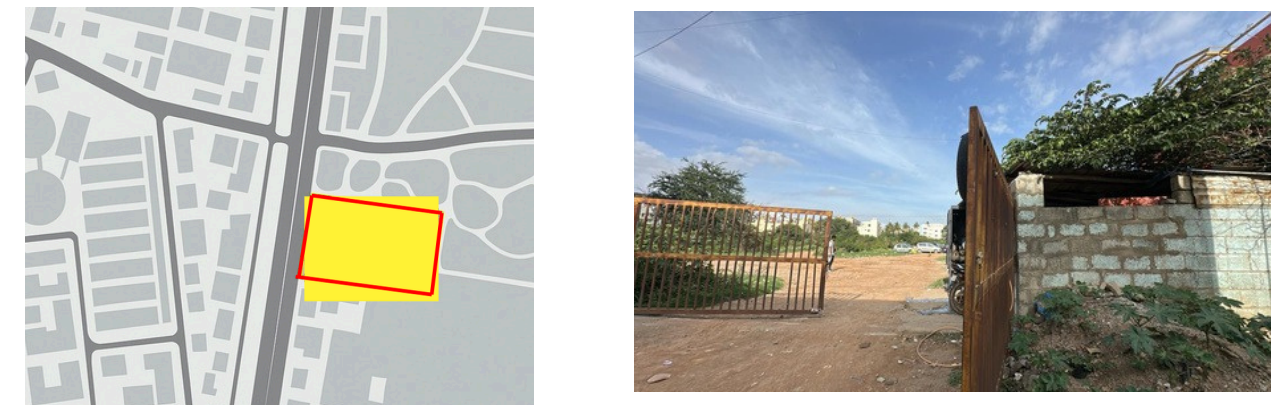
VERTICAL CIRCULATION



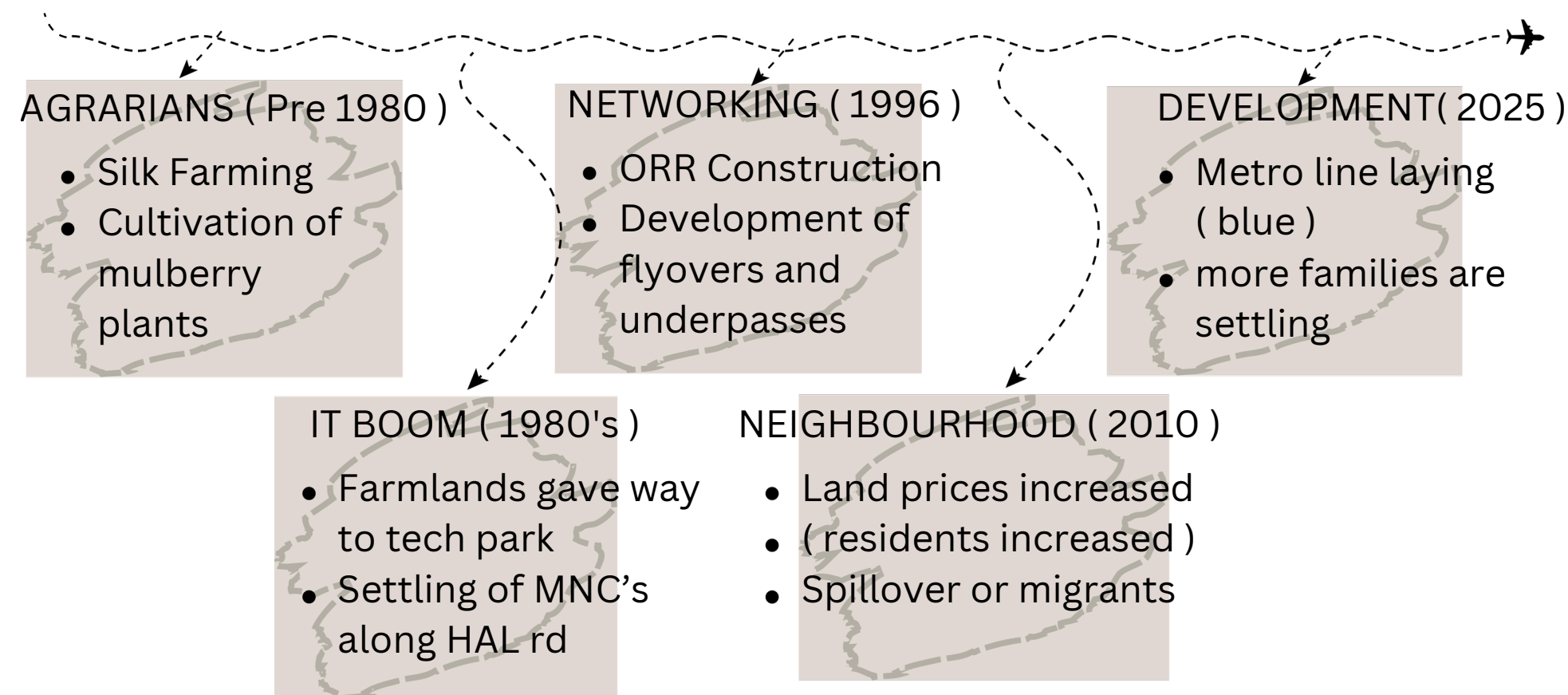
MARATHAHALLI

INTRODUCTION

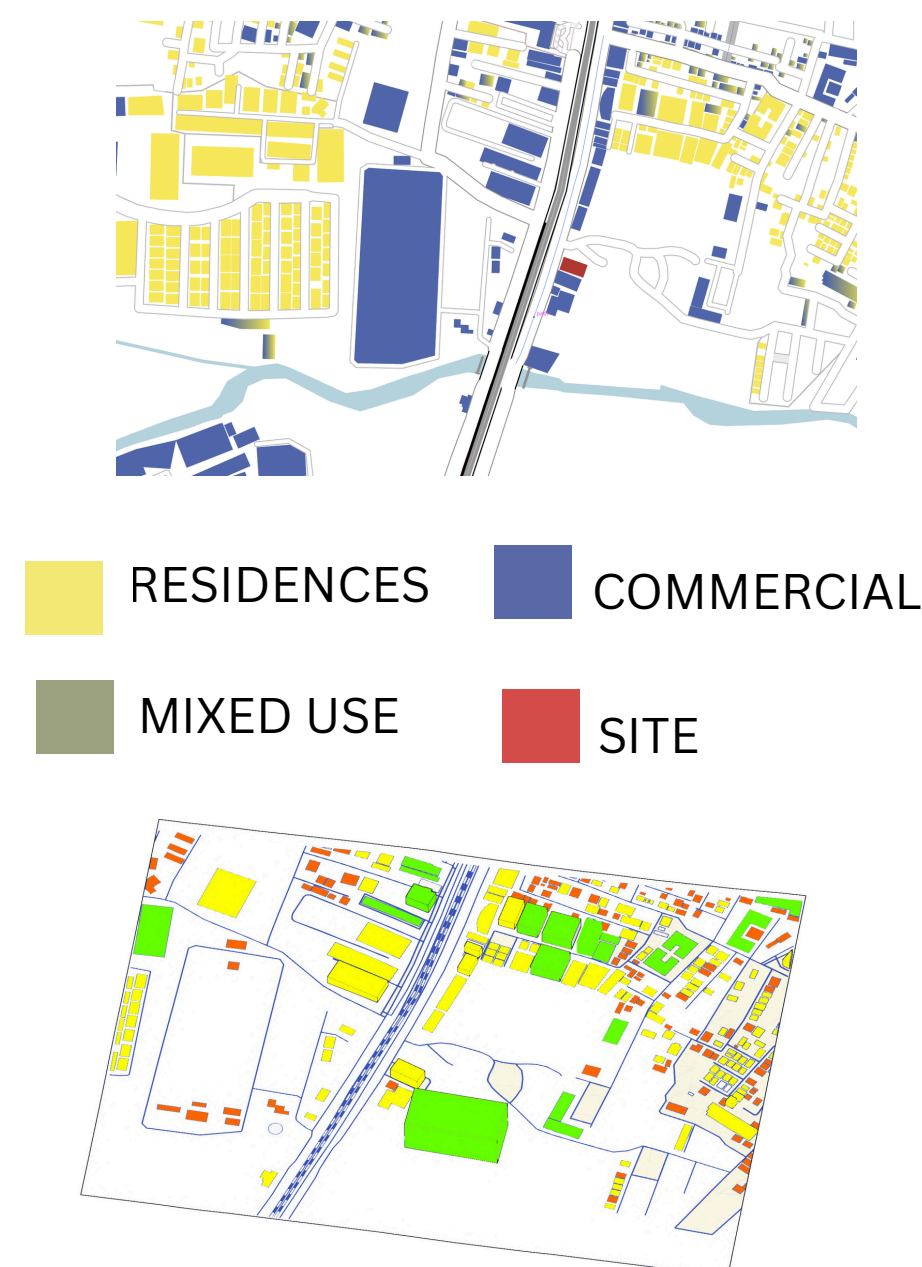
- LOCATION : Opposite BWSSB Water Treatment Plant, Marathahalli, Bengaluru
- SITE AREA : 1.5 acres
- SITE OVERVIEW:
- 1. Near Varthur Lake Opposite Marathahalli Water Treatment Plant.
- 2. This position offers unique opportunities for
 - development, leveraging both natural beauty and urban
 - connectivity.



HISTORY



TYOLOGY OF BUILDINGS



INFOGRAPHICS

TRANSPORT NETWORK (SCALE 1:1000)
LIGHTING PATTERNS ALONG THE MAIN ROAD (SCALE 1:1000)
LAYERS OF DRAINAGE
DISPLACEMENT FROM HAL AIRPORT

LEGEND:
 SITE (Red dot)
 BUS STOPS (Bus icon)
 PROPOSED ELEVATED METRO STATION (Metro icon)
 WATER TREATMENT PLANT (Water icon)
 STREET LIGHT (Light icon)
 HAL AIRPORT (Airplane icon)
 SKYWALK (Skywalk icon)
 BWSSB PIPELINE (Blue line)
 BWSSB SEWAGE WATER PIPELINE (Orange line)
 NALA OR RAJAKALUVE (Green line)
 FOOTPATH (Dotted line)
 PEDESTRIAN PATHWAY (Dashed line)
 NETWORK CABLES (Yellow circle)

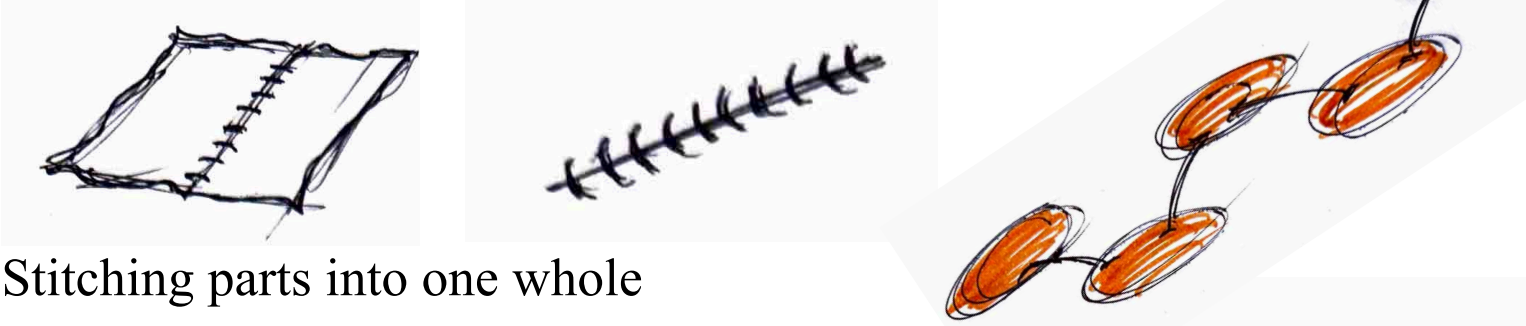
BUILDING HEIGHTS:
■ SINGLE-STOREY (3M)
■ TWO-STOREY
■ MULTI-STOREY

- The surrounding building heights vary: most residential areas on the North are single to two-storey houses, forming a low-rise neighborhood fabric. On the north-west closer to the commercial stretch, buildings rise to two and three storeys, reflecting mixed-use activity. Overall, the context transitions from low-rise residential to moderately dense commercial development.

SUTURE

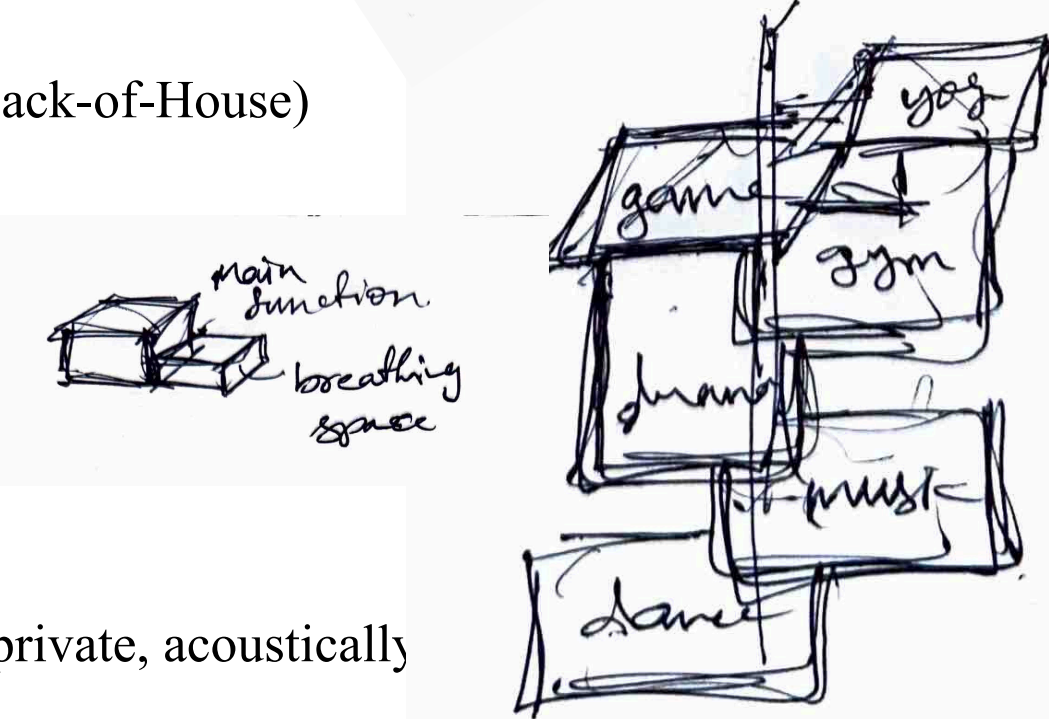
SUTURE

Spaces stitched together like threads in fabric.

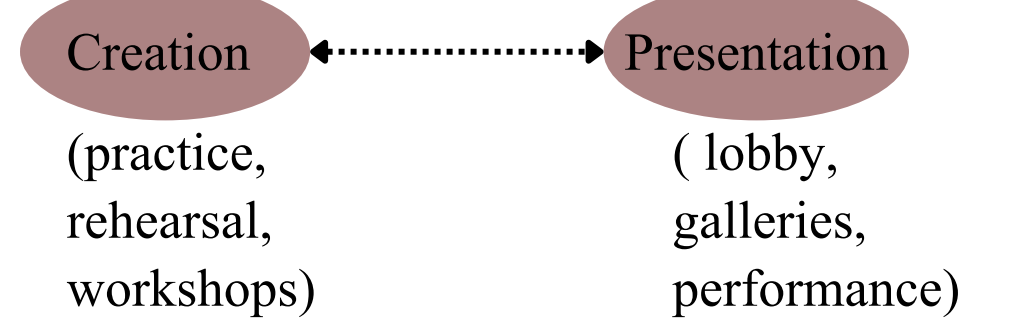


CREATIVE / PROCESS (Back-of-House)

- Rehearsal rooms
- Dance studios
- Music practice rooms
- Drama workshops
- Costume rooms
- Prop & set workshops
- Green rooms



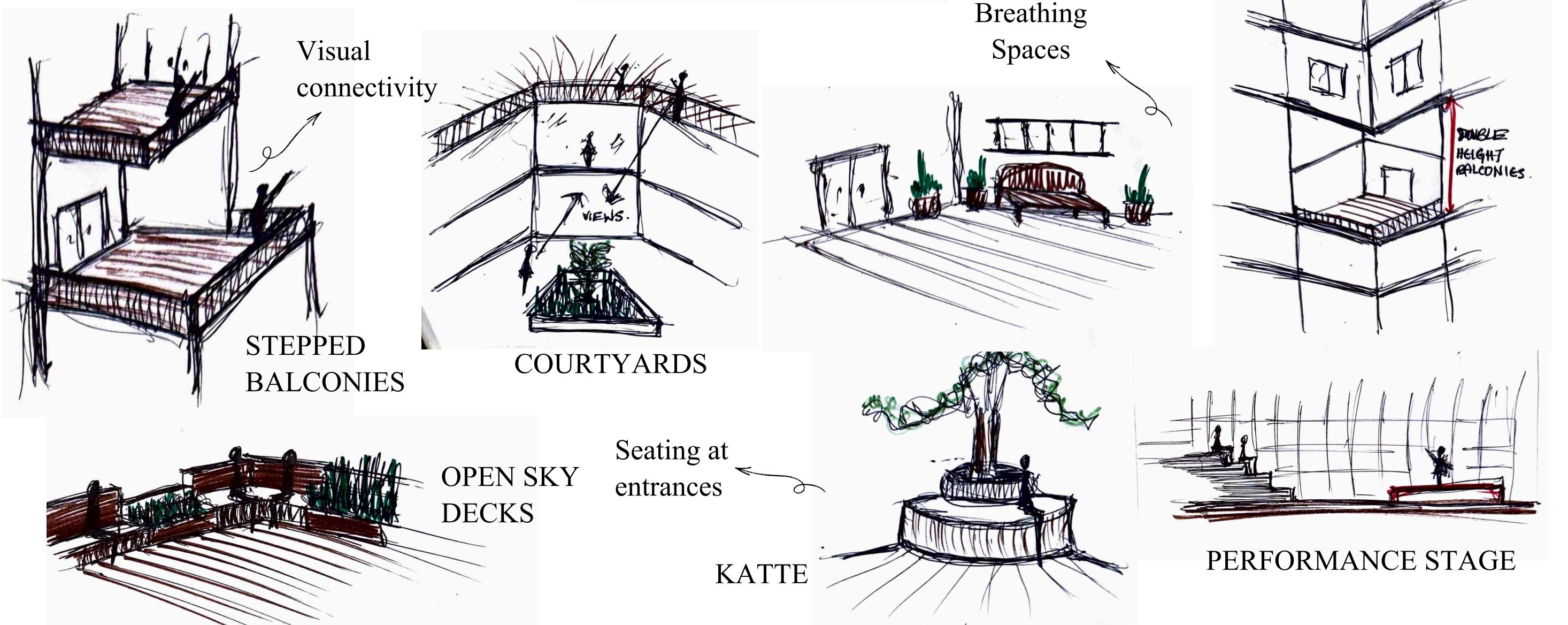
A Performing Arts Centre has two worlds:



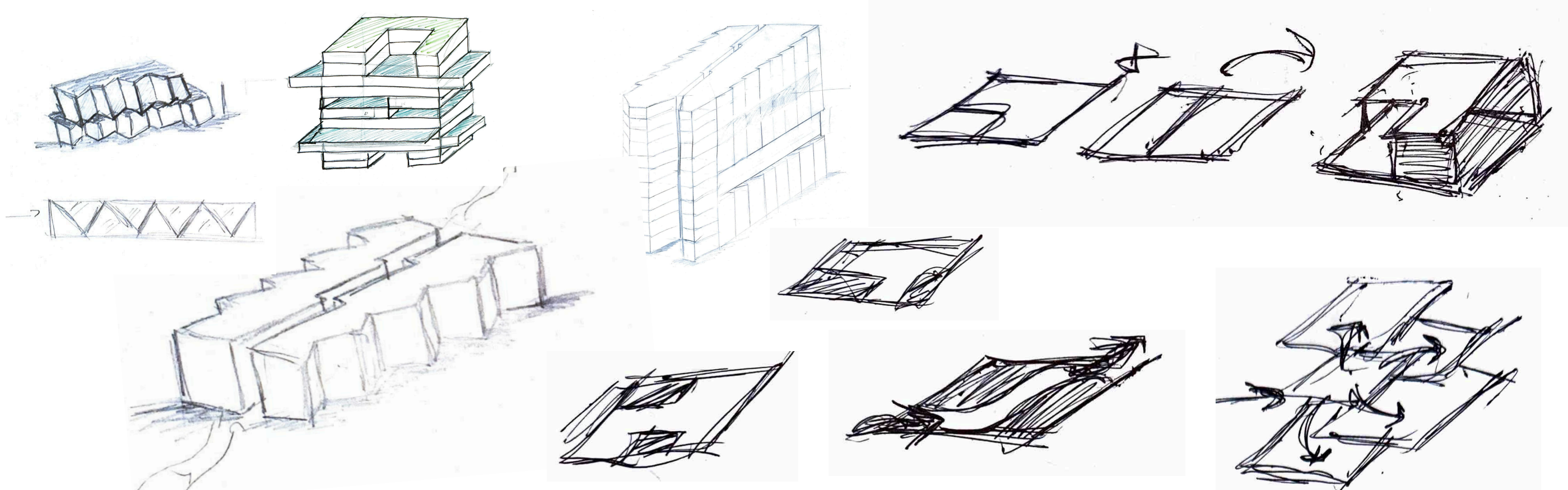
PUBLIC / PERFORMANCE (Front-of-House)

- Auditorium
- Black box theatre
- Open stage
- Foyer
- Exhibition
- Cafe
- Public plaza

These are open, expressive, crowded, transparent.



INITIAL CONCEPTUAL SKETCHES





3m wide Footpath

Service road

Marathahalli outer ring road

868.00

Marathahalli outer ring road

867.50

Service road

3m wide Footpath

867.00

LANDSCAPE

866.50

867.50

TRANSFORMER YARD

RETAIL SHOP

MINI PERFORMANCE STAGE

EXHIBITION

CCTV SURVEILLANCE

PANTRY

ADMIN

WATER BODY

BILLING COUNTER

M TOILET

F TOILET

STORAGE

STORAGE

WORKING STAFF

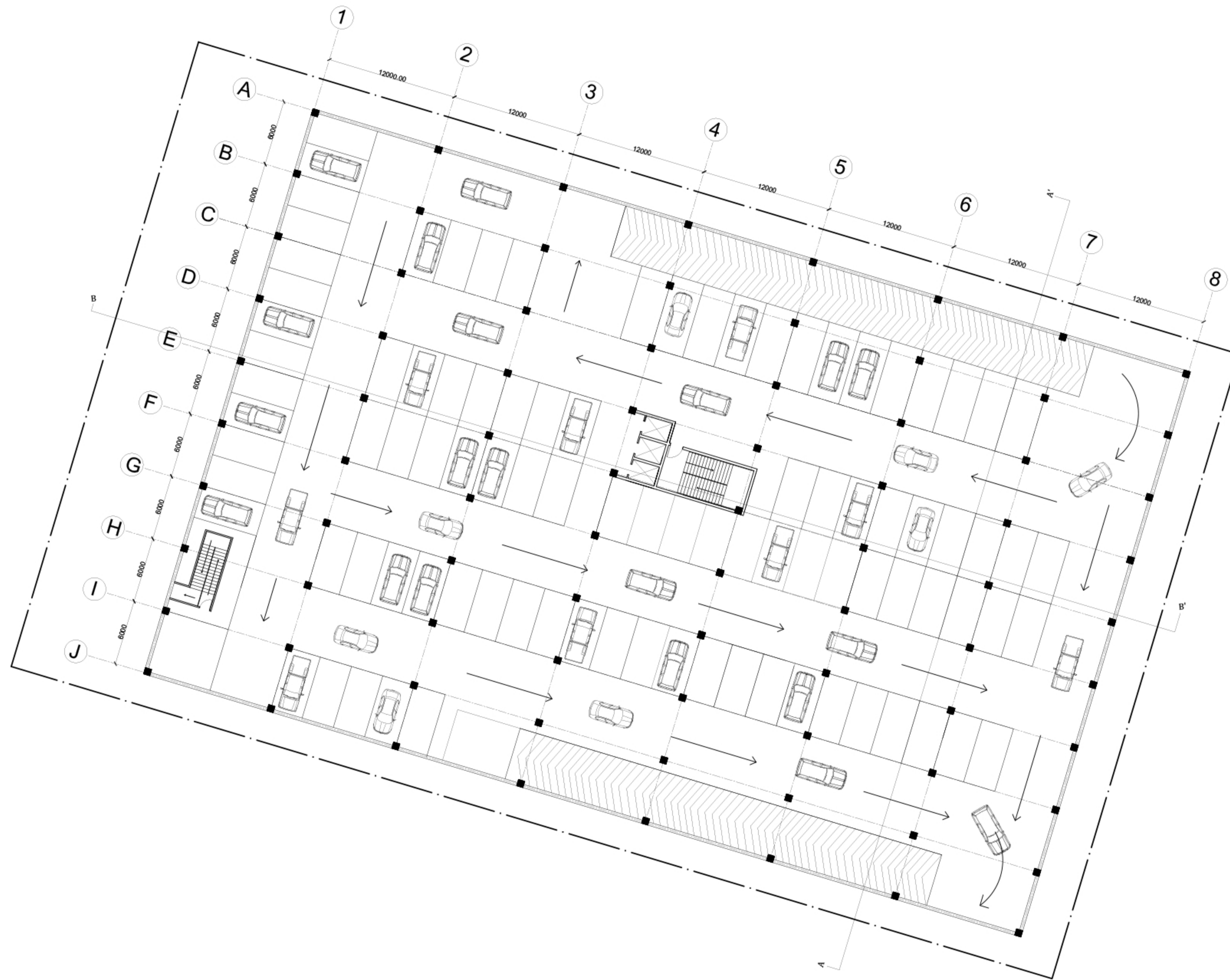
UTILITY

KITCHEN

TAKE AWAY

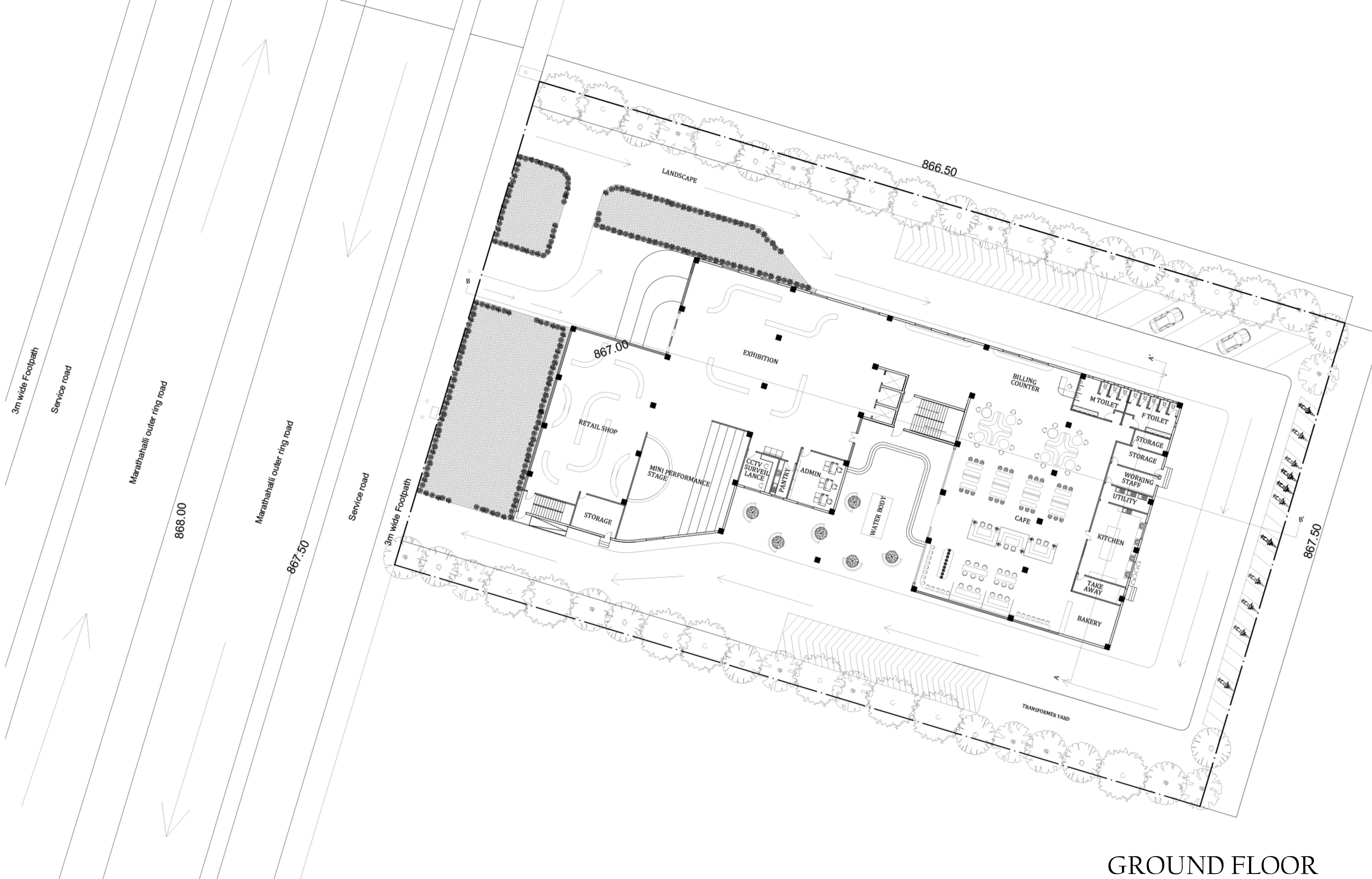
BAKERY

CAFE



BASEMENT FLOOR



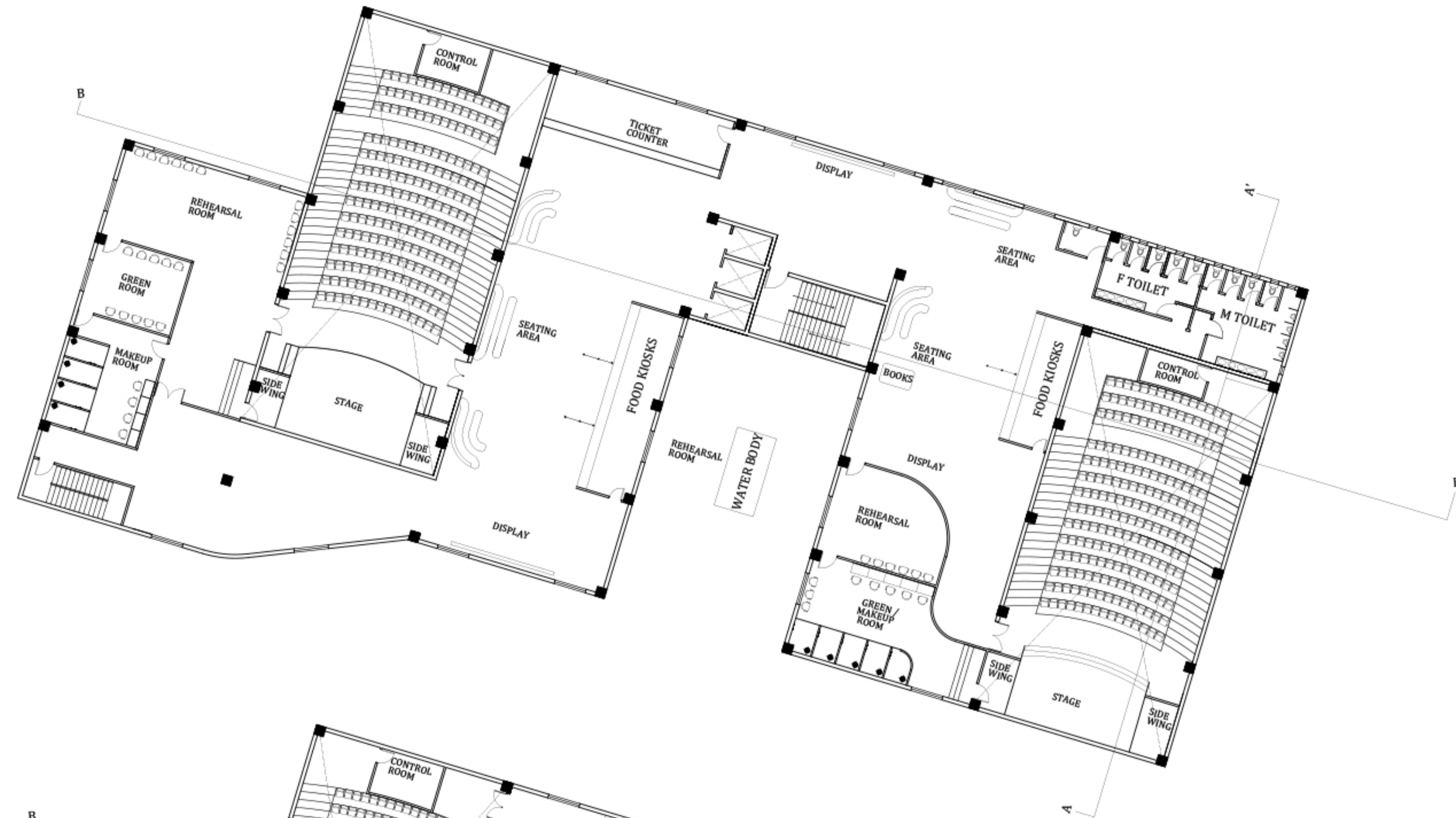


GROUND FLOOR

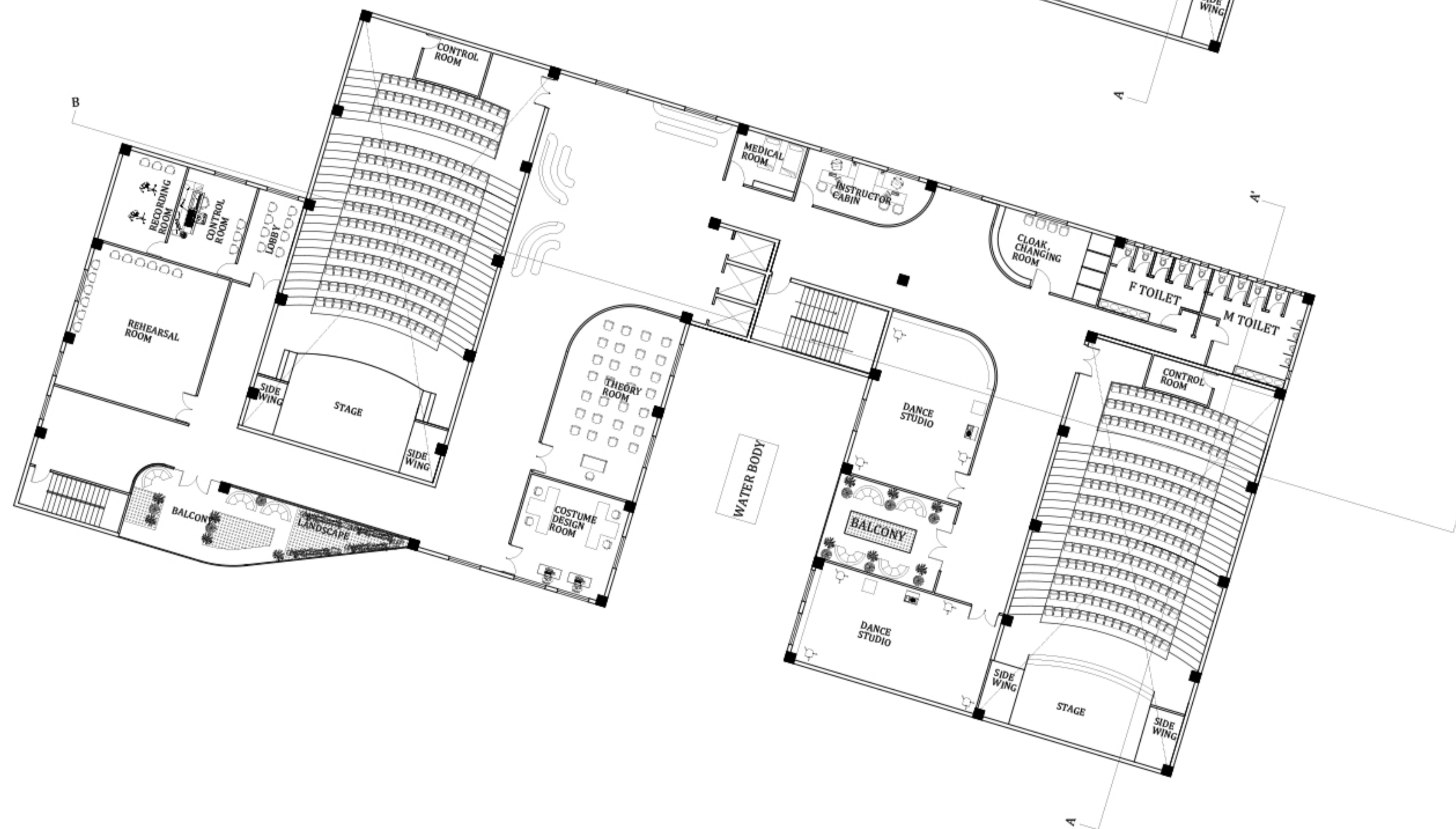
AD 7 : FLOOR PLANS

NAME : B. YASHWANTH REDDY
 USN : 1DC22AT014
 CLASS : SEM 7'A'





FIRST FLOOR



SECOND FLOOR



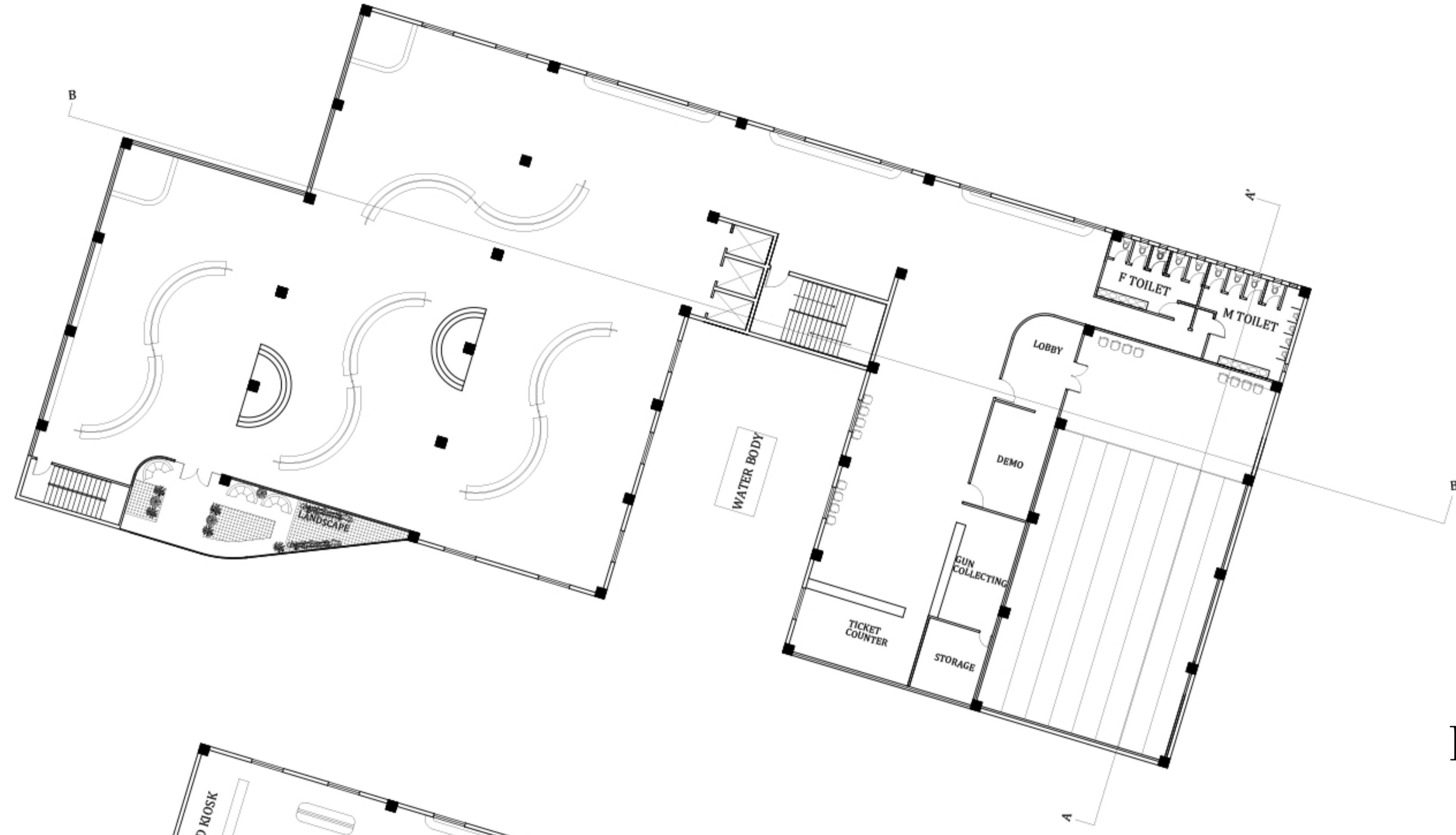


THIRD FLOOR

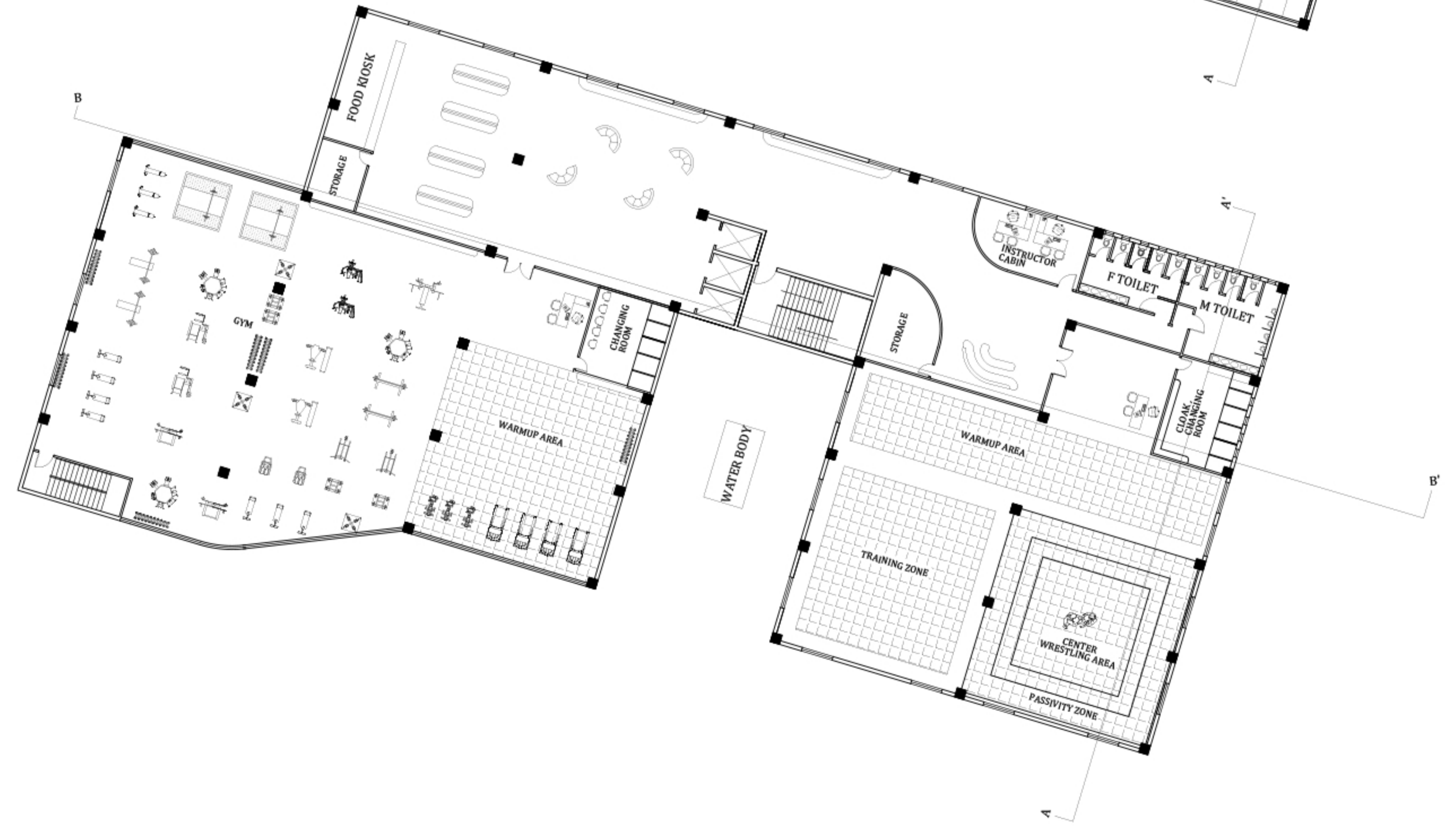


FOURTH FLOOR





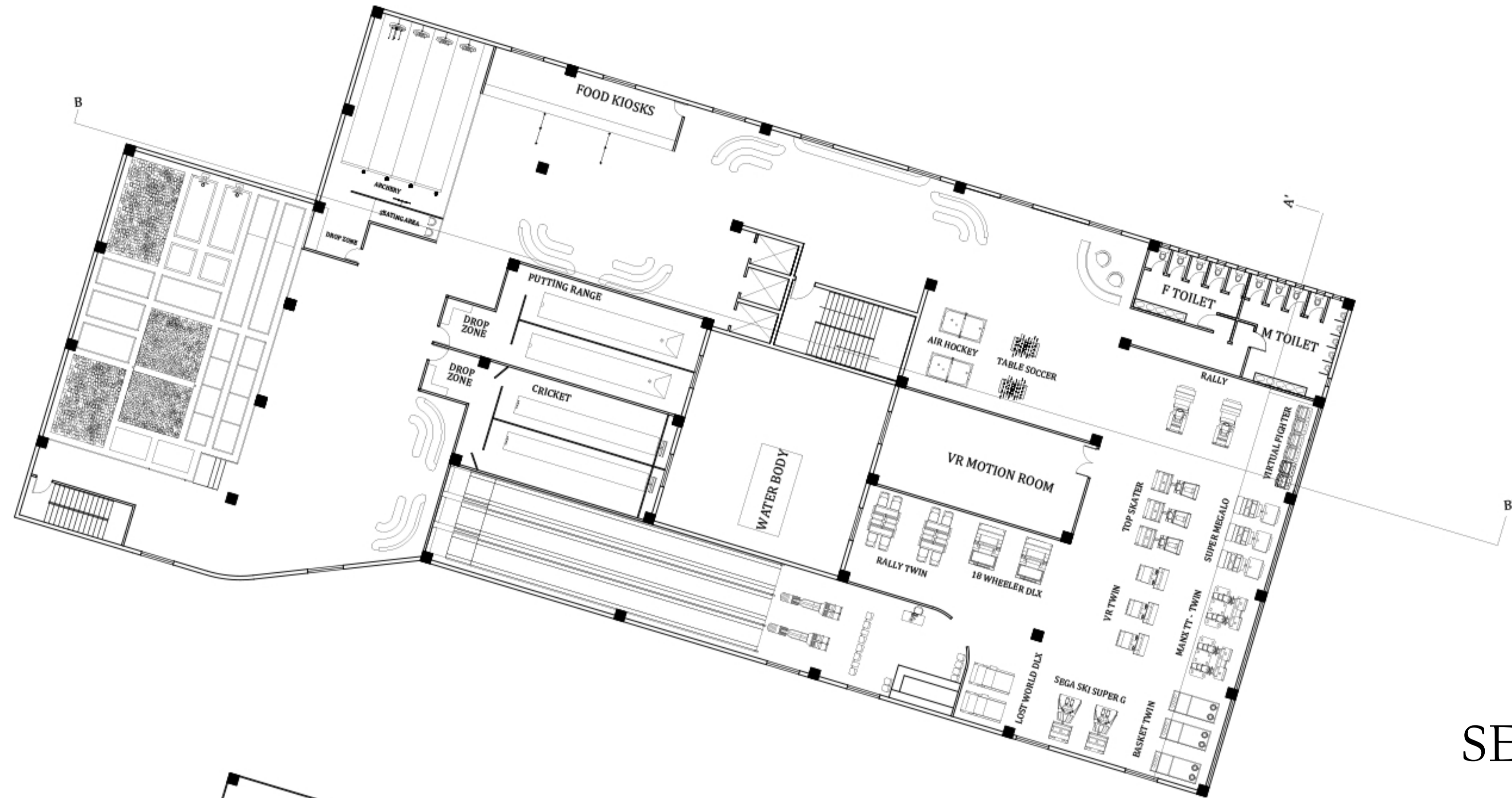
FIFTH FLOOR



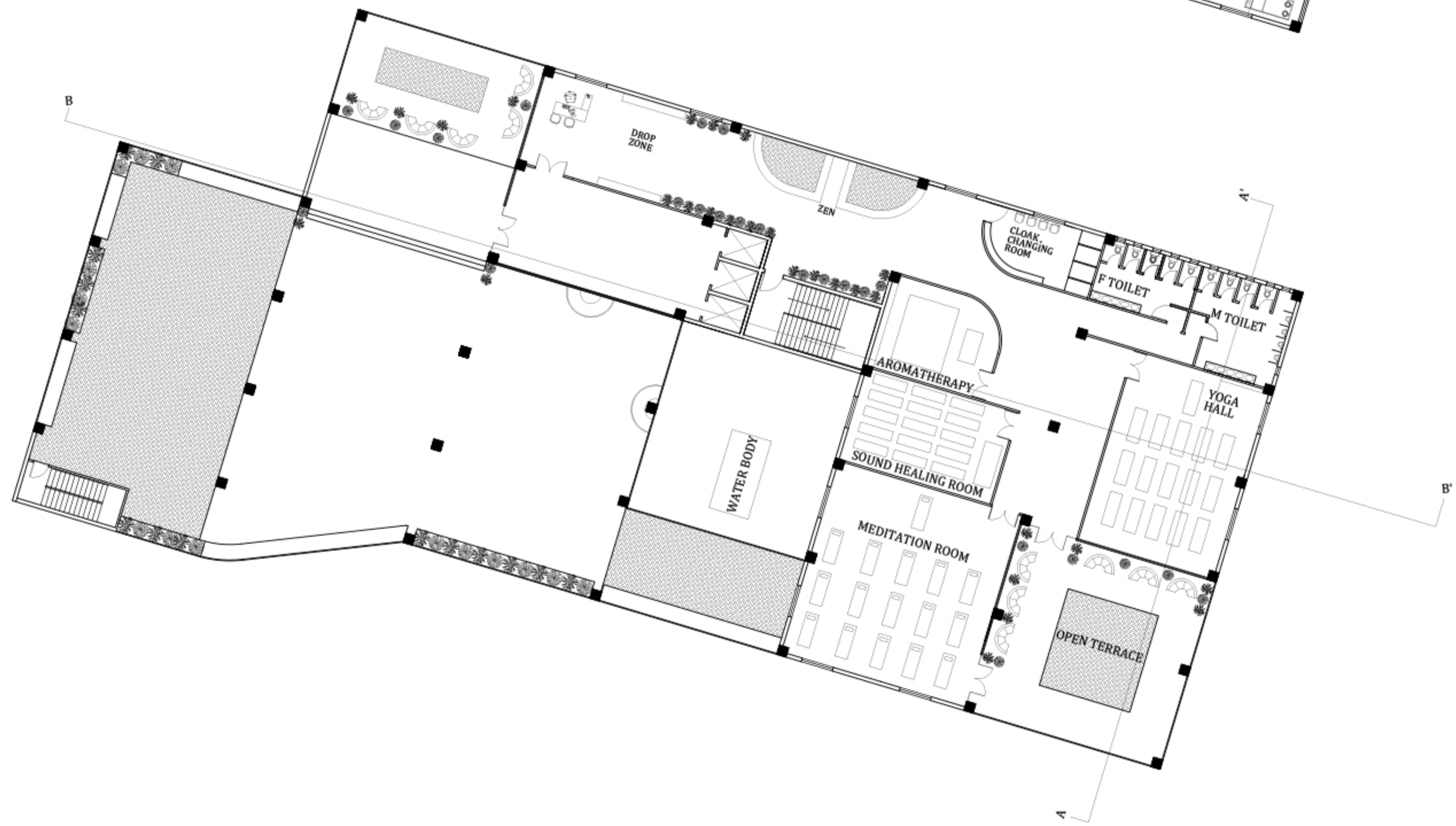
SIXTH FLOOR

AD 7 : FLOOR PLANS



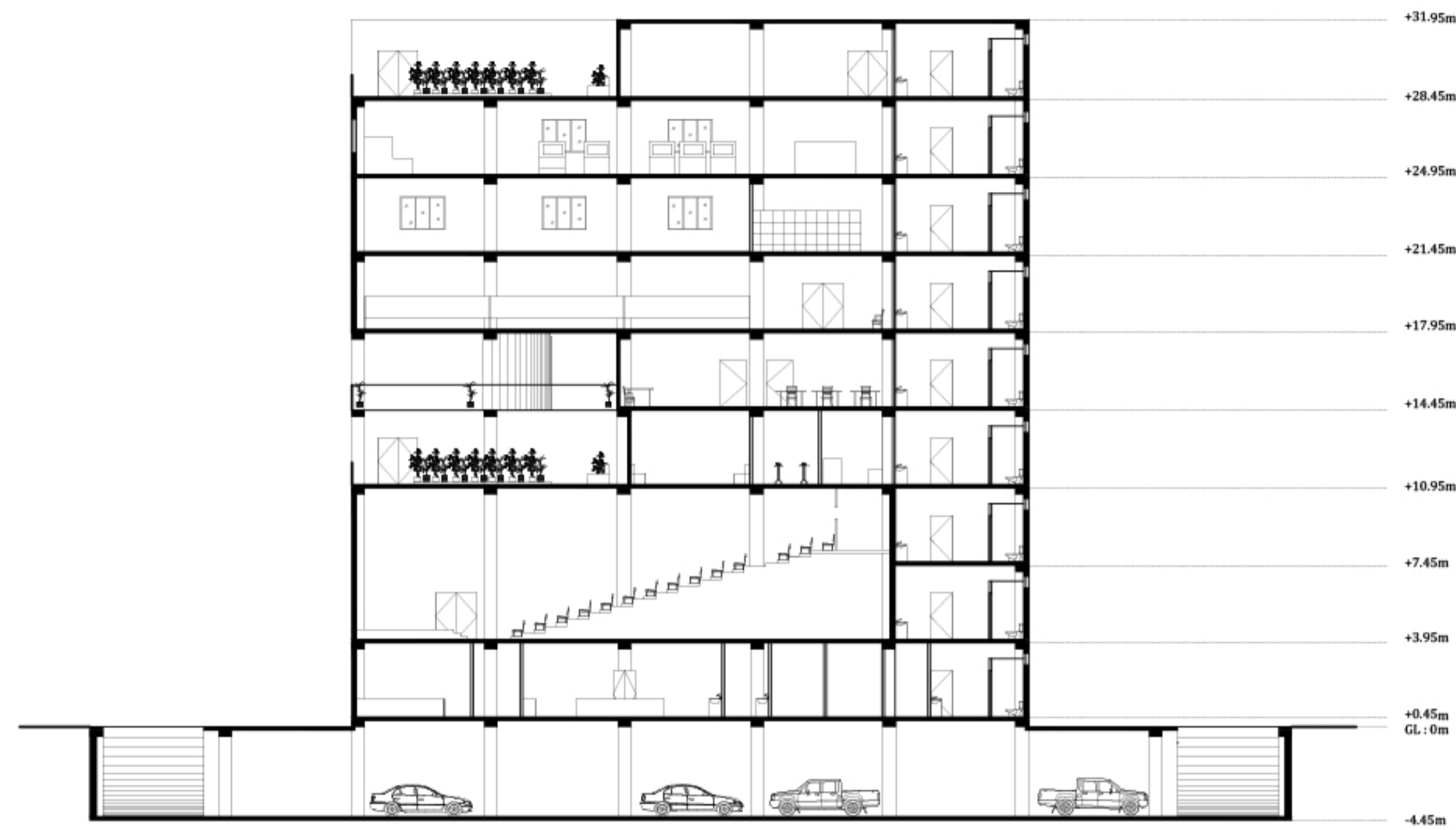


SEVENTH FLOOR

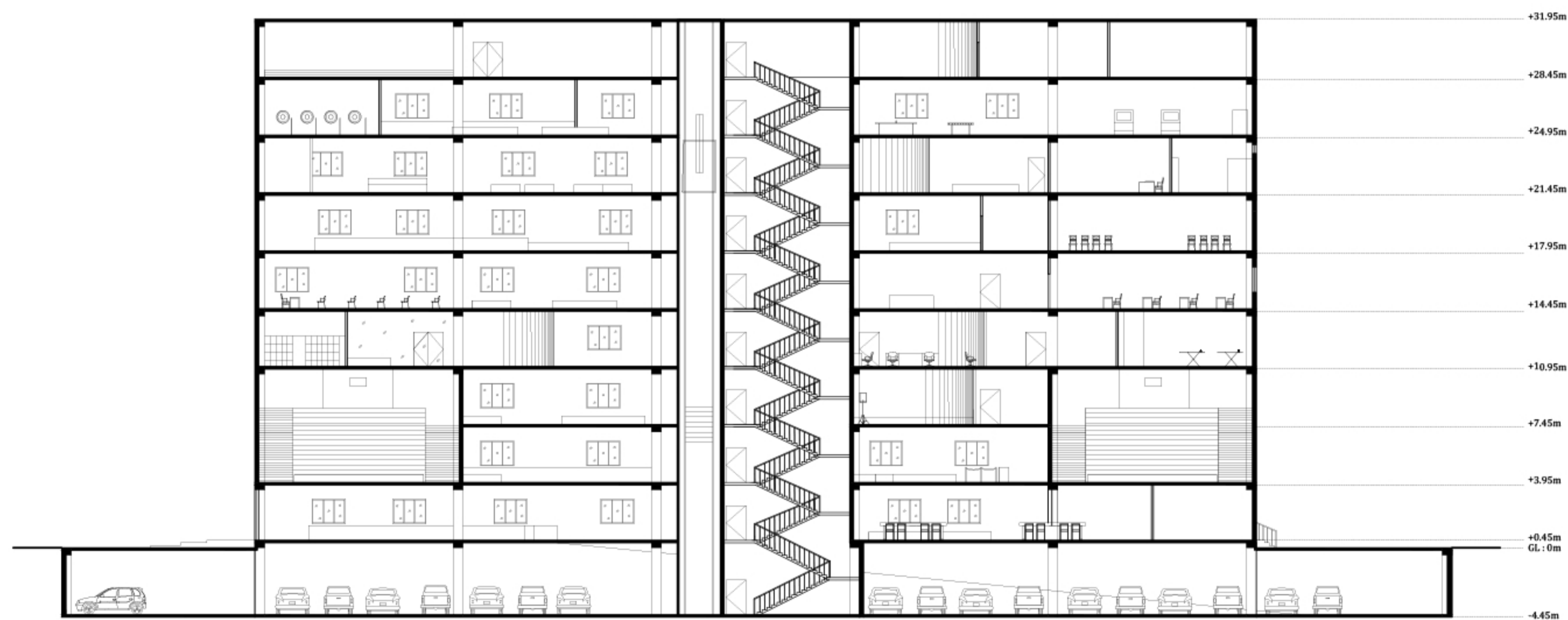


EIGHTH FLOOR





SECTION AA'



SECTION BB'

