

# TEA SPOT

---

A quiet learning-focused tea space for students



Valeriia Popova

# THE PROBLEM

---

In today's world, coffee shops are extremely widespread, while tea spaces are still rare and underdeveloped.

As a result, most social and study environments are built around coffee culture — often loud, fast-paced, and not always suitable for focus or calm activities.

Students especially lack quiet, warm and balanced spaces designed for learning, reading, and reflection.

---

# THE IDEA

---

Tea Spot is a small-scale tea space designed as an alternative to the dominant coffee-shop culture.

It focuses on creating a calm environment for studying, thinking, and social interaction – based on the slower, more mindful culture of tea.

---

# WHY TEA?

---

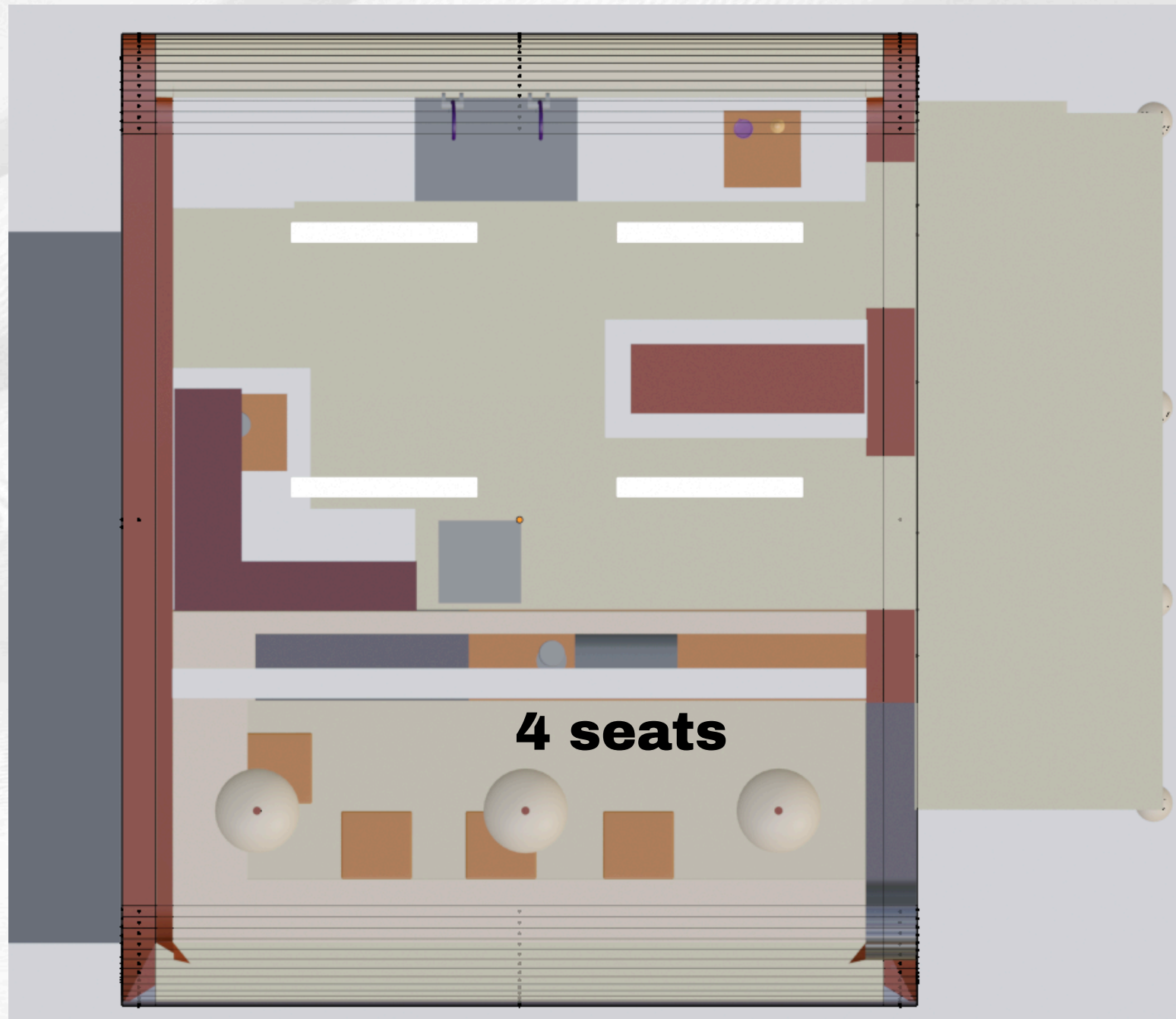
Tea culture is historically connected to calmness, focus, and conversation.

Unlike coffee spaces that often emphasize speed and consumption, Tea Spot is designed around slowing down and creating a peaceful mental environment.

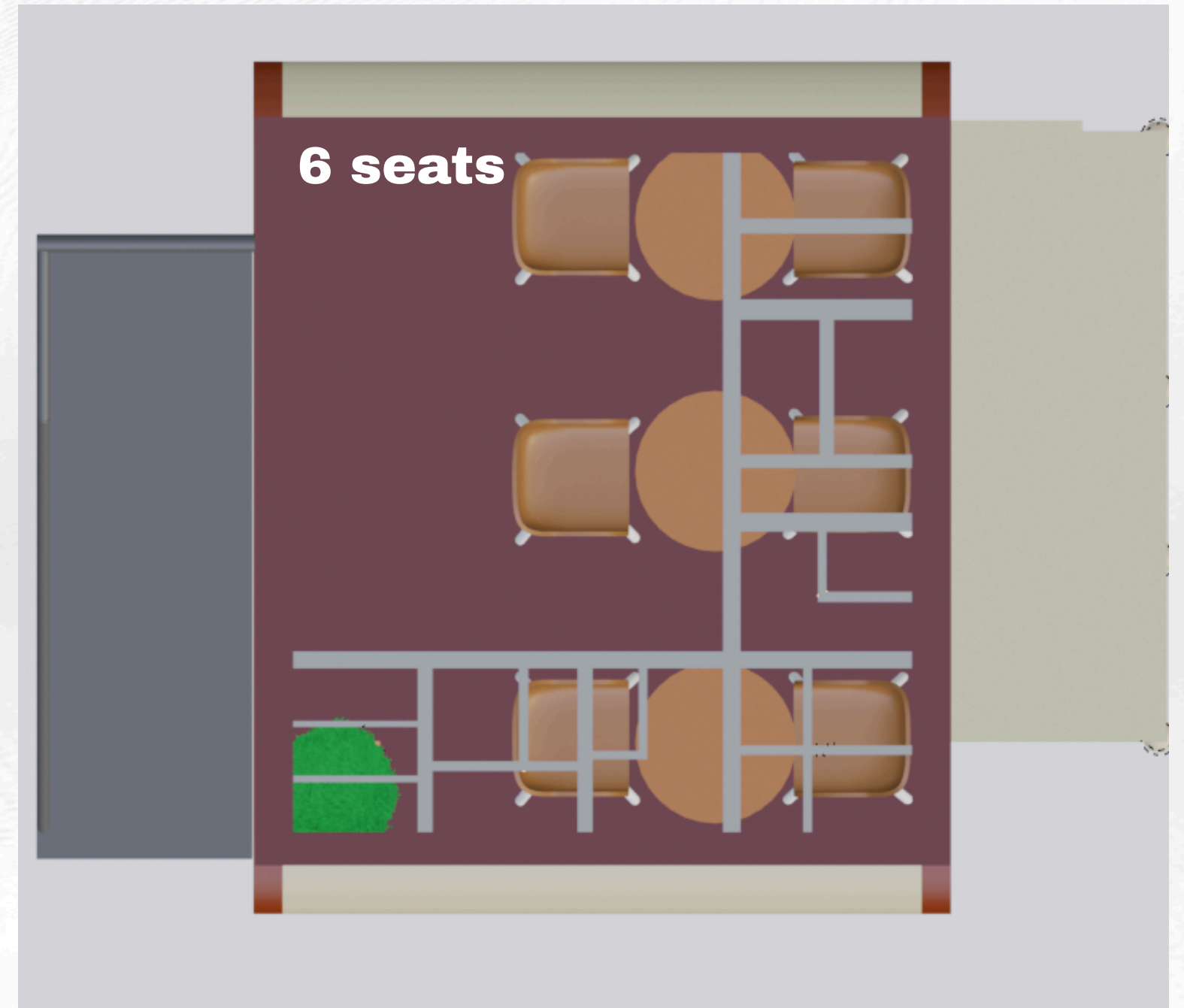
---



# PLAN



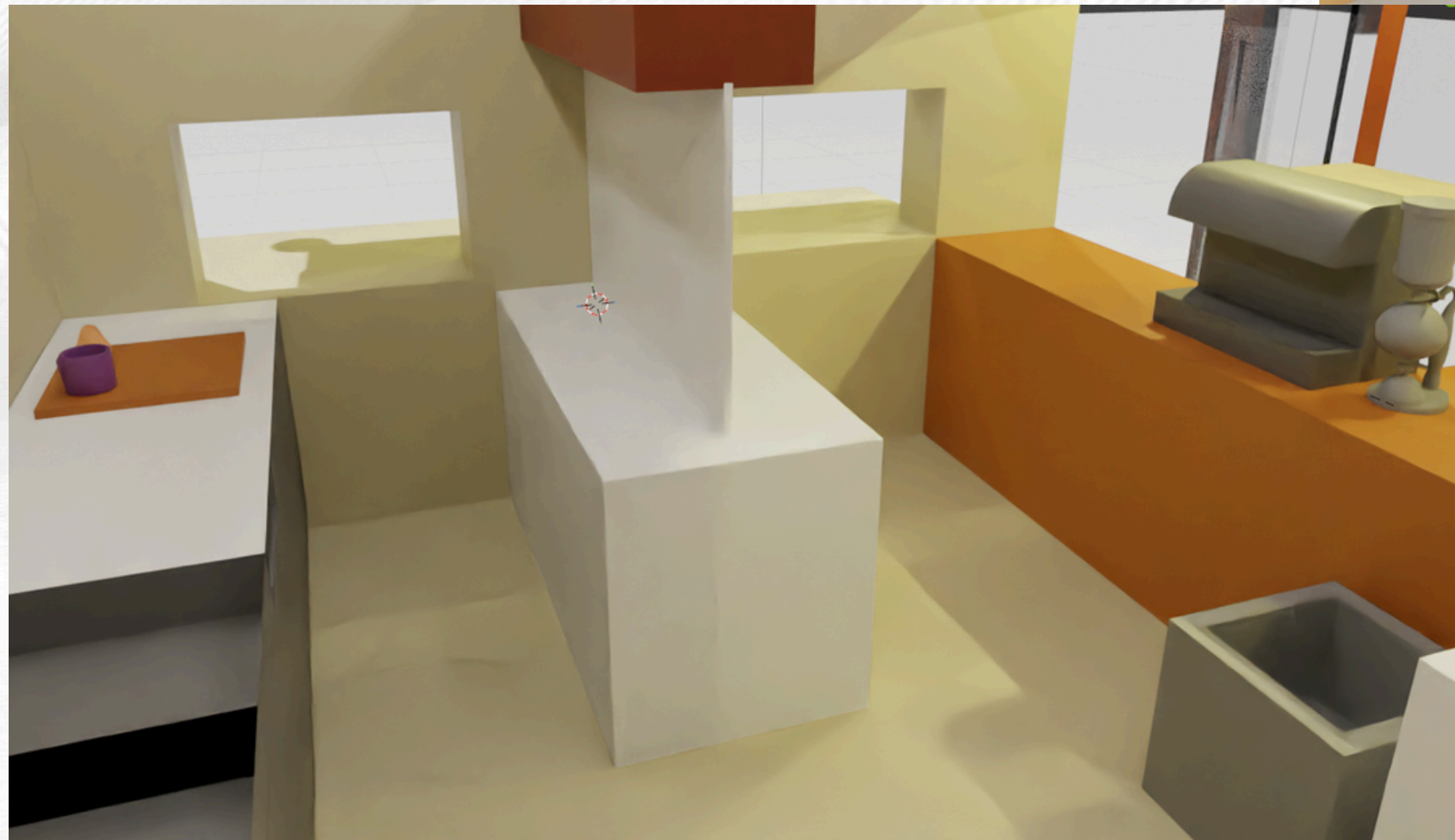
**1st floor**



**2nd floor(rooftop)**

# INTERIOR

Interior focuses on calm lighting, soft materials, and minimal distractions.



# ROOFTOP

A small rooftop space designed for fresh air studying and quiet reflection.



# DESIGN PRINCIPLES

---

- Calm atmosphere
  - Minimal noise
  - Natural light
  - Soft materials
  - Small-scale intimacy
-

# HOW PEOPLE USE THE SPACE

---

- Students come after school
  - Stay 1–2 hours
  - Study or work in silence
  - Drink tea in a calm environment
-

# CONCLUSION

---

Tea Spot rethinks a tea house as a learning-friendly micro-space that supports focus and well-being for students.