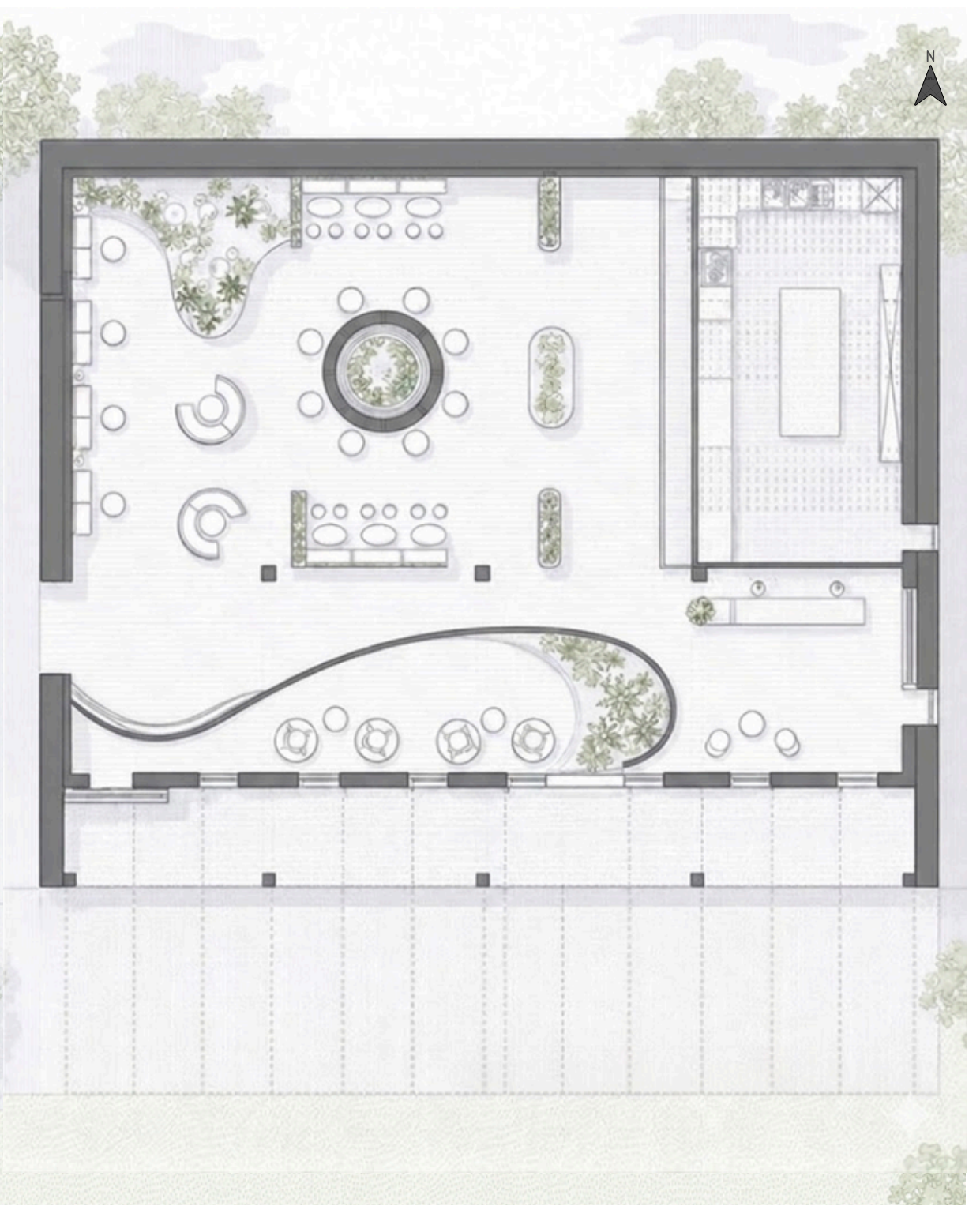


# RE:HOUSE

## Dining Hall

No.3



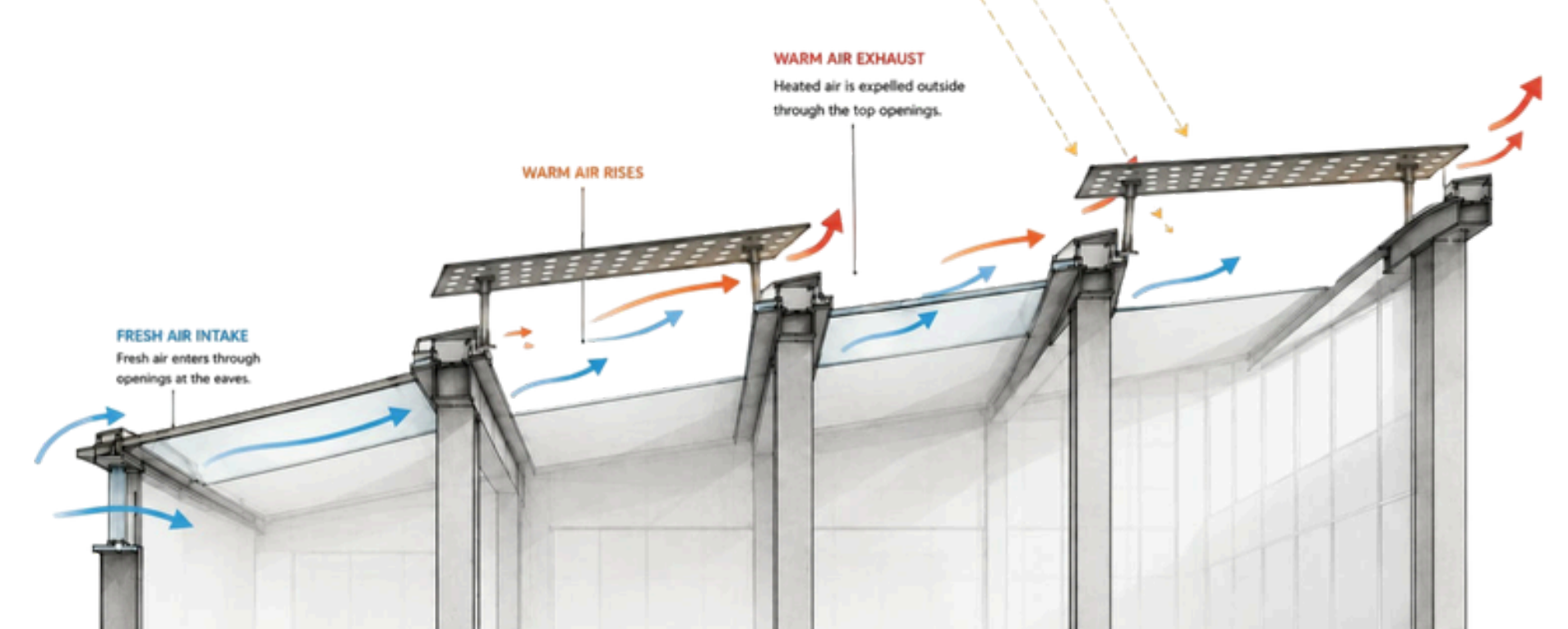
### CONCEPT

A pause in a memory.

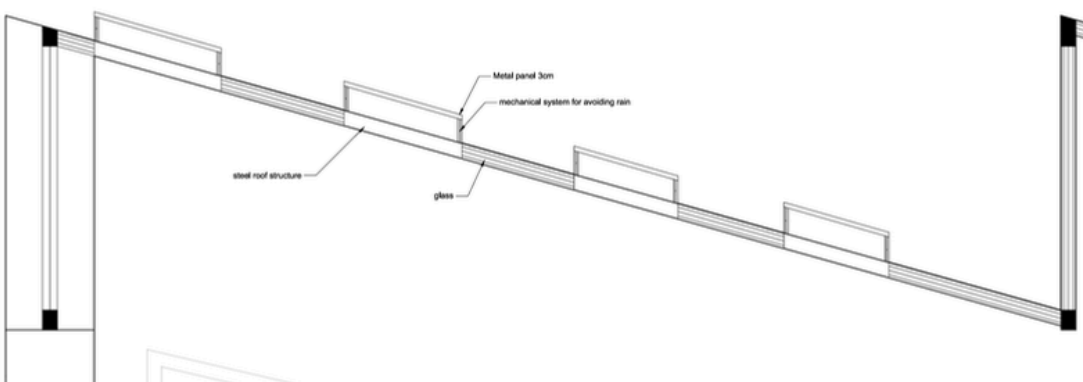
The space carries the memories of Cyprus's industrial heritage while bringing the healing spirit of the olive into its fabric. Stone and metal structures remind us of the past, while light, green spaces, and olive trees give visitors calm and peace. This combination makes the space both a pause in collective memory and a healing place for human experience.

### PASSIVE STRATEGIES

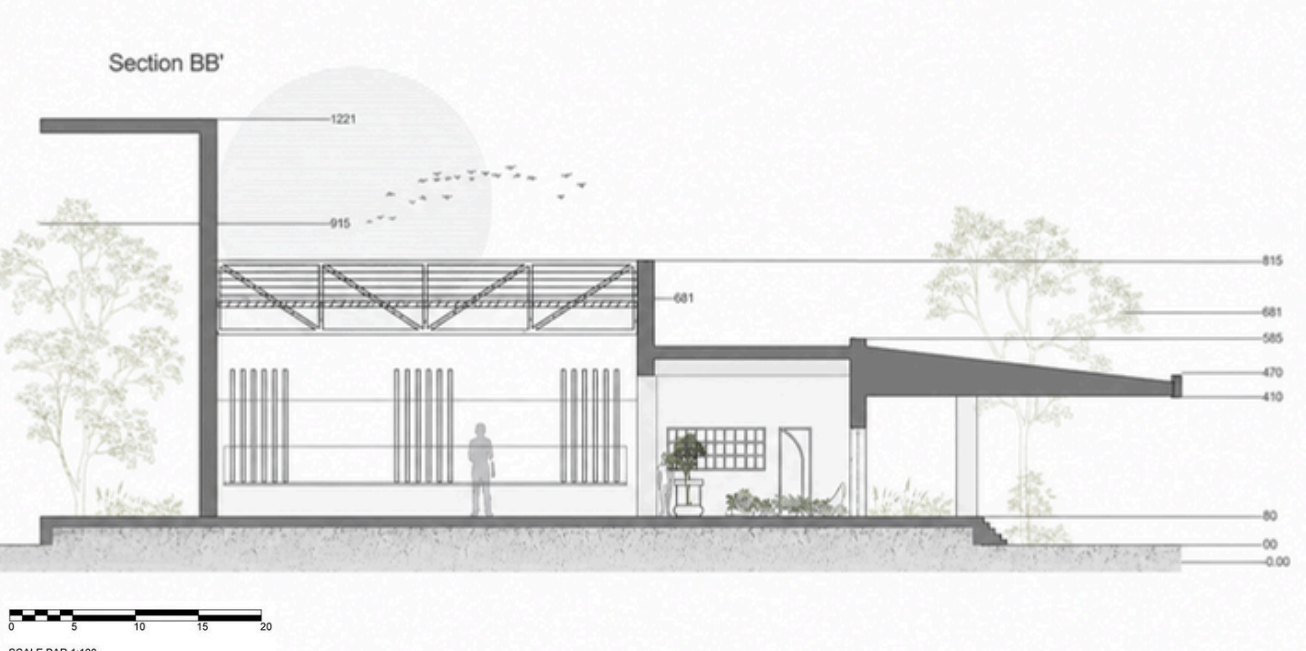
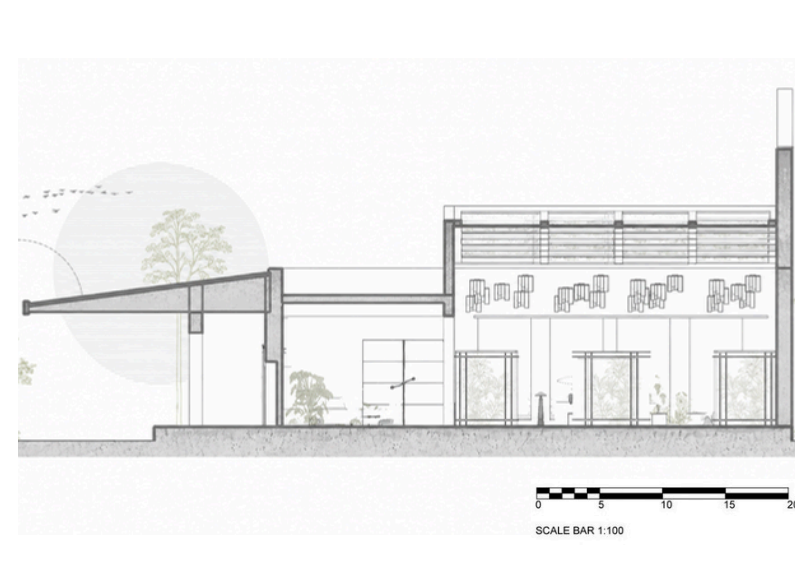
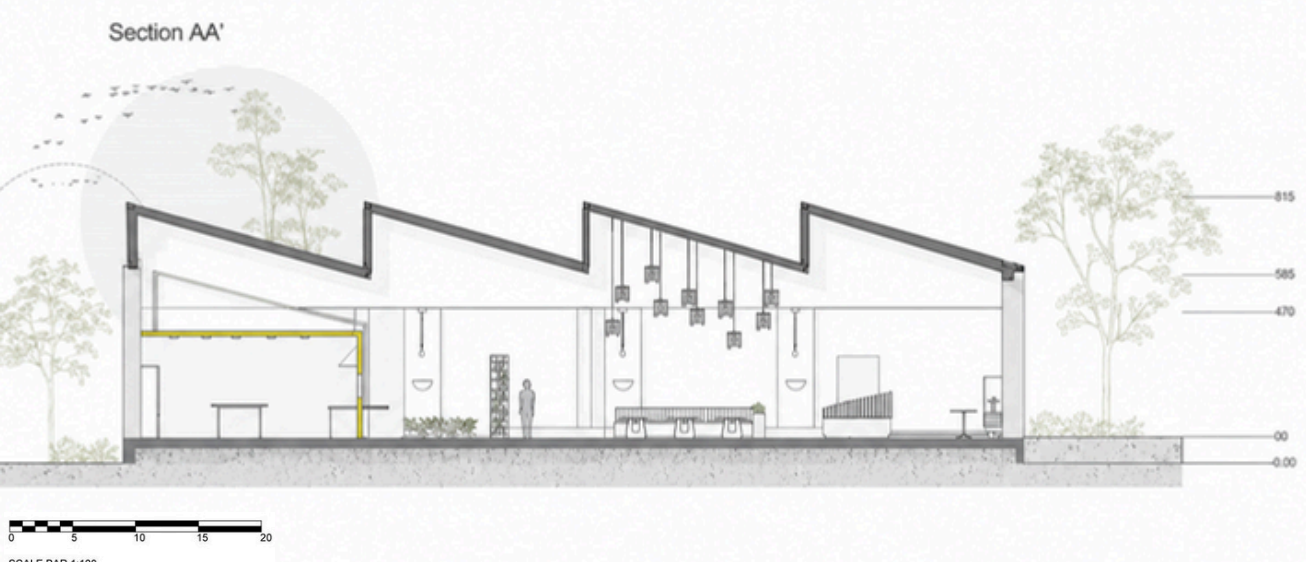
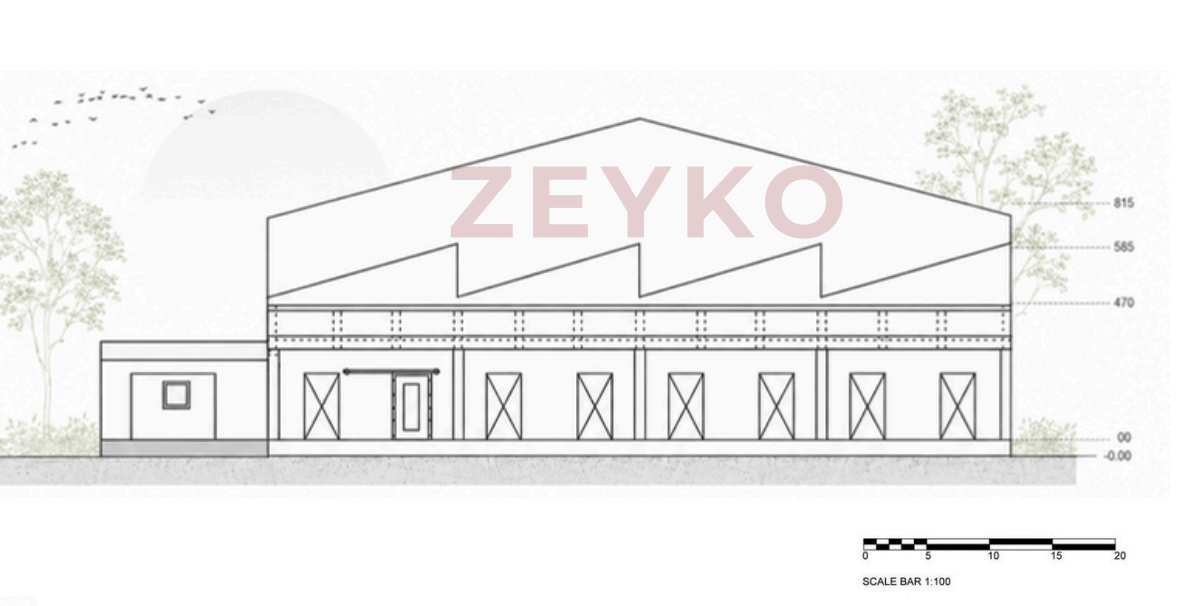
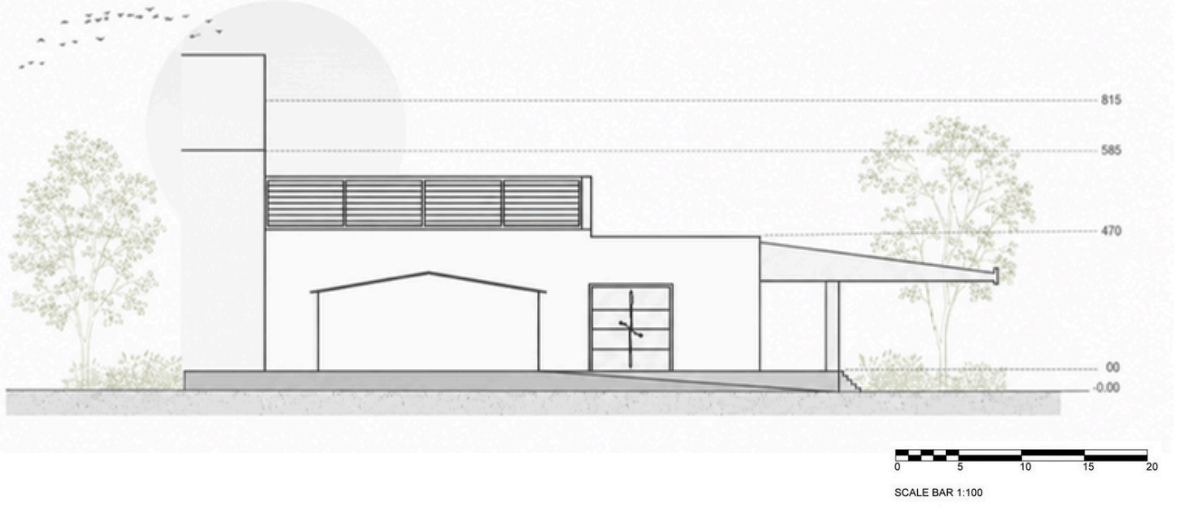
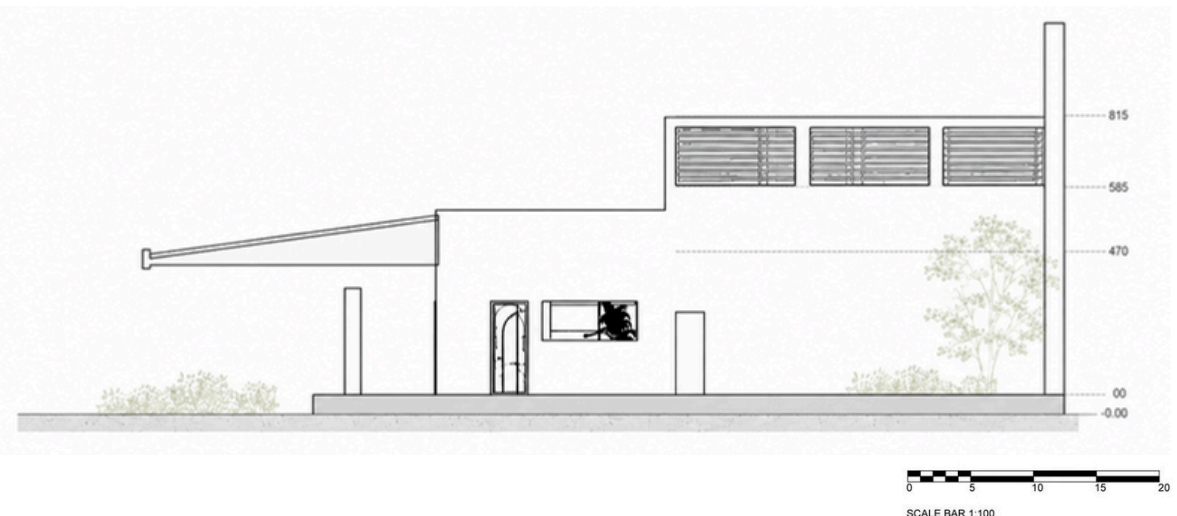
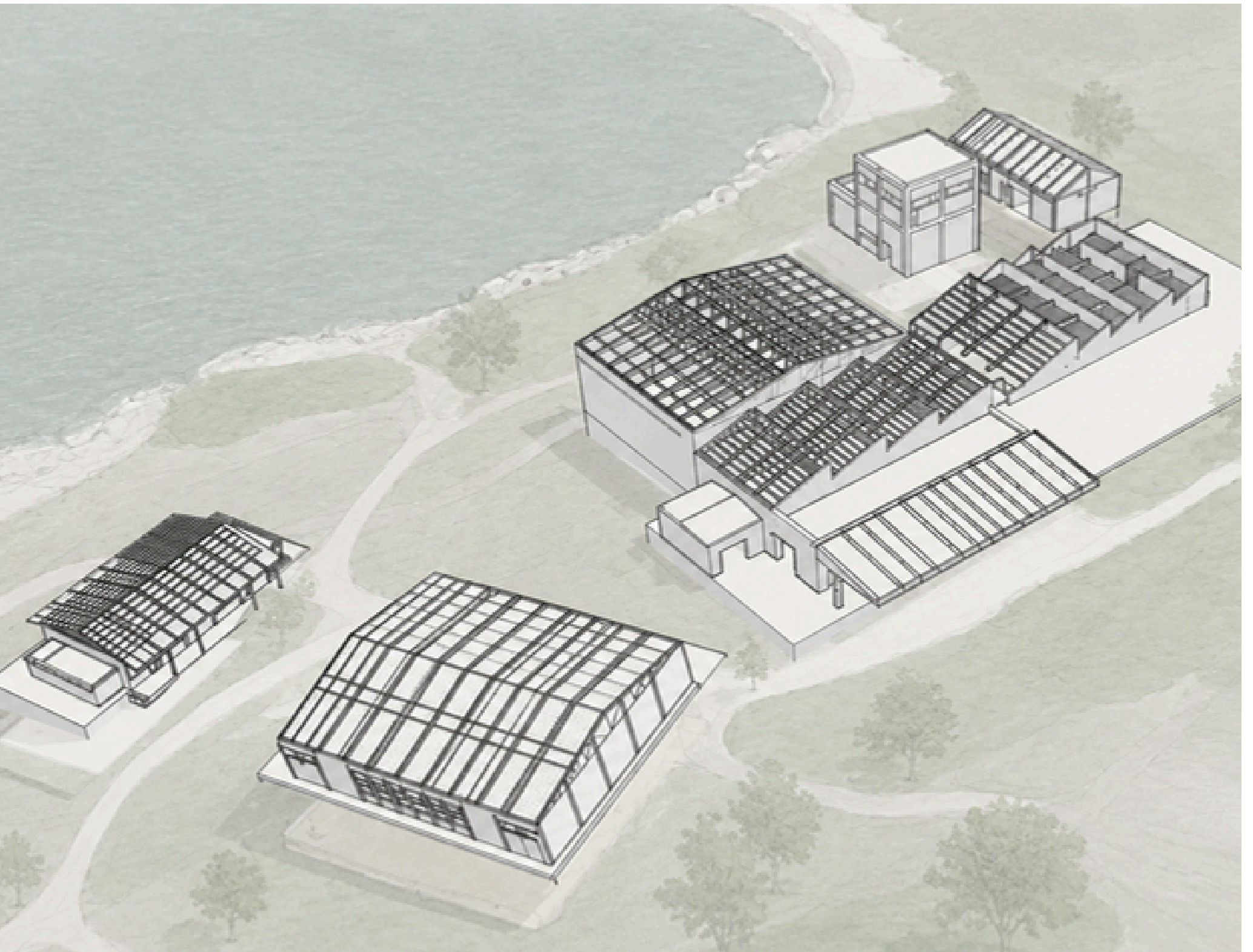
#### ROOF STRATEGY / BUILDING 3



Glass surfaces allow daylight into the interior, while perforated metal panels positioned above filter solar radiation, reduce heat gain, and create a cavity that generates a stack effect, providing natural ventilation.



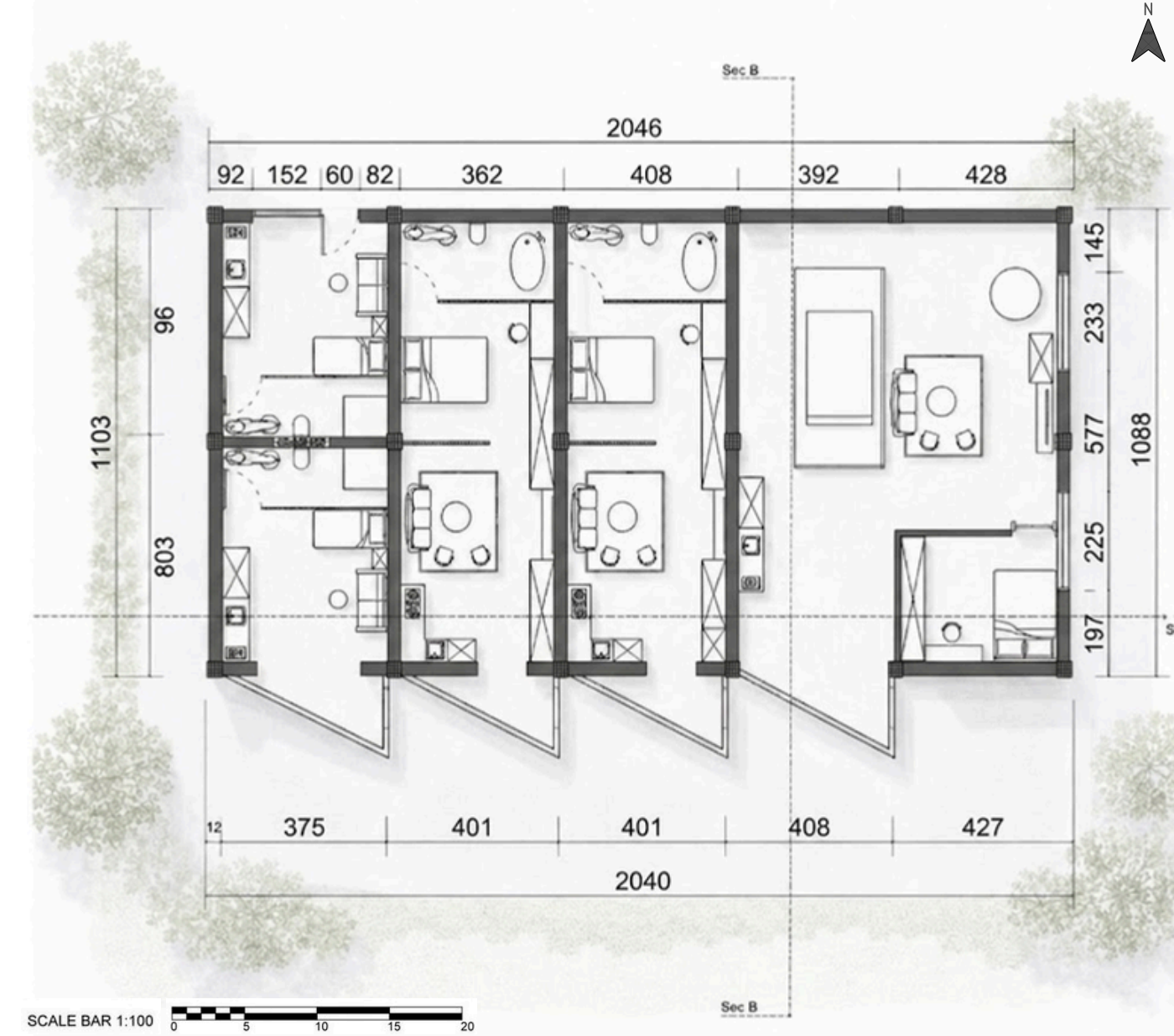
- SOLAR CONTROL**  
Perforated metal panels block direct sunlight, reducing indoor heat gain.
- THERMAL BUFFER**  
The air layer formed between the metal panel and the glass carries warm air upward.
- NATURAL VENTILATION**  
Fresh air enters from the lower levels and exits through upper openings, creating continuous airflow.
- RAIN PROTECTION**  
Automatic vertical sliding panels close during rainfall, protecting the interior space.



# RE:HOUSE

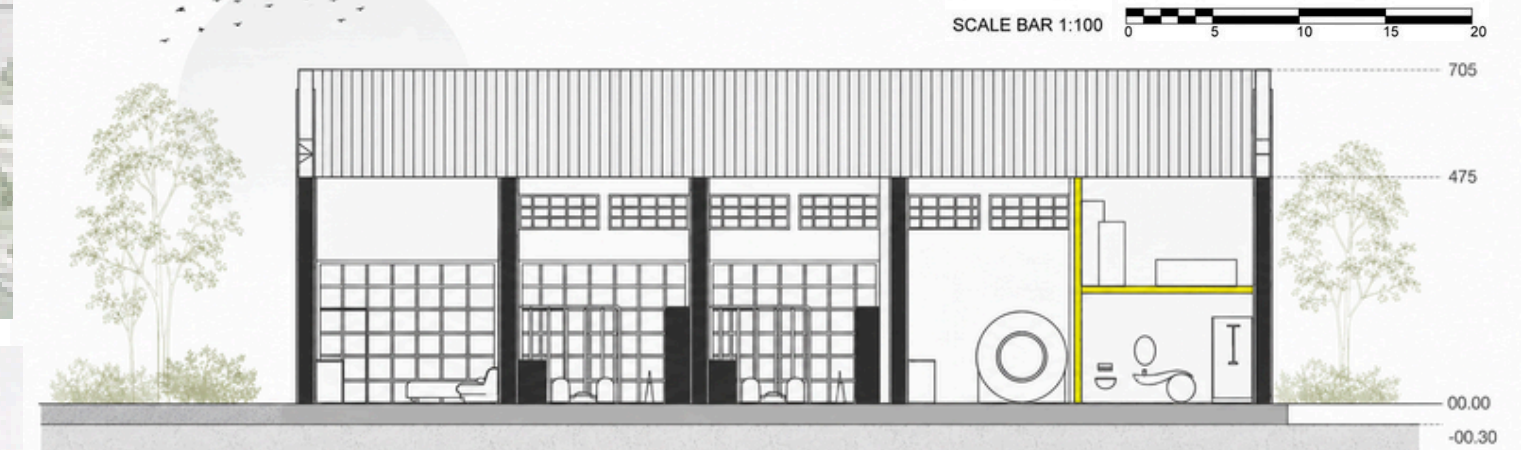
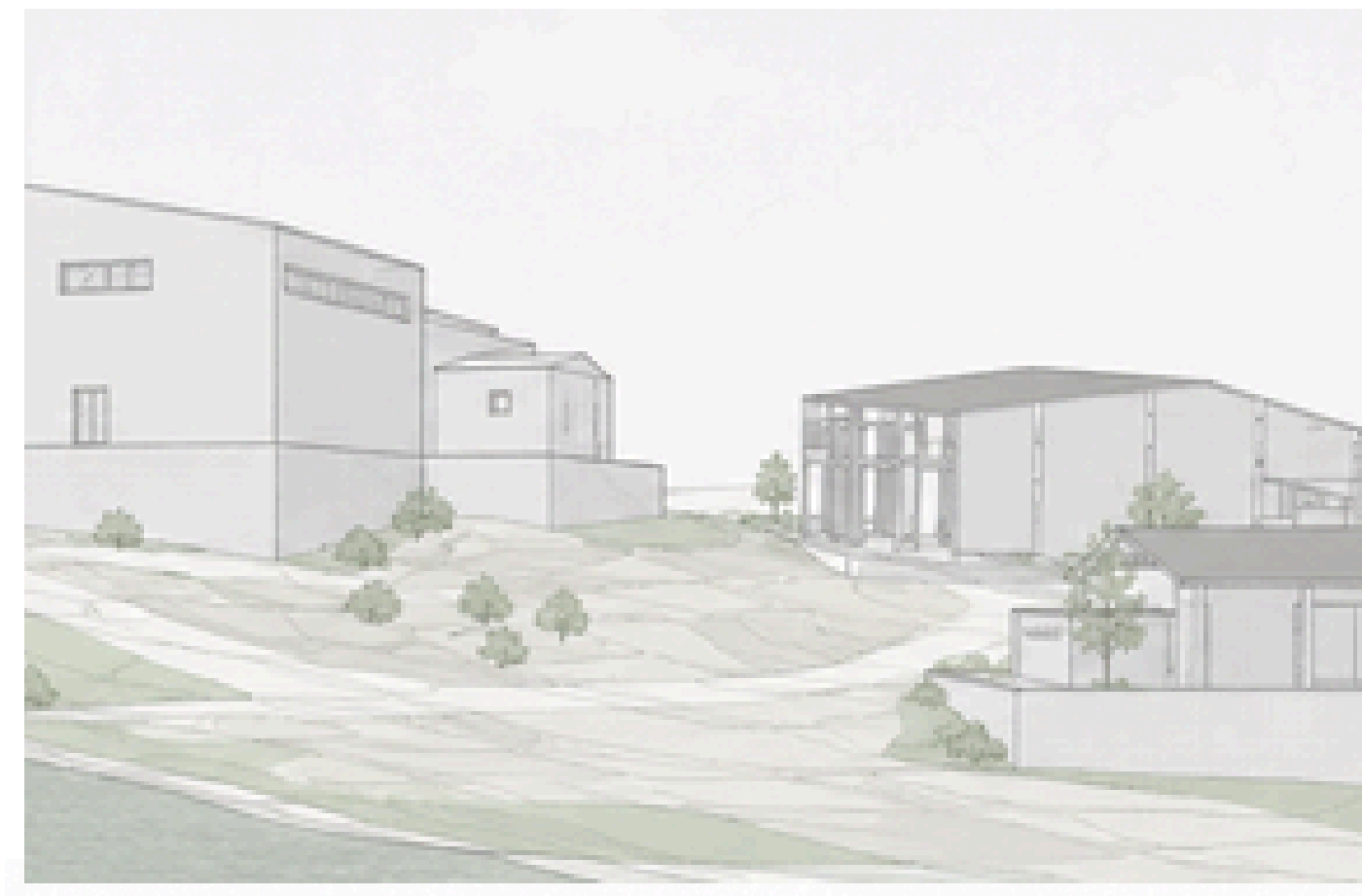
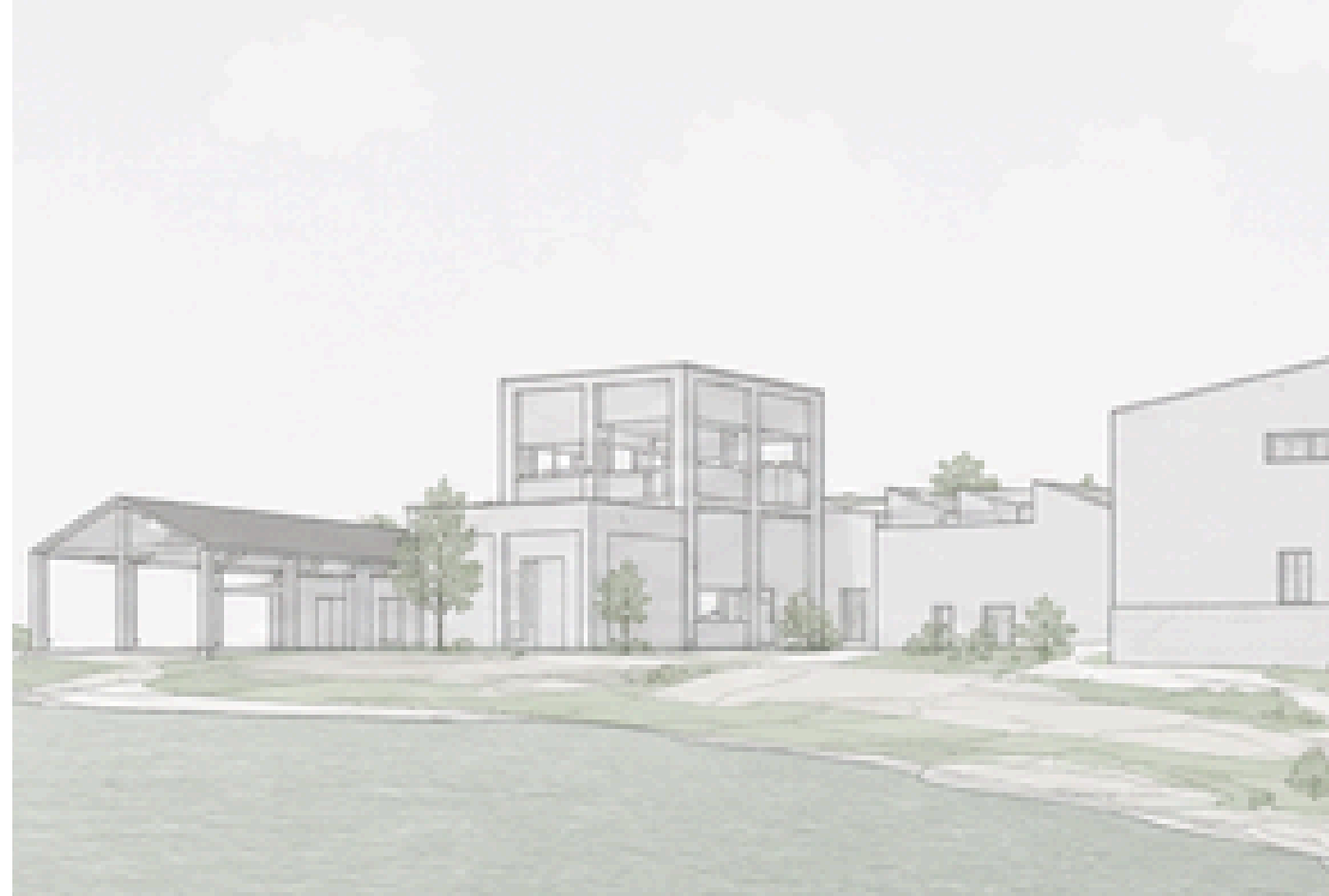
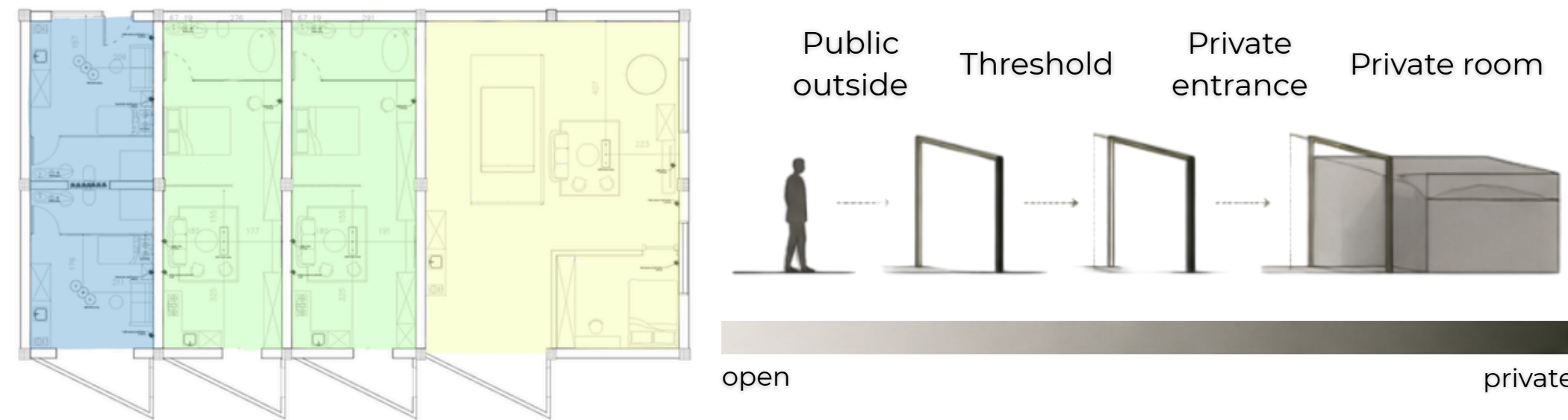
## Suit Rooms

No.7

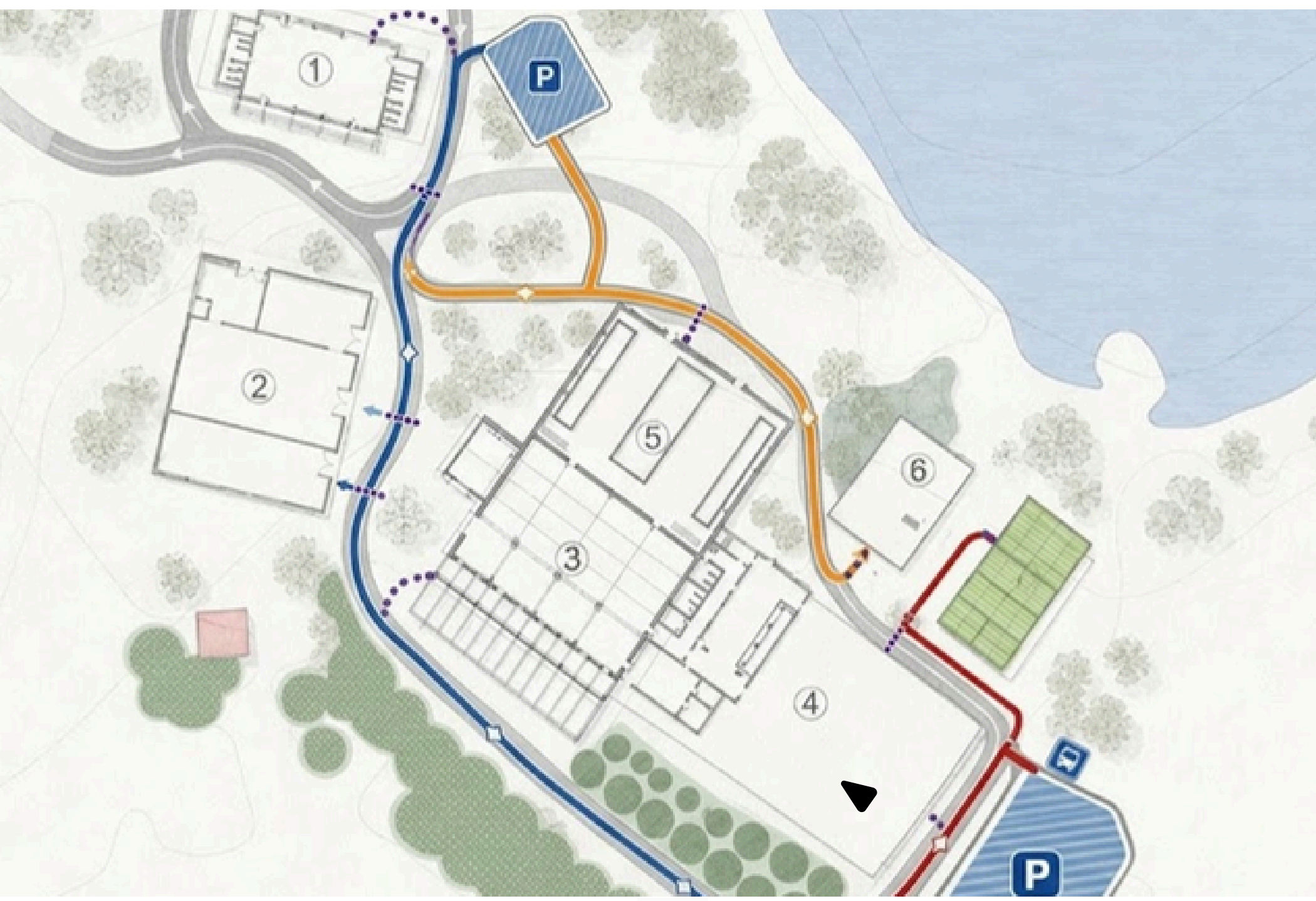


### SUIT ROOMS- THRESHOLD & PRIVACY

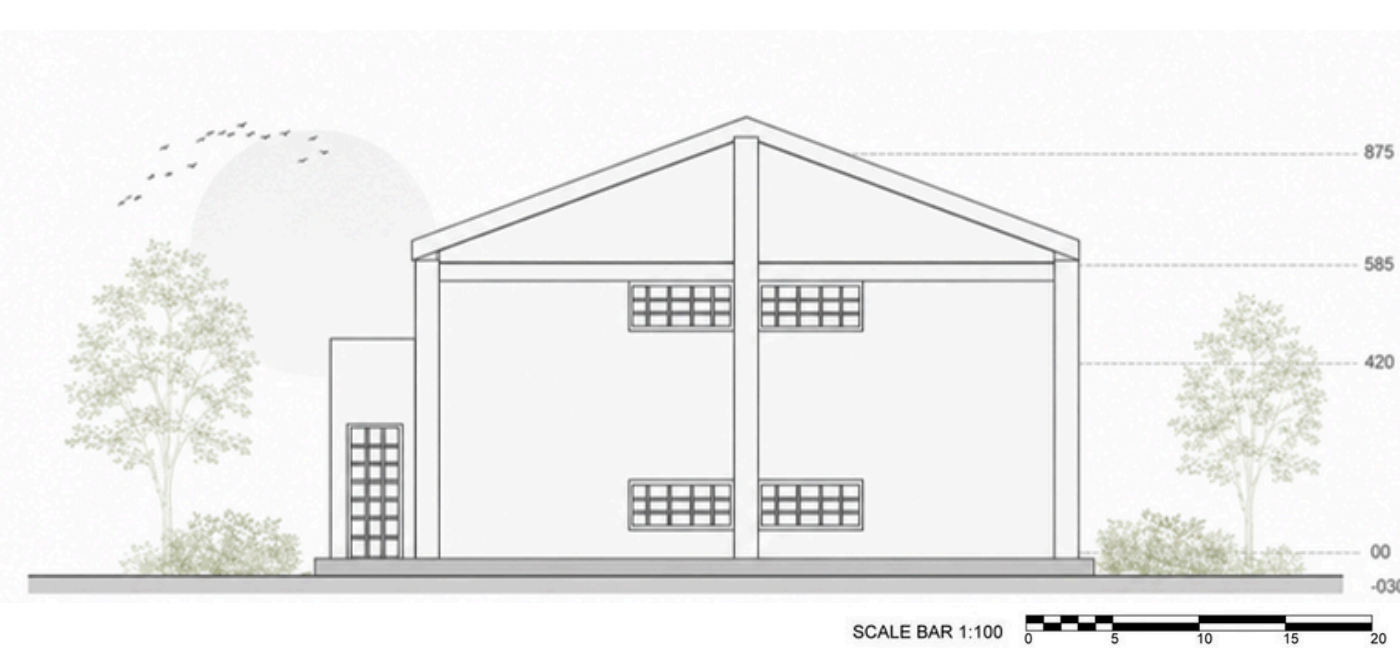
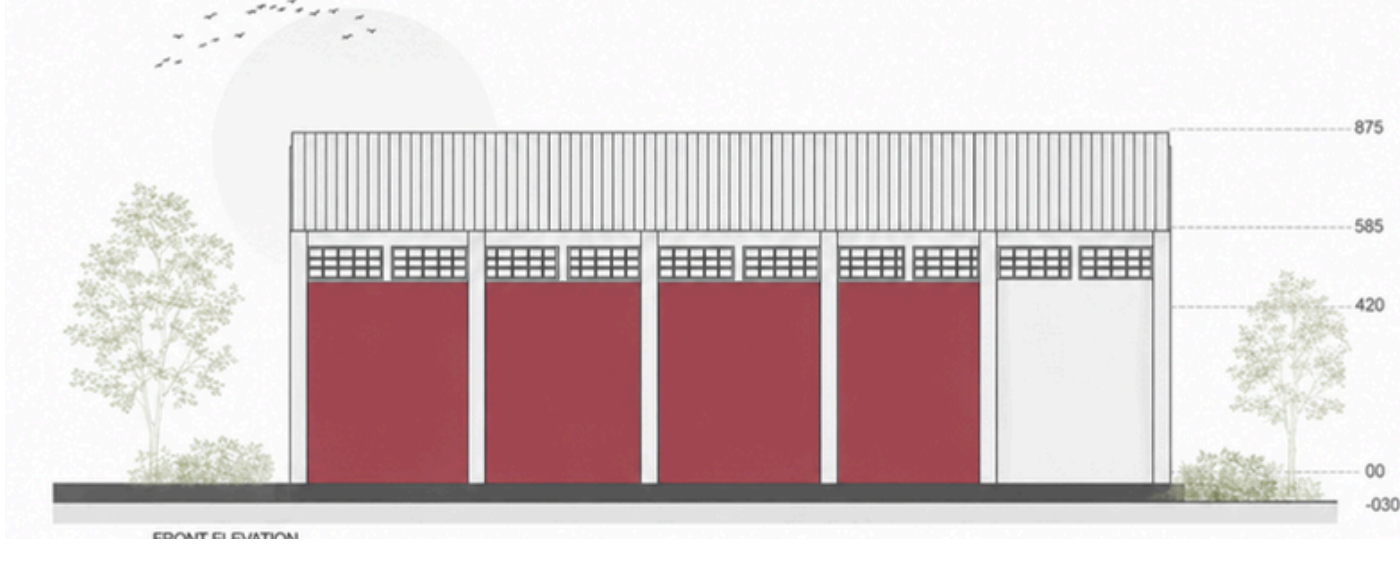
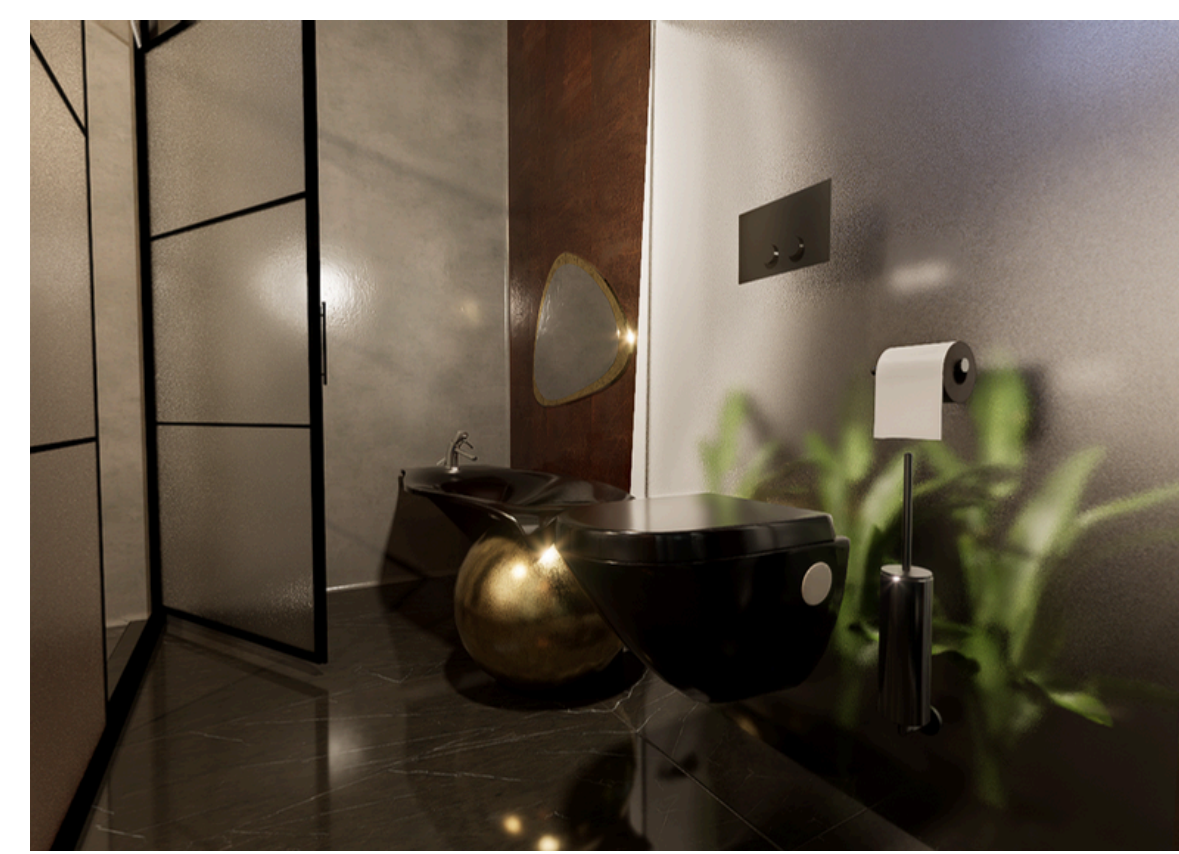
The metal additions create a layered transition from public to private. Each entrance is defined, filtered and protected.

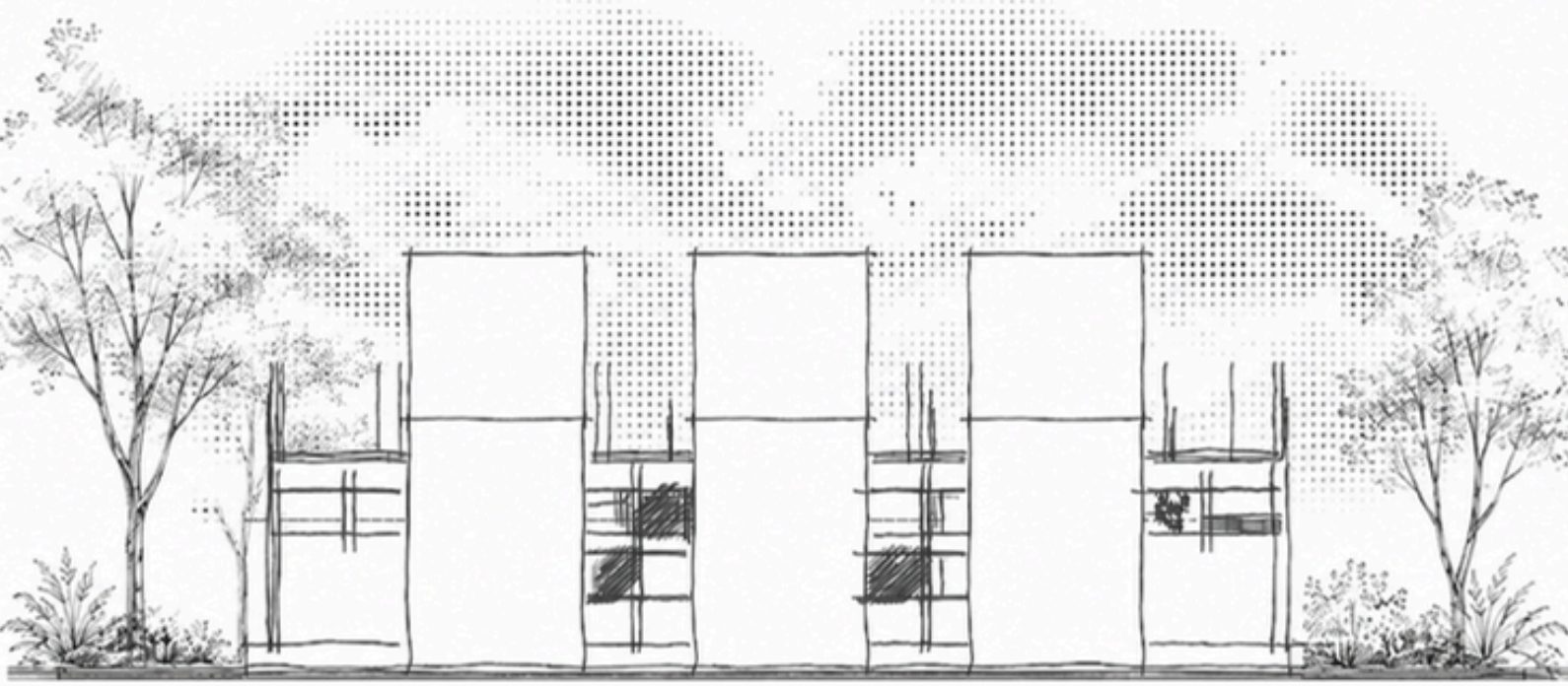
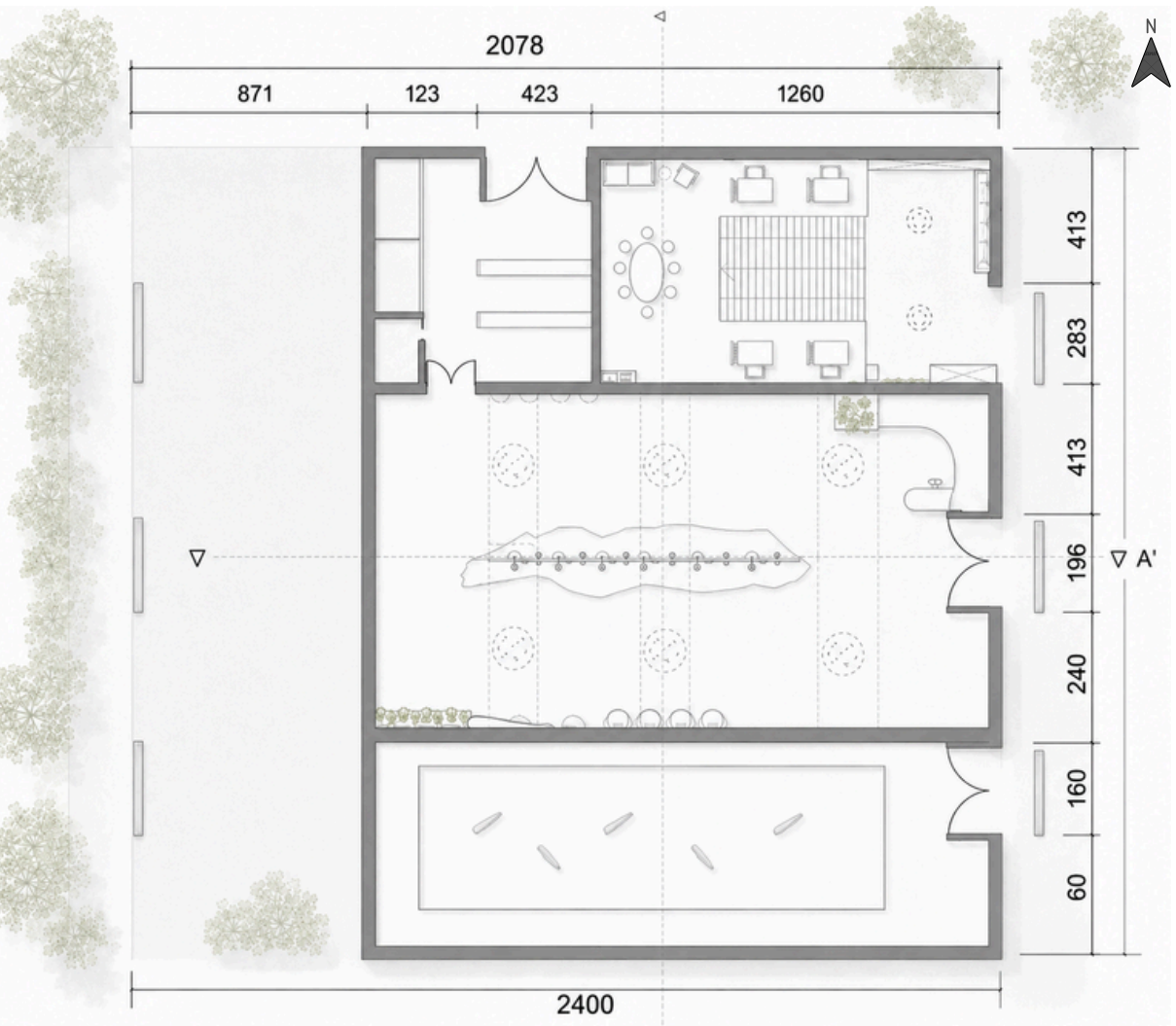


### HOTEL CIRCULATION MAP



- SECONDARY ROAD
- MAIN ROAD
- P CAR PARK
- ▲ MAIN ENTRANCE
- ACCESS TO SUITS
- CROSSWALK
- T SHUTTLE

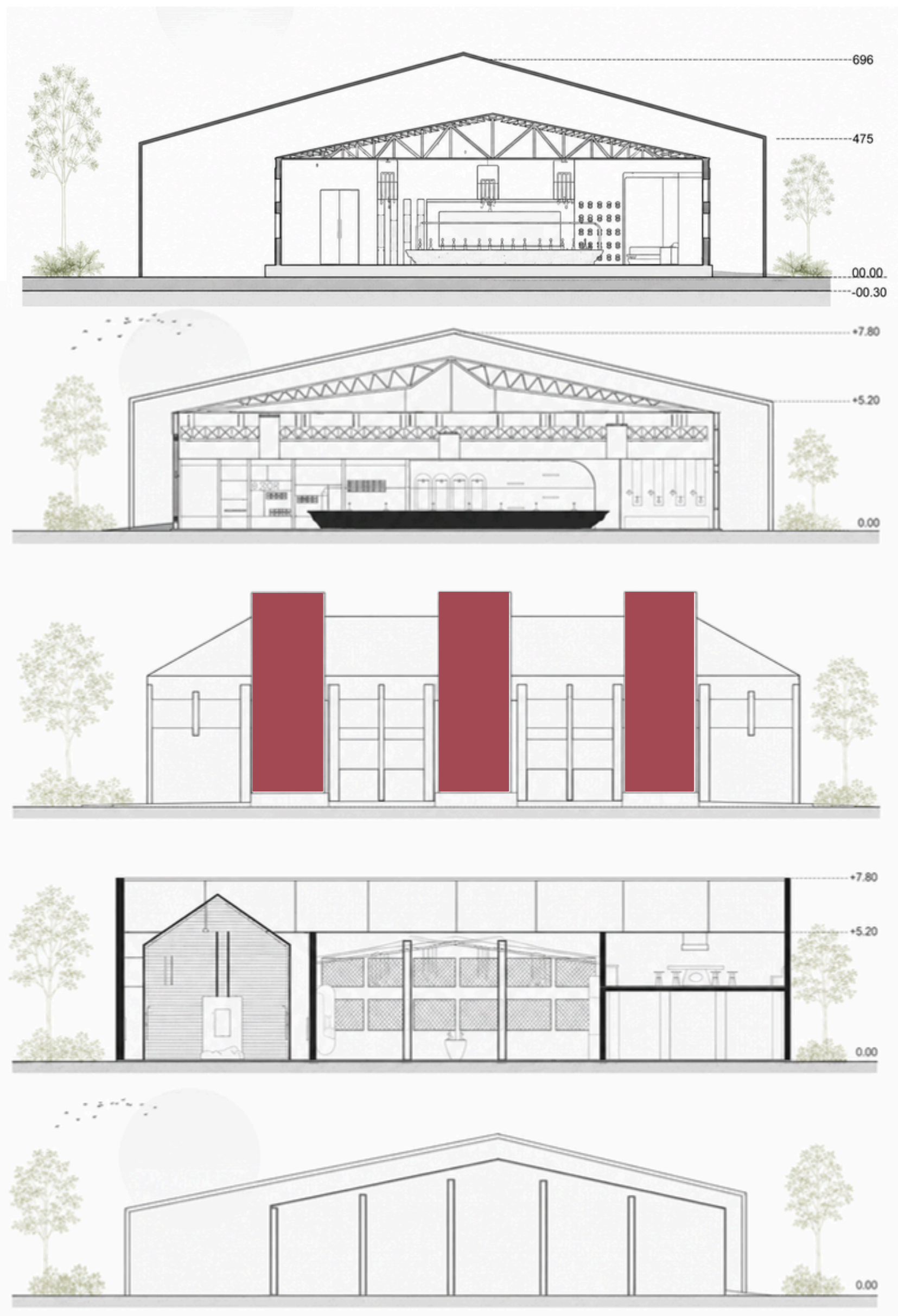
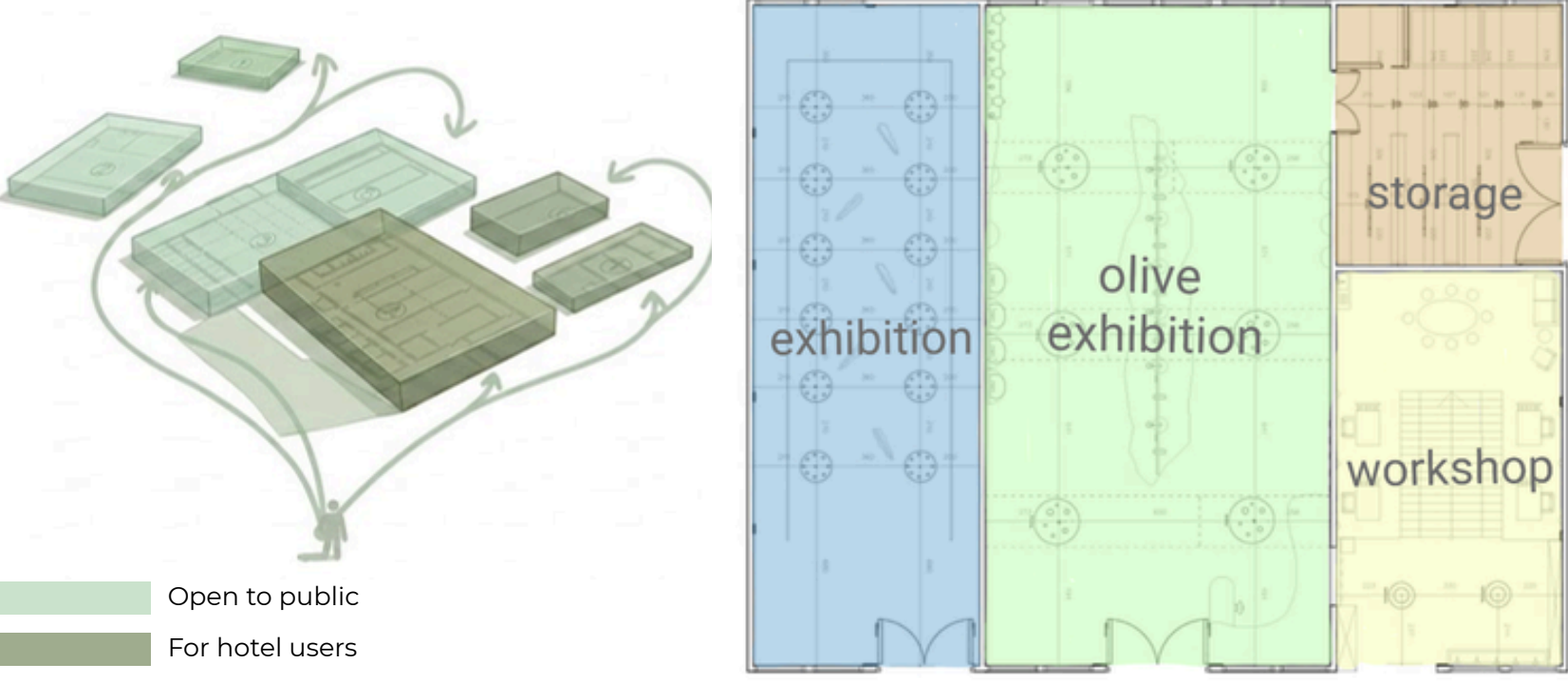




**CONCEPT**

**A pause in a memory.**

The exhibition is designed for continuous flow. You enter from one side, experience the sequence of spaces and exit from other side. The loop can be repeated through multiple entrances. The metal structure extends to the back, following the exiting roof profile and create an open but defined outdoor space.

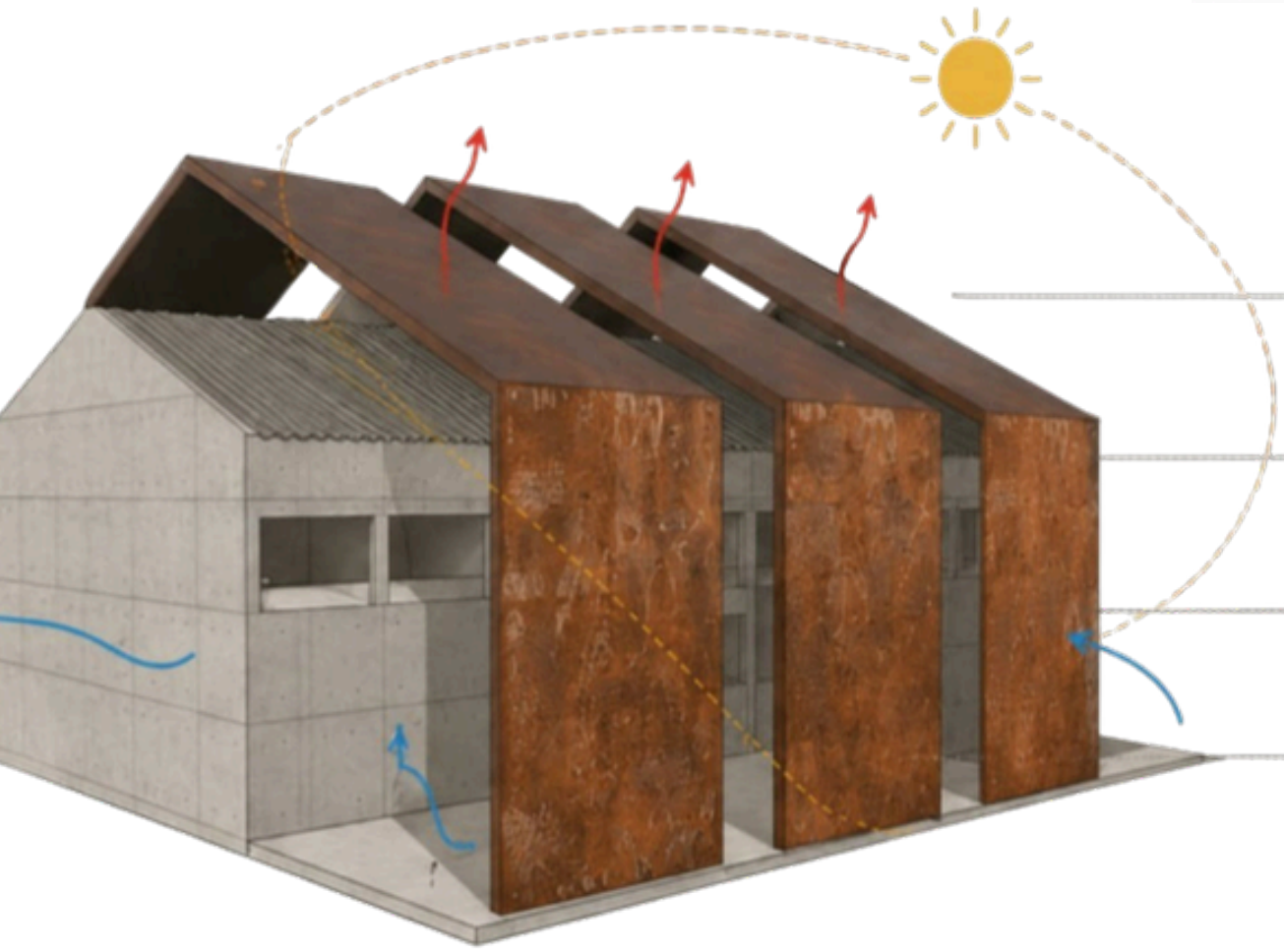


**MATERIAL DETAIL**



**SUMMER STRATEGY**

Hot air is expelled through the stack effect, preventing excessive overheating of the interior. Natural airflow helps maintain a cool and comfortable indoor environment.



- Summer sun control (perforated panel shading)
- Natural ventilation (chimney effect)
- Thermal mass (exposed concrete)
- Winter sun gain (low-angle sunlight penetrates deep into the space)

