



FAKULTAS
HUMANIORA
DAN INDUSTRI
KREATIF



NAMA : RYO VALENTINO
NRP : E11220025
INTERIOR DESIGN AND STYLING



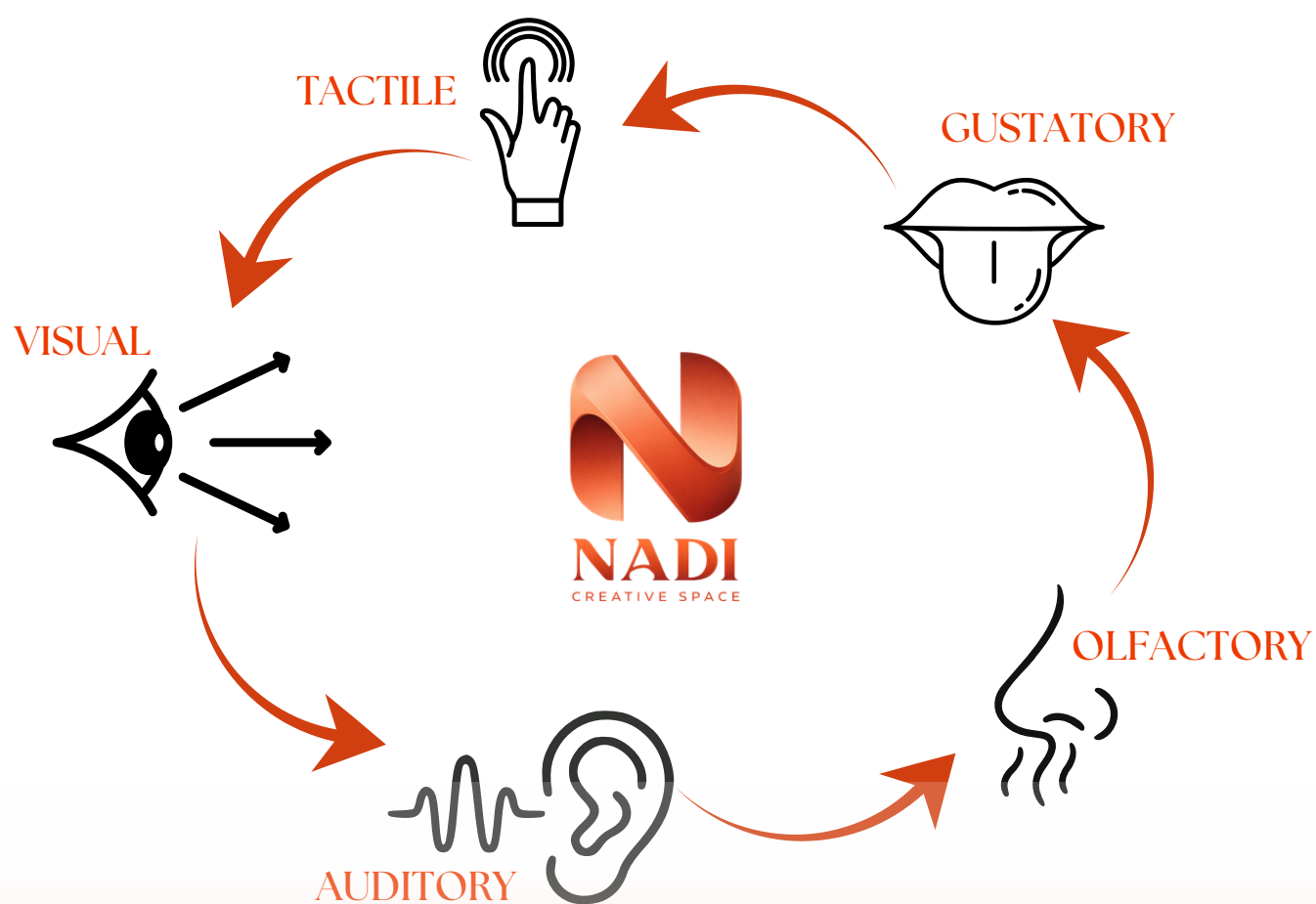
BACKGROUND

Located in the historic corridor of Tunjungan Street, one of Surabaya's most vibrant urban destinations, Nadi Creative Space is envisioned as a creative hub that responds to the growing need for meaningful and immersive public spaces within the city center. Amidst the fast-paced urban environment dominated by visual stimulation and commercial activities, the project seeks to reintroduce a deeper human connection to space through the principles of Multisensory Design.

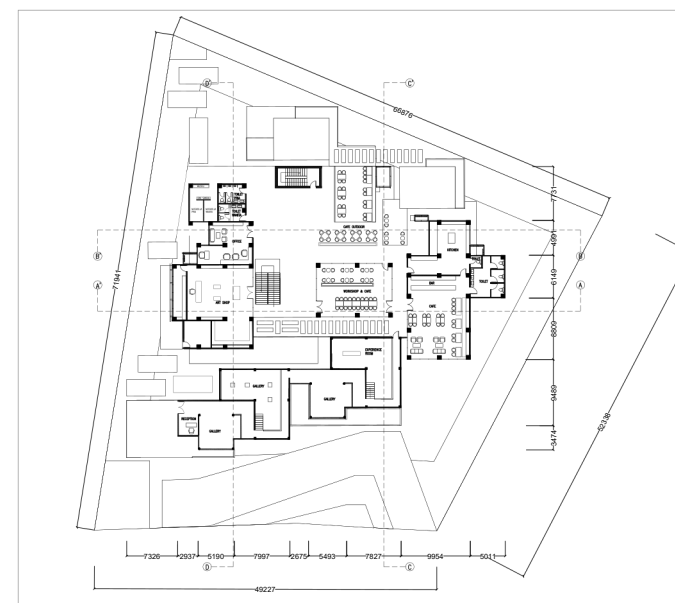
AKSARA RASA

Nurturing Inspiration Through Tangible Sensory Experiences.

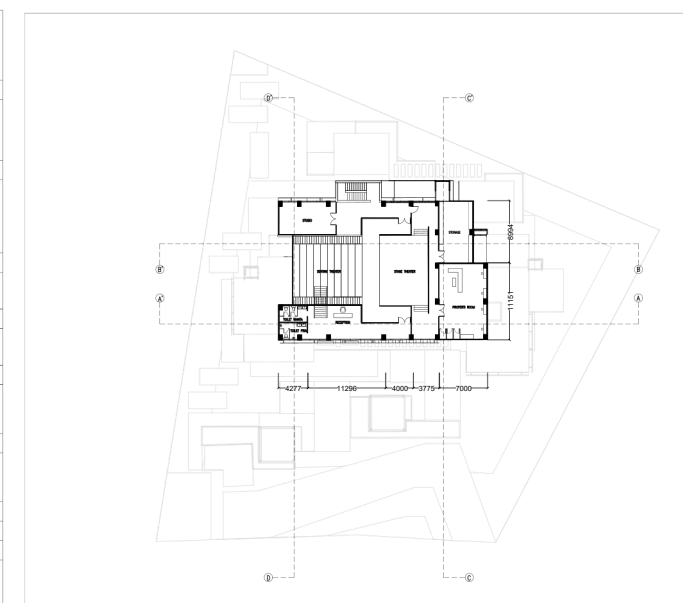
The design of Nadi Creative Space on Tunjungan Street adopts the concept of Aksara Rasa, integrating the functions of a gallery, workshop, theater, art shop, and cafe into a multisensory spatial hierarchy. Through a carefully orchestrated circulation sequence, each function is interconnected to create a dynamic and interactive spatial experience, where sensory stimulation is thoughtfully curated to foster a vibrant urban creative ecosystem. This approach ensures that every programmatic transition is not only spatially functional but also serves as a sensory narrative that strengthens visitors' perception, memory, and emotional connection to the space amidst the modern urban landscape of Surabaya.



LAYOUT



PROJECT	NADI CREATIVE SPACE
LOCATION	Surabaya
APPROVED BY	
DESIGNED BY	RYO VALENTINO
TITLE	LAYOUT LANTAI 1
SCALE	1:200
PAPER	A3
DATE	JUNE 2026
NOTES	



PROJECT	NADI CREATIVE SPACE
LOCATION	Surabaya
APPROVED BY	
DESIGNED BY	RYO VALENTINO
TITLE	LAYOUT LANTAI 2
SCALE	1:200
PAPER	A3
DATE	JUNE 2026
NOTES	

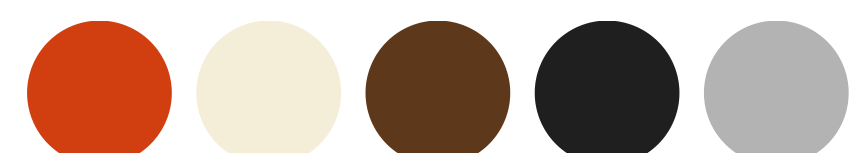
SECTION



THE IMPLEMENTATION OF MULTISENSORY DESIGN

Through the integration of Visual, Auditory, Tactile, Gustatory, and Olfactory Experiences, Nadi Creative Space becomes more than a venue for creative activities; it offers an immersive and memorable spatial experience. Each sensory dimension contributes to the narrative of Aksara Rasa, where inspiration emerges through direct engagement with space, culture, and the creative community of Tunjungan Street.

COLOR PALETTE



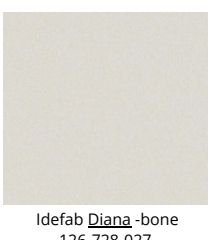


MATERIAL SCHEME & FINISH

**VENUS
TILES**
MADANA



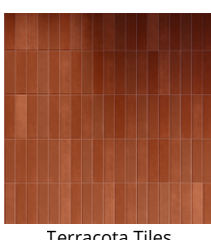
Idefab Jasmina IC - Black
H017-004-040



Idefab Diana - bone
126-728-027



Idefab Sparta - Tangerine
2917-001-019



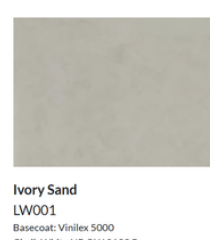
Terracota Tiles
by Madana



Venus Tiles Valentino Gress



NP YO 1232 A
Tigerstripe



Ivory Sand
LW001
Basecoat: Vinilux 5000
Chalk White NP-OW 2199 P



Tiletac Textured Paint NP YO
1232 A TIGER STRIPE



AICA Jcube Collection AK-14095-
CY33 Dark Mode Walnut

AICA
**NIPPON
PAINT**
Idefab

RENDERED VIEW



THEATER



ARTSHOP



WORKSHOP & CAFE



GALLERY



OUTDOOR CAFE



RECEPTION THEATER



OFFICE



INTERACTIVE AREA



PROPERTY ROOM