

# Project for a multifunctional cultural center in Aktope

## Form-Generation Concept

The architectural design of the 16,600-square-meter complex is based on advanced parametric design algorithms and principles of bionics. The building is conceived as an artificial landscape that emerges organically from the ground. Its volume forms a perfectly smooth hill—entirely eschewing stepped terraces—to achieve absolute continuity and fluidity of line. The seamless geometry of the facades creates a dynamic, monumental presence, establishing the complex as a new architectural landmark within the evolving urban environment.

## Structural and Facade Solutions

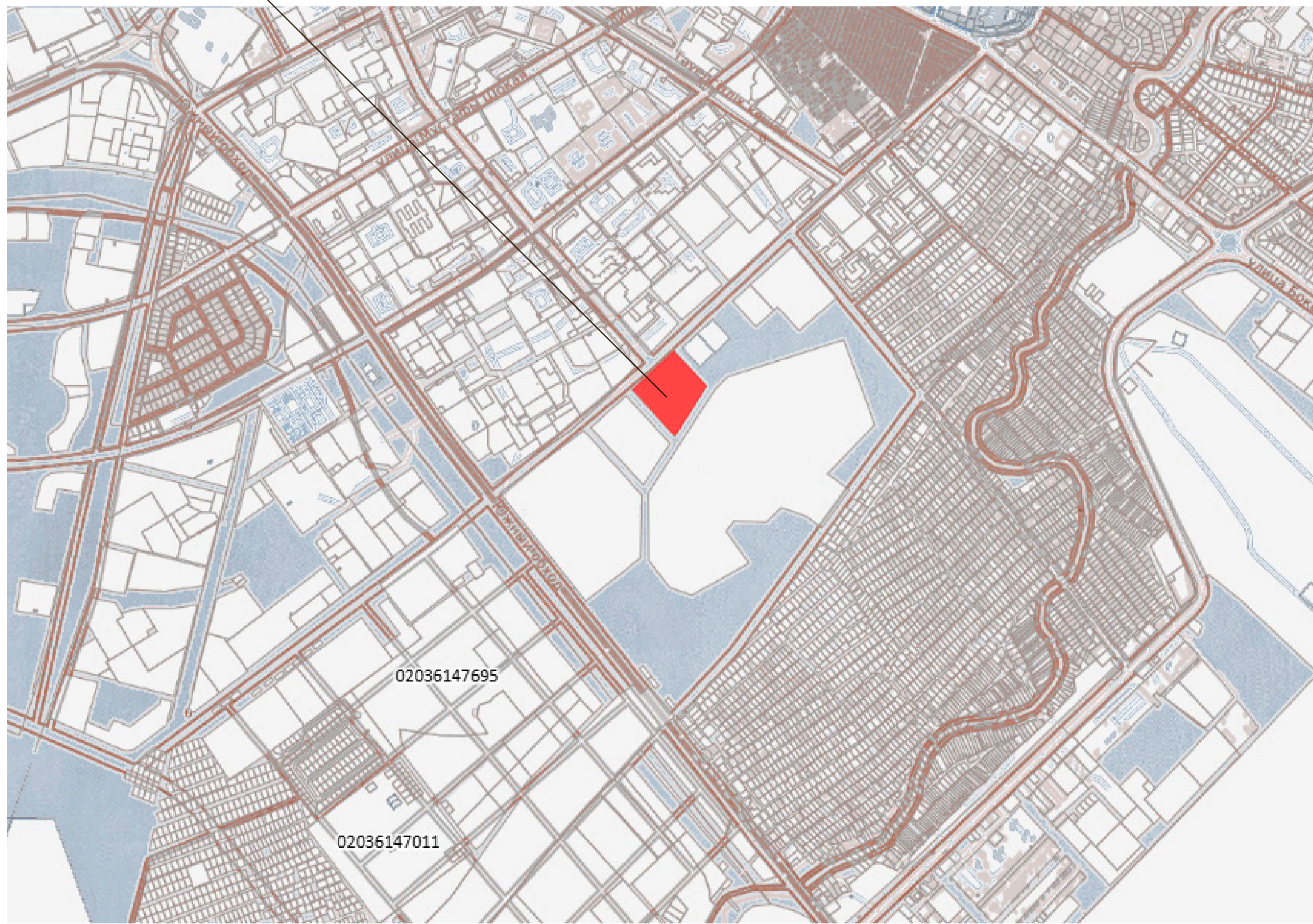
The complex's intricate spatial shell rests on a system of reinforced concrete cores and cylindrical load-bearing structures. A metal space-frame truss serves as the primary structural element for spanning the large open areas. The exterior finish consists of large-format parametric panels, each featuring unique curvature. The solid, snow-white surface creates a striking contrast with the expansive hexagonal honeycomb-style glazing, which allows natural light to flood the interior public areas.

## Spatial Organization

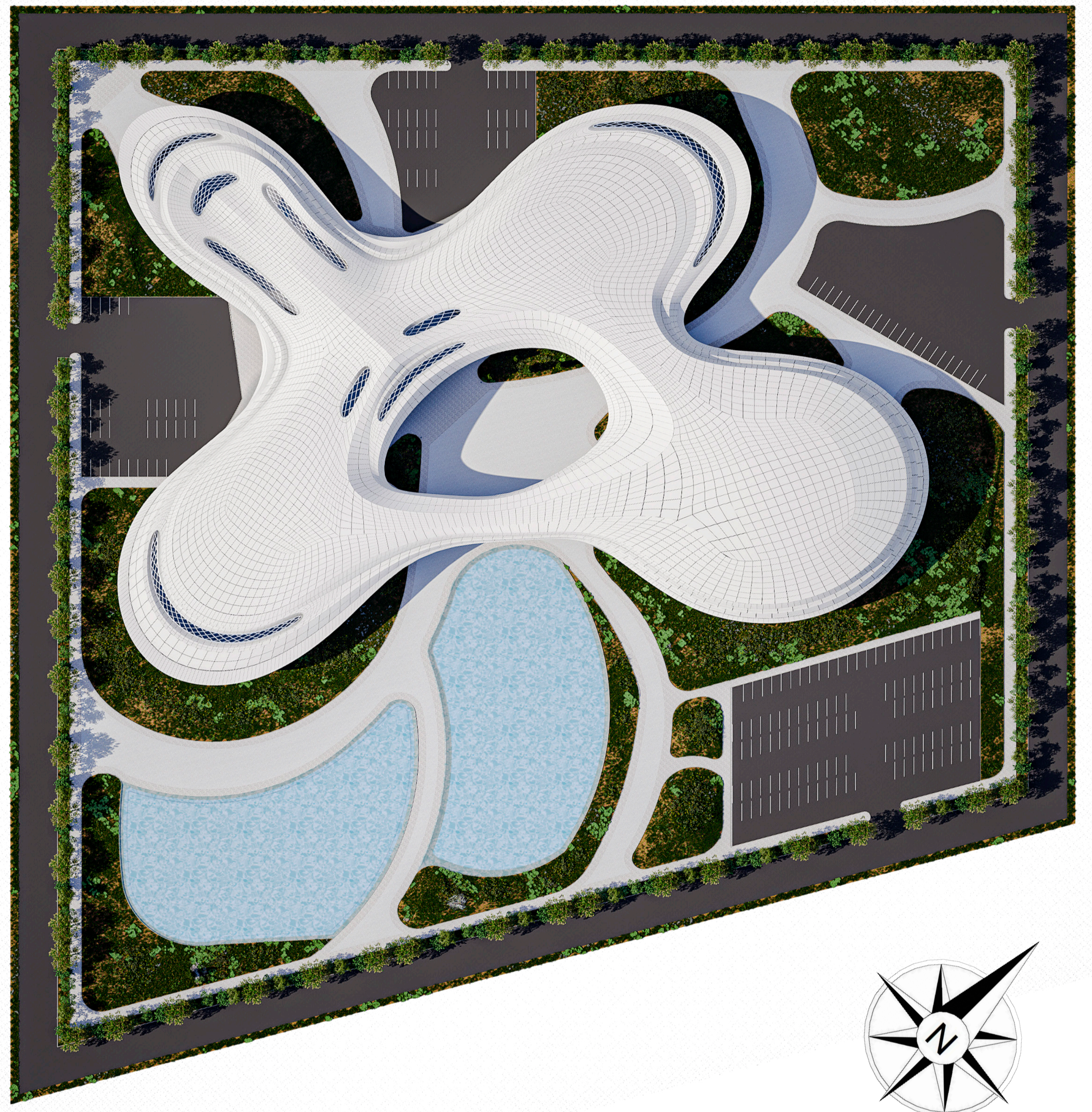
The composition is anchored by a soaring atrium that unites the center's key functions—museum and exhibition spaces, the main auditorium, educational classrooms, and the dining area. Integrating the interior spaces with the surrounding 5.7-hectare landscaped grounds blurs the boundary between indoors and outdoors, transforming the cultural center into an open, inclusive, and high-tech venue for residents and visitors alike.

Location plan

proposed site



Site plan



Concept evolution

