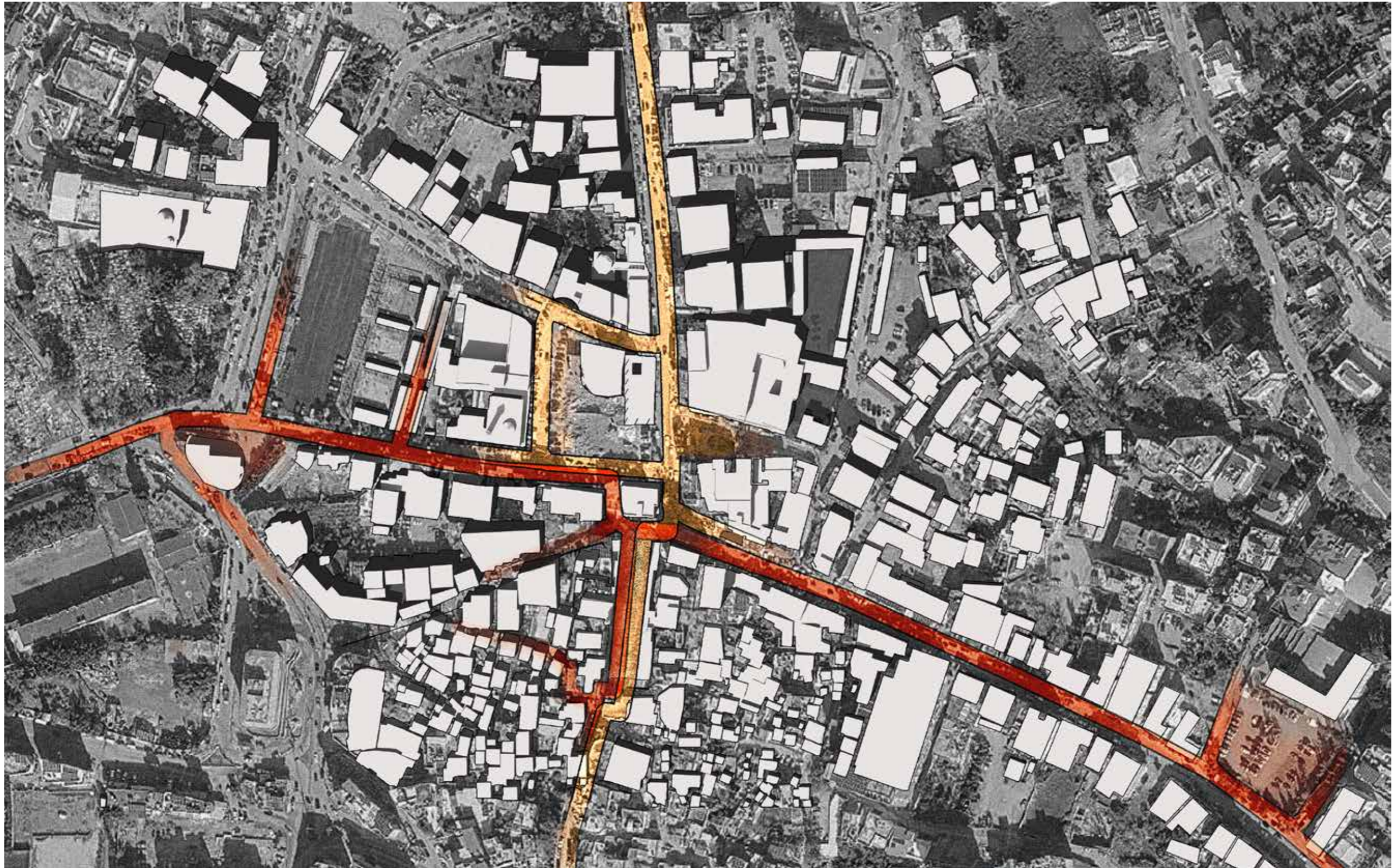


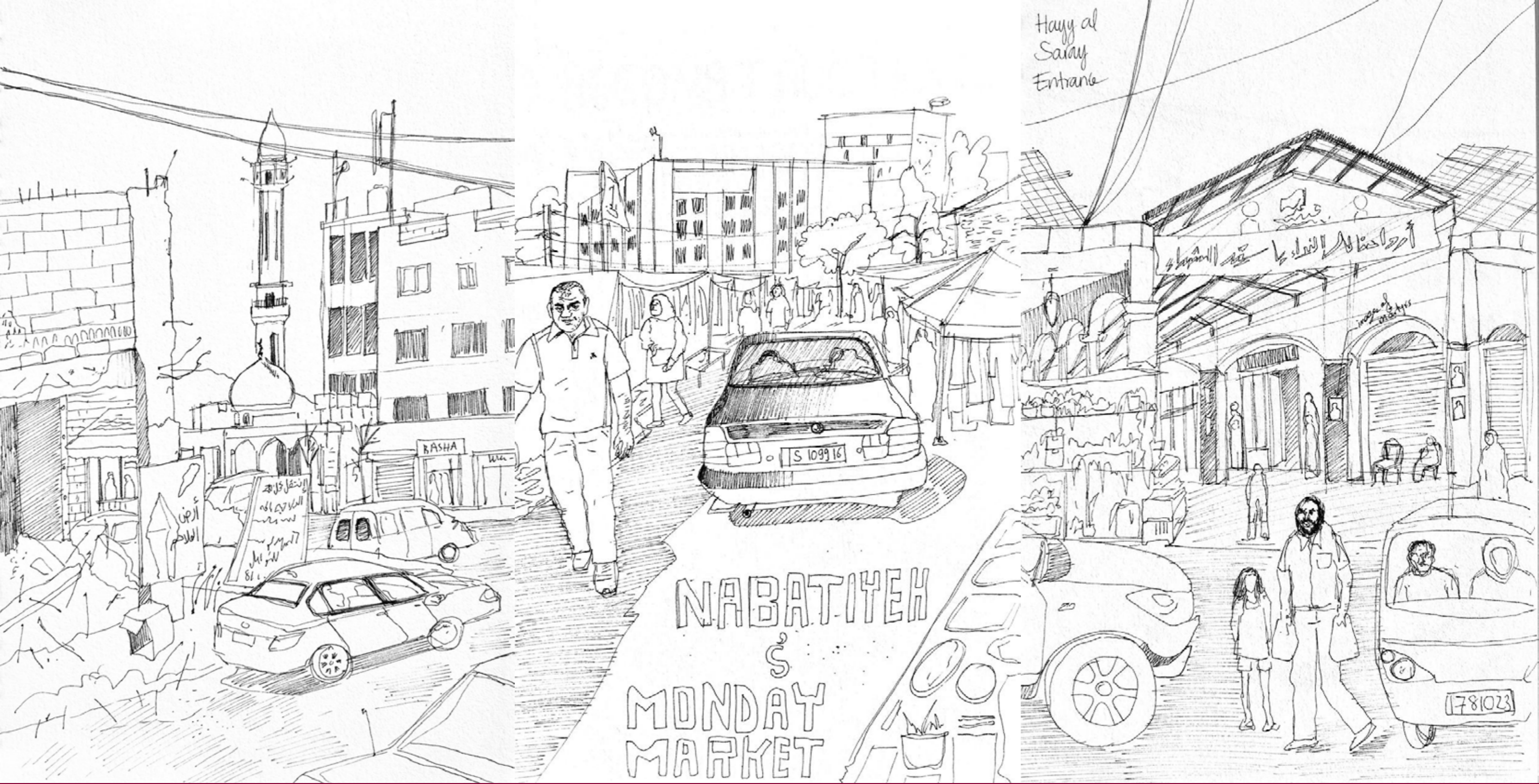


IDENTIFICATION OF INTERVENTIONS



Our problem definition was broken down into two main interventions, each addressing a critical aspect of the problem definition towards recovery in relation to displacement. One intervention tackles the economic challenges in the socio-economic core of Lower Nabatiyeh, whereas the second intervention is concerned with cultural regeneration.

-  Economic Intervention
-  Cultural Intervention



URDS 601

A PRODUCTIVE ECONOMIC SPINE

As a catalyst for recovery in the socio-economic core of Lower Nabatiyeh



The Condition of the socio-economic core of Lower Nabatiyeh after the 2024 war
Source: Kamel Jaber

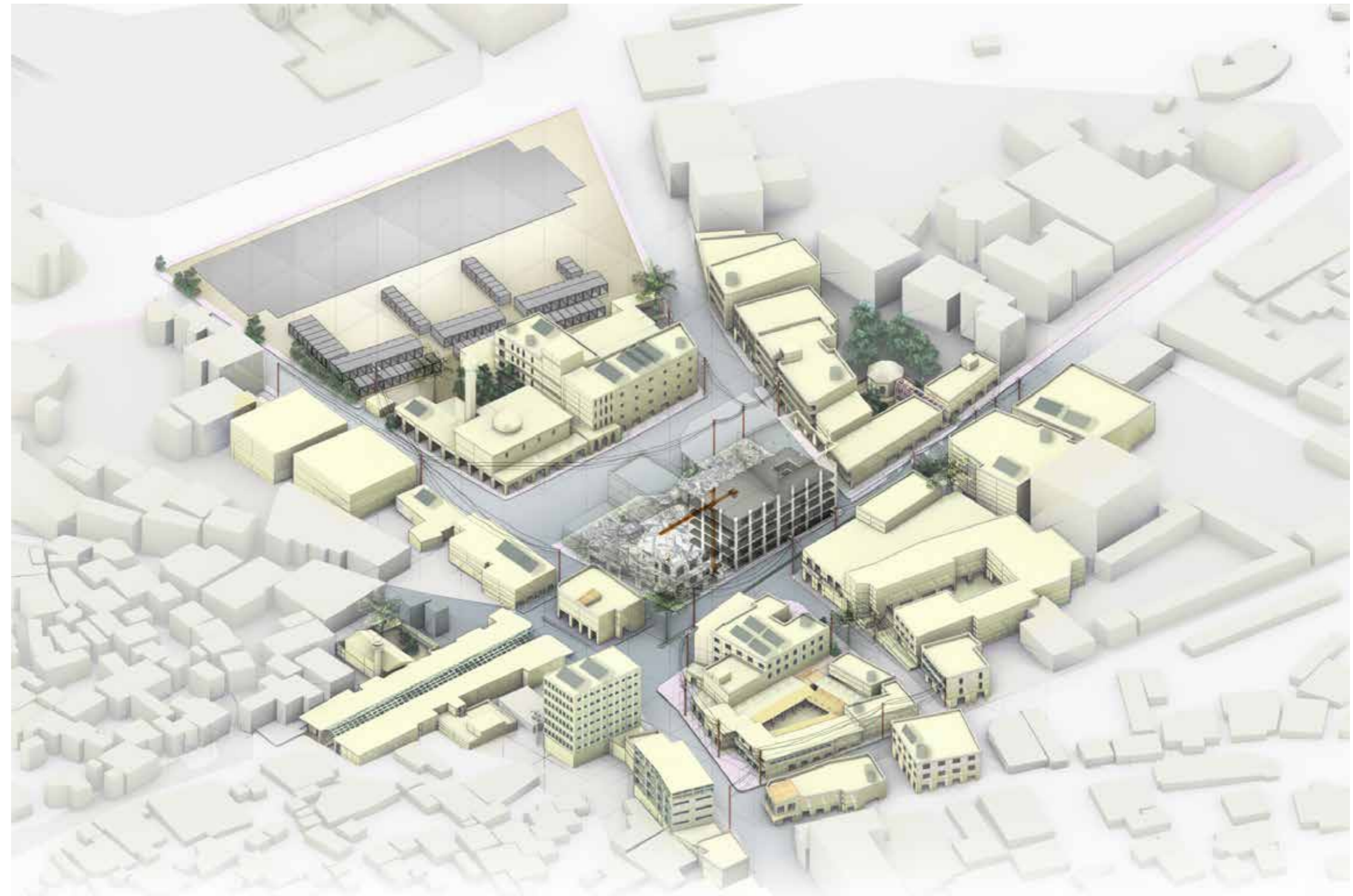
PROBLEM DEFINITION

The Souqs form the core of Lower Nabatiyeh as fluid convivial spaces of socio-economic exchange. Yet, the fluidity of the Souqs is challenged by fragmentation, and lack of structure as businesses move upwards outside Hayy el Serial propelling commerce to take over production. This condition is exacerbated by destruction and displacement due to the ongoing war in the absence of a unified regulatory framework for recovery and reconstruction.

تشكل الأسواق قلب المربع التجاري في النبطية التي تحت بوصفها فضاءات مرنة وحيوية للتبادل الاجتماعي والاقتصادي. إلا أن انسيابية هذه الأسواق تواجه تحديات بسبب التفتت وغياب التنظيم، مع انتقال الأنشطة التجارية صعودًا إلى خارج حي السراي، مما يدفع التجارة إلى الهيمنة على حساب الإنتاج. وتتفاقم هذه الحالة بفعل الدمار والنزوح الناتجين عن الحرب المستمرة، في ظل غياب إطار تنظيمي موحد لعمليات التعافي وإعادة الإعمار

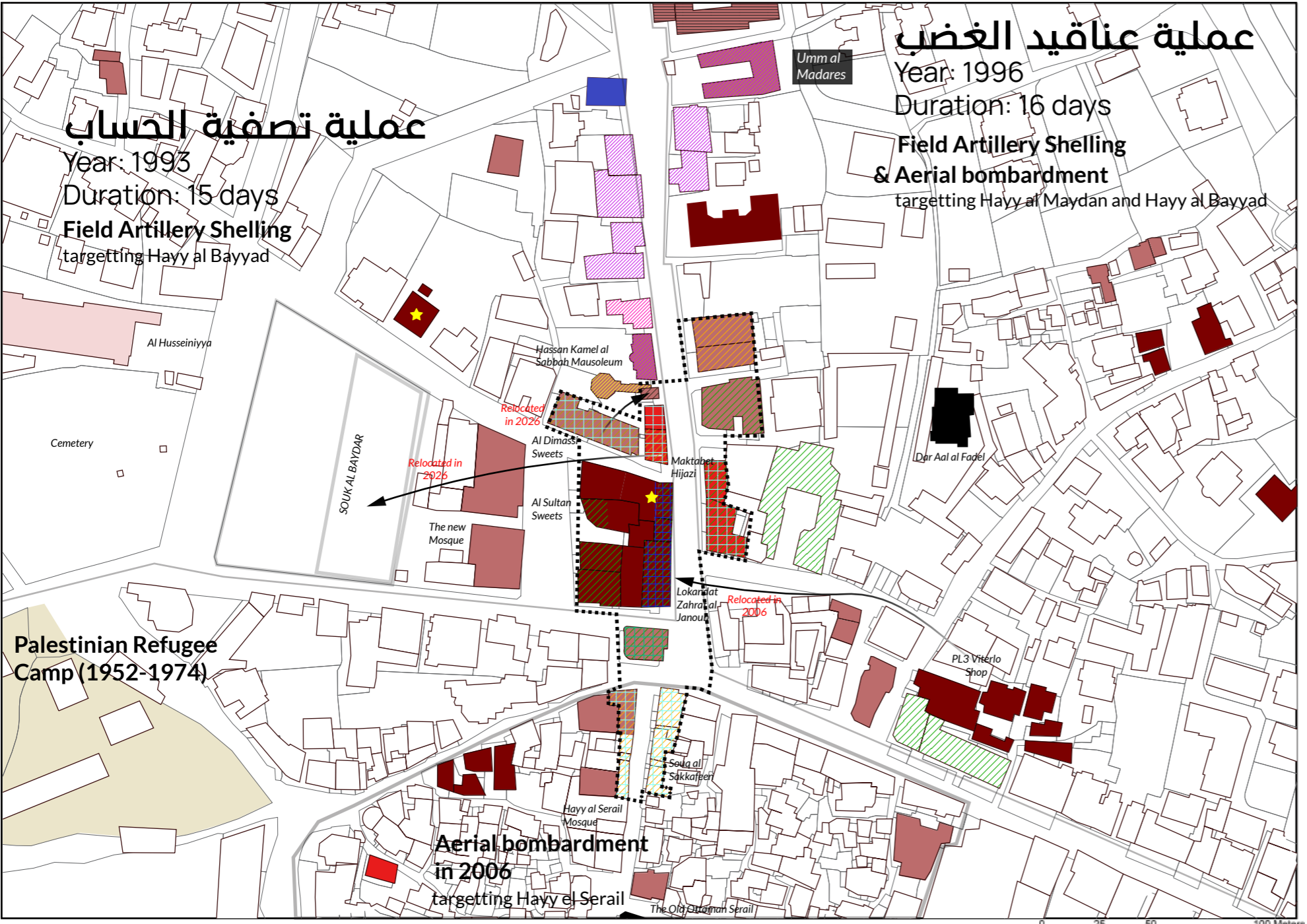
The impacts of the Israeli aggression on the socio-economic core of Lower Nabatiyeh on October 11, 2024 in numbers:

“A real Economic Battle!”



- 3000** housing and commercial units damaged
- 400** housing units fully destroyed
- 300** businesses were destroyed
- 40** heritage-deemed shops were destroyed
- 0.9** is the Lower estimate of debris (DENSITY 1.69 TM3) in tonnes in the city for 3000 buildings (based
- 60%** increase in rent **300-400\$** → **700-1000\$**
- 500k\$** poured into an emergency fund from locals and expats
- 65,000** Lower Nabatiyeh's population
- 95%** of Nabatanis returned after the ceasefire of 2024
- 10,000** displaced people
- 1340** remaining Syrian refugees (around 250 families)

DAMAGE ASSESSMENT IN THE SOCIO-ECONOMIC CORE OF LOWER NABATIYEH



Map by authour based on BUL's GIS layers, Google earth, validation on site, and Images taken from Ali Mazraani and Kamel Jaber



The Souqs targeted in 1982



Hayy el Serail Souq renovated in 2007



Al Manshiyya Transversal Section



Al Manshiyya Longitudinal Section



Sahat at Sultan Section

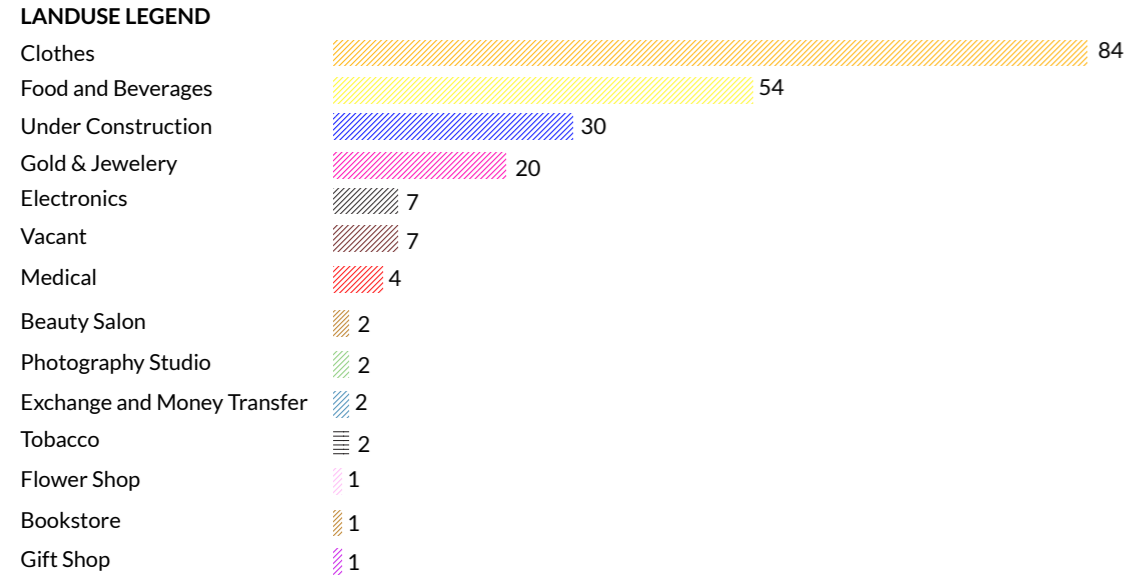


Hassan Kamel al Sabbah Mausoleum Section



Souq Hayy el Serail

LANDUSE



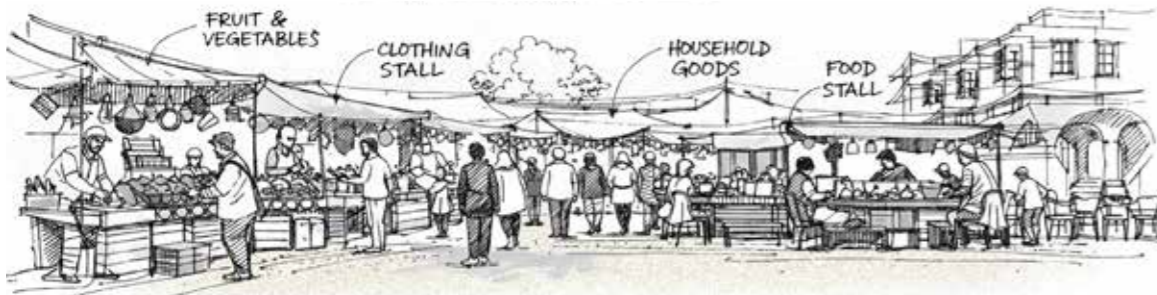
93.7% of businesses in the core occupy the ground floor
2.6% of businesses in the core exist underground
81% of shops in the core have an area that doesn't exceed 50 sqm



Satellite image from 2023



Satellite image from 2024 after the war

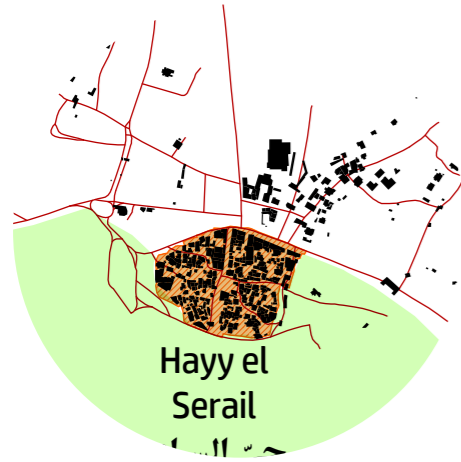


Fluid unstructured souqs in a highly-dense socio-economic core



COMMERCE & PRODUCTION IN THE SOCIO-ECONOMIC CORE OF LOWER NABATIYEH

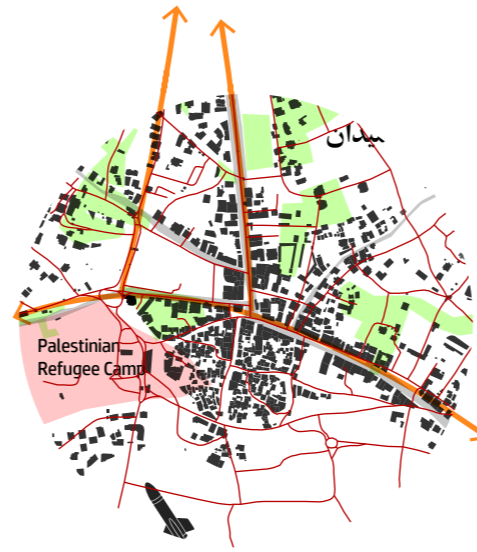
2023-Present
Destruction...
Reconstruction?!



Local economy was based on agriculture around Hayy el Serail. Commercial activity was concentrated in the old Serail souq and in the surrounding public spaces.



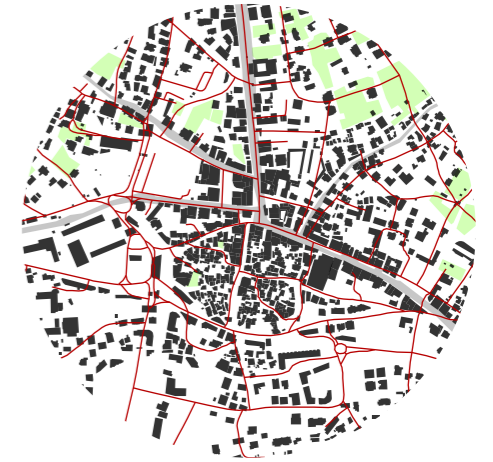
Outward expansion of businesses along two main axis: Hassan Kamel al Sabbah and Marjaayoun roads



Commerce and urbanization, as well as migration to Africa and the 1975 civil war impact on tobacco planting led to the deterioration of the agricultural sector.



After 2000, imports like clothing were introduced. Thus, the space reserved for food was reduced.

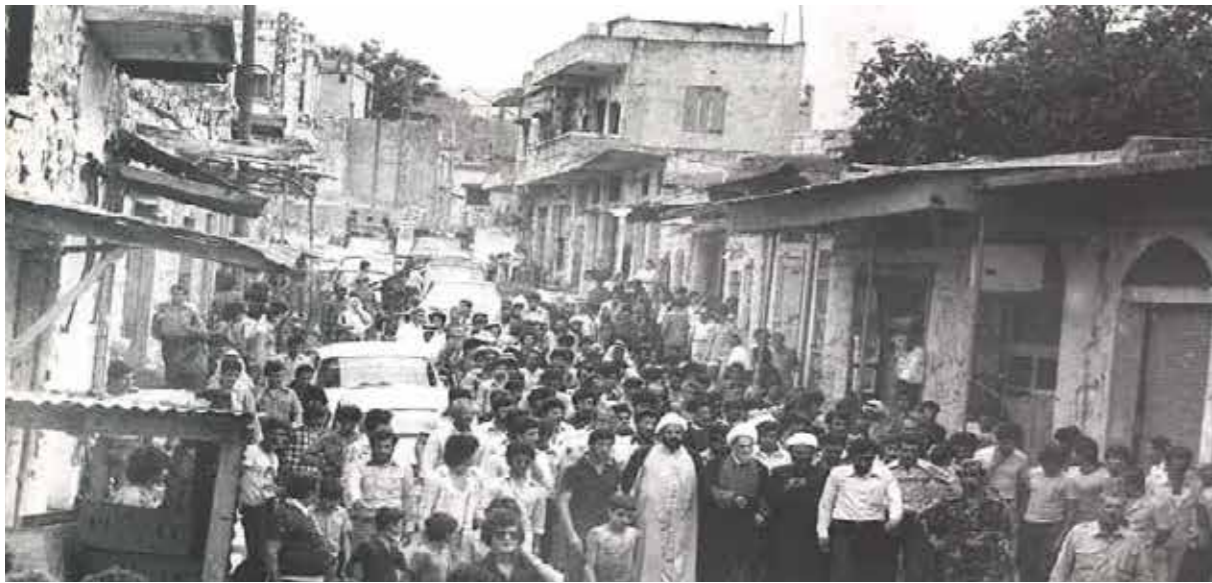


The core sustained major economic damages, with new businesses opened by displaced communities.



A lot of vendors used to come from Akka and Safad and Houran and Golan heights to sell their products.

Land value along those two main streets increases. New commercial arteries appear like Mahmoud Fakh street.



Souq al Sakkafeen 1950's



Souq al Sakkafeen 1999

The souq after its reconstruction Hassan Kamel al Sabbah main street early 2000's post 2006



800 shops were damaged
300 businesses were destroyed
300 new businesses opened after Oct. 7



The core after the 2024 war



NABATIYEH RECOVERY VISION

Part of the Israeli war tactics is to disrupt local and regional socio-economic networks and disconnect major regional centers like Nabatiyeh from its hinterland.

Our economic vision of recovery that's catalytic for the socio-economic core of Lower Nabatiyeh and subsequently Nabatiyeh, the caza and governorate, is to reconnect Nabatiyeh and its hinterland via restoring the severed socio-economic networks and relations.

By adopting the concepts of **import substitution** and **local economic independance**, we aim to reduce dependancy on externally supplied goods and instead capitalize on local production. Instead of exporting raw products or materials, complemetary/secondary production services will be provided in the core of Nabatiyeh while primary production is carried in the hinterland.

Hence, not only will the socio-economic core of Lower Nabatiyeh serve as a central marketplace of goods and raw materials coming from the hinterland, but will also contribute to local and regional production.

In conclusion, Nabatiyeh retains and recirculates surplus within the South, forming a regional economic chain.



STRATEGIC INTERVENTION

“قصة الشقيف”

“The spine of Chqif”

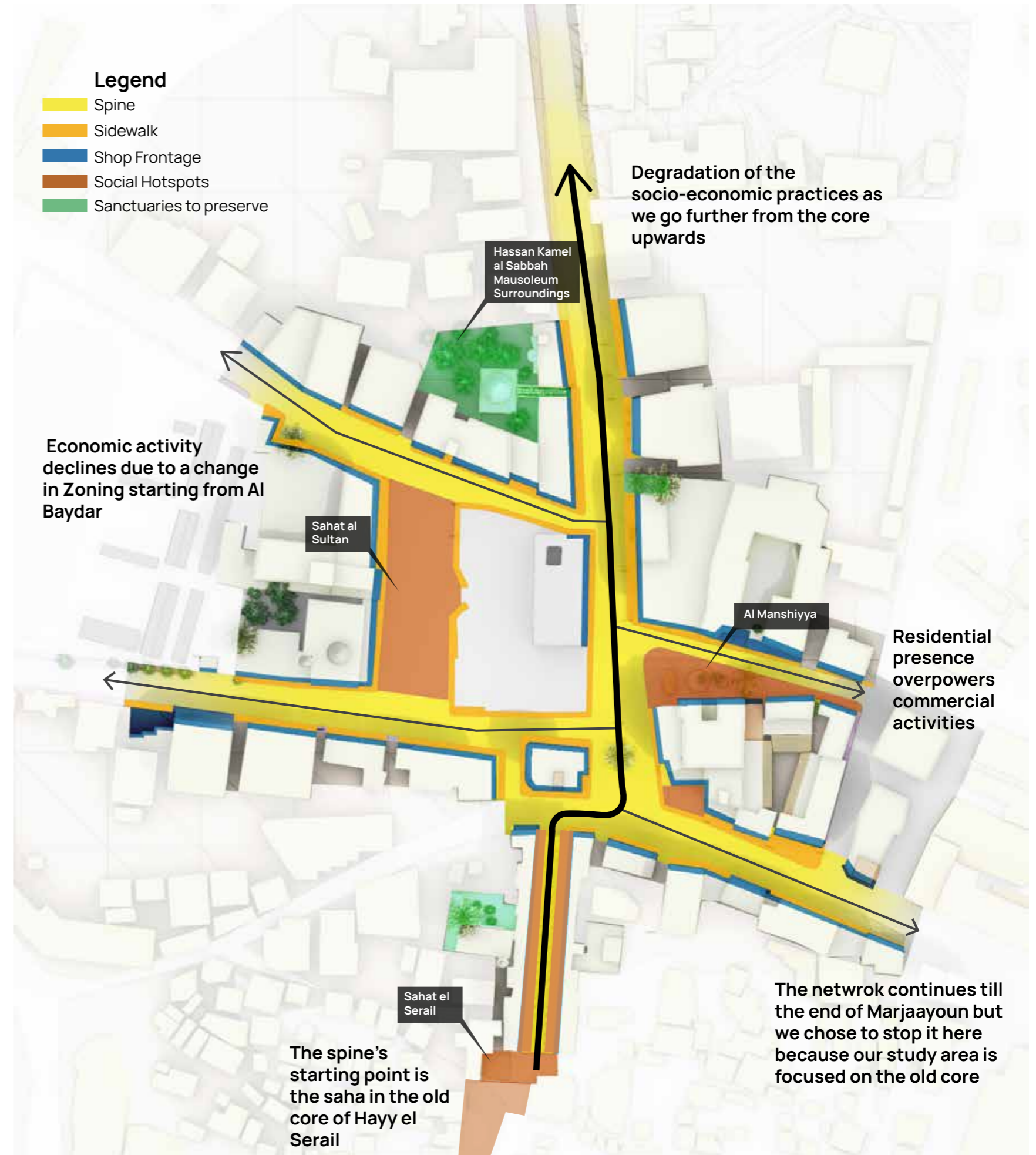
(Al Amine, 1961, p.364)

The proposed economic spine is catalytic to our local and regional economic recovery vision. It serves as a productive urban infrastructure of recovery rather than just a commercial corridor. By enhancing the gradient of key economic and social public spaces, it reorganizes the flows of exchange and social interaction in the socio-economic core of Lower Nabatiyeh.

The spine consists of five main complementary spatial components:

- Hassan Kamel al Sabbah main street
- The old souq of Hayy el Serail
- Three municipally-owned public spaces which are: al Manshiyya, Sahat al Sultan, and Sahat al Serail.

يعمل المحور الاجتماعي-الاقتصادي المقترح كبنية تحتية إنتاجية للتعافي، لا كممر تجاري فقط. ومن خلال إعادة تصميم و احياء و تعزيز الفضاءات العامة الاقتصادية والاجتماعية الأساسية، يعيد تنظيم تدفقات التبادل والتفاعل الاجتماعي ضمن المربع التجاري في النبطية التحتا



STRATEGIC GOALS

Case studies

1 Mdinti



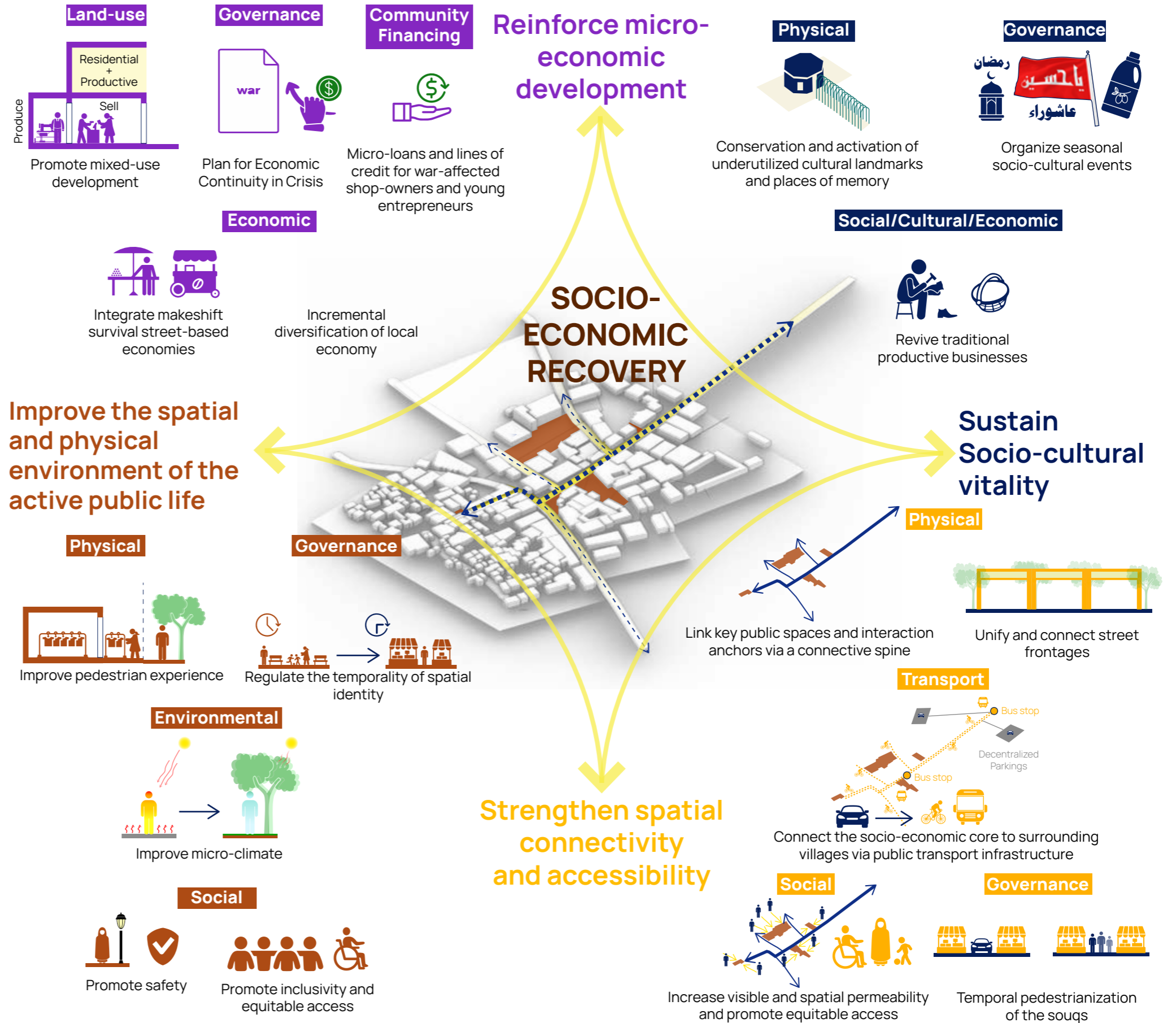
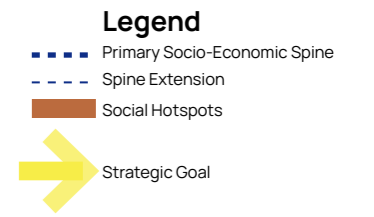
A local Tunisian initiative whose aim is to preserve and celebrate the cultural and economic heritage of the Medine of Tunis by fostering socio-economic development and strengthening local governance and advocacy.

2 26th Street Corridor Plan, Chicago



The 26th Street Corridor Plan seeks to drive economic development and support community organizations in the Little Village neighborhood of Chicago by invigorating and redesigning the public realm. The proposed scheme builds on enhancing pedestrian infrastructure and frontage design, as well as enhancing visual permeability. Community involvement was central to the project's vision.

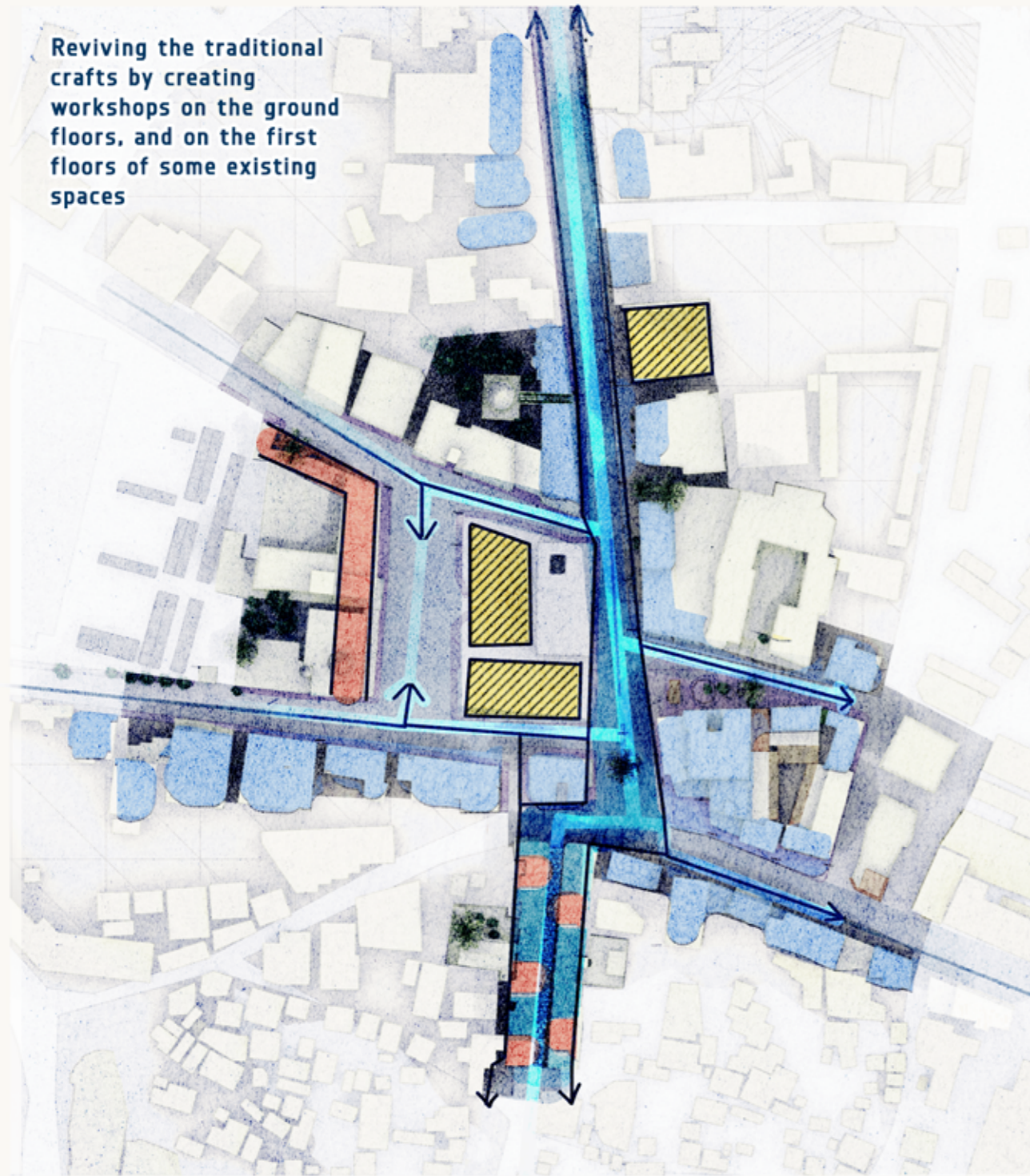
An Integrated Approach to In-War Socio-Economic Recovery



SPATIAL STRATEGIES

1-Reinforce micro-economic development through spatial transformation

Reviving the traditional crafts by creating workshops on the ground floors, and on the first floors of some existing spaces



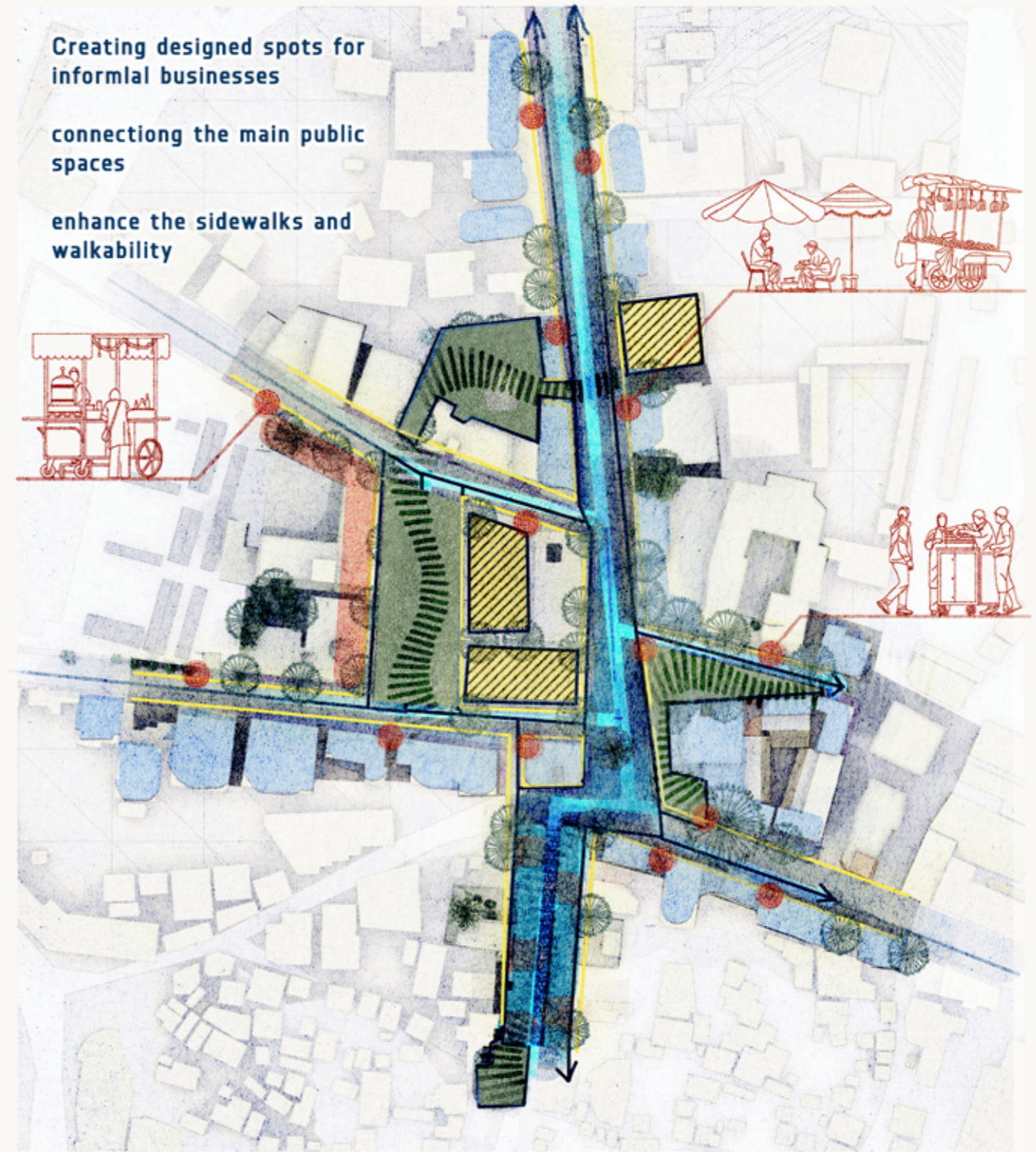
- Workshops in the first floor ensuring spaces to recover people who lost their shops in war
- Main active economical street
- Workshops in the ground floor to reinforce the presence of the traditional crafts
- War Demolished Buildings to be included in war recovery Plan

2-Improve the spatial and physical environment of the active public life

Creating designed spots for informal businesses

connecting the main public spaces

enhance the sidewalks and walkability

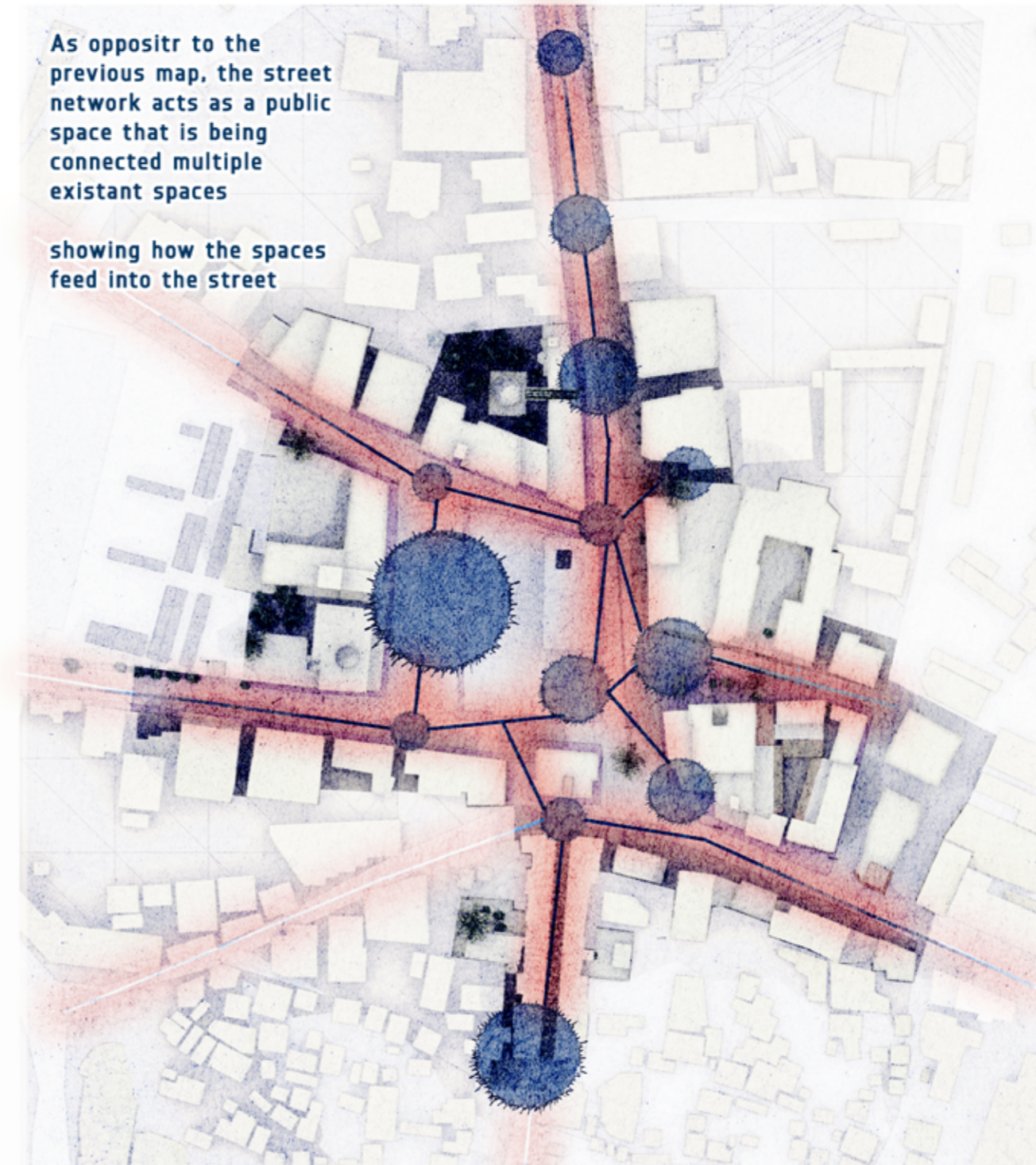


- Lighting and signage track
- Main active economical street
- Informal business developed potential spots
- Main public spaces

3-Strengthen Socio-spatial connectivity Strategies

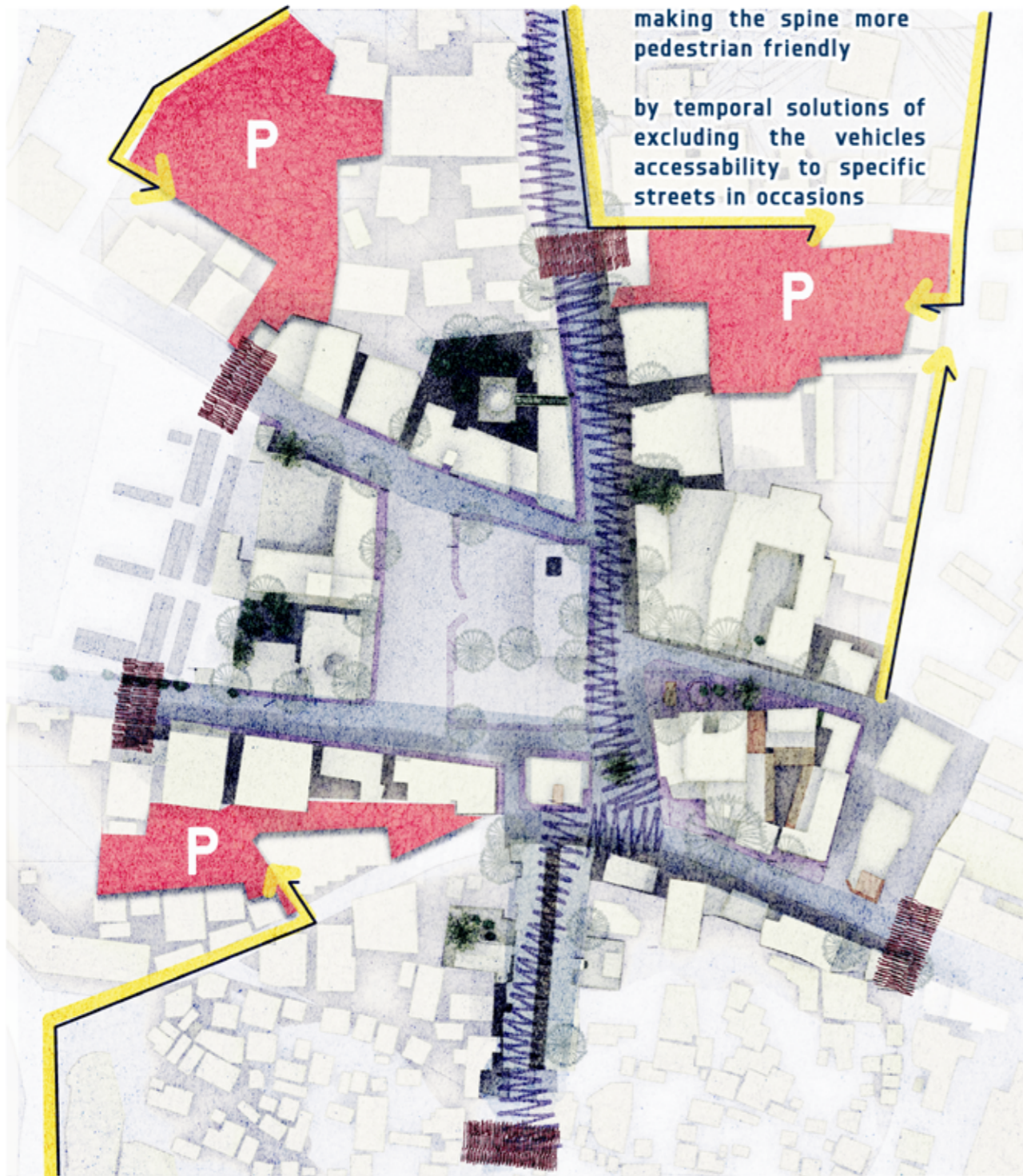


- Spatial connectivity points
- Areas of social aspect to be linked through the points

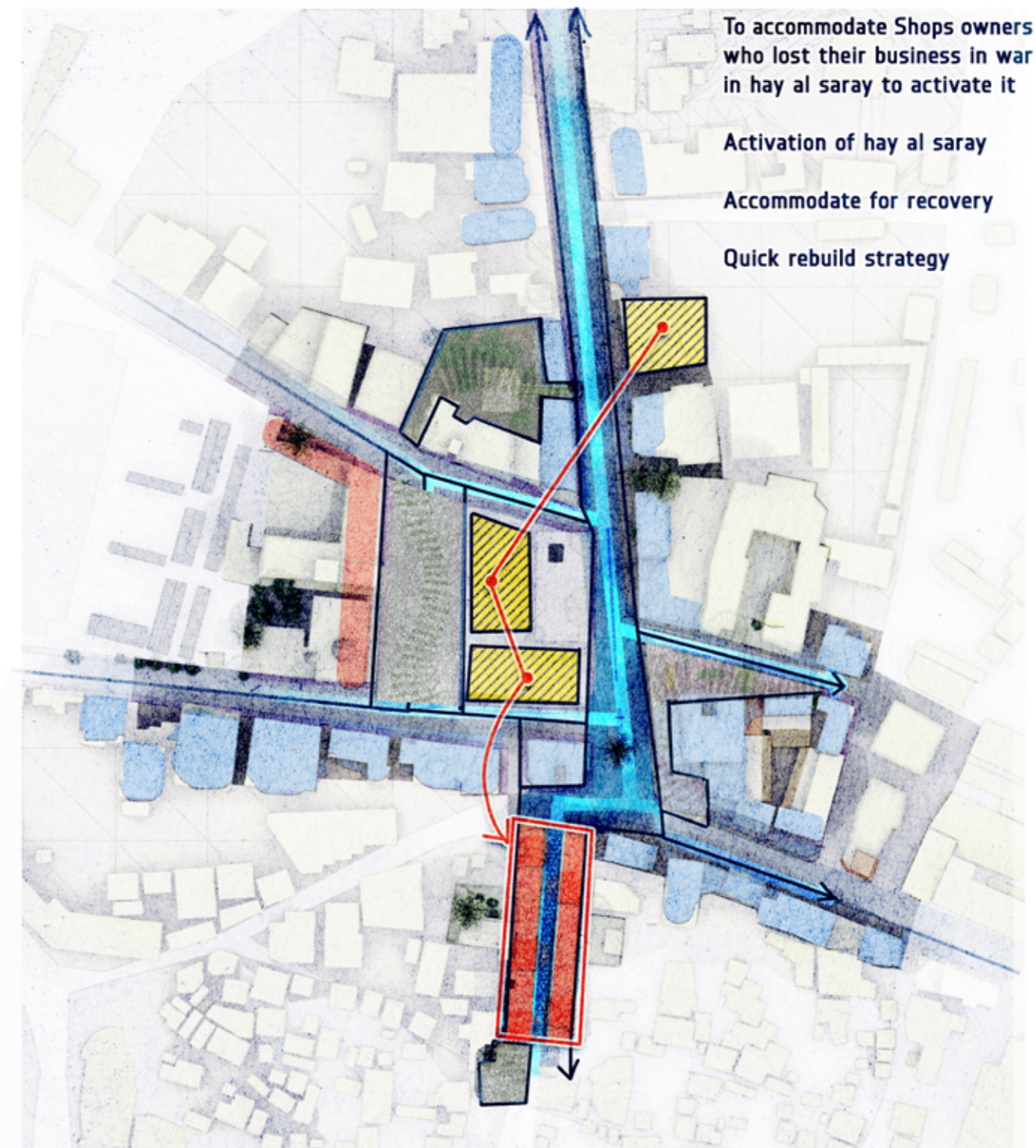


- Hotspots of public spaces and intersection areas
- Streets as publis spaces

4-Sustain Socio-economic vitality



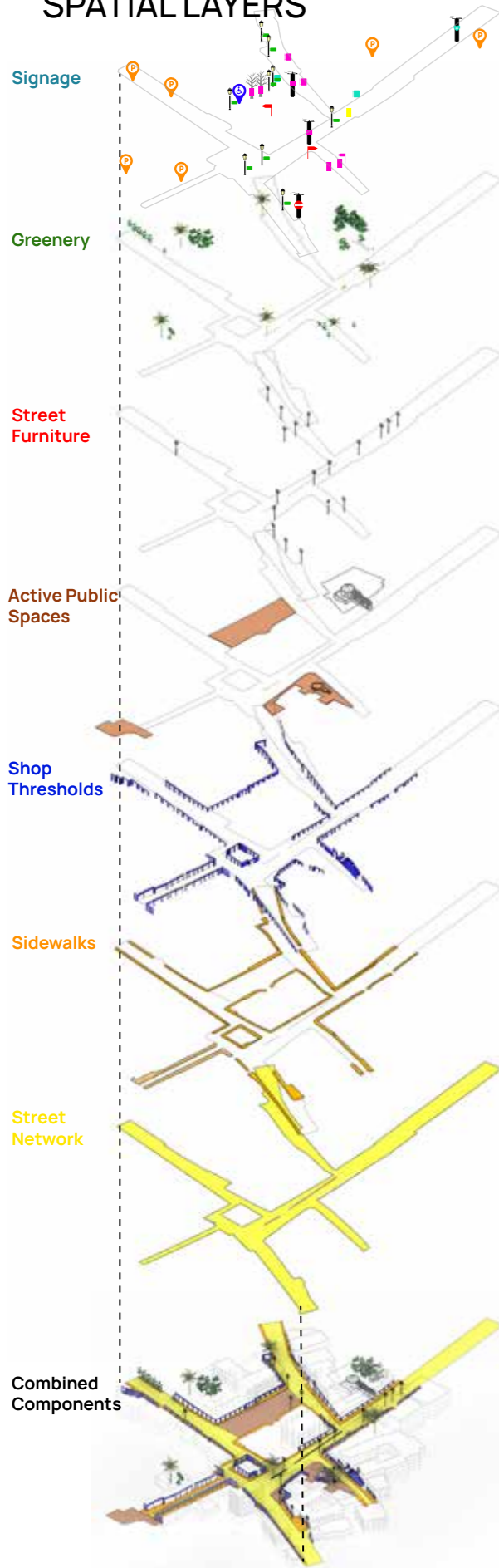
- Alternative Secondary streets leading to parking spaces
- Suggested Parking spaces to Support pedestrian movements on the core
- Pedestrianized streets on occasional uses
- Vehicles non physical borders



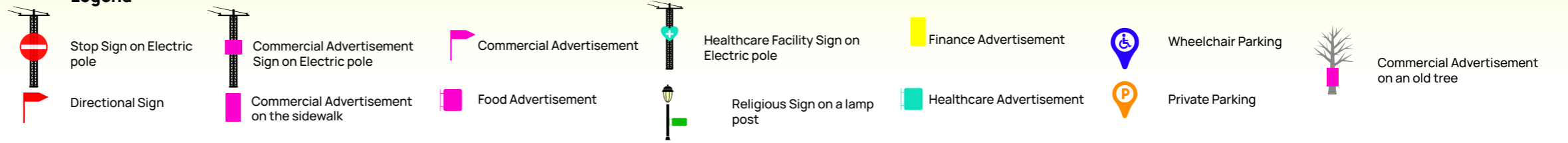
- Business owners affected by war (demolished shops) to be accommodated
- Hay al saray shops development
- Main active economical street
- Main public spaces

THE SPINE

SPATIAL LAYERS

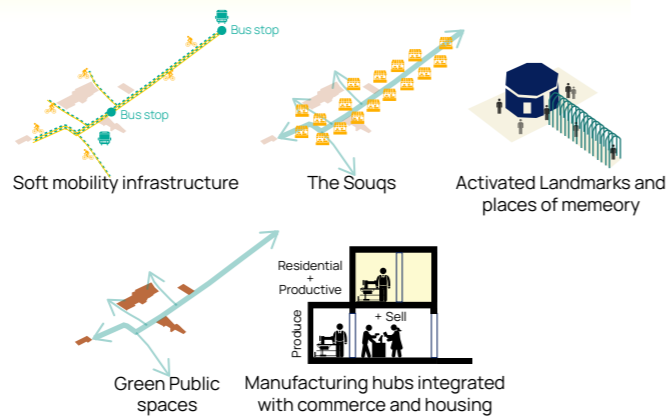


Existing Signage Types Legend



THE SPINE AS A PRODUCTIVE URBAN INFRASTRUCTURE

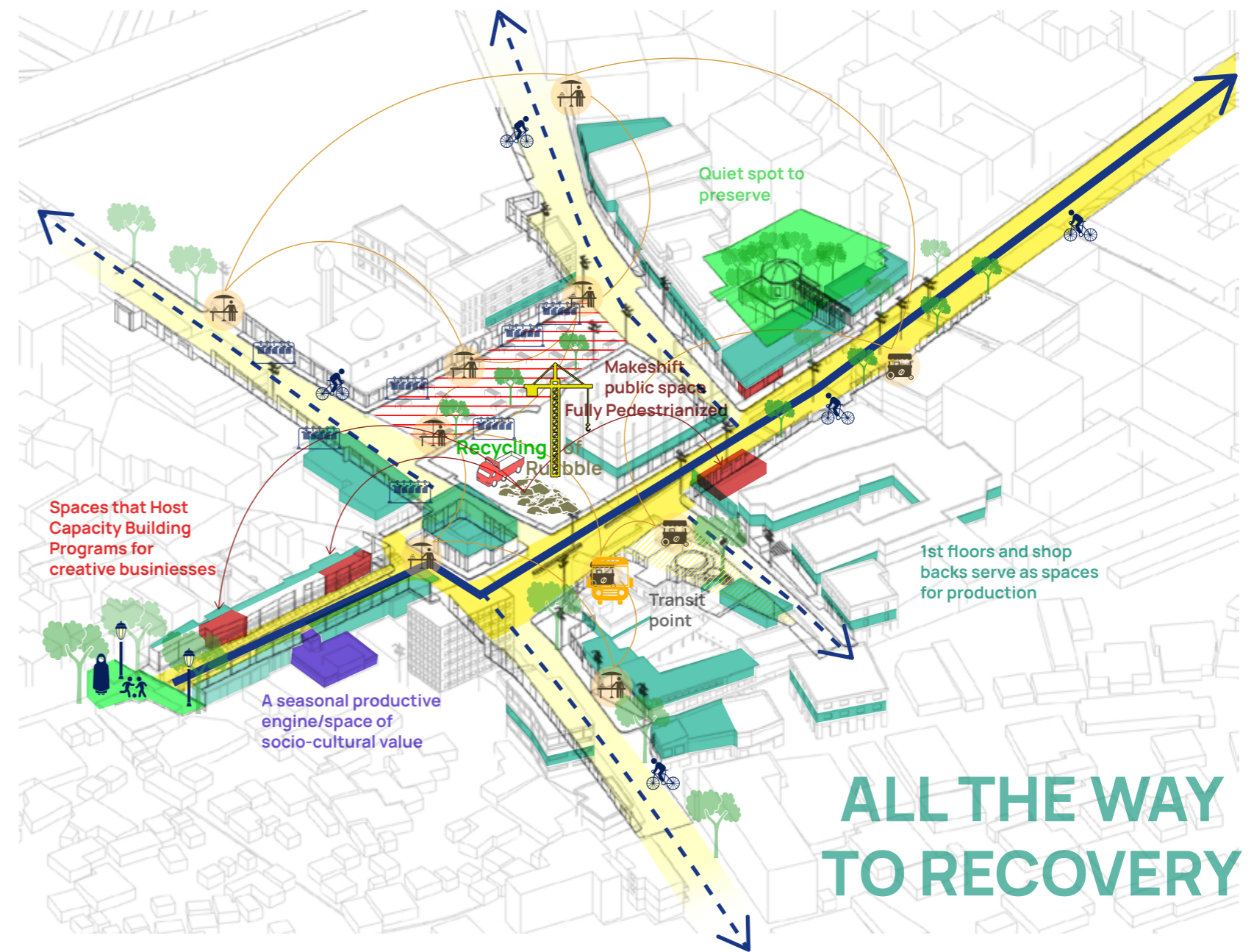
Productive Infrastructure



Tangible Products



Intangible Products

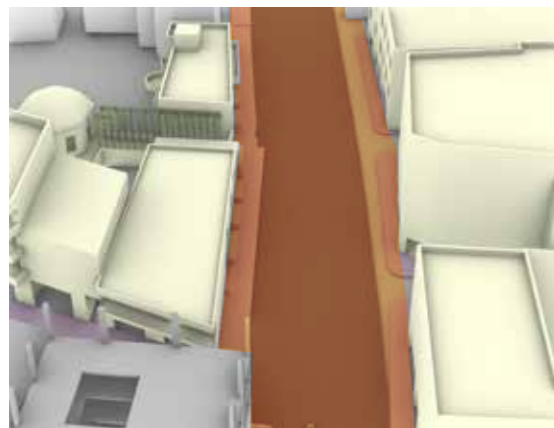
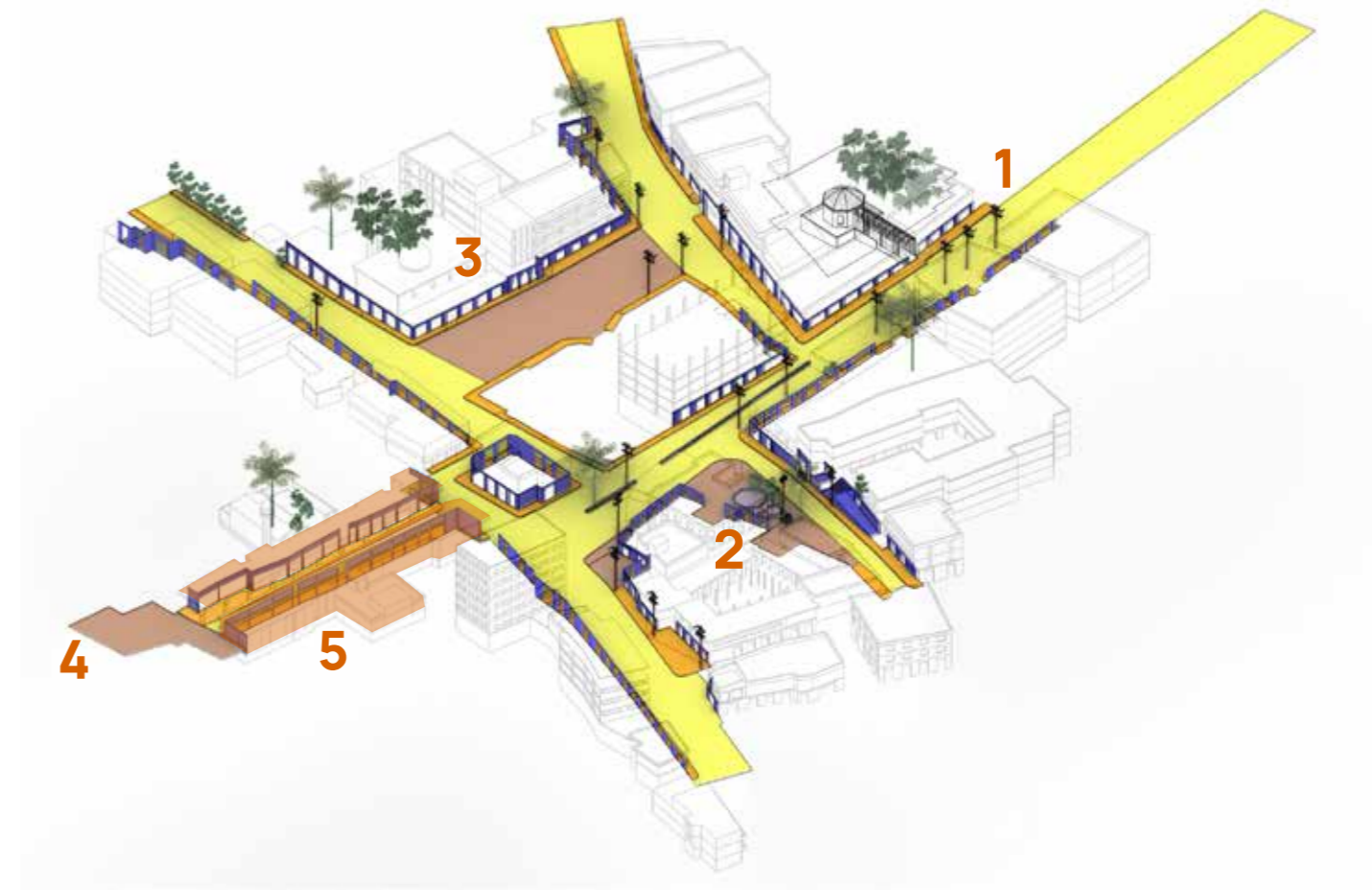


ALL THE WAY TO RECOVERY

SPATIAL COMPONENTS

The spine in totality consists of 5 main spatial components.

- Hassan Kamel al Sabbah main street
- The old souq of Hayy el Serail
- Three municipally-owned public spaces which are: al Manshiyya, Sahat al Sultan, and Sahat al Serail.



1. Hassan kamel al Sabbah Street

The core's main commercial artery



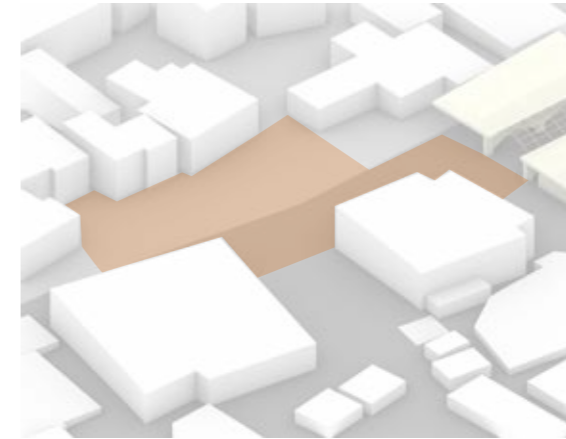
2. Al Manshiyya

A major social hub and transit point that hosts survival economies set up by locals and displaced communities.



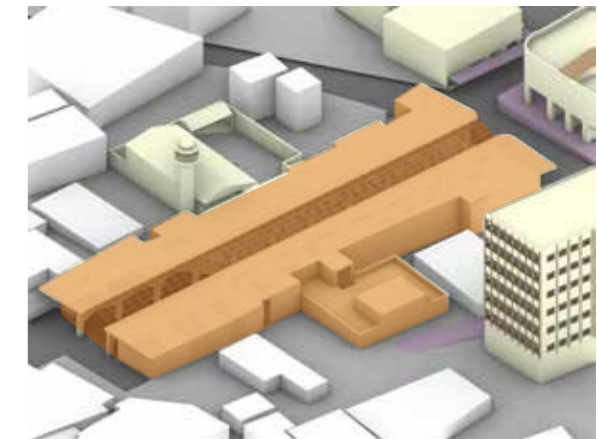
3. Sahat al Sultan

A green public space with a temporal character. It becomes an extension of the fluid souqs on Mondays and a social gathering place during regular weekdays, hosting food-informal businesses.



4. Sahat Hayy el Serail

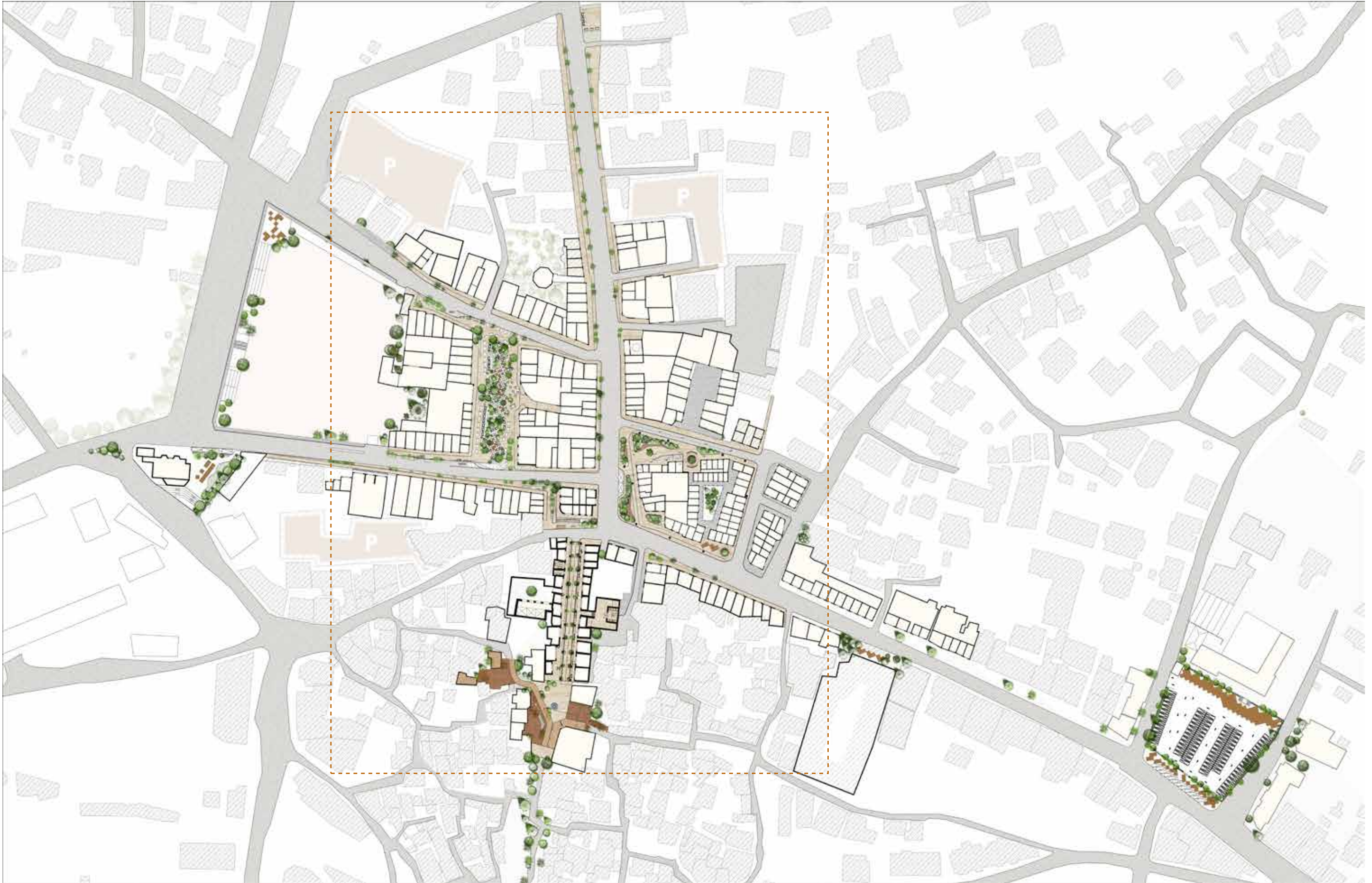
A domestic public space that is women and children friendly.



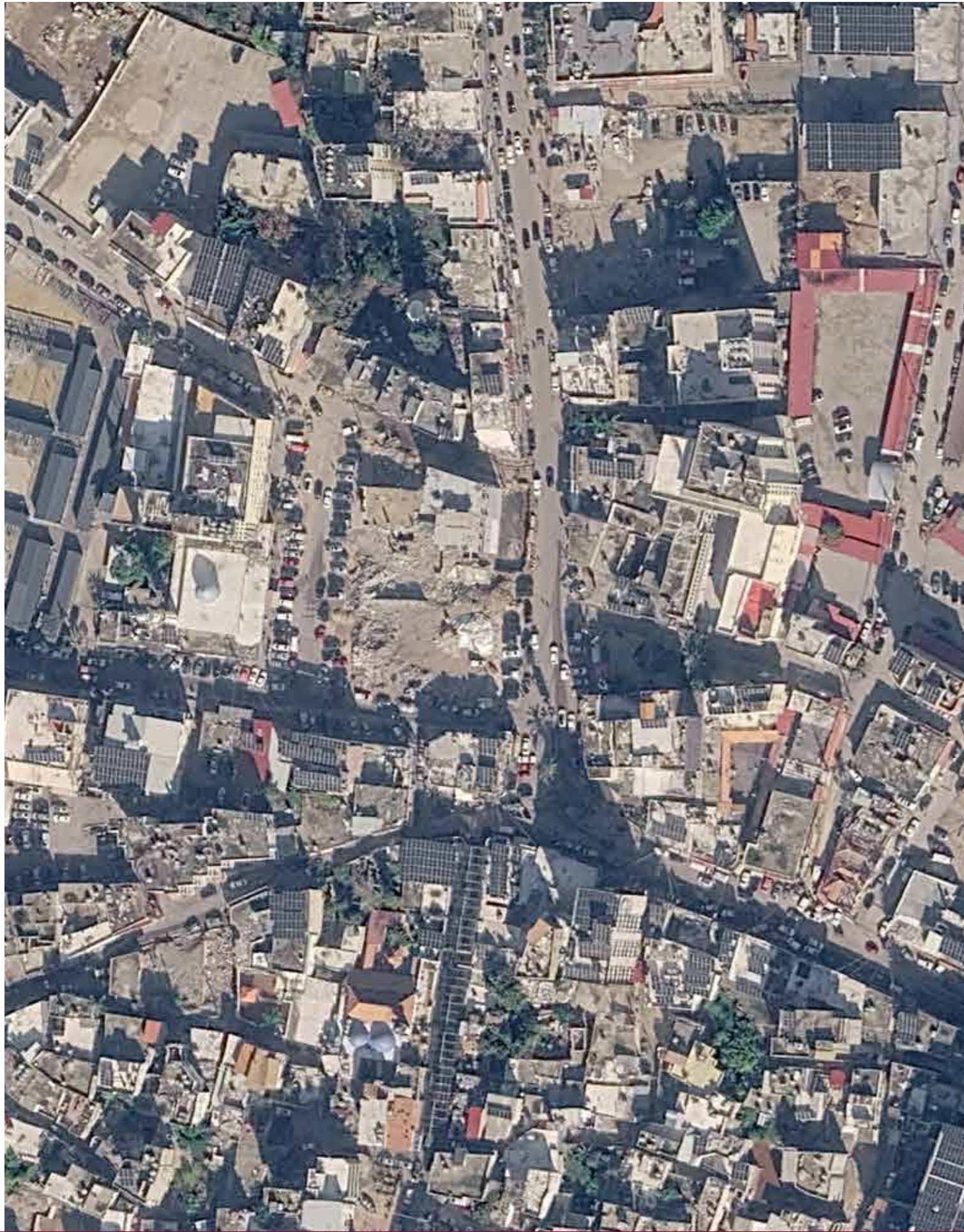
5. The old Souq of Hayy el Serail

An active extension of the market that contributes to local production and hosts capacity-building workshops.

ECONOMIC SPINE MASTER-SCHEME



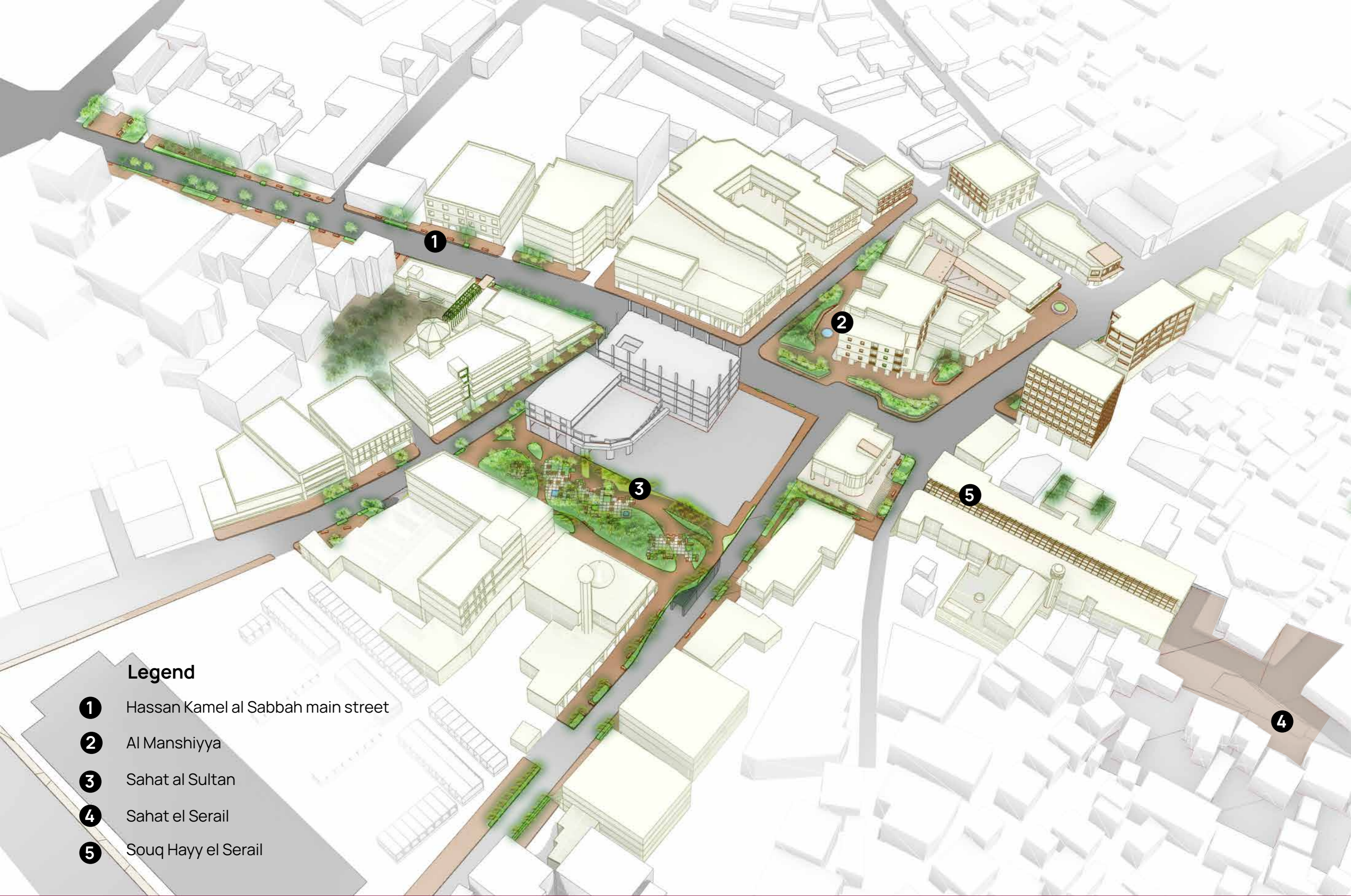
ECONOMIC SPINE MASTER-SCHEME





Legend

- 1** Hassan Kamel al Sabbah main street
- 2** Al Manshiyya
- 3** Sahat al Sultan
- 4** Sahat el Serail
- 5** Souq Hayy el Serail



Legend

- 1 Hassan Kamel al Sabbah main street
- 2 Al Manshiyya
- 3 Sahat al Sultan
- 4 Sahat el Serail
- 5 Souq Hayy el Serail

STREETSCAPE RE-DESIGNING

BEFORE

Main Street: Hassan Kamel al Sabbah



AFTER



Key Plan

BEFORE

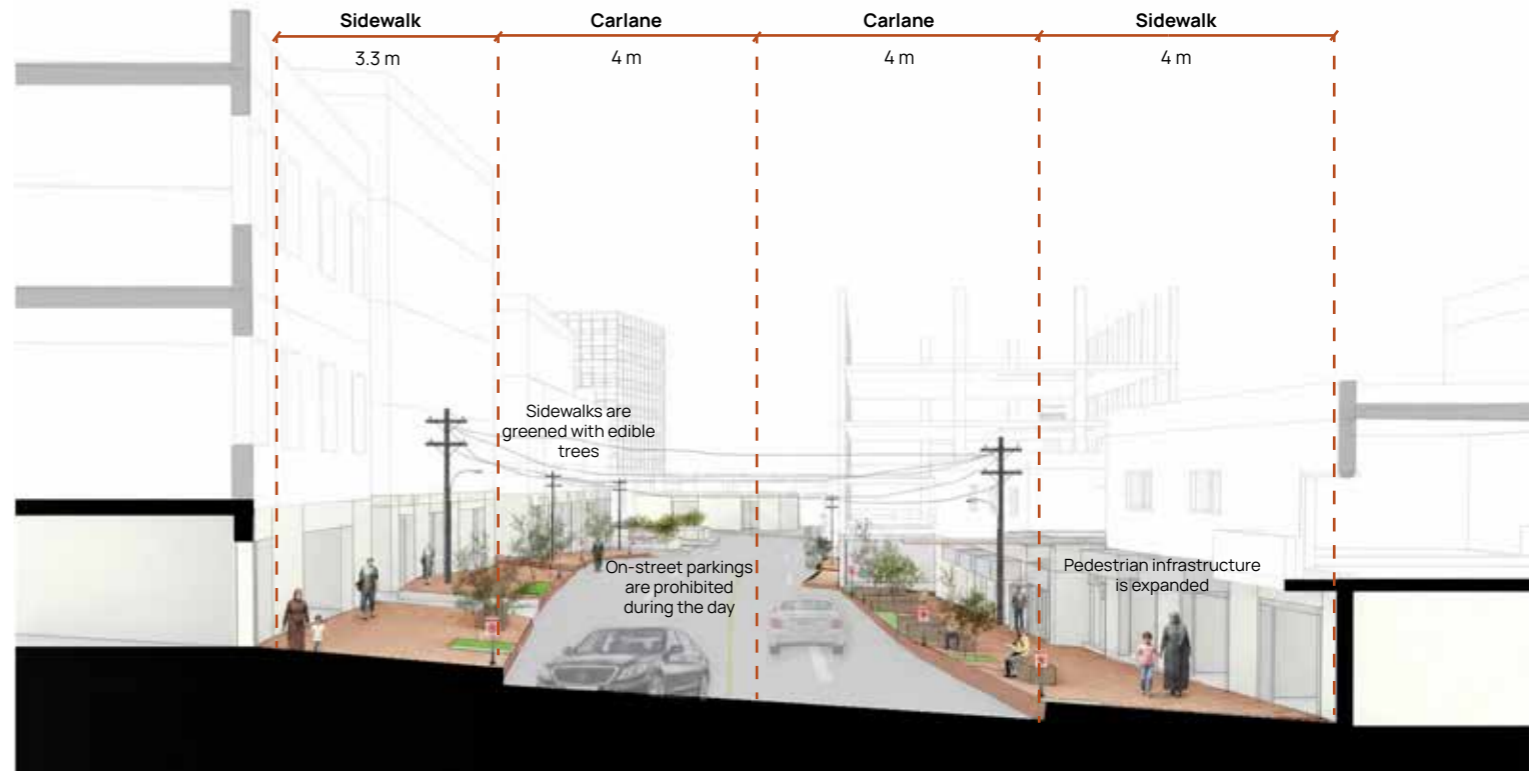
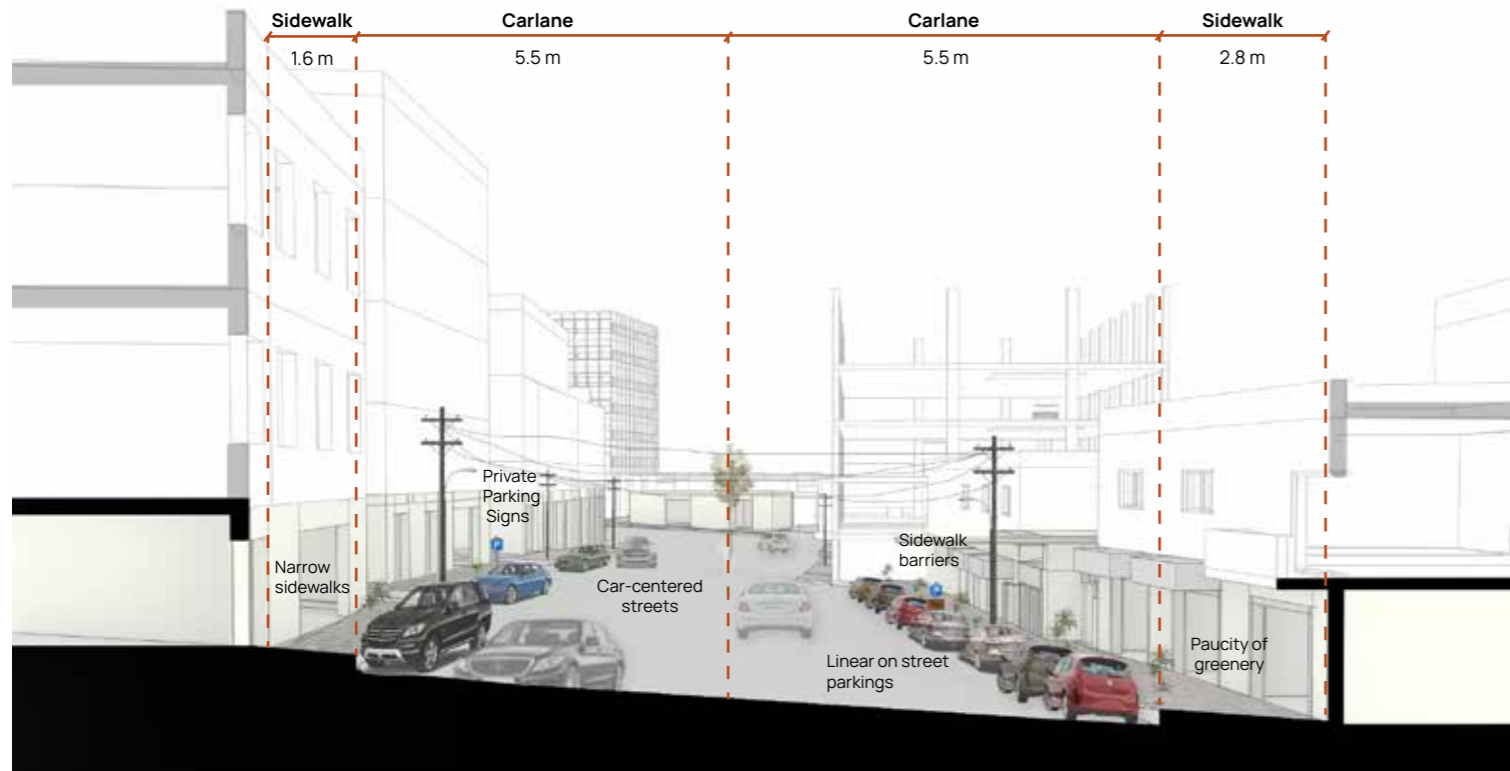
Main Street: Hassan Kamel al Sabbah



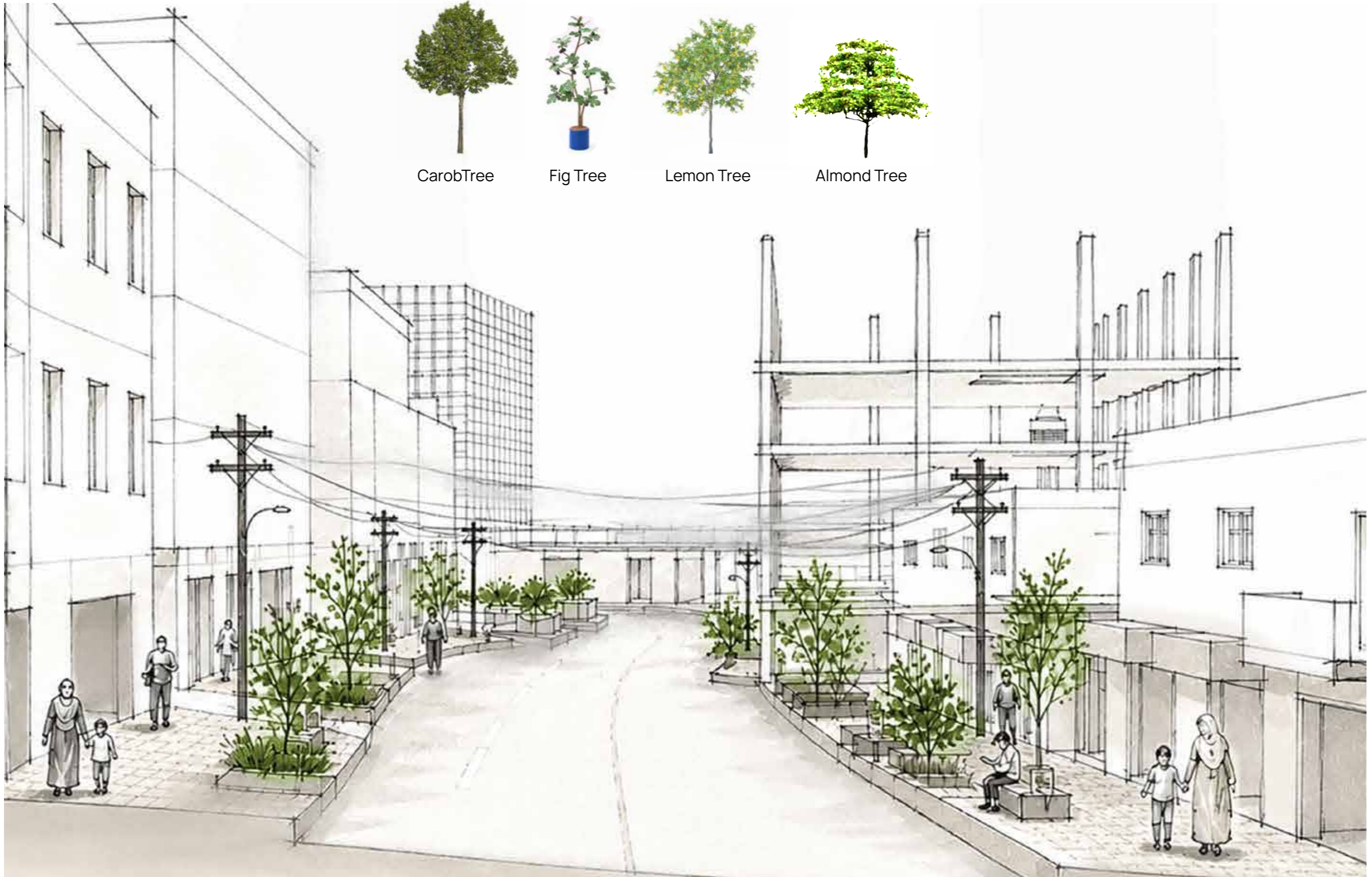
AFTER



Elevations



Sections



Carob Tree



Fig Tree



Lemon Tree



Almond Tree

“تشرق صباح النبطية من ساحتها”

“Nabatiyeh’s sun rises from its saha.”

Kamel Jaber, 2024



Kay Plan

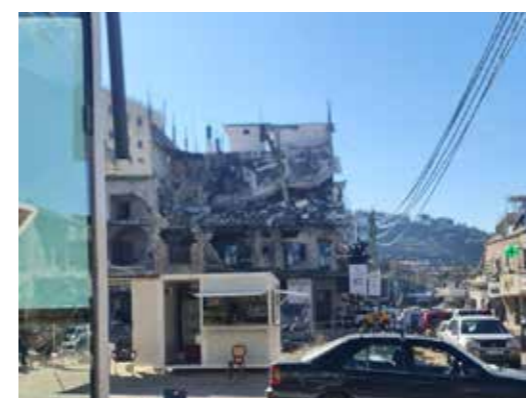
1980's



2000's

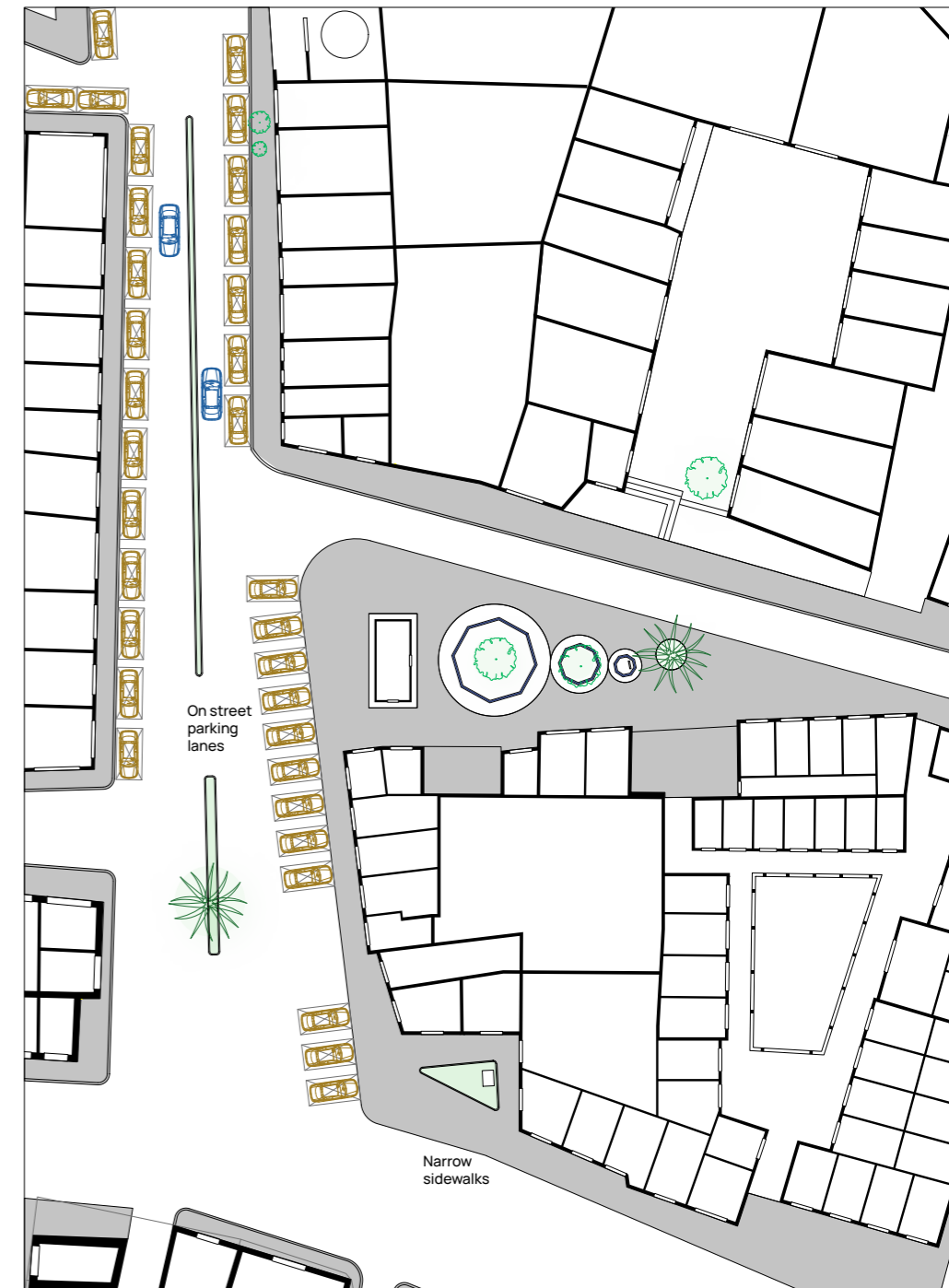


2000's



A social hotspot for taxi-drivers and early-hoirs commuters

After the war, the saha became dominated by survival economies and infromal vendors



Al manshiyya used to serve as a caravan stop from where people can reach Nabatiyeh's hinterland and Palestine. When cars then buses then vans entered the city in the 40's and 50's, al Manshiyya became a major stop for them and a natural transit point. It wasn't untill the 70's that cars were introduced into the surrounding villages.

Most shops around al Manshiyya used to sell pastry, coffee, and some served as libraries considering the saha's proximity to many schools in the area.

Furthermore, with the rise of socio-political awareness in Nabatiyeh, the saha became a major place for protest and dissent in support of national and regional causes.

CONCEPT

Al Manshiyya is envisioned as a well-defined, social space and a transit stop that is strongly connected to its surroundings both visually and spatially.

Design Strategies & Action Plans

Enhance spatial and visual connectivity

Action Plans

- Remove visual obstacles and hindrances
- Establish Al Manshiyya as a primary transit stop that connects Nabatiyeh to its surroundings

Enhance memory and the continuity of socio-spatial/ cultural/ economic practices

Action Plans

- Create spaces for spontaneous social encounters
- Engage local creatives to network and complement the souq's traditional crafts and businesses

Enhance Walkability /Pedestrianization

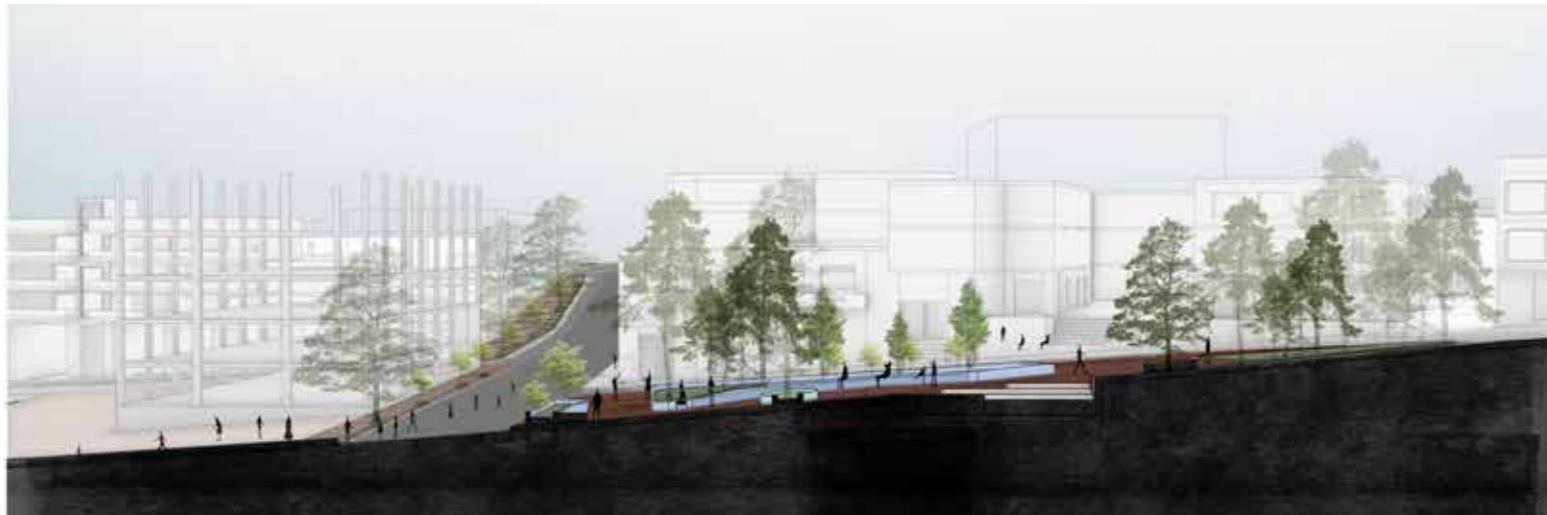
Action Plans

- Widen sidewalks
- Inject greenery to enhance micro-climates

Promote Inclusivity

Action Plans

- Design makeshift regulated multi-use program for diverse users
- Provide the space with necessary services (water, electricity...)





Al Manshiyya perspectival view



Al Manshiyya Sketch



Key Plan

1980's



The saha as an extension of the Monday Market

2010's-2024



The saha as an extension of the Monday Market



Al Sultan sweet, the saha's landmark



The saha as an active passage connecting two main arteries and

2024-2026



The saha as a parking space currently



On street parking lanes

Narrow sidewalks

CONCEPT

Sahat al Sultan is transformed from a static parking lot into a green, productive space that acts as the breathing lung of the dense commercial souq, supporting socio-spatial practices and facilitating for mixed-use activities.

Design Strategies & Action Plans

Enhance memory and the continuity of socio-spatial/ cultural/ economic practices

Action Plans

- Create spaces for spontaneous social encounters
- Revive the saha's historic commercial function

Introduce local production and support economic independence and vitality

Action Plans

- Introduce productive practices with socio-cultural value
- Designate specific spots and timeslots for the operation of survival economies

Enhance Walkability /Pedestrianization

Action Plans

- Regulate shop leakage on the sidewalks
- Widen sidewalks
- Inject greenery to enhance micro-climates

Promote Inclusivity

Action Plans

- Design makeshift regulated multi-use program for diverse users
- Provide the space with necessary services (water, lighting...)





Sahat al Sultan on Regular Weekdays



Sahat al Sultan on Mondays



Sahat al Sultan during Ramadan



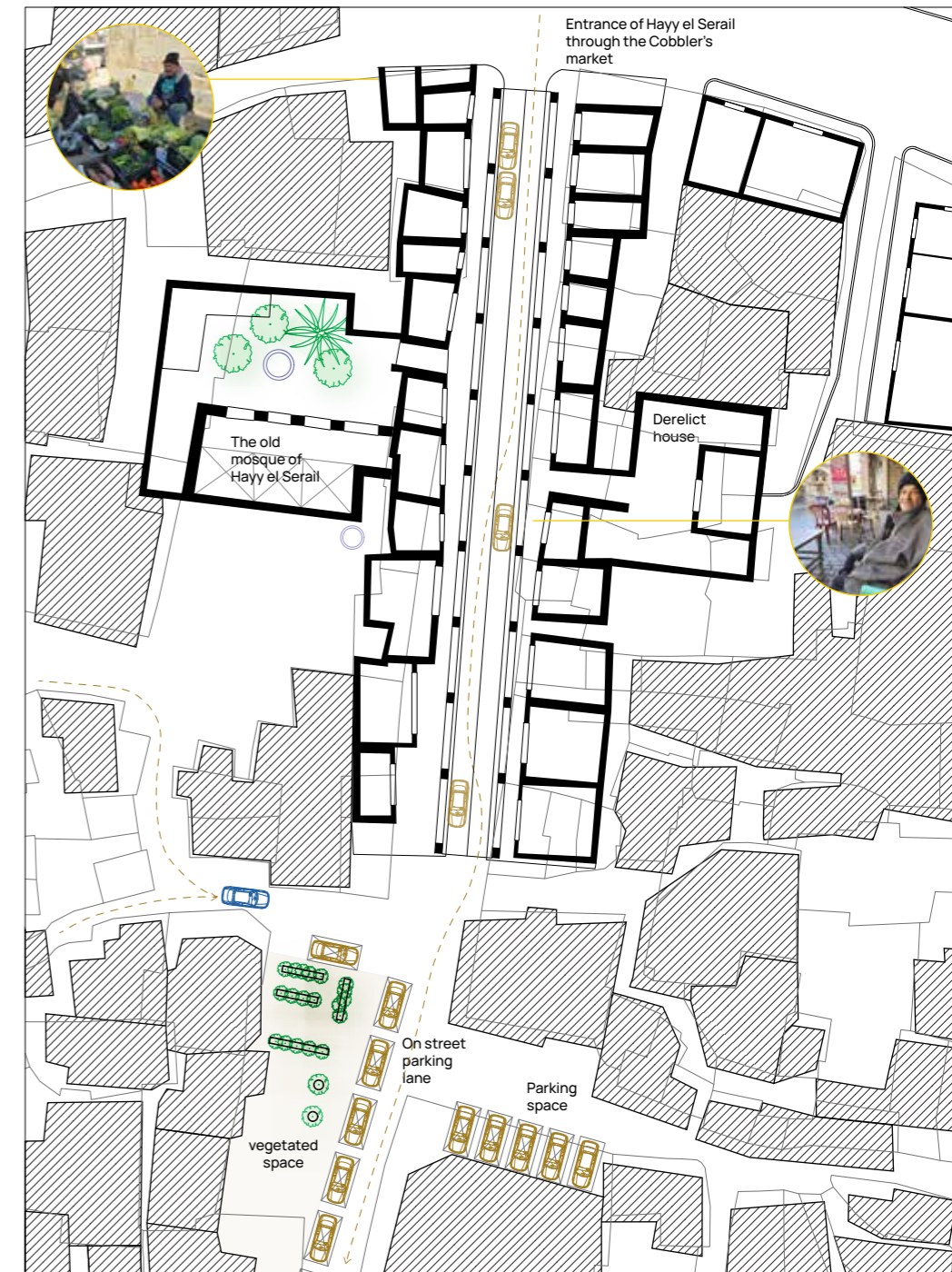
Sahat al Sultan Sketch



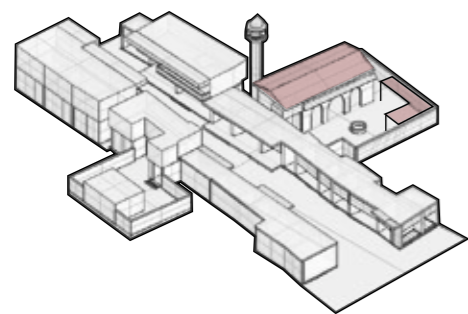
Kay Plan



Photo: Kamel Jaber

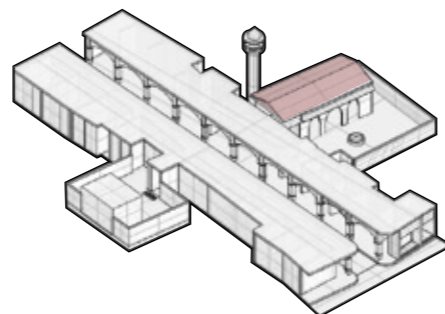


1970'



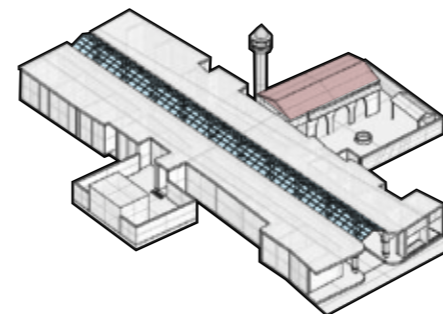
In the 70's, the souq comprised many shoe-making shops, with residential first floors. The central axis was exclusively pedestrian.

2000'



In 2006, the souq was severely damaged by Israeli bombardment. It was renovated in 2008 with Iranian funding. Arches on the facade were deployed to manufacture authenticity.

2026



In 2010, a steel-glass frame roof was added. It's now dominated by pastry and grocery/mouneh shops, one artisanal units, and a few vacant shops.

CONCEPT

Souq el Serail is envisioned as a productive socio-economic and cultural segment of the proposed economic spine.

Design Strategies & Action Plans

Enhance memory and the continuity of socio-spatial/ cultural/ economic practices

Action Plans

- Create spaces for spontaneous social encounters
- Introduce a productive function of socio-cultural value

Introduce local production and support economic independence and vitality

Action Plans

- Accommodate capacity-building workshops in the old souq's vacant shops
- Create spaces for domestic agricultural practices

Enhance Walkability /Pedestrianization

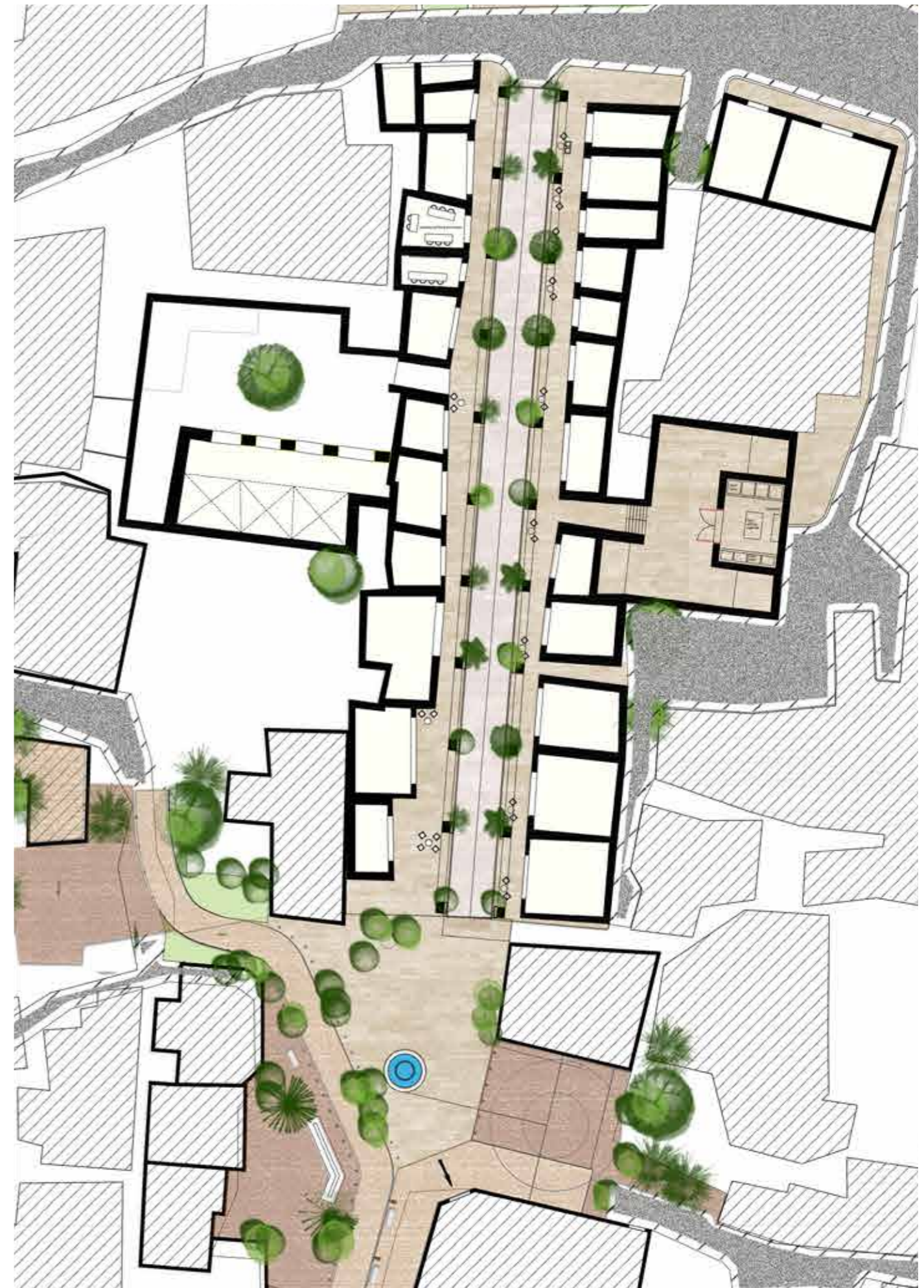
Action Plans

- Pedestrianize the old souq
- Inject greenery to enhance micro-climates

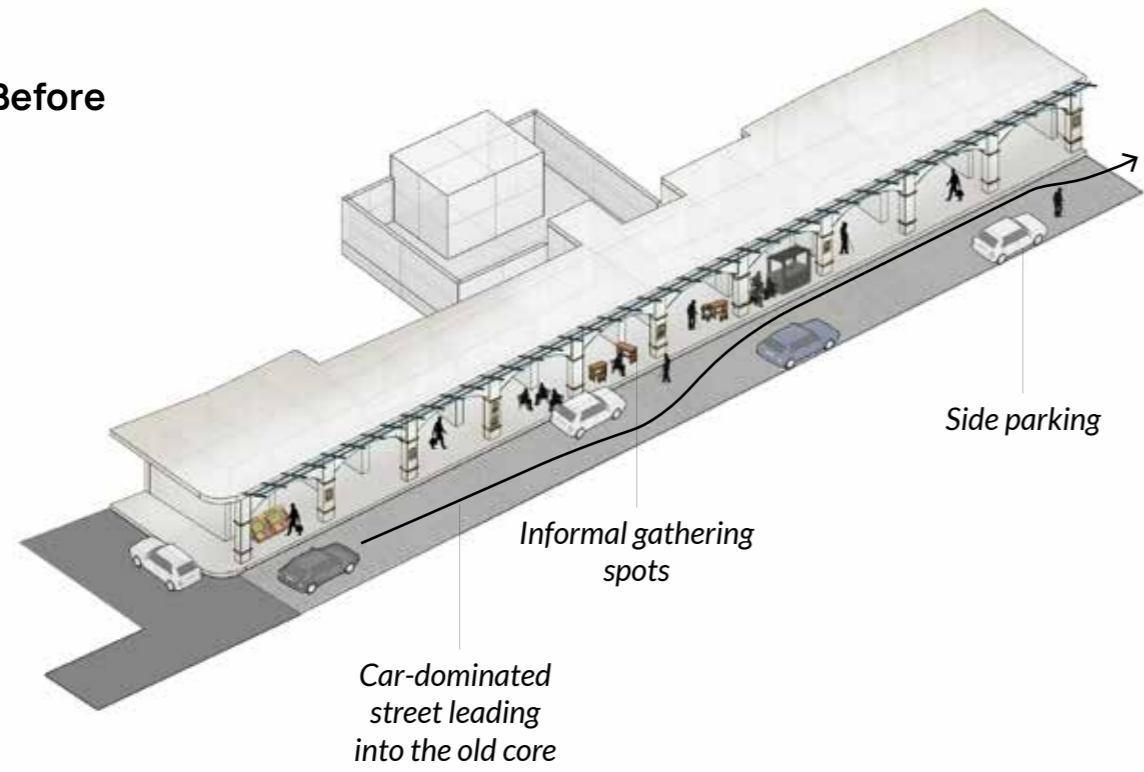
Promote Inclusivity

Action Plans

- Create semi-private spaces for women
- Provide the space with necessary services (water, lighting...)

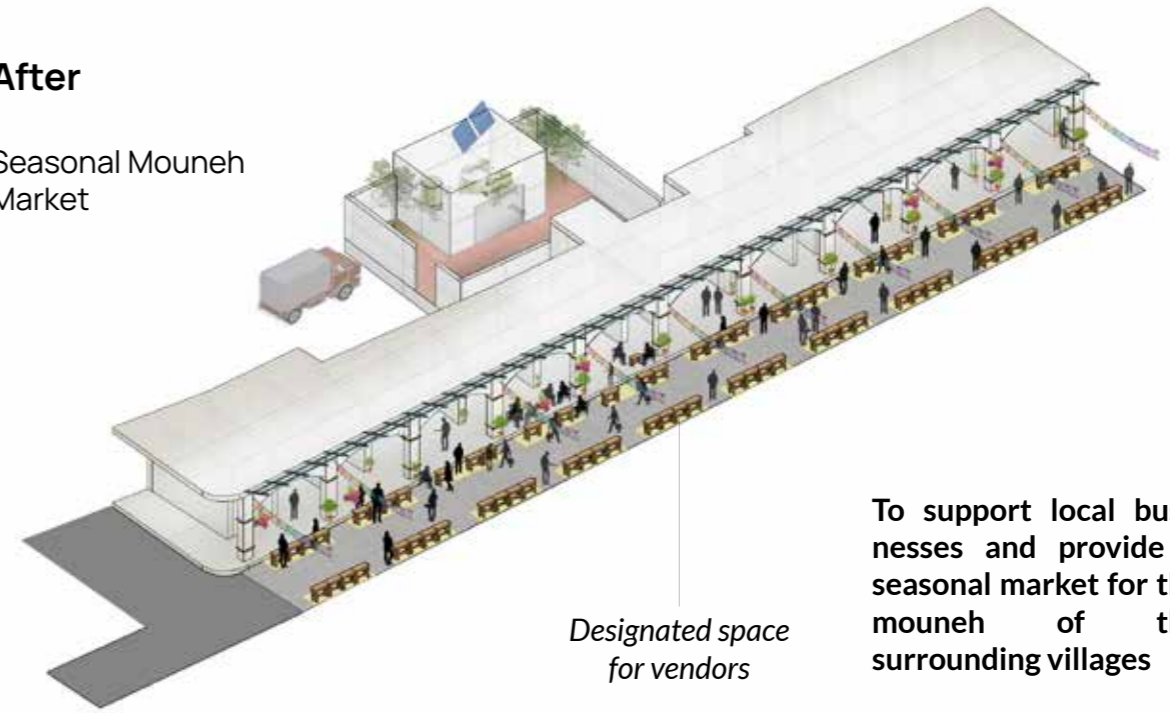


Before



After

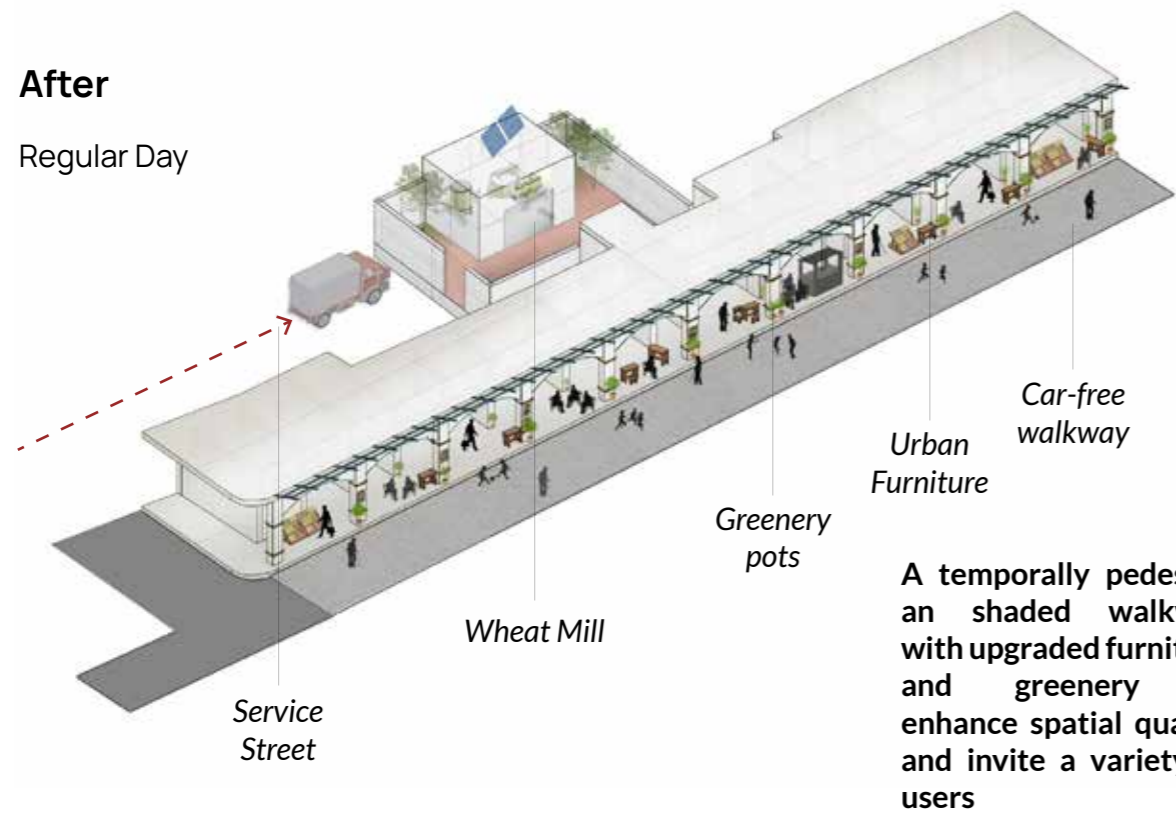
Seasonal Mouneh Market



To support local businesses and provide a seasonal market for the mouneh of the surrounding villages

After

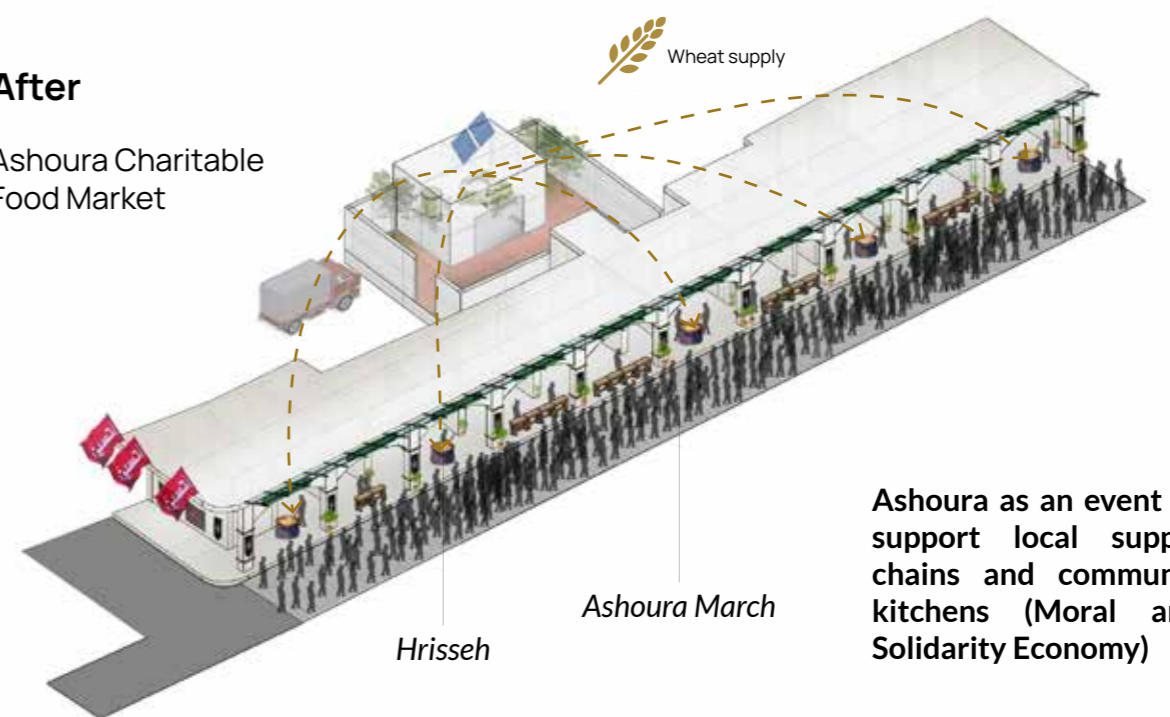
Regular Day



A temporally pedestrian shaded walkway with upgraded furniture and greenery to enhance spatial quality and invite a variety of users

After

Ashoura Charitable Food Market



Ashoura as an event to support local supply chains and communal kitchens (Moral and Solidarity Economy)

THE SOUQ OF NABATIYEH

More than a commercial hub

