

CONCEPT

The Kocaeli Körfez Pavilion is designed as a strategic hub located at the intersection of sea, land, and rail networks.

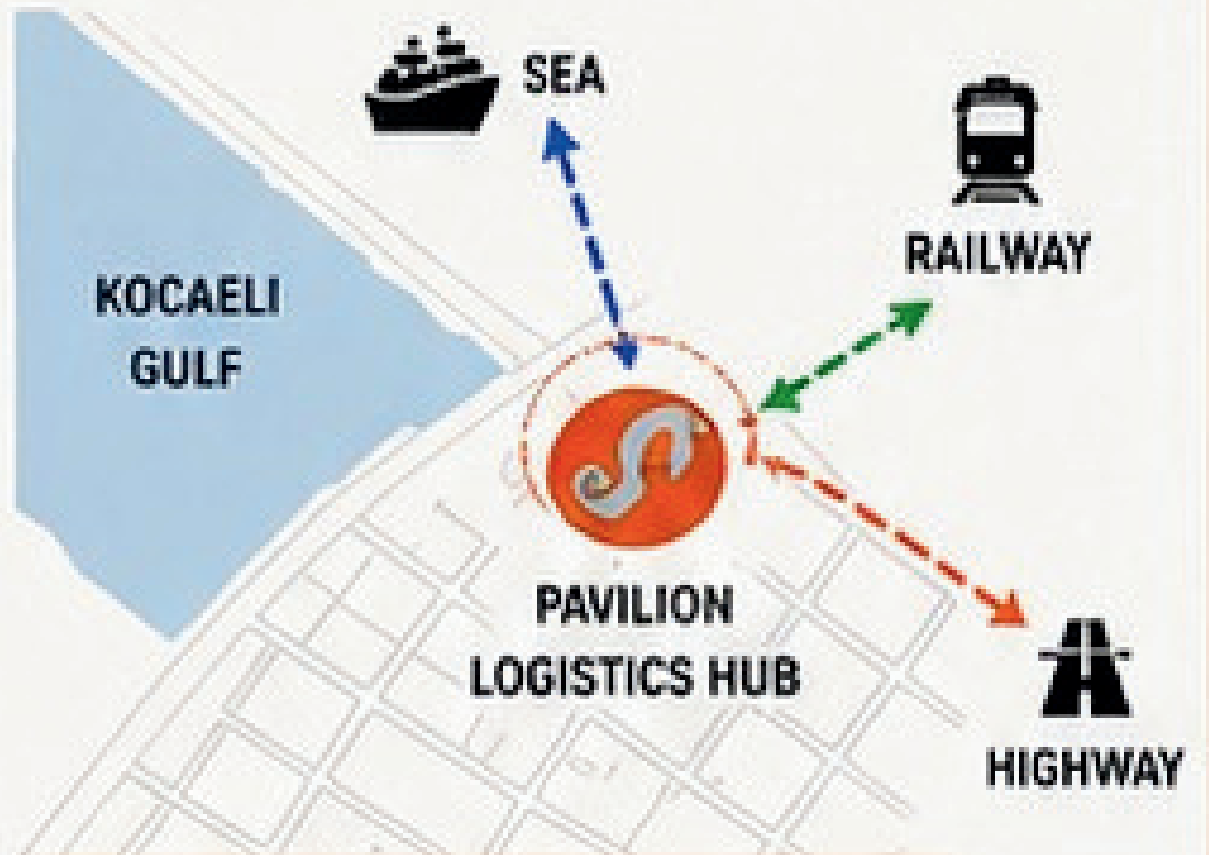
It is envisioned as a logistics node that minimizes the impact of disasters on transportation routes and ensures the uninterrupted flow of aid and supplies.

The pavilion enhances the efficiency of logistics operations, coordination, and information flow during emergencies.

STRONG IN CRISIS, FAST IN RESPONSE, RESILIENT IN LOGISTICS.

2. SITE SELECTION AND WHY THIS LOCATION?

The pavilion is strategically located at the intersection of sea, land, and rail networks. The site is resilient to the impact of natural disasters on transportation routes and ensures uninterrupted access for aid and supplies.



- Sea Access**
Provides easy access for maritime transport and port operations.
- Rail Access**
Enables secure and continuous transport for bulk and critical supplies.
- Road Access**
Ensures fast distribution to surrounding regions and the city network.



SITE PLAN 1/500

NATURAL VENTILATION
The operable glazing and roof system enable natural ventilation.

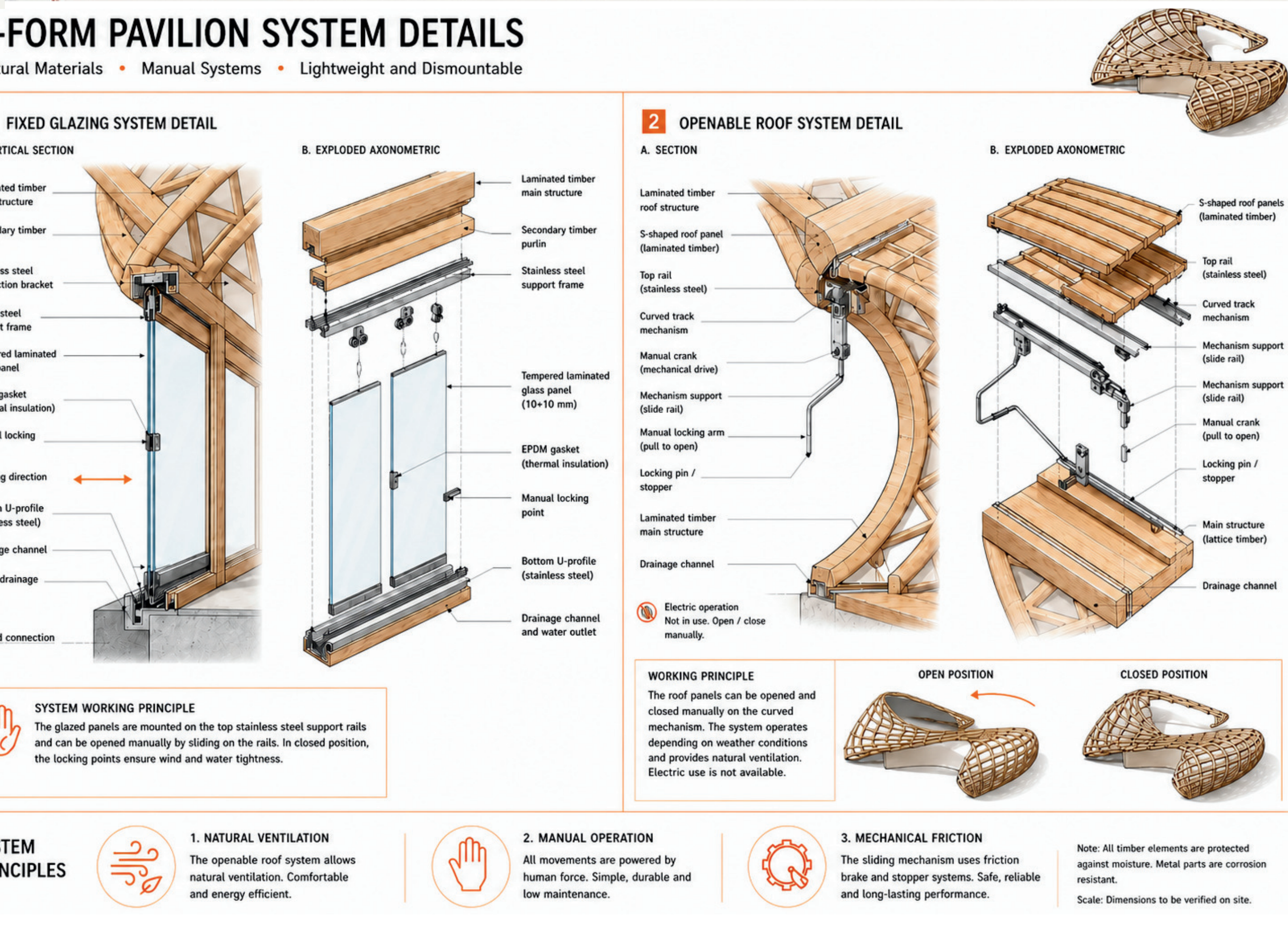
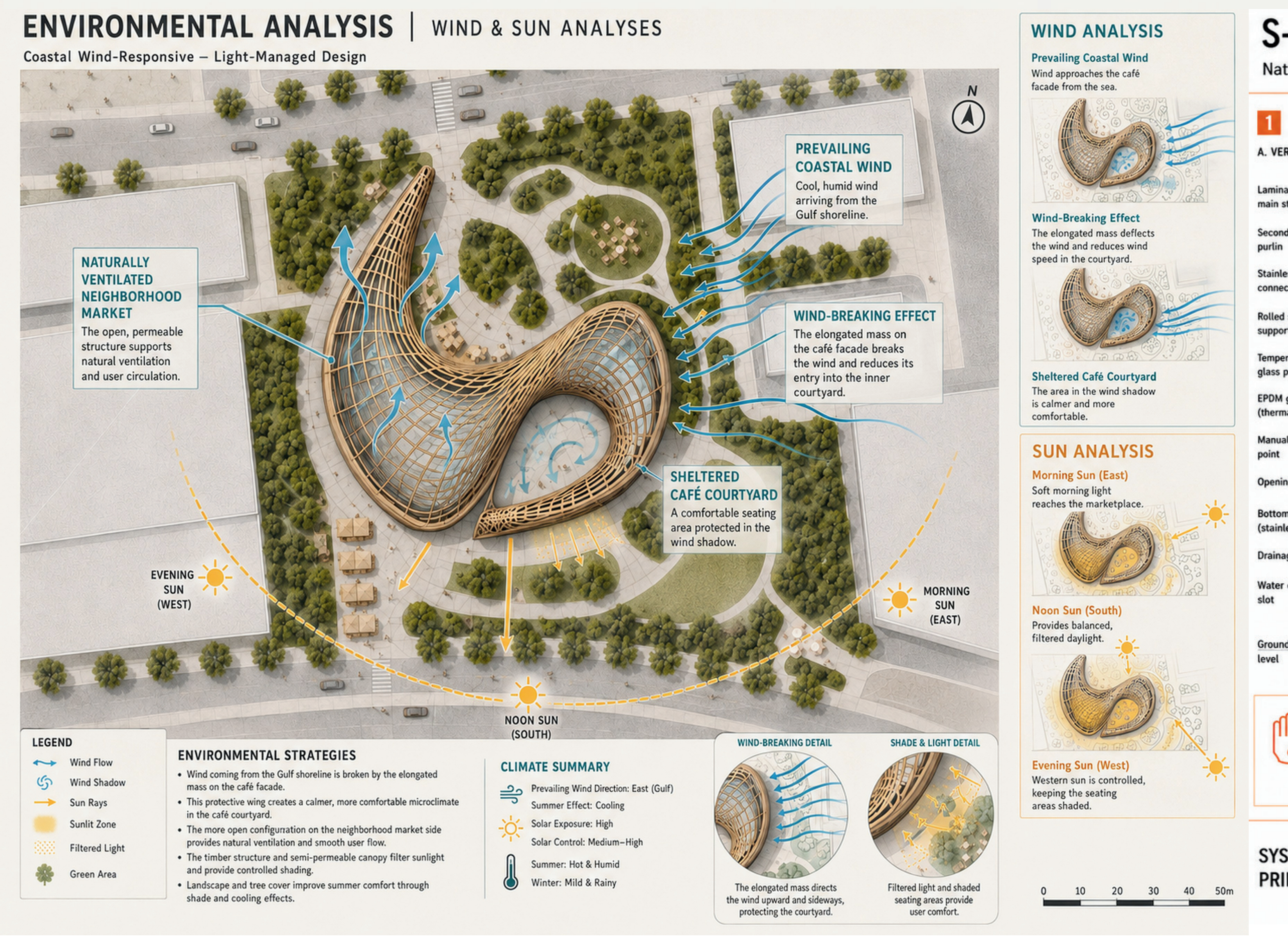
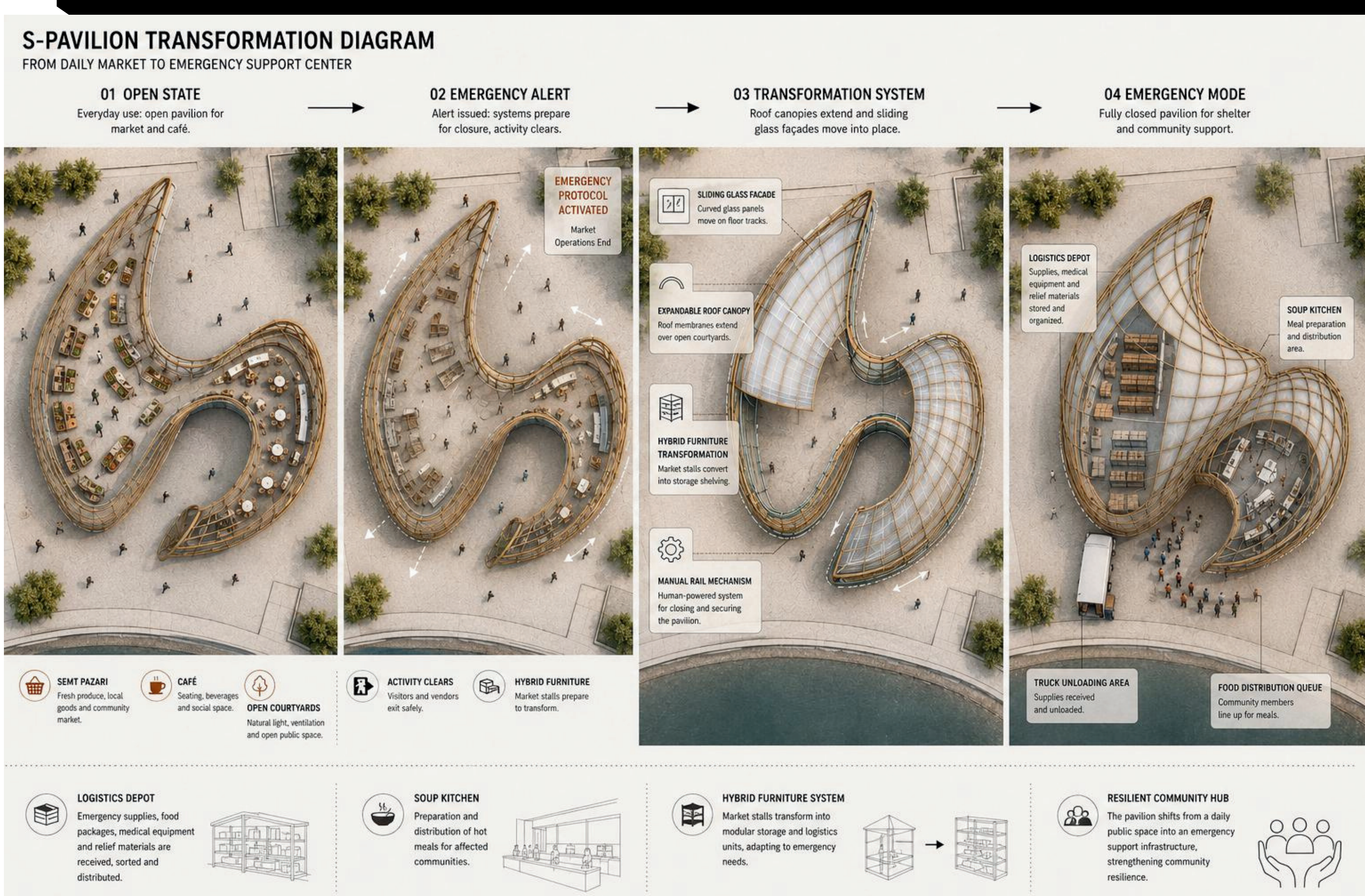
MANUAL OPERATION
All mechanisms are designed for manual use in emergencies and off-grid conditions.

MECHANICAL FRICTION
The system uses friction-based mechanical components for safe performance.

SAFE AND ACCESSIBLE
The structure and systems are designed for safe and easy operation by all users.

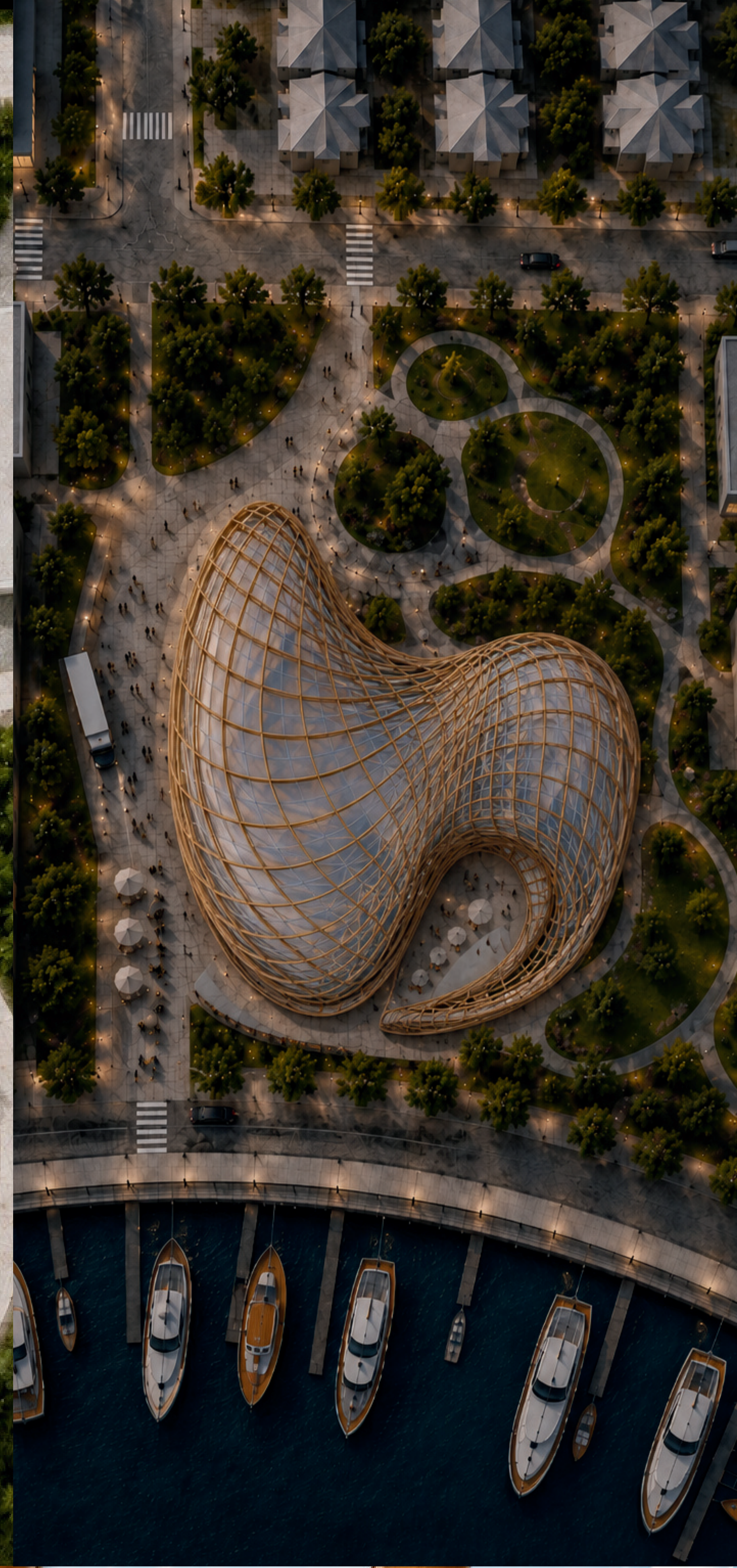
DURABLE MATERIALS
Timber structure ensures sustainability and high performance.







PLAN 1/100



NORMAL TIME SECTION 1/100



DISASTER TIME SECTION 1/100

