

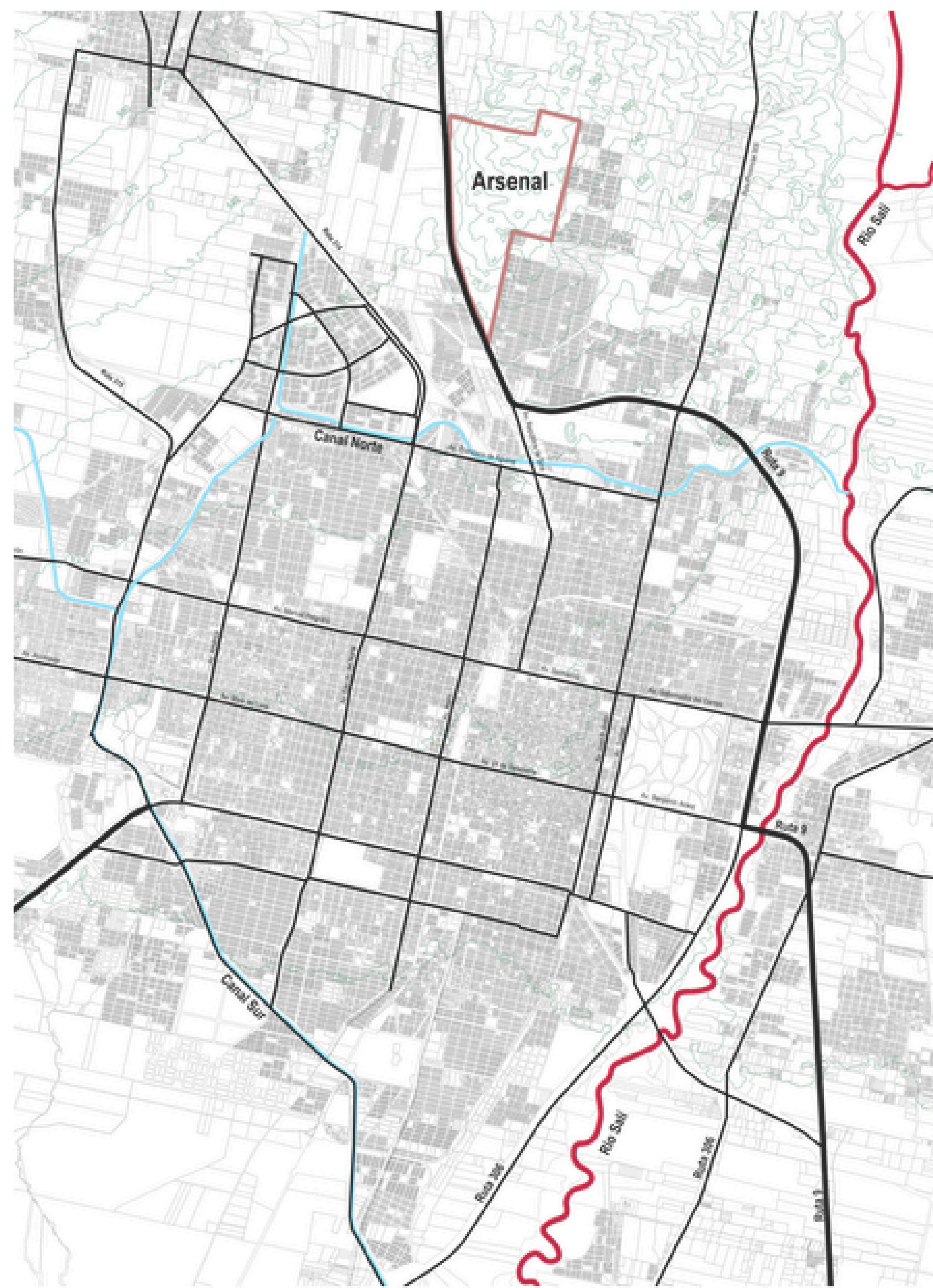


FROM MEMORY TO HOPE
A Landscape of Remembrance and Transmission
San Miguel de Tucuman, Argentina

Urban Park of Memory San Miguel de Tucuman, Argentina



01 URBAN CONTEXT



Located in San Miguel de Tucumán, northwestern Argentina, the Arsenal (Golf 9) site occupies a strategic position between the urban fabric and a preserved forest landscape. Beyond its ecological value, the site carries a profound historical significance, making it a place where memory, nature and community converge.

02 Memory trace of the past



The site contains layers of collective memory linked to the former military complex and the unresolved histories associated with the dictatorship period. These traces form the foundation of the project's narrative

03 FOREST AND ECOLOGY



the Site presents one of the largest urban forest areas in the city. Its biodiversity, vegetation cover and ecological continuity provide an essential environmental framework for the project.

04 CONNECTIONS AND ACCESS



The site is bordered by major urban infrastructures and connected to surrounding neighborhoods through a network of local roads. However, public access remains limited and the interior of the site is largely disconnected from everyday urban life.



1976

Military coup: confirmed, start of the Argentine civic-military dictatorship

1976-1978

Thousands of people are illegally detained, Tortured and Disappeared in Clandestine Centers

1977

The Population Organizes and Resistes The Cry "Where are They ?" Is Raised

1983

Democracy is Restored The search For Truth And Justice Begins

2009

1200 meters from Hangar No9, five mass graves were found, containing firearm projectiles and clothing remnants.

Today

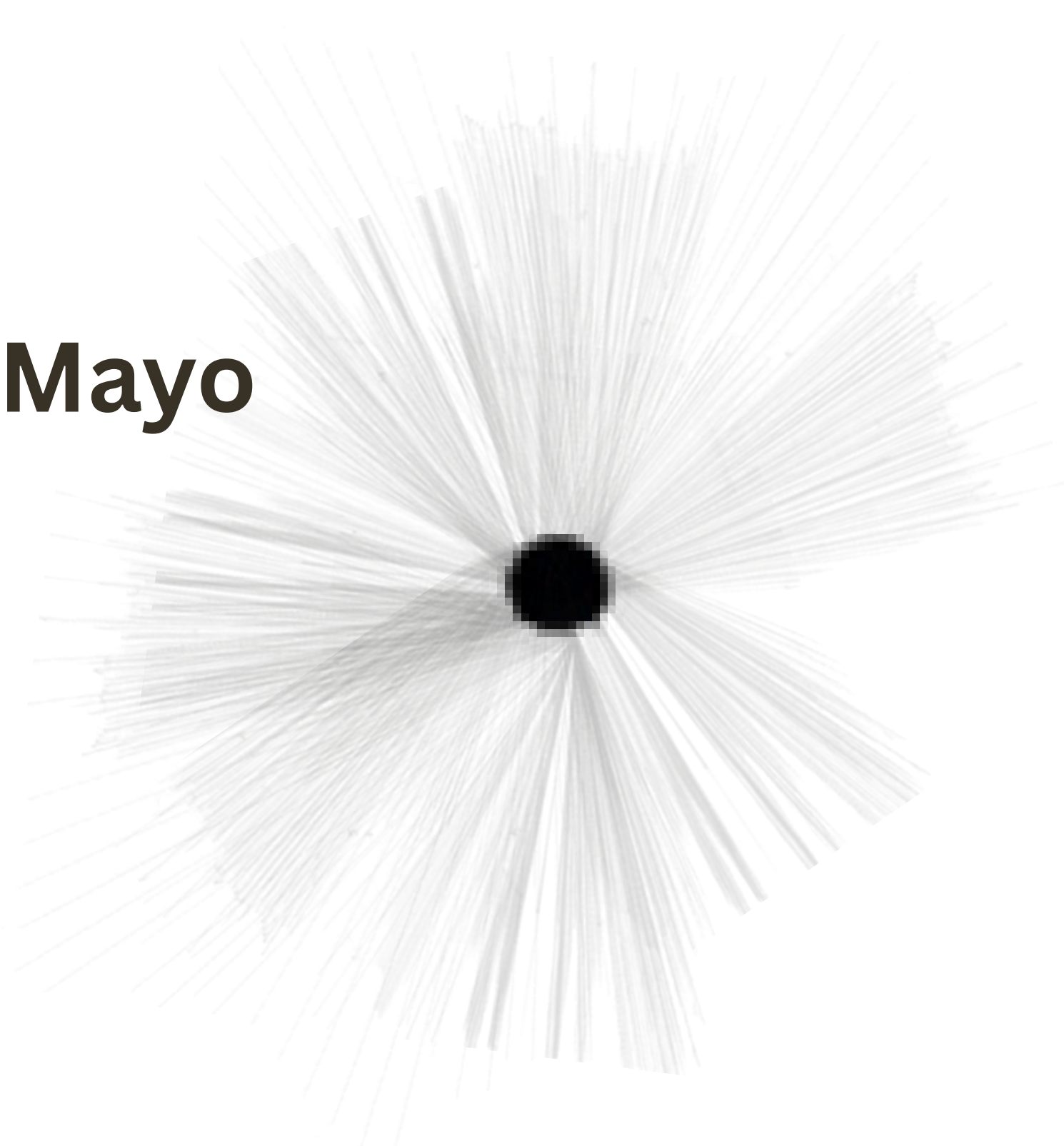
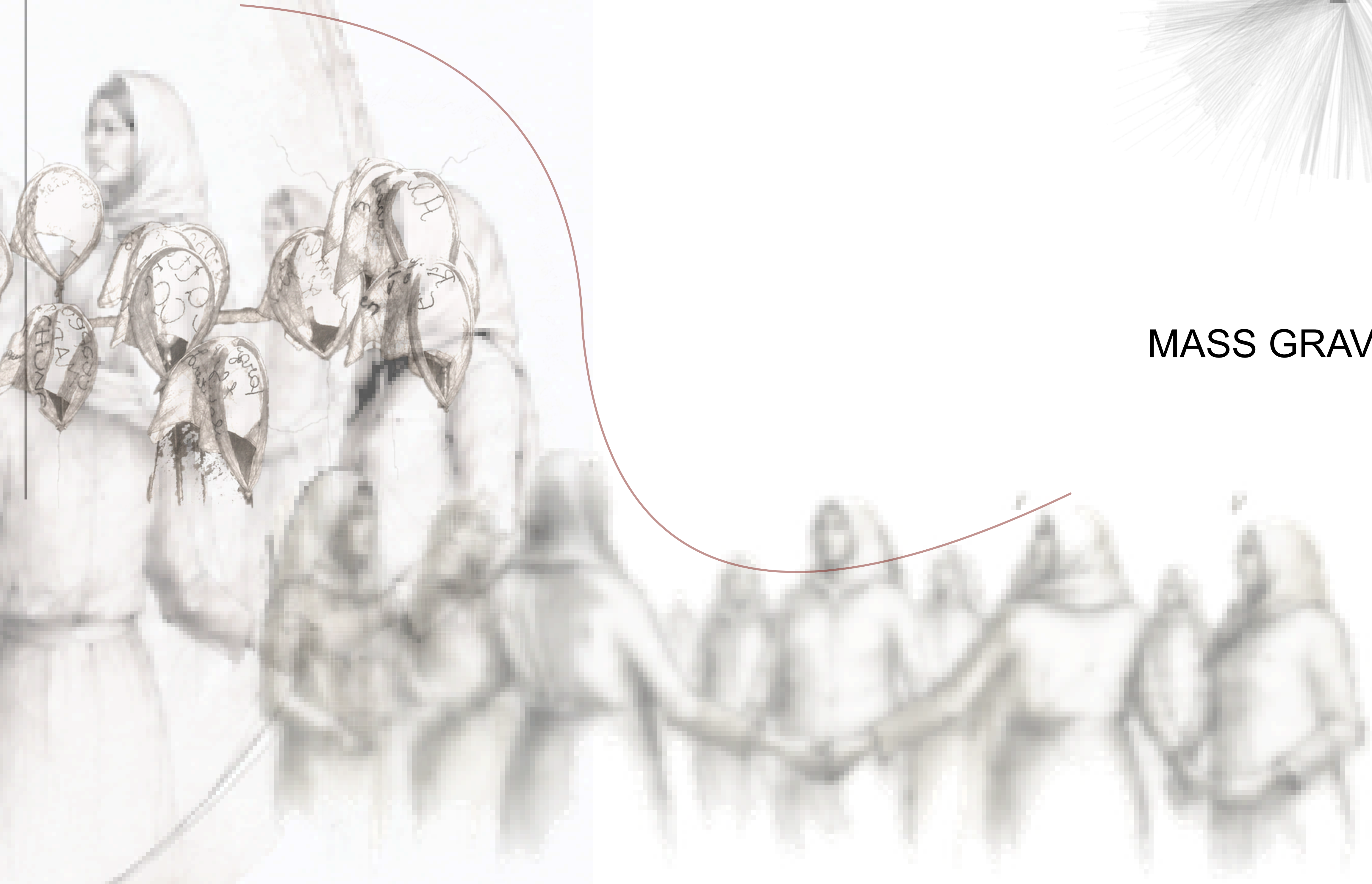
Memory Site Preserving traces, transmitting stories and honoring those who disappeared.



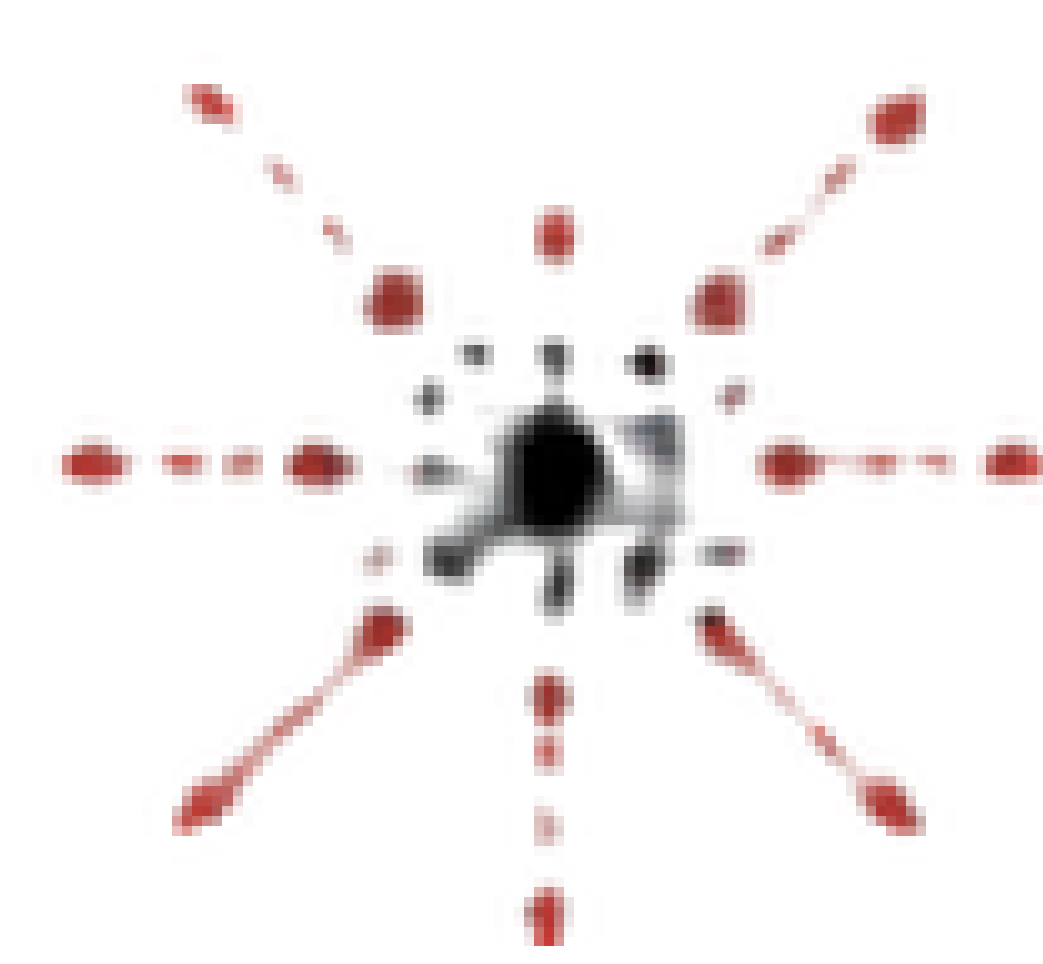
A 46 años del Golpe Militar: cómo se formaron las Madres de Plaza de Mayo

● the detention between 1976 and 1978.

● April 30, 1977 First meeting of the mothers, Plaza de Mayo



MASS GRAVES



COLLECTIVE MEMORY



THE PATH OF REMEMBRANCE



NAMES WALL



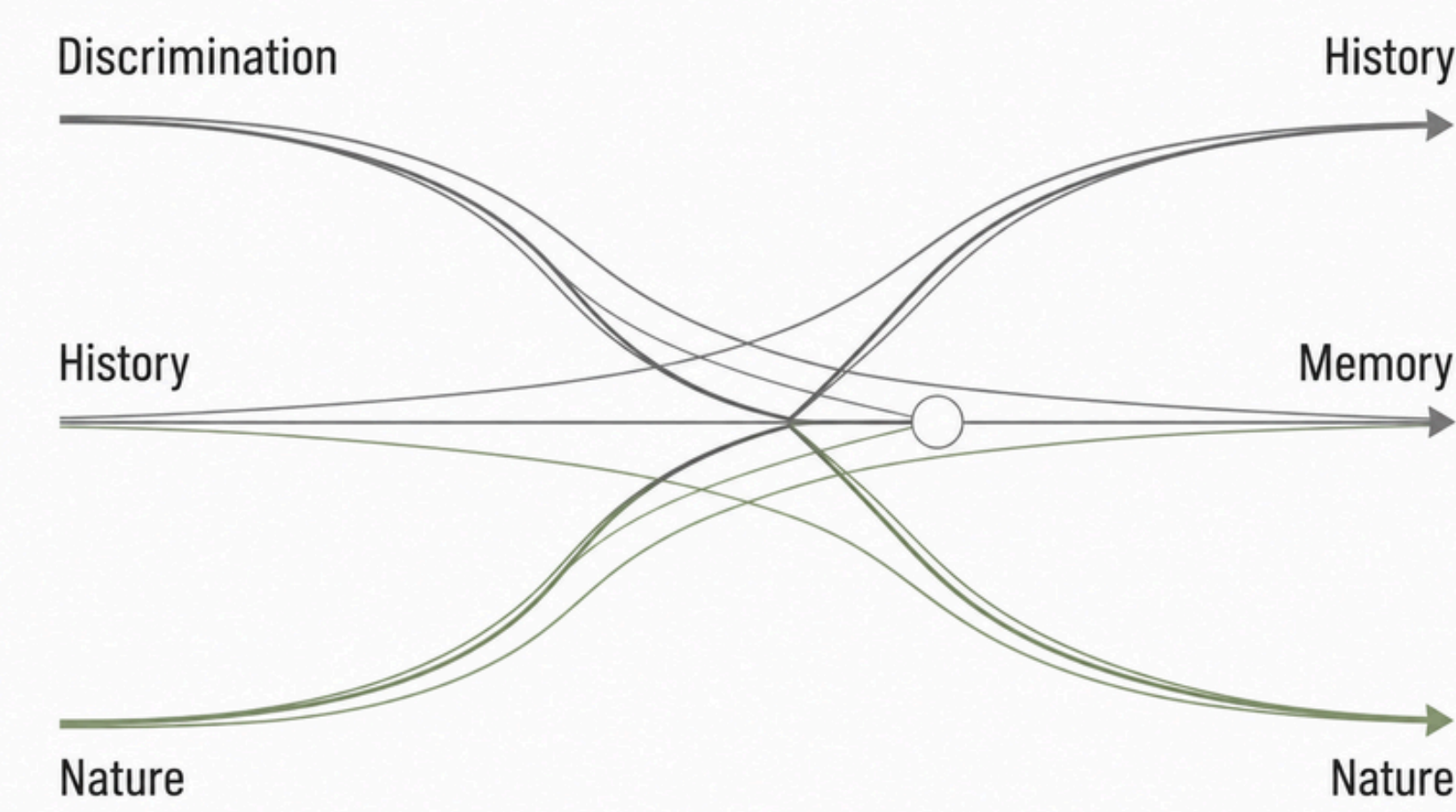


Territory

CIVIC COMPLEX

1977

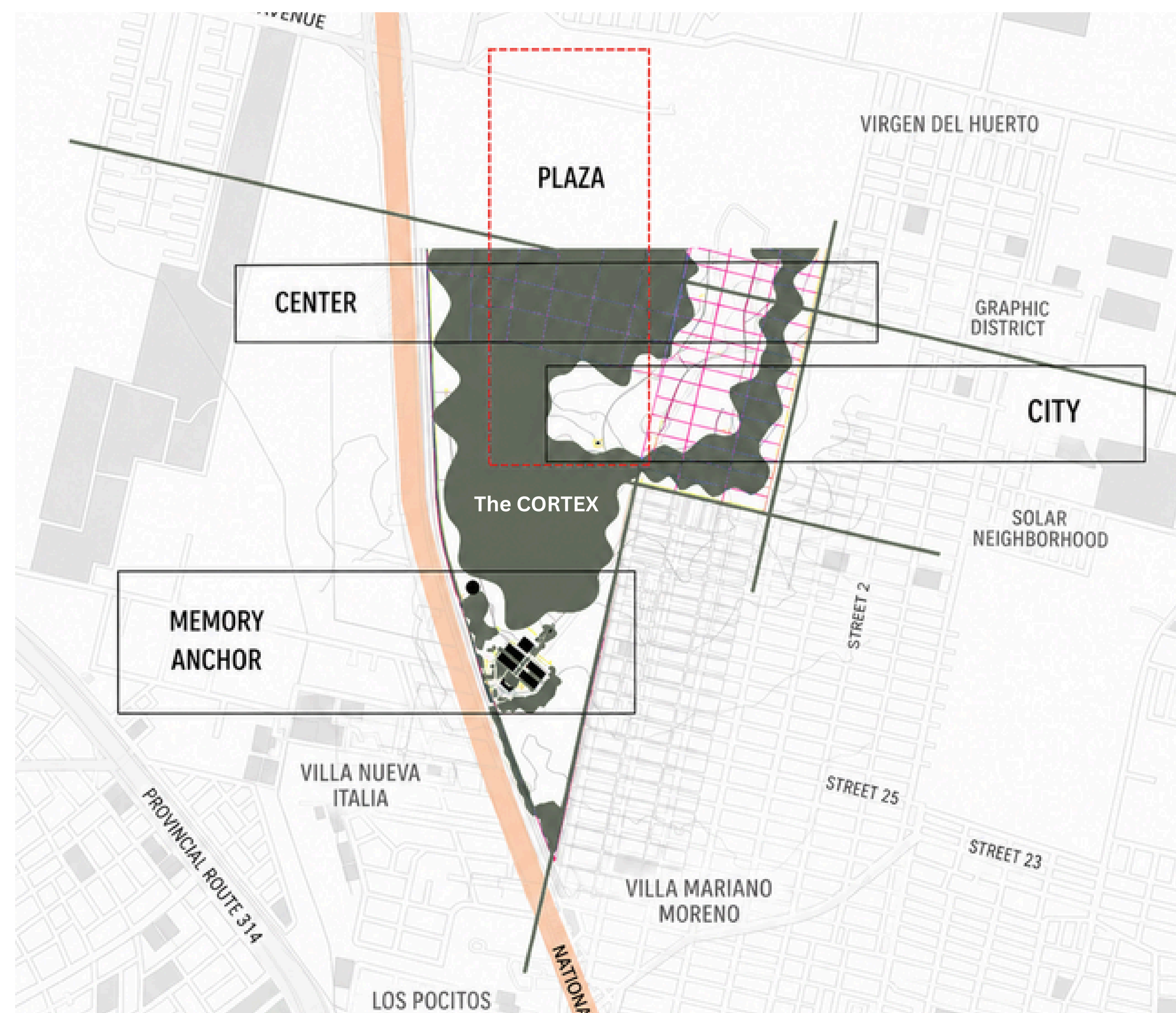
GENERATIVE FORCES



THE LESIERER CITY PARK BORDER AND PARK MEMORY ENTITIES

CITY EXTENSION AND URBAN PEDESTRIAN AND VEHICLE CONNECTION

SITE - CITY - CIVIC COMPLEX - PLAZA



The project positions itself at the threshold between the consolidated urban fabric (CITY) and **the military memory layer (MEMORY / ANCHOR)**, forming a territorial pivot between two distinct urban temporalities.

The central PLAZA operates as the primary connection node, articulating pedestrian flows between the historic grid of Villa Nueva Tucumán to the south and the major structural roadways to the north.

The CORTEX – a **dense vegetated buffer zone** – mediates and filters the transition between the open public realm and the interior programmatic fragments, establishing a threshold **promenade between city and memory**.

Connection axes radiate outward from the plaza toward surrounding neighborhoods (Villa Muñecas, Villa Urquiza), weaving the site back into the existing urban network through visual alignments and continuous pedestrian linkages.

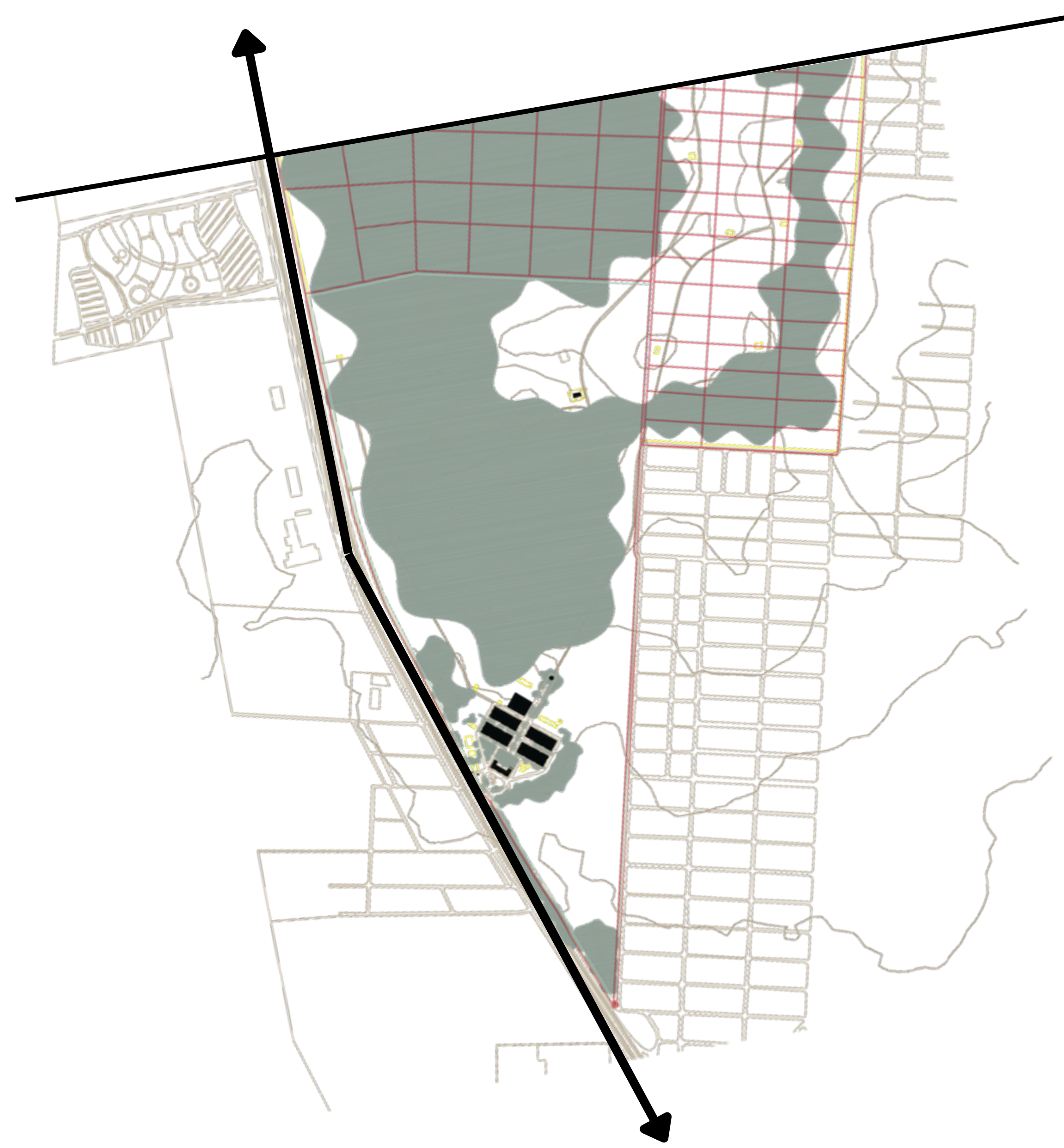
INTERVENTION STRATEGY

01 PRESERVE

Protect the Living Forest

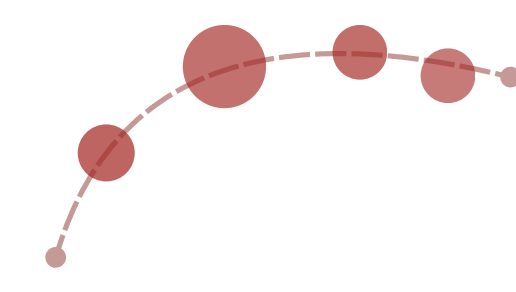


The forest is not only an ecological asset; it is a silent witness to history. Preserving its continuity safeguards both biodiversity and memory.

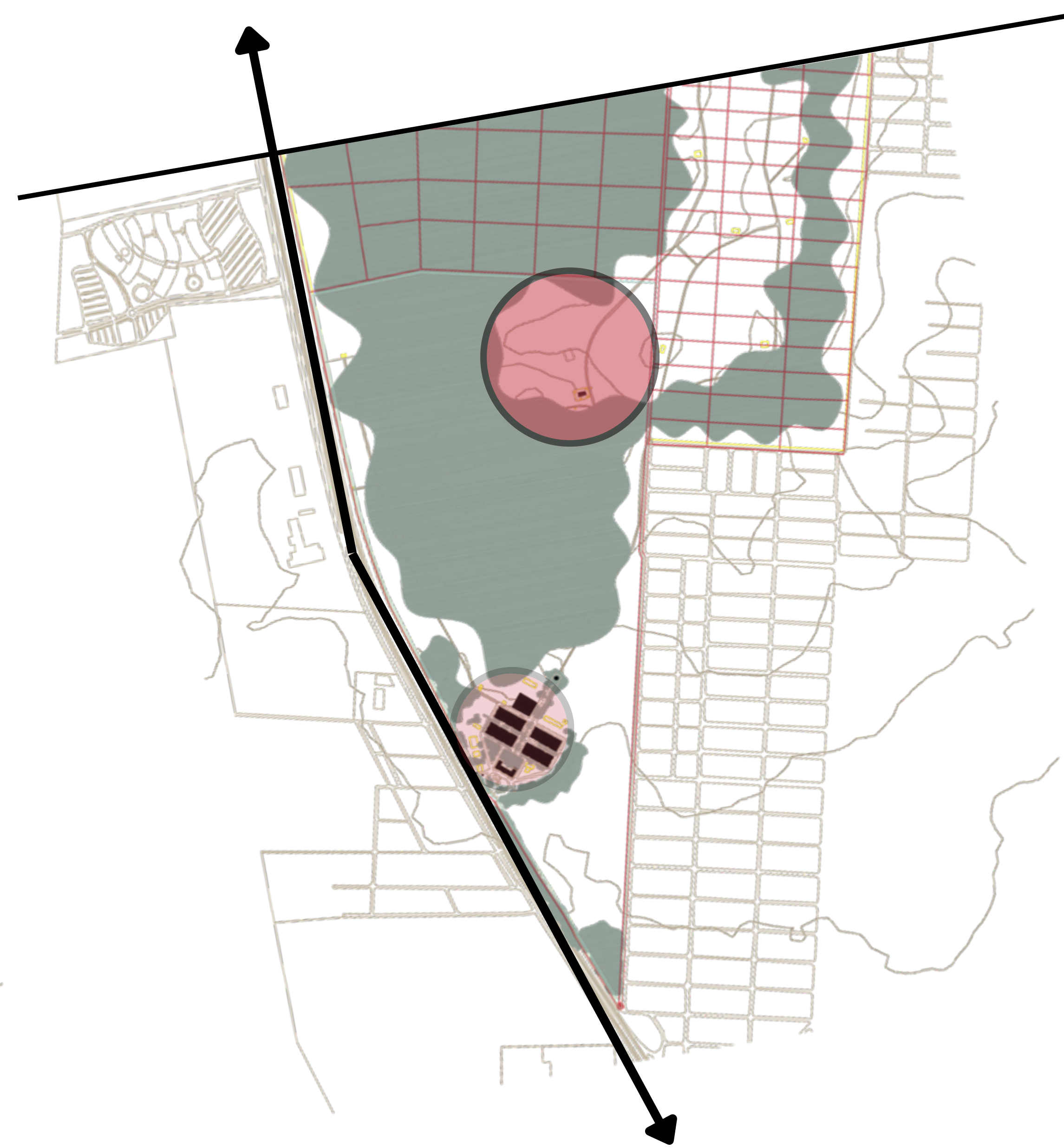


02 REVEAL

Bringing Absence into Presence



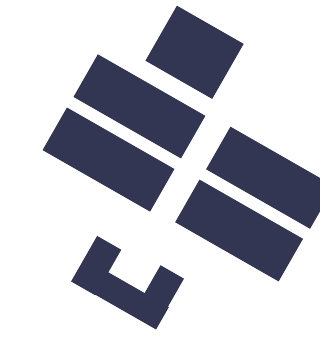
Former barracks are reactivated as an Interpretation Center and Cultural Hub, transforming a place of control into a place of knowledge, dialogue and transmission



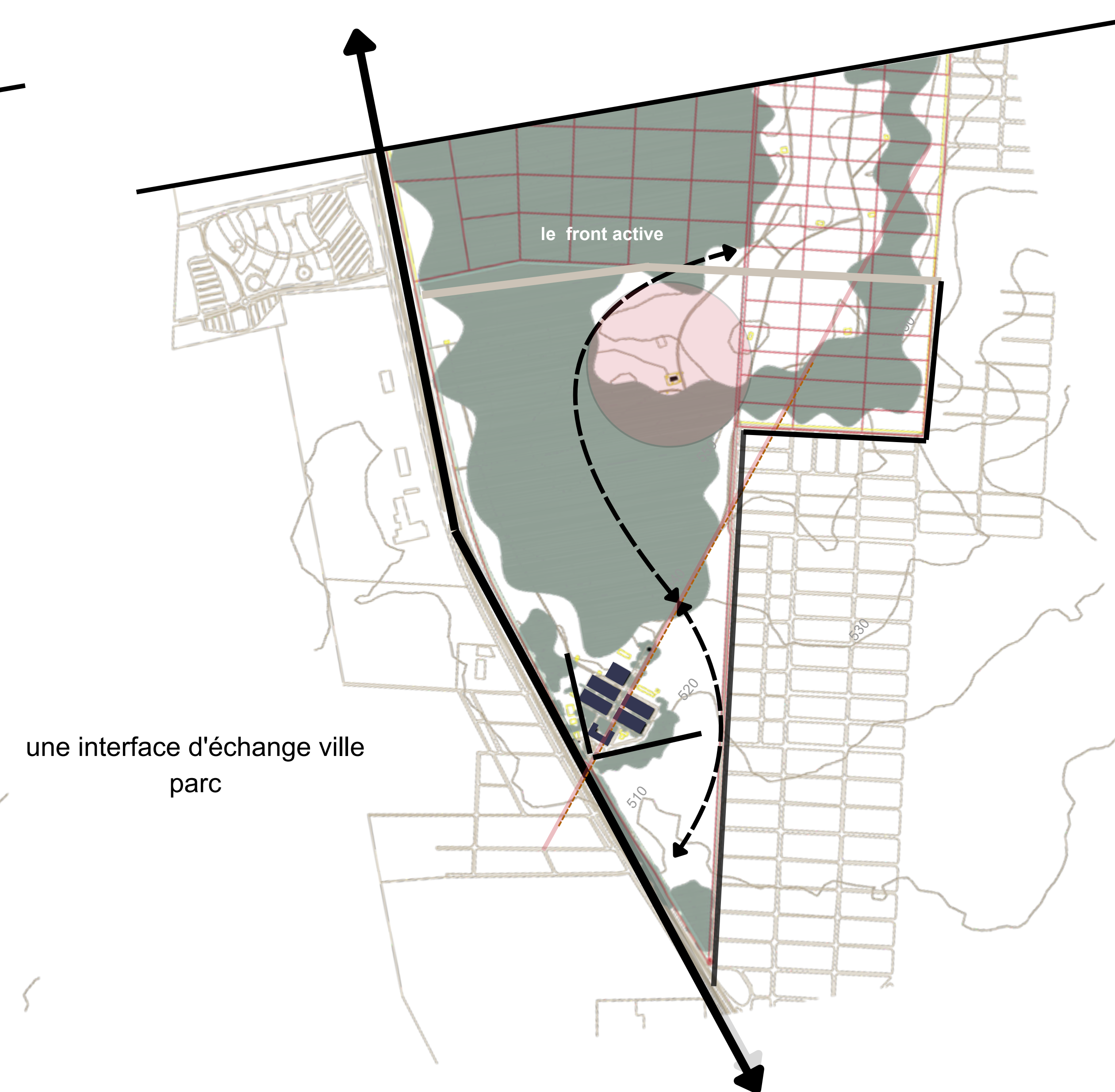
 Memorial square

03 TRANSFORM

From Barracks to Knowledge



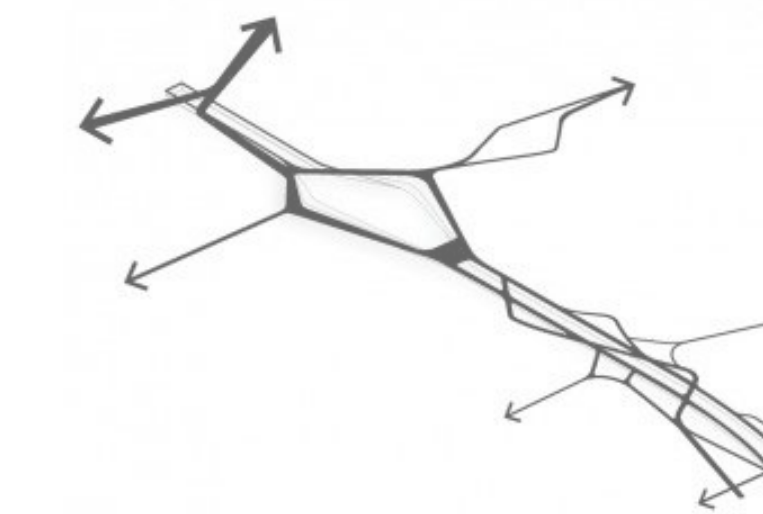
Former barracks are reactivated as an Interpretation Center and Cultural Hub, transforming a place of control into a place of knowledge, dialogue and transmission



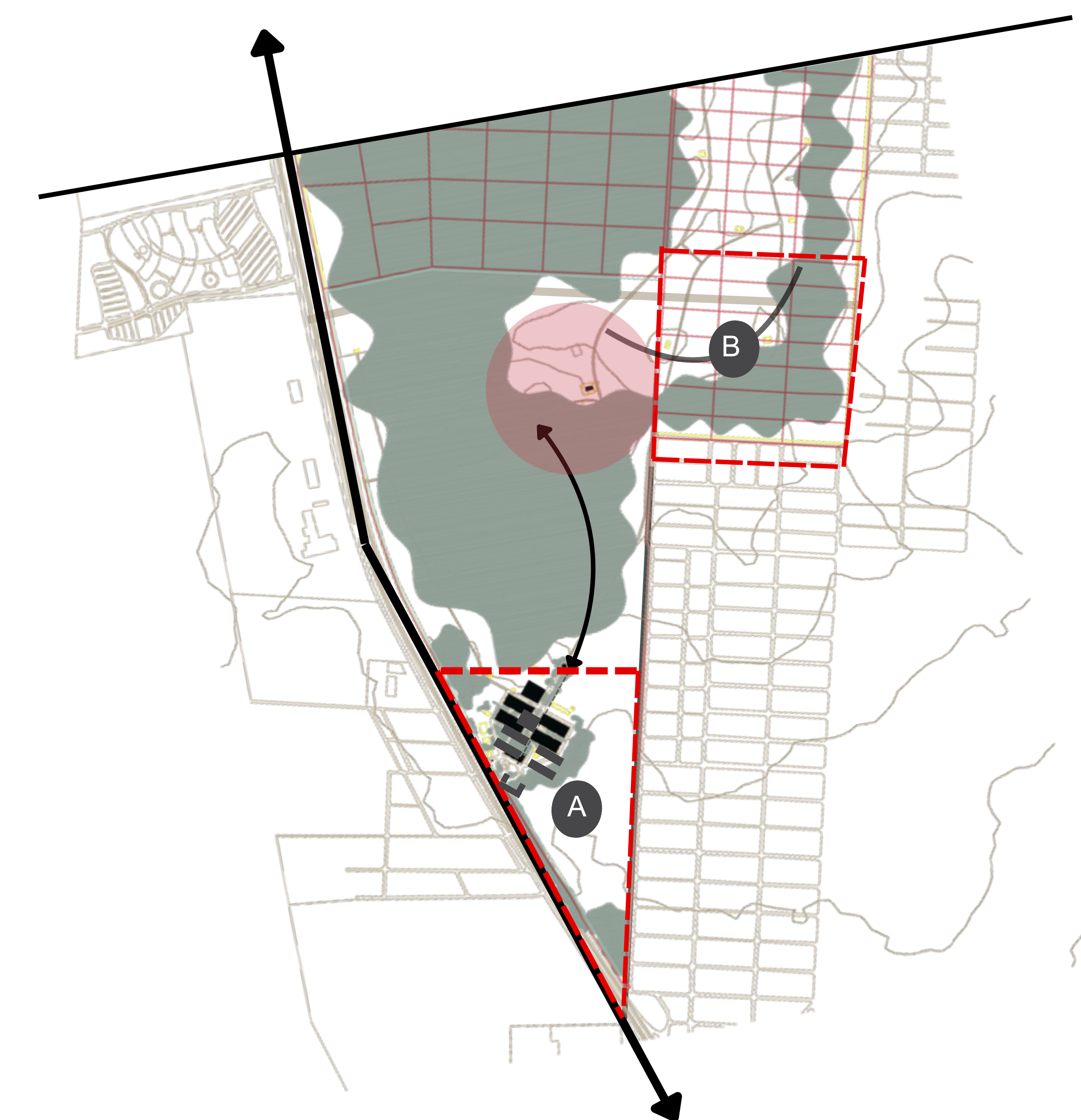
 Barracks

04 CONNECT

Connecting Life, Memory and Hope



Connected by the Memory Bridge, the cultural pole fosters collective life and artistic expression, while the educational pole ensures the transmission of memory, knowledge and hope to future generations



- The project transforms a former military site into a living landscape of remembrance. Through preservation, revelation, rehabilitation and connection, the intervention reactivates the site's ecological, historical and social value while creating new opportunities for collective engagement

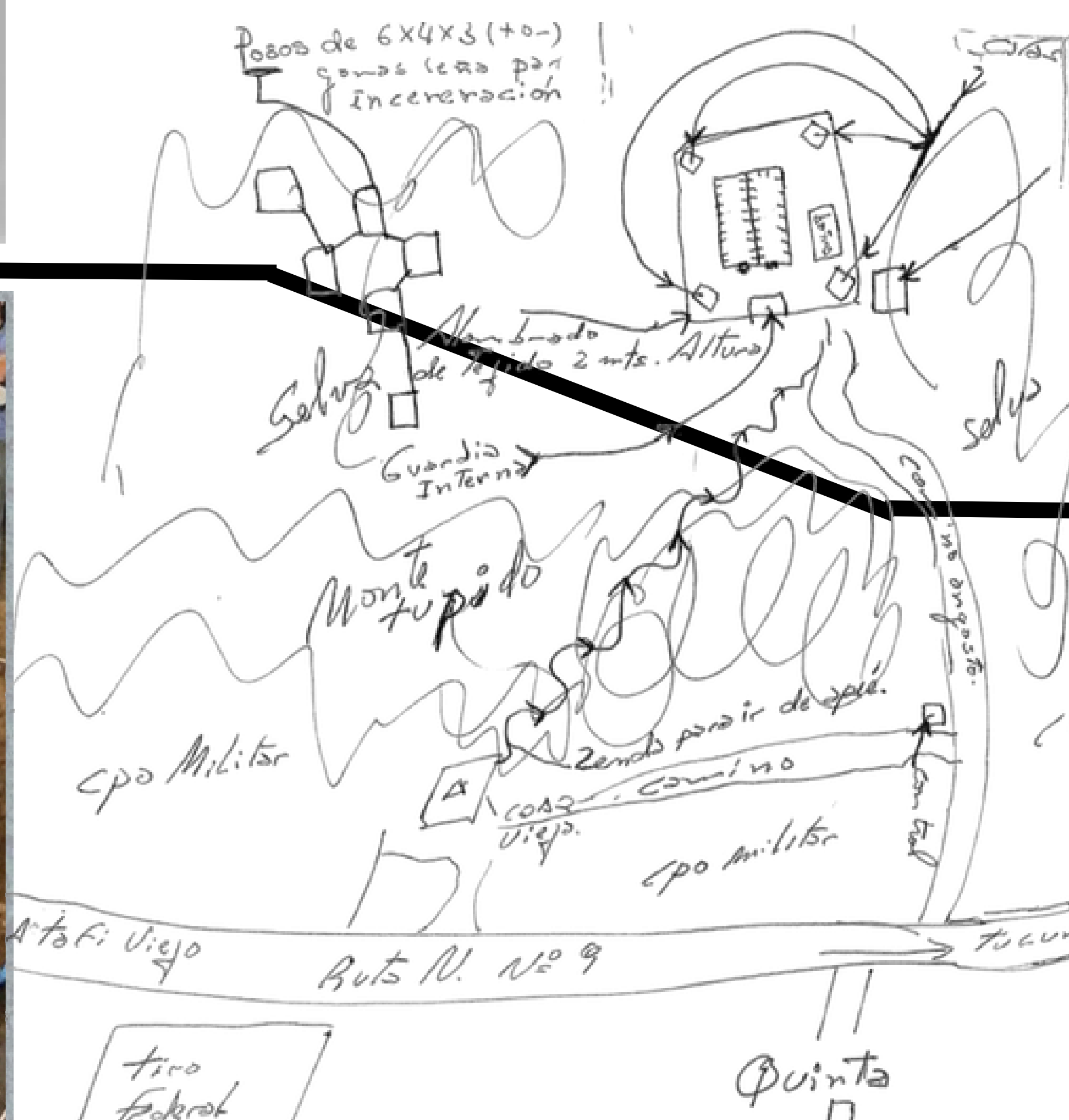
Sequential reading



Exit to a living garden.



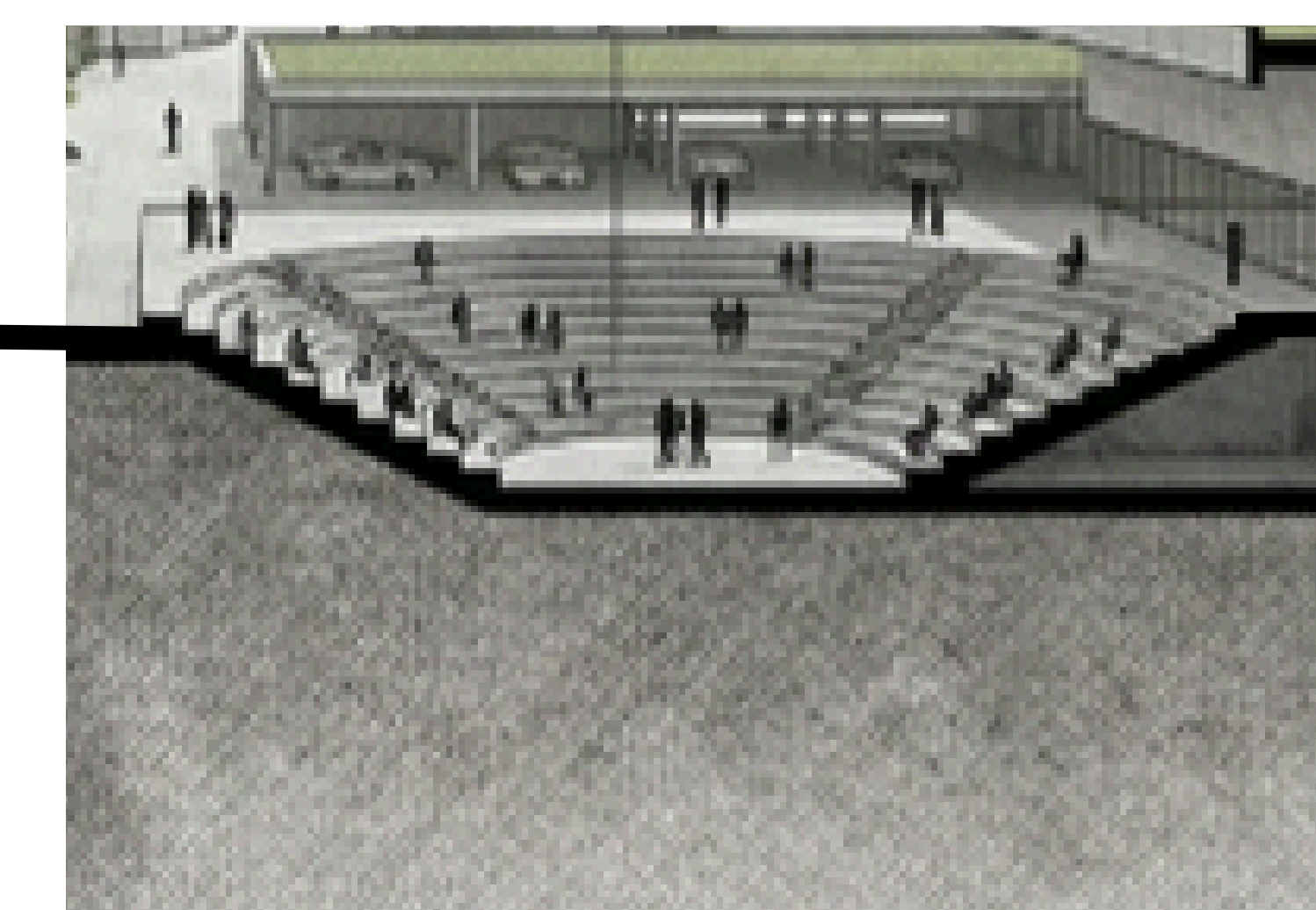
Discrimination



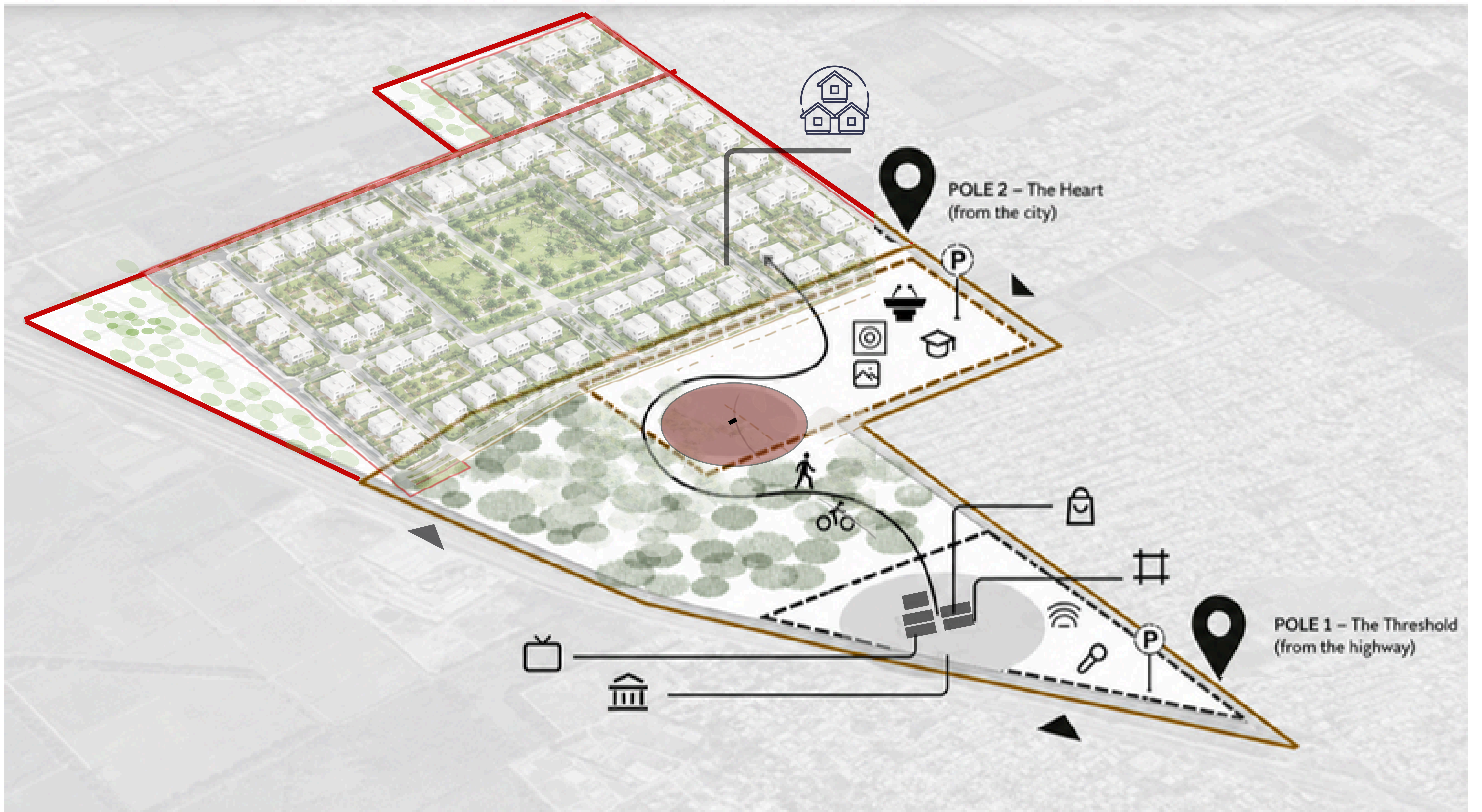
Sense of Place
Confrontation with absence.



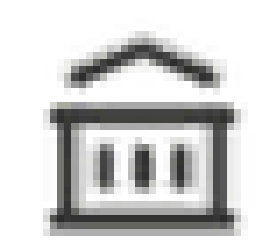
Presentation
Memorial walk



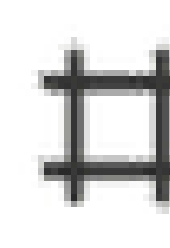
Gathering
Collective gathering.



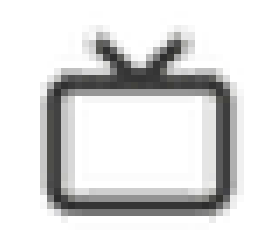
POLE 1 – The Threshold (from the highway)
Pole of entry, discovery, and gathering



Administration
1,000 m²



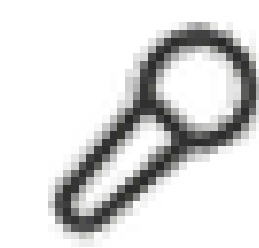
Historical Exhibition
Pavilion 2,000 m²



Immersive Audiovisual
Showroom 1,500 m²



Commercial Premises &
Services 500 m²



Concert / Recital Hall
4,000 m²



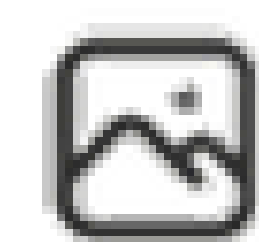
Amphitheater
1,000 m²



Main Parking
18,500 m²



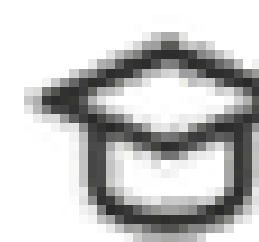
POLE 2 – The Heart (from the city)
Pole of memory, transmission, and civic debate



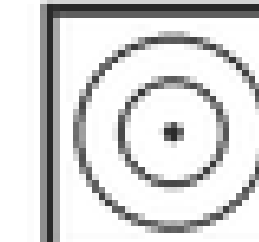
Memorial Art
Gallery 1,000 m²



Conference Room
Complex 1,500 m²



Classroom Complex
1,500 m²



Memory Plaza
3,800 m²



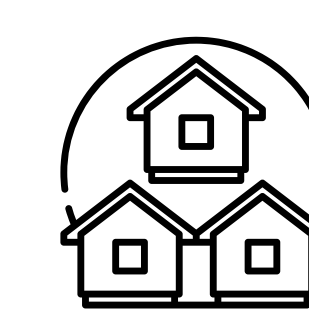
Secondary Parking
4,500 m²



Acces



Forest

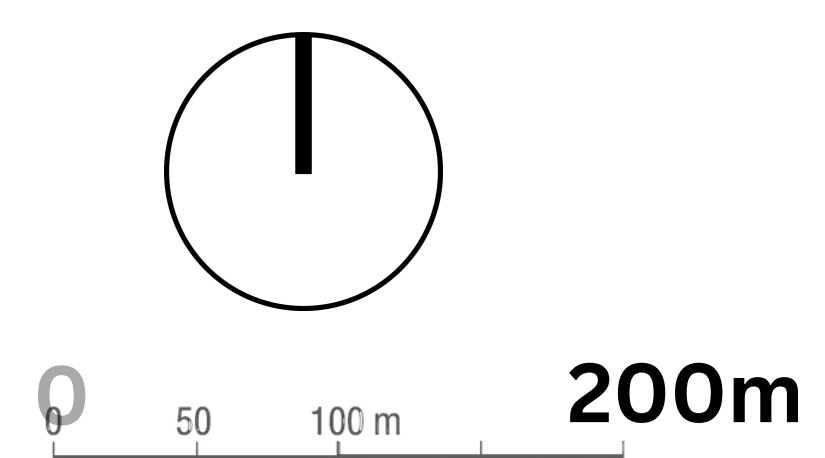


Residential and
Commercial Area



- ① Administration
- ② Historical Exhibition Pavilion
- ③ Immersive Audiovisual Showroom
- ④ Commercial & Service Spaces
- ⑤ Concert Hall / Recital Hall
- ⑥ Amphitheater
- ⑦ Main Parking
- ⑧ Community garden
- ⑨ Asociacion de Bomberos

- ⑩ Memory Gateway
- ⑪ Conference Room Complex
- ⑫ Memorial Art Gallery
- ⑬ Memory Plaza
- ⑭ Classroom Complex
- ⑮ Neighborhood soccer field
- ⑯ Secondary Parking
- ⑰ Residential area





Hope

14 EDUCATIONAL CENTER



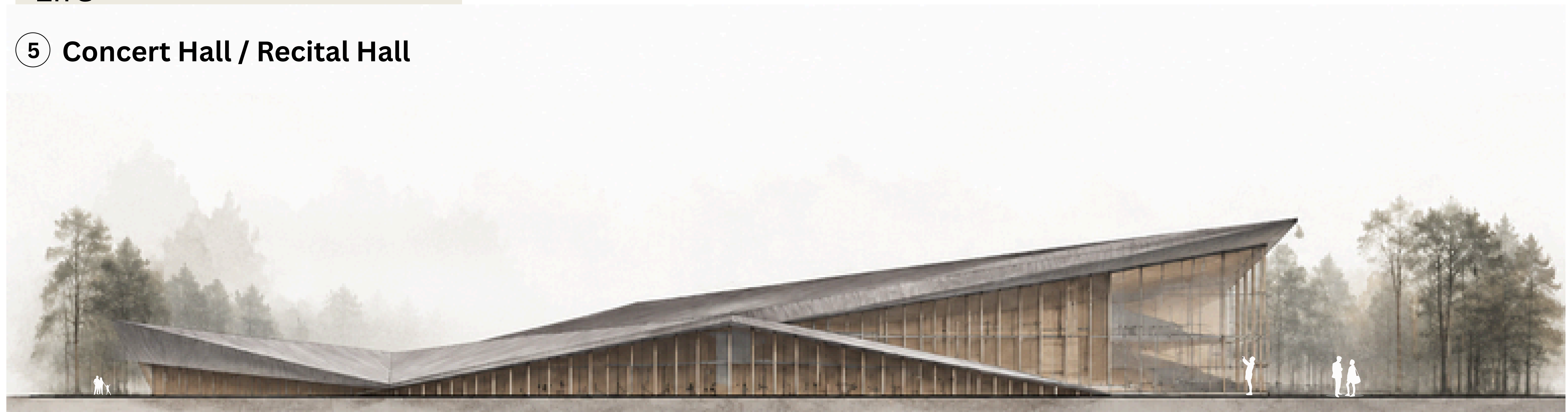
Memory

10 Memory Gateway



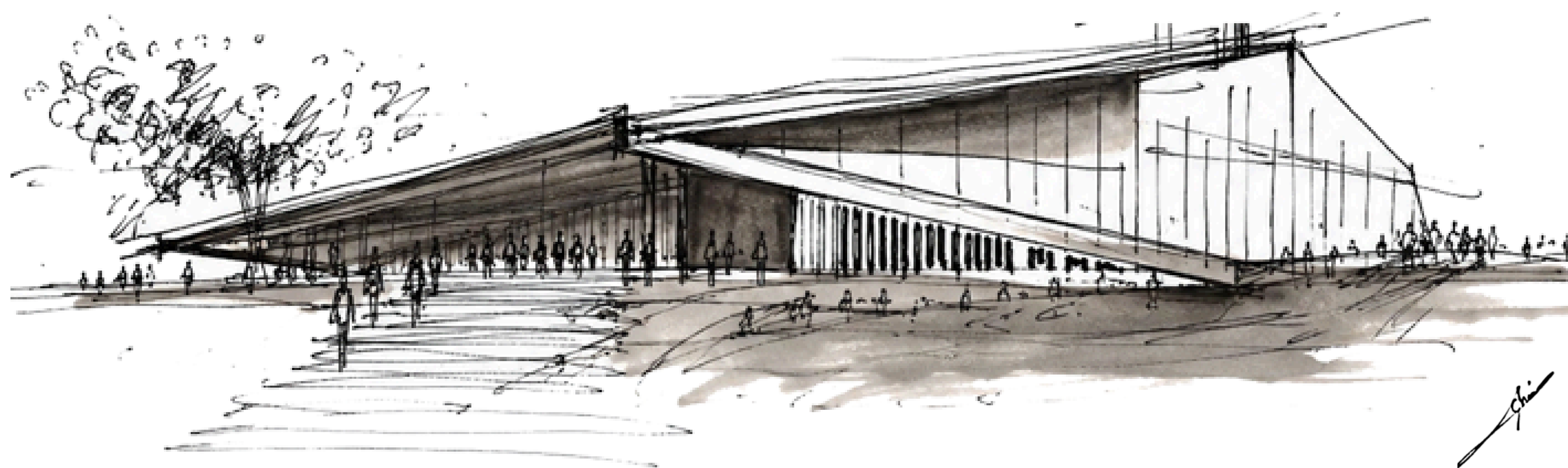
Life

5 Concert Hall / Recital Hall





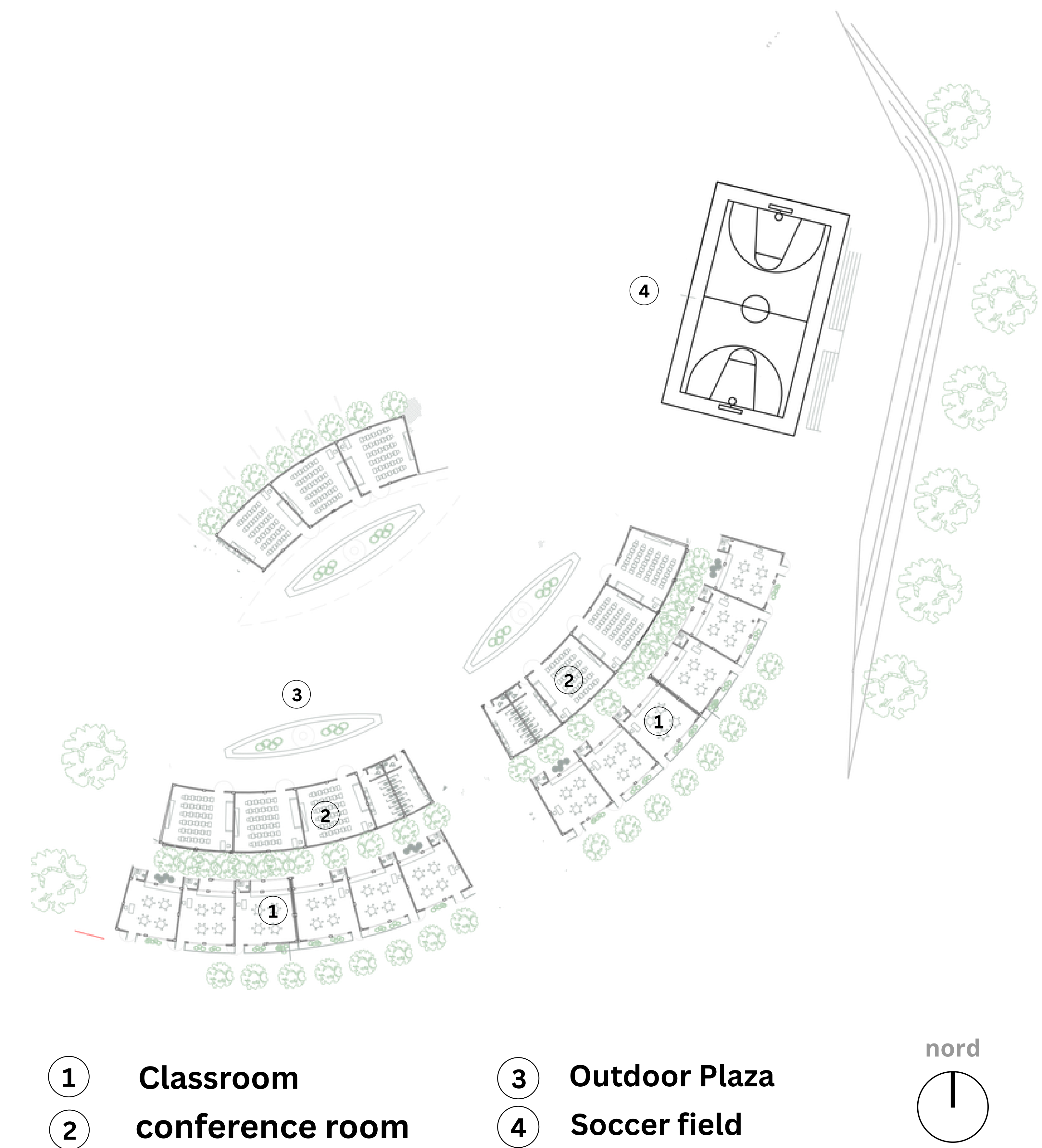
Concert Hall



The project does not erase the past.

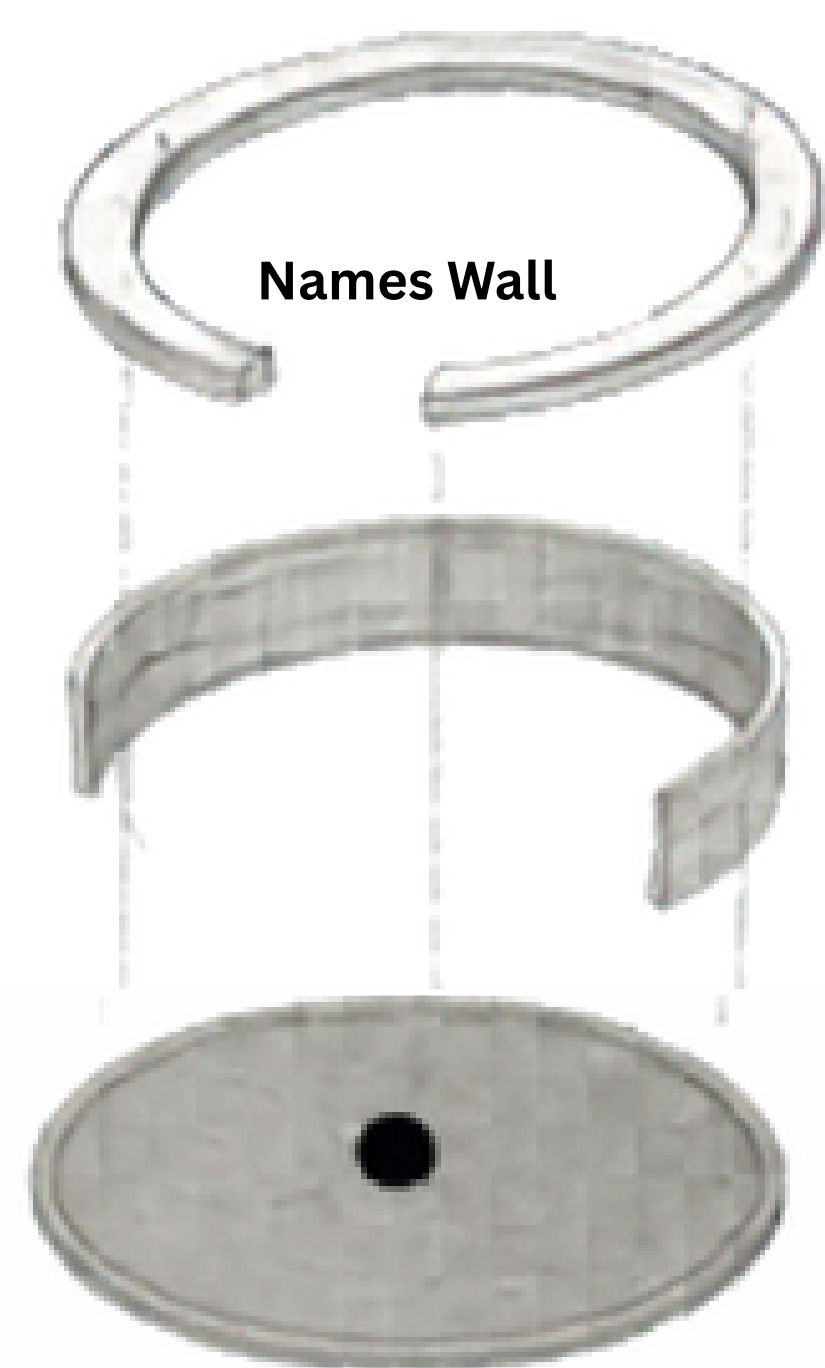
It learns from it....

The silhouette of the concert hall emerges from the proportions and roofscape of the existing barracks, creating a dialogue between heritage and future generations. Through architecture, a place once associated with loss becomes a place of gathering, culture and hope.



The educational hub serves as a bridge between memory and the future.

Organized around flexible learning spaces, outdoor classrooms and community facilities, it fosters education, social interaction and cultural transmission. Embedded within the forest environment, the project ensures that memory remains accessible, relevant and shared across generations.

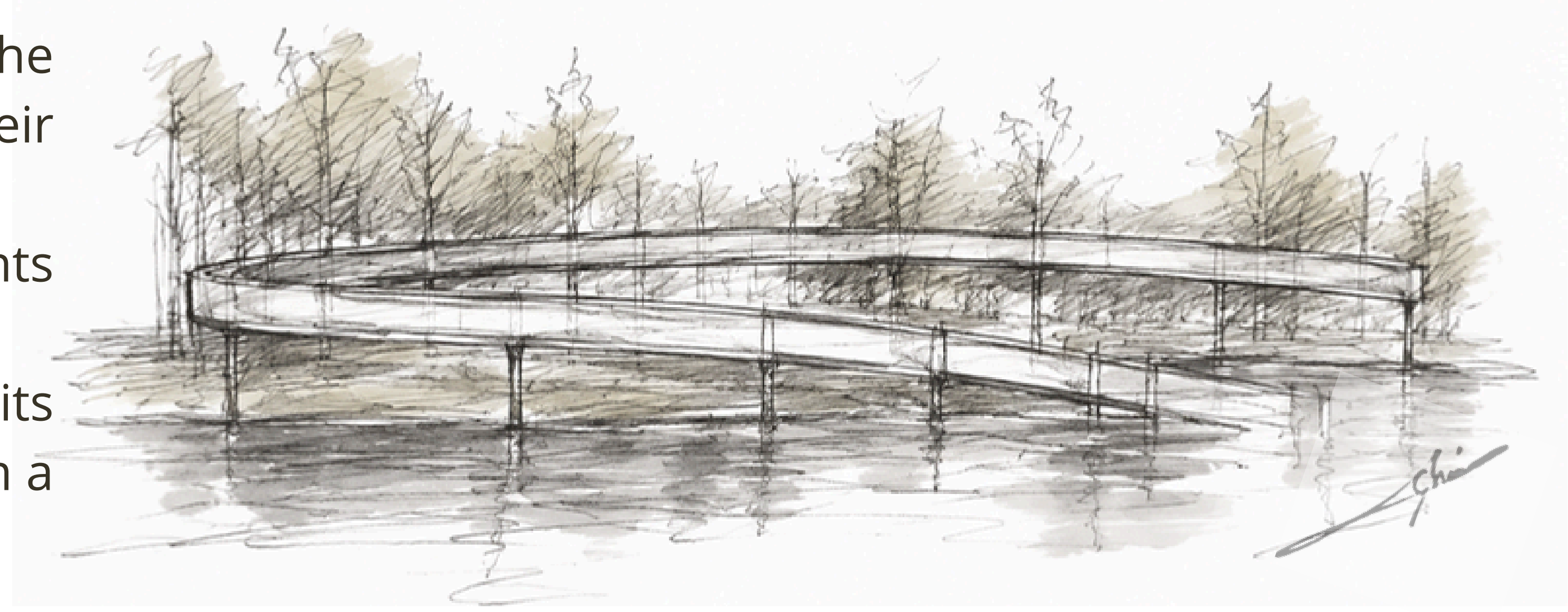


NAME WALL

Conceived as an open circle, the Name Wall symbolizes a history that remains incomplete. Its interrupted geometry reflects the lives that were cut short, the families that were separated, and the countless stories that were never allowed to reach their conclusion.

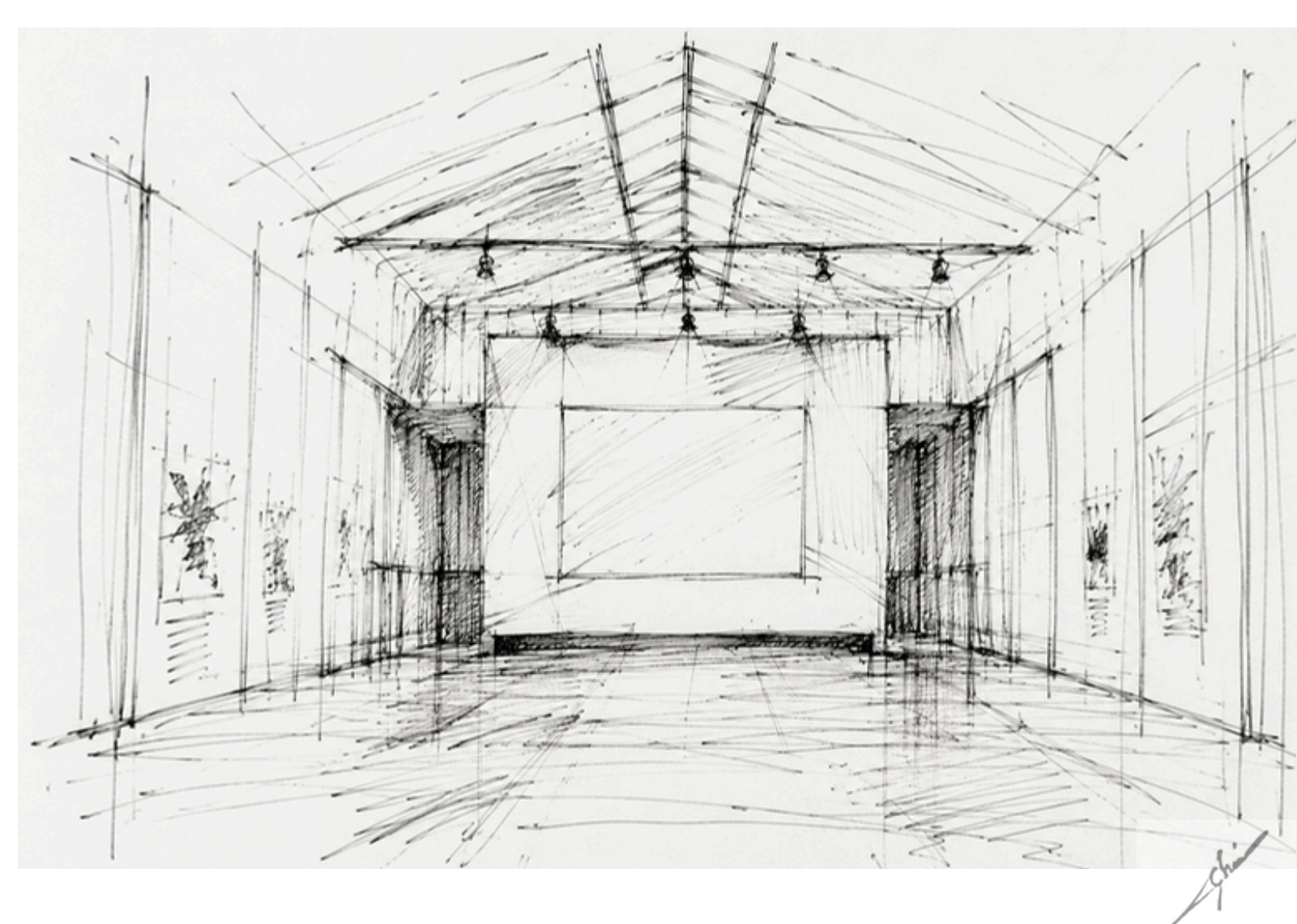
Inscribed with names and dates, the wall restores visibility to those who were erased from history. Each inscription represents an individual life, while together they form a collective narrative of memory and resistance.

Set within the memorial forest, the wall becomes both a place of mourning and a place of transmission. The absence at its center is intentional: it is a space left for reflection, dialogue and future generations. In this way, memory is transformed from a static record of loss into a living act of remembrance, ensuring that the past continues to inform the future.





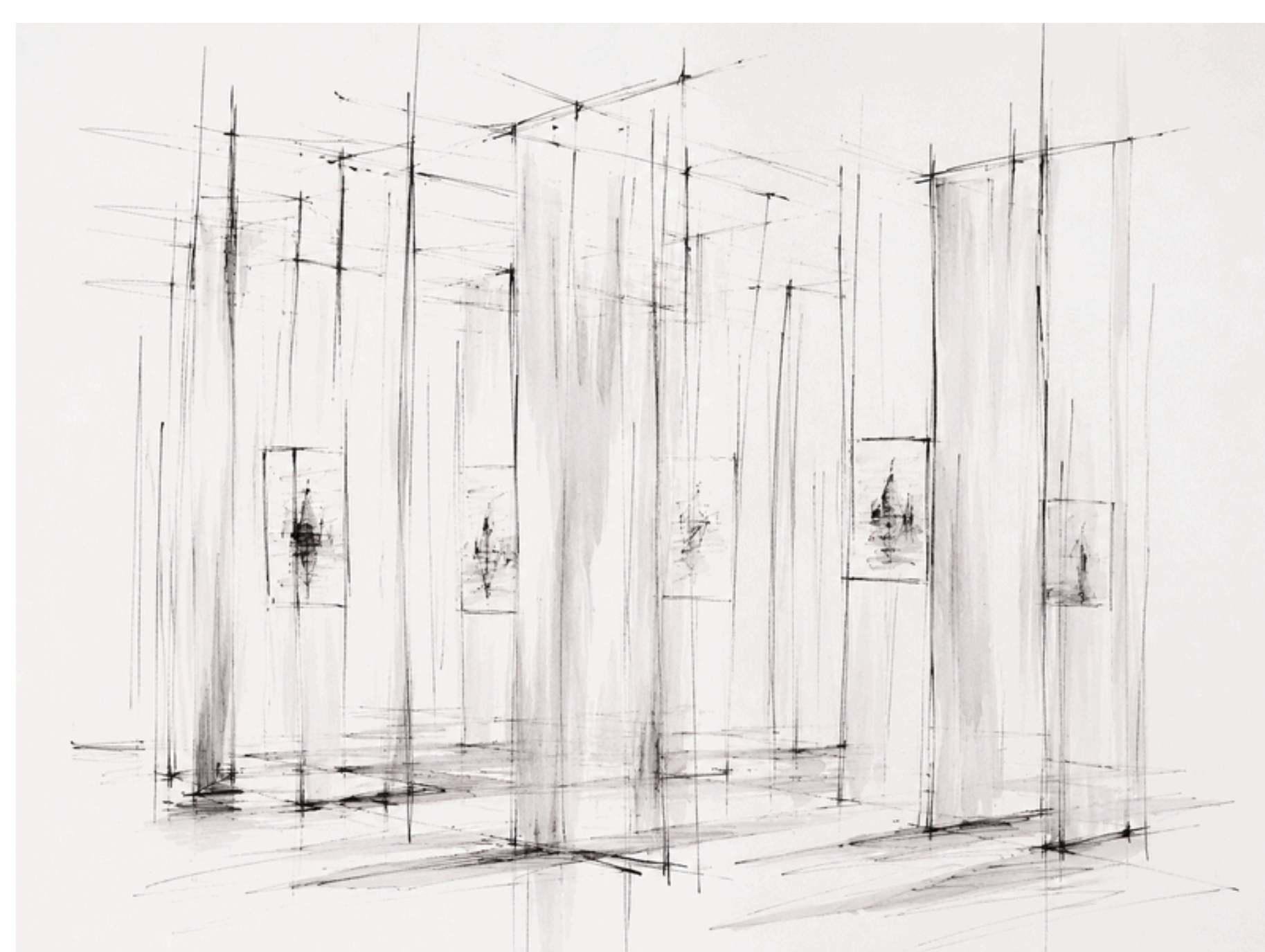
AUDIOVISUAL HALL



Inserted within a rehabilitated historic barrack, the audiovisual hall provides an immersive environment for collective remembrance. Through film, testimony and archival material, visitors encounter the human stories behind the site. The restored zenithal opening guides natural light into the space, creating a scenographic atmosphere where architecture supports contemplation. By transforming a former military structure into a place of learning and dialogue, the project reinterprets a painful heritage and opens it toward future generations.

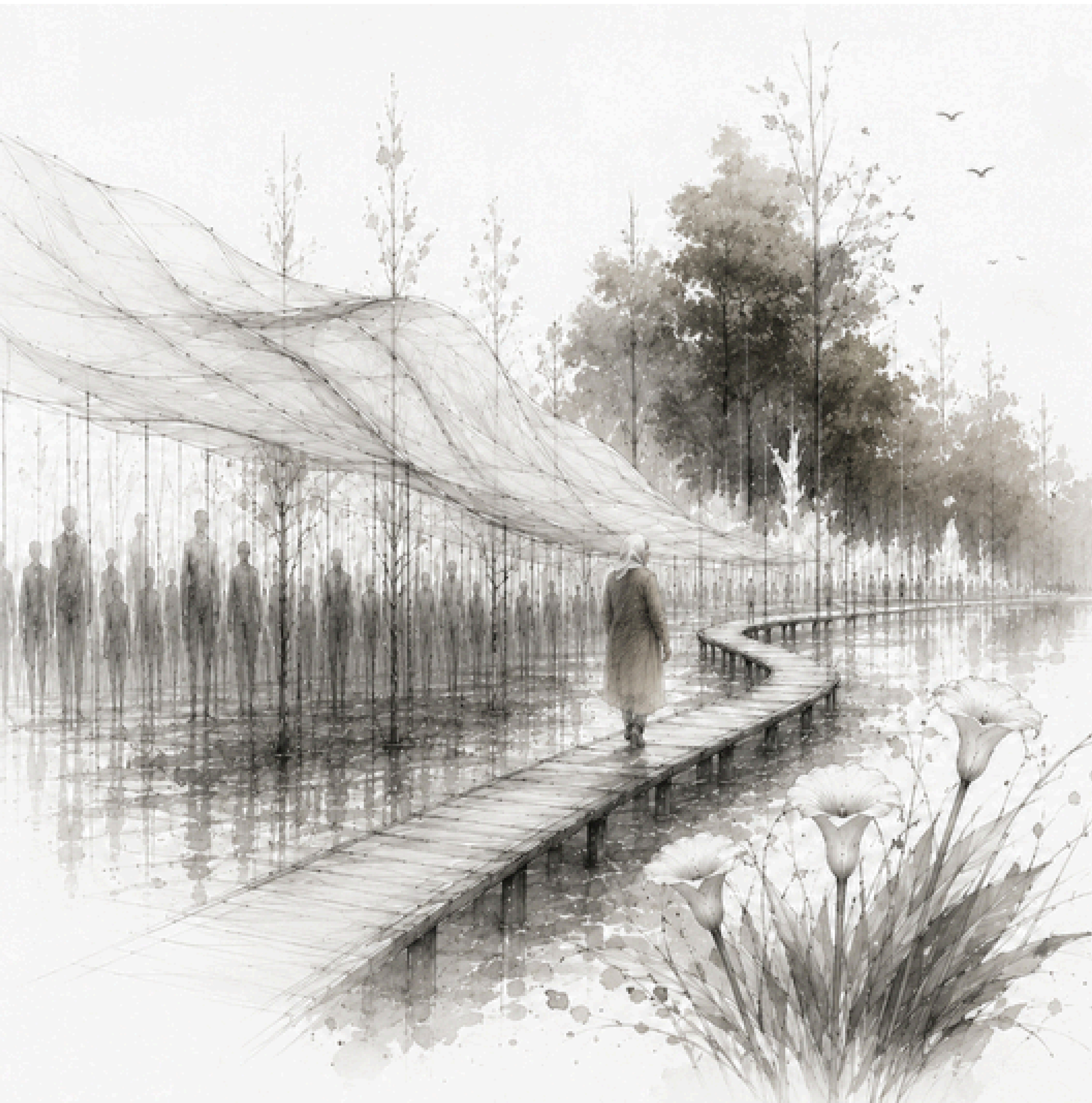


HISTORICAL EXHIBITION PAVILION



Located within the rehabilitated military barracks, the Historical Exhibition Pavilion serves as the interpretive core of the memorial complex. Through archives, photographs, personal testimonies and historical artifacts, the exhibition reconstructs the collective memory of the site and its surrounding history.

Organized around a sequence of suspended exhibition elements, the space encourages exploration, reflection and learning. Natural light entering through the restored zenithal opening enhances the perception of depth and transparency, creating an atmosphere where historical narratives are gradually revealed. By transforming archival material into an accessible educational resource, the pavilion ensures that memory remains active, shared and meaningful for future generations.



To those who disappear
We could not bring you back.
But we refused to forget.
You were searched for.
You were mourned.
You were loved.

This place carries your memory
through the forest,
through the path of your mothers,
and into the future.

Argentina walks forward,
without forgetting.

Nunca Más.

Chaima