

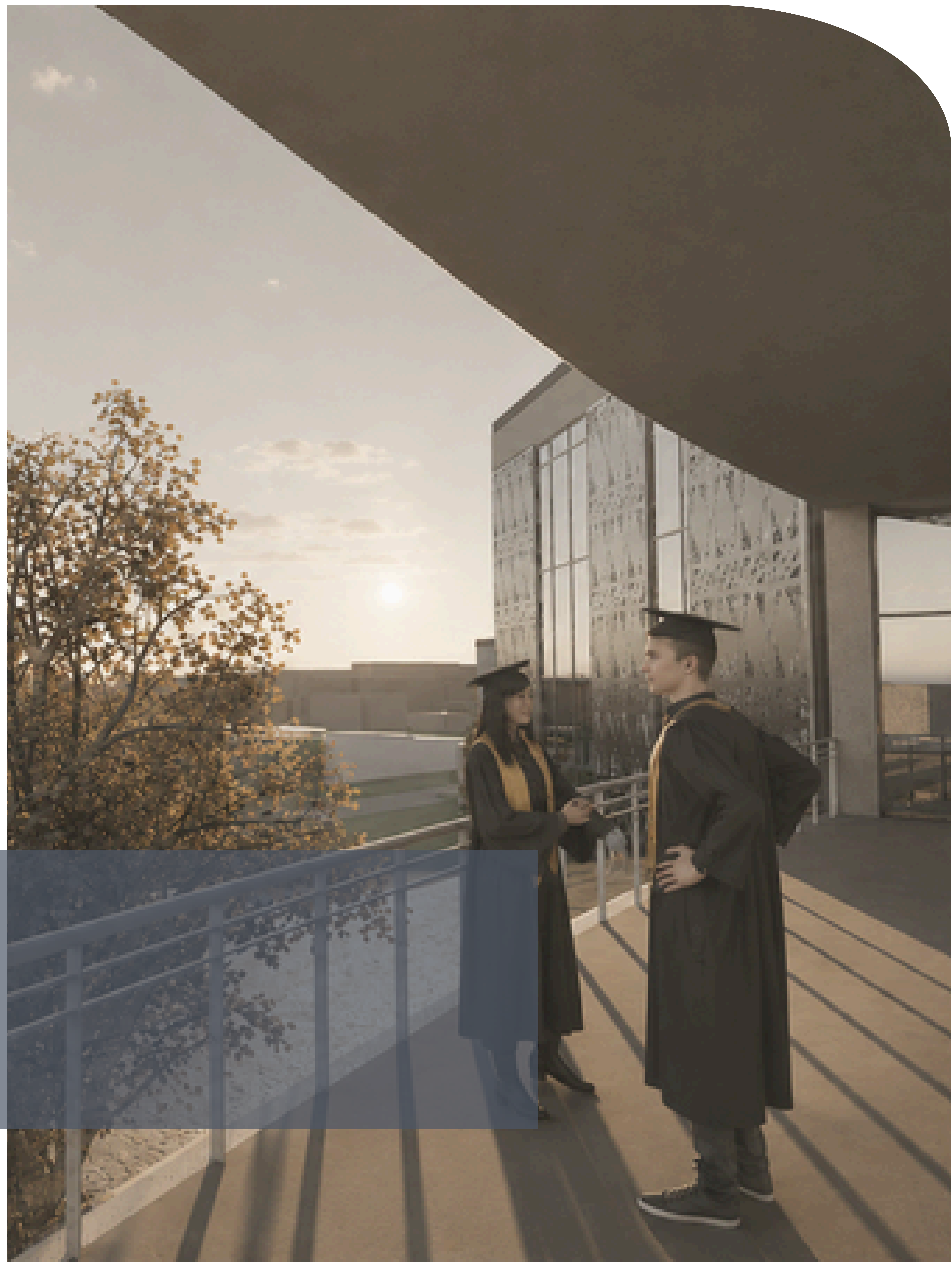
The Commons

Crossing Paths were Strangers MEET
Hassanen Sami Basheer Alhasnawi
202218501

Course Instructors: Prof. Dr. Aslı Er Akan Assoc. Prof. Dr. Fatma Gül Öztürk Büke Assist. Prof. Dr. Ayça Özmen Inst. Dr. Leyla Etyemez
Çıplak Res. Assist. Dr. Başak Kalfa Res. Assist. Dr. Şafak Sakçak

- Project Introduction.....2
- Video.....3
- City Relationships.....4
- Spatial Logic of Interaction From Grid to Collective Living.....5
- Ground Floor Plan, Exploded Diagram, Sections, Digital Model View, and Site section.....6
- First Floor Plan, Exploded Diagram, Elevations, Digital Model View, and Site section.....7
- Second Floor Plan, Exploded Diagrams, Detailed Plans,7
- Renders.....8
- Project Timeline.....9

CONTENT

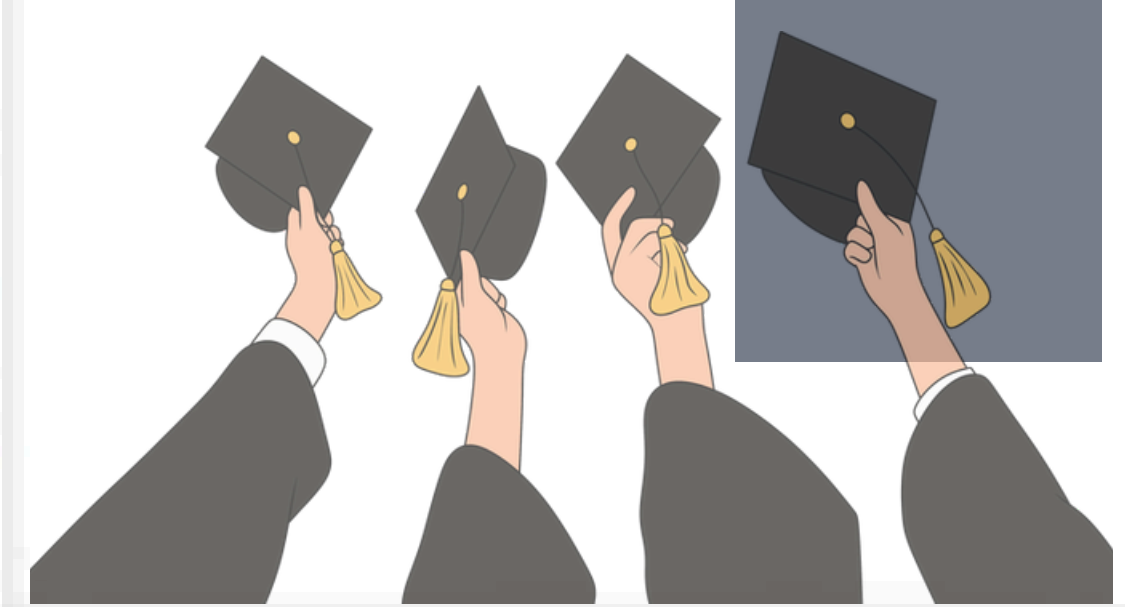


The Commons: Crossing Paths Where Strangers Meet

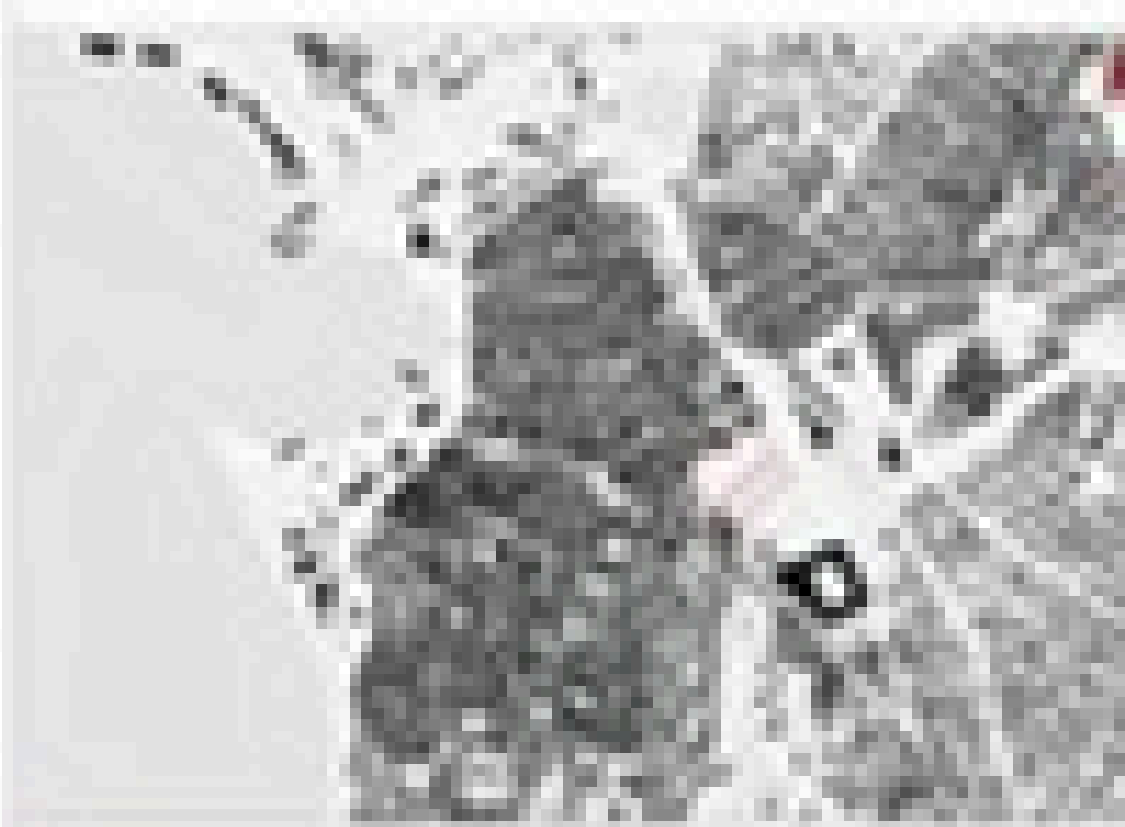
The Commons is a mixed-use urban development that brings together residential, commercial, and communal functions within a shared social framework. Inspired by the intersection of structured grids and fluid movement paths, the project creates interconnected public spaces that encourage interaction, collaboration, and a sense of belonging. By transforming everyday circulation into opportunities for encounter, the proposal reimagines collective living as an active and vibrant urban experience.

GRADUATE

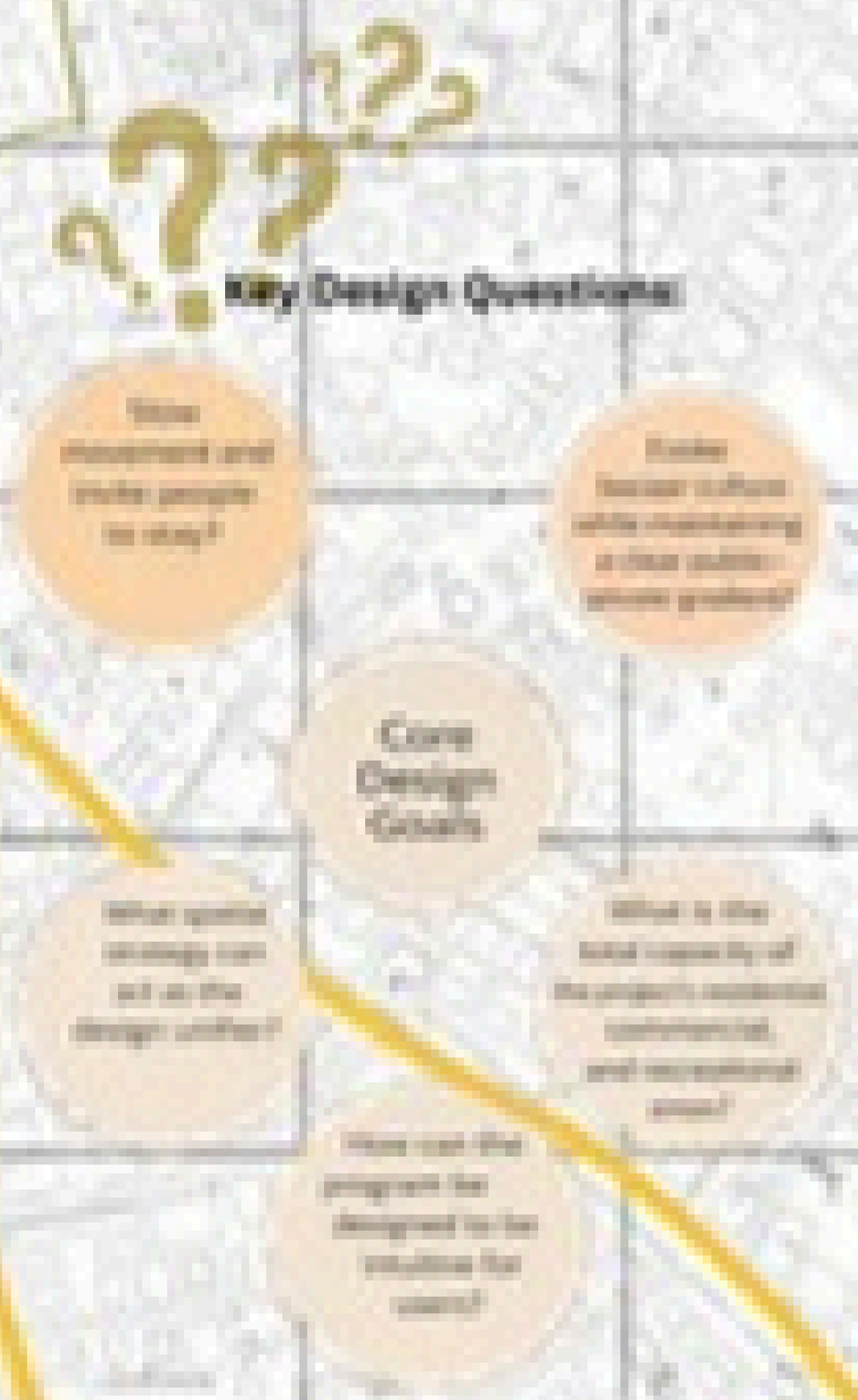




Location:
Kadıköy/Istanbul/Turkey
Total Area:
30,000 m²
Client:-
Project Time Line:
Spring Semester 2025-2026



"The Collective Living" project designs a hybrid urban block that combines housing, commercial, and communal spaces. It explores how mixed-use programs and public spaces can create active, socially vibrant environments. The focus is on clear public-private transitions, lively ground floors, and interconnected courtyards that enhance interaction while preserving residential quality.

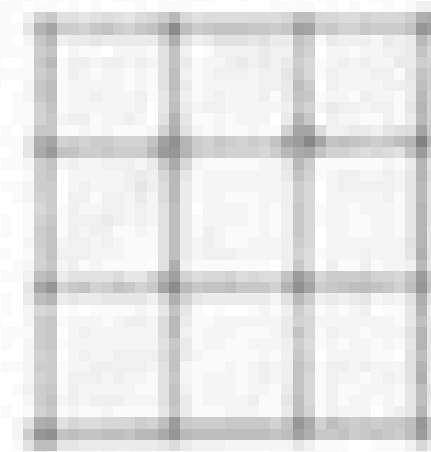


CONCEPT DIAGRAM

THE CONCEPT IS BASED ON USING GRIDS FOR COMMERCIAL AREAS, CURVED PAVEMENT TO GUIDE MOVEMENT TOWARD ENTRANCES, AND THE INTERSECTION OF GRIDS AND CURVES TO CREATE VIBRANT COMMUNITY SPACES.

1. GRID FOR COMMERCIAL AREAS

THE GRID CREATES FLEXIBLE AND EFFICIENT SPACES FOR SHOPS AND TRADING ACTIVITIES. IT PROVIDES CLARITY, ORDER AND EASY ORGANIZATION OF COMMERCIAL UNITS.



COMMERCIAL / TRADING (GRID SYSTEM)

2. CURVED PAVEMENT FOR DIRECTION

THE CURVED PAVEMENT LEADS PEOPLE NATURALLY TOWARD THE ENTRANCES AND IMPORTANT DESTINATIONS. IT CREATES FLOW, MOVEMENT AND A SENSE OF DISCOVERY.



MOVEMENT PATHS / CURVED PAVEMENT (DIRECTION)

3. INTERSECTION AS COMMUNITY SPACES

WHERE THE GRID MEETS THE CURVES, SPACES ARE FORMED AS PLAZAS, GATHERING AREAS AND COMMUNITY SPACES THAT ENCOURAGE INTERACTION AND SOCIAL LIFE.

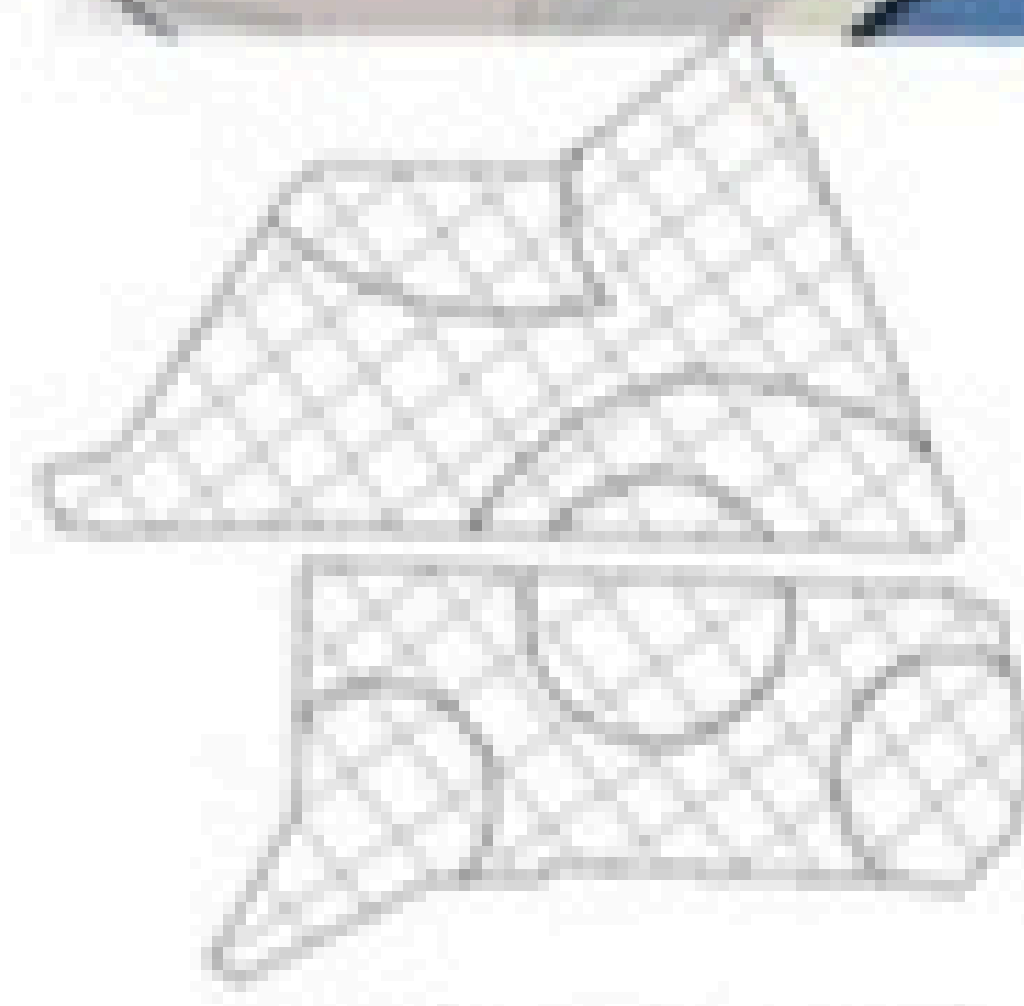


COMMUNITY SPACES / PLAZAS (INTERSECTION)

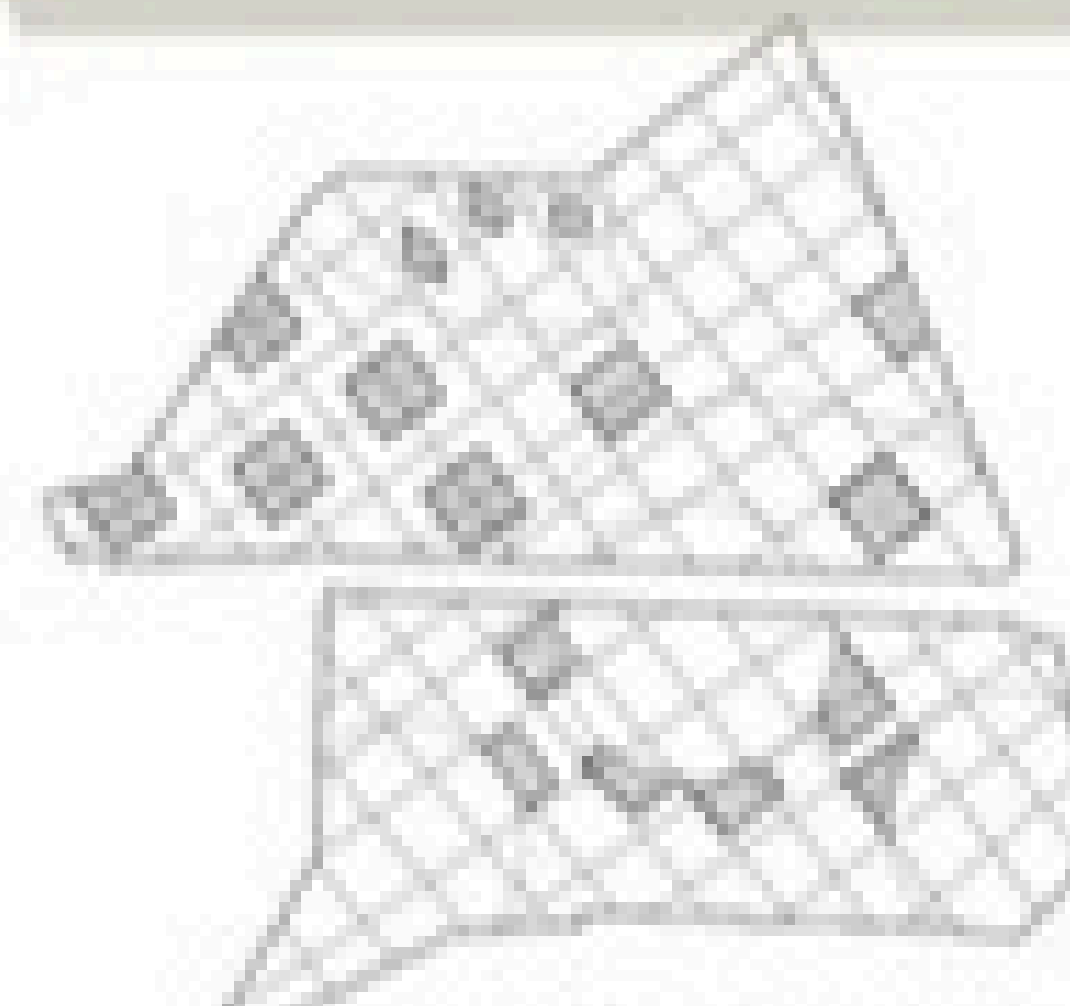
COMMERCIAL / TRADING (GRID)
 MOVEMENT / DIRECTION (CURVED PAVEMENT)
 COMMUNITY SPACES / PLAZAS (INTERSECTION)
 ENTRANCE POINTS



1. SITE & GRID ESTABLISHING A BASIC GRID BASED ON THE SITE.



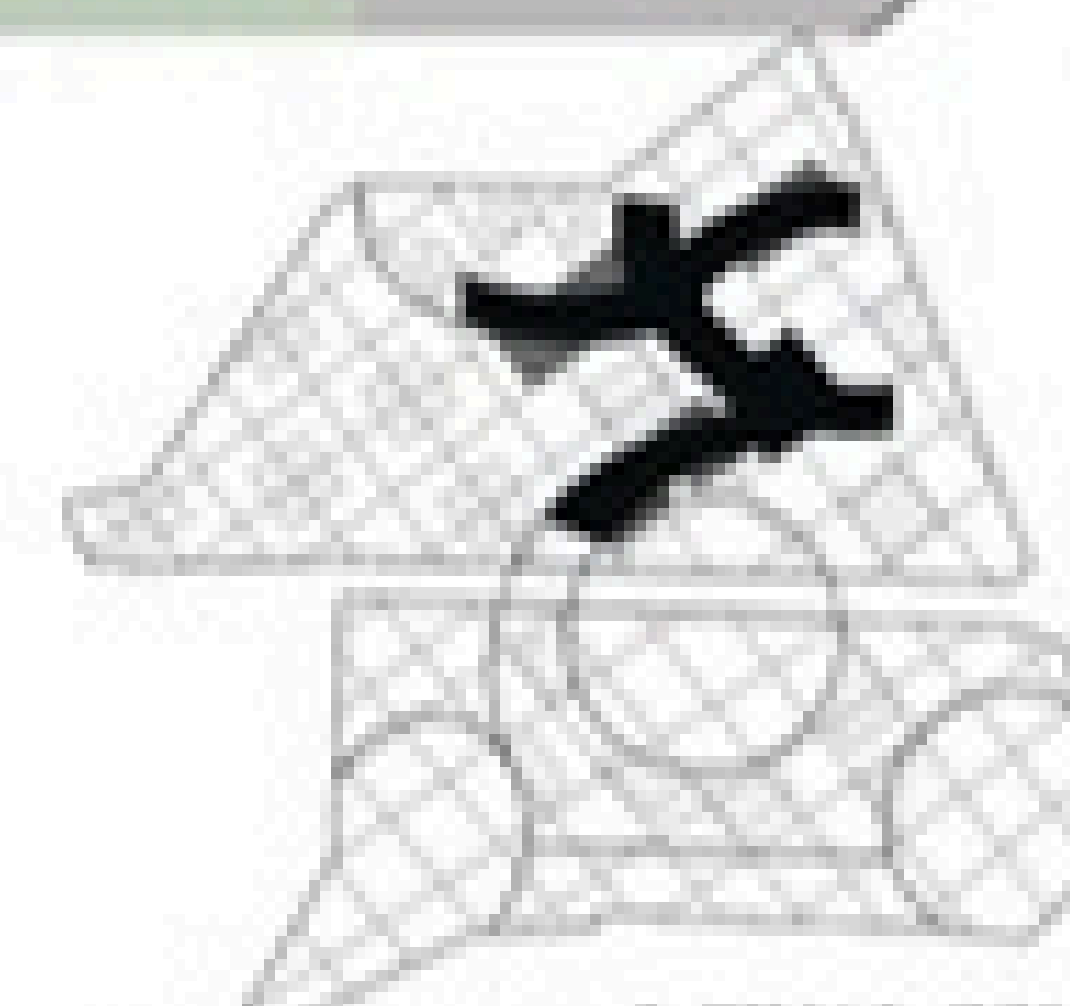
2. CURVED PATHS INTRODUCING CURVED PAVEMENT TO GUIDE MOVEMENT.



3. INTERSECTIONS CREATING INTERSECTIONS BETWEEN GRID AND CURVES.



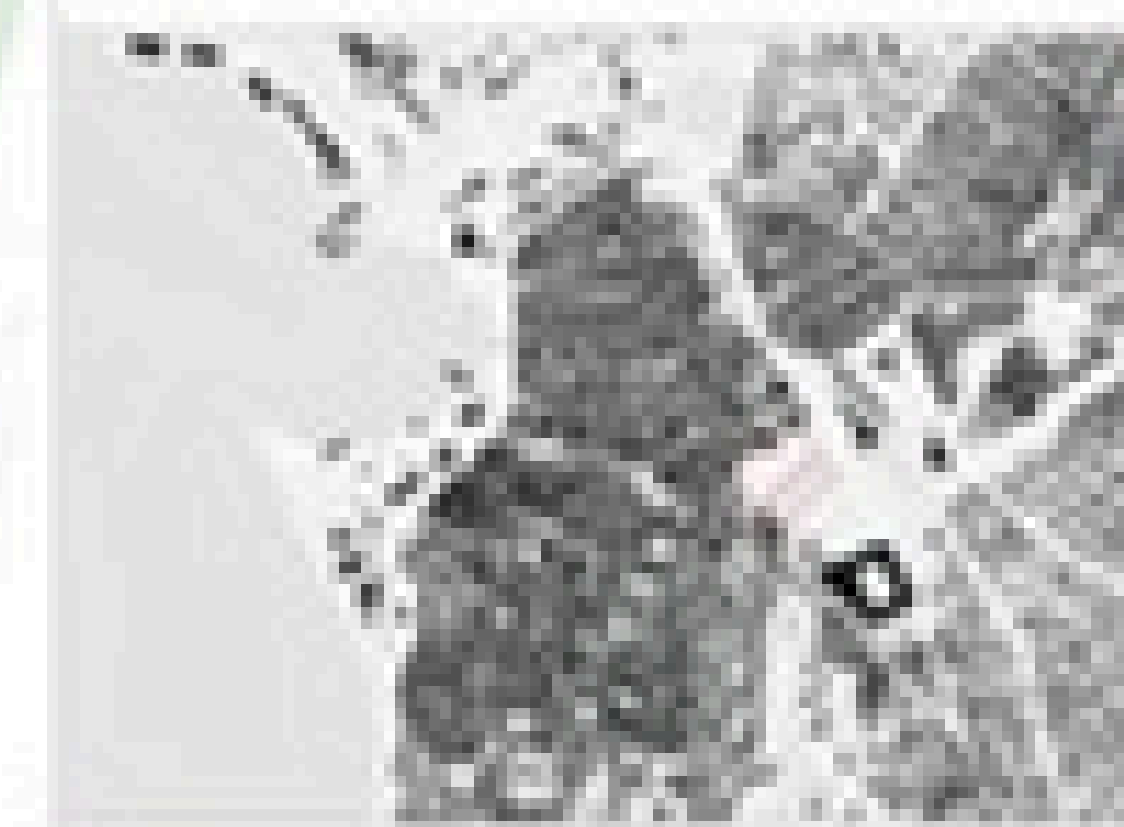
4. COMMUNITY SPACES INTERSECTIONS BECOME PLAZAS AND GATHERING SPACES.



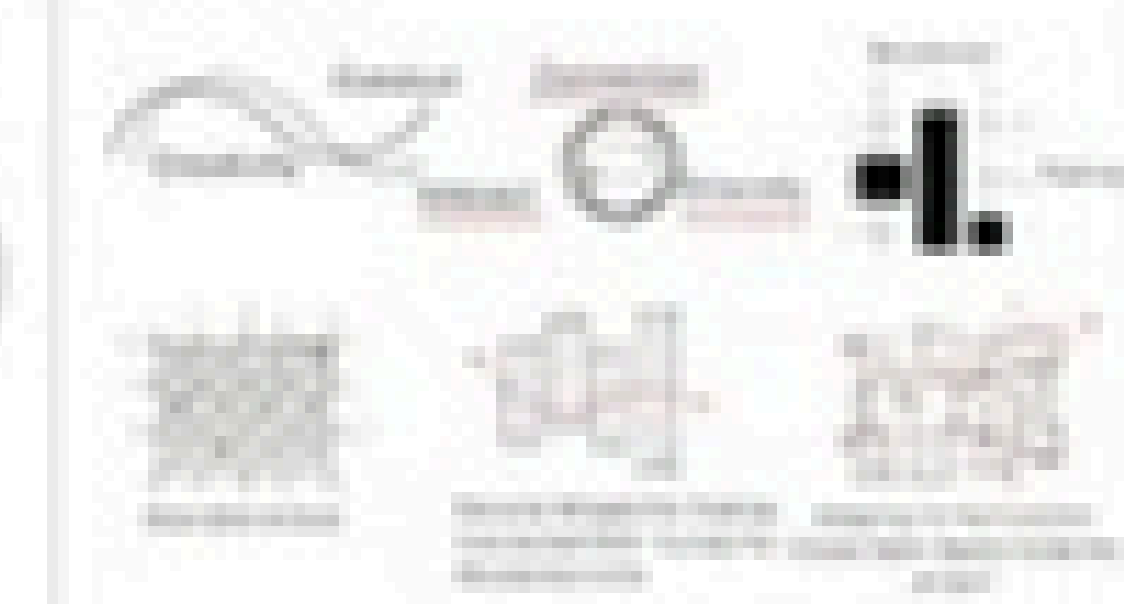
5. FINAL CONCEPT A BALANCED INTEGRATION OF COMMERCIAL, MOVEMENT AND COMMUN



Location: Kadıköy/Istanbul/Turkey
 Total Area: 30,000 m²
 Client:-
 Project Time Line: Spring Semester 2025-2026



"The Collective Living" project designs a hybrid urban block that combines housing, commercial, and communal spaces. It explores how mixed-use programs and public spaces can create active, socially vibrant environments. The focus is on clear public-private transitions, lively ground floors, and interconnected courtyards that enhance interaction while preserving residential quality.

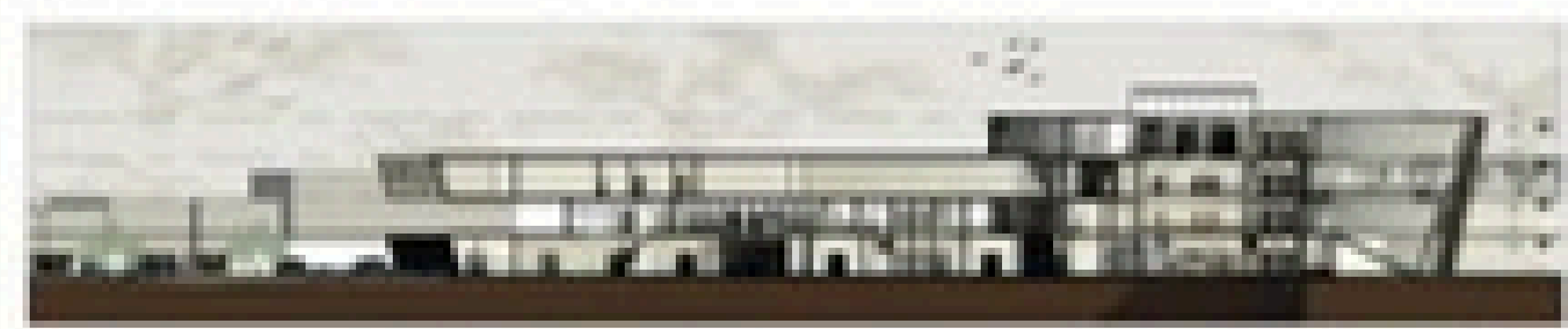




EP1 Ground Floor Plan
1 : 500



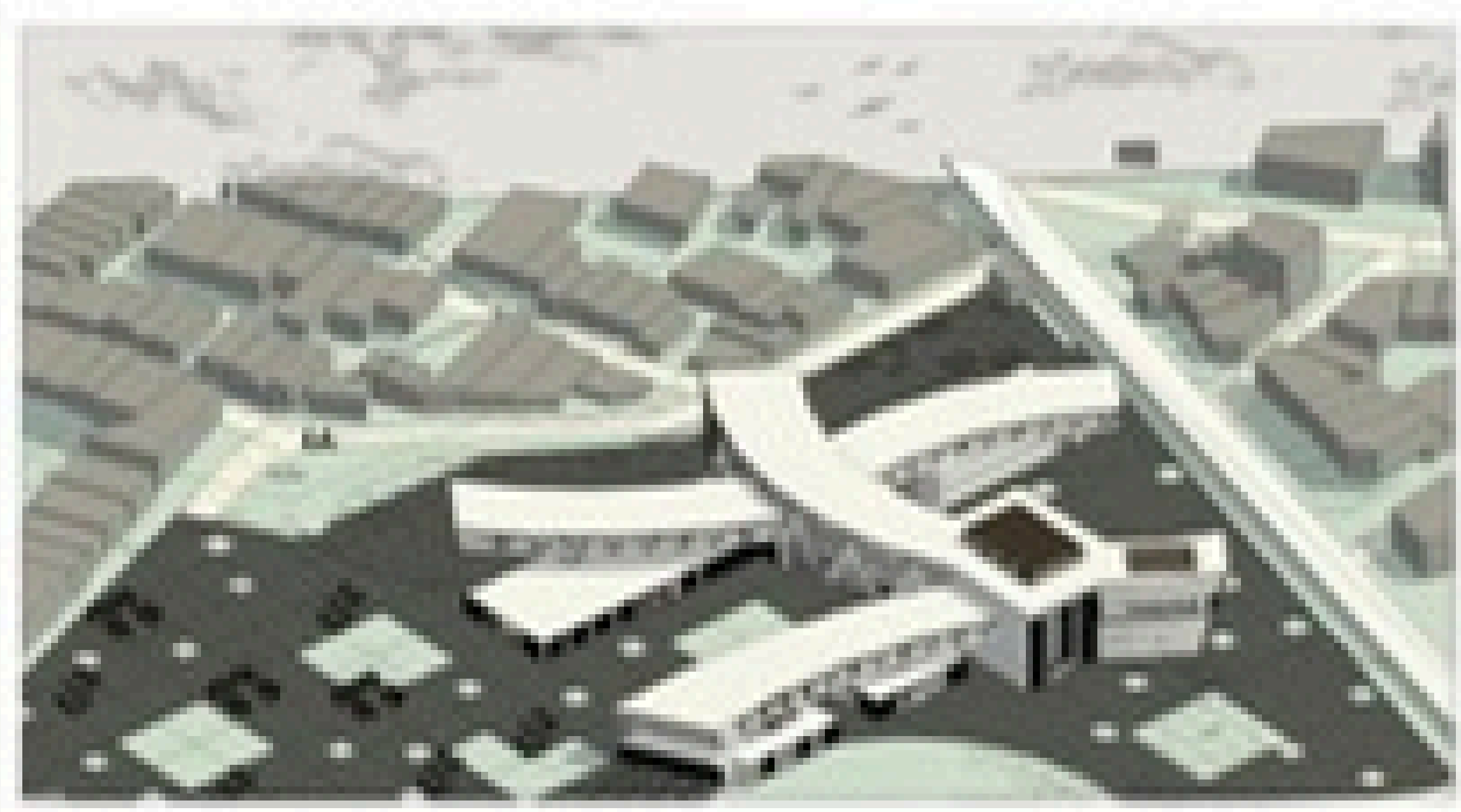
ES1 Exploded ISO: Ground Floor



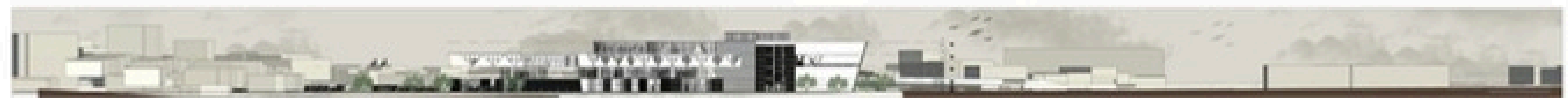
ES3 Section C-C
1 : 500



ES4 Section D-D
1 : 500

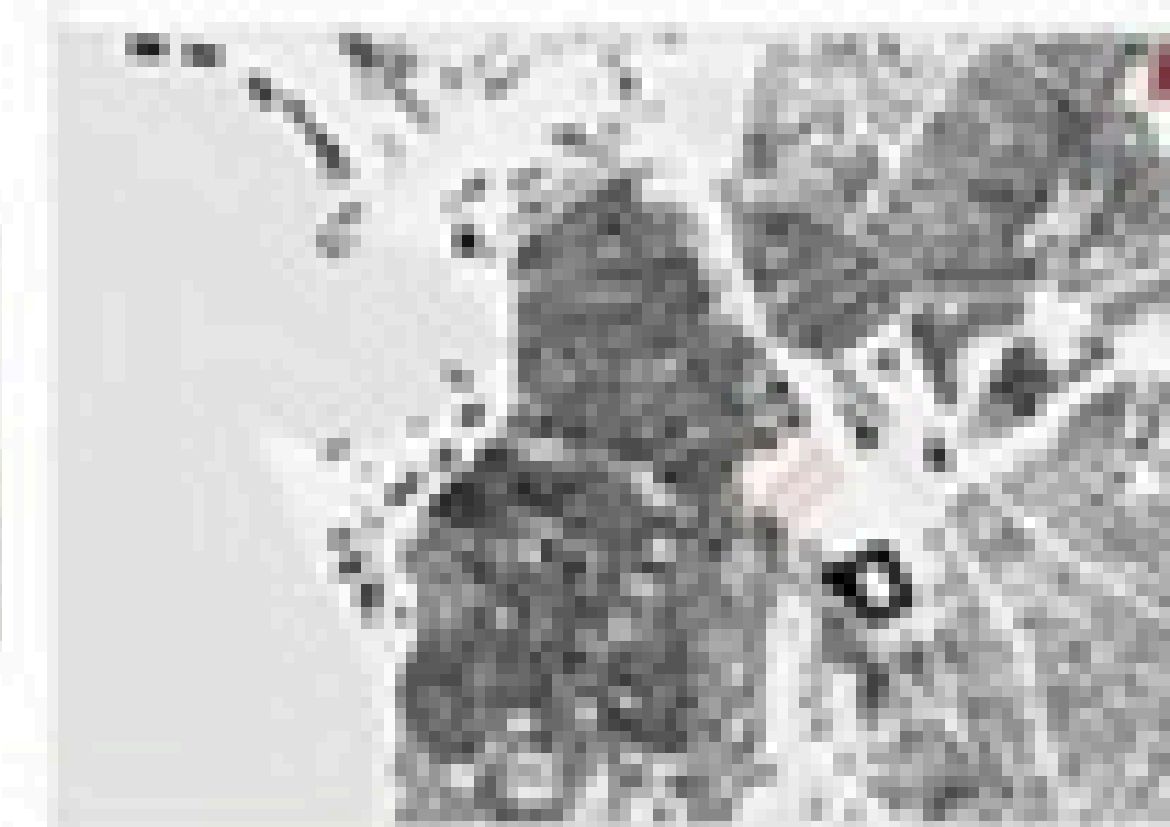


ES1 Digital Model



ES1 Site Section A-A
1 : 500

Location:
Kadiköy/Istanbul/Turkey
Total Area:
30,000 m²
Client:-
Project Time Line:
Spring Semester 2025-2026

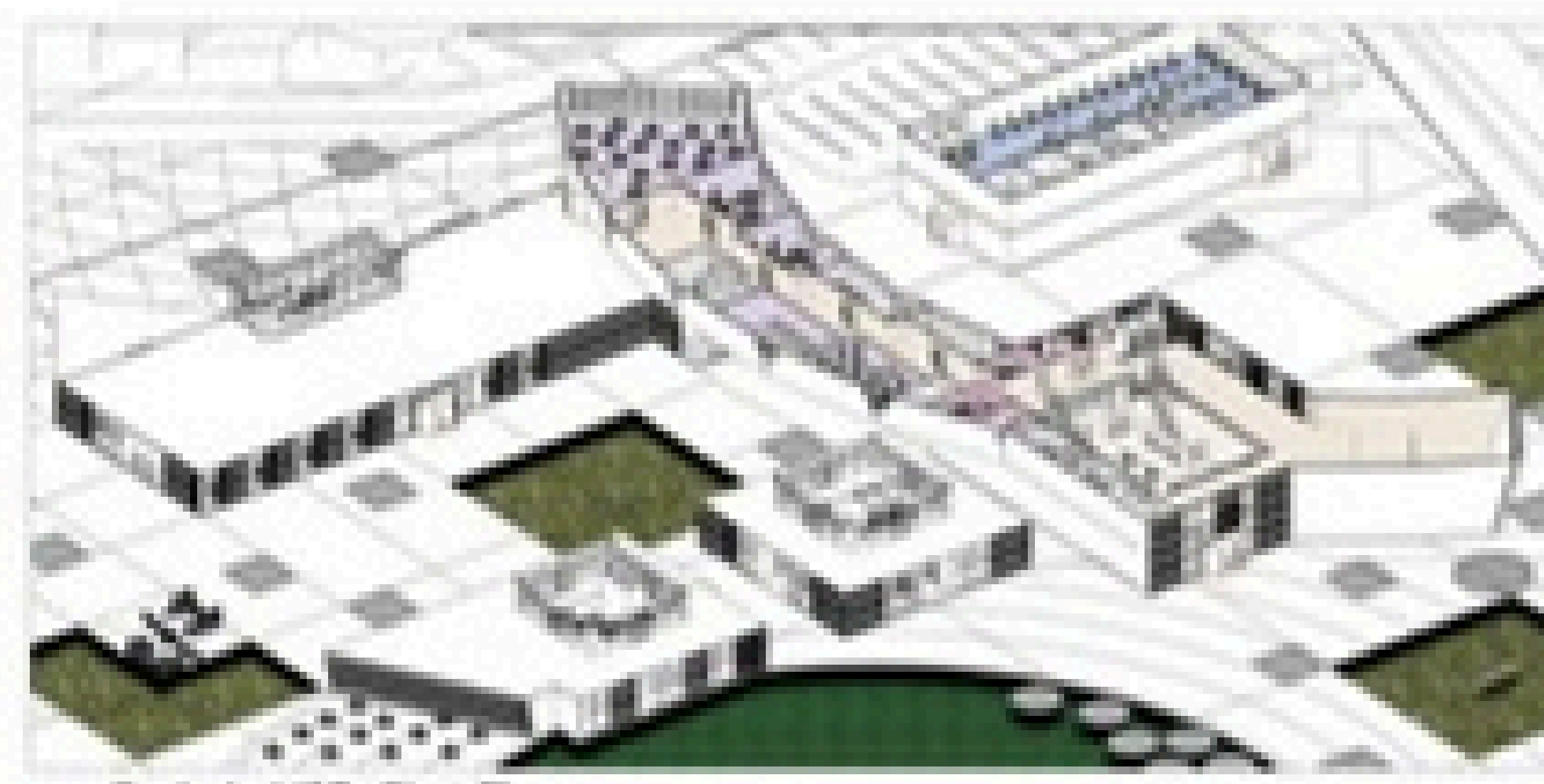


█ Solid
█ Void

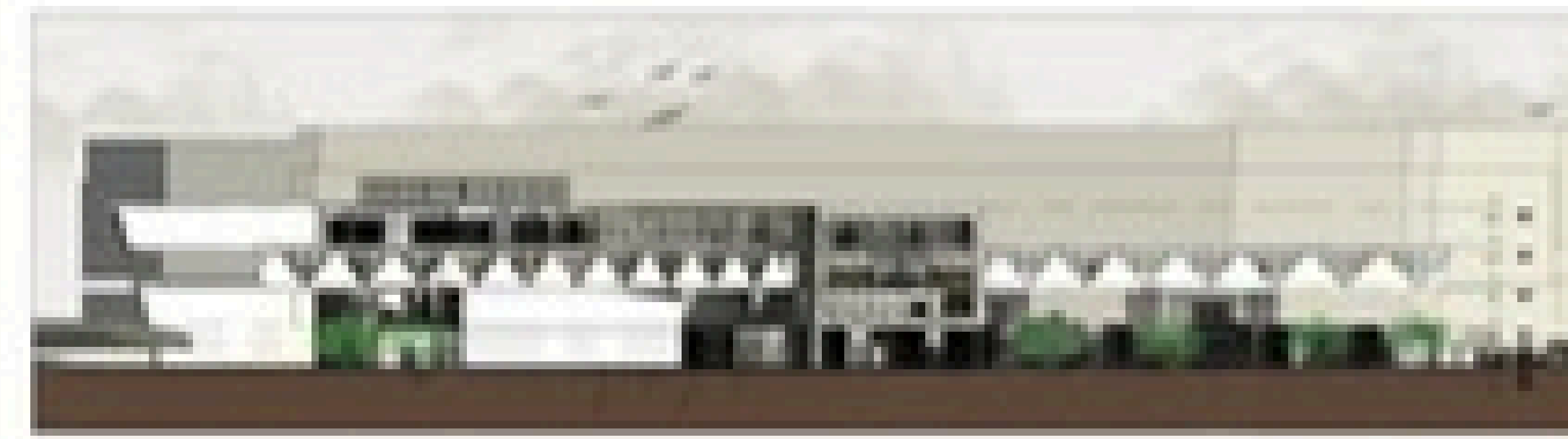
"The Collective Living" project designs a hybrid urban block that combines housing, commercial, and communal spaces. It explores how mixed-use programs and public spaces can create active, socially vibrant environments. The focus is on clear public-private transitions, lively ground floors, and interconnected courtyards that enhance interaction while preserving residential quality.



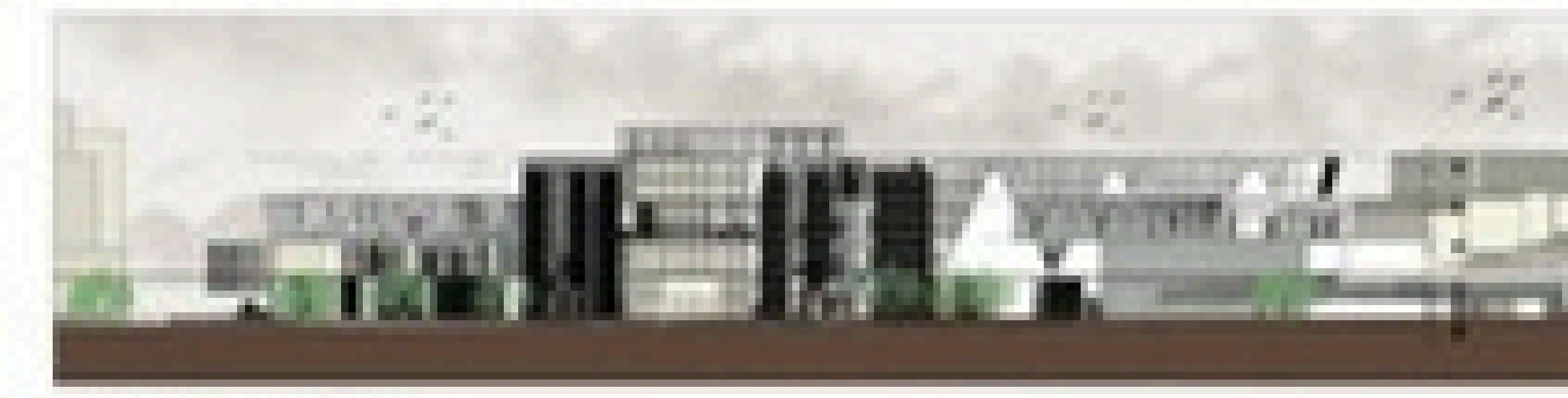
FP2 First Floor Plan
1 : 500



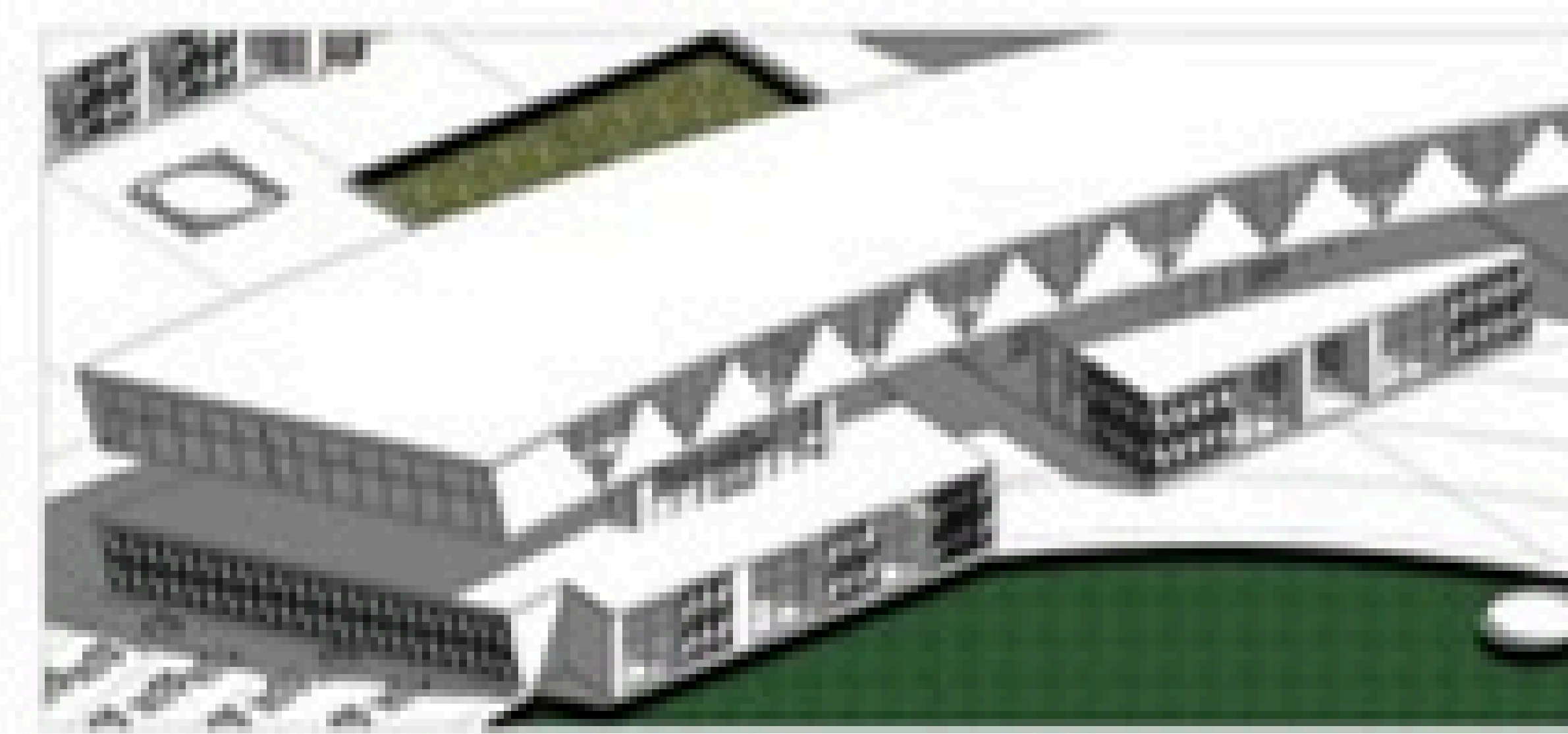
FP2 Exploded (50): First Floor



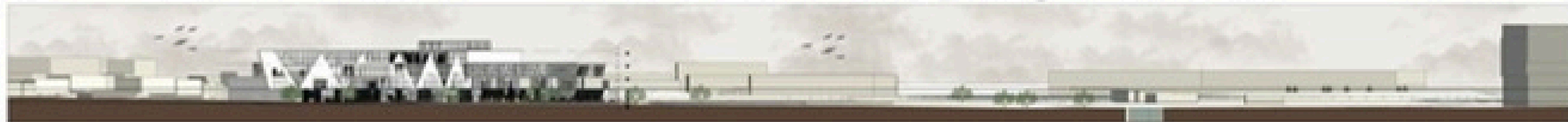
E1 West Elevation
1 : 500



E2 South Elevation
1 : 500

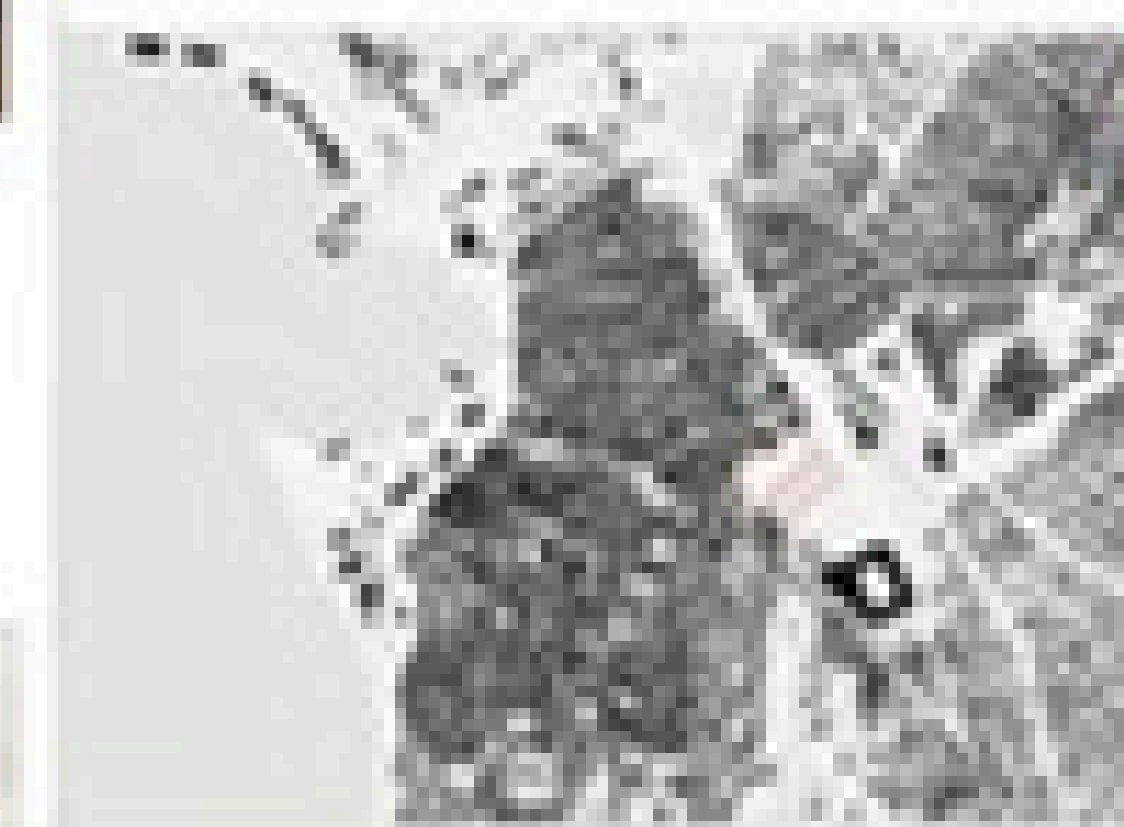


3 Digital Model Detailed View



SS2 Site Section B-B
1 : 500

Location:
Kadiköy/Istanbul/Turkey
Total Area:
30,000 m²
Client:-
Project Time Line:
Spring Semester 2025-2026



"The Collective Living" project designs a hybrid urban block that combines housing, commercial, and communal spaces. It explores how mixed-use programs and public spaces can create active, socially vibrant environments. The focus is on clear public-private transitions, lively ground floors, and interconnected courtyards that enhance interaction while preserving residential quality.



Second Floor Plan
FP2 1:100



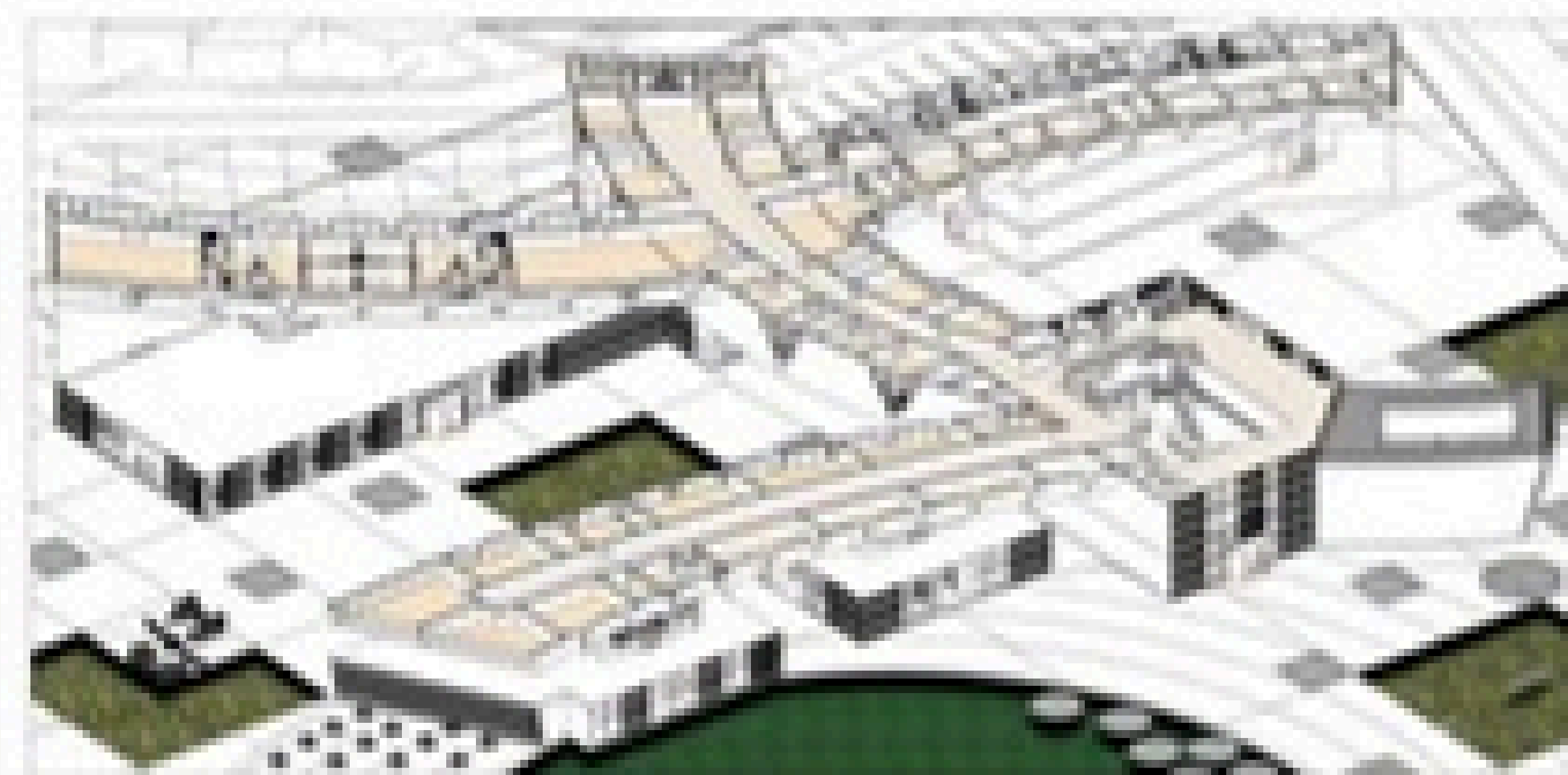
IS4 ISD View: Type A



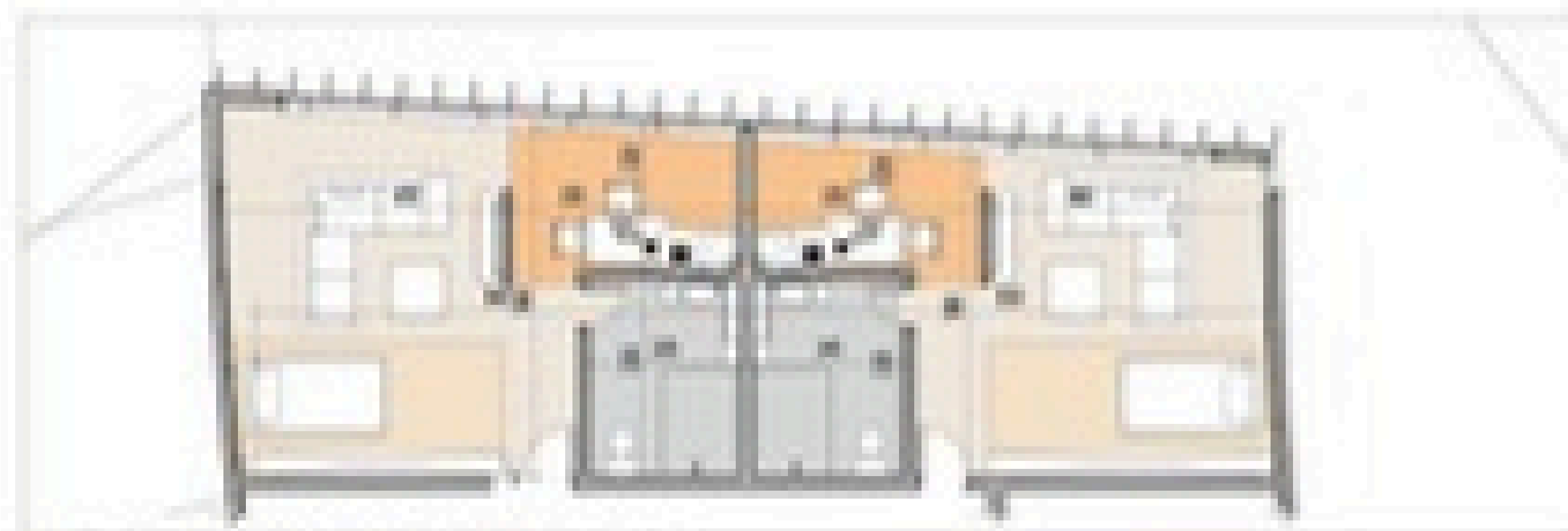
IS5 ISD View: Type B



IS6 ISD View: Type C



IS1 Exploded ISD: Second Floor



OP1 Type-A: Compact Living Unit
1:10



OP2 Type-B: Compact Living Unit
1:10



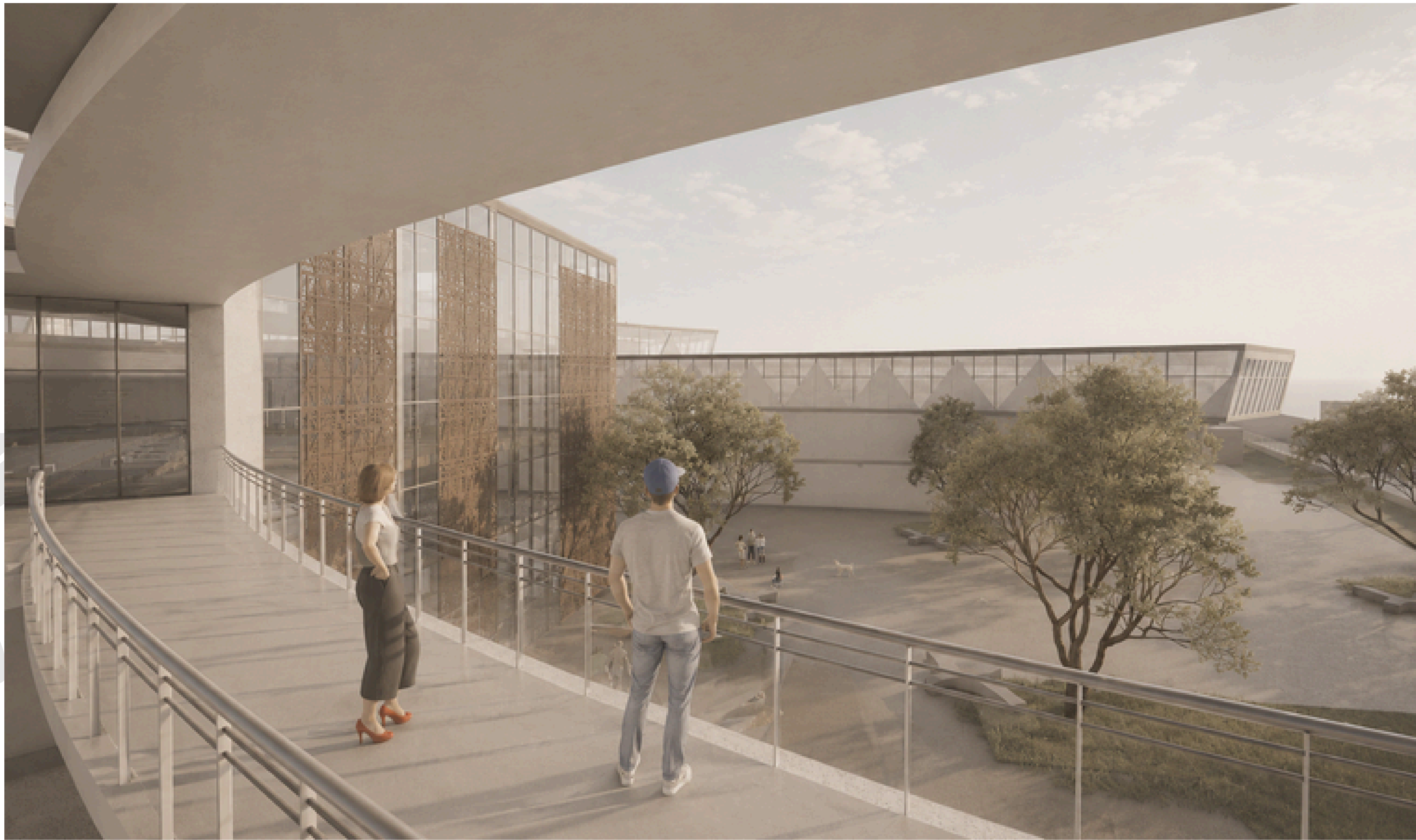
OP3 Type-C: Compact Living Unit
1:10

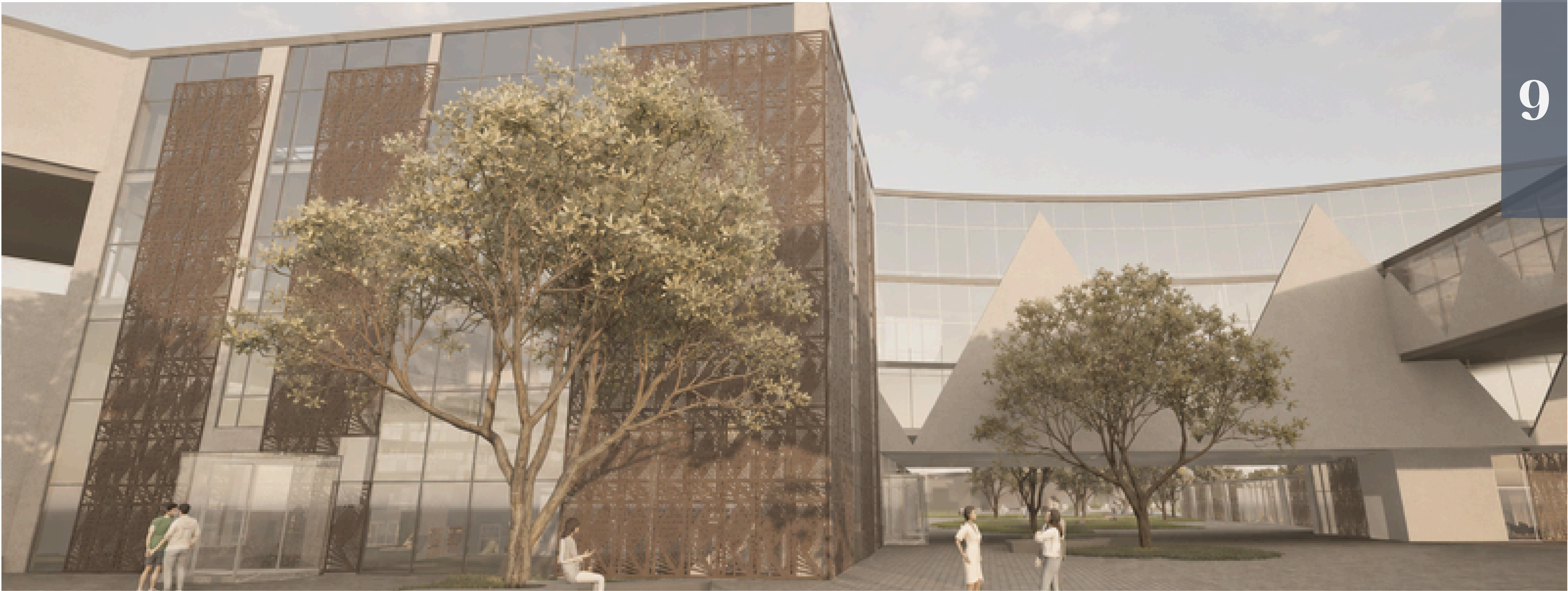
Location:
Kadıköy/İstanbul/Turkey
Total Area:
30,000 m²
Client:-
Project Time Line:
Spring Semester 2025-2026

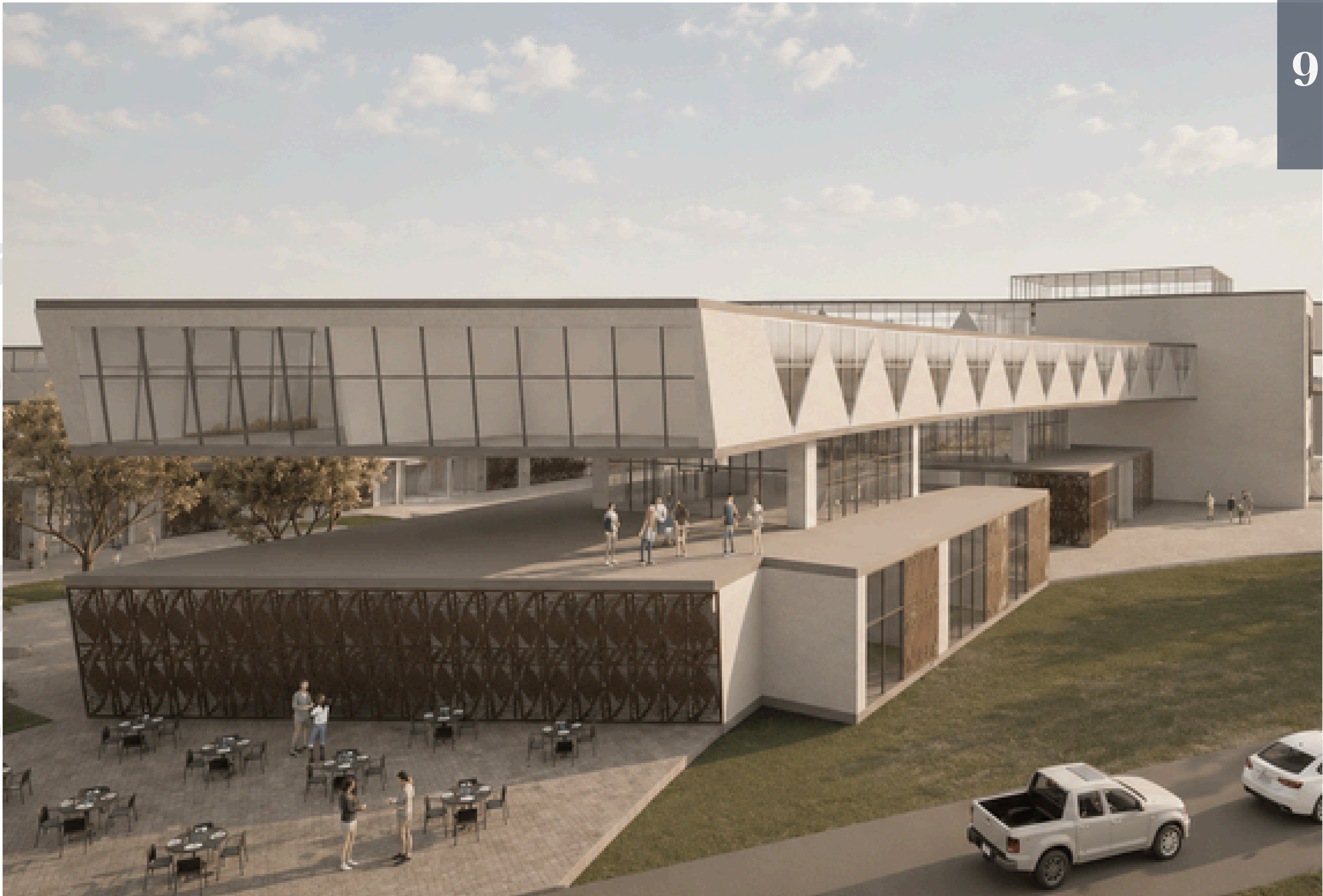


█ Solid
█ Void

"The Collective Living" project designs a hybrid urban block that combines housing, commercial, and communal spaces. It explores how mixed-use programs and public spaces can create active, socially vibrant environments. The focus is on clear public-private transitions, lively ground floors, and interconnected courtyards that enhance interaction while preserving residential quality.







Thank You For Your
ATTENTION



Scan for More