

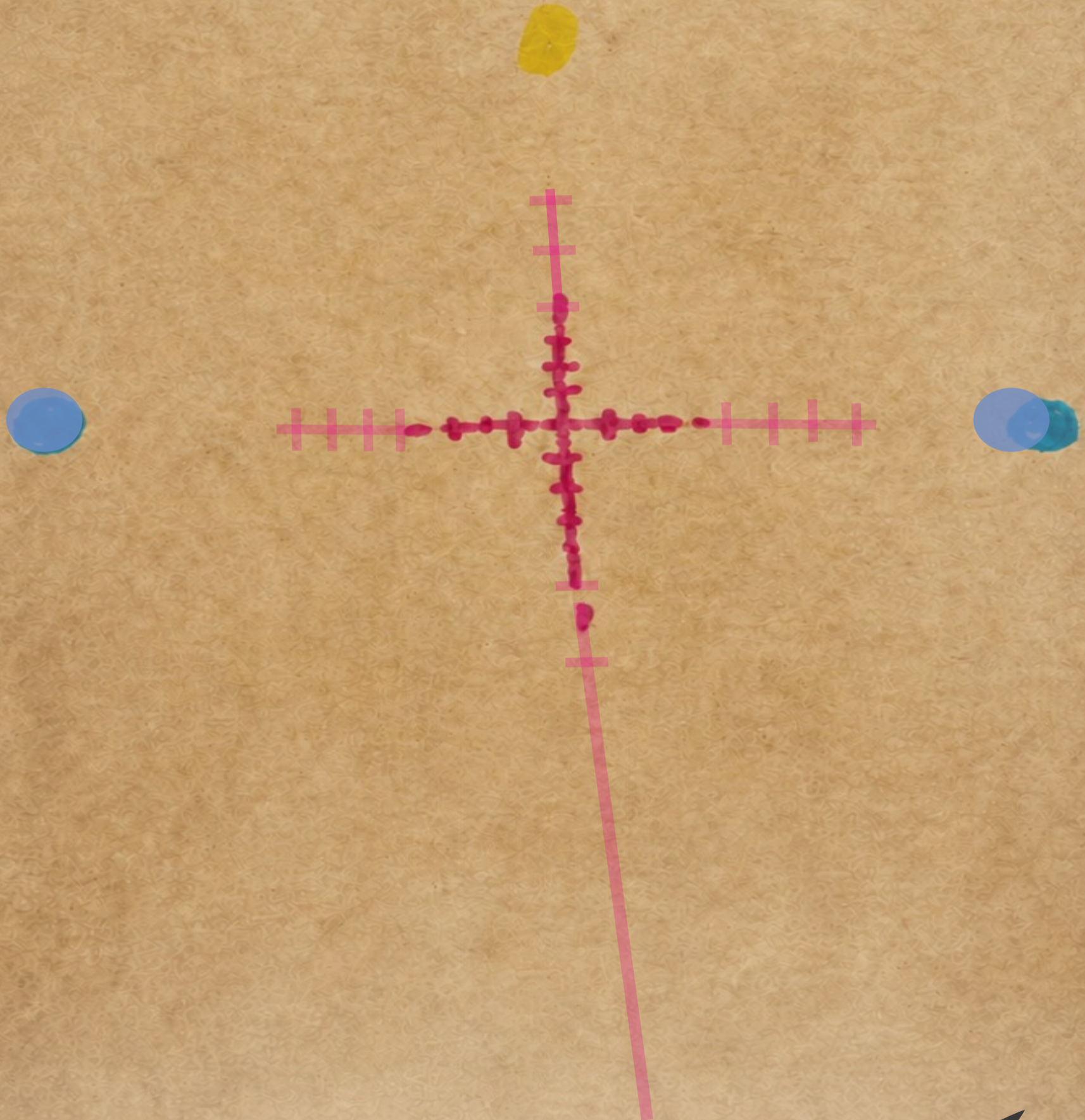
THE NORTHERN CROSS (MENDED)

GREEN OASIS DEDICATED TO THE HOMAGE OF THE VICTIMS WHO REST ON THE PROPERTY.



CONCEPTUAL MEMORY

The Northern Cross is born as a gesture of reparation and encounter, uniting what was once separated: memory and the present, victims and the living community. The points of intersection become spaces for dialogue and collective ritual. This cross represents the wound in the territory, which still breathes; this cross that the territory carries, born from the depths of the clandestine, where silence was a condemnation.



UNIVERSIDAD
NACIONAL
DE TUCUMÁN



THE NORTHERN CROSS (MENDEDED)

GREEN OASIS DEDICATED TO THE HOMAGE OF THE VICTIMS WHO REST ON THE PROPERTY.



It is the hidden passage of what was meant to be erased, and today this history emerges before us, crying out its truth, its memory, and its justice, placing us in the here and now, "HERE YOU WILL FIND ME."

The patches of this cross, running north to south and vice versa, aim to keep alive the memory of all the men who once passed through this place, and from west to east and vice versa, to keep alive the memory of the women who once passed through it. These patches commemorate the 40 places occupied by men and 40 places occupied by women in shed number 9, where they were "DETAINED," squatting, chained to the floor, in the darkness, deprived of their freedom. But these "PATCHES" today transform and represent 40 places of light, peace, tranquility, encounter, reflection, memory, truth, and justice, embodied in various gestures of urban planning.



A few decades ago, the author, composer, and music producer sang in his song: "I am from the Southern Cross, here and everywhere," our country looks to that constellation. But today we must clarify something within that cross: it is "here I am, I am from the Northern Cross," although things have happened... a new cross is emerging in the north.



UNIVERSIDAD
NACIONAL
DE TUCUMÁN



PARTICIPANTS:



ALUMNA: BIANCHI, FLORENCIA



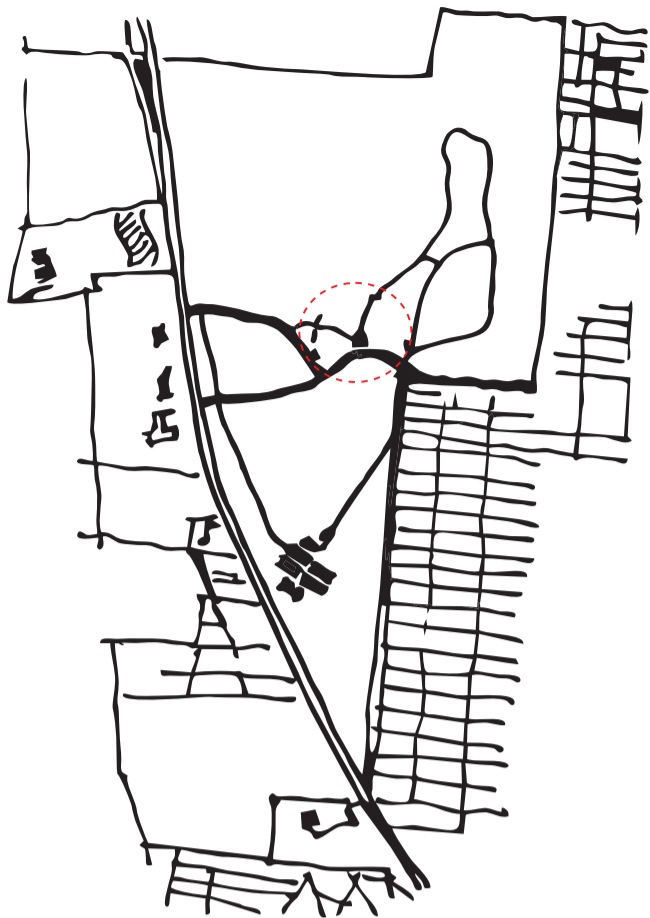
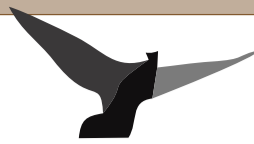
ALUMNO: LEDESMA, FRANCO



ALUMNA: MEDINA, AYELEN ESTEFANIA



ALUMNO: ORIETA, LUCAS FELIPE



DESCRIPTIVE MEMORANDUM: URBANIZATION OF THE FORMER MIGUEL DE AZCUÉNAGA ARSENAL SITE

Our Northern Cross alludes to the constellation of the Southern Hemisphere, but brought to northern Tucumán, as a gesture of reparation, encounter, and healing. The urban architecture project on the site of the former Tucumán Arsenal is based on the symbolic concept of the "Northern Cross," as a gesture of reparation, encounter, and union, which reinterprets the Southern Cross (Crux) and the Andean Chakana.

THE SECTOR WITH ITS LOAD

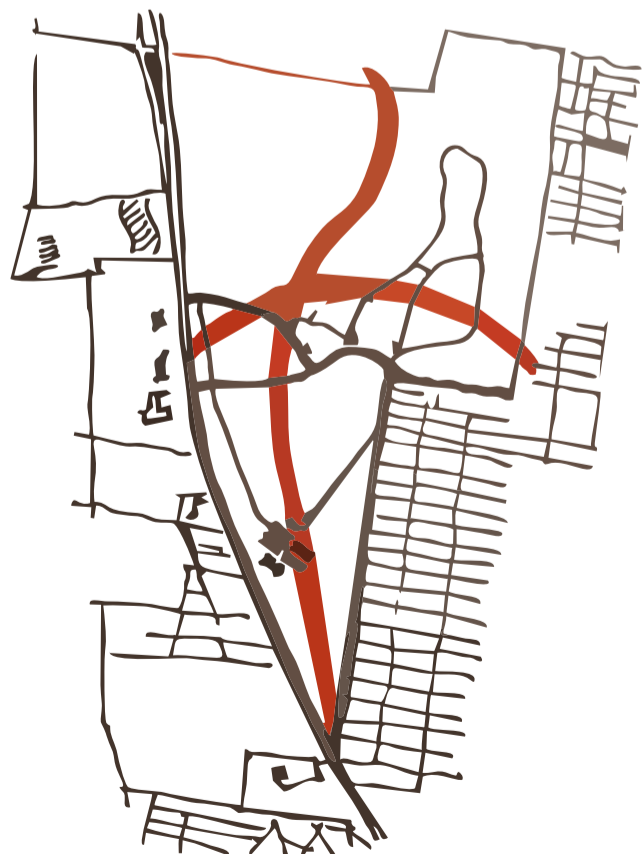


As a symbol and purpose, the "Northern Cross" is an affirmation of southern cultural identity (alluding to the lyrics of a Charly García song, "Cruz del Sur") that seeks to establish a new ethical and spatial order in a historical site of repression.

In its Urban Organization: The figure of the cross functions as the organizing matrix of the site.

The Meeting Points: The four ends of the cross are transformed into plazas, acting as nodes of convergence and community life. They symbolize the points of the Chakana that unite the earthly and the cosmic, transforming the area into a public space for dialogue.

THE SEAMS/PATCHES



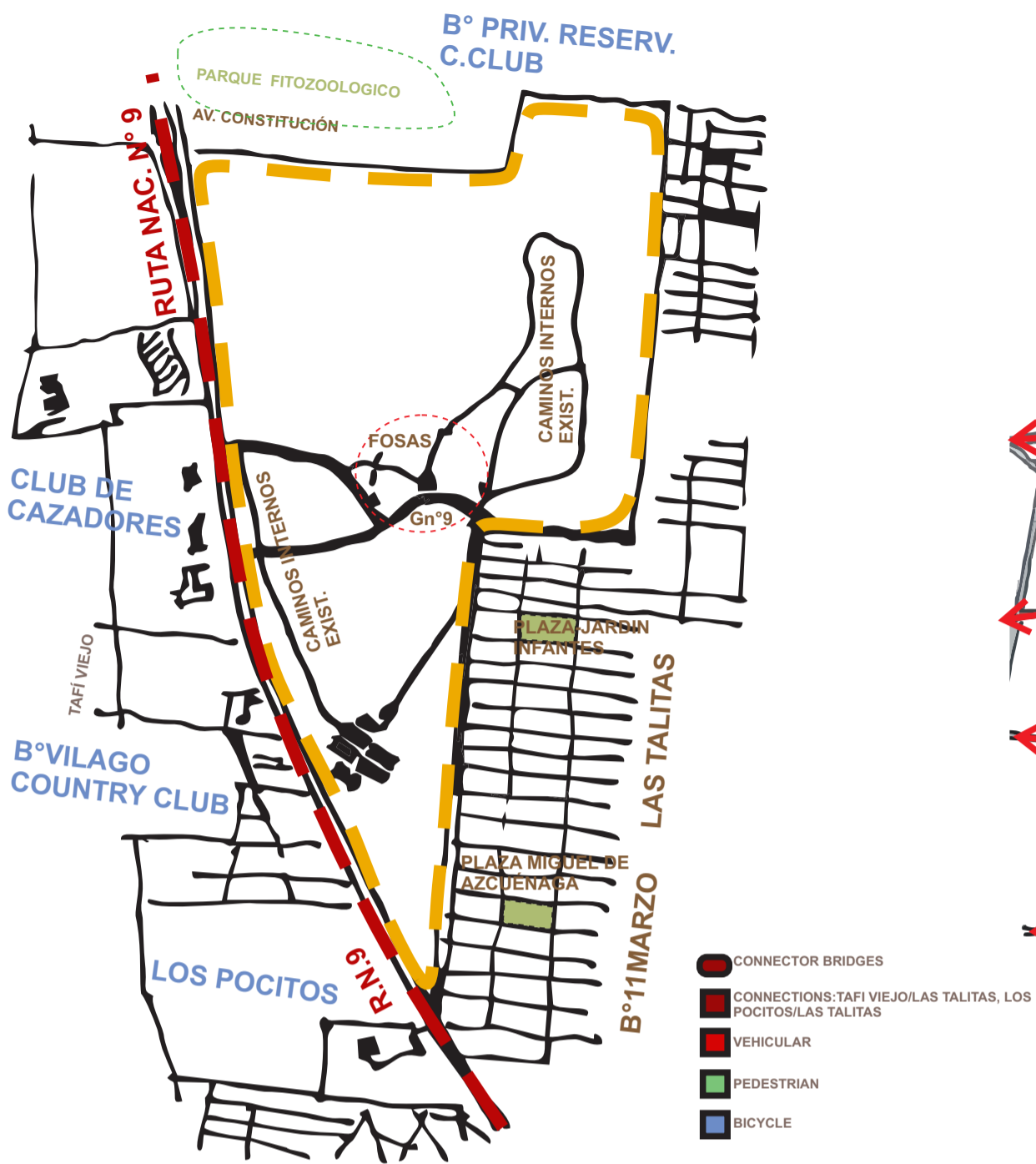
The Connecting Pathways: The circulation routes that connect these plazas form the arms of the cross. These paths represent the "bridges" (Chakana) or paths toward truth and justice, facilitating the flow and overcoming the historical confinement of the Arsenal.

In essence, the design uses a profound cosmic and cultural symbol to create an ethical and urban compass that guides the former Arsenal site from a past of darkness to a future of light, memory, and encounter.

THE PAIN



URBAN STRUCTURE AND PROPOSALS

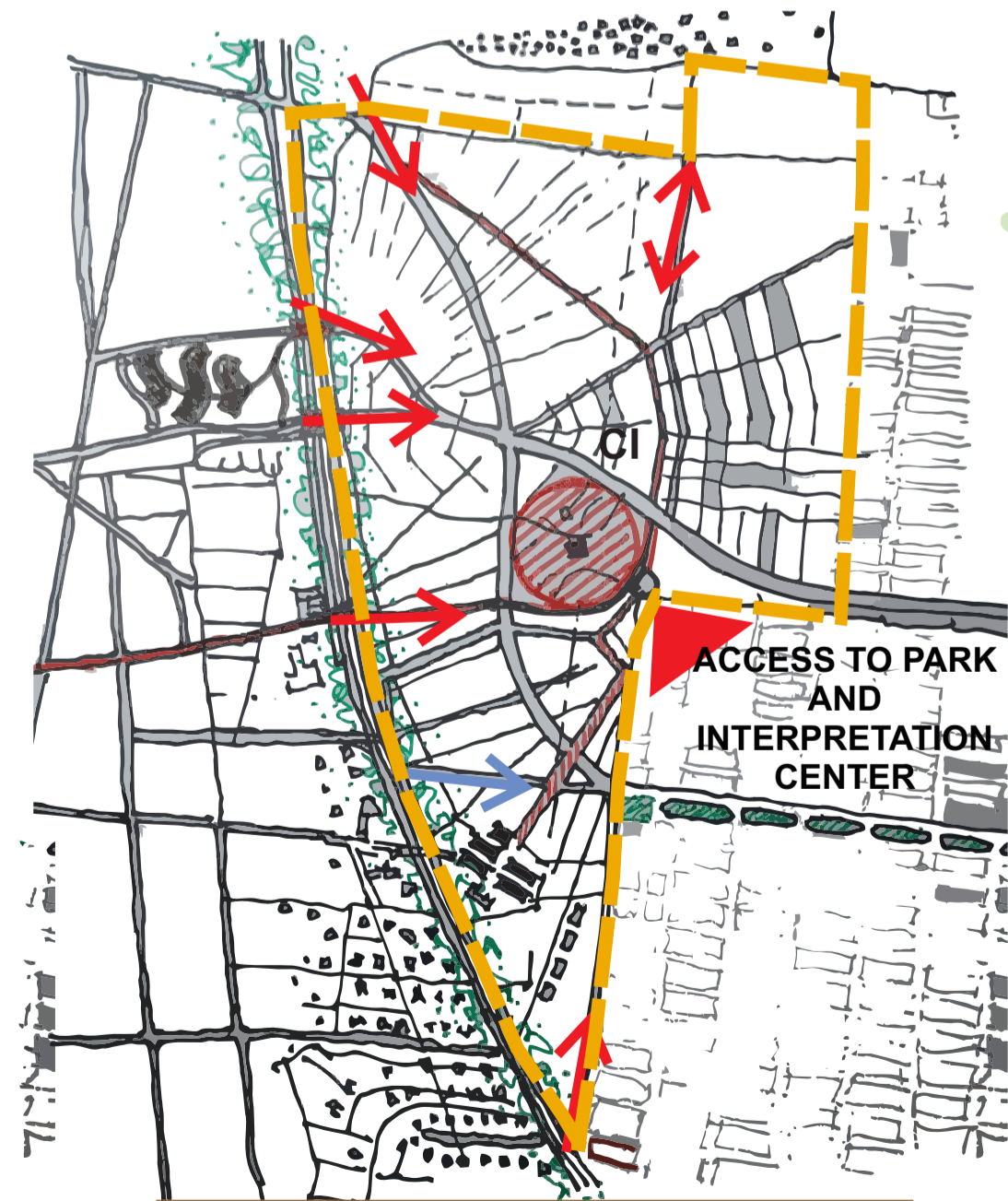


EXISTING URBAN STRUCTURE SCALE 1:7500



PROPOSED URBAN STRUCTURE SCALE 1:7500

URBAN STRUCTURE AND PROPOSALS



ACCESS AND LIMITS SCALE 1:7500

THEORETICAL FRAMEWORK

RESILIENT CITIES

Bogotá, a global leader in its “Green Corridors,” a project that reduced air temperature and mitigated the urban heat island effect. Furthermore, it was one of the first cities in Latin America to be named a Resilience Hub by the UN initiative, highlighting its social and urban innovation.

OBLITOPIAS

Transforming urban voids, degraded areas and obsolete infrastructure into new spaces of collective opportunity, from residual territory to productive, environmental and social territory.

THE 15-MINUTE CITY

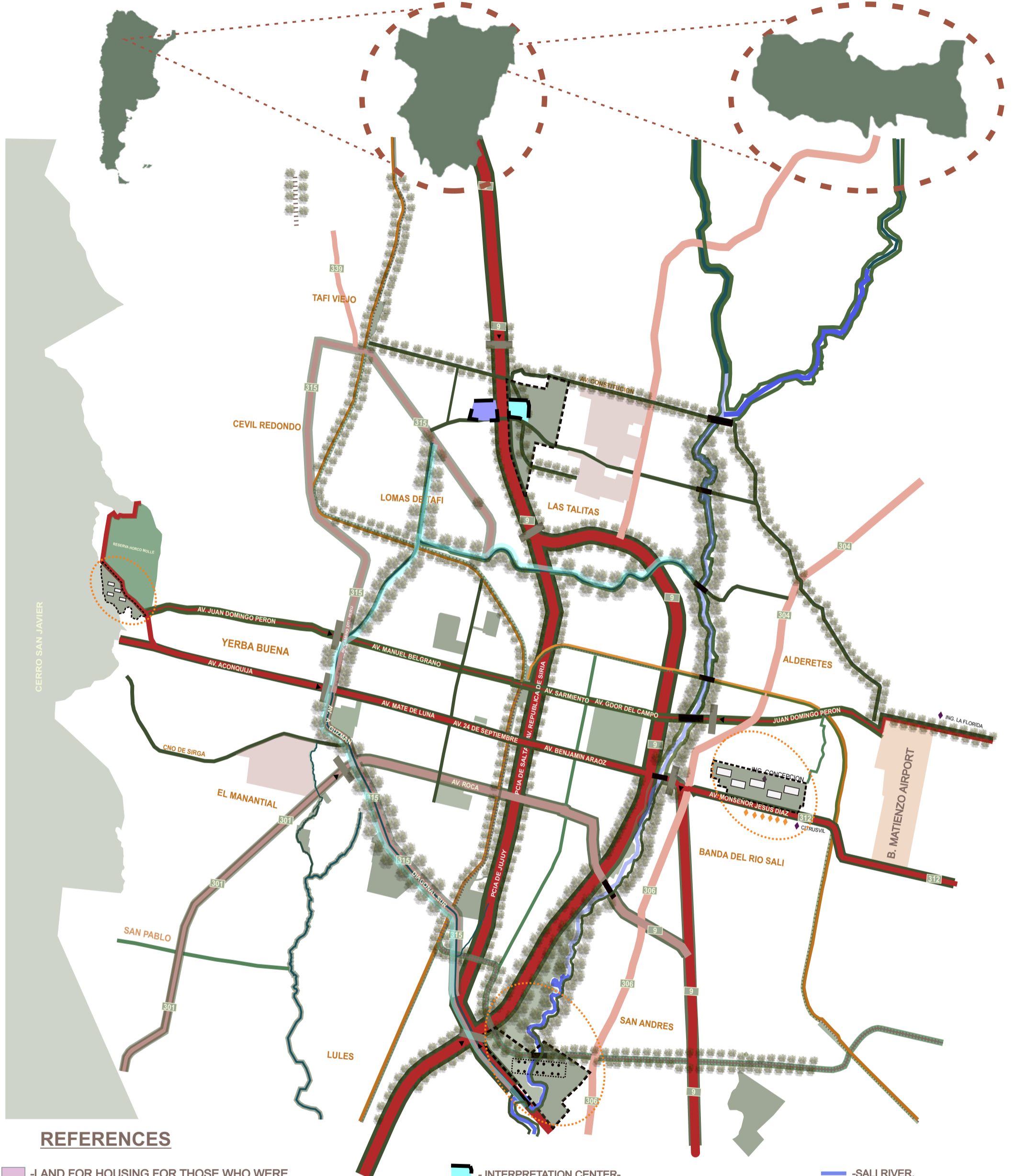
The decentralization of urban functions through micro-centers allows for bringing work, education, recreation, and services closer to the population.

URBAN ANALYSIS - MACRO SCALE

COUNTRY: ARGENTINA


PROVINCE: TUCUMÁN

MUNICIPALITY: TAFI VIEJO



 -LAND FOR HOUSING FOR THOSE WHO WERE EXPROPRIATED.

 -SECTOR TO BE INTERVENED.

 MICRO-CENTERS:
 - EAST (INDUSTRIAL PARK).
 - SOUTH (TECHNOLOGY PARK).
 - WEST (UNIVERSITY RESIDENCES AND HIGH-PERFORMANCE CENTER).
 - NORTH (OUR PROPOSALS).

 -GREEN SPACES TO CONNECT.

 - INTERPRETATION CENTER-MEMORY MUSEUM.

 -PELLI CIVIC CENTER.

 -ARTERIES OR GREEN CORRIDORS.

 -EXPRESSWAYS.

 -GREEN-BLUE CORRIDORS.

 -SALI RIVER.

 -RAILWAY TRACKS.

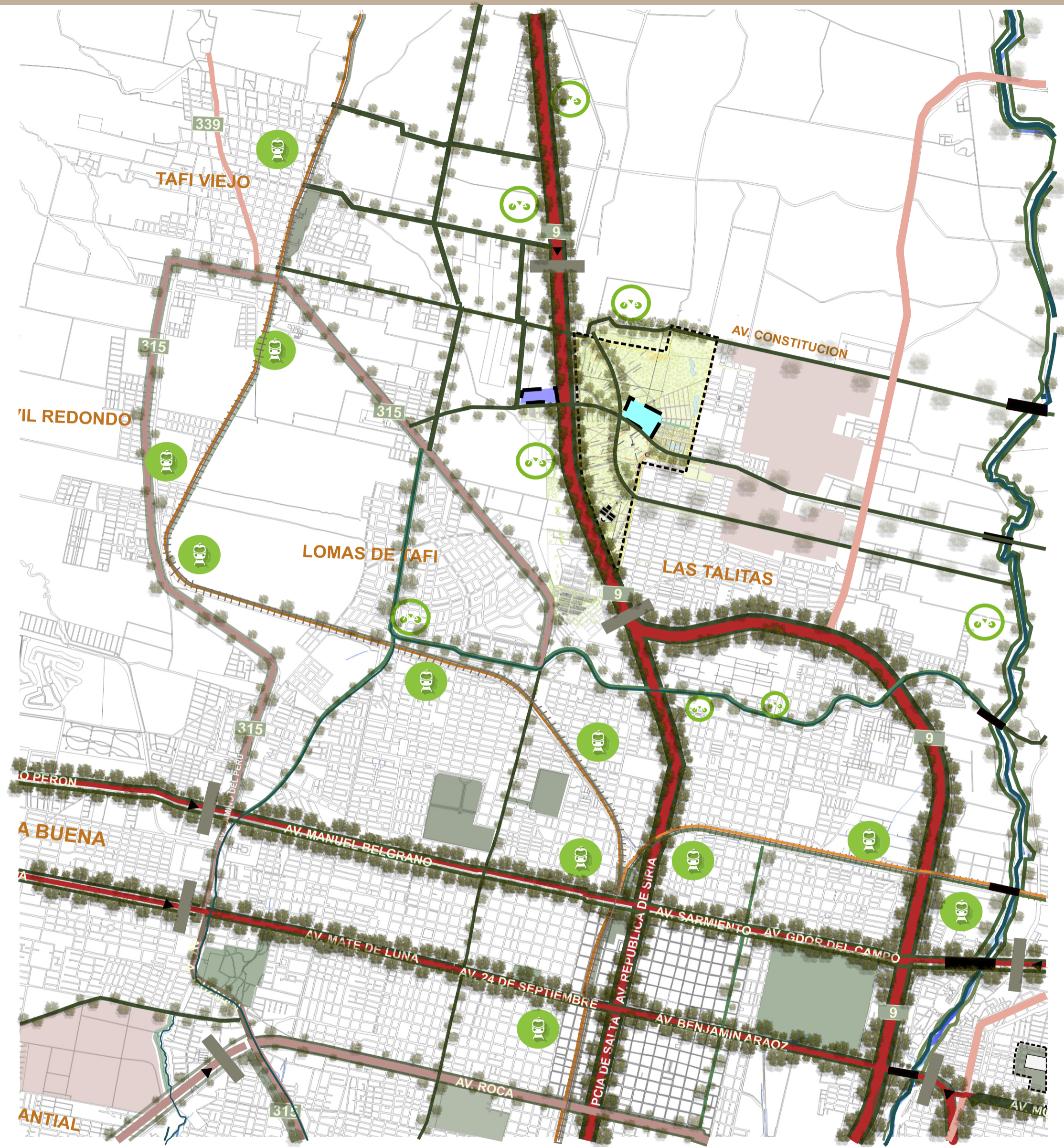
 - NORTH AND SOUTH CHANNELS.

 -ACCESS TO THE CITY



UNIVERSIDAD NACIONAL DE TUCUMÁN





REFERENCIAS

- LAND FOR HOUSING FOR THOSE WHO WERE EXPROPRIATED.
- SECTOR TO BE INTERVENED.
- GREEN SPACES TO CONNECT.
- EXPRESSWAYS.
- INTERPRETATION CENTER- MEMORY MUSEUM.
- PELLI CIVIC CENTER.
- ACCESS TO THE CITY.
- CICLOVA EN CORREDORES VERDES
- TREN ELECTRICO.
- ARTERIES OR GREEN CORRIDORS.
- GREEN-BLUE CORRIDORS.
- SALI RIVER.
- RAILWAY TRACKS.
- NORTH AND SOUTH CHANNELS.





APPROACH 1



URBAN CUTTINGS

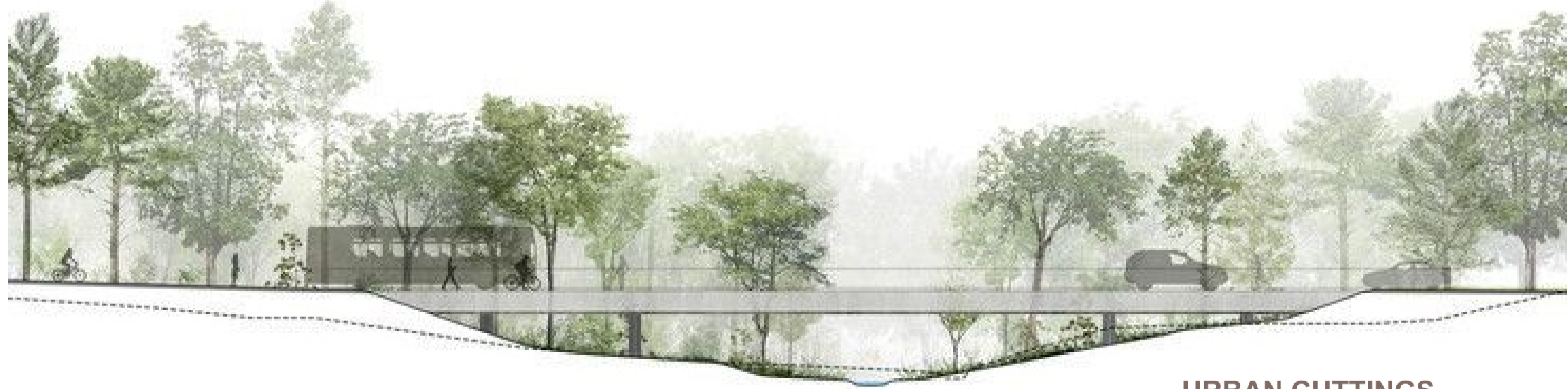


PROPOSAL RENDERS

SECTORIZED URBAN PROPOSAL



APPROACH 2

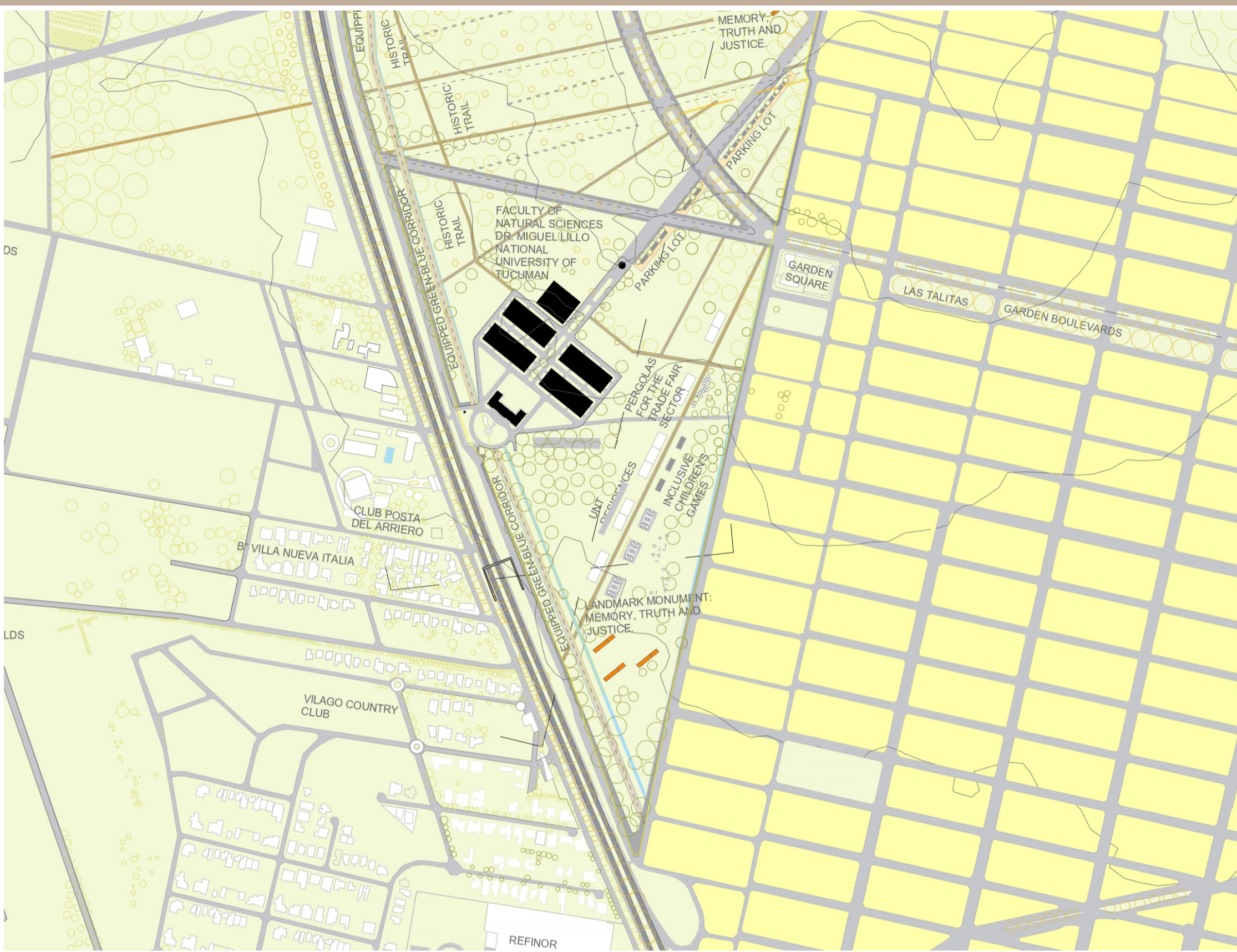


URBAN CUTTINGS



PROPOSAL RENDERS

SECTORIZED URBAN PROPOSAL



APPROACH 3



URBAN CUTTINGS



URBAN CUTTINGS

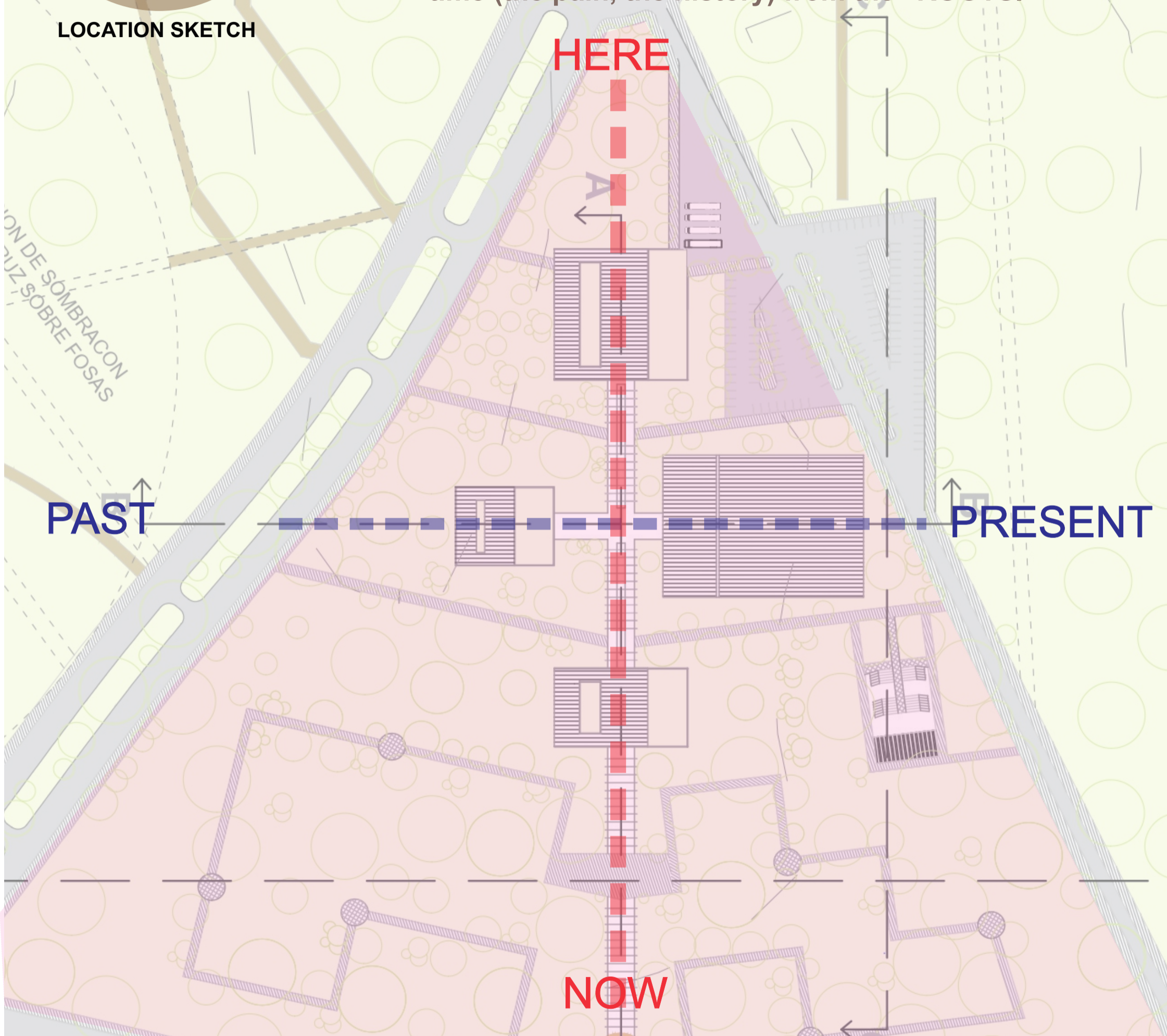
**CONCEPTUAL MEMORY OF THE INTERPRETATION CENTER
"HARVEST OF MEMORY"**

The interpretation center is an essentially symbolic and functional space, designed to be the driving force for reflection and collective memory of the park, within a cross-shaped configuration.

The concept of "HARVEST" implies what has been gathered over time (the pain, the history) from the "ROOTS."



LOCATION SKETCH



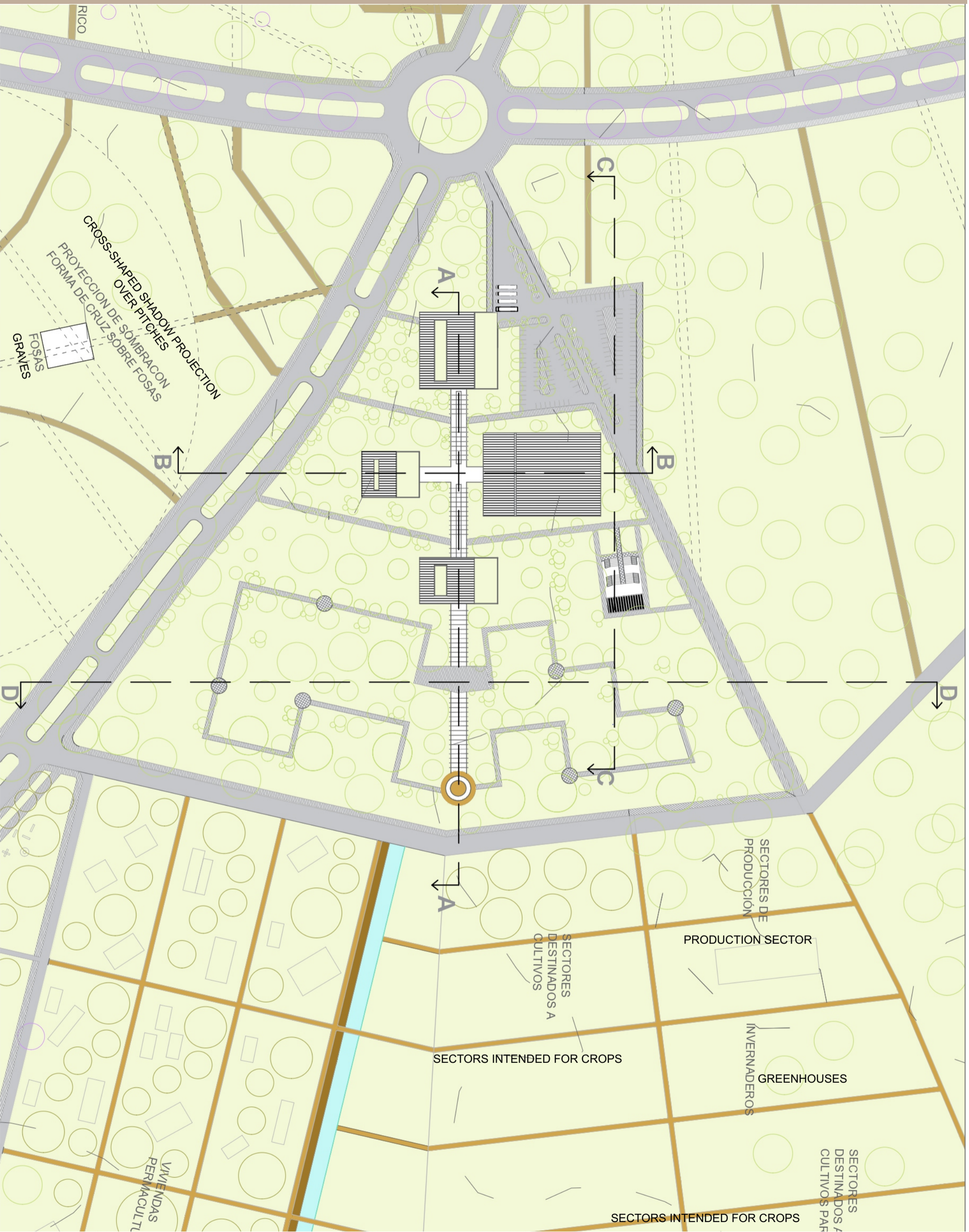
THE TEMPORAL CROSSROADS: PAST, PRESENT, AND FUTURE

The cross, as the intersection of two lines, symbolizes the inescapable encounter of time:

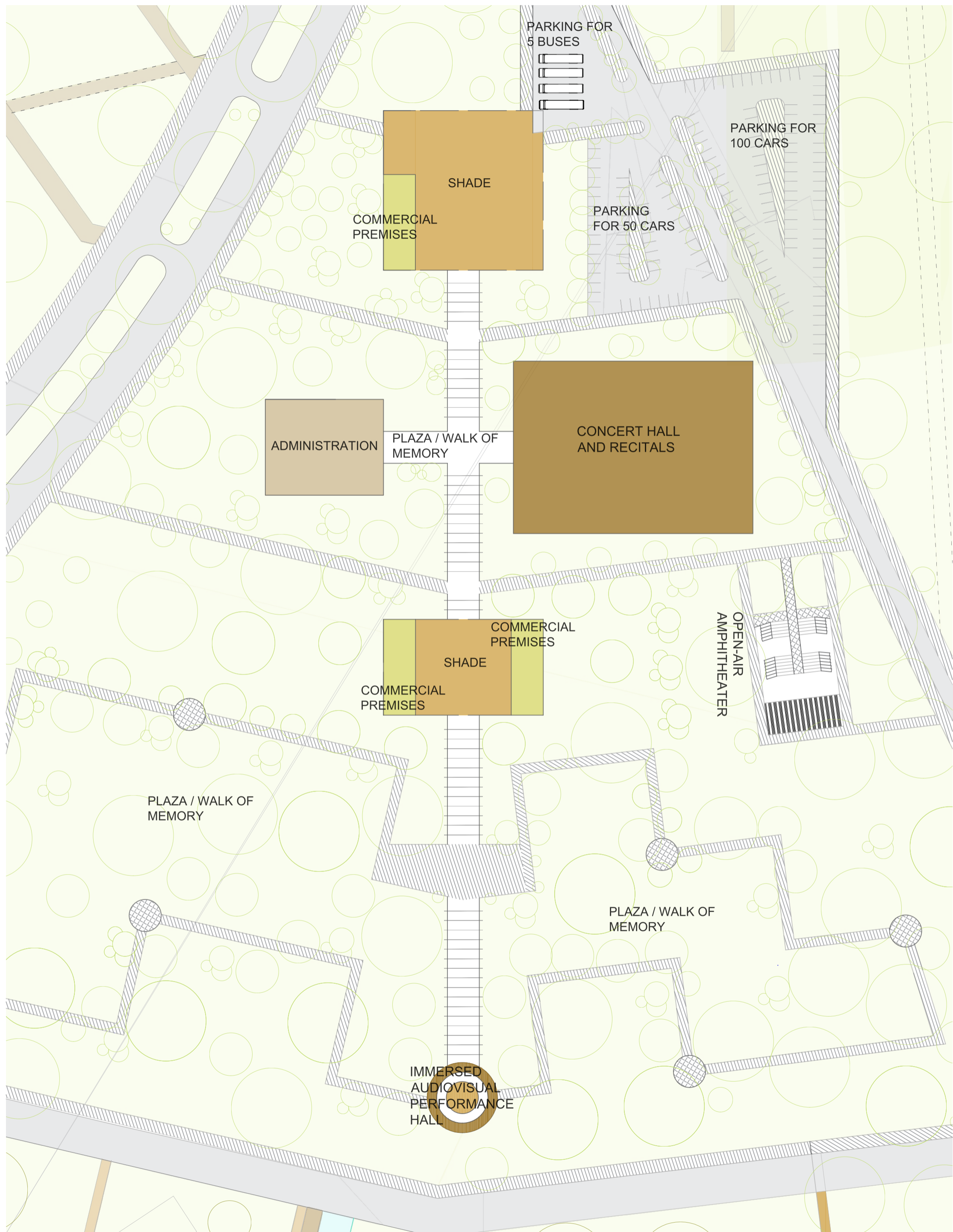
Longitudinal axis (PAST-PRESENT): Represents the historical and narrative line, tracing the history of terror (past) to the consciousness of the present. It is the axis that looks at the trace and the pain.

Transverse axis (THE HERE AND NOW): Symbolizes action and social projection. It is the axis of participation, dialogue, and urban life, looking toward the future that is built from memory.





INTERPRETATION CENTER - PLANIMETRY



GROUND FLOOR



UNIVERSIDAD
NACIONAL
DE TUCUMÁN

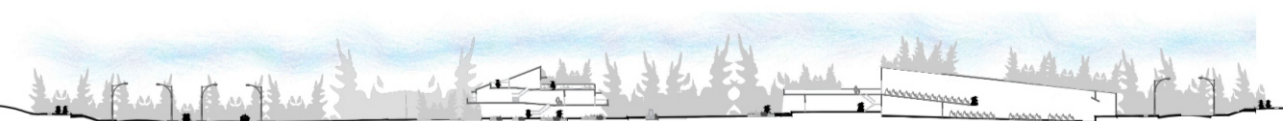




FIRST FLOOR PLAN



SECTION A-A



SECTION B-B



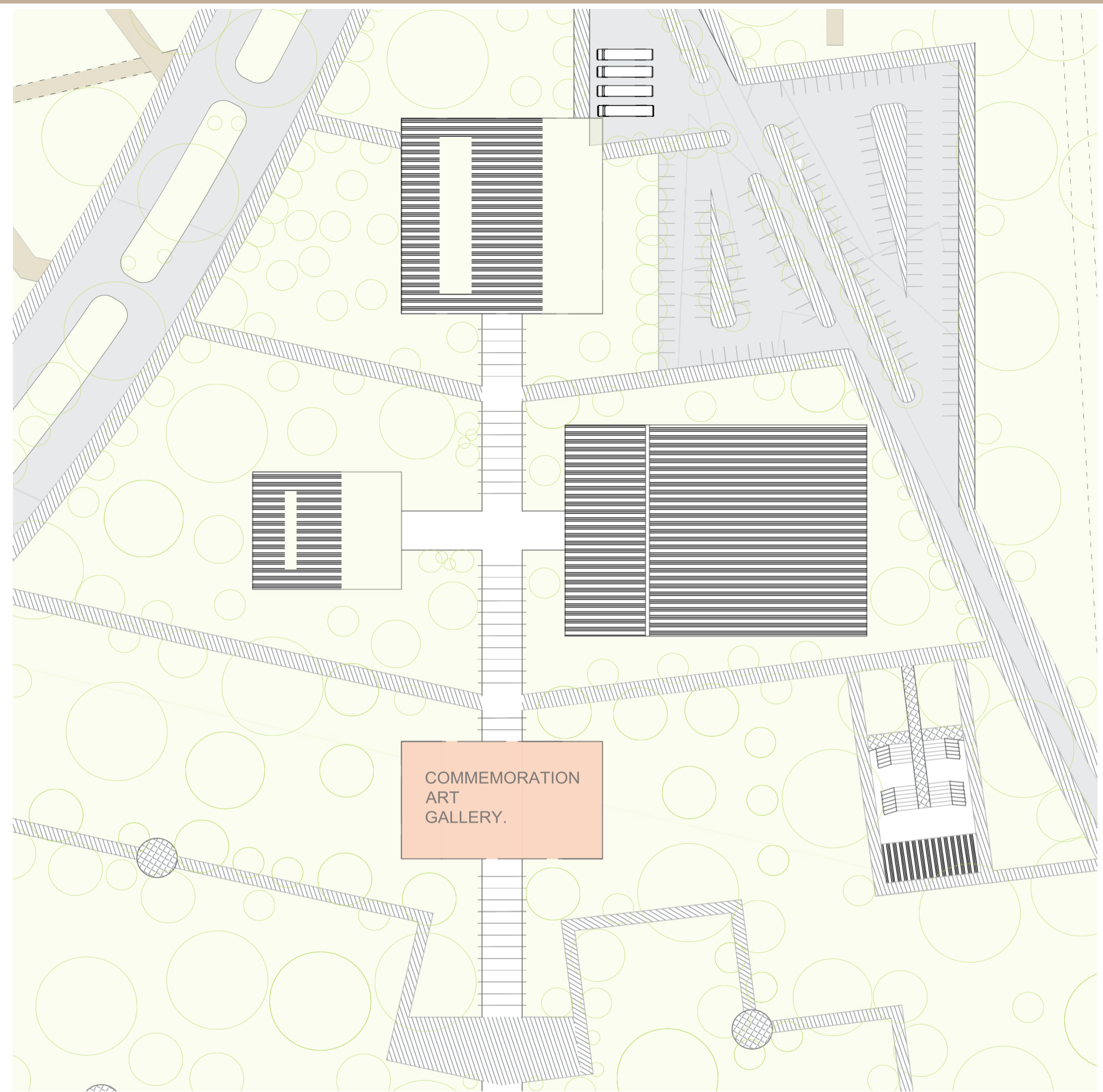
SECTION C-C



SECTION D-D

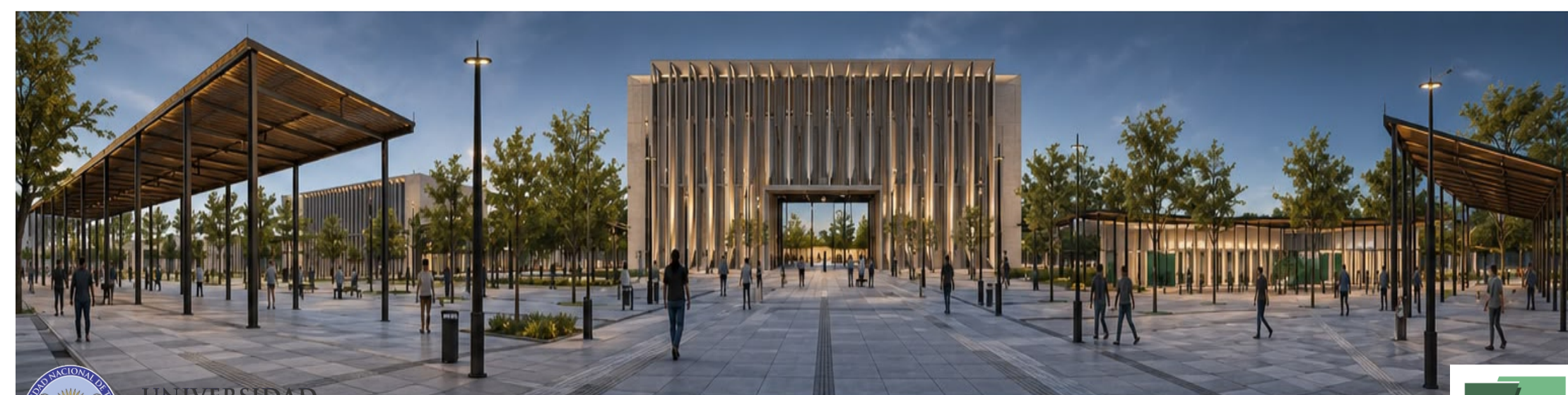


INTERPRETATION CENTER - PLANIMETRY



2ND FLOOR PLAN

PROJECT RENDERS



UNIVERSIDAD
NACIONAL
DE TUCUMÁN



PROJECT RENDERS



DAYTIME AERIAL VIEW



ACCESS TO THE INTERPRETATION CENTER



NIGHT AERIAL VIEW



PEDESTRIAN VIEW OF THE CLASSROOM COMPLEX

PHOTOS OF THE MODEL

