



Chapel of Little Jesus of Prague in Brazil

DSM2 MAIO - BOHATÝ - HASAN

VOJTĚCH ŠAŠEK

2025/2026

FACULTY OF CIVIL ENGINEERING
CTU IN PRAGUE



programme

The project focuses on the design of a chapel in the city of Campo Grande, Brazil. The proposed site is located within the grounds of the Santa Casa hospital complex. The chapel is conceived as a quiet spiritual refuge integrated into the healthcare

environment. Inside, three statues will be displayed, including the Little Jesus of Prague, giving the space both symbolic and devotional significance. The new chapel aims to bring peace and trust in God to the hospital area.

concept

The concept is centered on light. Sunlight enters the chapel throughout the day, guiding visitors toward the circular altar (eternity and purity). The space reflects biblical references: it is divided into 7 sections recalling the seven days of Creation, culminating at the altar and rising upward. The cross appears both inside and outside, reinforcing spiritual presence. A single entrance ensures privacy, while light materials create a bright atmosphere.

ETERNITY & PURITY



WORK WITH LIGHT



SEVEN SEGMENTS



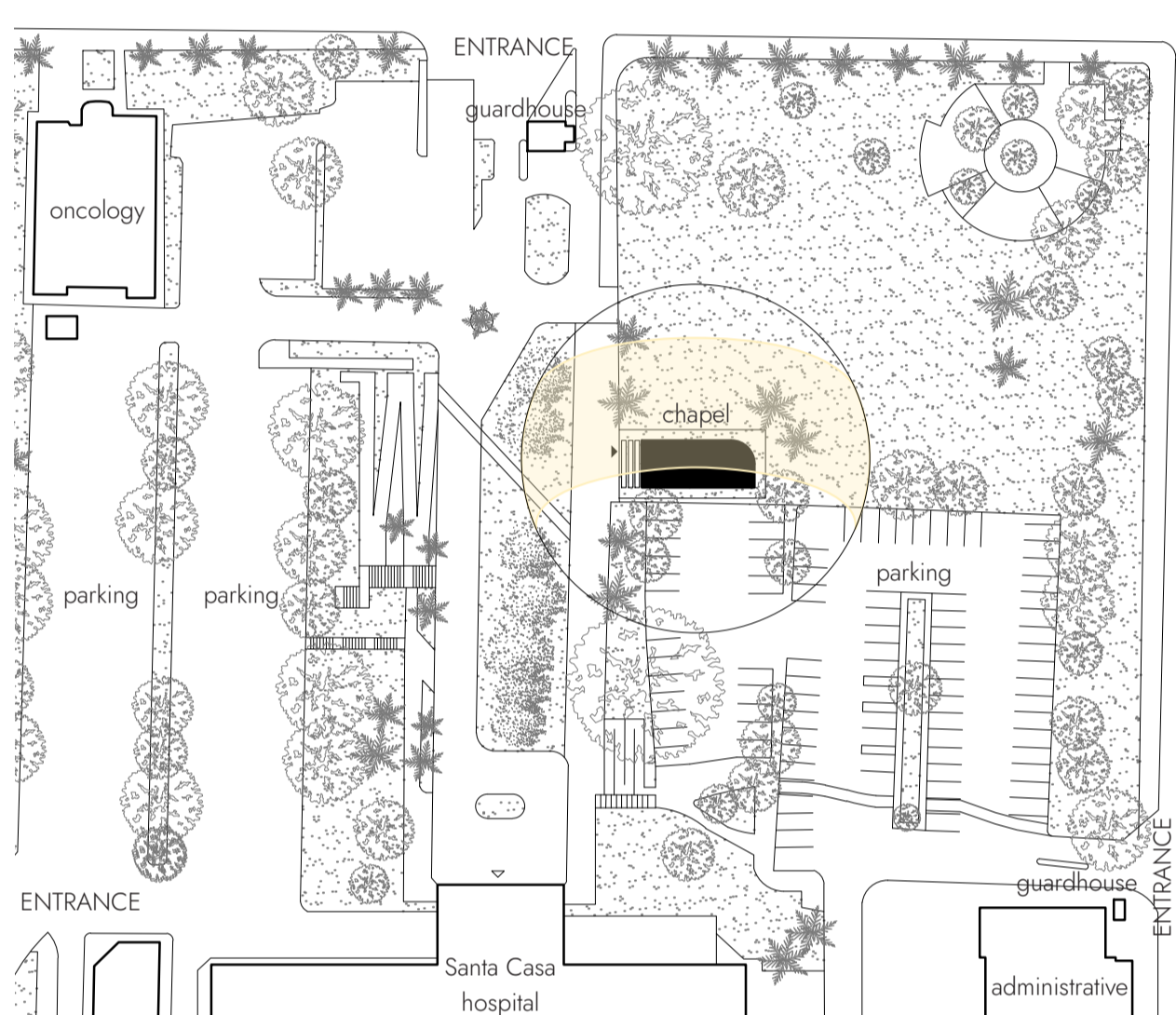
GRADATION



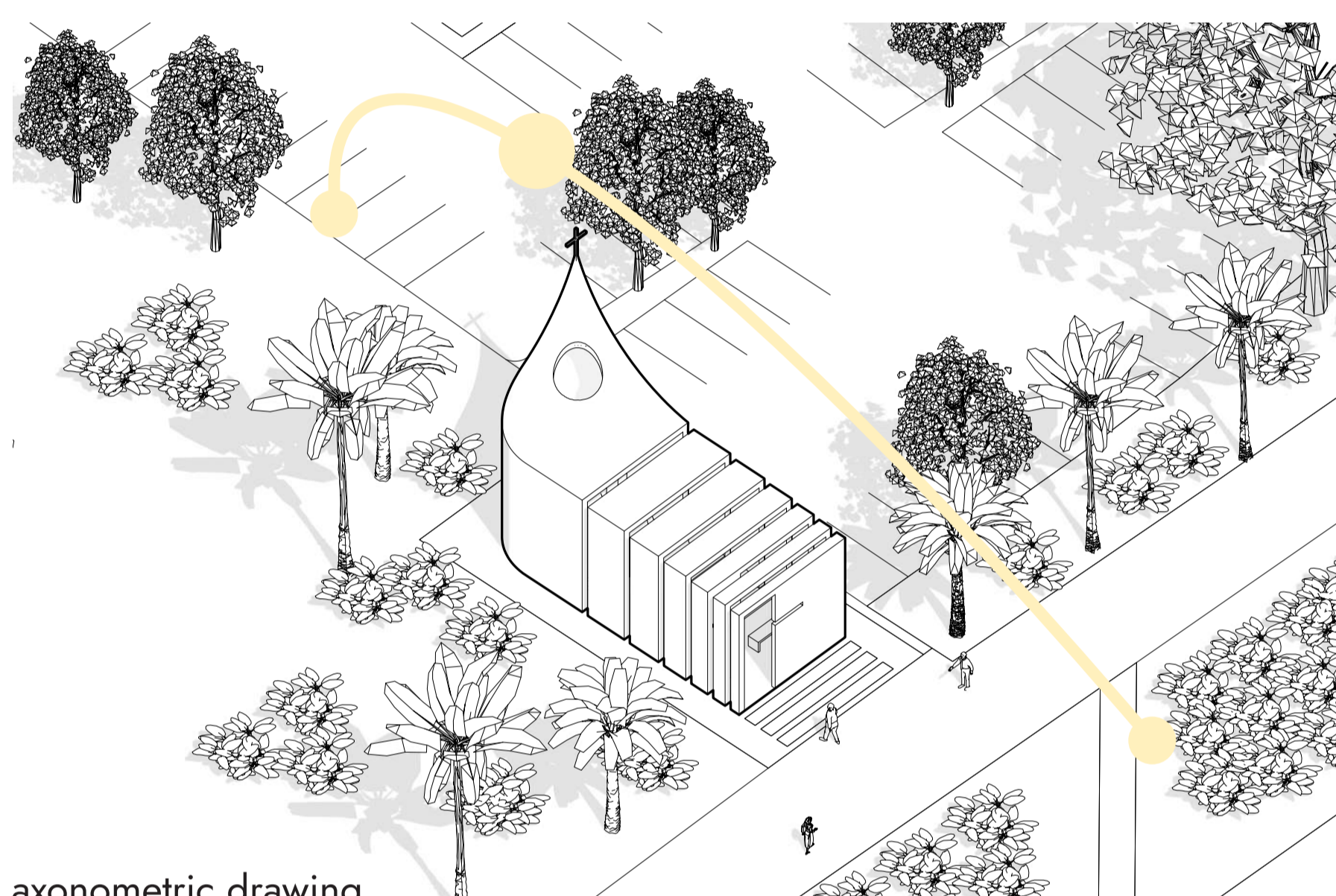
PRIVACY



wider context



site plan | 1:750



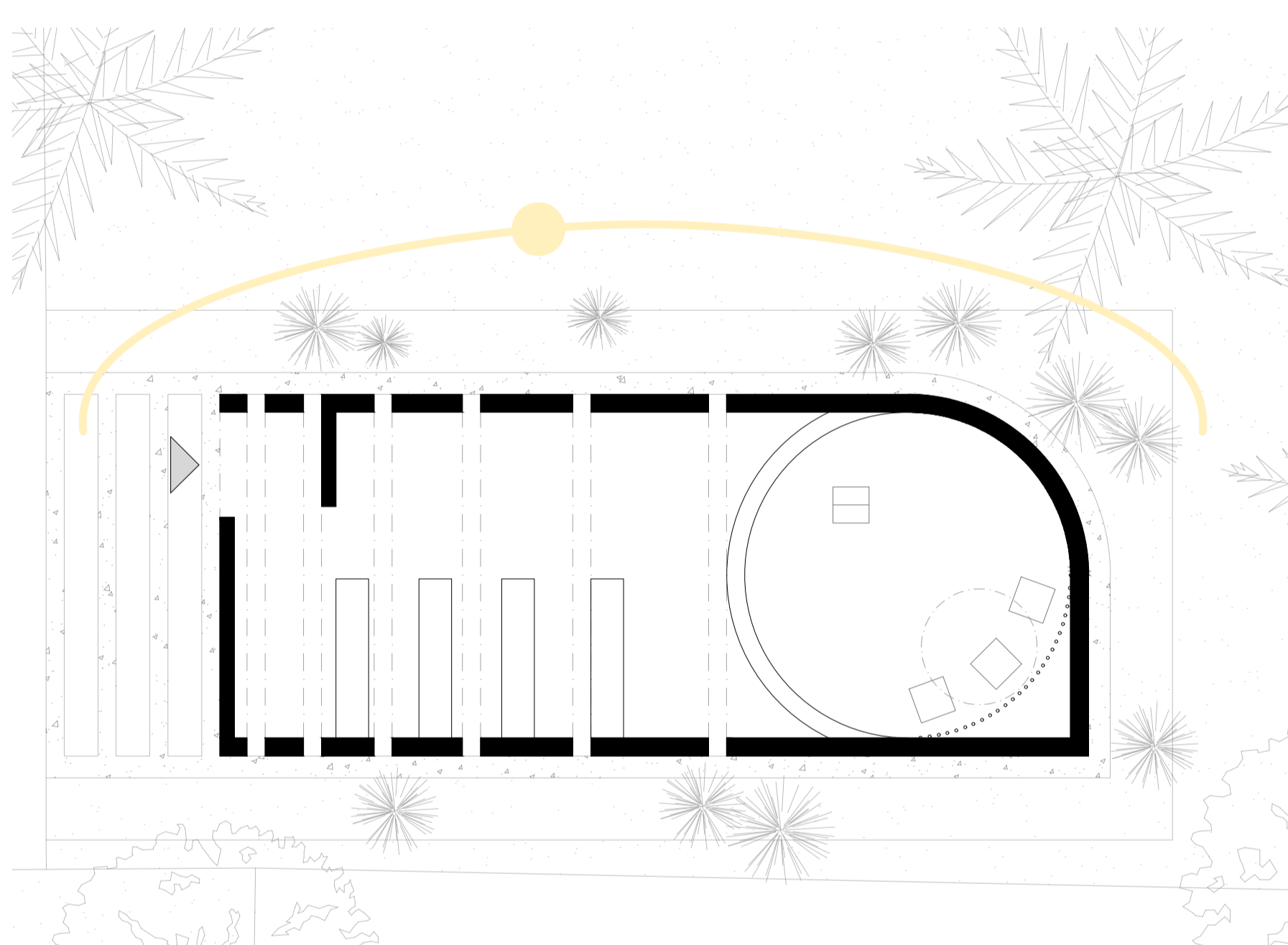
axonometric drawing



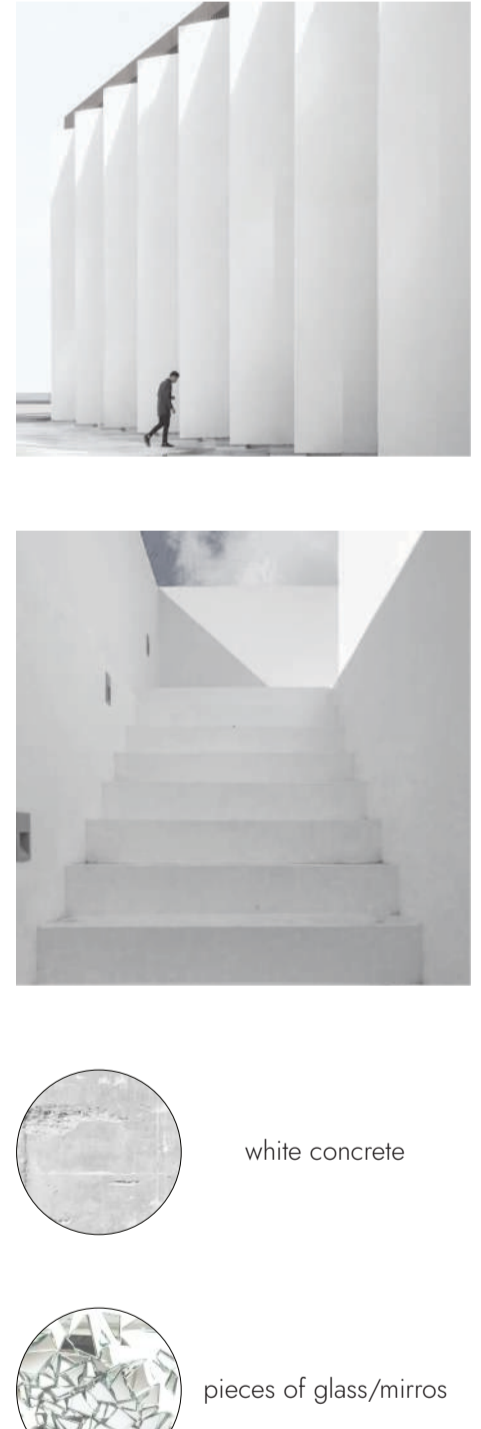
references



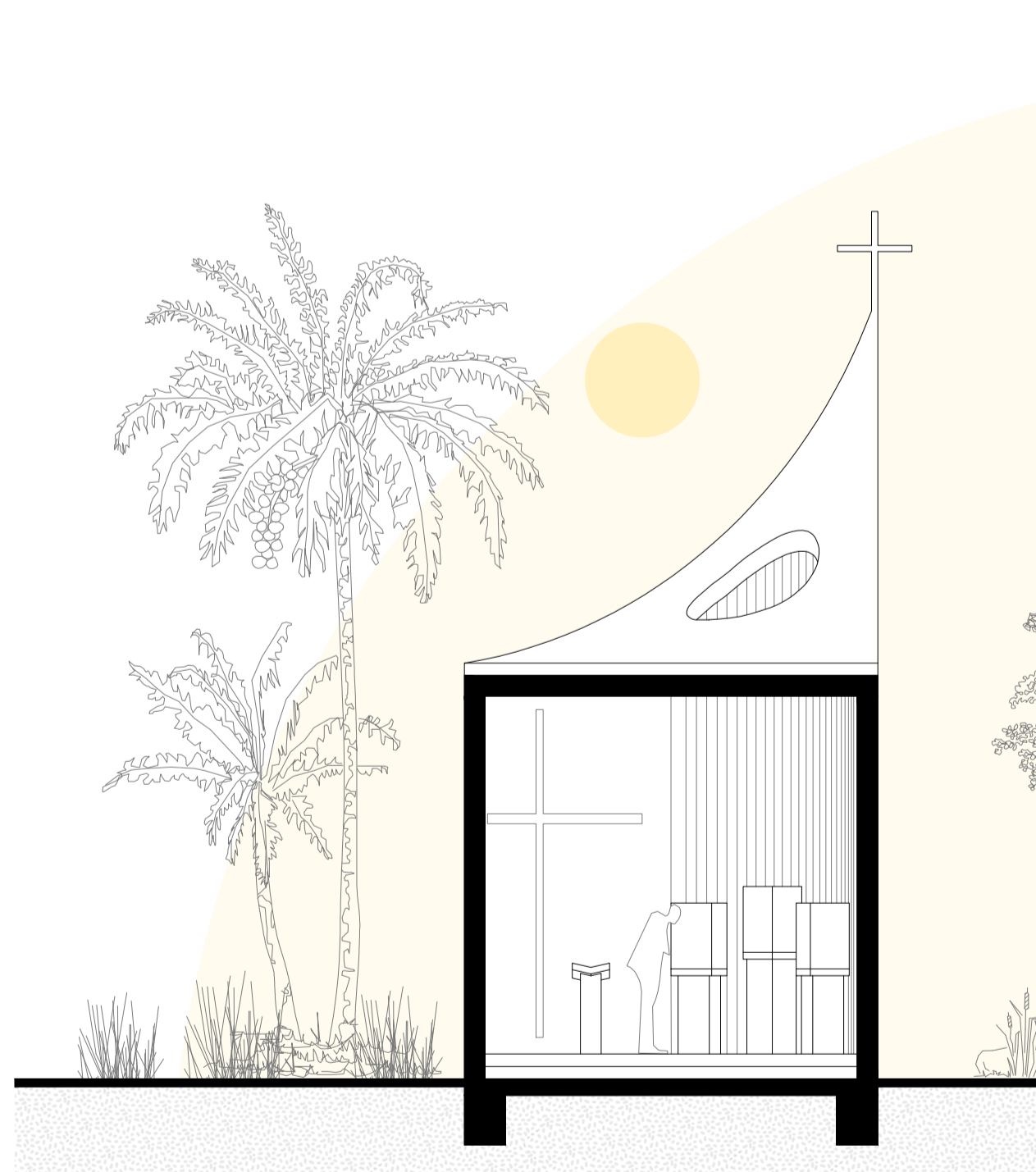
first sketches & study model



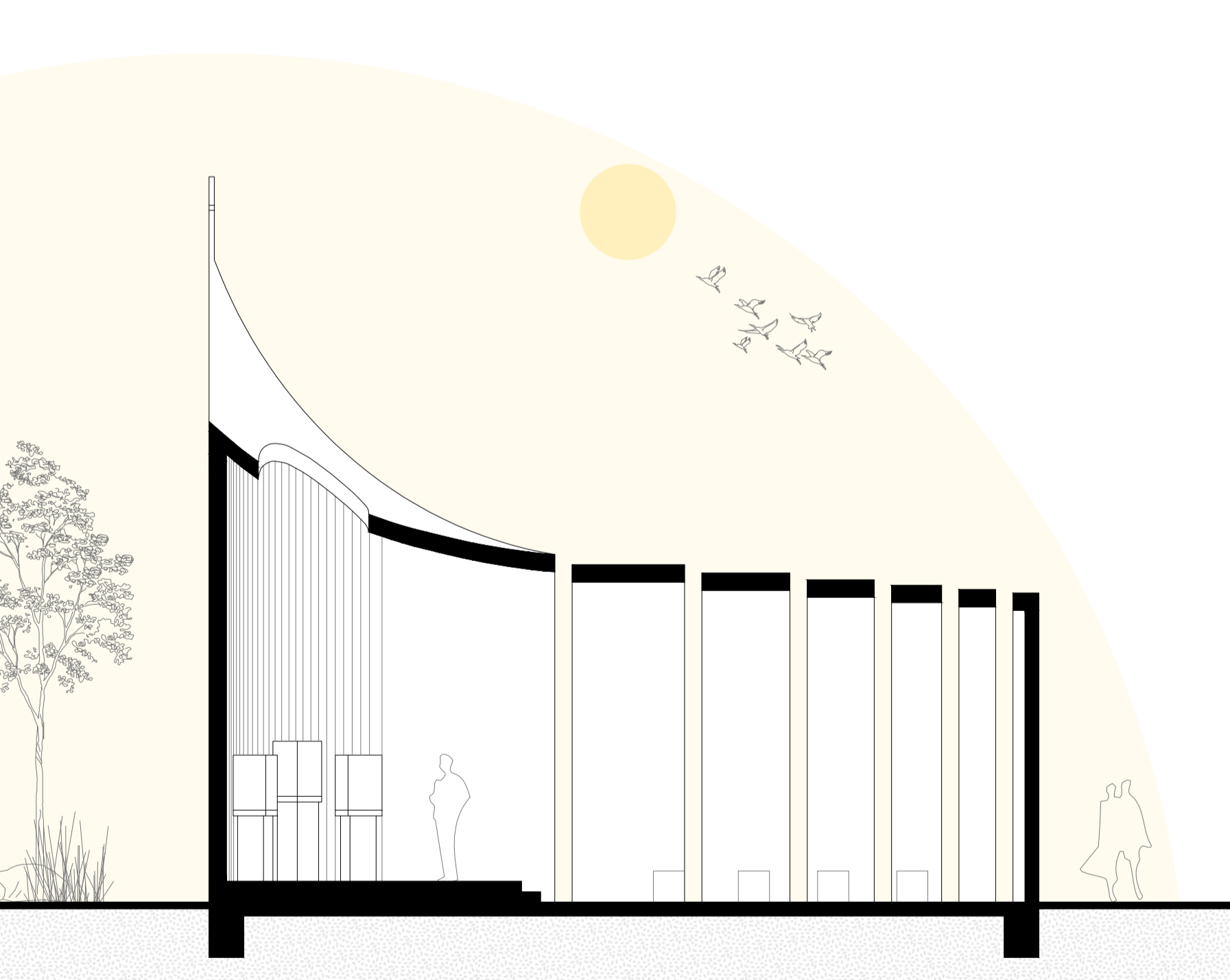
ground floor plan | 1:75



materials



cross section | 1:75



longitudinal section | 1:75



south elevation | 1:100

west elevation | 1:100

north elevation | 1:100

