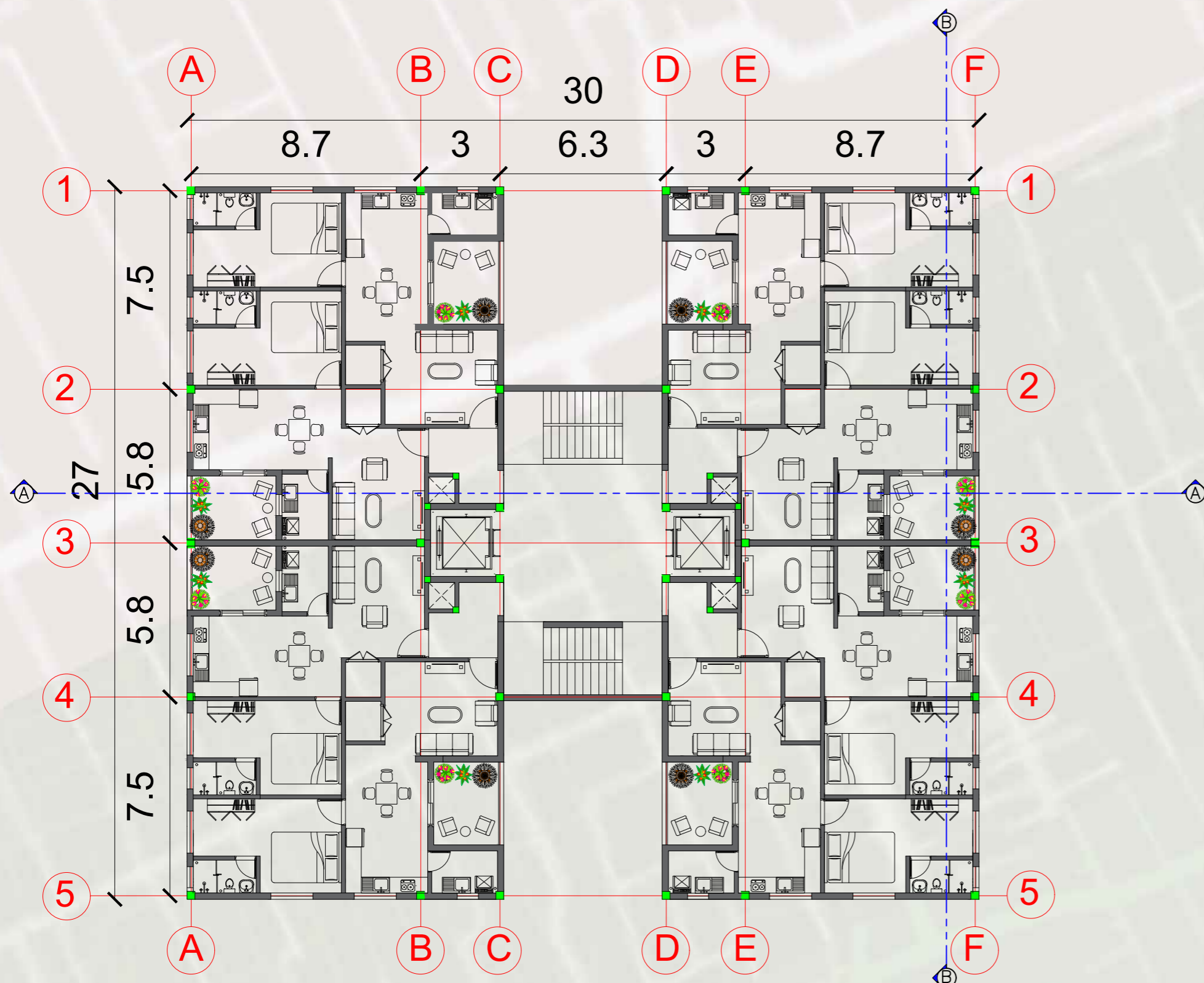


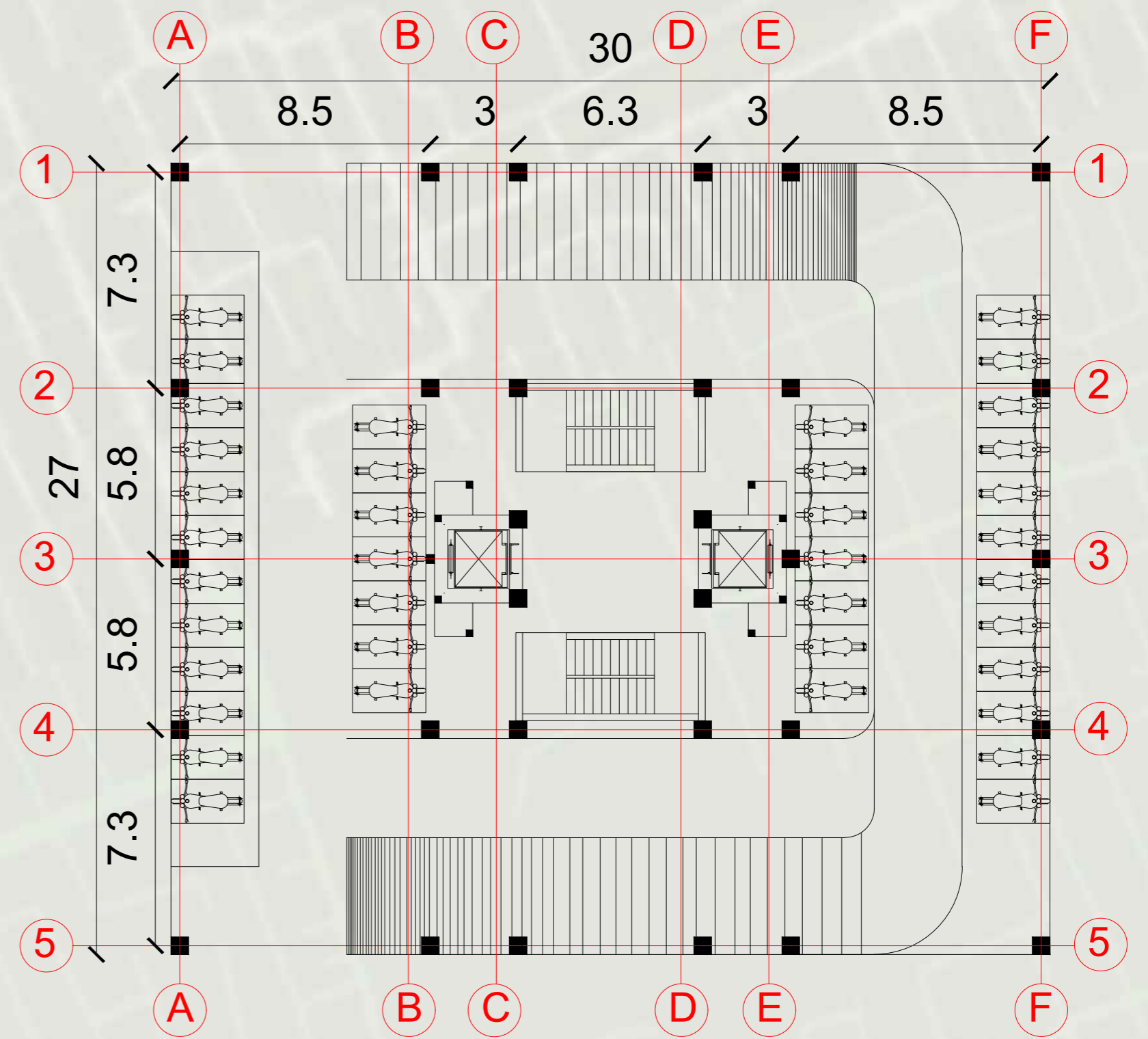
LIG BLOCK

The LIG block (**Low-Income Group block**) in your site can be designed to provide affordable housing while ensuring basic comfort and functionality. The design can focus on cost-effectiveness, space optimization, and community living. Key features might include:

- **Compact Residential Units:** 1BHK or 2BHK apartments or single-story houses with efficient layouts to minimize costs.
- **Affordability and Durability:** Use of cost-effective construction techniques and materials while maintaining structural integrity.
- **Community Living Focus:** Clustered housing units to encourage interaction and shared resources like water tanks and courtyards.
- **Parking Provisions:** Dedicated spaces for two-wheelers and cycles, with minimal car parking.



BLOCK FLOOR PLAN

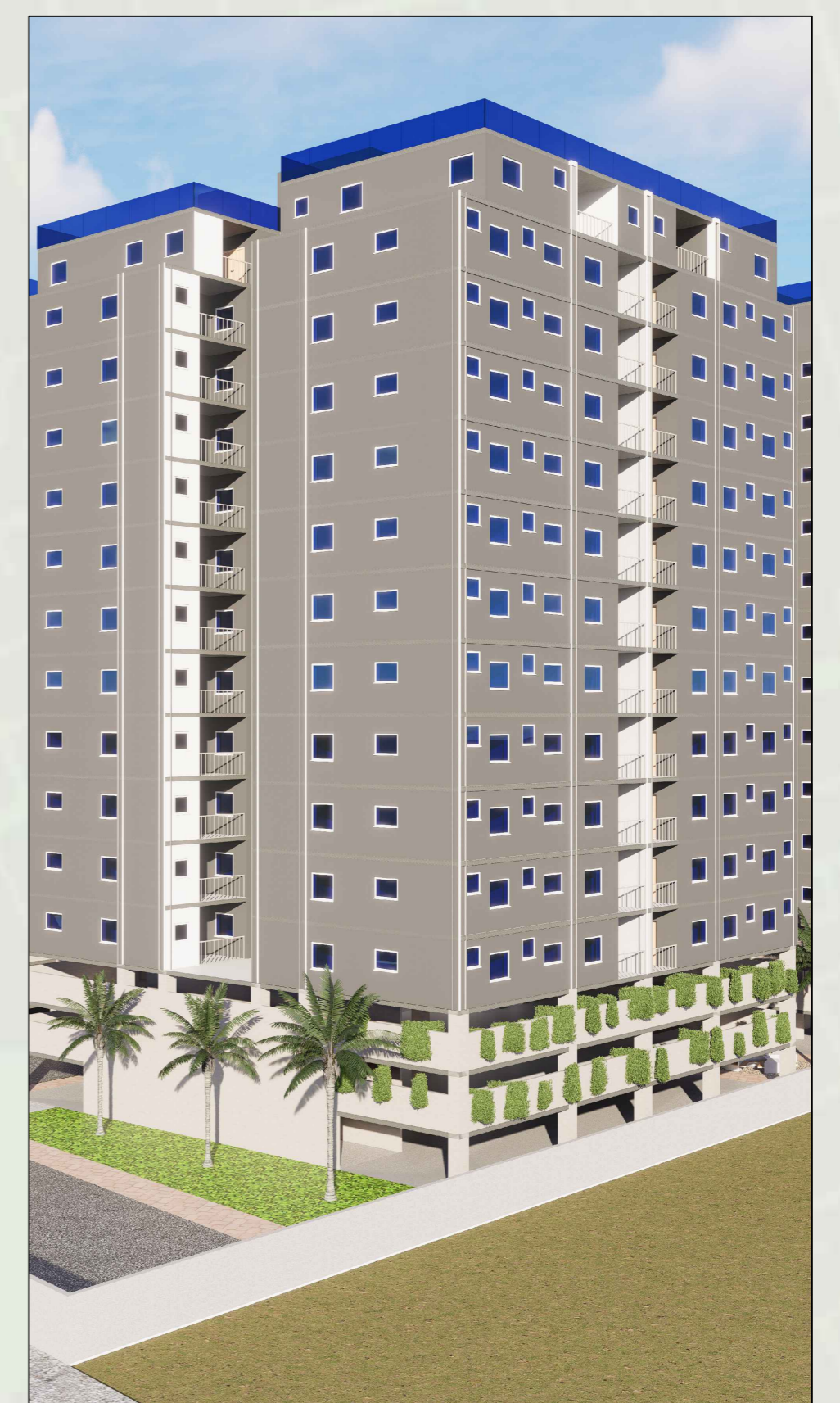


TYPICAL STILT FLOOR PLAN



SECTION AA'

SECTION BB'



3D VIEW

03

LUNARIA HEIGHTS
HIGH RISED APARTMENTS, NOLAMBUR

FACULTY SIGN

J.S.ESHA NANDHINI
211011101010

SUGANTHRAAGAV N
211011101033

B.ARCH IVth YR, VIIth SEM
BATCH: 2021-2026