

SKICÁŘ ATA3

Camison
HOTEL

KONCEPT



Gamson
HOTEL

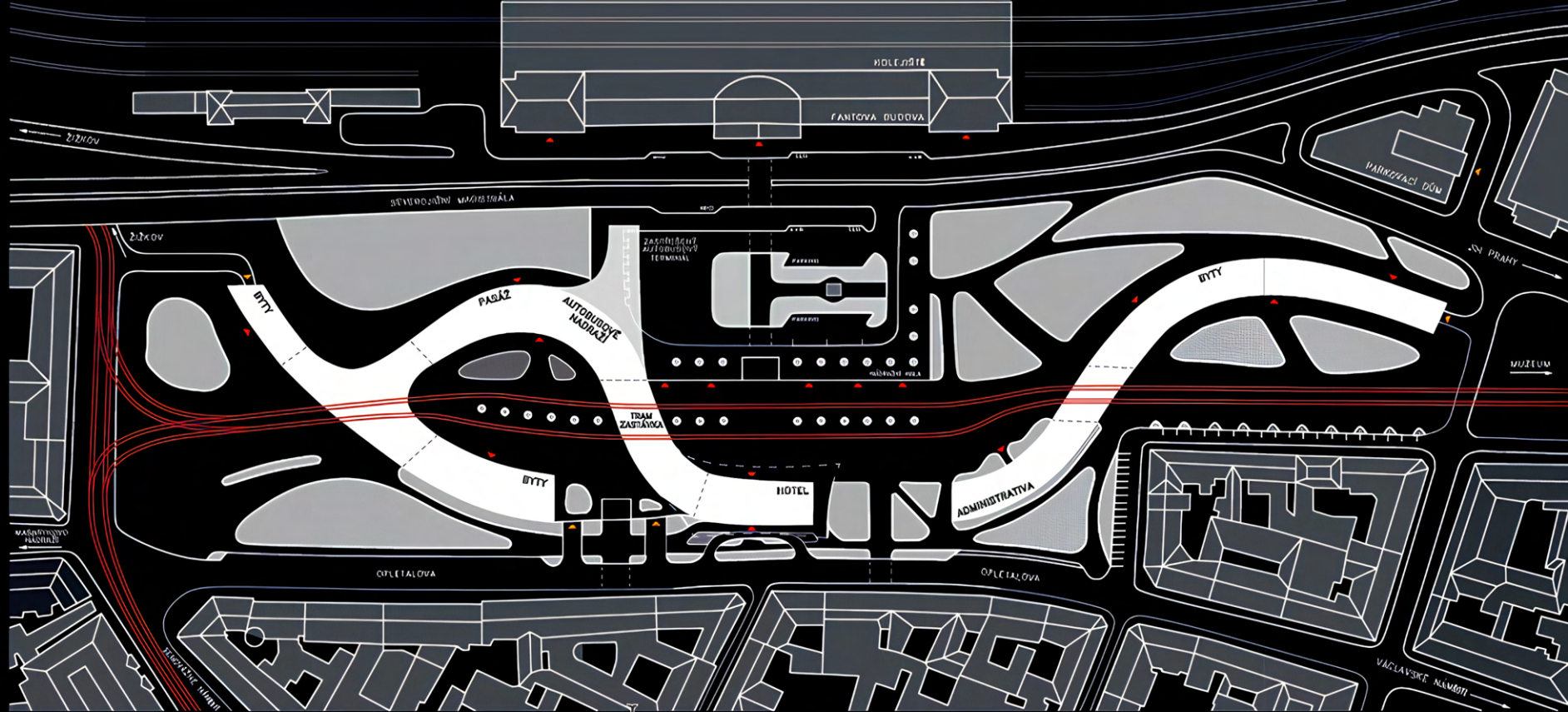
NÁVRH LOGA PRO
HOTEL



PRAHA



HLAVNÍ NÁDRAŽÍ



SITUACE 1:1750

▲ HLAVNÍ VCHOD

▲ VJEZD DO PODZEMNÍCH GARÁŽÍ

== TRAM. TRÁŤ



VIZUALIZACE





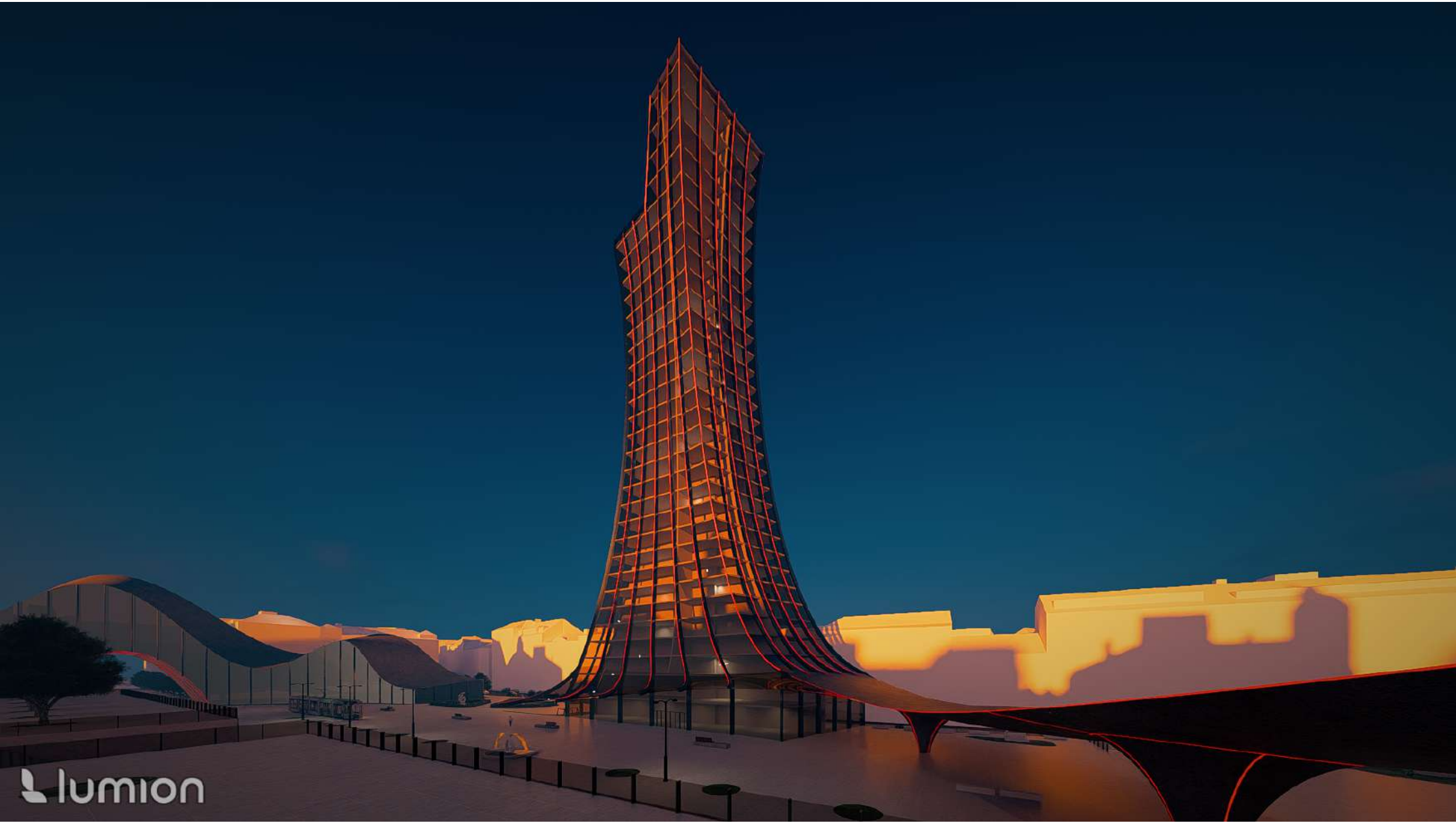





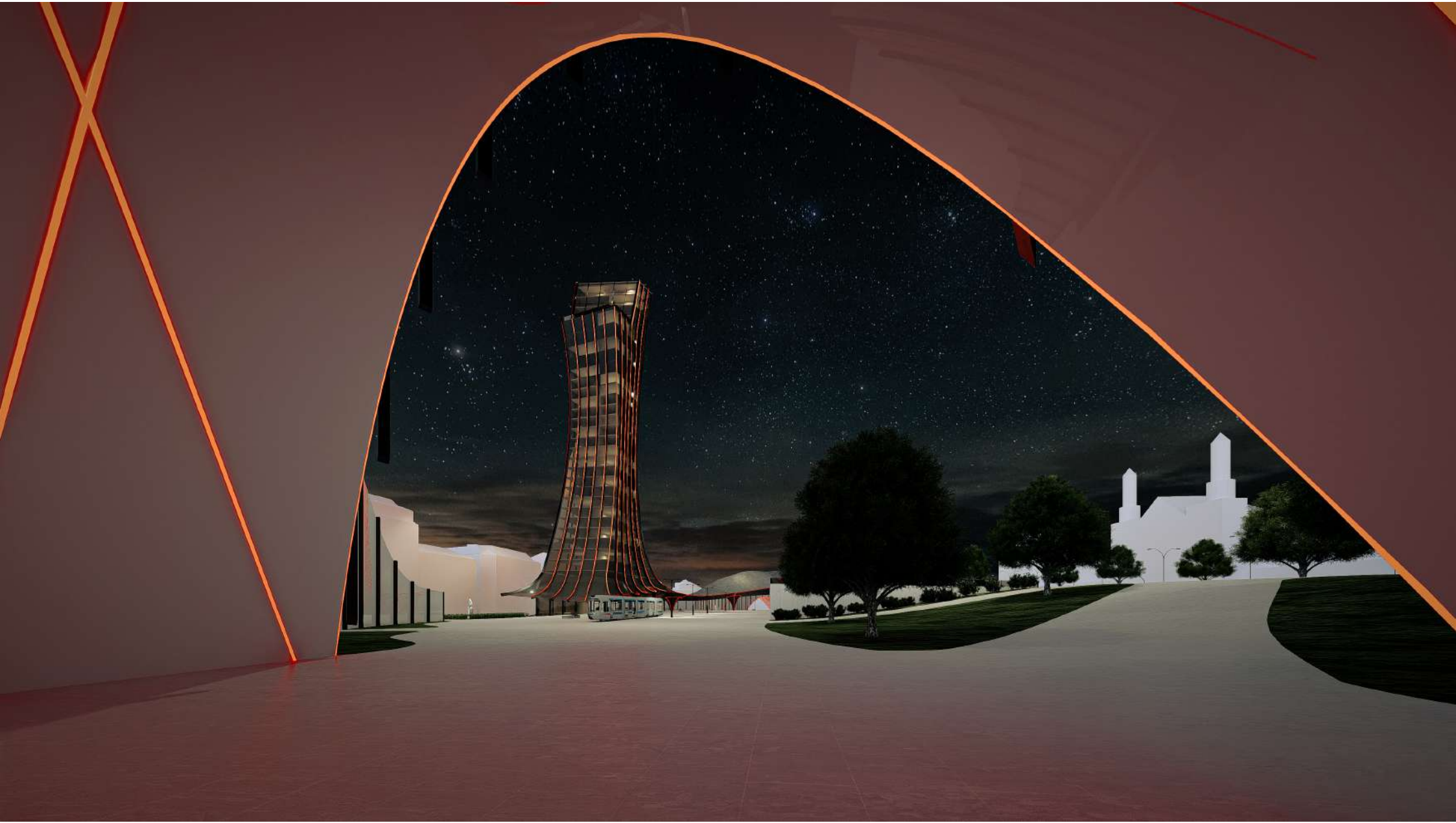


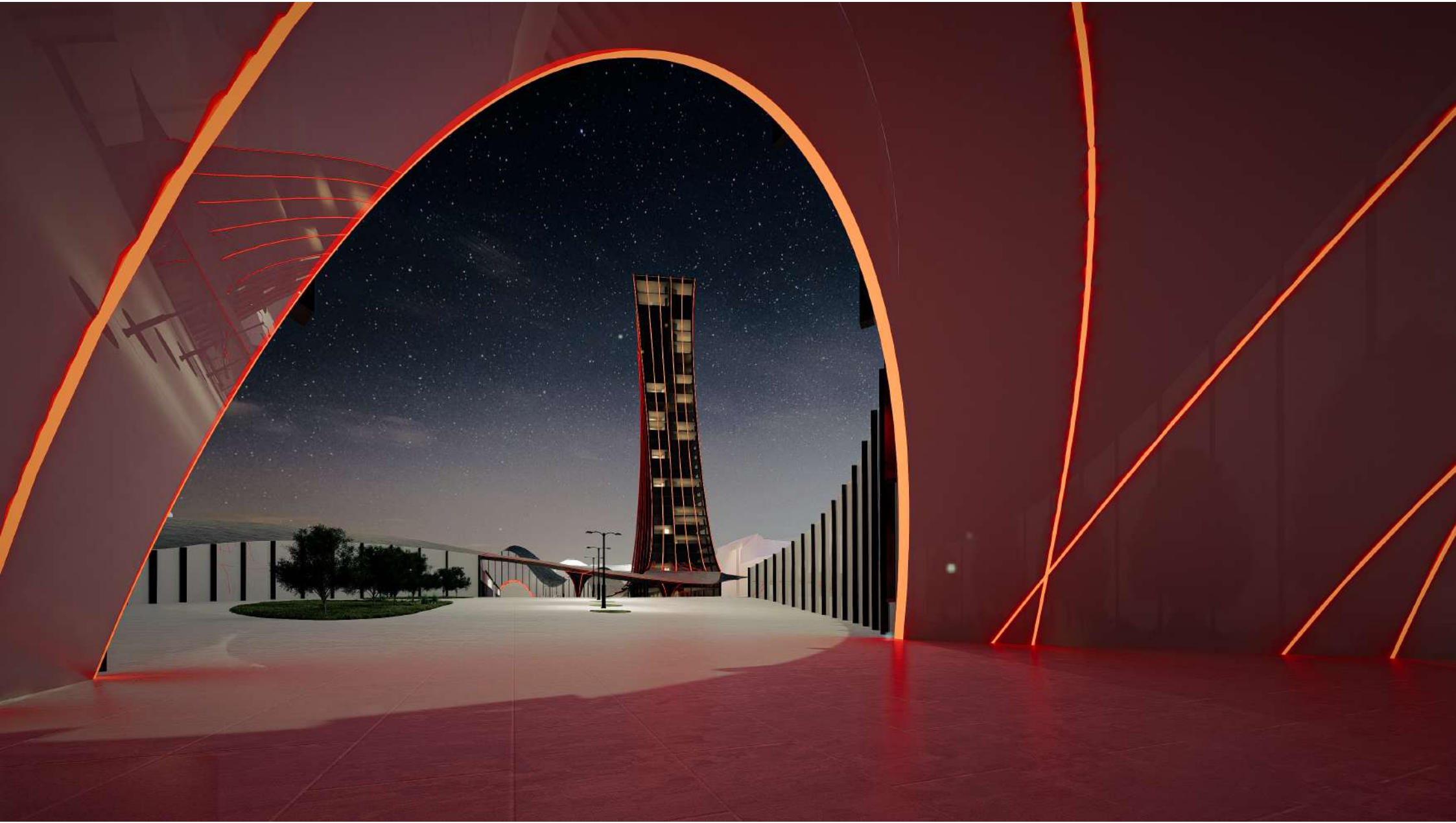






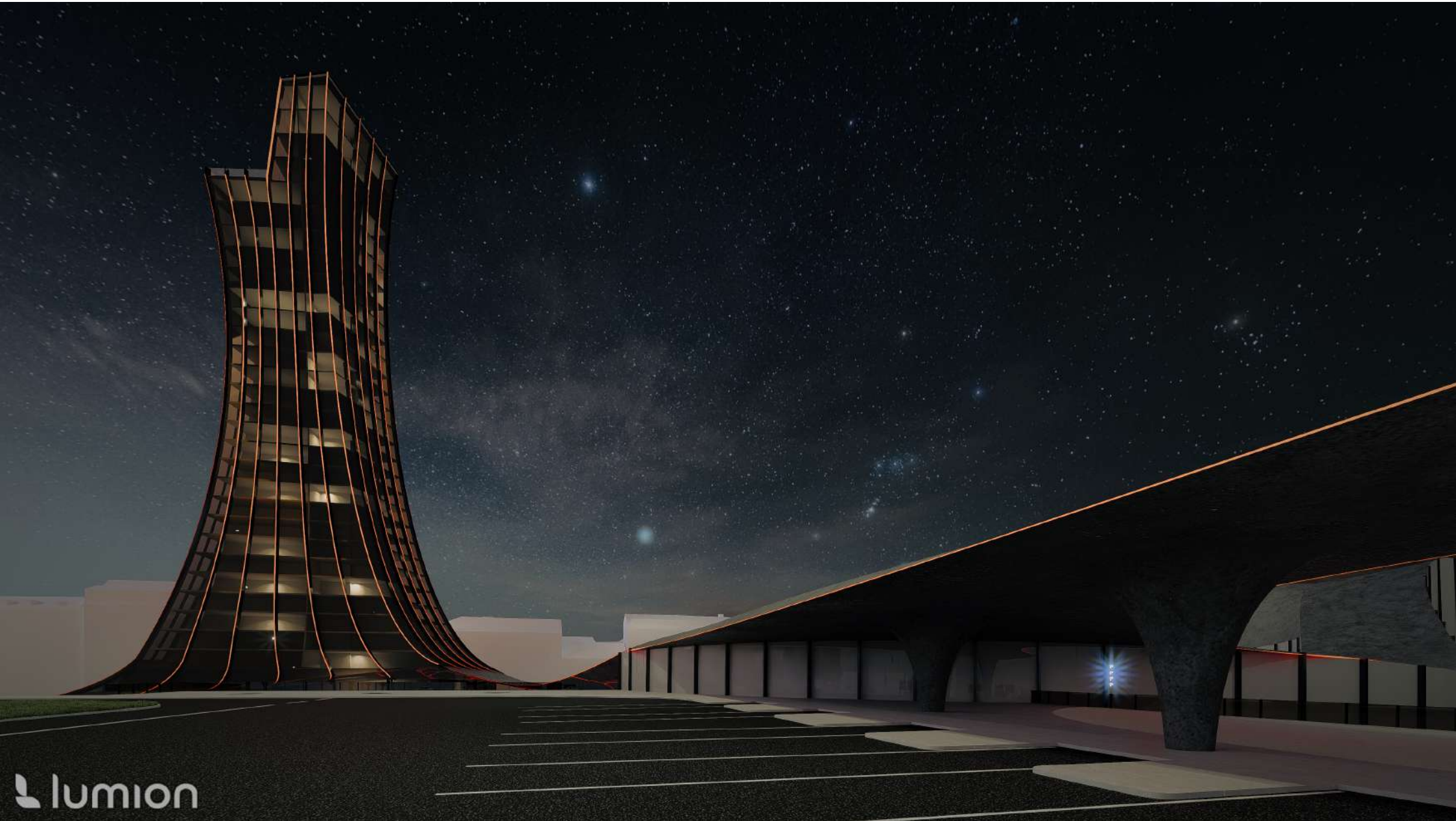
 lumion





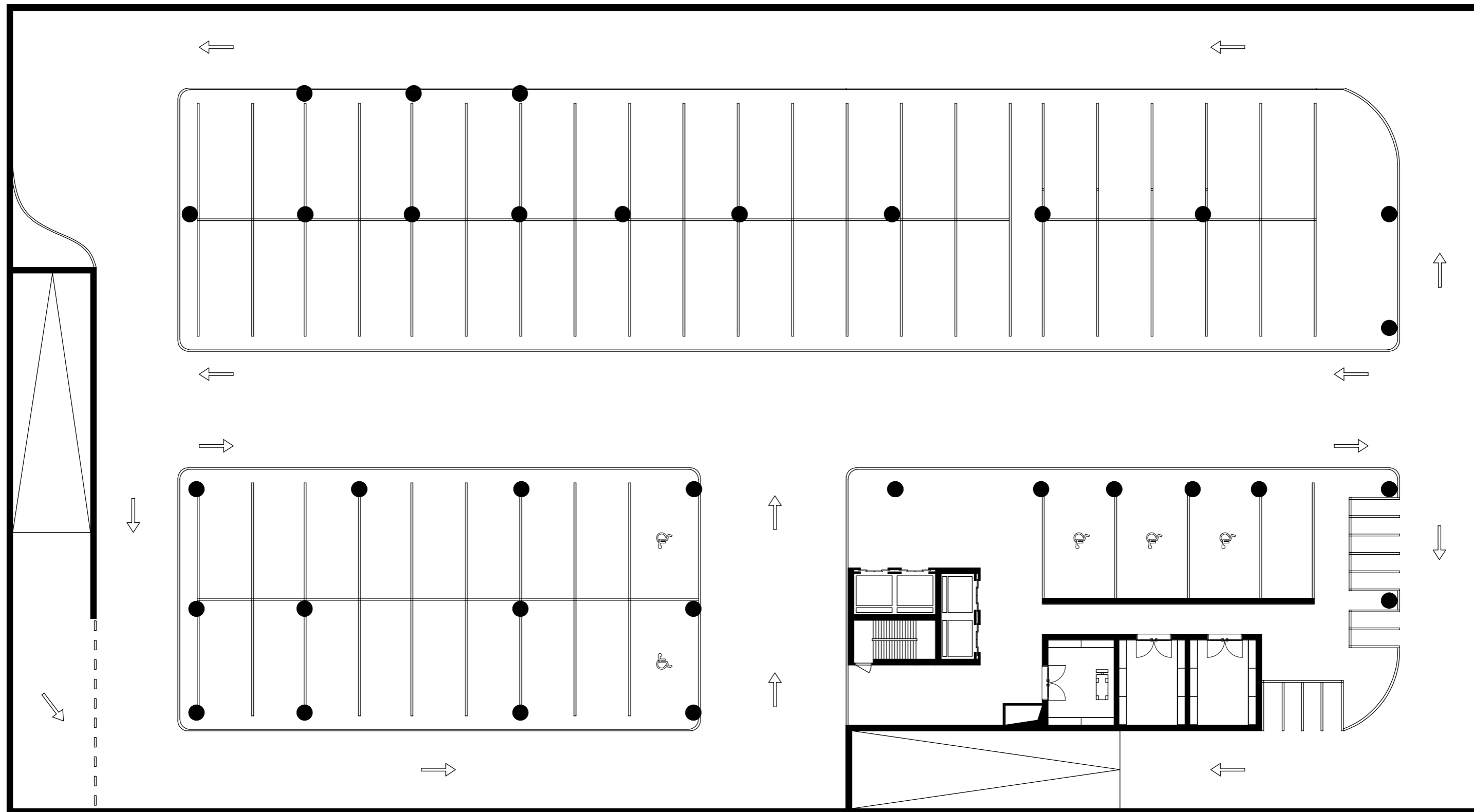


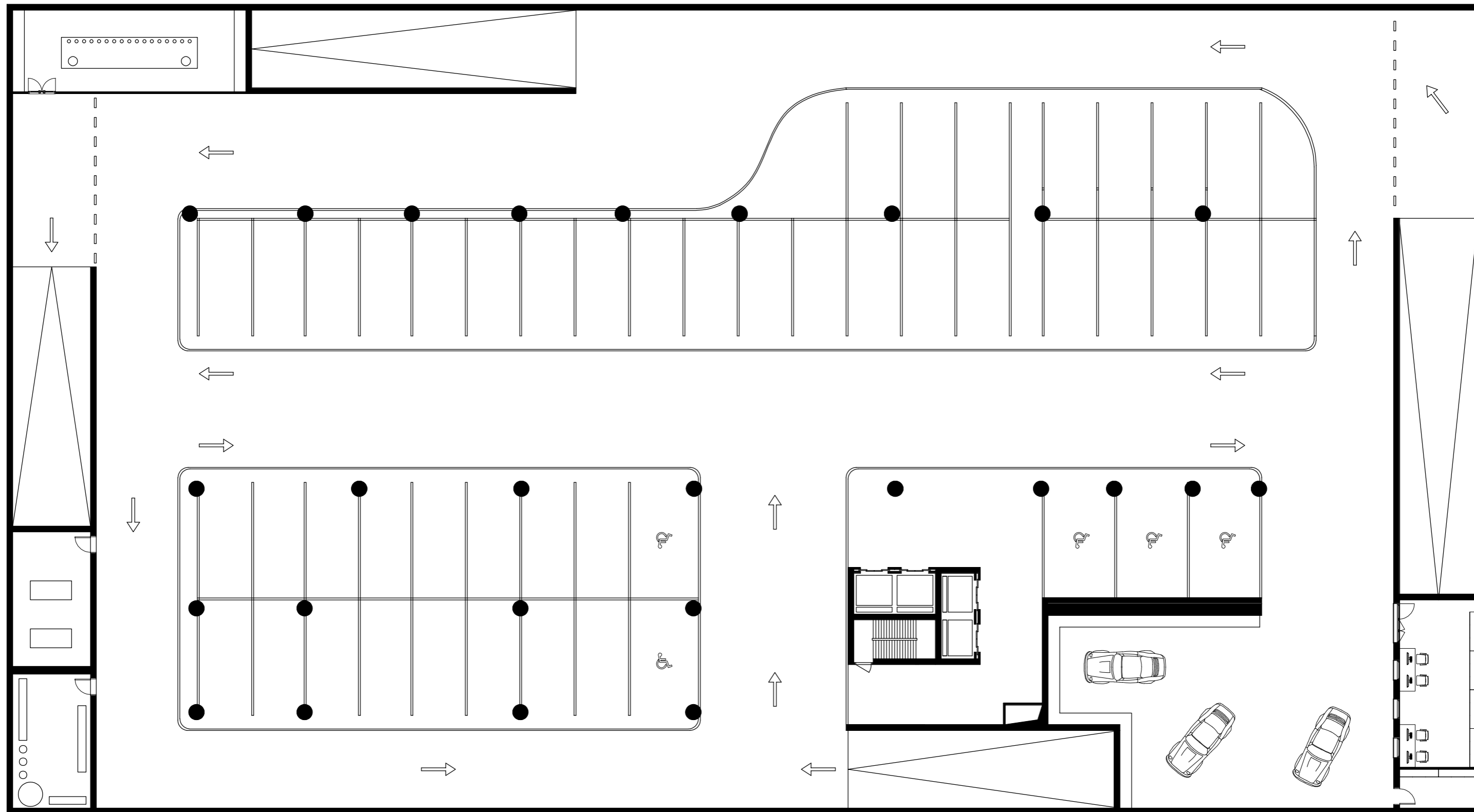
 lumion

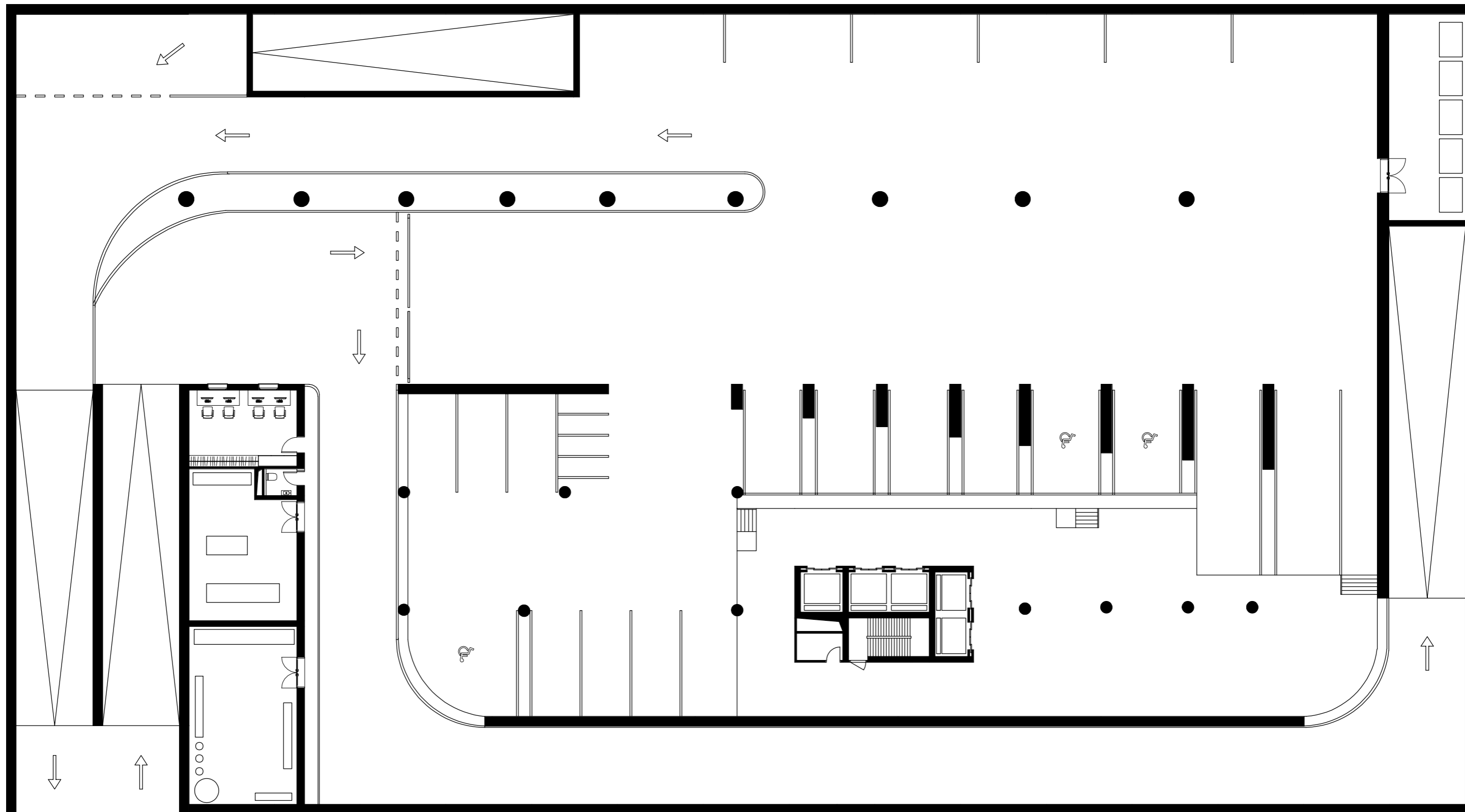


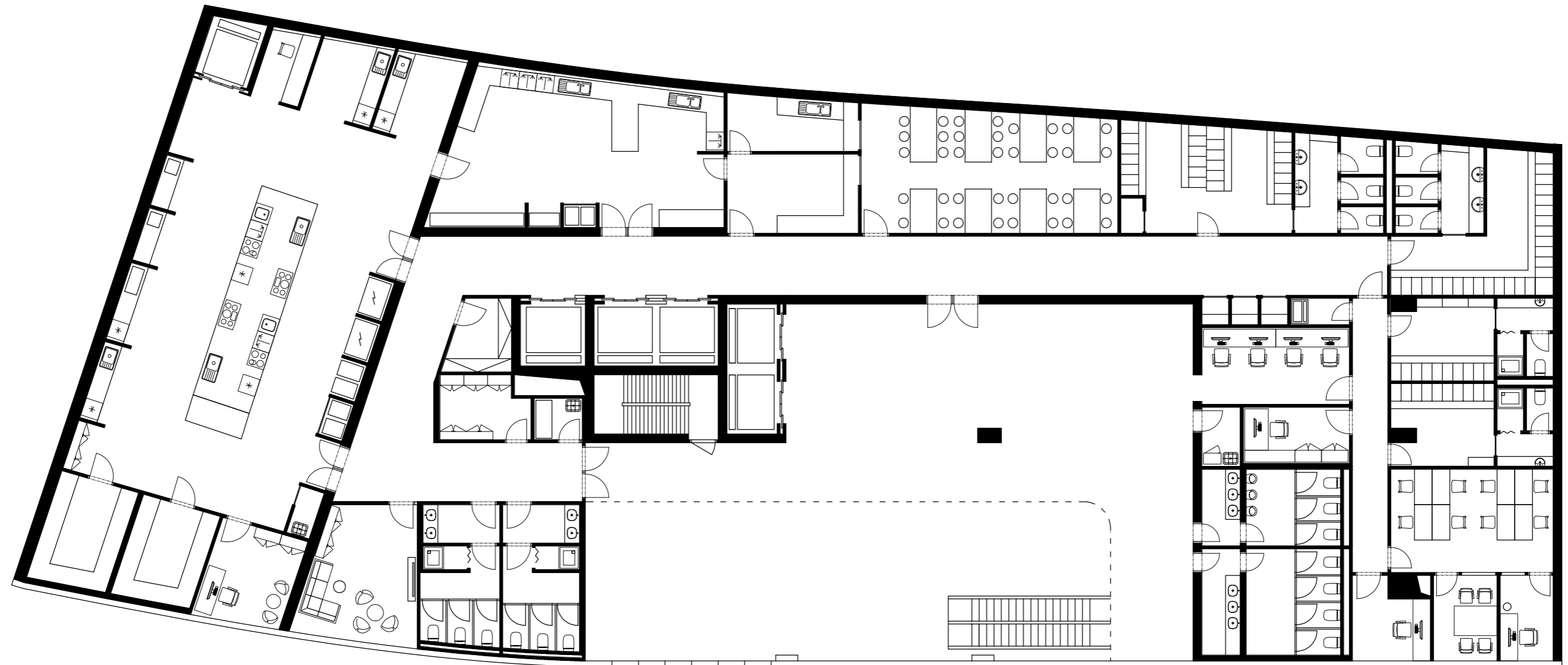


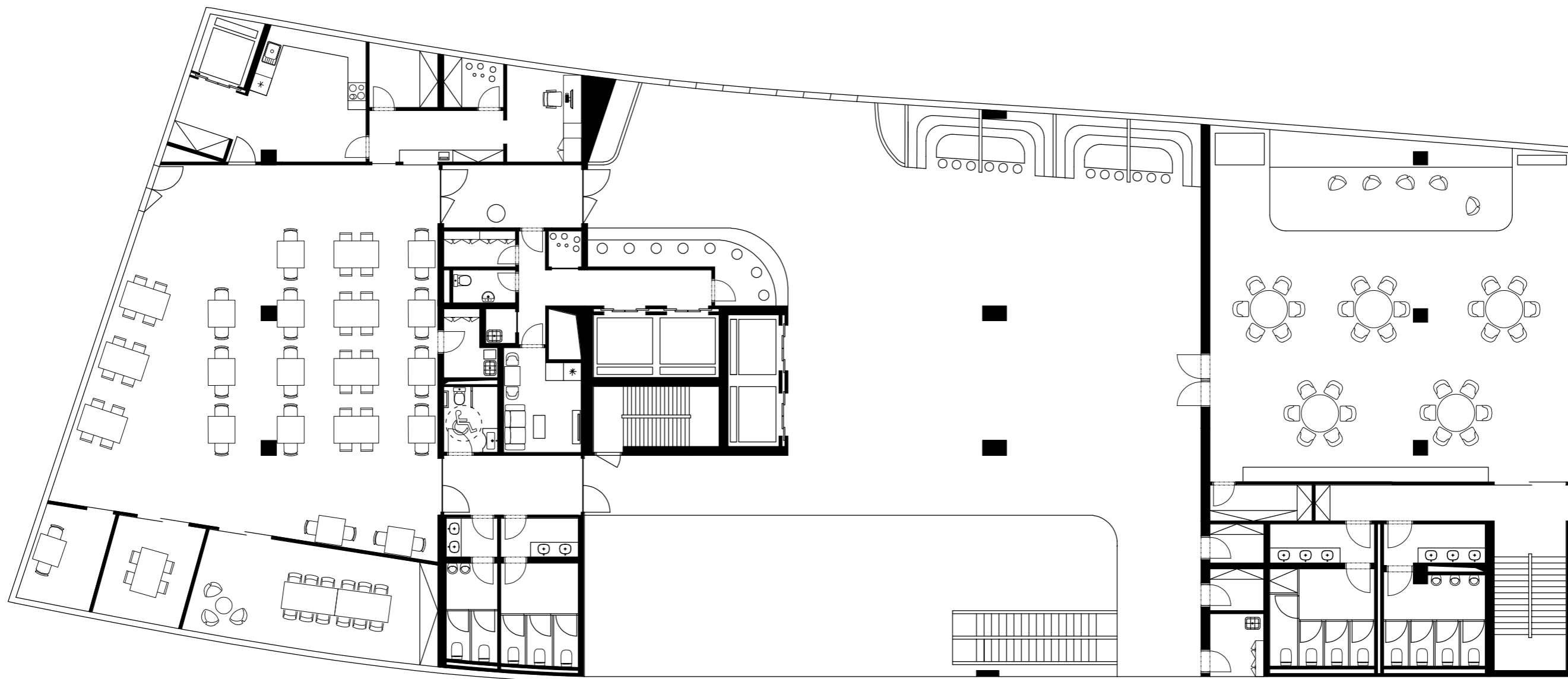
VÝKRESY

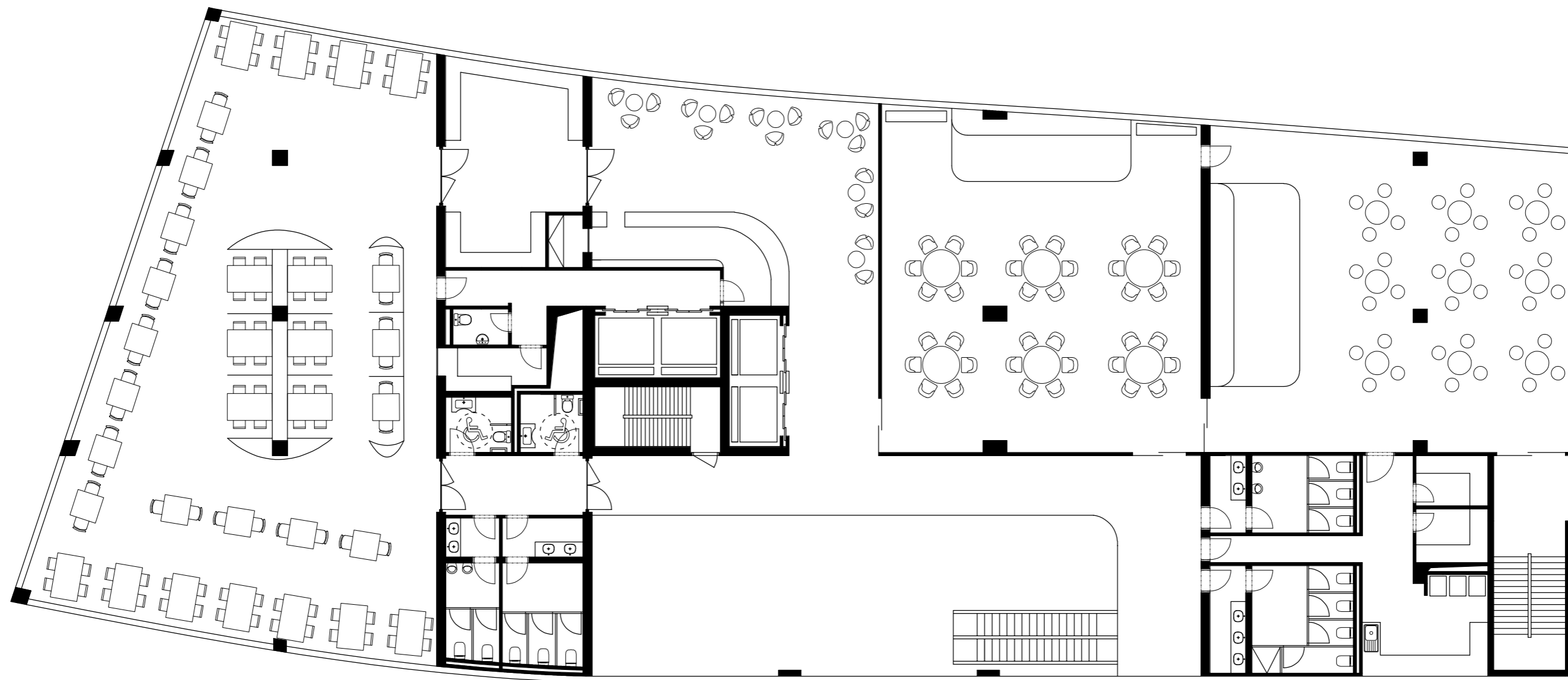




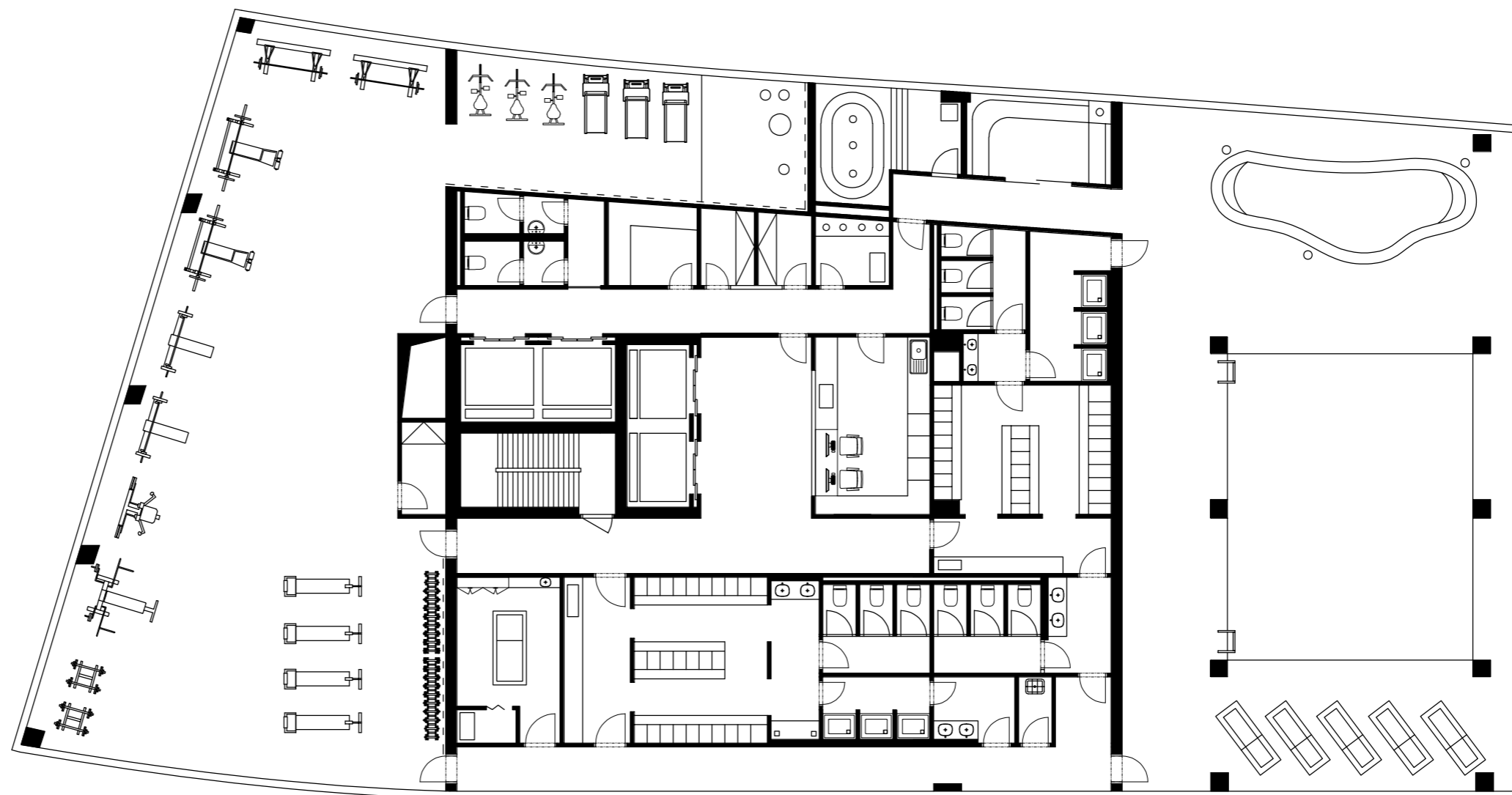






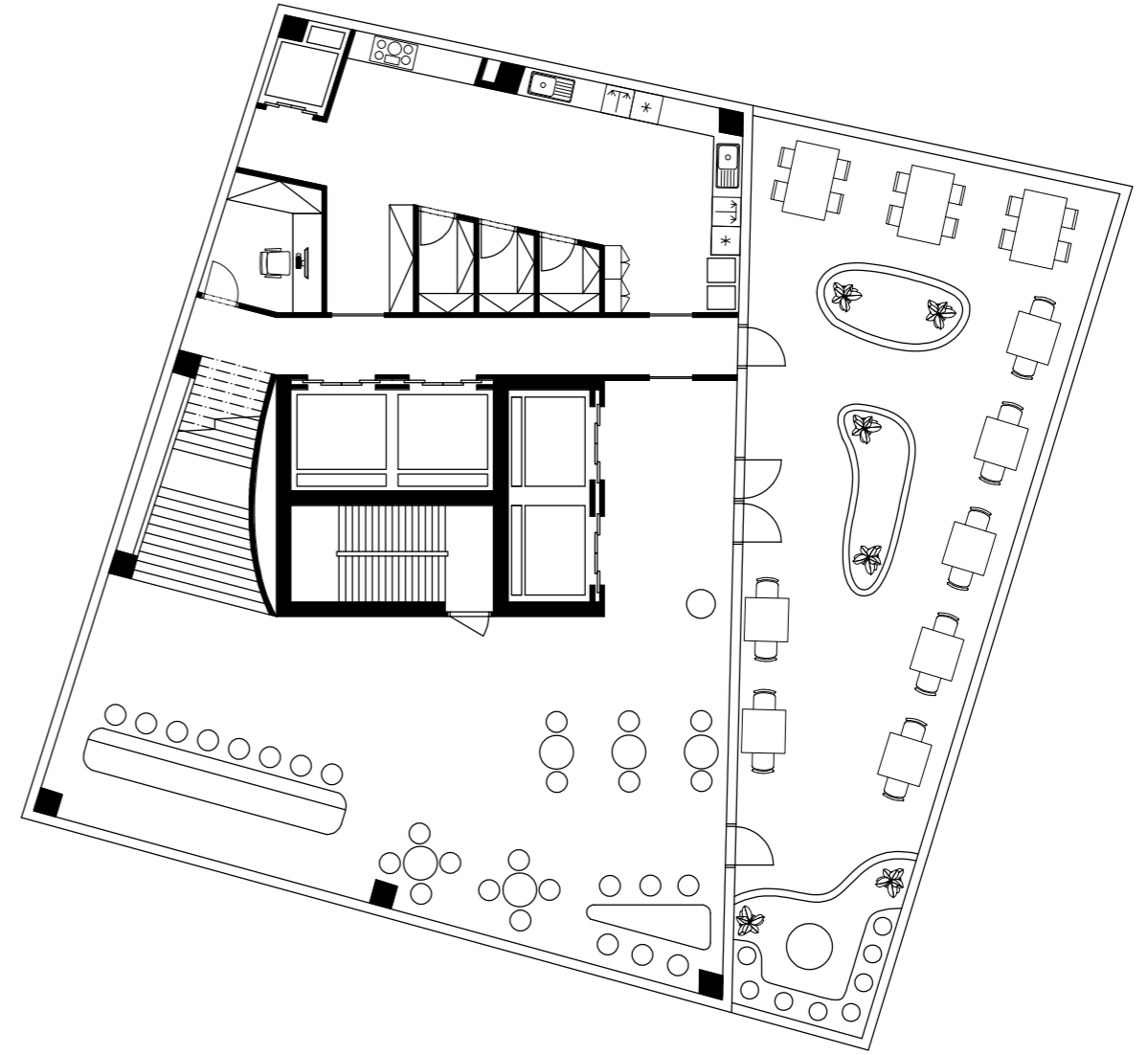


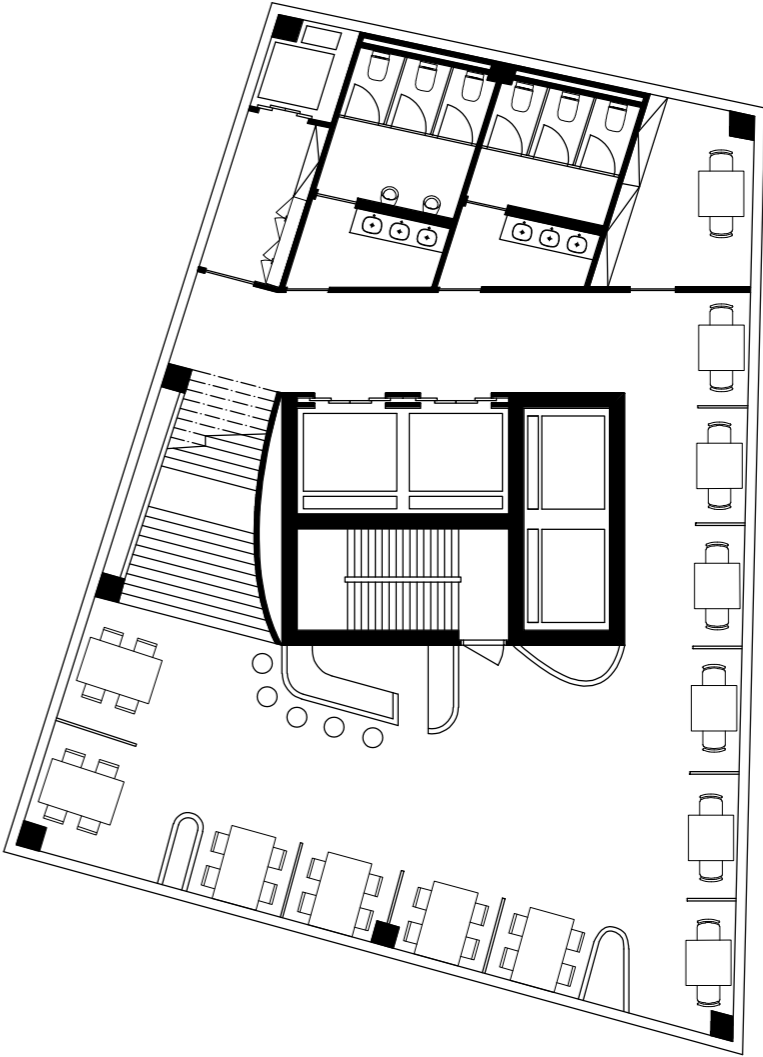


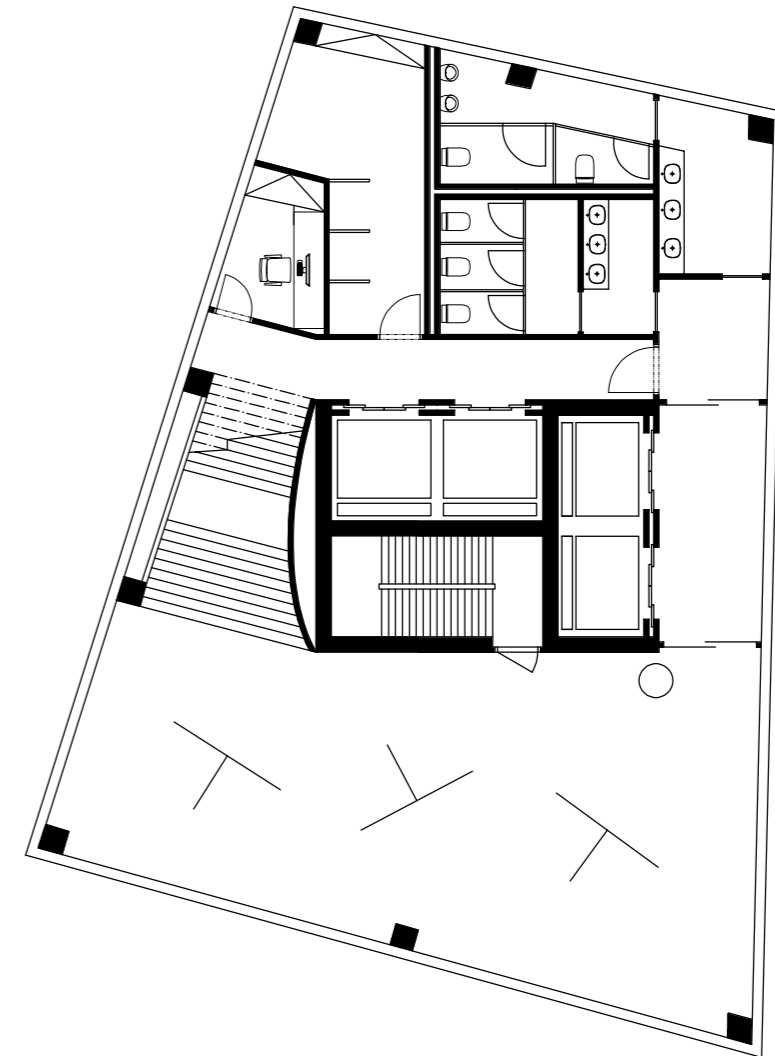


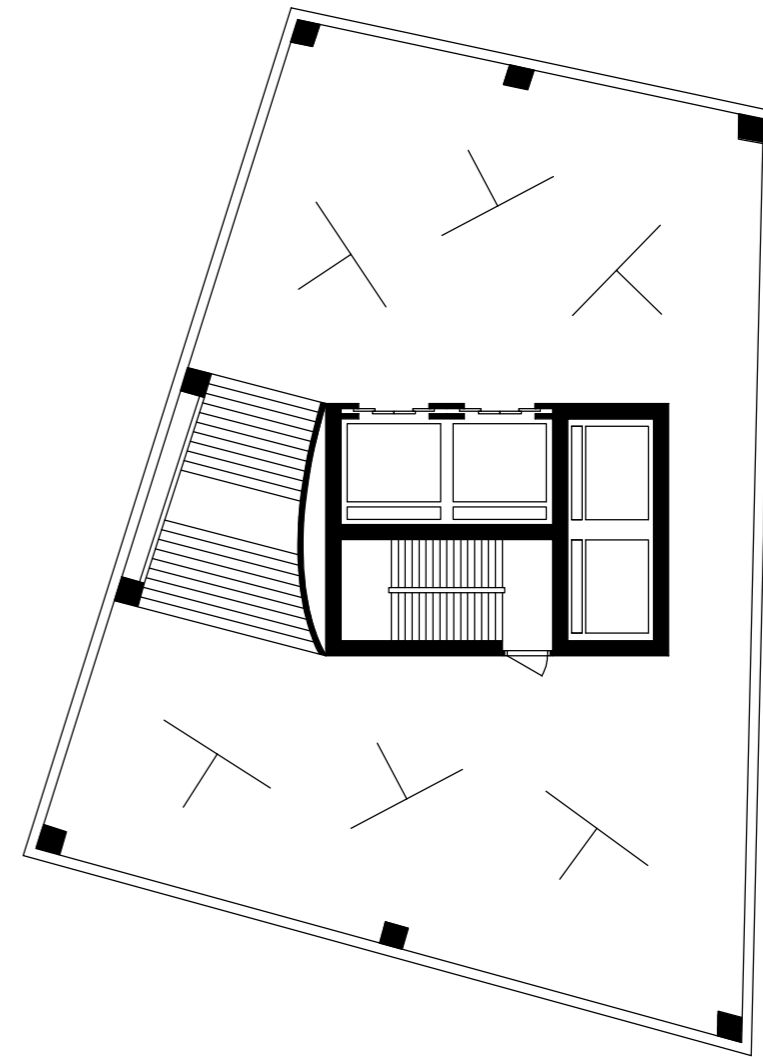


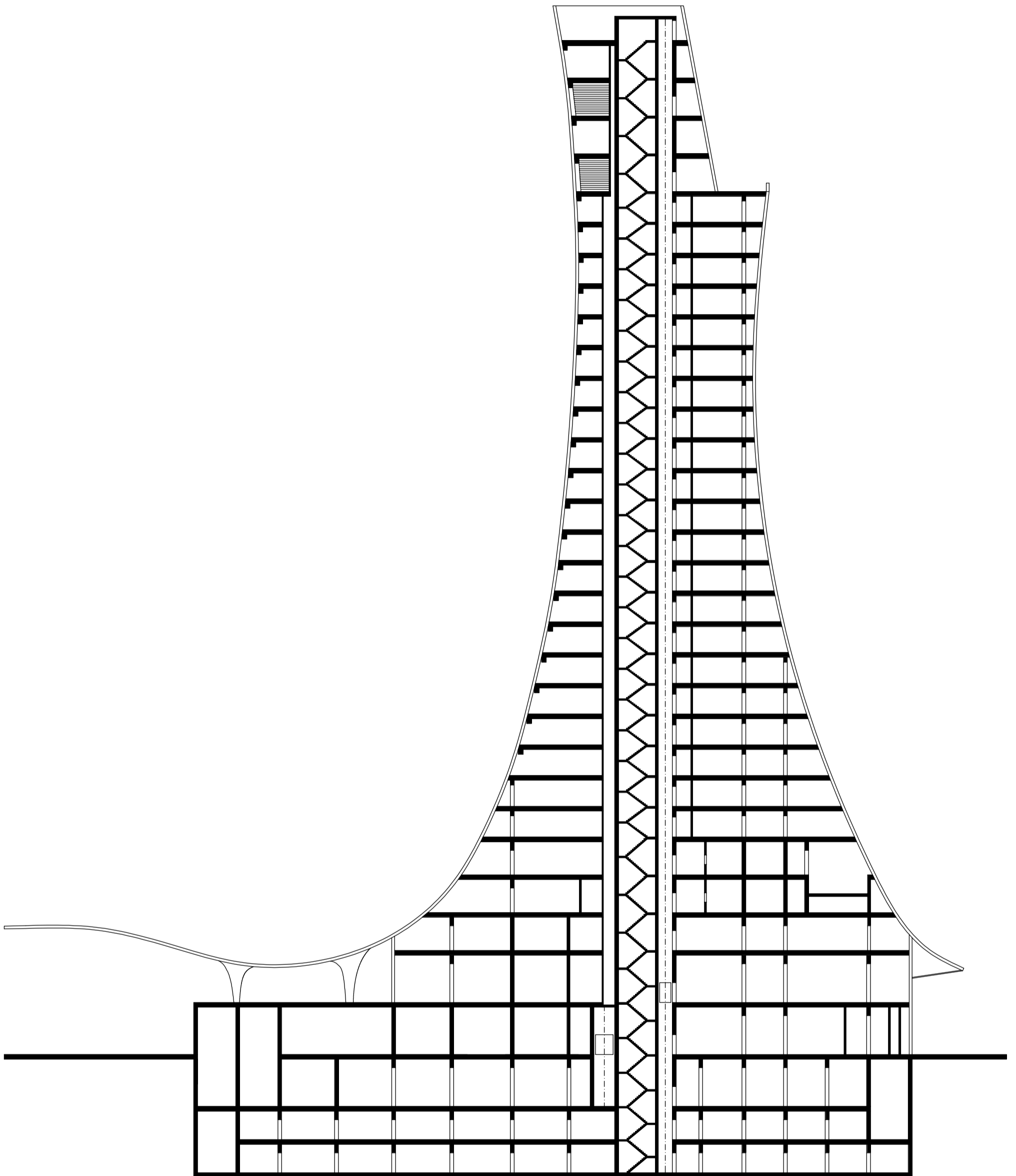








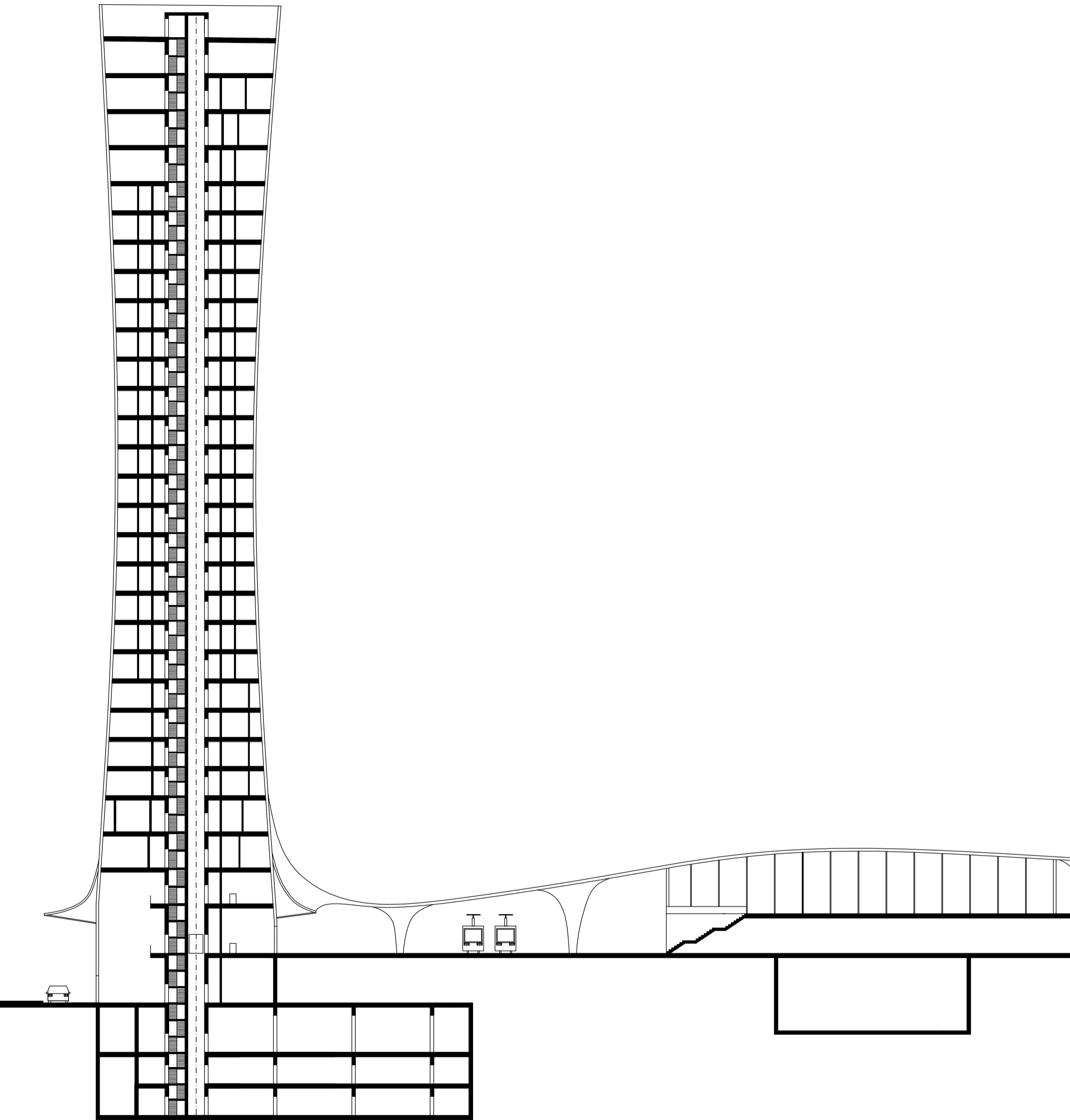




ŘEZ A-A'

1:400

Navrhnul: SAMUEL ČANDÍK	2023/24	FSV
GLEICH/TROJAN/DVOŘÁK	ATA3	ČVUT



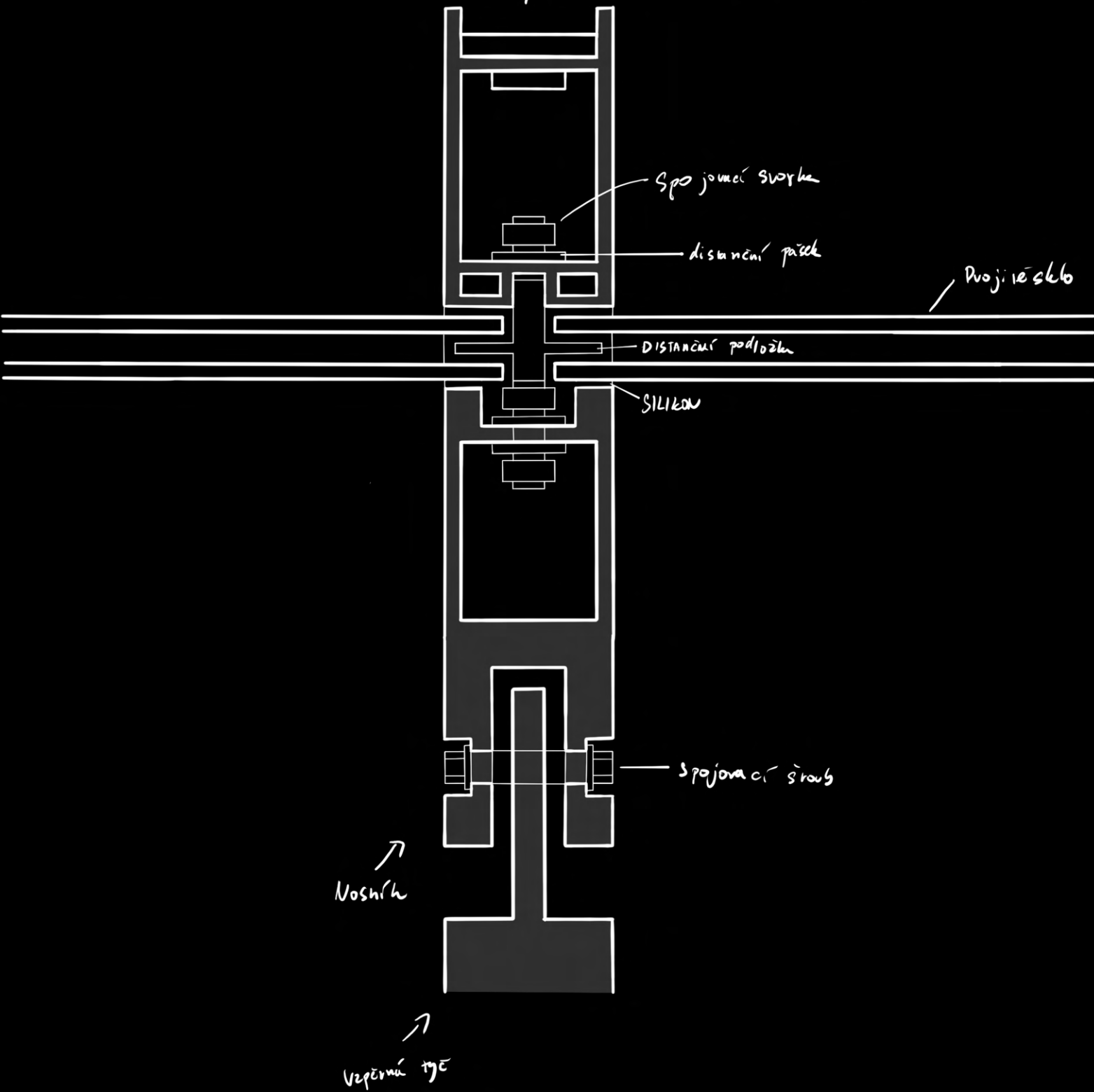
ŘEZ B-B'

1:400

Navrhnul: SAMUEL ČANDÍK	2023/24	FSV
GLEICH/TROJAN/DVOŘÁK	ATA3	ČVUT

Detail ocelového nosníku skleněné fasády

LED pásy po celé délce



Detail napojení skleněné fasády

trojitě velkoplošné sklo

skleněná předstěna z dvojitého skla (slouží jako druhá stěna)

o celou nosiče

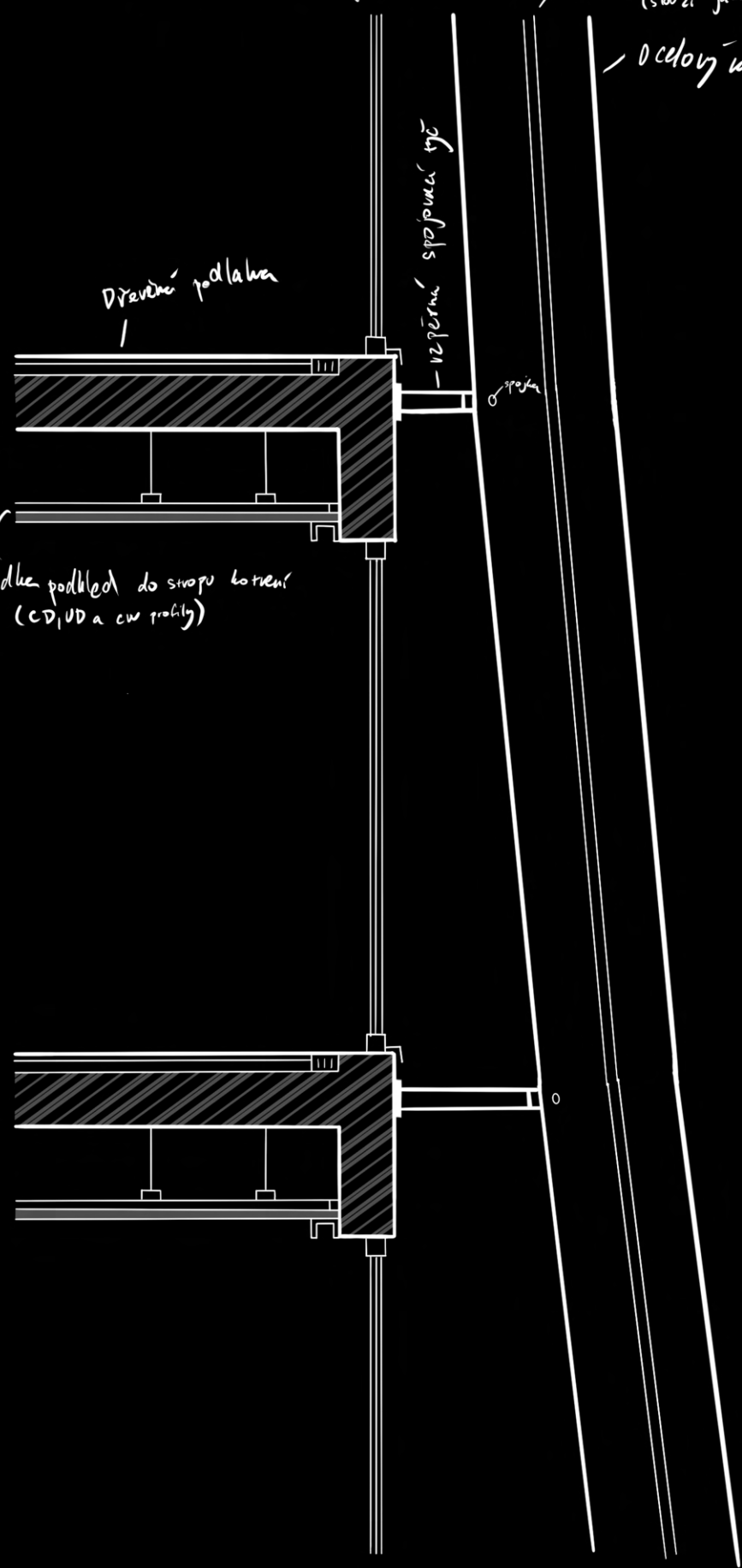
Dřevěná podlaha

— vzpěrná spojovací tyč

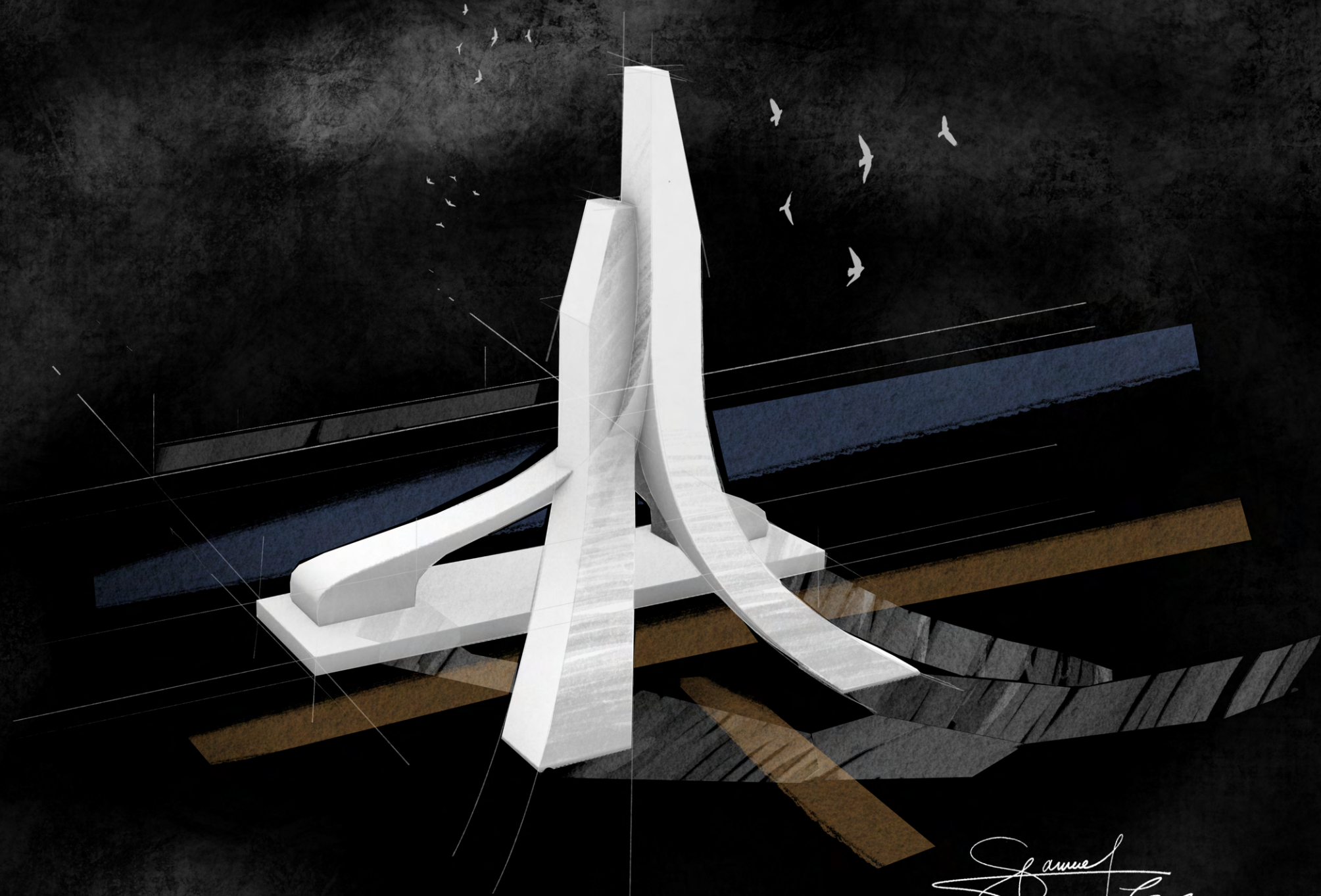
spojka

místo pro technologie

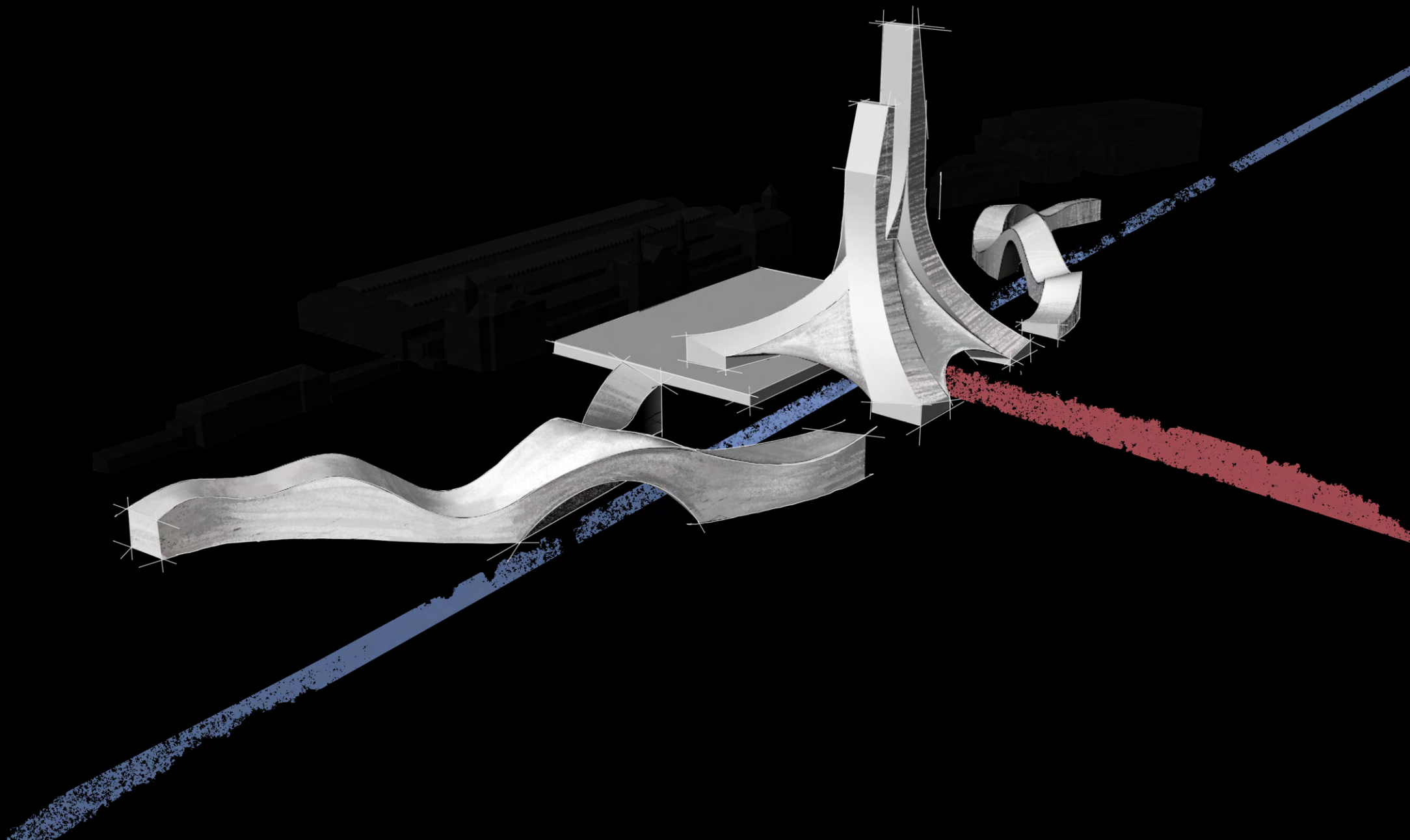
Sálava podhled do svislého kotvení (CD, UD a CW profily)

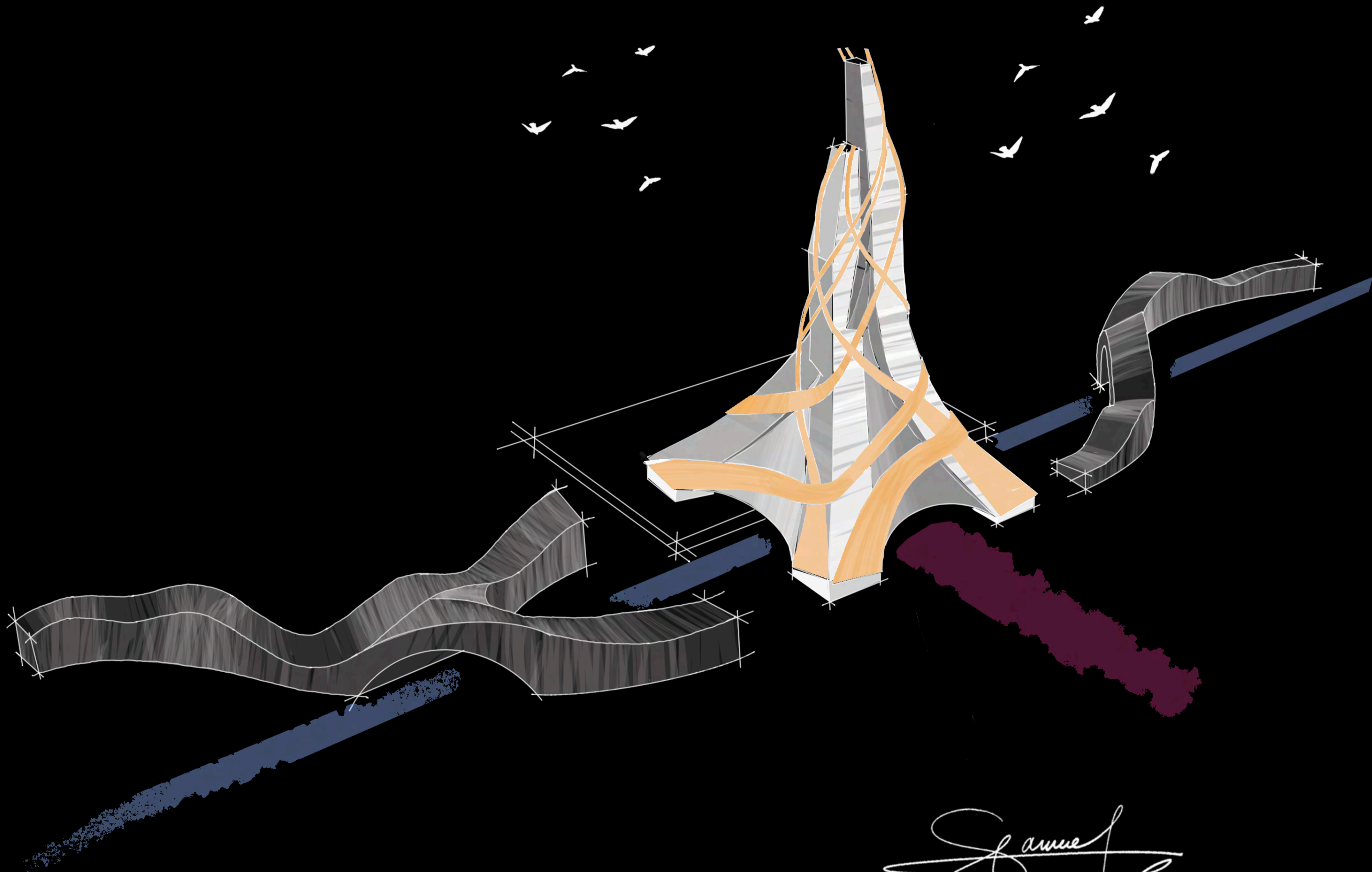


VÝVOJ



Samuel Lee





Samuel



LUMION