

Introduction :



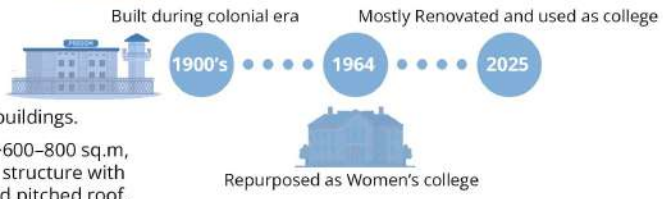
Bharathi Women's College (Heritage Block)
Prakasam Salai 1, Broadway Rd, near Stanley Hospital, George Town, Chennai, Tamil Nadu 600108

13.0931° N, 80.2884° E.

Campus: ~8 acres, multiple buildings.
Block Selected: ~600-800 sq.m, red-brick colonial structure with verandah and pitched roof.

Near Stanley Hospital, Parry's Corner, Royapuram Station, Mannadi Metro.

Timeline :



Project :
Adaptive reuse of an **abandoned colonial-era block** (~600-800 sq.m) within Bharathi Women's College, George Town, Chennai.

Analysis :

Structural



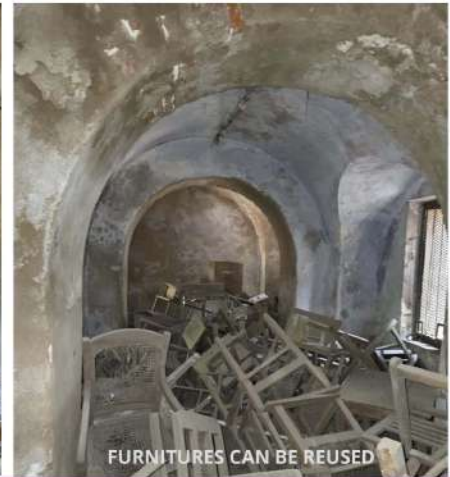
Wooden roof trusses with Mangalore tiles / Madras terrace.
Verandahs supported by stone/brick columns.
Load-bearing red-brick masonry walls.



Material



Site images :



Defects:
Cracks in plaster and walls (due to moisture).
Deteriorated timber roof. Broken flooring, vegetation growth.
Paint peeling, structural settlement in some sections.

Conservation Methods:
Re-plaster with lime mortar, not cement.
Treat and reuse timber trusses with **anti-termite + reinforcement.**
Madras terrace restoration with traditional methods.
Replace damaged tiles with matching heritage stock.

Contacts (Chennai):
INTACH Chennai Chapter – heritage conservation guidance.
CMDA Heritage Conservation Committee – approvals.
School of Architecture & Planning, Anna University – conservation research support.

<p>Need :</p> <p>Block lies unused, Campus heritage fabric is undervalued despite high cultural significance. Local area lacks inclusive, women-centric cultural/learning hubs.</p>	<p>Aim :</p> <p>To revive the historic block as a sustainable heritage & eco-learning center, linking education, empowerment, and environmental awareness.</p>	<p>OBJECTIVE</p> <p>Conserve heritage fabric. Reuse for learning. Reconnect the site to George Town's cultural identity.</p>
--	---	---

Methodology :



RED-BRICK MASONRY WALLS.

CRACKS IN PLASTER AND WALLS

ABANDONED CONDITION

FURNITURES CAN BE REUSED

BOOK HOARD
- A COMPLETE WOMEN CENTRIC EDUCATIONAL AND WORK ZONE

PROPOSAL - DESIGN PHILOSOPHY
"WOMEN CENTRIC BOOK HOARD"

HOARD MEANING - VALUE OF OBJECTS

SYNONYMS - LIBRARY

ADAPTIVE REUSE - retaining the loadbearing brick shell, arches, and verandahs as "memory walls."

LIGHT & OPENNESS - inserting skylights and courtyards to reverse the dark, confining character.

INCLUSIVITY - ensuring barrier-free access (ramps, tactile flooring) so the library is open to all students and the community.

SUSTAINABILITY - passive cooling via cross-ventilation and lime plaster restoration, energy-efficient lighting, reuse of old timber.

SYMBOLISM - the act of reading and learning inside an old prison space becomes a metaphor for liberation.



PROPOSED MOOD BOARD



ELEMENTS

Verandahs retained as reading galleries.
Arches framed as entry points to study zones.
Central yard reactivated as reading court with pergolas.



REFERENCE

Design palette is derived from the existing heritage fabric. Materials such as exposed Madras brick, lime plaster, timber trusses are restored to maintain authenticity.

shutters and façades found across the George Town heritage precinct.

arches are inspired by Indo-Saracenic

CONSTRUCTION TECHNIQUES

Traditional lime plaster, brick bond restoration.
Reversible steel-and-glass infill for partitions.
Locally crafted wooden louvers for ventilation.

CONCEPTUAL DESIGN



SCHEMATIC SKETCHES



BUILDING CONDITION



Utilized zone (green) Non - Utilized zone (red)

The **Ground floor** of the building is been used as **Storage** area of all those **unused furnitures**

The **First floor** of the building is been **under utilized** because of the **demolished condition** of the staircase,

the staircase is been **left out** considering the **safety** for the students

DESIGN PALETTE:

MATERIALS

EXISTING: Red Madras brick masonry, lime mortar, timber rafters, arched doorways.

WALLS: exposed brick with lime wash (earthy tones).

FLOORS: patterned cement tiles referencing colonial flooring.

CEILING: restored timber trusses with steel reinforcement hidden.



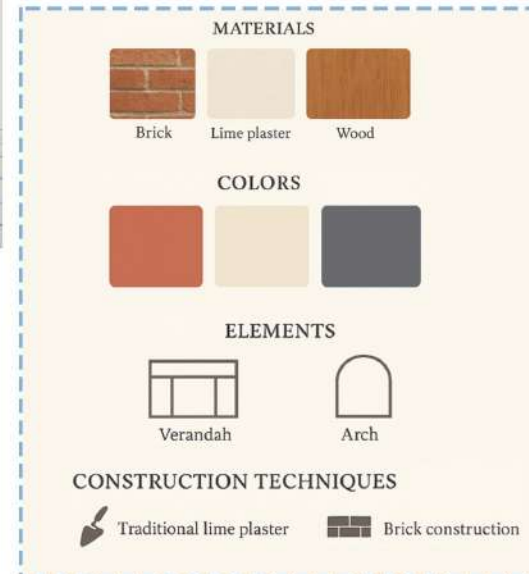
COLOURS

EXISTING HERITAGE HUES: Terracotta red, faded lime-white, teak brown.

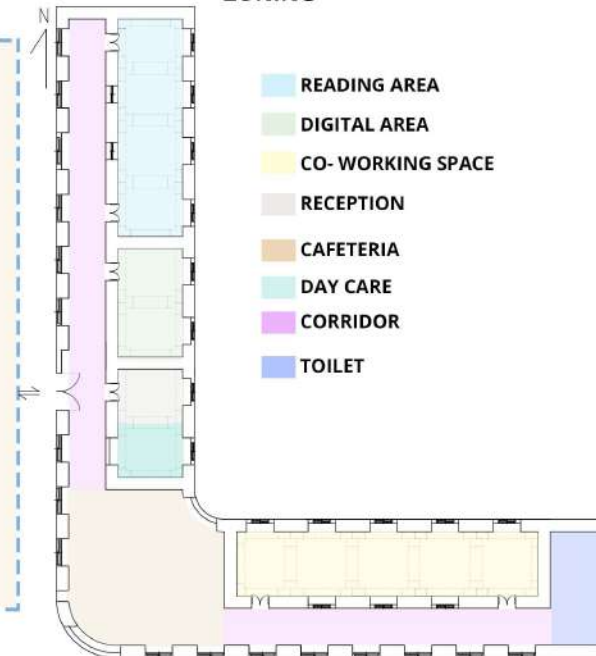
PROPOSED EXTENSION: muted cream, Brick panel



MATERIAL BOARD



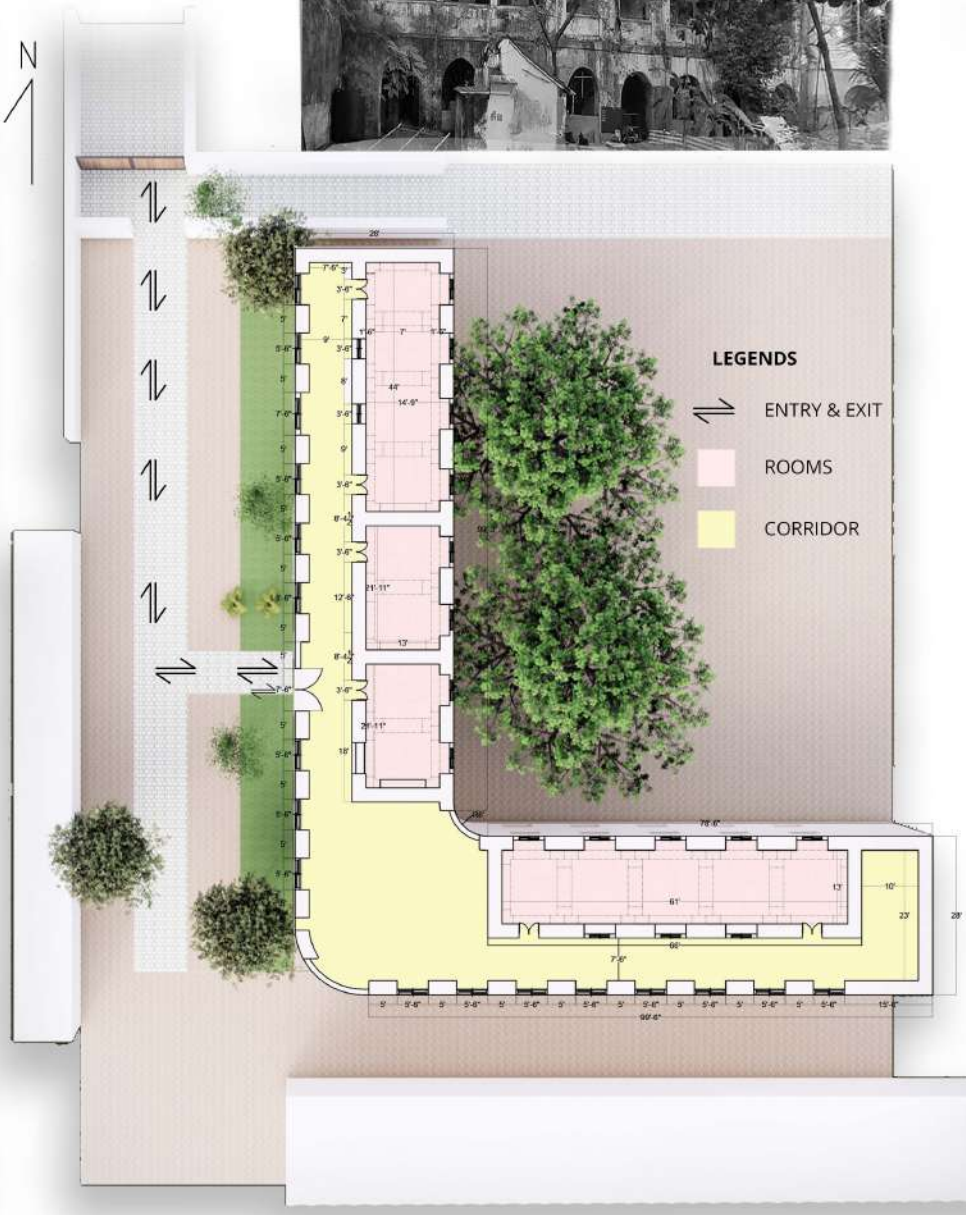
ZONING



ELEVATION



EXISTING SITE PLAN



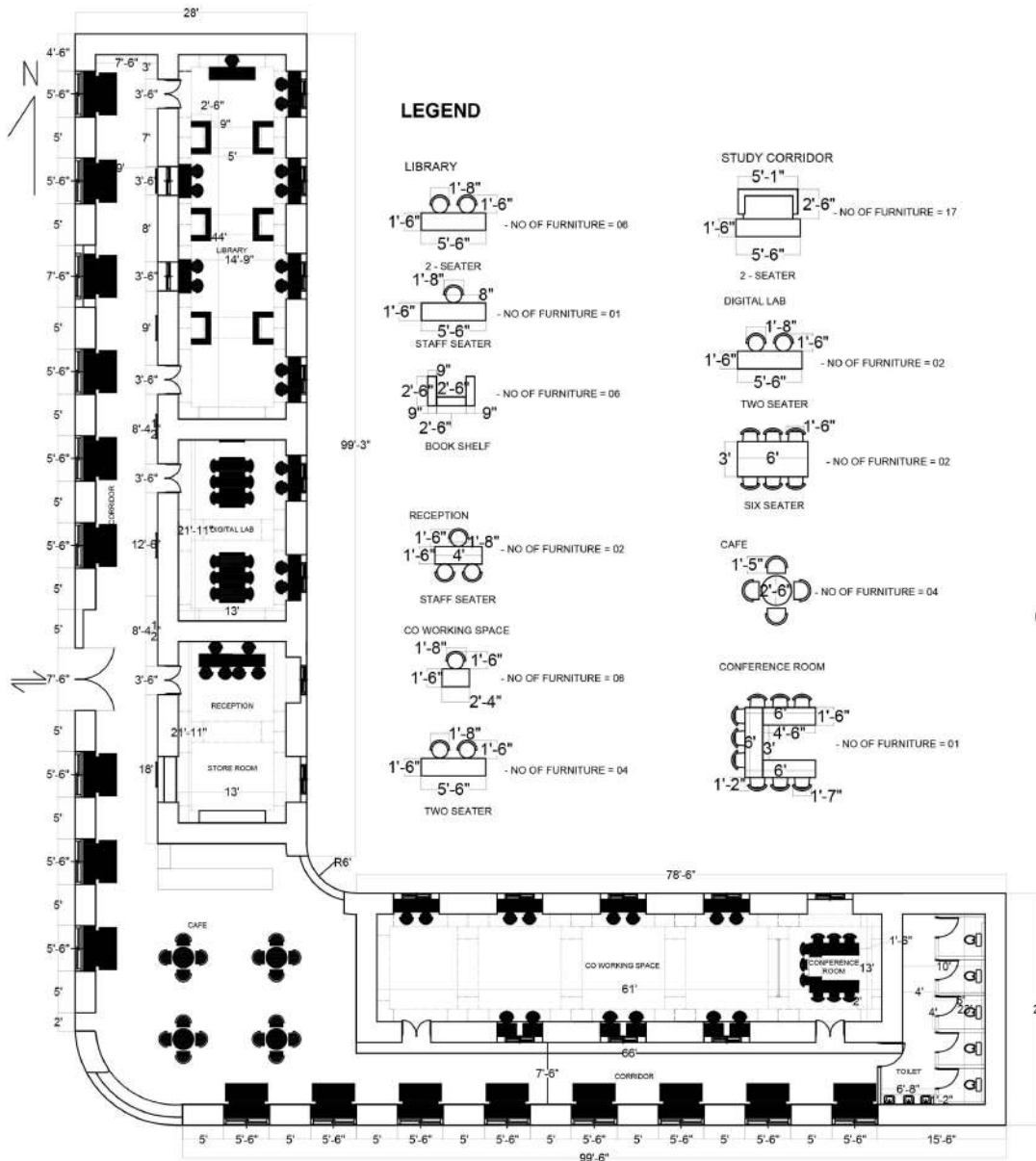
PROPOSED PLAN



ELEVATION



FURNITURE LAYOUT :



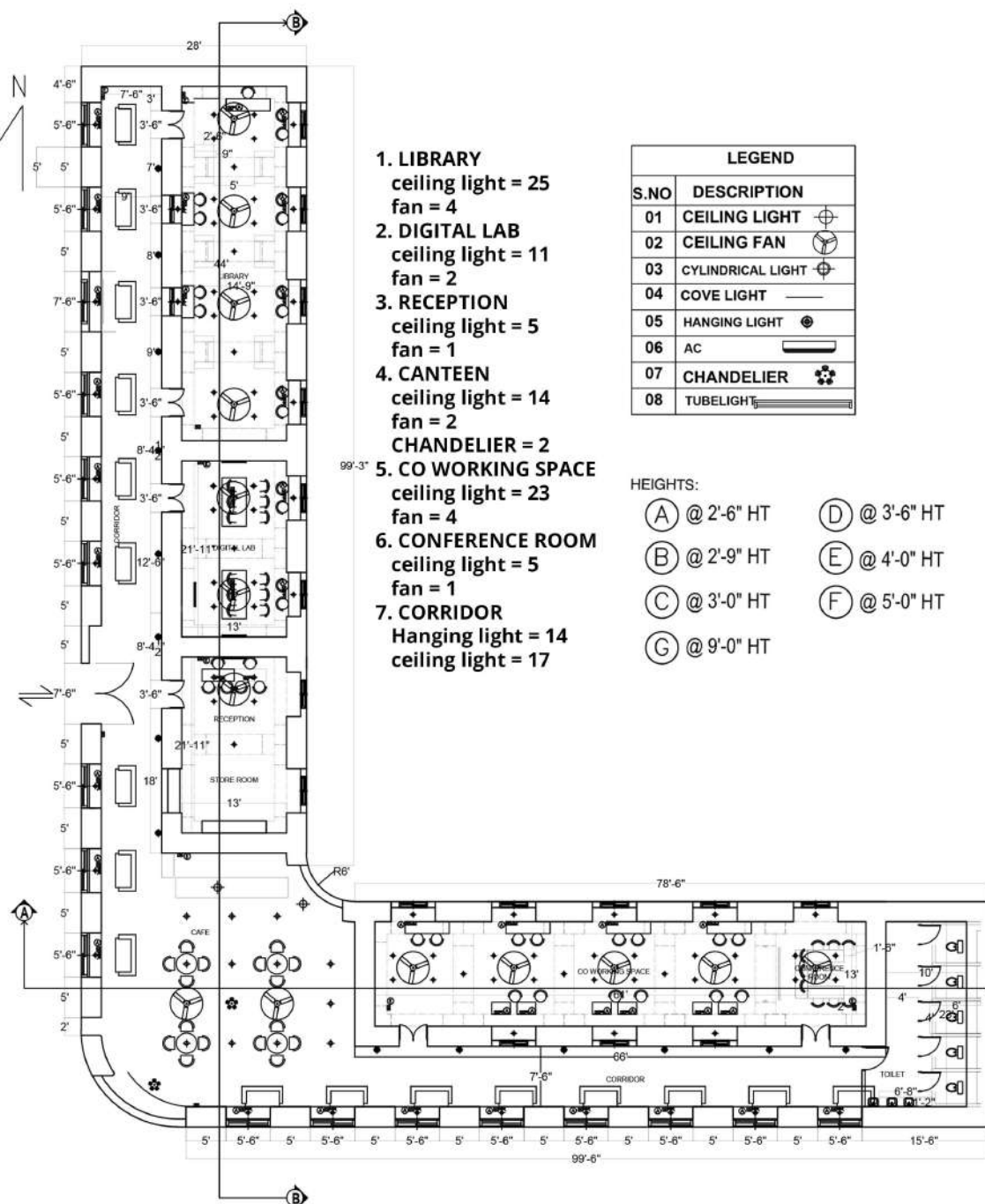
FURNITURE MOOD BOARD:



COST OF ESTIMATION :

- FLOOR TILES (SUPPLY + LAYING) 4351 SQ.FT : ₹6,30,895 (₹145/SQ.FT)**
- WALL PLASTER + PRIMER + PAINT 5662 SQ.FT :₹3,68,030 (₹65/SQ.FT)**
- TILE UPTO 3' (SUPPLY + LAYING) 1092 SQ.FT : ₹1,58,340 (₹145/SQ.FT)**
- LIGHTING FIXTURES + WIRING, DB, SWITCHES: ₹150,000**
- MINOR CARPENTRY & DOOR/WINDOW TOUCHUPS: ₹40,000**
- CONSUMABLES, ADHESIVES, GROUT, SEALANTS, SMALL HARDWARE: ₹30,000**
- SUBTOTAL MATERIALS & FIXTURES: ₹13,77,265**
- LABOUR & INSTALLATION (APPROX 34% OF MATERIALS): ₹468,270**
- SUBTOTAL (MATERIALS + LABOUR): ₹18,45,535**
- CONTINGENCY (10%): ₹1,84,553**
- SUBTOTAL (MATERIALS + LABOUR): ₹20,30,088**

ELECTRICAL LAYOUT :



UNDER FLOW RACEWAY WIRING:

1. Structural Slab (Concrete Base)
Foundation layer that supports the floor system and wiring infrastructure



2. Power & Data Cable Network
Carries power and communication lines to various floor points



3. Raceway Channel (PVC/ Metal)
Encloses and organizes electrical and data cables safely



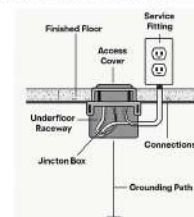
4. Protective Mortar Bed / Screed Layer
Provides a level base, protects raceways and absorbs load impact



5. Tile Flooring/Stone Finish
Final surface layer providing a durable, aesthetic walking finish



- * UNDERFLOOR RACEWAY WIRING keeps all POWER and DATA CABLES hidden, creating a CLEAN AND MODERN LOOK.
- * It offers FLEXIBILITY for FUTURE EXPANSION without major civil work.
- * Improves SPACE UTILIZATION with no wall or ceiling trunking needed.
- * Allows EASY MAINTENANCE through accessible floor panels.
- * Enhances AESTHETICS and supports SMART BUILDING SYSTEMS.



VIEWS:

CORRIDOR OF BUILDING



ENTRANCE OF LIBRARY



CORRIDOR VIEW



LIBRARY VIEW



CO WORKING SPACE



CONFERENCE ROOM



CORRIDOR VIEW



CANTEEN VIEW



CANTEEN VIEW

