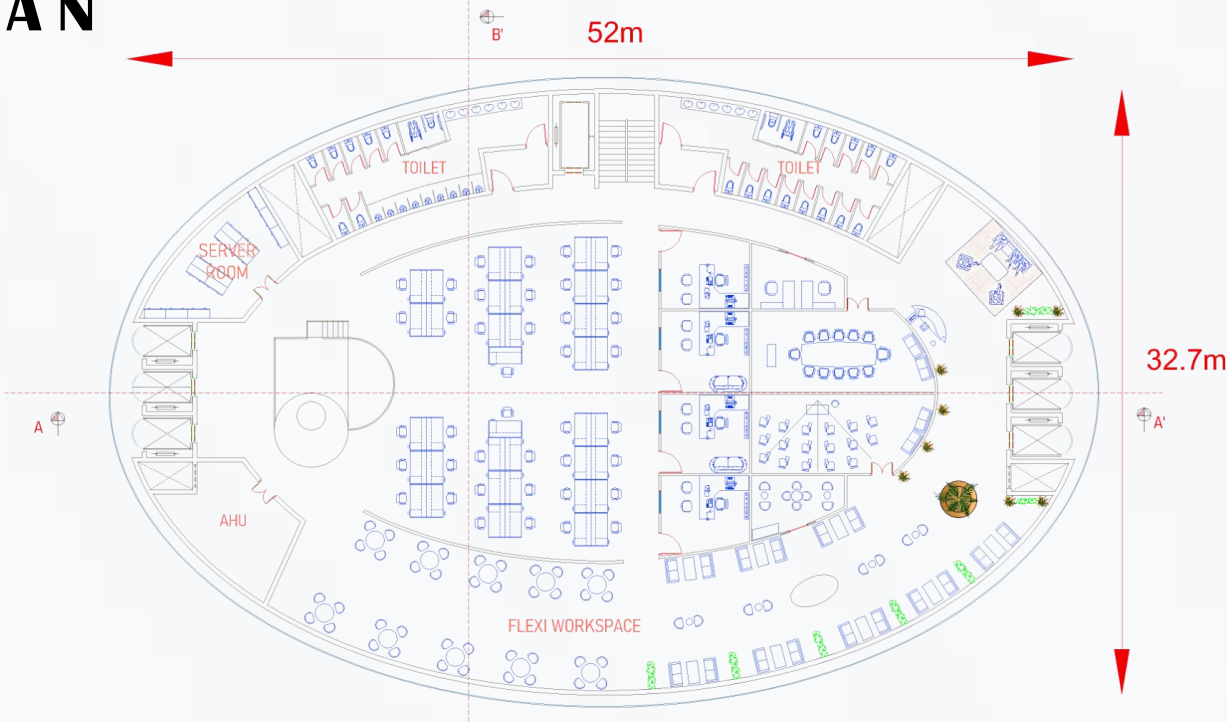


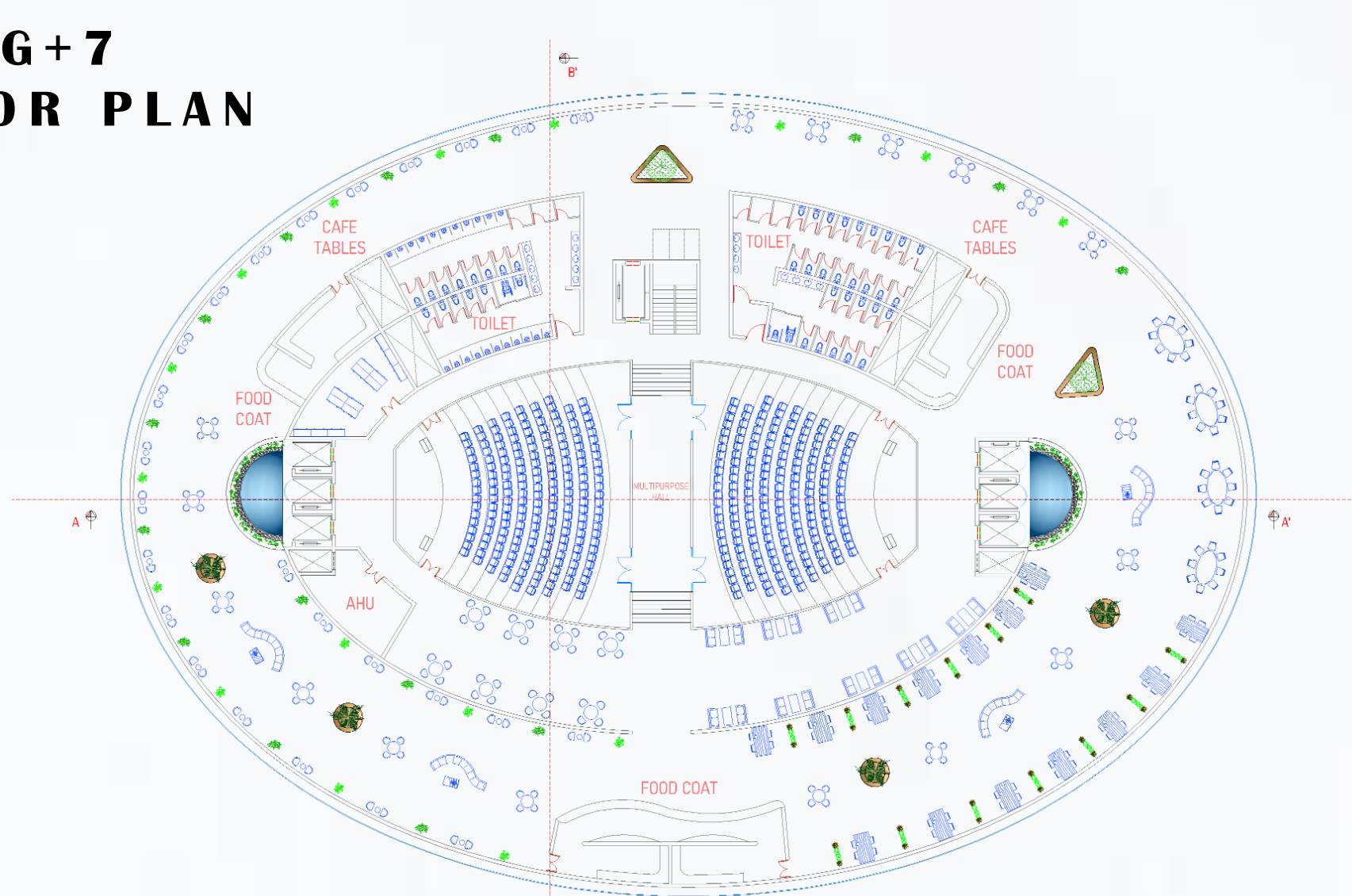
# OFFICE DESIGN

- The design concept utilizes elements of design flow and rhythm while employing modern materials to achieve environmental friendliness and full functionality for the occupants. In the site I used 14meter setback for all over side for the high raise building
- In the plan, I utilized separate core spaces for the elevator at the center I placed an easily accessible emergency exit, facilitating swift access to the restroom with wheelchair accessibility. I allocated a focused working space at the center with the conceptual model. On the other side I designated a cabin space as a semi-public area and incorporated flexible working spaces for meeting rooms and café point etc..

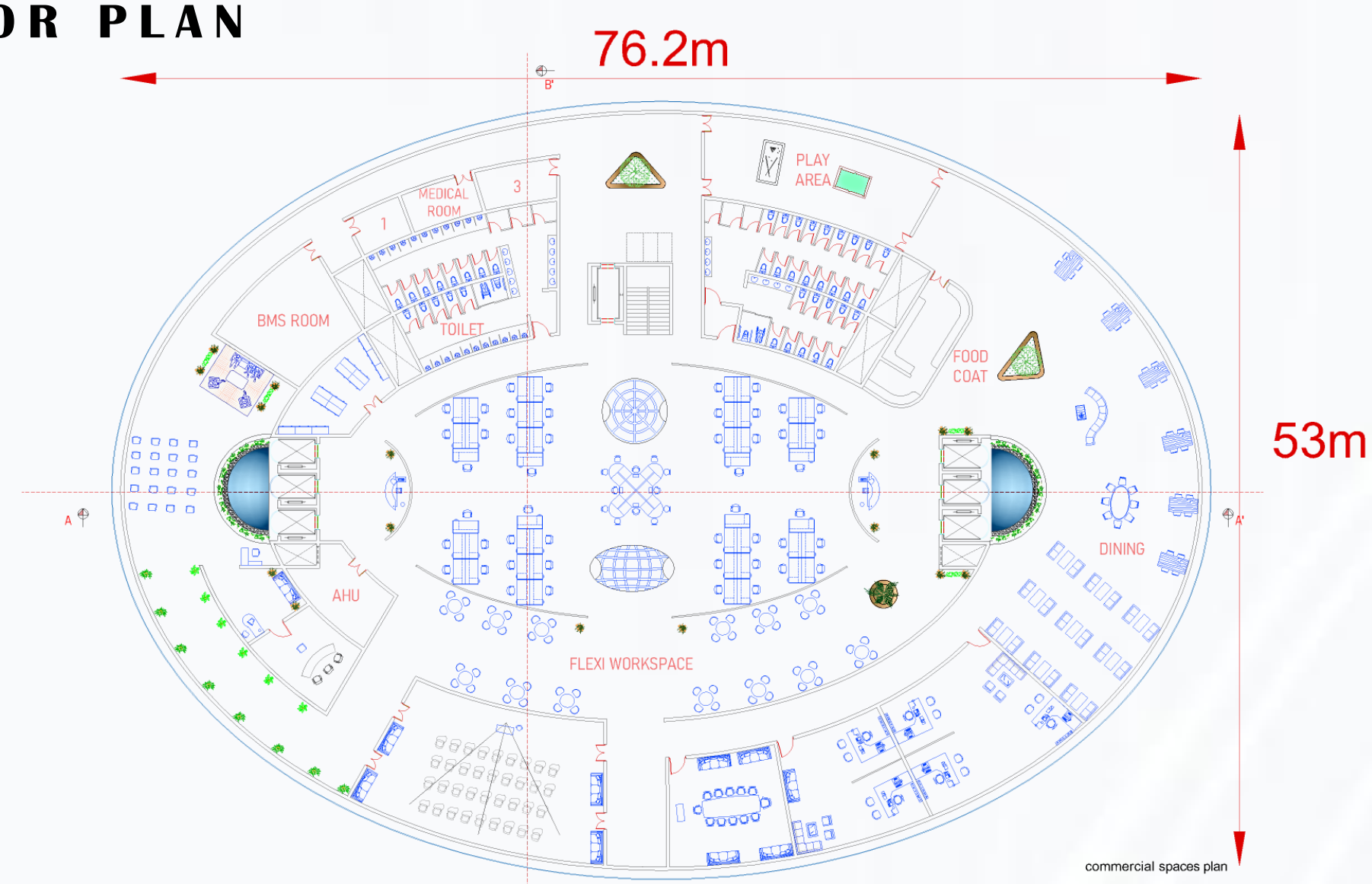
**G+7 TO G+10 FLOOR PLAN**



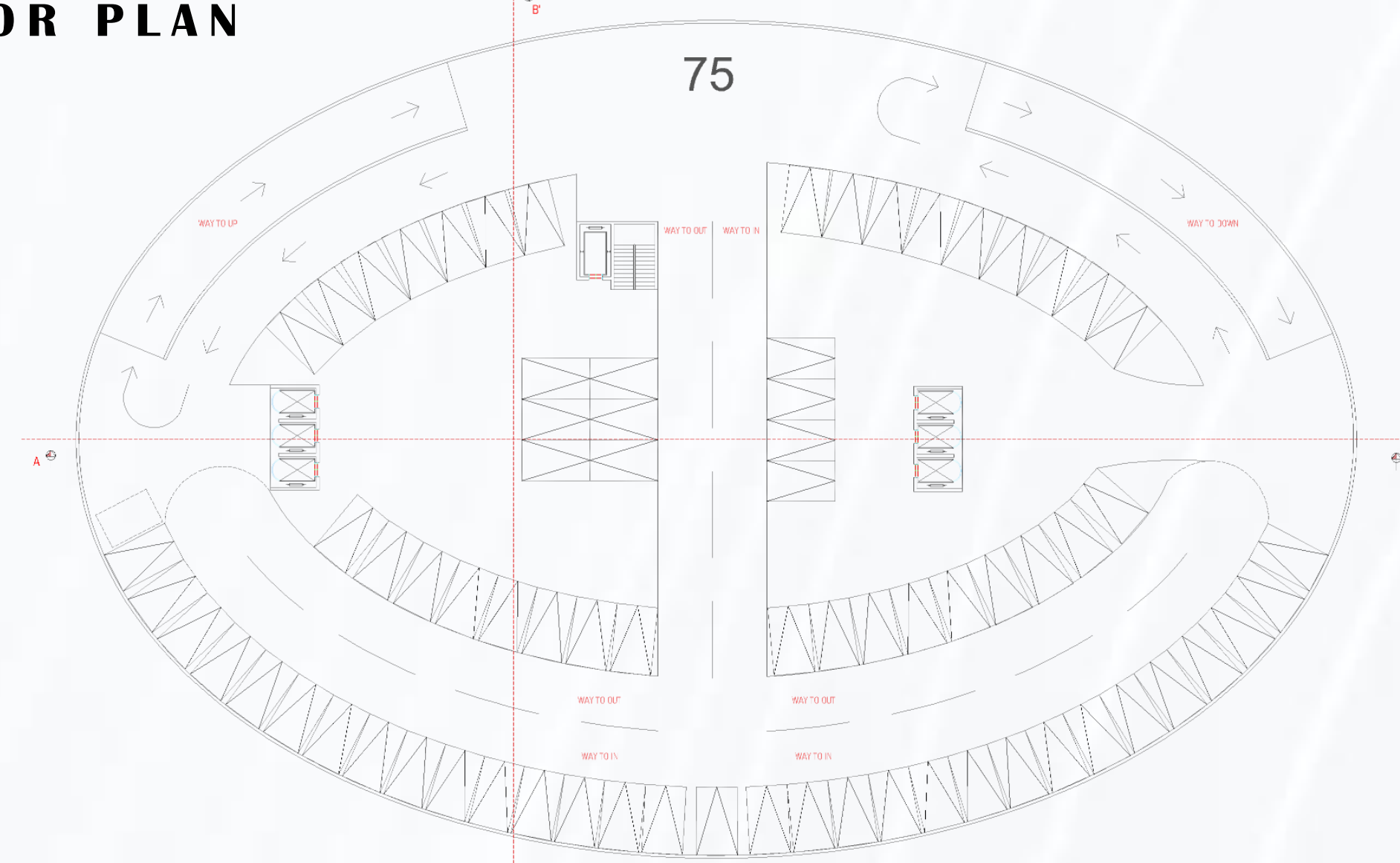
**G+7 FLOOR PLAN**



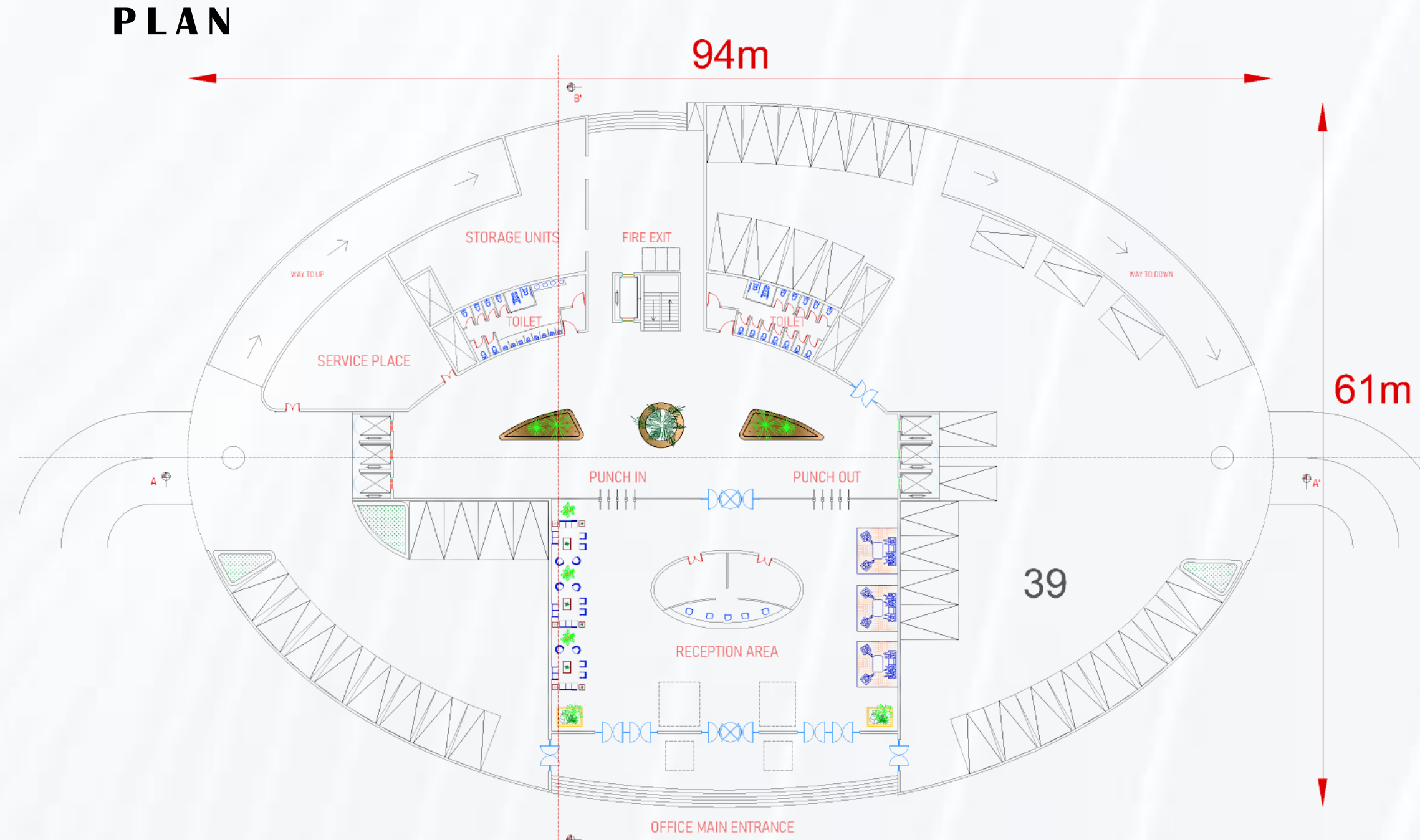
**G+6 FLOOR PLAN**



**G+1 TO G+5 FLOOR PLAN**

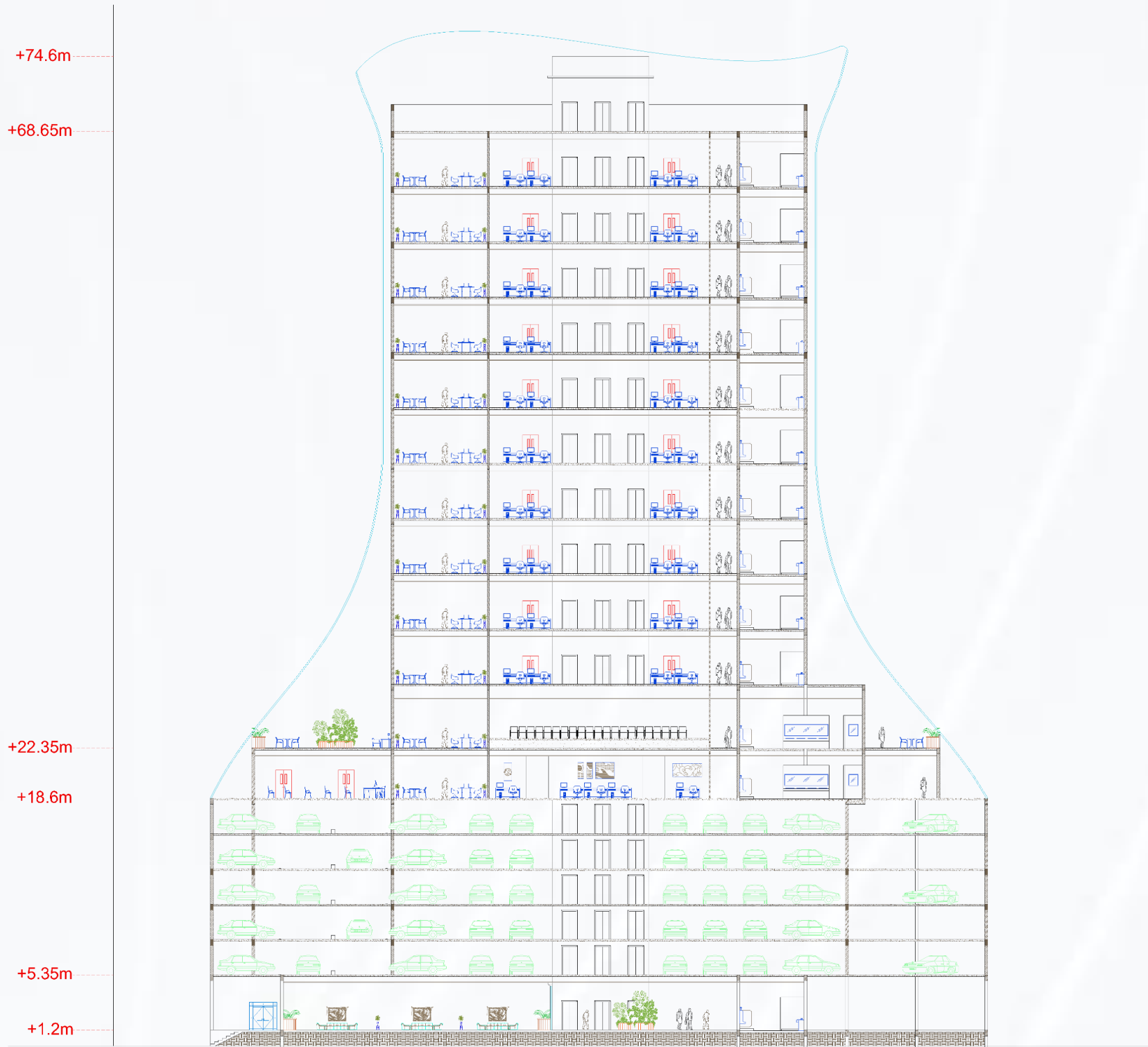


**GROUND FLOOR PLAN**



**TYPICAL FLOOR PLANS, SCALE=1:50**

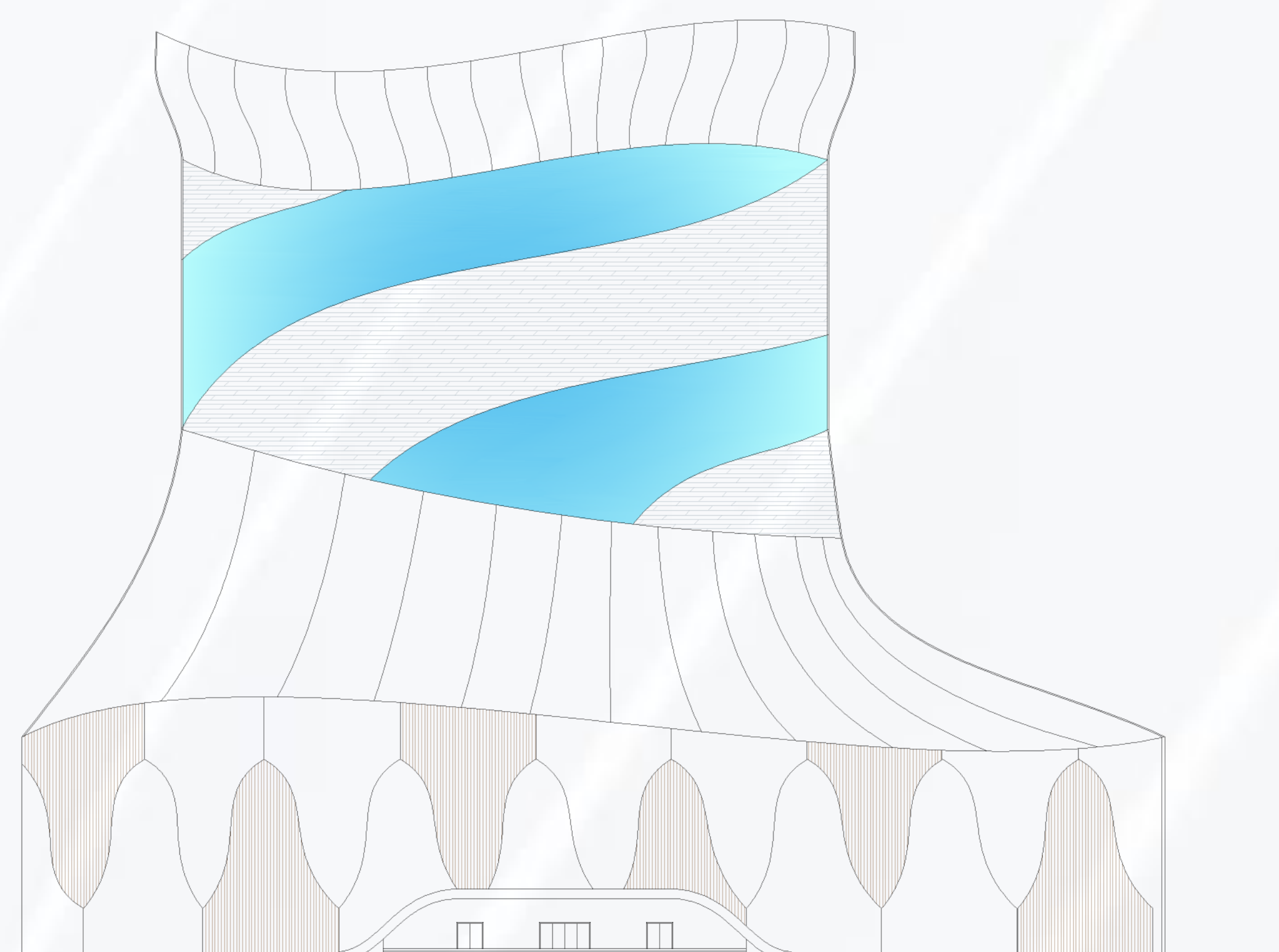
- LOCATION: ADYAR, CHENNAI
- SITE AREA: 22,800SQ.M
- PLOT COVERAGE: 50%
- FSI: 2
- NO.OF PARKING: 400



**SECTION B-B'**



**SECTION A-A'**



**ELEVATION**



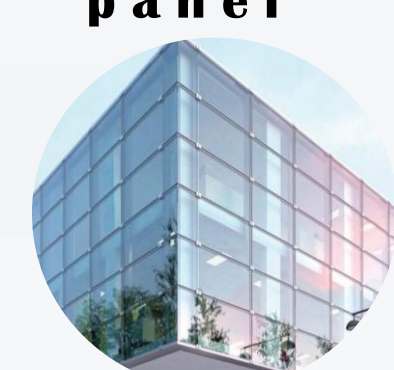
**Aluminium cladding**



**Aluminium panel**

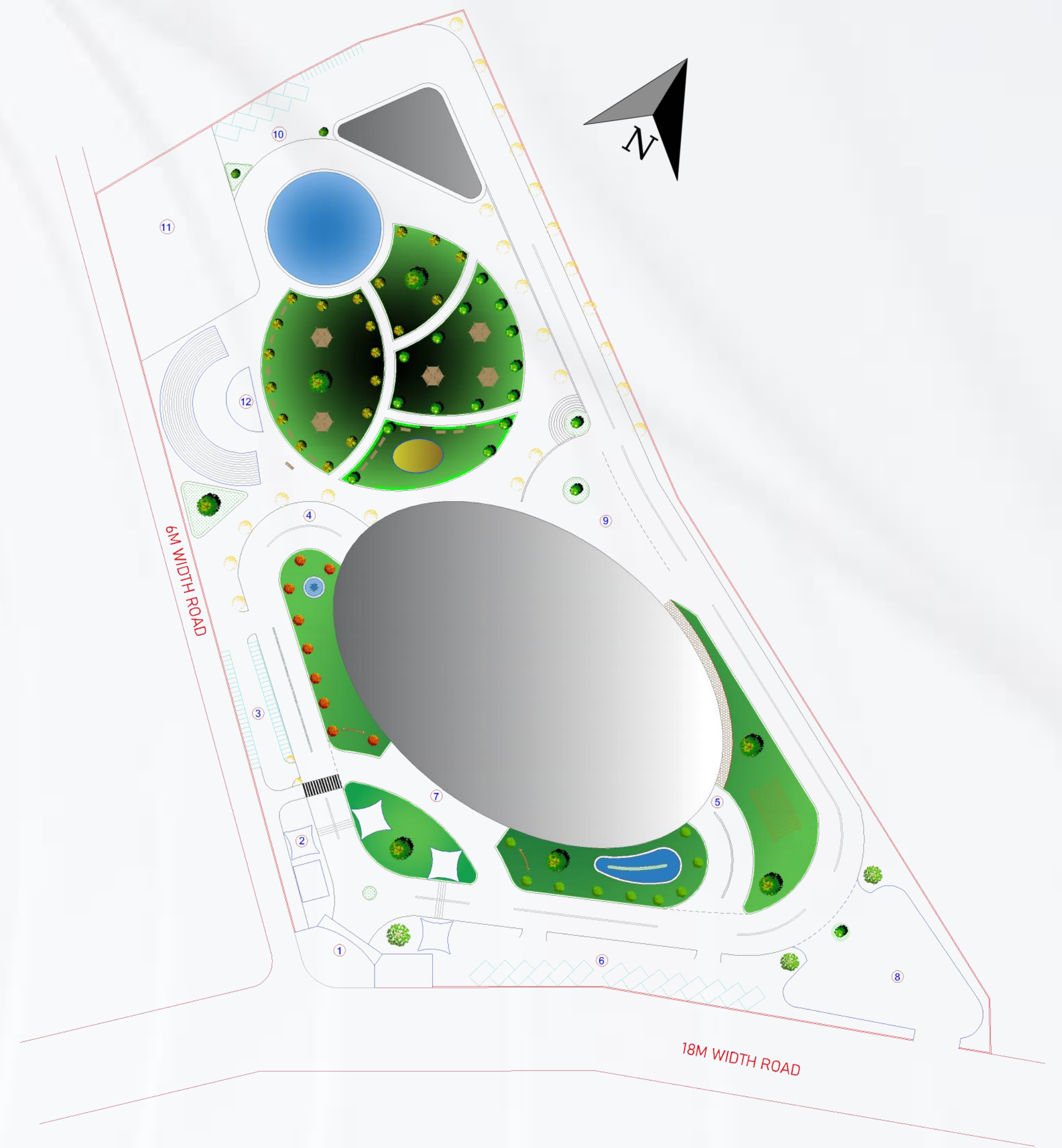


**Tensile material**



**glass**

The exterior façade of the office building features a modern, glossy finish using materials such as aluminium cladding, which is present in the multilevel parking space. Above this, a space frame system supports a flowing roof structure, utilizing PTFE (polytetrafluoroethylene), commonly known as teflon, coated materials. The façade is offset from the main structure by a distance of 3 feet, creating a distinctive visual separation. Additionally, glass panels are strategically placed at various elevations to provide expansive city views from the elevator. This design not only enhances the building's aesthetic appeal but also maximizes functionality and the overall user experience, creating a dynamic and modern workspace.

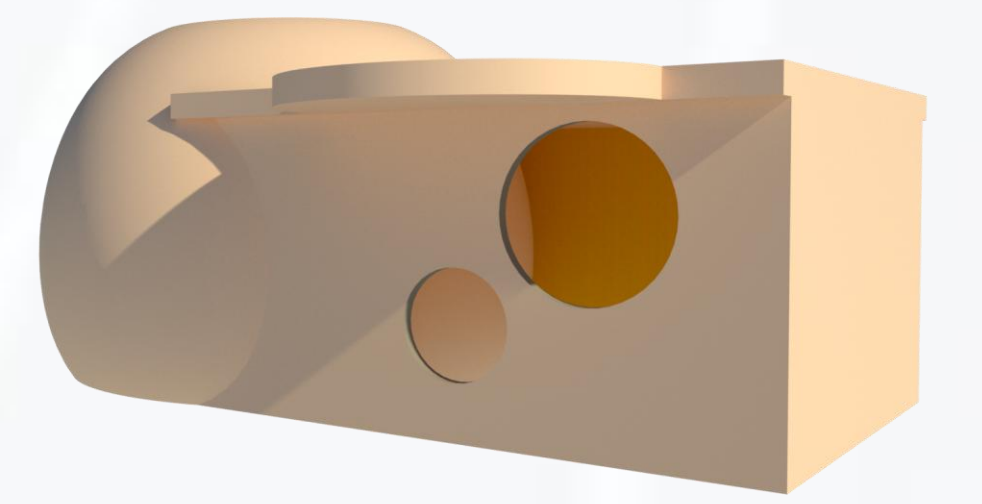


**SITE PLAN, SCALE=1:100**

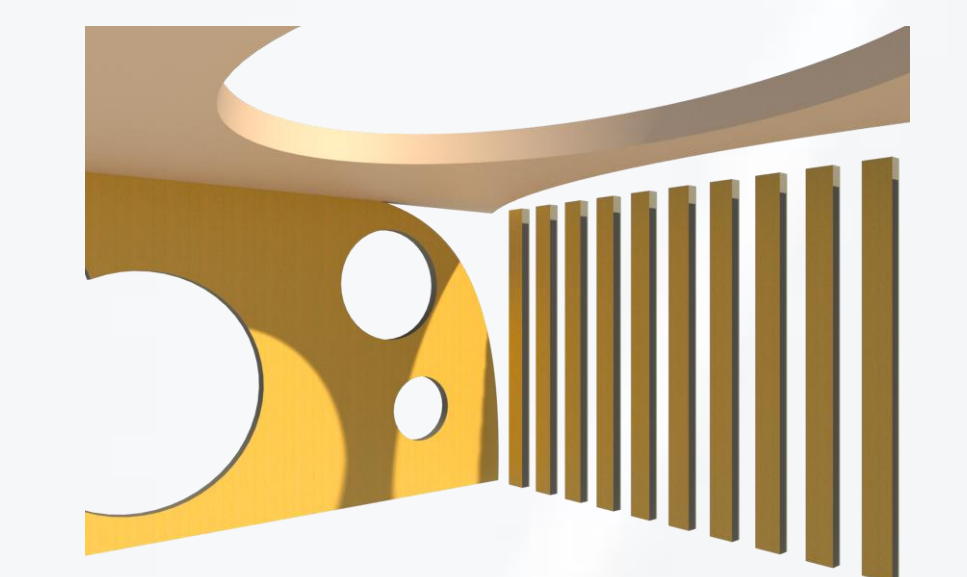
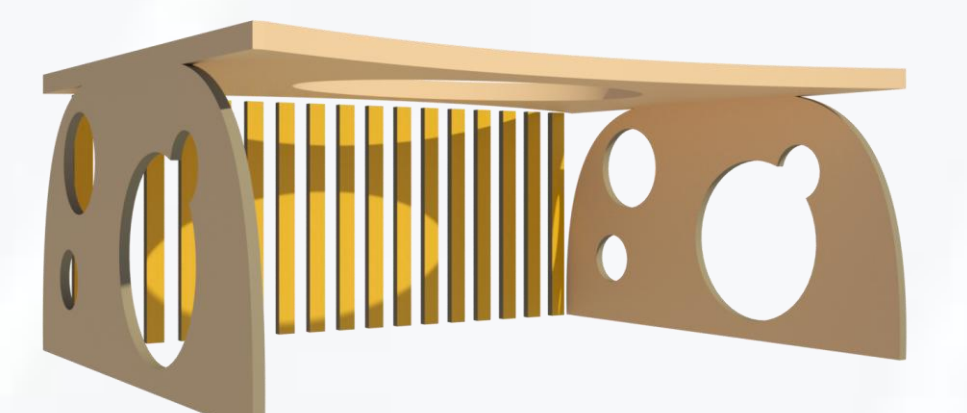
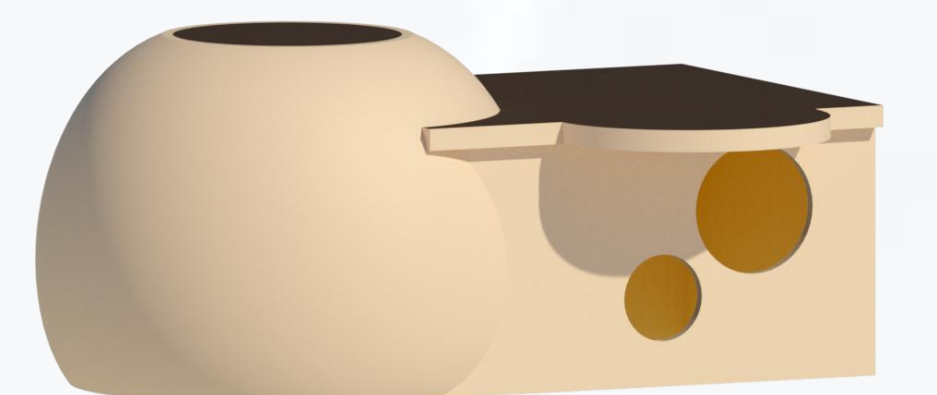
**LEGEND**

1. MAIN GATE
2. CHECK POINT & SECURITY ROOM
3. TWO-WHEELER PARKING
4. MULTILEVEL PARKING ENTRANCE
5. MULTILEVEL PARKING EXIT
6. PAID PARKING ZONE
7. PEDESTRAIN ENTRANCE
8. SERVICE ENTRY
9. EMERGENCY EXIT
10. SERVICE PARKING
11. OSR
12. AMPHITHEATRE
13. CAFÉ WITH LANDSCAPE
14. POND

**MODEL 1**



**MODEL 2**



**SPACE WITHIN SPACE MODELS**

- These models are inspired by the "space within a space" concept, creating a series of interconnected, multi-functional areas.
- In this conceptual model, the working space is designed to allow people to work, relax, and engage in various activities.
- This results in an unusual and dynamic working environment that breaks away from traditional office layouts, encouraging creativity and providing a refreshing change for employees.