

# OFFICE DESIGN

The office buildings are the most visible index of economic, social, technological and financially progressive activity that symbolizes much about the 21st century dominating the skylines of cities in every continent.

**OBJECTIVES :** To explore the design and form of building typologies that are the result of pressure on urban lands. To highlight the importance of high rise buildings

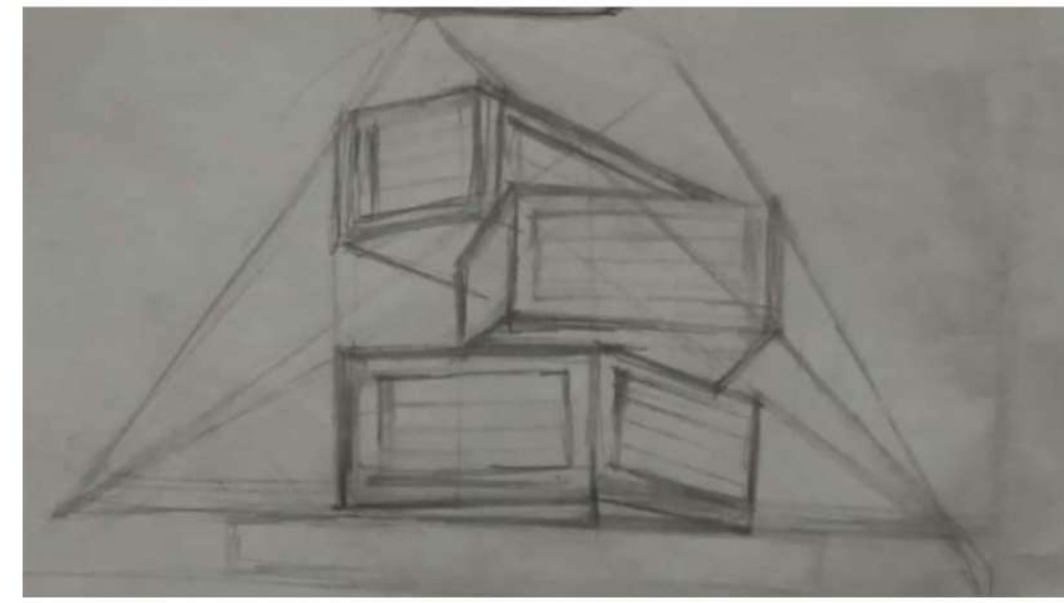
**SITE LOCATION :** Olympia cyberspace, guindy  
**SITE AREA :** 22,800sq.m ( 5.6 acres)  
**ORIENTATION :** south - west direction  
**BUILTUP AREA :** 45576sq.m  
**TYPICAL FLOOR AREA :** 3287 sqm  
**ACHIEVED BUILDUP AREA :** 39444 sq.m  
**CAR PARKING :** 57  
**BIKE PARKING :** 15  
**OSR - 10% =**2280 sq.m



INTERIOR VIEWS

## CONCEPT: SHIFTED VOLUMETRIC STRUCTURES

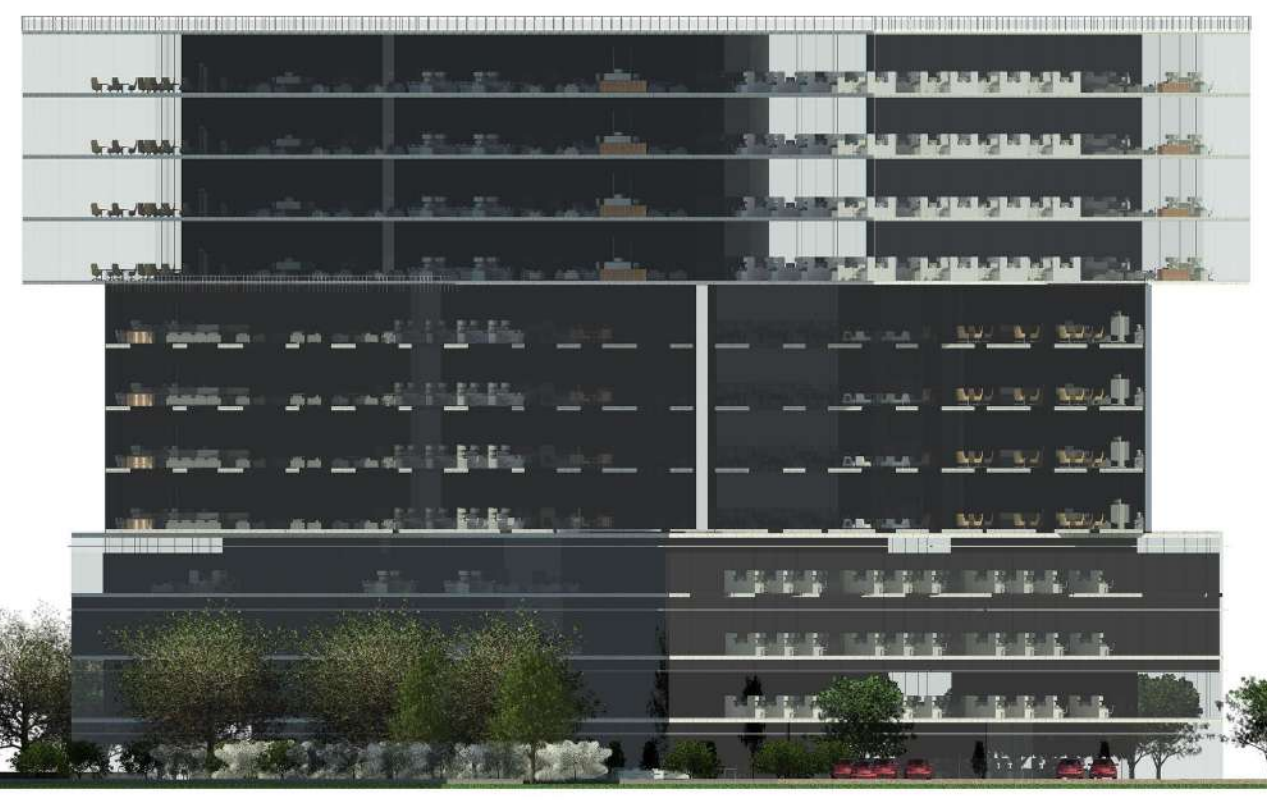
Three volumes twisted horizontally at an angle according to the availability of daylighting and wind flow inside the building



3D VIEW



WEST ELEVATION



SOUTH ELEVATION



NORTH ELEVATION

MATERIAL BOARD:



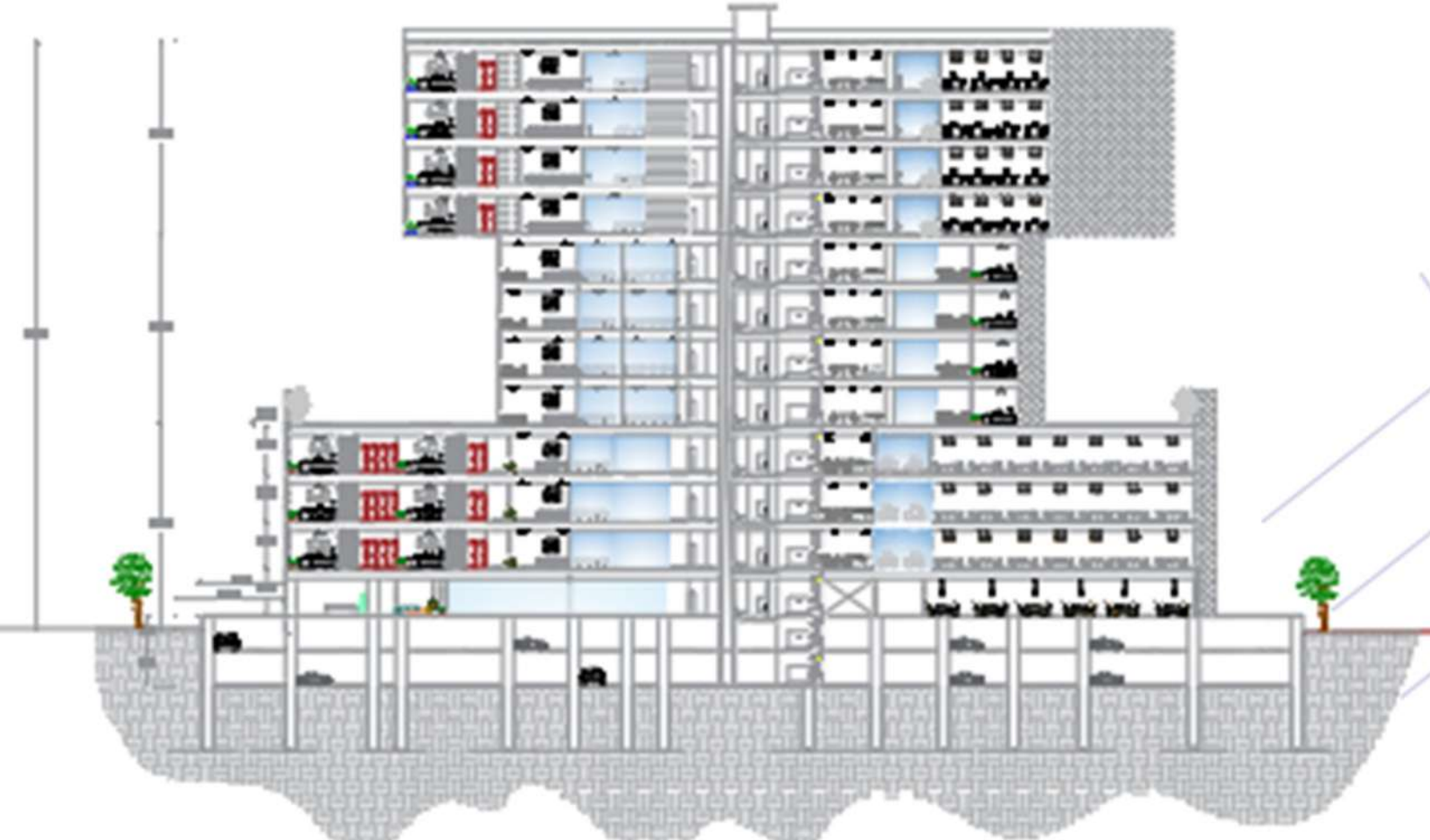
Concrete, glasses curtain walls are the main materials that is used in the building



LEGENDS:

1. ENTRY PATHWAY
2. BASEMENT ENTRY
3. ON-SITE PARKING
4. PEDESTRIAN PATHWAY
5. OFFICE BUILDING
6. BUS PARKING
7. AMPHITHEATRE
8. OUTDOOR SEATING
9. KIOSK/OUTDOOR CAFE
10. WTP
11. STP
12. BASEMENT EXIT
13. SERVICE ENTRY
14. SERVICE EXIT
15. OSR
16. DROP OFF

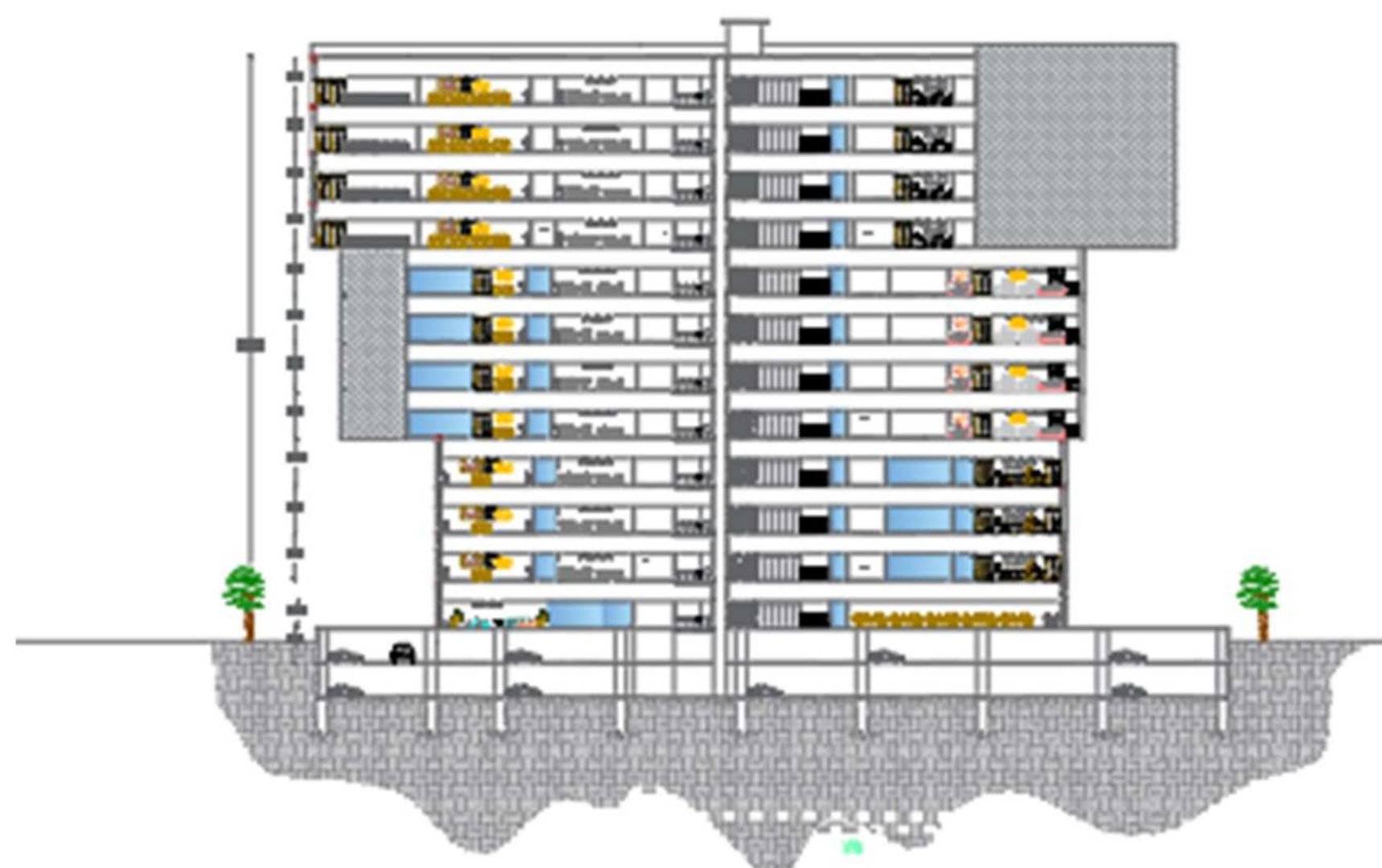
SITE PLAN SCALE : 1:200



SECTION B B'



BASEMENT FLOOR PLAN



SECTION A A'

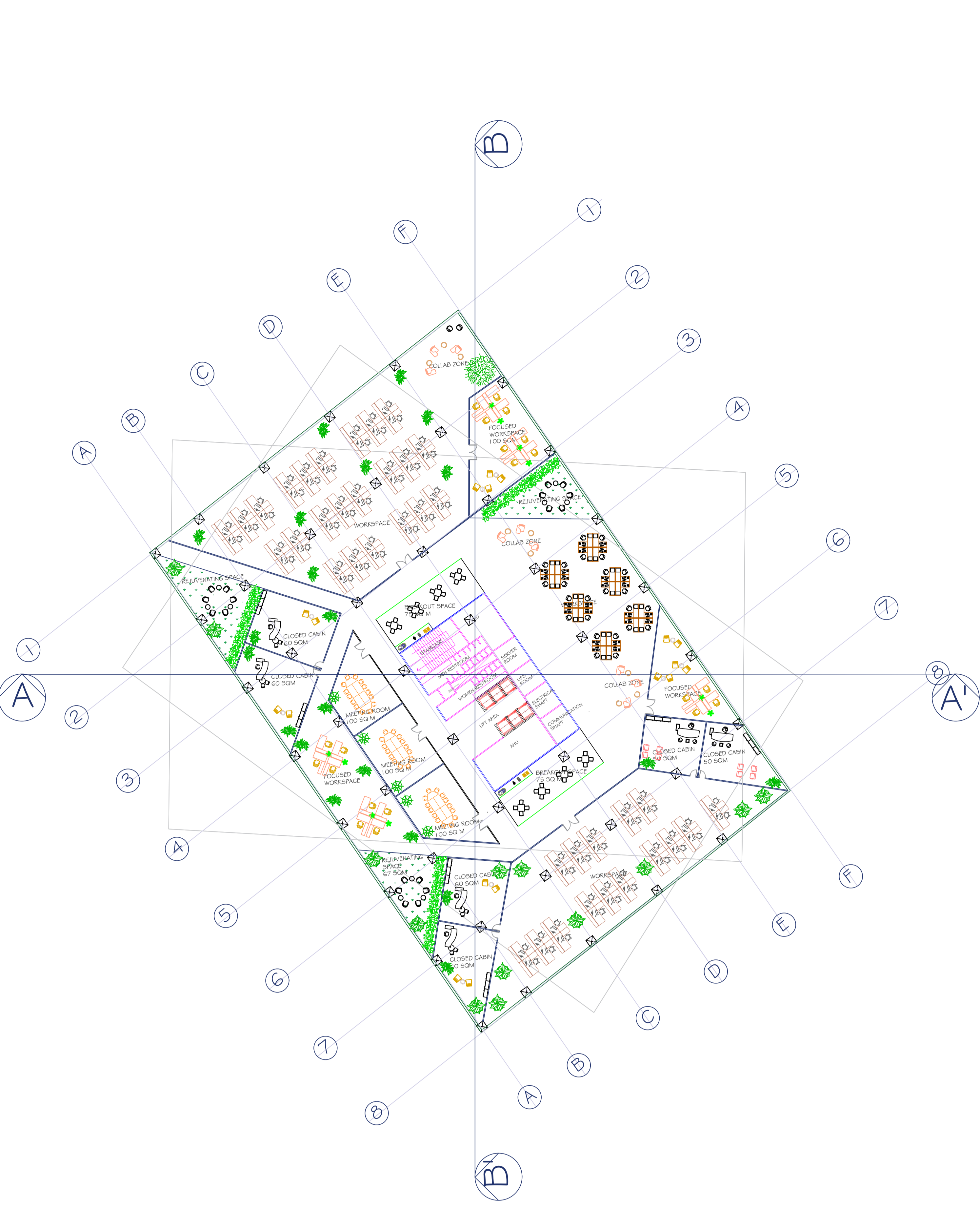


EAST ELEVATION

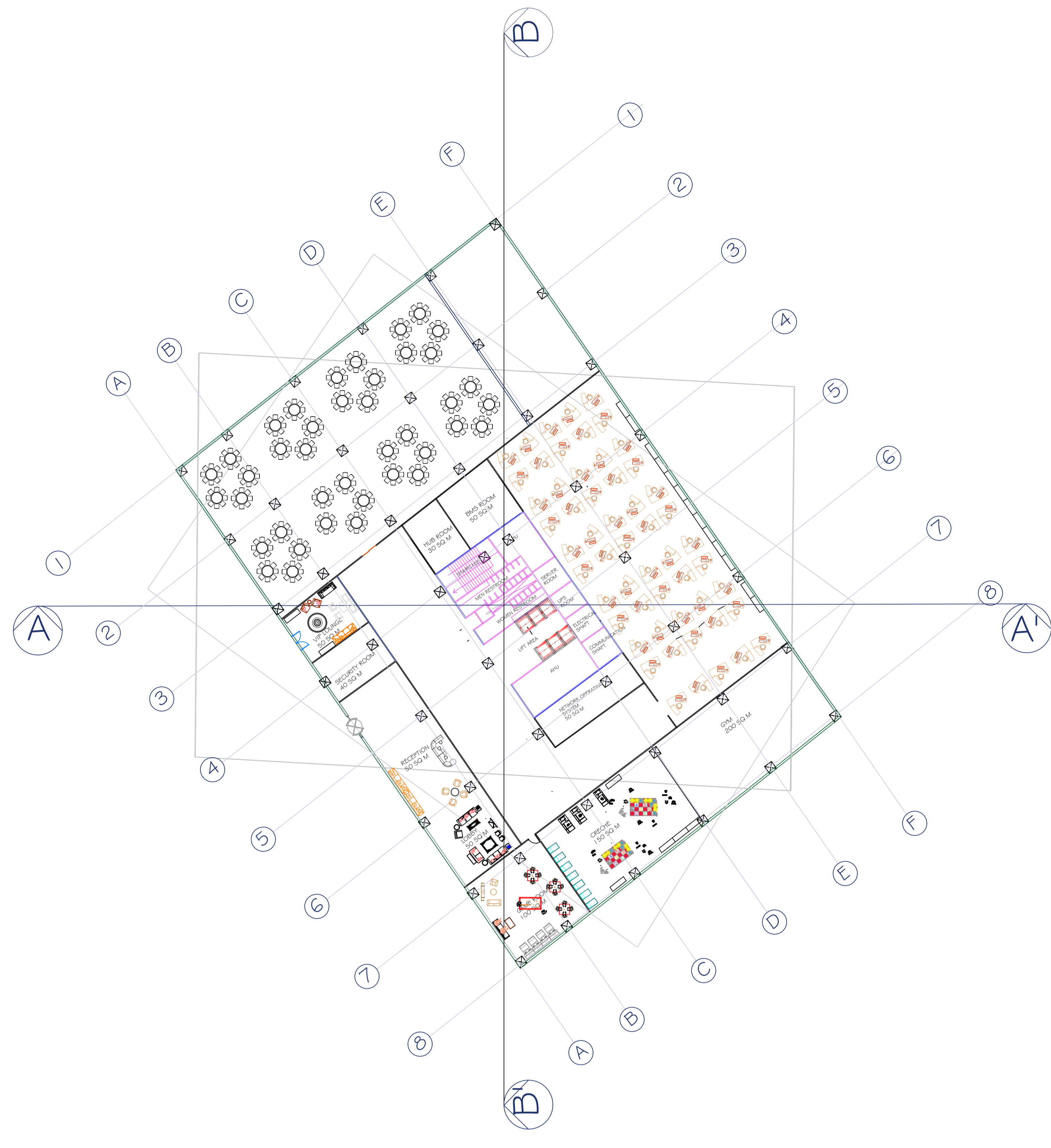


1ST VOLUME GROUND FLOOR PLAN

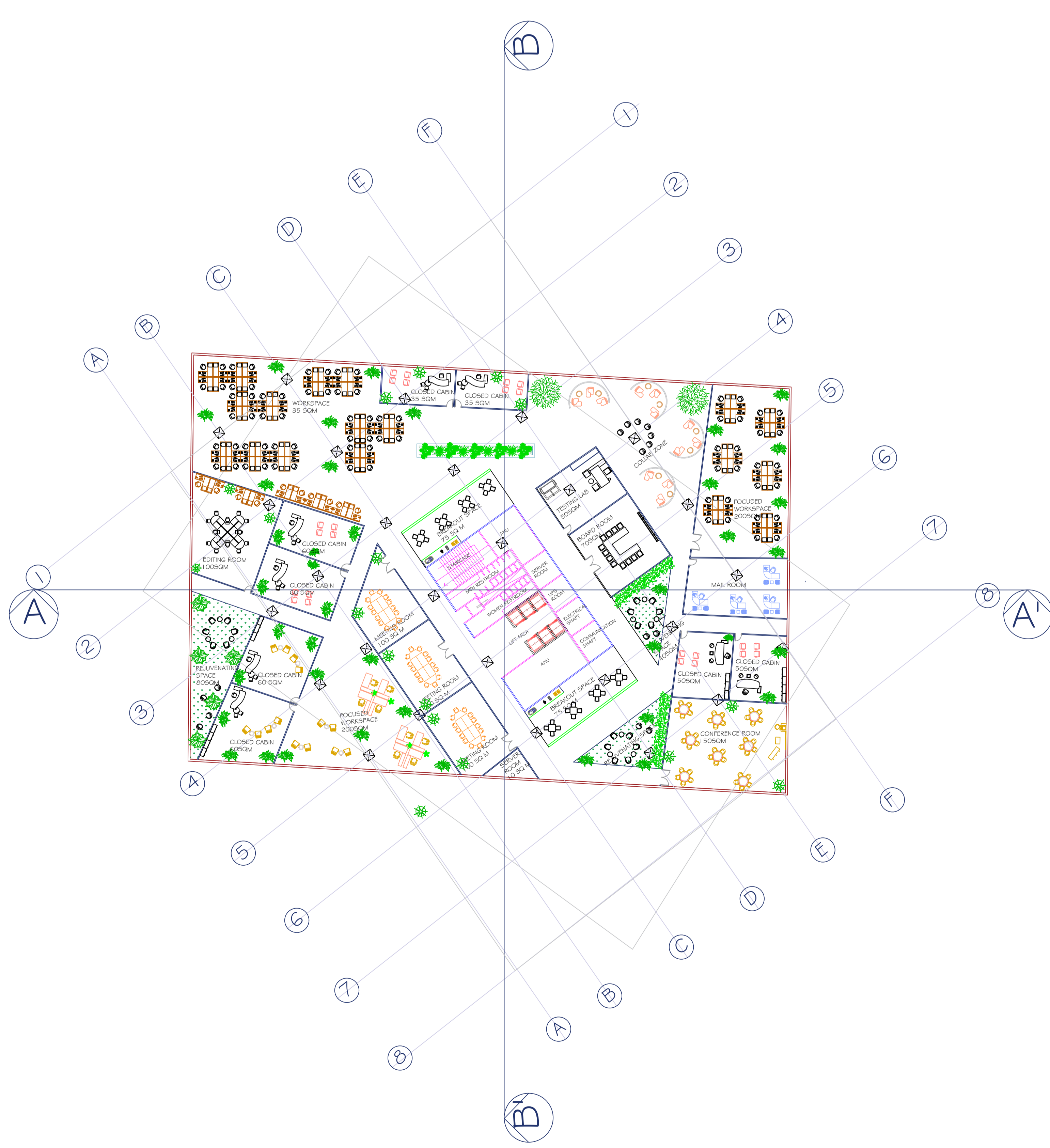




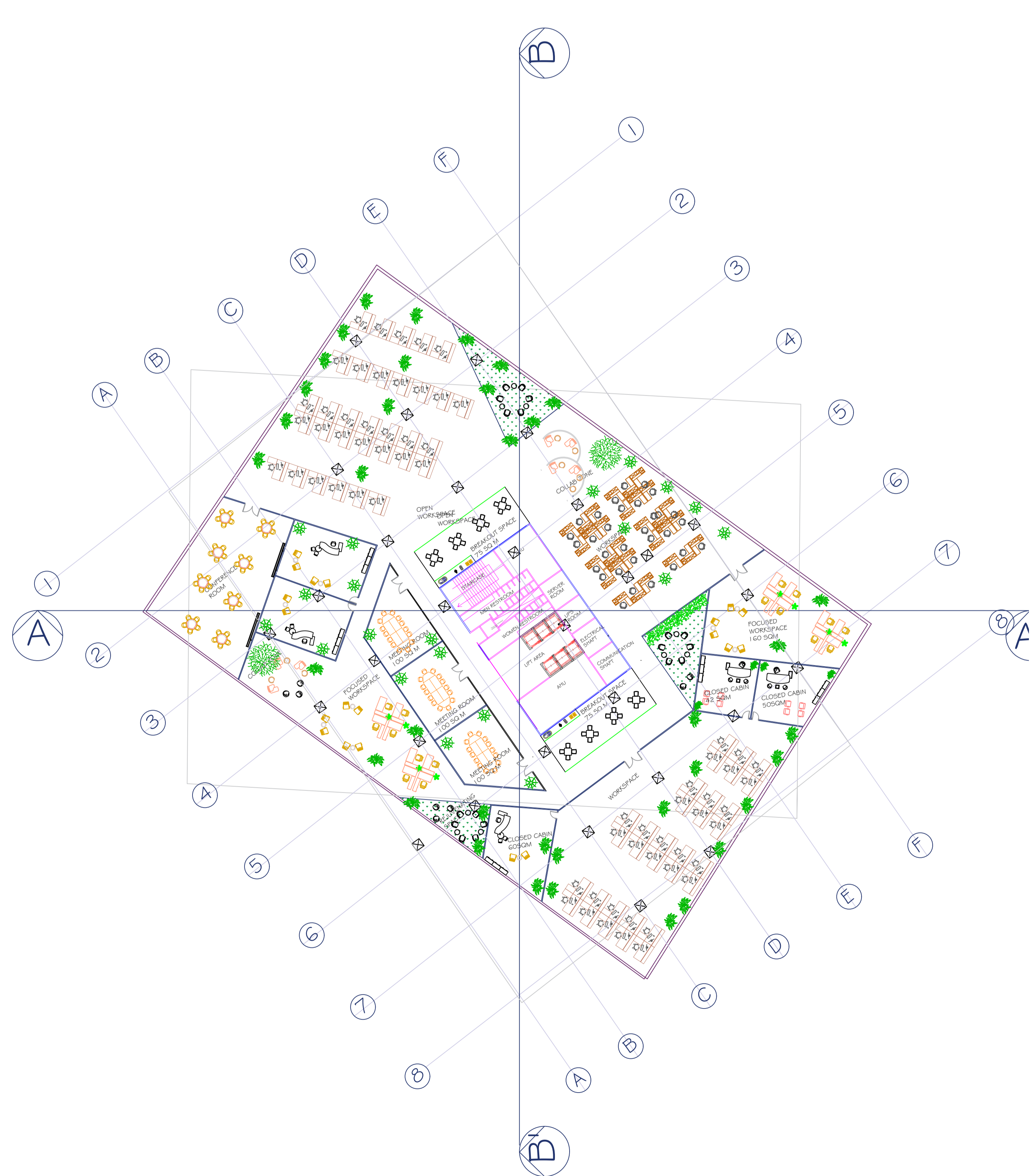
TYPICAL FLOOR PLAN -  
FIRST VOLUME



GROUND FLOOR PLAN -  
FIRST VOLUME



TYPICAL FLOOR PLAN -  
SECOND VOLUME



TYPICAL FLOOR PLAN -  
THIRD VOLUME