

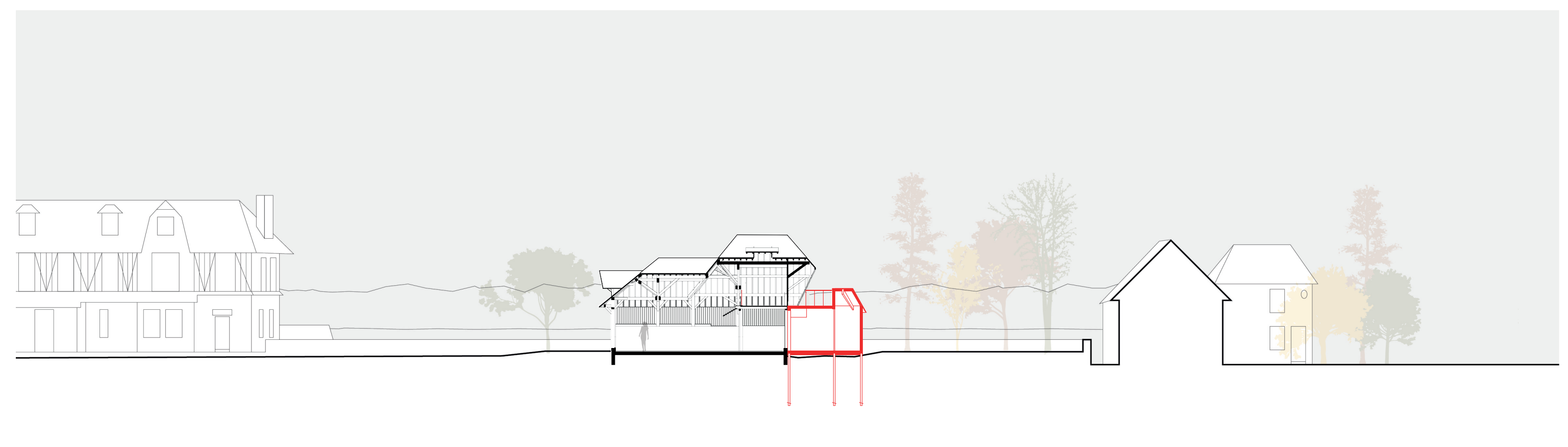
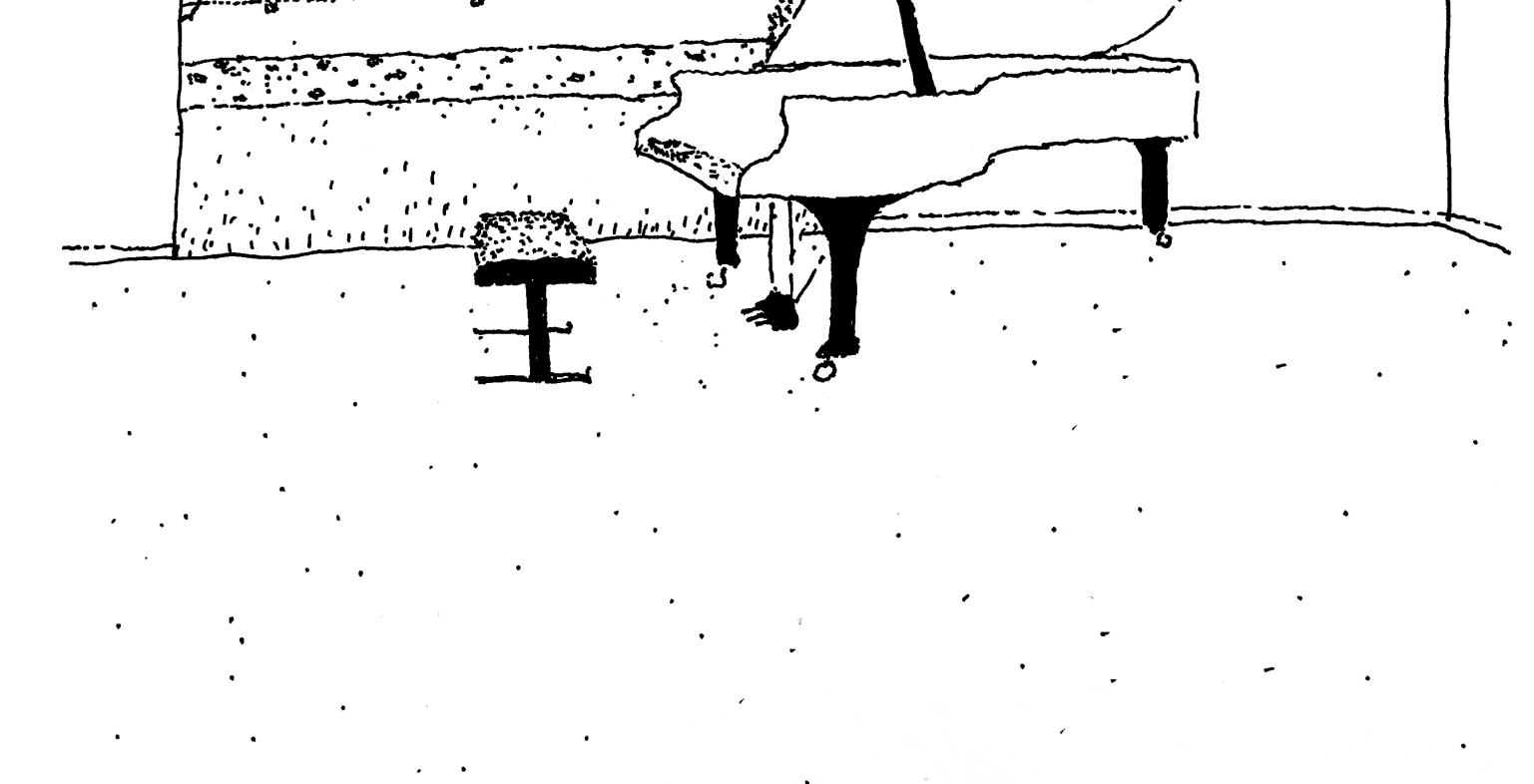
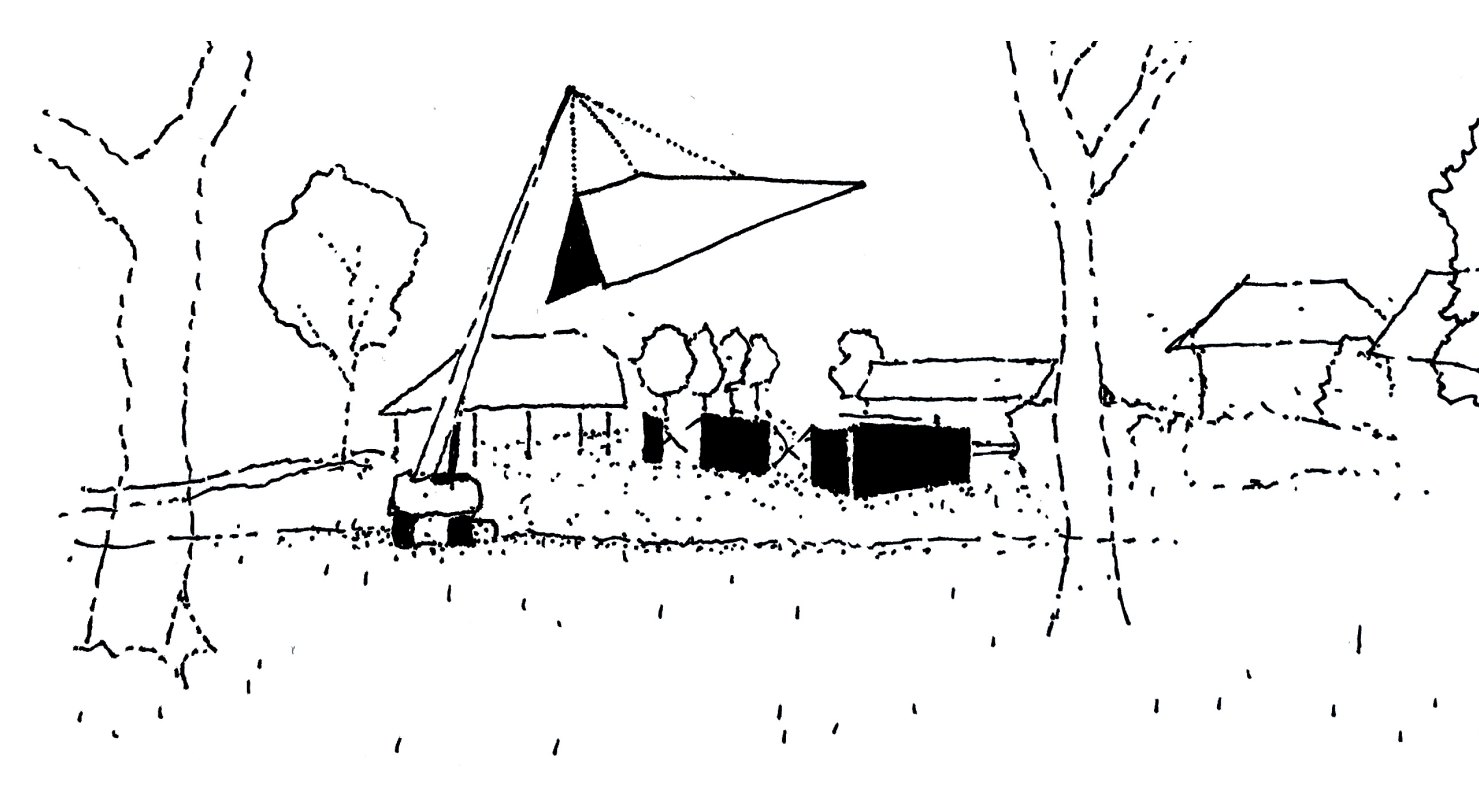
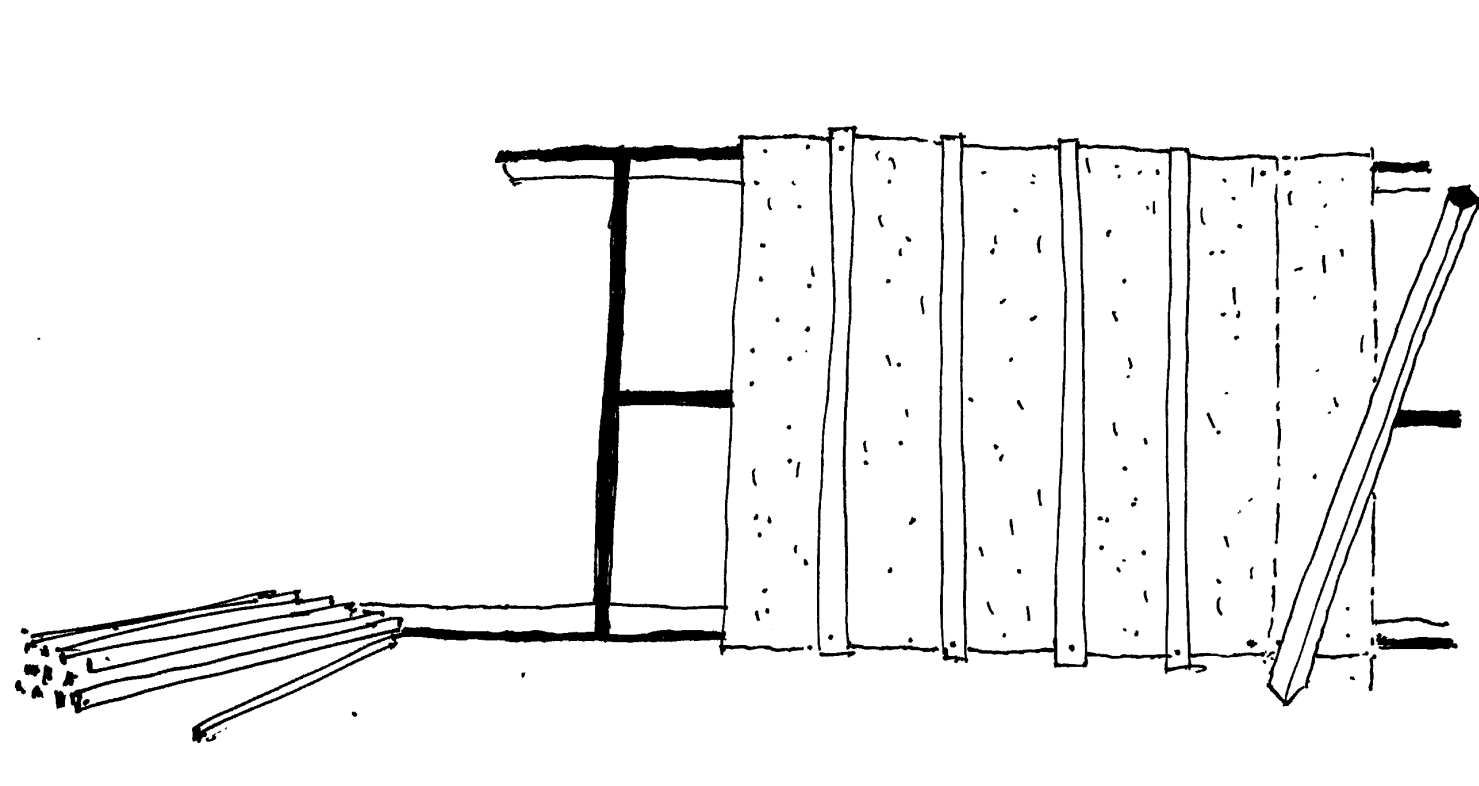
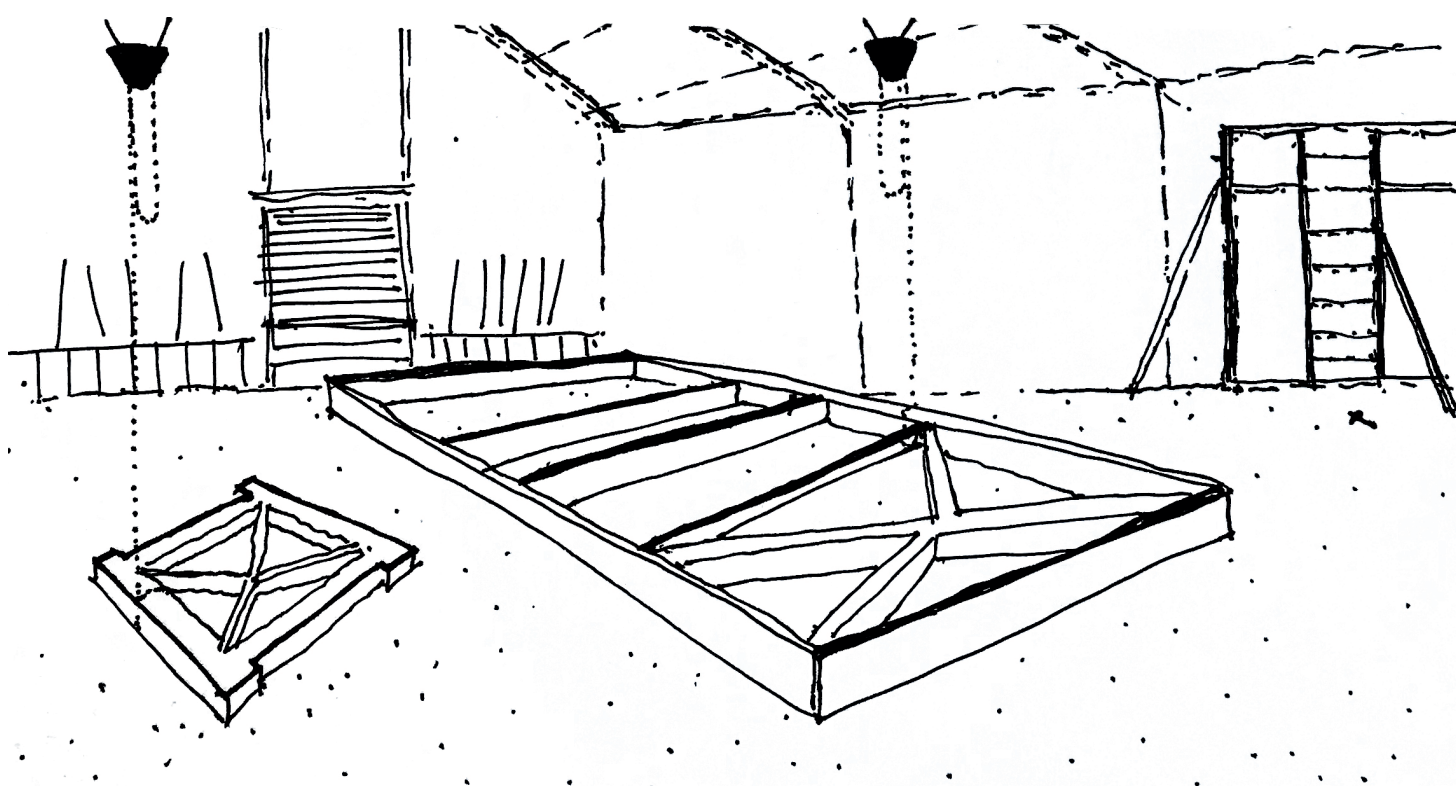
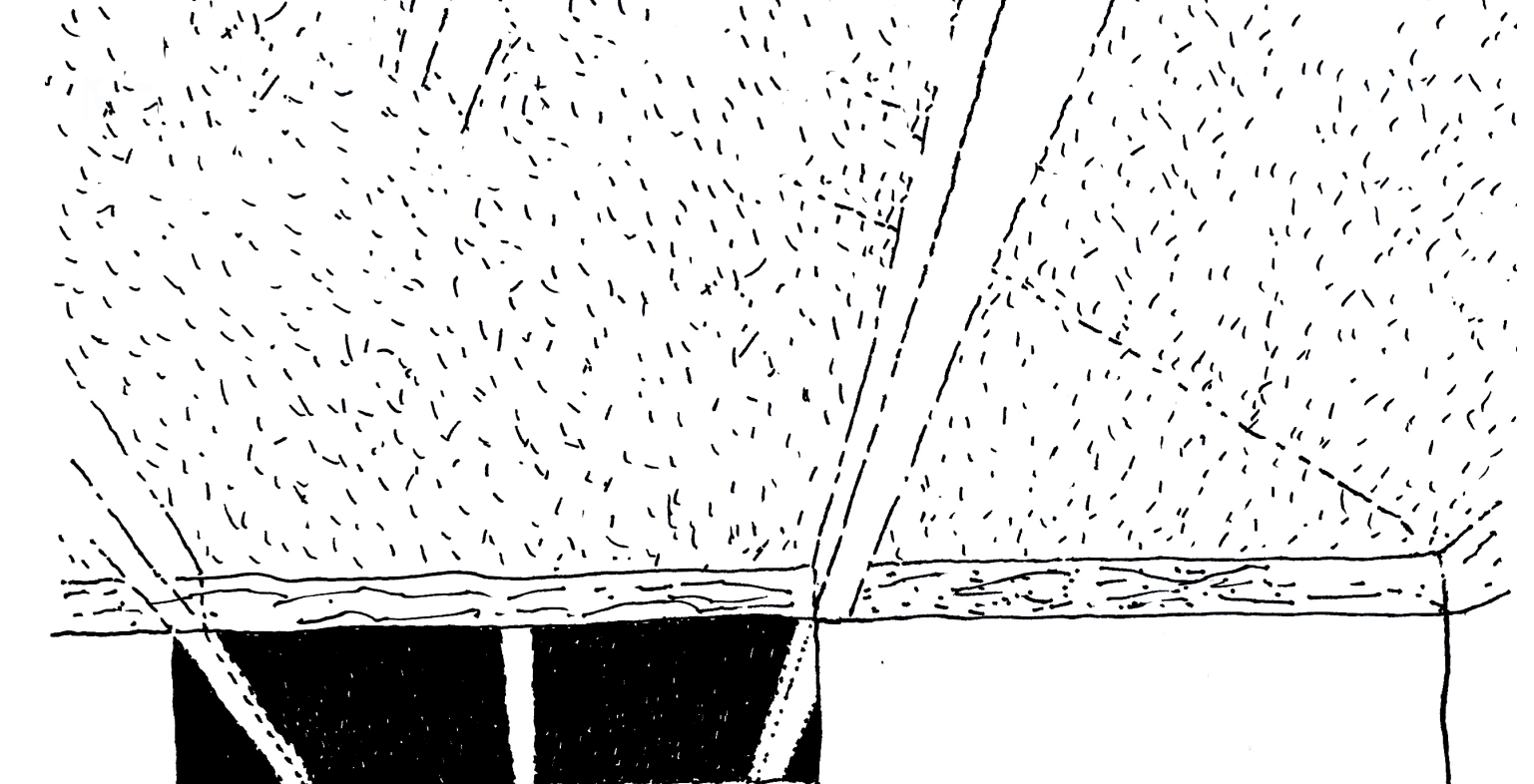
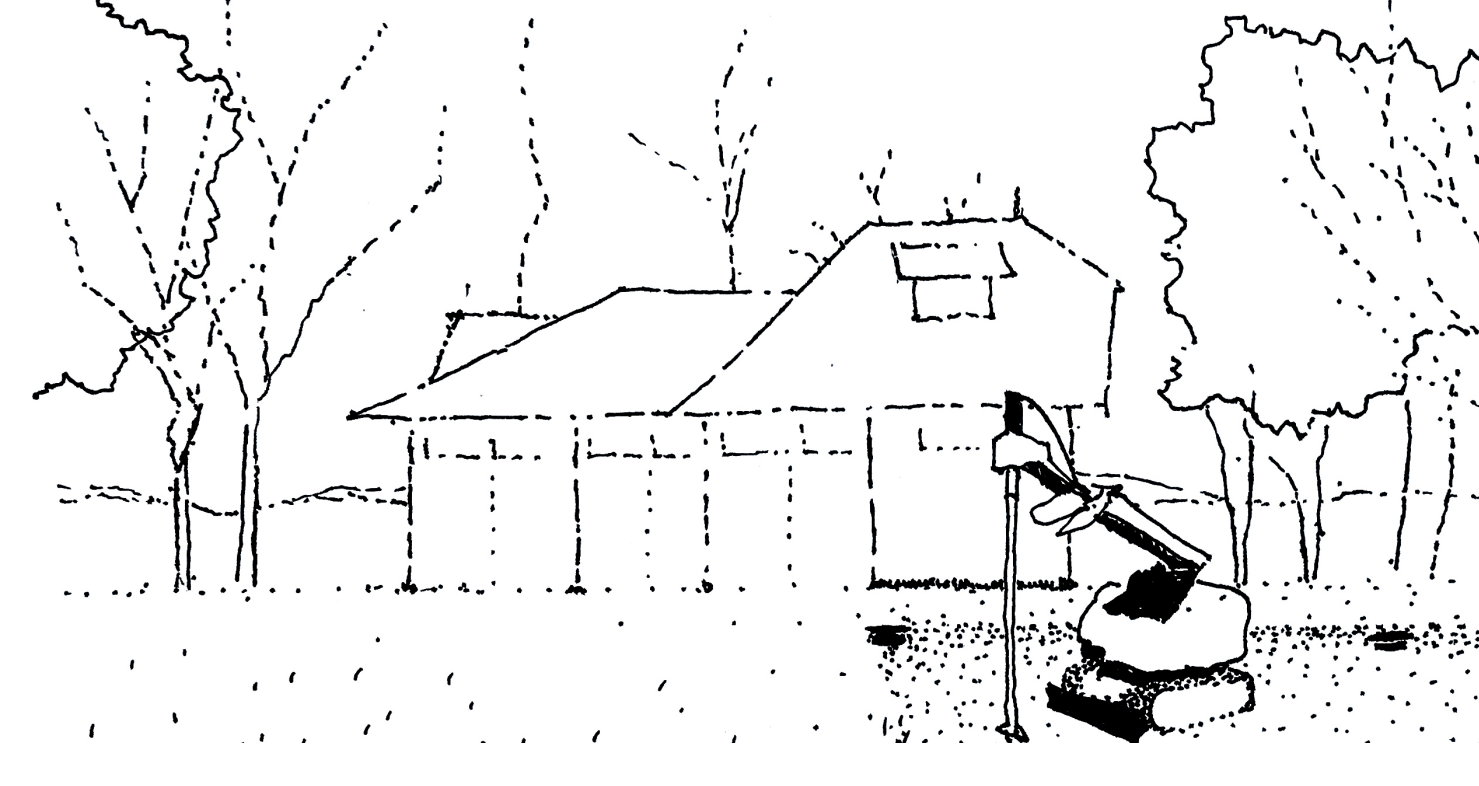
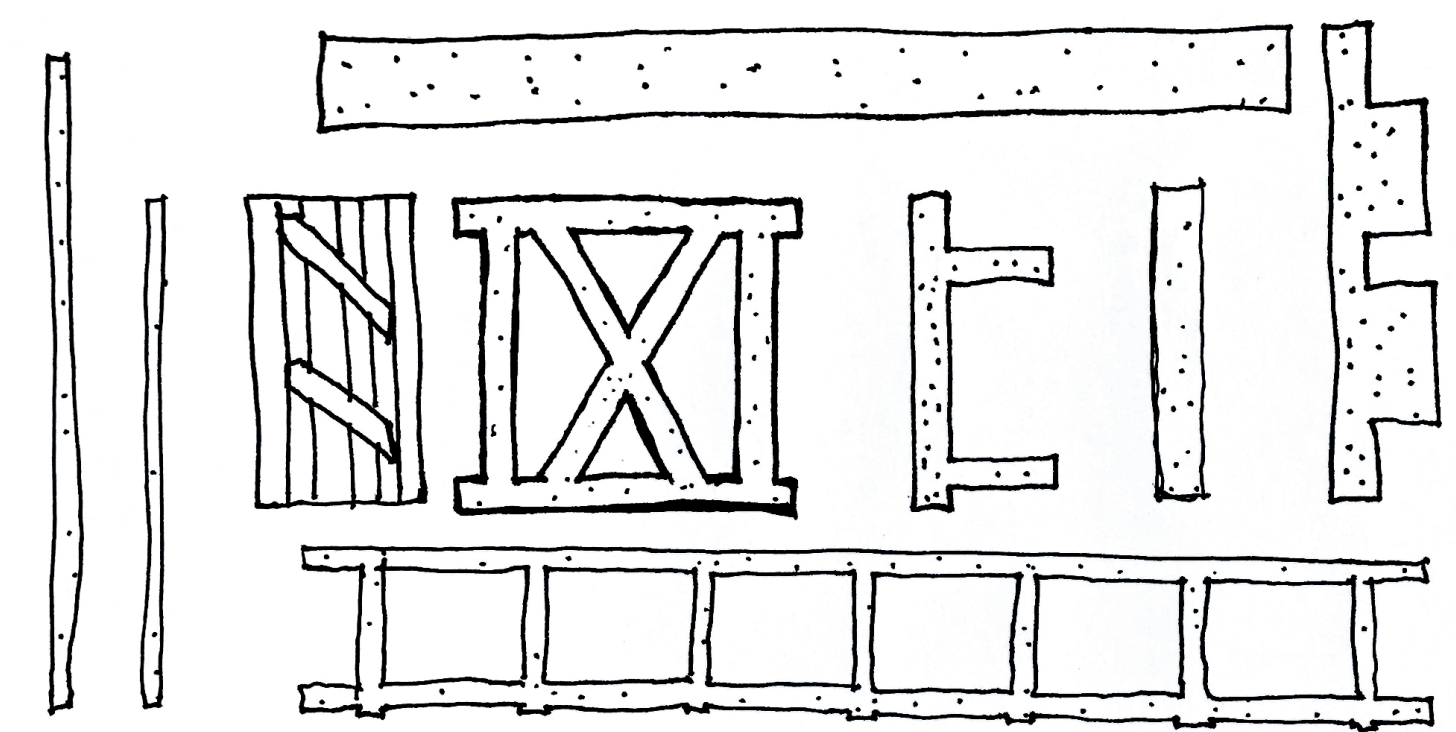


Inventaire des éléments à réemployer.
Nettoyage, sablage, réparation et préfabrication en atelier de L'annexe.

Retrouver l'écriture architecturale. Ici un bardage vertical avec couvre-joint.

Déblais superficiels réemployés pour faire un gradin paysager devant la grange.

Concert surprise de William Sheller le 17 mai. Venez !



0 5 10 15 20

