

Renovation of the Věra Nohelová House in Hustopeče

The project for the restoration and conversion of the Věra Nohelová House on Dukelské Square in Hustopeče represents a sensitive architectural intervention into the city's historic fabric, aiming to create a modern Almond Museum. The main vision of the design lies in the rehabilitation of a valuable burgher house, whose roots date back to the Gothic and late Renaissance periods, and its transformation into a vibrant cultural hub. The complex is conceived as an open and permeable site that newly connects the main square with Na Hradbách Street, thereby shortening pedestrian routes and revitalizing a previously underutilized courtyard.

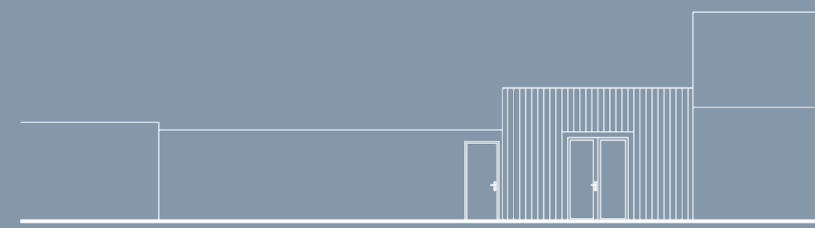
The architectural solution strictly respects the historical stratification of the building, from the Renaissance and Baroque vaults in the interior to the richly decorated Art Nouveau facade. While the street-facing facade undergoes precise heritage restoration, a modern element is inserted into the courtyard area in the form of a new exhibition pavilion, replacing an original low-value garage. The layout of the house is clearly divided into a museum section with a shop and tasting areas, a creative incubator providing accommodation for eleven artists, and versatile exhibition spaces in the new building.

In terms of construction, the project focuses on preserving the original building fabric using traditional methods of remediation and restoration of historic features, such as windows, doors, and cast-iron railings. A key technical detail of the new building is its foundation on deep piles, which was chosen to protect the historic cellars below ground level. The entire complex is designed to be

West Elevation (from Dukelské Square)



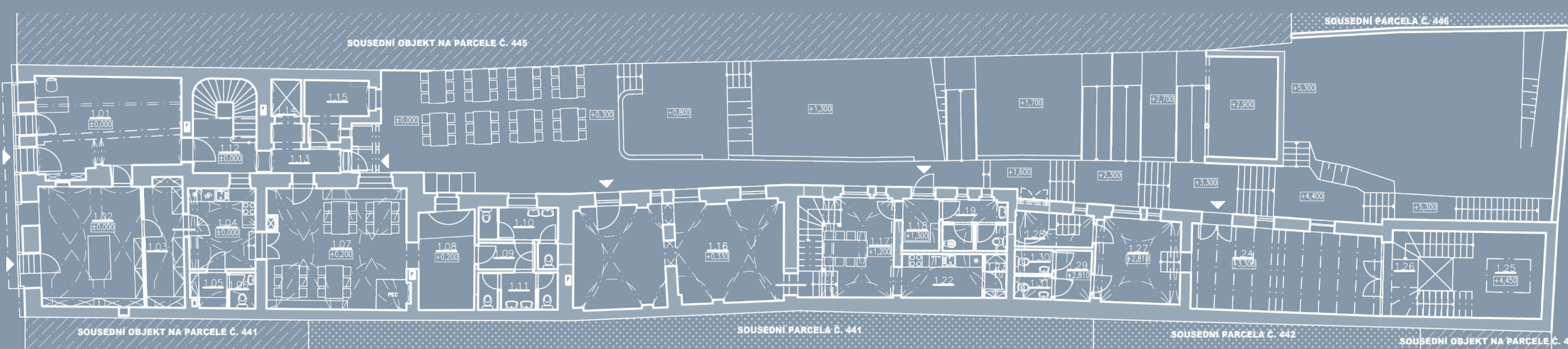
East Elevation (from Na Hradbách Street)



North Elevation (from the courtyard)



Floor plan 1.NP



LEGENDA MATERIÁLŮ

- KONSTRUKCE
- SOUŠEDNÍ PARCELA - ZAHRADA
- SOUŠEDNÍ PARCELA - OBJEKT

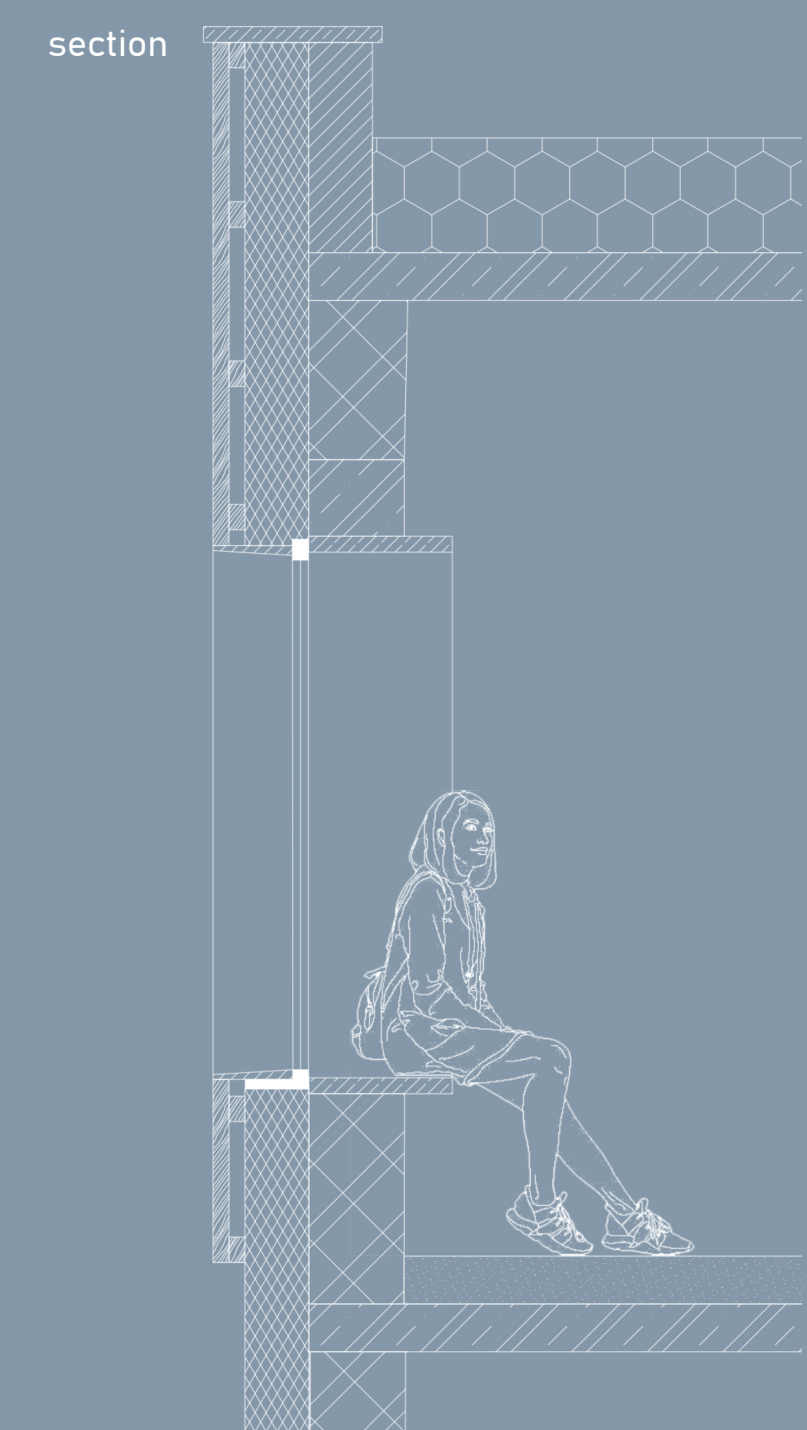


LEGENDA MÍSTNOSTÍ

OZN.	POPIS MÍSTNOSTI	PLOCHA [m ²]	OZN.	POPIS MÍSTNOSTI	PLOCHA [m ²]
101	PRŮJEJKA	29,15	117	JÍDELNA	20,88
102	PRŮJEJKA	25,83	118	ZÁČEVĚŘÍ	2,89
103	SKLAD	12,30	119	UMÝVÁRNA	3,05
104	PŘÍPRAVNA	11,33	120	WC	1,73
105	SÁTNA	2,56	121	OKLID	1,71
106	WC	1,97	122	KUCHYŇ	7,45
107	PROSTORY PRO DEŠŤTACI	24,80	123	SKLAD	2,00
108	VÝPOMŔKOVÁ MÍSTNOST	11,58	124	VÝSTAVNÍ PROSTOR	32,83
109	CHODBA	3,11	125	VÝSTAVNÍ PROSTOR	14,24
110	WC ŽENY	4,58	126	CHODBA - SCHODIŠTĚ	13,13
111	WC MUŽI	4,20	127	VÝSTAVNÍ PROSTOR	14,50
112	CHODBA + SCHODIŠTĚ	12,33	128	SKLAD	9,91
113	CHODBA	5,13	129	PŘEDSÍŇ	3,72
114	VITANÍ	2,27	130	WC ŽENY	1,92
115	SKLAD	4,54	131	WC MUŽI	1,91
116	ATELIERY	43,97		CELKOVÁ UŽITÁ PLOCHA	341,41

Architectural detail

window with a seat in the new structure



floor plan

