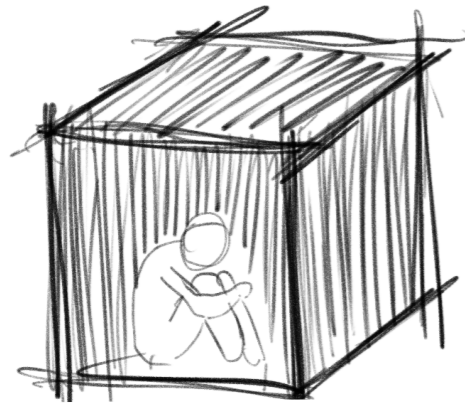


NUR HOUSE

A RETREAT FROM EVERITHING

# Project Philosophy: The Cube Retreat



1. The Closed Cube (Isolation)

We live in a world filled with heavy burdens, stress, and endless problems that weigh us down daily. When this pressure becomes overwhelming, we as human beings instinctively isolate ourselves, shutting down inside (like this dark cube) to protect ourselves and find a moment to stop.



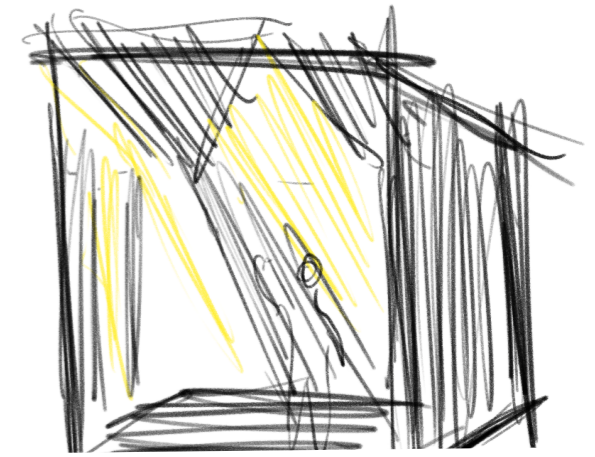
2. The Infiltration

Within isolation, the human spirit begins to seek a way out and untangle the knots of its problems. The first narrow fractures in the library corner symbolize the opening of the mind, reflection through knowledge, and the very beginning of the internal healing process.



3. Nur / The Light of Salvation

When we surrender our problems to a higher power, a powerful vertical light breaks through the roof (the skylight)—representing Nur (The Divine Light). The Nur of God descends directly upon the person to show them they are never alone. It is the ultimate spiritual support that unloads every burden of this world, filling the soul with pure hope.



4. Spiritual Peace

The closed cube no longer exists; it has been completely dissolved by the light. The dynamic play of light and shadow along the stairs shows that the individual is now ascending, liberated and in perfect peace with themselves and God. The weight of the world is gone, leaving behind a pure, sacred space.

## Concept

NUR is an Arabic word meaning divine light — not physical, but presence. In Islamic tradition, light is not decoration. It is a manifestation of something greater. This project takes that idea literally.

### The Form

A concrete cube. 8×8 meters, 7.0 meters tall. From the outside — completely closed. No windows. No openings. Four massive walls of raw concrete, silent and monolithic. The exterior reveals nothing. The interior reveals everything.

### The Program

NUR is a retreat house for one person — an artist, a writer, a thinker exhausted by the modern world. A place to stay for 7 to 14 days. No internet. No noise. Only light, rain, fire and silence.

Ground floor (4.0m): open thermal bath, minimal kitchen, fireplace, bathroom.

Upper floor (3.00m): bedroom, private bathroom.

### The Light

The only source of light is the sky. The central atrium is fully open — rain falls in, snow falls in, stars are visible at night. Light enters vertically, unfiltered, directly onto water and bare concrete. In the morning it is soft. At midday it falls straight down onto the thermal bath. In the evening it disappears, and the fireplace takes over.

Four qualities of light define four experiences:

Zenithal — connection to the sky

Linear — focus and direction

Reflected — movement on water

Diffused — warmth and rest

### The Experience

You enter through a narrow door into darkness. You cannot see the pool. You cannot see the sky. You move through shadow. Then the atrium opens above you — and light falls in.

This sequence — darkness to light — is the architecture.

### Materials

Raw board-formed concrete. Dark wood. Water. Fire.

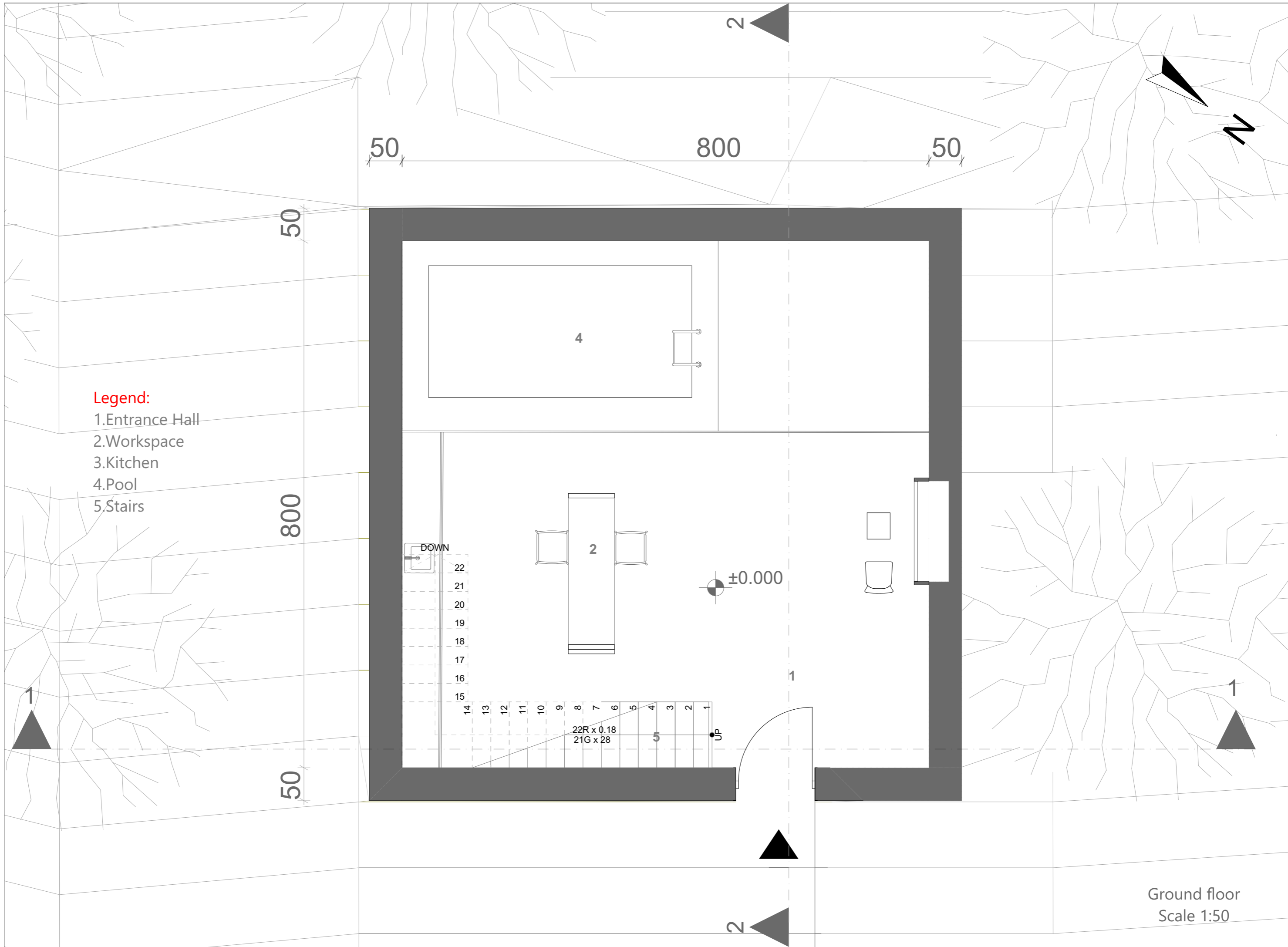
Nothing else.



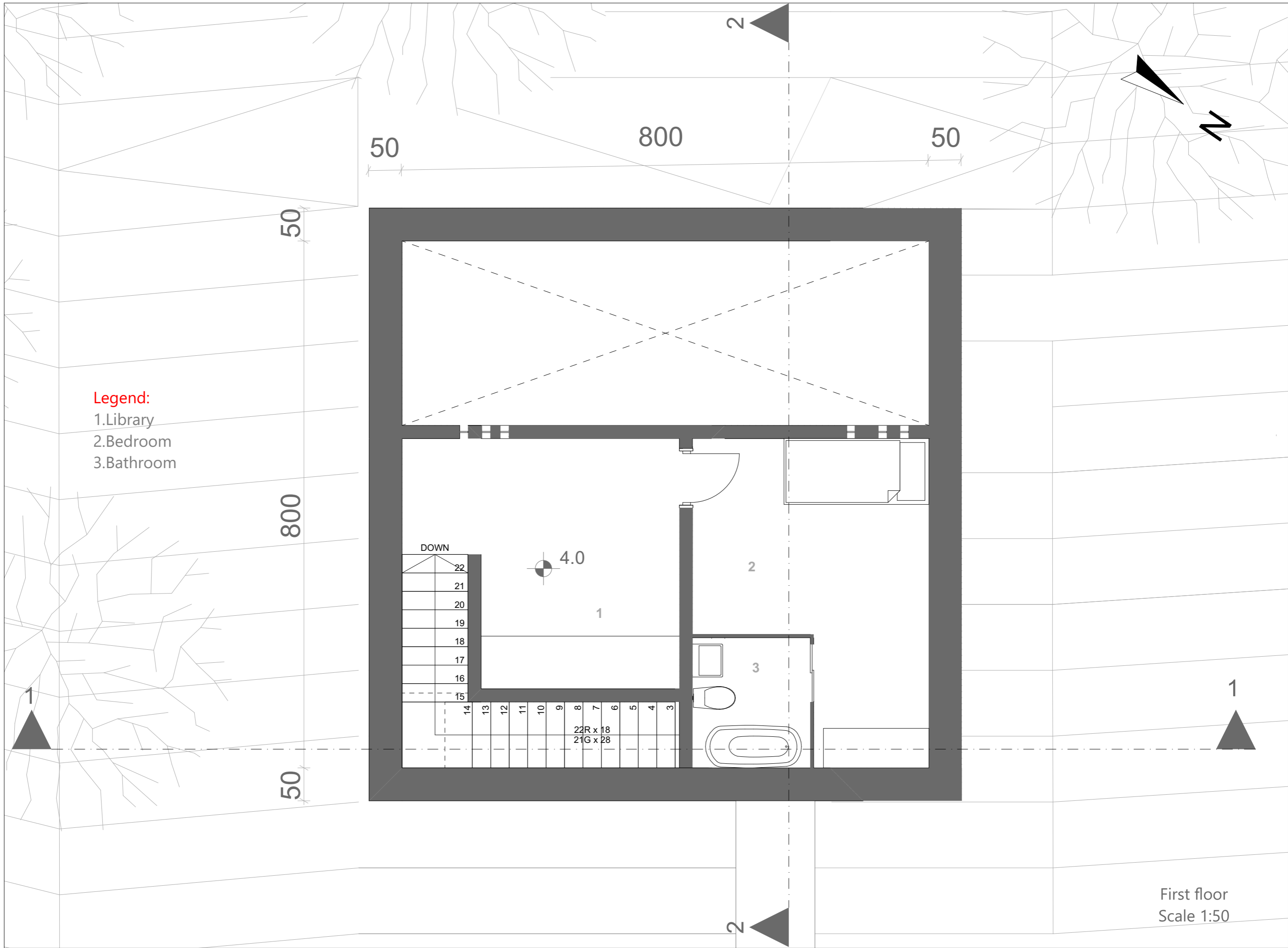
NUR HOUSE

**Legend:**

- 1. Entrance Hall
- 2. Workspace
- 3. Kitchen
- 4. Pool
- 5. Stairs



Ground floor  
Scale 1:50



- Legend:**
- 1. Library
  - 2. Bedroom
  - 3. Bathroom

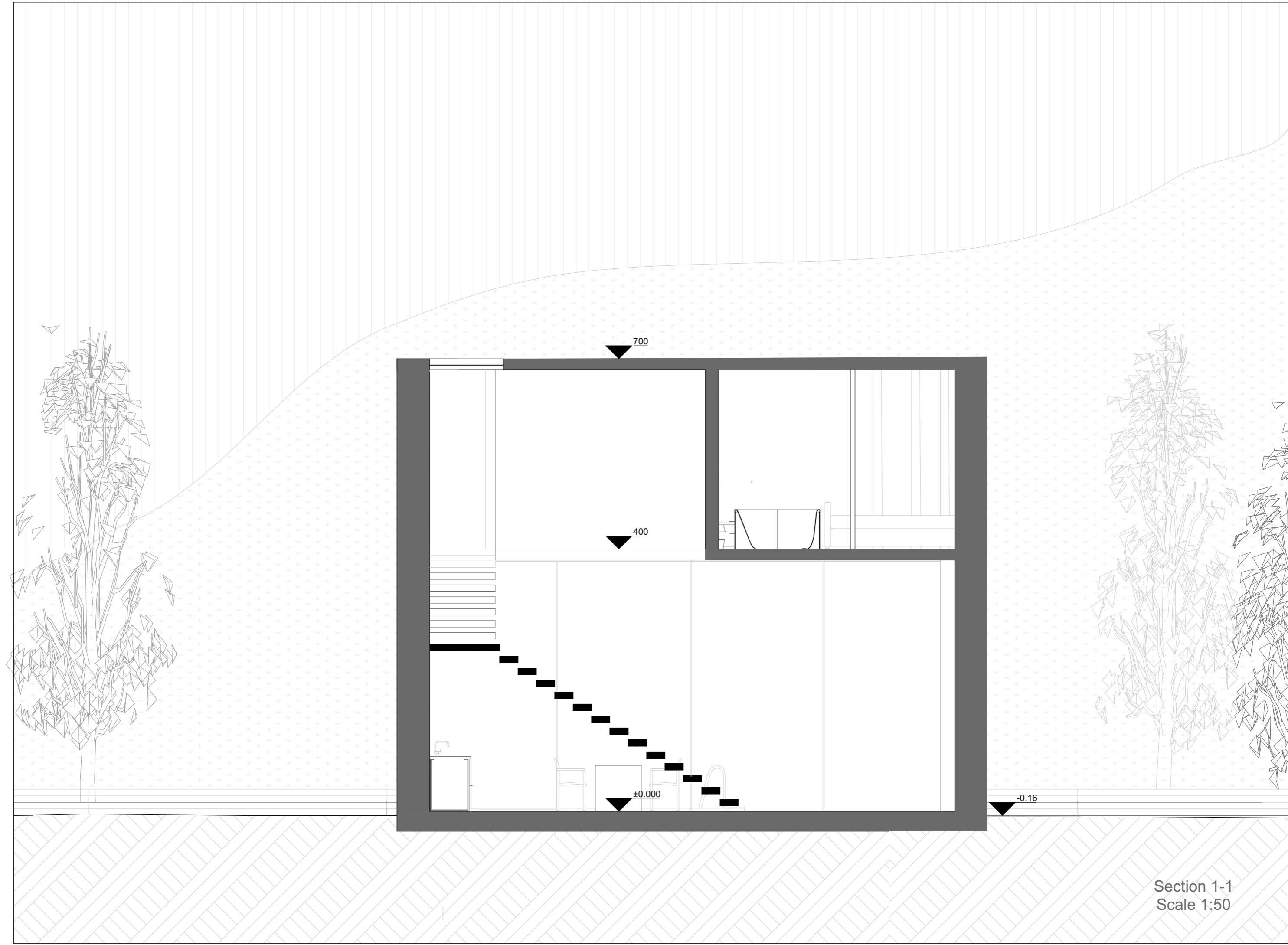
DOWN

22
21
20
19
18
17
16
15
14
13
12
11
10
9
8
7
6
5
4
3

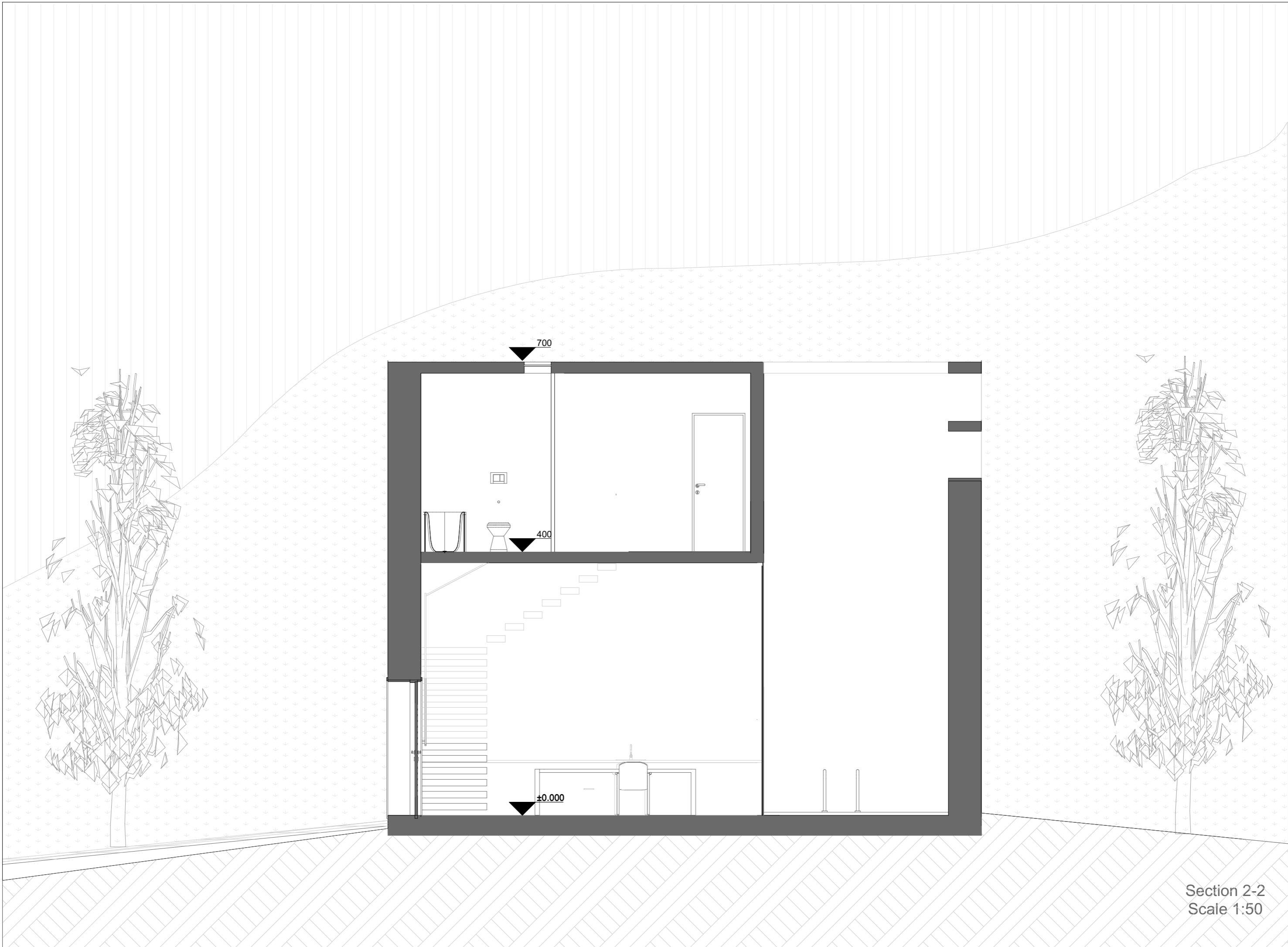
4.0

22R x 18  
21G x 28

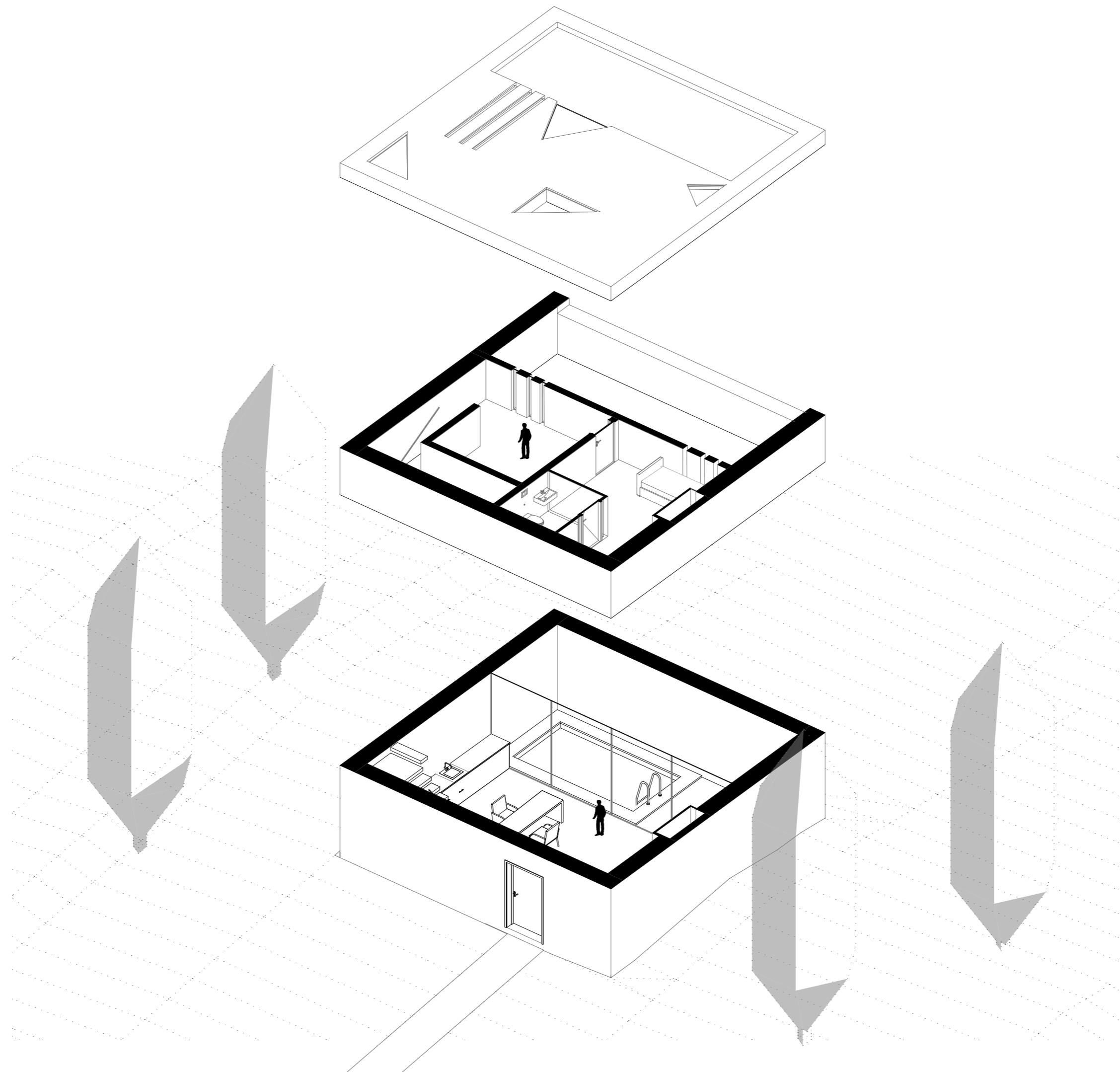
First floor  
Scale 1:50



Section 1-1  
Scale 1:50



Section 2-2  
Scale 1:50



Axonometric  
scale 1:100





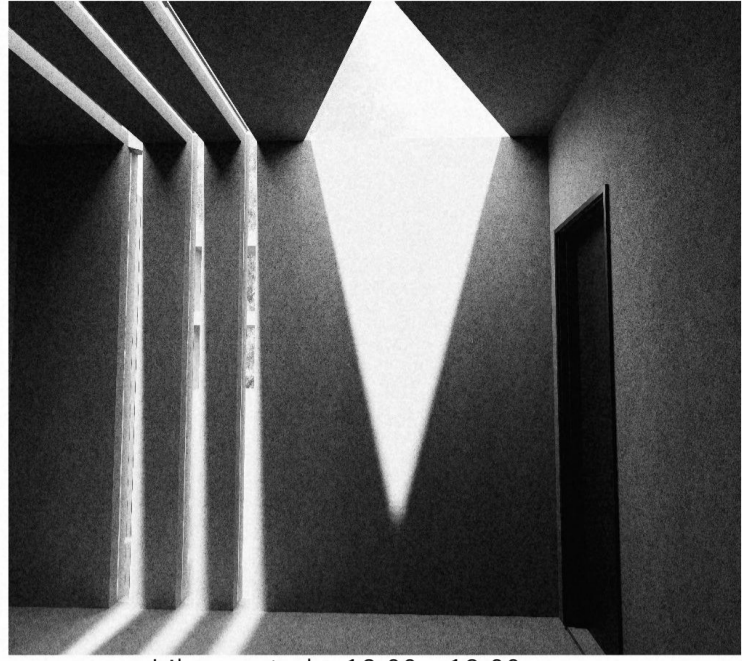








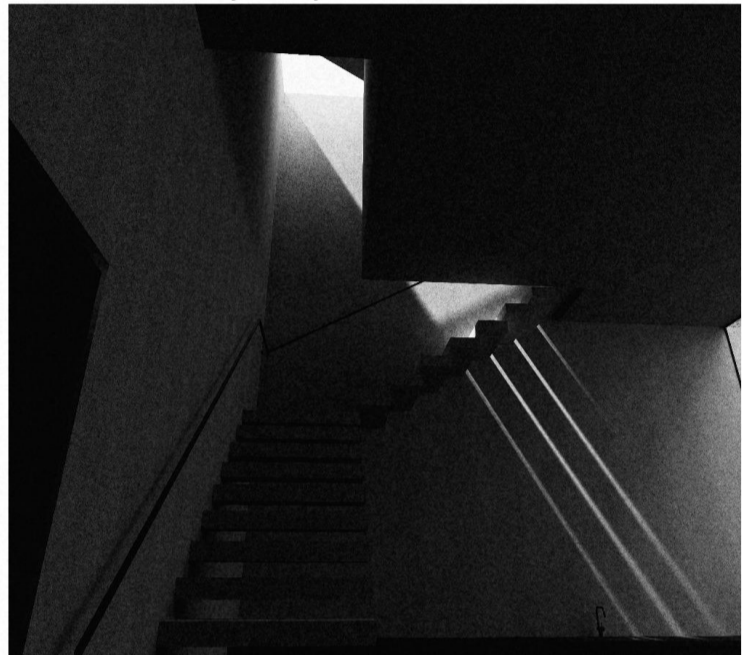
Temporal light



Library study 12:00 - 13:00



Light infiltration 14:30 - 15:00



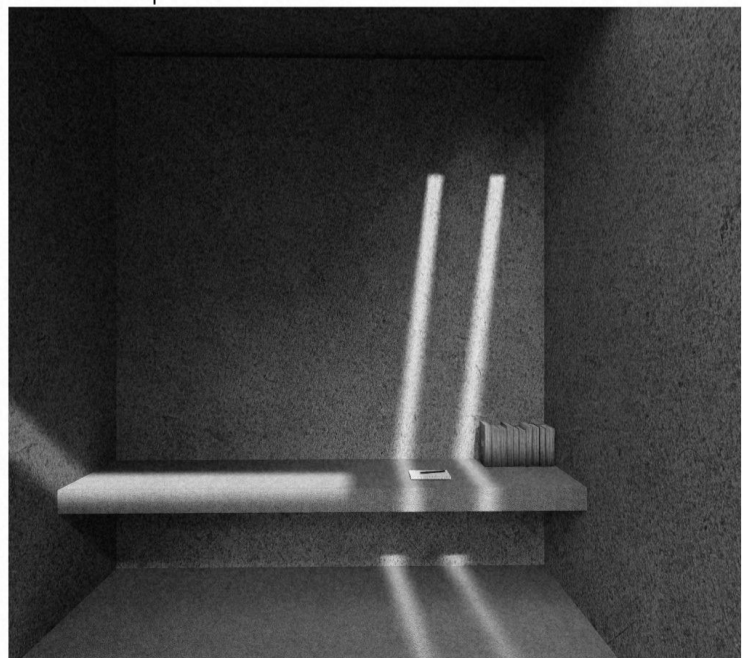
Divine light 13:00



Vertical path 15:30 - 16:00.



Temporal light 07:30 - 09:00



Ascension 12:00 - 13:00