

Conservation Center for Endemic Species

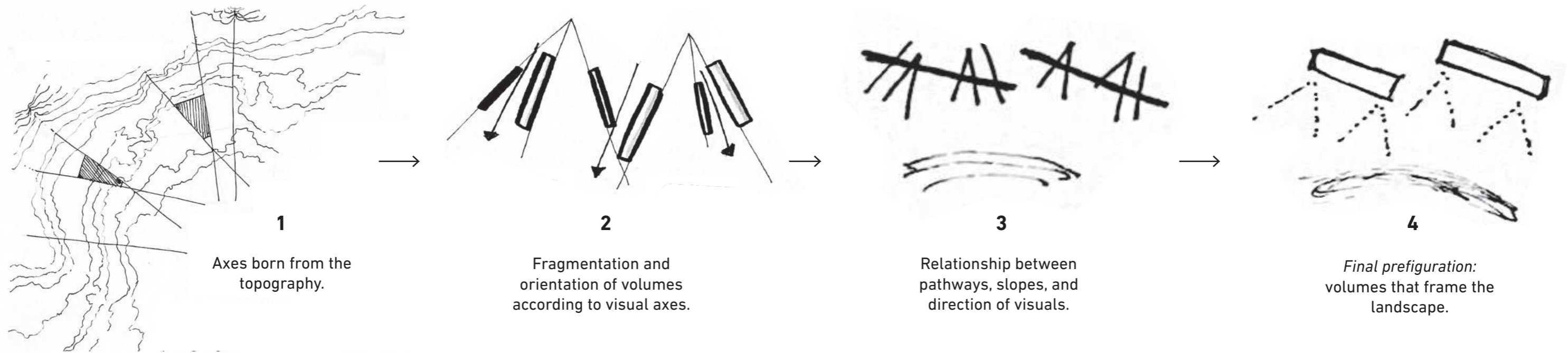
A threshold between city, landscape, and ecological conservation

The project proposes a center dedicated to the conservation and research of endemic species of the Lomas de Lúcumo. The architecture adapts to the natural elevations of the terrain, minimizing the impact on the hill and strengthening the relationship between city and nature.

The proposal integrates rainwater and fog harvesting strategies, as well as conservation platforms linked to the landscape. Through pathways and spaces for contemplation, the project articulates conservation, research, and territory.



First approaches



1
Axes born from the topography.

2
Fragmentation and orientation of volumes according to visual axes.

3
Relationship between pathways, slopes, and direction of visuals.

4
Final prefiguration: volumes that frame the landscape.

Site Placement

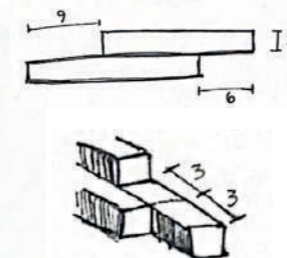
How does architecture emerge from a hill?

The architecture **emerges from the hill based on the topography**, using the slope as an **organizing element of the project**. The volumes are implanted following the natural curves of the terrain, **reducing the impact on the landscape and integrating into the ecosystem of the Lomas de Lúcumo**.

Rather than resting on the hill, the project slides between its elevations to build a **transition between nature and city**. The fragmentation of the volumes generates **pathways, openings, and visuals towards the landscape**, integrating conservation, contemplation, and territory.

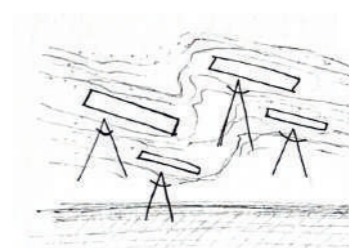
Estrategias de diseño

3-METER MODULATION



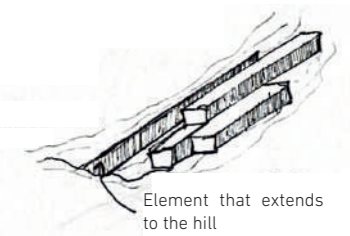
The proposal is organized through a repetitive structural modulation of 3 meters, adapting to the slope of the terrain.

INCLINED VOLUMES FOR VISUAL OPENING

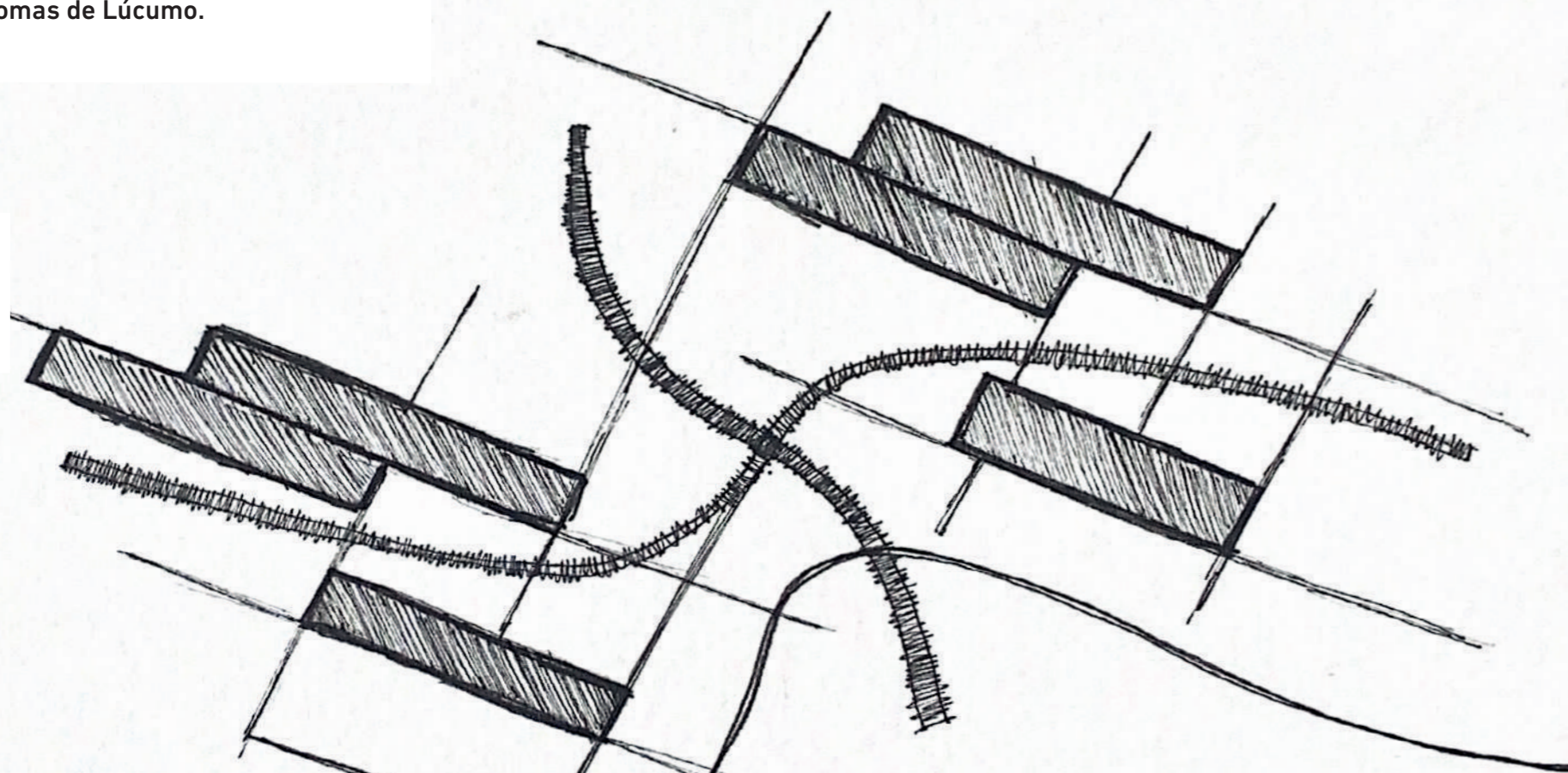


The volumes are inclined and fragmented to orient visuals towards the hill and the city.

INSERTING THE VOLUMES INTO THE TOPOGRAPHY

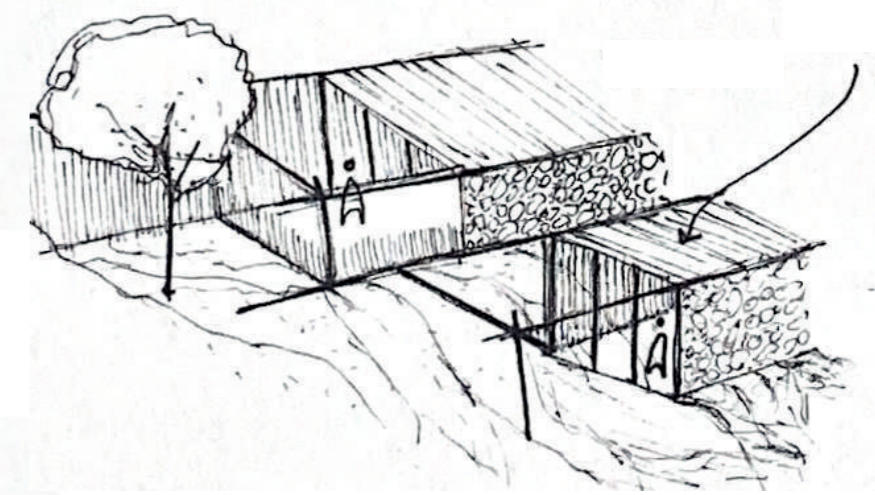


The architectural bodies are inserted into the slope to integrate into the natural topography.



INTENTION DIAGRAM

The scheme defines axes, entrances, and pathways based on the topography, organizing the shape of the project according to the hill.



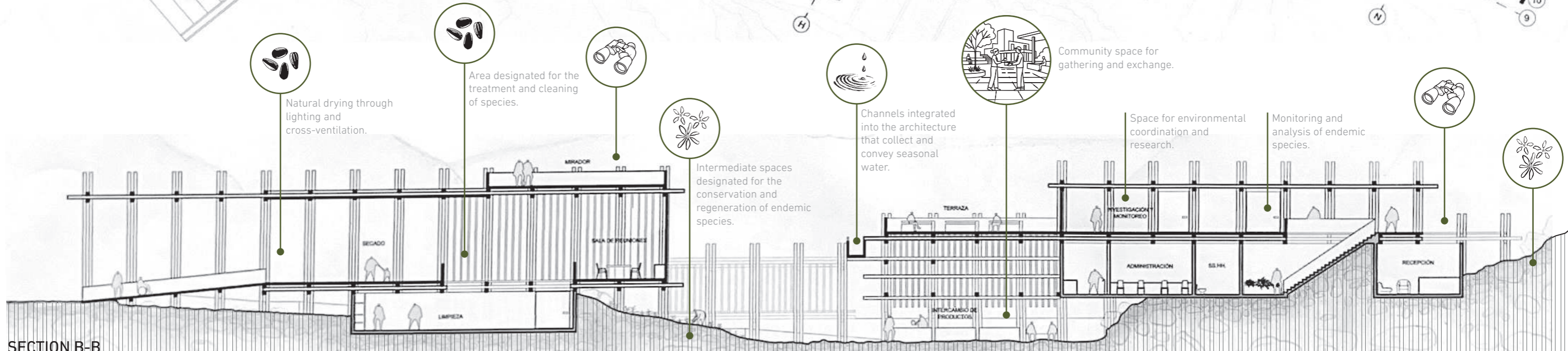
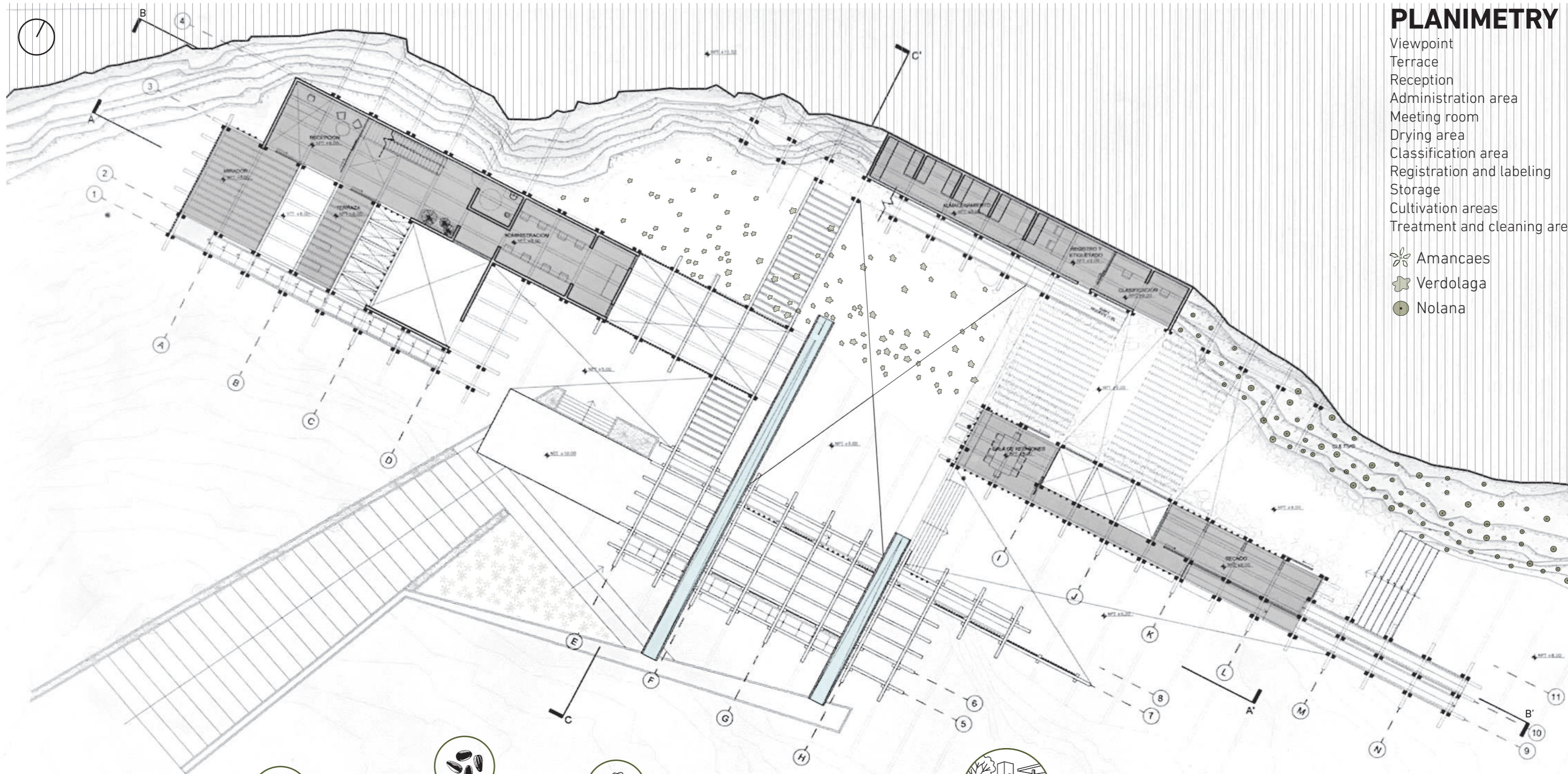
VISUAL CONNECTION WITH THE EXTERIOR

The openings and orientations of the volumes allow maintaining a constant relationship with the landscape, reinforcing the experience of contemplation and movement.

PLANIMETRY

- Viewpoint
- Terrace
- Reception
- Administration area
- Meeting room
- Drying area
- Classification area
- Registration and labeling
- Storage
- Cultivation areas
- Treatment and cleaning area

-  Amancaes
-  Verdolaga
-  Nolana



SECTION B-B