



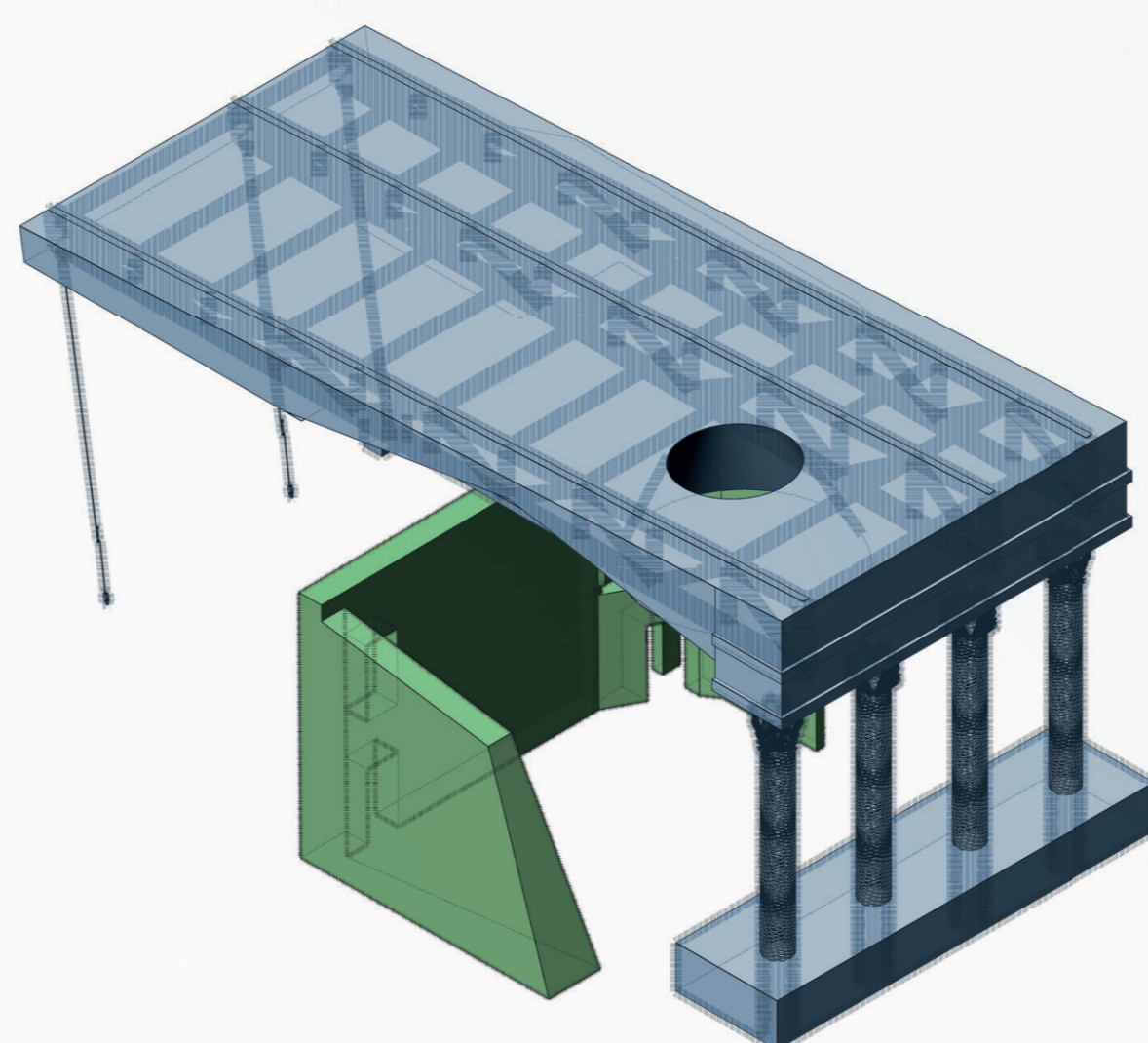
1: The system of public works of a country, state, or region

• **Domestic Infrastructures in the Pavlov's House**

1: living near or about human habitations
2: of, relating to, or originating within a country and especially one's own country



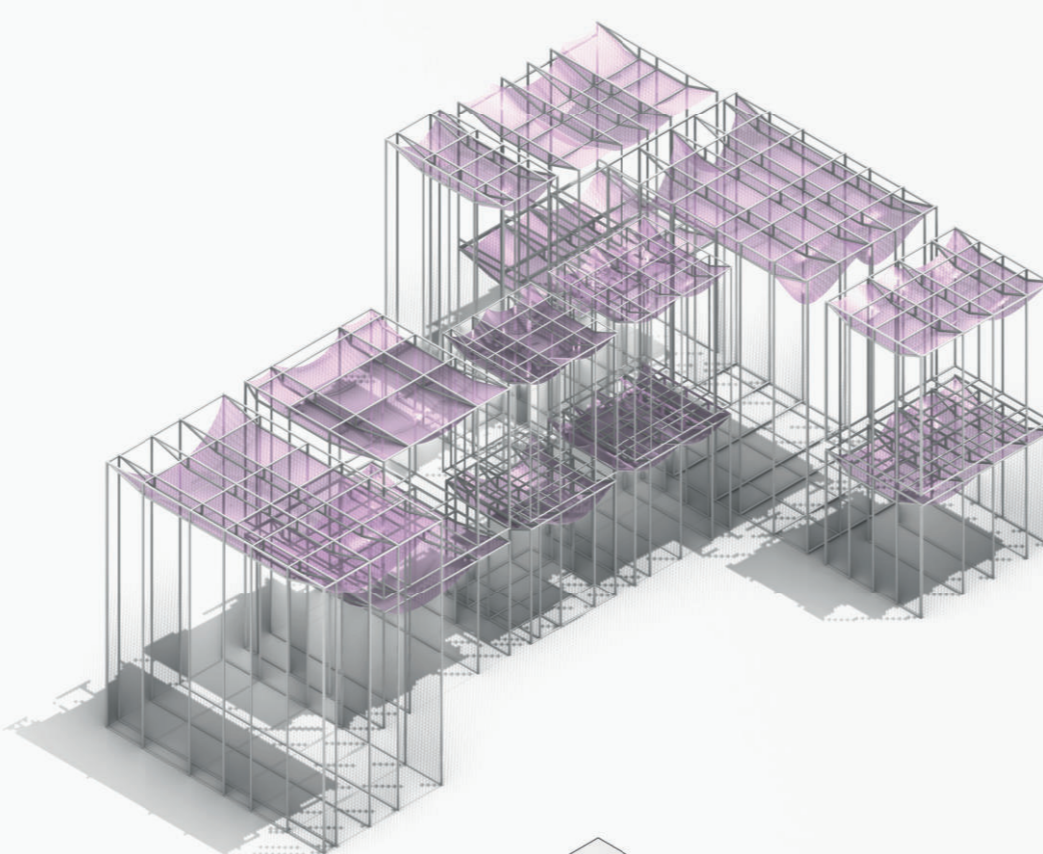
PROTECT/



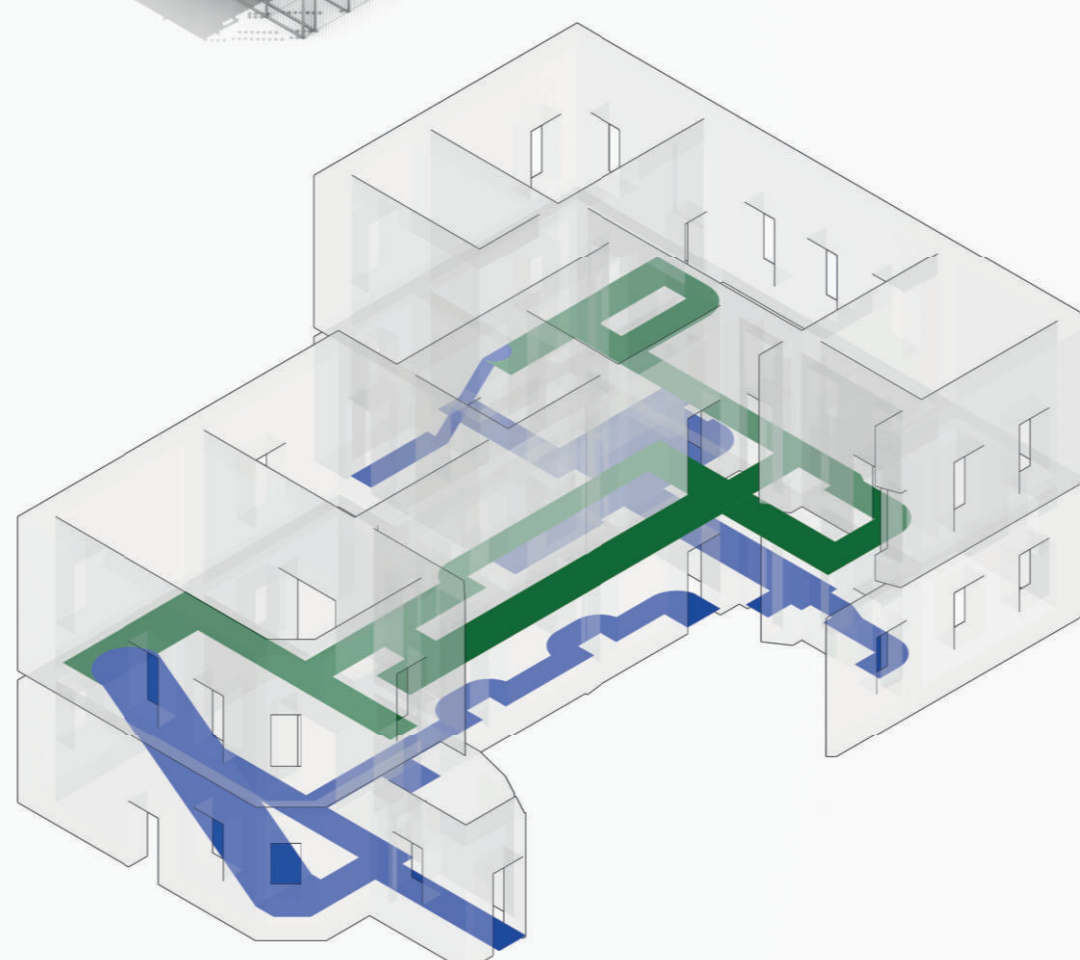
The new roof as well as the main containment for the structure serves the purpose of protecting the structure for it's future use.

In order to inhabit Pavlov's house a decorative as well as purposeful secondary structure must be implemented. The steel-frame boxes bring a modern aesthetic to the interior design of the building.

INHABIT/



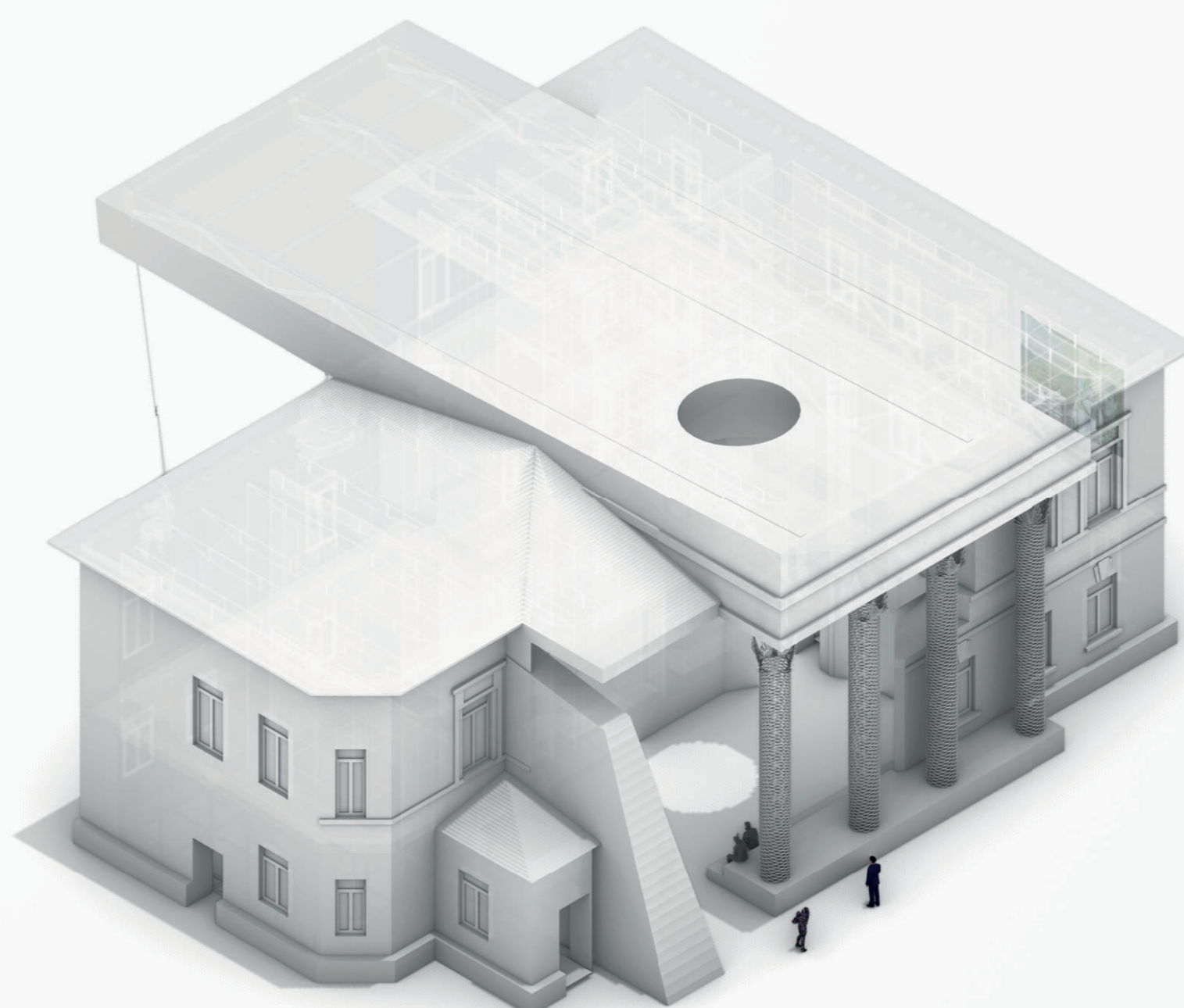
COMUNICATE/



Connections are established inside the building. These traverse the inside as well as the outside of the building. They have the purpose not only to connect the spaces, but also to distribute the space alongside them.

The main focus of the building is to attract looks in the city of Kharkiv. It will act as a landmark, a stopping zone for all and any who are willing to distract its mind.

ATTRACT/



REMEMBER/



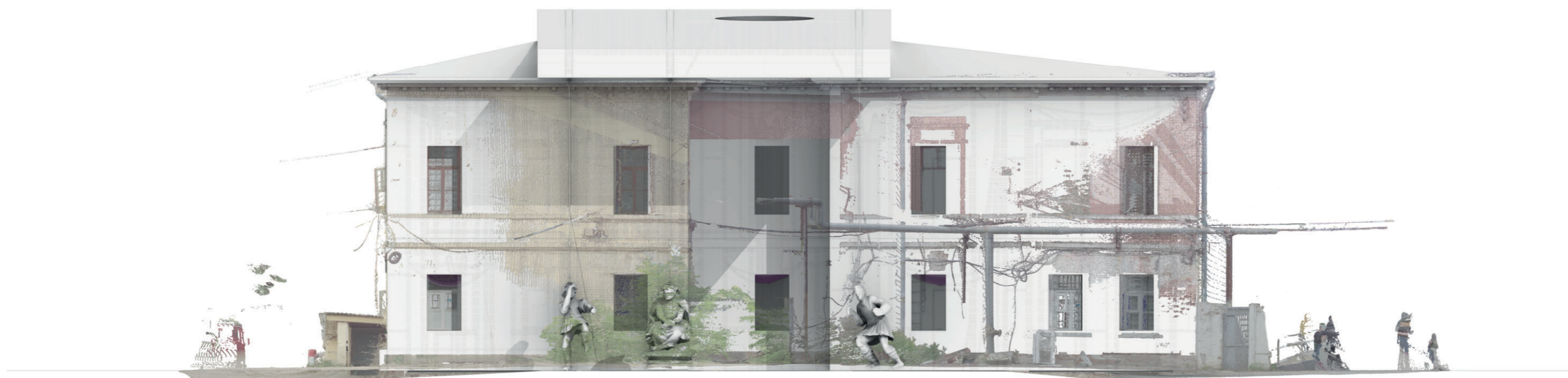
We come from a crude reality, a destructed past, in this work we will look to the future.



EAST SIDE ELEVATION
Connection with the plaza



WEST SIDE ELEVATION
Remember the past and gives a glance into the future.



SOUTH ELEVATION
Entrance to the gallery space presided by replicas of statues from the Boim Chapel in Lviv sculptures by Jan Pfister.

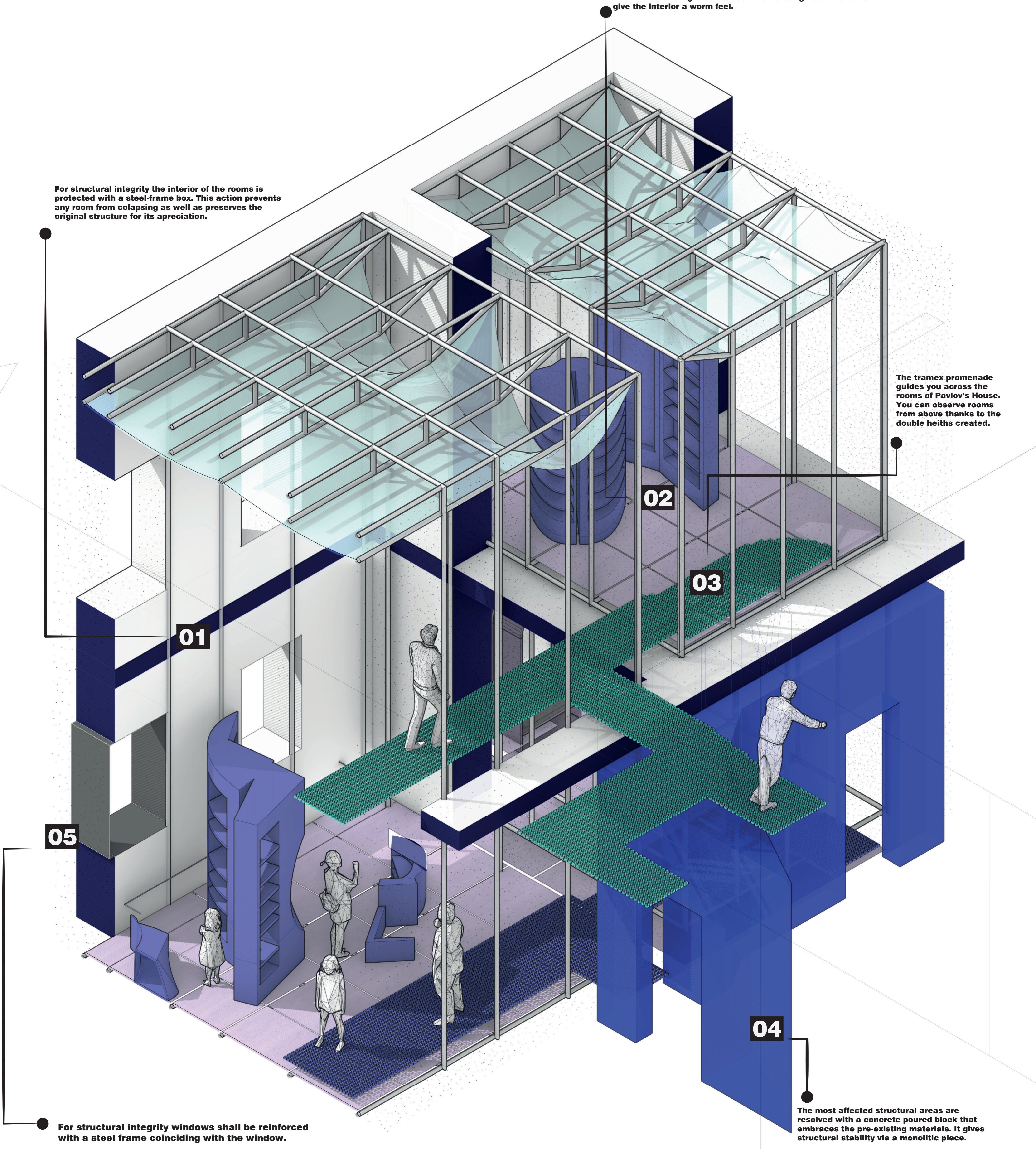


NORTH ELEVATION /
Frontal and main entrance to the new and reconstructed Pavlov's House

The floor plan design is free, open and mobile. A wood deck is installed coinciding with the steel frame box guides in order to give the interior a warm feel.

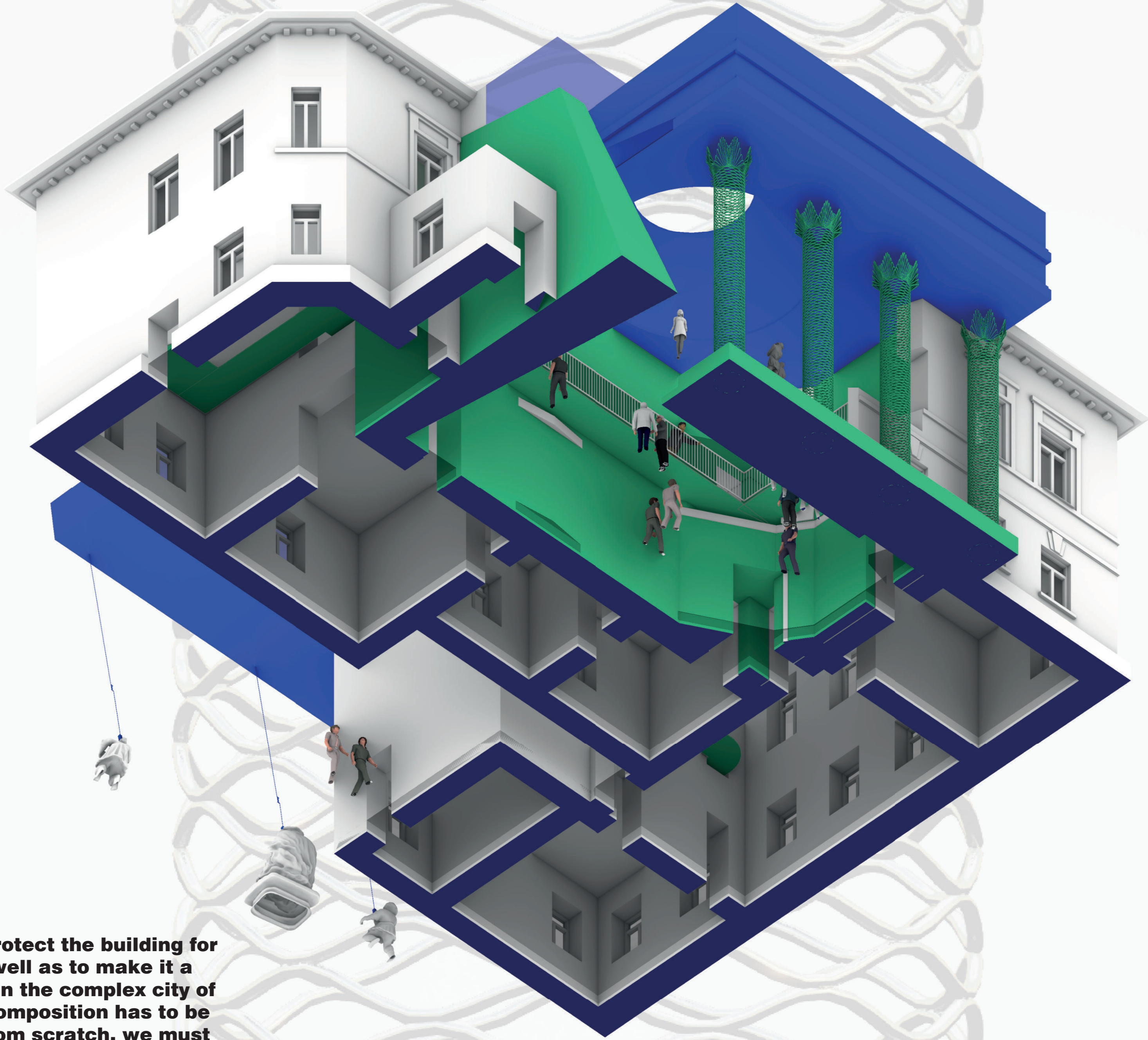
For structural integrity the interior of the rooms is protected with a steel-frame box. This action prevents any room from collapsing as well as preserves the original structure for its appreciation.

The tramex promenade guides you across the rooms of Pavlov's House. You can observe rooms from above thanks to the double heights created.



For structural integrity windows shall be reinforced with a steel frame coinciding with the window.

The most affected structural areas are resolved with a concrete poured block that embraces the pre-existing materials. It gives structural stability via a monolithic piece.



In order to protect the building for its new use as well as to make it a great landmark in the complex city of Kharkiv a new composition has to be made, but not from scratch, we must adore what came before so we can see the future.



ROOF

The piece of the roof is planned carefully. First a sky-light in remembrance of what happened. Then a tensile structure directed to support all of the weight of the memories.

Then it must come to the ground through the Atrium.



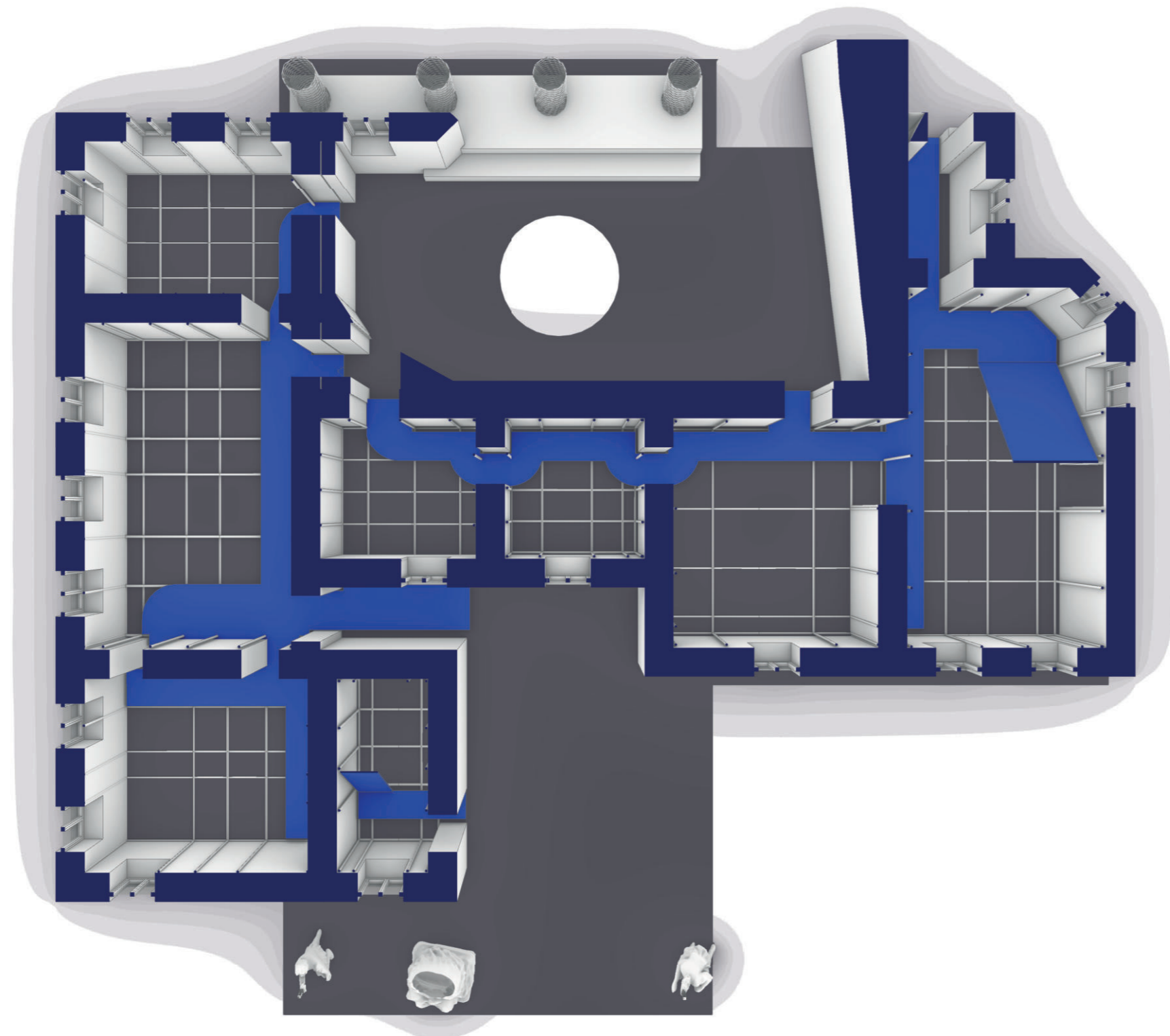
ATRIUM

Main structural reinforcement, also destined to support the roof in its place. New columns are erected directing us to a new future, the one that we build.



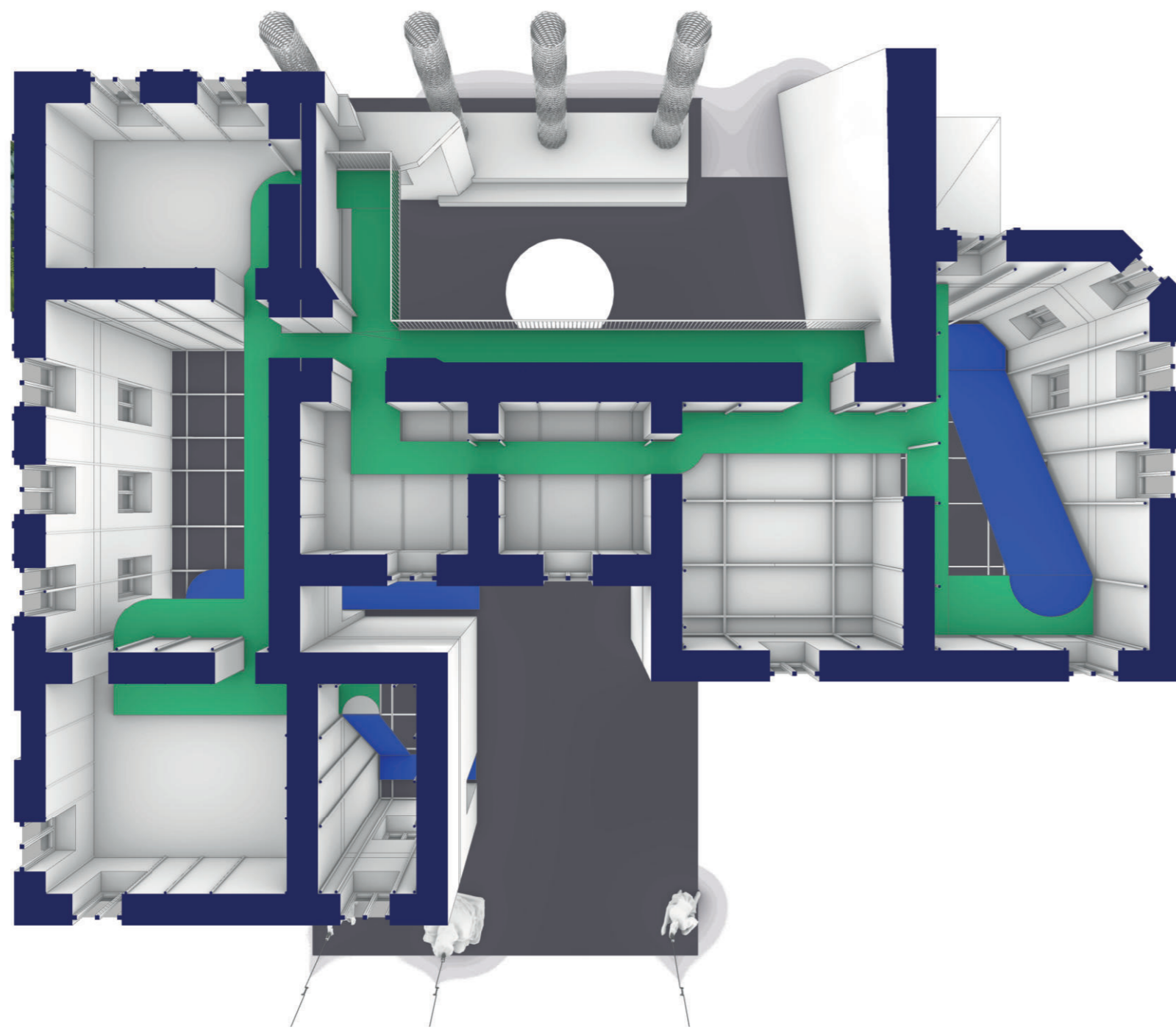
BELONGING

Pavlov's house must hold the container of the future for the city of Kharkiv. Pavlov's House is the new beginning.



First Floor Layout

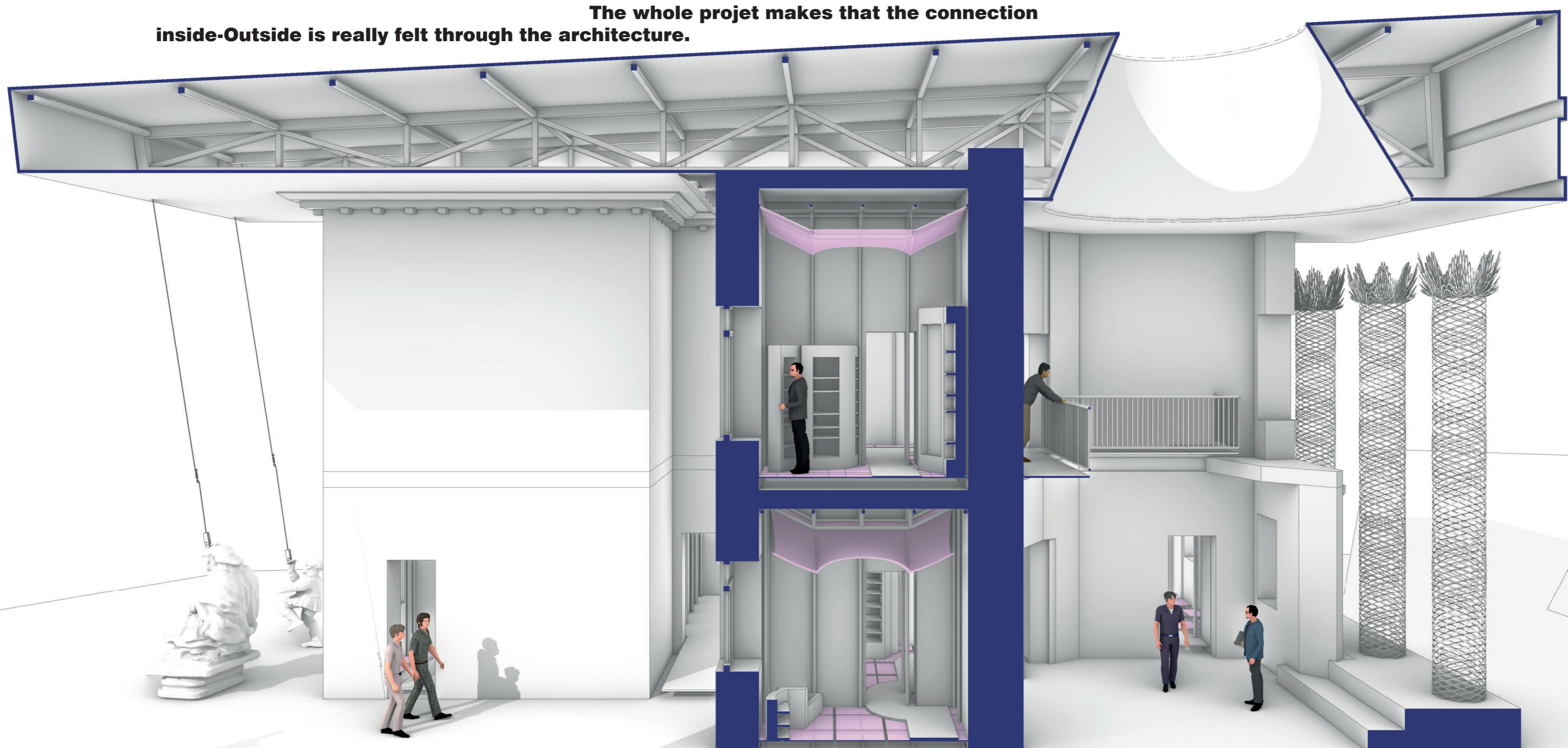
The first floor serves as an introduction to the building. From both sides you can approach and enter the variety of spaces designed. In comparison to the old Pavlov's House this distribution offers bigger spaces, interconnected functions as well as a grand variety of Domesticities that can fit through the walls.



Second Floor Layout

In The second floor layout the essence of the project shines. Four double heights appear making out of the space a monumental and grandiose presence. You can admire the floors below you as well as travel through the space with ease.

The whole projet makes that the connection inside-Outside is really felt through the architecture.



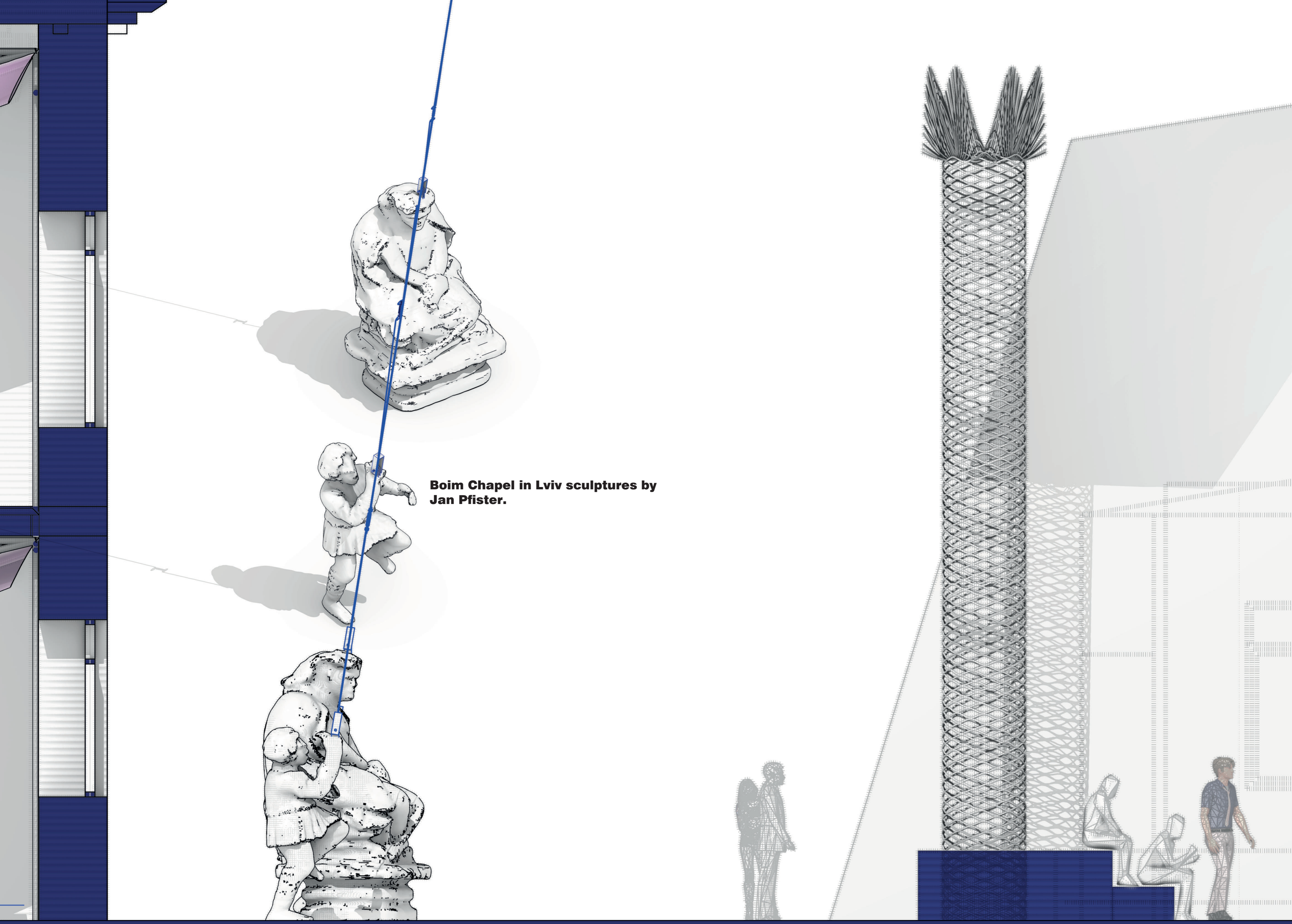
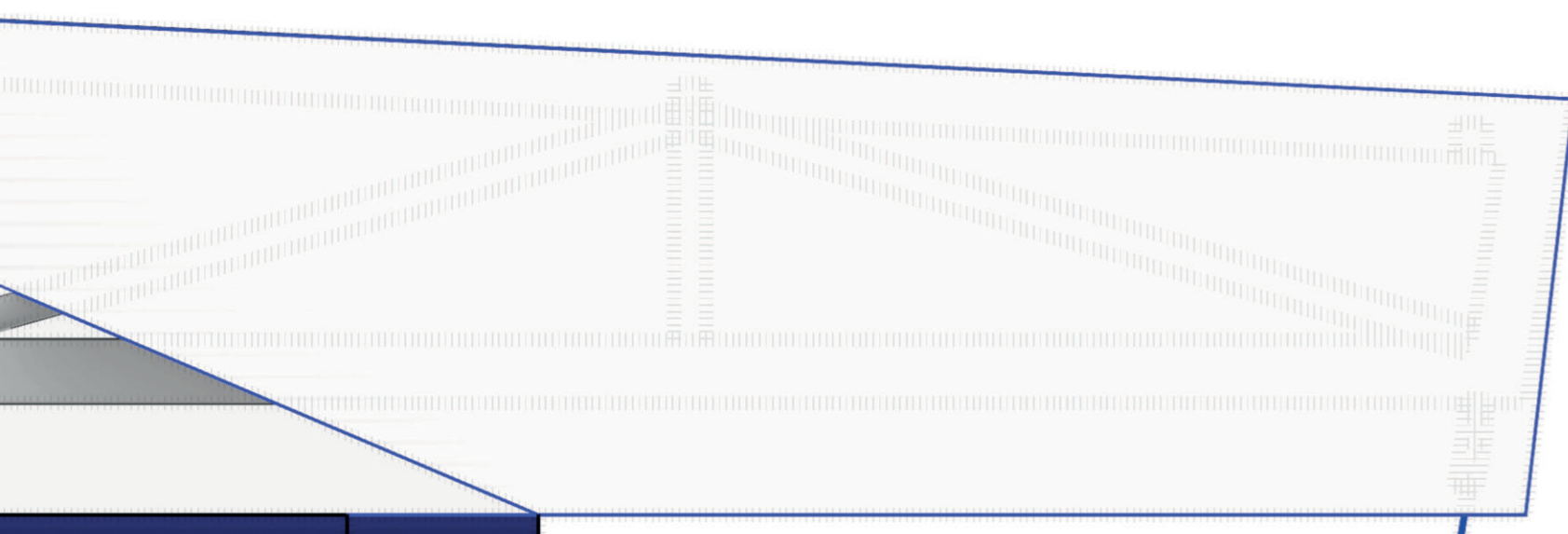
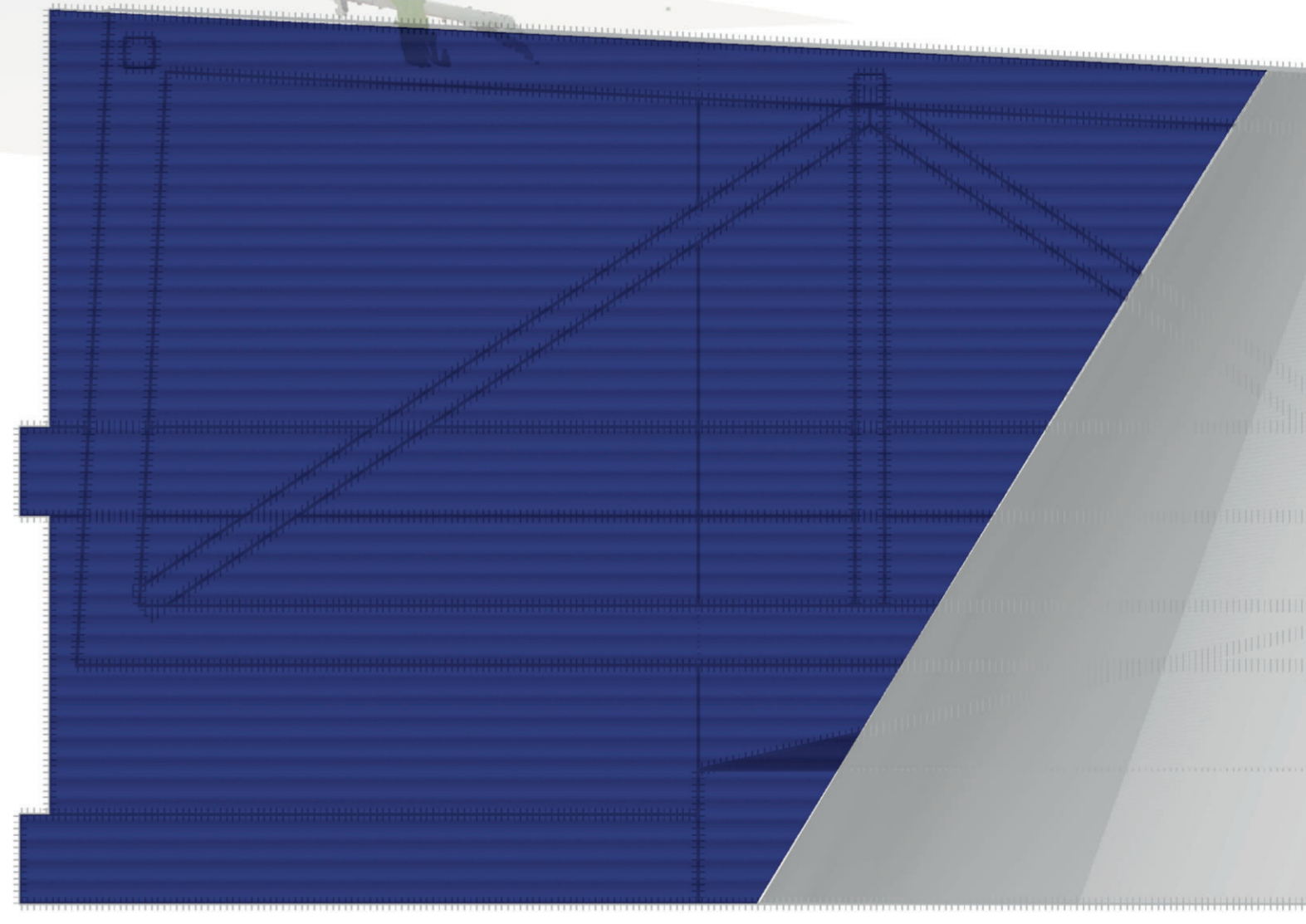
Domestic Infrastructures

This project aims to rethink the meanings of culture heritage in cruel times.

How can we remember culture?
In which way we can feel belonging to our land?



KHARKIV



Boim Chapel in Lviv sculptures by Jan Pfister.