

CHILDHOOD IN CAMPOS ELÍSEOS

An architectural rendering of a modern building with a courtyard. The building features a white facade with large windows and balconies. The balconies are decorated with vibrant, multi-colored vertical slats in shades of red, orange, yellow, green, blue, and purple. The courtyard is paved with light-colored stone tiles and includes a central area with a climbing wall. A young boy in a yellow shirt is riding a yellow scooter in the foreground. Two women are sitting on a dark wooden bench on the right. In the background, other people are walking and playing. The scene is set in a lush, green environment with trees and bushes. The sky is bright and clear.

SPACE FOR CHILDHOOD AND
COMMUNITY INTERACTION

CHILDHOOD IN CAMPOS ELÍSEOS

CHILDREN'S LIFE IN CAMPOS ELÍSEOS

- Exposure to violence, pollution, and the lack of safe public spaces.
- Need for play, social interaction, and safe exploration of the urban environment.
- Lifestyle: Children use streets, squares, and alleys as extensions of their homes, exploring and appropriating public spaces for everyday activities and social interaction.

TOXIC STRESS IN CHILDHOOD

- Results from prolonged exposure to adverse conditions, such as violence, neglect, and environments lacking adequate stimulation.
- Negatively affects emotional, social, and cognitive development.
- Designing to reduce toxic stress means creating safe, green, playful spaces that are strongly connected to the local community.

CHILDREN ARE INHERENTLY VULNERABLE IN THE URBAN ENVIRONMENT, WHERE NARROW SIDEWALKS, LONG STREETS, AND HIGH-SPEED TRAFFIC COMPROMISE THEIR SAFETY AND INDEPENDENT MOBILITY.

A CITY DESIGNED FOR CHILDREN IS A CITY THAT WELCOMES, PROTECTS, AND INSPIRES EVERYONE.

CHILDREN LIVE IN SPACES THAT WERE NOT DESIGNED WITH THEIR NEEDS IN MIND.

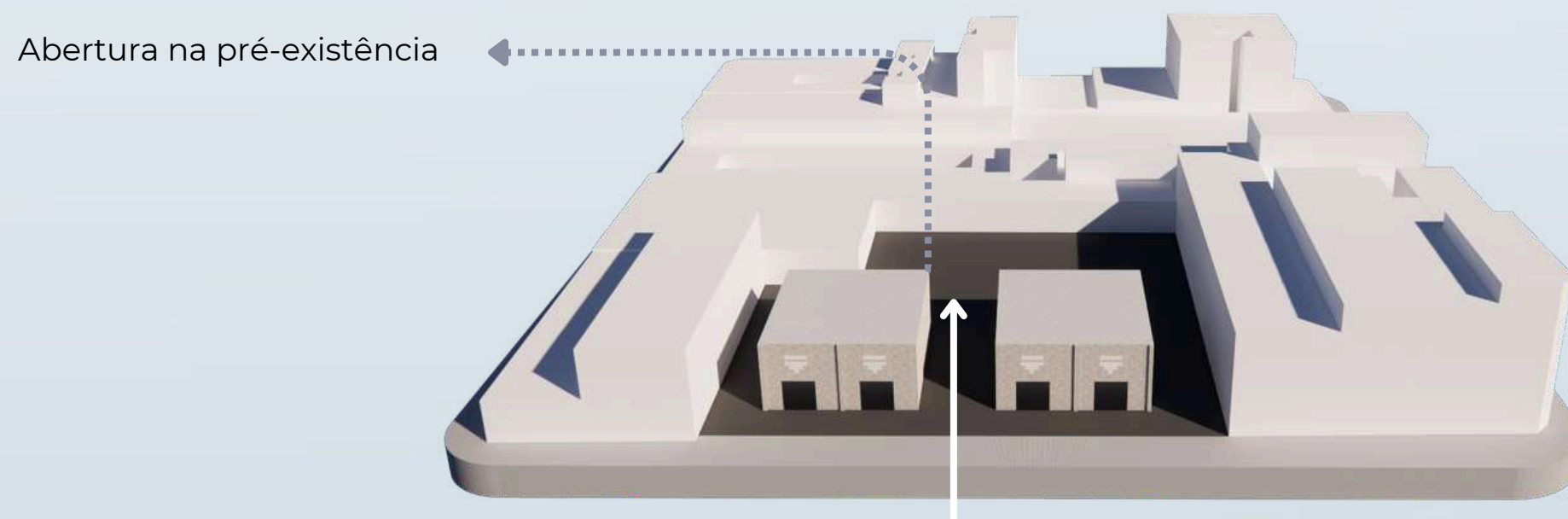
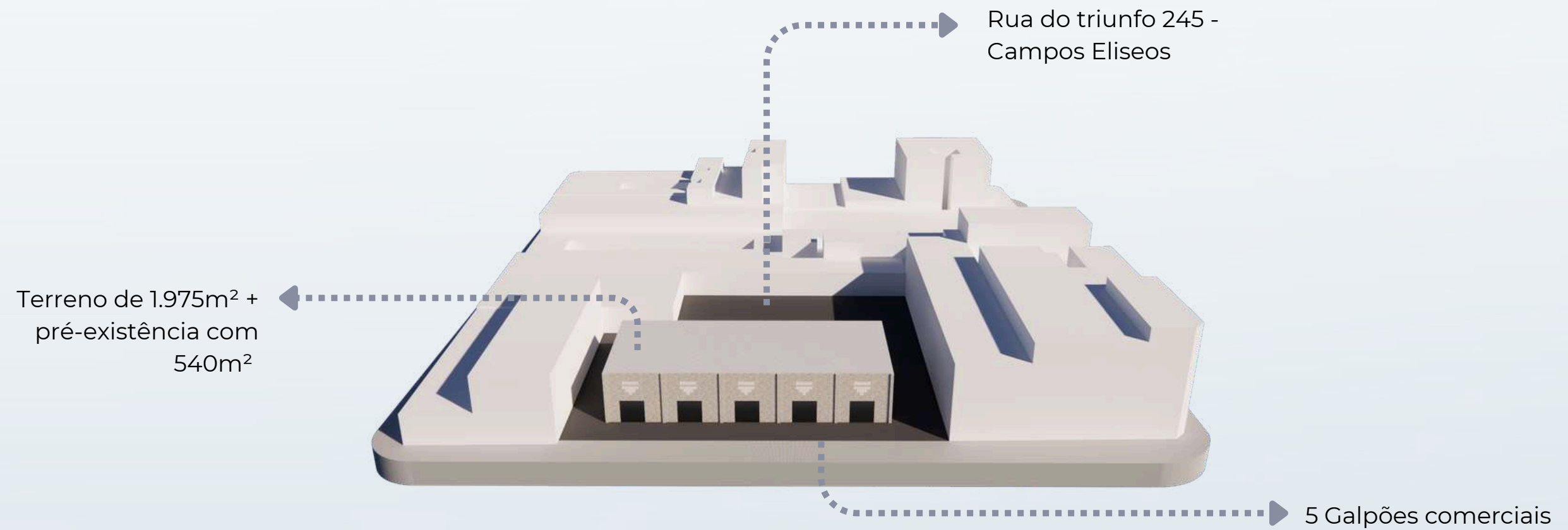


LOCALIZAÇÃO

Rua do triunfo 245 -
Campos Eliseos

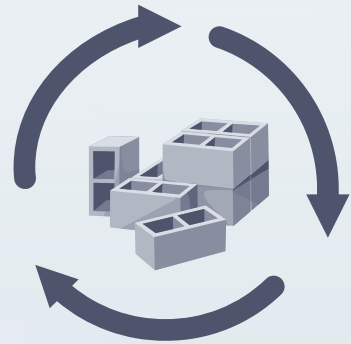


PROCESSO PROJETUAL



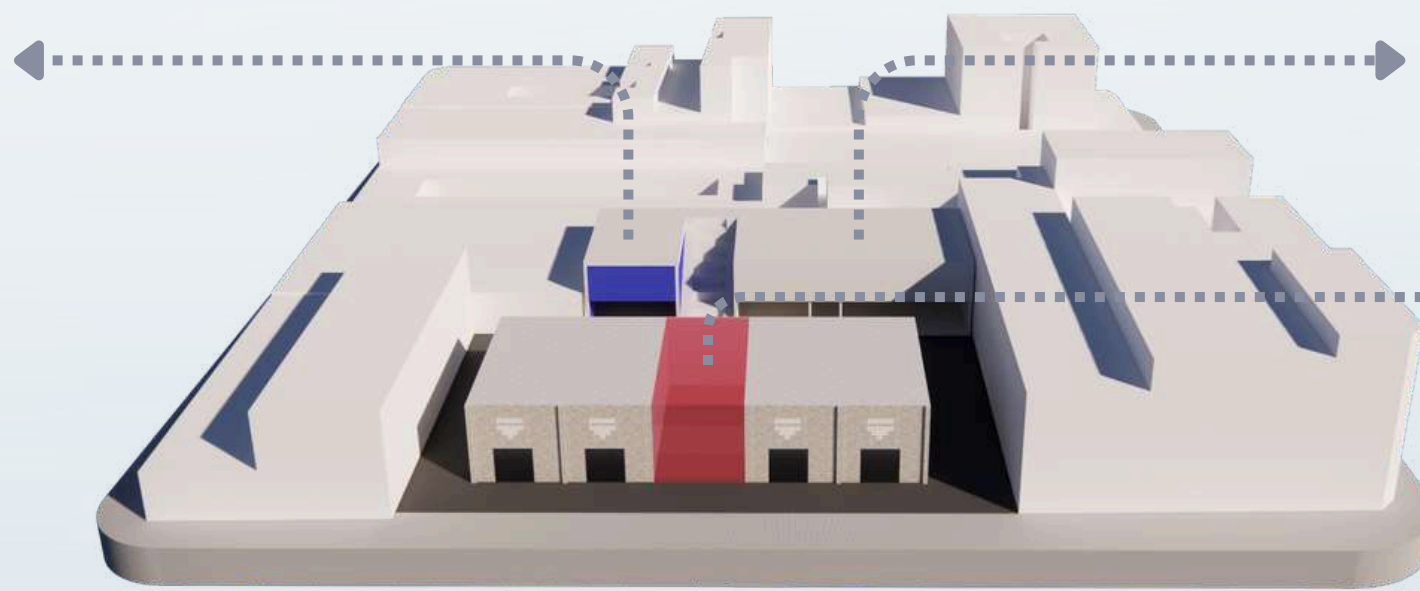
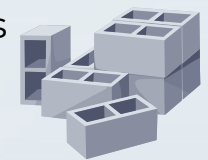
PROCESSO PROJETUAL

Os blocos retirados serão usados em uma sala de 30m²



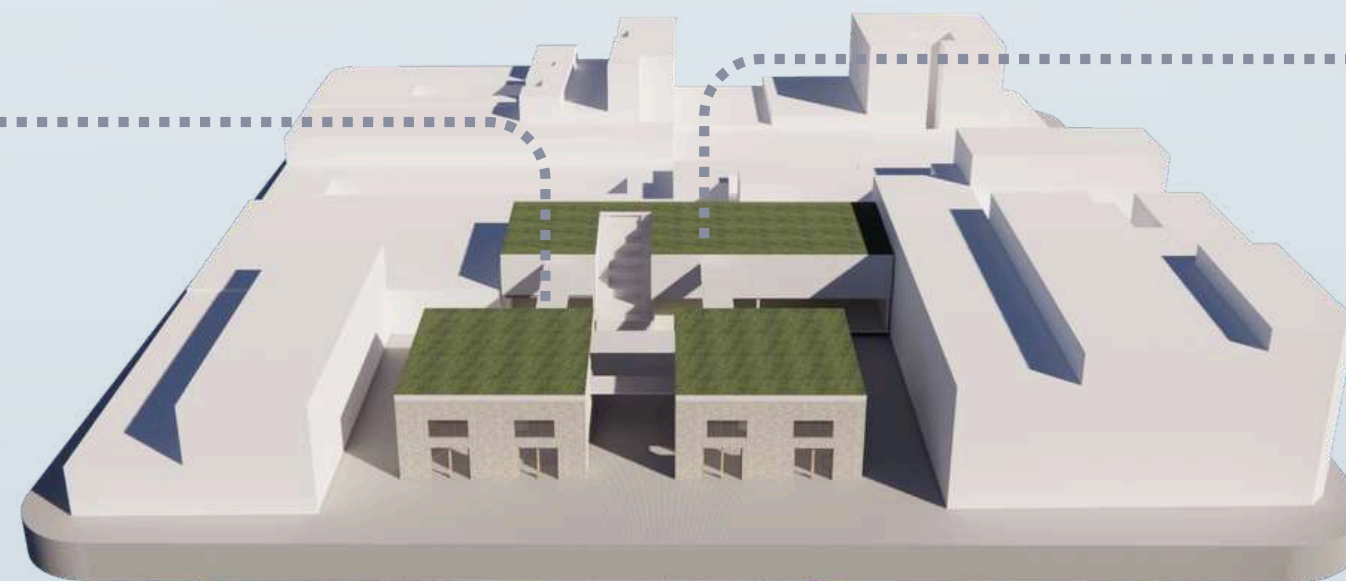
Implantação de 2 salas de cinema de 30m² e uma de 90m²

Foram retirados 1.325 blocos

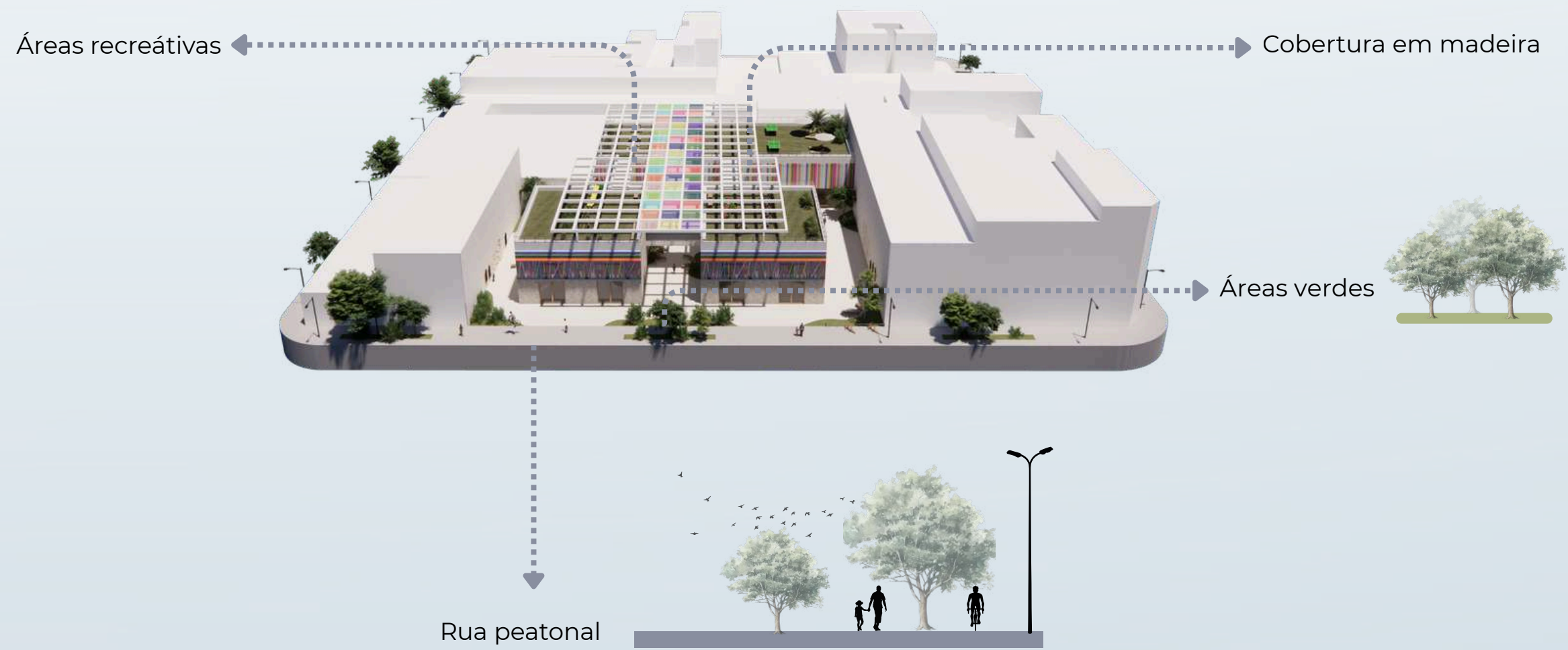


Tranposição entre as coberturas

Cobertura verde



PROCESSO PROJETUAL

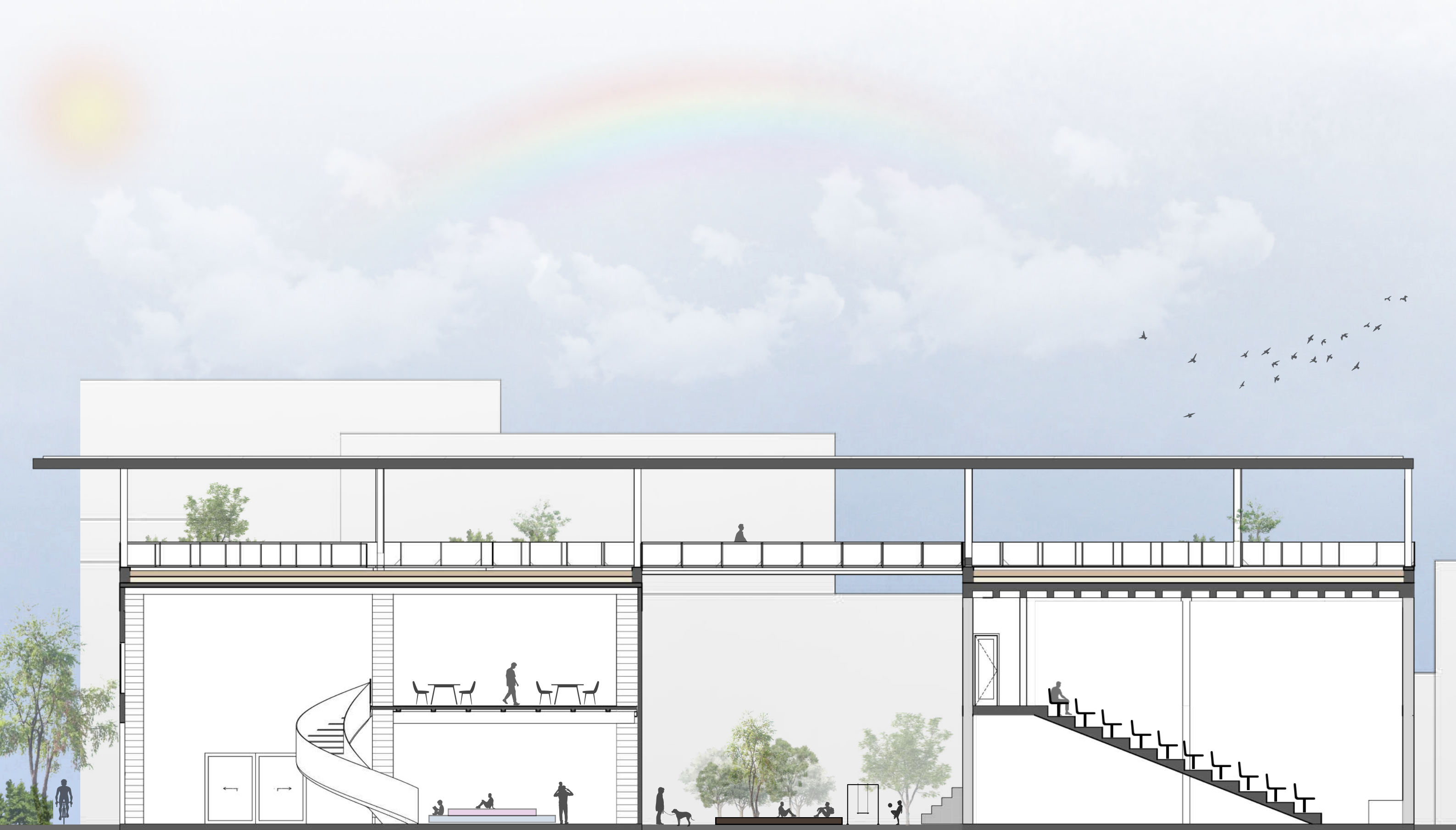












Corte A
escala 1:100



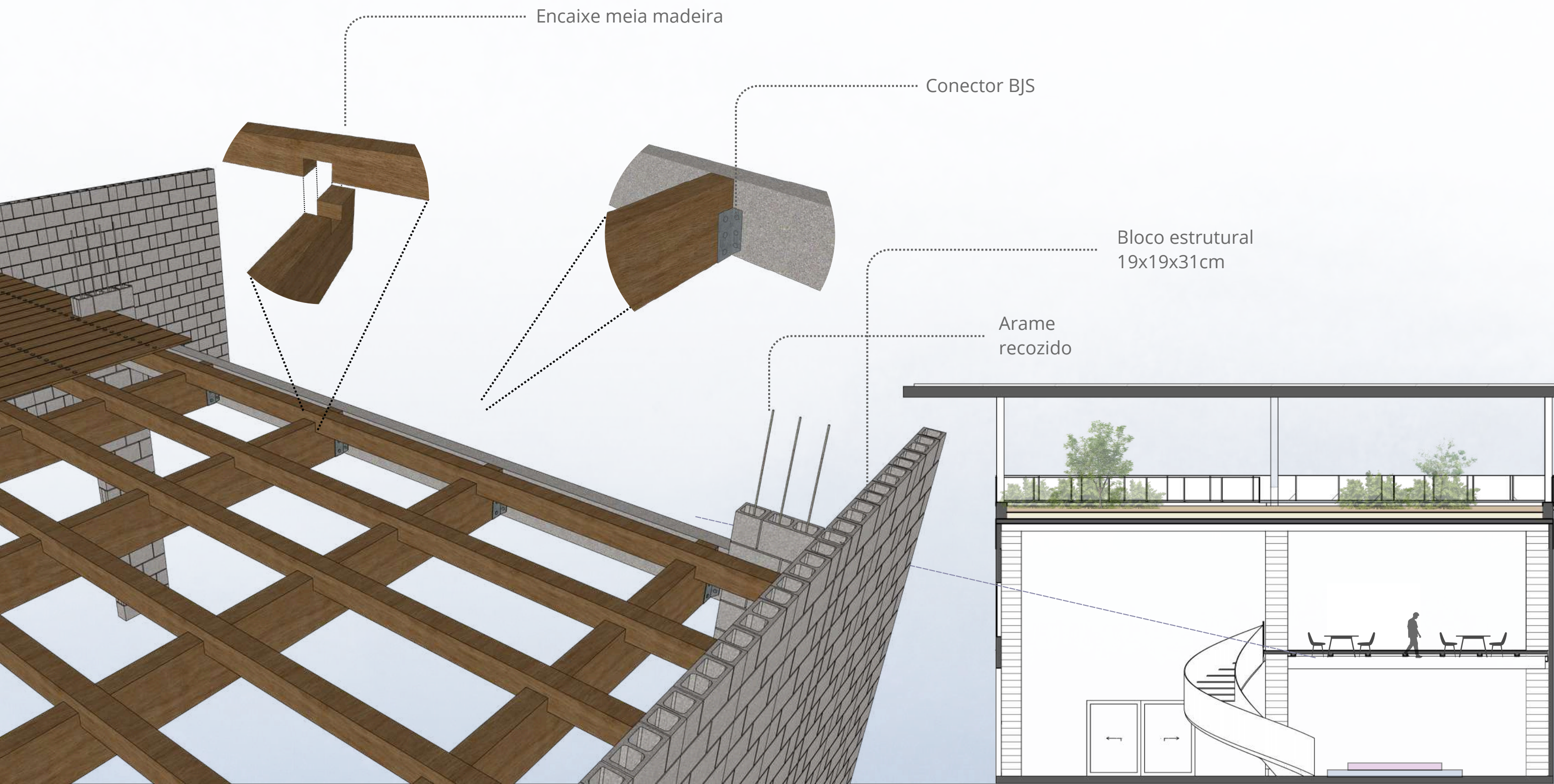
Corte B
escala 1:100



Corte C
escala 1:100

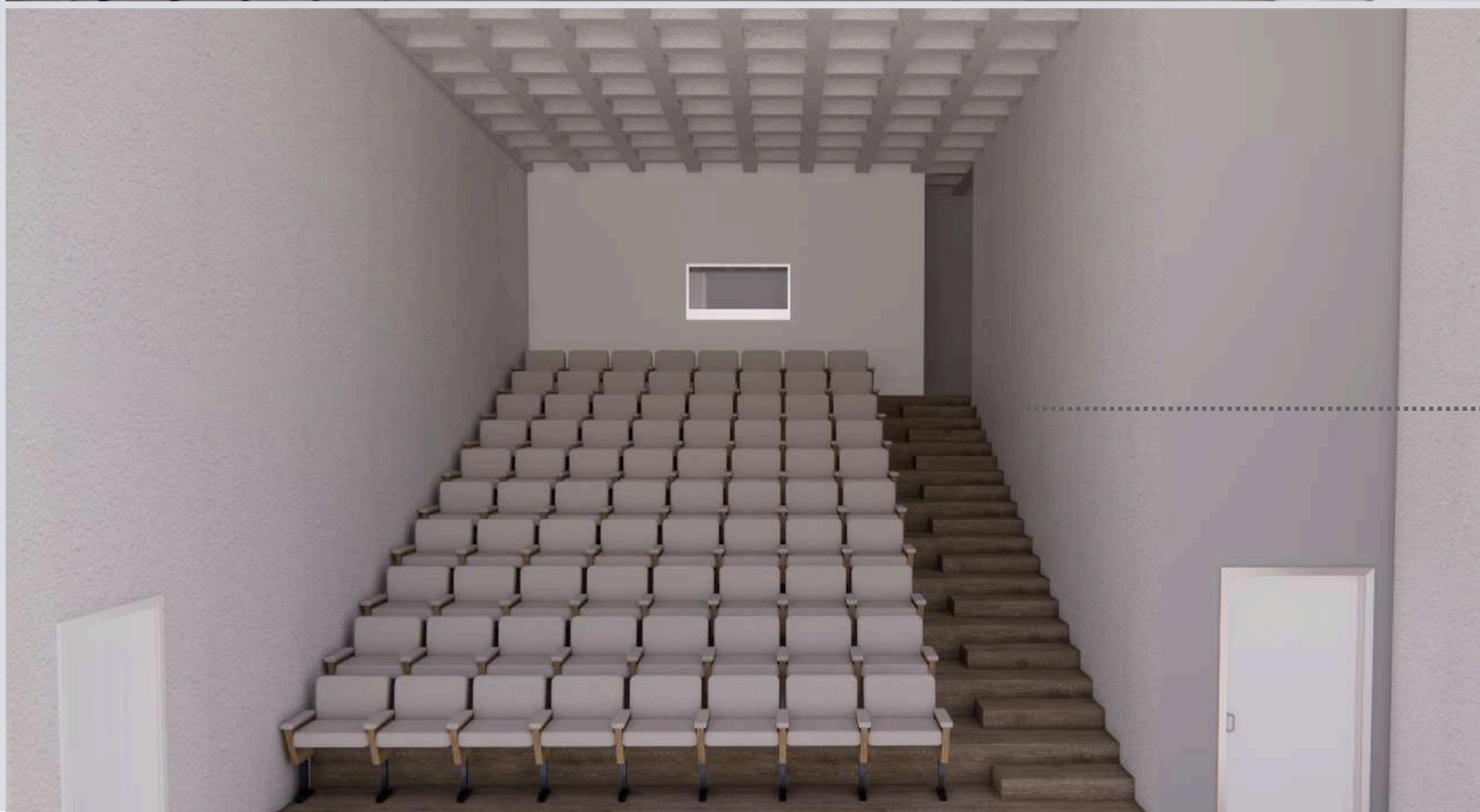


Corte perspectivado





Sala de cinema de 60m²



Sala de cinema de 30m²























