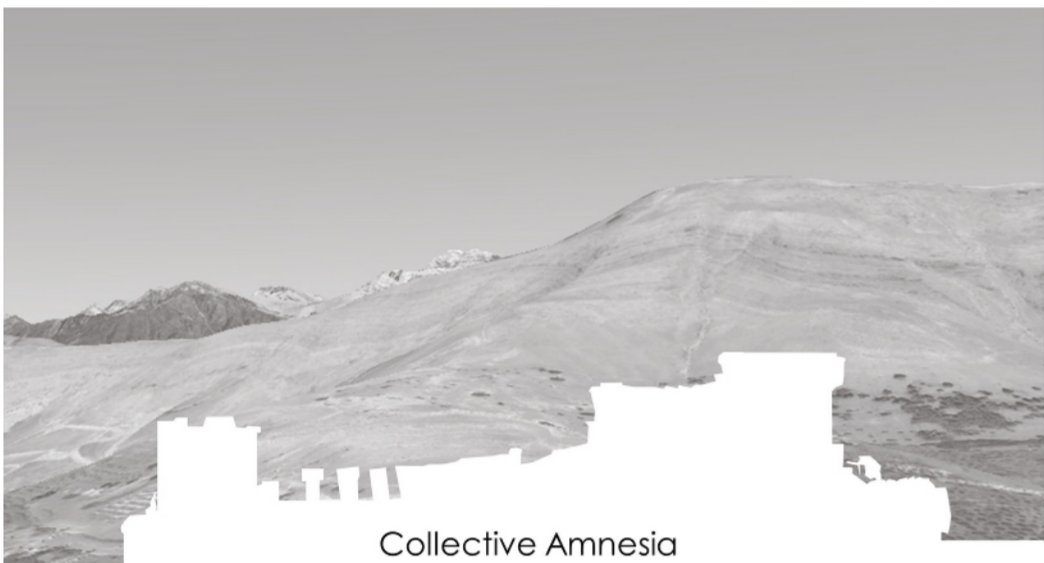


Continuum of Knowledge – A Experiential Learning Space.



Collective Amnesia

We live in a world where we remember the labels-religion, ethnicity and ownership-but have forgotten the **Original Purpose**. The monuments once built as "instruments of knowledge" have been reduced to "symbols of identity" leading to global friction and the loss of our shared human heritage.

History is no longer decaying; it is being deleted.



The Russia-Ukraine War



The Israel-Gaza & Lebanon Conflict



The US-Israel-Iran Conflict

WHO BUILT IT – TO – WHAT IS WAS BUILT FOR

India

A civilization that remains "alive" and holding its varied cultural diversity.



Holistic healing Ancient Knowledge Architectural Marvels
Spices and Flavours Spiritual Wisdom Festival and Colour

India's diversity flows from the top. **Kashmir** was the gateway that welcomed the world and shaped our identity. For centuries, it was the first place where different cultures, languages and ideas met and fused together.

The Story of KASHMIR



Kashmir – The Land of Peace and Grace

Kashmir, a paradise on earth. A land where mountains whisper peace. Where rivers sing songs of serenity. Valleys bloom with love and light.

A cradle of learning and wisdom. Home to saints, poets and philosophers. Where culture weaves a beautiful tapestry, Of harmony, faith and timeless art.

Here, beauty breathes in every breeze, And peace once dwelled in every heart. Kashmir—a land of spirit and soul, Forever shining in the light and hope.

It was the Intellectual Gateway, scholars, astronomers, and philosophers from all over the world traveled through the mountain passes of Kashmir to enter the Indian subcontinent. Kashmir was once the world's center for Sanskrit learning and Buddhist philosophy—a place where the mind was as vast as the Himalayas.



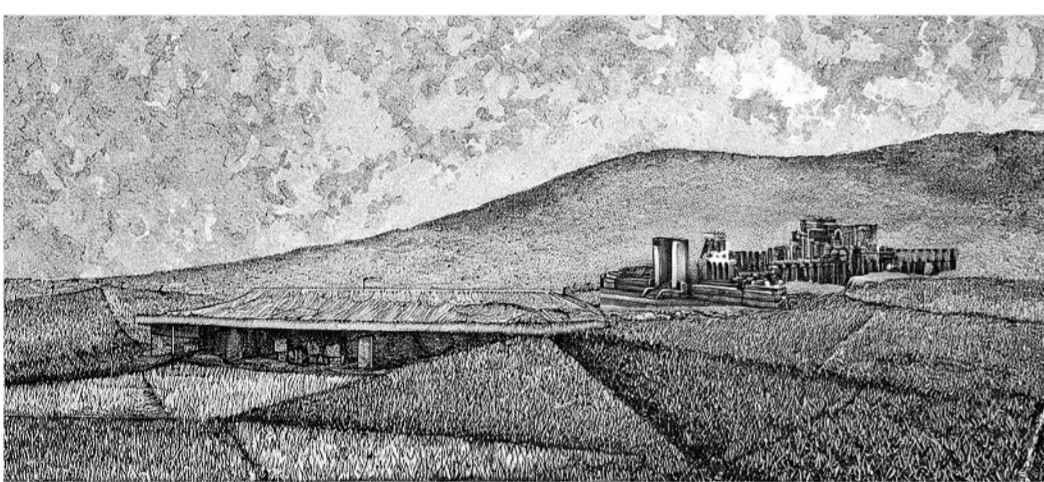
The Sorrow of Kashmir

Once a song of peace and light, Now wrapped in shadows of endless night. The chinar bleeds where it once did bloom, Its fragrance lost to fear and gloom.

The people wander, names erased, Their roots forgotten, dreams displaced. The river weeps a mournful tune, Beneath a pale and silent moon.

The voice of love has turned to cries, As hope still flickers, yet slowly dies. But deep within the valley's heart, A prayer for peace will never depart.

As the gateway to India, Kashmir's beauty became its greatest burden. It became a target for every empire. But every time someone tried to own this heaven, they ended up damaging its soul. Due to this the people of Kashmir lost their homes, culture, heritage and their own identity was destroyed.



When you lose your heritage, you lose your identity.



The people of Kashmir lost their homes, culture, heritage and their own identity was destroyed. The displacement of people led to a displacement of memory.

Words From the People of Kashmir

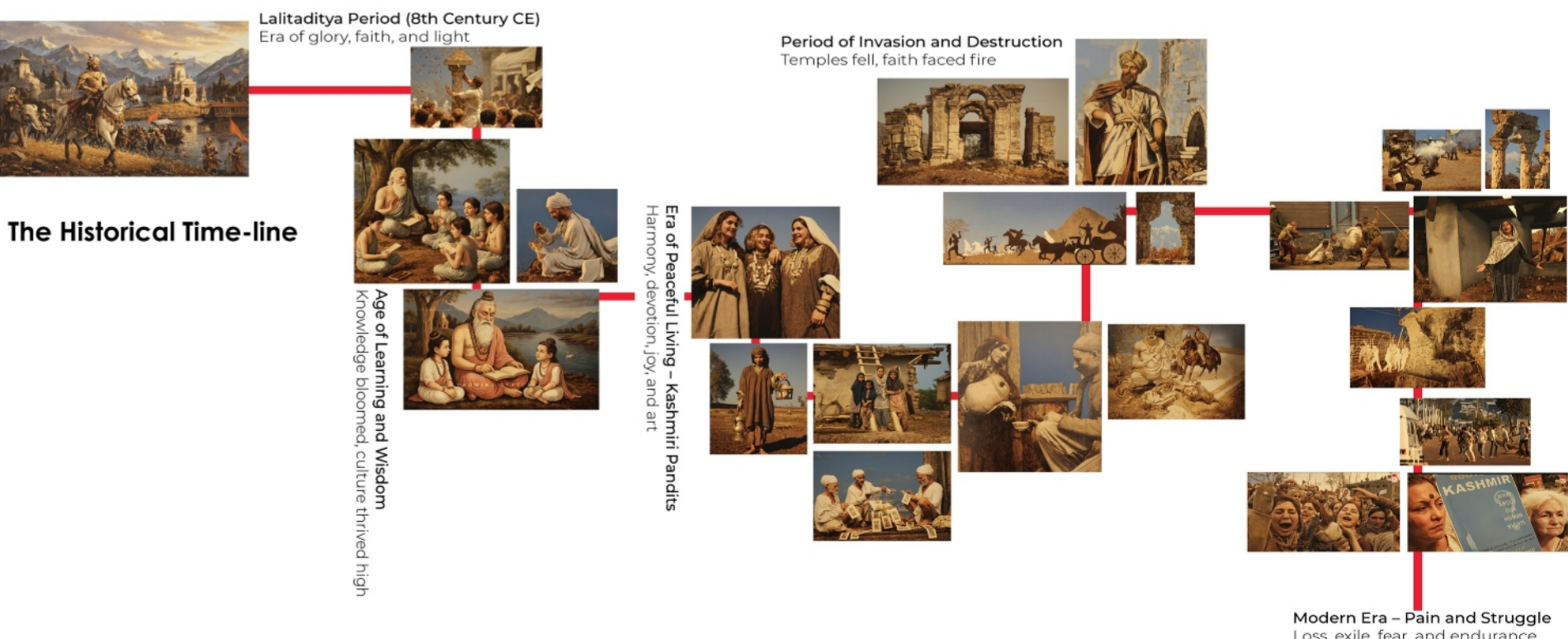


Kusum Lata Bakshi " I was 16 years old, when they killed my 25 year old cousin. He was educated and was sitting out in the sun when 3-4 people came and pushed him, when he asked what they were doing, they sprayed him with bullets.

Bansilal Sharma " We've been thinking of going back to Kashmir for the last 32 years. We used to think that we would go after 2-3 months. We didn't know that we would have to leave everything in Kashmir and come here. Had we known this we would have preferred to die there.

Anant Kumar Bhat " I come from Kashmir's Anantnag district. The atmosphere in my childhood was conducive.

Ambreena " Our children can't go anywhere, we have been abandoned and we fear our children will suffer the same fate. We have no identity of our own.



The Historical Time-line



Site – The Martand Sun Temple

Standing at the center of this trauma is **The Martand Sun Temple**. It is the ultimate victim of this amnesia.

The Martand Sun Temple is not just a ruin, but a **Peak of Knowledge**. It is India's first Sun Temple, a celestial laboratory designed to track time and the cosmos.



The Martand Sun Temple- The Glory of ancient Kashmir.

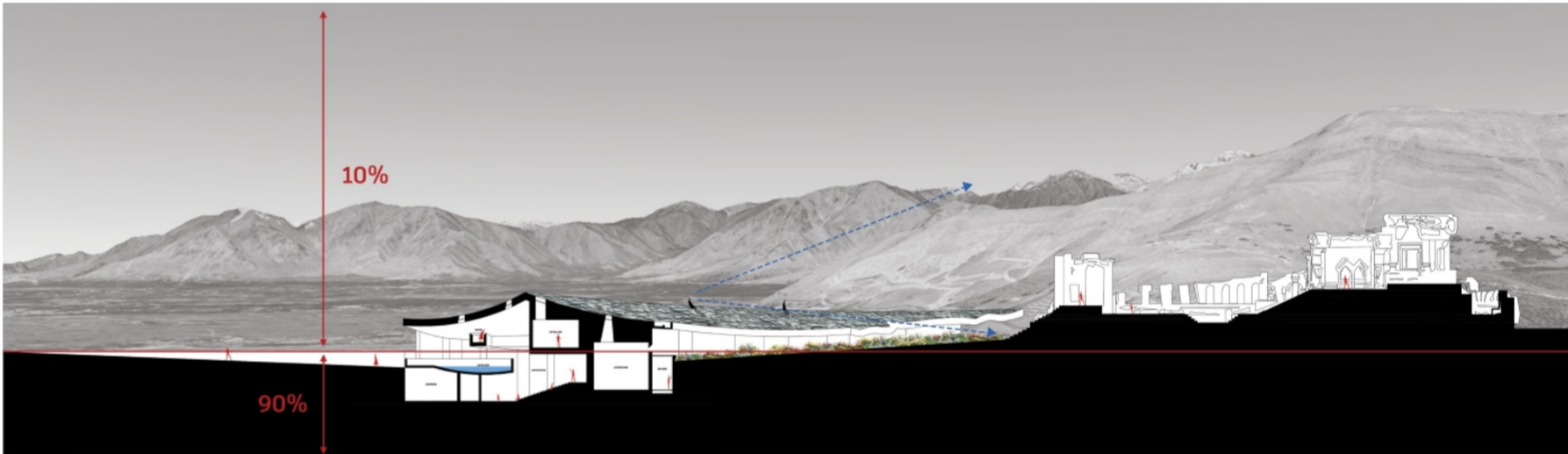
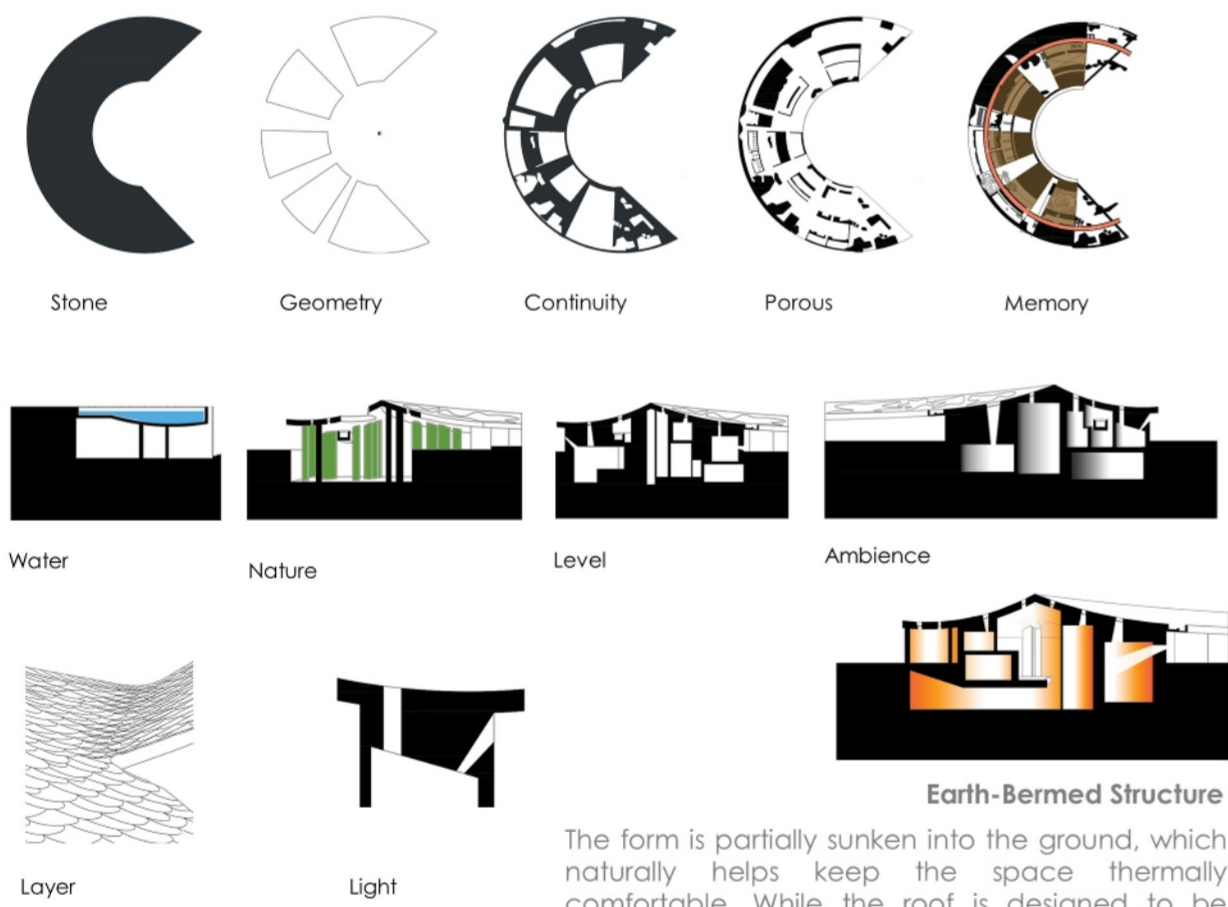
It is a strong example of ancient Kashmir. It reflects the region's old traditions, its understanding of astronomy. Its spiritual practices and its impressive style of building.

Location: Situated near Anantnag in Kashmir, built on a high plateau overlooking the beautiful landscape.





Form Evolution



Culture is not always visible. The small part you see at the top -10% -which is: food, clothes, crafts, and language. But the most important 90% is deep under the surface-history of living, Vedic science, values, the shared identity and religious harmony. To bring back the value of Kashmir, my building revives the 90% of Kashmir.

Earth-Bermed Structure

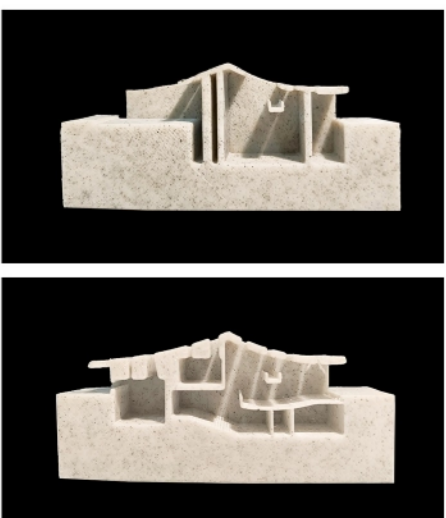
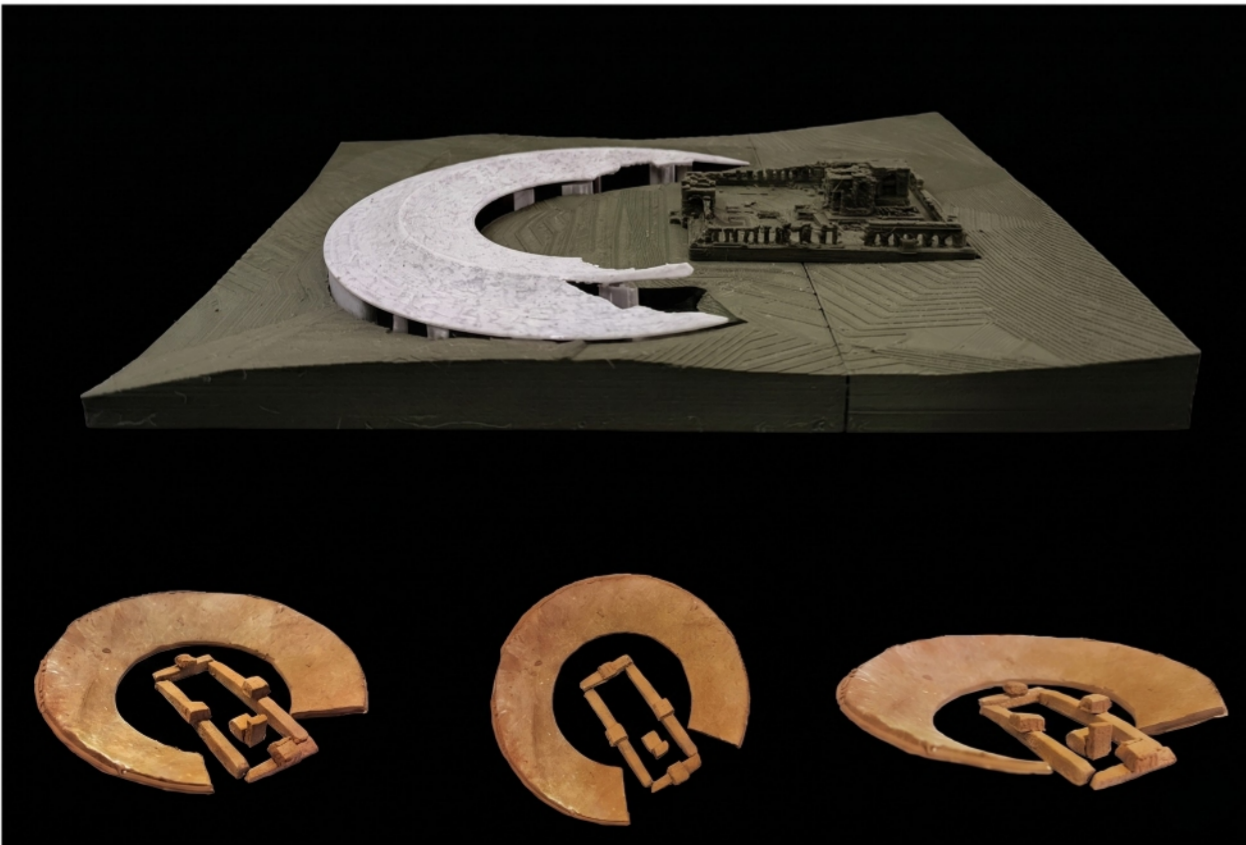
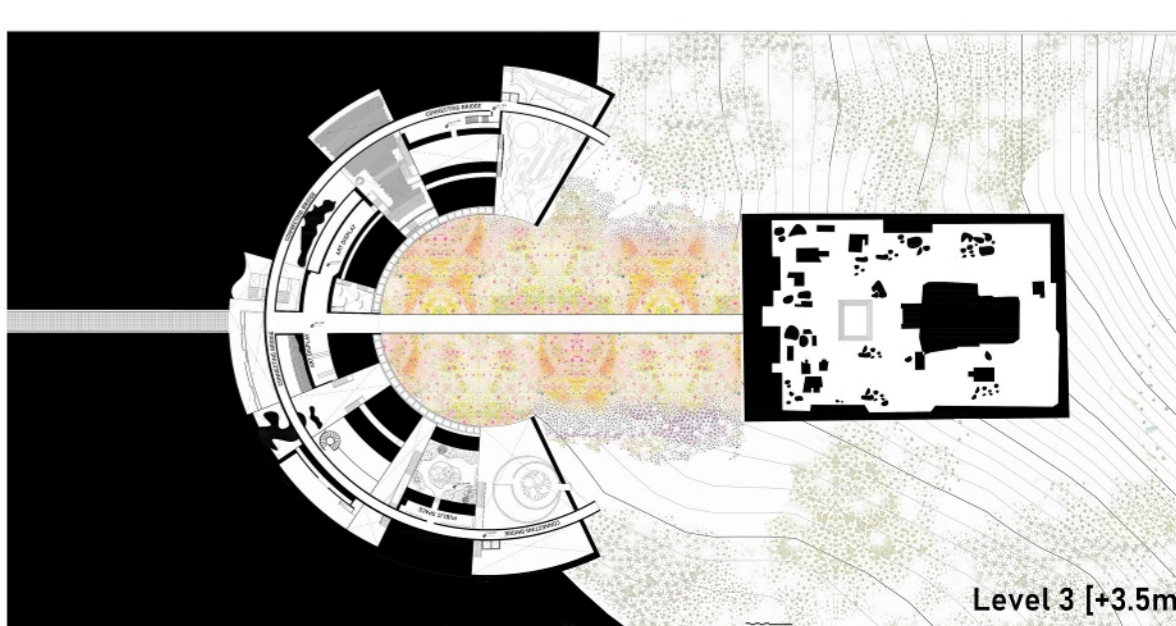
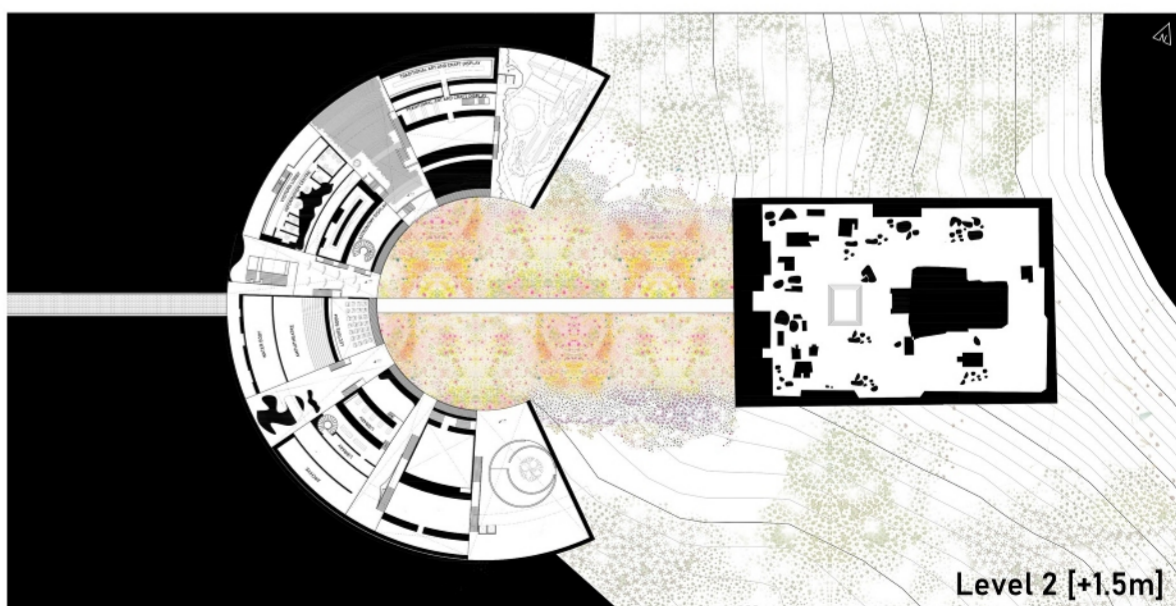
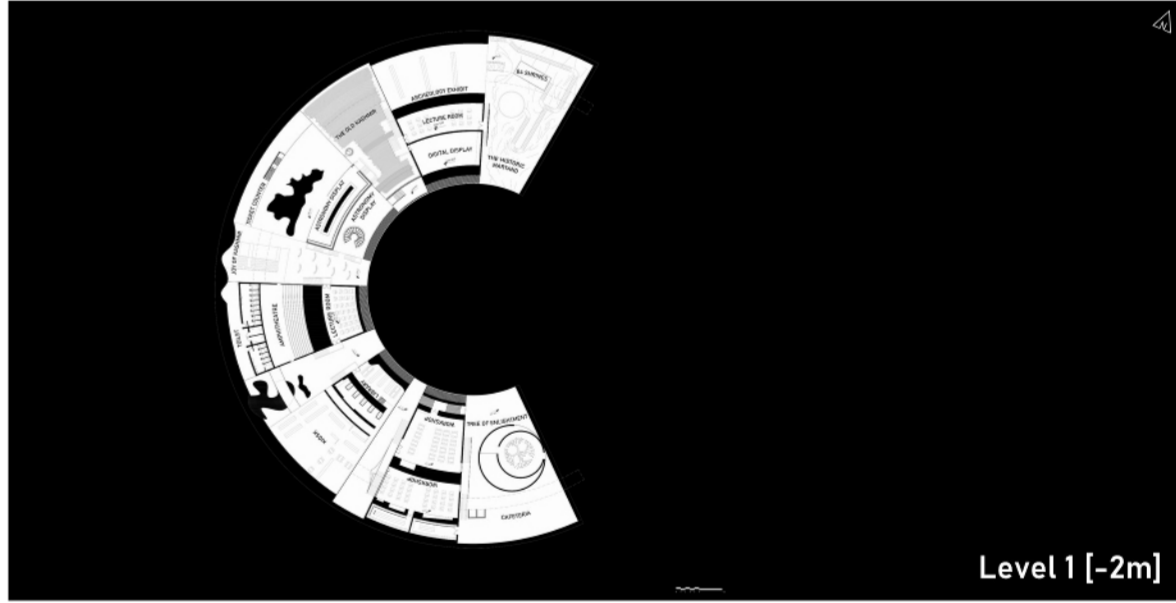
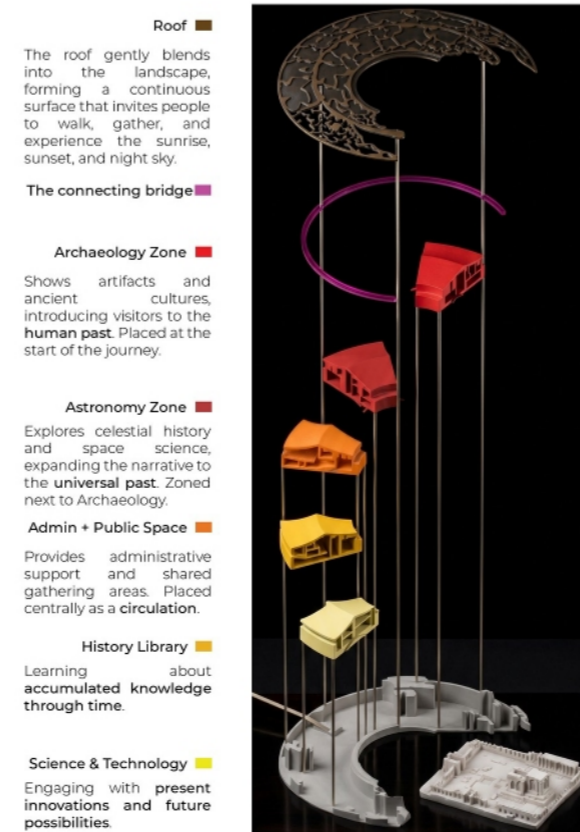
The form is partially sunken into the ground, which naturally helps keep the space thermally comfortable. While the roof is designed to be climate-responsive to Kashmir's environment.



The form is derived in such a way that it focuses the temple at the centre positioned along its axis.

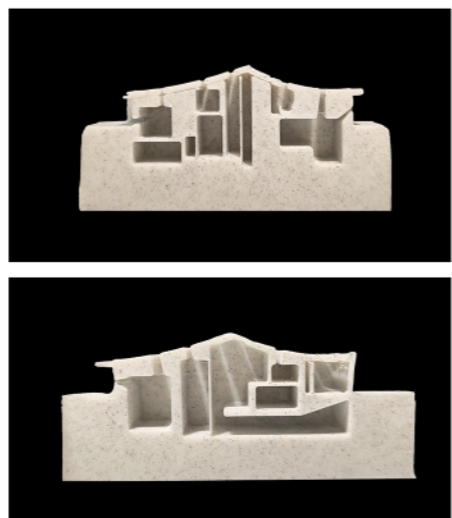
Spatial Organization

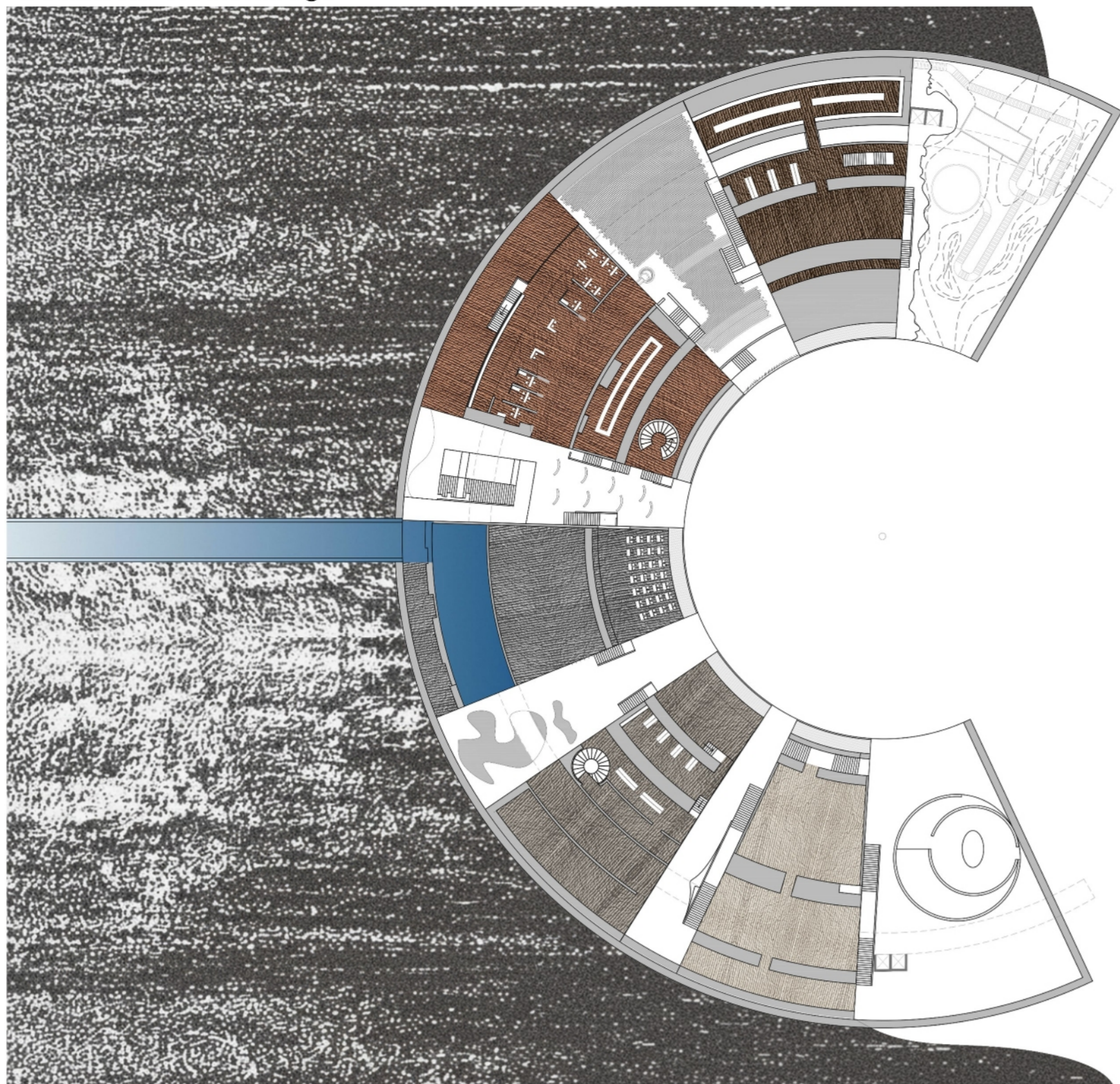
To represent the deep culture the spaces are organised into four knowledge nodes. The node of the sun, the node of the voice, node of the World and the node of the hand.



Physical model were made to experiment how light moves in interior spaces.

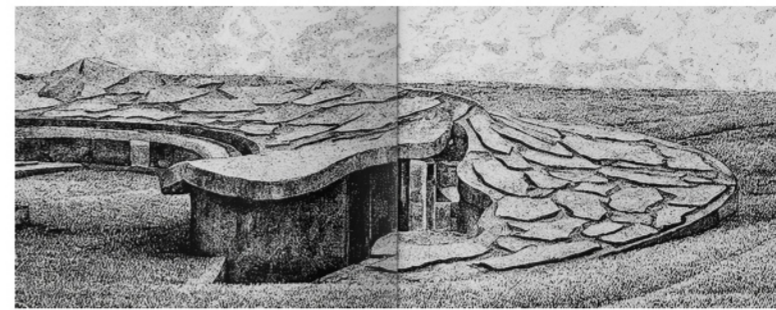
Each interior space has its own breath. The volumes is carved to fit the life inside them—some are narrow and intimate, others tall. The air feels different in every space because the purpose is different.





The Shades of MATERIAL

The vertical surfaces are defined by a rhythmic installation of Kashmiri Slate, from deep bark browns to ethereal pale whites. In the initial zones, the stone's darker, rugged textures ground the space in the earthy, somber memory of the Kashmiri landscape. As the user moves toward enlightenment, the slate gradually shifts through gradients of grey and warm taupe, eventually culminating in a bleached, pale-white finish. This transition doesn't just change the color of the walls; it fundamentally alters the luminosity of the space.



The materials are chosen from the Kashmir traditional architecture.

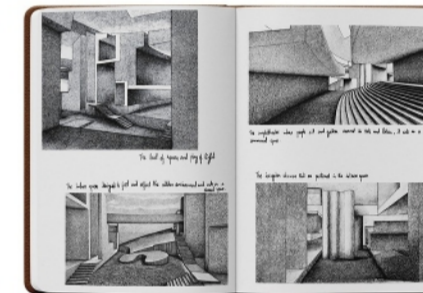
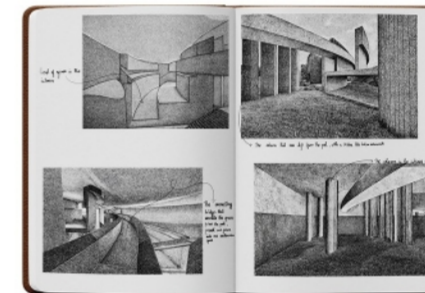
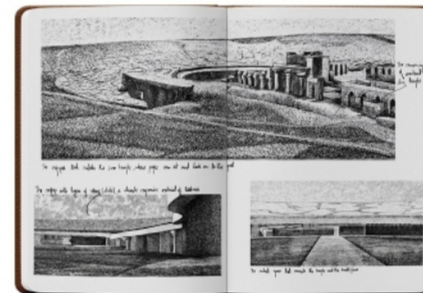
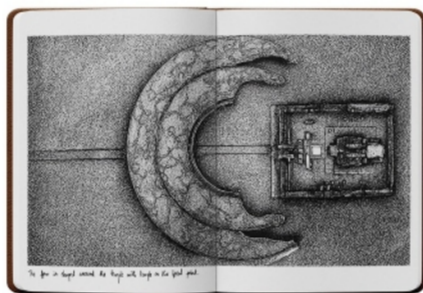
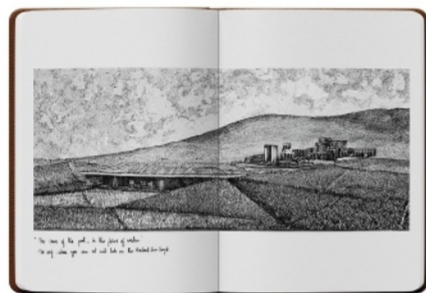
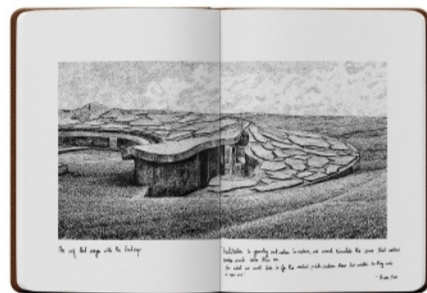


Experimenting various techniques with local artisans.



Sketches

Various Experimental spaces explored through sketches for the design evolution.

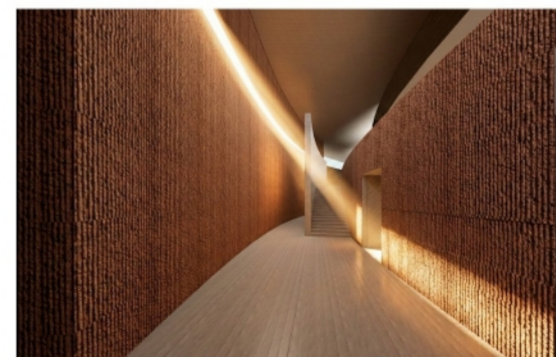


Furniture

Every piece is bespoke to its zone.

Material palette create a spatial experience, they change from the darker tone to lighter and the furniture also aligns with it.

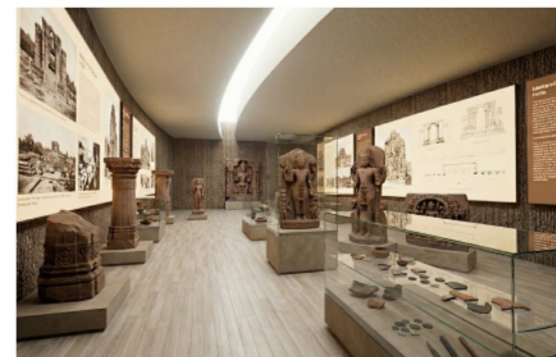
Visitor's Lounge



Astronomy Exhibit



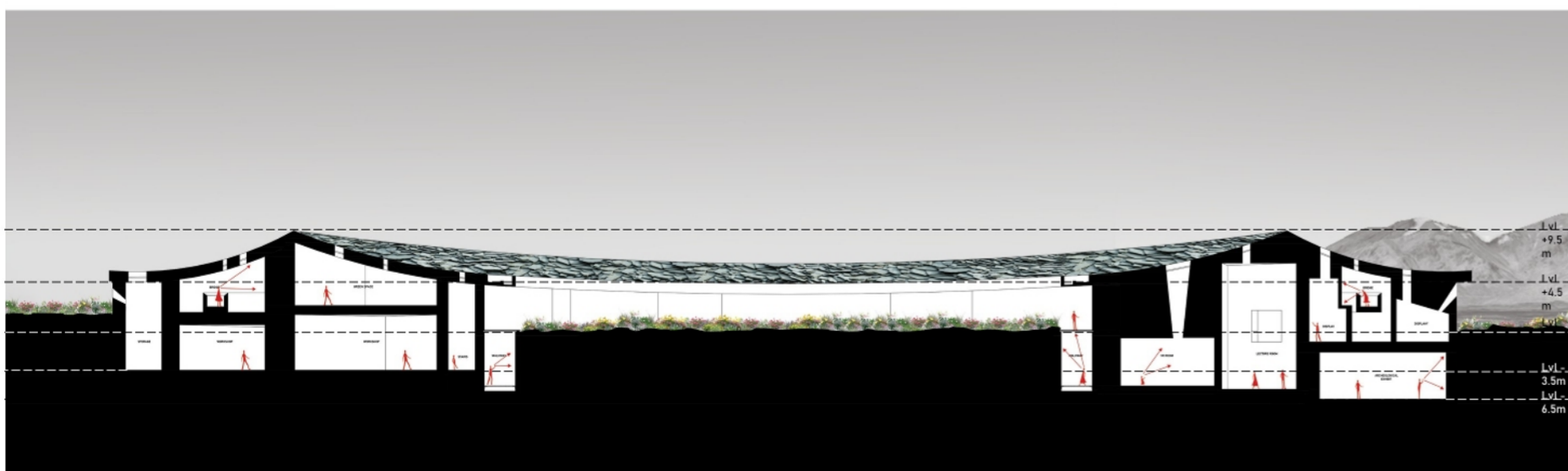
Archeology Exhibit



Traditional Art and Craft Display



The design proposes a revival of the cultural node by reactivating its original purpose through architecture that integrates past, present, and future, organizing spaces into thematic knowledge systems and experiential journeys that heal, educate, and reconnect. Ultimately, it argues that while cultural centers may be targeted and destroyed, reviving them can rebuild communities, proving that knowledge and culture are never truly lost.



Learning Space



The Old Kashmir



The Historic Martand

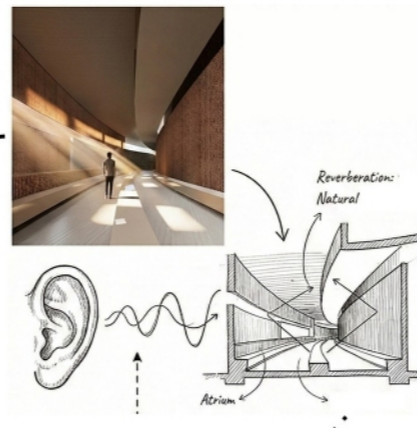


Tactile (Touch)



The sense of touch establishes the most intimate connection between the user and your architecture. By utilizing materials with contrasting textures—such as raw, bush-hammered stone against satin-finished metal—you invite users to engage physically with the surfaces.

Auditory (Sound)



The acoustic quality of a space defines its soul, whether it is a place of high energy or silent reflection. By varying the proportions and volumes of each zone, it creates a unique acoustic journey throughout the building.



Taste

Taste in architecture is about how a space can evoke a sense of flavor through the use of organic materials, herbs, or edible gardens.

Olfactory (Smell)



Smell has the strongest link to memory and emotion. By integrating organic materials like stone, wood, slate and even aromatic plantings within indoor-outdoor buffers, it creates a "scent-scape".

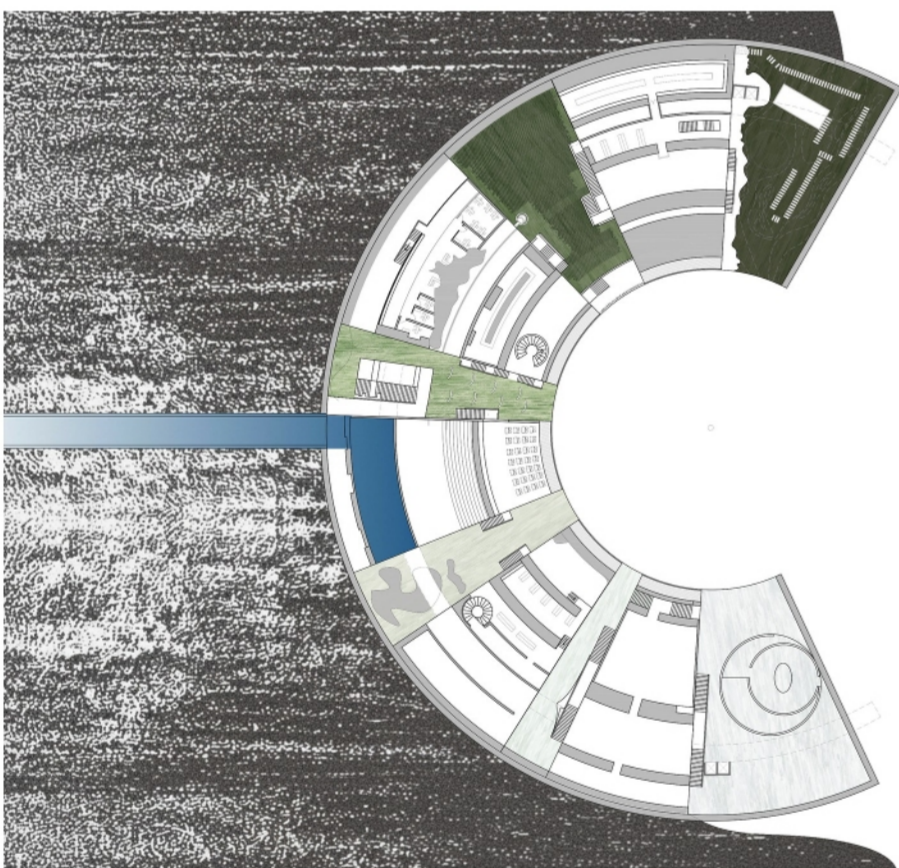
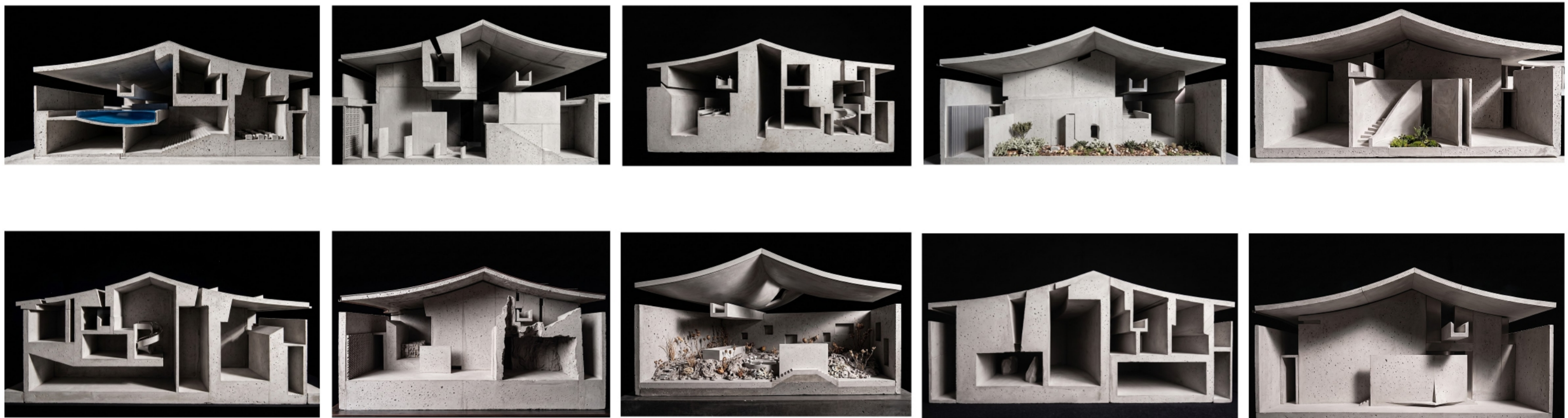
Visual (Sight)



Sight is often the primary way we experience space, but in a sensory design, it's about the interplay of light and shadow. Using semi-transparent materials like etched glass or perforated screens creates a dynamic visual rhythm that changes throughout the day.

Sensory interactive exploration

To bring back the sensory interactive experience once they had, the interior spaces were carefully sculptured for not only to create visual interest also allows the people to feel through olfactory.



The Shades of LANDSCAPE

The landscape is a living reflection of the interior's emotional transition, moving from the dense, darker-shaded foliage of the Kashmiri forests in the initial zones to an increasingly ethereal, light-toned garden at the journey's end. This botanical choreography begins with deep-green, rigid evergreens that symbolize rooted memory and hypervigilance, gradually softening into silvery-green species that filter dappled light. As the visitor reaches the final zone of enlightenment, the flora becomes airy and translucent.



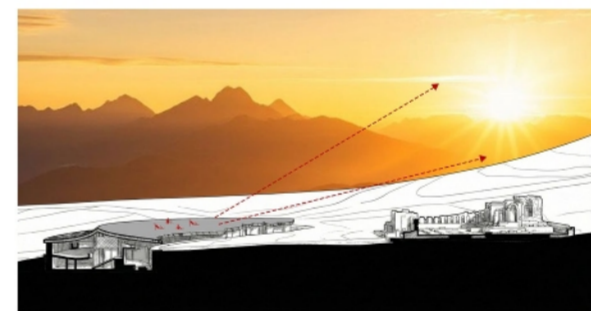
Dark-foliage species and deep-green.



Muted, light-greens.

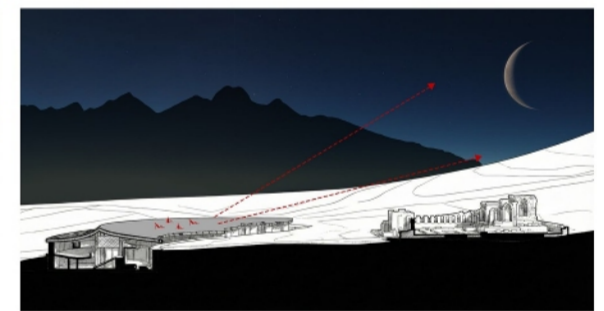


Silver-leaved plants, white-flowering species, and airy ornamental grasses.



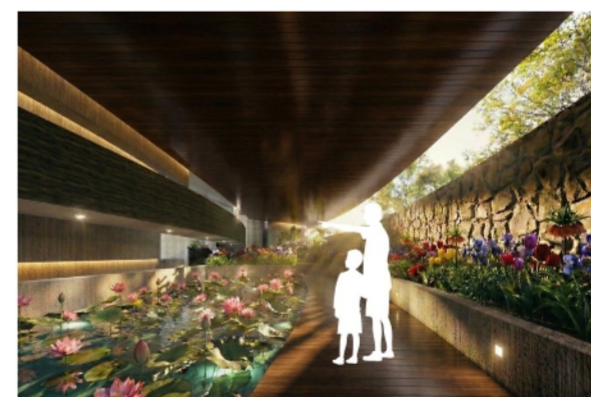
Early morning

The roof is acting as a social space where the community can gather.



Night

This is inspired from the traditional Kashmir's roof and acts as an viewing deck.



The Reflection Pond



The Joy of Kashmir

Amphitheatre



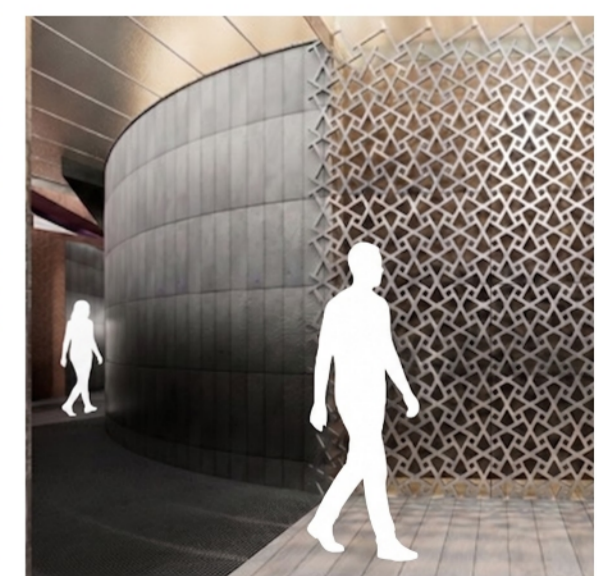
The Library



The grand volume of the learning space is to offer the imagination to rise. It is a space to rediscover literature, Vedic science, and philosophy. It brings back the value of Kashmir that once it had.



The Brutal Reality

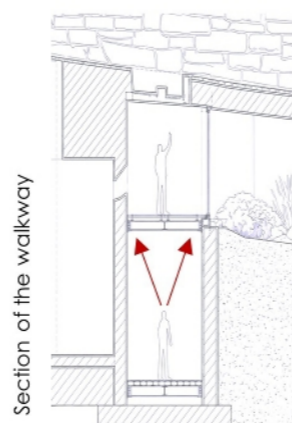
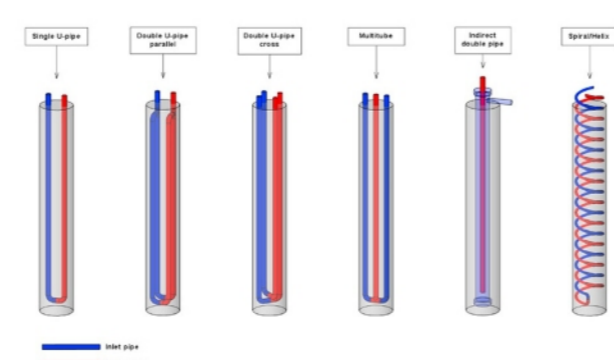


In the past, the culture was reflected through soft, traditional wood carvings. Those same patterns are recreated in hard metal to represent how culture has changed over time.



Geo Thermal Energy Piles

The geothermal energy pile system has been used for the sustainable heating and cooling of the building.



Section of the walkway



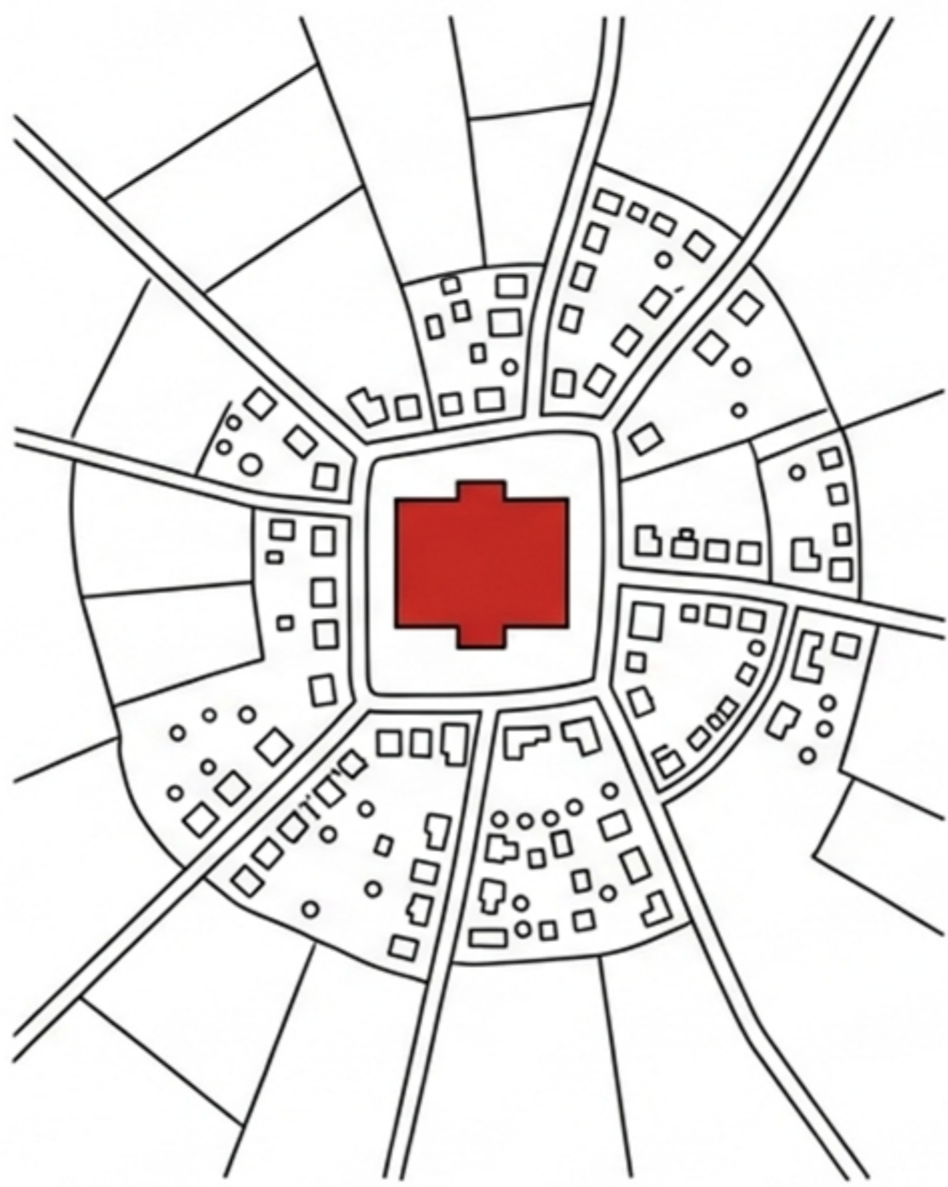
The Path of Hyper-vigilance



The Feeling of Warmth



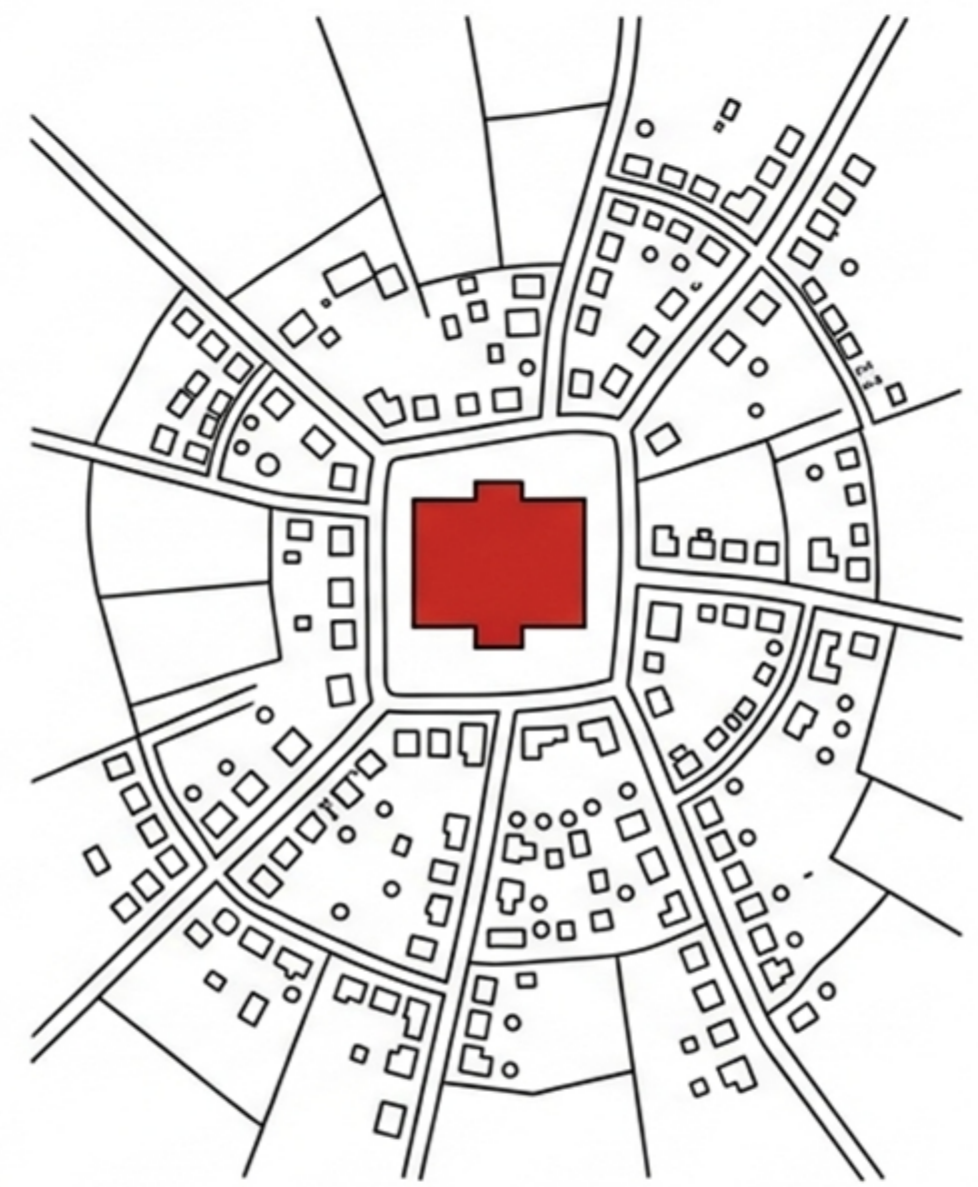
The feeling of Trapped



Cultural Node – Community Settlement



Cultural Node Destroyed



Cultural Node Reactivates – Communities Re-settled

This building proves that **knowledge and culture** can never be truly killed - only reborn in different ways.