



Amidst the movement of daily life, the community center provides a moment of pause—a serene setting where nature, culture, and human interaction come together in quiet harmony.

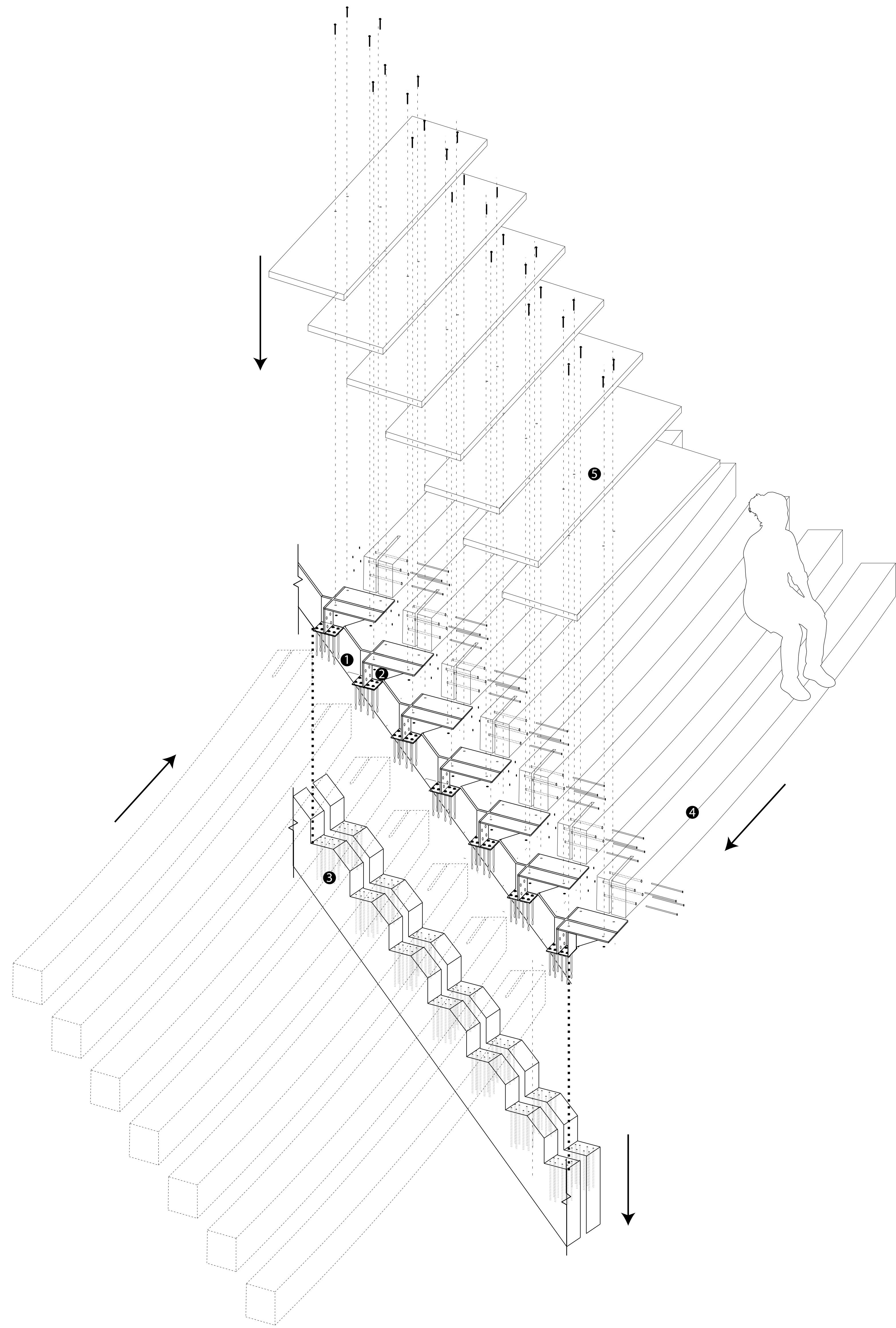


The inclusion of ramps and direct entrances makes circulation in and out of the space intuitive, fostering a continuous flow of users while reducing congestion in high-traffic areas. Users are given the choice to pause and observe or continue moving through the space, maintaining a seamless rhythm of movement while connecting both sides of the city.



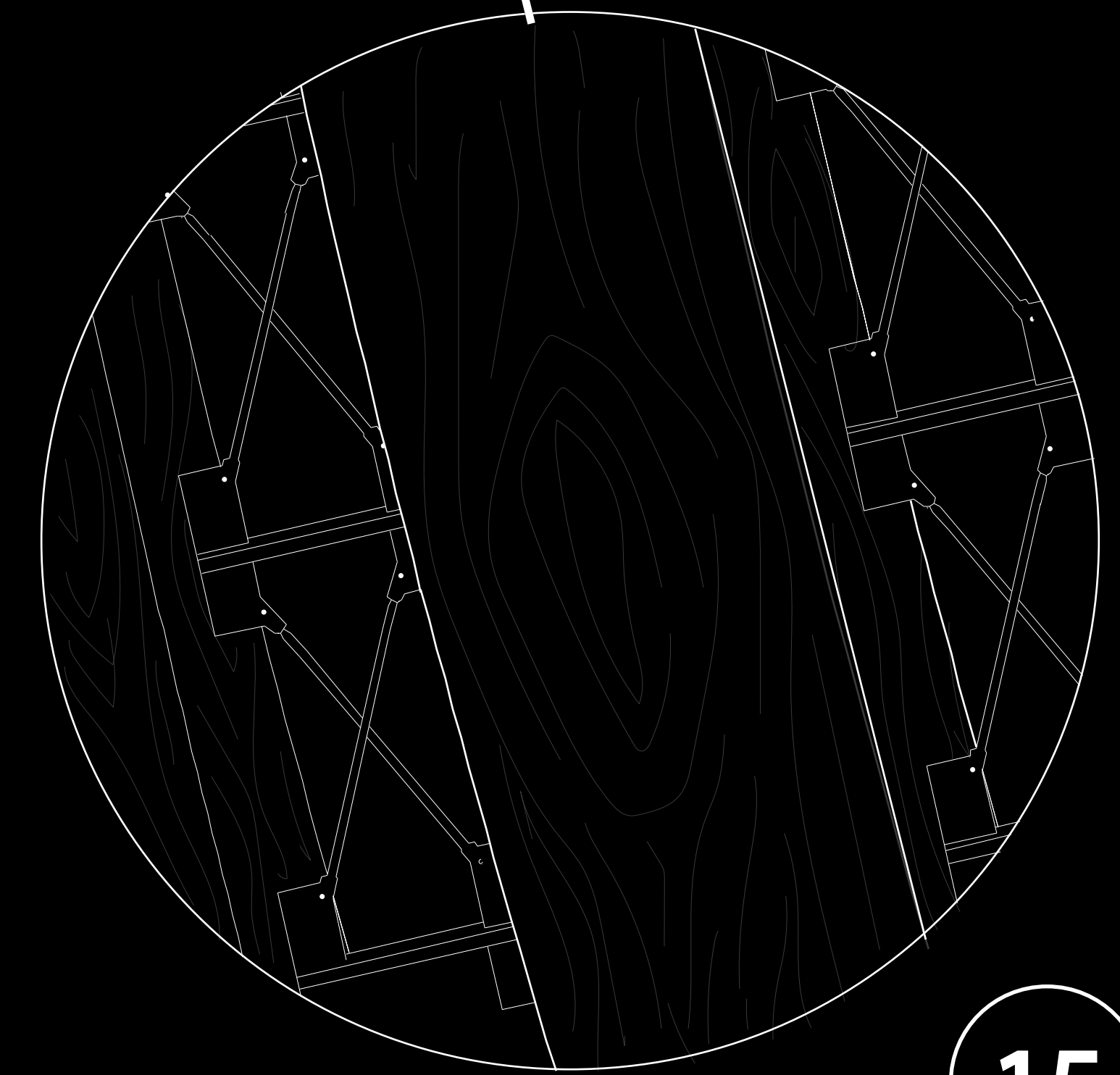
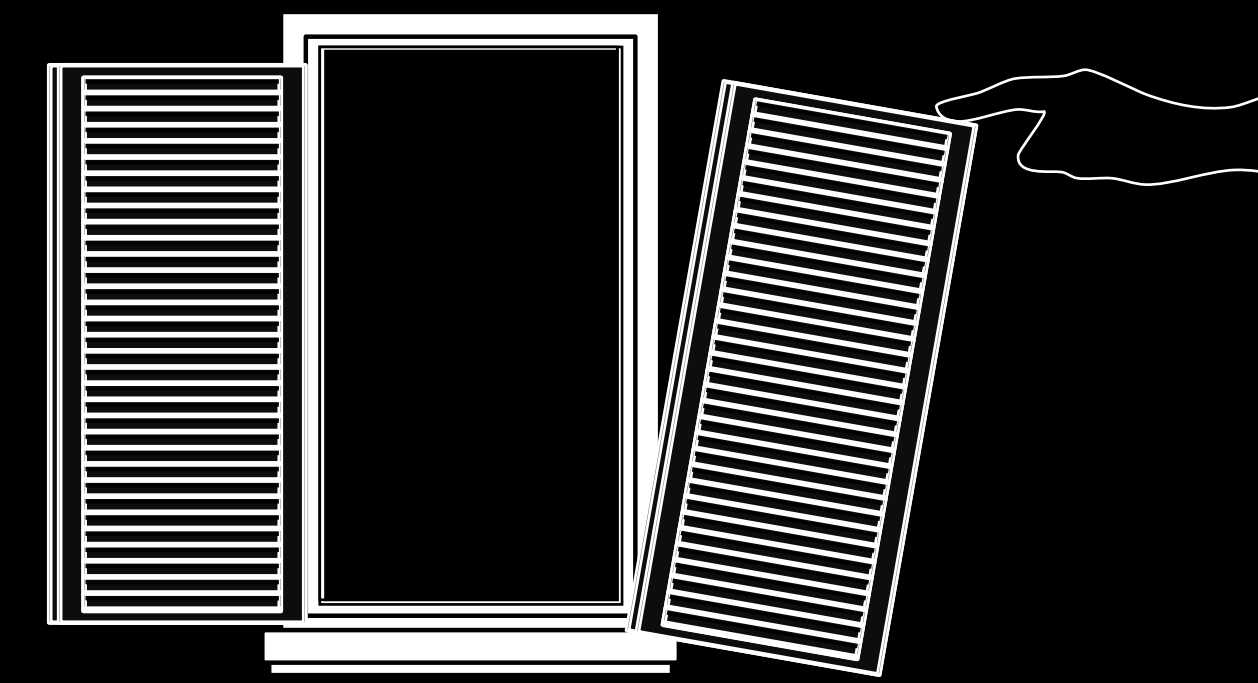
Markets have long served as social anchors, bringing people together through everyday exchange and interaction. This market accommodates flower vendors and local produce stalls, reinforcing the ancient commerce of City's coast while celebrating its cultural continuity and community life.

FACADE



The **Facade** reimagines the vernacular architecture of Cyprus through the reinterpretation of *aḥṣap kepenk* (wooden shutters), traditionally used for privacy and for channeling wind by accelerating airflow through narrow openings. In this design, the façade goes beyond environmental performance to become a hybrid element that is both protective and social.

It doubles as a warm, earthy, and welcoming seating surface that encourages interaction and community gathering. Acting as both skin and structure, the façade shields the community's values while simultaneously supporting its people—carrying social life at its edge and transforming a boundary into a place of connection.





Skateboarding, as a rising youth culture, is transforming public space into an active field of expression and interaction. Positioned at the heart of the community center, it becomes the most dynamic layer of the project—activating space through movement, energy, and social engagement

USER COMFORT AND PRIVACY

User comfort is enhanced by the use of simple passive design strategies to promote a thermally comfortable environment for its users. Skylights bring visibility and natural daylight into the space, while narrow openings keep spaces cool during summer by drawing in the prevailing pre-cooled west wind. The air is pre-cooled before entering through evaporation from shallow pools, while circular corridors help extend and distribute wind deeper into the interior spaces.



FIRST FLOOR - KINDERGARTEN



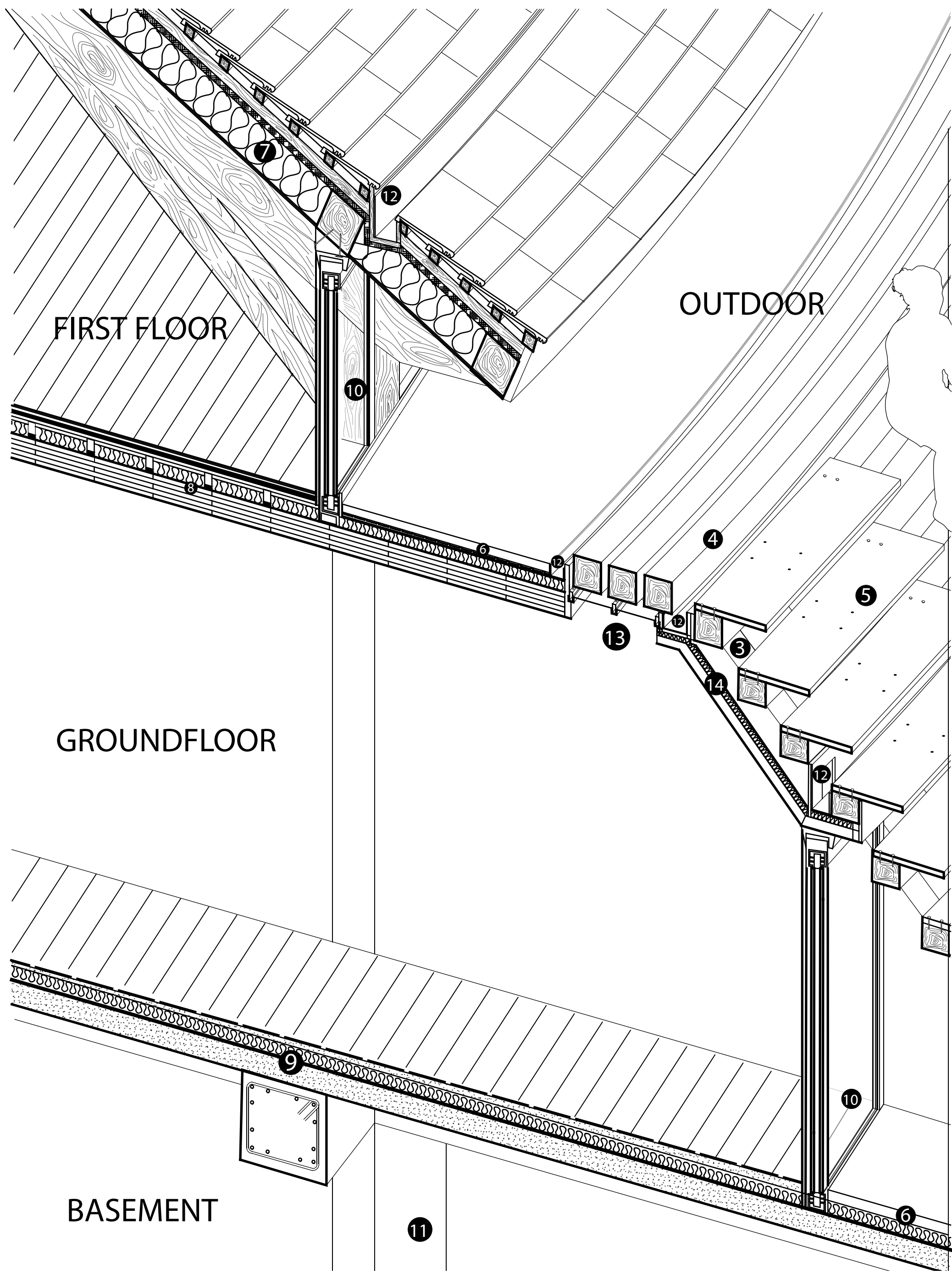
FIRST FLOOR - LIBRARY



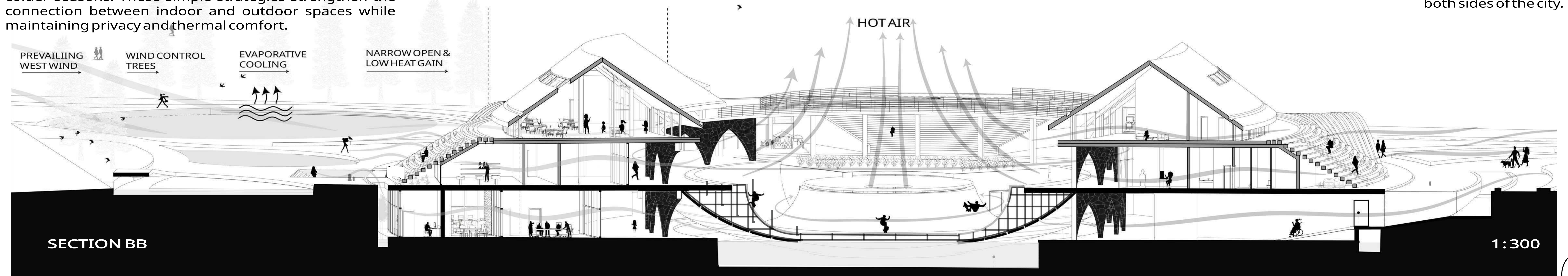
GROUND FLOOR - TEXTILES



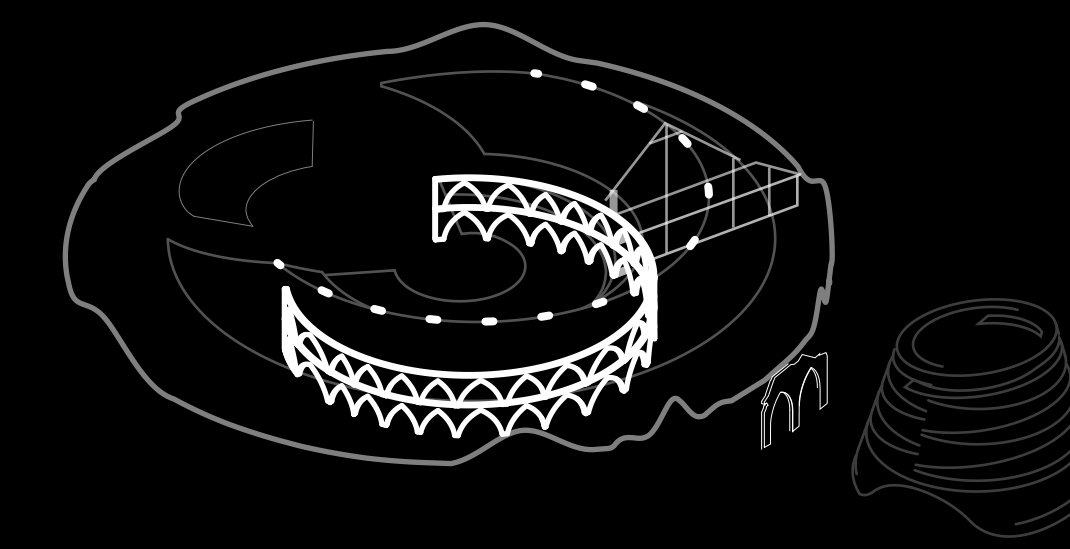
BASEMENT - RESEARCH



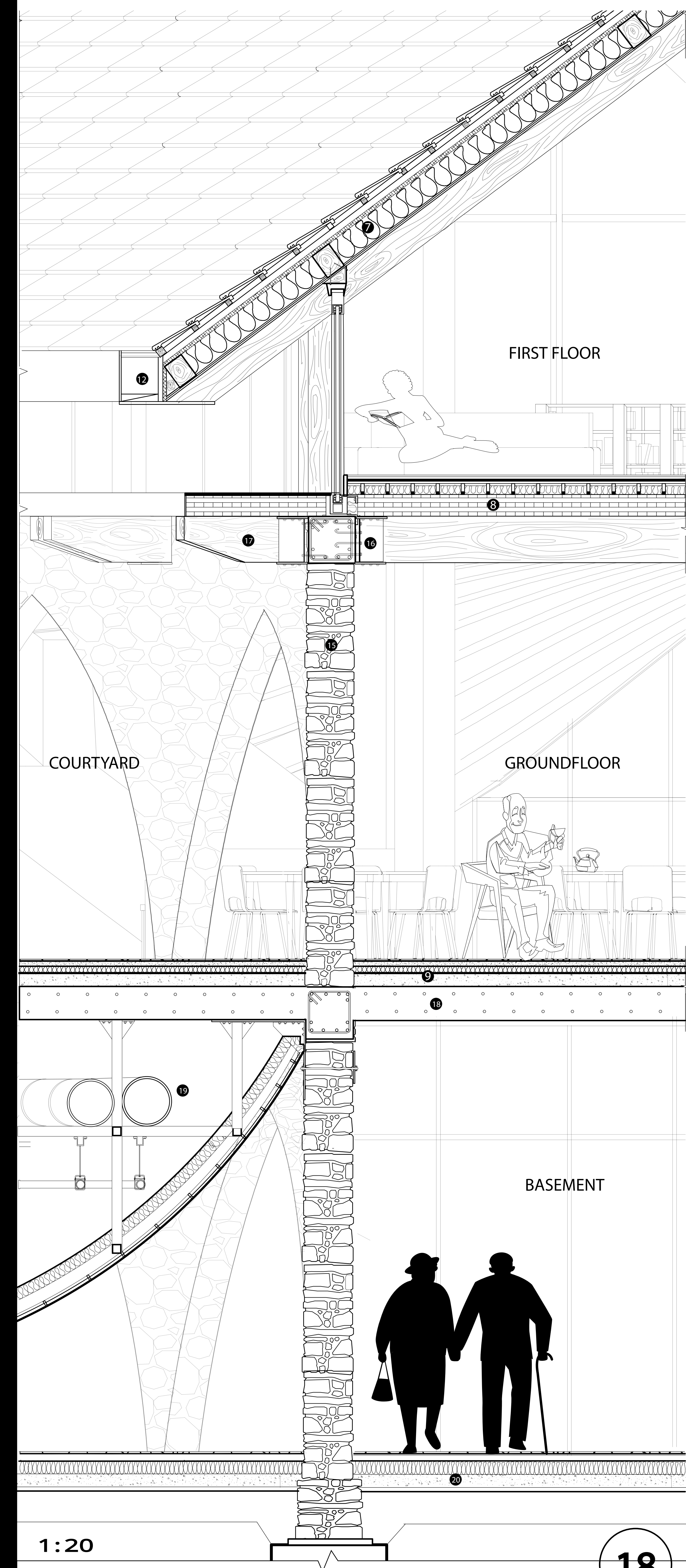
The courtyard-shaped system enhances natural ventilation by driving hot air upward and out of the building. Insulated walls, floors, and roofs maintain comfort during colder seasons. These simple strategies strengthen the connection between indoor and outdoor spaces while maintaining privacy and thermal comfort.



The inclusion of ramps and direct entrances makes circulation in and out of the space intuitive, fostering a continuous flow of users while reducing congestion in high-traffic areas. Users are given the choice to pause and observe or continue moving through the space, maintaining a seamless rhythm of movement while connecting both sides of the city.



Stone masonry becomes the heart of the community center, articulated with timber and concrete to blur the lines between different eras. This material dialogue creates continuity, grounding the space in memory while fostering a strong sense of belonging for all users.

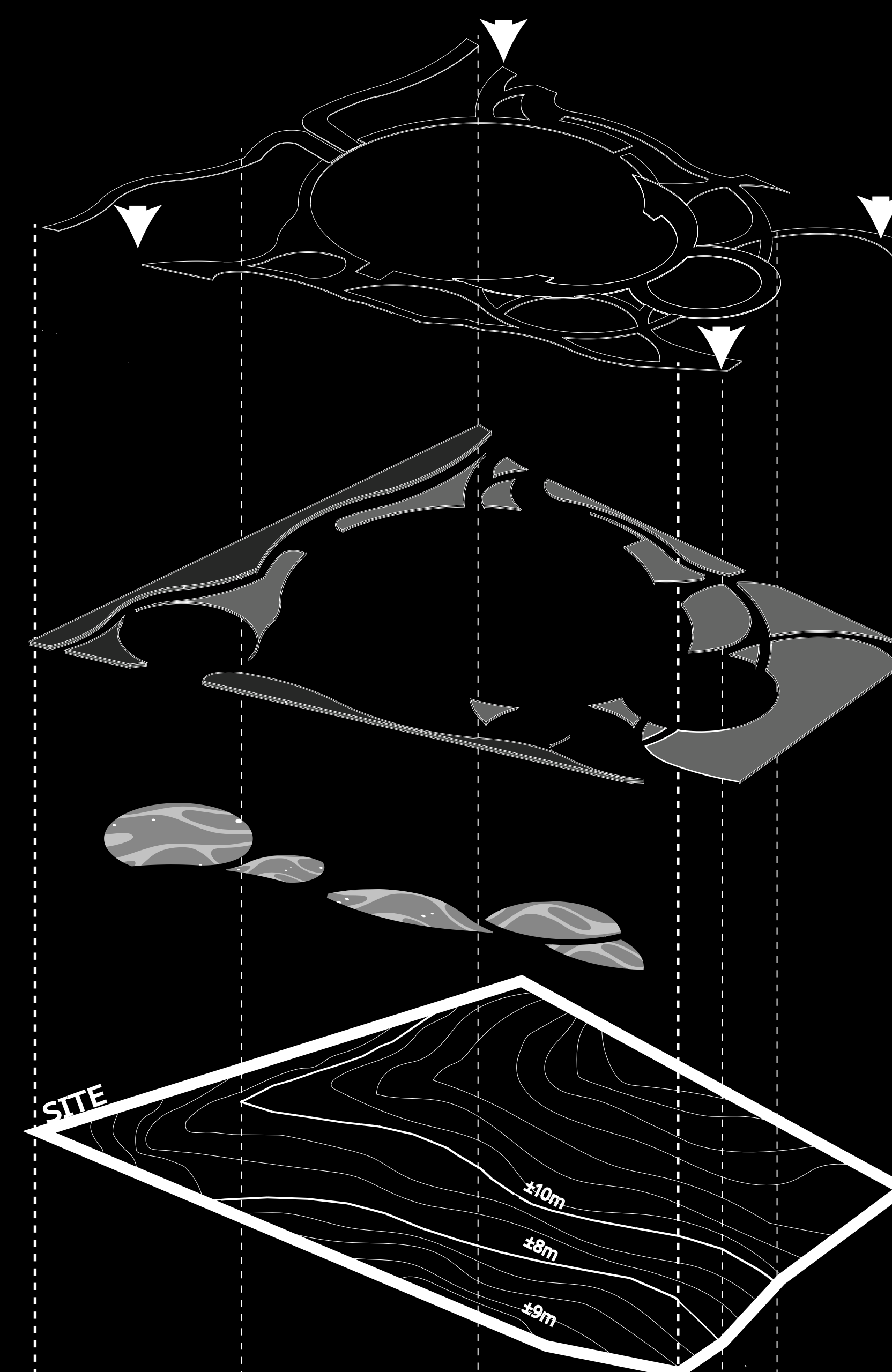


1:20

LANDSCAPE

ORGANIC PATH OF OLD CITY

This landscape is inspired by the organic urban pattern of the medieval city of Famagusta, with pathways derived from historic wetland formations. These paths are elevated to function as stormwater retention elements, creating an organic circulation network that integrates historical character with ecological performance.



The circulation paths follow the site's contours, promoting the gradual movement of stormwater and minimizing surface erosion. Four primary entrances are positioned along key desire lines identified on the site, ensuring intuitive access and strengthening connectivity with the surrounding urban context.

The grassland serves as a flexible community open space for picnics, relaxation, and informal recreation, fostering social interaction, family bonding, and outdoor community activities.

Five retention basins are placed within the site's natural depressions: a large circular basin followed by smaller leaf-shaped basins stepping down the slope. Water filters from one basin to the next.



BASEMENT- SOUTH ACCESS

A space that leaves its visitors with a strong sense of identity and belonging, reconnecting them with their cultural roots. While people bring life and meaning to the space, the space in turn leaves them inspired, replacing uncertainty with authenticity and fostering a deeper understanding of the future.



BASEMENT - GYM

We are Emerging into what is now, haunted and surrounded by echoes of the past, we keep our chins up and heads above water, facing an uncertain future with quiet resilience. In a breath of relief, we find reflection and identity—this is who we are.

MATERIALITY

- ① • Consealed Steel stringer
- ② • Guesseted Steel stiffener
- ③ • Rakar Timber beam
- ④ • Curved Timber tie beam with joint slotted-in-steel plate
- ⑤ • Cedar treads, sealed finish
- ⑥ • Planting system
- ⑦ • ROOF
 - Rafter
 - Infill Wooden Panel Ceiling
 - Purlin
 - Cavity insulation
 - Wood fibre insulation
 - Breather membrane
 - Timber frame
 - Clay roof tiles
- ⑧ • FLOOR -CLT
 - Wood flooring
 - Foam underlay
 - Fibreboard
 - Accoustic matting
 - Fibreboard
 - Floor joists
 - Insulation
 - Sylodyn
 - CLT Slab
- ⑨ • FLOOR -RC1
 - Concrete slab
 - Membrane
 - Insulation
 - membrane
 - Screeding
 - Flooring

- ⑩ • Sound proof glazing
- ⑪ • Reinforced Concrete beam
- ⑫ • Aluminium Gutter
- ⑬ • Photovoltaic glass skylight with drainage system
- ⑭ • CLT SHADE
 - W.P. wood pannel
 - Memebrane
 - Insulation
 - CLT
- ⑮ • Load-bearing Stone masonry Wall
- ⑯ • Steel hanger - (beam)
- ⑰ • Timber beam
- ⑱ • RC Beam
- ⑲ • Skating ramp
 - Sprayed concrete
 - Rebar
 - Rebar hangers
 - 2D steel truss system
 - Membrane
 - Cavity insulation
 - fire-proofing
 - M.E.P.
- ⑳ • FLOOR -RC2
 - Foundation Beam
 - Infill
 - Membrane
 - Concrete Slab
 - Insulation
 - Membrane
 - Screeding
 - Stone tile flooring

