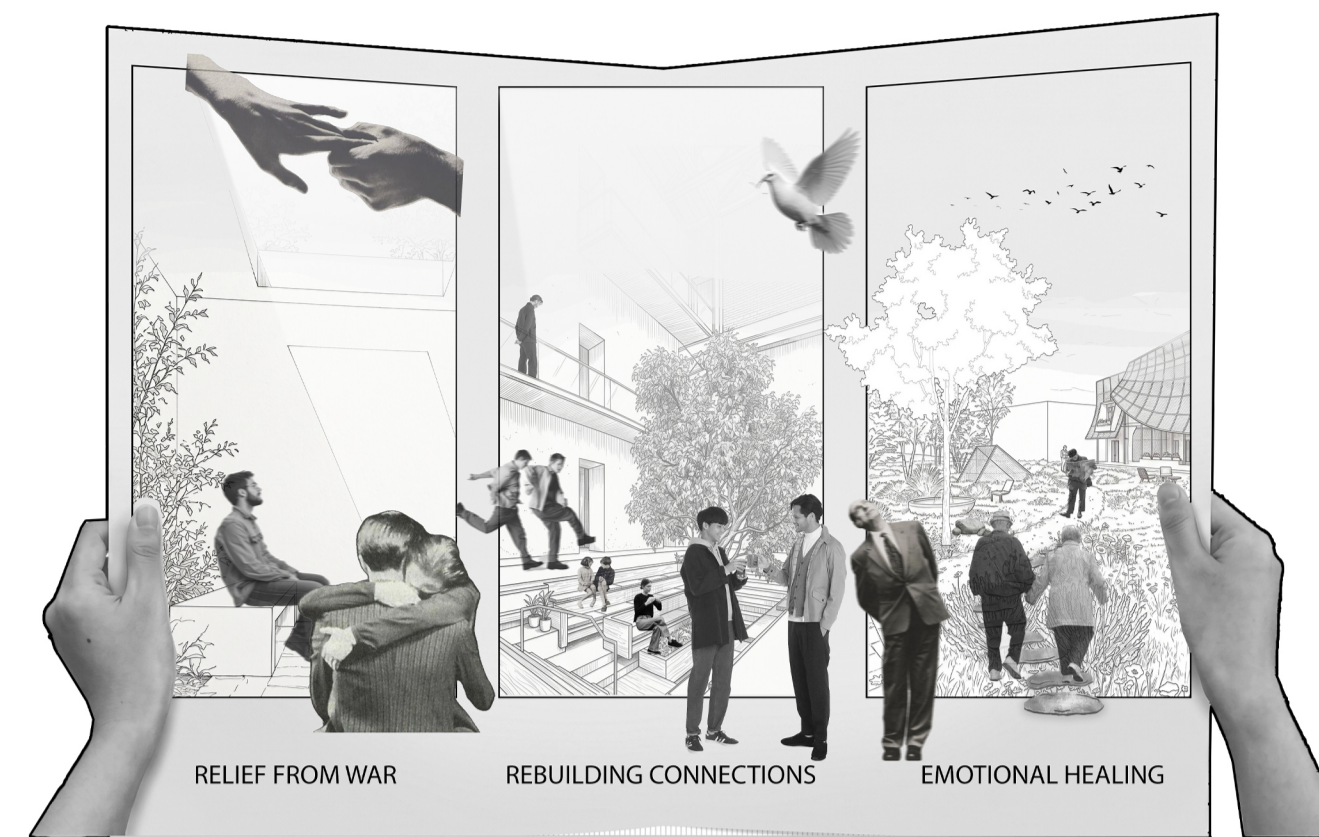


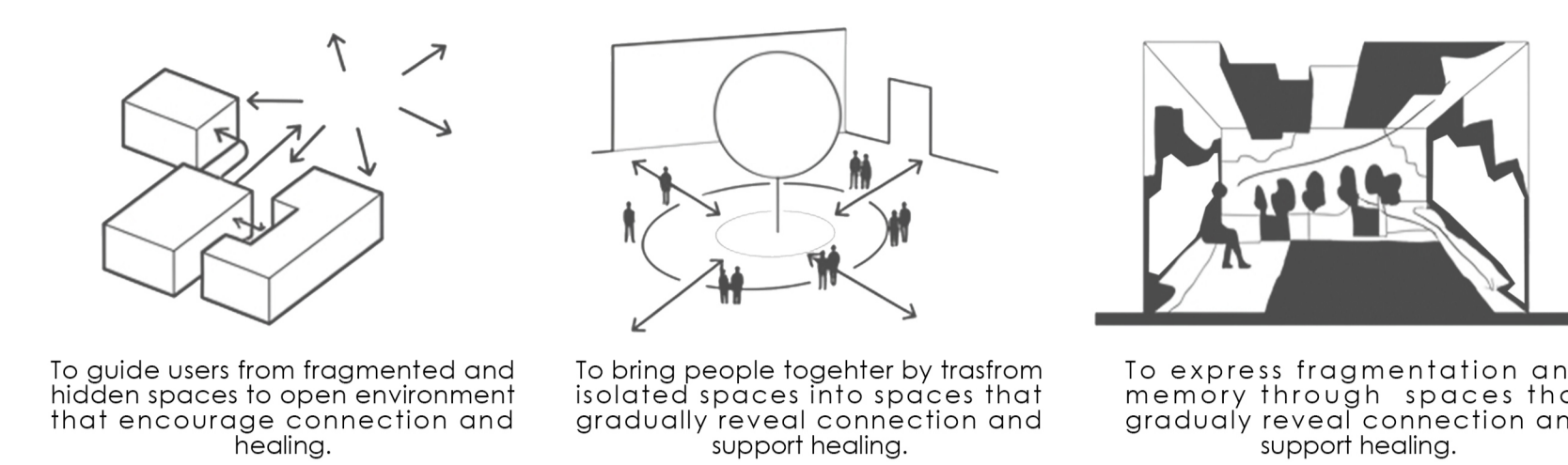


DESIGN CONCEPT

The project is inspired by the fragmentation caused by war, where spaces represent loss separation and hidden memories. Through a gradual transition from enclosed to open environments, the design guides users from isolation towards collective interaction. The journey encourages reflection, rebuilding connections and emotional healing.



DESIGN AIM



DESIGN IDEA

The Memorable Social Hub is envisioned as a deeply transformative sanctuary of healing, reconciliation, and active reconnection, intentionally designed to transmute the physical and psychological scars of war into profound opportunities for vibrant social interaction, quiet reflection, and collective memory.

Inspired by the architectural concept of layered connectivity, the overarching design intentionally establishes multiple, overlapping tiers of engagement: ranging from immediate visual triggers and dynamic social spaces to profound emotional resonances and deeply personal internal

This carefully structured stratification allows visitors to navigate the site at their own pace, gradually and safely reconnecting with both the surrounding community and the site's complex historical narrative.

Far from being a static monument to tragedy, the building actively functions as a contemporary social catalyst; it honors and preserves the poignant memories of the past while simultaneously fostering an optimistic, forward-looking environment where new experiences, shared stories, and resilient relationships can organically emerge and flourish.

DESIGN DEVELOPMENT

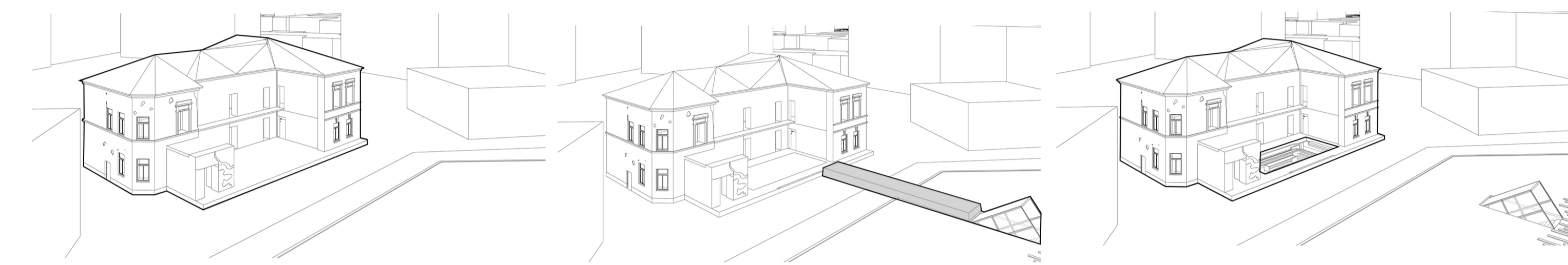


Diagram 1 **Existing Site Condition**
War-damaged structure with a fragmented central zone.

Diagram 2 **Journey of Fragmentation**
A tunnel-like passage symbolizes the experience of fragmentation and transition.

Diagram 3 **Reconnection Through Water**
An ascending path integrates water features, representing reconnection, while rainwater is drawn into the interior.

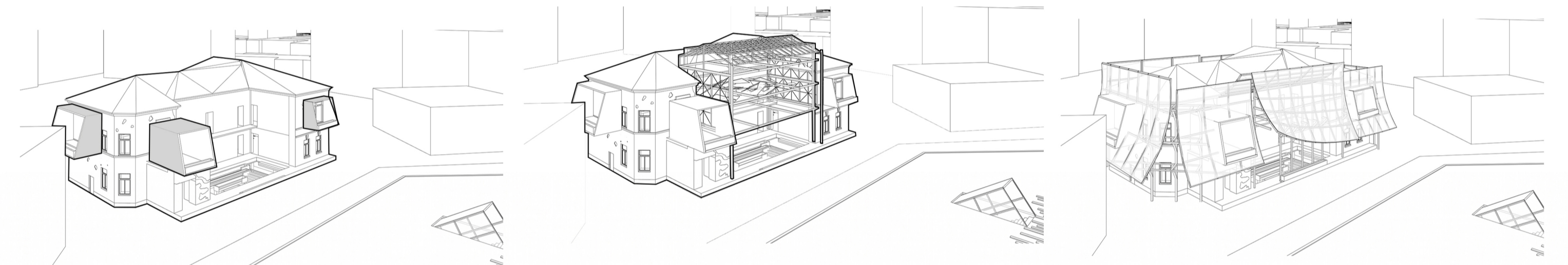
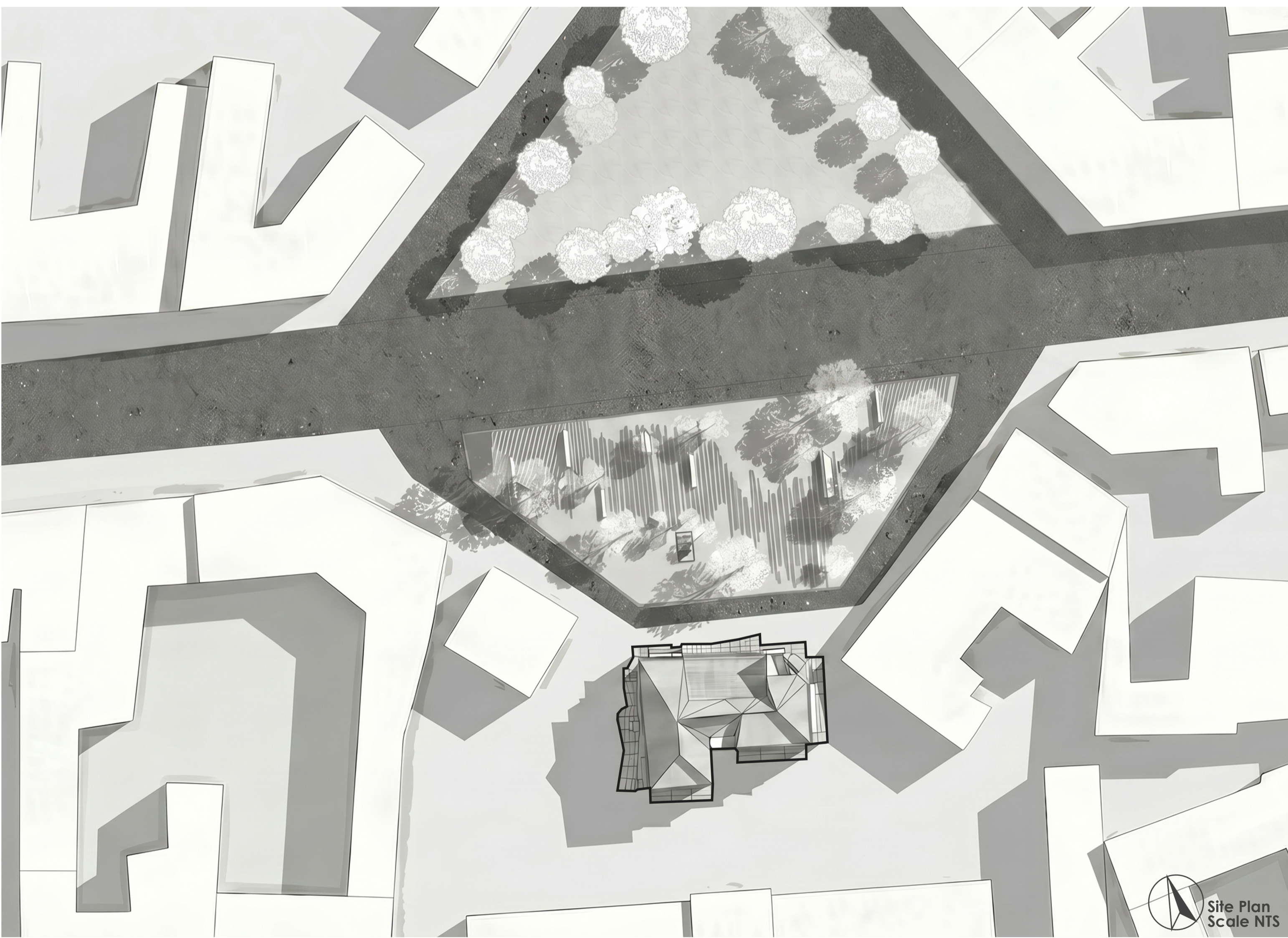


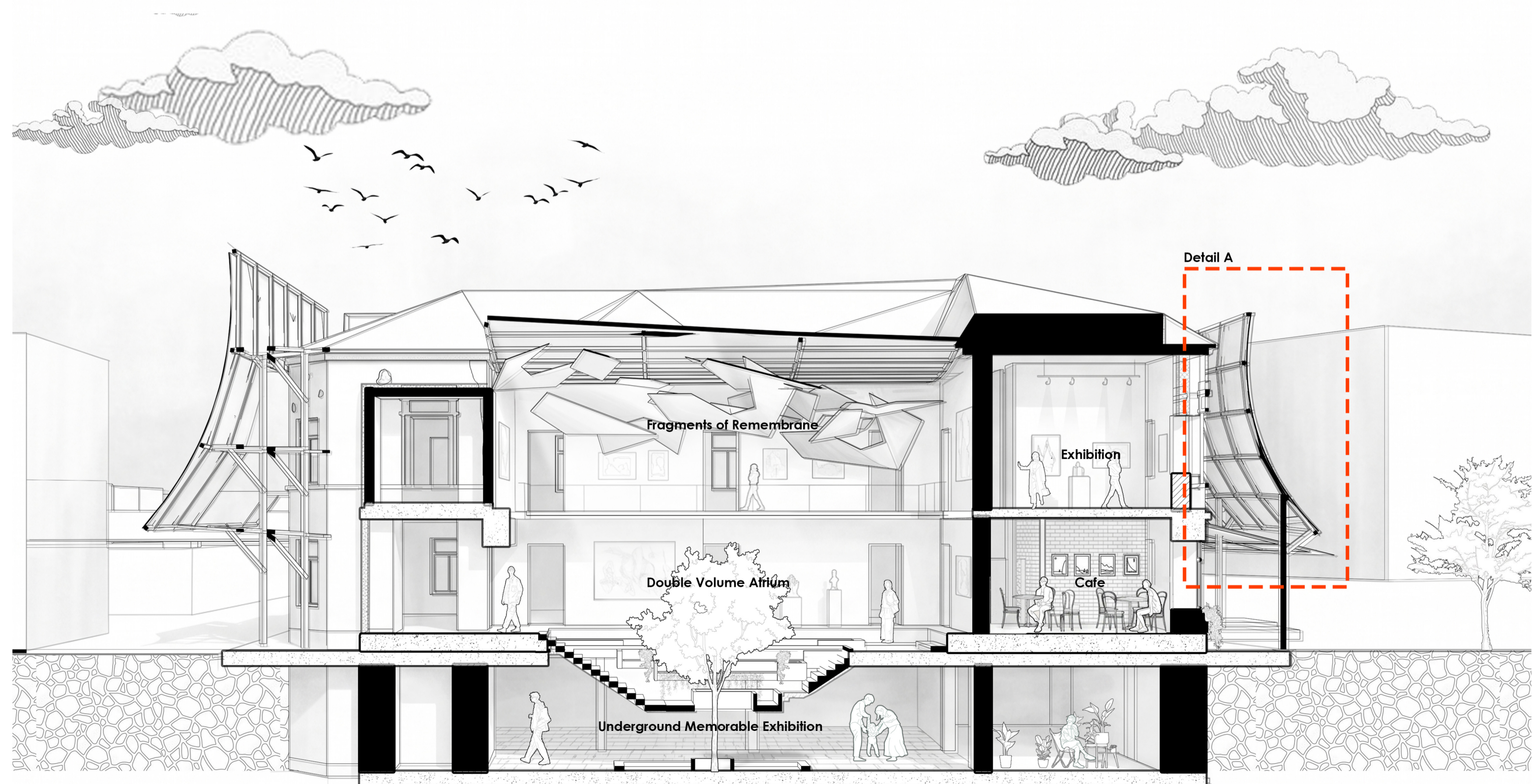
Diagram 4 **Extending Connections**
The platform extends outward, creating a physical link between the building and its surroundings.

Diagram 5 **Framed Transparency**
Glass panels frame views between interior and exterior, creating a dialogue between visibility and concealment.

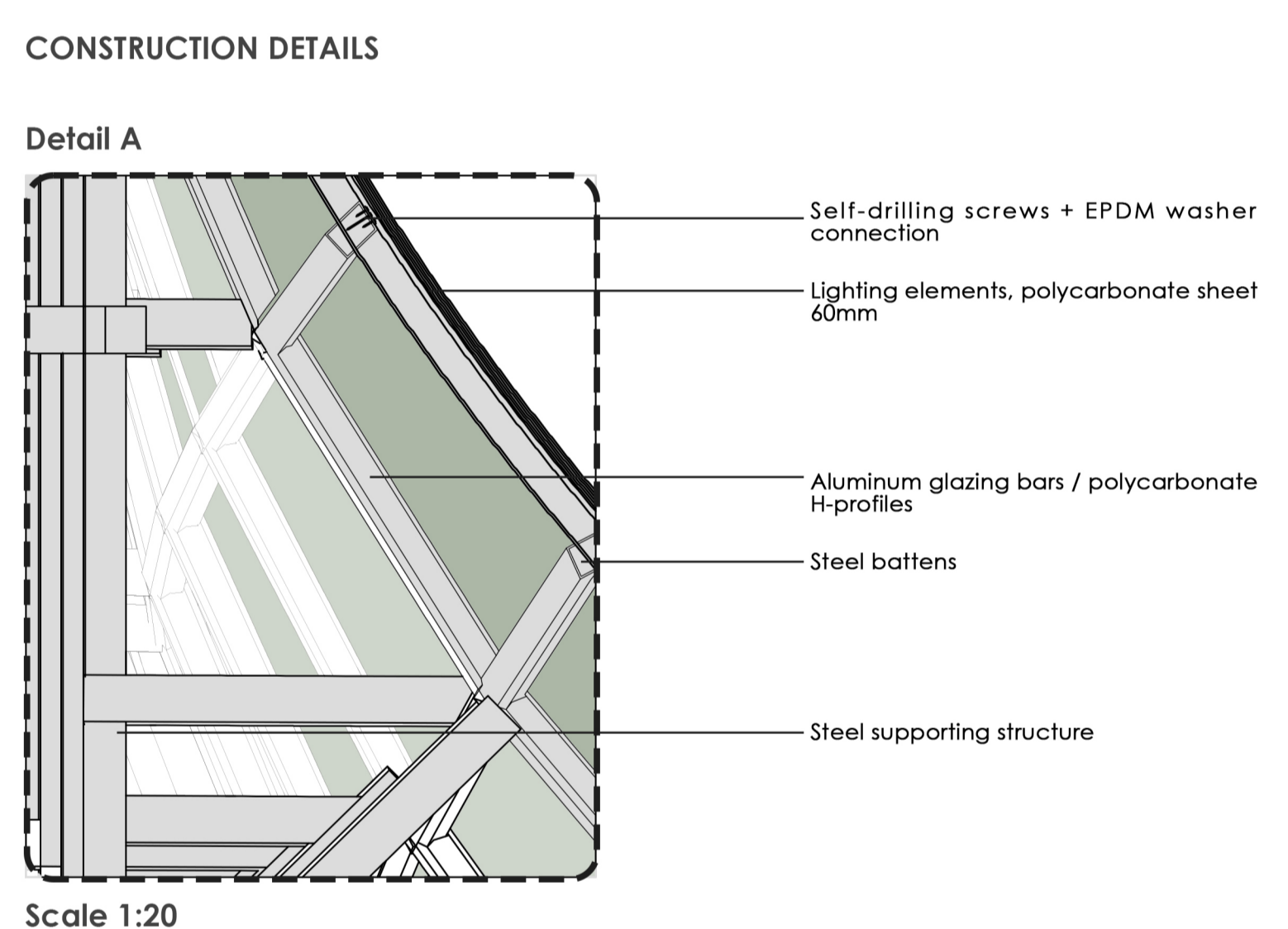
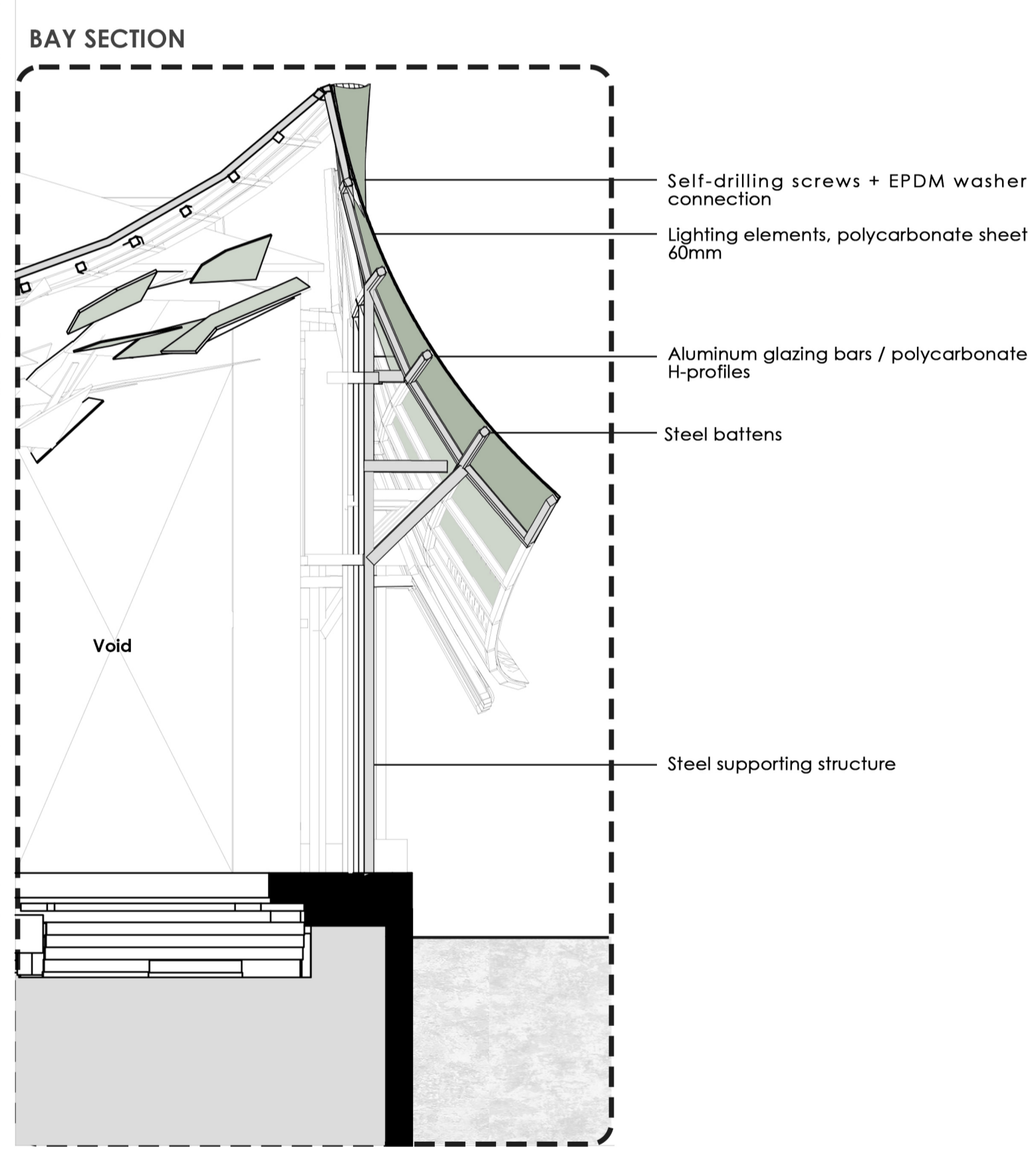
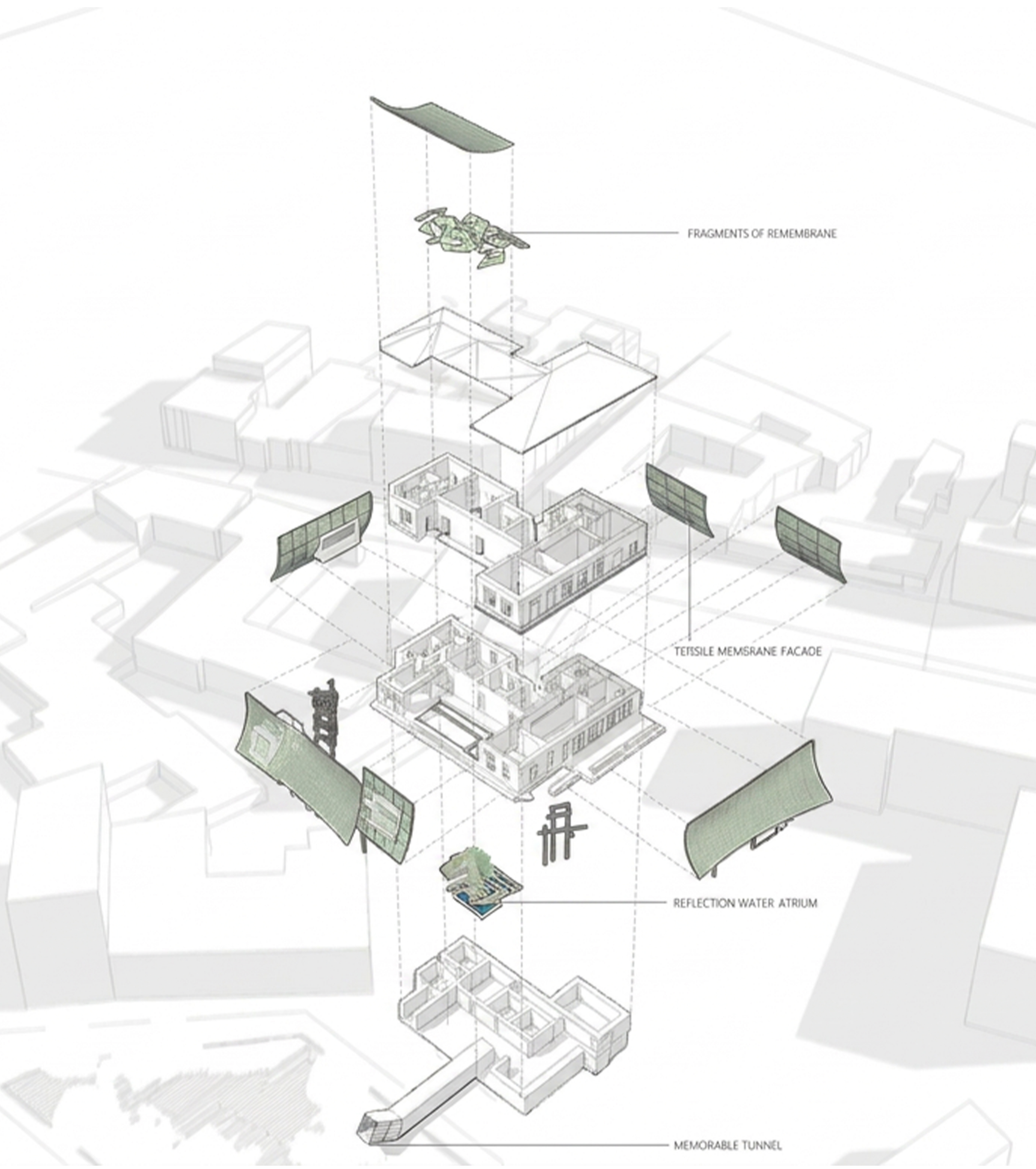
Diagram 6 **Unified Architectural Envelope**
A continuous curved façade wraps the building, extending the front façade language across the entire form.



Site Plan
Scale NTS



Detail A



MATERIAL AND CONSTRUCTION CHOICES

The project adopts a renovation and adaptive reuse strategy that clearly distinguishes the contemporary intervention from the historical structure. Modern materials such as steel, glass, and polycarbonate are selected for their durability, lightweight construction, and ability to create transparent and flexible spaces.

The deliberate contrast between the modern materials and the preserved historic fabric allows visitors to clearly understand the evolution of the building over time, celebrating both its heritage and its new role as a vibrant social hub.

Steel framing enables efficient renovation with minimal impact on the existing building, while large glazed areas enhance visual connectivity and encourage social interaction. Polycarbonate cladding provides weather resistance, thermal performance, and diffused lighting effects while reinforcing the design concept of visibility and mystery.

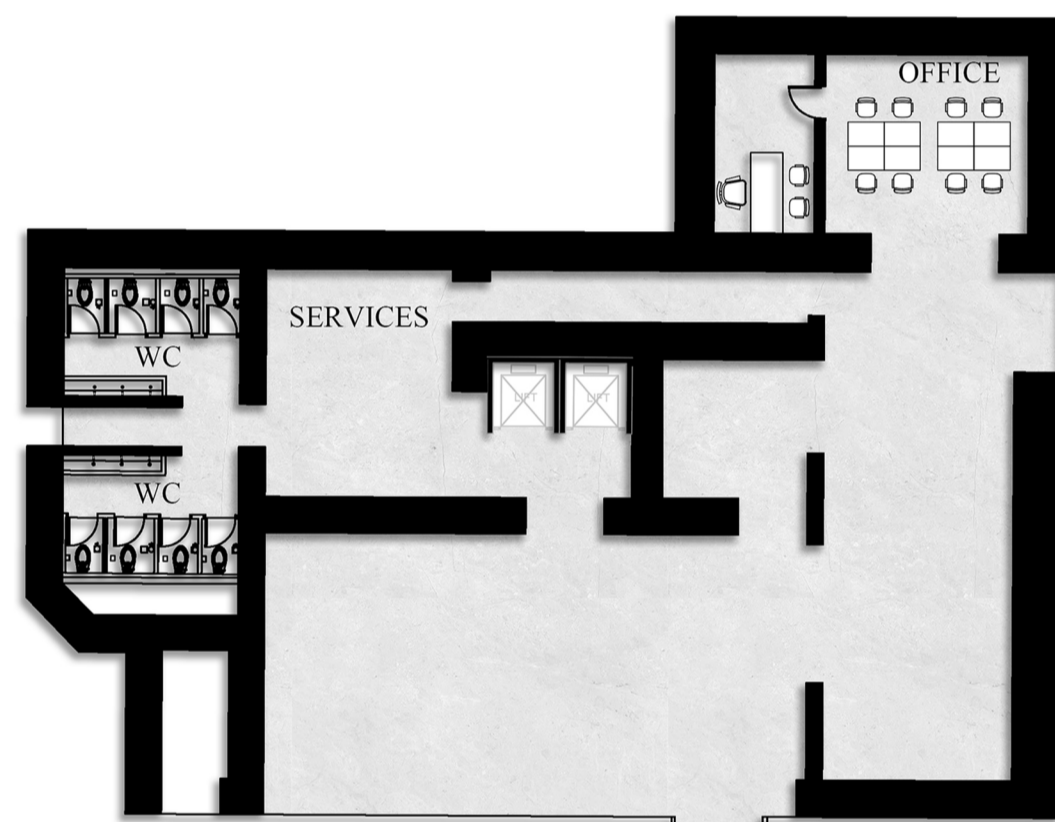




Exhibition Area



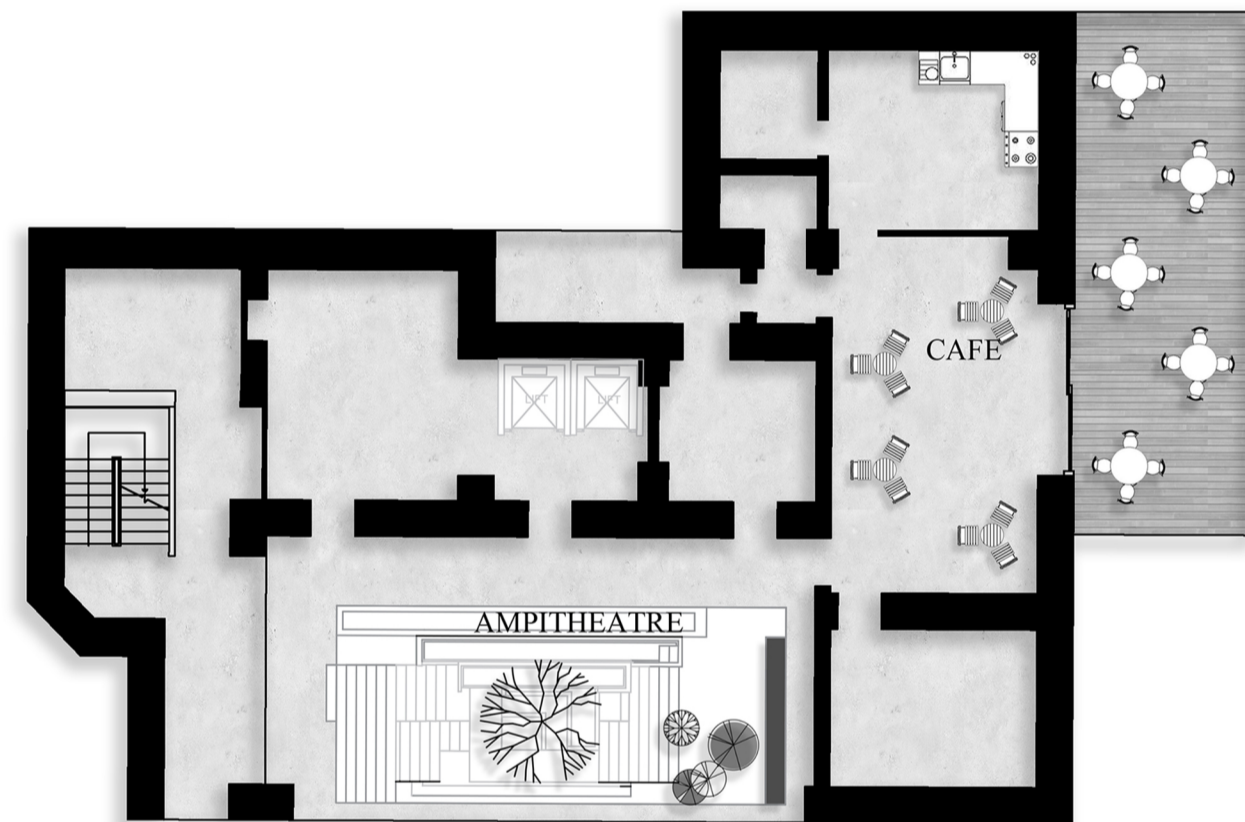
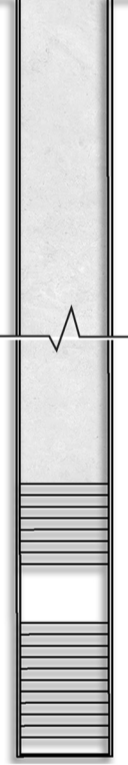
Multipurpose Area



Basement Floor Plan Scale NTS

The spatial journey begins beneath the surface, where the basement houses a deeply moving Memorial Tunnel designed as a symbolic transition from the outer world into the structure. This subterranean passage serves as a seamless link, directly connecting the sunken outdoor gardens and landscaped commemorative grounds to the building's interior, vastly improving visitor accessibility.

Passing through this tunnel allows visitors to escape urban noise, moving alongside raw, historic foundation walls that echo the site's past. The intentional integration with the landscape lets natural light bleed into the tunnel entrance, guiding people effortlessly into the hub while preparing them emotionally for the spaces above.

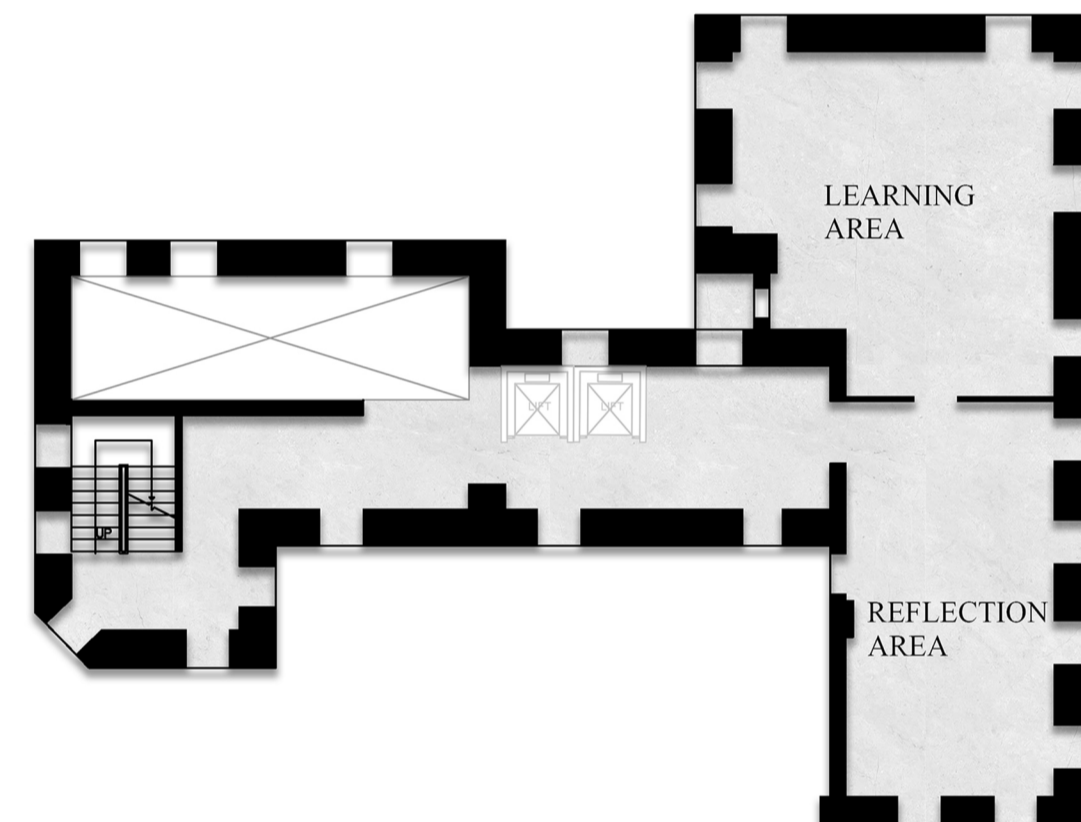


Ground Floor Plan Scale NTS

Upon ascending from the basement, visitors emerge into a high-energy public forum on the ground floor, engineered to maximize social interaction.

The architectural centerpiece is a grand, double-volume atrium that creates a dramatic sense of openness and vertical connectivity. Nestled within this soaring volume is a public amphitheater with terraced seating, serving as an informal gathering space, lecture steps, or a venue for community performances.

Flanking this active core is a lively dialogue café and an expansive, highly adaptable multipurpose area for public use, easily reconfigured to host local artisan markets, cultural exhibitions, and neighborhood forums.



First Floor Plan Scale NTS

In contrast to the bustling ground level, the first floor transitions into a protected environment designed for emotional recovery and mutual support.

This level is divided into three interconnected zones: a reflection area, a learning area, and a dedicated sharing area. The reflection area offers quiet, introverted pockets framed by diffused light from the polycarbonate façade. The learning area functions as an open resource space for educational materials regarding peace-building.

Most importantly, the sharing area is designed as a safe, intimate sanctuary for individuals wishing to vocalize their trauma, share oral histories, or engage in collective coping mechanisms.

DESIGN APPROACH

The core architectural approach is rooted in the evocative, dualistic concept of "Can and Can't See", a philosophy where structural transparency and deliberate material obscurity are meticulously balanced to evoke a sense of curiosity, anticipation, and gradual discovery.

The external façade utilizes high-performance translucent polycarbonate panels that act as a visual veil, partially revealing the silhouettes of human activities occurring within the building's interior volumes, thereby subtly inviting passersby to explore, question, and uncover the spaces that lie just beyond their

This layered visual experience serves as a direct architectural metaphor for the fragmented, often elusive nature of memory in a post-war context, where certain historical truths remain vividly visible while others are obscured by time, waiting to be gradually rediscovered and integrated.

By establishing this stark contrast between absolute transparency and intentional concealment, the design strengthens the ontological connection between present-day community activities and the solemn historical significance of the pre-existing structure, encouraging users to actively engage with both the physical building and the ethereal memories embedded within its walls.

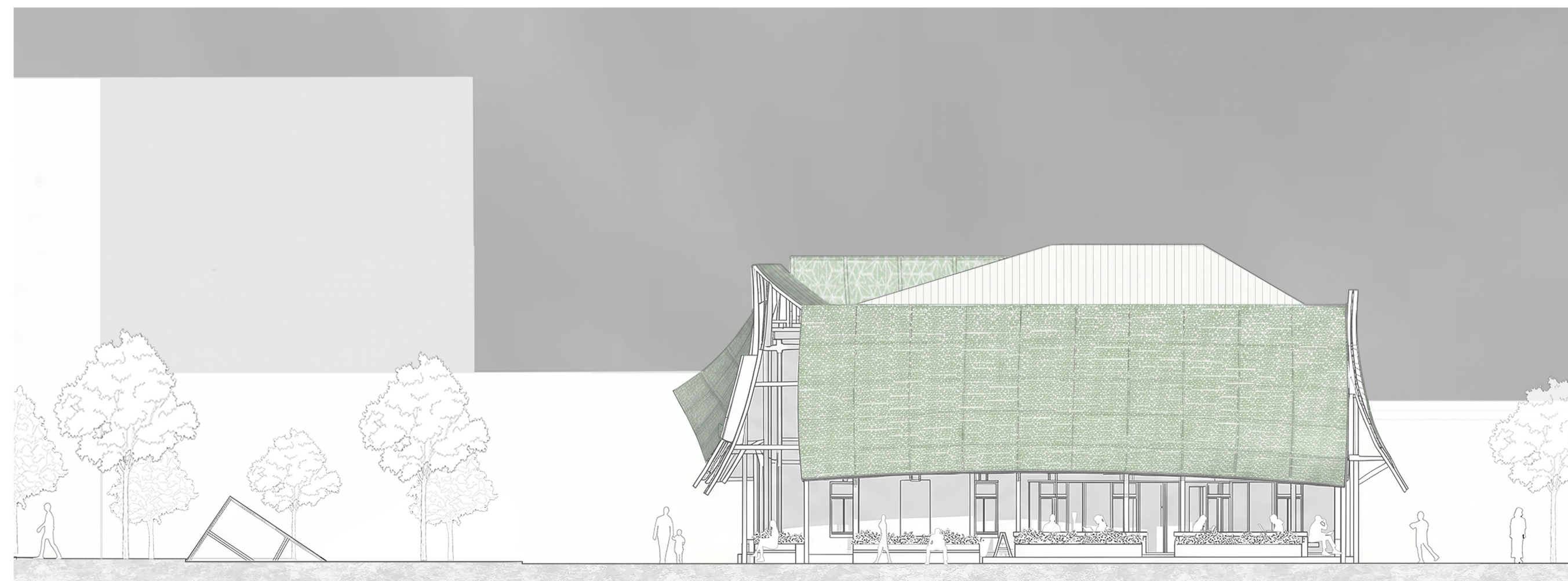
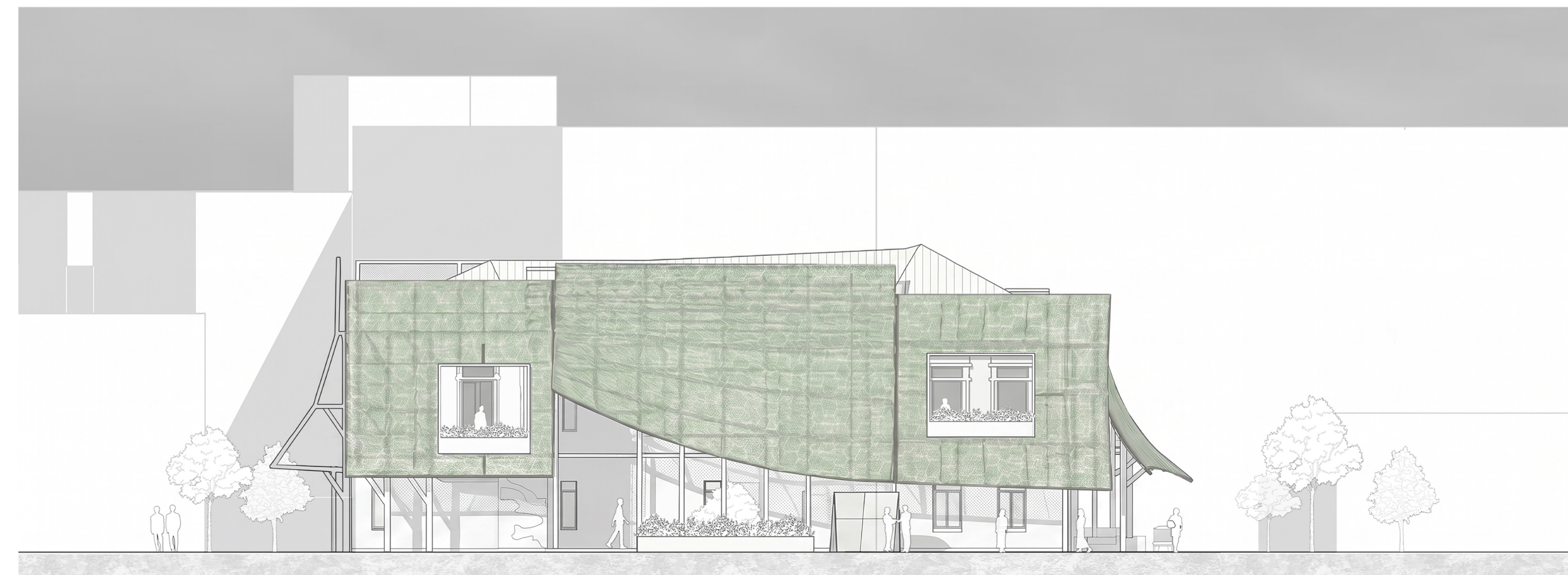
BUILDING USE AND PROGRAMMATIC DISTRIBUTIONS

Functioning as a multi-generational civic anchor, the building's internal programming is meticulously zoned to balance active community revitalization with quiet, introspective historical remembrance. The ground level is dedicated to high-traffic, highly public social uses, featuring a welcoming double-height community lobby, an open-concept dialogue café, and flexible multi-purpose event spaces designed to host neighborhood gatherings, cultural forums, and local markets.

As visitors ascend through the building via a centrally located, sculptural circulation spine, the programming transitions into semi-private and contemplative zones, including collaborative workshop rooms for local artisans, counseling and therapy suites for psychological healing, and a digital archive library dedicated to preserving local oral histories.

The top tier of the intervention culminates in a serene, top-lit memorial gallery and an open-air reflection terrace, offering panoramic views of the surrounding cityscape.

This thoughtful vertical progression ensures that the building seamlessly transitions from a high-energy social catalyst at its base into a deeply respectful, quiet sanctuary for personal and collective reflection at its peak, accommodating a diverse cross-section of daily civic life.



FACADE DESIGN AND APPROACH

The façade is designed as a semi-transparent envelope composed primarily of polycarbonate panels supported by a lightweight steel framework.

During the day, the façade filters natural light and creates soft silhouettes of people and activities within, generating curiosity and reinforcing the concept of layered connectivity.

At night, the building transforms into a glowing lantern, symbolizing hope, remembrance, and community. The translucent quality of the polycarbonate allows the historical building elements to remain partially visible behind the new intervention, creating a dialogue between old and new while preserving the site's identity.