

9th Century BC
Chattogram functioned as an important **MARITIME PORT** along the Silk Route, where Arab traders and other merchants established early trade links.

1338 - Sultanate Period
Chittagong enters Sultanate rule under Fakhruddin Mubarak Shah; Islam spreads with arrival of Aulia Badr Shah and establishment of his mazar in Chaktai area.

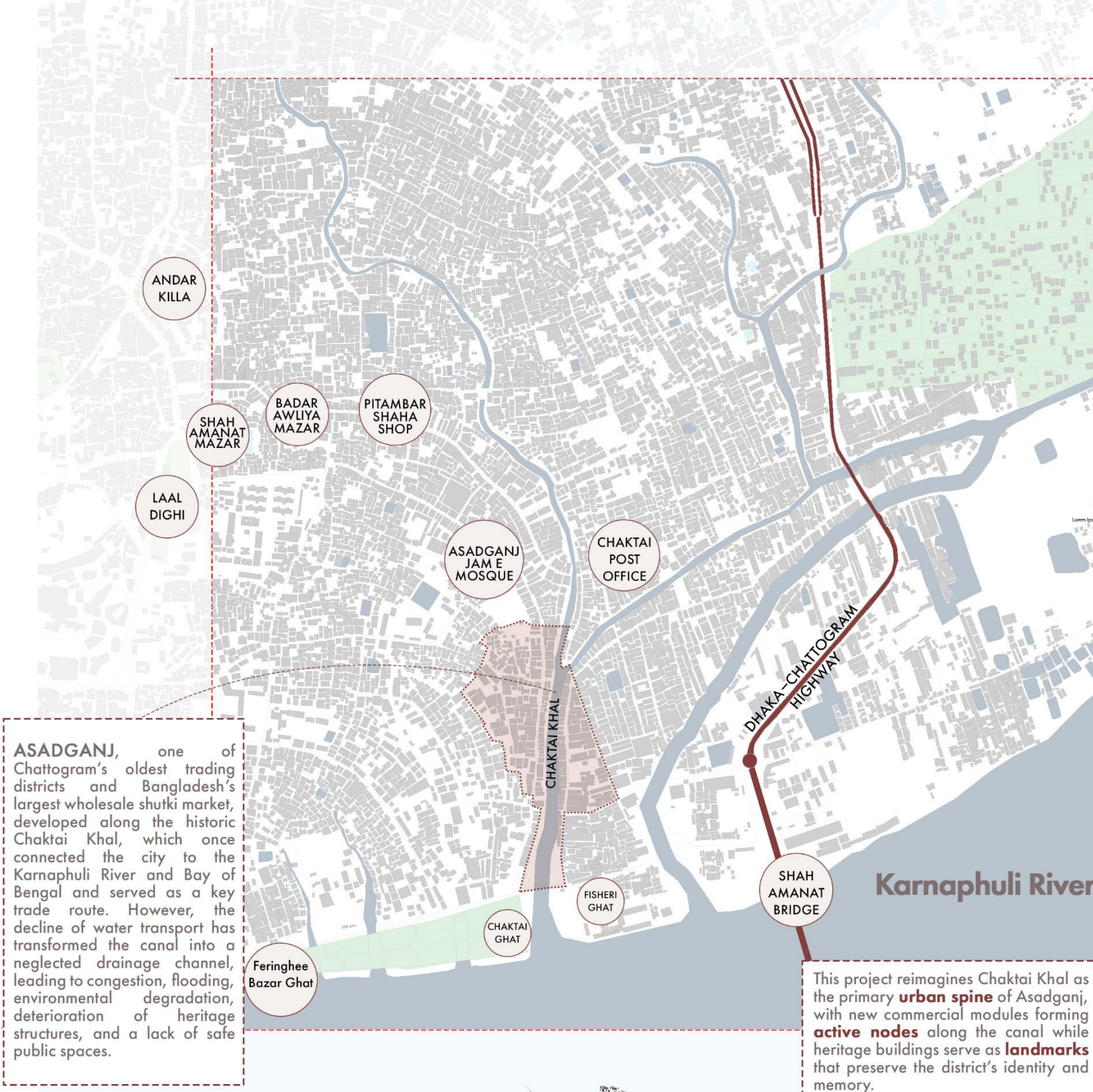
1666 - Mughal Period (Islamic Architecture)
Shaista Khan restores Mughal control; Islamic architecture flourishes with domes, floral motifs, geometric patterns, and marble ornamentation in this area.

1760 - Colonial Period
British rule introduces Indo-Saracenic architecture blending local forms with symmetry, arches, columns, and porticos.

1863 - Municipal Formation
Chittagong Municipality is established, beginning structured urban governance.

1947 - Post-Colonial Transition
End of British rule brings emergence of national identity and transitional urban growth.

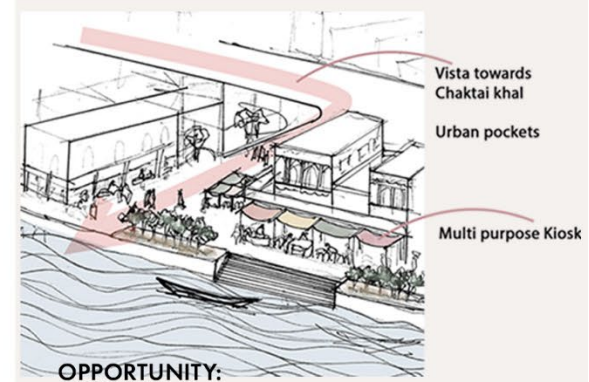
21st Century
Rapid urbanization, vertical growth, and glass-façade commercial development dominate the cityscape.



- STRENGTH:**
- Defined skyline (1-5 storied)
 - Human scale of buildings create sense of community
 - Interesting facade of old buildings
 - Streetfront verandas act as pedestrian shed



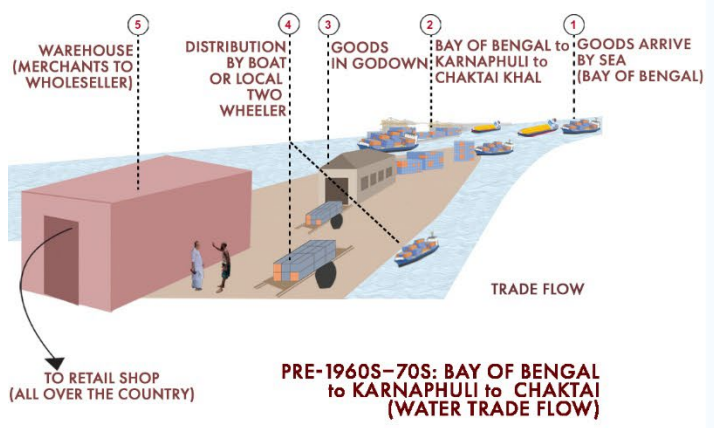
- WEAKNESS:**
- Narrow roads blocked with heavy vehicles
 - Poor drainage system
 - Low maintenance of Old buildings
 - Waterlogging



- OPPORTUNITY:**
- Reviving canal with green walk & activities
 - Transport & recreation route
 - Conservation of significant buildings
 - Coherent streetscape
 - Parking & loading unloading space
 - Rethinking future wholesale market



- THREAT:**
- New vulnerable warehouses block canal access and view
 - Encroachment and pollution of the canal
 - Deterioration of historic elements



-Informal Structures Severing Bazaar & Waterfront Interface

-Heritage Assets in Decay

-Canal Encroachment

-Public Realm Squeezed Out

-Abrupt Commercial Growth

-Canal Reduced to Drainage Channel

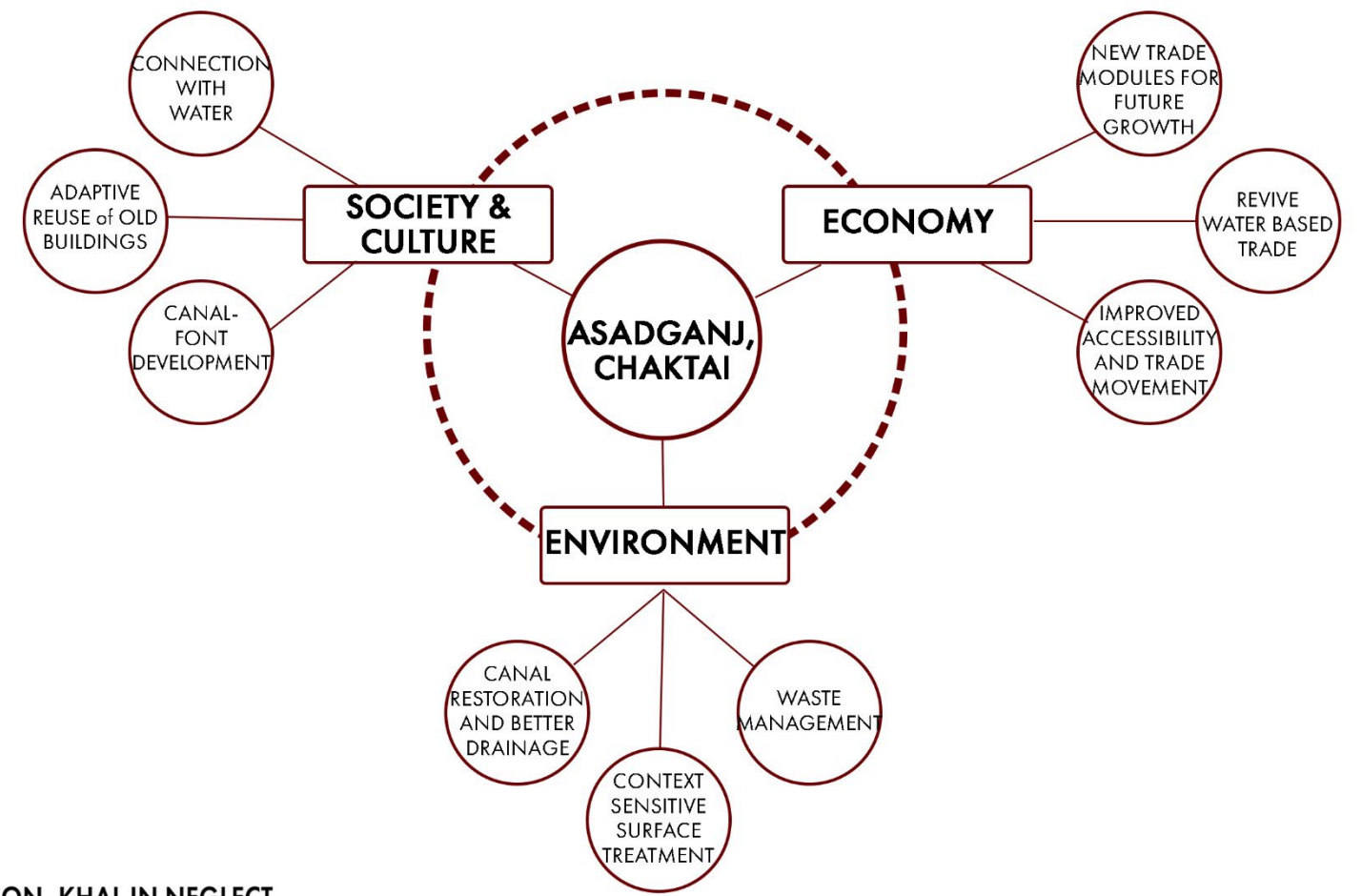
-Fragmented Loading & Unloading Practices

This project reimagines Chaktai Khal as the primary **urban spine** of Asadganj, with new commercial modules forming **active nodes** along the canal while heritage buildings serve as **landmarks** that preserve the district's identity and memory.



SOURCE OF IMAGE: SITE VISIT & NEWSPAPER

Severe traffic congestion occurs in the site due to mixed load/unload, pedestrian movement, narrow streets, and uncontrolled loading activities. The site also faces recurring drainage challenges during peak rainfall periods. Seasonal waterlogging and flooding result from poor drainage capacity, low-lying terrain along the khal, and high surface runoff from paved areas.



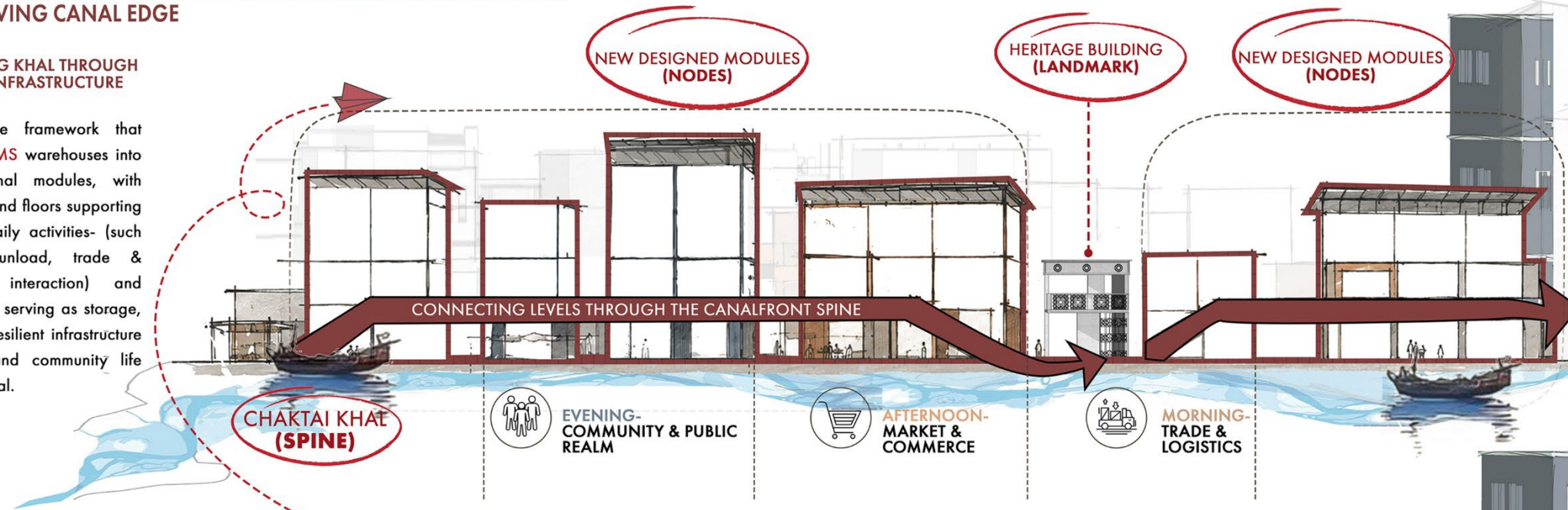
CURRENT TRADE FLOW



FROM WAREHOUSES OF RISK, STREETS OF CONGESTION, KHAL IN NEGLECT TO REVIVED LANDMARKS, ACTIVE TRADE NODES, STREETS OF FLOW, AND A LIVING CANAL EDGE

RECLAIMING KHAL THROUGH ADAPTIVE INFRASTRUCTURE

An adaptive framework that **TRANSFORMS** warehouses into multi-functional modules, with flexible ground floors supporting changing daily activities- (such as load unload, trade & community interaction) and upper levels serving as storage, creating a resilient infrastructure for trade and community life along the khal.



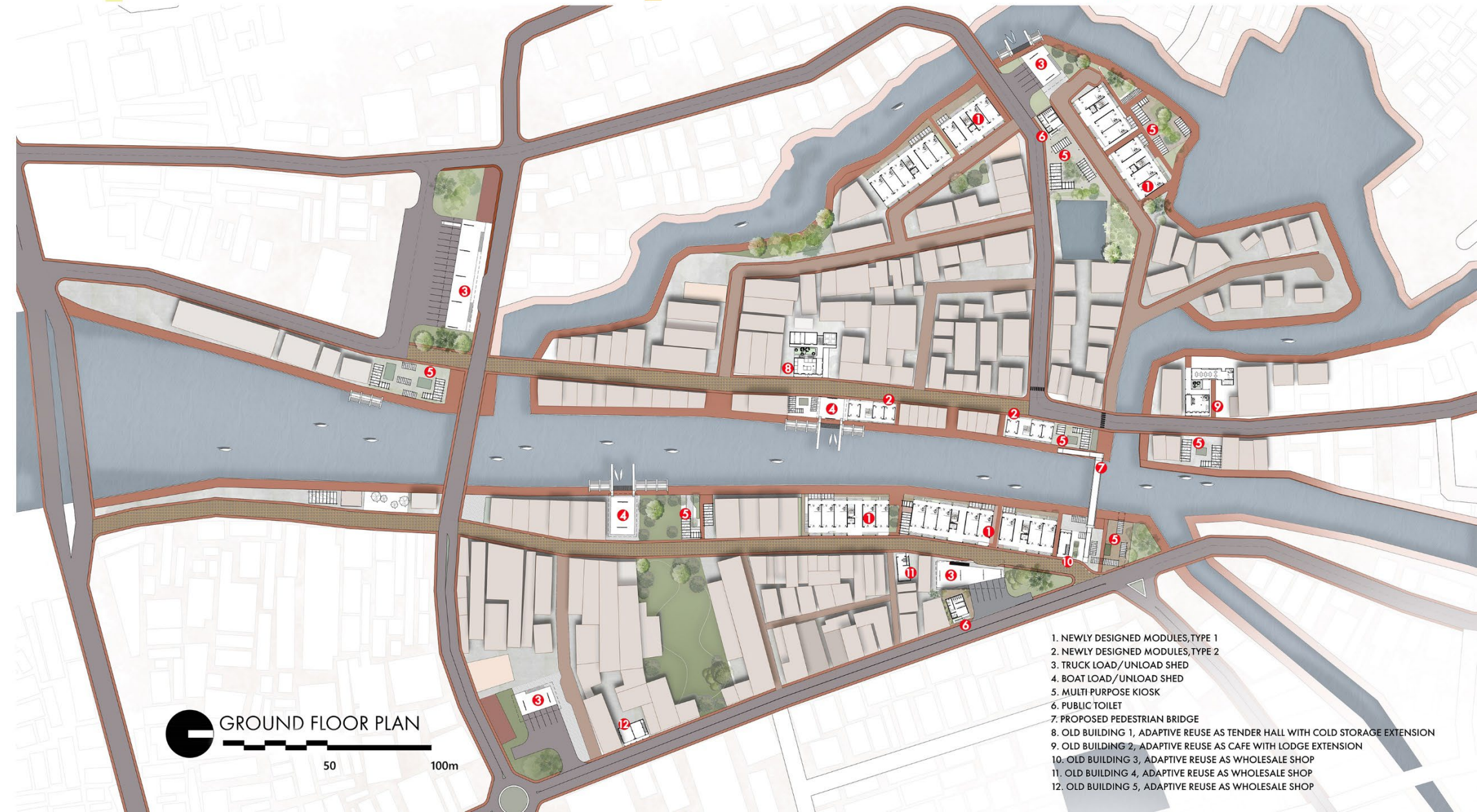
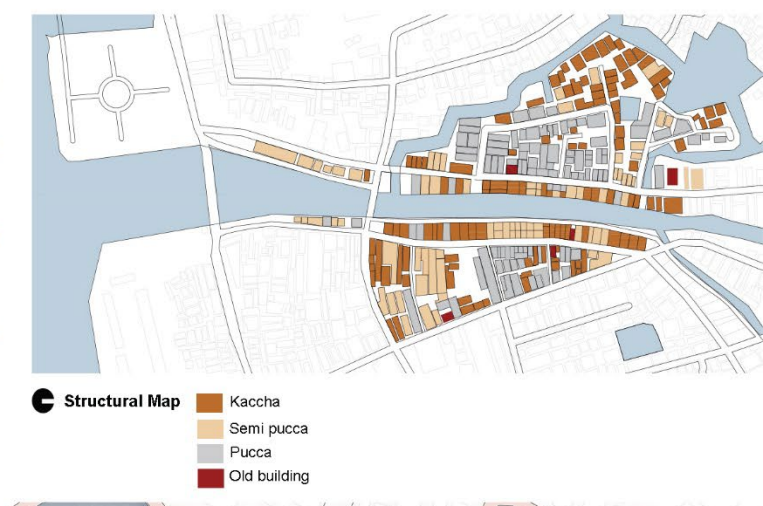
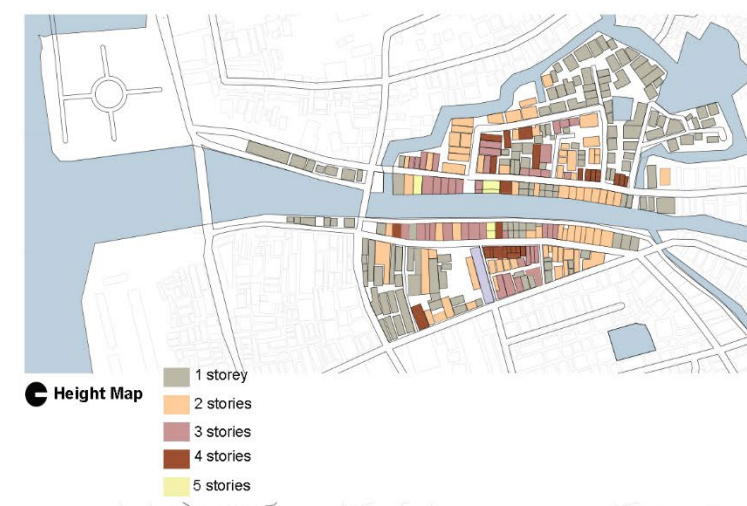
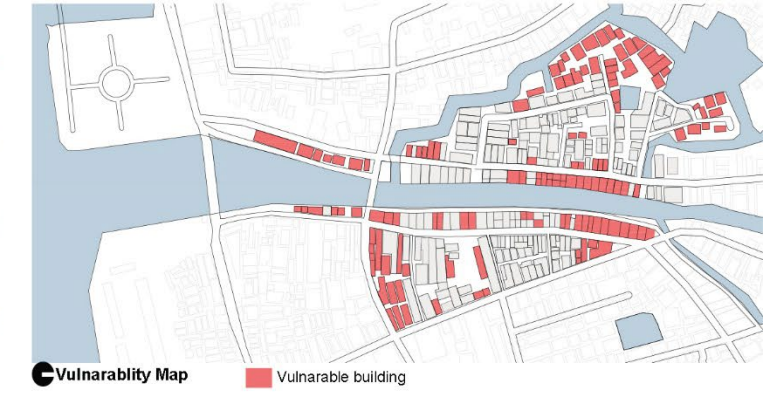
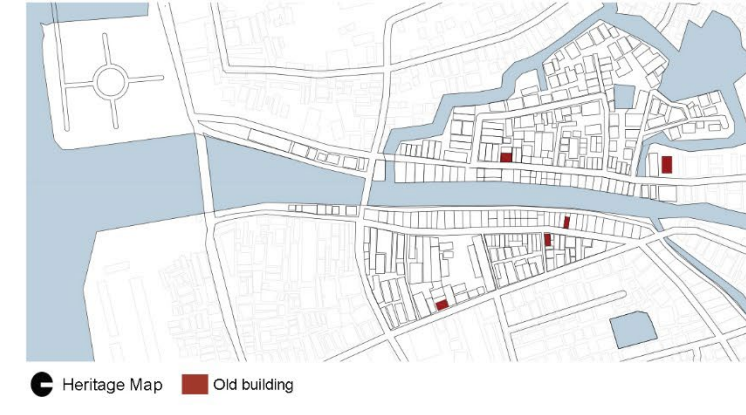
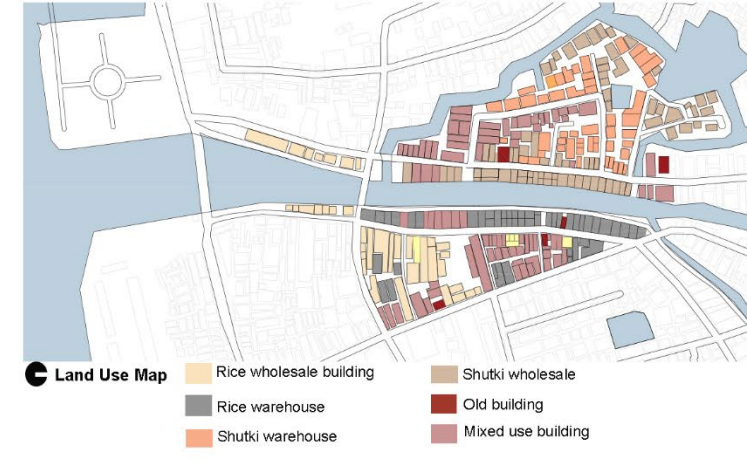
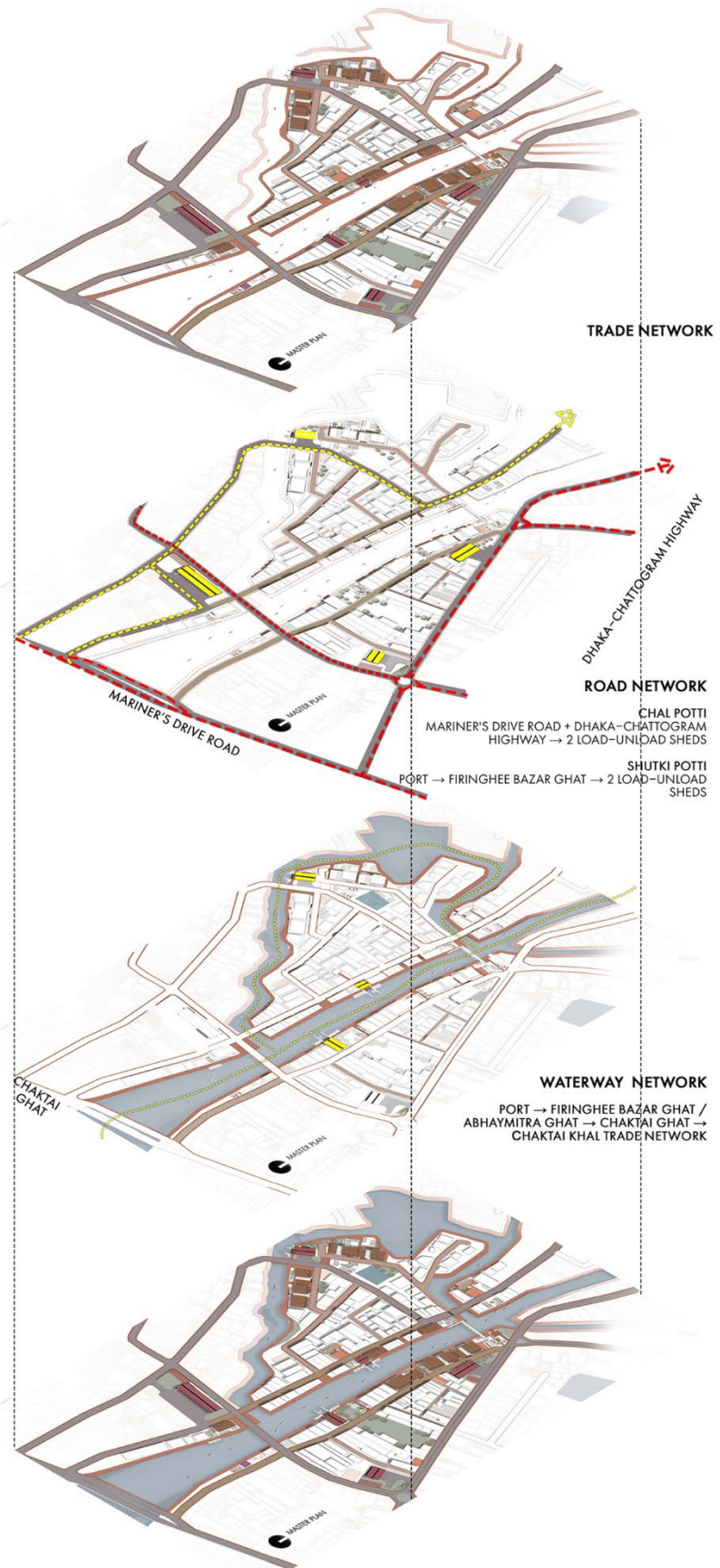
“

The Chaktai Khal - once a lifeline, has been reduced to a backyard drain, blocked by encroachments and informal sheds.

This project reimagines it as a living infrastructure that restores flow, dignity, and opportunity.



EXISTING SCENARIO ALONG THE CHAKTAI KHAL



1. NEWLY DESIGNED MODULES, TYPE 1
2. NEWLY DESIGNED MODULES, TYPE 2
3. TRUCK LOAD/UNLOAD SHED
4. BOAT LOAD/UNLOAD SHED
5. MULTI-PURPOSE KIOSK
6. PUBLIC TOILET
7. PROPOSED PEDESTRIAN BRIDGE
8. OLD BUILDING 1, ADAPTIVE REUSE AS TENDER HALL WITH COLD STORAGE EXTENSION
9. OLD BUILDING 2, ADAPTIVE REUSE AS CAFE WITH LODGE EXTENSION
10. OLD BUILDING 3, ADAPTIVE REUSE AS WHOLESALE SHOP
11. OLD BUILDING 4, ADAPTIVE REUSE AS WHOLESALE SHOP
12. OLD BUILDING 5, ADAPTIVE REUSE AS WHOLESALE SHOP

INTEGRATED TRADE AND WATERFRONT NETWORK

Adaptable Vendor Units (For vendors, mela/fair and seasonal needs.)



Old Building 2
Lodge & Cafe
for traders



Proposed Footover Bridge



Old Building 3
Wholesale shop



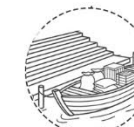
Newly Designed Modules - For Flexible Commerce & Storage Purpose



Old Building 4
Local Cafe



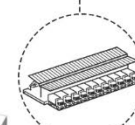
Ghat & Boat Load/Unload Shed, Proposed spine to revive waterborne trade circulation.



Old Building 5
Wholesale shop



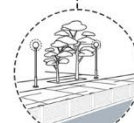
Truck Load/Unload Shed - Designated bay to reduce street congestion .



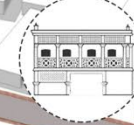
Adaptable Vendor Units (For vendors, mela/fair and seasonal needs.)



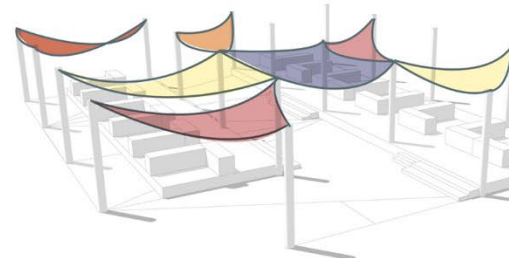
Continuous Promenade Along The Khal



Old Building 1
Tender Hall & Cold Storage for Shutki



Every Sunday, Asadganj once hosted **Boro Bazar**, a lively street market that faded due to space scarcity. **Adaptable vendor modules** revive it, expanding on Sundays to bring back its rhythm of trade, community, and memory along the khal.

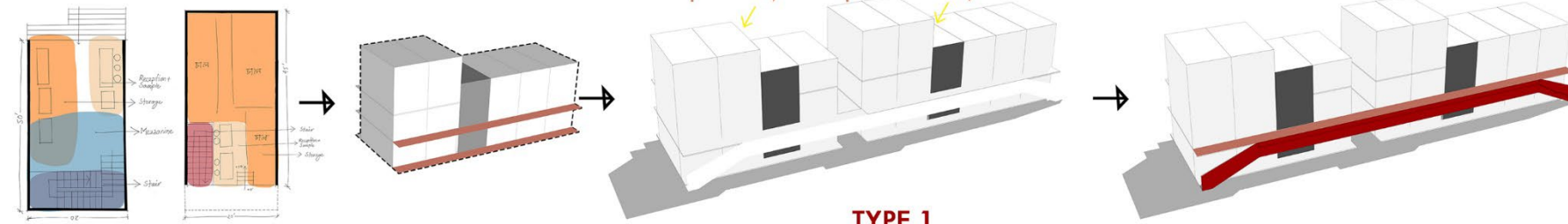


Adaptable vendor modules for **BORO BAZAR**

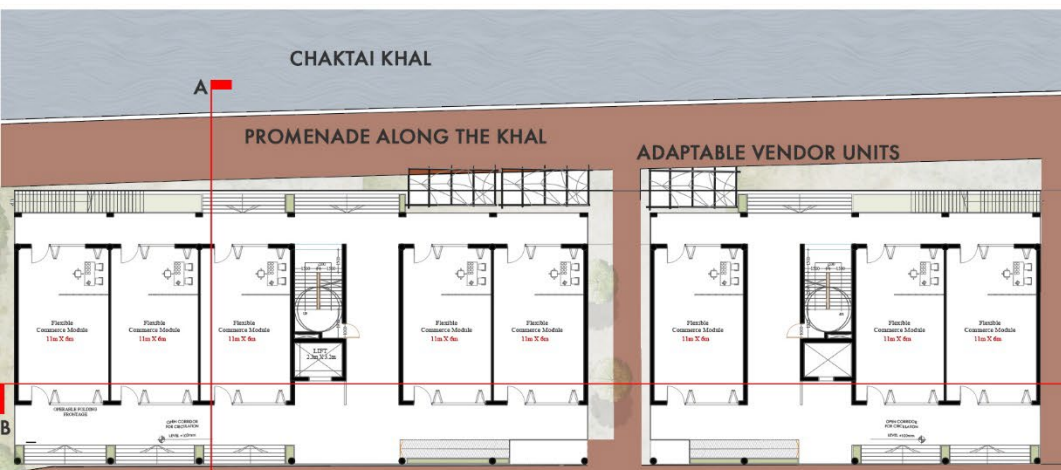


The **LOAD/UNLOAD SHED** acts as a transitional edge between water and land, organizing the movement of goods between boat, truck, and market.

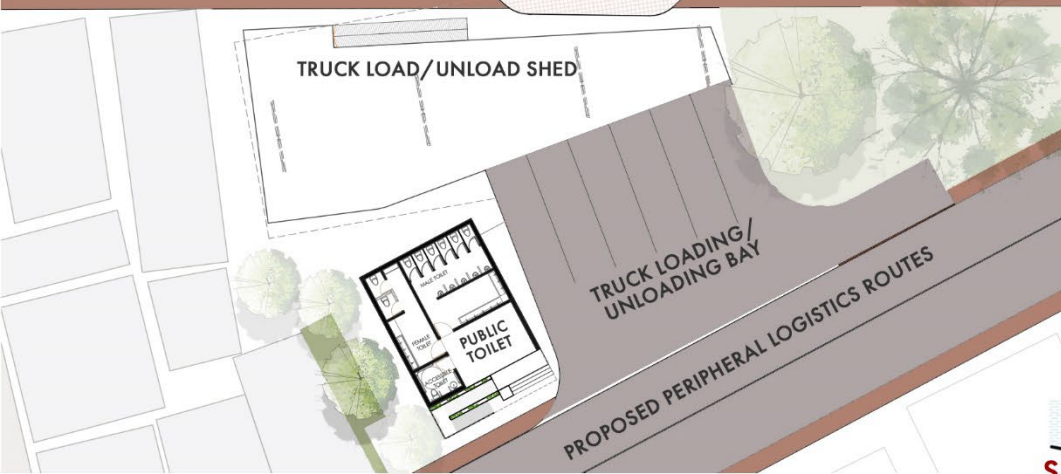
MODULE GENERATION



TYPE 1



CHAKTAI ROAD (TRUCK ACCESS RESTRICTED, PEDESTRIAN AND SLOW MOVING VEHICLE FRIENDLY)



GROUND FLOOR PLAN OF NEWLY DESIGNED MODULE, TYPE 1

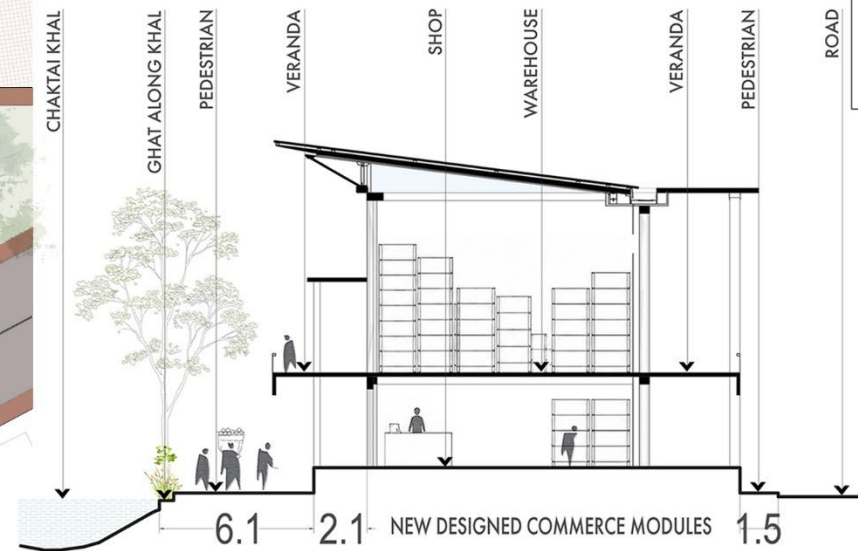
0 1 2 3 4 5 10m

TYPE 2



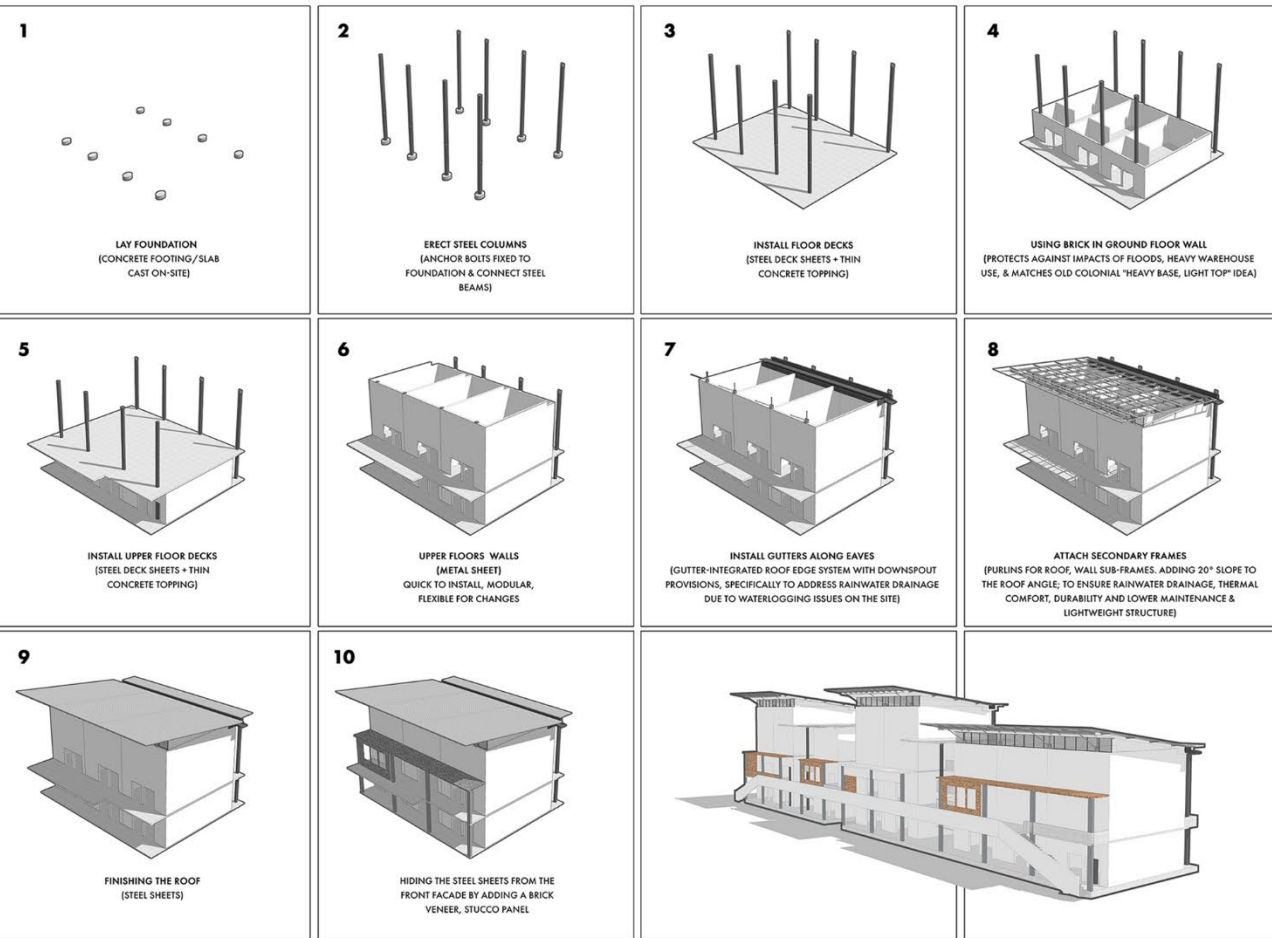
GROUND FLOOR PLAN OF NEWLY DESIGNED MODULE, TYPE 2

0 1 2 3 4 5 10m



SECTION AA'

0 1 2 3 4 5 10m



DESIGN MANUAL FOR MODULES

The modules utilize a hybrid steel-and-brick construction system. Lightweight steel framing for rapid construction, future expansion, and flexible internal layouts, with brick-clad ground floors provide durability against flooding and intensive commercial use. Shaded frontages, sloped roofs, and integrated drainage systems reinterpret the architectural character of Asadganj's historic shophouses.



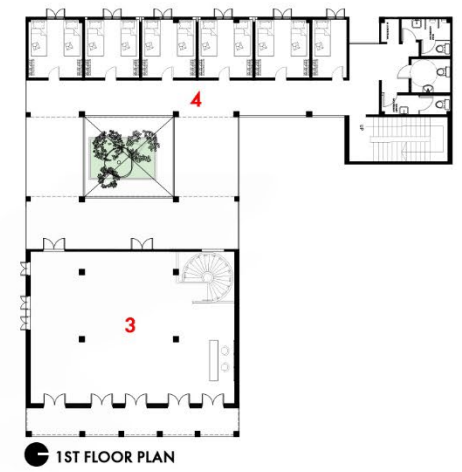
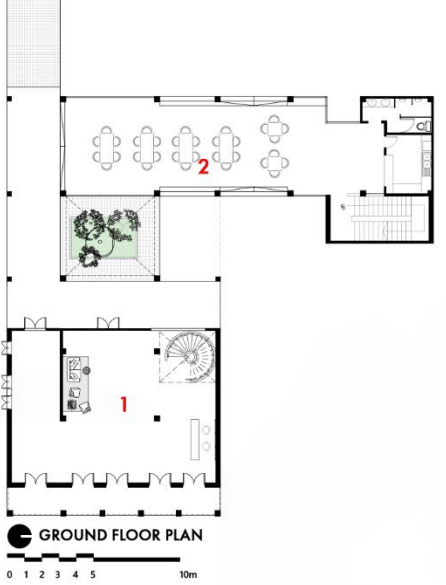
SECTION BB'

ADAPTIVE REUSE OF OLD BUILDING WITH RESTORATIVE APPROACH

BUILDING 2- LODGE BUILDING TIMELINE:1940

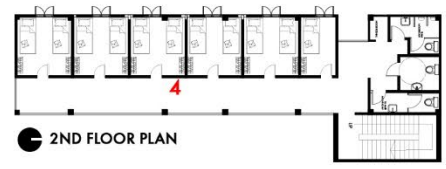
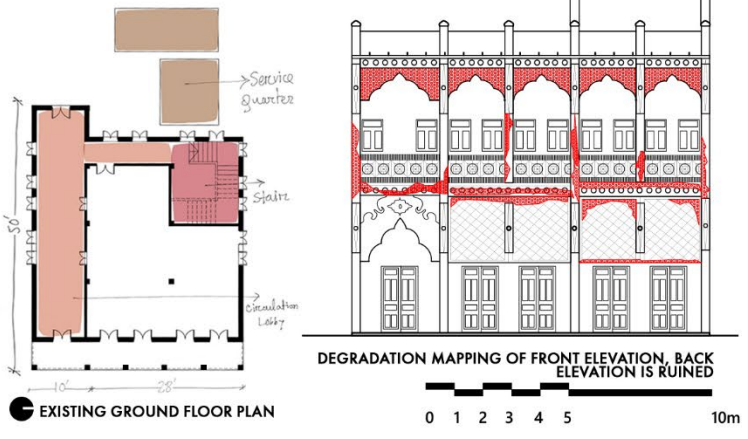
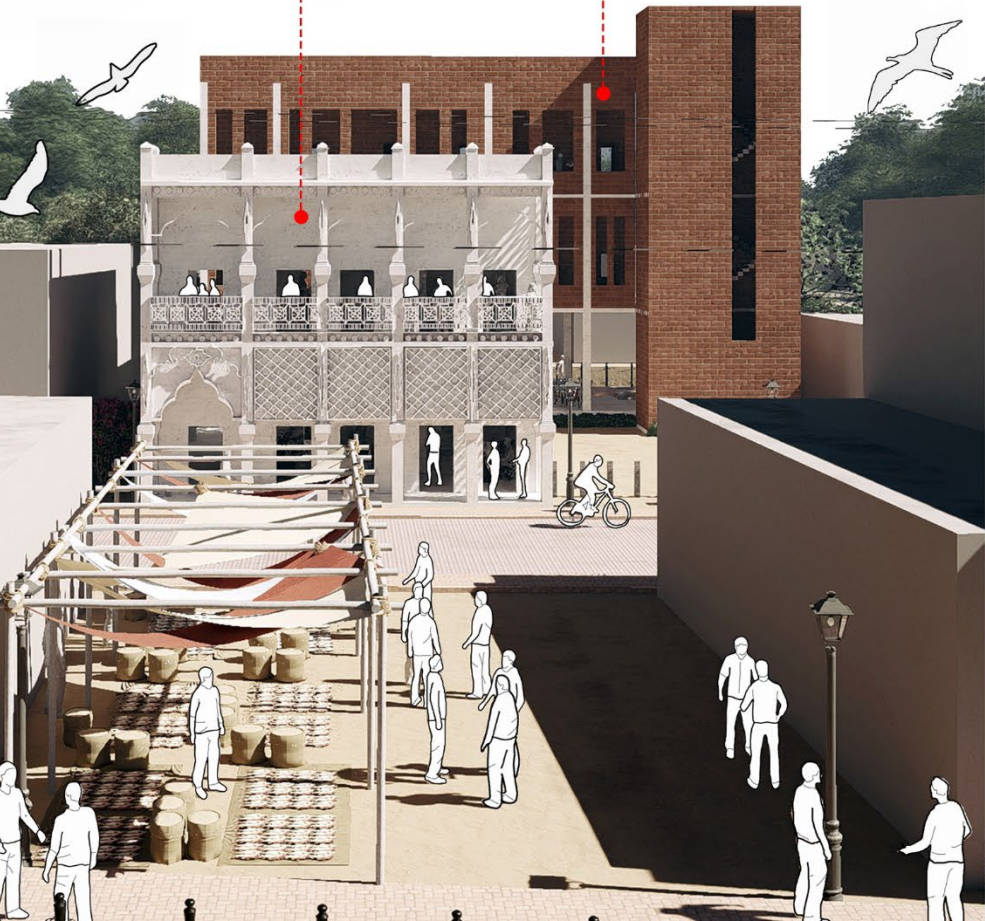
Previous Use: Traditional shophouse, the ground floor served commercial purposes, while the upper floor functioned as the residence of the Swadagar (merchant).
Current Use: Abandoned.

REVIVED THE ABANDONED BRUNCH OF CHAKTAI KHAL



Extension with Old Building 2
Lodge for Traders

Old Building 2
Ground floor : Trade Office
First Floor : Local Cafe



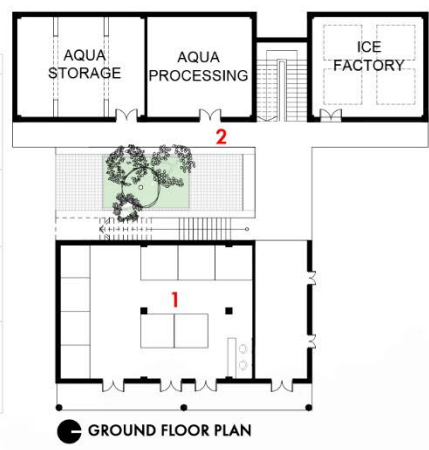
- 1. ADMIN
- 2. LOCAL CAFE
- 3. LODGE OFFICE
- 4. LODGE

BUILDING 1- TENDER HALL & TRADE OFFICE BUILDING TIMELINE:1943

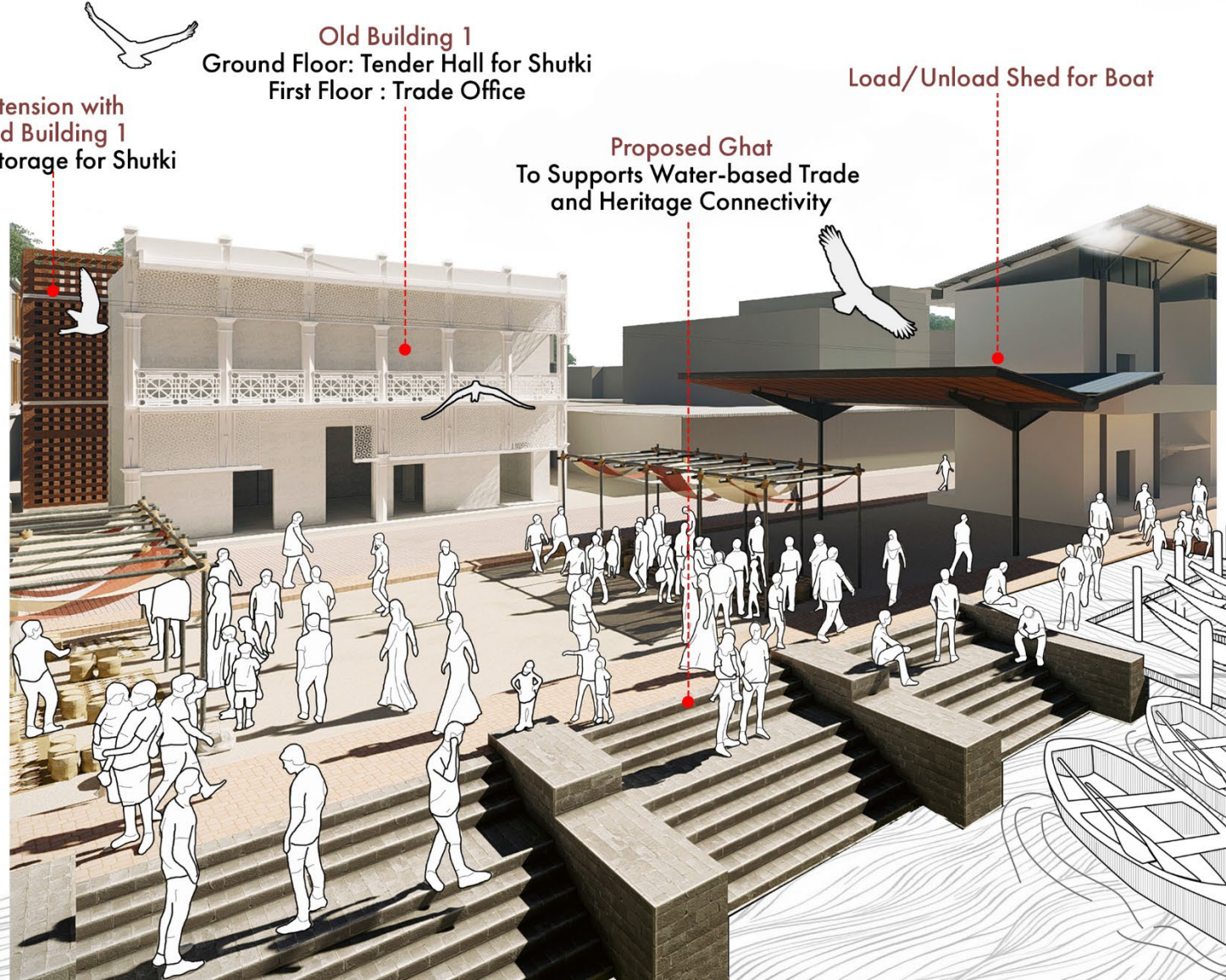
Previous Use: Traditional shophouse — the ground floor served commercial purposes, while the upper floor functioned as the residence of the Swadagar (merchant).

Current Use: The ground floor continues to operate as a shop, whereas the upper floor remains abandoned.

Material	Degradation	Cause	Remedy
Plaster	Absence	-Anthropic Conditions -Lack of maintenance -Additional vibration of external forces -Unequal expansion in the material due to temperature variation	- New plaster following the original technique - Reconstruction
Plaster	Presence of Vegetation	-Lack of maintenance -Biological degradation Bio colonization due to favorable temperature, rainfall, humidity, salinity etc	-Active cleaning may be done with hot water, water vapor, blusting with adhesive mixture. -Some cases biological cleaning may required
Plaster	Patina Biology	-Lack of maintenance -Biological degradation Bio colonization due to favorable temperature, rainfall, humidity, salinity etc	-Active cleaning may be done with hot water, water vapor, blusting with adhesive mixture. -Some cases biological cleaning may required
Plaster	Fracture or Slot	-Anthropic Conditions -Lack of maintenance -Additional vibration of external forces -Fracture causes due to Unequal expansion in the material	-In case the crack that doesn't reach at the core of the elements lime treatment may be useful for consolidation and protection. -Sometimes it may useful to remove the damage part and identical replacement of new material.



- 1. TENDER HALL FOR SHUTKI
- 2. COLD STORAGE
- 3. TRADE OFFICE



TRUCK
LOAD/UNLOAD SHED
FOR CHAL POTTI

PEDESTRIAN & SLOW MOVING
VEHICLE FRIENDLY CHAKTAI ROAD

NEWLY DESIGNED
MODULE
(CHAL POTTI)

ADAPTABLE
VENDOR UNITS

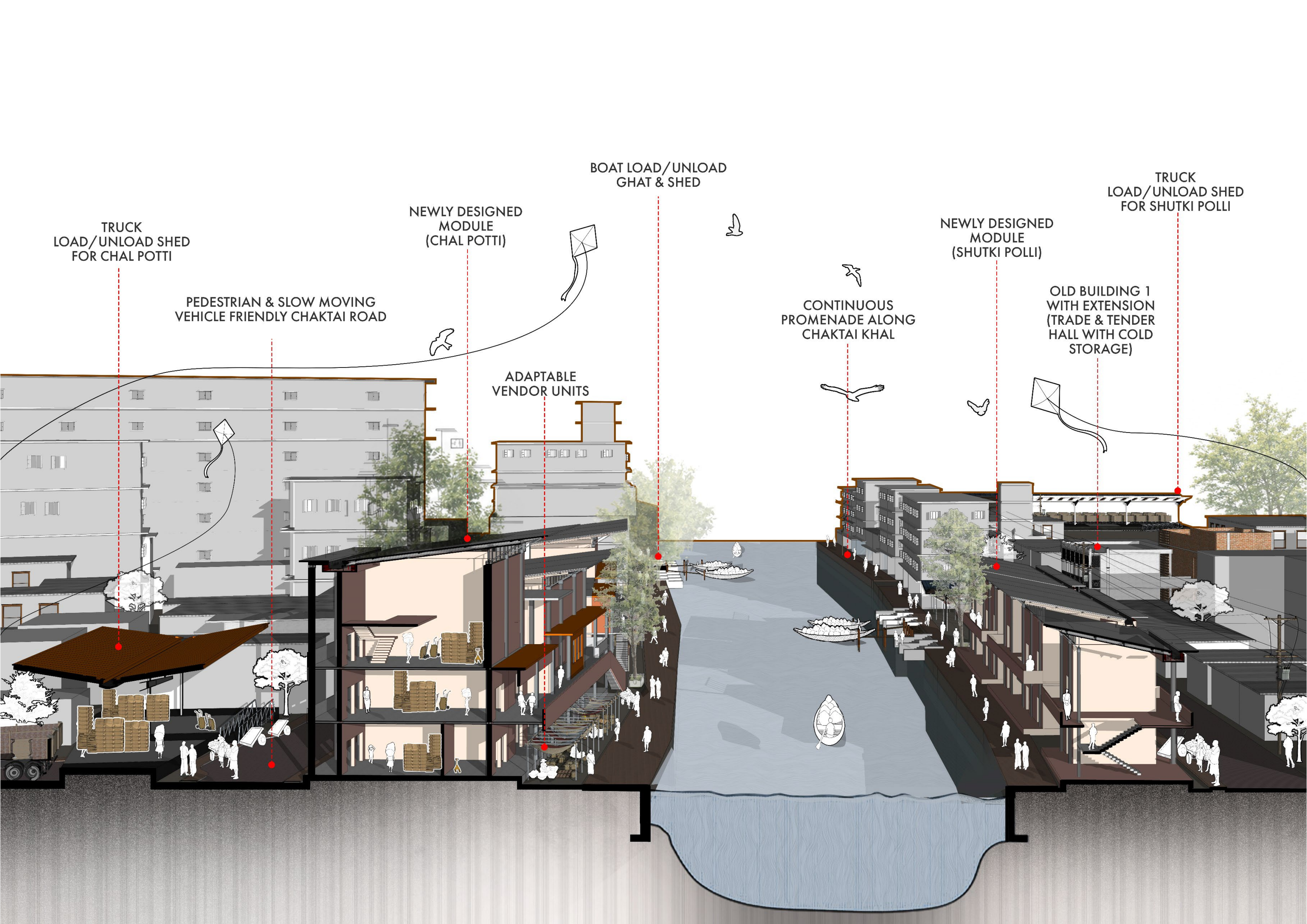
BOAT LOAD/UNLOAD
GHAT & SHED

CONTINUOUS
PROMENADE ALONG
CHAKTAI KHAL

NEWLY DESIGNED
MODULE
(SHUTKI POLLI)

OLD BUILDING 1
WITH EXTENSION
(TRADE & TENDER
HALL WITH COLD
STORAGE)

TRUCK
LOAD/UNLOAD SHED
FOR SHUTKI POLLI



EVENING - COMMUNITY & PUBLIC REALM

By dusk, retail slows and shutters open. The busy ground floor shifts into a relaxed public space. Tea stalls, benches, and small gatherings appear, and heritage facades become a calm backdrop.

AFTERNOON-MARKET & COMMERCE

In the afternoon, storage shifts upstairs and the ground floor becomes active. Kiosks and counters open along the spine, verandas serve for packing, and the canalside edges turn into lively street trade.

MORNING - TRADE & LOGISTICS

At dawn, carts and boats converge at the canal edge as load bearers load & unload and sort goods on the ground floor before transporting them to upper-level storage.

HERITAGE BACKBONE

The old facades watch silently - trade, time, and everyday life

Now it's tea stalls and slow conversations

Look, the downstairs shutters are folding open again!

Bargaining, chatter, movement everywhere

Carts on one side, boats on the other.

The air is heavy with shutki

