



*"The old teach patience; the young teach possibilities. In shared spaces, both learn life."*

## 1. Introduction

With the increasing number of dual-income families, the demand for safe and reliable day care centres has grown significantly. At the same time, many senior citizens face social isolation due to changing family structures and reduced daily interaction. Although both groups require care, emotional support, and engagement, they are often addressed separately.

This project proposes an intergenerational day care centre combined with a senior citizens' hangout space, where children and elderly individuals share a thoughtfully designed environment. The design explores how spatial planning, safety, and sensory design can encourage meaningful interactions while respecting the physical, emotional, and psychological needs of both age groups.

## 2. Aim

To design a safe, inclusive, and emotionally enriching intergenerational space that supports early childhood development while simultaneously addressing loneliness and social disengagement among senior citizens through shared activities and environments.

## 3. Objectives

- To study the spatial, psychological, and safety requirements of children (ages 2–6) and senior citizens (60+).
- To design spaces that encourage controlled interaction between children and seniors without compromising comfort or safety.
- To create a secure day care environment for working parents that promotes holistic child development.
- To enhance the quality of life for senior citizens by providing social engagement, purpose, and companionship.
- To explore interior design strategies such as zoning, materiality, lighting, and furniture design suitable for intergenerational use.

## 4. Scope of the Project

- Design of an interior-based facility including:
  - o Day care classrooms
  - o Activity and play areas
  - o Senior citizens' lounge and hobby spaces
  - o Shared interaction zones (reading areas, gardens, activity rooms)
  - o Dining and rest spaces
  - o Support spaces such as washrooms, staff areas, and storage
- Focus on interior spatial planning, furniture, material selection, lighting, acoustics, and safety design.
- Integration of age-friendly and child-safe design principles within a single facility.

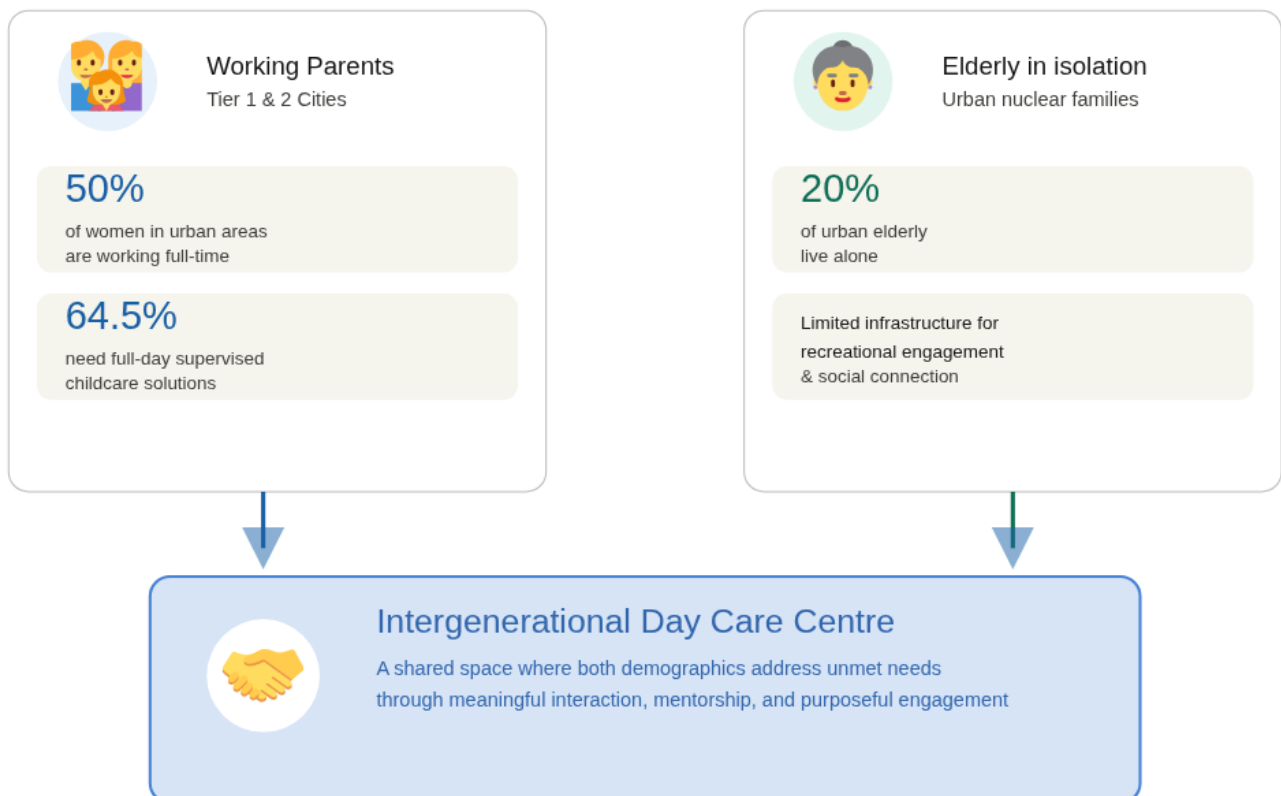
## 5. Limitations

- The project does not include medical or assisted-living care facilities.
- Structural and architectural changes are limited; emphasis is on interior intervention.
- The study focuses on day-time usage only, excluding residential or overnight facilities.
- Social and cultural behavior patterns may vary by region and may not be universally applicable.

## 6. Research Methodology

- Primary Research
  - o Observation of existing day care centres and senior citizen community spaces
  - o Informal interviews with working parents, caregivers, and senior citizens
  - o Behavioral study of children and elderly in shared or public environments
- Secondary Research
  - o Literature review on intergenerational spaces, child psychology, and geriatric design
  - o Study of national and international case studies of intergenerational facilities
  - o Review of safety standards, ergonomic guidelines, and accessibility norms
- Design Research
  - o Bubble diagrams and zoning studies
  - o User flow and interaction mapping
  - o Material, color, and sensory design exploration

### The urban gap: Two unmet needs, one solution



Sources: WHO Global Report on Ageism 2021 | UNFPA India Report 2026 | Urban Childcare Market Data 2025

# PLAYVILLE DAY CARE (Literature Study)

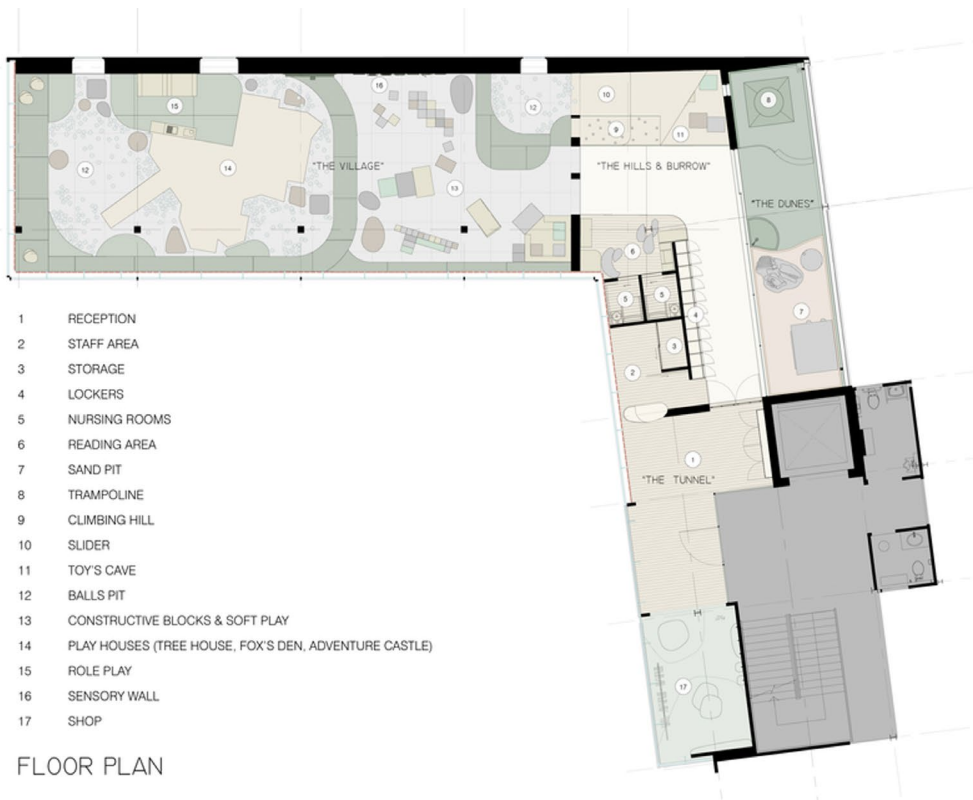


Location: Bangkok, Thailand

Area: 275 sq metres

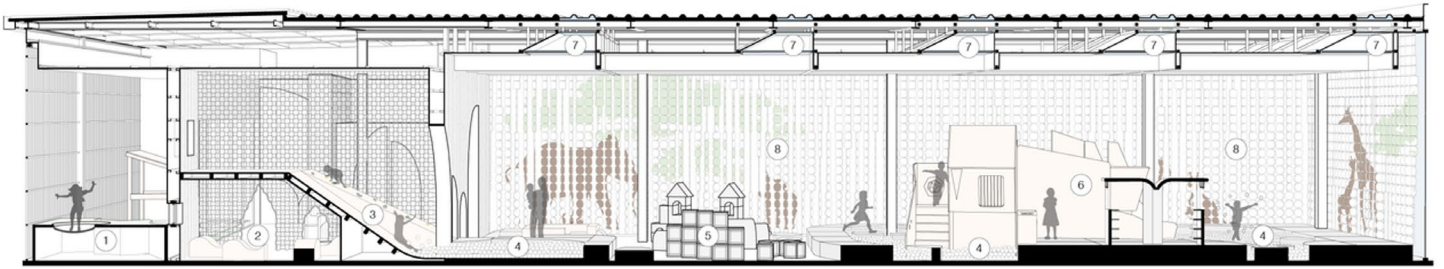
Year: 2018

Age group: 6 months to 6 years old



## Four programmatic zones





The Tunnel



Sensory wall

- 1 TRAMPOLINE
- 2 TOY'S CAVE
- 3 SLIDER & CLIMBING HILL
- 4 BALLS PIT
- 5 CONSTRUCTIVE BLOCKS & SOFT PLAY
- 6 PLAYHOUSES
- 7 SKYLIGHT
- 8 PIXELATED FELT SCREEN

SECTION

# Centro de atención diurno del adulto mayor (literature study)



Location: Macas, Ecuador

Area: 370 sq metres

Year: 2022

Architect: Side FX Arquitectura



# SHANTINIKETAN – Senior Living (Case study)



Location: Adalaj, Gandhinagar

Capacity: 100

Year: 1991

Architect: Mukul Seth



Outdoor Seating



Structure model

# Natkhat Nest Day Care Center (Case study)



Location: Vanita Vishram, Surat

Capacity: 130

Year: 2016

Age group: 9 months to 9 years



Main play Area



Toddler's area



Infant's area



Kitchen/dining



---

Location: Behind TM Patel School, Vesu, Surat

---

Area: 2500 sq metres built up, 800 sq m site area

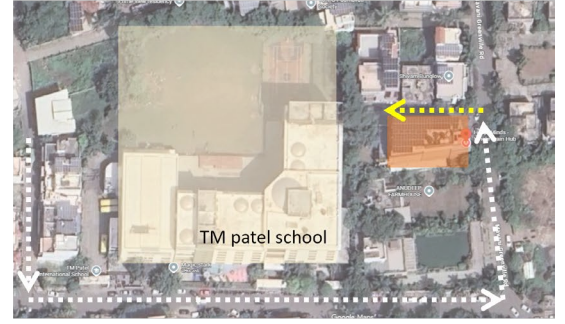
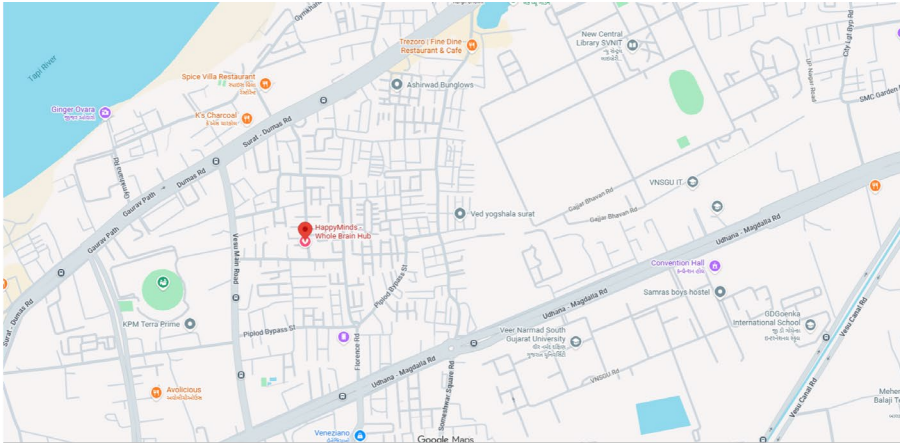
---

Year: 2022

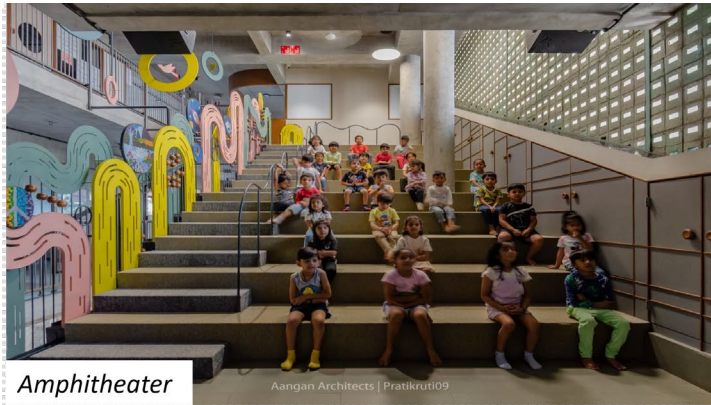
---

Architect: Aangan Architects

---



- Vertical stacking suits the project's need for: Zoning by age group, Visual connections via courtyards and cut-outs
- The area already supports day-time activities, making it suitable for a day care-based program rather than a residential one.
- High accessibility is crucial for both working parents and elderly users who may have mobility constraints.
- The site's proximity to an educational institution and residential neighbourhood makes it an ideal setting for a day-time intergenerational facility, where learning, care, and social interaction coexist within a familiar urban fabric.



**Amphitheater**

Aangan Architects | Pratikruti09



**Classrooms**

Aangan Architect | Pratikruti09



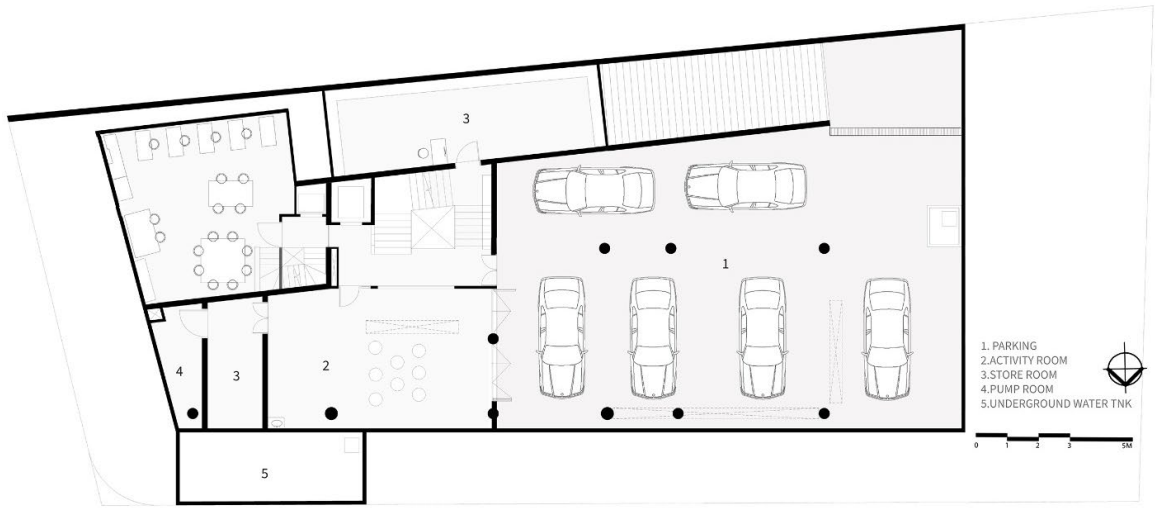
**Classrooms**

Aangan Architect | Pratikruti09



**Garden**

Aangan Architect | Pratikruti09



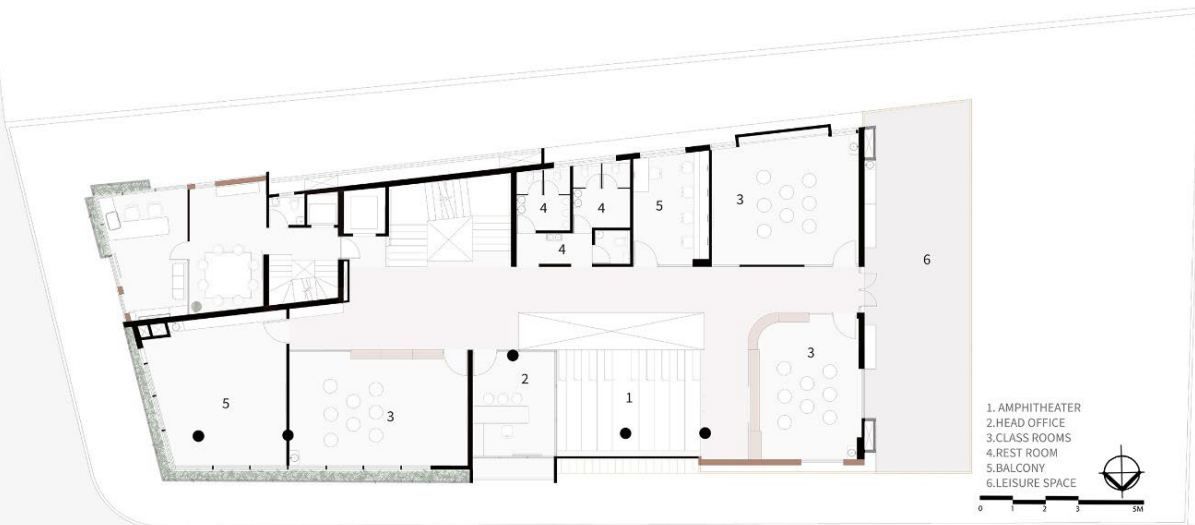
BASEMENT FLOOR PLAN



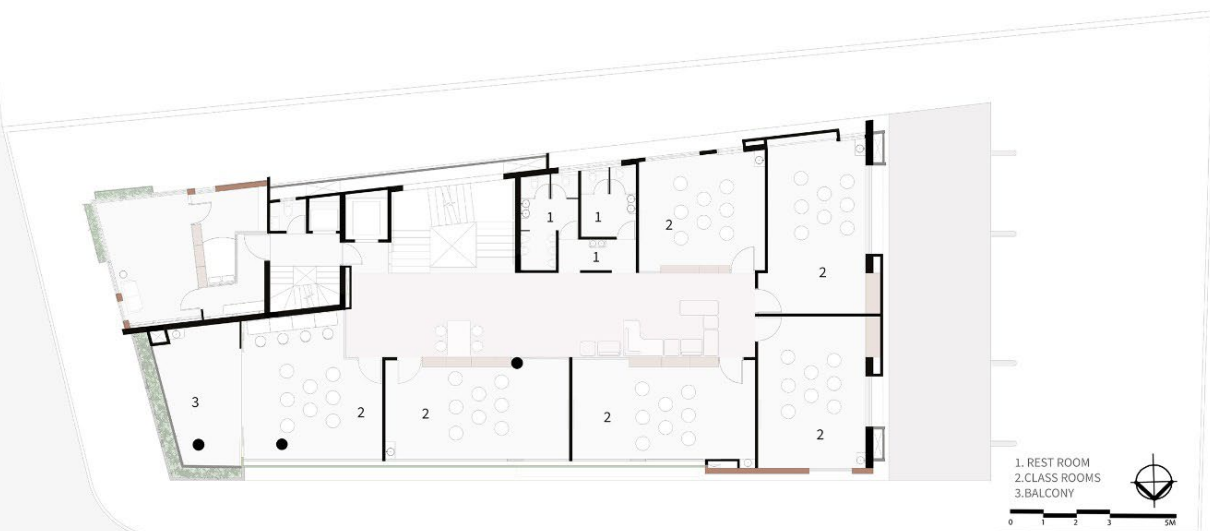
GROUND FLOOR PLAN



FIRST FLOOR PLAN

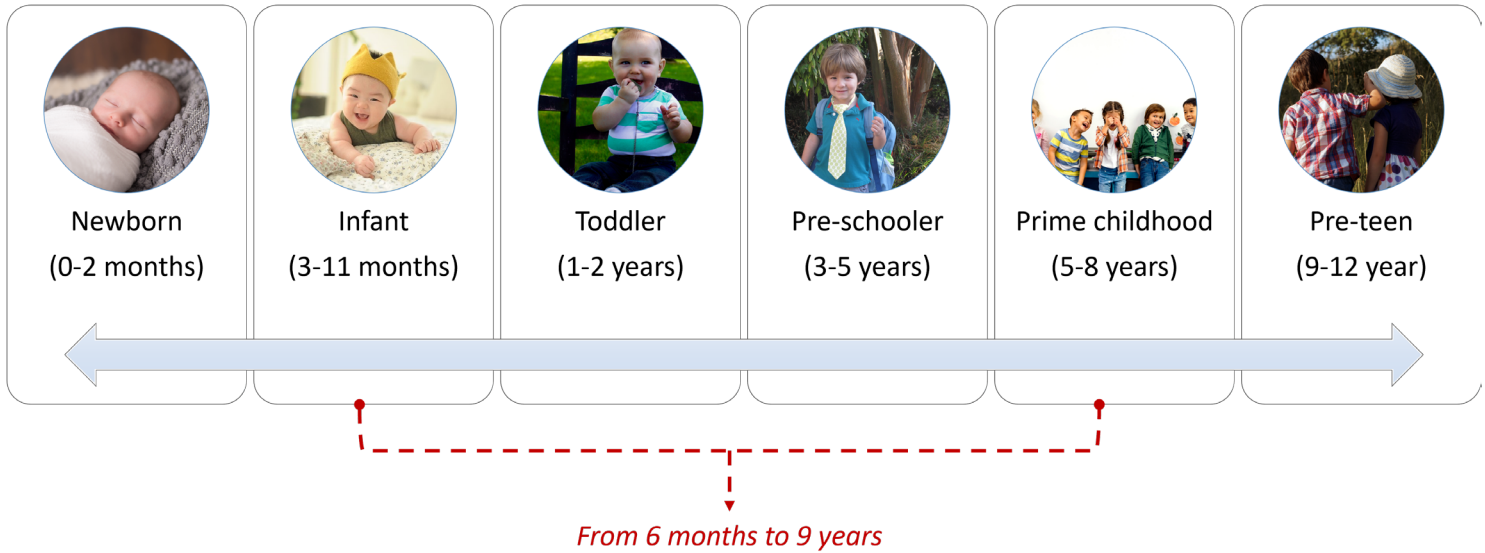


SECOND FLOOR PLAN

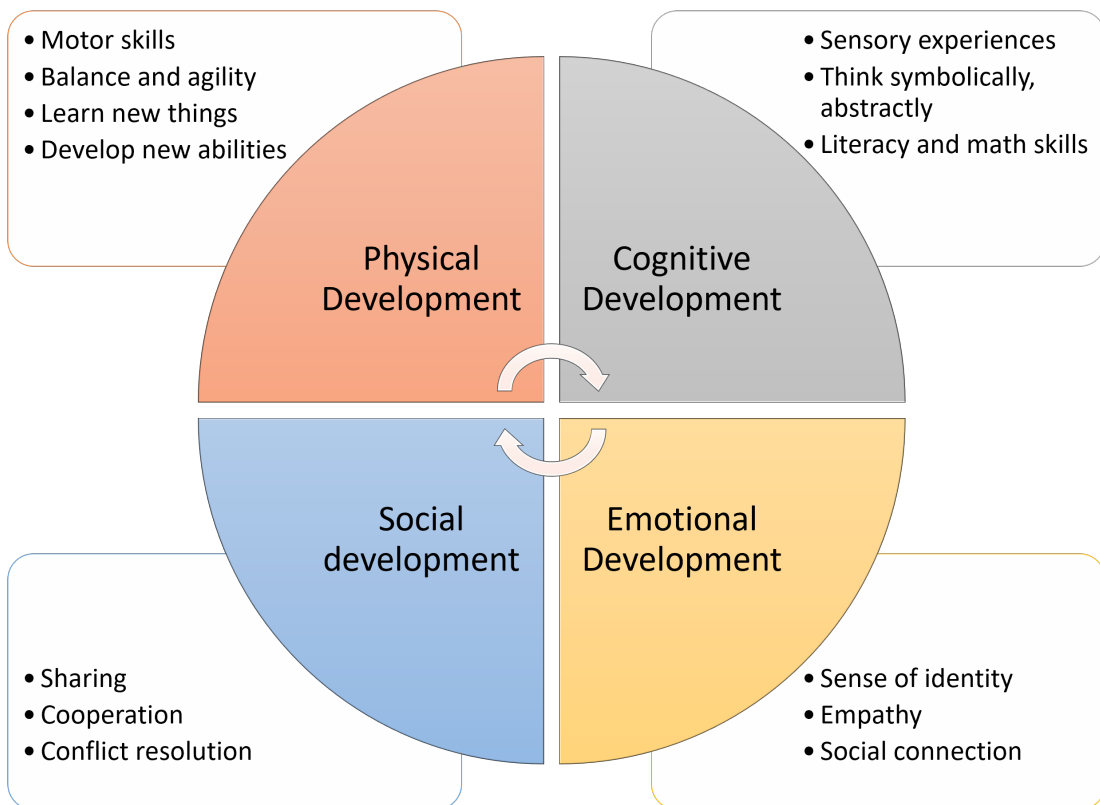


THIRD FLOOR PLAN

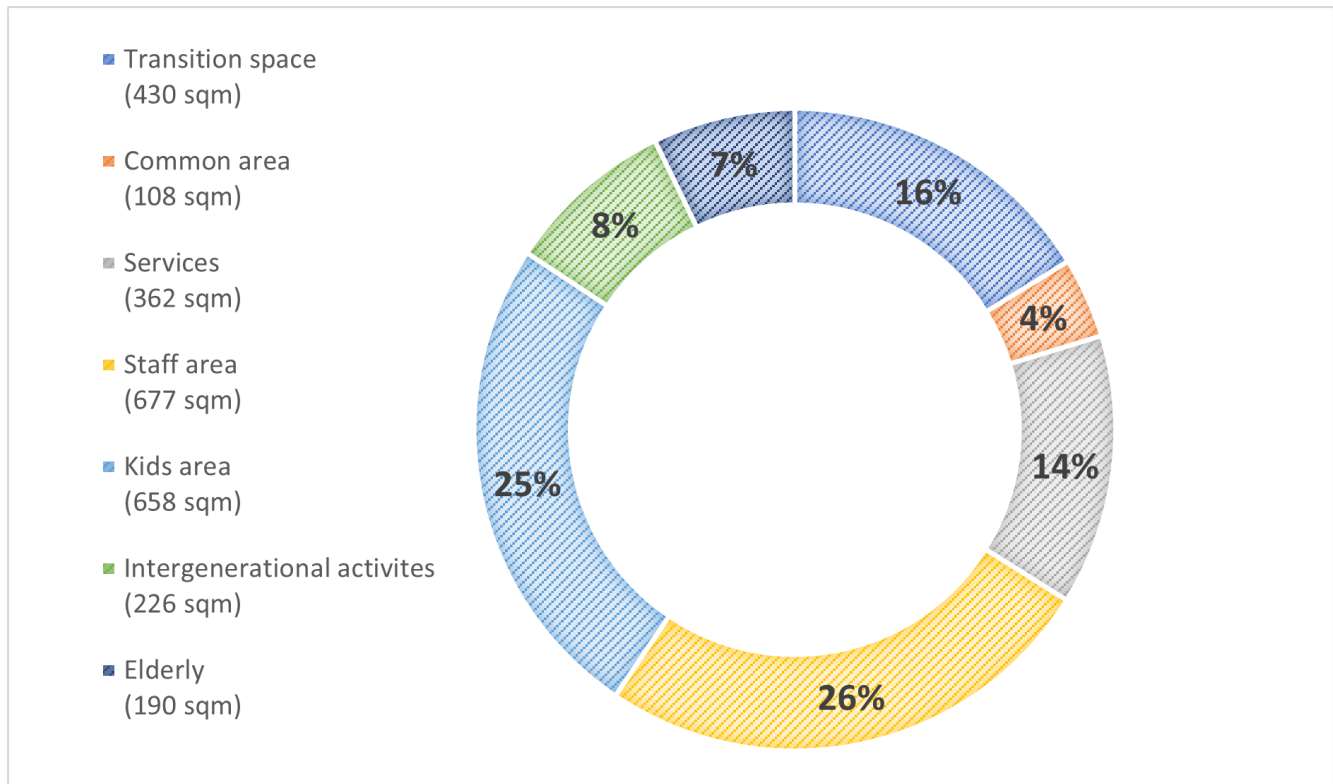
## TYPES OF CHILDREN



## TYPES OF CHILD DEVELOPMENT



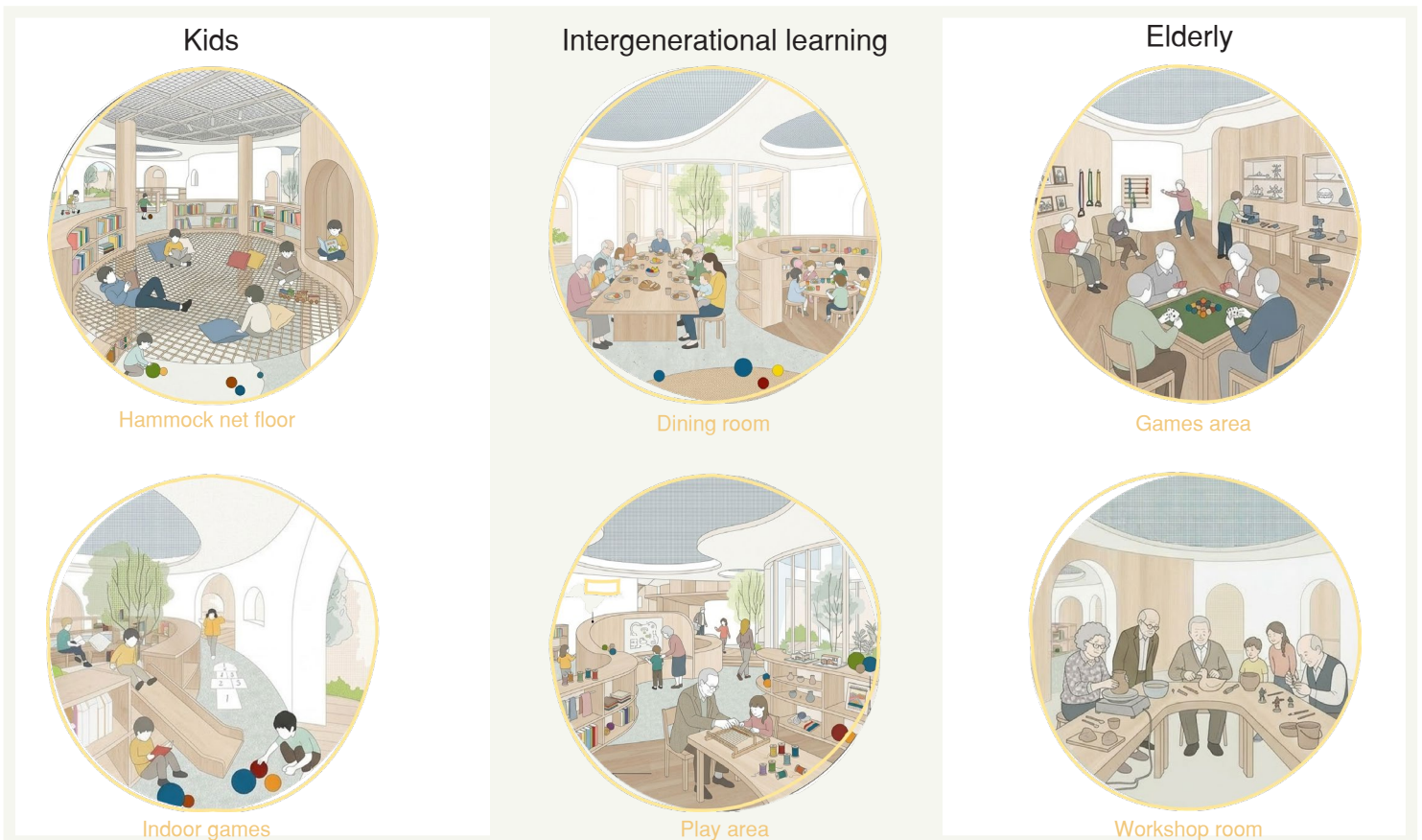
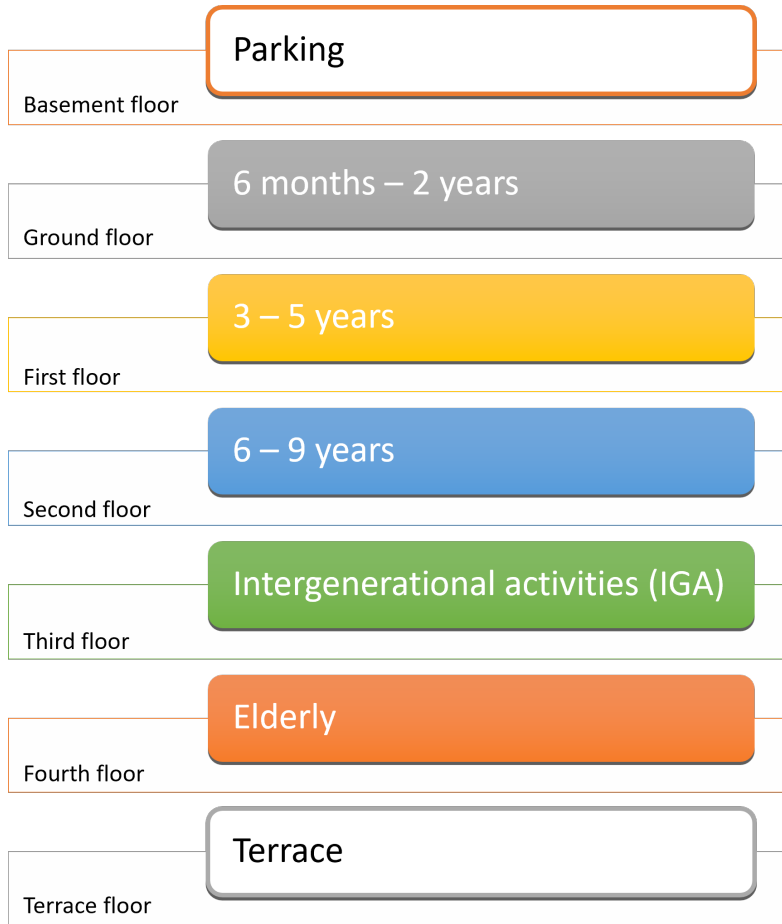
## AREA STATEMENT



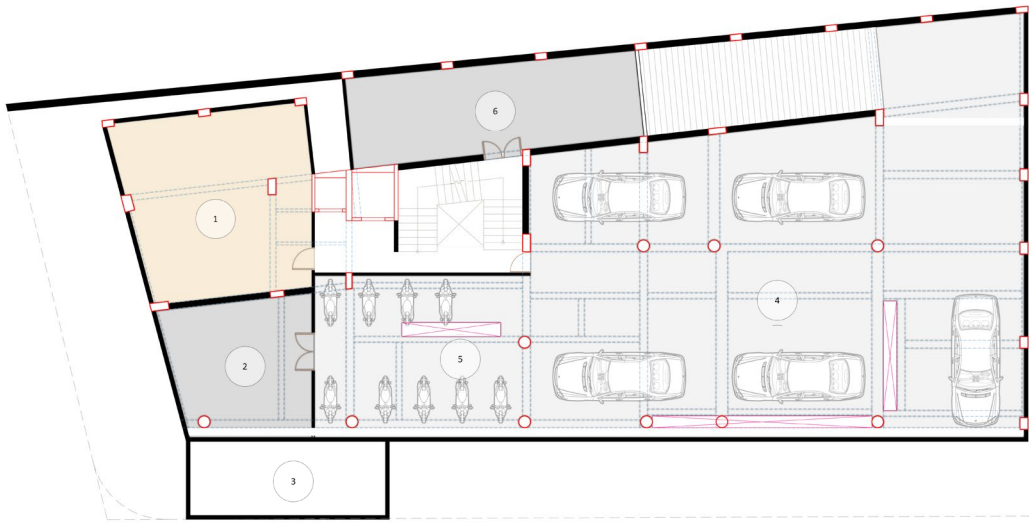
## CAPACITY

Category	Age groups	Batches	No. of people in each batch	Total no. of people	Care takers
KIDS	Infants/Toddler	3	5	15	3
	3-5 years	4	10	40	4
	6-9 years	3	15	45	3
ELDERS	Above 59 years	3	10	30	3
<b>TOTAL</b> (10:1 Avg ratio)				<b>130</b>	<b>13</b>

# ZONING



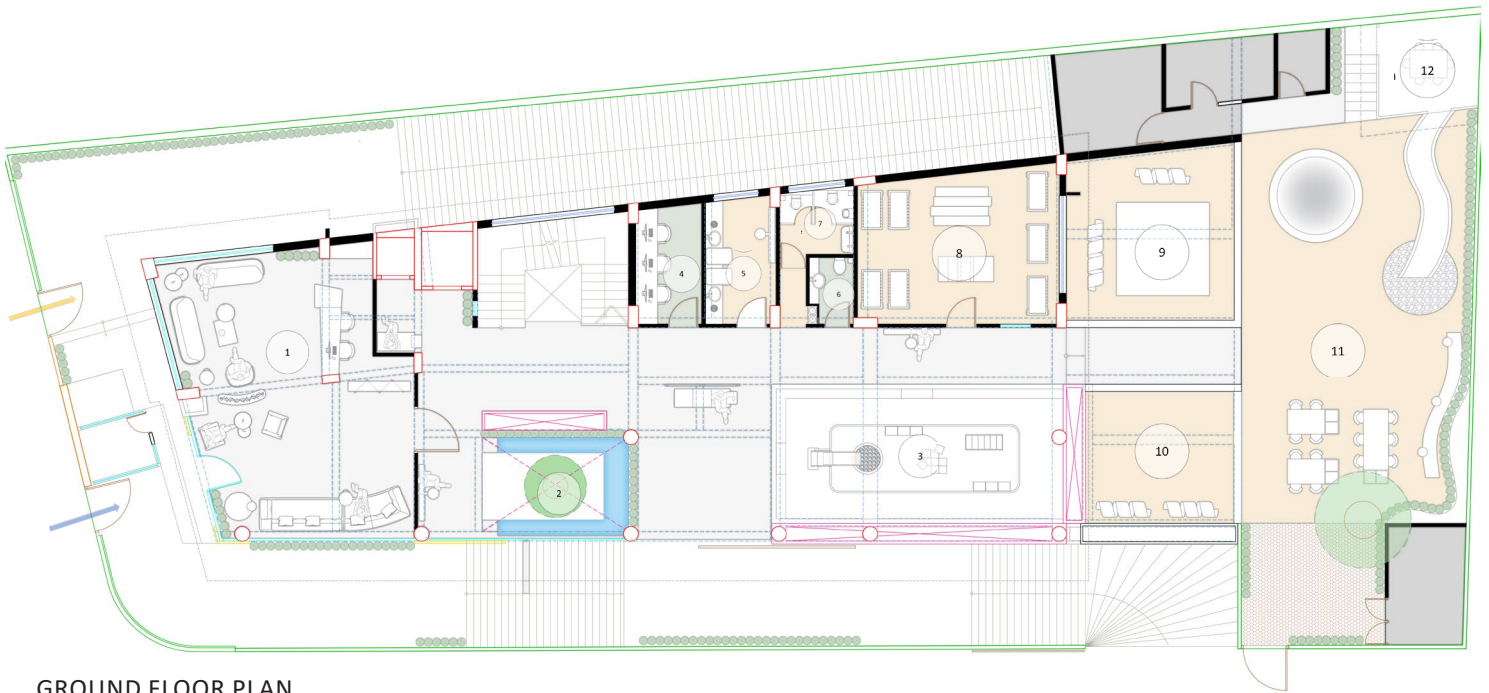
SOURCE: GEMINI AI



Basement floor	Parking
Ground floor	0 months - 2 years
First floor	3 - 5 years
Second floor	6 - 9 years
Third floor	Intergenerational activities (IGA)
Fourth floor	Elderly
Terrace floor	Terrace

- 1 Multiuse room
- 2 Pump room and store room
- 3 UGWT
- 4 Four wheeler
- 5 Two wheeler
- 6 Store room

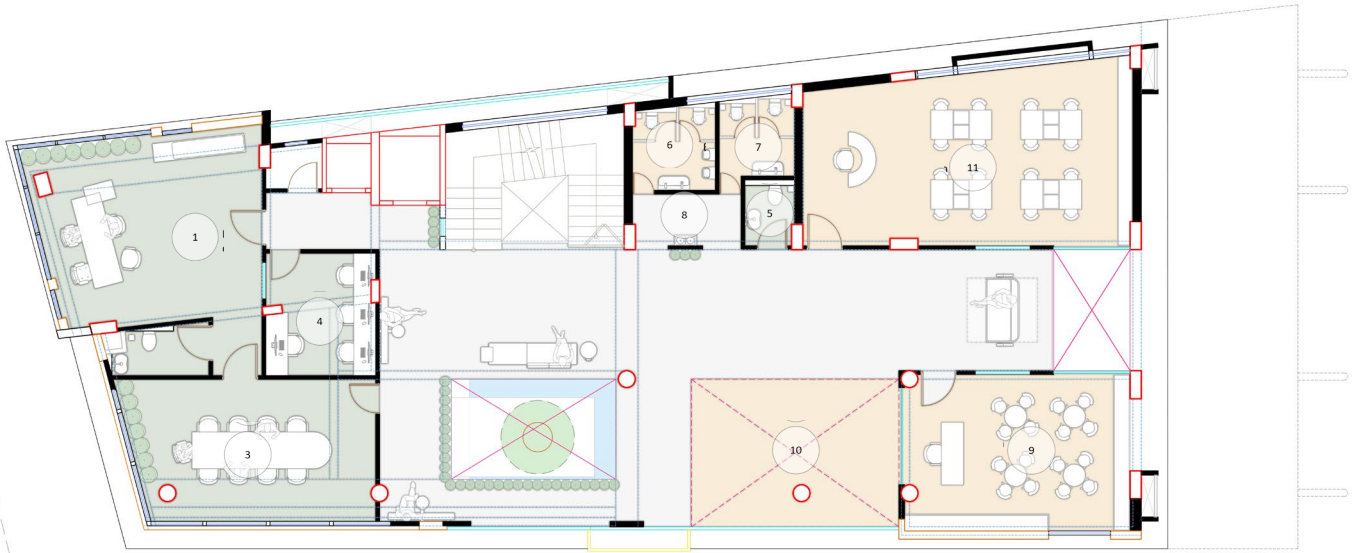
BASEMENT FLOOR PLAN



MAIN ENTRY  
PARKING ENTRY

- 1 Reception + Waiting lounge
- 2 Indoor courtyard
- 3 Indoor play area
- 4 Team area
- 5 Nursing room
- 6 Staff restroom
- 7 Kids restroom
- 8 Infants room
- 9 Semi outdoor
- 10 Sand pit
- 11 Outdoor play area
- 12 Tree house

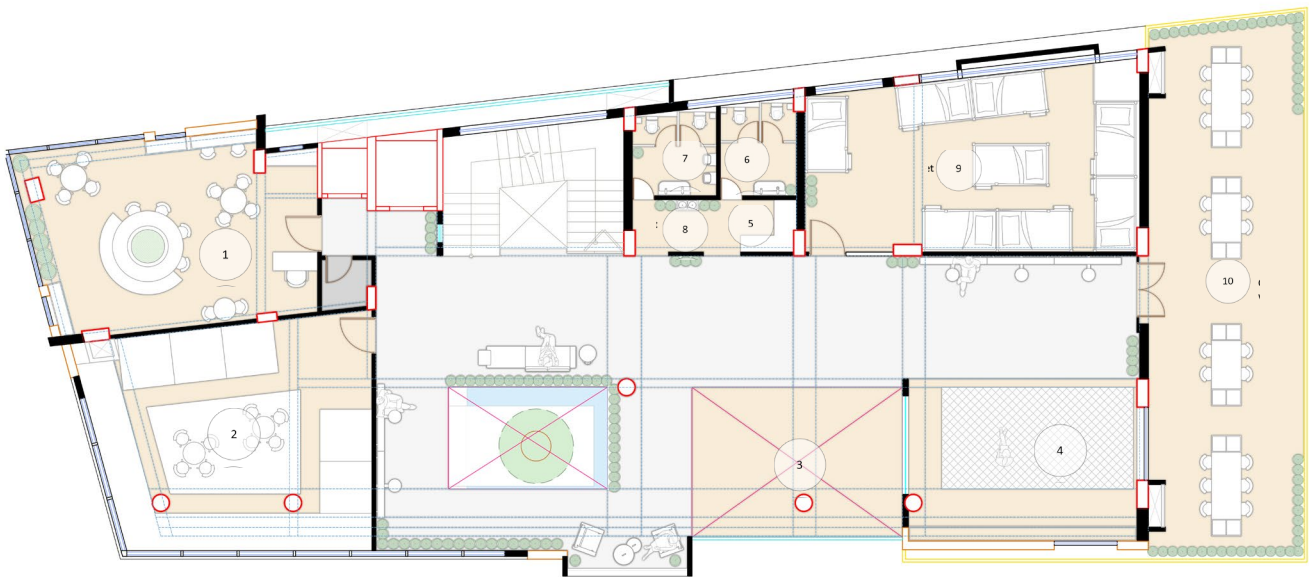
Basement floor	Parking
Ground floor	0 months - 2 years
First floor	3 - 5 years
Second floor	6 - 9 years
Third floor	Intergenerational activities (IGA)
Fourth floor	Elderly
Terrace floor	Terrace



FIRST FLOOR PLAN



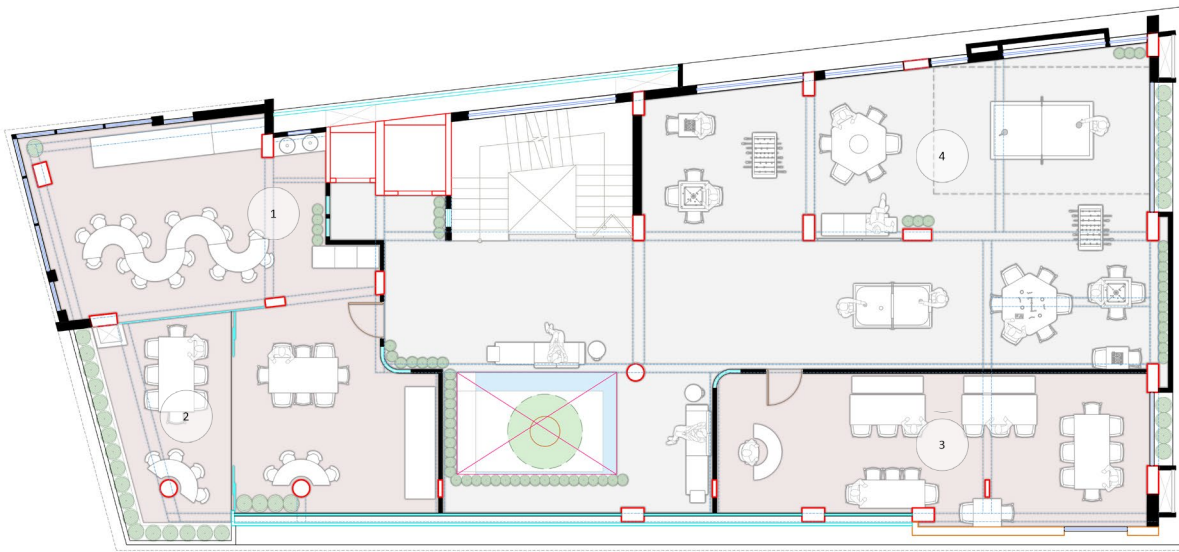
- 1 Director's cabin
- 2 Restroom
- 3 Meeting room
- 4 Team area
- 5 Staff restroom
- 6 Boys restroom
- 7 Girls restroom
- 8 Water fountain
- 9 Library
- 10 Double height play area
- 11 Art and craft room



SECOND FLOOR PLAN



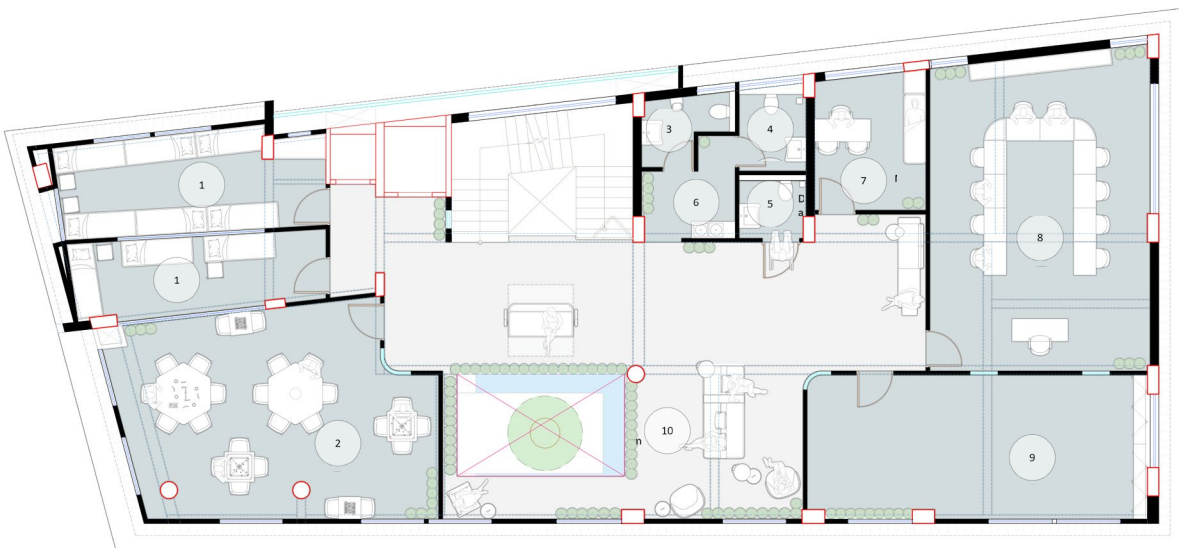
- 1 Study Room
- 2 Pretend play area
- 3 Double height play area
- 4 Hammock net
- 5 Pantry
- 6 Boys restroom
- 7 Girls restroom
- 8 Water fountain
- 9 Rest area
- 10 Outdoor workshop



- Basement floor: Parking
- Ground floor: 0 months - 2 years
- First floor: 3 - 5 years
- Second floor: 6 - 9 years
- Third floor: Intergenerational activities (IGA)
- Fourth floor: Elderly
- Terrace floor: Terrace

- 1 Dining room
- 2 Balcony
- 3 Workshop area
- 4 Open games area

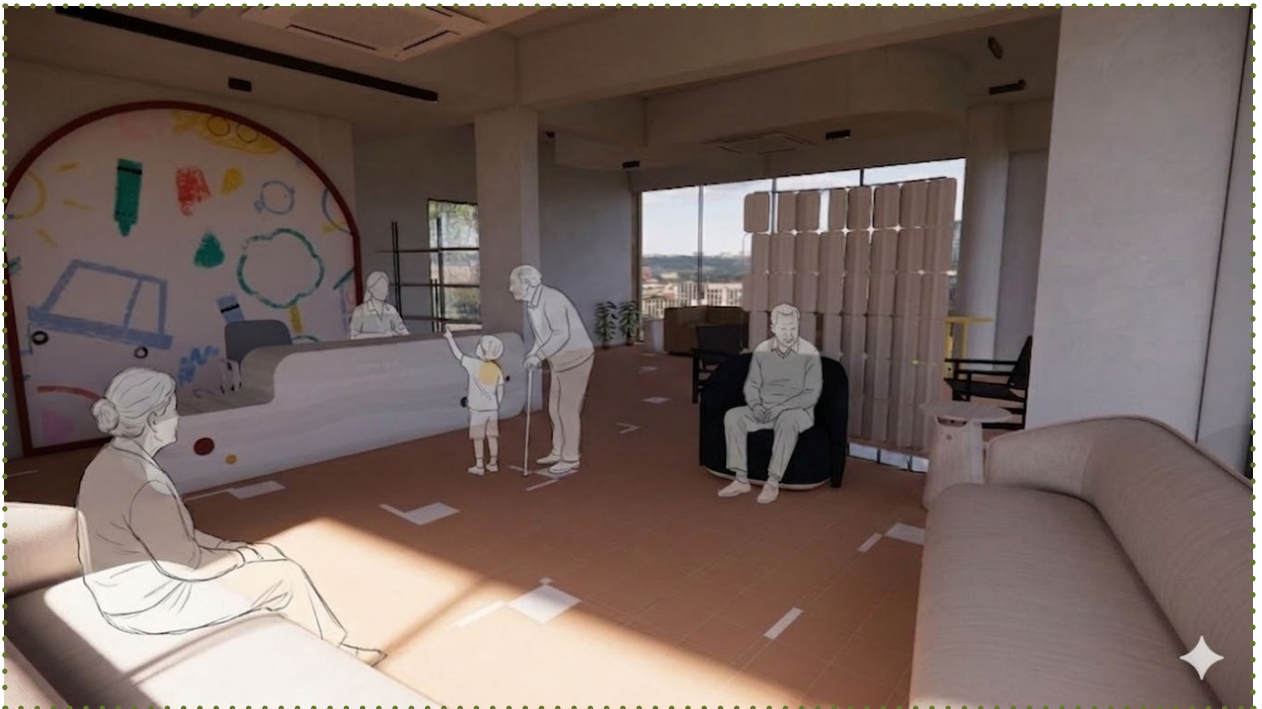
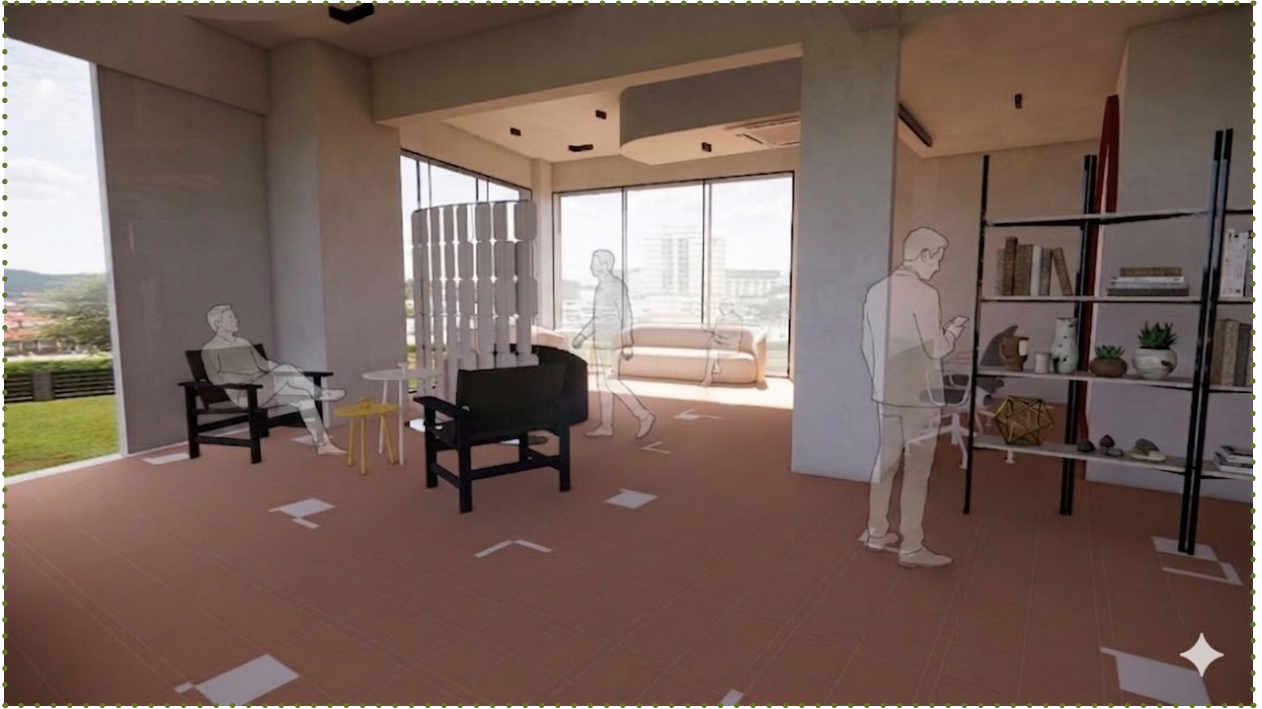
THIRD FLOOR PLAN



- Basement floor: Parking
- Ground floor: 0 months - 2 years
- First floor: 3 - 5 years
- Second floor: 6 - 9 years
- Third floor: Intergenerational activities (IGA)
- Fourth floor: Elderly
- Terrace floor: Terrace

- 1 Rest area
- 2 Games area
- 3 Male's restroom
- 4 Female's restroom
- 5 Differently abled restroom
- 6 Water fountain
- 7 Medical room
- 8 Workshop area
- 9 Activity room
- 10 Gathering space

FOURTH FLOOR PLAN



SOURCE: GEMINI AI

GROUND FLOOR  
*Reception*



SOURCE: GEMINI AI

GROUND FLOOR  
*Courtyard*



SOURCE: GEMINI AI

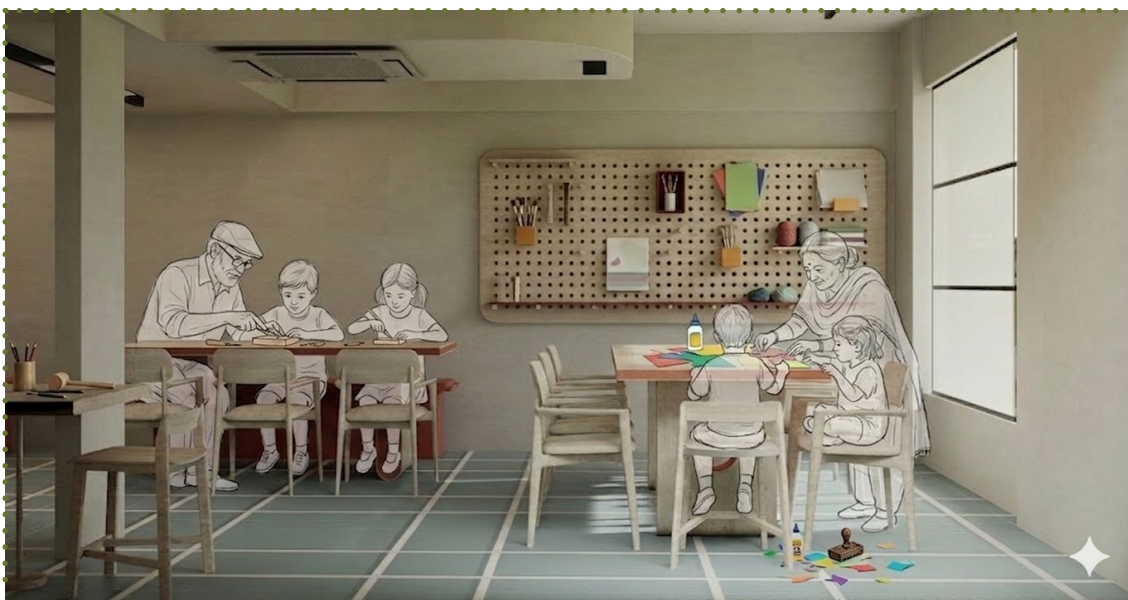
THIRD FLOOR  
Games area



THIRD FLOOR  
OPEN GAMES AREA



THIRD FLOOR  
PASSAGE

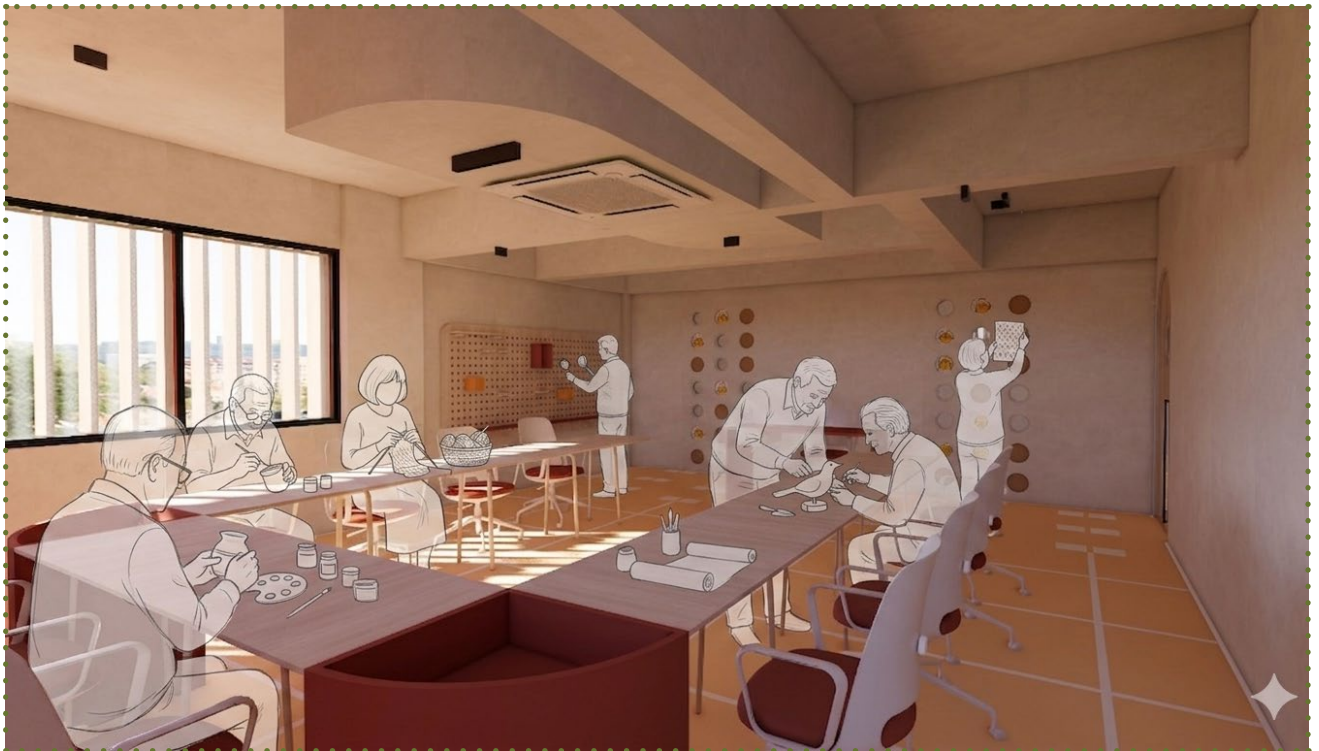


SOURCE: GEMINI AI  
THIRD FLOOR  
Workshop area



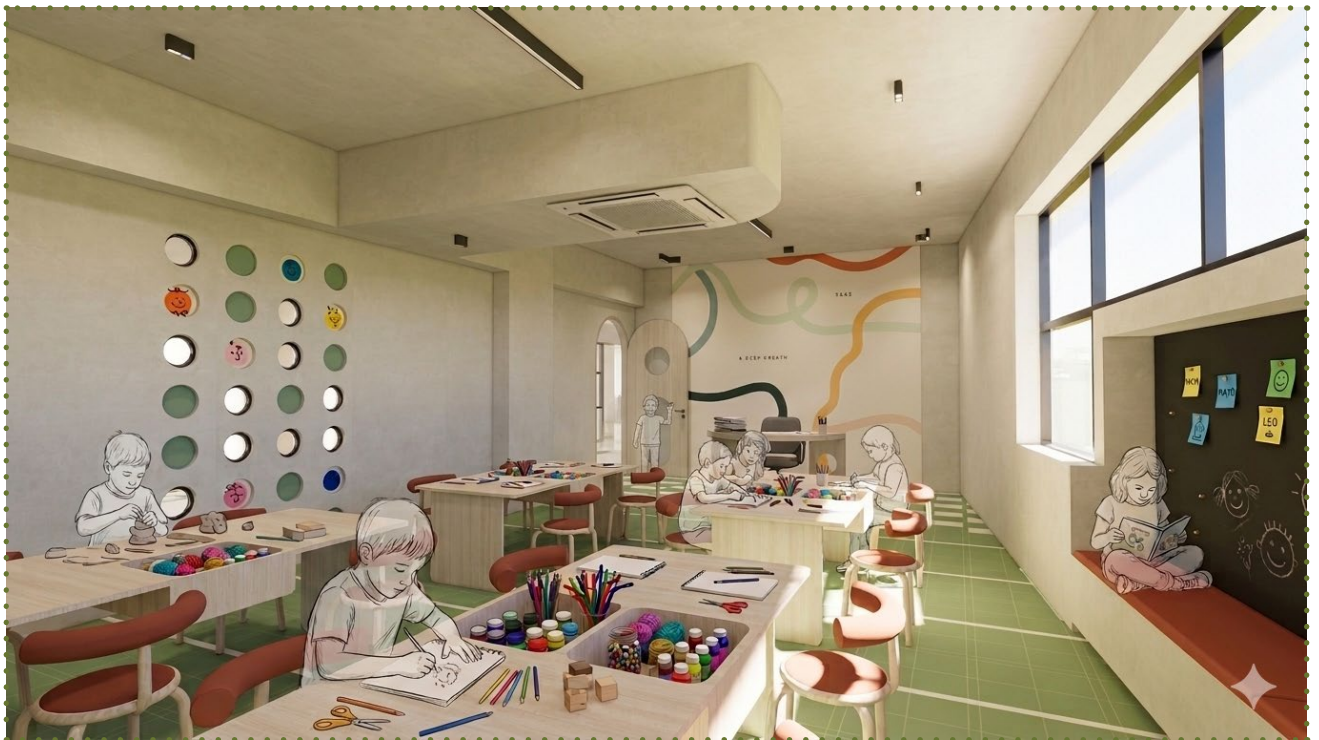
SOURCE: GEMINI AI

SECOND FLOOR  
Kids washroom



SOURCE: GEMINI AI

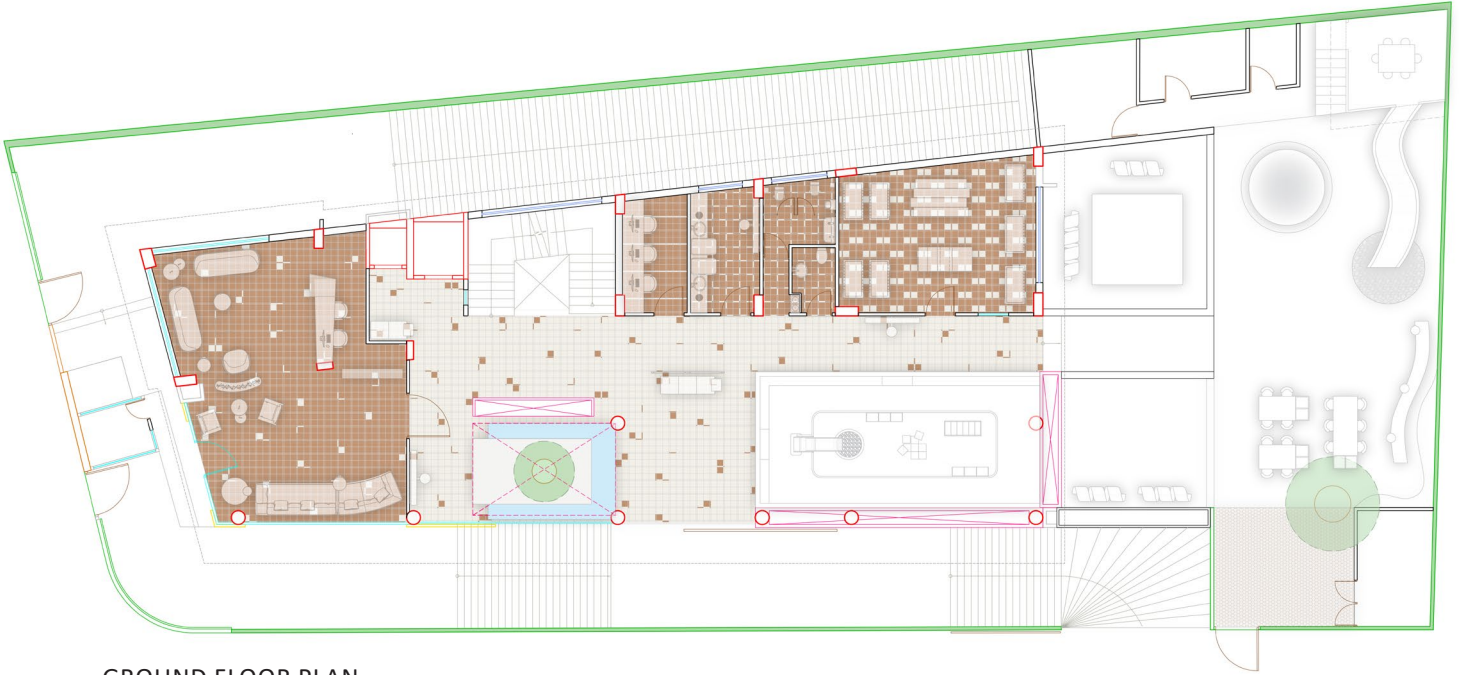
FOURTH FLOOR  
Workshop area



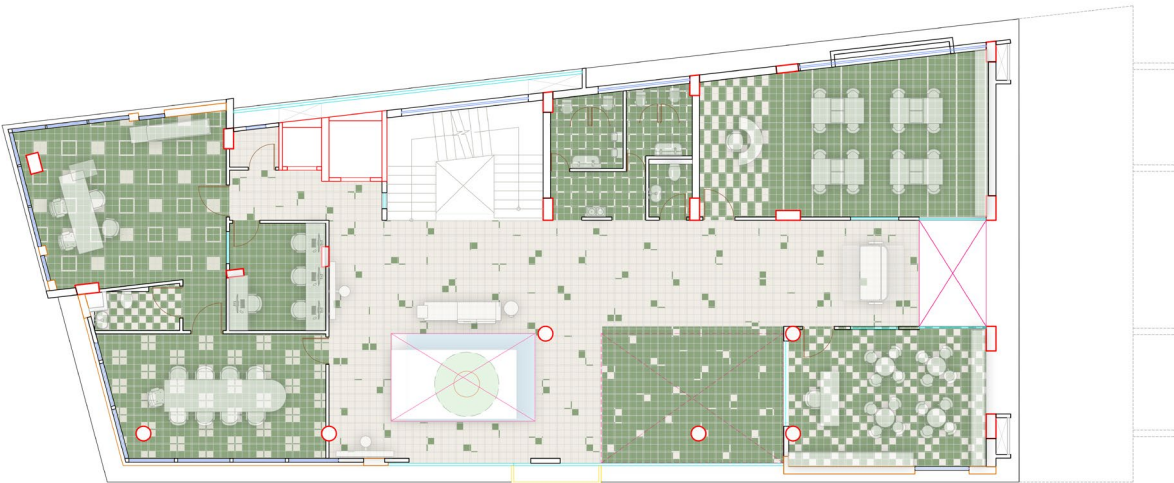
SOURCE: GEMINI AI

FIRST FLOOR  
Art & Craft room

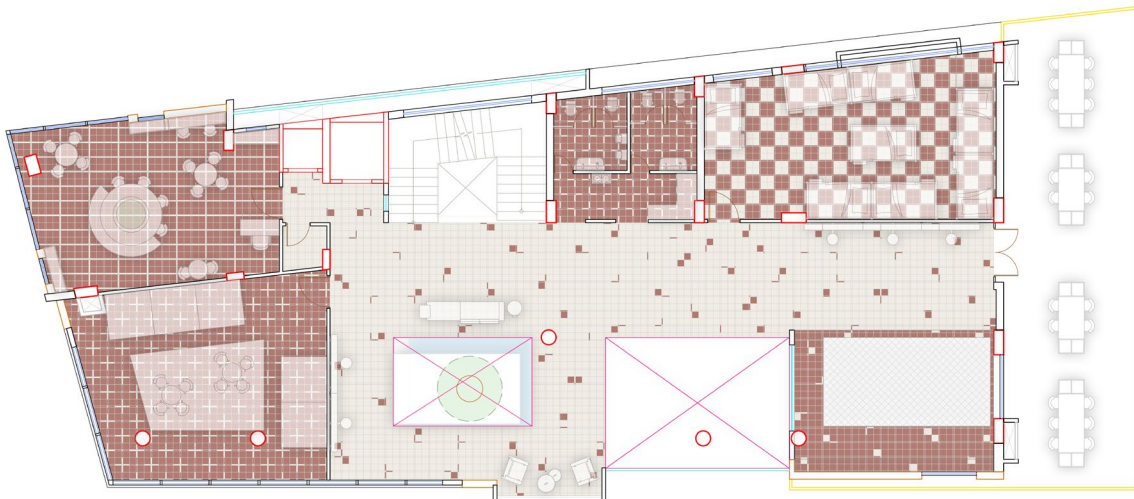
# FLOORING LAYOUT



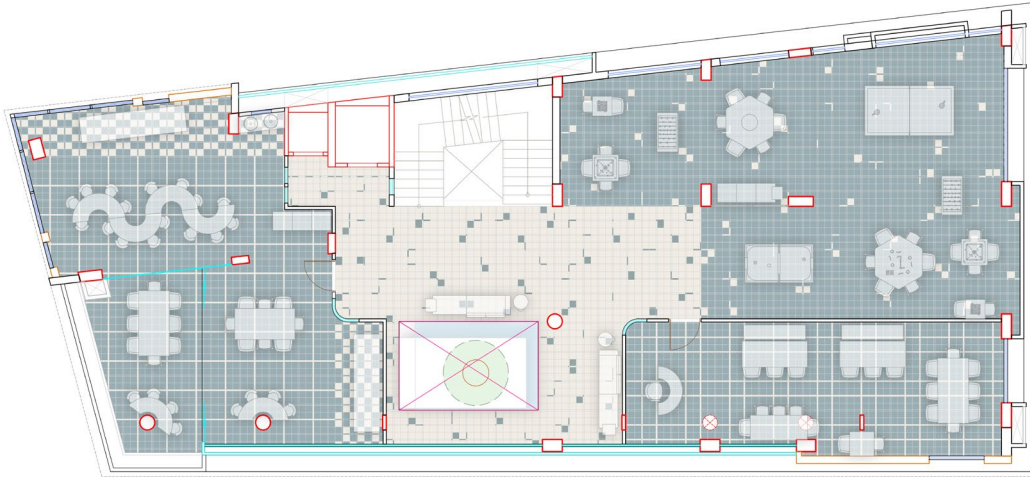
GROUND FLOOR PLAN



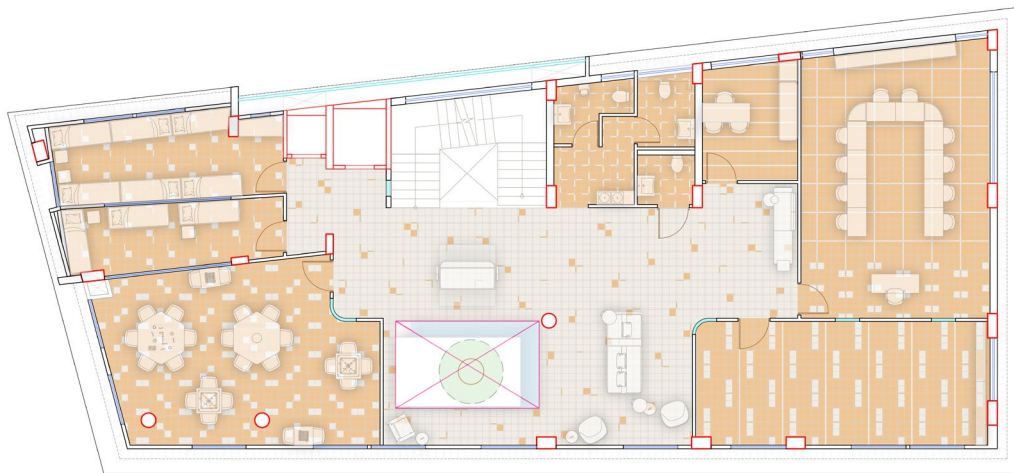
FIRST FLOOR PLAN



SECOND FLOOR PLAN



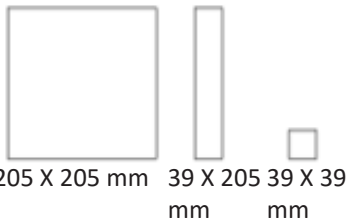
THIRD FLOOR PLAN



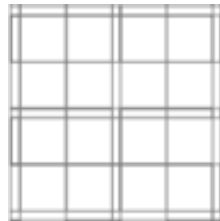
FOURTH FLOOR PLAN

**Mutina Tiles**

*Time by barber & Osgerby*  
 Porcelain stoneware tile  
 12 mm thickness



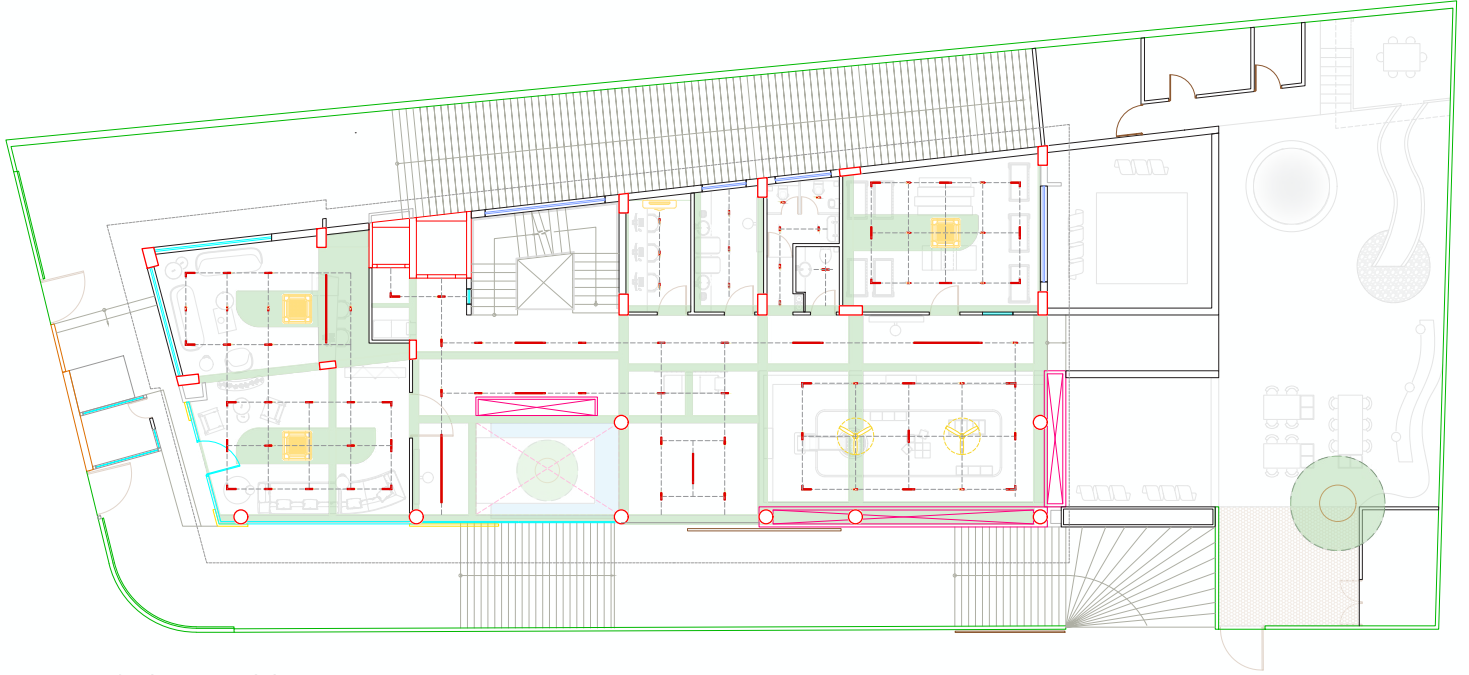
**Base grid**



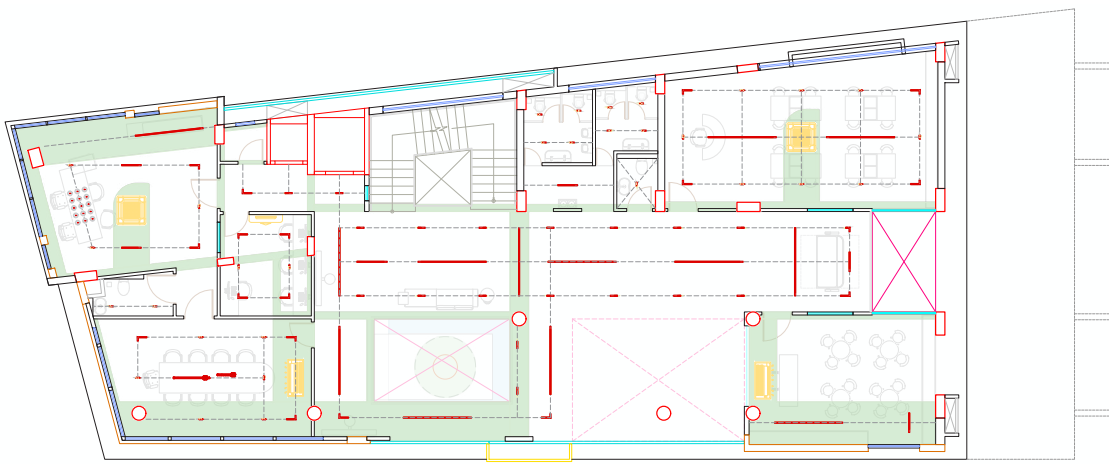
**Colours/finishes**



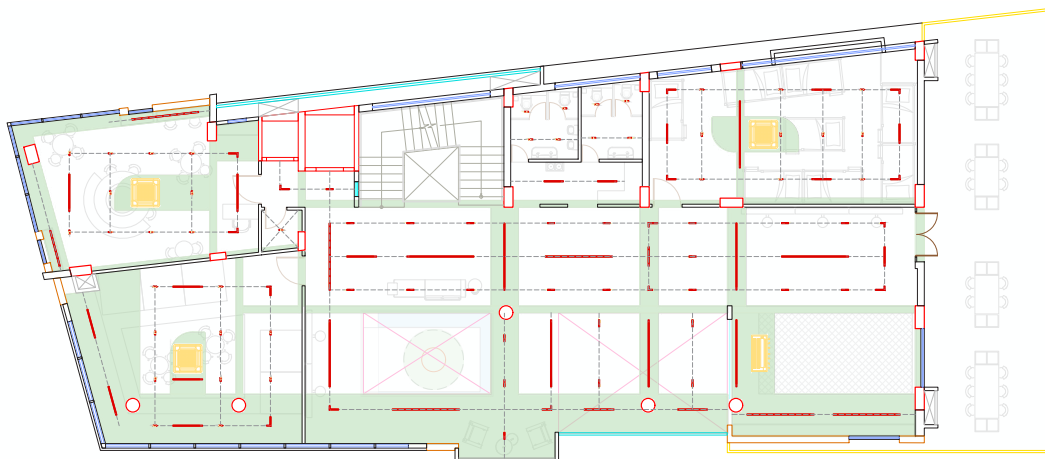
# SERVICES LAYOUT



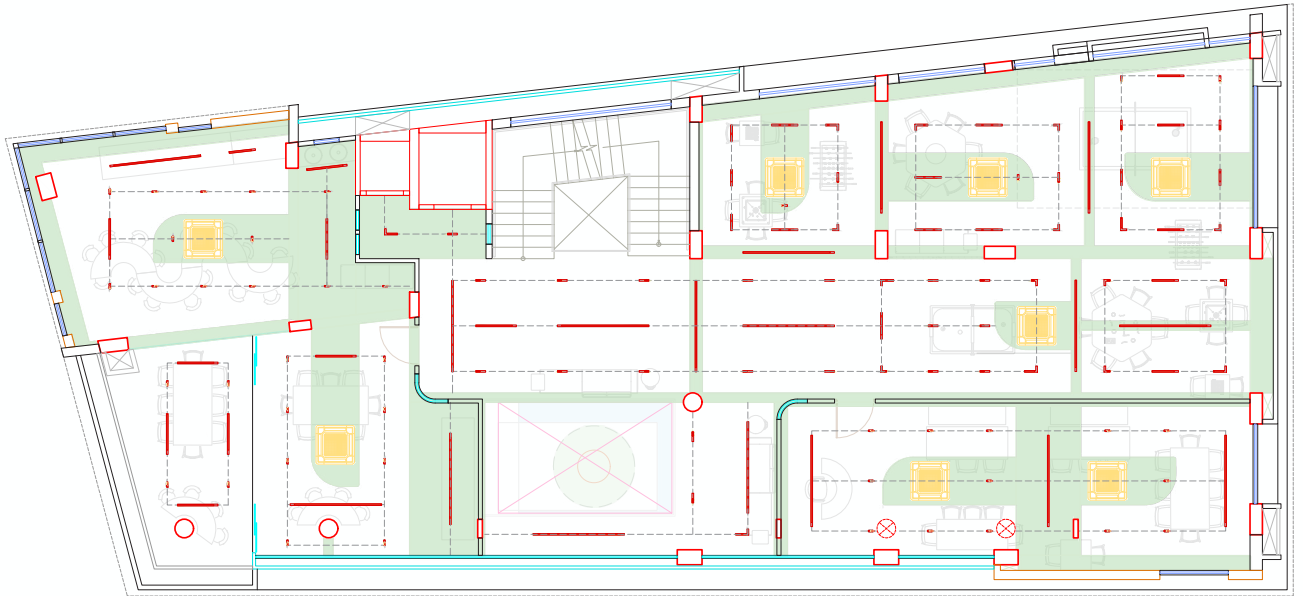
GROUND FLOOR PLAN



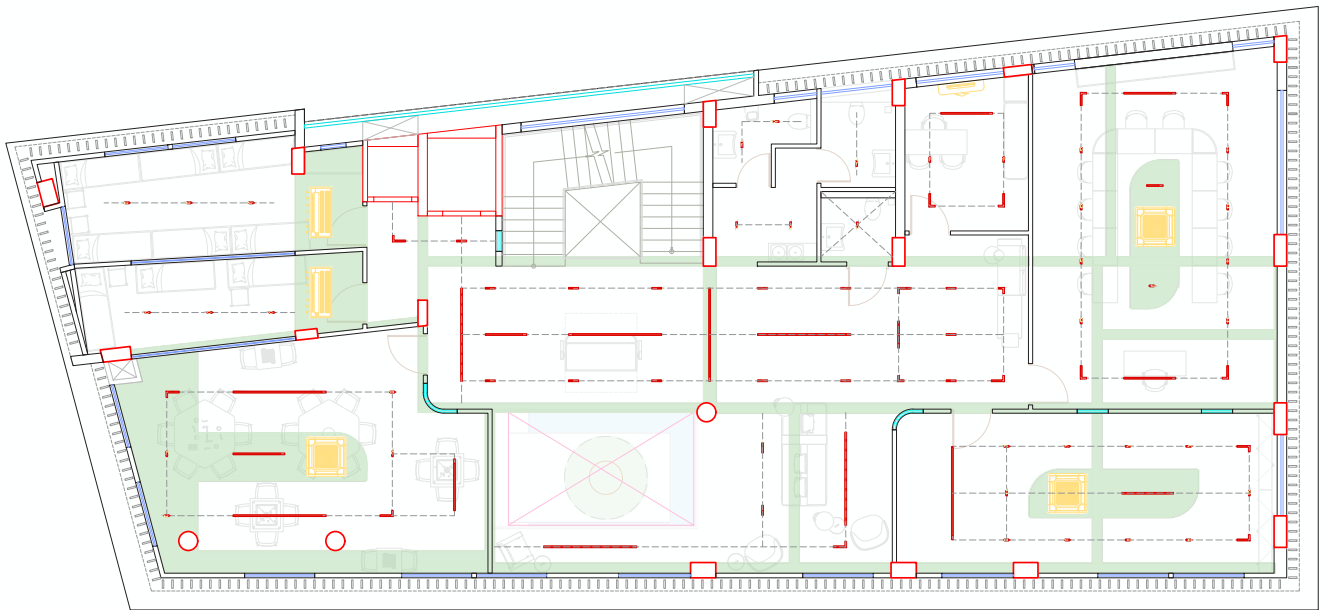
FIRST FLOOR PLAN



SECOND FLOOR PLAN



THIRD FLOOR PLAN



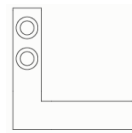
FOURTH FLOOR PLAN



VIBIA Offset  
40 X 140 X 70 mm



VIBIA Offset  
250 X 40 X 70 mm



VIBIA Offset  
150 X 150 X 70 mm



VIBIA Offset  
400/650/1000/1250/250 X 40 X 70 mm



VIBIA Offset  
310 X 150 X 70 mm



PLUSTECH Loop duo perdu  
127 X 137 X 70 mm



POP CEILING 535  
mm down



SECTION BB'

**Clayworks**  
 Rammed Earth finishes  
 10 mm thickness  
 100% Natural Clay  
 Sustainable

YELLOW					
YEL-01	YEL-02	YEL-03	YEL-04	YEL-05	YEL-06
TURQUOISE					
TUR-01	TUR-02	TUR-03	TUR-04	TUR-05	TUR-06
RED			PINK		
RED-01	RED-02	RED-03	RED-04	PNK-01	PNK-02
GREEN					
GRE-01	GRE-02	GRE-03	GRE-04	GRE-05	GRE-06
BROWN					
BRO-01	BRO-02	BRO-03	BRO-04	BRO-05	BRO-06

Without Accent Stripes

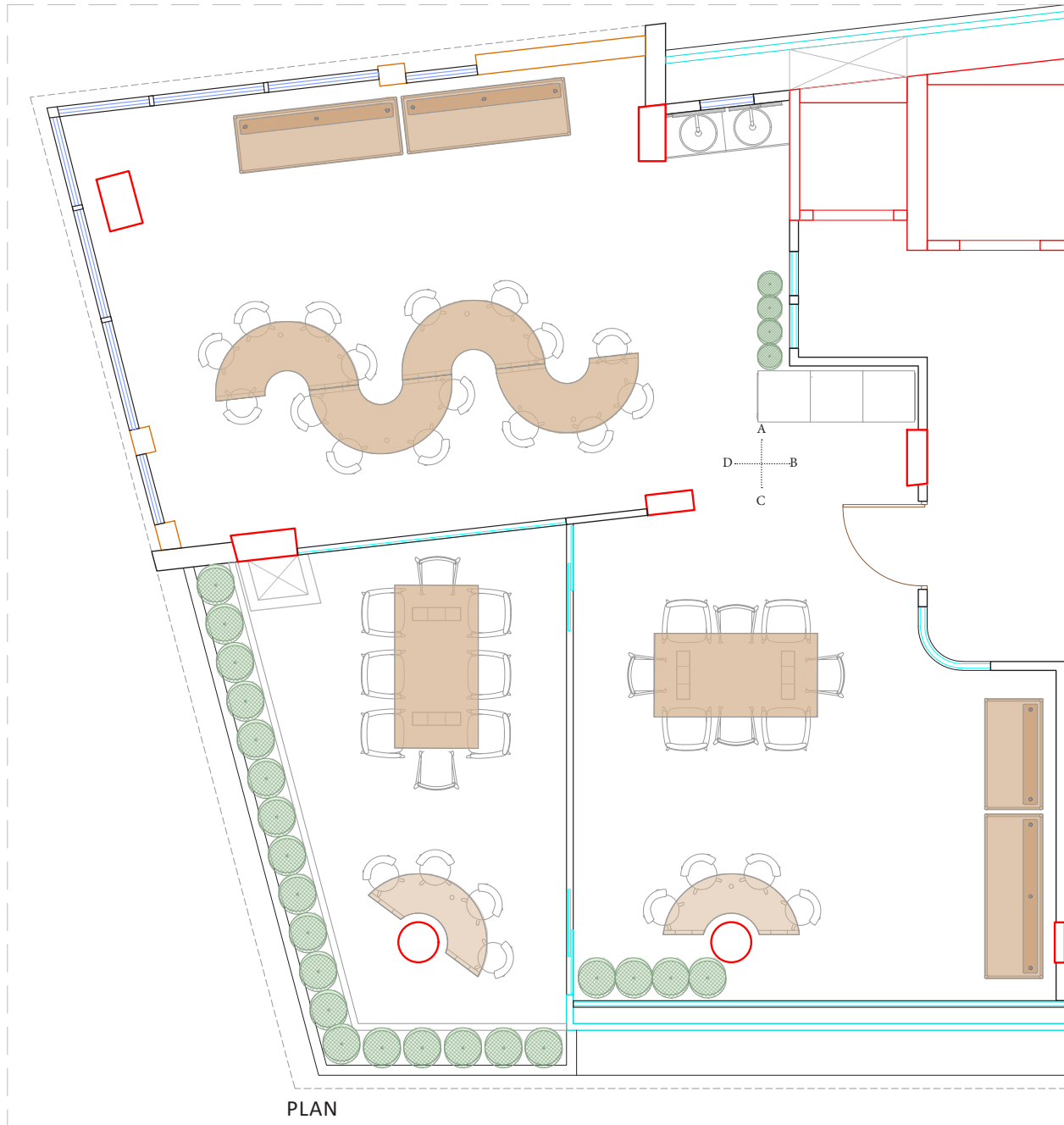
Depth: 8-10mm interior, 20-22mm exterior

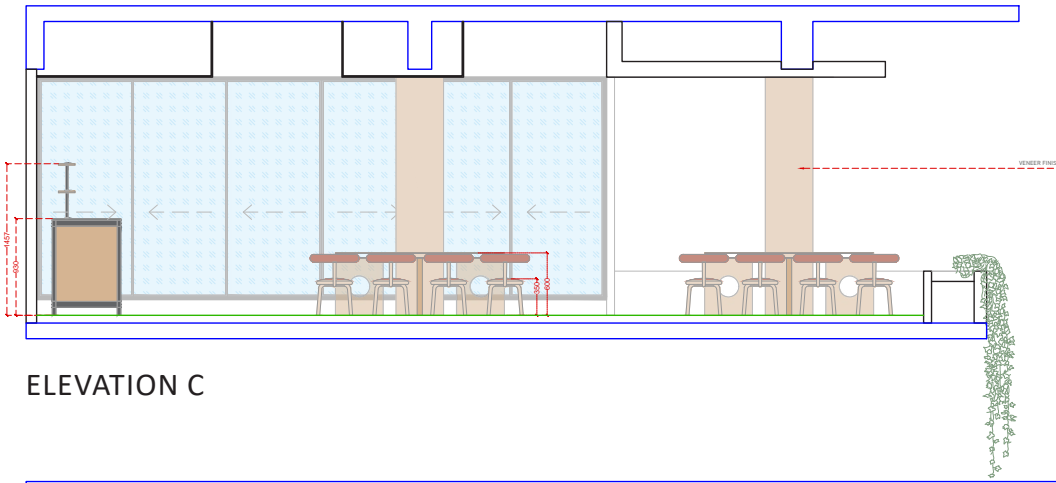


SECTION AA'

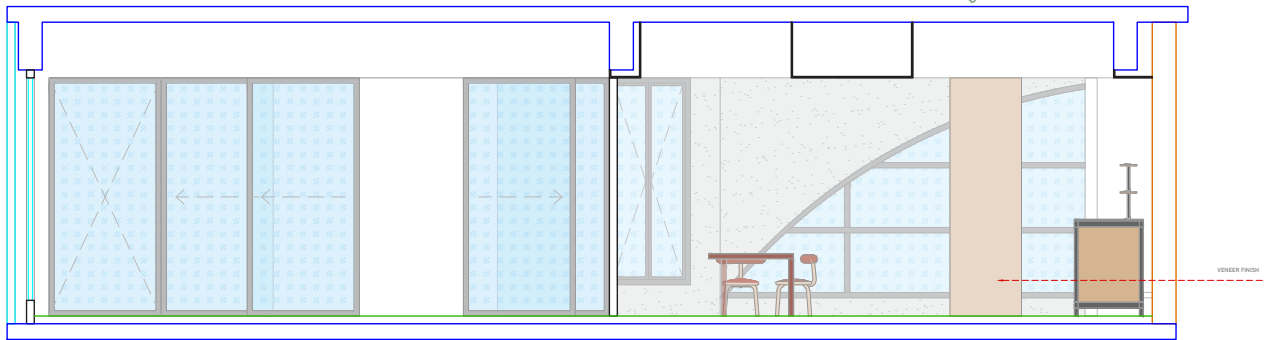
# DETAILED SPACE

## THIRD FLOOR - DINING AREA



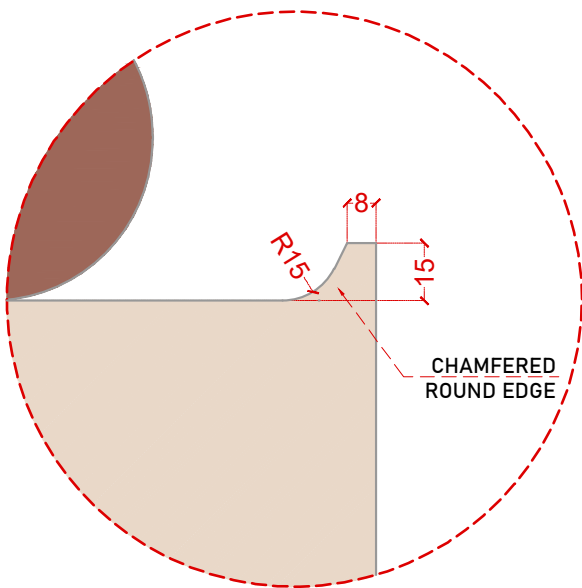


ELEVATION C

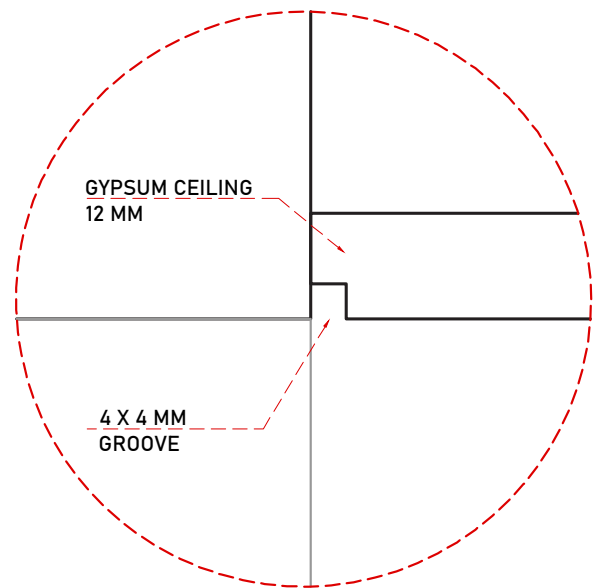


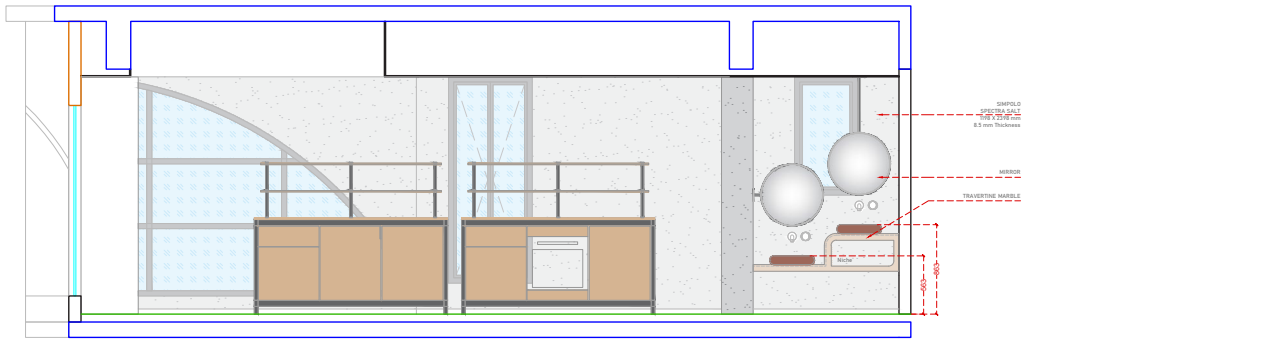
ELEVATION D

DETAIL A

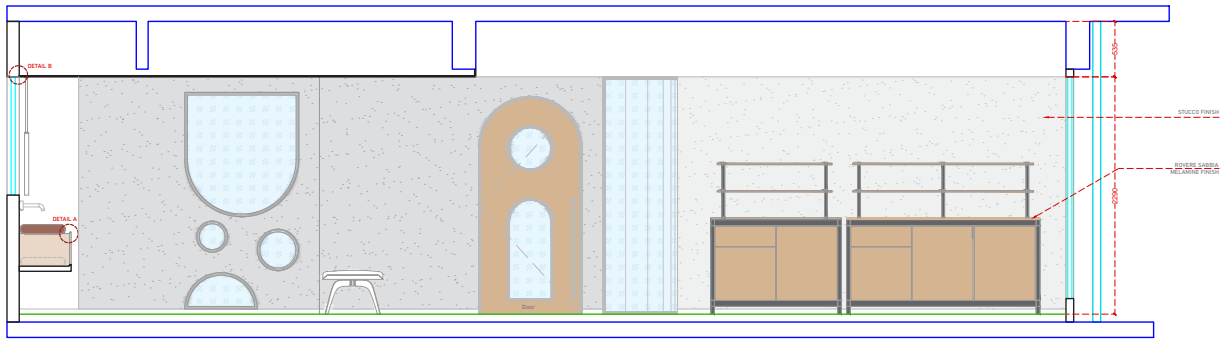


DETAIL B





ELEVATION A



ELEVATION B



MARTEX  
Fluid kitchenette



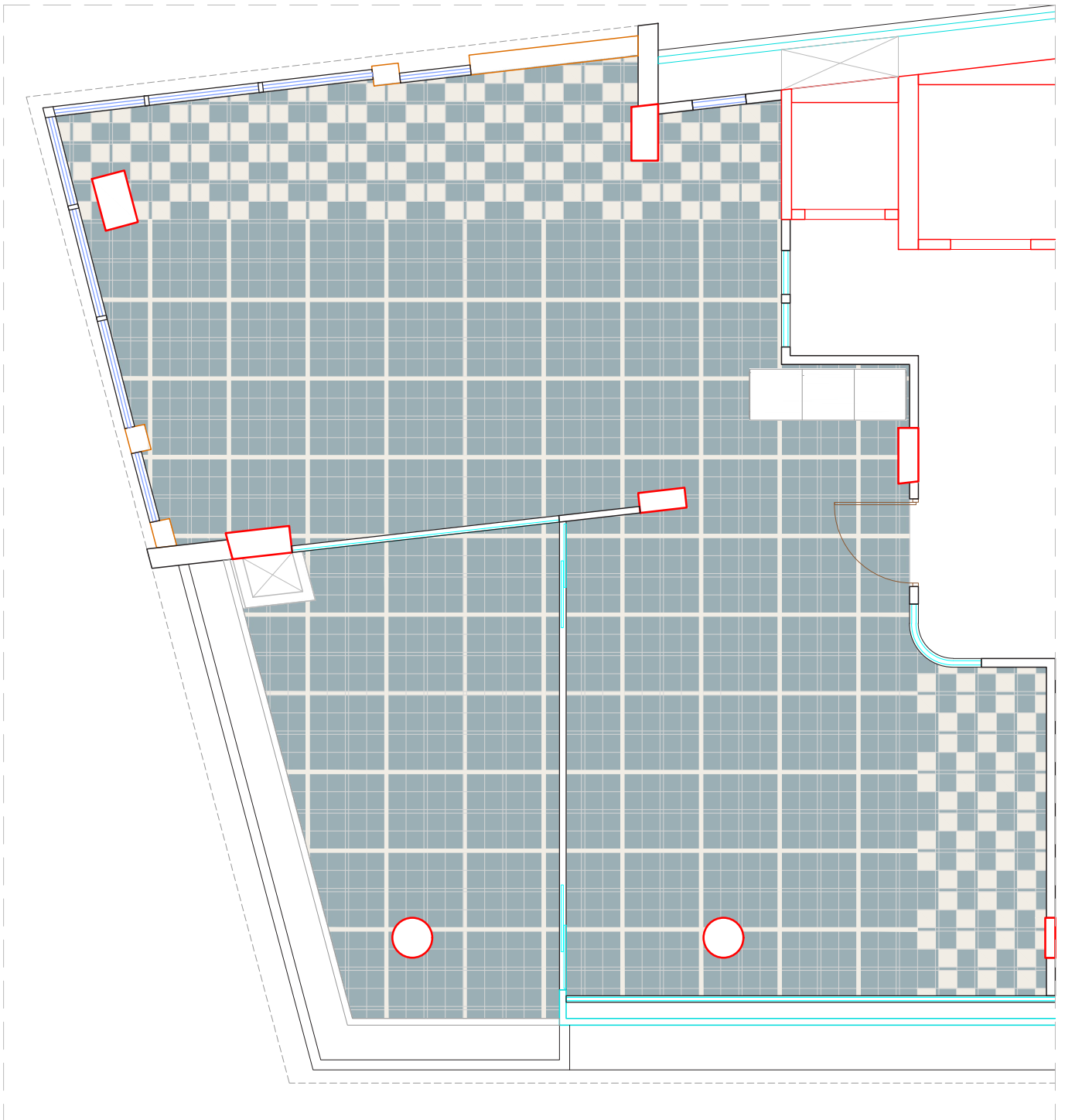
FALPER  
Clear hanging mirror



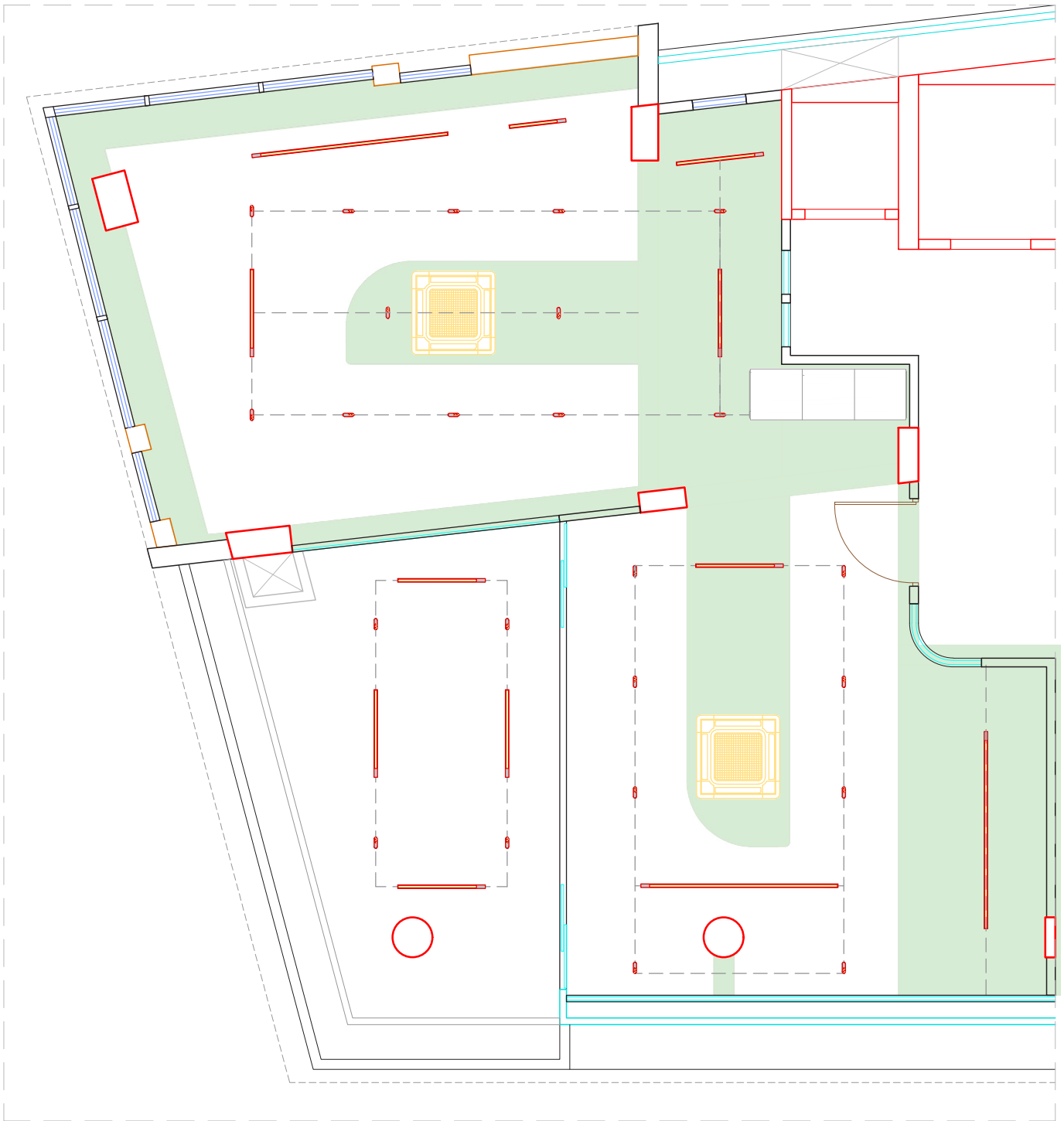
INBANI  
Ease



PLUS HALLE  
Torno chair



FLOORING LAYOUT



SEVICES LAYOUT



SOURCE: GEMINI AI

THIRD FLOOR  
DINING AREA

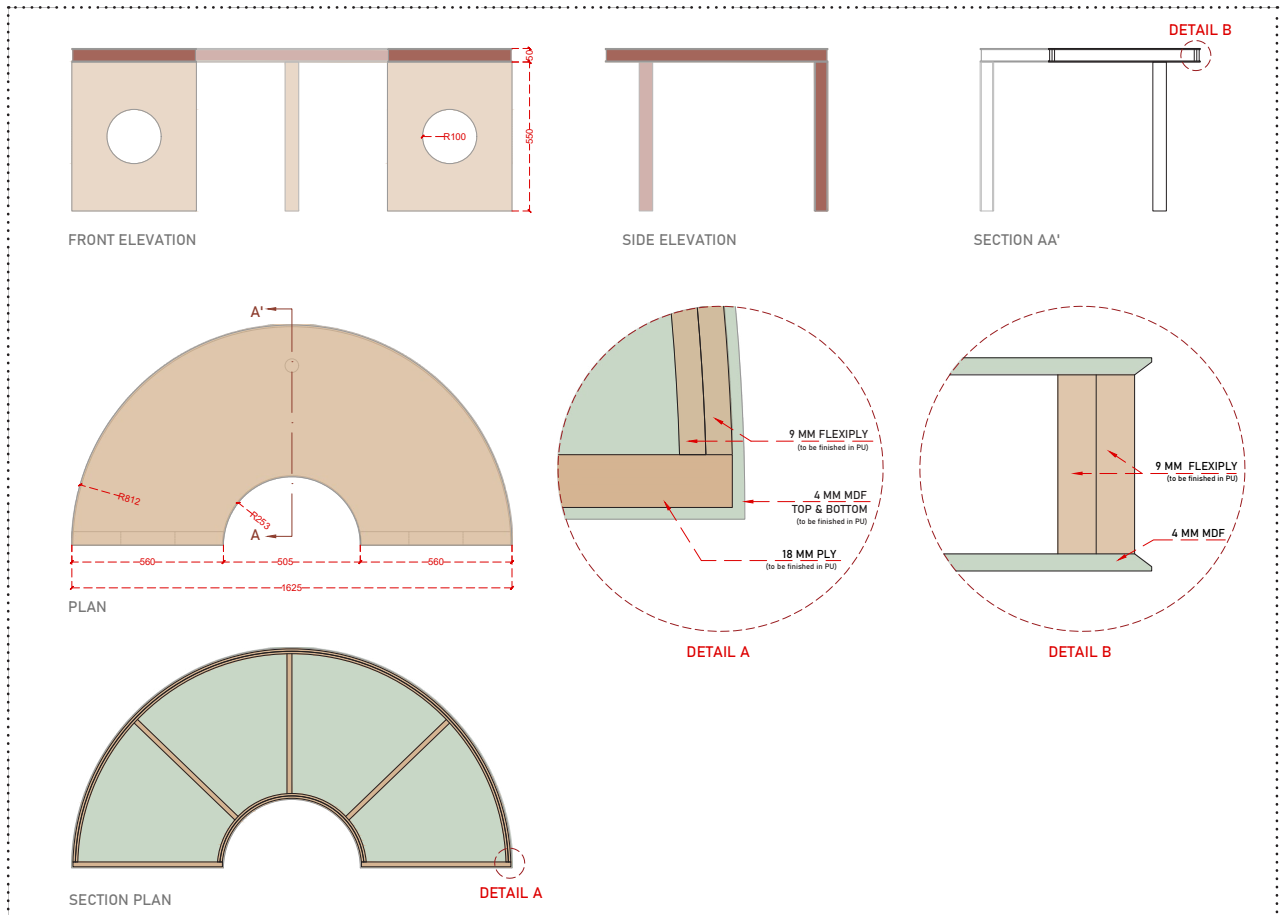


SOURCE: GEMINI AI

THIRD FLOOR  
DINING AREA

## FURNITURE DETAIL

### KIDS DINING TABLE



# FURNITURE BRANDS



MIZETTO - Understand



INCLASS - orus



TRUE DESIGN - Ethrio



TRUE DESIGN - Fender



TRUE DESIGN - Lisa



TRUE DESIGN - Sibilino



MIZETTO - Lumber wall



VITRA - Sento kids



TRUE DESIGN - Millepedi



SALVATORI - Anima



TRUE DESIGN - Patch



TRUE DESIGN - Nomade



FREDERICIA - Canvas chair



MIZETTO - DNA



RAFA KIDS - Rocking cot



HARROWS - Revel