

RAWAFID

WHERE EVERY JOURNEY FINDS IT'S DIRECTION

CONCEPT
THE PROJECT IS CONCEIVED AS A PLATFORM FOR WOMEN'S EMPOWERMENT, BRINGING TOGETHER EDUCATION, ENTREPRENEURSHIP, INNOVATION, AND COMMUNITY SUPPORT WITHIN A SINGLE ENVIRONMENT. A STRONG VERTICAL CORE ANCHORS A SERIES OF LAYERED CANTILEVERED PLATFORMS THAT SYMBOLIZE GROWTH, OPPORTUNITY, AND LEADERSHIP. THROUGH COLLABORATIVE WORKSPACES, TRAINING FACILITIES, AND PUBLIC GATHERING AREAS, THE BUILDING CREATES A CLEAR PATHWAY FOR WOMEN TO LEARN, CONNECT, INNOVATE, AND THRIVE.

KEYWORDS
LAYERING - CONNECTIVITY - INDEPENDENCE - VERTICAL EXPANSION

uia    

PRESENTED BY: OMAR AHMED MOSTAFA
SUPERVISION: DR. INGY EL BAREMELGY





GROUND FLOOR SCALE 1:200



EXTERIOR SHOT



USER EXPERIENCE



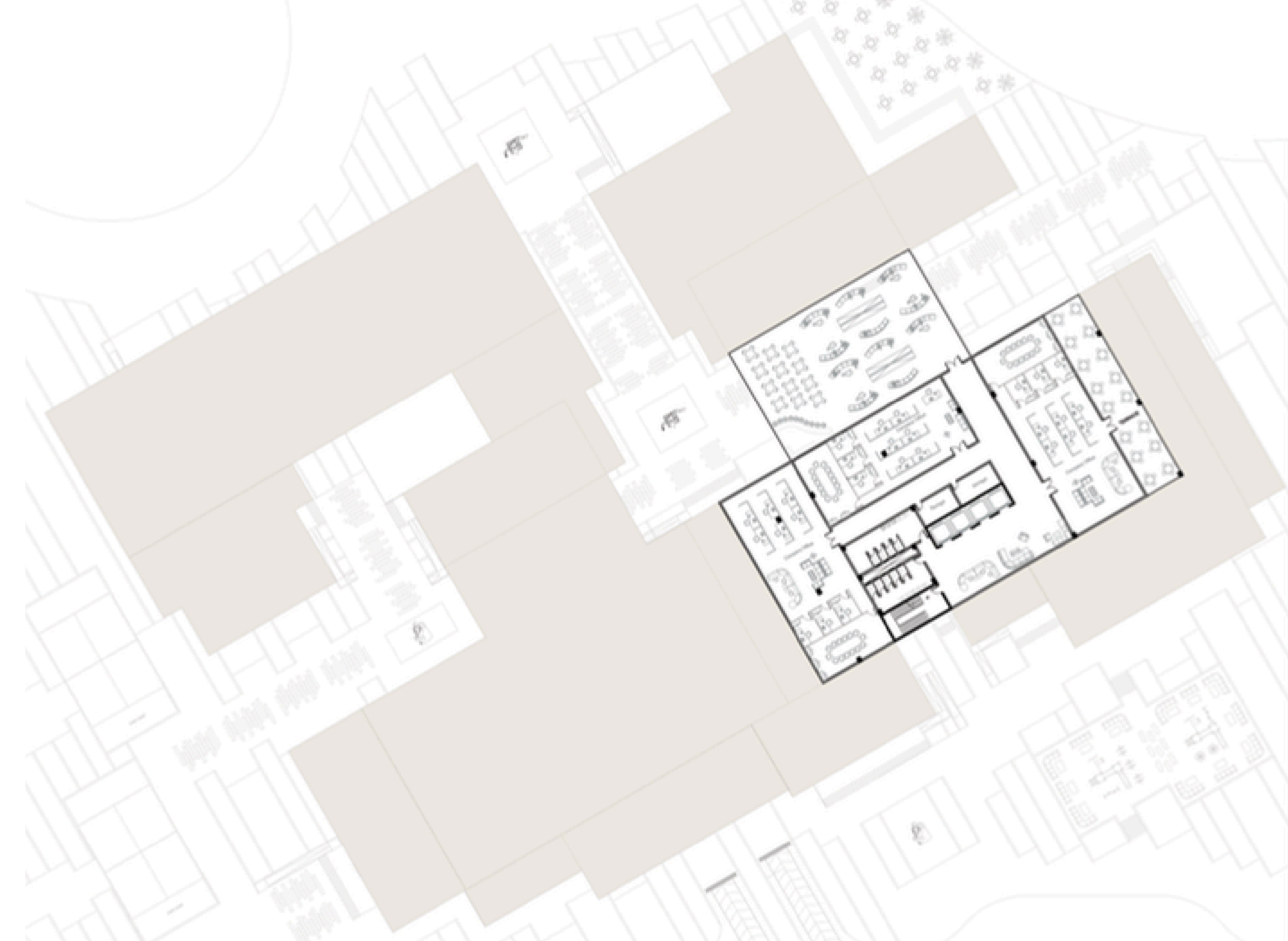
MONUMENTAL PUBLIC ENTRANCE



TERRACE CO-WORKING SPACE



THIRD FLOOR SCALE 1:400



TYPICAL OFFICE FLOOR SCALE 1:400

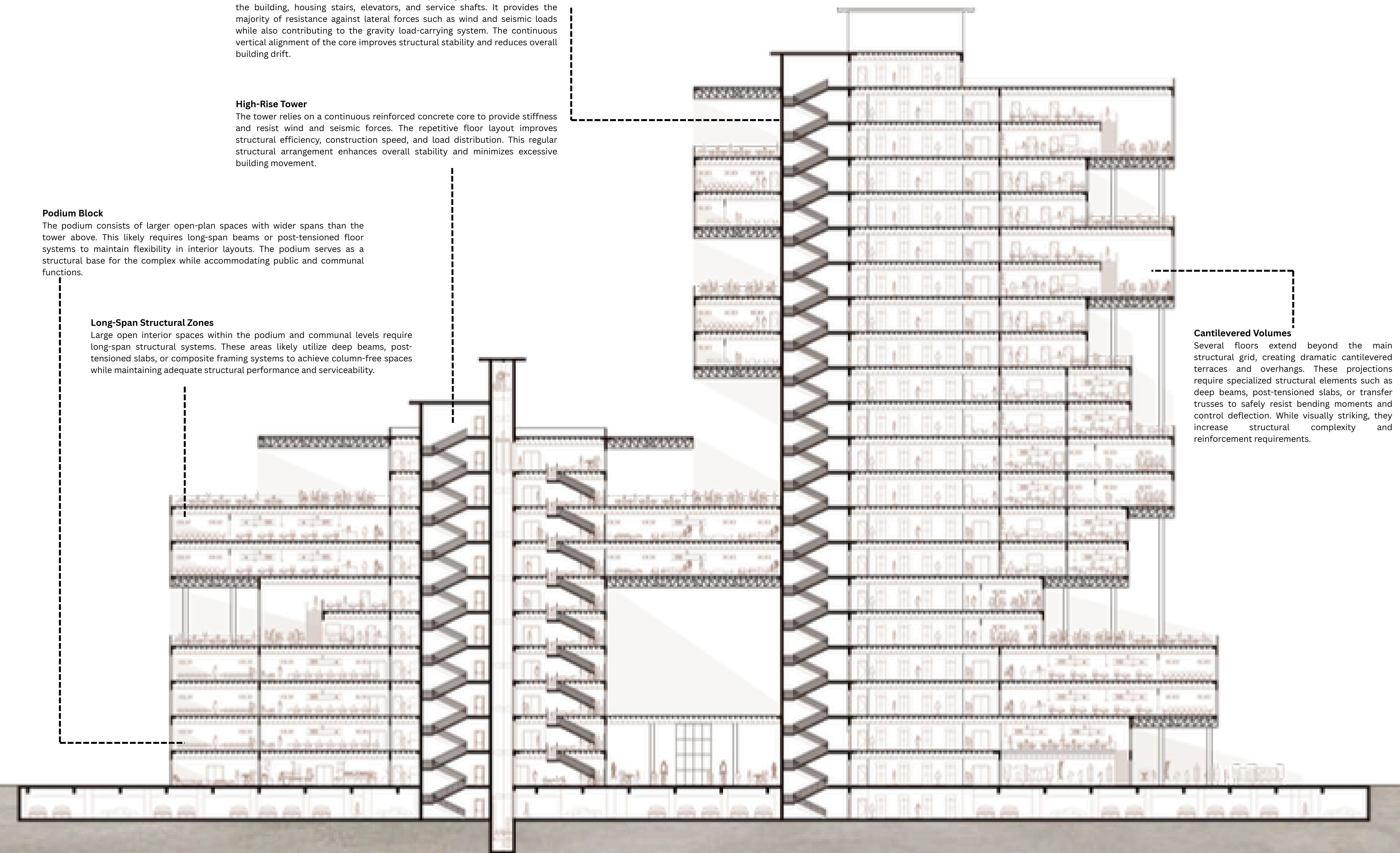
Core Wall
 The reinforced concrete core wall acts as the primary structural backbone of the building, housing stairs, elevators, and service shafts. It provides the majority of resistance against lateral forces such as wind and seismic loads while also contributing to the gravity load-carrying system. The continuous vertical alignment of the core improves structural stability and reduces overall building drift.

High-Rise Tower
 The tower relies on a continuous reinforced concrete core to provide stiffness and resist wind and seismic forces. The repetitive floor layout improves structural efficiency, construction speed, and load distribution. This regular structural arrangement enhances overall stability and minimizes excessive building movement.

Podium Block
 The podium consists of larger open-plan spaces with wider spans than the tower above. This likely requires long-span beams or post-tensioned floor systems to maintain flexibility in interior layouts. The podium serves as a structural base for the complex while accommodating public and communal functions.

Long-Span Structural Zones
 Large open interior spaces within the podium and communal levels require long-span structural systems. These areas likely utilize deep beams, post-tensioned slabs, or composite framing systems to achieve column-free spaces while maintaining adequate structural performance and serviceability.

Cantilevered Volumes
 Several floors extend beyond the main structural grid, creating dramatic cantilevered terraces and overhangs. These projections require specialized structural elements such as deep beams, post-tensioned slabs, or transfer trusses to safely resist bending moments and control deflection. While visually striking, they increase structural complexity and reinforcement requirements.



SECTION SCALE 1:200



EXTERIOR SHOT



EXTERIOR SHOT