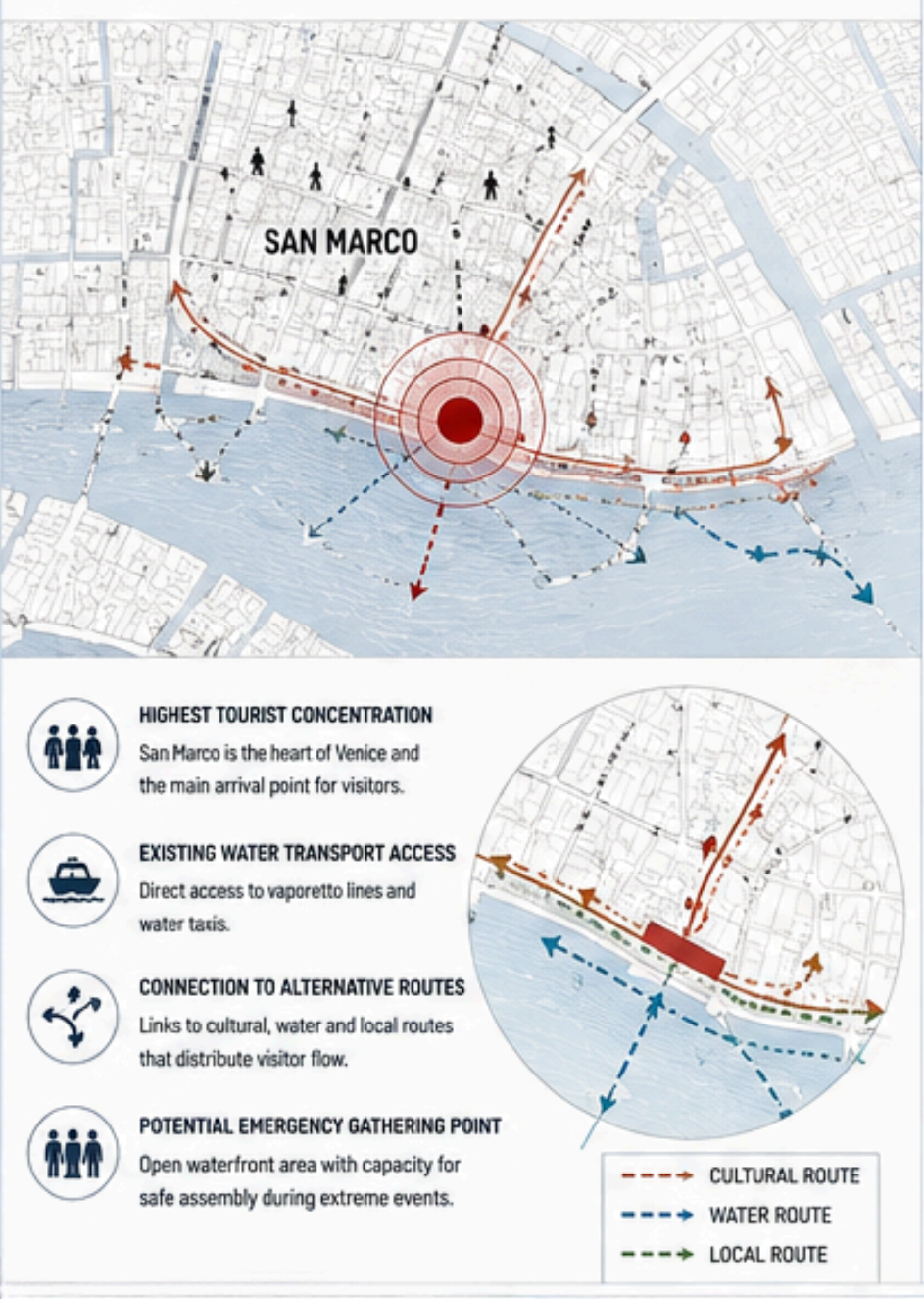
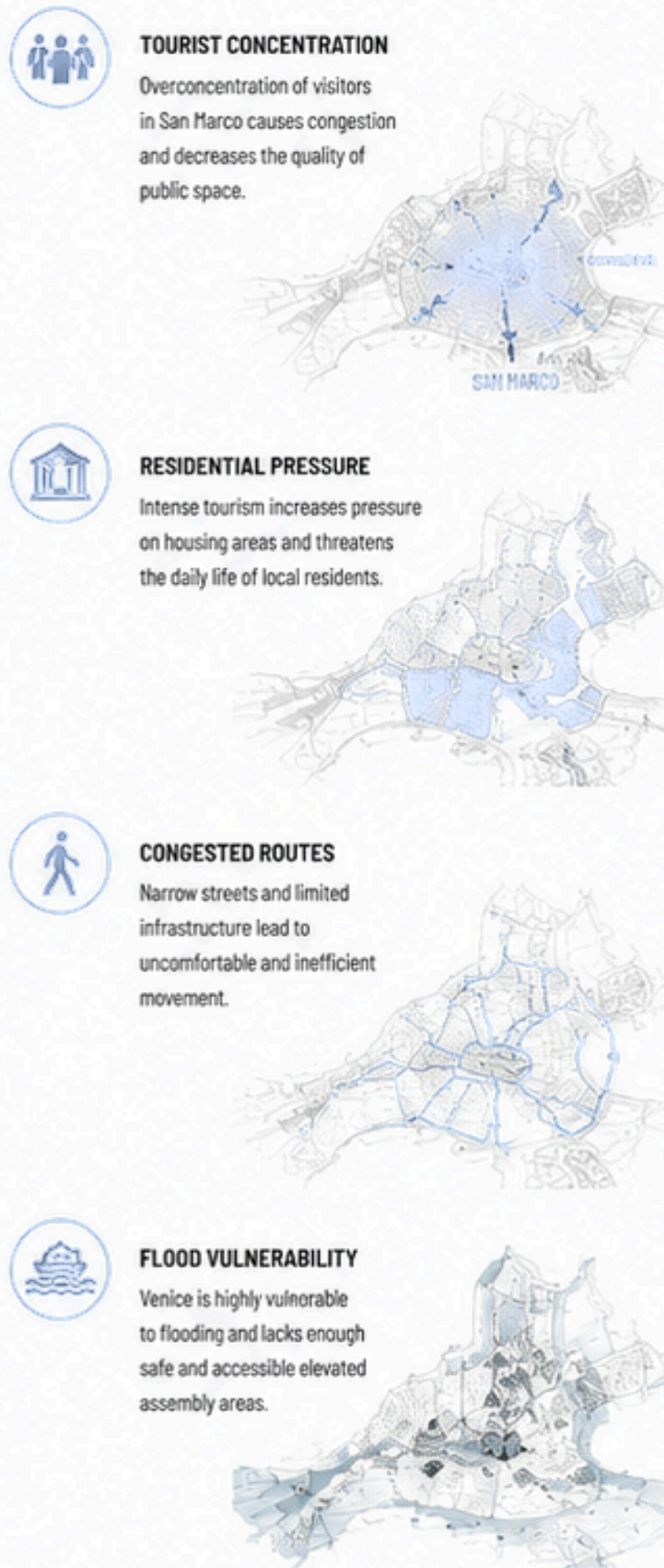


# SOGLIA DI VENEZIA

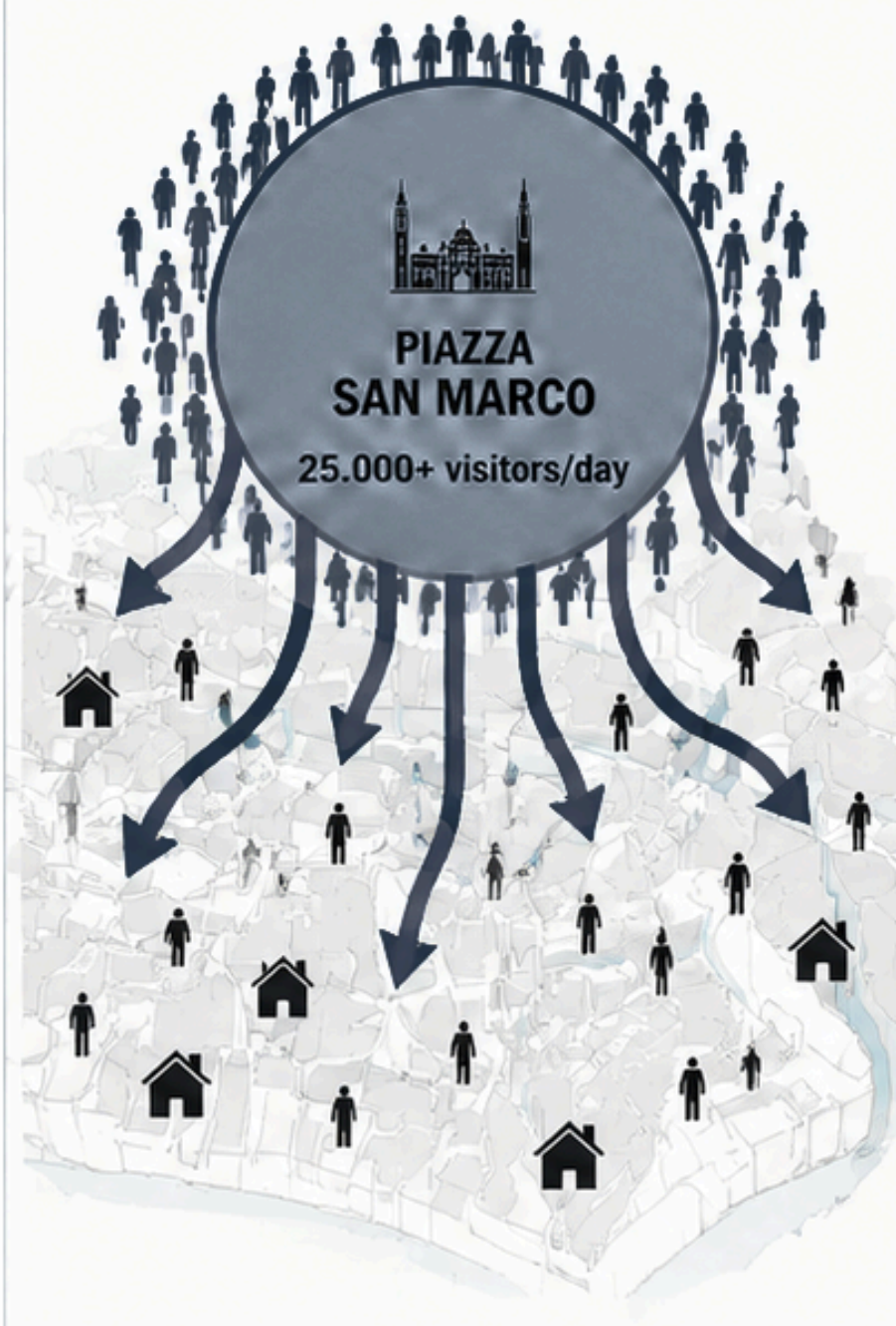
## A. SITE SELECTION WHY THIS LOCATION?



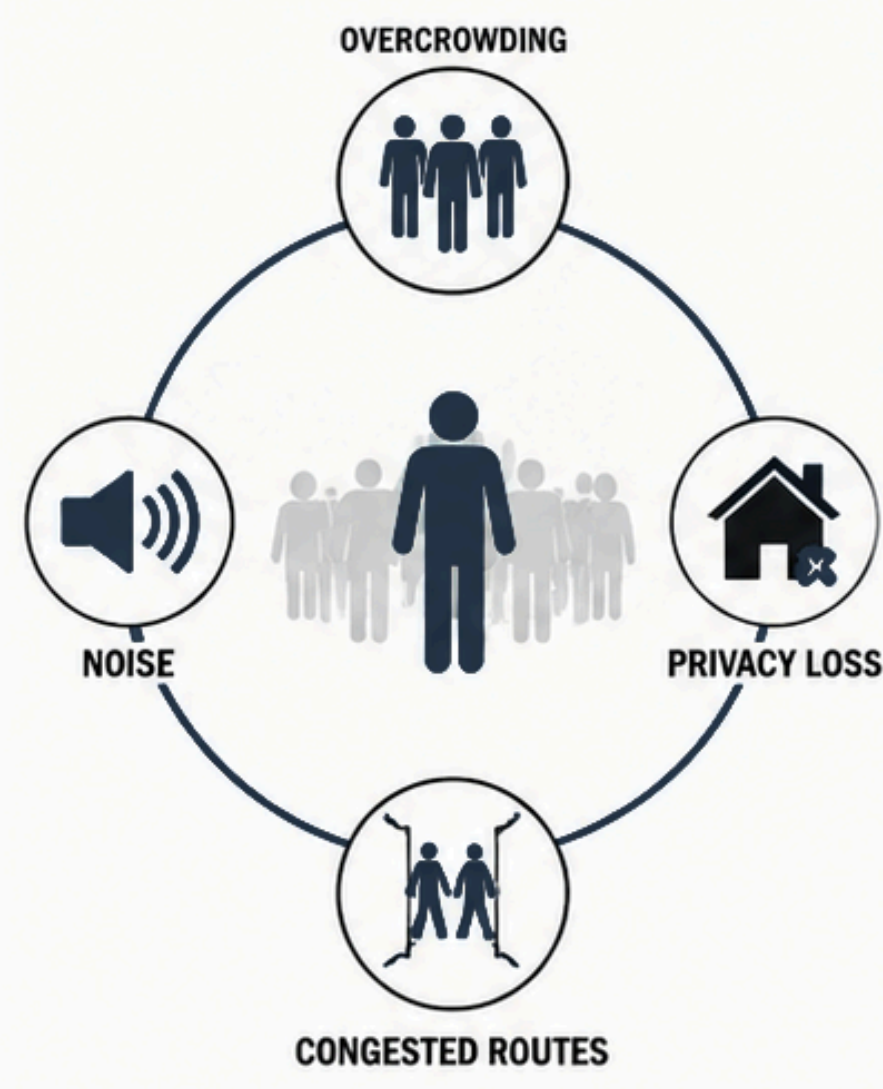
## PROBLEMS



## 1. CURRENT SITUATION UNCONTROLLED TOURIST FLOWS

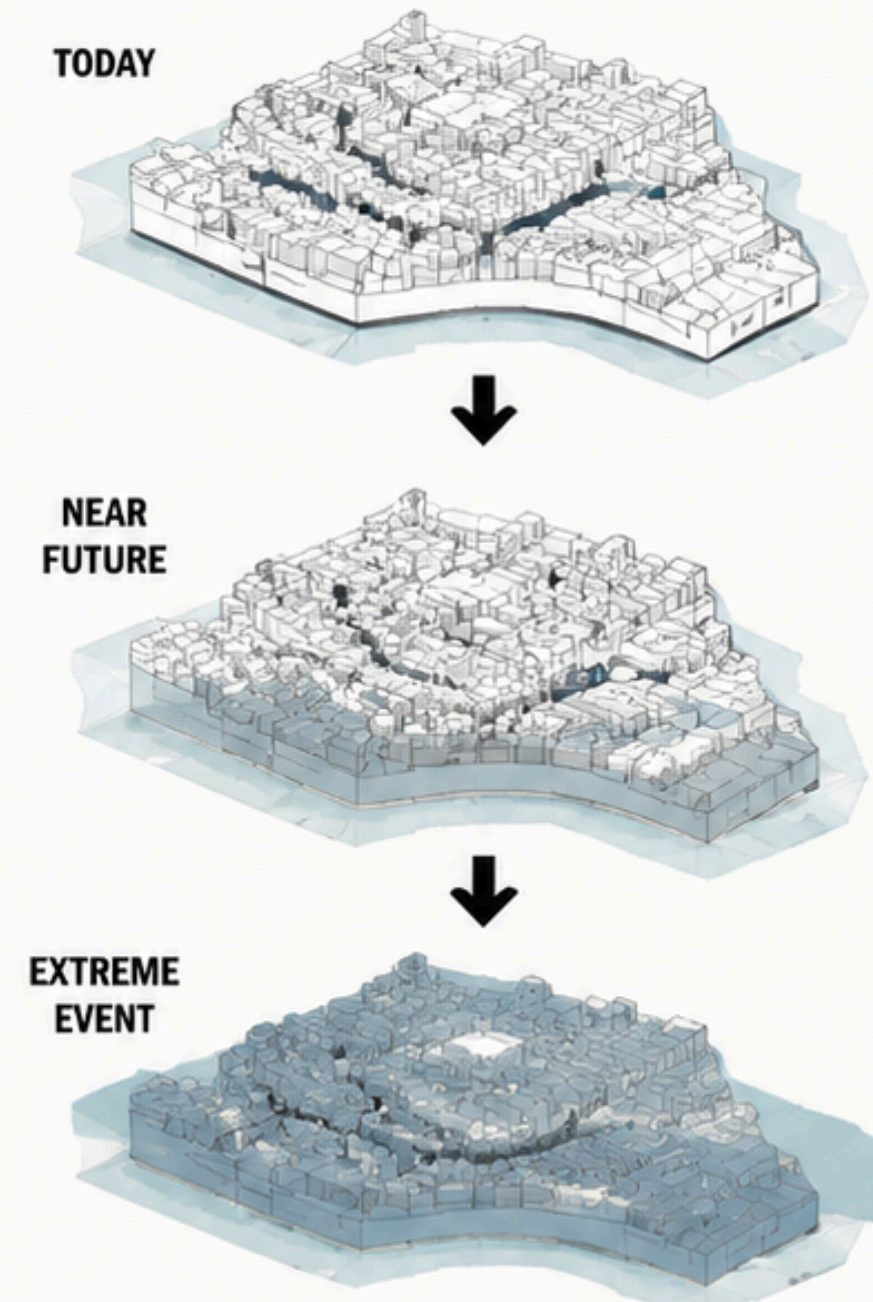


## 2. CONSEQUENCES PRESSURE ON THE CITY AND ITS PEOPLE

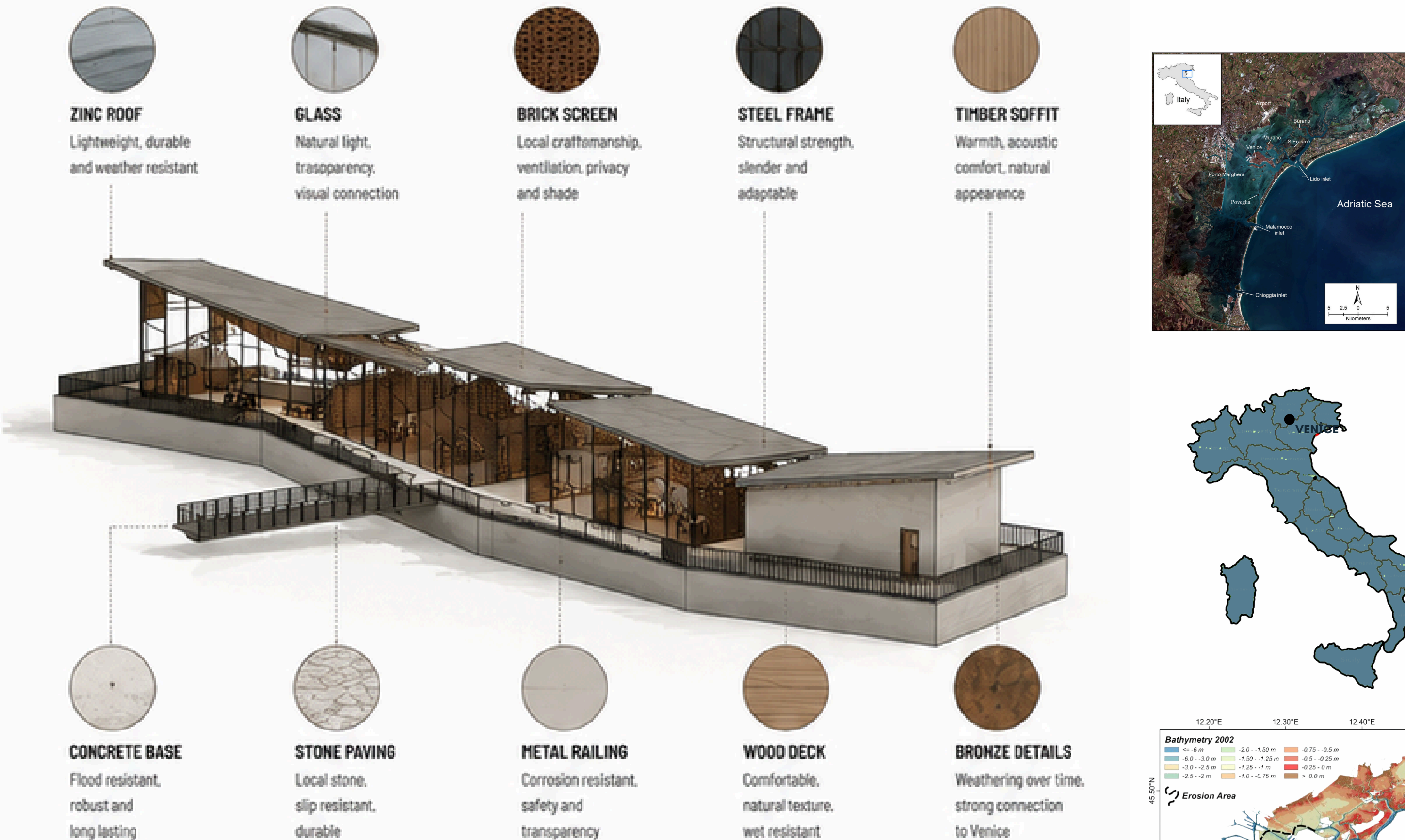


The concentration of visitors around San Marco creates **continuous pressure** on Venice's fragile urban fabric and reduces quality of life for residents.

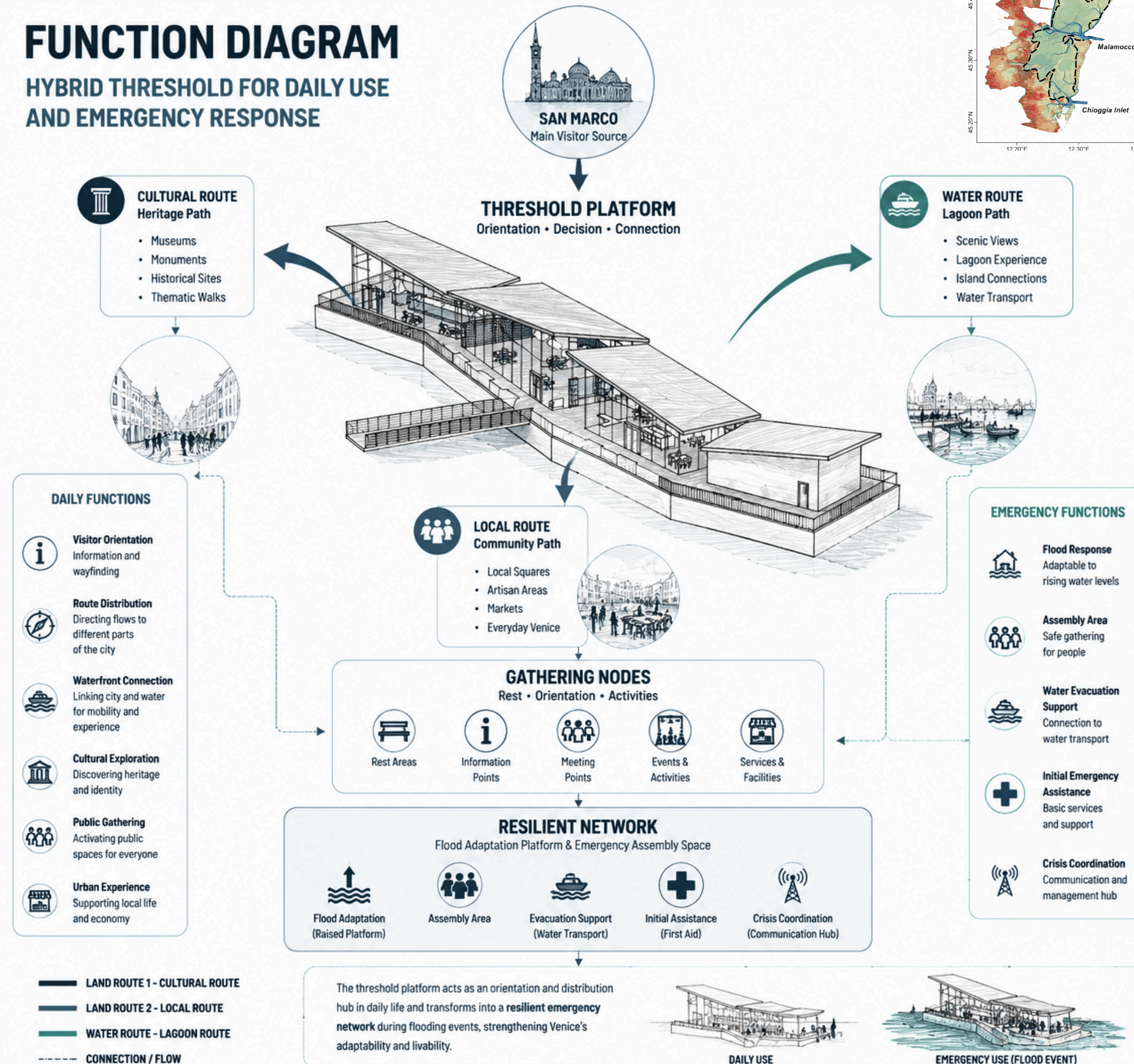
## 3. EMERGENCY VULNERABILITY UNPREPARED FOR EXTREME EVENTS



**VENICE DOES NOT SUFFER FROM A LACK OF VISITORS. IT SUFFERS FROM A LACK OF CONTROLLED MOVEMENT.**  
The challenge is not attracting people, but guiding them through the city without



## FUNCTION DIAGRAM HYBRID THRESHOLD FOR DAILY USE AND EMERGENCY RESPONSE

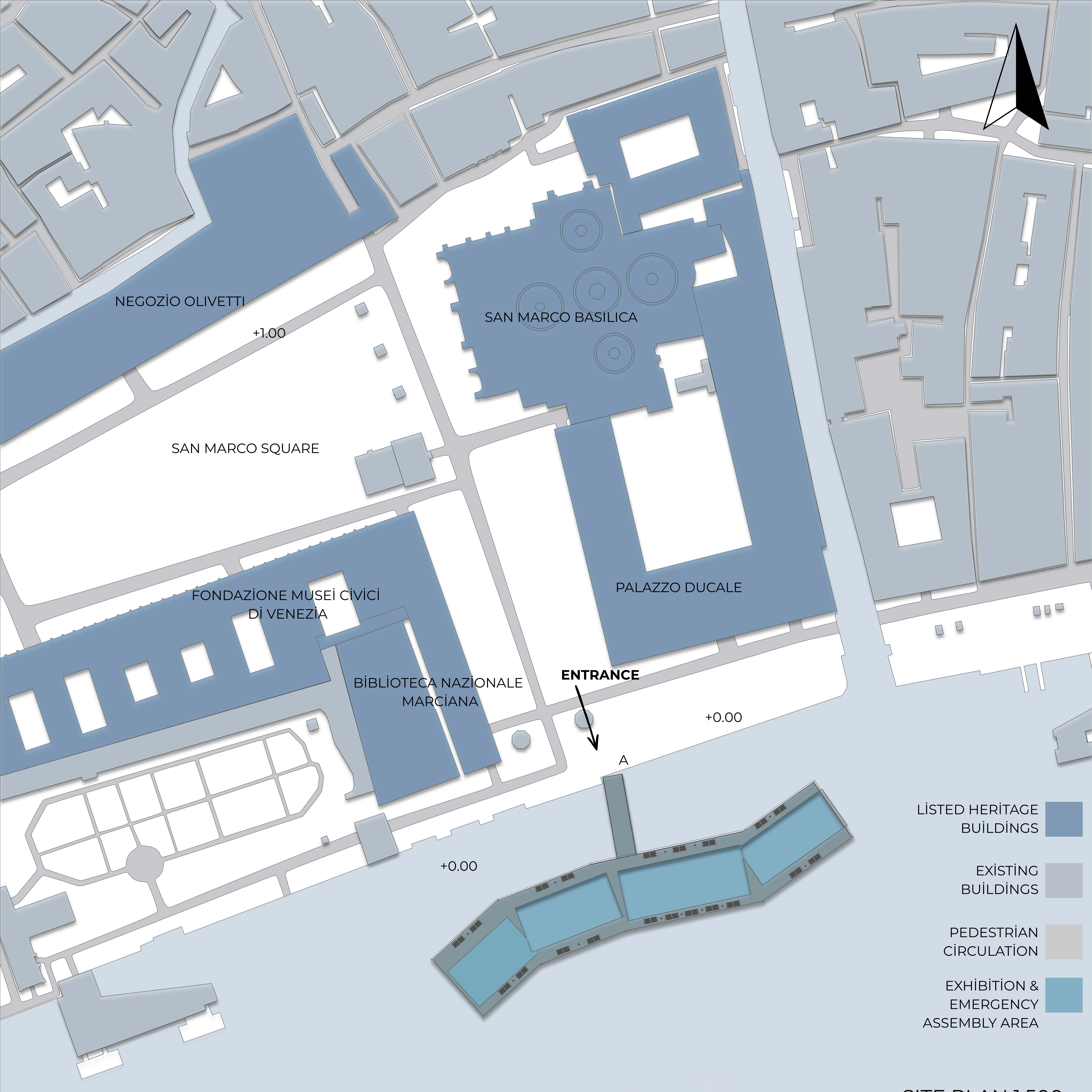


## CONCEPT



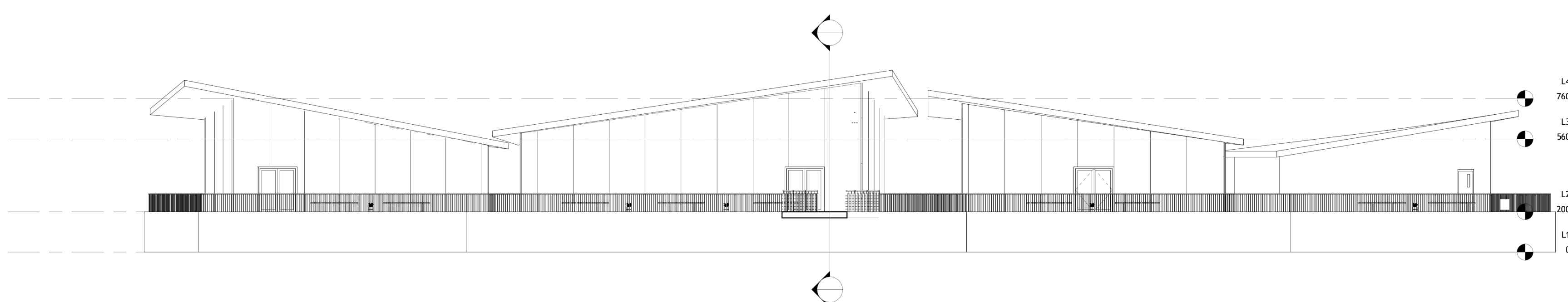
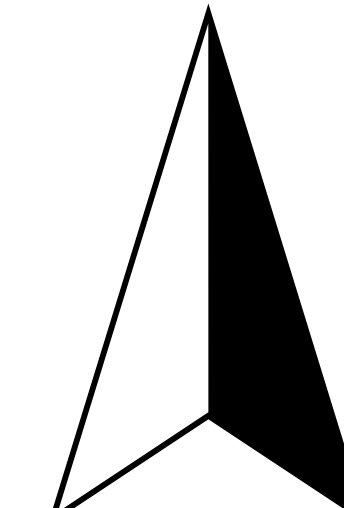
“More than a building, a living infrastructure that adapts, connects and protects.”



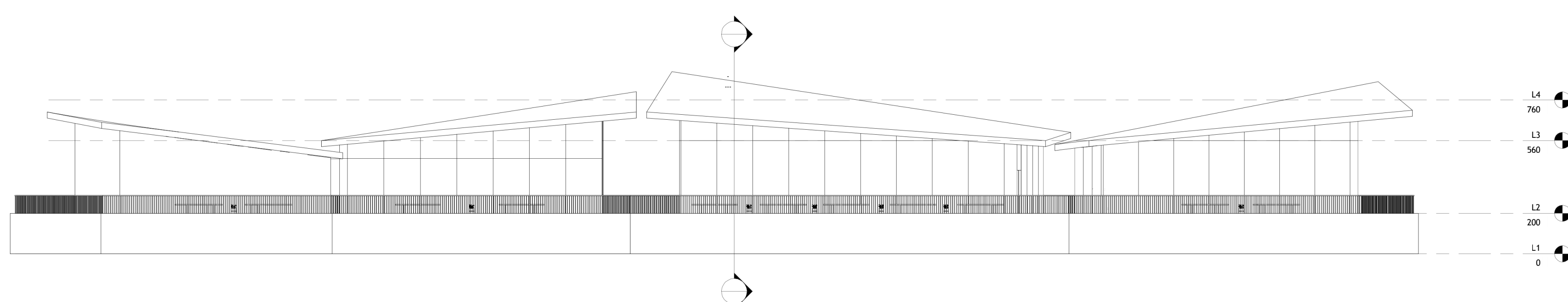


SITE PLAN 1:500

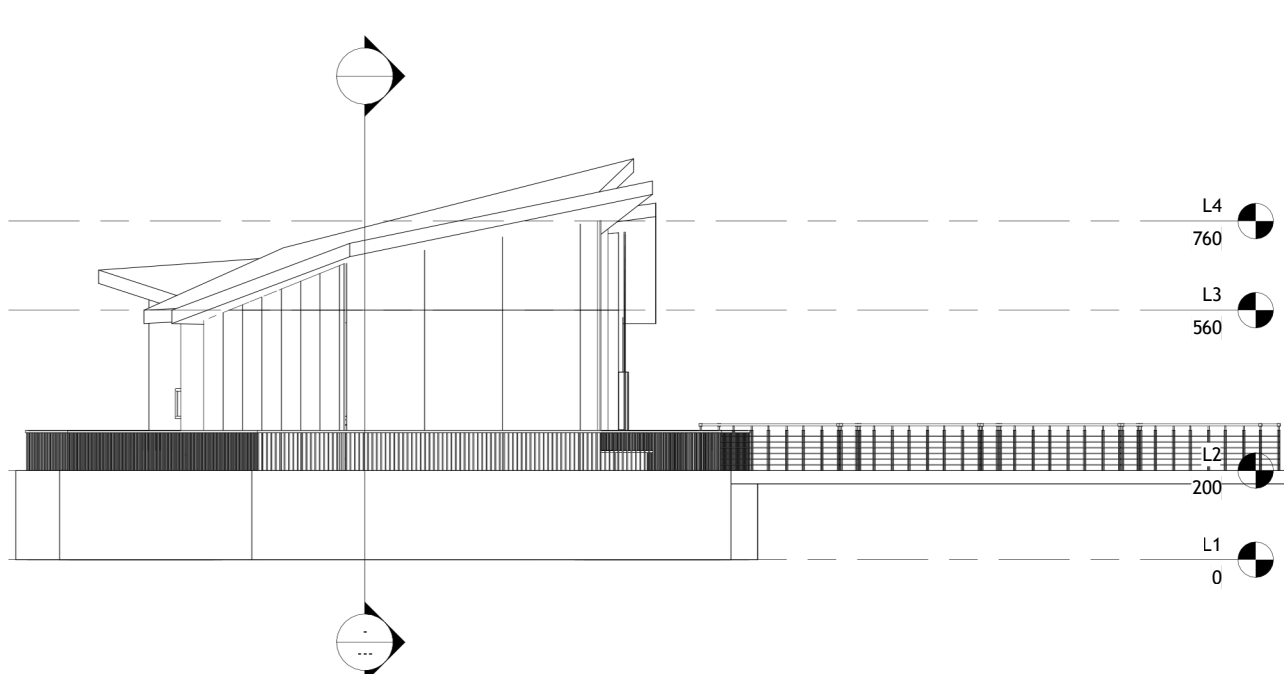




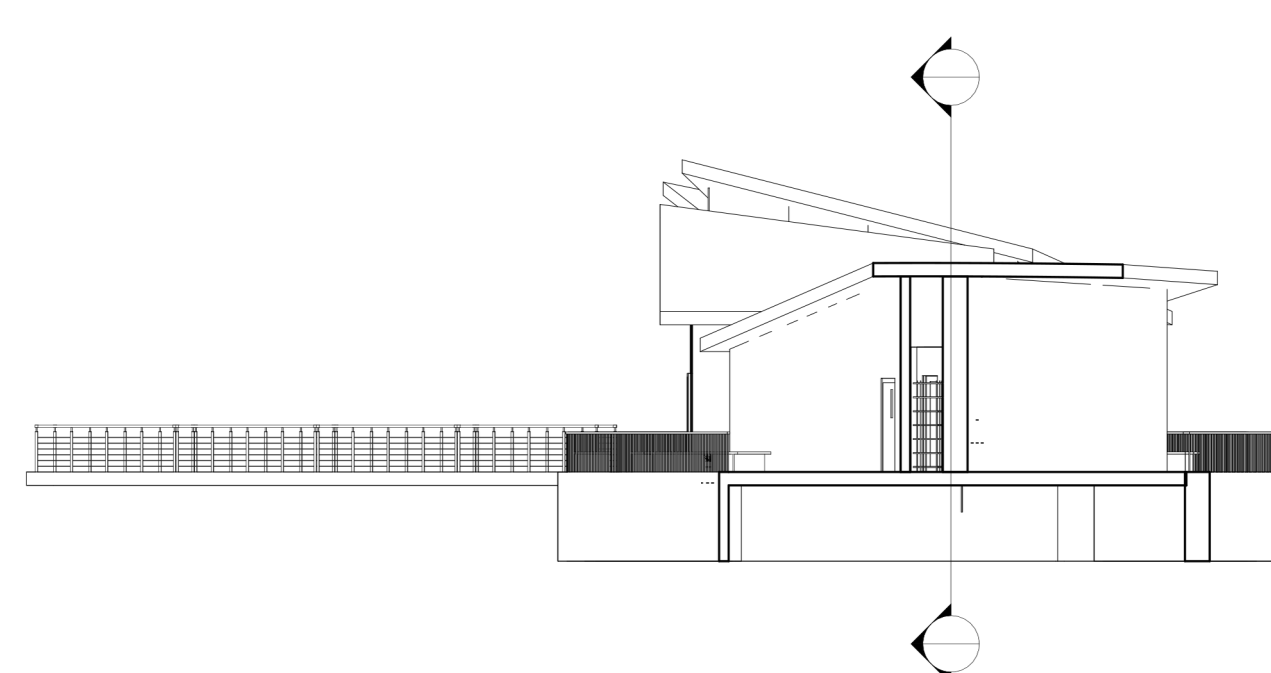
NORTH ELEVATION 1/100



SOUTH ELEVATION 1/100



WEST ELEVATION 1/100



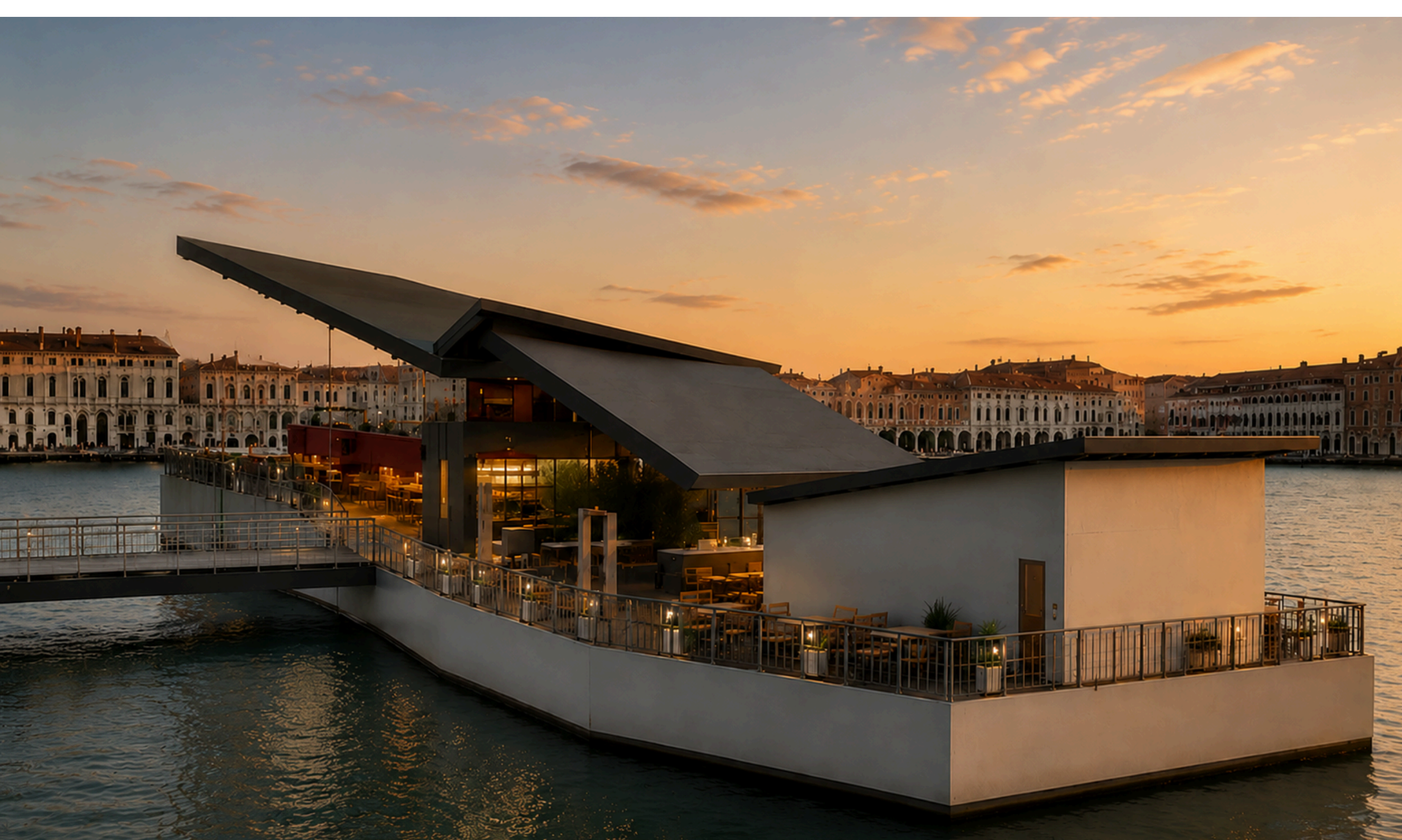
EAST ELEVATION 1/100



SOUTH ELEVATION



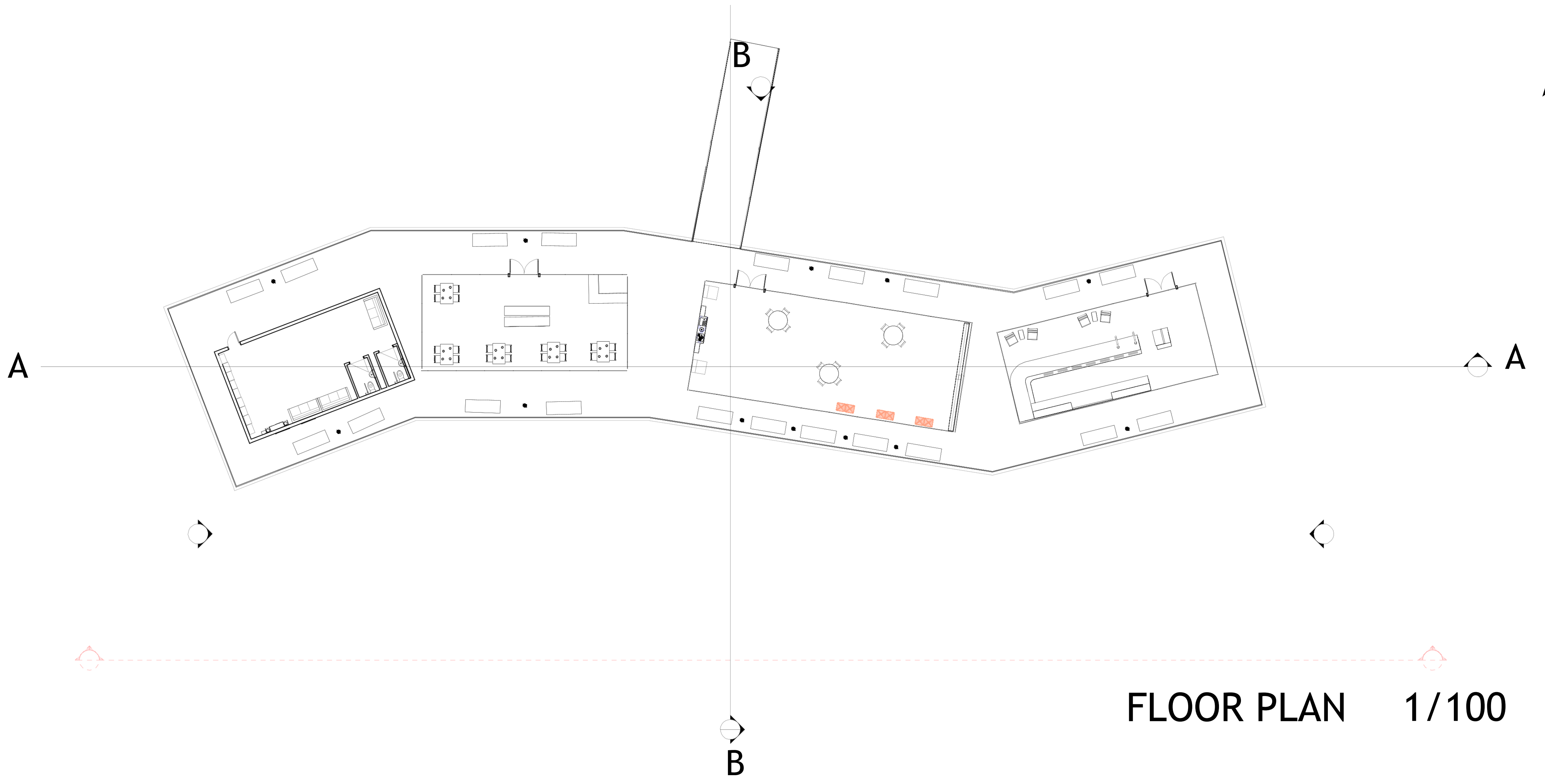
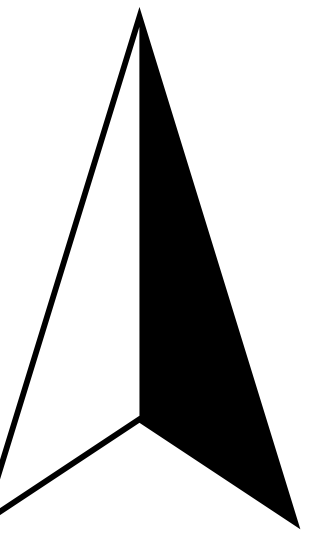
NORTH ELEVATION



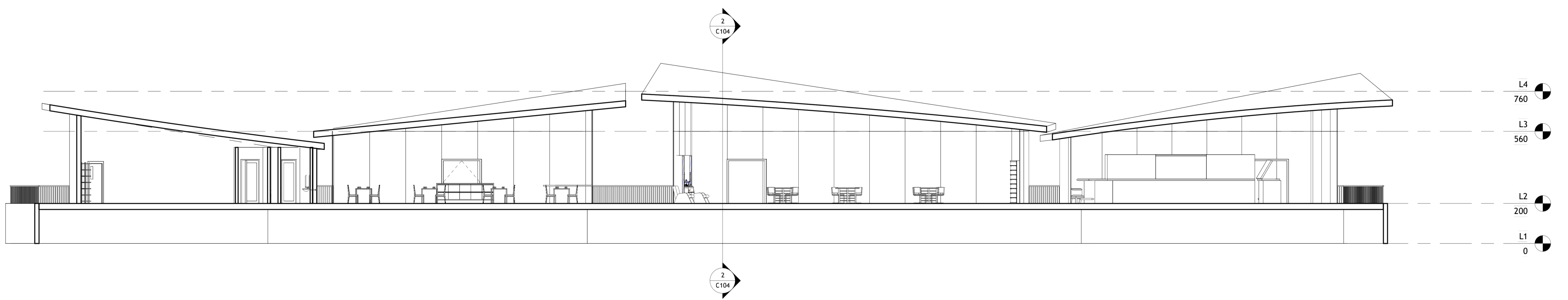
EAST ELEVATION



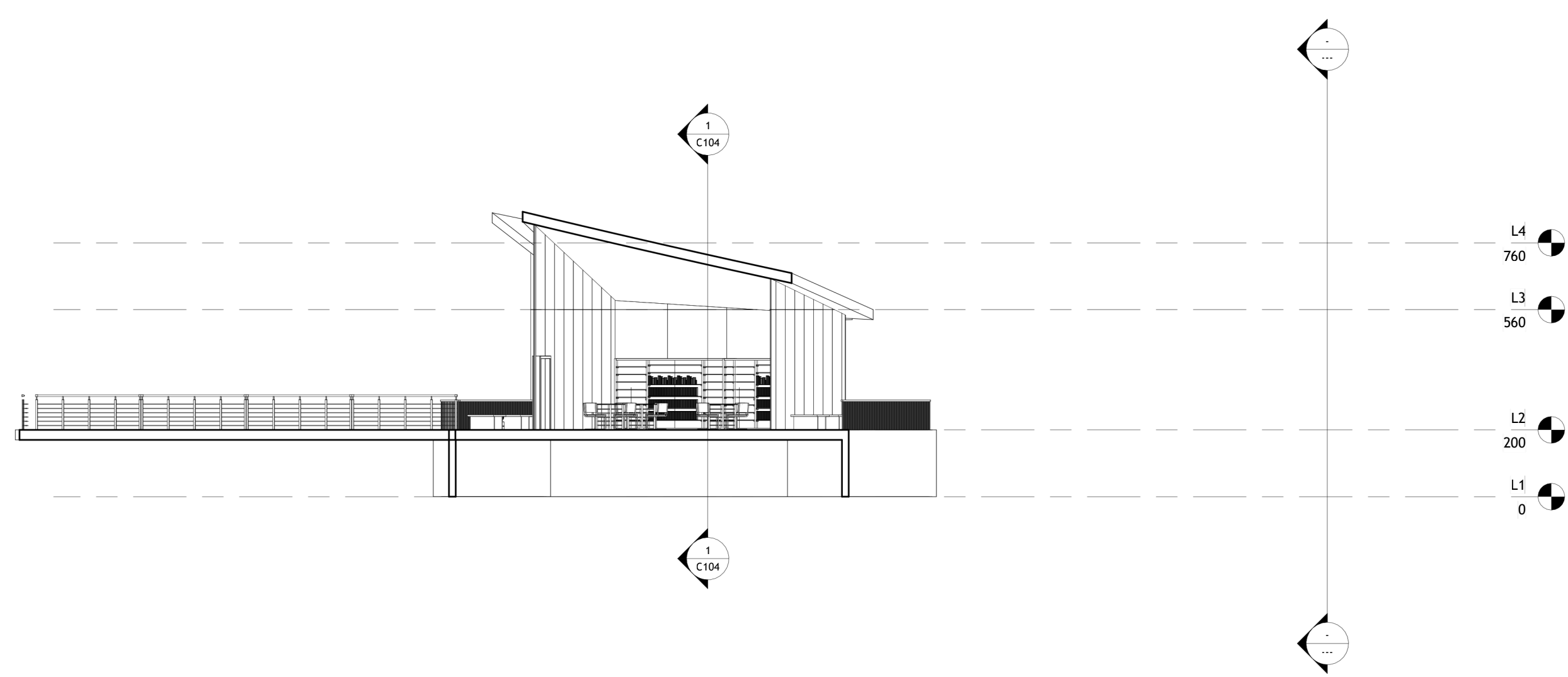
SOUTH ELEVATION



FLOOR PLAN 1/100



SECTION A-A



SECTION B-B

