



**MIXED USE BUILDING**



# MONOLITH AHAW

UNIVERSIDAD MARIANO GÁLVEZ DE GUATEMALA  
FACULTY OF ARCHITECTURE.  
CENTRAL CAMPUS  
ARCHITECTURAL DESIGN VIII  
SECTION 2  
ARQ. JUAN CÉSAR URETA



SALVADOR FERNANDO PADILLA MEDINA 680-22-5545  
LAURA SOFÍA MORAGA FARFÁN 680-19-5919



[EXTERIOR VIRTUAL TOUR](#)

[INTERIOR VIRTUAL TOUR](#)

[FLOOR PLANS](#)



## MONOLITH AHAW

The name arises from the fusion of two concepts: *Monolith*, which evokes the Maya monolithic architecture as a symbol of solidity and permanence, and *Ahaw*, a Mayan term representing authority and hierarchy.

The use of English provides an international projection, aligned with a contemporary reinterpretation of Georgian architecture. The project revisits its principles of order, proportion, and composition, adapting them to a contemporary architectural language.

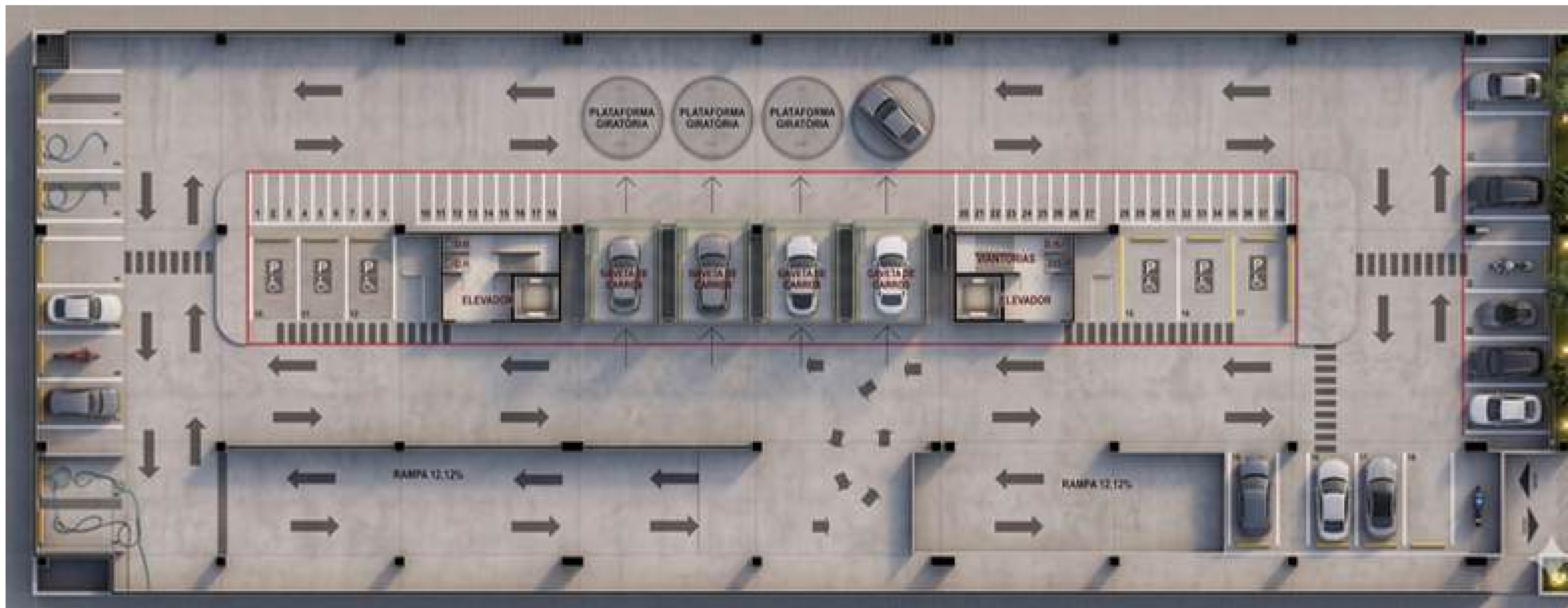
As a result, it establishes a balance between local identity and global vision, integrating the monumentality of Mayan heritage with the clarity and elegance of the Georgian tradition.



*MONOLITH AHAW* is a mixed-use building conceived as an urban landmark that combines solidity, elegance, and international projection. Its design integrates commercial spaces, services, and residential areas into a functional, high-quality proposal aimed at attracting investment and activating its surrounding context. Located within the urban commercial and financial area of Zone 10, Guatemala City.

With a bold and contemporary architectural identity, the project offers added value, identity, and exclusivity, positioning itself as a benchmark that enhances the value of the area and delivers an integrated experience for both users and visitors.

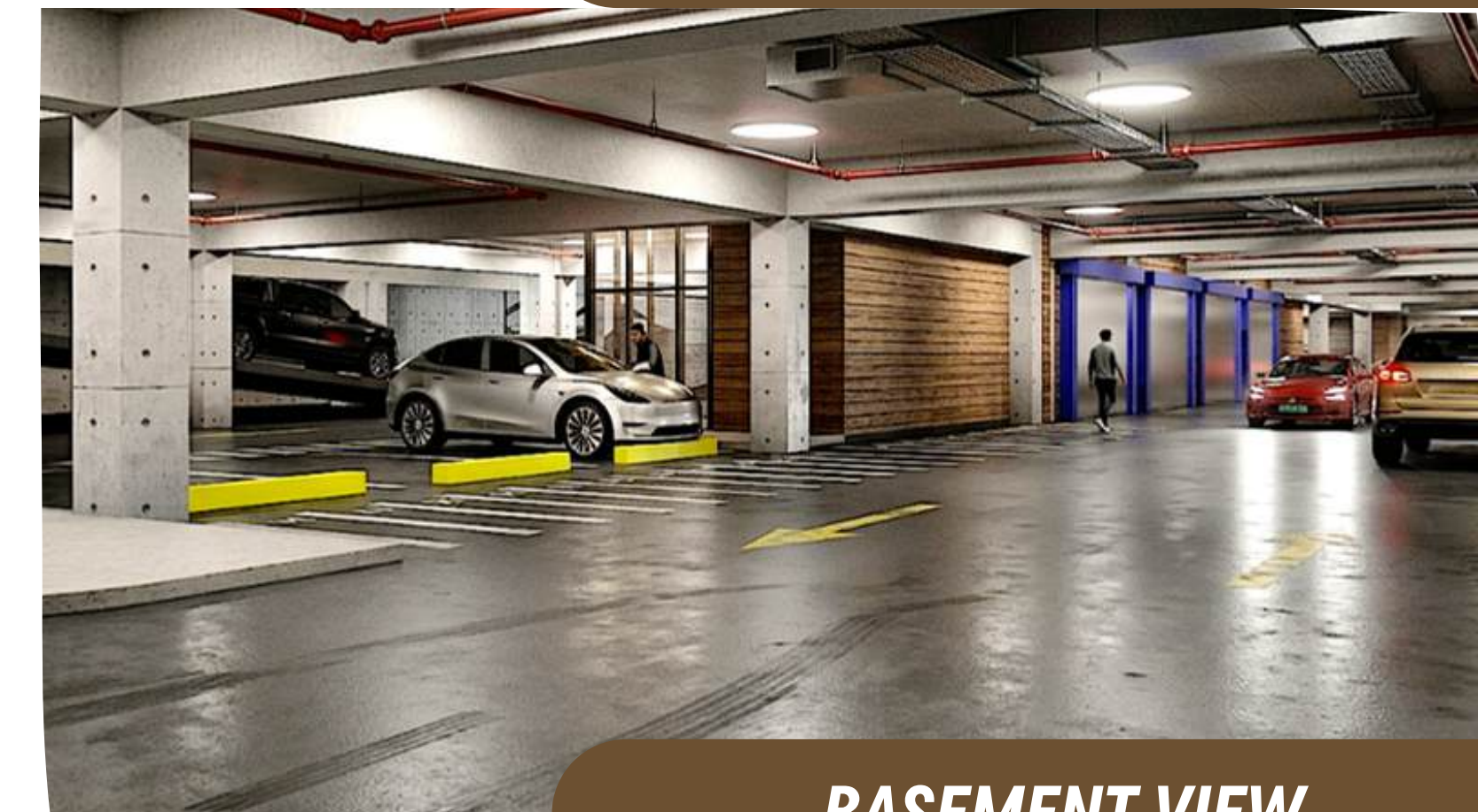




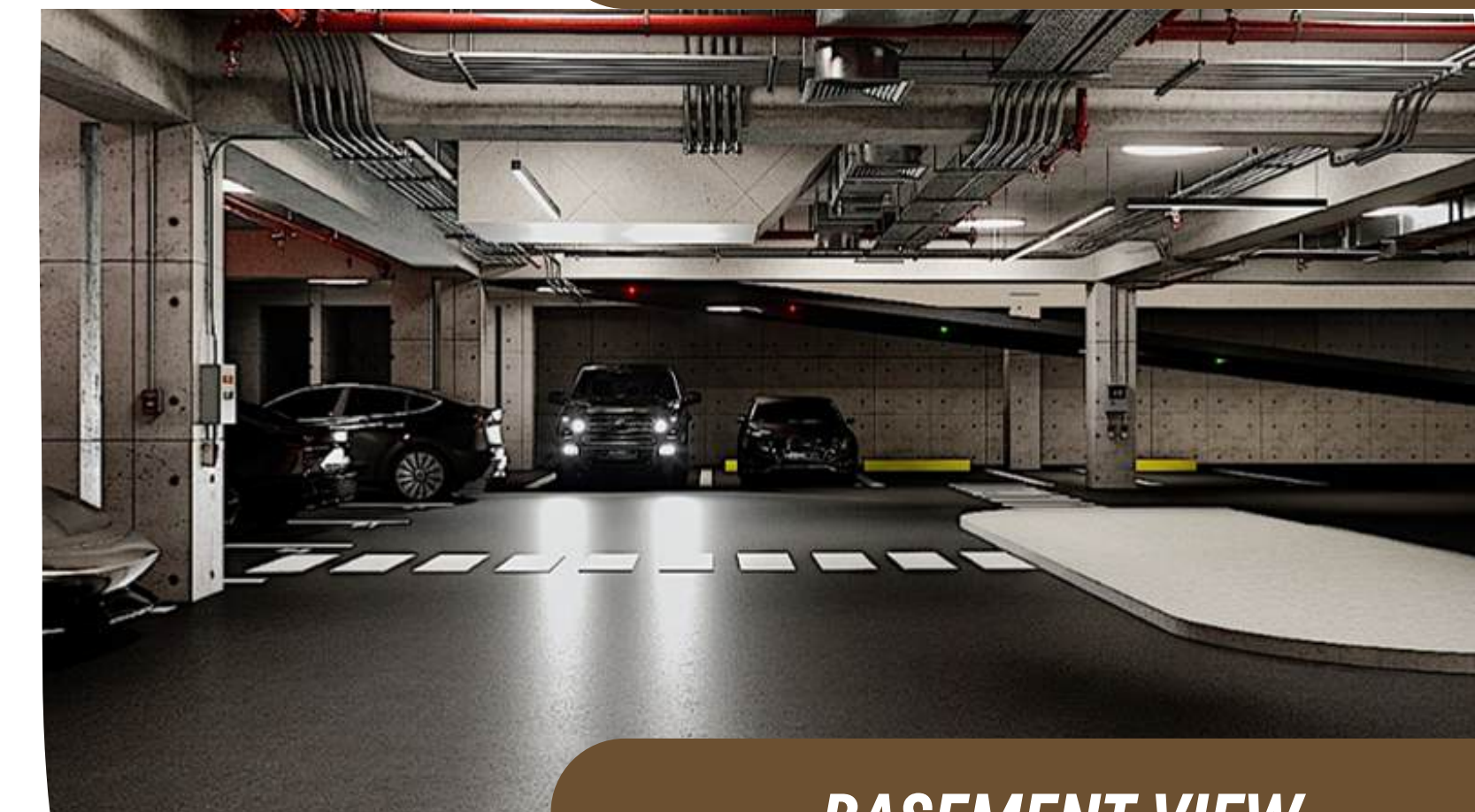
**PBASEMENT FLOOR PLAN, TRADITIONAL PARKING**



**BASEMENT VIEW**



**BASEMENT VIEW**



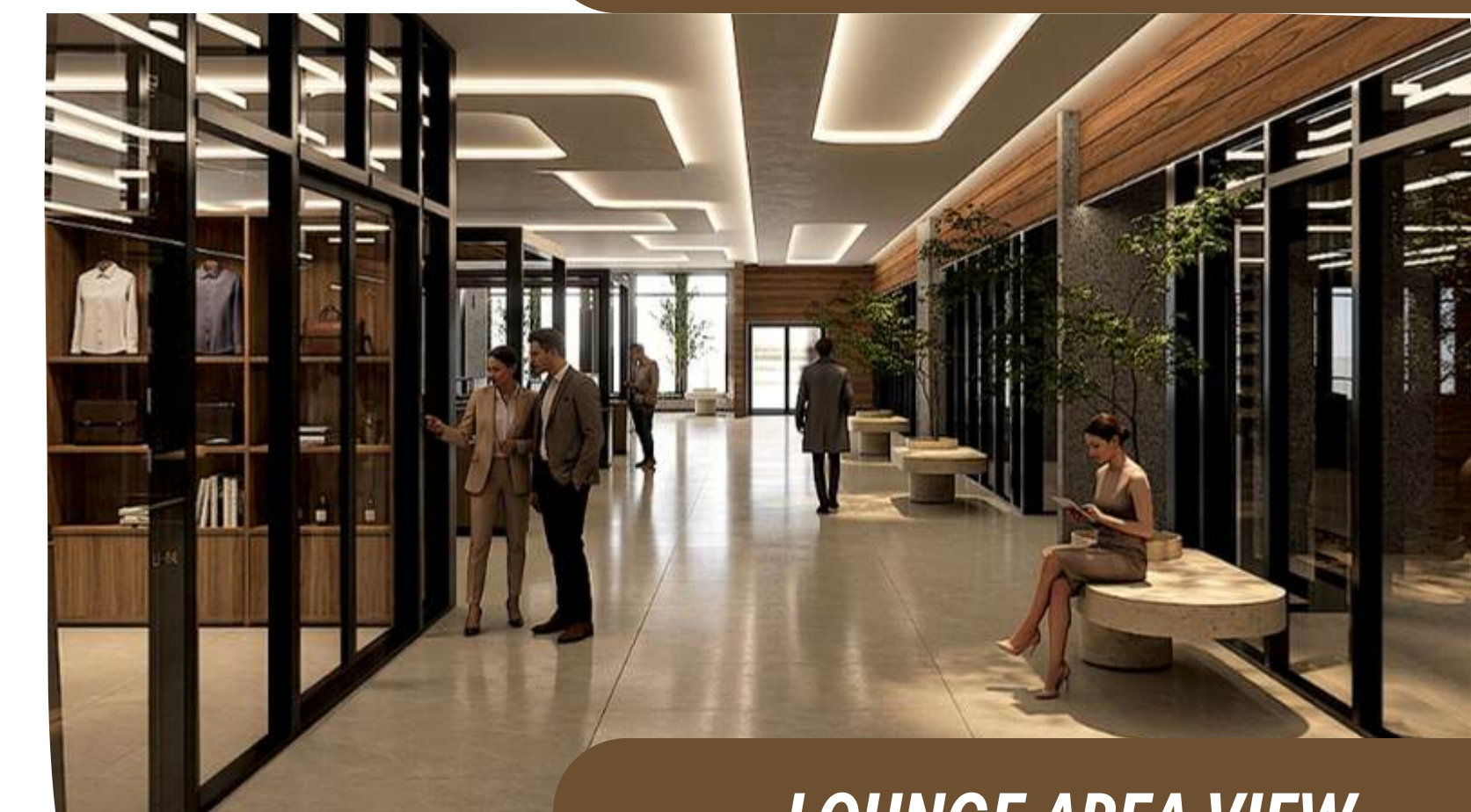
**BASEMENT VIEW**



**LEVEL 1 - COMMERCIAL FLOOR PLAN**



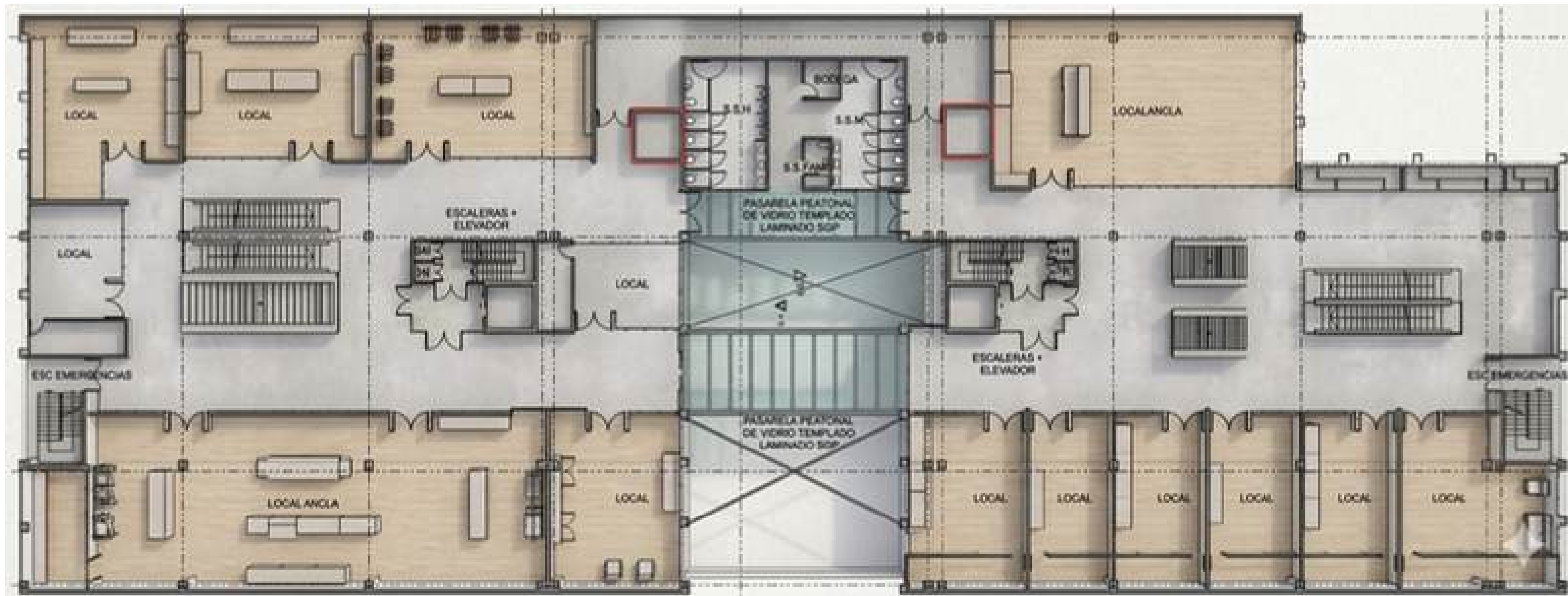
**WALKWAY VIEW**



**LOUNGE AREA VIEW**



**KIOSK DESIGN**



**LEVEL 2- COMMERCIAL FLOOR PLAN**



**CORRIDOR**



**CORRIDOR**



**COURTYARD**



**FOOD COURT**



**LEVEL 3- COMMERCIAL FLOOR PLAN**

*The third floor is divided between the commercial area and the office spaces. It is separated by a pedestrian walkway.*



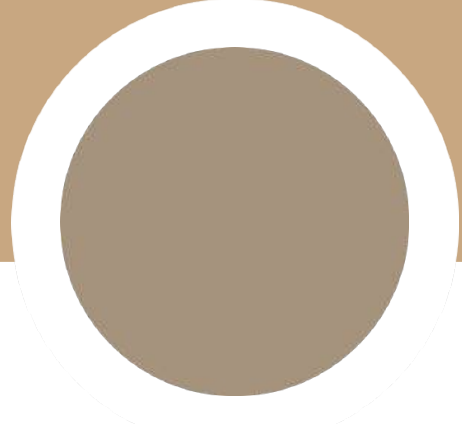
**FOODCOURT**



**BANK BRANCH**



**QUICK SERVICE RESTAURANT**



**POOL DECK**



**POOL DECK**



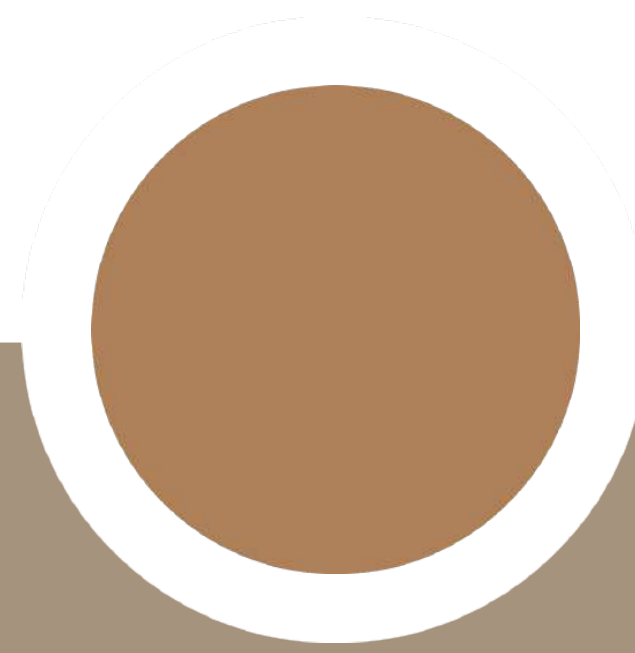
**GYM**



**GAME ROOM**



**LEVEL 4 - AMENITIES FLOOR PLAN**





**LEVEL 5- APARTHOTEL LOBBY FLOOR PLAN**



**WALKWAY**



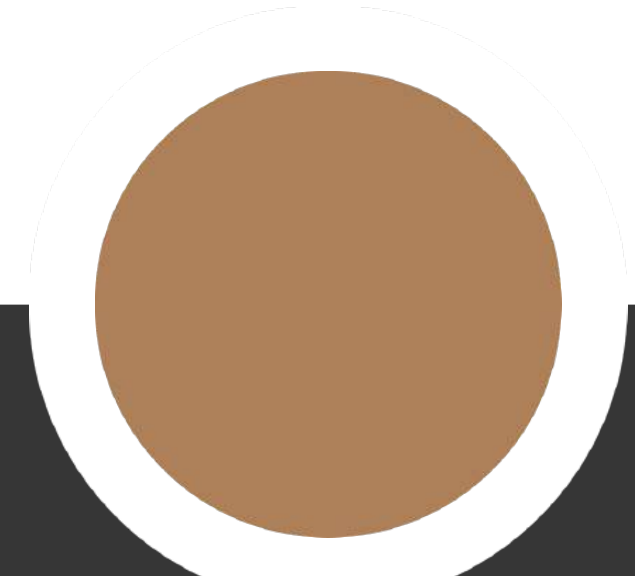
**APARTHOTEL CORRIDOR**



**APARTHOTEL CORRIDOR**



**LEVEL 5- OFFICE BUILDING**





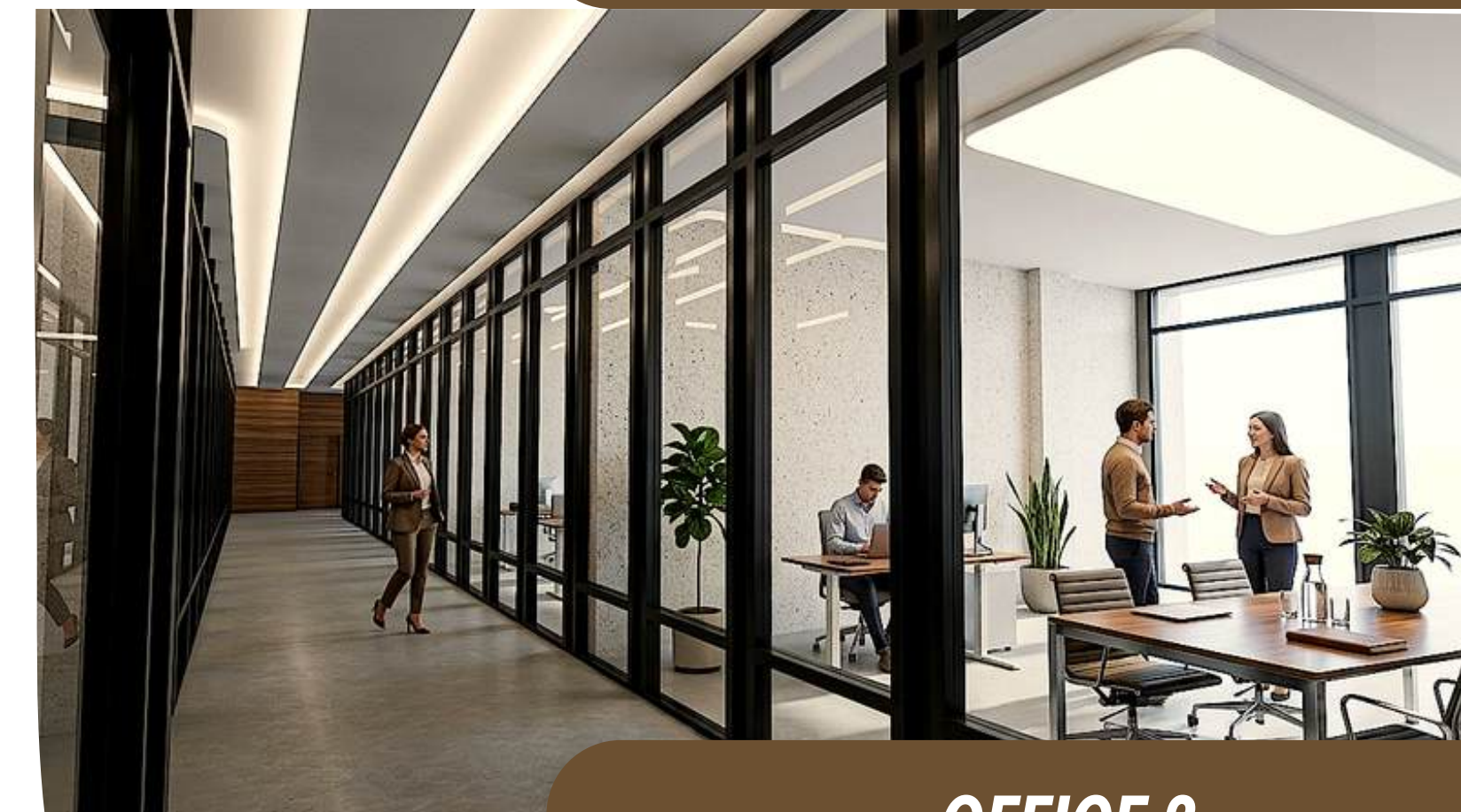
**APARTHOTEL SERVICES**



**LEVEL 6- OFFICE FLOOR PLAN**



**OFFICE 1**



**OFFICE 2**



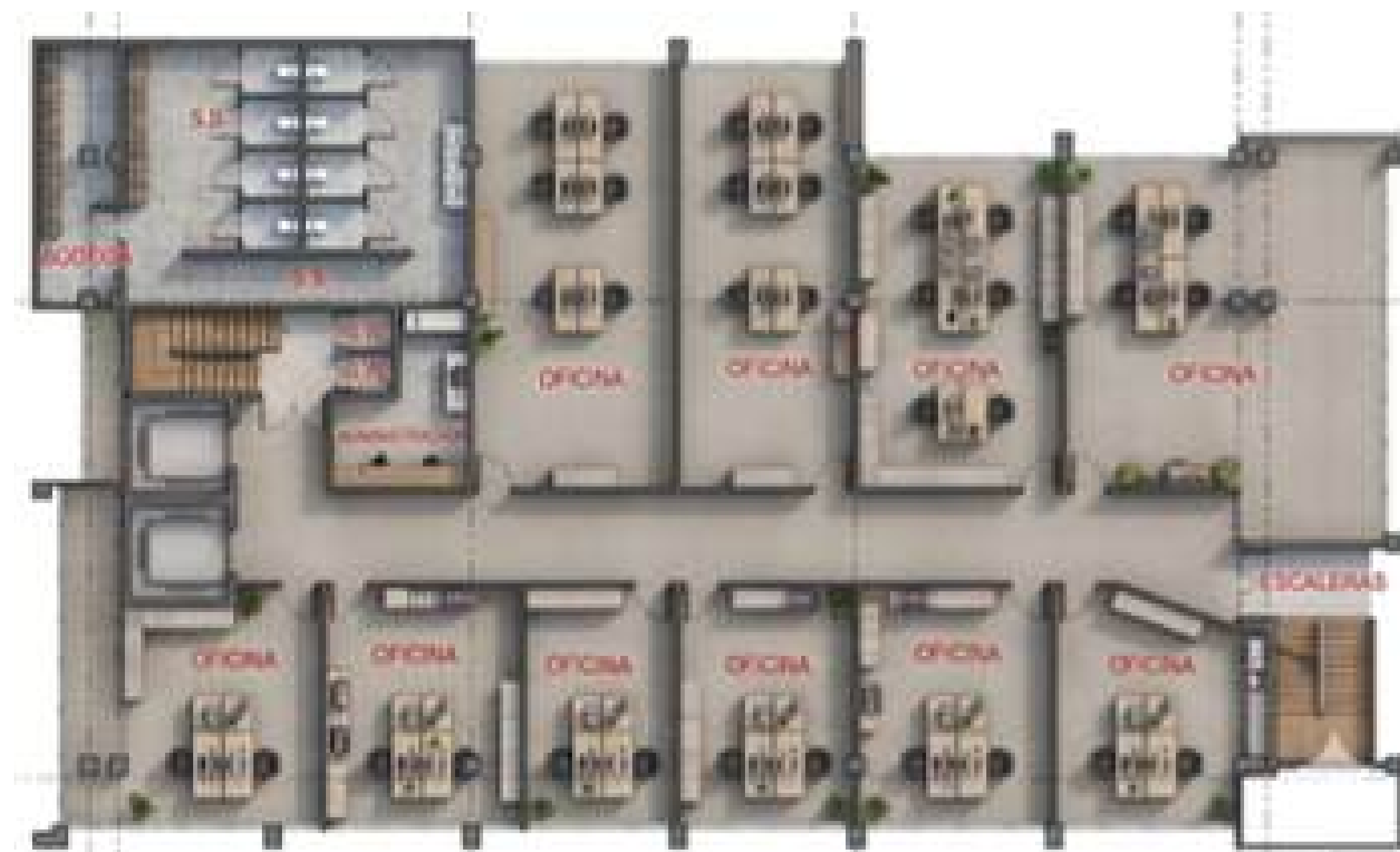
**OFFICE CORRIDOR**



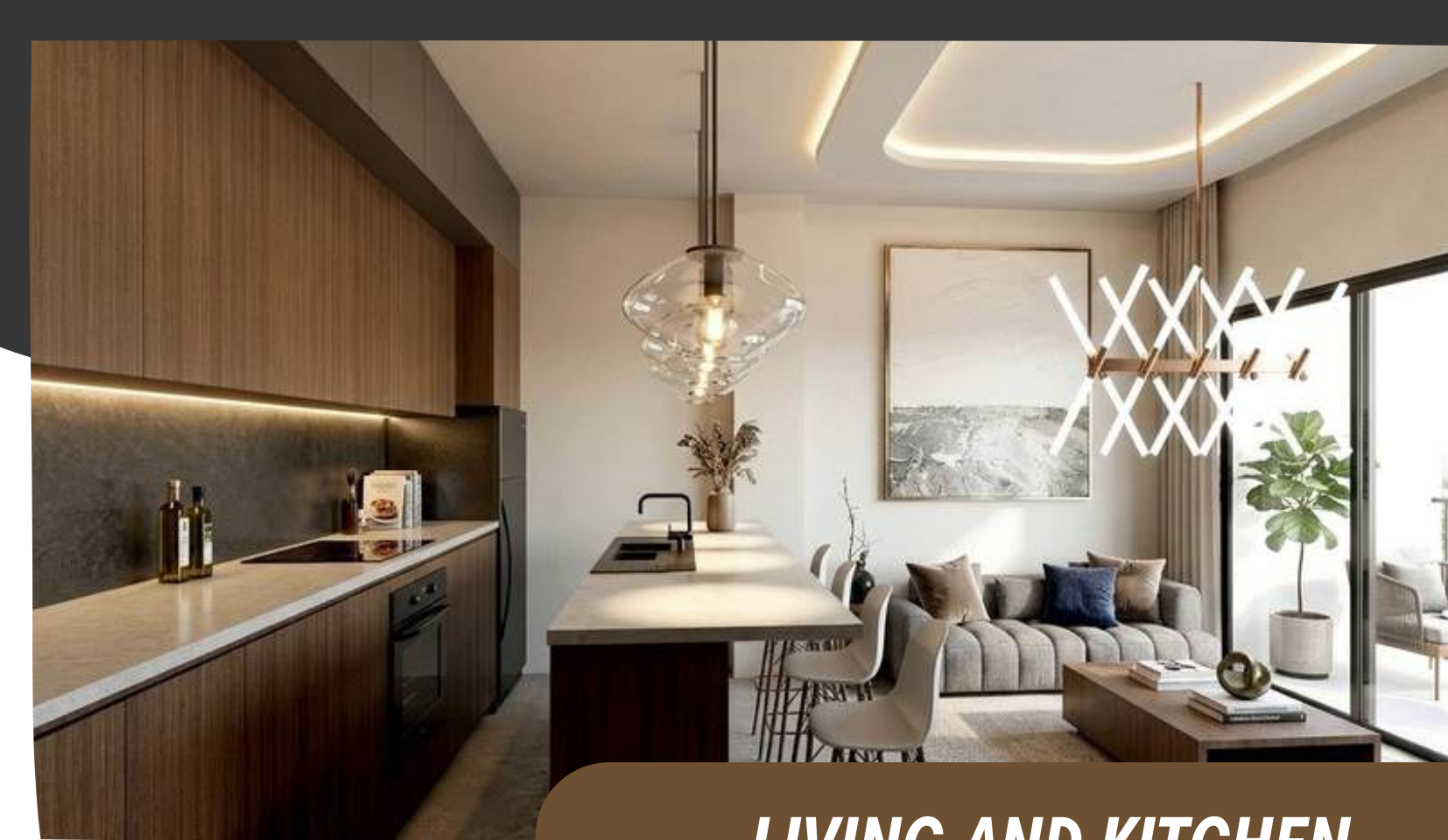
**OFFICE CORRIDOR**



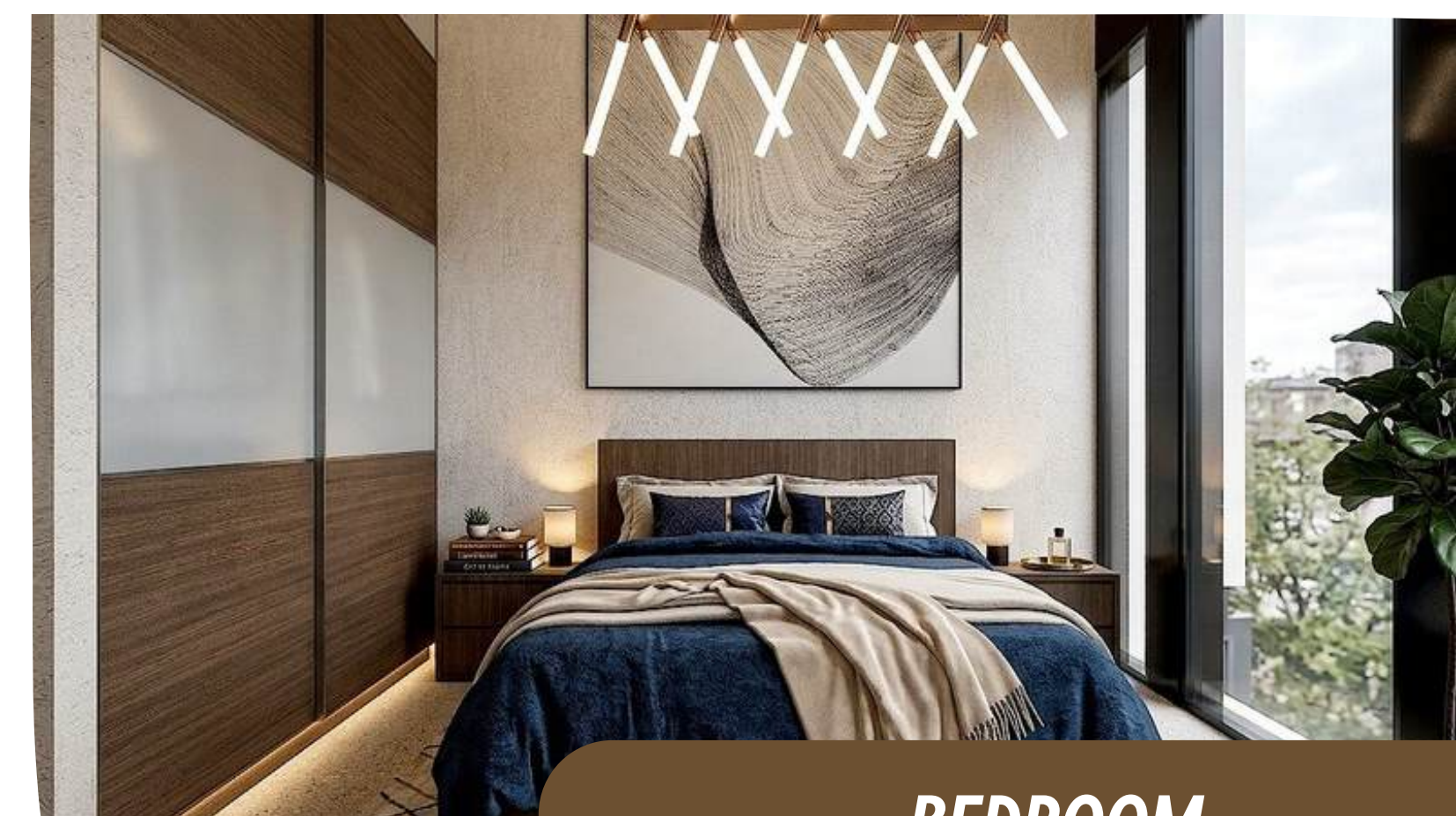
**LEVEL 7 - APARTHOTEL FLOOR PLAN**



**LEVEL 7 - OFFICE FLOOR PLAN**



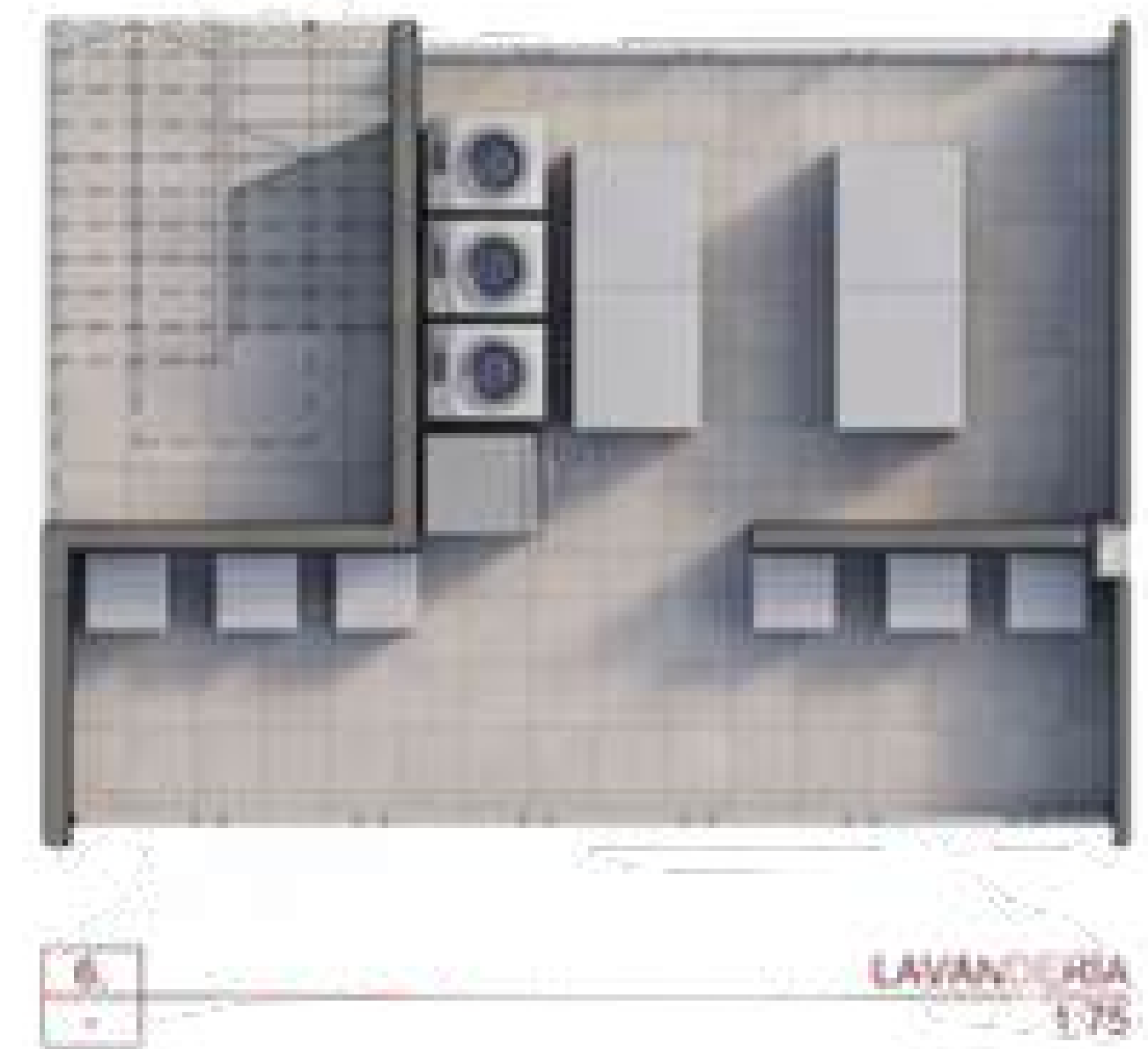
**LIVING AND KITCHEN**



**BEDROOM**



**BALCONY**



**TYPICAL APARTHOTEL FLOOR PLANS**



**LEVEL 8 - APARTHOTEL FLOOR PLAN**



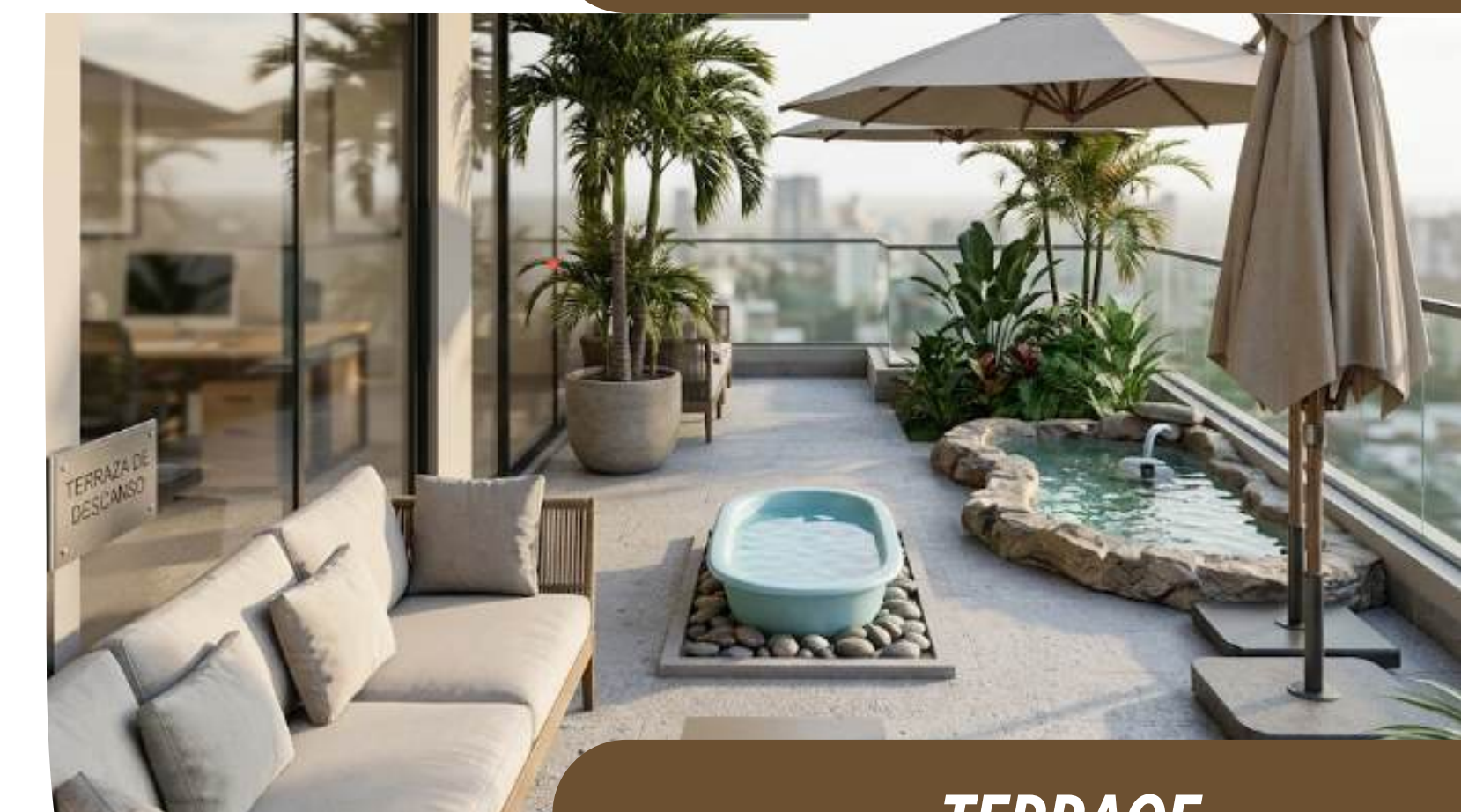
**LEVEL 8 - OFFICE FLOOR PLAN**



**LOBBY**



**RESTAURANT**



**TERRACE**



**LAUNDRY**



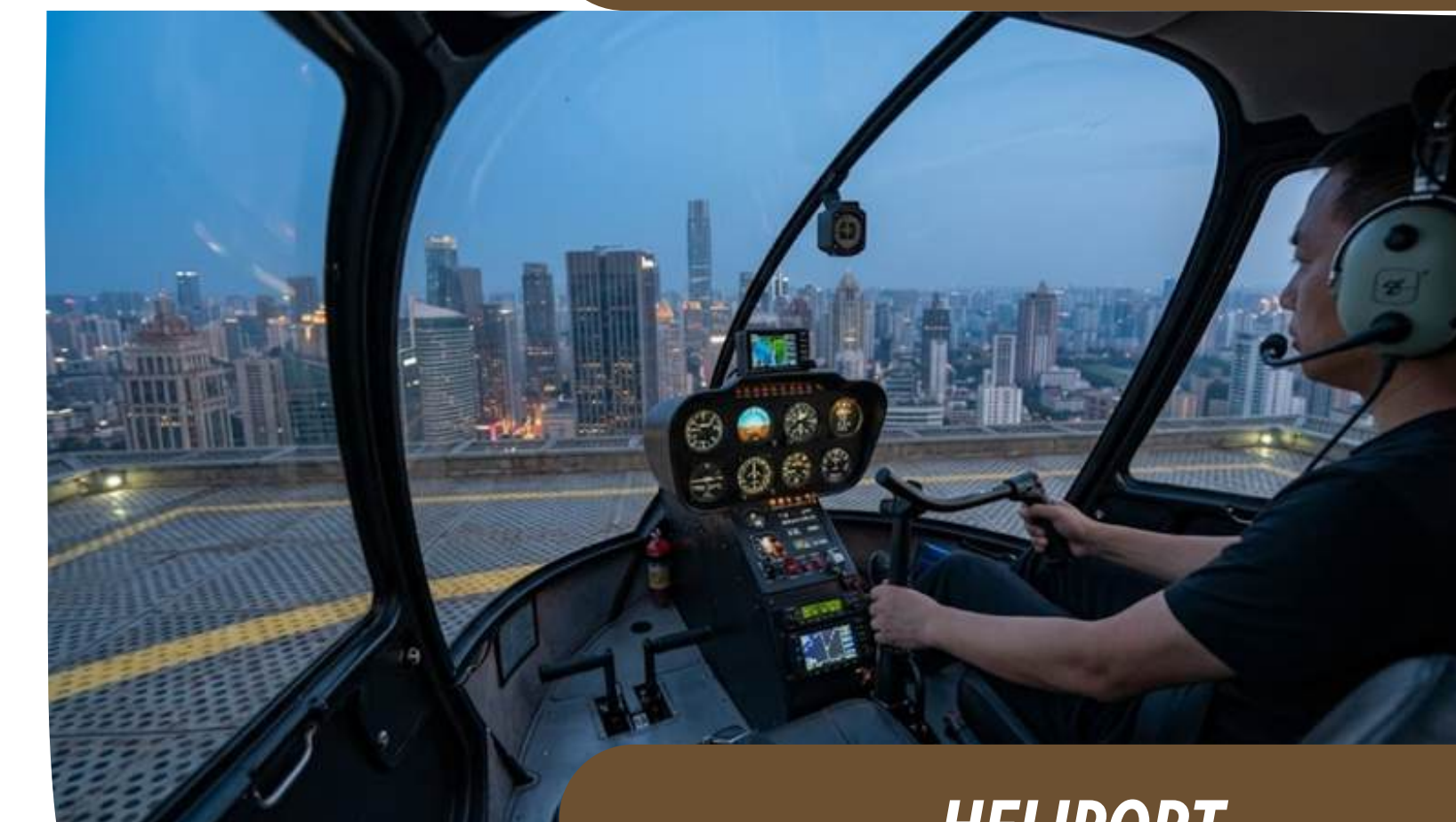
**TYPICAL APARTHOTEL FLOOR PLANS**



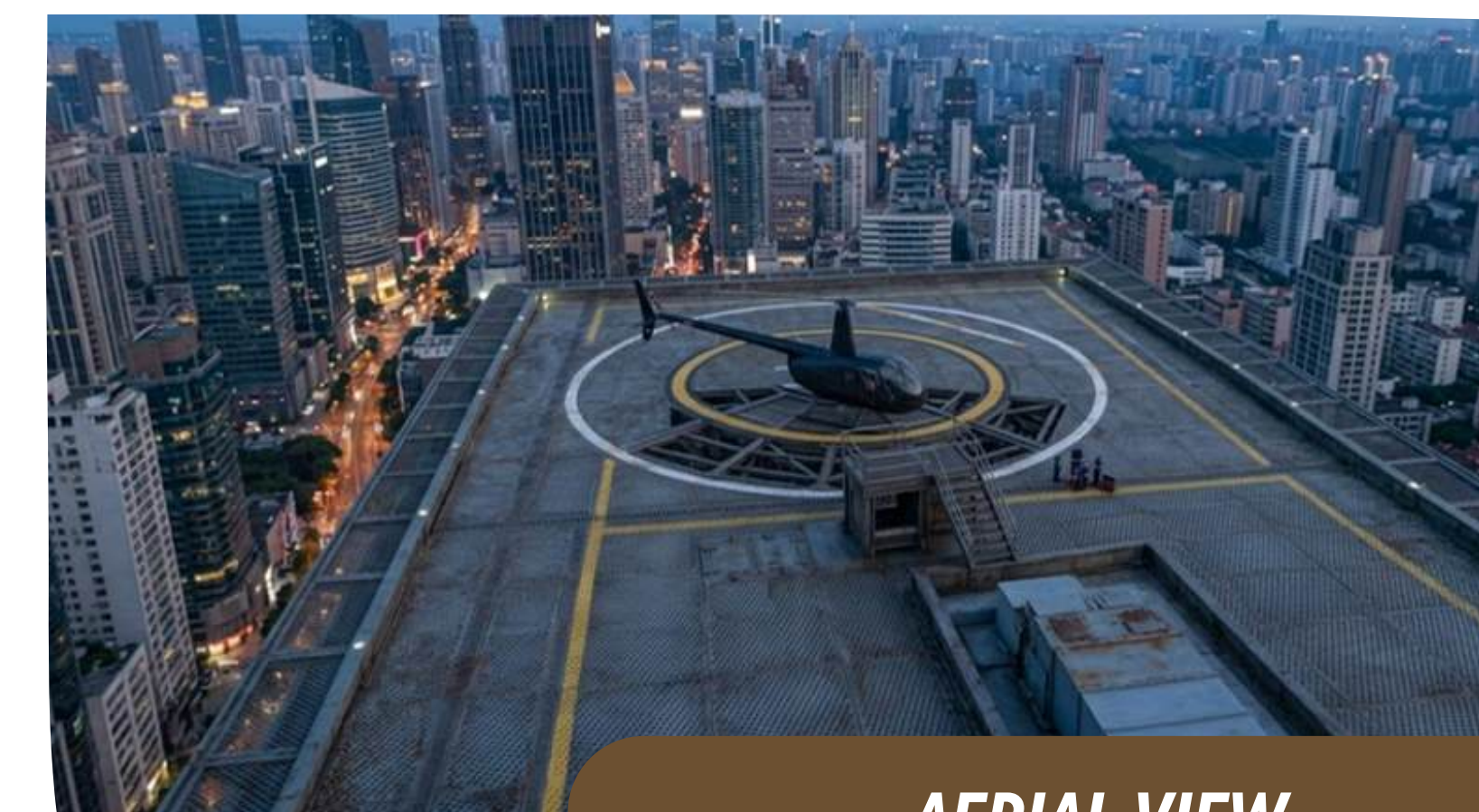
**HELIPORT PLAN**



**HELIPORT**



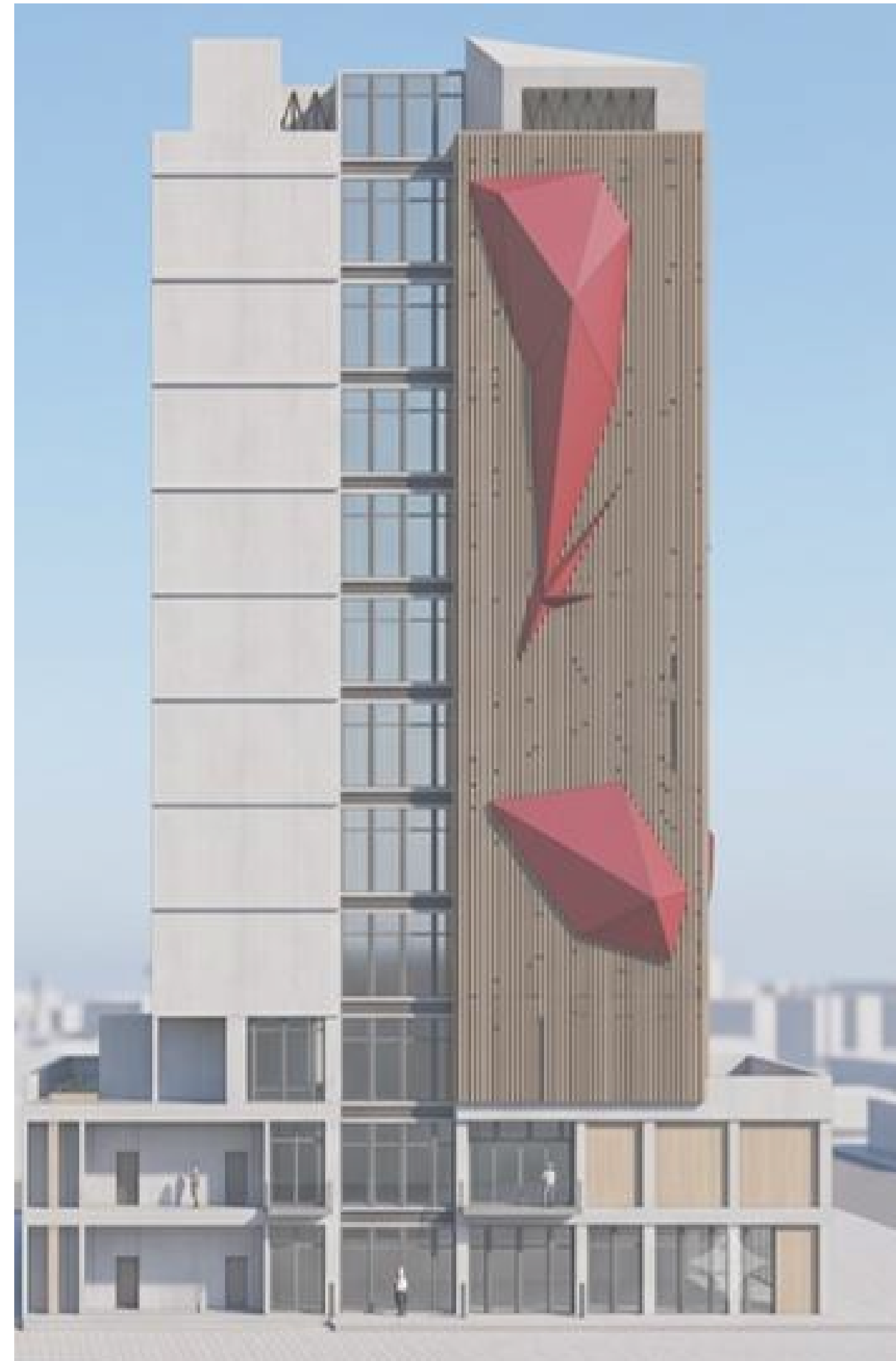
**HELIPORT**



**AERIAL VIEW**



**FRONTAL ELEVATION OFFICE BUILDING**



**REAR ELEVATION OFFICE BUILDING**



**FRONTAL FACADE**



**BASEMENT ENTRANCE**



**FRONTAL FACADE**



**FRONTAL FACADE**



**FRONTAL ELEVATION APARTHOTEL BUILDING**



**REAR ELEVATION APARTHOTEL BUILDING**



**FRONTAL FACADE**



**REAR FACADE**



**REAR FACADE**



**SIDE FACADE**



**LONGITUDINAL SECTION**



**LONGITUDINAL SECTION**





**CROSS SECTION**



**CROSS SECTION**

