



ALMARE BEACH RESORT

DESIGN INSPIRATION

Inspired by coastal Mediterranean living, the design emphasizes openness, natural materials, and a relaxed seaside atmosphere. Soft neutral tones combined with warm wood textures create a calming and inviting hospitality space.

ROOM DESCRIPTION

A compact yet efficient 36.26 sqm layout balancing functionality and comfort. The space is designed to provide essential amenities while maintaining a spacious feel through optimized furniture placement and circulation.

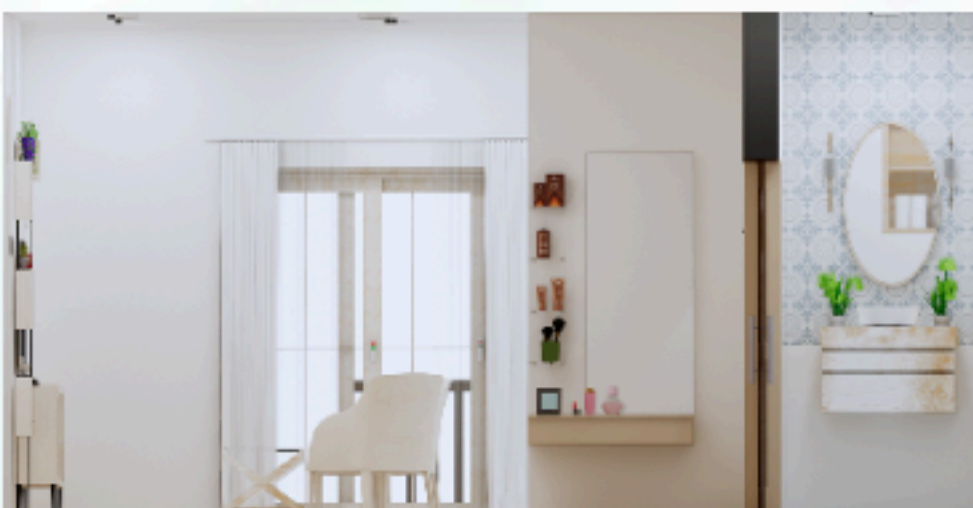
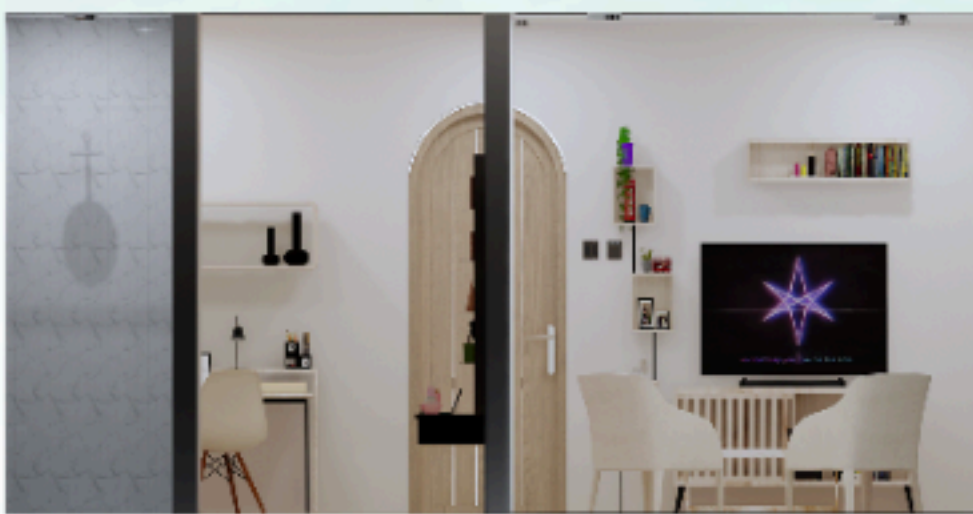
DESIGN FEATURES

- Natural ventilation strategy
- Use of local and sustainable materials
- Indoor outdoor visual connection
- Minimal yet functional furniture layout
- Warm and relaxing coastal ambiance

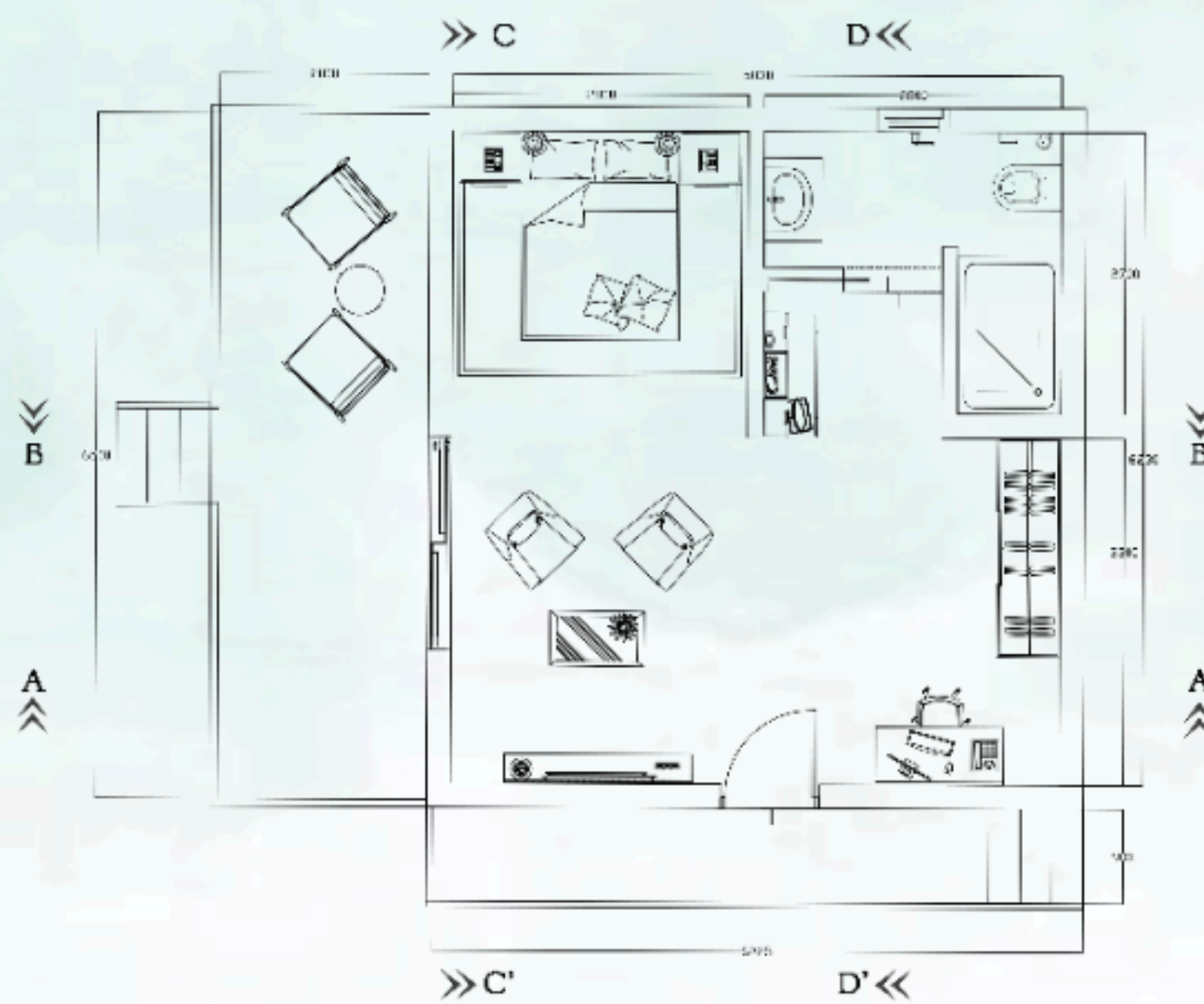
ROOM TYPE

Standard Room - Area: 36.26 SQ.M

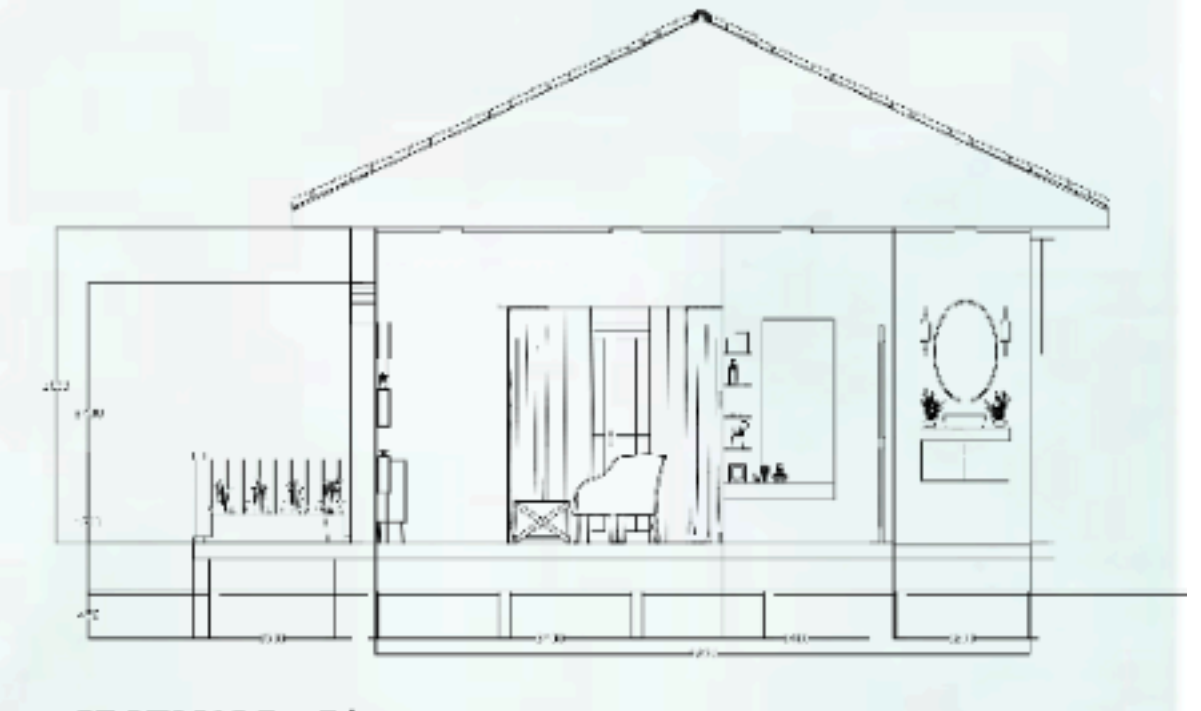
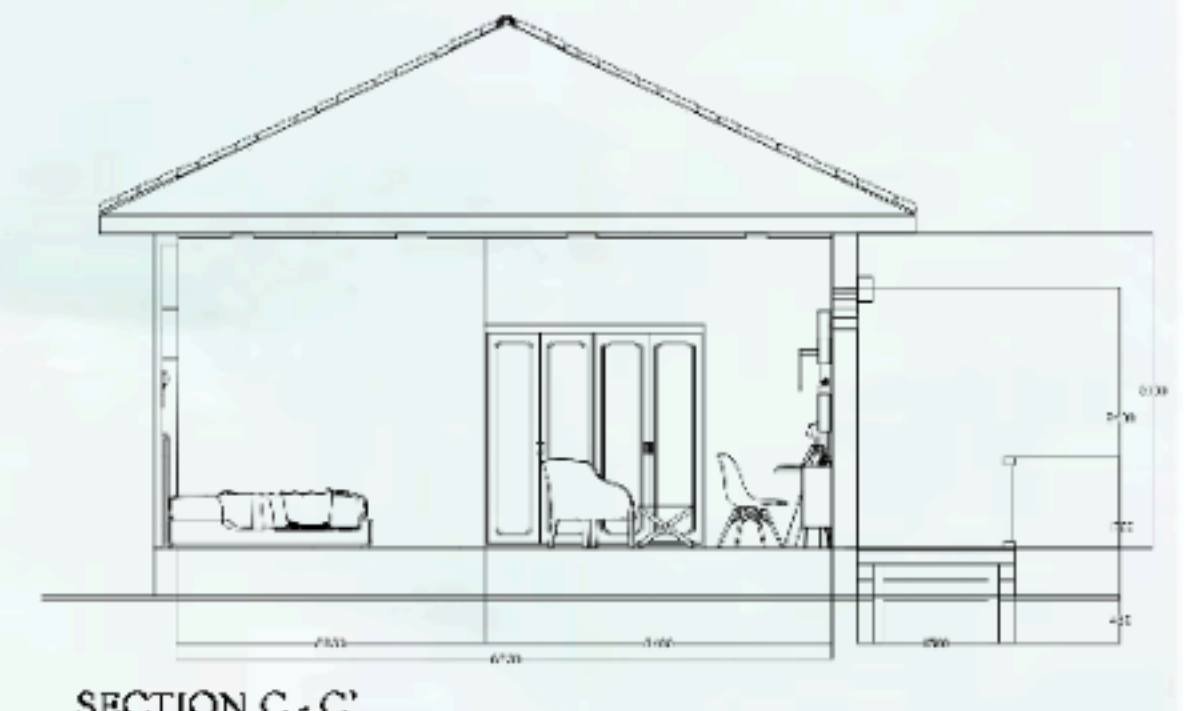
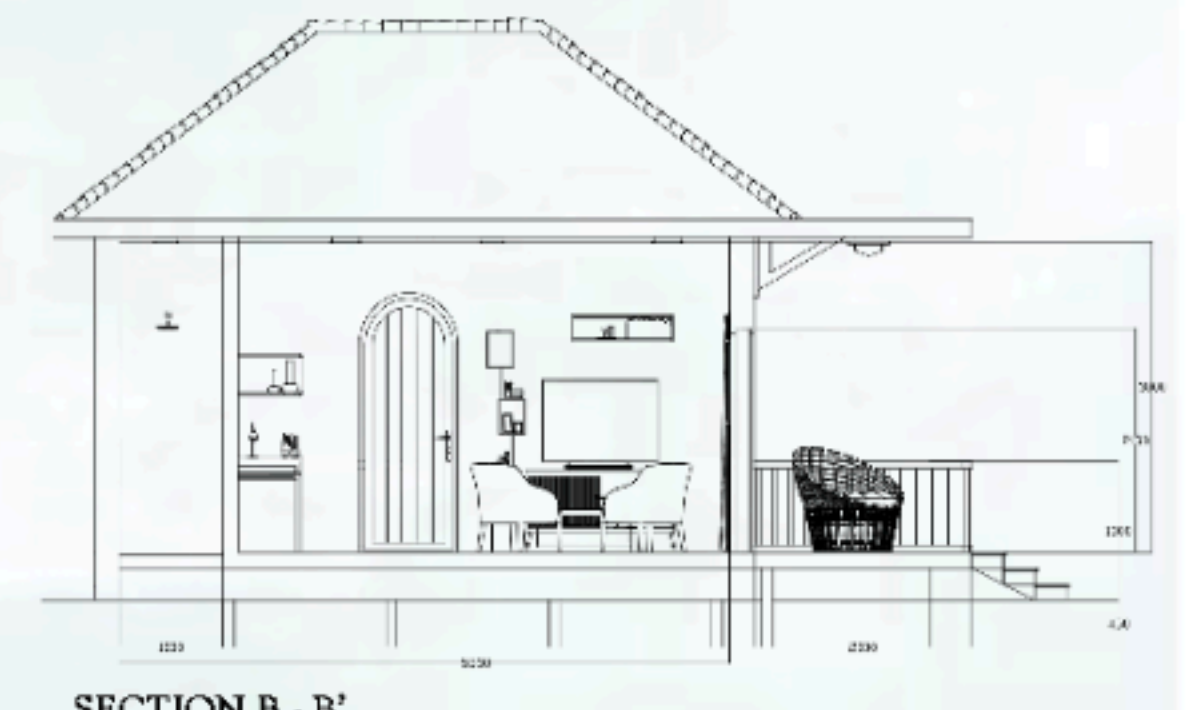
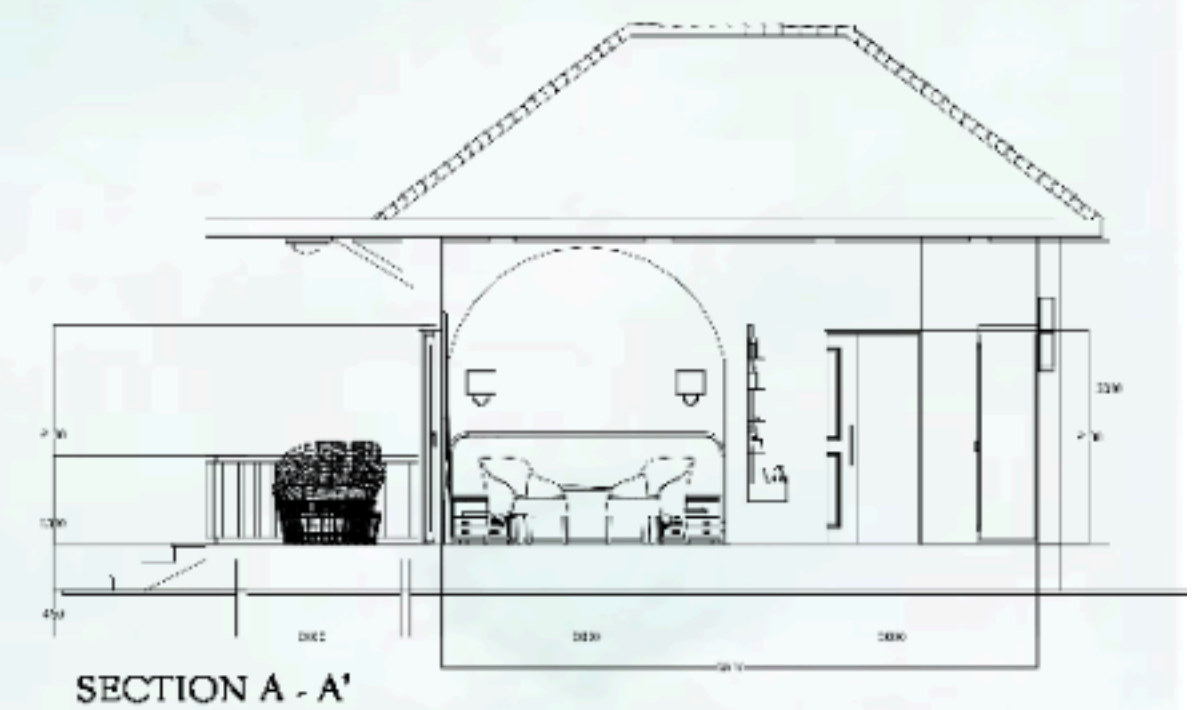
ELEVATIONS



FURNITURE LAYOUT PLAN



SECTIONS



TRAK WOOD
Flooring, Furniture

SHINGLES
Roofing

RATTAN
Decorations, Seating

ENGINEERED WOOD
Cabinets, Storage

TILE
Bathroom floor & walls

FABRIC
Upholstery, Furnishing

COLOR PALETTE

- Sand Beige #E6D3B3
- Ocean Blue #5B8FA8
- Teak Brown #8B5A2B
- Off White #F5F5F0
- Muted Gray #7A7A7A



ALMARE

BEACH RESORT

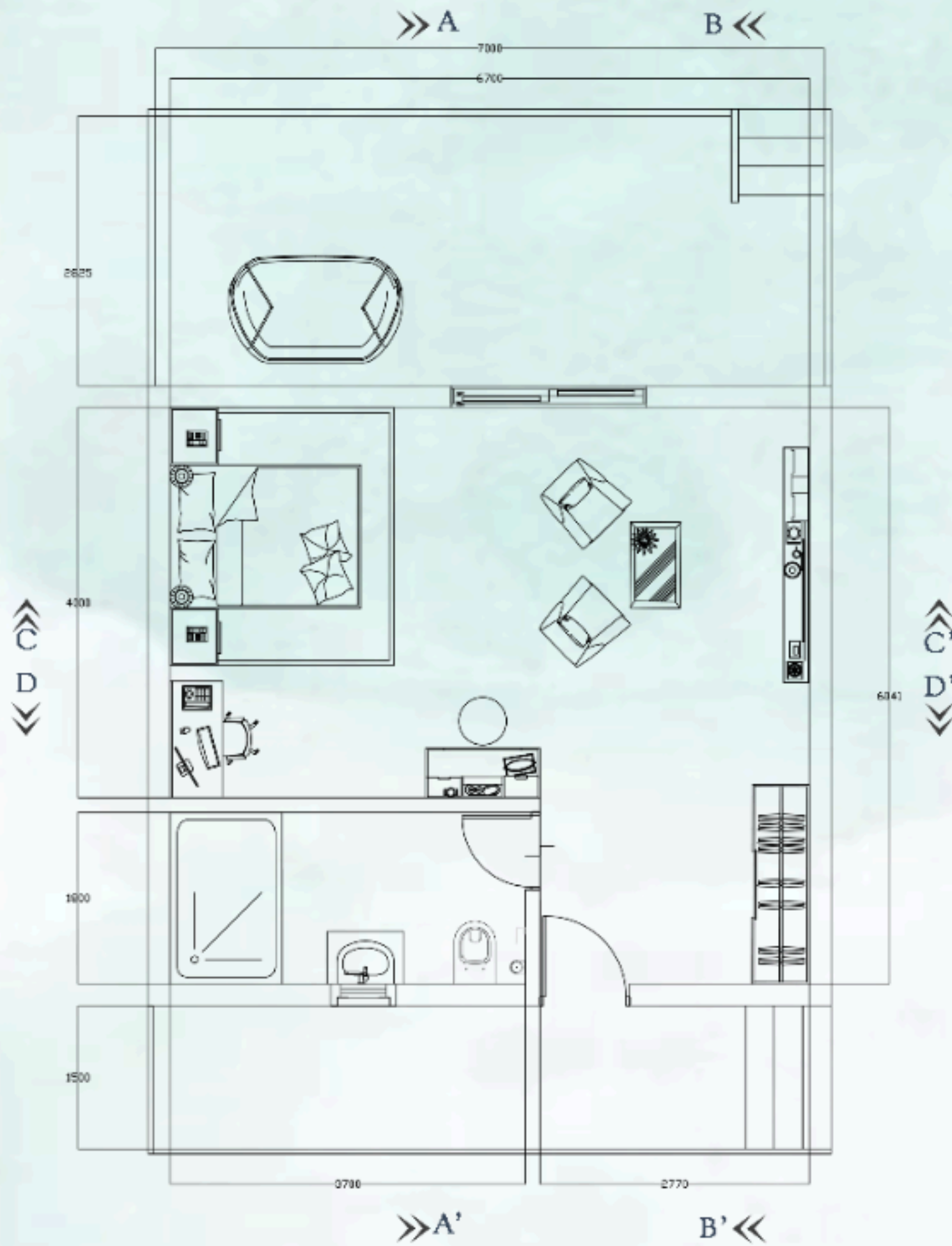


ROOM TYPE & DESCRIPTION

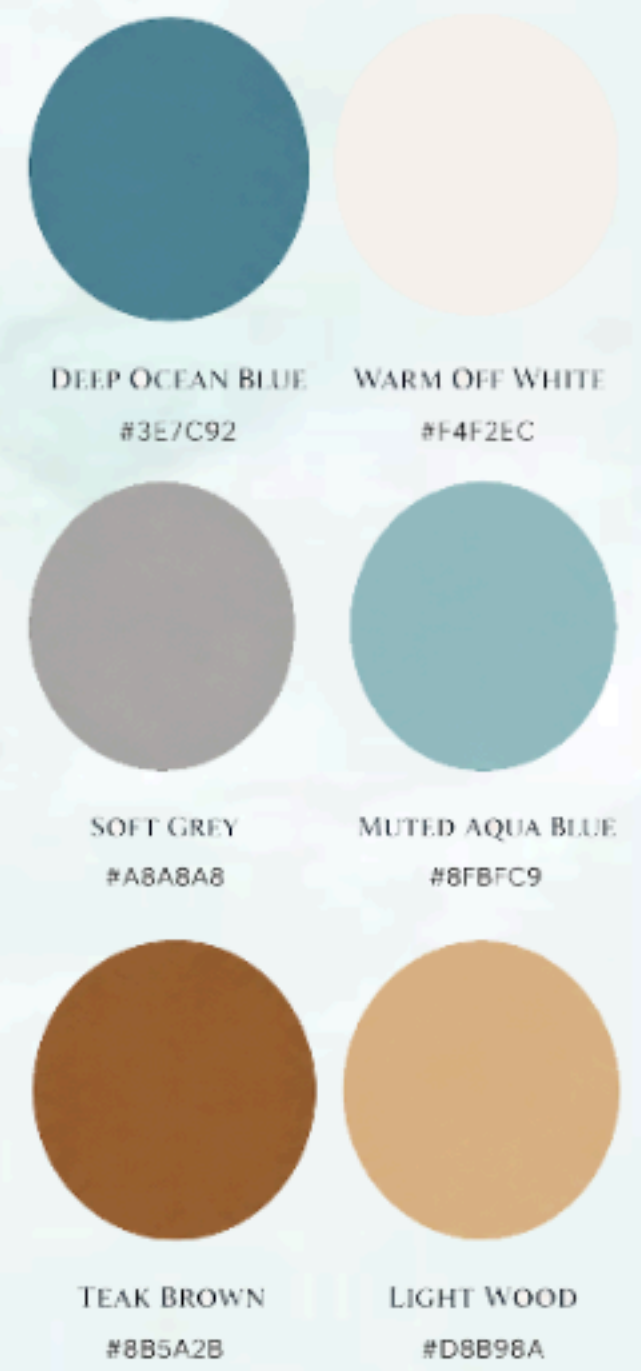
Deluxe Suite - Area: 46.53 SQ.M

A spacious 46.53 sqm layout designed for comfort and leisure. The suite offers a distinct sleeping zone, a dedicated lounge area, and a private bathroom, ensuring a seamless balance between functionality and luxury.

FURNITURE LAYOUT PLAN

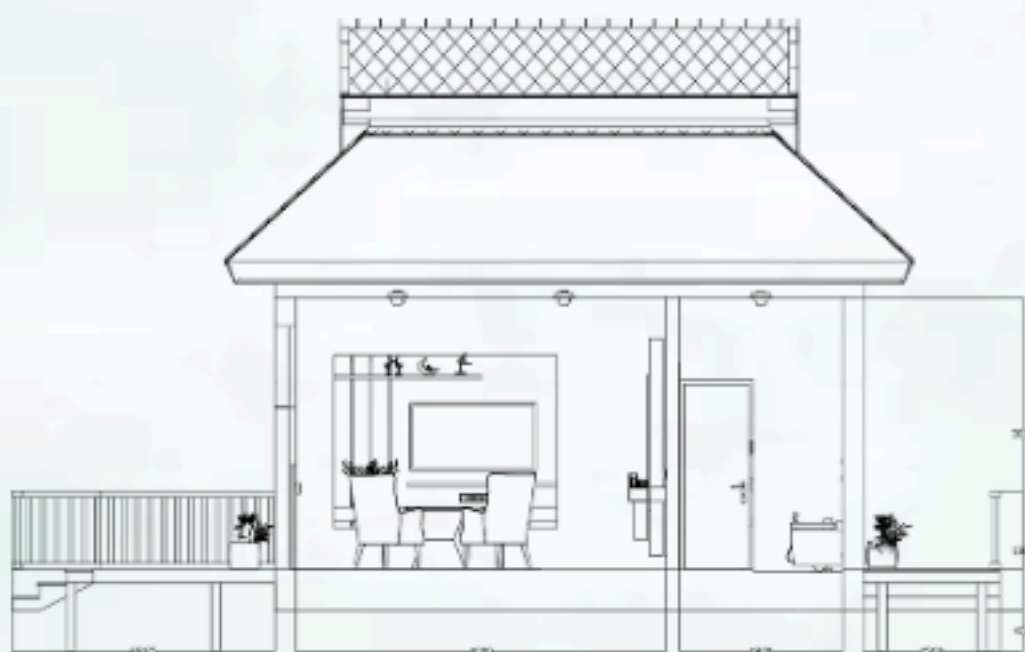


COLOR PALETTE

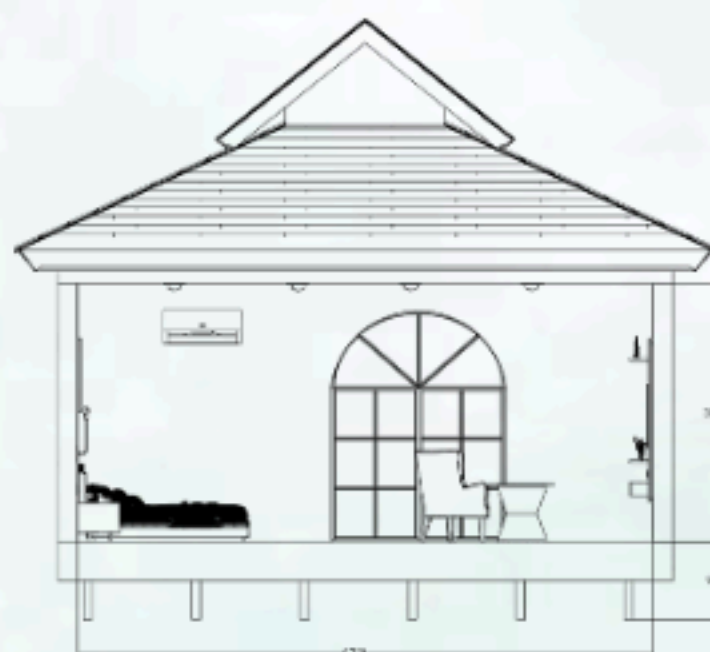


SECTIONS

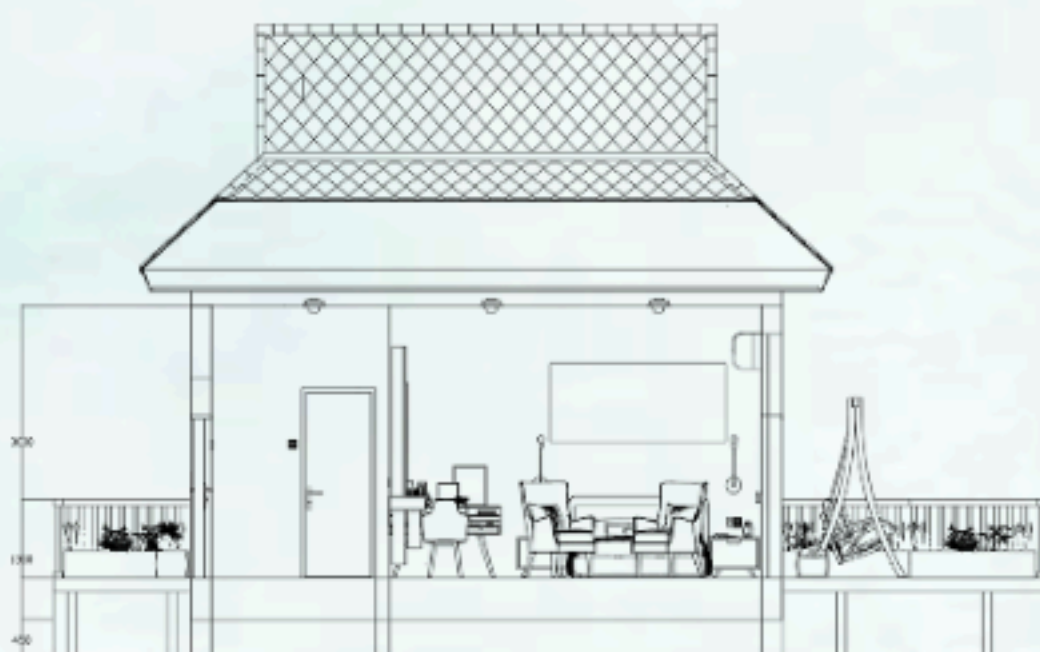
SECTION A - A'



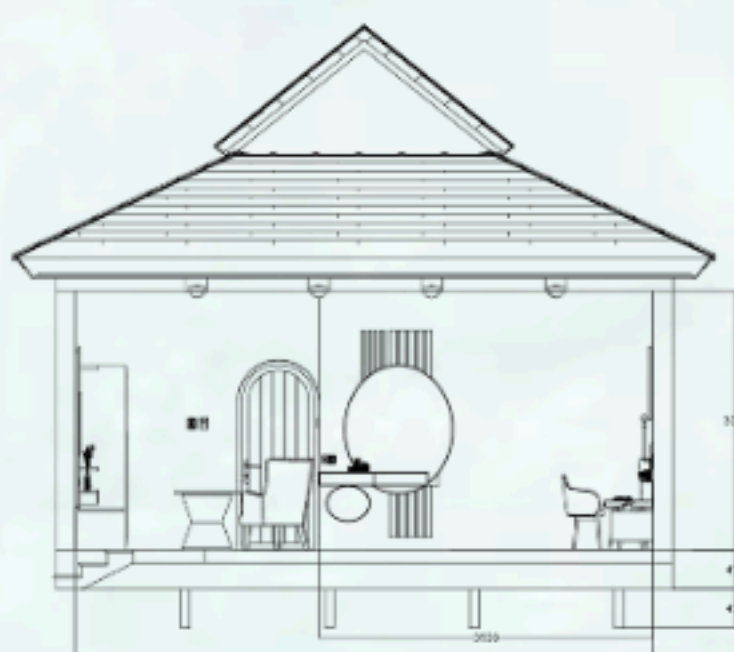
SECTION B - B'



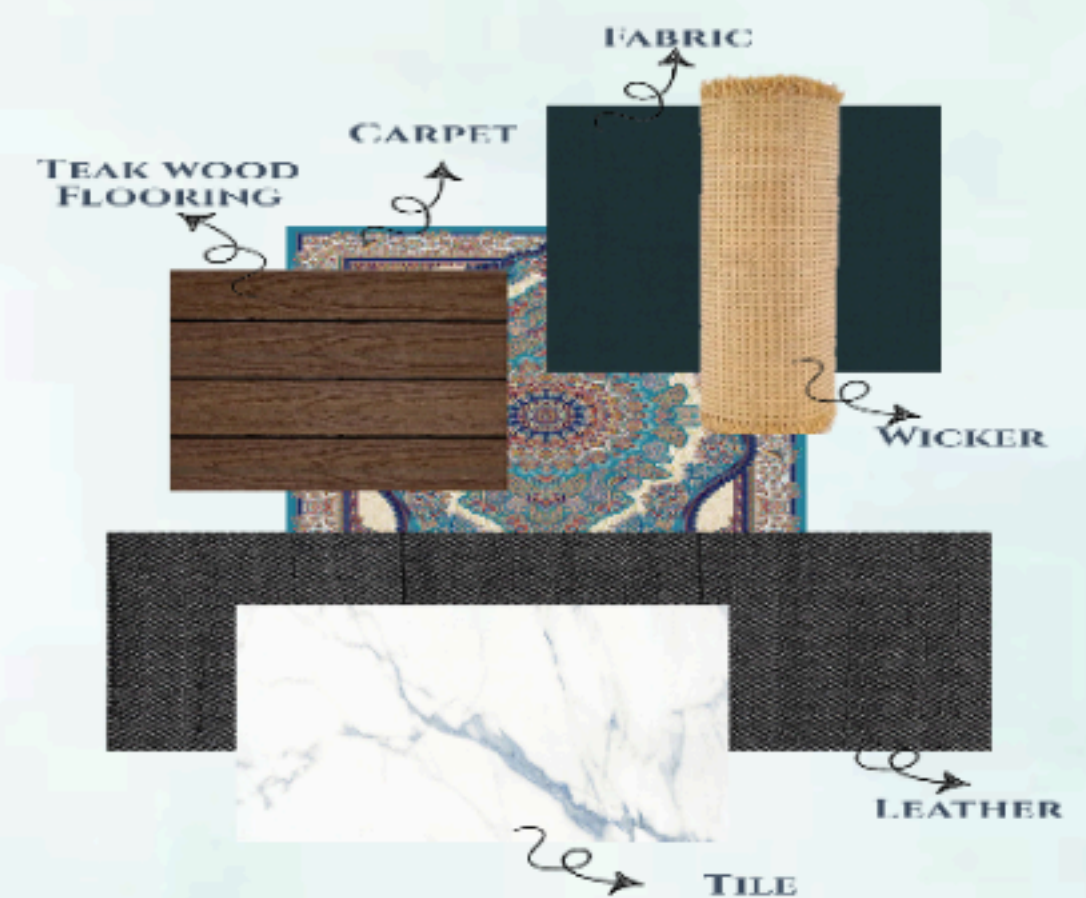
SECTION C - C'



SECTION D - D'



MOOD BOARD



DESIGN FEATURES

- Natural ventilation strategy
- Use of local and sustainable materials
- Indoor outdoor visual connection
- Minimal yet functional furniture layout
- Warm and relaxing coastal ambiance

NOTES / SUSTAINABILITY

- Natural cross ventilation improves indoor comfort and reduces energy consumption
- Locally sourced materials support sustainability and craftsmanship
- Large openings create strong indoor outdoor connection



SUITE ROOM

ROOM TYPE & DESCRIPTION

Suite Room - Area: 112.47 SQ.M

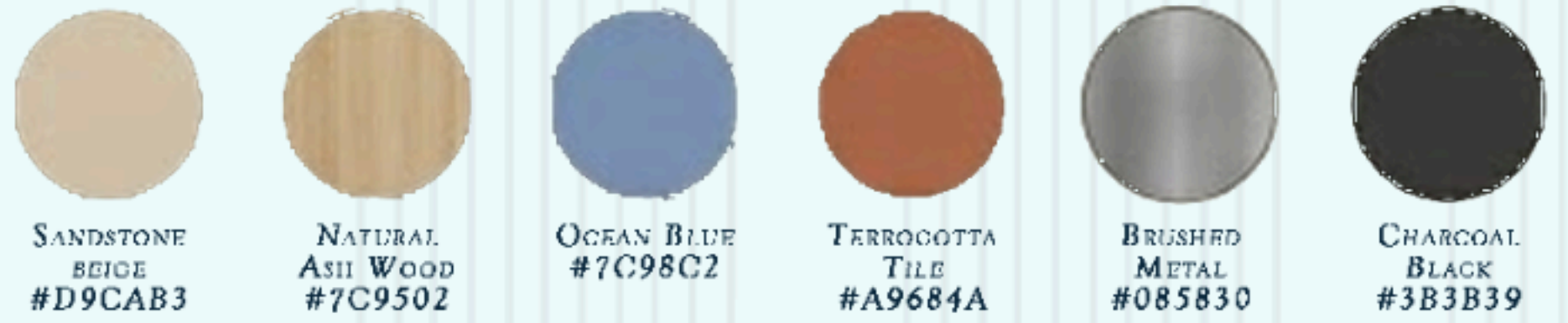
(Interior: 65.95 SQ.M, Outdoor: 46.52 SQ.M)

A coastal Mediterranean suite room designed to combine luxury, comfort, and indoor-outdoor living.

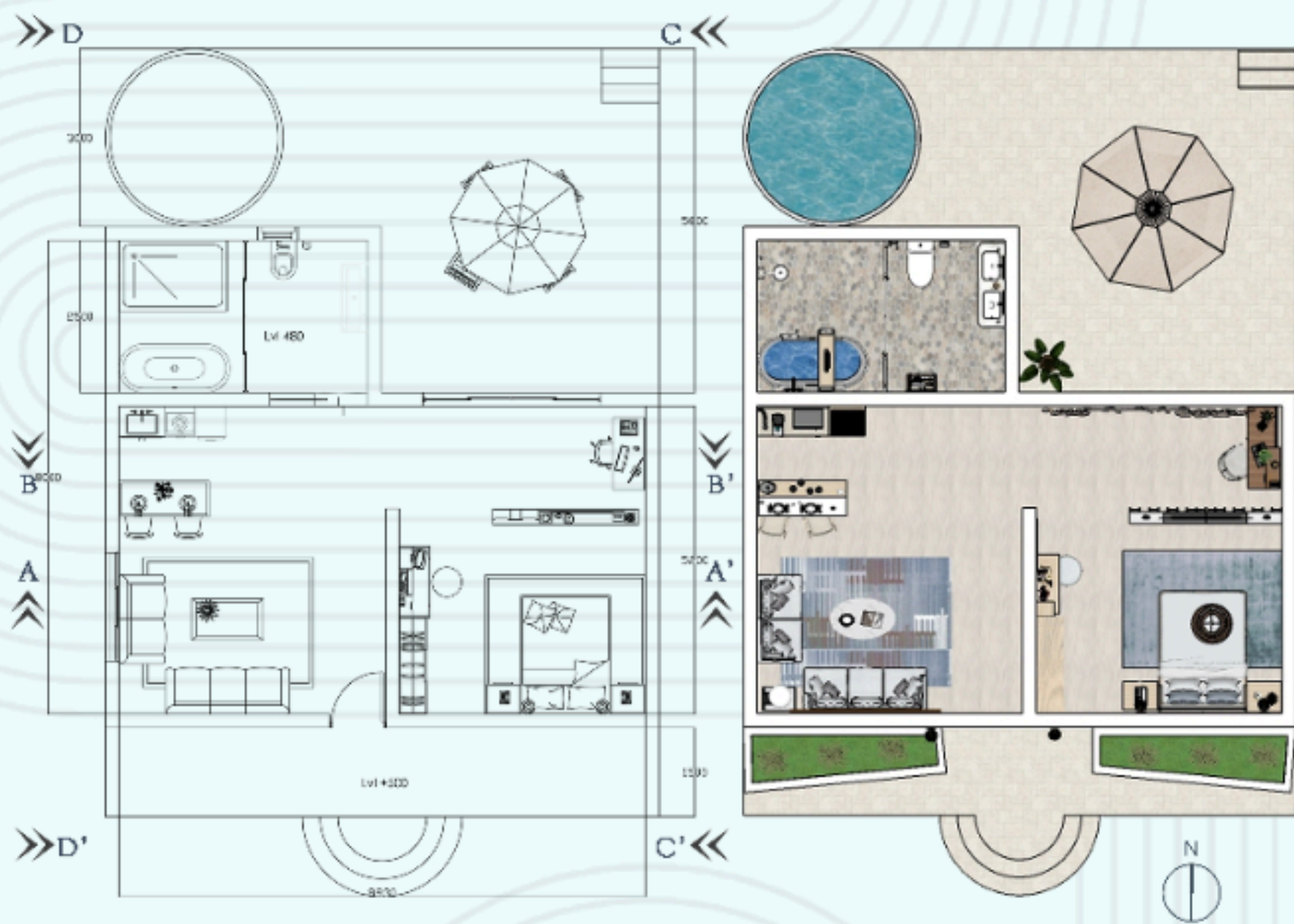
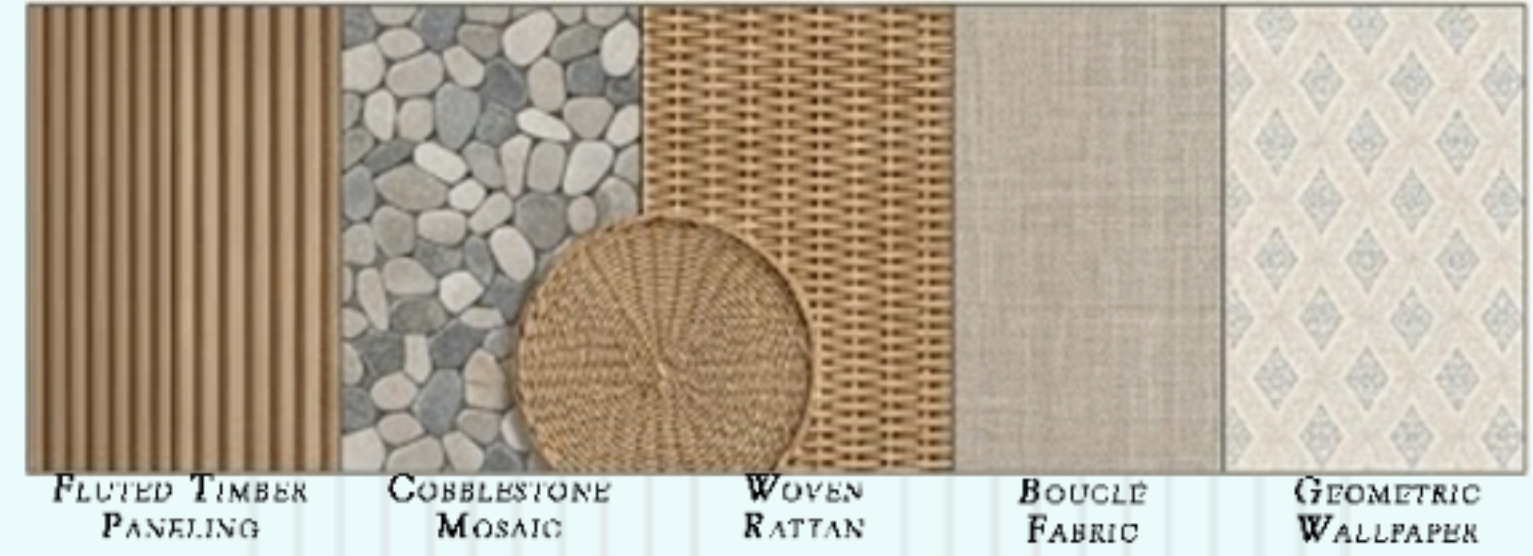
The suite includes a lounge area, bedroom space, pantry, and luxury bath connected to a private deck and pool area, creating a relaxing tropical resort experience.



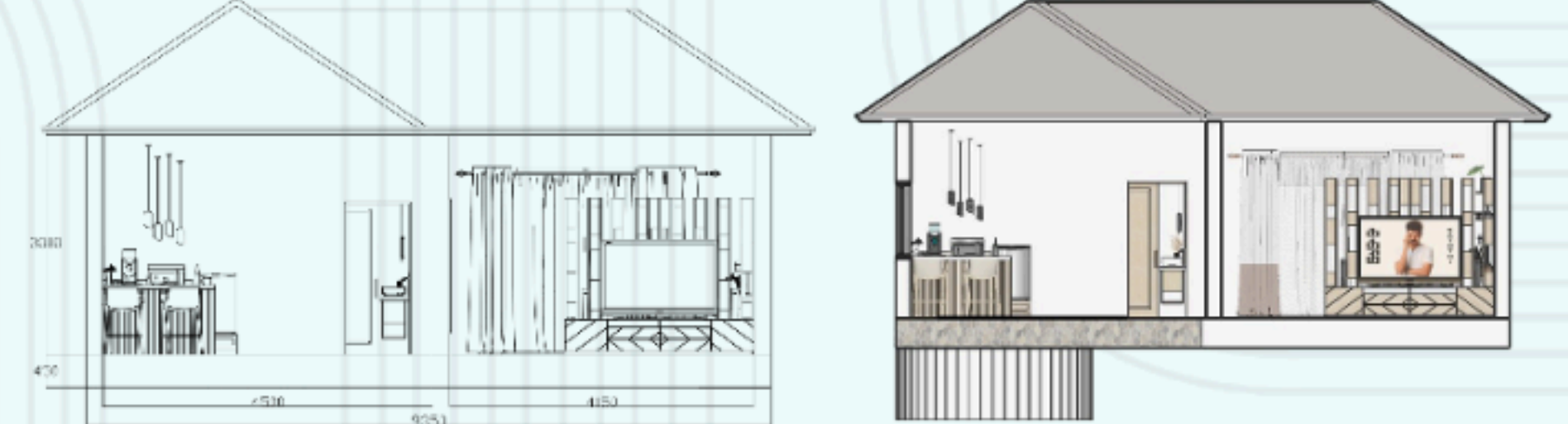
COLOR PALETTE



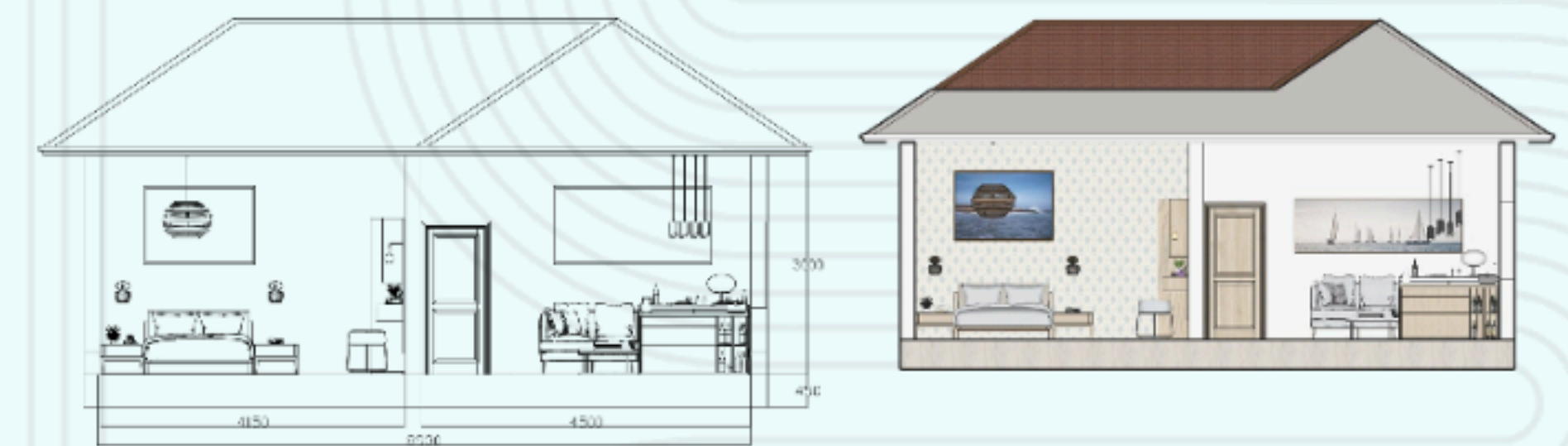
MOOD BOARD



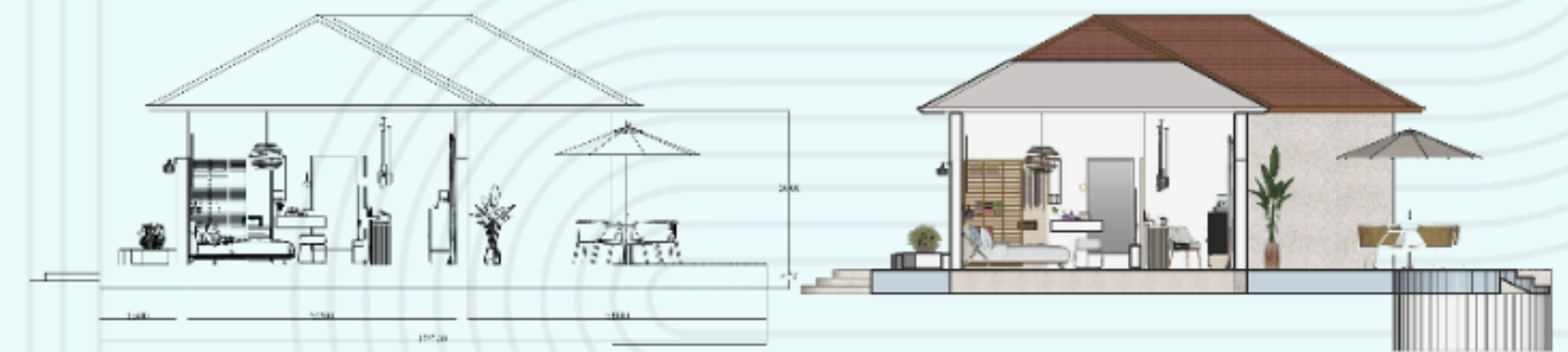
SECTION AA'



SECTION BB'



SECTION CC'



SECTION DD'





FAMILY VILLA



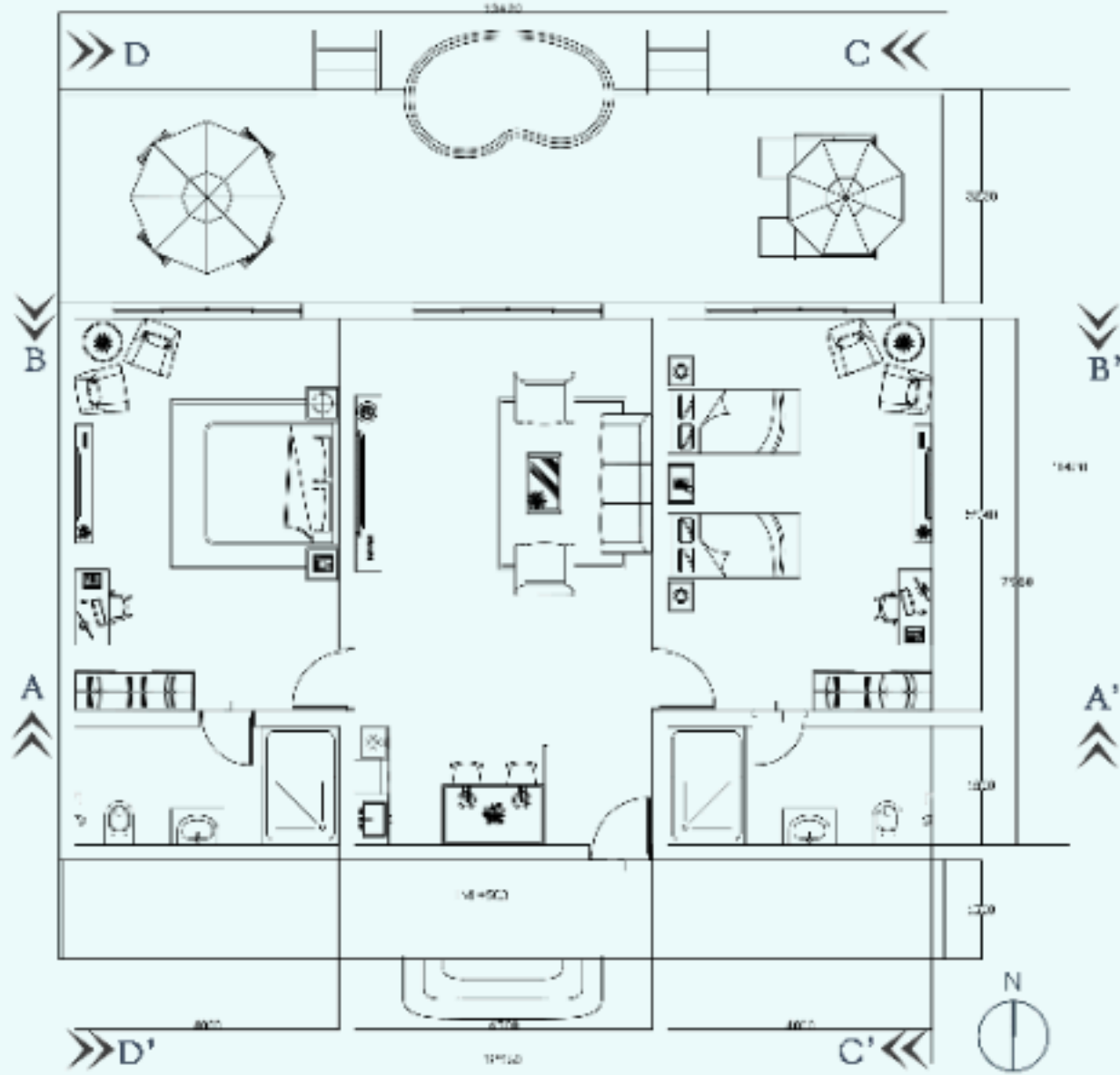
ROOM TYPE & DESCRIPTION

Family Villa - Area: 169.43 SQ.M

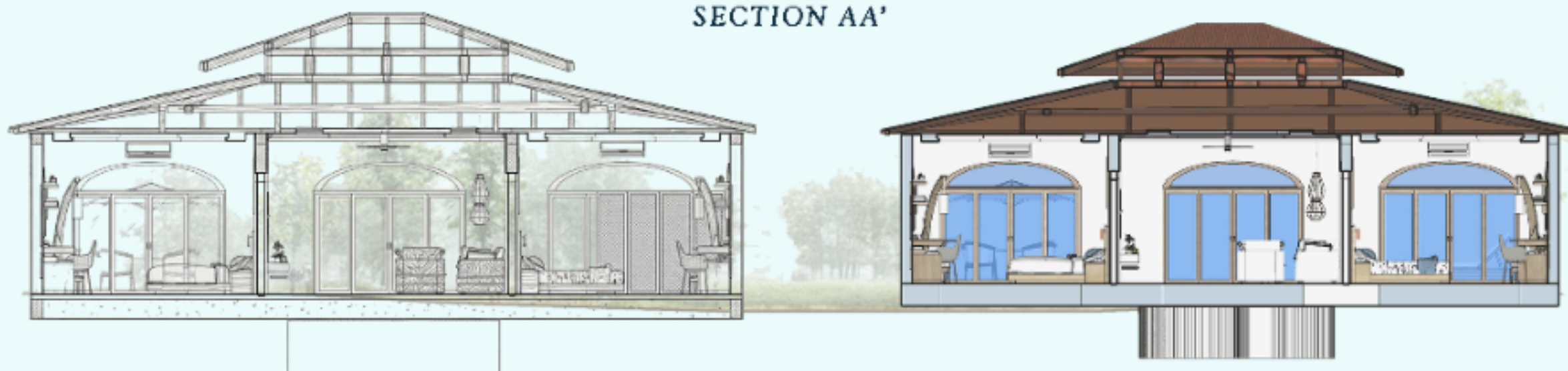
(Interior: 113.03 SQ.M, Outdoor: 56.40 SQ.M)

A coastal Mediterranean family villa designed for spacious and luxurious resort style living.

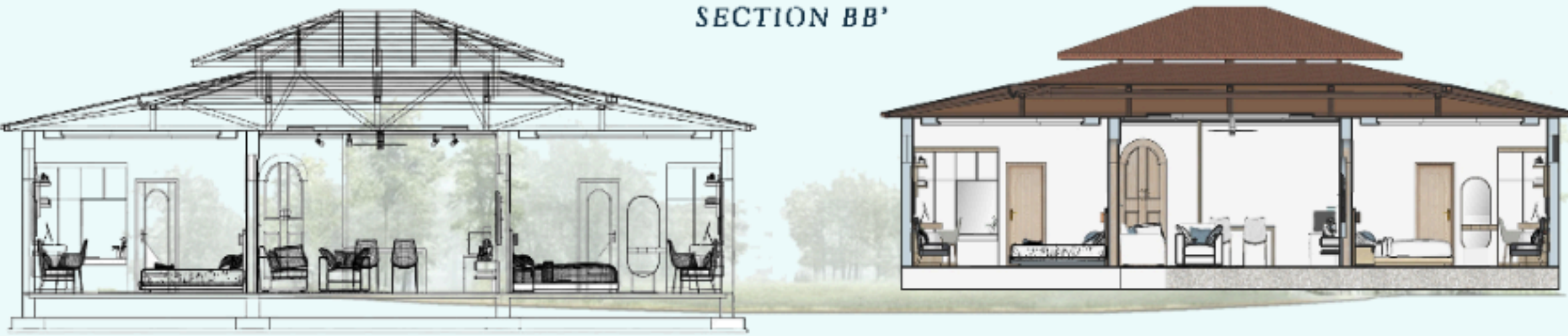
The villa features multiple sleeping areas, open lounge spaces, private bathrooms, and seamless connectivity to outdoor decks and pool areas, creating a comfortable and relaxing family retreat.



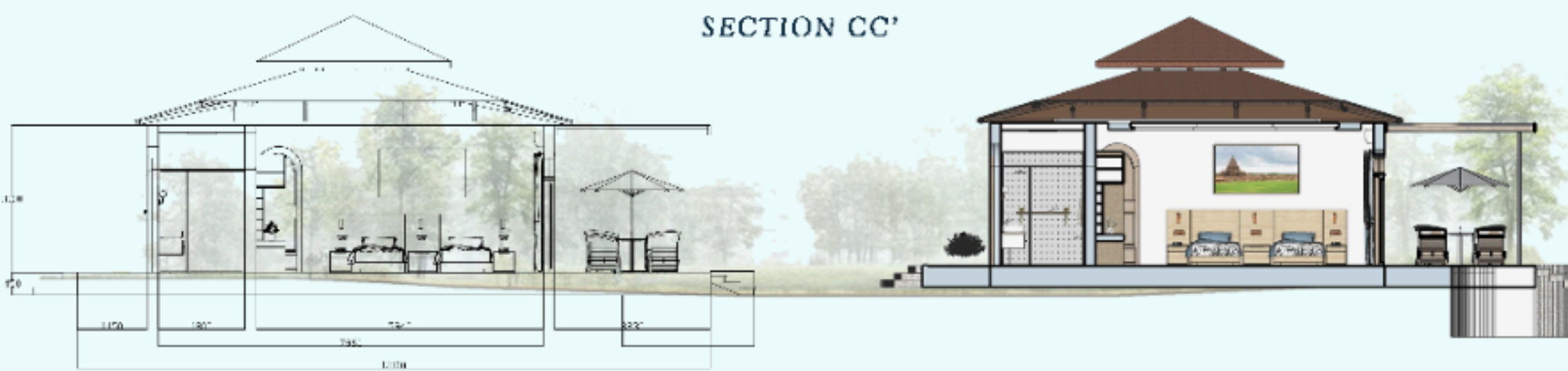
SECTION AA'



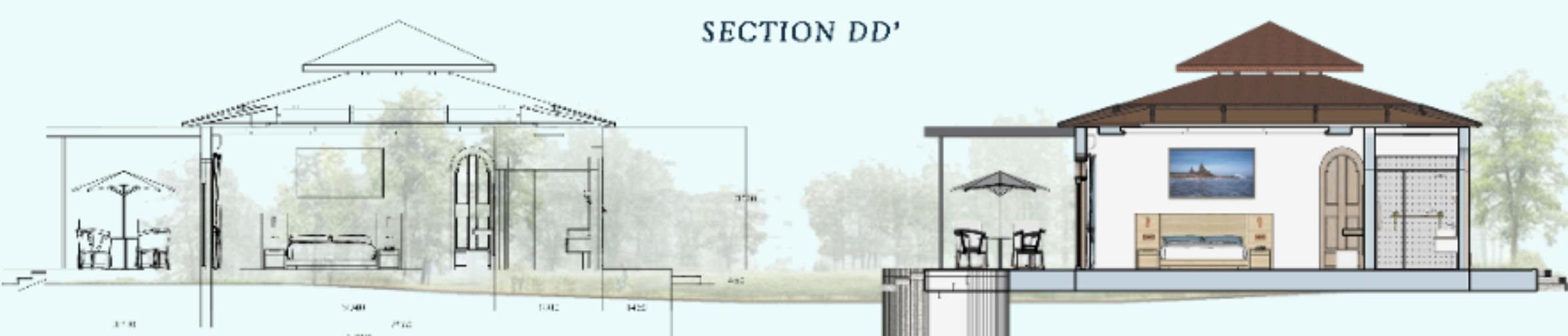
SECTION BB'



SECTION CC'



SECTION DD'



MOOD BOARD



COLOR PALETTE





COTTAGE

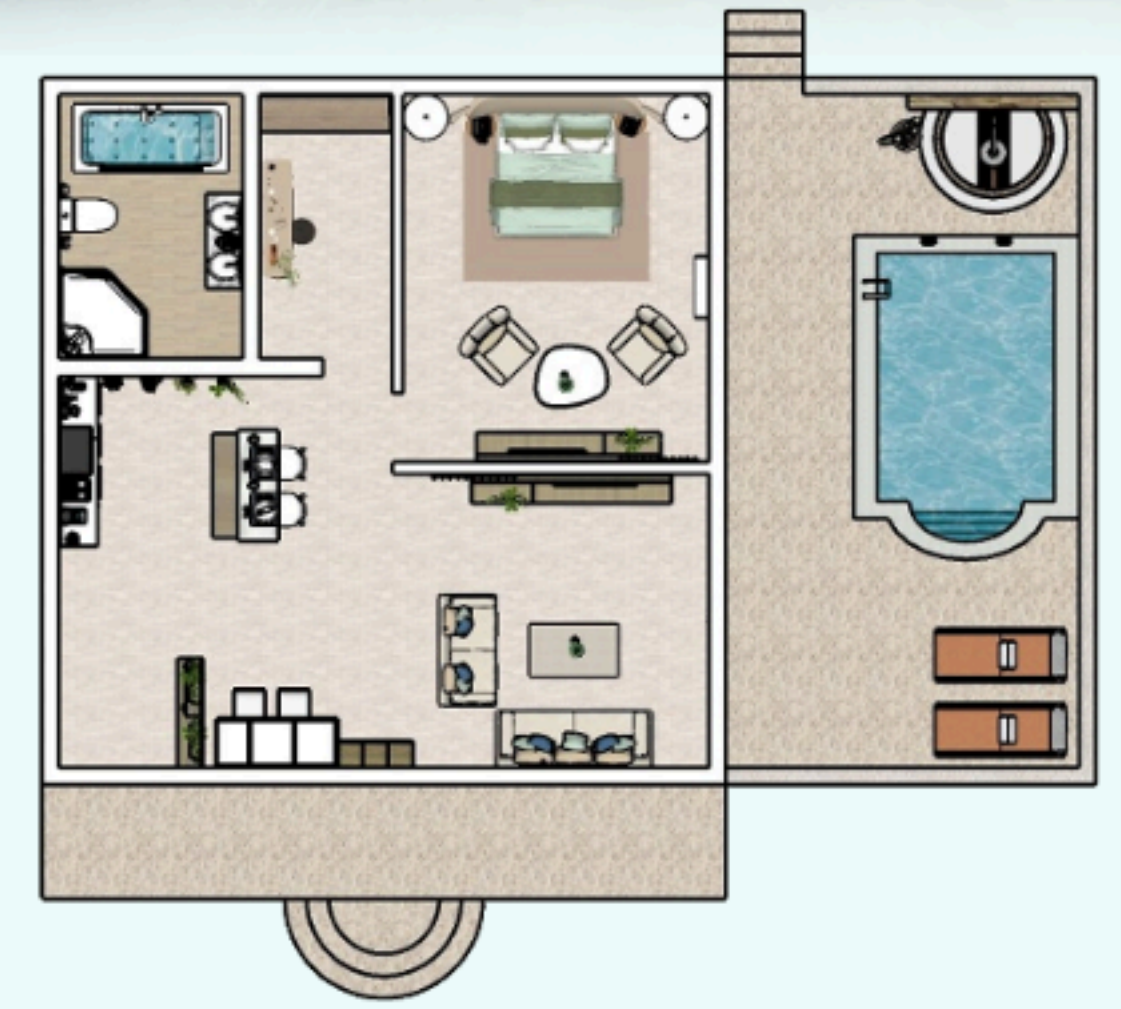
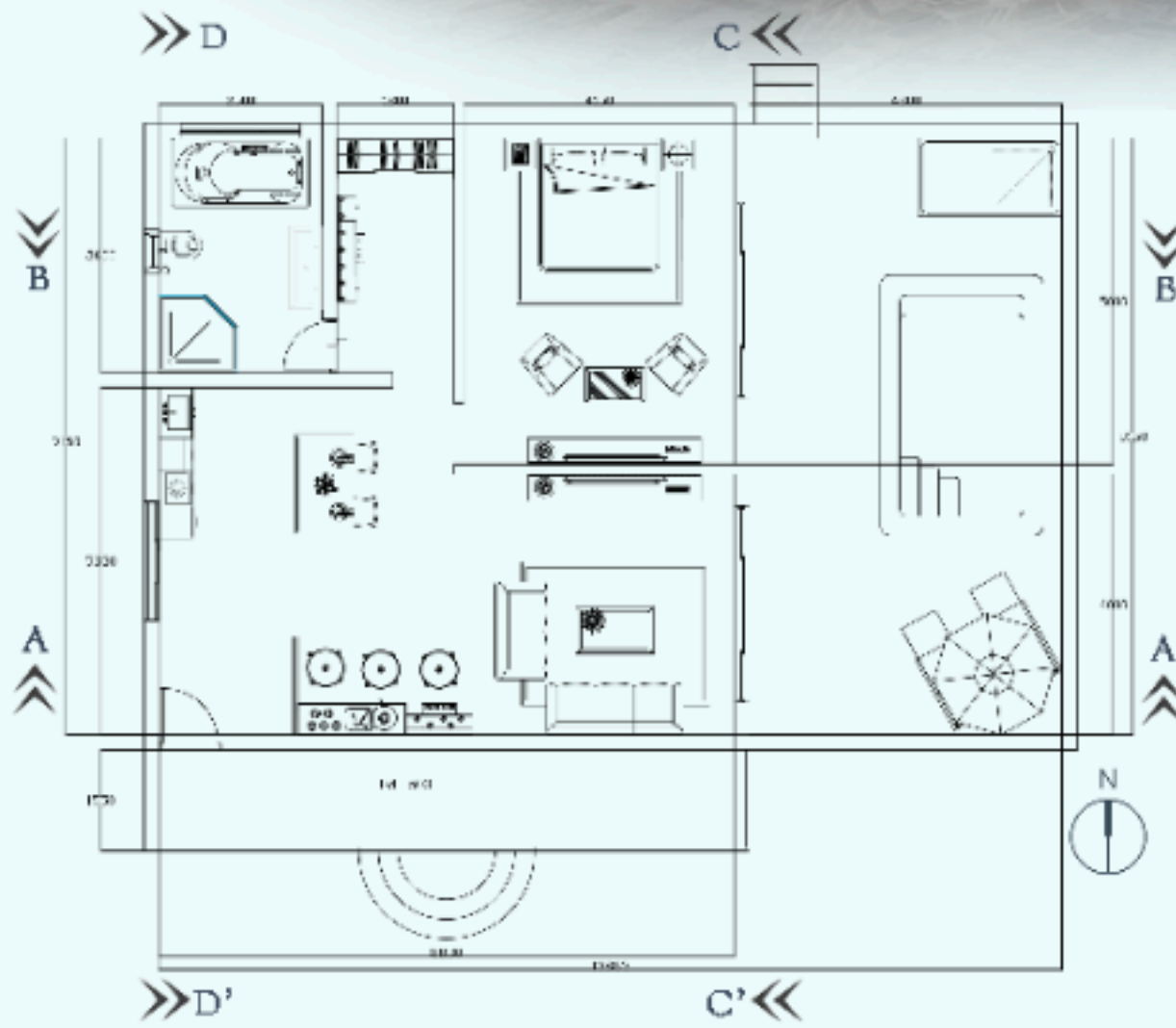
ROOM TYPE & DESCRIPTION

Family Villa - Area: 127.42 SQ.M

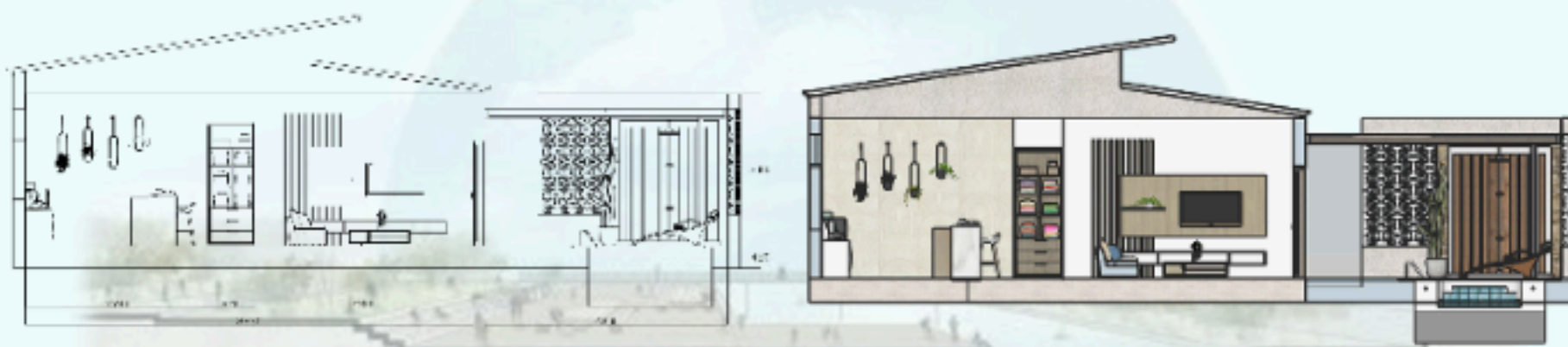
(Interior: 77.33 SQ.M, Outdoor: 50.09 SQ.M)

A coastal Mediterranean cottage designed to offer a balance of comfort, privacy, and resort style living.

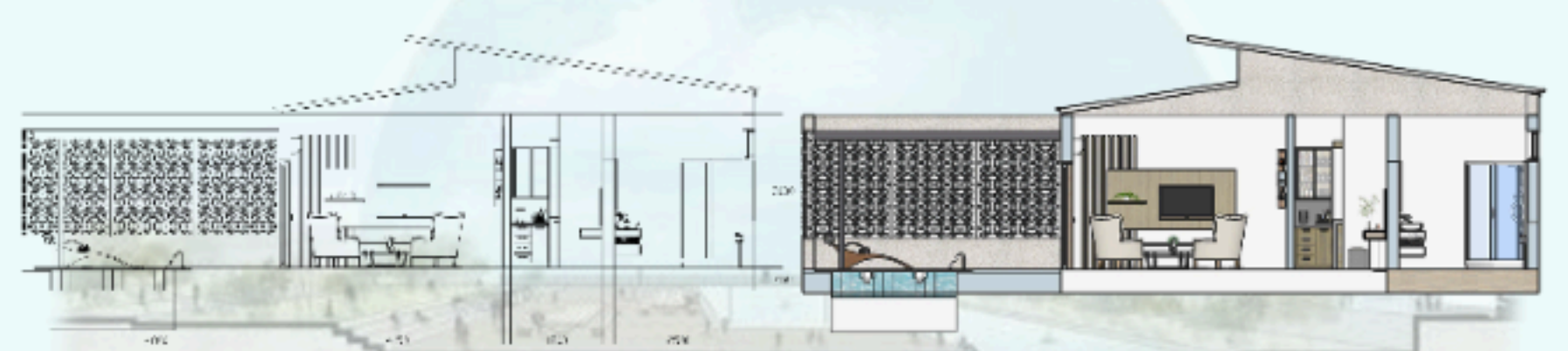
The cottage includes an open lounge, bedroom suite, pantry, luxury bath, and private outdoor pool deck, creating a calm and relaxing tropical retreat.



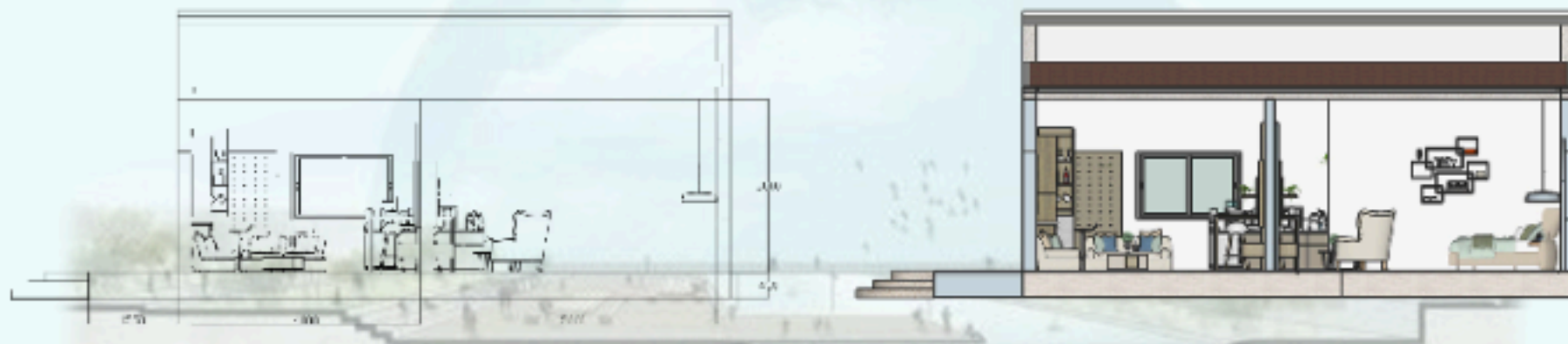
SECTION AA'



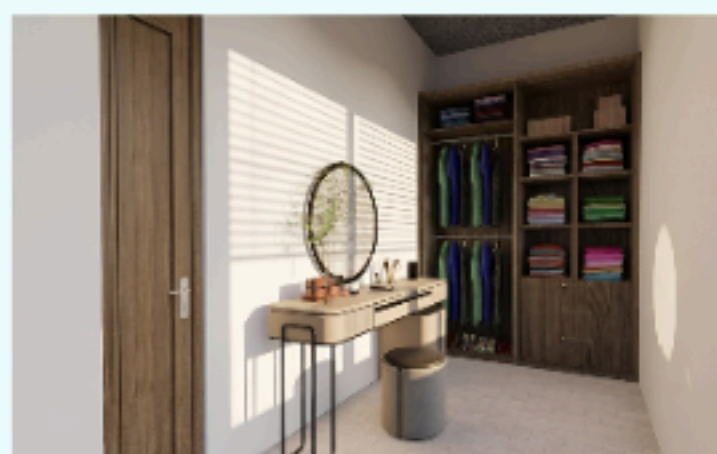
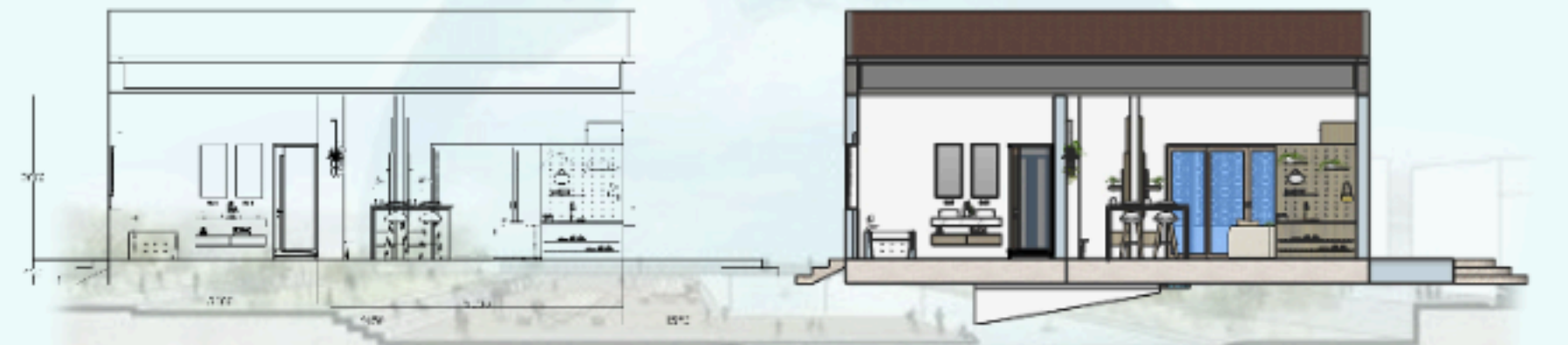
SECTION BB'



SECTION CC'



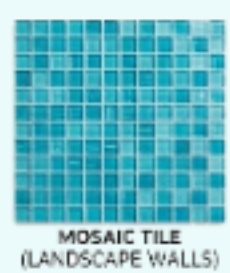
SECTION DD'



MOOD BOARD



MEDIUM-DARK WOOD (WARDROBE/TV UNIT)



MOSAIC TILE (LANDSCAPE WALLS)



STONE MASONRY (LANDSCAPE WALLS)



PERFORATED JALI (PATIO SCREEN)



CONCRETE (CEILING)

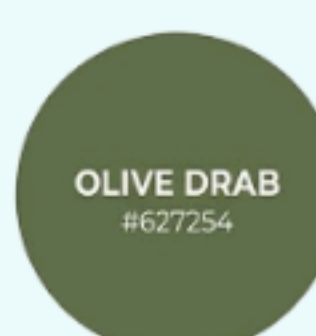
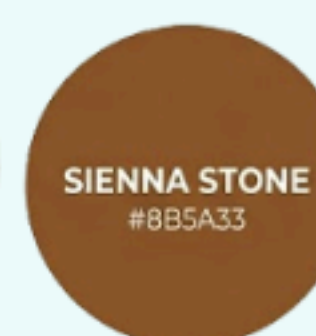


CREAM UPHOLSTERY (CHAIR/COUCH)



LIGHT WOOD (DRESSER/DOOR)

COLOR PALETTE



COTTAGE



PRESIDENTIAL

ROOM TYPE & DESCRIPTION

Presidential Suite - Area: 167.25 SQ.M

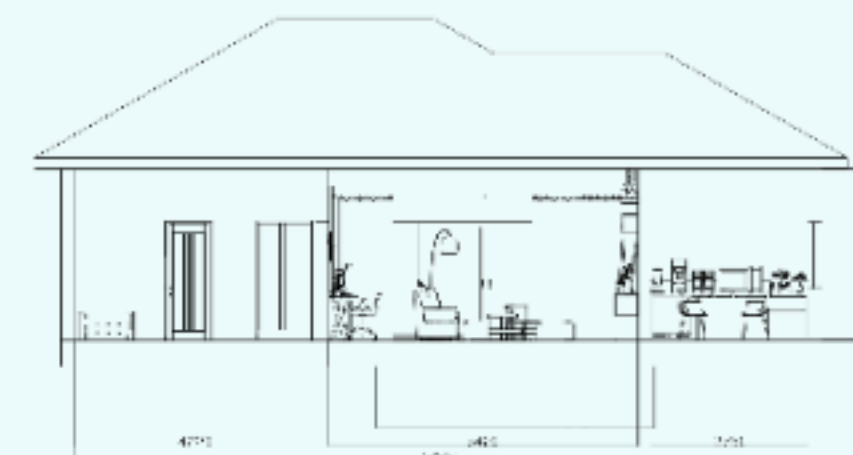
(Interior: 94.70 sqm
Outdoor: 72.55 sqm)

A luxurious coastal Mediterranean presidential suite designed for premium resort living.

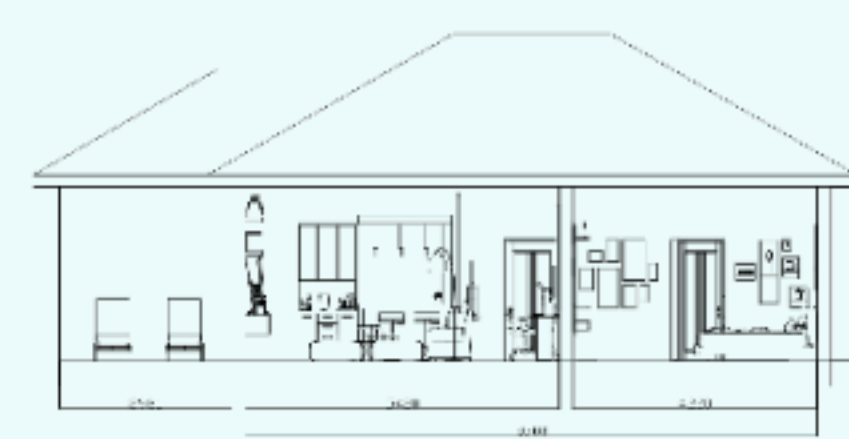
The suite features spacious lounge and sleeping areas, elegant interiors, luxury amenities, and expansive outdoor spaces with a private deck and pool, creating an exclusive and relaxing retreat experience.



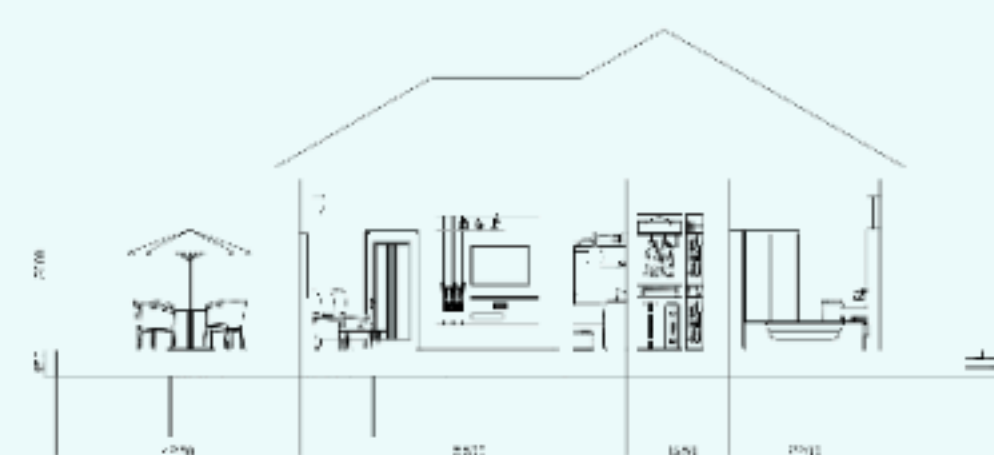
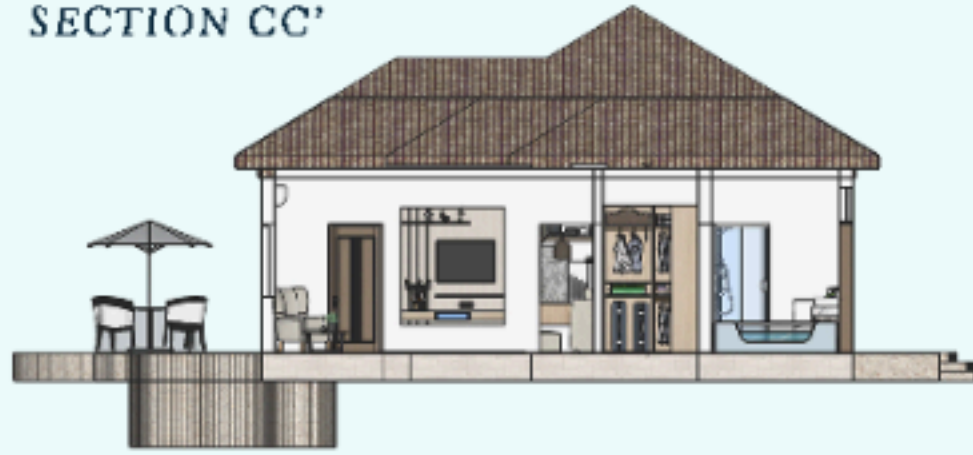
SECTION AA'



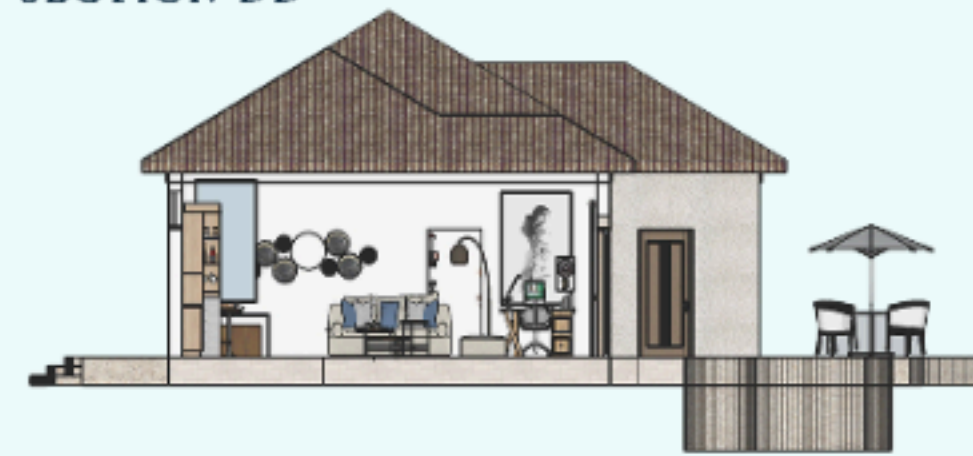
SECTION BB'



SECTION CC'

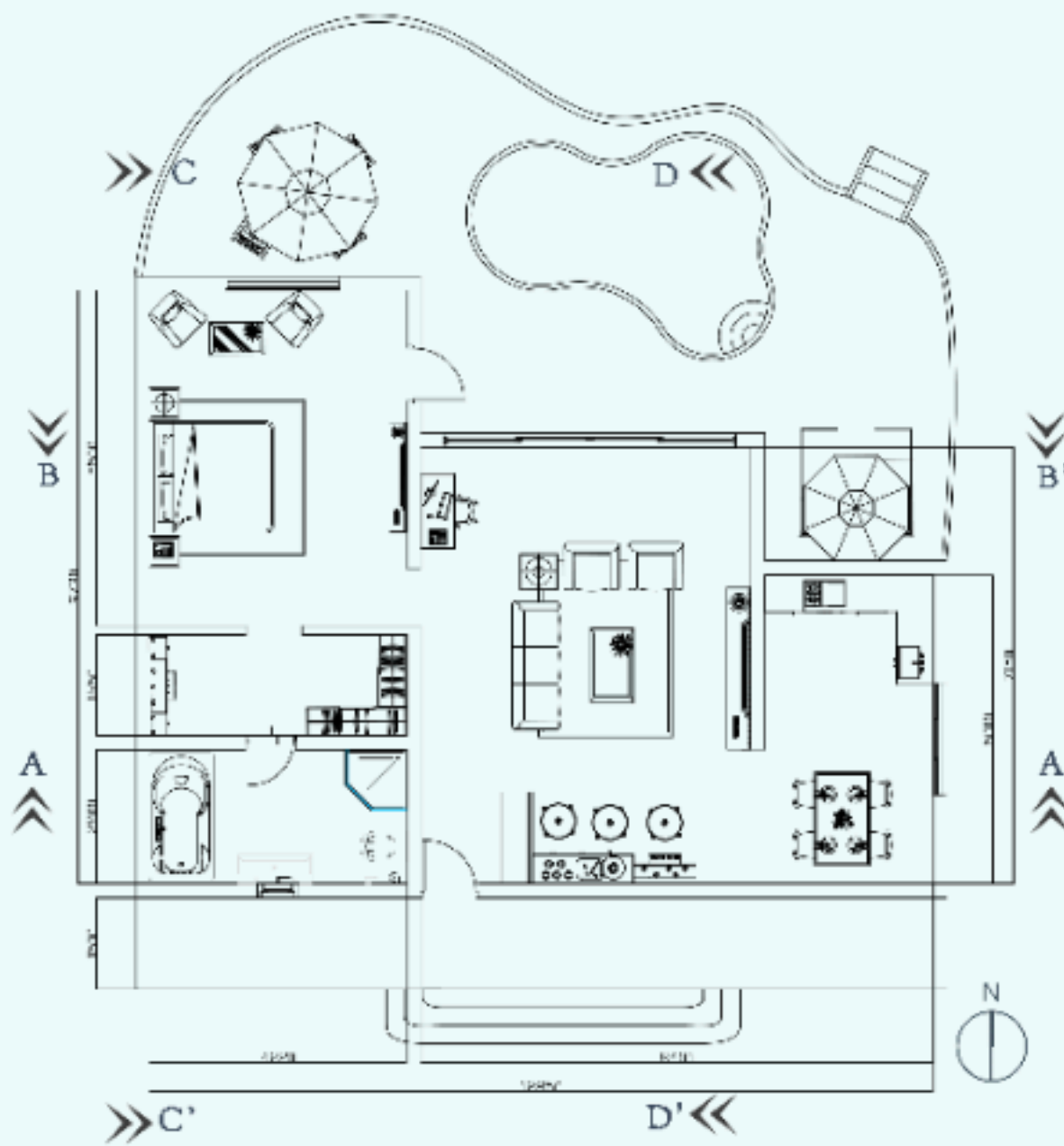


SECTION DD'



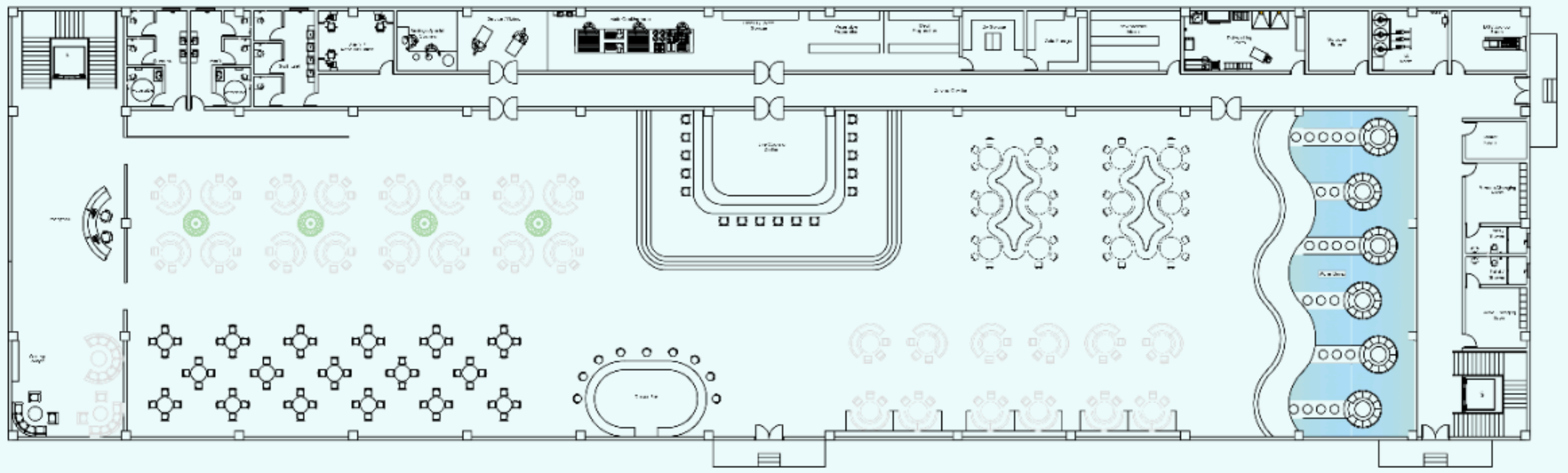
COLOR PALETTE & MOOD BOARD	
	WALLS & FLOORING
	GLASS & METAL ACCENTS
	TEXTILES & UPHOLSTERY
	TEXTILES & UPHOLSTERY
	WALLS & FLOORING
	WALLS & FLOORING

	LIMEWASH PLASTER Walls Finish
	NATURAL STONE Flooring
	TERRAZZO Bathroom Surfaces
	HANDMADE TILE Feature & Backsplash
	TEAK WOOD Doors & Furniture
	RATTAN / WICKER Accents & Furniture
	ROUGH STONE Exterior Walls
	LINEN FABRIC Soft Furnishings

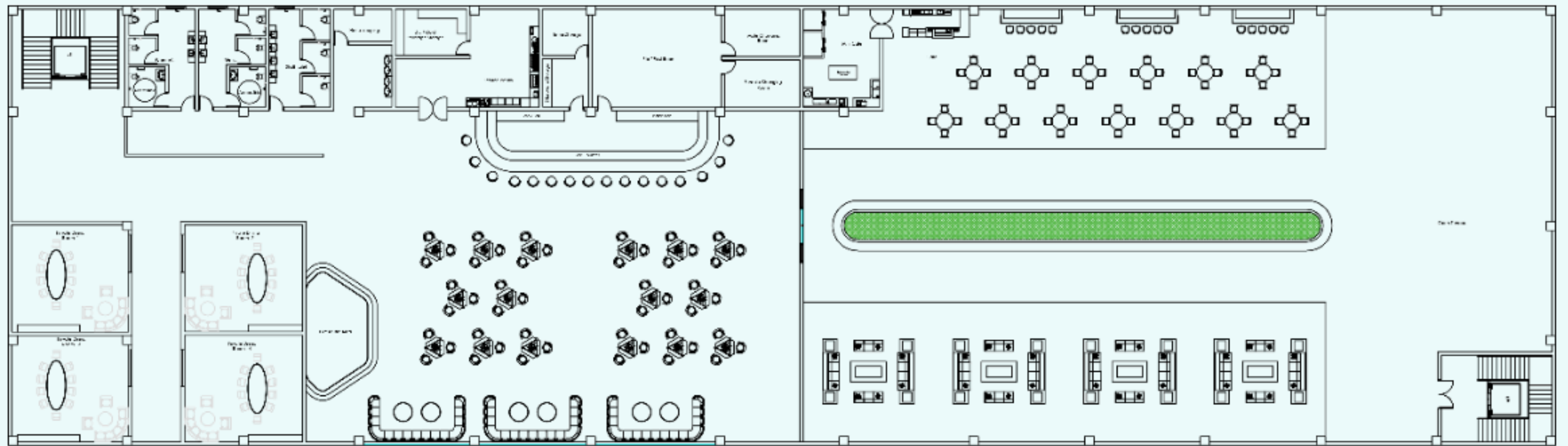


RESTAURANT BLOCK

ENTRANCE FROM THE LOBBY
Total Area of the Ground Floor
2837 sq m

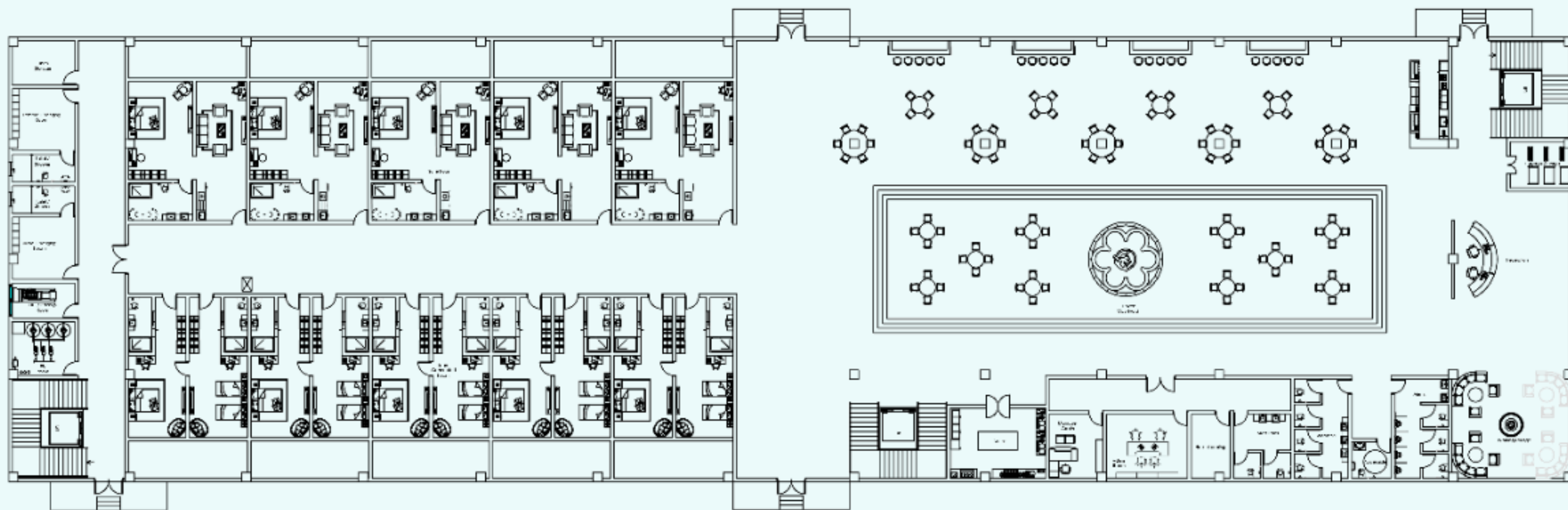


First Floor 2837 sq m

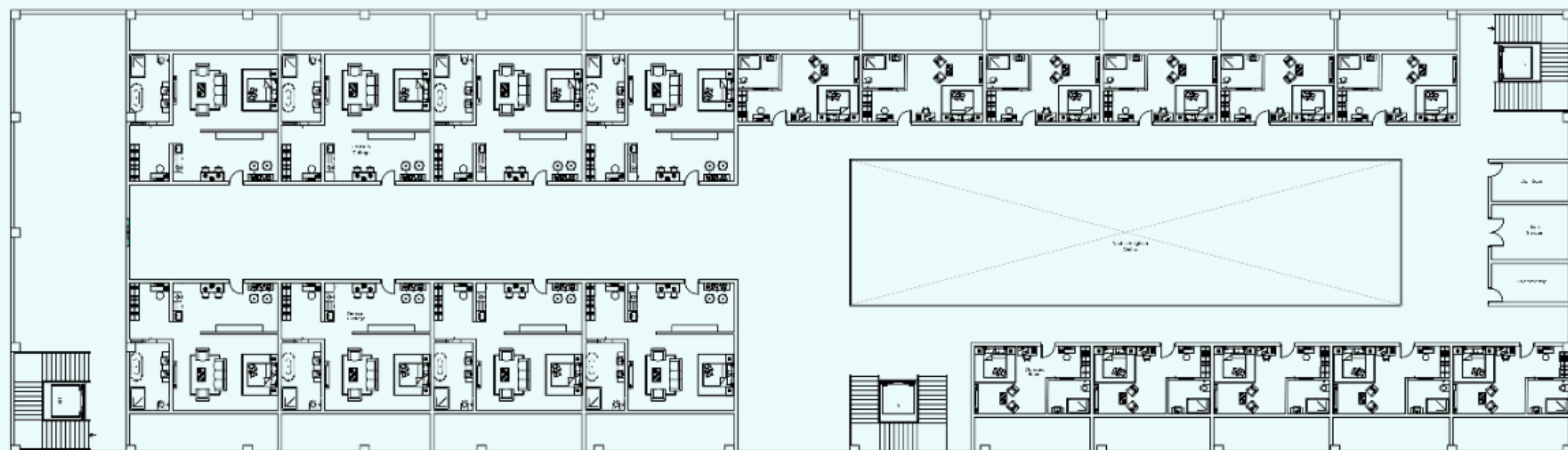


HOTEL BLOCK

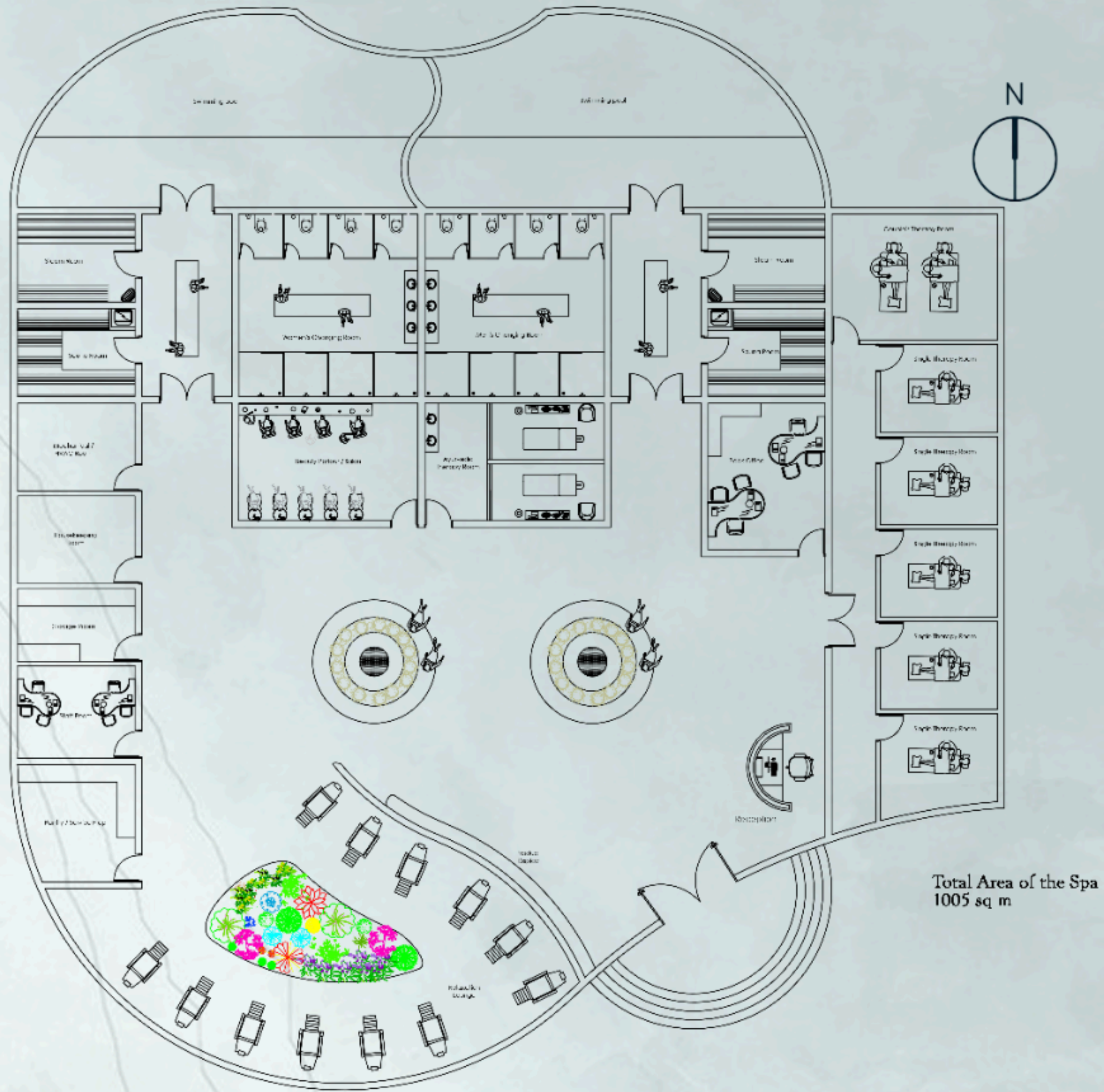
ENTRANCE FROM THE LOBBY
Total Area of the Ground Floor
2837 sq m



First Floor 2837 sq m

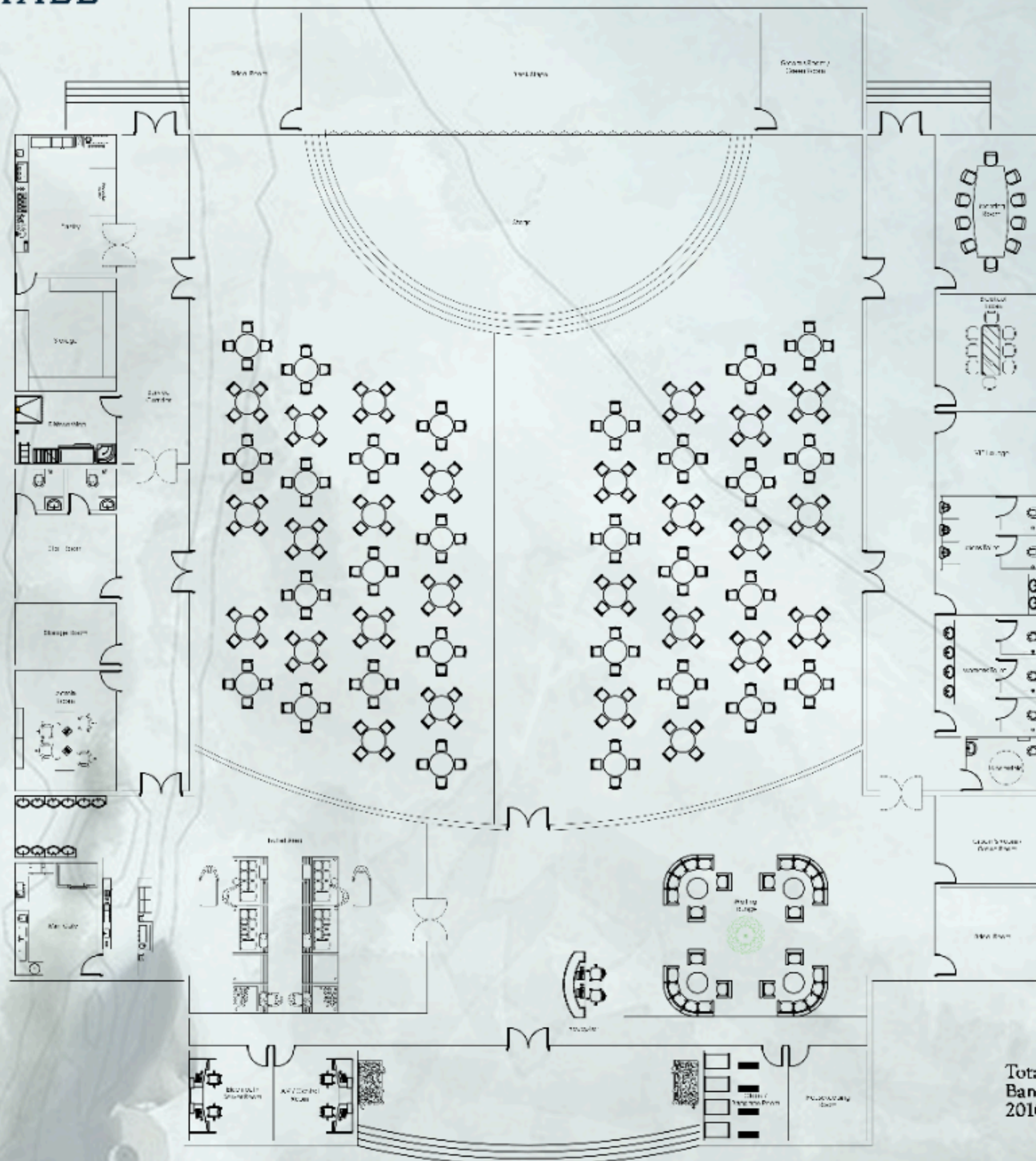


SPA



Total Area of the Spa
1005 sq m

BANQUET HALL



Total Area of the
Banquet Hall
2010 sq m