



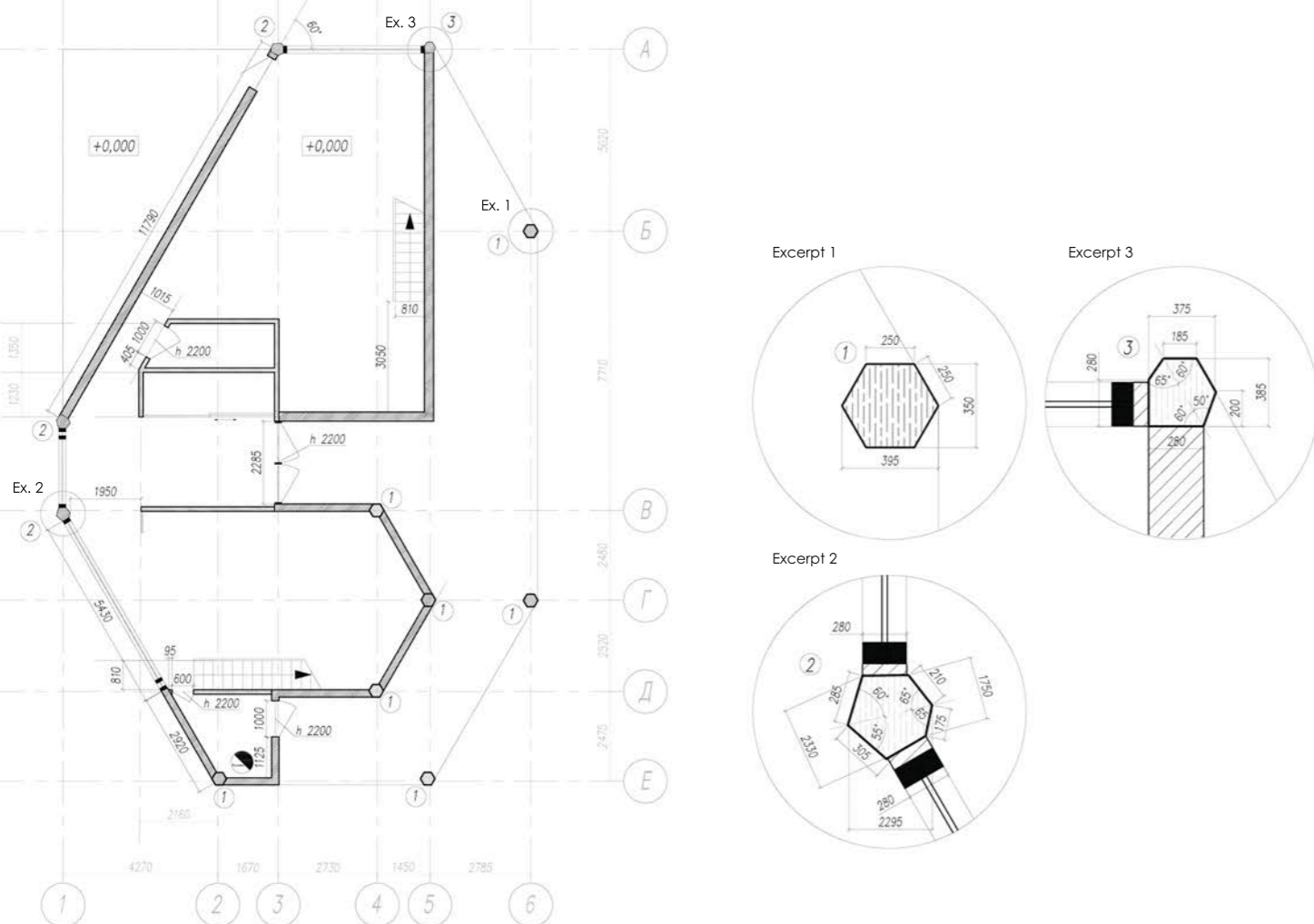
Group practice room on the ground floor



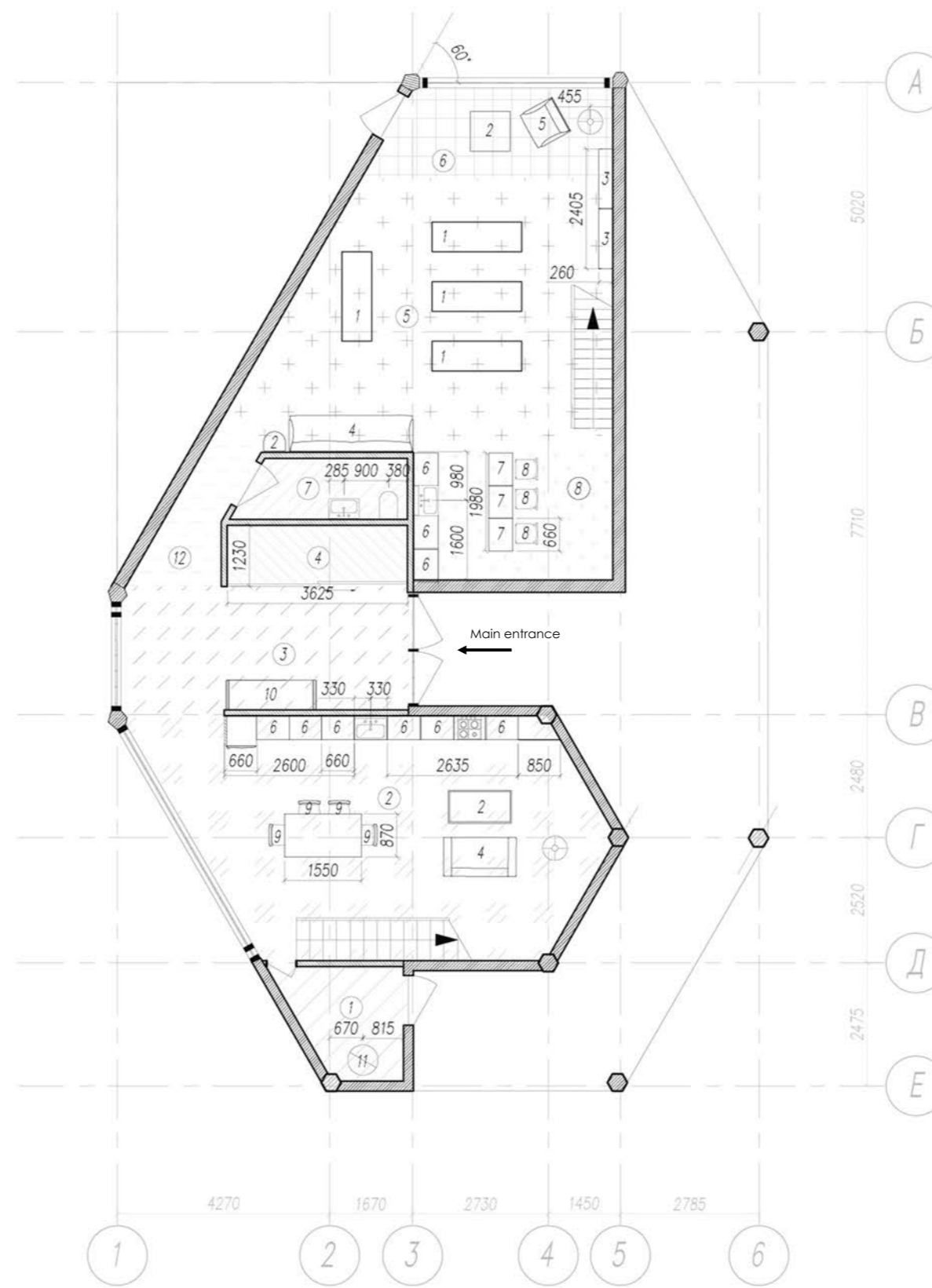
Master bedroom on the first floor interior visualisations



Kitchen on the ground floor interior visualisation



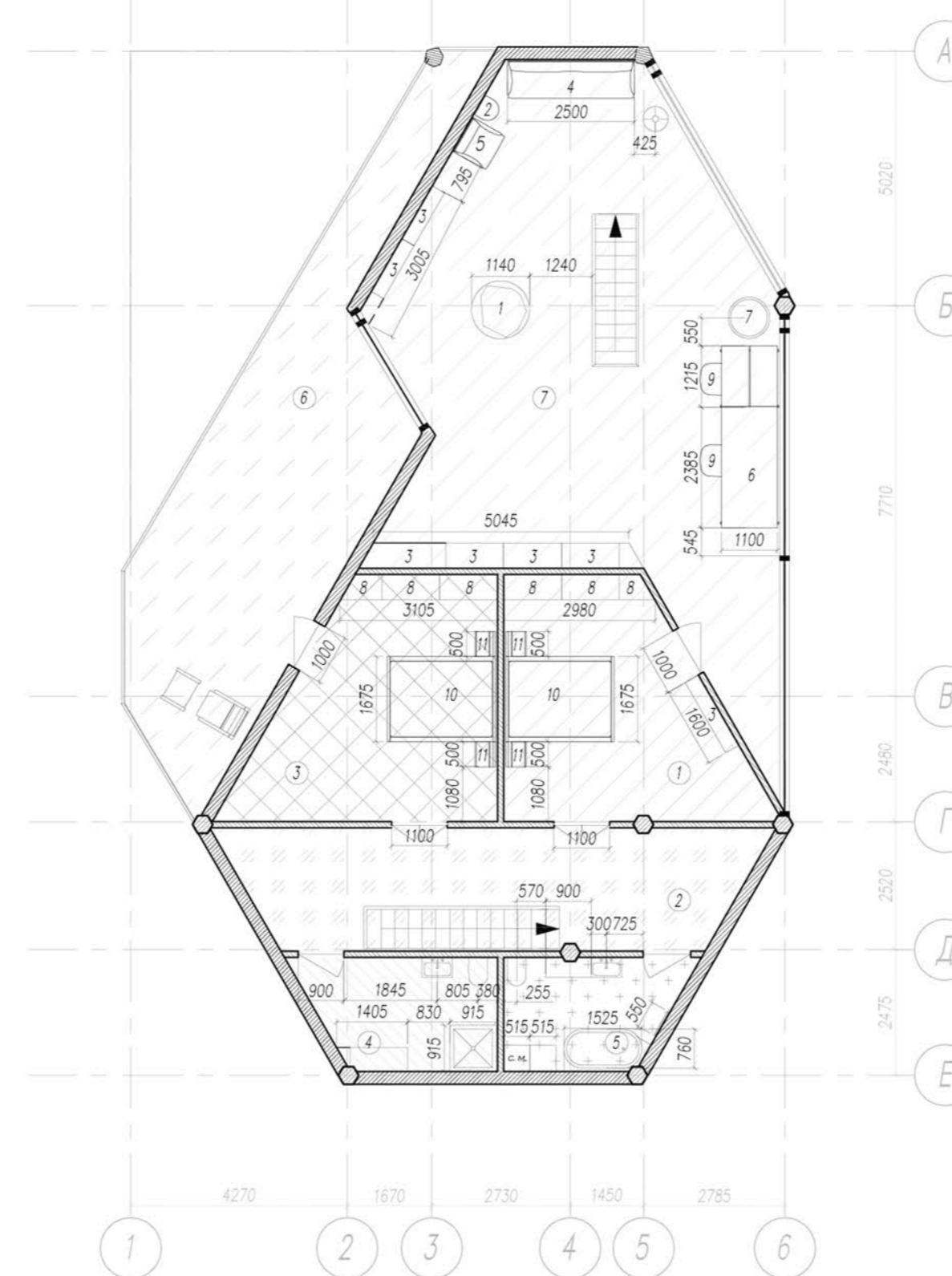
To create the house's complex hexagonal layout, drawings were developed for uniquely shaped columns designed to support the structure



Ground floor plan

- ① Boiler room (5 sq. m)
- ② Kitchen-living room (40 sq. m)
- ③ Entryway (15 sq. m)
- ④ Storage room (4 sq. m)
- ⑤ Group practice area (36 sq. m)
- ⑥ Client consultation area (8 sq. m)
- ⑦ Bathroom (4 sq. m)
- ⑧ Kitchenette (10 sq. m)
- ⑨ Transit area (4 sq. m)

- 1. Yoga mat
- 2. Coffee table
- 3. Shelving for storing mats
- 4. Luchino Sofa
- 5. Entre Coeur Armchair
- 6. Kitchen countertop
- 7. Bar counter
- 8. Muuto Cover Armchair bar stool
- 9. Muuto Cover Armchair
- 10. Sansara Daybed



First floor plan

- ① Master bedroom (20 sq. m)
- ② Transit zone (24 sq. m)
- ③ Guest bedroom (20 sq.m)
- ④ Guest bathroom (8 sq. m)
- ⑤ Main bathroom (8 sq. m)
- ⑥ Balcony (30 sq. m)
- ⑦ Study room (70 sq.m.)

- 1. Art object "Mineral"
- 2. Coffee table
- 3. Racks for storing minerals and samples
- 4. Outline Sofa
- 5. Entre Coeur Armchair
- 6. Desk
- 7. Sansara Daybed Pouf
- 8. Shelf Chess Cupboard
- 9. Muuto Cover Armchair
- 10. Rondo Bed
- 11. Ale Bedside Table

The **homeowner works at the intersection of traditional lithotherapy practices** (the use of minerals to influence energy centers) **and a scientific approach to crystallography and mineralogy.** The **house is divided into two sections:** to the left of the main entrance, in **the residential southern section**, are the kitchen-living room, the master bedroom, and the guest bedroom; to the right of the entrance, in **the northern professional section**, the ground floor houses a room for yoga and lithotherapy practices, while the first floor features a workshop equipped with shelving and a desk for working with minerals.



Interior visualisation of a workshop studio for working with mineral specimens on the First floor. The panoramic windows offer a view of the mountain valley.