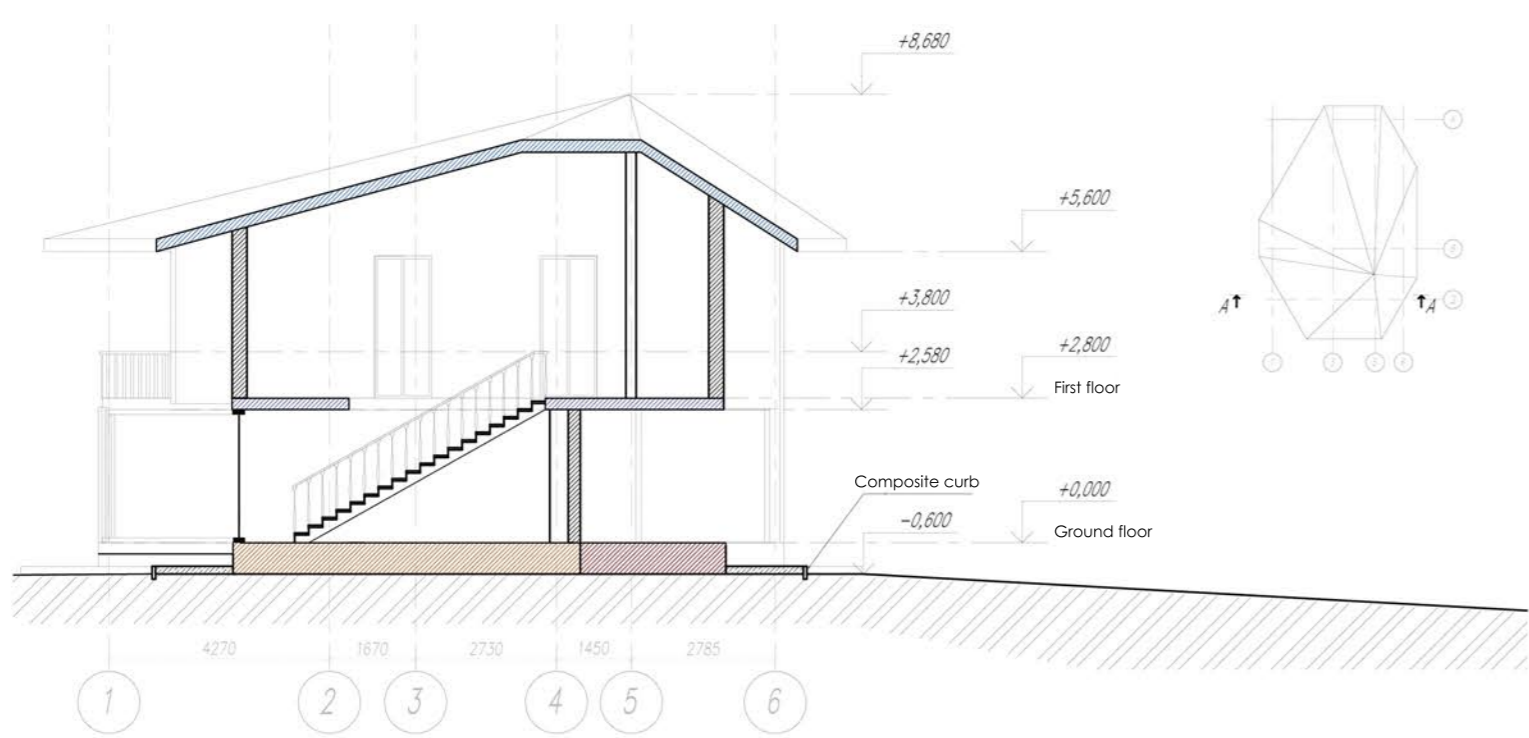
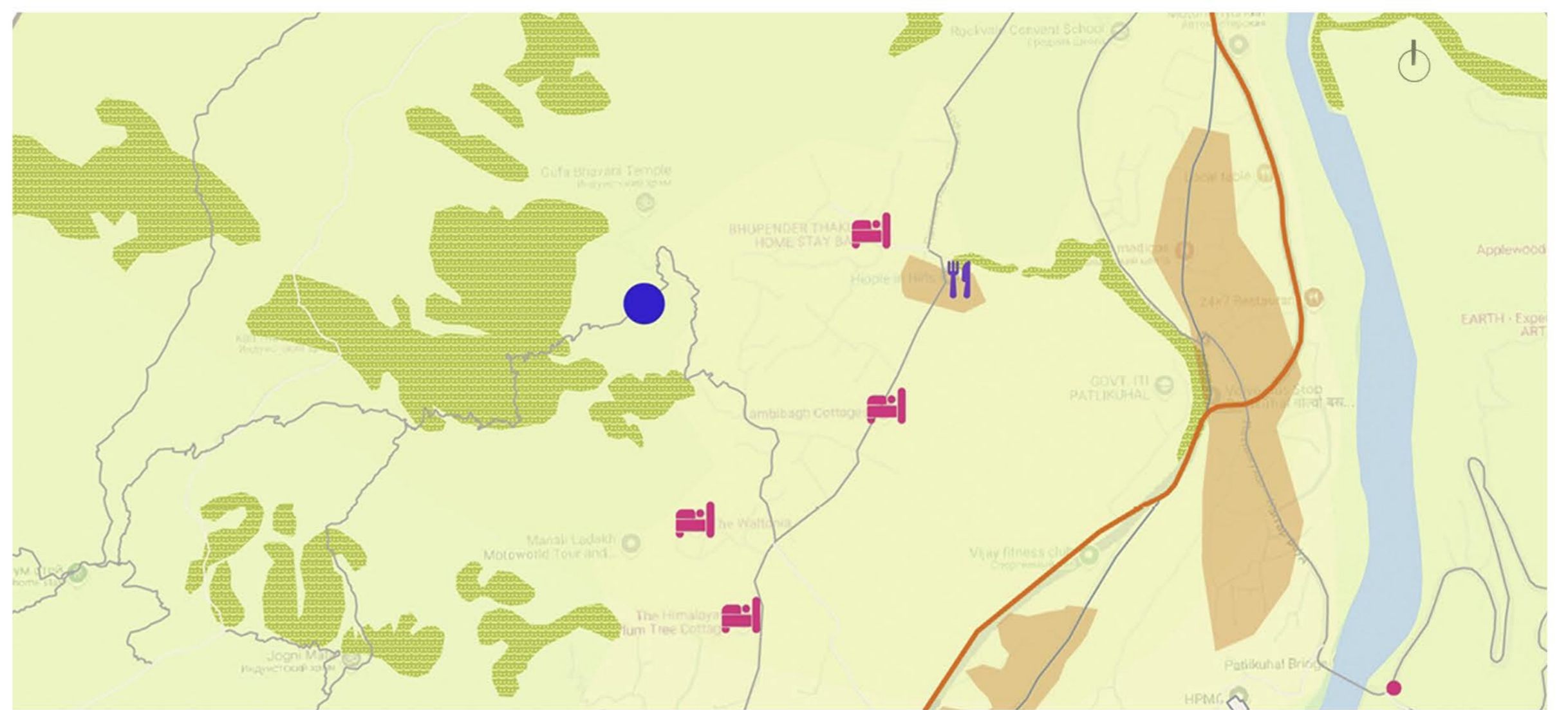


A mineralogist's house in the Himalayan mountains

The owners' fascination with mineralogy inspired the creation of a unique, crystalline roof shape that defined the composition and design of the entire house. It was constructed using traditional local materials, responding to the climate, and reflecting the local spirit.



Section A-A



Location plan



West Elevation



Transport connection map



Exterior visualisation

Facade materials:

- 1. Local limestone finish
- 2. Himalayan pine
- 3. Traditional clay tiles

- 4. Ceramic tiles
- 5. Glass

Himachal Pradesh is a state in northern India, straddling the Himalayan mountain range. It is famous for its picturesque mountain towns and resorts, among which Dalhousie is particularly famous. It is also home to the **crystallography department at the Indian Institute of Technology Mandi, which links the homeowner to her profession — mineralogy.**



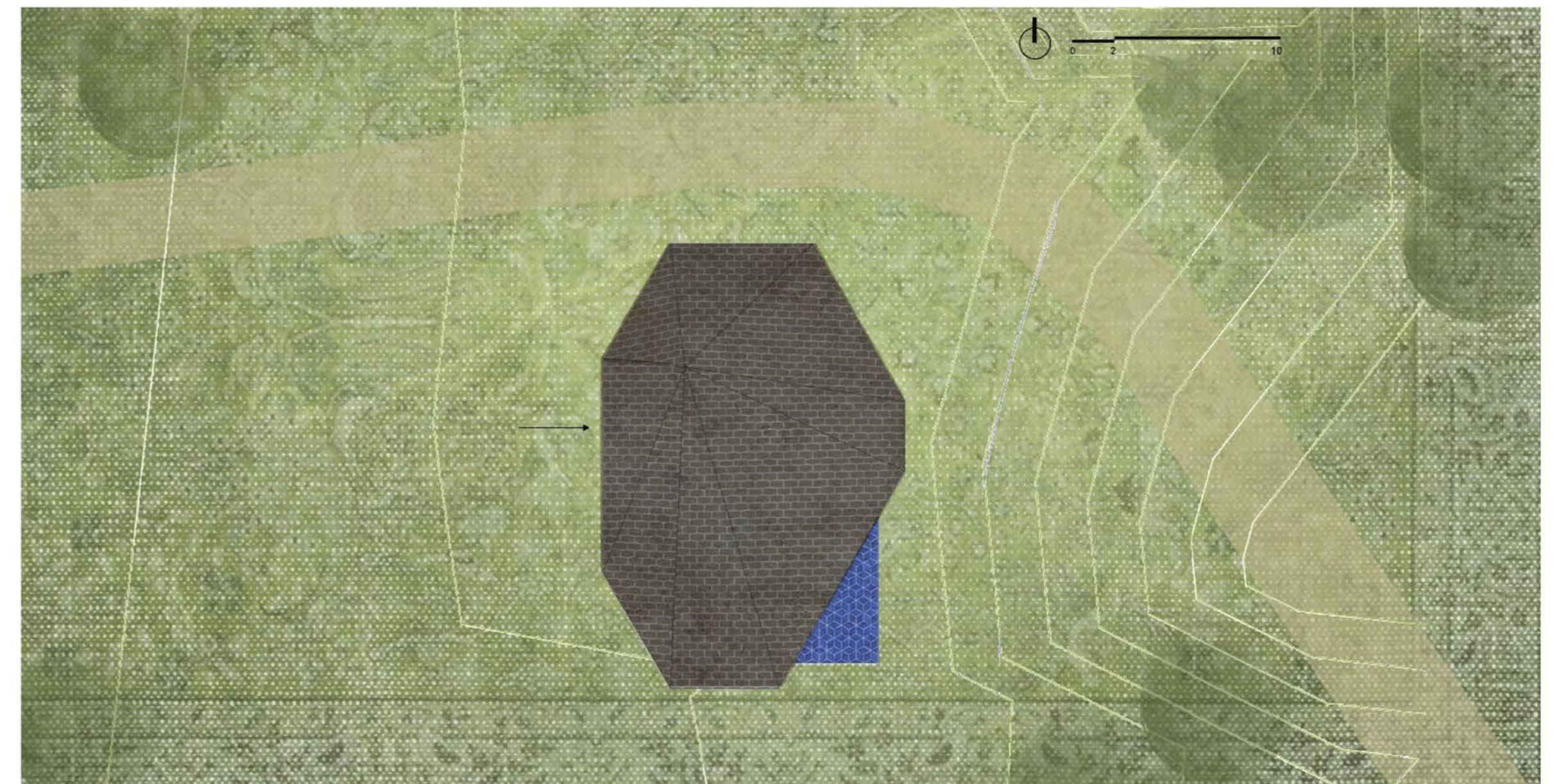
North Elevation



South Elevation



East Elevation



Site plan