

BAMBOO INDUSTRY IN THE PHILIPPINES

The bamboo industry in the Philippines plays a dual role in **ecological rehabilitation and economic development**. Supported by national policies such as the Philippine Development Plan (2023–2028) and the Philippine Bamboo Industry Development Roadmap, bamboo plantations now span thousands of hectares nationwide, with major production concentrated in the Ilocos Region

THE ILOCOS REGION

As the country's leading bamboo-producing region, the Ilocos Region supports its growing industry through only **four training institutions** that provide training in bamboo production, processing, weaving, and enterprise development

● Training Institutions

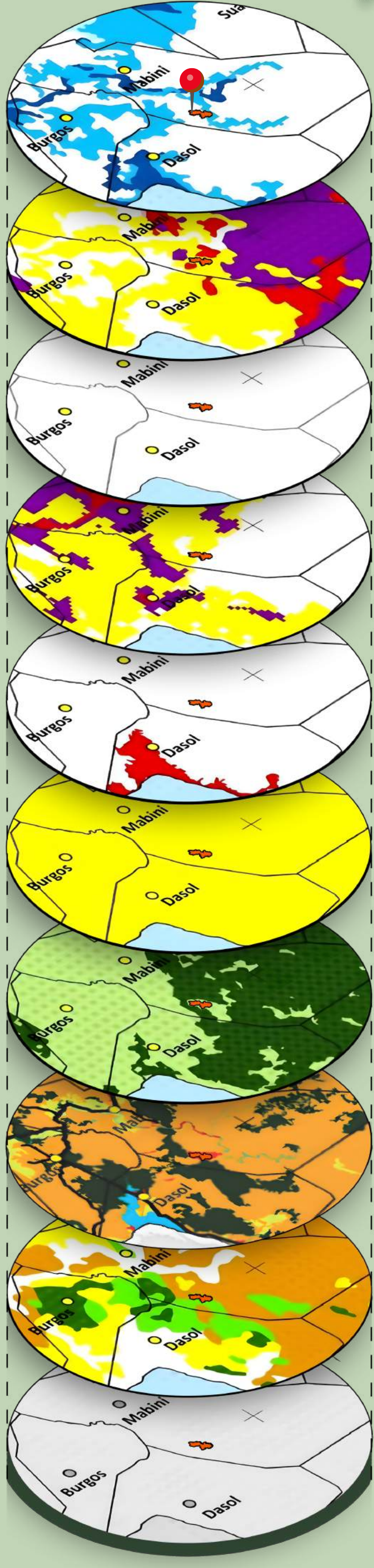
PANGASINAN

Pangasinan, the leading bamboo-producing province, has established **extensive bamboo plantations** across numerous municipalities, including Mabini, which primarily cultivate bamboo for value-added industries.

Legend: (Bamboo Plantation)

- 300 ha. - 349 ha.
- 250 ha. - 299 ha.
- 200 ha. - 249 ha.
- 100 ha. - 149 ha.

THE SAWALI MAKER OF MABINI, PANGASINAN



FLOOD SUSCEPTIBILITY

According to the latest PDPFP of Pangasinan, the site is under "none or no susceptibility to flooding."

RAIN-INDUCED LANDSLIDE

Being in an upland area, the site exhibits "low susceptibility" status to rain-induced landslide.

FAULT ZONE

The Mabini Municipality has no records of ground shaking casualties as the Philippine fault line does not traverse the municipality.

LIQUEFACTION

The site is under "low exceedance for liquefaction," which means that the probability of liquefaction in the site is low.

TSUNAMI

There are no recorded incidents of tsunami in the municipality; however Mabini is predicted to be affected in the worst-case scenario earthquake map of PHIVOLCS.

GROUNDSHAKING

The province has no ground shaking records in the past; however it is under PEIS Level 7 in the worst-case scenario prediction of PHILVOCS, which assumes severe damage.

LAND CLASSIFICATION

As shown in the map beside, the site is under "Alienable and Disposable Land."

LAND USE

The Pangasinan PDPFP classified Barlo Mines as a "miscellaneous area," which means it could be use for open space, built-up areas, etc.

SLOPE

Being at the entrance of the southern portion of Mabini, the site is under "mountainous and hilly topography" of the municipality.

THE SITE

The site is located in the western portion of Mabini, specifically under the jurisdiction of Brgy. Barlo, hence its name.

SITE ANALYSIS

NEARBY BAMBOO ENTERPRISES



MACRO SITE ANALYSIS



NEARBY BAMBOO-RELATED ASSOCIATIONS



ROAD NETWORK:

- NATIONAL ROAD
- PROVINCIAL ROAD
- MUNICIPAL/CITY ROAD

PANGASINAN 1ST DISTRICT

Pangasinan, a key gateway to Northern Luzon with 44 municipalities and 4 cities, combines an extensive road network with a thriving bamboo industry, particularly in the 1st District, where plantations and enterprises produce furniture, handicrafts, and construction materials, making the province a top bamboo producer in the Philippines.

MICRO SITE ANALYSIS

MUNICIPALITY OF MABINI

Mabini, a second-class municipality in the 1st district, is a landlocked town in the western Pangasinan known for its rich natural resources, agricultural productivity, and cultural heritage.

- TOURIST SPOT
- ACCOMMODATIONS
- NEARBY GOVT. SERVICES



NEARBY SCHOOLS



ABANDONED BARLO MINING SITE

The abandoned Barlo Mining Site, featuring disturbed and barren land, spans approximately 167 hectares, and is divided among forty landowners

- Government goal of planting bamboo in the site
- Prolong abandonment may cause delay in the project
- The training can create opportunities for the host and neighboring communities.
- Climate-related hazards such as heavy rainfall and typhoons may alter the condition of the site.

BRGY. BARLO

Barangay Barlo is a sparsely populated community which is known for its traditional local livelihood such as sawali making, charcoal making, and farming.

NEARBY SOCIAL FACILITIES