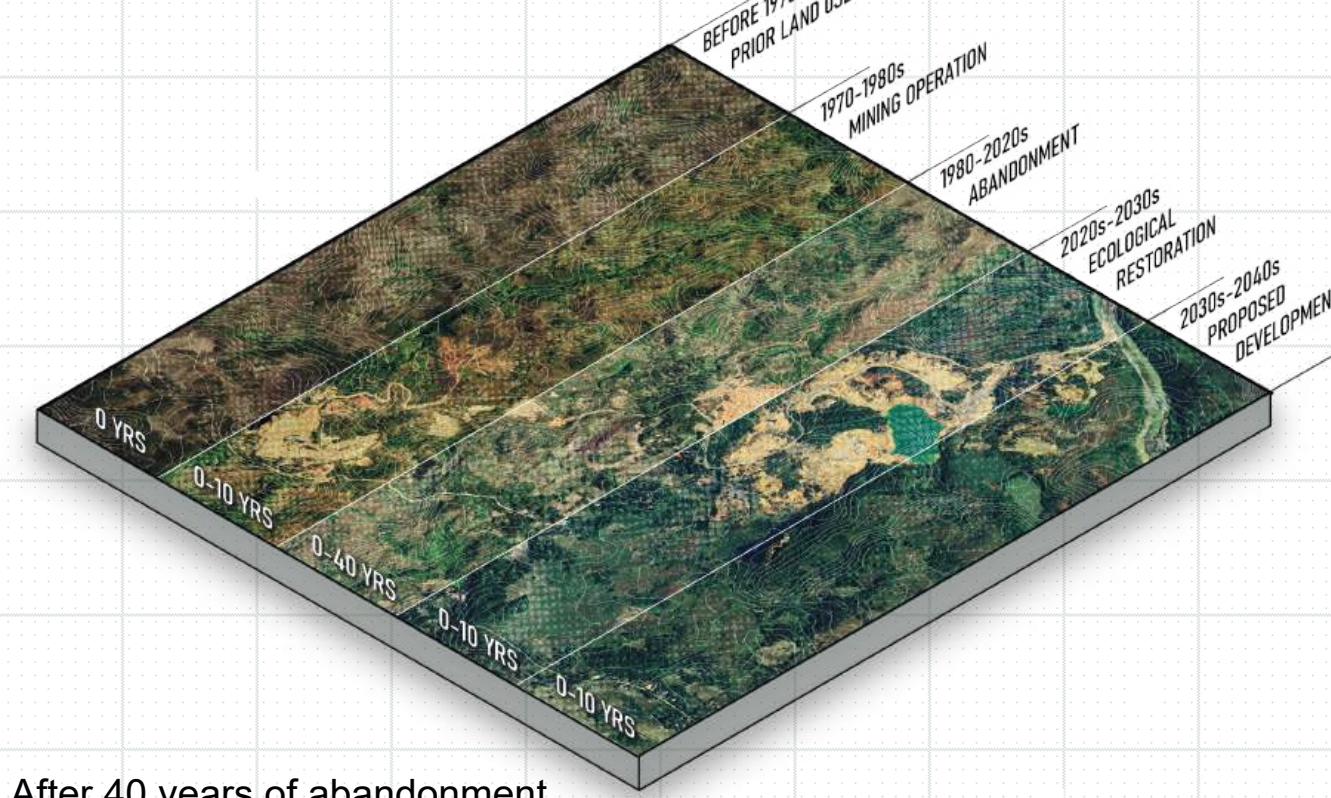


## BARLO MINES PIT LAKE



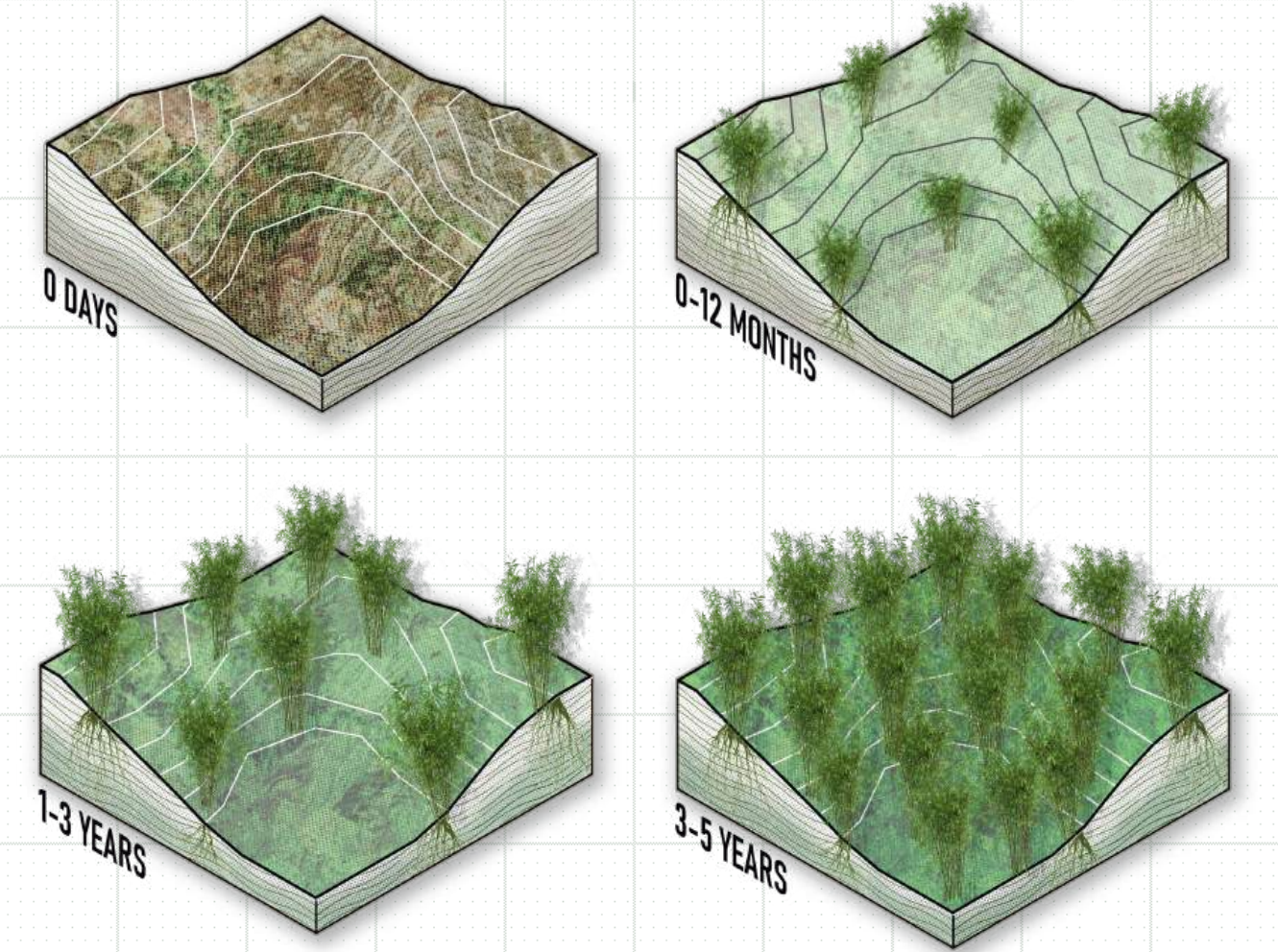
## SITE PROGRESSION MAP

### ECOLOGICAL RESTORATION



After 40 years of abandonment, the DENR-MGB is tasked to ecologically restore the abandoned mining sites.

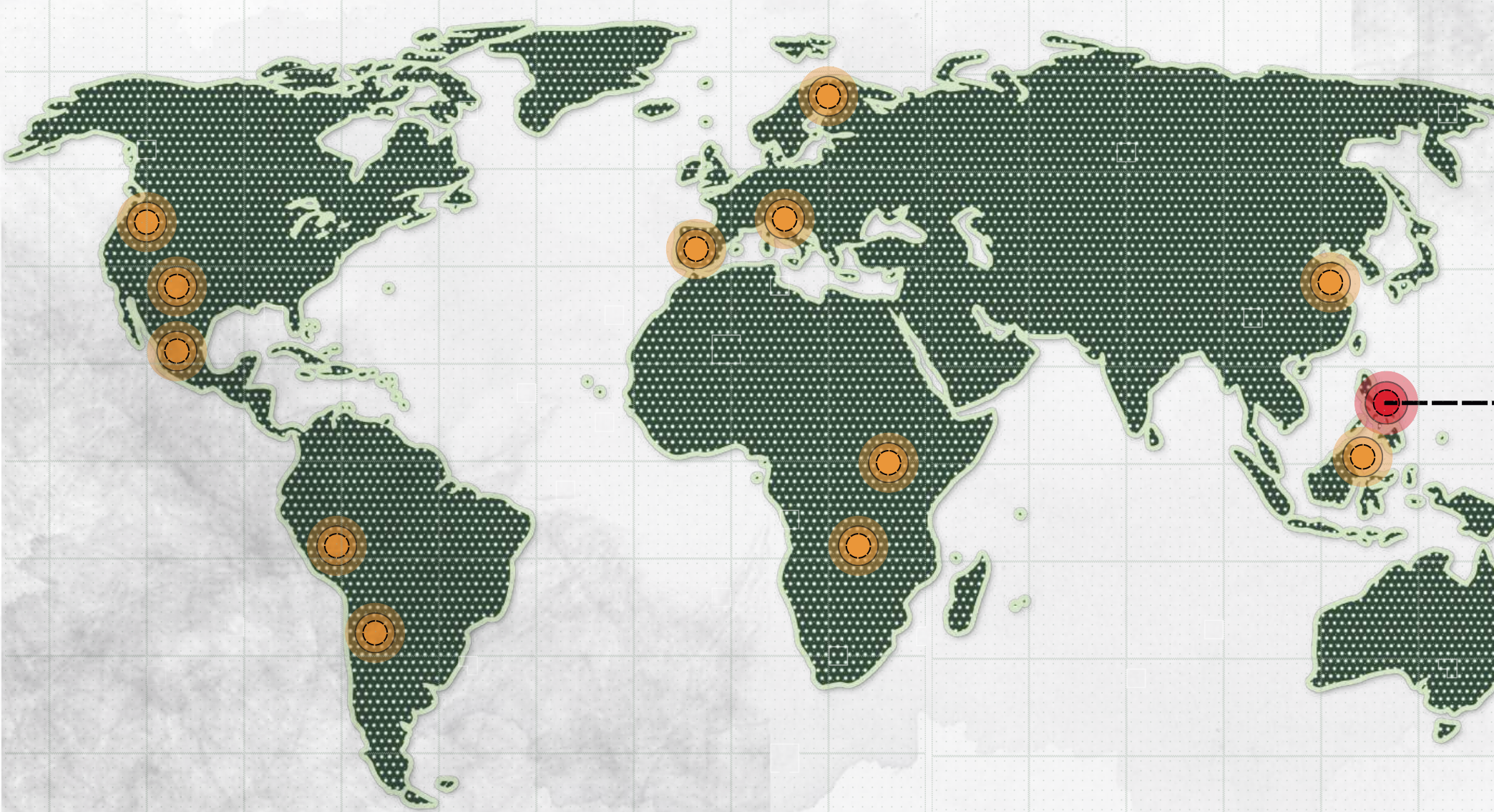
### BAMBOO PROGRESSION



## CARBON SEQUESTRATION

Bamboo is a highly effective carbon sequestration plant, capable of absorbing up to 50-60 tons of CO<sub>2</sub> per hectare annually, often exceeding many tree species. Its rapid growth and short maturity cycle of 3-5 years enable continuous carbon capture. Therefore, bamboo plays a big role in land restoration and climate mitigation.

## ABANDONED COPPER MINES



The global history of mining has played a crucial role in the economic development of countries endowed with rich mineral resources, particularly copper which is valued for its uses. However, when minerals are extracted, mining sites are often left abandoned.

This global issue is evident in the Philippines which reported a total of 22 abandoned mines in 2001, reduced to nine in 2025 through a series of rehabilitation efforts.

## ABANDONED MINES IN THE PHILIPPINES

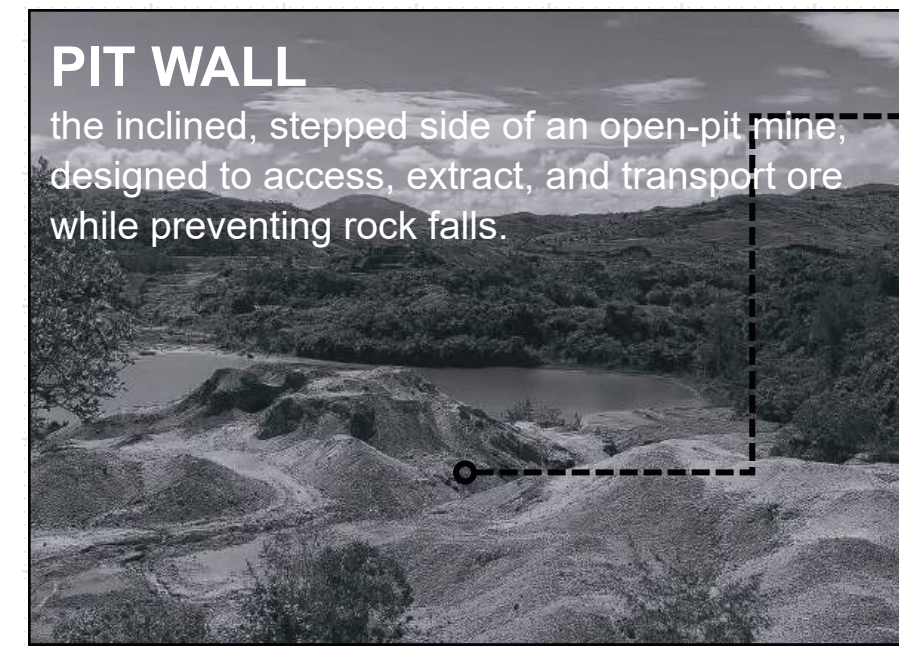
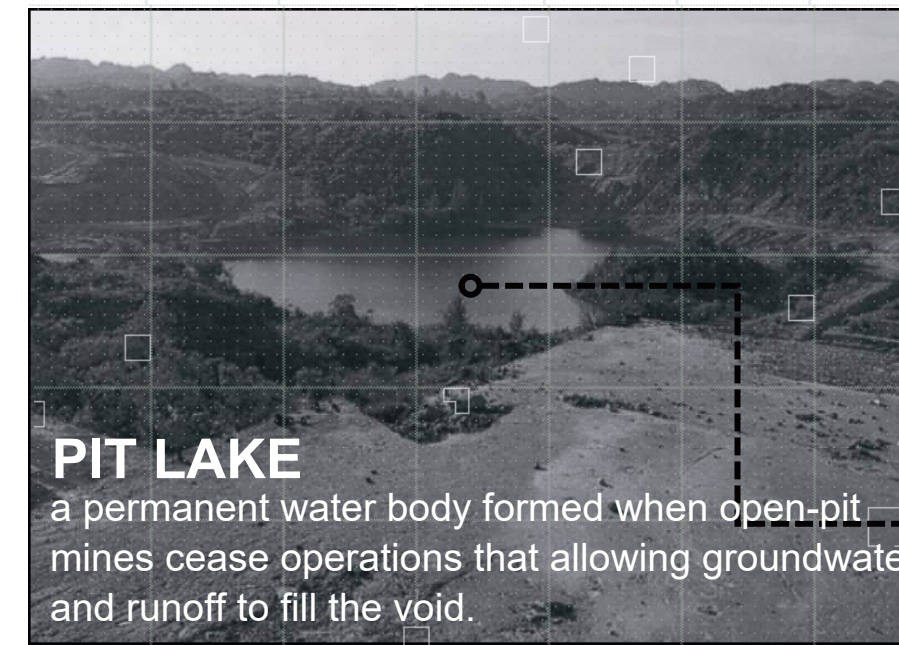
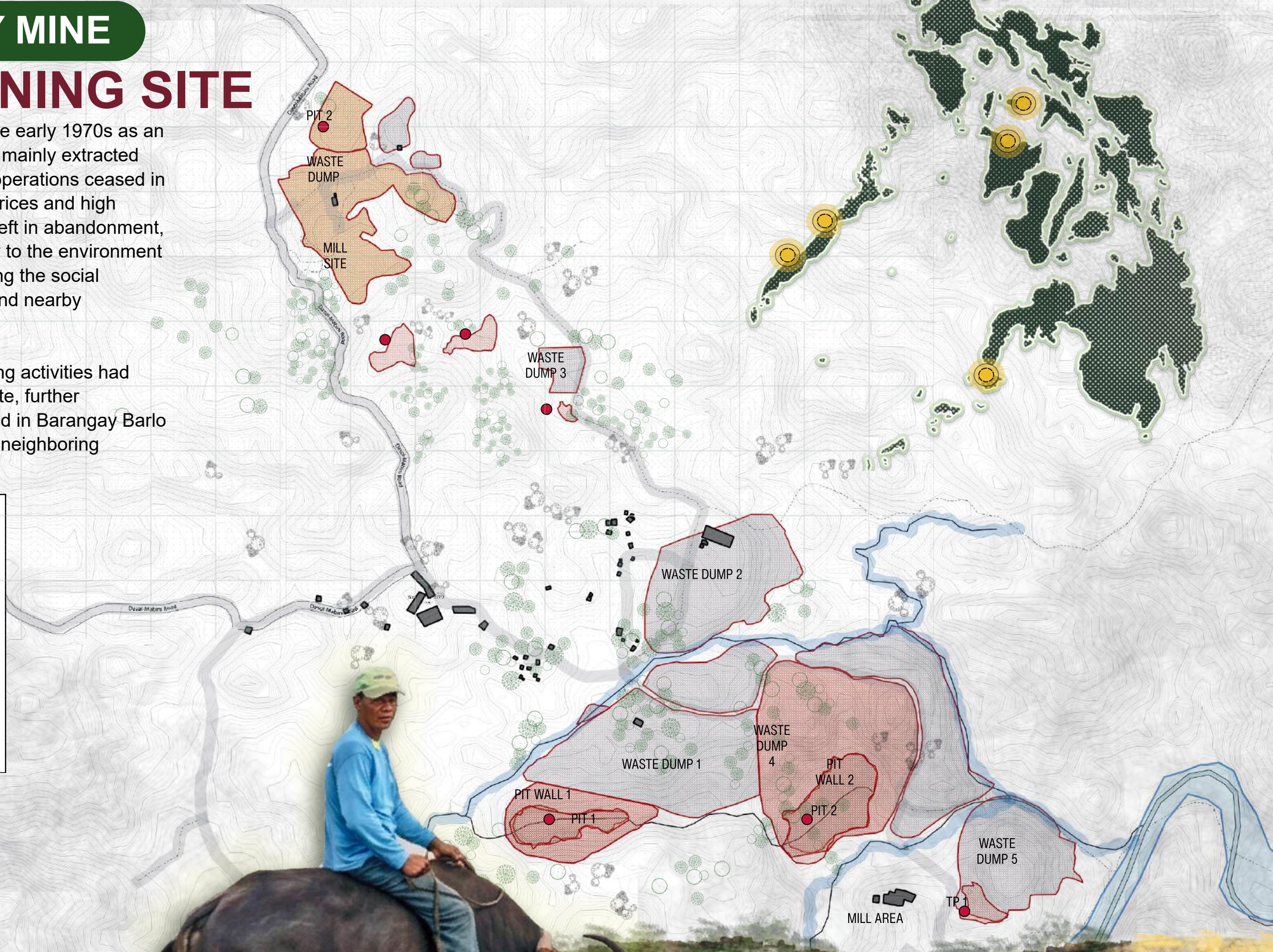
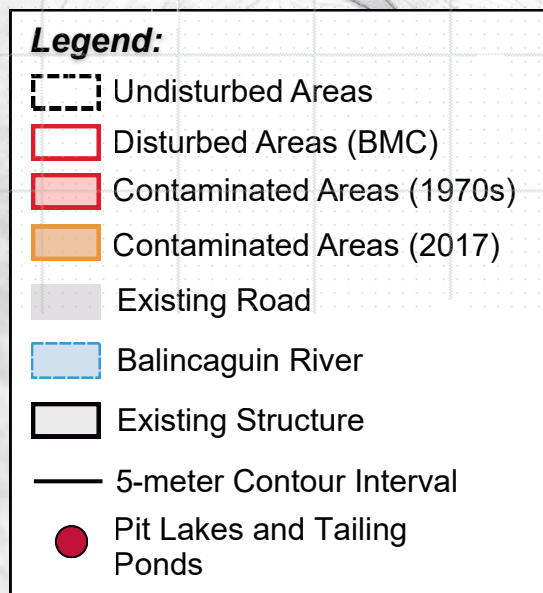
MABINI, PANGASINAN, ILOCOS NORTE

## THE LEGACY MINE

### BARLO MINING SITE

Barlo Mines was operated in the early 1970s as an underground mining site which mainly extracted copper ores. However, when operations ceased in 1983 due to declining copper prices and high production costs, the site was left in abandonment, posing significant risks not only to the environment and human health, but impacting the social conditions of Barangay Barlo and nearby communities.

By 2017, additional illegal mining activities had occurred at the Barlo Mining Site, further increasing the extent of idle land in Barangay Barlo in Mabini Municipalities and its neighboring communities.



**20ha.** of bamboo plantation to be planted in the site.  
 this equates to a total area of **1,305ha.** CO<sub>2</sub> sequestration (t/y)

## REMNANTS OF BARLO MINES

