

REHAB & REHOME

A HOLISTIC WELL-BEING SPACE FOR RESCUED CATS & DOGS

URBAN PROBLEM

INJURED, ABANDONED, AND VULNERABLE CATS AND DOGS ARE VISIBLE IN THE CITY, YET RARELY INCLUDED IN ITS SPATIAL PLANNING. MANY RESCUED ANIMALS NEED MORE THAN TEMPORARY SHELTER; THEY REQUIRE MEDICAL CARE, RECOVERY, SOCIALIZATION, AND A SAFE PATH TOWARD ADOPTION OR RE-RELEASE.



INJURY



ABANDONMENT



VULNERABLE

AIM

To design a holistic rehabilitation and adoption center for rescued cats and dogs, providing medical care, therapy, and a safe space for adoption or re-release.



REHABILITATION CENTER



ADOPTION SERVICES



PET THERAPY



COMMUNITY AWARENESS



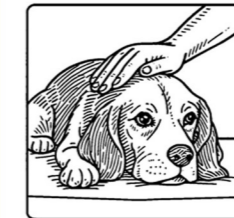
SUSTAINABILITY AND WELL-BEING

KEY QUESTION

How can architecture support RESCUE, REHABILITATION, ADOPTION, AND RE-RELEASE of vulnerable cats and dogs within an urban setting?



Rehab (Rehabilitation)



Physical and emotional healing through medical care, therapy, and socialization to help



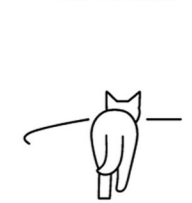
Rehome (Rehoming)



Finding a permanent home through adoption, ensuring a lifelong bond



Re-release



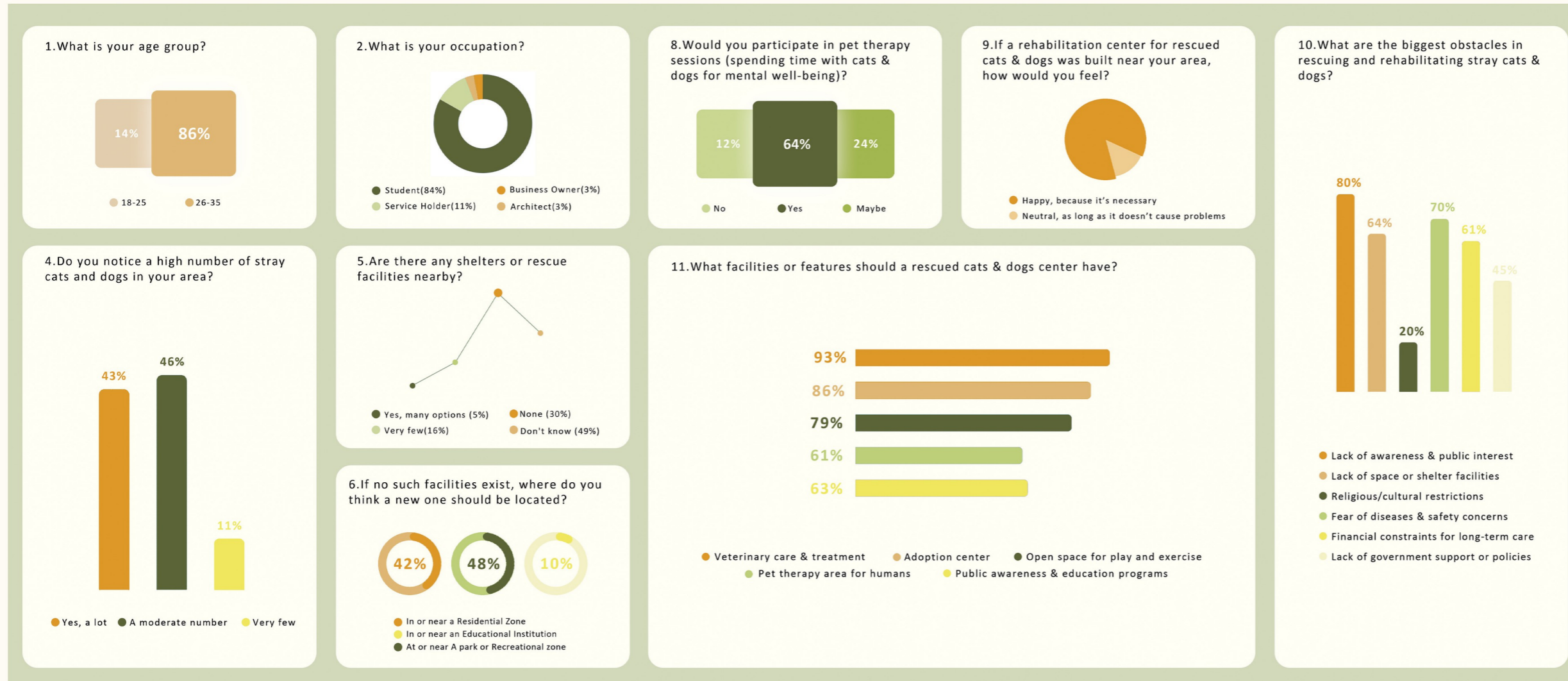
Returning rehabilitated strays back to their natural environment if they are capable of adapting

ARCHITECTURE AS A BRIDGE BETWEEN HUMAN RESPONSIBILITY AND ANIMAL VULNERABILITY.



FROM CONCERN TO CARE

PUBLIC RESPONSE: 95 SURVEY PARTICIPANTS



Transport systems are essential

Availability of **medical equipment**

Education can help people understand animal needs

Immediate **care**, proper **nutrition**, and **socialization** support recovery

Start with **less busy areas**, then expand

A **pet hostel** could offer **temporary care** and help raise funds for rescued animals

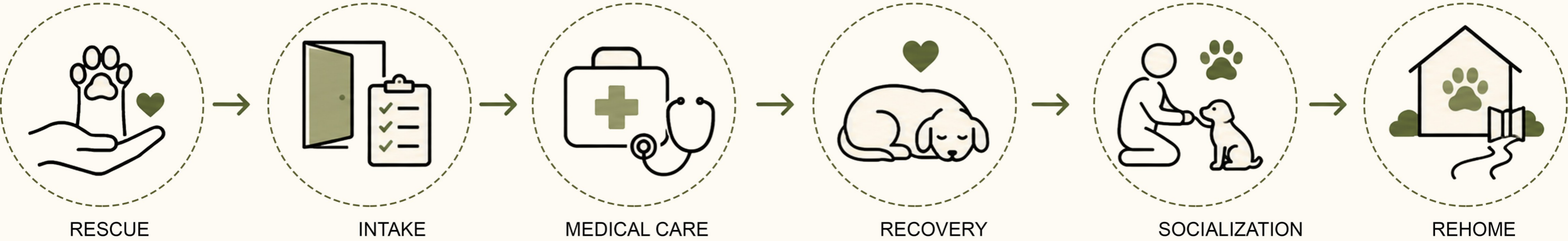
COMMUNITY CONCERNS

FROM RESPONSE TO DESIGN



SURVEY → NEED → SPATIAL STRATEGY → DESIGN PROGRAM

FROM SHELTER TO CARE



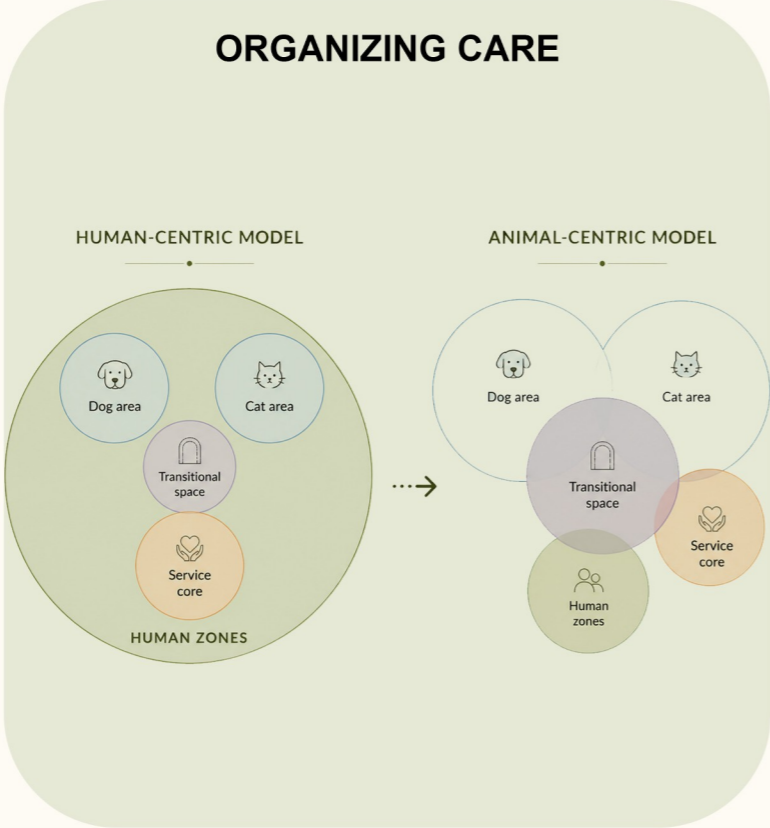
SHIFTING THE USER

HUMAN-CENTRIC architecture as a service building

↓

ANIMAL-CENTRIC architecture shaped by behaviour, safety, and recovery

The project shifts from a conventional shelter model toward an animal-centred care system. Cats and dogs become primary users whose movement, stress, hygiene, and social behaviour shape the spatial arrangement.

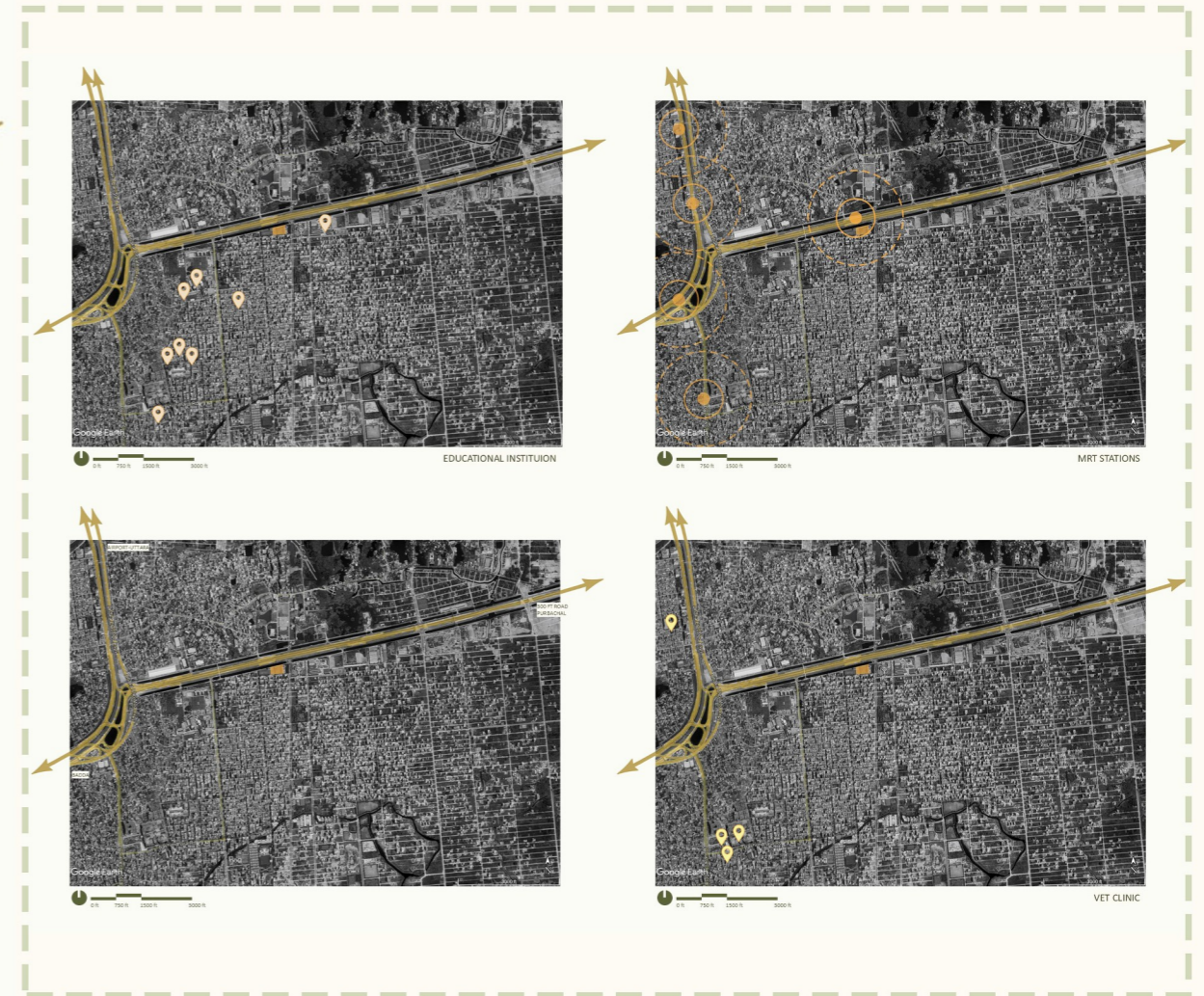
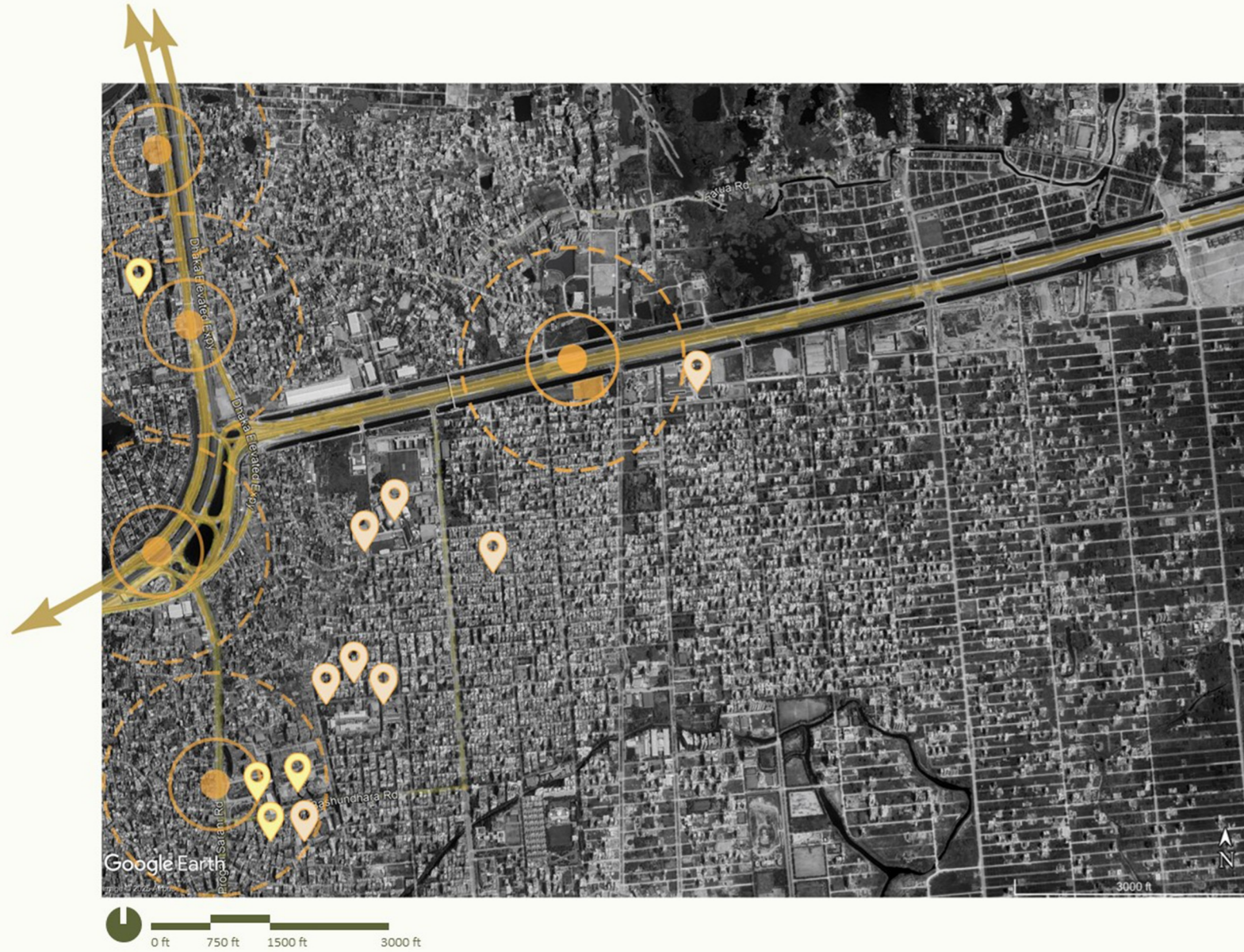


CARE IS PLANNED AS A SEQUENCE, NOT A SINGLE SHELTER SPACE



A SITE FOR GENTLE TRANSITION

SELECTED SITE: BASHUNDHARA RESIDENTIAL AREA | 1.89 ACRE



SITE SELECTION CRITERIA



PRIMARY AND SECONDARY ROADS



100 FT LAKE



PARK



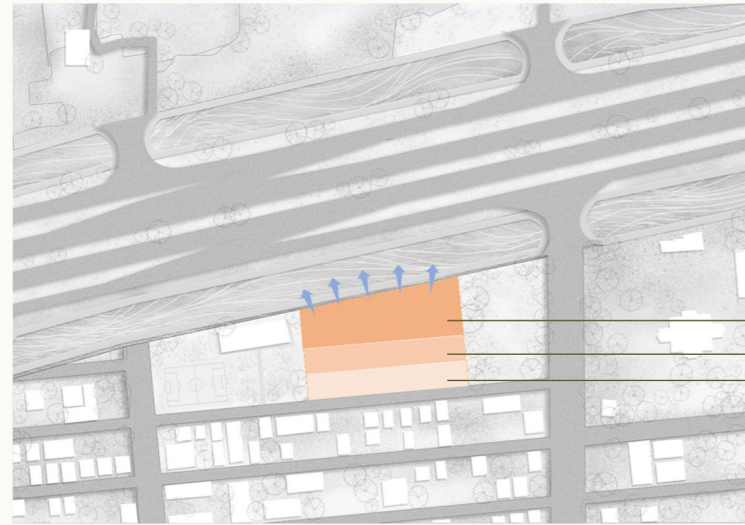
FOOTBALL CLUB

FROM ZONES TO PLAN

TRANSLATING PUBLIC, PRIVATE, AND SPECIES-SPECIFIC CARE INTO THE FLOOR ORGANIZATION

ZONING STRATEGY

PUBLIC → SEMI-PUBLIC → PRIVATE



PRIVATE
SEMI-PUBLIC
PUBLIC

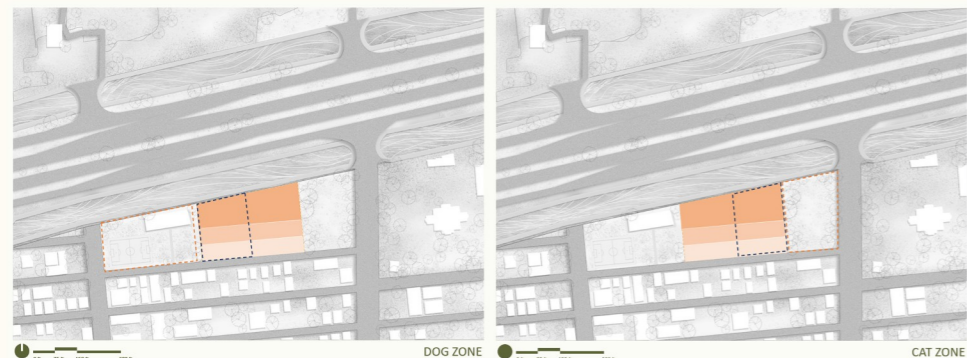
0m 75m 150m 300m

PUBLIC ZONE
PLACED NEAR THE MAIN ENTRY TO MAKE RECEPTION, ADOPTION SUPPORT, CAFÉ, AND AWARENESS SPACES EASILY ACCESSIBLE TO VISITORS. THIS ALLOWS THE PROJECT TO ENGAGE THE COMMUNITY WITHOUT DISTURBING THE ANIMALS' RECOVERY AREAS.

SEMI-PUBLIC ZONE
POSITIONED AS A BUFFER BETWEEN PUBLIC ARRIVAL AND PRIVATE CARE SPACES. MEET-AND-GREET ROOMS, THERAPY AREAS, AND CONTROLLED INTERACTION ZONES ALLOW GRADUAL HUMAN-ANIMAL CONTACT UNDER SUPERVISION.

PRIVATE ZONE
LOCATED DEEPER WITHIN THE SITE TO PROTECT VETERINARY CARE, QUARANTINE, SHELTER, STAFF, AND RECOVERY FUNCTIONS. THIS REDUCES NOISE, LIMITS UNCONTROLLED ACCESS, AND SUPPORTS HYGIENE AND STRESS-FREE REHABILITATION.

SPECIES SEPARATION



DOG ZONE

CAT ZONE

CAT AND DOG ZONES ARE SEPARATED BECAUSE THEIR BEHAVIOR, MOVEMENT, SOUND TOLERANCE, AND RECOVERY NEEDS ARE DIFFERENT. THE CAT ZONE IS ORIENTED TOWARD THE QUIETER PARK SIDE TO SUPPORT CALM OBSERVATION, HIDING, AND LOW-STRESS RECOVERY. THE DOG ZONE IS PLACED TOWARD THE PLAYGROUND/ACTIVITY SIDE, WHERE MOVEMENT, EXERCISE, AND OUTDOOR SOCIALIZATION CAN BE BETTER SUPPORTED.

GROUND FLOOR PLAN

The ground floor is organized as a gradual transition from public awareness to controlled interaction and protected recovery.

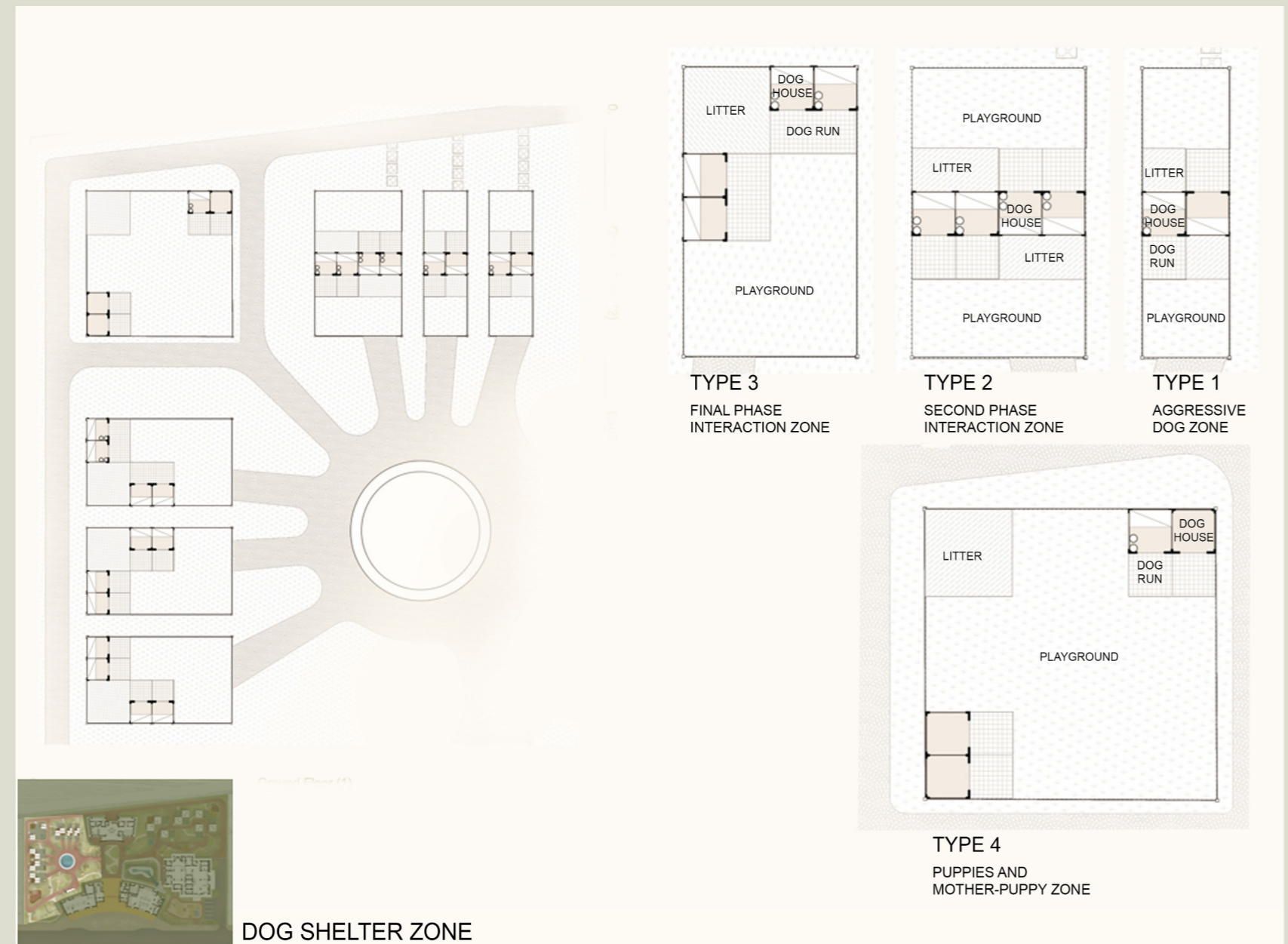


GROUND FLOOR PLAN

THE GROUND FLOOR TRANSLATES THE ZONING STRATEGY INTO AN OPERATIONAL CARE SEQUENCE. PUBLIC FUNCTIONS ARE PLACED NEAR THE MAIN ENTRY FOR EASY VISITOR ACCESS, WHILE MEDICAL, SHELTER, AND SERVICE FUNCTIONS ARE ORGANIZED WITH CONTROLLED MOVEMENT TO REDUCE STRESS AND MAINTAIN HYGIENE.

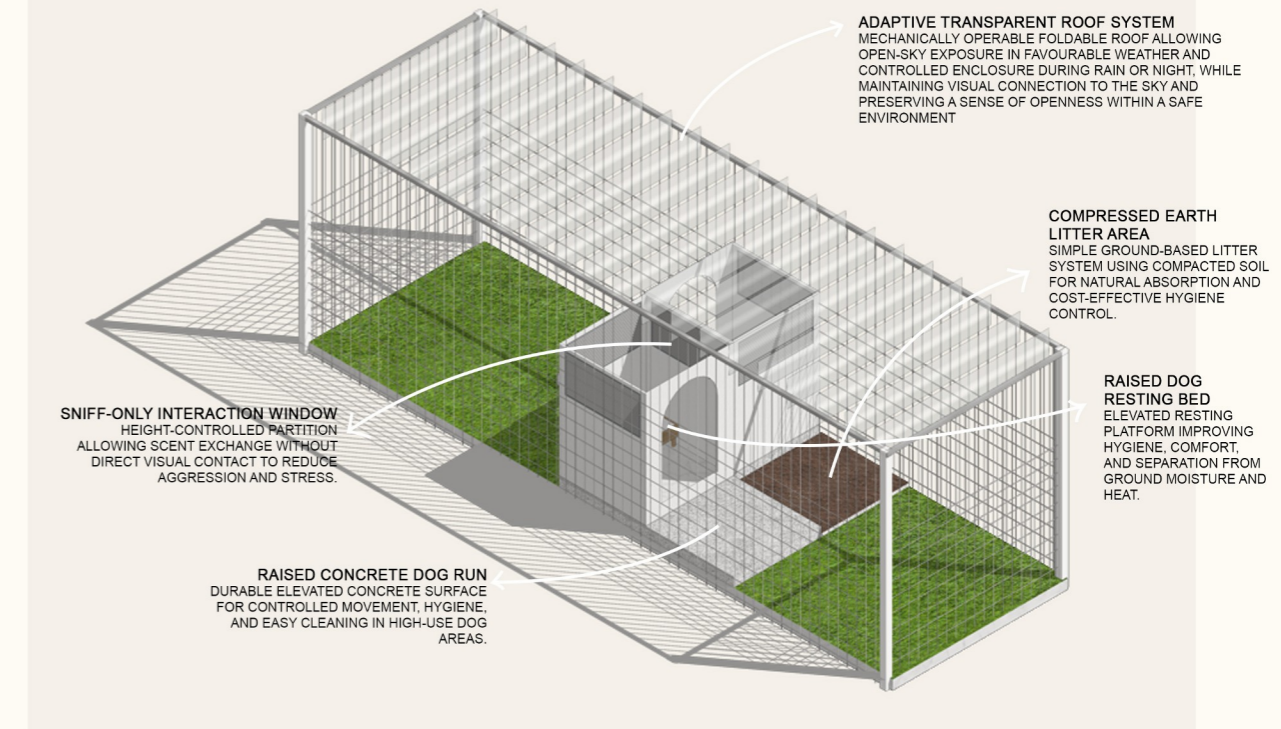
DOG REHABILITATION SYSTEM

Dog rehabilitation requires movement, separation, and gradual exposure. The shelter system separates dogs by temperament, age, and recovery stage while providing outdoor activity, shaded areas, and phased interaction zones.



The dog enclosure section uses a partial-height solid divider to allow scent exchange while limiting direct eye contact. Dogs rely strongly on smell to understand nearby animals, so controlled sniffing helps them recognize presence without immediate confrontation. The lower solid portion blocks full visual exposure and reduces barking, territorial stress, and aggressive response, while the upper open or ventilated part maintains airflow, supervision, and environmental comfort. This creates a calmer transition between separation and socialization.

MODULE 3D VIEW



DOG PLAYGROUND

The dog play area is designed for movement, exploration, and supervised socialization. The colour palette uses soft blue-yellow and earthy tones, responding to the way dogs perceive contrast and open space. Shaded zones, textured ground, and clear visual boundaries help reduce overstimulation while supporting running, sniffing, resting, and gradual interaction.



Isolation → Observation → Exercise → Socialization → Adoption / Re-release
 type 1 type 2 type 3

CAT REHABILITATION SYSTEM

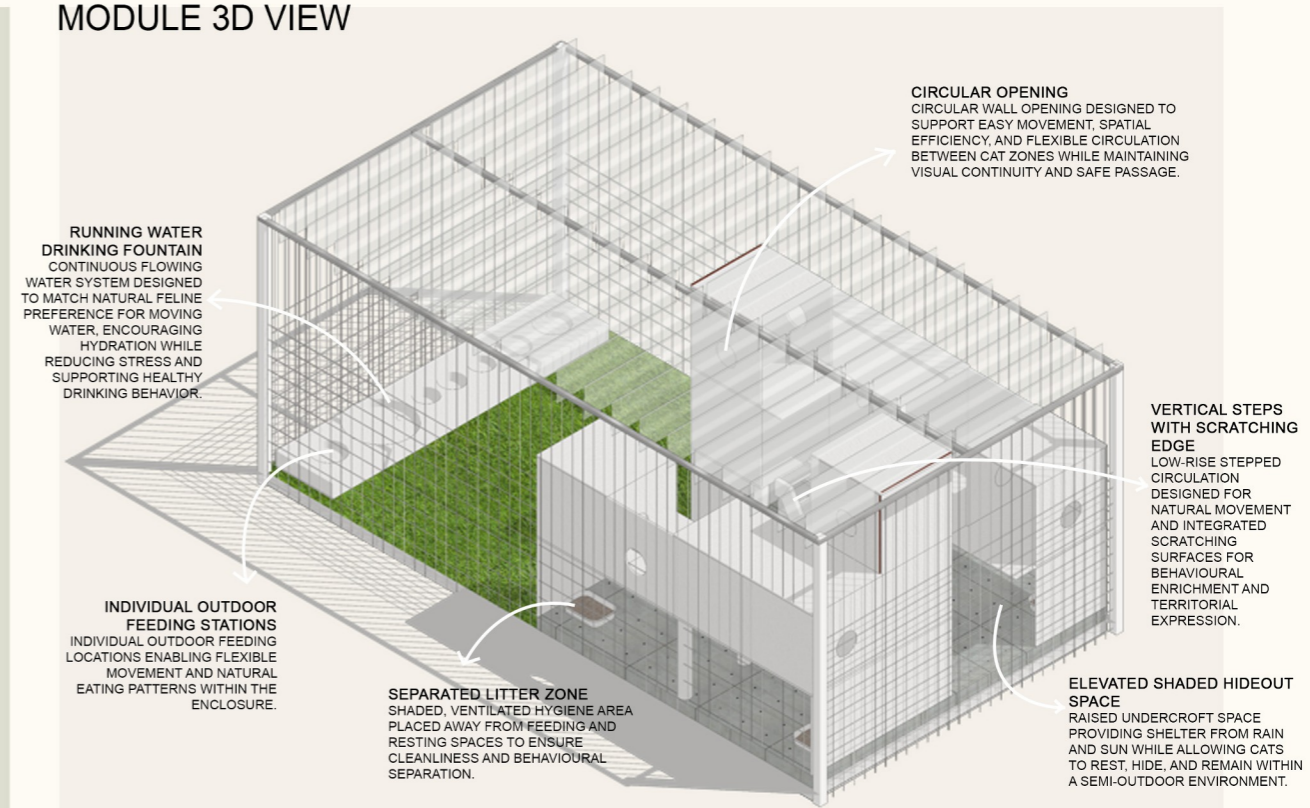
Cat rehabilitation depends on calmness, privacy, vertical movement, and controlled contact. The shelter zone is organized to separate cats by condition, temperament, age, and recovery stage, allowing each animal to move gradually from protection toward social interaction.



The colour palette is chosen from the animal's visual comfort rather than human decoration. Softer greens, blues, and earthy tones create contrast without overstimulation, helping define resting edges, climbing elements, shaded areas, and safe movement paths.

Safety → Observation → Trust → Adoption / Re-release
 type 1 type 2

MODULE 3D VIEW



CAT PLAYGROUND

The cat outdoor enclosure is designed as a quieter sensory landscape. Muted greens, soft blues, and warm neutral tones are used to create a calm environment for observation, hiding, climbing, and slow social contact. Vertical elements, shaded corners, and controlled views allow cats to feel secure while still engaging with the outdoor setting.



PUBLIC FUNCTIONS

WHERE PUBLIC AWARENESS TURNS INTO CONTROLLED HUMAN-ANIMAL INTERACTION

GROUND FLOOR PLAN



FIRST FLOOR PLAN



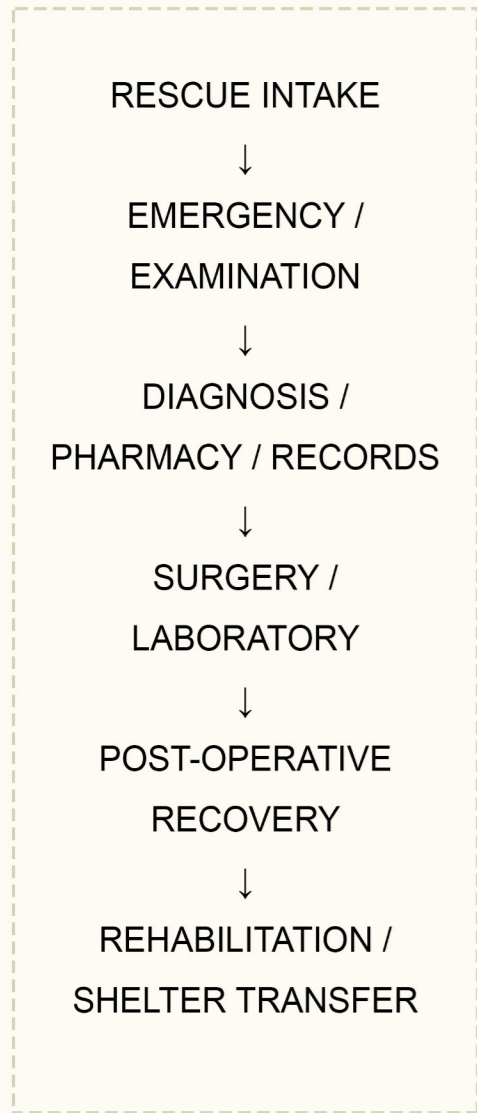
PUBLIC FUNCTIONS AS A SUPPORT ECOSYSTEM

The public functions are designed to extend animal welfare beyond rescue and rehabilitation. The ground floor accommodates a cat cafe, pet accessories shop, and reception area, creating an accessible interface between the shelter and the community. Visitors without pets can spend time with animals in a supervised environment, while existing pet owners can engage with the shelter through everyday activities and services. The first floor introduces cat and dog foster hotels, providing temporary boarding facilities for pet owners while strengthening the relationship between the public and the center. As individuals who already live with animals often demonstrate greater awareness of animal welfare, these spaces encourage continued participation, volunteerism, and charitable support. The cat cafe is conceived as an open-plan environment where cats and visitors share the same space without rigid separation. This allows natural interaction, helping visitors experience animal companionship while enabling cats to socialize in a low-stress setting. Together, these functions generate supplementary revenue for shelter operations while creating a broader culture of empathy, awareness, and community responsibility toward rescued animals.

VETERINARY AND RECOVERY CARE

FROM RESCUE INTAKE TO TREATMENT, SURGERY, AND POST-OPERATIVE HEALING

THE VETERINARY BLOCK FORMS THE CLINICAL STARTING POINT OF THE CARE SEQUENCE. ANIMALS ARE ASSESSED, TREATED, AND STABILIZED BEFORE ENTERING REHABILITATION, SHELTER, ADOPTION, OR RE-RELEASE PATHWAYS.



GROUND FLOOR PLAN

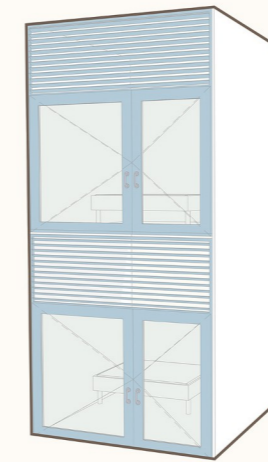


POST-OPERATIVE CARE MODULE

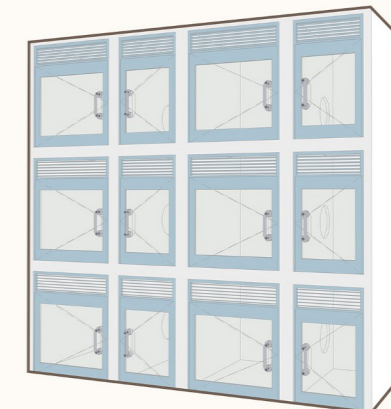
The post operative module provides a quiet, temperature controlled recovery area after treatment or surgery. Dog and cat recovery spaces are separated to reduce stress, avoid conflict and noise exposure. The module supports observation, rest, controlled movement, and gradual transfer toward rehabilitation or shelter.

Design considerations

- Quiet recovery
- Species separation
- Non-slip floor
- Easy-clean surfaces
- Controlled ventilation
- Low-stress observation



DOG'S SPACE

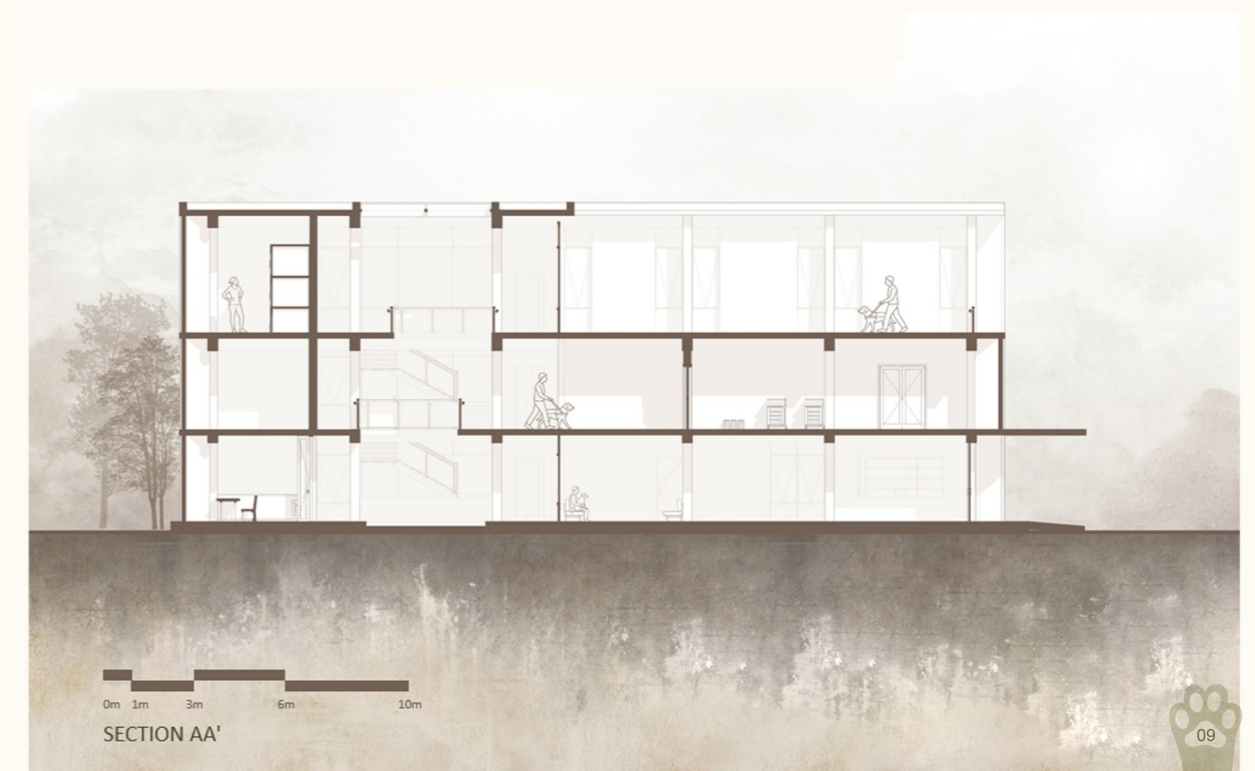


CAT'S SPACE

FIRST FLOOR PLAN



SECOND FLOOR PLAN



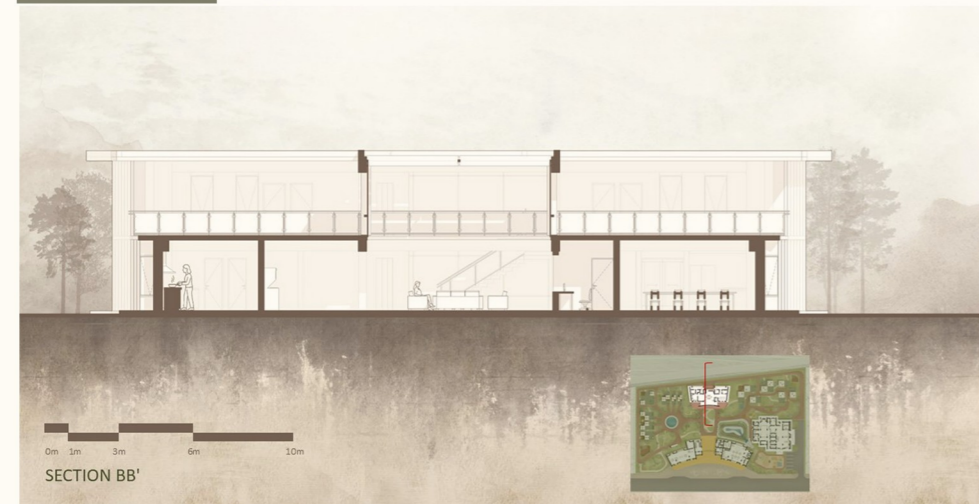
SERVICE BLOCK

The service block supports continuous 24-hour animal care by integrating service functions with caregiver living spaces. Separate kitchens for animals and caregivers ensure hygiene, controlled preparation, and operational efficiency. Caregiver dormitories provide on-site living for staff responsible for monitoring, feeding, medical support, and emotional care throughout the day and night. This setup strengthens response time, continuity of care, and ensures uninterrupted support, making animal welfare a continuous process rather than a scheduled system.

GROUND FLOOR PLAN



FIRST FLOOR PLAN



AN ENDING THAT BEGINS AGAIN

FROM RESCUE AND RECOVERY TO REHOMING, RE-RELEASE, AND COEXISTENCE



SEEING THROUGH THEIR EYES

THE LANDSCAPE IS REINTERPRETED THROUGH CANINE AND FELINE VISION, WHERE COLOUR IS REDUCED TO BLUE-YELLOW DOMINANT PERCEPTION WITH EMPHASIS ON CONTRAST, MOVEMENT, AND SPATIAL CLARITY. THIS ALLOWS THE DESIGN TO REFLECT HOW ANIMALS ACTUALLY EXPERIENCE AND NAVIGATE THEIR ENVIRONMENT RATHER THAN HUMAN VISUAL REALISM.



MODEL PHOTOGRAPHS



VIEW FROM LAKESIDE



VETERINARY BUILDING AND LANDSCAPE



CAT SHELTER MODULES



DOG SHELTER MODULES



AXONOMETRIC VIEW

