

SERENE Resort Project

SITE ANALYSIS:

New Alamein city
New Alamein City is situated on the Mediterranean coast of Egypt, within the administrative borders of Matruh Governorate. It is along the International Alexandria- Matruh Road for approximately 48 kilo meters.

Main plan:

STRUCTURE ANALYSIS:

Deconstruction of architectural buildings involves a careful analysis of their structure to facilitate safe and efficient dismantling. The primary materials encountered during deconstruction include structural elements like timber, steel, concrete, and masonry, alongside non-structural components such as doors, windows, and fixtures.

SKETCHES INSPIRE :

CONCEPT:

Creating an interior design that integrates with the surrounding nature and captures the essence of the city in it. The aim is to craft a contemporary design that embodies a sense of fantasy and embraces the emerging trend of "DECONSTRUCTION" sharp lines.

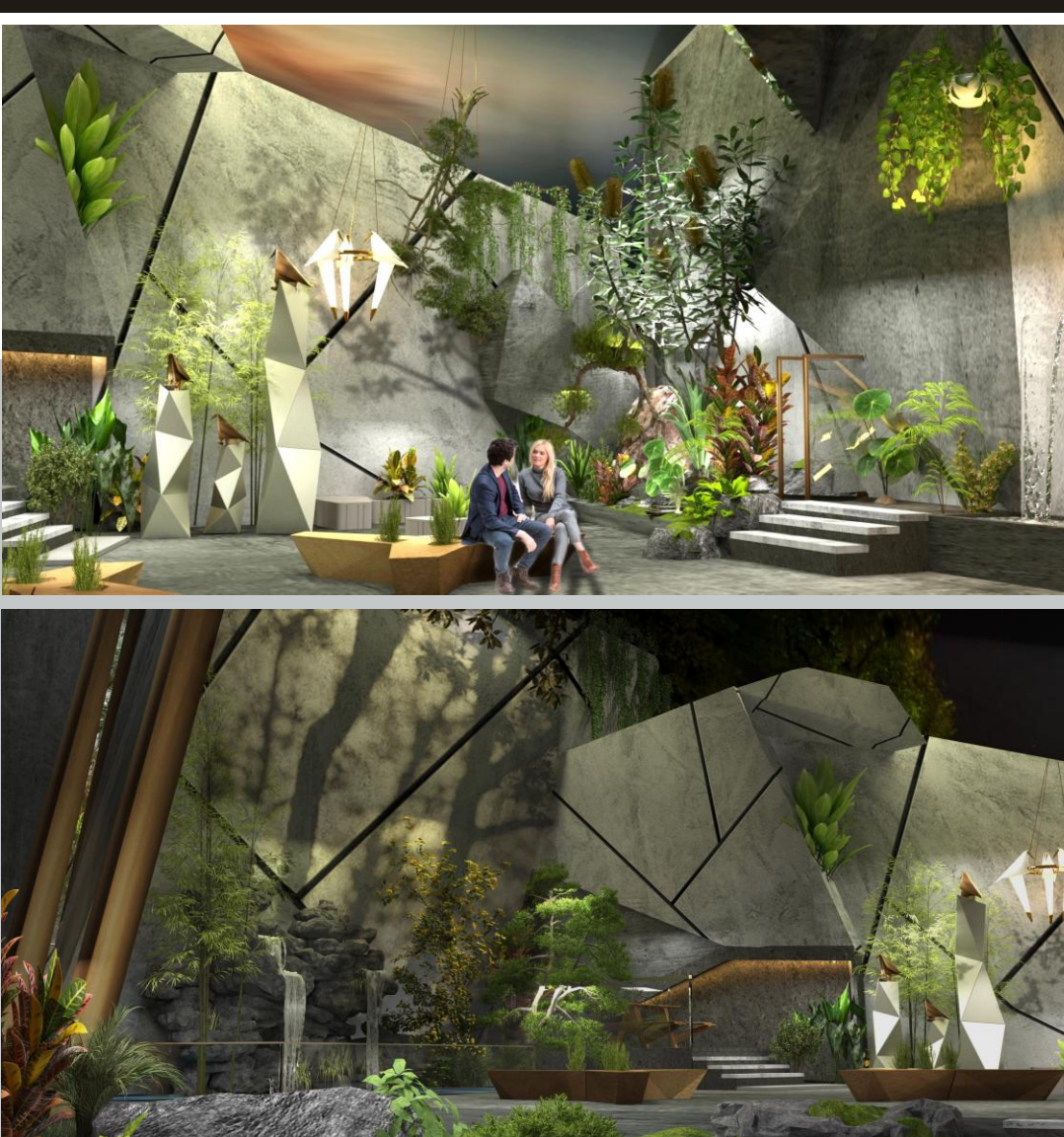
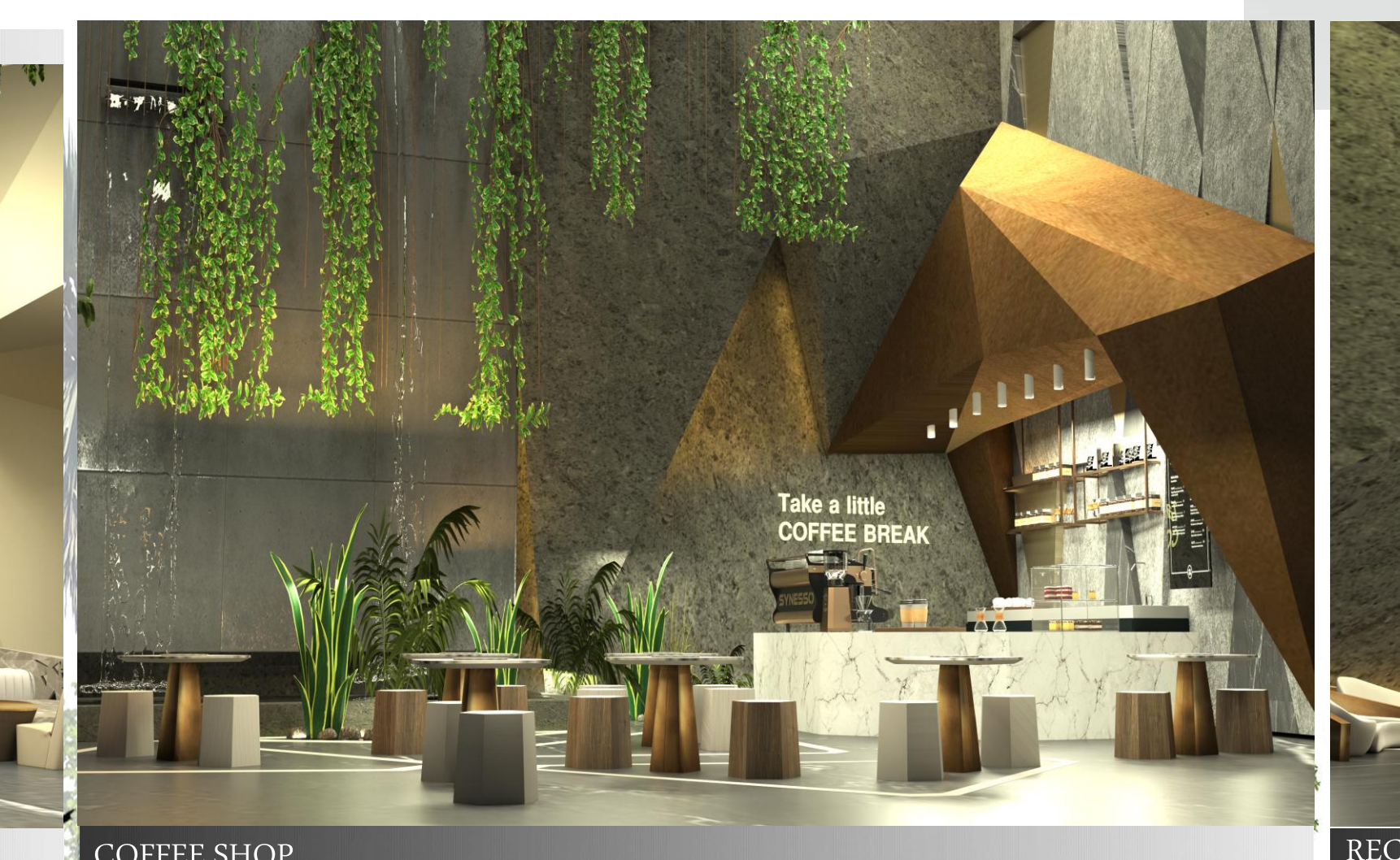
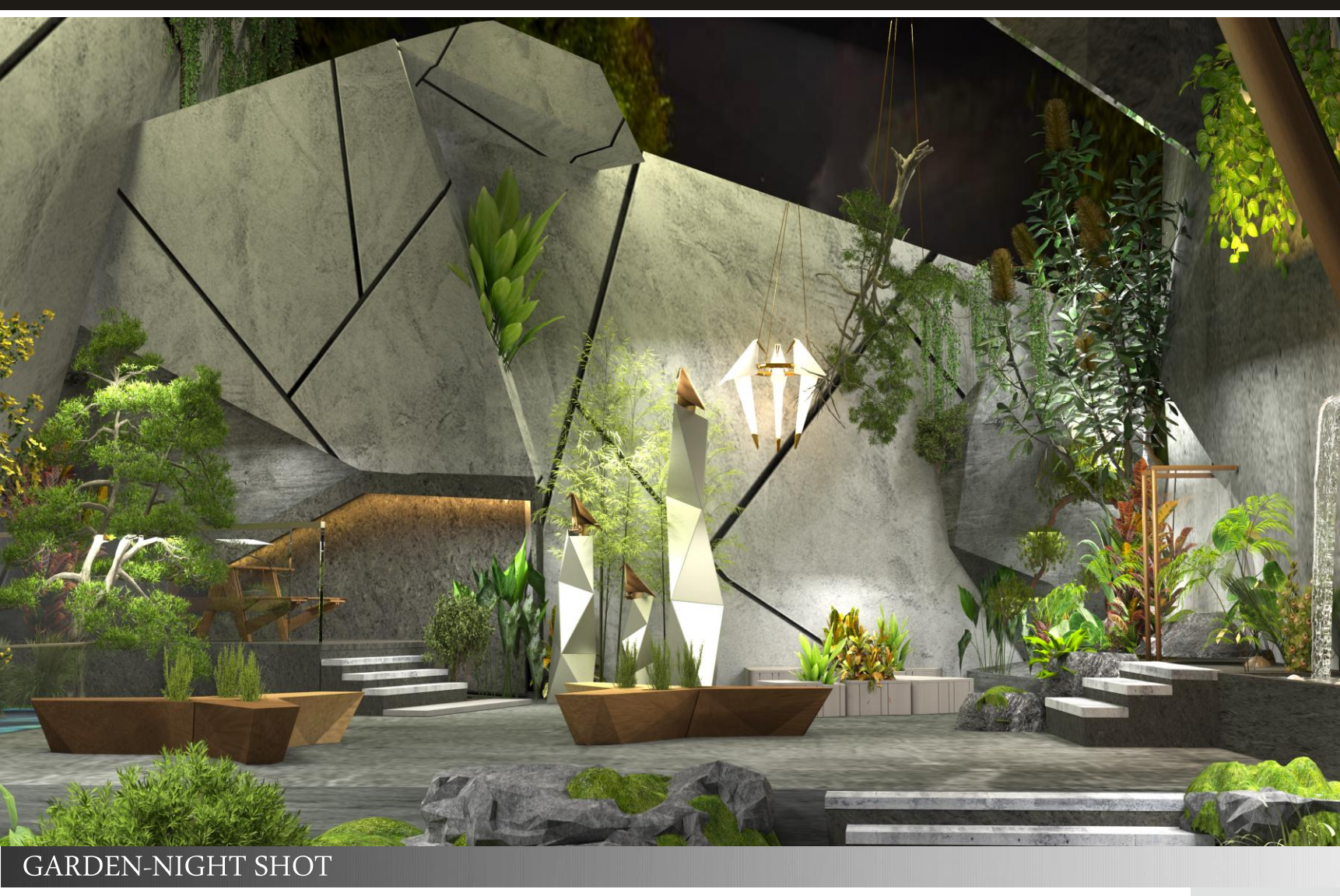
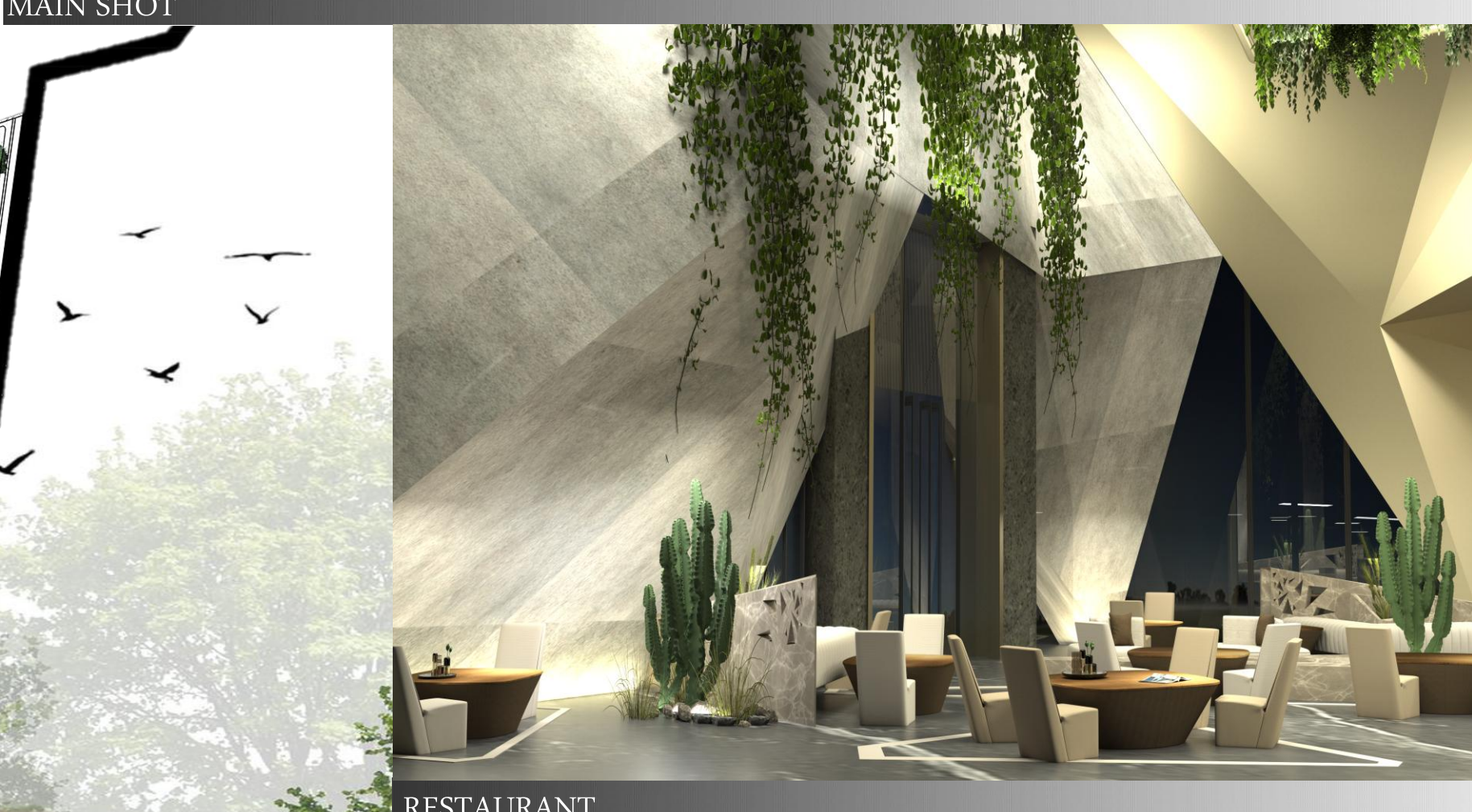
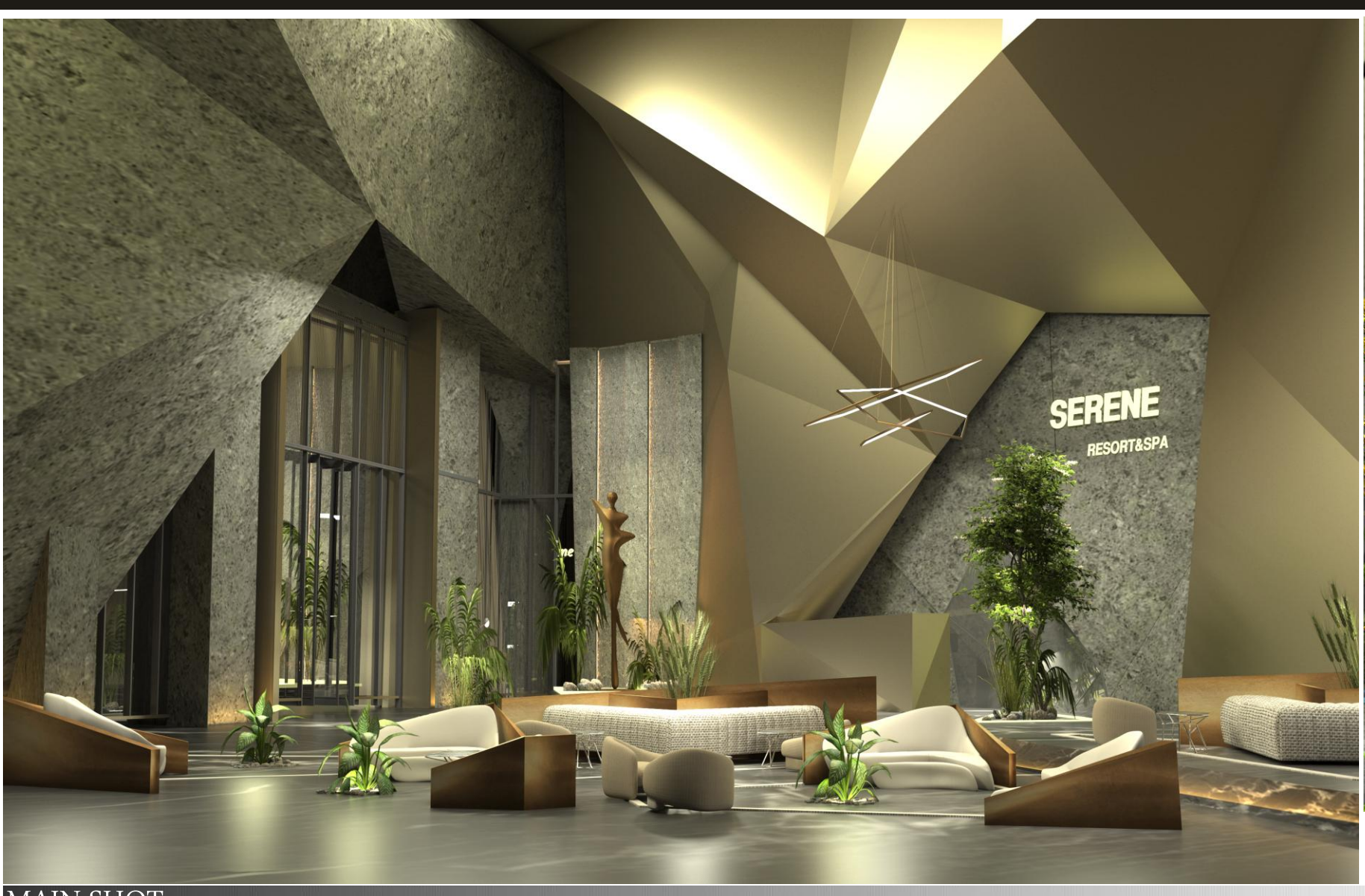
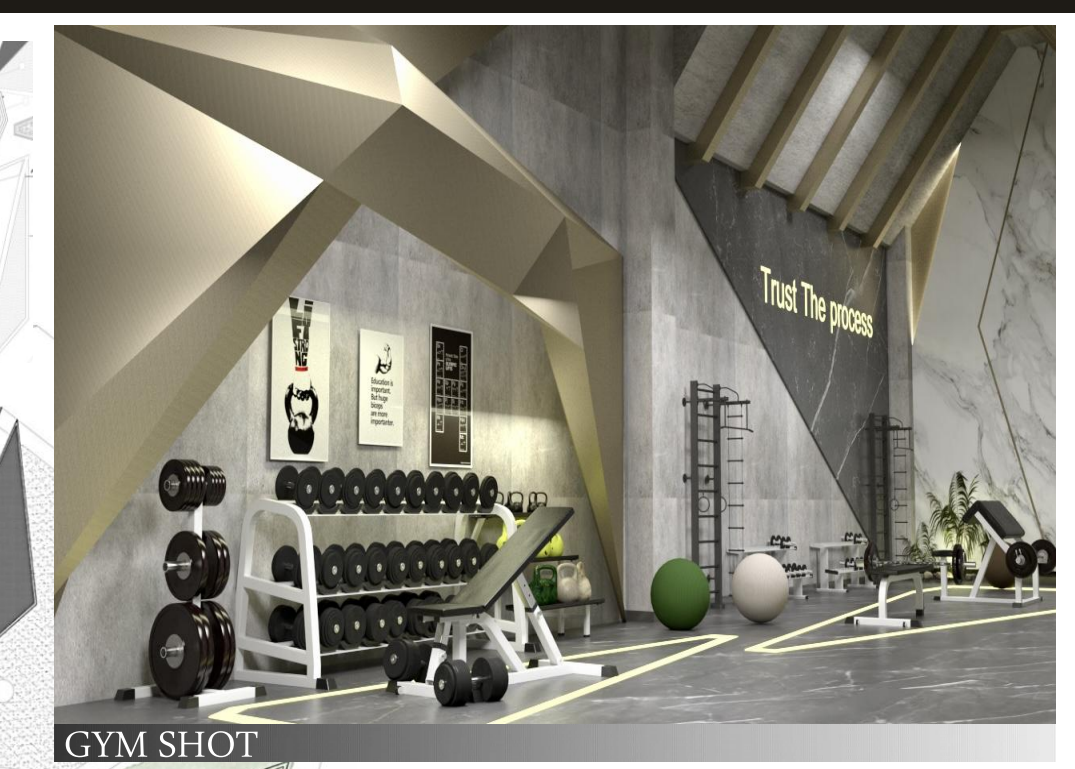
MATERIALS:

- 1-Marble
- 2-Acrylic
- 3-Concrete

COLOR SCHEME:

LIGHTS:

Mixing between Natural & Artificial lights. By studying the climate in the region it was concluded to add "sky lights" and for artificial light varies between 3000k to 3500k.



GARDEN STUDIES:

Types of plants used:

- 1-Alocasia macrorrhiza
- 2-Galathea ornata
- 3-Bryopsis Lutescens
- 4-Monstera deliciosa
- 5-Monstera cordifolia
- 6-Philodendron Xanadu
- 7-Strelitzia Nicolai

ISOMETRIC VIEW:



MOODBOARD

- 1-Monstera deliciosa: Reaching heights of up to 20-30 feet in tropical climates. Indoors, its size is typically more contained, often growing to around 6-10 feet tall depending on the pot size and support provided.
- 2-Galathea: Galatheas, including those with longer leaves, typically grow to be between 1 to 3 feet tall (30-90 cm) indoors.
- 3-Boston Fern: Boston ferns typically reach a height of around 2 to 3 feet (60 to 90 cm).
- 4-Flax Lily: It's likely a young Spruce or Fir tree, approximately 5 feet tall.
- 5-Confier: Most common indoor plants (Dracaena triflorata) usually grow to be between 1 to 4 feet (30 to 122 cm) tall.
- 6-Confierous Tree: Typically grows to 3-6 feet indoors.
- 7-Type of Maple: Indoors, Croton plants like this typically reach a height of 2 to 4 feet (60 to 120 cm). Their size will depend on the pot size and growing conditions.
- 8-Croton Plant: Indoors, Croton plants like this typically reach a height of 2 to 4 feet (60 to 120 cm). Their size will depend on the pot size and growing conditions.

INTERIOR FORMS STUDIES & WORKING DETAILS:

