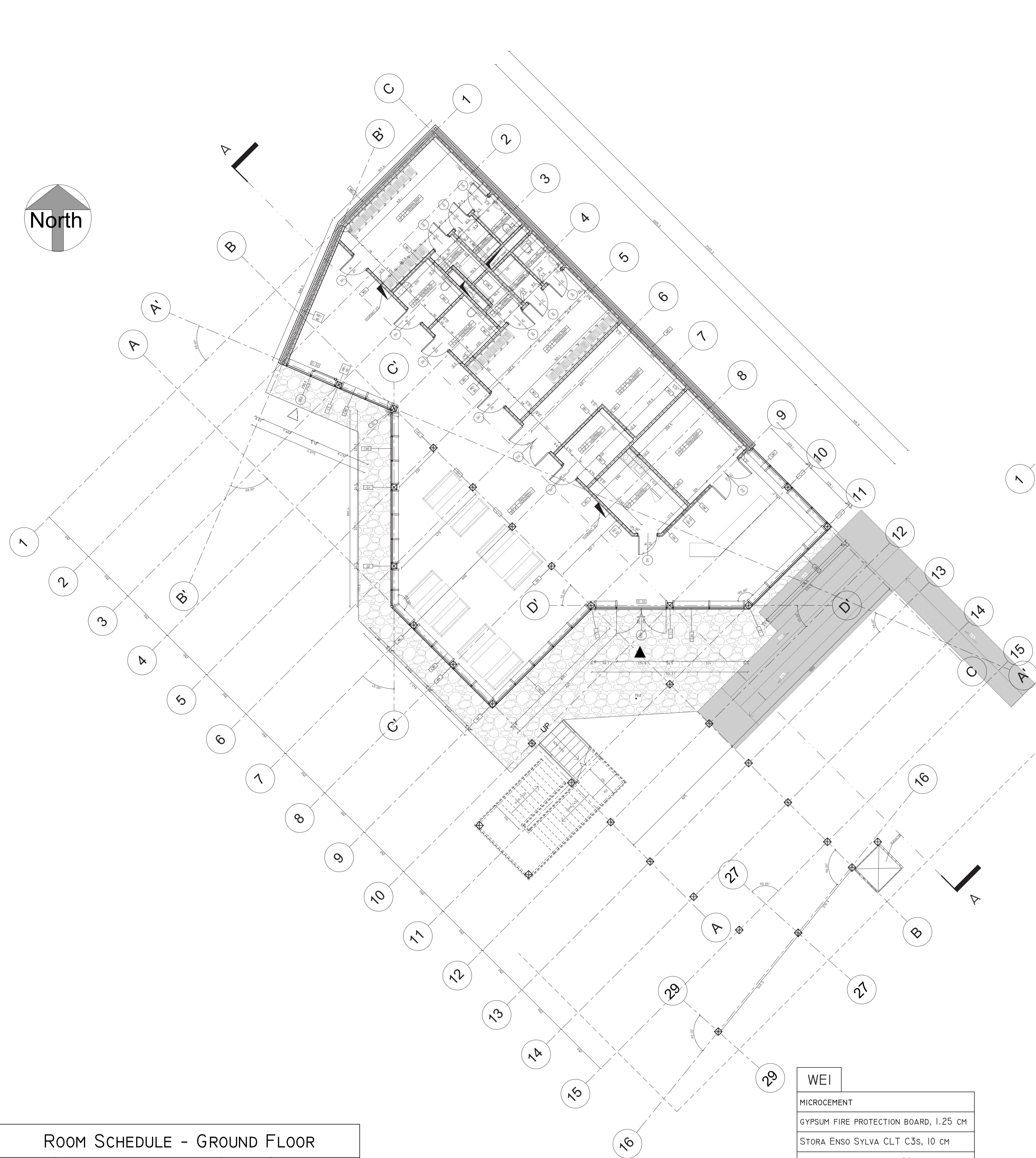
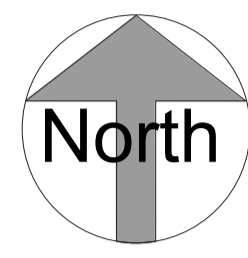


MAIN GATE ELEVATION , 1:100

	BACHELOR OF SCIENCE DIPLOMA PROJECT	WA PG
	TOPIC: Adaptive re-use as a contemporary challenge of redefining architectural typology	AV 2025/2026
BOARD: 2	SITE PLAN 1:500, MAIN GATE ELEVATION 1:100	ENG
AUTHOR:	VALERIA RUMANTSEVA	
PROJECT SUPERVISOR:	dr inż. TOMASZ SZYMANKO	
REVIEWER:	mgr inż. PAULINA DUCH-ZEBROWSKA	
SCOPE OF PROJECT:	ARCHITECTURAL AND TECHNICAL DESIGN ELEMENTS	



GROUND FLOOR PLAN, 1:100

BUILDING PARTITION SCHEDULE

WII
MICROCEMENT
GYPSUM FIRE PROTECTION BOARD, 1.25 CM
STORA ENSO SYLVA CLT C3S, 10 CM
GYPSUM FIRE PROTECTION BOARD, 1.25 CM
MICROCEMENT

CWI
UNICEL ARCHITECTURAL TIMBER CURTAIN WALL, TRIPLE GLAZED

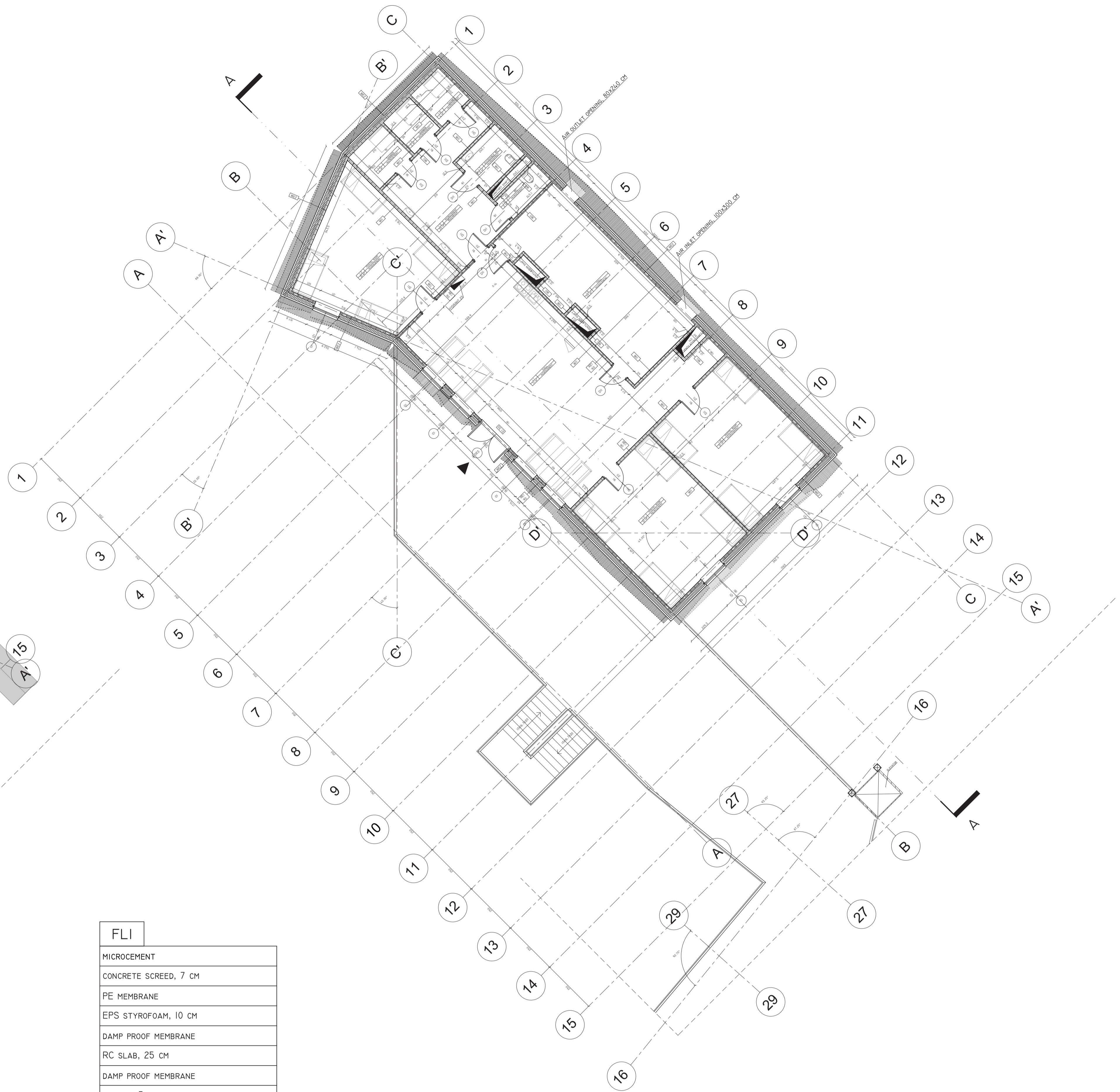
WE1
MICROCEMENT
GYPSUM FIRE PROTECTION BOARD, 1.25 CM
STORA ENSO SYLVA CLT C3S, 10 CM
WOOD FIBRE INSULATION, 20 CM
CEMENT TISSUE FIBRE BOARD, 1.5 CM
VAPOUR PERMEABLE MEMBRANE
BATTENS, 3 CM
WOODEN PANELS, 2 CM

WE2
MICROCEMENT
GYPSUM FIRE PROTECTION BOARD, 1.25 CM
STORA ENSO SYLVA CLT C3S, 10 CM
WOOD FIBRE INSULATION, 20 CM
CEMENT TISSUE FIBRE BOARD, 1.5 CM
VAPOUR PERMEABLE MEMBRANE
BATTENS/SCULPTFORM VELO MOUNTING TRACK, 3 CM
WOODEN PANELS, 2 CM
TIMBER ELEVATION SLATS

FL1
MICROCEMENT
CONCRETE SCREED, 7 CM
PE MEMBRANE
EPS STYROFOAM, 10 CM
DAMP PROOF MEMBRANE
RC SLAB, 25 CM
DAMP PROOF MEMBRANE
GRAVEL, 5 CM

FL2
MICROCEMENT
CONCRETE SCREED, 5 CM
PE MEMBRANE
INSULATION, 5 CM
DAMP PROOF MEMBRANE
STORA ENSO CLT OPEN RIB, 40 CM

RI
ZINC ROOFING, STANDING SEAM
TIMBER BOARDING, 2 CM
BATTENS, 2.5 CM
VAPOUR PERMEABLE MEMBRANE
ROOF DECKING, 2.5 CM
INSULATION, 24 CM
VAPOUR PERMEABLE MEMBRANE
CLT PANEL, 12 CM



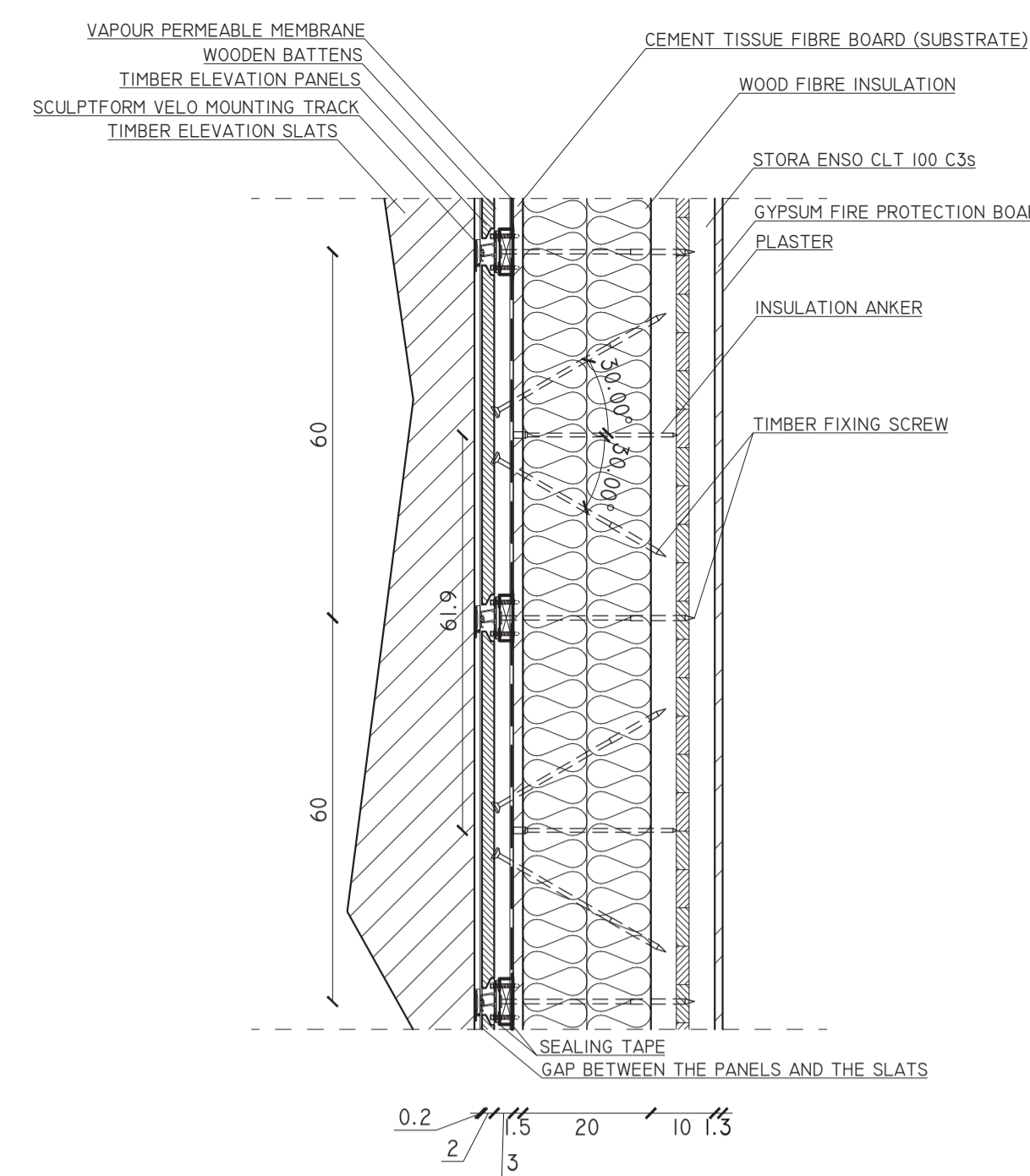
FIRST FLOOR PLAN, 1:100

ROOM SCHEDULE - FIRST FLOOR

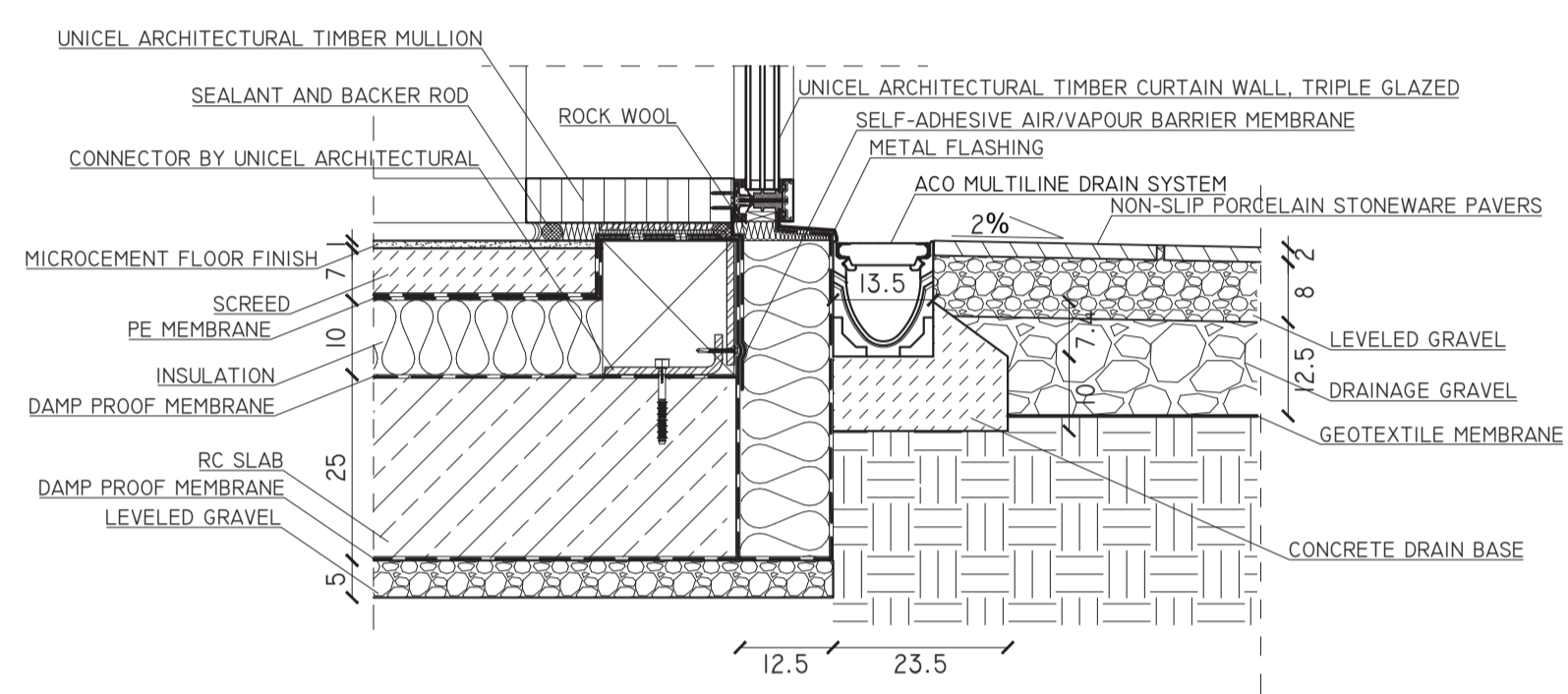
NUMBER	NAME	AREA	FLOOR FINISH
I.1	HALL	71 m ²	MICROCEMENT
I.2	HOSTEL ROOM	31 m ²	MICROCEMENT
I.3	WASHROOM	20 m ²	MICROCEMENT
I.4	SHOWER	4 m ²	MICROCEMENT
I.5	SHOWER	3 m ²	MICROCEMENT
I.6	SHOWER	4 m ²	MICROCEMENT
I.7	ACCESSIBLE WC	5 m ²	MICROCEMENT
I.8	WC	3 m ²	MICROCEMENT
I.9	FAN ROOM	33 m ²	MICROCEMENT
I.10	HOSTEL ROOM	31 m ²	MICROCEMENT
I.11	HOSTEL ROOM	31 m ²	MICROCEMENT

ROOM SCHEDULE - GROUND FLOOR			
NUMBER	NAME	AREA	FLOOR FINISH
0.1	MAIN HALL	159 m ²	MICROCEMENT
0.2	DRESSING ROOM	22 m ²	MICROCEMENT
0.3	WC	2 m ²	MICROCEMENT
0.4	SHOWER	2 m ²	MICROCEMENT
0.5	SHOWER	3 m ²	MICROCEMENT
0.6	ACCESSIBLE WC	5 m ²	MICROCEMENT
0.7	ACCESSIBLE WC	5 m ²	MICROCEMENT
0.8	DRESSING ROOM	21 m ²	MICROCEMENT
0.9	WC	2 m ²	MICROCEMENT
0.10	SHOWER	2 m ²	MICROCEMENT
0.11	SHOWER	3 m ²	MICROCEMENT
0.12	ELECTRICITY & TELECOMMUNICATIONS	19 m ²	MICROCEMENT
0.13	STORAGE	6 m ²	MICROCEMENT
0.14	KITCHEN	9 m ²	MICROCEMENT
0.15	UTILITY ROOM	13 m ²	MICROCEMENT

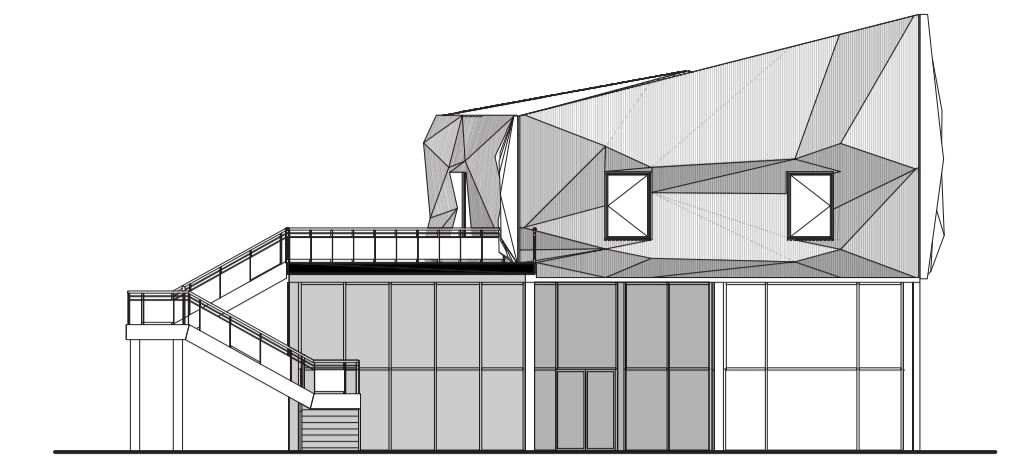
	BACHELOR OF SCIENCE DIPLOMA PROJECT	WA PG
	TOPIC: Adaptive re-use as a contemporary challenge of redefining architectural space	19/2025/2025
BOARD: 3	GROUND FLOOR PLAN 1:100, FIRST FLOOR PLAN 1:200, GROUND FLOOR ROOM SCHEDULE, FIRST FLOOR ROOM SCHEDULE, BUILDING PARTITION SCHEDULE	ENG
AUTHOR:	VALERIA RUMANTSEVA	
PROJECT SUPERVISOR:	dr inż. TOMASZ SZYMARSKI	
REVIEWER:	mgr inż. PAULINA DUCH-ZEBROWSKA	
SCOPE OF PROJECT:	ARCHITECTURAL AND TECHNICAL DESIGN ELEMENTS	



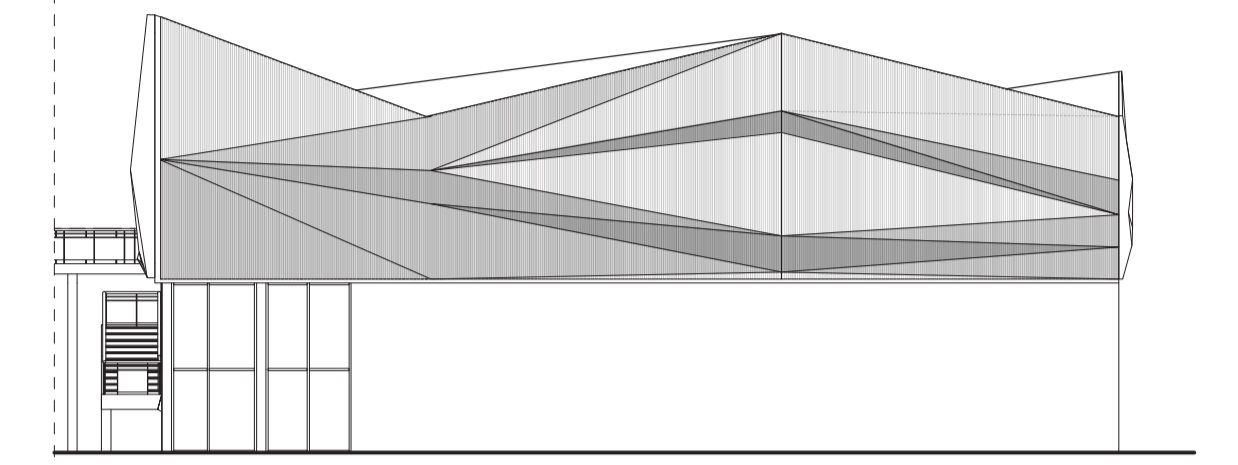
FACADE DETAIL, 1:10



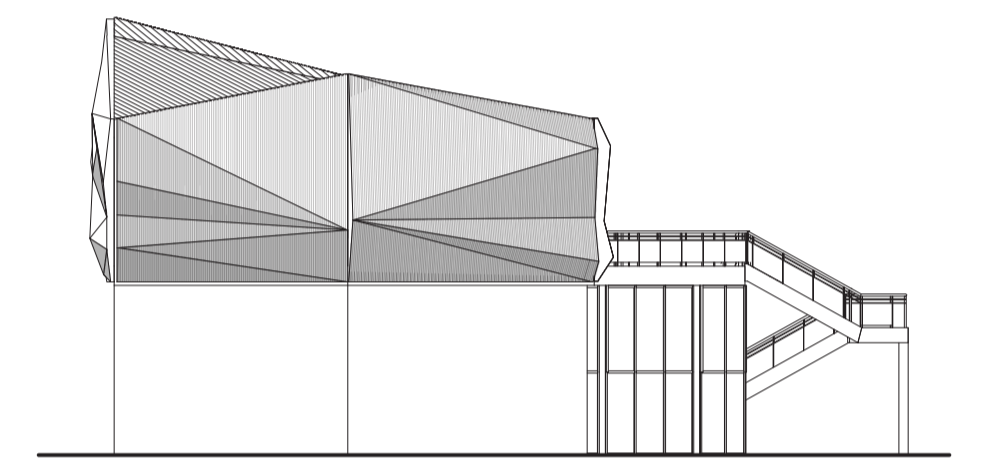
DRAIN SYSTEM DETAIL, 1:10



ENTRANCE ELEVATION, 1:200

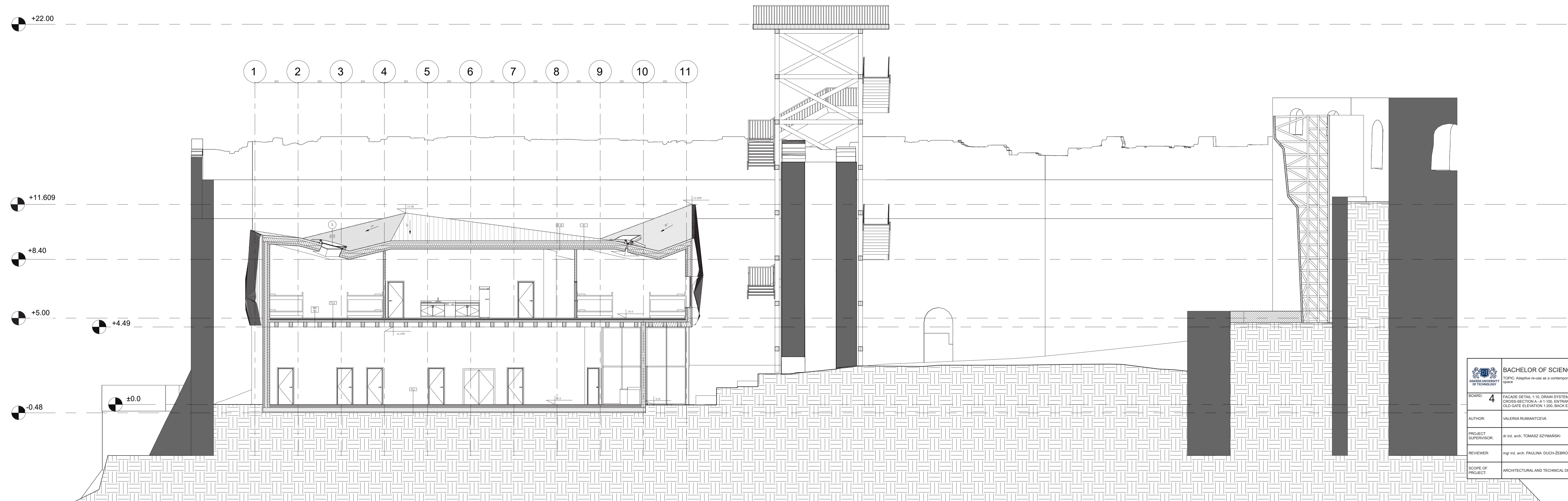


OLD GATE ELEVATION, 1:200



BACK ELEVATION, 1:200

CROSS-SECTION A - A, 1:100



	BACHELOR OF SCIENCE DIPLOMA PROJECT	WA PG
	TOPIC: Adaptive re-use as a contemporary challenge of redefining architectural space	19/2025/2025
BOARD:	4	
AUTHOR:	VALERIA RUMANTSEVA	ENG
PROJECT SUPERVISOR:	dr inż. TOMASZ SZYMANSKI	
REVIEWER:	mgr inż. PAULINA DUCH-ZEBROWSKA	
SCOPE OF PROJECT:	ARCHITECTURAL AND TECHNICAL DESIGN ELEMENTS	