

The Pavlov House Civic Hub & Public Park

Project Information

Project Title: The Pavlov House Civic Hub & Public Park

Project Typology: Cultural Architecture, Public Space, Historic Preservation & Adaptive Reuse

Project Location: 13 Poltavskyi Shliakh Street, Kharkiv, Ukraine

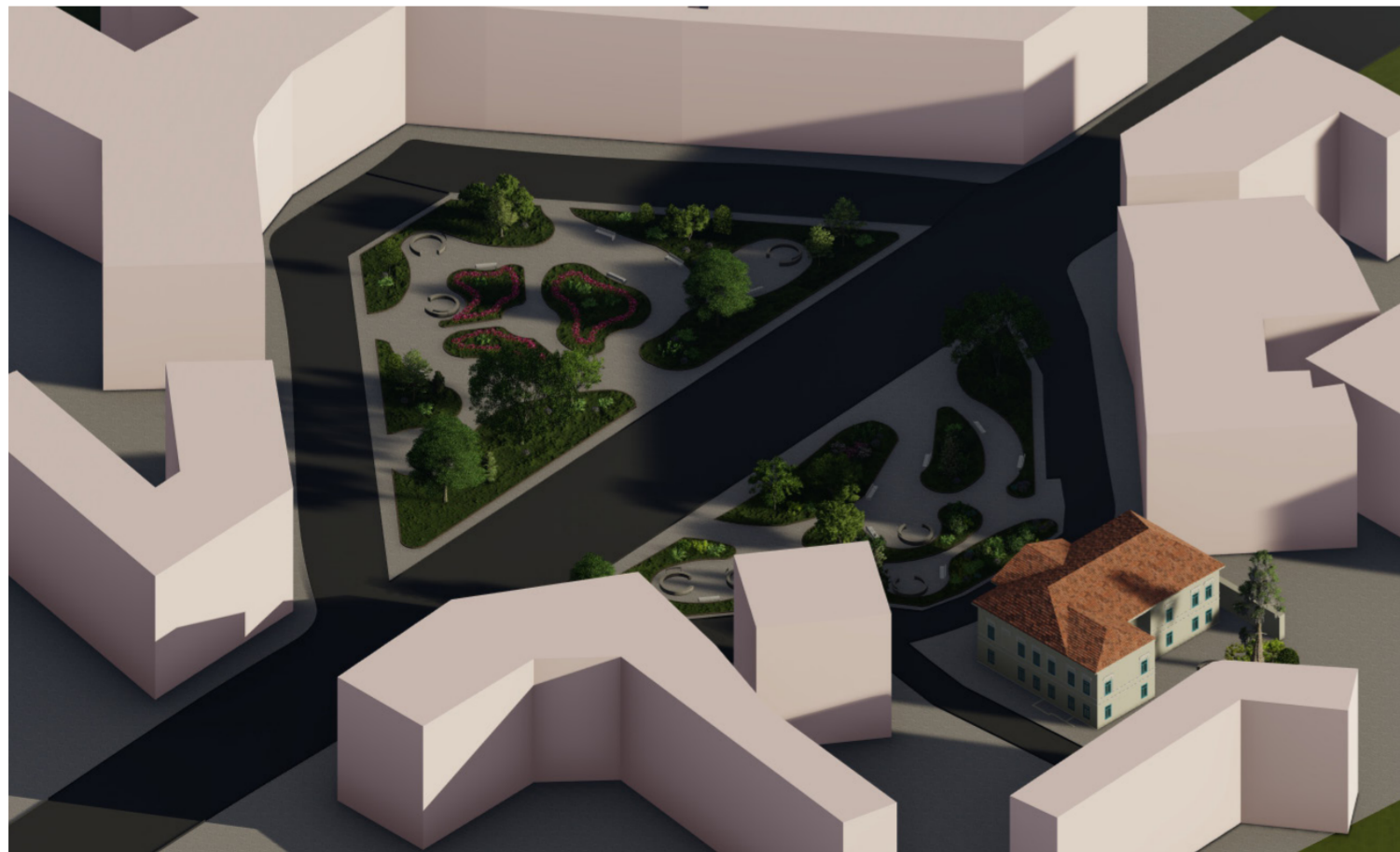
Software Used: ArchiCAD, Lumion, Photoshop

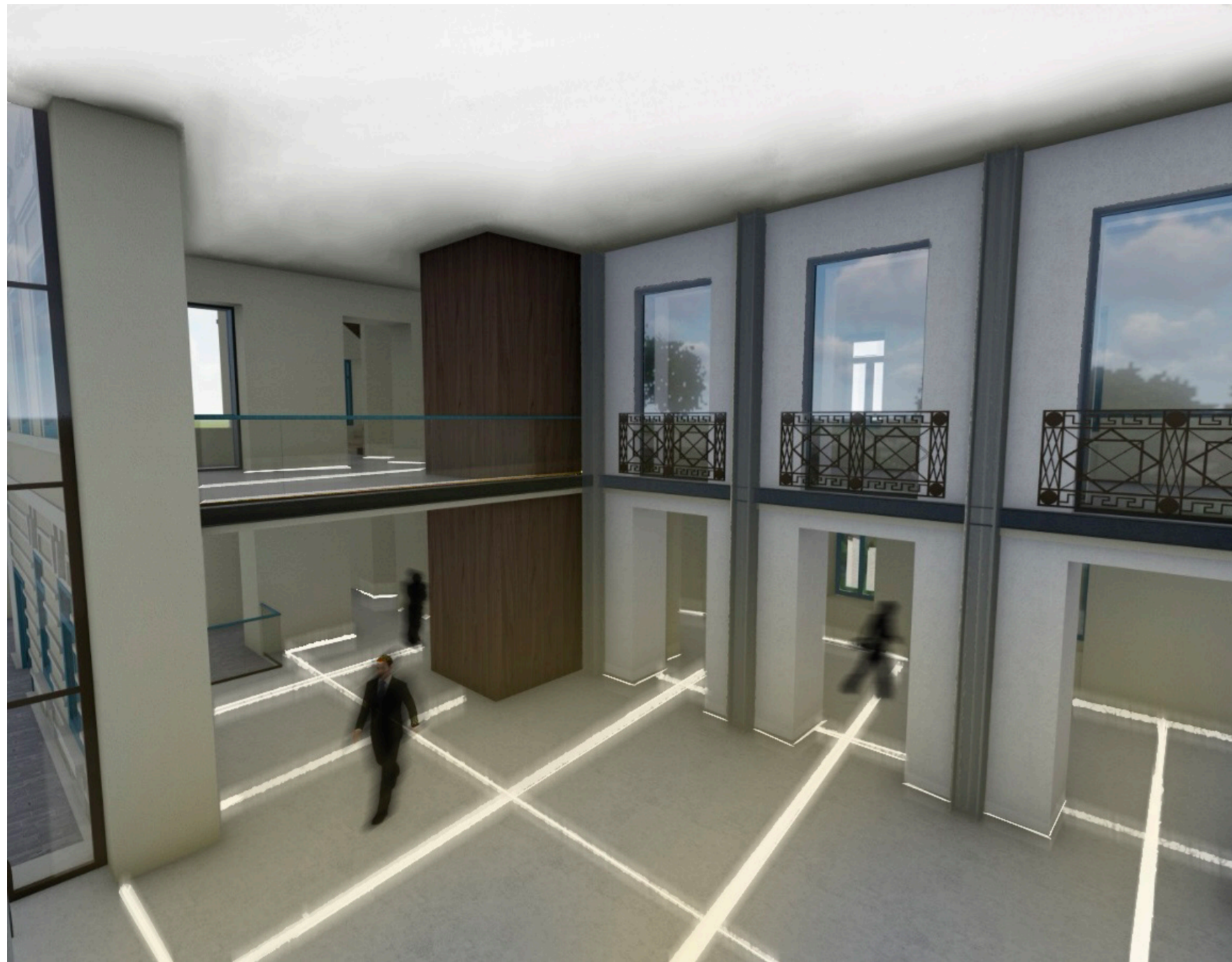
Short Overview

This project offers a sensitive, conceptually driven restoration of the Pavlov City House by balancing historical memory with contemporary civic utility. Rather than erasing the architectural scar left by the 2022 missile strike, the design reconstructs a simplified, honest concrete interpretation of the lost 1832 Classical portico, enclosing it within a transparent curtain wall. The main volume is adapted into a multi-level civic anchor containing a public library, bookstore, and co-working space. By addressing strict universal accessibility, exposing material stratigraphy and weaving the building seamlessly into a renewed, organic pedestrian park, the Pavlov House is reborn as a resilient center of social gravity for Kharkiv.

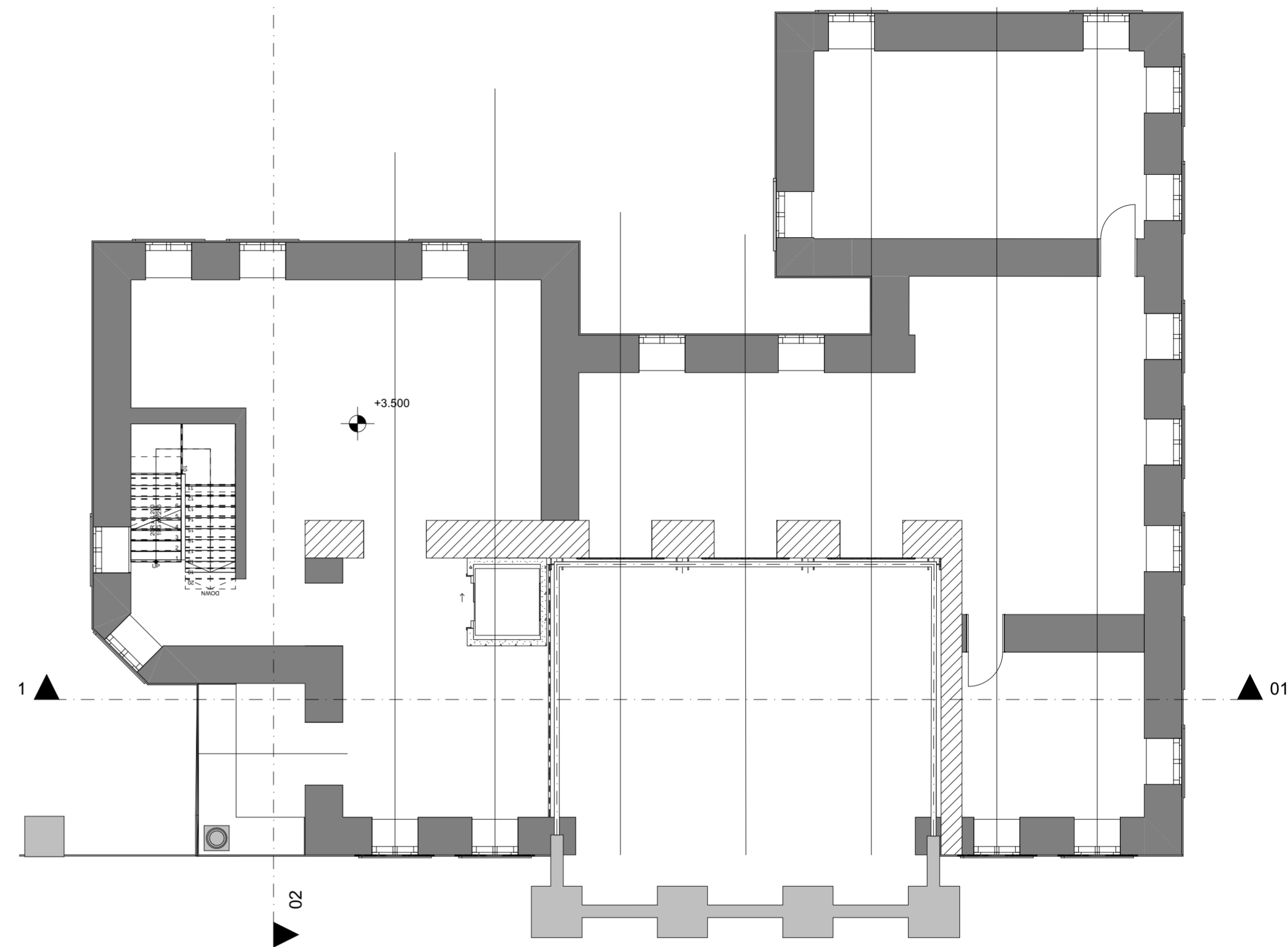


Front Facade 1:100





Ground Floor Plan 1:100



Section 01



Project Description

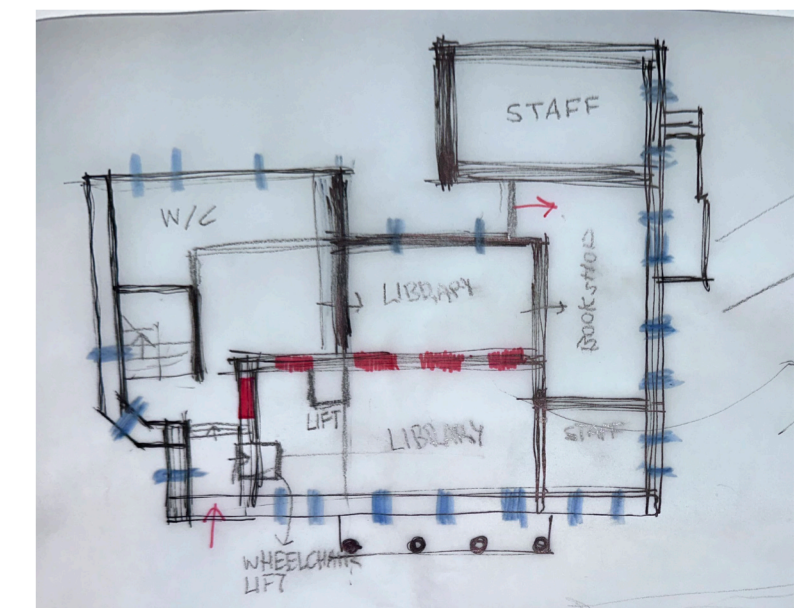
Architectural Strategy & Material Memory.

The design operates on the strict principle of visible stratigraphic restoration, ensuring a clear visual distinction between original elements and 21st century additions.

The Simplified Portico: Recognizing the immense historical value of original Classical composition, the destroyed four-column portico is rebuilt to its original scale but executed as simplified, honest reinforced concrete columns.

The Internal Void: A lightweight glass curtain wall bridges these concrete columns, sealing the envelope while keeping the central interior space conceptually "missing". This architectural graft honors the site's trauma while filling the interior with natural daylight.

Material Stratigraphy: Damaged historic masonry walls are structurally stabilized and restored using traditional brickwork, contrasting directly with the smooth, contemporary steel and reinforced concrete frameworks used to support the new spatial insertions. Wooden roof to be restored to original state.



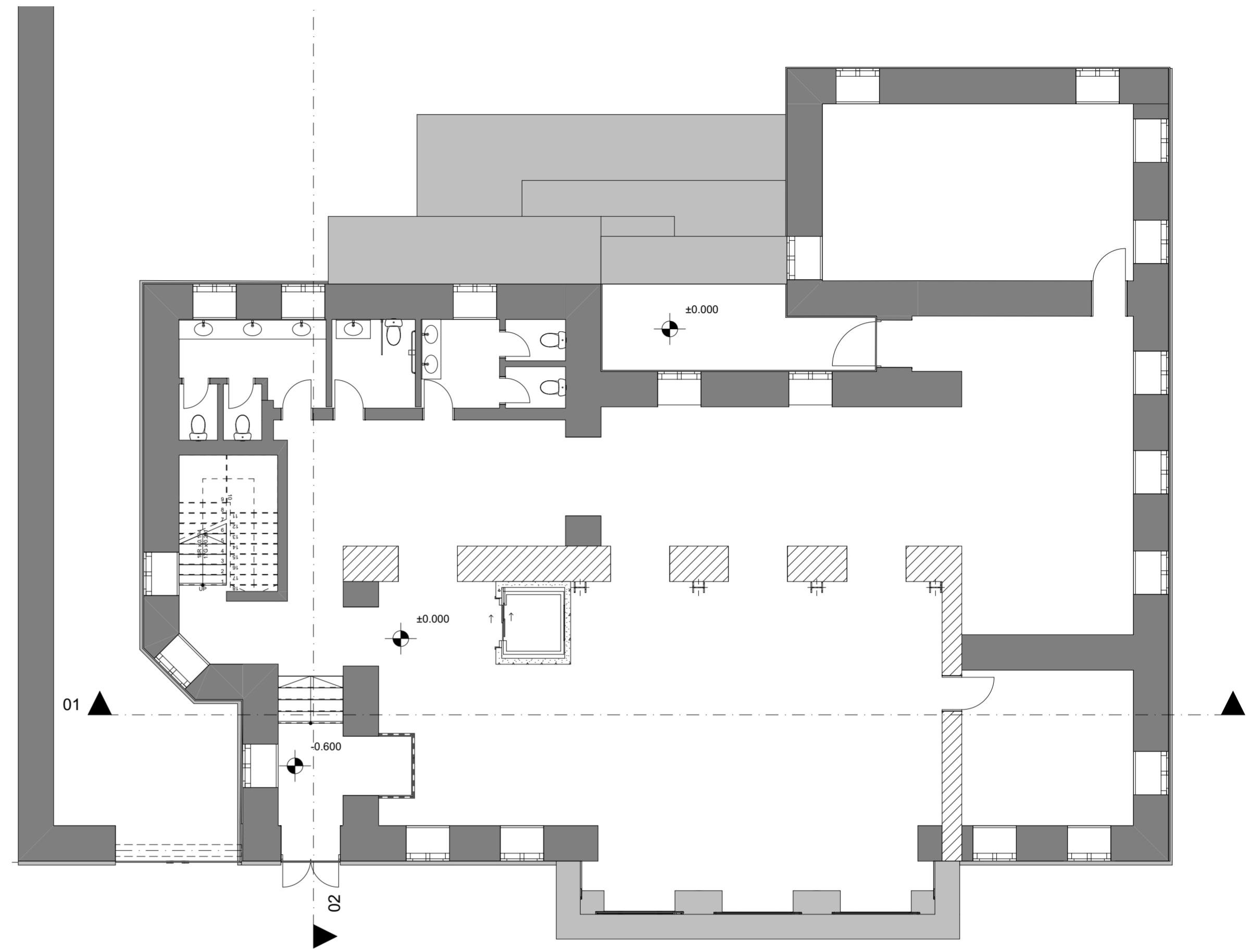
Exterior Palette: The authentic exterior color profile is preserved, utilizing a subtle graphical reversal on the decorative stucco moldings to softly indicate repaired areas. Interior Artifacts: The surviving historic staircase is preserved in its authentic location. To safeguard damaged interior elements, the original wrought-iron balcony railings—saved from the collapsed facade—are integrated into the interior layout, serving as protective barriers and tangible touchstones of the building's history.



Section 02



First Floor Plan 1:100



Functional Program & Accessibility

The interior layout transitions from a dynamic, active ground floor to quiet, focused workspaces above:

Ground Level (-0.6m to 0.00m): Visitors cross the threshold at an altered grade of -0.6m, where a dedicated wheelchair-accessible platform lift brings users up to the main 0.00 level. This level hosts a vibrant public bookstore, library checkout, and restrooms, ensuring universal accessibility.

Upper Level (Co-working & Reading): Connected by the original staircase and a new internal elevator, the upper floor provides flexible co-working environments and quiet reading areas overlooking the sunlit central void.



Urban & Landscape Integration

The proposal expands past the property lines to transform the surrounding hexagonal square into a cohesive, pedestrian-oriented environment.

The Public Park: The landscape layout prioritizes the preservation of all existing mature trees and plants. The new pathway network is designed with organic, flowing lines that create a relaxing, slow-paced atmosphere, intentionally curving to frame and highlight the park's central historical monument.

The Library Backyard: The rear courtyard of the estate is converted into a private, peaceful reading garden. Outfitted with outdoor seating, this enclosed green space serves as a quiet acoustic sanctuary for library visitors, students and thinkers, directly reconnecting the site to its historical manor-garden typography.