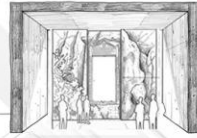
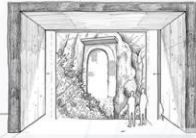


JOURNEY OF PAUSE: An Inhabitable Spatial Narrative in Nahr al-Kalb



1

EGYPTIAN EXHIBITION → RAMESSES II STELE

THE EGYPTIAN EXHIBITION IS THE FIRST OF SEVERAL EXHIBITIONS THAT ARE PART OF THE JOURNEY OF PAUSE. IT IS A PLACE WHERE VISITORS CAN EXPERIENCE THE HISTORY OF EGYPT THROUGH THE GREAT STONE RELIEFS OF RAMESSES II. THE EXHIBITION IS DESIGNED TO BE A PLACE WHERE VISITORS CAN EXPERIENCE THE HISTORY OF EGYPT THROUGH THE GREAT STONE RELIEFS OF RAMESSES II.

2

ASSYRIAN EXHIBITION → ESARHADDON STELE

THE ASSYRIAN EXHIBITION IS THE SECOND OF SEVERAL EXHIBITIONS THAT ARE PART OF THE JOURNEY OF PAUSE. IT IS A PLACE WHERE VISITORS CAN EXPERIENCE THE HISTORY OF ASSYRIA THROUGH THE GREAT STONE RELIEFS OF ESARHADDON. THE EXHIBITION IS DESIGNED TO BE A PLACE WHERE VISITORS CAN EXPERIENCE THE HISTORY OF ASSYRIA THROUGH THE GREAT STONE RELIEFS OF ESARHADDON.

3

ROMAN EXHIBITION → CARACALLA STELE

THE ROMAN EXHIBITION IS THE THIRD OF SEVERAL EXHIBITIONS THAT ARE PART OF THE JOURNEY OF PAUSE. IT IS A PLACE WHERE VISITORS CAN EXPERIENCE THE HISTORY OF ROME THROUGH THE GREAT STONE RELIEFS OF CARACALLA. THE EXHIBITION IS DESIGNED TO BE A PLACE WHERE VISITORS CAN EXPERIENCE THE HISTORY OF ROME THROUGH THE GREAT STONE RELIEFS OF CARACALLA.

4

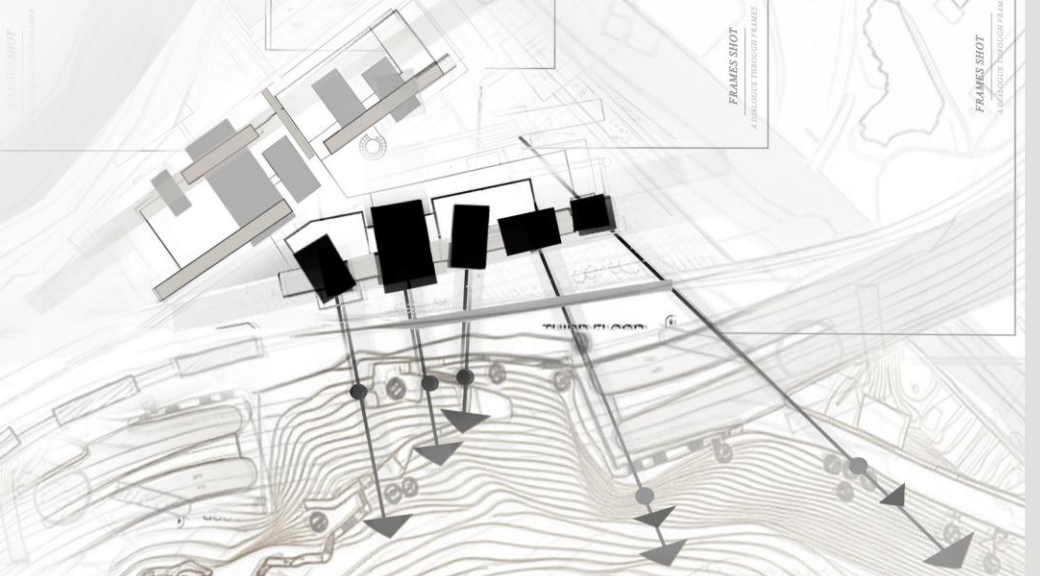
OTTOMAN EXHIBITION → ABDÜLMEJID I STELE

THE OTTOMAN EXHIBITION IS THE FOURTH OF SEVERAL EXHIBITIONS THAT ARE PART OF THE JOURNEY OF PAUSE. IT IS A PLACE WHERE VISITORS CAN EXPERIENCE THE HISTORY OF THE OTTOMAN EMPIRE THROUGH THE GREAT STONE RELIEFS OF ABDÜLMEJID I. THE EXHIBITION IS DESIGNED TO BE A PLACE WHERE VISITORS CAN EXPERIENCE THE HISTORY OF THE OTTOMAN EMPIRE THROUGH THE GREAT STONE RELIEFS OF ABDÜLMEJID I.

5

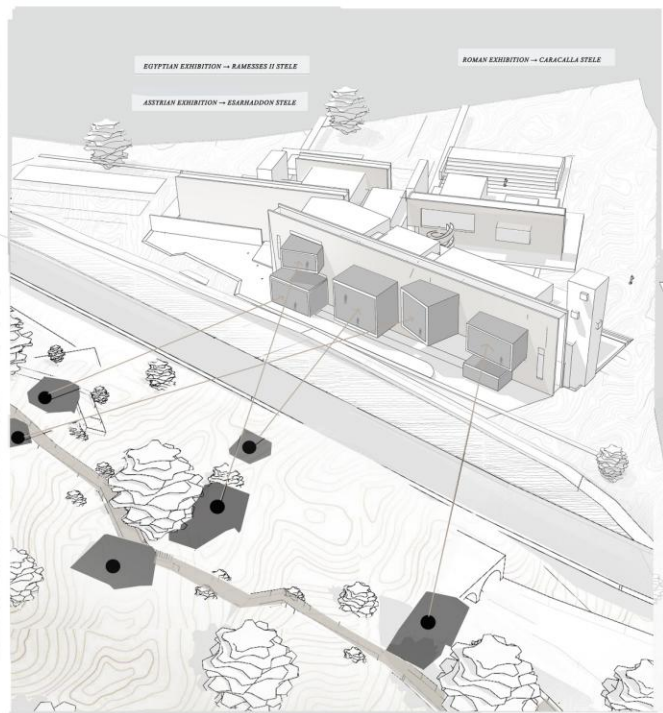
MODERN / ALLIED FORCES EXHIBITION → WWI STELE

THE MODERN / ALLIED FORCES EXHIBITION IS THE FIFTH AND FINAL EXHIBITION THAT IS PART OF THE JOURNEY OF PAUSE. IT IS A PLACE WHERE VISITORS CAN EXPERIENCE THE HISTORY OF THE MODERN WORLD THROUGH THE GREAT STONE RELIEFS OF WWI. THE EXHIBITION IS DESIGNED TO BE A PLACE WHERE VISITORS CAN EXPERIENCE THE HISTORY OF THE MODERN WORLD THROUGH THE GREAT STONE RELIEFS OF WWI.



FRAMING THE STELAES

THE JOURNEY CELEBRATES IN OPEN PLATFORMS THAT RECONNECT THE GREATER WITH THE LANDSCAPE, WHERE ARCHITECTURE DISSOLVES AND THE ORIGINAL INSCRIPTIONS RECLAIM PROMINENCE. THROUGH THIS SEQUENCE, THE PROJECT REVEALS INSIGHTS AS BOTH PHYSICAL AND EXPERIENTIAL, WHERE WALL CHART MEMOIRS, BUTT AMONG LIVED MOMENTS, AND MOVEMENT ITSELF BECOMES A CONTINUOUS ACT OF READING AND REWRITING FUTURES.



FRAMING AS DIALOGUE: NAHR AL-KALB

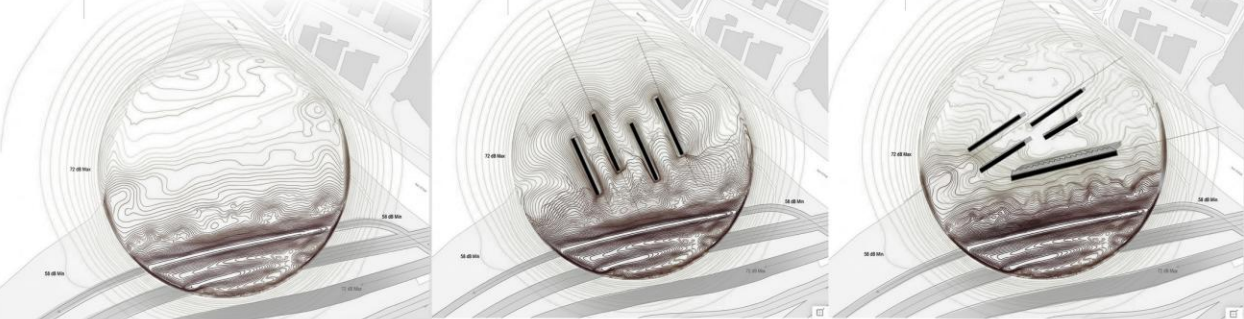


NOISE IMPACT - ALTERNATIVE SOLUTIONS

NOISE IMPACT FROM THE HIGHWAY
THE SITE AT NAHR AL-KALB IS SIGNIFICANTLY AFFECTED BY NOISE GENERATED FROM THE ADJACENT COASTAL HIGHWAY. WALL WALLS CAN BE A CONCRETE WALL OR HIGH DENSITY TRAFFIC THROUGHOUT THE SITE. DUE TO THE SITE'S PROXIMITY TO THE ADJACENT HIGHWAY, TRAFFIC NOISE PREDOMINATES DIRECTLY ACROSS THE LANDSCAPE AND EXTENDS TOWARDS THE LOWER AREAS OF THE SITE. THE OPEN TERRAIN AND THE ABSENCE OF SUBSTANTIAL PHYSICAL BARRIERS ALLOW NOISE WAVES TO SPREAD FREELY, CREATING A HIGH ACoustic INTENSITY ZONE THAT SIGNIFICANTLY INTERFERES WITH THE VISUAL AND ENVIRONMENTAL QUALITY OF THE SITE, SHAPING BOTH THE ACOUSTIC CHARACTER AND THE SPATIAL EXPERIENCE OF THE SITE.

ALTERNATIVE 01 - WALLS PARALLEL TO THE HIGHWAY
IN THE FIRST SPATIAL CONFIGURATION, THE WALLS ARE ORIENTED PARALLEL TO THE HIGHWAY. IN THIS ARRANGEMENT, THE WALLS DO NOT PRESENT AN ACOUSTIC BARRIER THAT INTERFERES WITH THE NOISE WAVES. THE WALLS INSTEAD TRAP NOISE DIRECTLY INTO THE SITE BETWEEN THE WALLS, CREATING A HIGH ACoustic INTENSITY ZONE THAT SIGNIFICANTLY INTERFERES WITH THE VISUAL AND ENVIRONMENTAL QUALITY OF THE SITE, SHAPING BOTH THE ACOUSTIC CHARACTER AND THE SPATIAL EXPERIENCE OF THE SITE.

ALTERNATIVE 02 - WALLS PARALLEL TO THE STREET
IN THE SECOND CONFIGURATION, THE WALLS ARE ORIENTED PARALLEL TO THE HIGHWAY. THIS ORIENTATION ALLOWS THE WALLS TO FUNCTION AS AN ACOUSTIC BARRIER THAT INTERFERES WITH THE NOISE WAVES. THE WALLS INSTEAD TRAP NOISE DIRECTLY INTO THE SITE BETWEEN THE WALLS, CREATING A HIGH ACoustic INTENSITY ZONE THAT SIGNIFICANTLY INTERFERES WITH THE VISUAL AND ENVIRONMENTAL QUALITY OF THE SITE, SHAPING BOTH THE ACOUSTIC CHARACTER AND THE SPATIAL EXPERIENCE OF THE SITE.



FRAMING THE STELAES- ALTERNATIVE SOLUTIONS



3