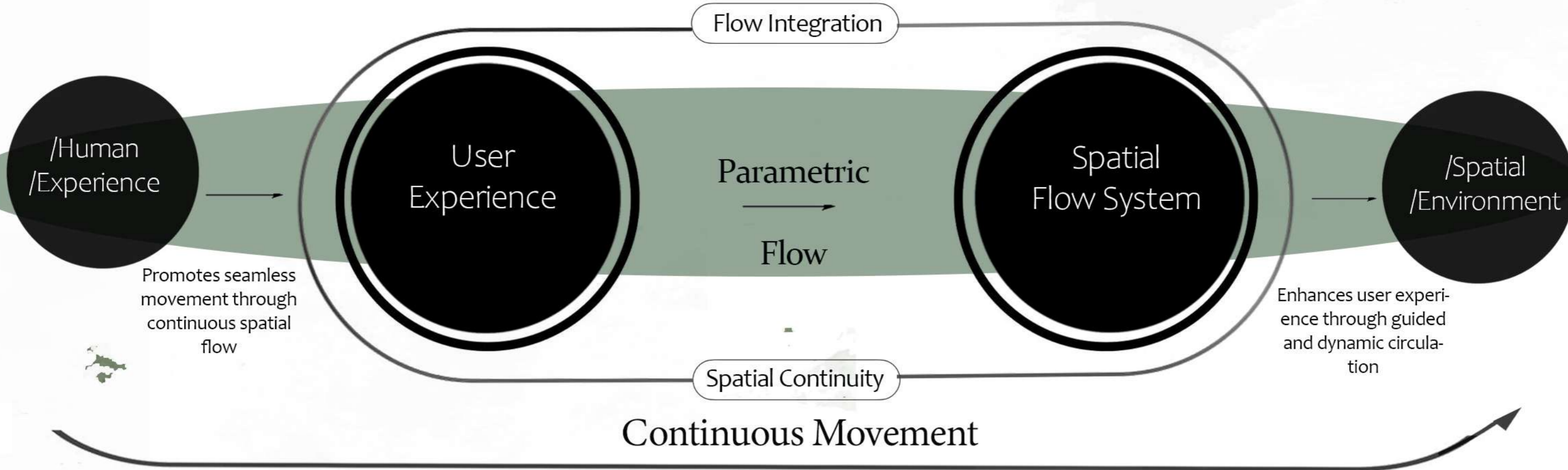
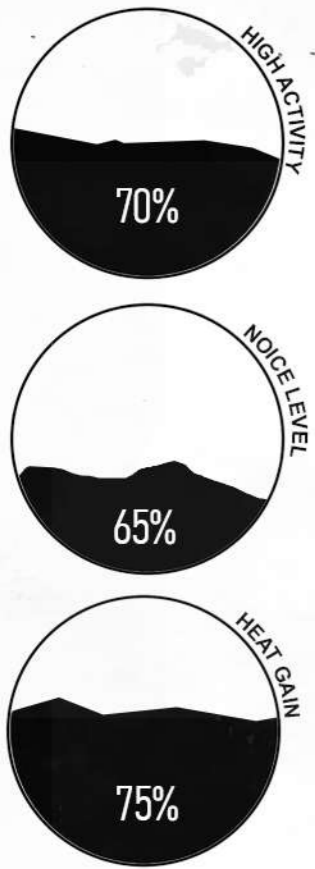


# CONCEPT APPROCHE



## IMPACT



### URBAN ACTIVITY

The area experiences intense urban activity due to commercial and tourism functions, leading to overcrowding and constant movement.



### THERMAL DISCOMFORT

High density and limited greenery increase heat accumulation and reduce airflow

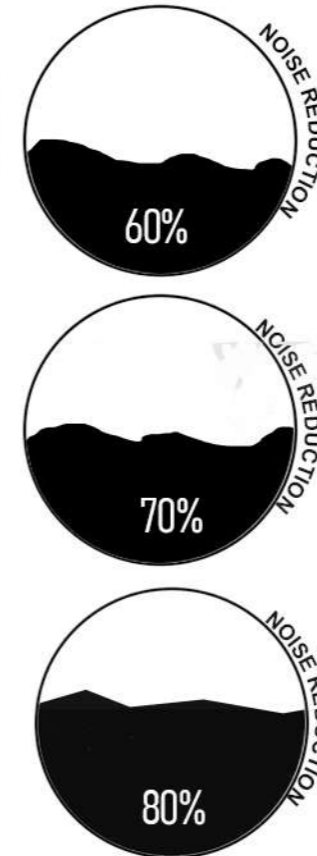
Dense urban structures and limited greenery increase heat gain and restrict airflow within the site, reducing environmental comfort and overall user experience

### ACOUSTIC DISTURBANCE

High levels of noise from traffic, nightlife, and commercial activities affect the overall comfort and user experience.



## IMPACT



Reducing external noise through spatial zoning, material selection, and controlled openings to create a quiet reading environment

Enhancing airflow through spatial openings and layout design to improve thermal comfort and reduce heat accumulation

### NATURAL VENTILATION



### PASSIVE DESIGN

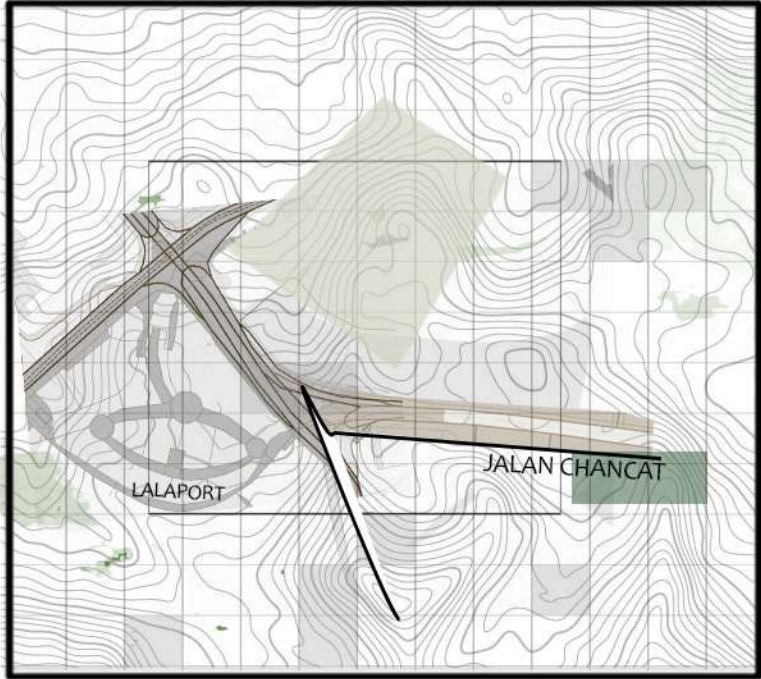
Utilizing shading, natural lighting, and material selection to create a comfortable and energy-efficient environment

## ACOUSTIC CONTROL

## CONTEXTUAL ISSUES

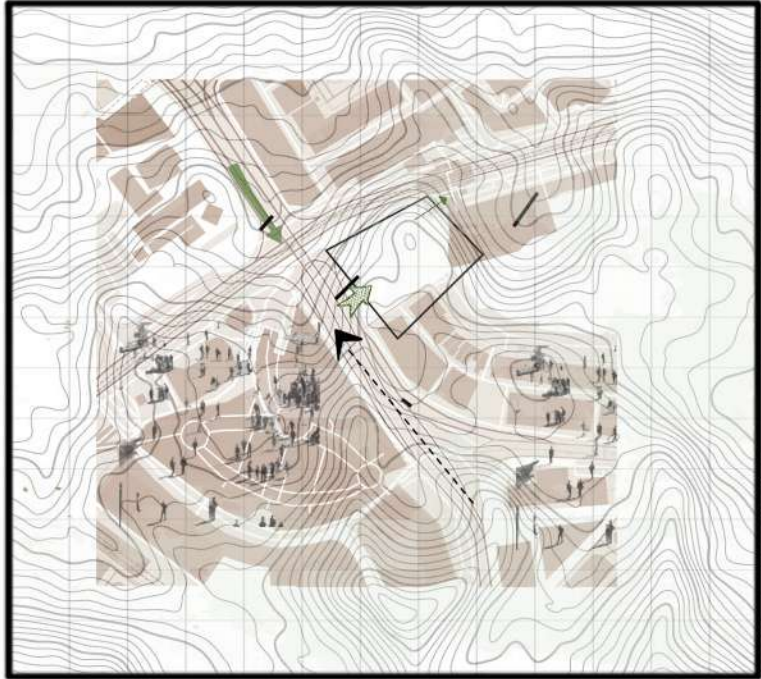
## SOLUTION FRAMEWORK

# CONTEXTUAL ANALYSIS



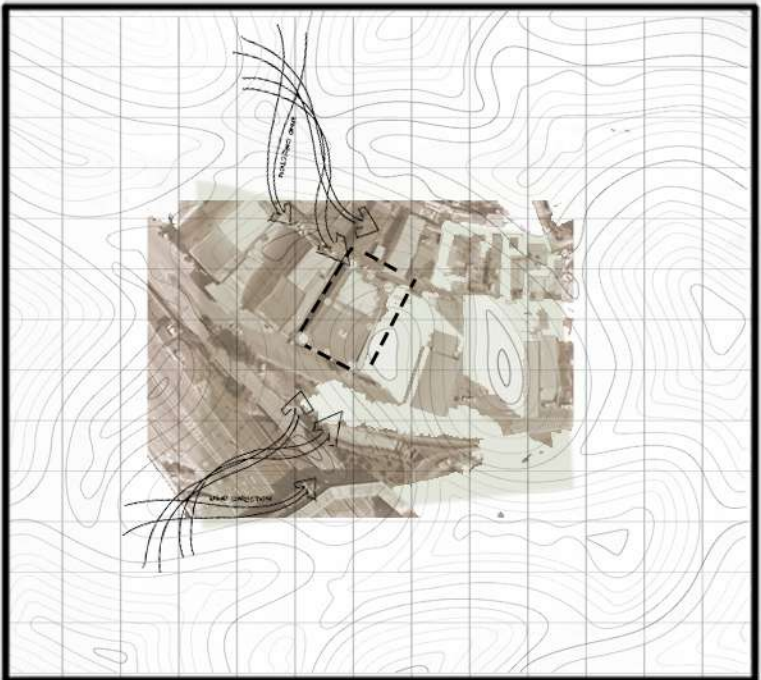
## CONTEXT

The site is positioned within a vibrant commercial context, adjacent to LaLaport Mall and a primary road, ensuring high accessibility and visibility, while benefiting from continuous pedestrian activity



## CIRCULATION

The site has intense circulation patterns, with continuous pedestrian flow and active vehicular movement due to nearby commercial attractions and main road access, enhancing accessibility and urban connectivity.”



## BREEZE/WIND

Prevailing winds from the northeast influence the site, although airflow is moderated by the dense urban surroundings, creating localized air movement and reducing overall ventilation efficiency.

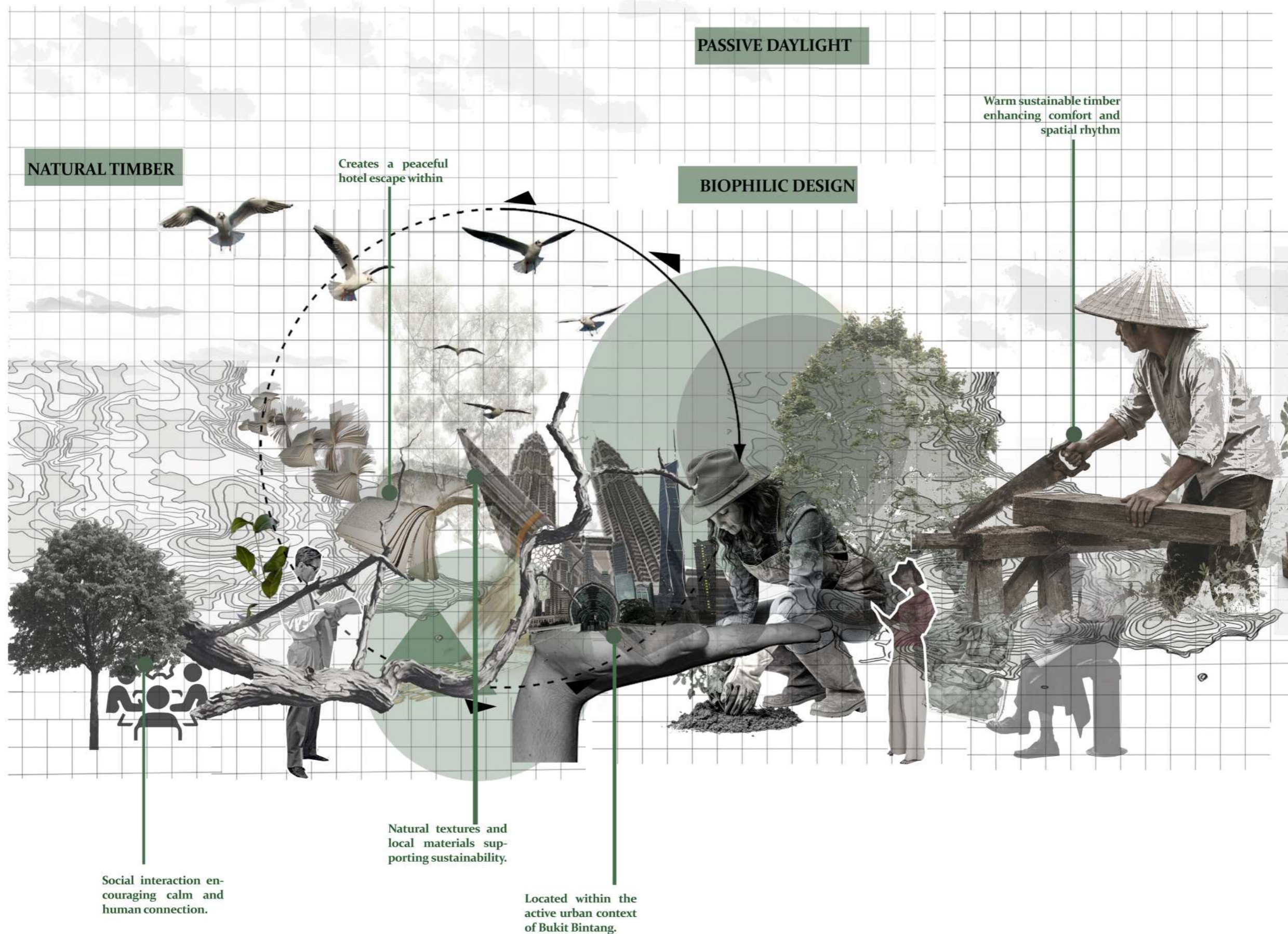


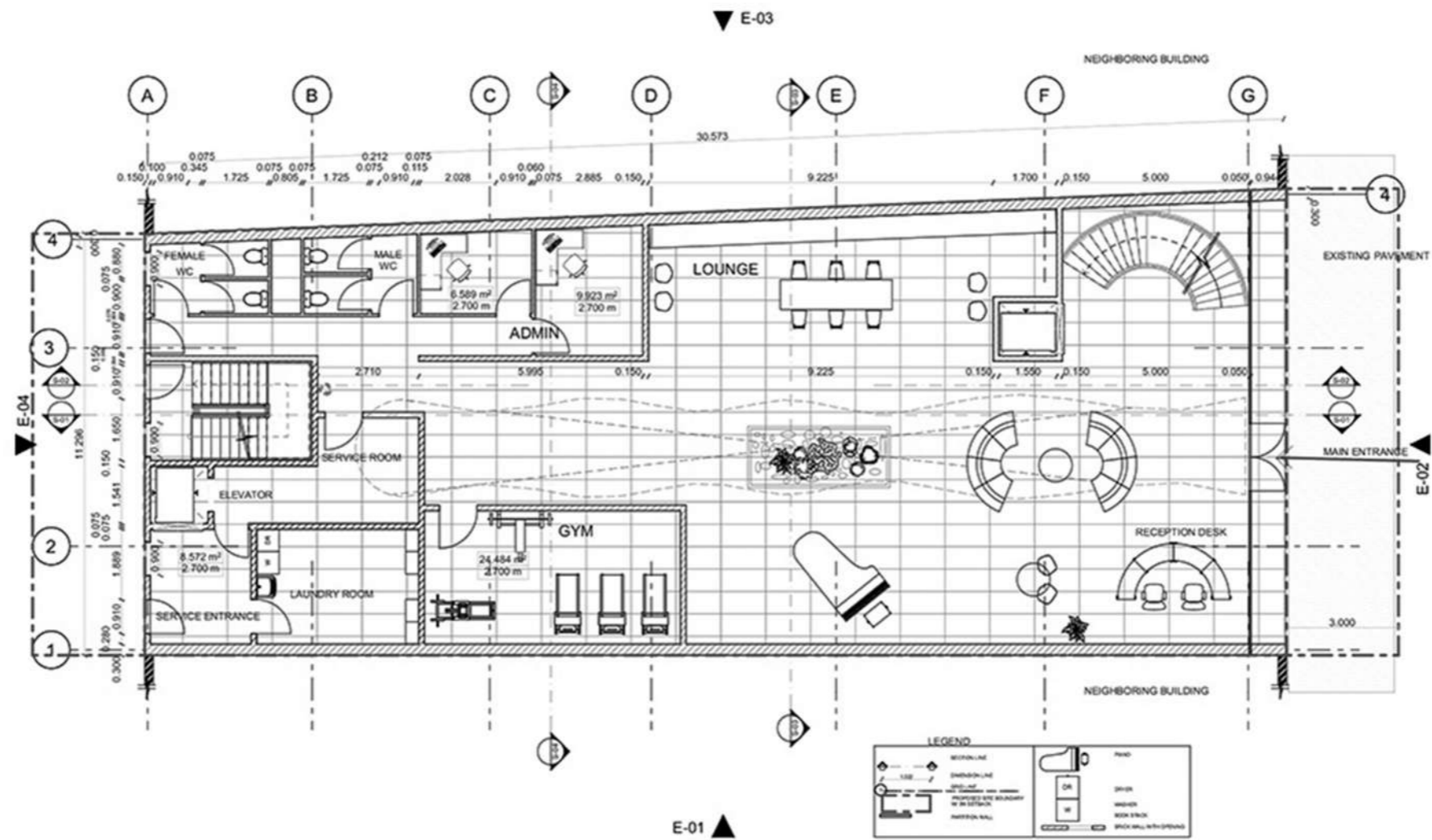
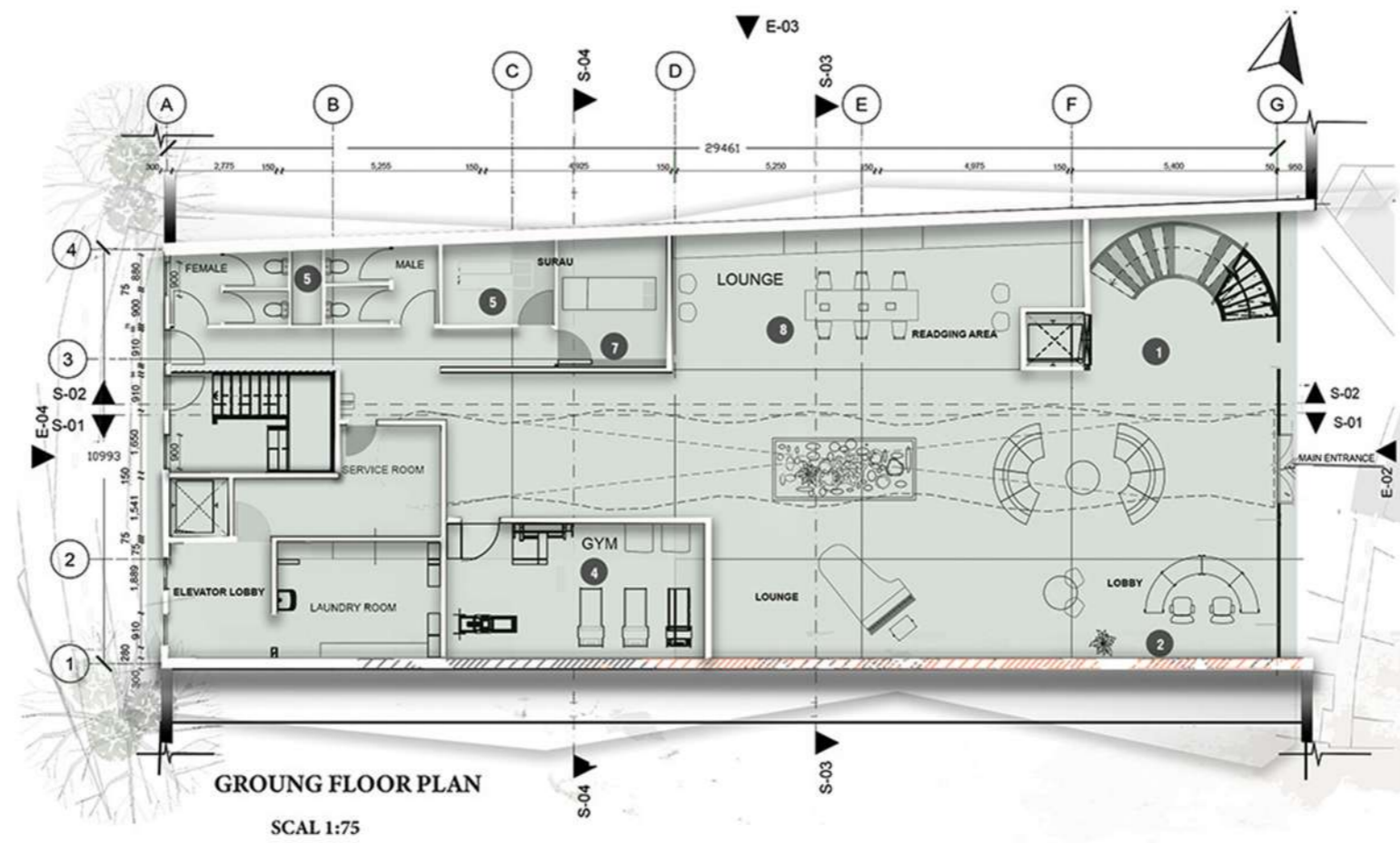
## VEGETATION

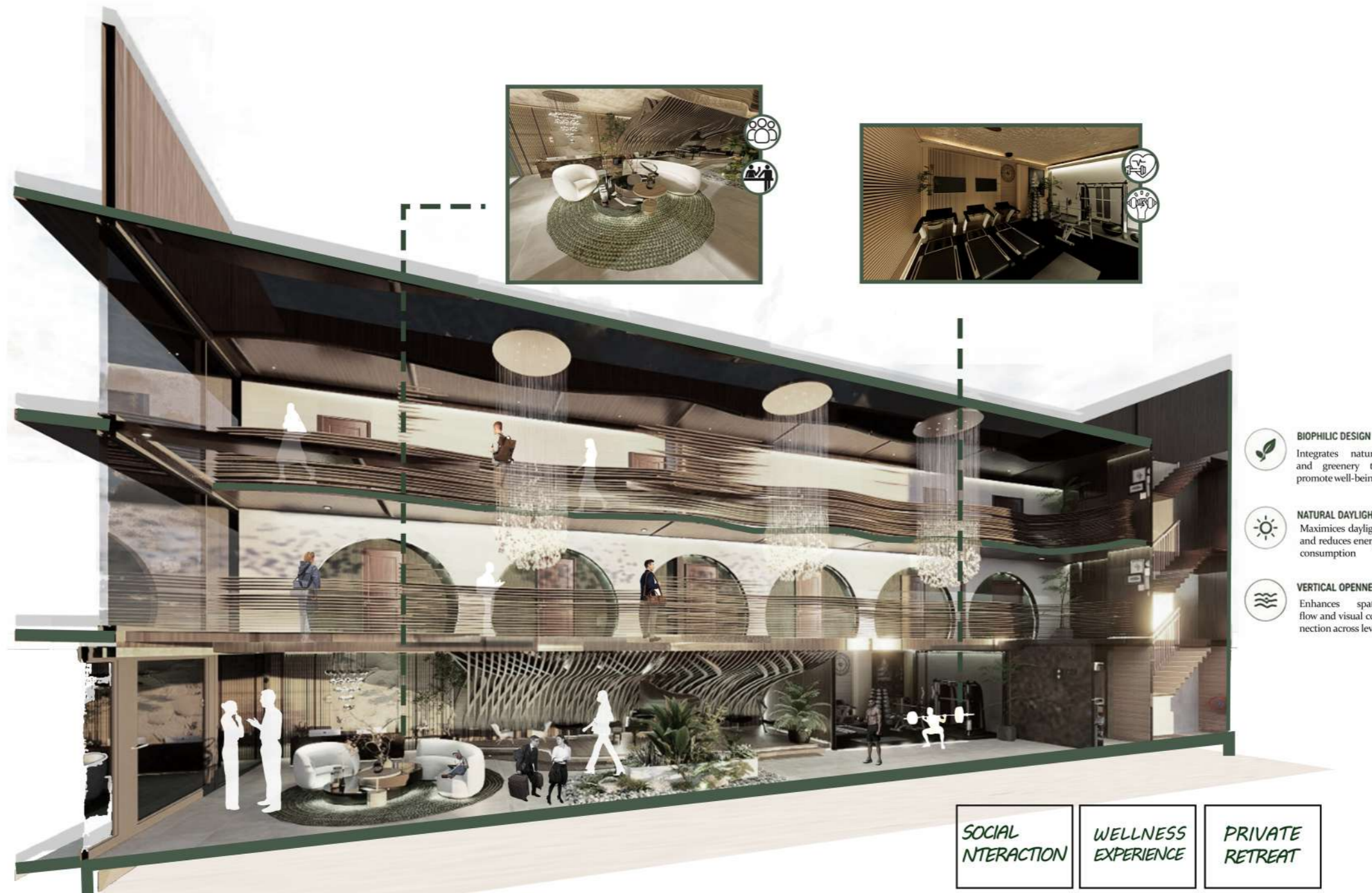
Vegetation is relatively scarce within the site due to the dense urban fabric, with existing greenery mainly confined to street edges and nearby landscaped zones, contributing to limited natural shading and environmental quality.

# DESIGN NARRATIVE

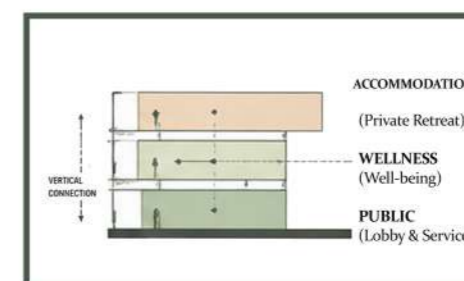
Through repeated offsets, the initial curve develops into layered lines that express rhythm, continuity, and movement. This creates a softer spatial language that supports the hotel's calm and nature-connected atmosphere. Through repeated offsets, the initial curve develops into layered lines that express rhythm, continuity, and movement. This creates a softer spatial language that supports the hotel's calm and nature-connected atmosphere. Through repeated offsets, the initial curve develops into layered lines that express rhythm, continuity, and movement. This creates a softer spatial language that supports the hotel's calm and nature-connected atmosphere.







**The sectional perspective** illustrates the spatial relationship between public, wellness, and accommodation levels within TENANG. Through layered circulation and open visual connections, the design encourages a continuous journey of movement, interaction, relaxation, and retreat. The flowing timber ceiling visually links the different floors while enhancing rhythm, warmth, and spatial continuity throughout the interior environment. Natural light, greenery, and vertical openness strengthen the calm biophilic atmosphere, creating a hospitality experience centered on wellness, comfort, and connection to nature.







ACOUSTIC LOUNGE





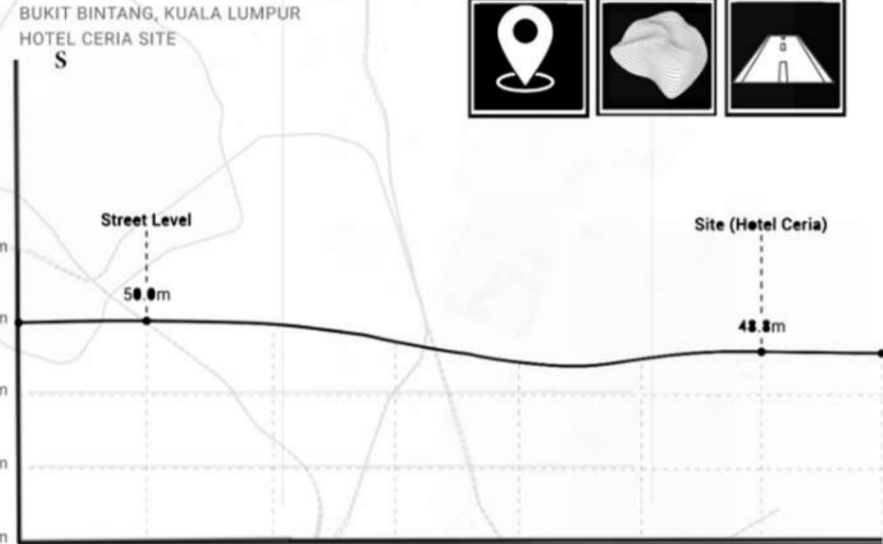




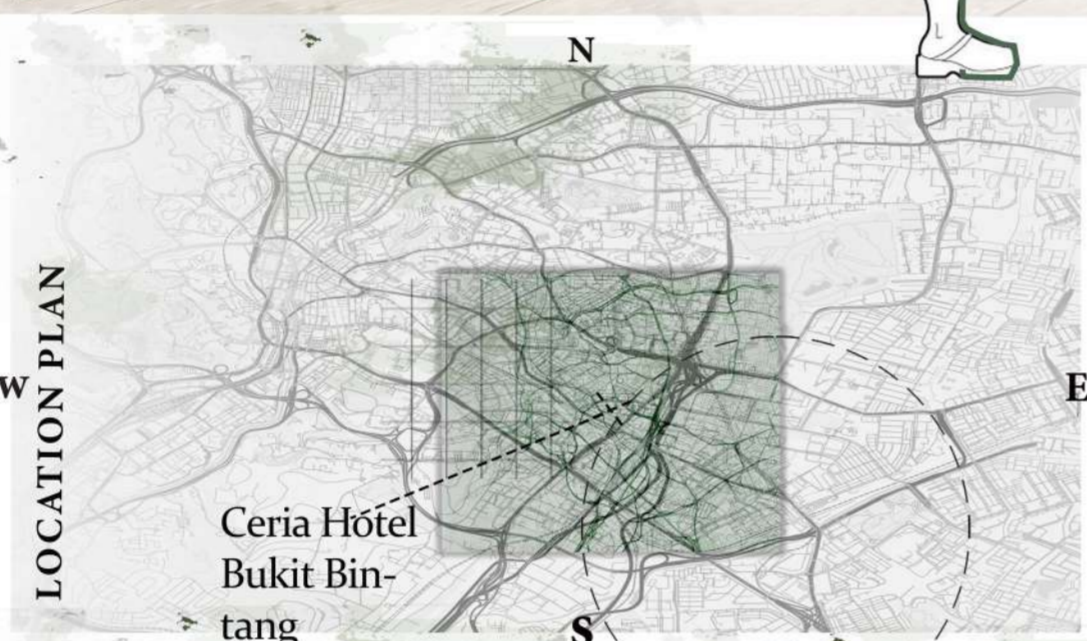
REST ROOM



**TOPOGRAPHY**



**[SITE ANALYSIS]**



Hotel Ceria is an existing compact urban hotel that mainly functions as accommodation. The TENANG proposal enhances it by adding stronger spatial identity, greenery, wellness spaces, and calm interior experiences to create a more sustainable and meaningful hotel environment.

# TENANG

**INTRODUCTION**

TENANG is a sustainable hotel located in Bukit Bintang, Kuala Lumpur, designed as a calm retreat within the busy urban context. The project combines reading, wellness, and social spaces with passive design strategies, greenery, and natural materials to create a comfortable and nature-connected hotel experience. Through its organic forms, open circulation, and biophilic atmosphere, the design supports relaxation, interaction, and user well-being.

**1** The site shows a gentle slope from the street level to the hotel area, dropping from approximately 50.0 m to 48.8 m. This level change supports natural drainage, smooth access, and helps the design integrate with the existing urban terrain.

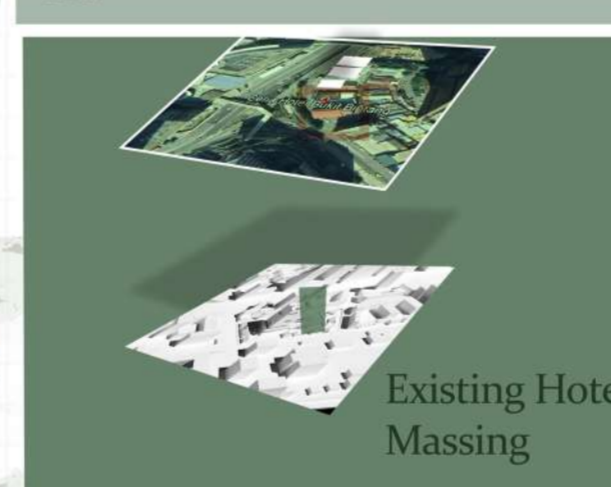
**2** The project applies sustainable strategies through natural ventilation, daylighting, shading, and greenery to improve comfort, reduce heat, and strengthen the connection between users and nature.

**3** The narrative collage shows how TENANG responds to Bukit Bintang's urban context by combining movement, greenery, and spatial layering. It presents the hotel as a calm retreat within the city, connecting users to nature while maintaining strong urban accessibility.



**Bukit Bintang, Kuala Lumpur**

Located in Bukit Bintang, Kuala Lumpur, the hotel sits within a busy commercial area with strong accessibility and city exposure. The design responds by adding greenery, shading, and calm interior spaces to create a relaxing retreat within the urban context.



<b>BIOPHILIC DESIGN</b> Integrates greenery and natural textures to create a calm connection with nature.	<b>PASSIVE COMFORT</b> Uses daylight, ventilation, and shading to improve comfort naturally.	<b>WELLNESS EXPERIENCE</b> Supports relaxation, reading, fitness, and mental well-being.	<b>URBAN RETREAT</b> Creates a peaceful hotel escape within the busy Bukit Bintang context.
--	---	---	--

<b>READING</b> Inspiration & knowledge Integrates greenery and natural textures to create a calm connection with nature.	<b>NATURE</b> Greenery & connection Integrates greenery and natural textures to create a calm connection with nature.	<b>WELLNESS</b> Health & relaxation Integrates greenery and natural textures to create a calm connection with nature.	<b>CALM STAY</b> Comfort & retreat Integrates greenery and natural textures to create a calm connection with nature.
--	---	---	--

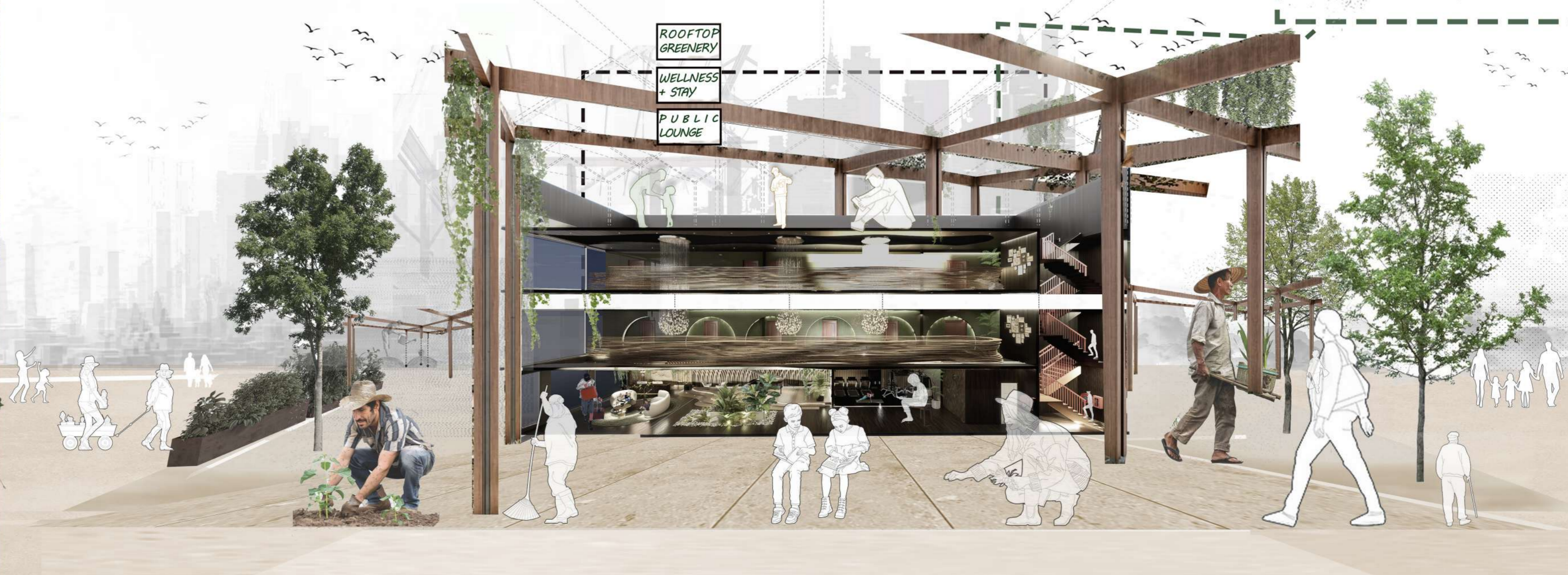
A sustainable hotel experience that connects people with nature, supports well-being, and creates a calm retreat within the city.

**SECTIONAL EXPERIENCE**

The section perspective illustrates the relationship between levels, activities, and user movement, showing how the hotel experience flows through connected social, wellness, and accommodation spaces.

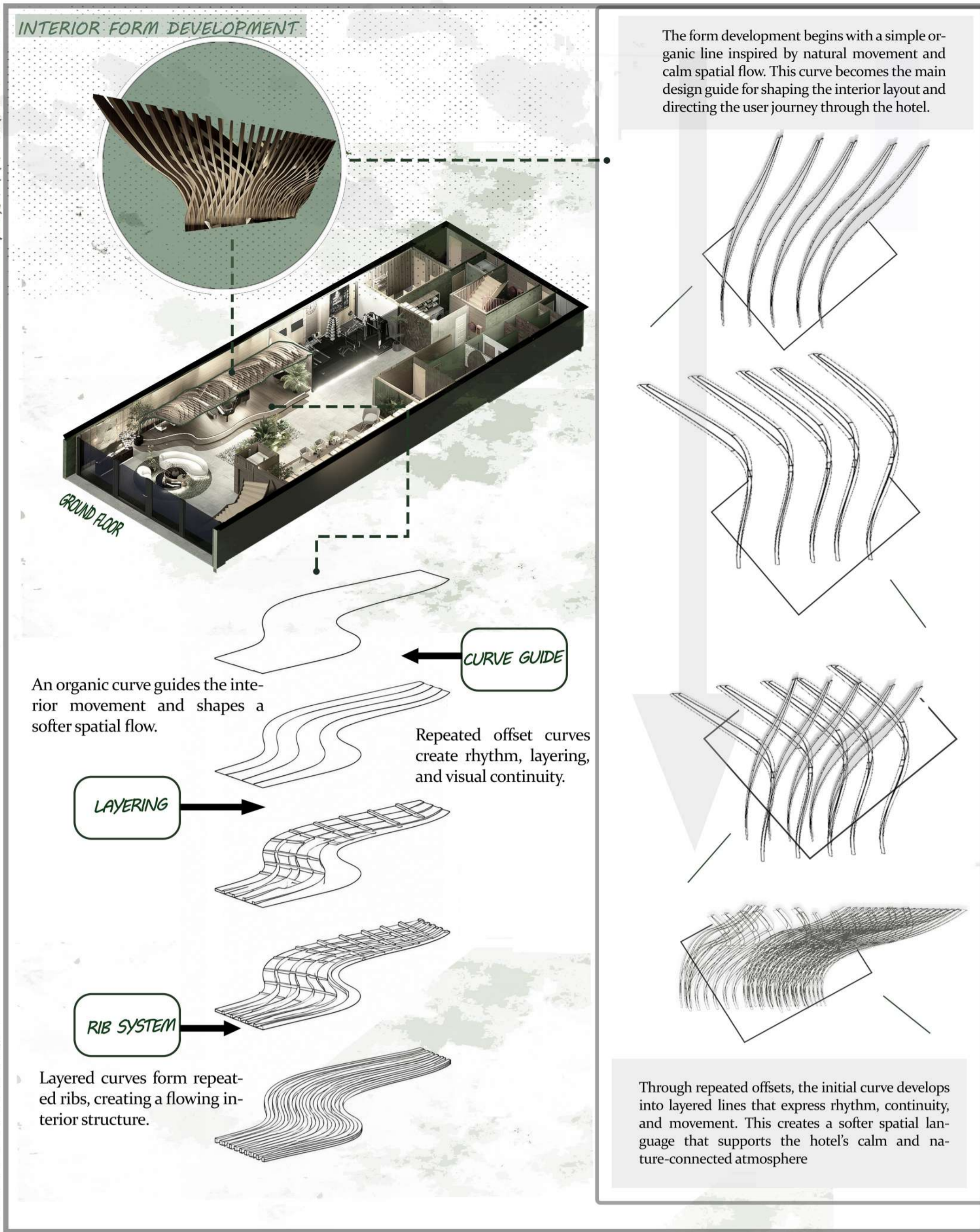
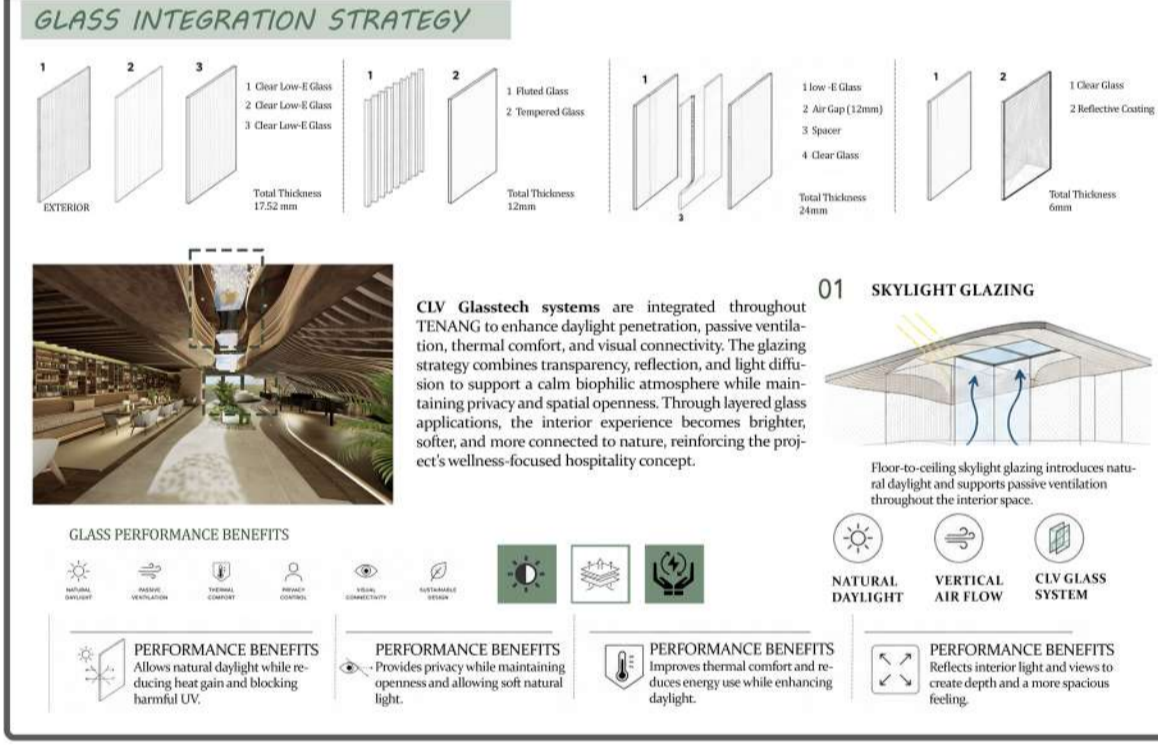
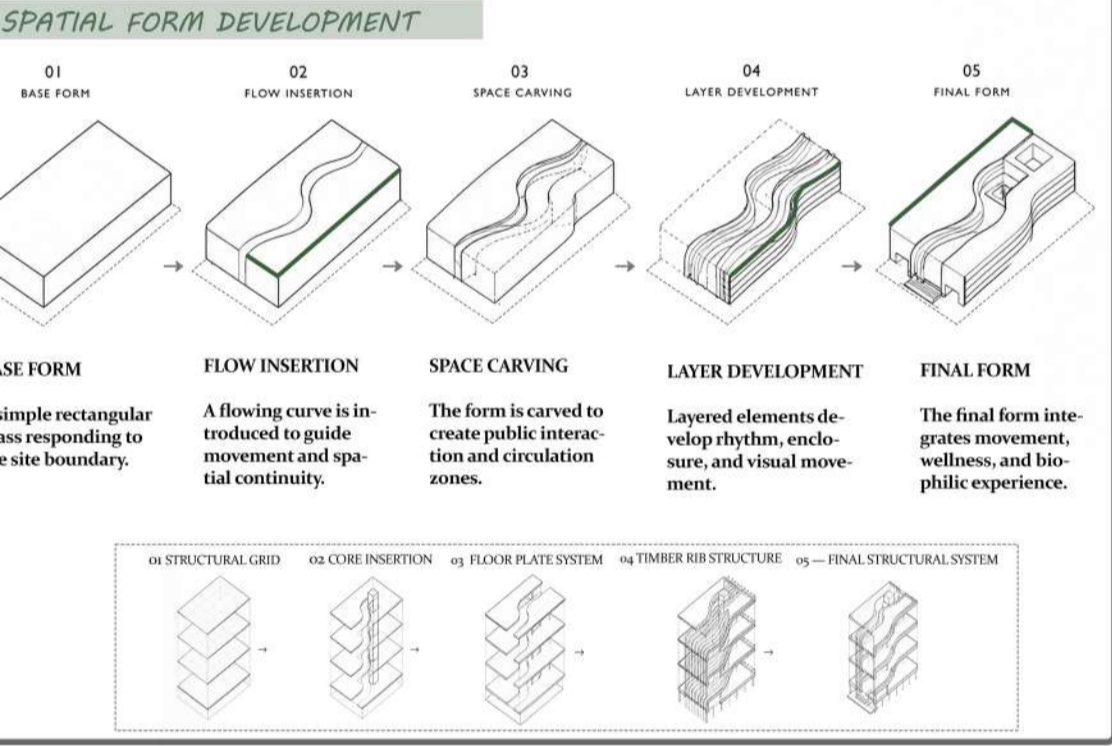
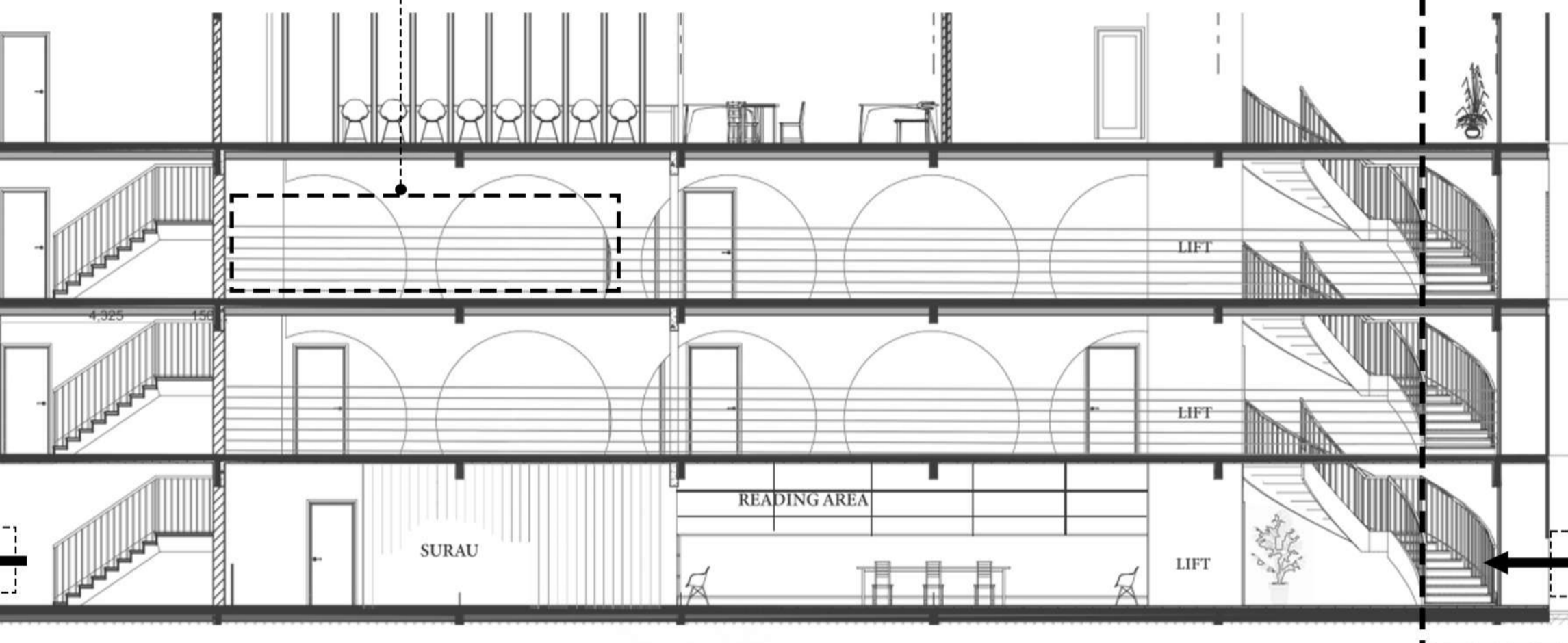
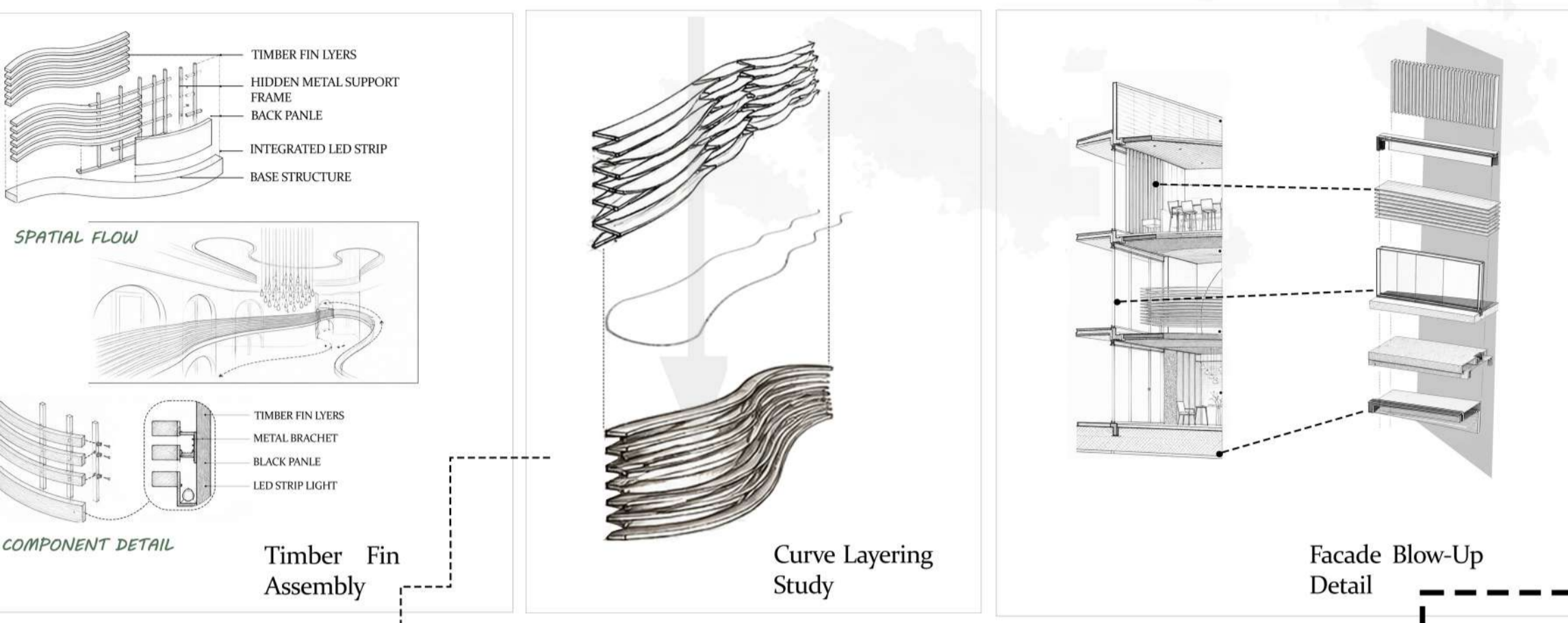


- Arrival
- Cognitive Space
- Social Interaction
- Physical Well-being
- Restoration
- Audio-Visual Zone
- Service Standard
- Accommodation





ORGANIC FLOW LOUNGE



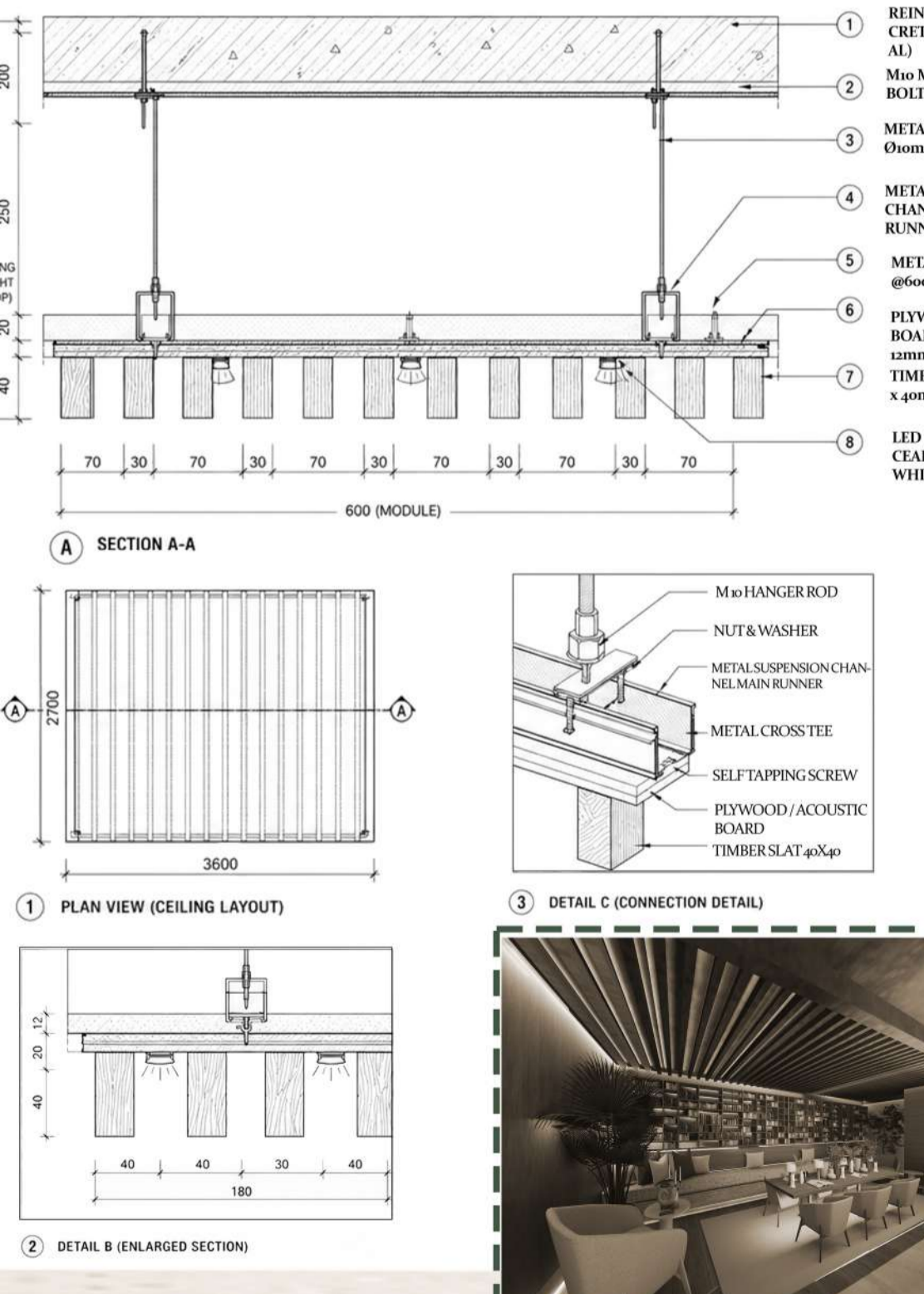
ORGANIC FLOW LOUNGE

**NATURAL TIMBER**  
 Warmth and rhythm  
 Natural timber creates warmth and rhythm through the repeated rib form. It softens the interior and supports TENANG's calm, nature-connected atmosphere.

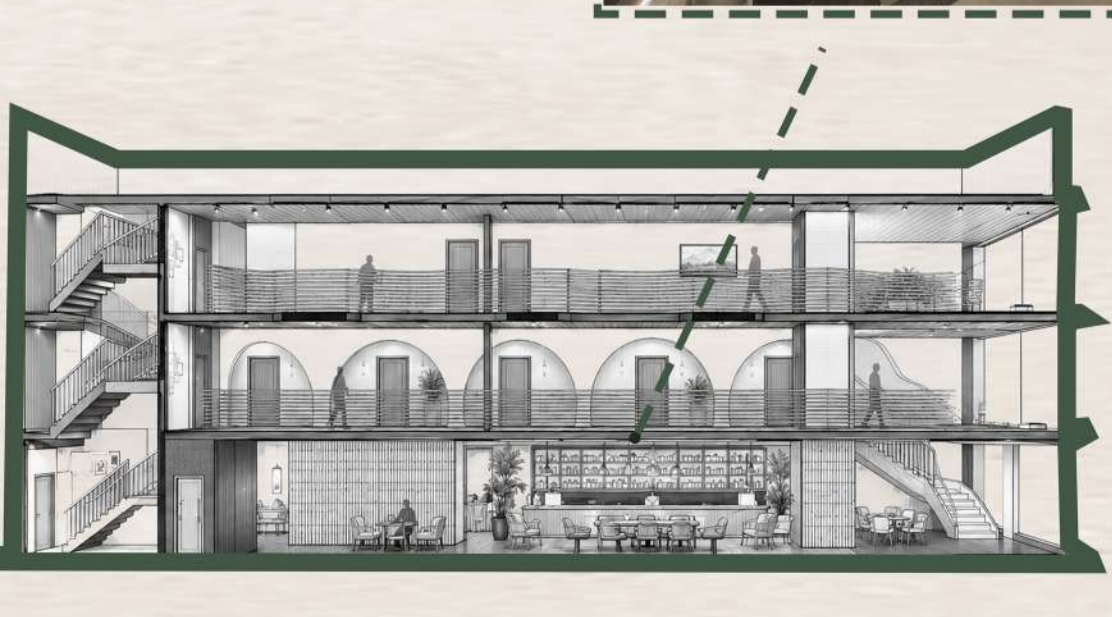
**INDOOR GREENERY**  
 Biophilic connection  
 Indoor greenery brings nature into the hotel and strengthens the biophilic experience. It adds freshness, comfort, and a restorative feeling to the space.

**STONE TEXTURE**  
 Natural grounding

TIMBER SLATTED CEILING DETAIL

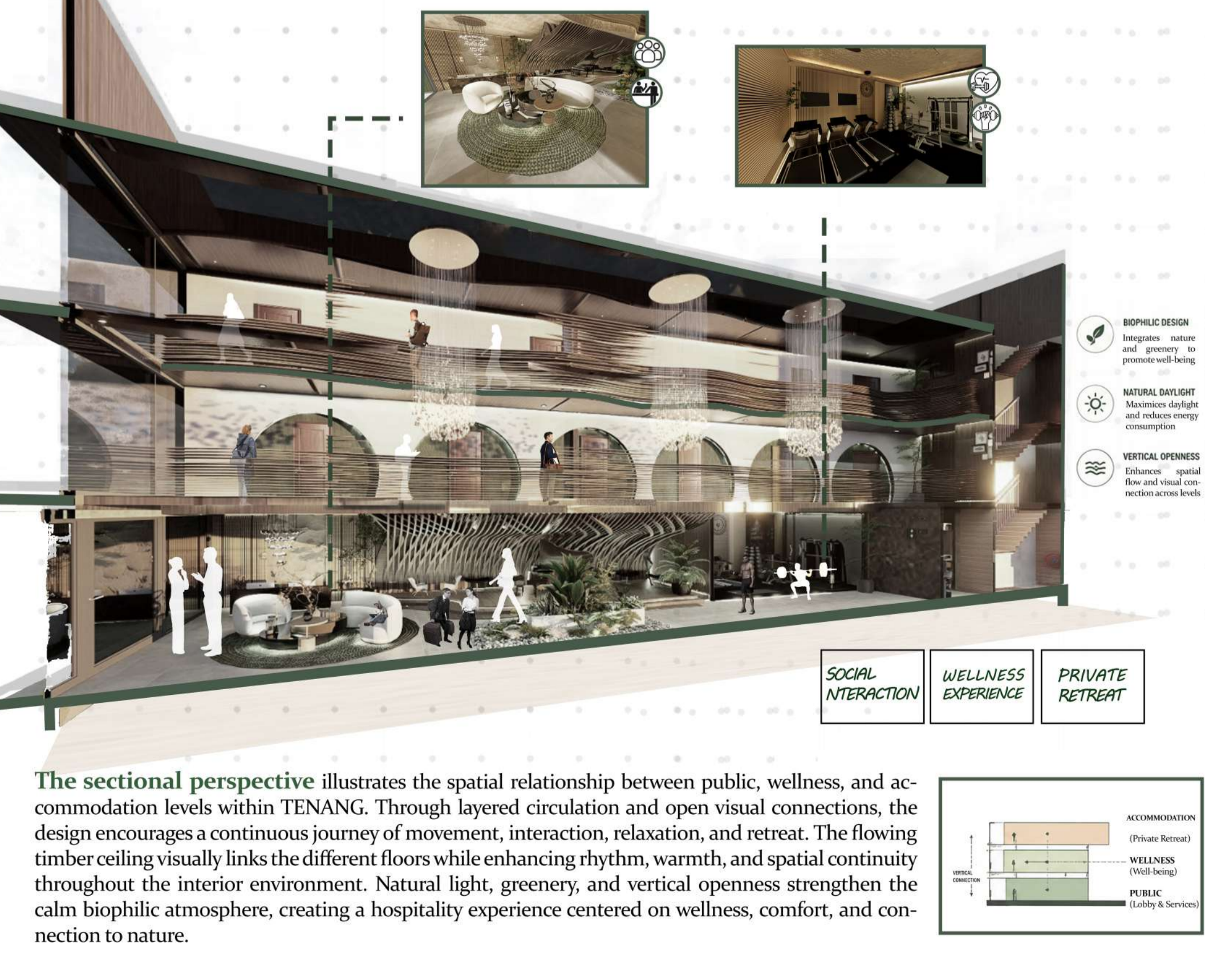


AMBIENT GLOW    SPATIAL RHYTHM    BIOPHILIC CALM    NATURAL WARMTH



**SOCIAL INTERACTION**  
**READING & FOCUS**  
**REST & WELL-BEING**

The ceiling detail enhances the public lounge through layered timber slats, concealed lighting, and a dark ceiling base. This combination creates a warm hospitality atmosphere while supporting visual rhythm, comfort, and a calm spatial





READING LOUNGE

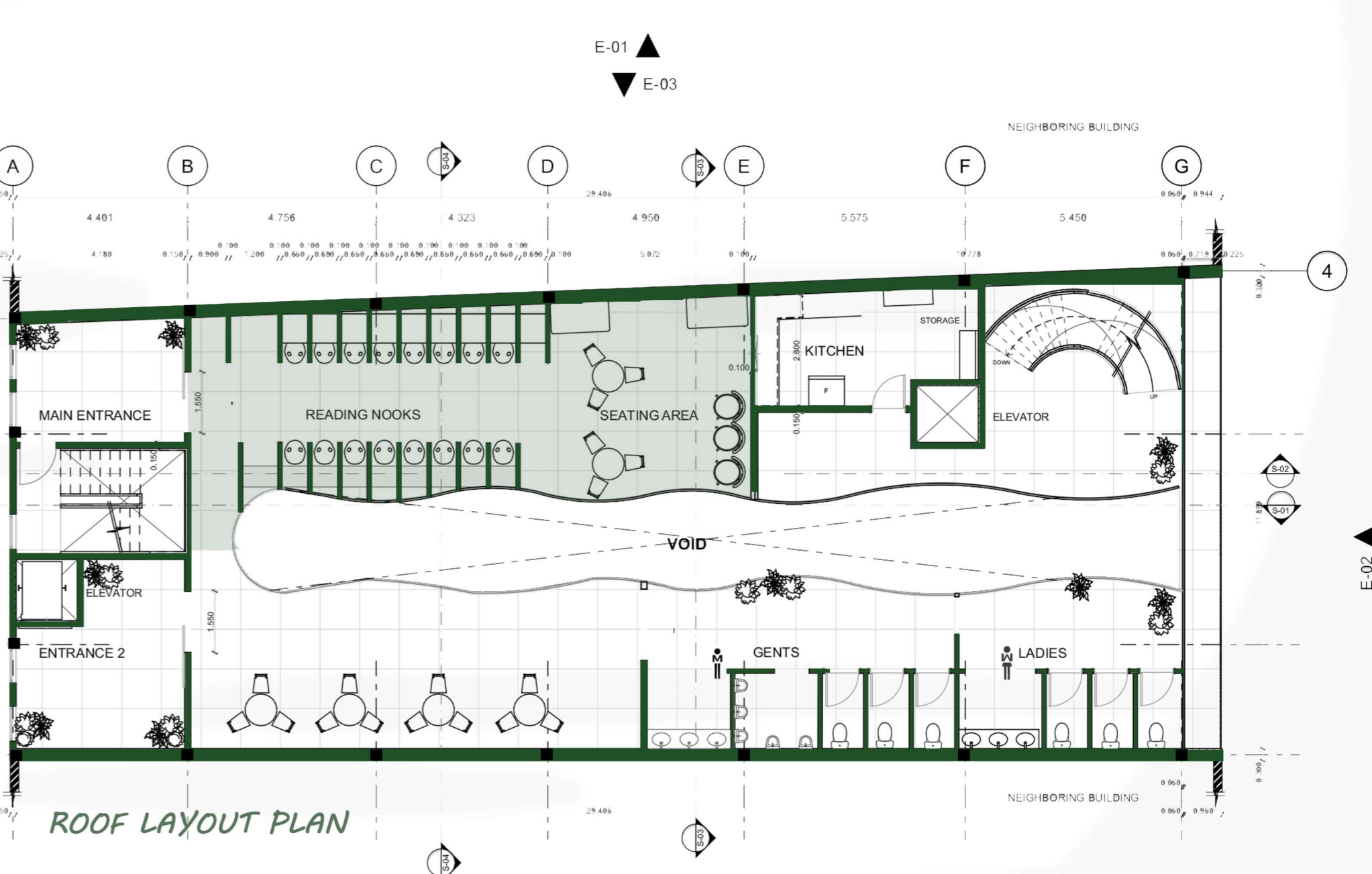
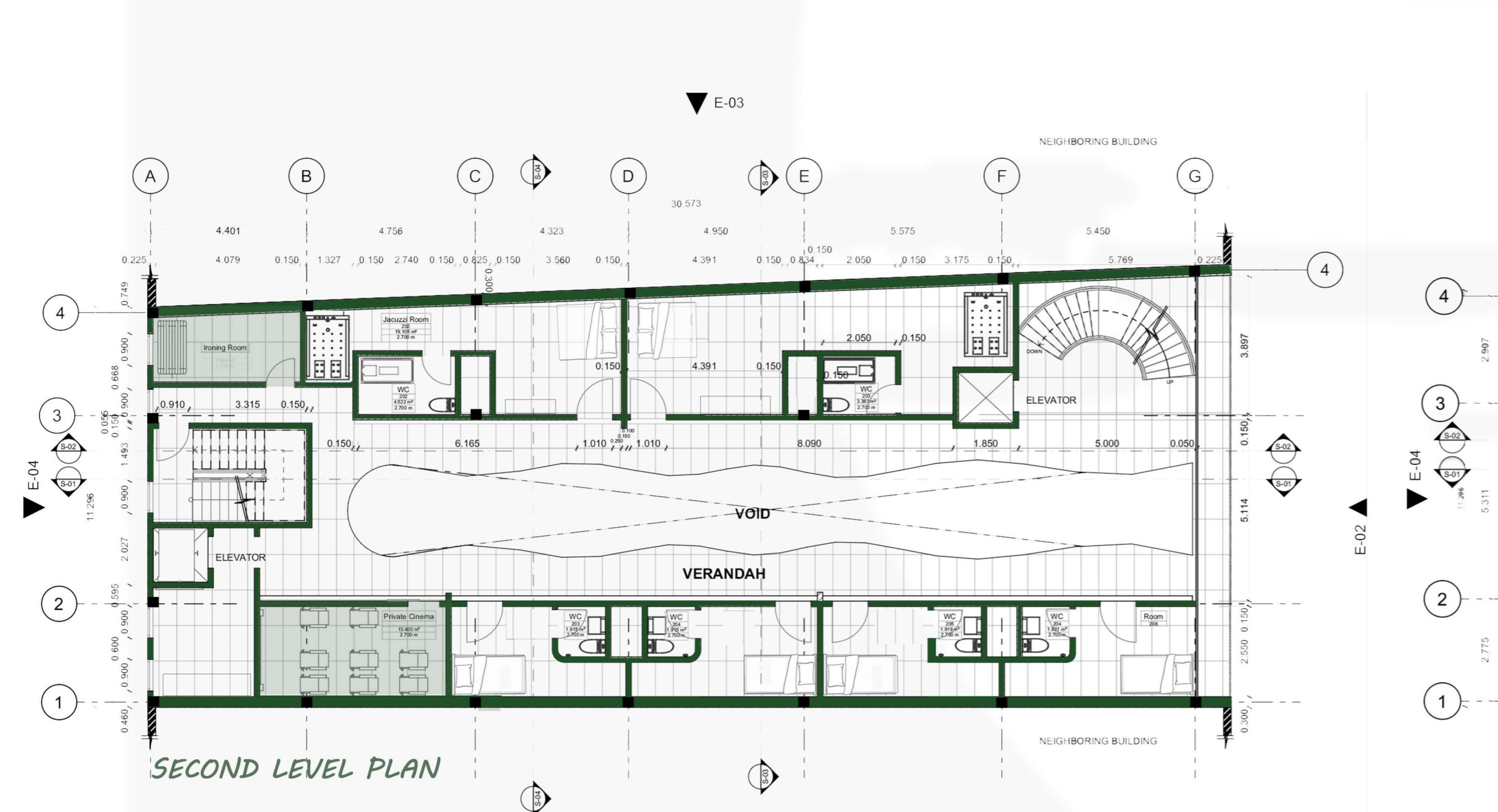
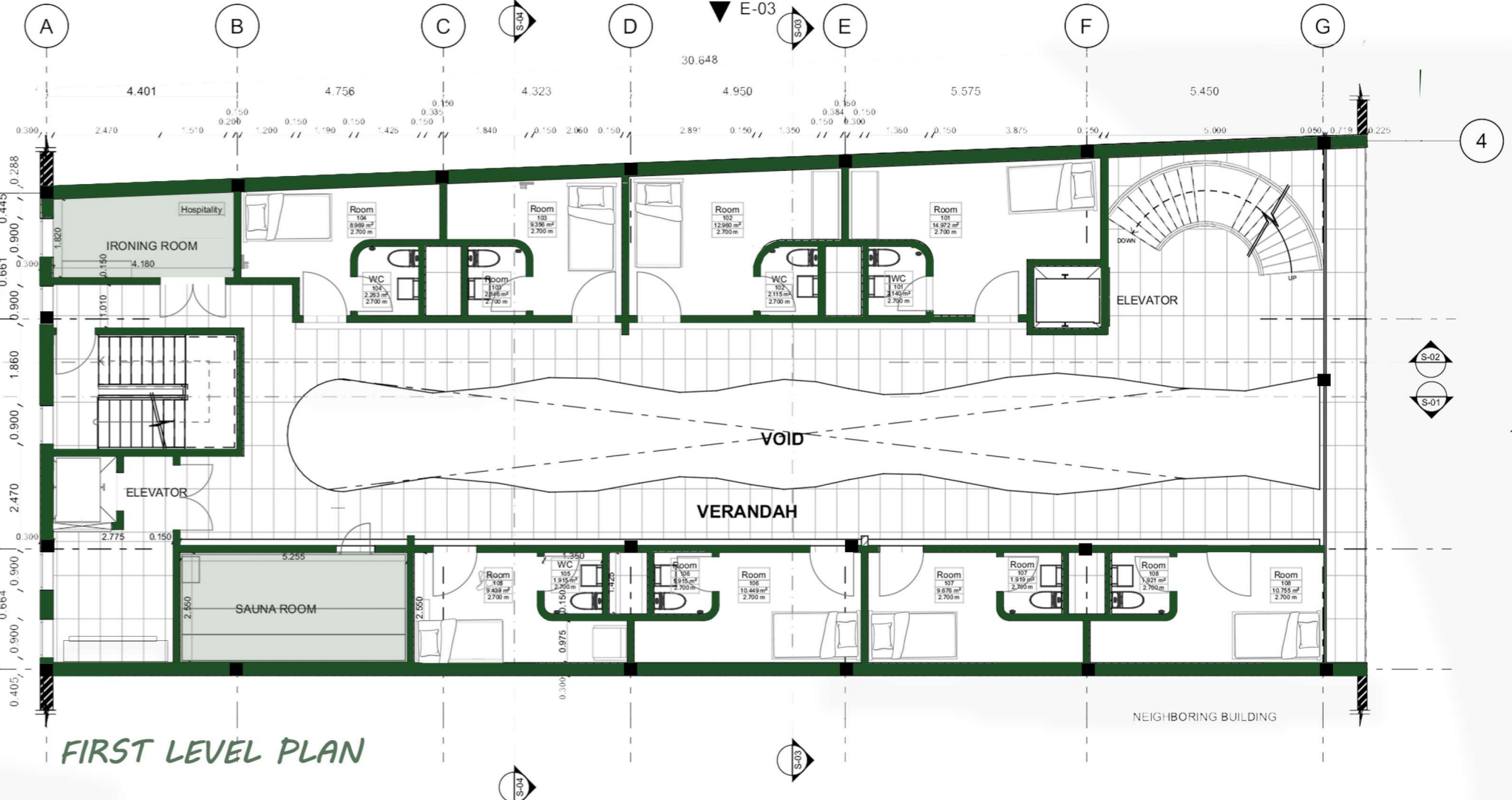
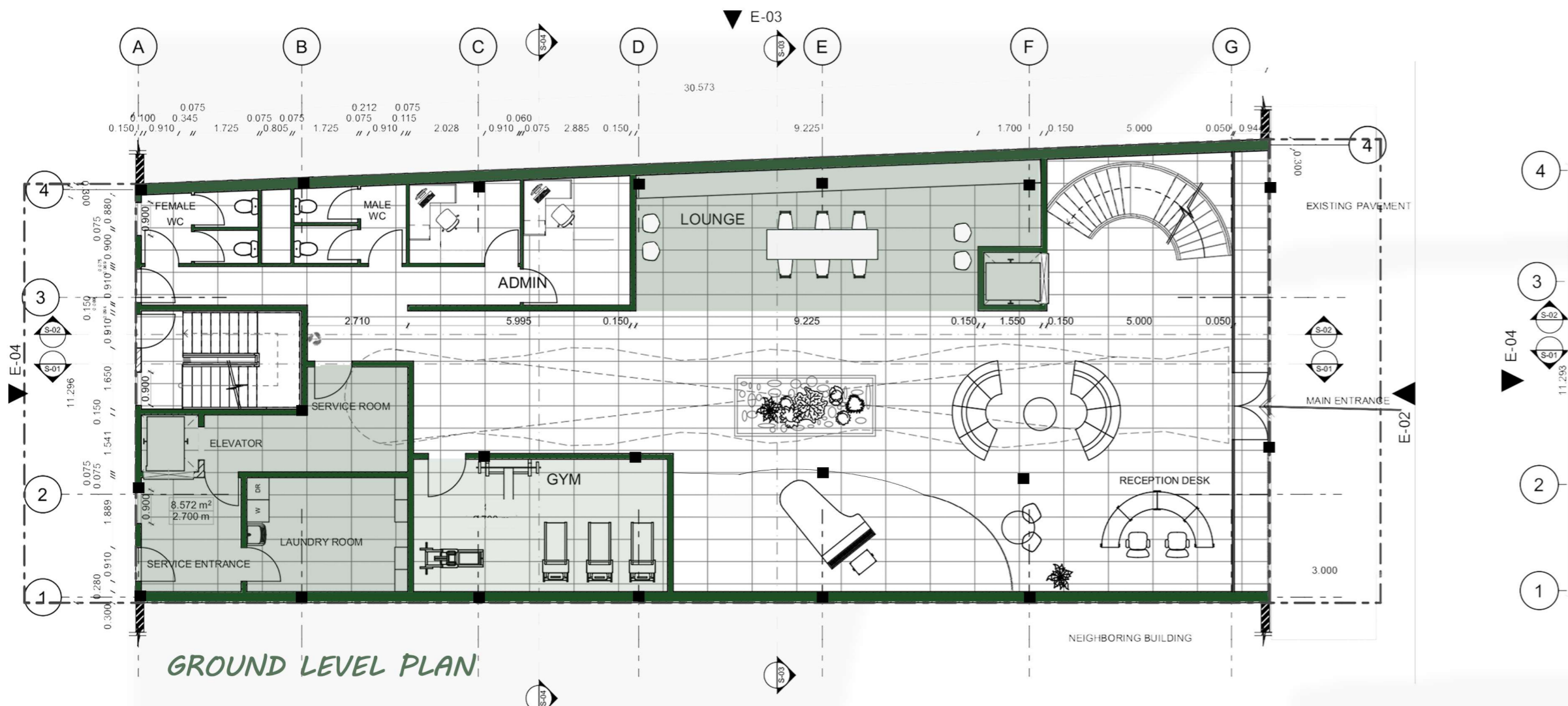
WELLNESS DESIGN STRATEGY

Warm materials and soft lighting create a calm reading environment that supports relaxation, focus, and comfort.

A quiet wellness retreat shaped by timber warmth, soft ambient lighting, and calming spatial experience.



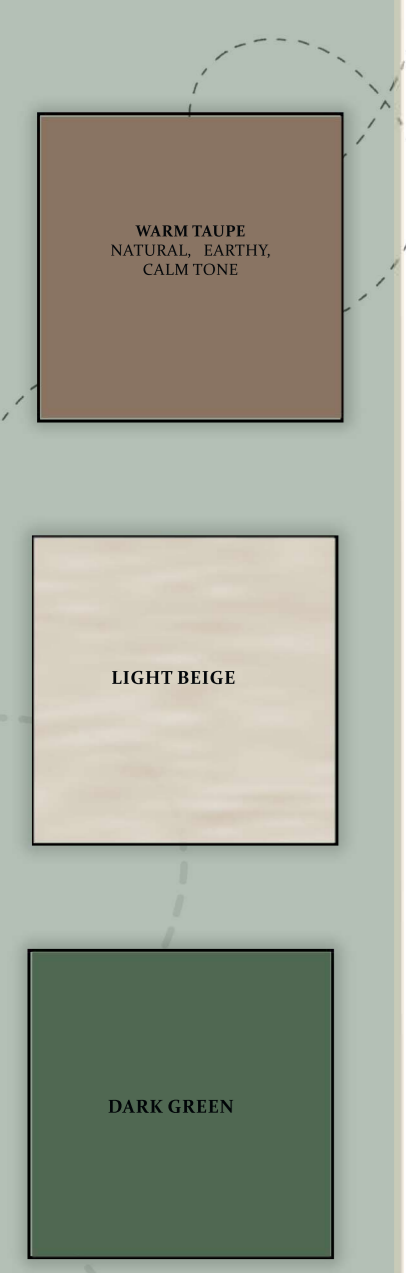
Natural materials and low-energy lighting support a responsible interior design while maintaining comfort, warmth, and a calm atmosphere. Layered circulation and wellness-focused spaces create a balanced hospitality experience that encourages relaxation, privacy, and social connection throughout the interior environment.



REST ROOM



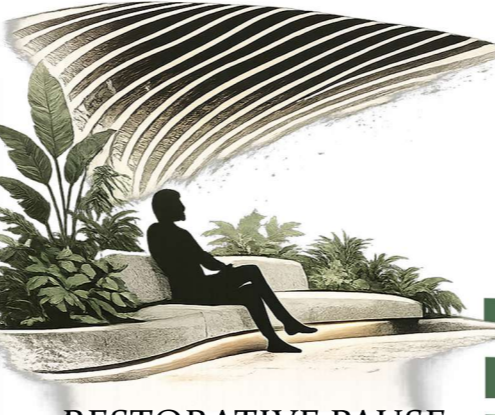
SPA ROOM



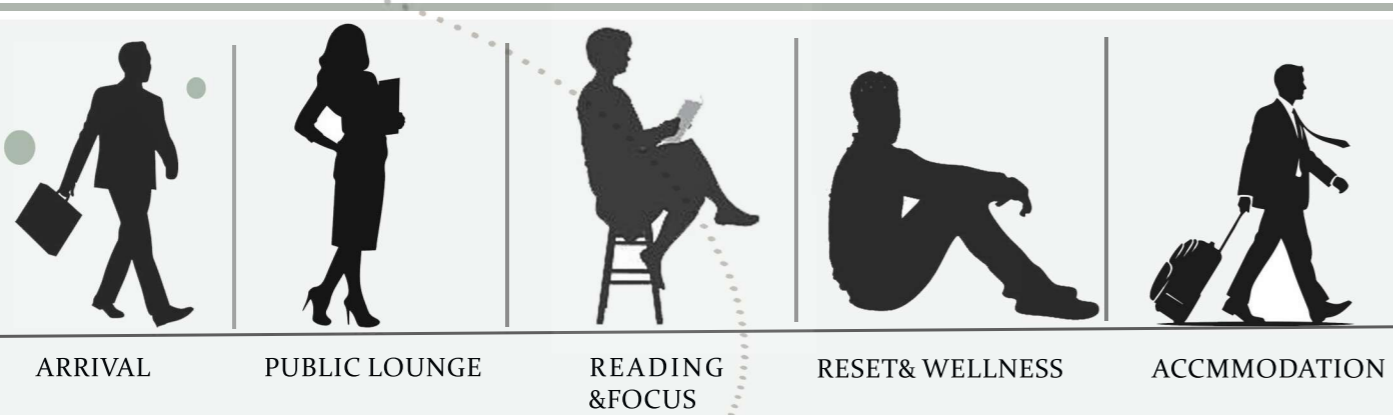
Natural materials and low-energy lighting support a responsible interior design while maintaining comfort, warmth, and calm atmosphere.



**SPATIAL JOURNEY**  
establishes a progressive hospitality journey, transitioning users from active arrival and public lounge areas toward quieter zones of reading, wellness, and accommodation. This spatial sequence supports a balanced guest experience by organizing movement, social interaction, focus, and rest within a calm interior environment.



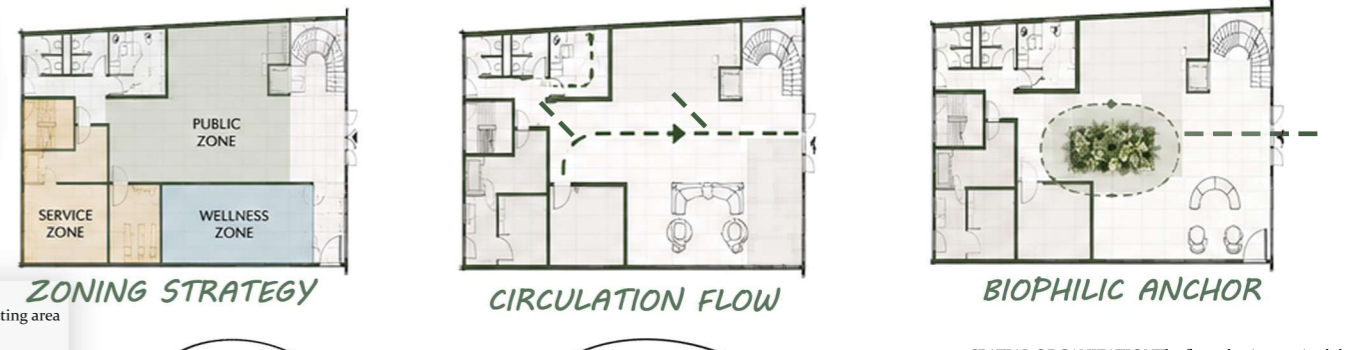
RESTORATIVE PAUSE



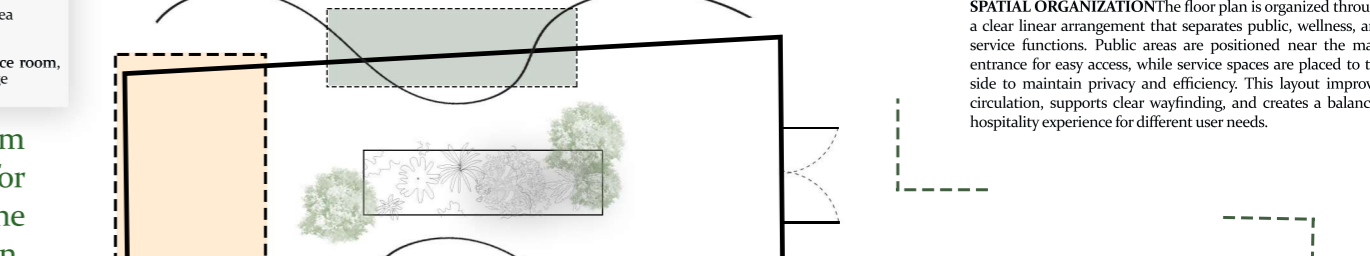
**ATMOSPHERIC EXPERIENCE**  
The experience flow is supported by organic timber paths, indoor greenery, soft lighting, and natural textures. These elements guide movement through the hotel while creating a warm, biophilic atmosphere that supports comfort and well-being.



**TENANG EXPERIENCE**  
A calm hospitality journey supported by natural materials, greenery, and warm light.



**GUEST TRANSITION**  
TENANG creates a gradual transition from active public spaces into quieter areas for reading, wellness, and accommodation. The plan guides users through clear circulation, allowing each zone to feel connected while still supporting different levels of activity, privacy, and relaxation.



**DESIGN EXPERIENCE** The integration of greenery, soft movement paths, and natural materials transforms the plan into a calm interior journey. The central biophilic element acts as a visual anchor, while timber textures and warm lighting create comfort and continuity. Together, these elements strengthen TENANG's restorative identity and create a more welcoming guest experience.