

# **ARSENAL MEMORY PARK**

*B. Architectural Design Category*

*author\_ Bc.Daniela Majáková*

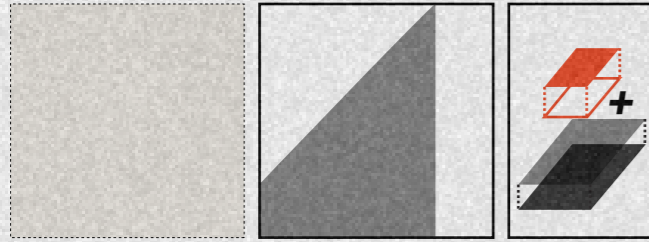
*supervisor\_ Ing.arch.Pavol Paňák*

*university: Faculty of Architecture and Design, STU, Bratislava, Slovakia*

*2026*

# CONCEPT

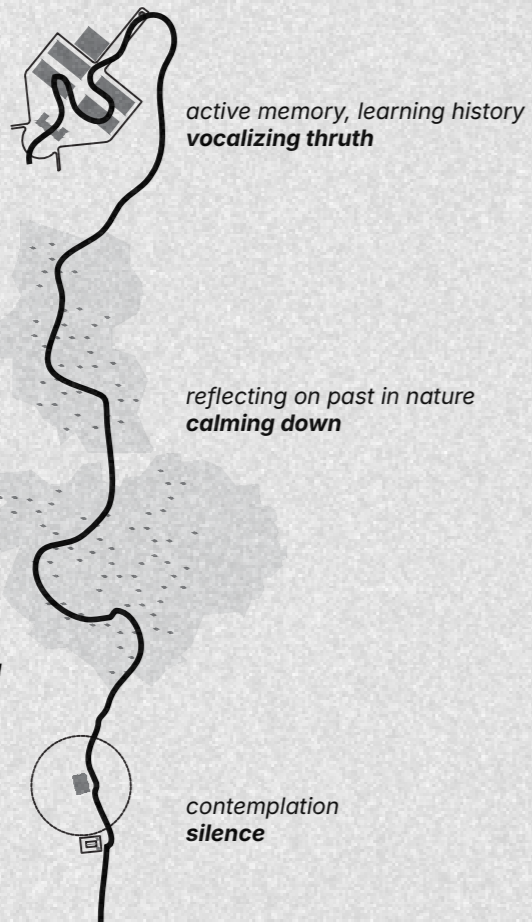
Symbols should never overpower the emotions they are meant to evoke. They must remain quiet offering a space of silence in which reflection becomes possible. The simple yet powerful symbolism of white runs throughout the project, telling different stories, unifying the site, revealing its history, and marking it through the contrast with its tragic past. Nature, shadow, and light play a crucial role in this narrative: they speak of the shadows within human nature, of dark periods in history, but also of light as truth, hope, and the possibility of renewal. A pragmatic yet deeply conceptual decision is the choice to insert new volumes into the existing structures rather than designing entirely new ones. The old barracks represent something that continues to influence the present, the new mass, yet they exist only as a preserved frame. They function like time itself: a vessel in which the past can be remembered, learned from, and transformed into the foundation for a better future.



## THEMATIC ZONES

Areal is divided into 3 main zones according to memorial character, going from active to quiet place to reflect.

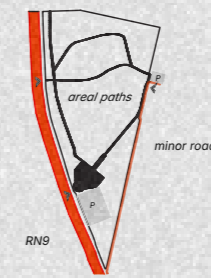
### 1 barracks



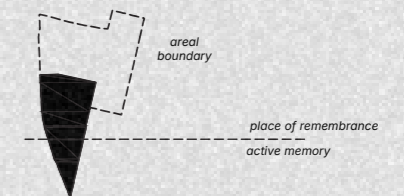
SITEPLAN - INTERVENTION ZONE

## BILANCE

|                     |   |         |
|---------------------|---|---------|
| total area          | 115,5 ha                                  |         |
| thematic zones      | 1 barracks                                | 7ha     |
|                     | 2 háj                                     | 30 ha   |
|                     | 3 memorial zone                           | 0,21 ha |
| +parking facilities | 1000 lots (maintained grass parking area) | 3ha     |
|                     | +150 lots (gravel-stabilized area)        | 0,45ha  |



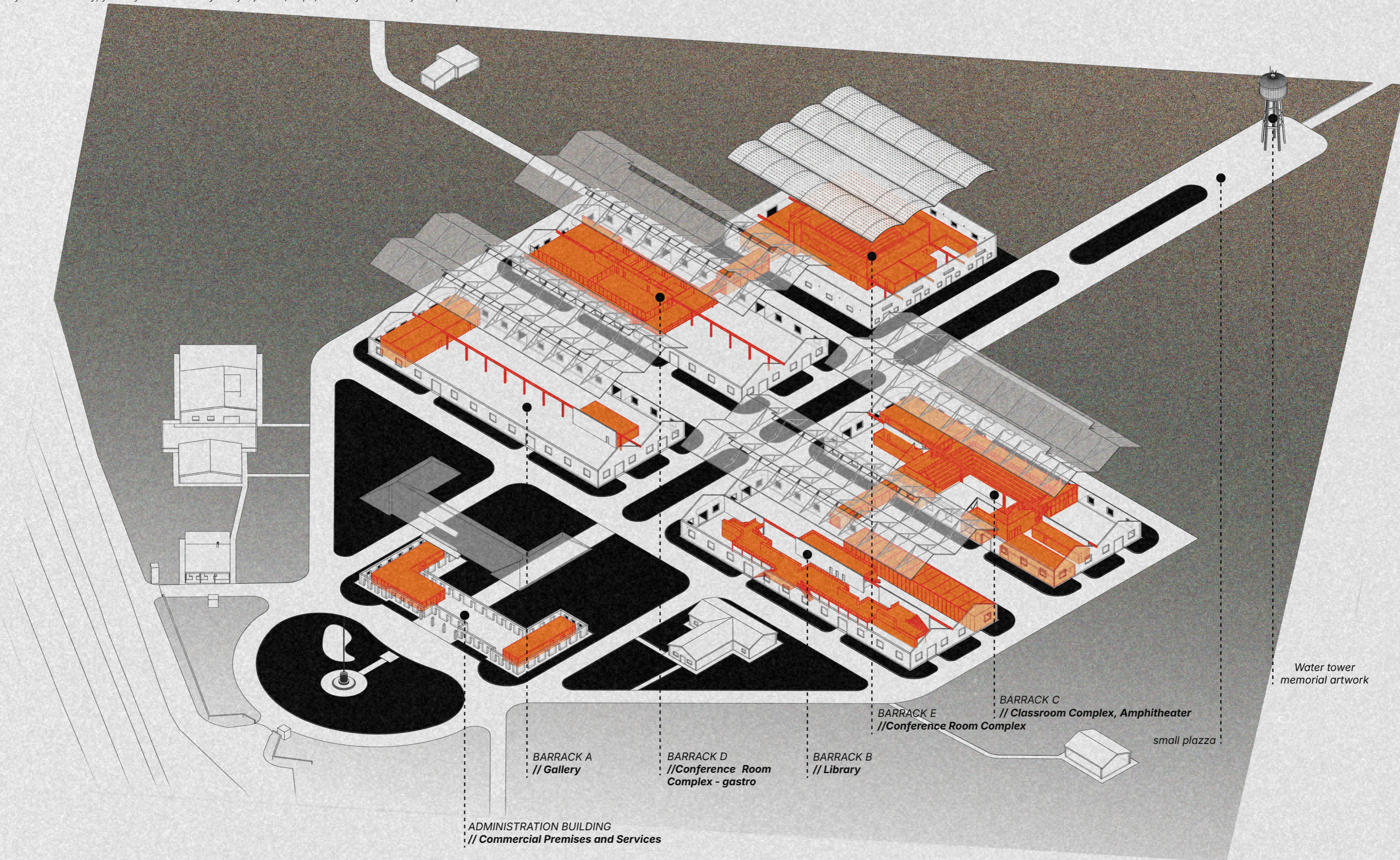
TRAFFIC DIAGRAM



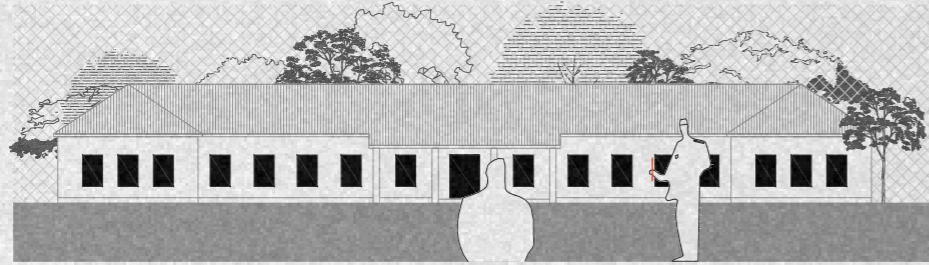
FUNCTION DISTRIBUTION

# 1 BARRACKS

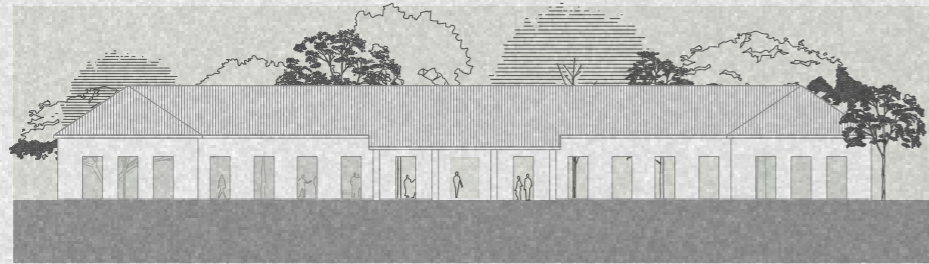
By inserting new functions into the original barracks buildings in the form of architectural infills, we symbolically express that just as the present learns from history and is shaped by it, the barracks themselves form the current character of the site and influence its architecture and environment. The new interventions do not attempt to overwrite history; instead, they enter it with a reformatory character — as a presence that brings new hope and understanding. The existing buildings act as a container, a memory, a vessel of meaning. The infills deliberately distance themselves from their mass: they introduce a new principle while still respecting the limits and determinants of the original architecture. In the same way, visitors to these buildings become aware of history and of the consequences of actions that continue to shape the lives of survivors today, yet they simultaneously call for justice, hope, and a life in which justice is present.



FORMER ADMINISTRATION BUILDING// Commercial Premises and Services

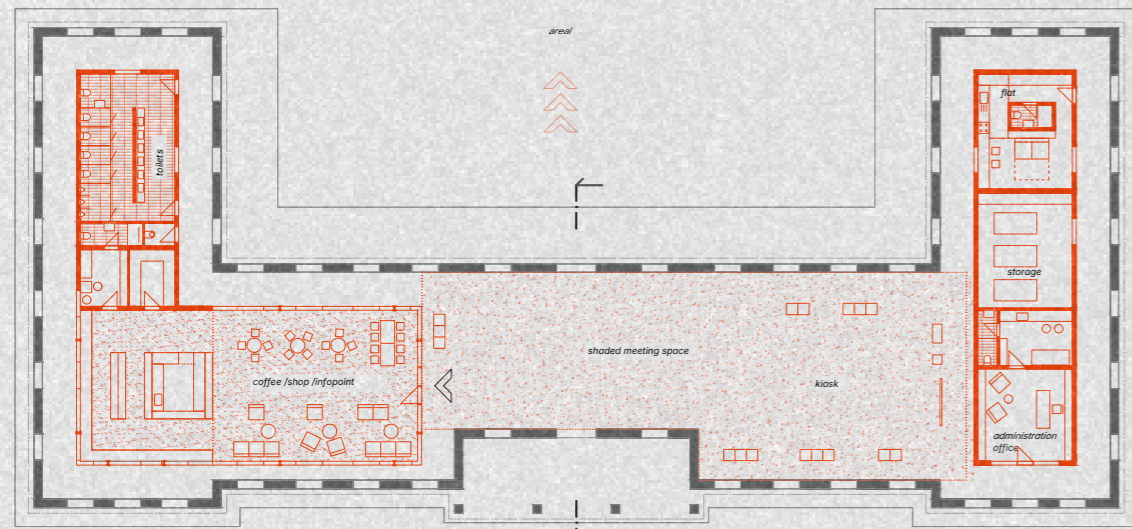


monitored, restricted military area = visual and physical block

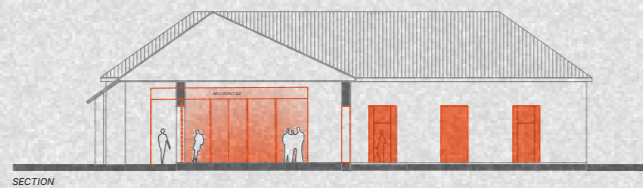


opening of area through window openings- permeability physicaly and visualy, as symbol of uncovered truthh

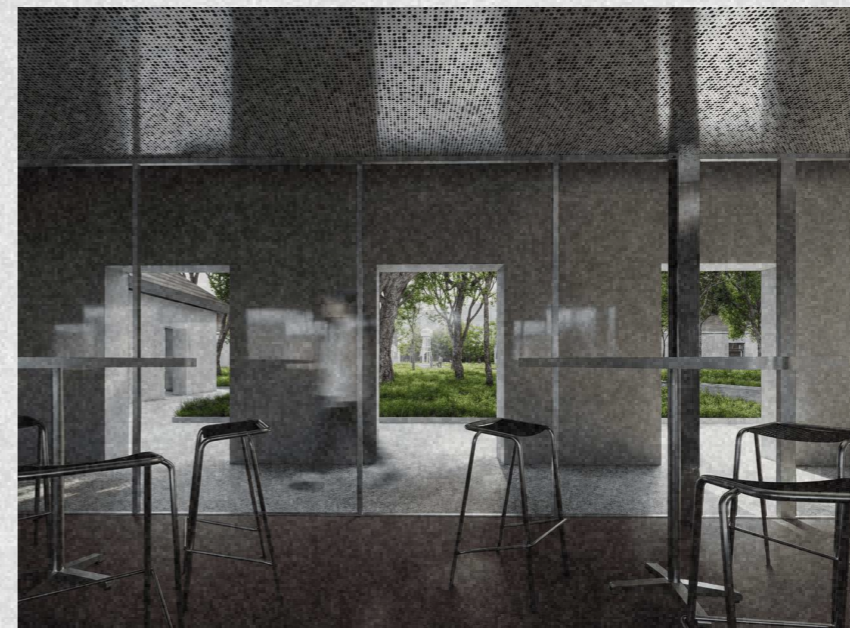
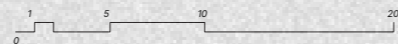
Concept



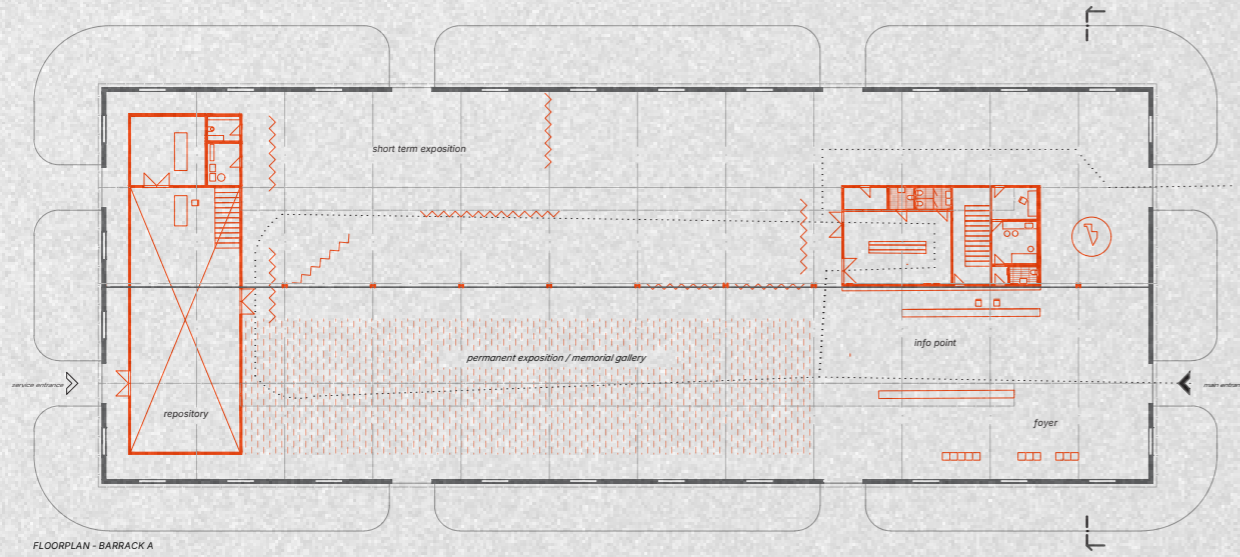
FLOORPLAN



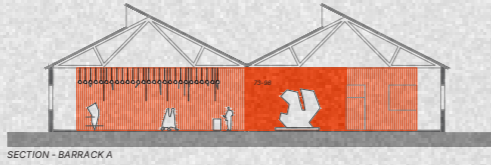
SECTION



BARRACK A // Gallery



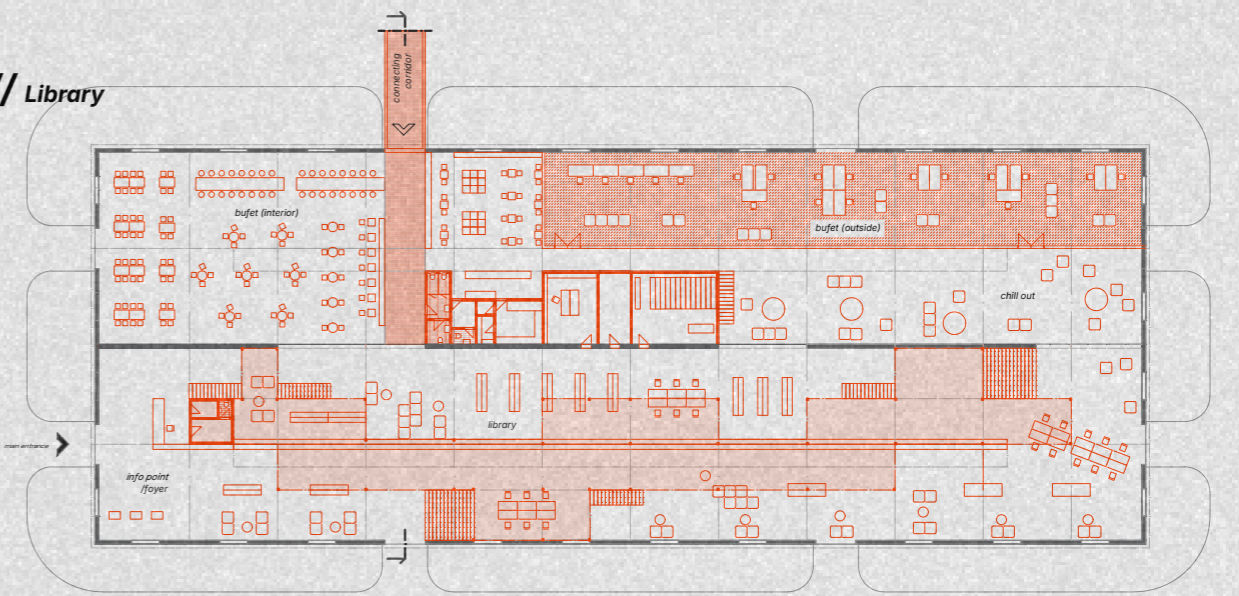
FLOORPLAN - BARRACK A



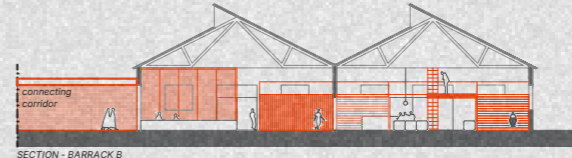
SECTION - BARRACK A



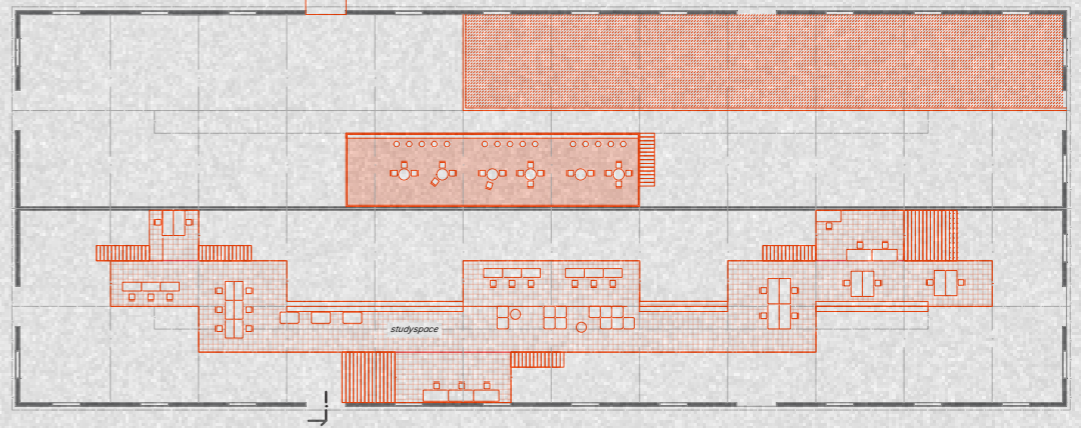
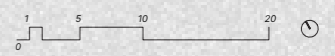
BARRACK B // Library



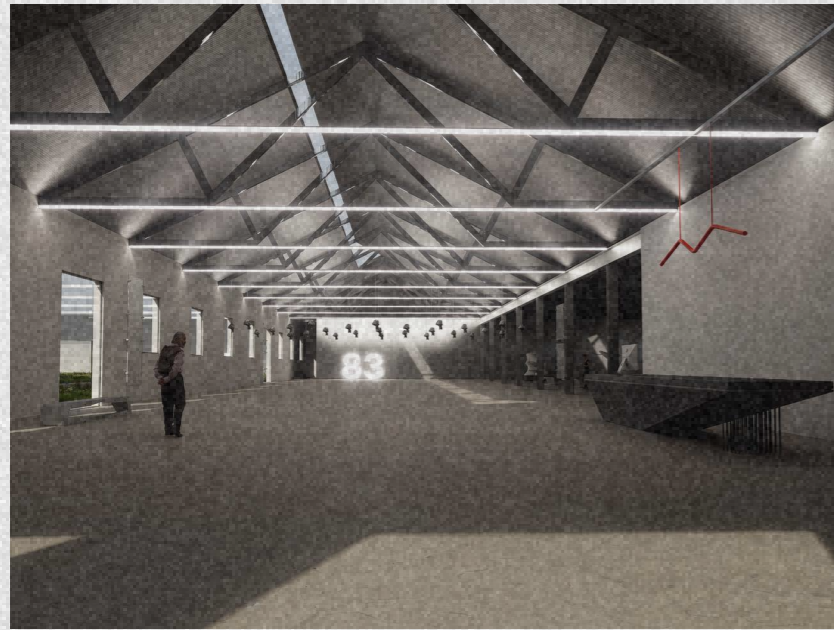
FLOORPLAN - BARRACK B



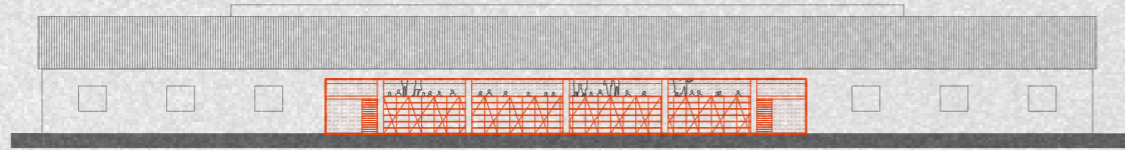
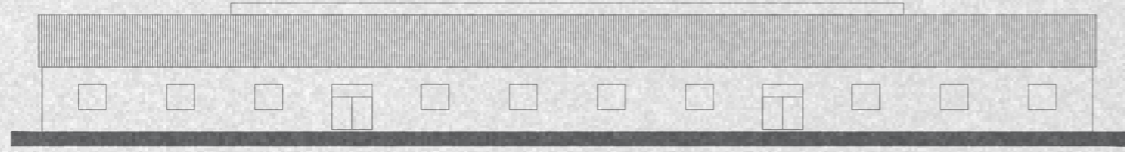
SECTION - BARRACK B



2ND FLOOR - BARRACK B

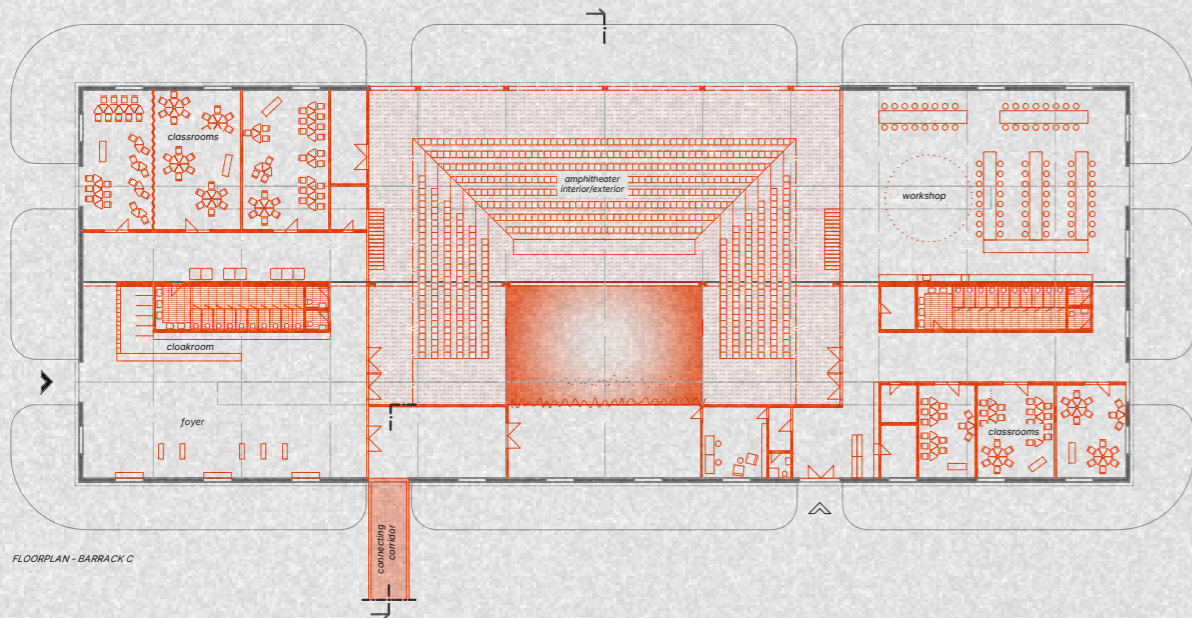


**BARRACK C** // Classroom Complex, Amphitheater

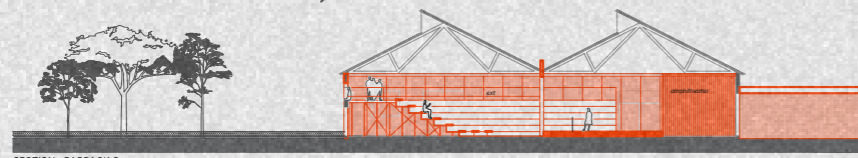


*The roof of the hall shelters the amphitheatre like an umbrella, unfolding it toward the open landscape.  
The amphitheatre thus from outside becomes the building's stage.*

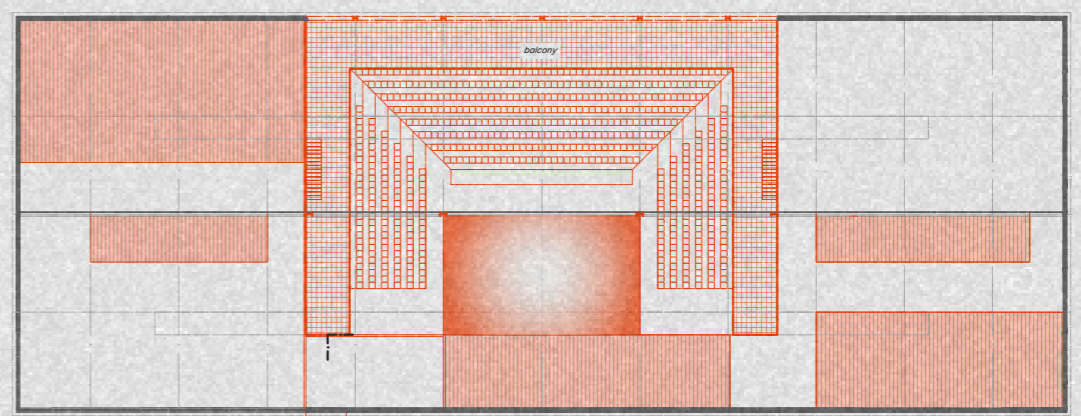
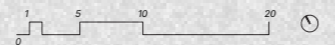
Concept



FLOORPLAN - BARRACK C

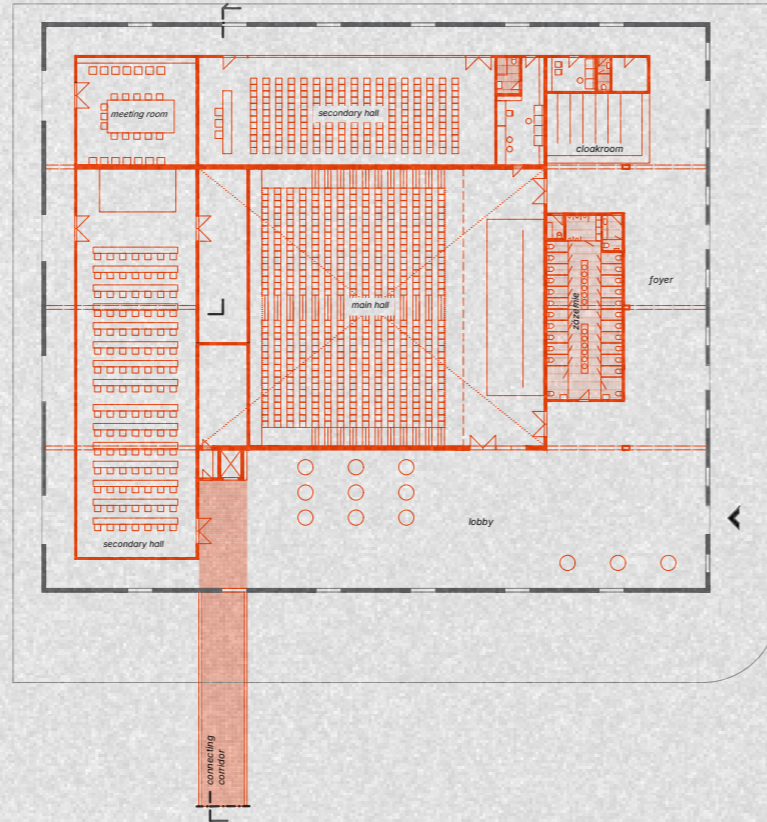


SECTION - BARRACK C



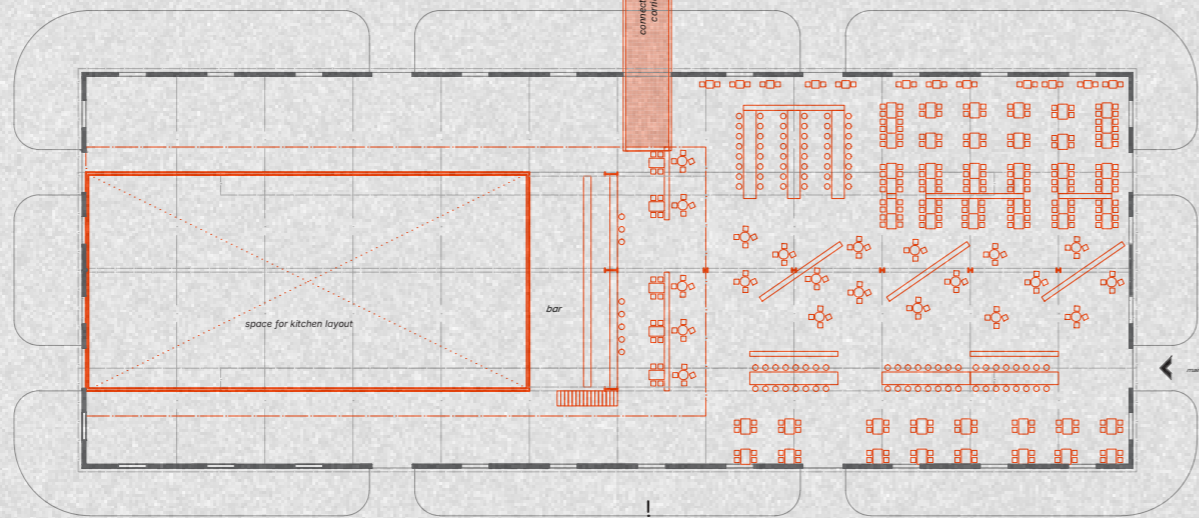
FLOORPLAN - BARRACK C

**BARRACK E // Conference Room Complex**

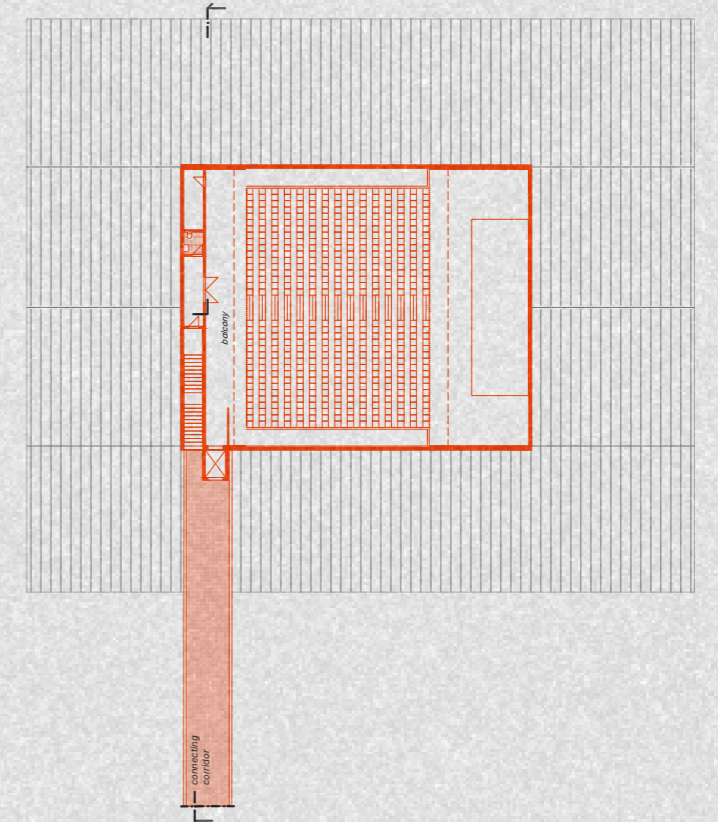
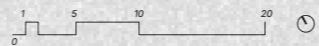


FLOORPLAN - BARRACK E

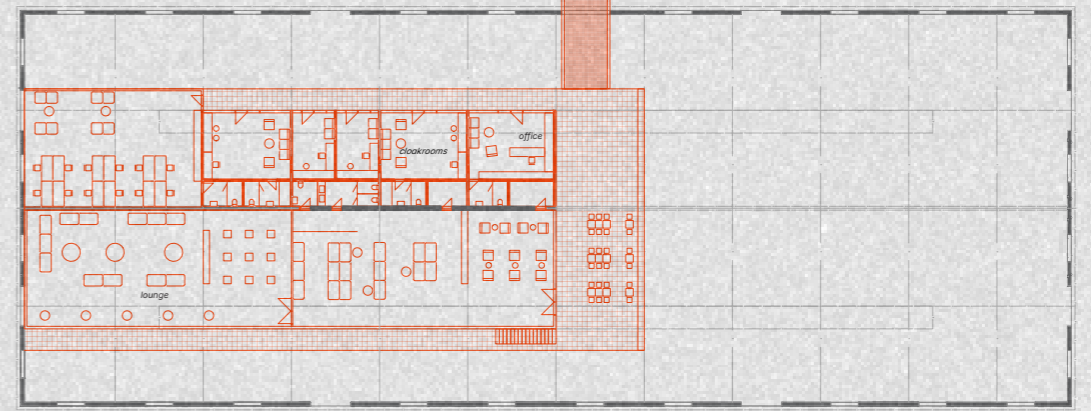
**BARRACK D // Conference Room Complex - gastro**



FLOORPLAN - BARRACK D

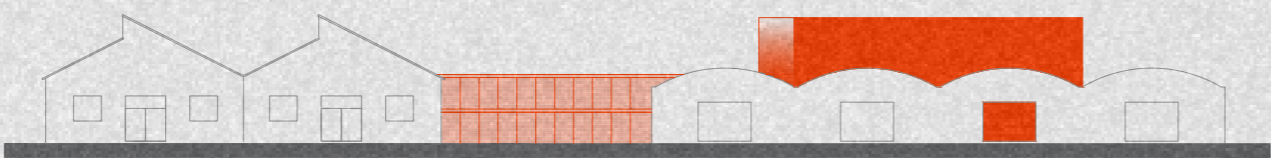
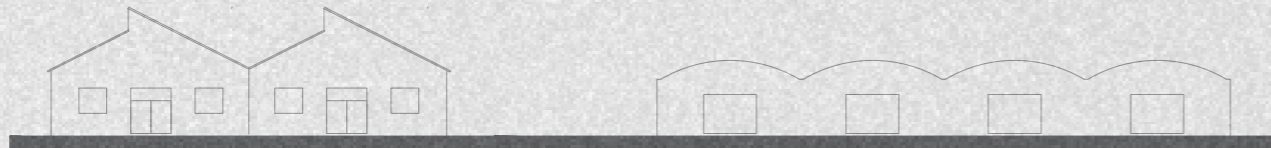


2ND FLOOR - BARRACK E

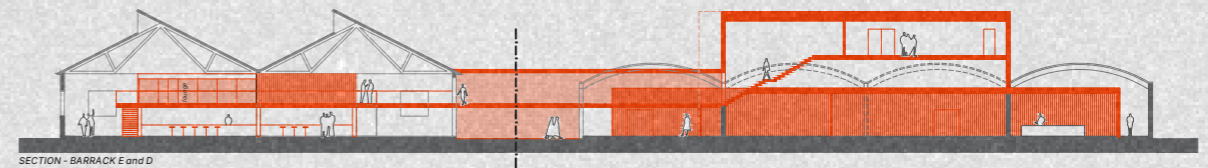


2ND FLOOR - BARRACK D

Concept



A clearly articulated insertion of the main hall volume, with a functional multi-level linkage to the neighbouring structure.



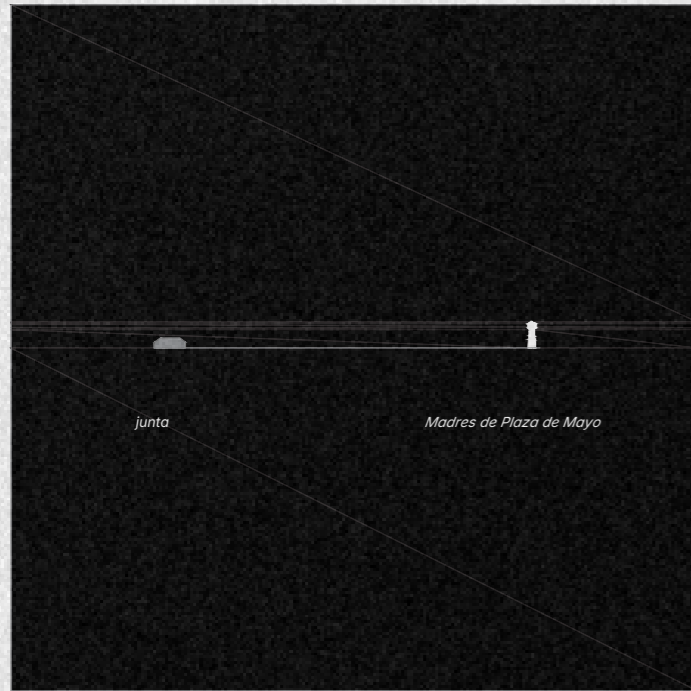
SECTION - BARRACK E and D



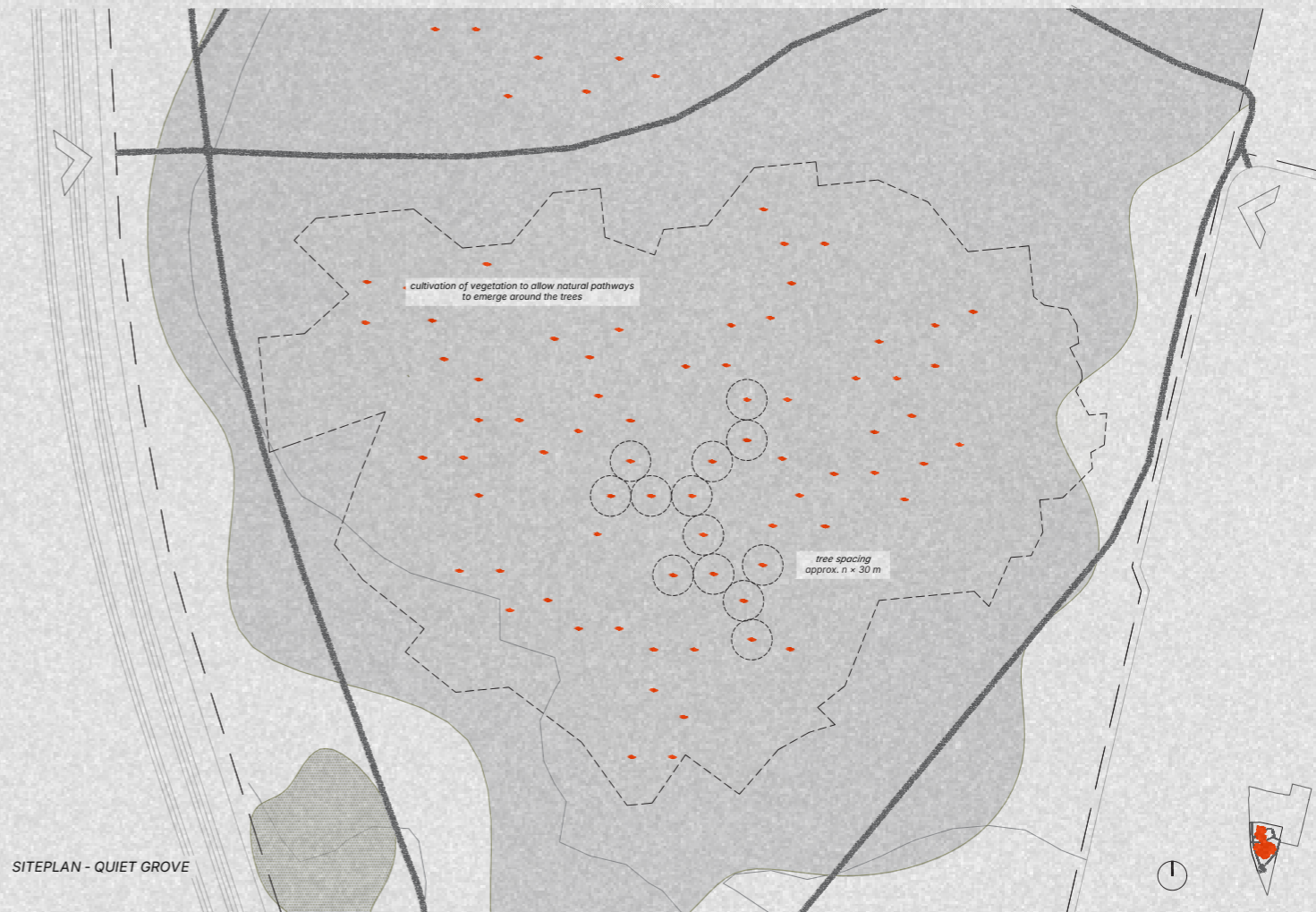
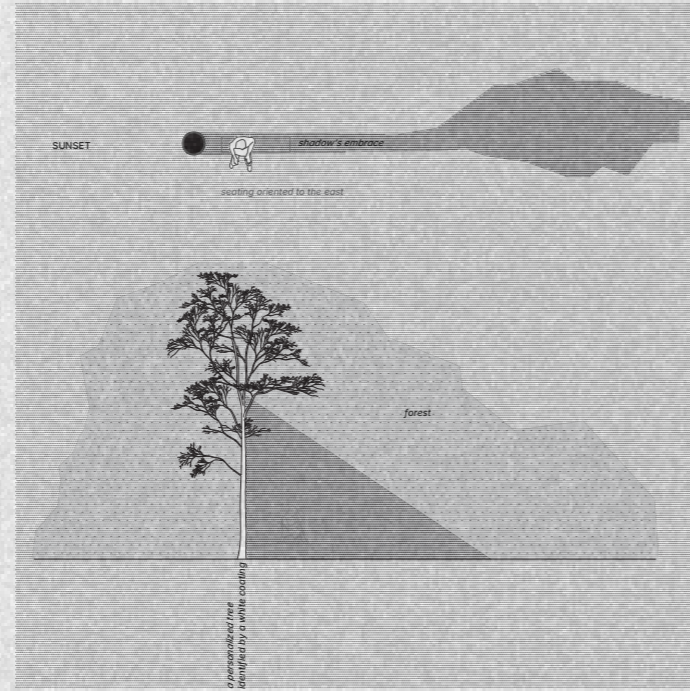
## 2 QUIET GROVE

The water tower marks the final threshold between the barracks and the natural forested area, a zone that once formed an implicit barrier, a layer of protection and concealment, hiding the places where the greatest atrocities of the site occurred. In the conceptual narrative, the tower embodies the figure of a mother standing against the junta (represented by the barracks) tall, courageous, fighting for her child, carrying a white scarf.

The passage through the natural core of the areal, grove, is intended to become a symbolic path of calming and grounding. It is meant to bring the visitor into presence. It also aims to personalise a specific tree chosen by the mother: a tree she marks with white paint, beside which she places a bench deliberately oriented toward the cardinal directions. A tree in which the mother seeks to find her lost child. She may return to it; its shade envelops and embraces her, allowing her to experience a sense of presence, spiritual closeness to the person she has lost.



symbolism of white scarves



### 3 MEMORIAL ZONE

The concept of the memorial zone is built on cultivated, simple, yet powerful and expressive motifs. At the site where the most brutal acts occurred — Galpón 9 — the design highlights and exposes it, declaring: **this place matters**. The area is symbolically defined as a square made of rubble, painted white like an exclamation mark in the landscape — a surface that cannot be stepped on. Visitors are forced to view Galpón 9 from a distance, as an object one does not enter, honouring the victims through this enforced separation. This distance and the impossibility of stepping onto the surface also reflect the helplessness, disconnection, and paralysis experienced by the families of the disappeared. The rubble painted white creates a stark contrast — something destroyed, repulsive, covered in white: a symbol of masking the truth, which inevitably comes to light. The site of the mass-grave discovery is conceived as a large gravestone, levitating on thin columns. It is constructed from thin-walled steel tubes forming a grid that allows light to filter down into the excavation zone, bringing with it the symbolism of revelation. A key part of the concept is modularity. It speaks of incompleteness — of the unknown extent of the burial site. Its ability to expand and connect to further excavations becomes a powerful symbol of the ongoing investigative process and the continuous uncovering of truth.



Excavation zone - mass grave



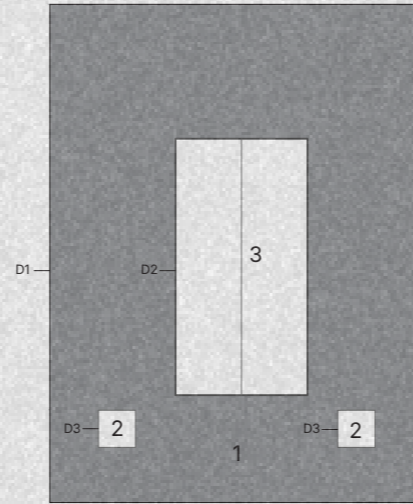
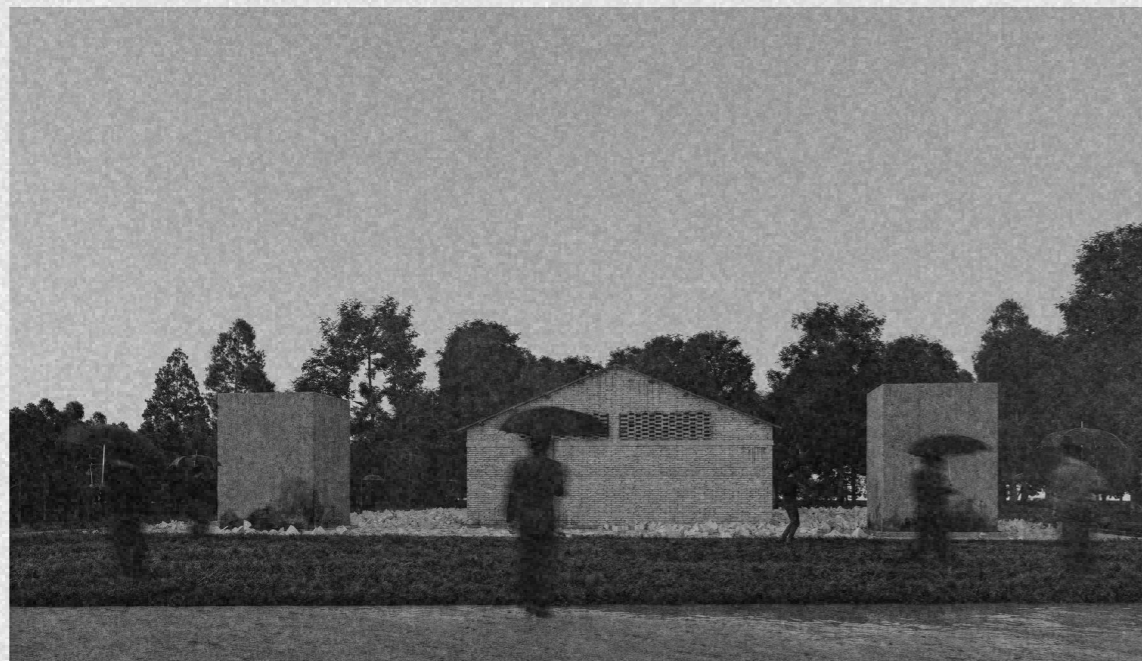
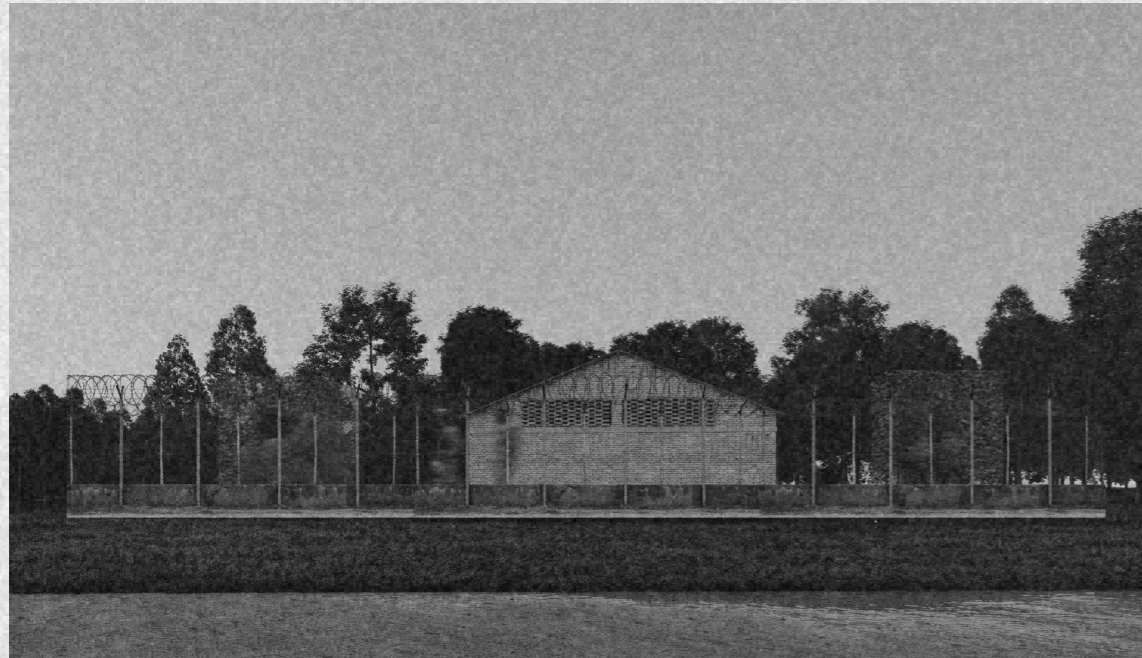
Galpón 9

photos from site,  
source: internet

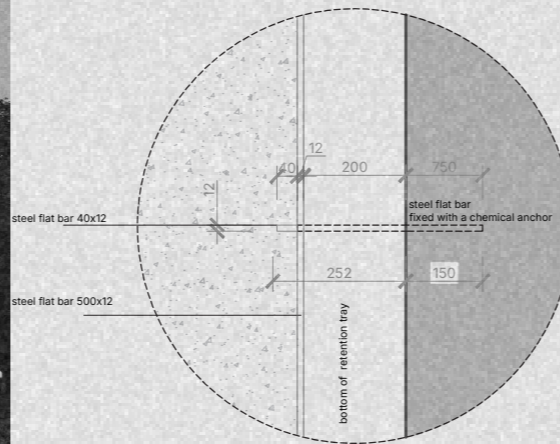


Galpón 9, Artwork M9

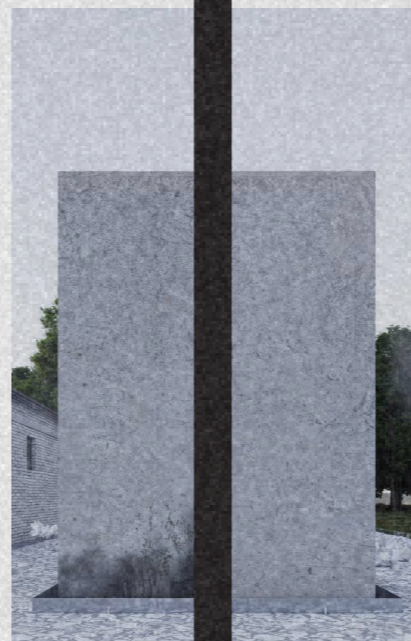
The design aims to draw attention to the now "erased" space where the most brutal acts took place. The overall concept of the memorial area is built on highlighting this place in the landscape through a contrasting white surface. The ground is formed from rubble of the surrounding demolished barracks, painted white. Both the rubble and the soil are witnesses to the crime — and for that reason, they must remain active participants in the creation of the memorial.



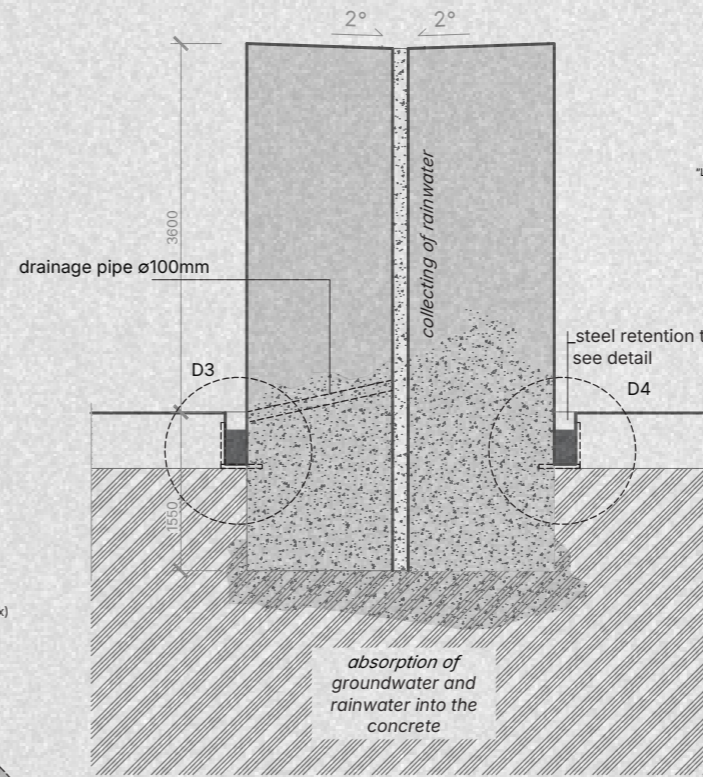
Galpón 9 SITEPLAN  
 1 surface from debris  
 2 artwork "M9"  
 3 Galpón 9 - stabilized and conserved building  
 re-use of demolition debris (brick-concrete-ceramic mix)



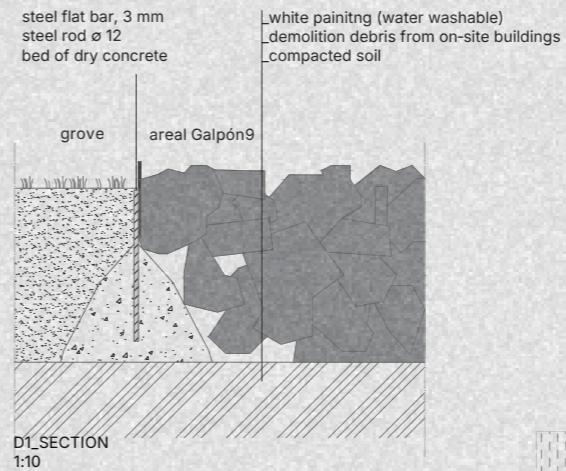
TIME



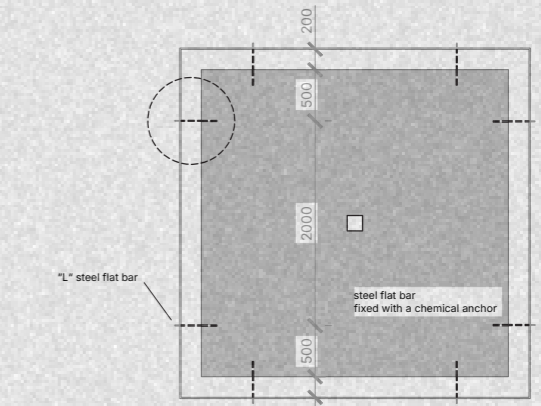
mold = future  
 time does not heal wounds,  
 marks hopelessness from past  
 FAD STU, Brno, 2016 present



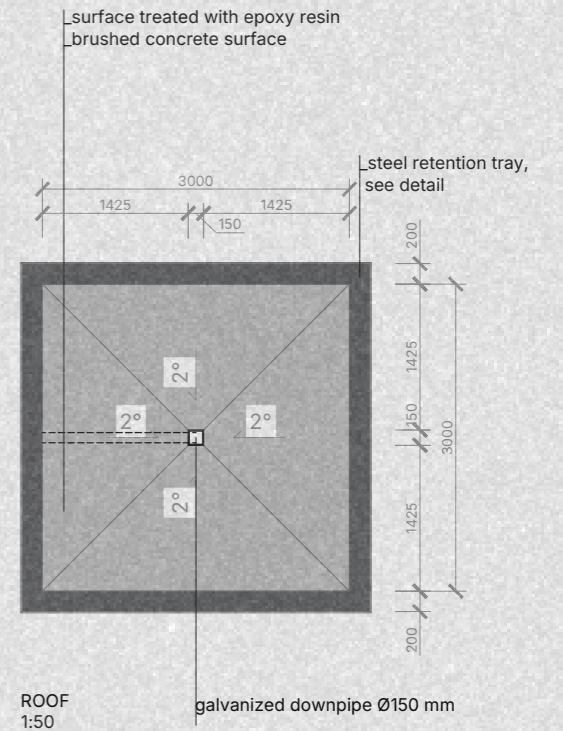
SECTION 1:50



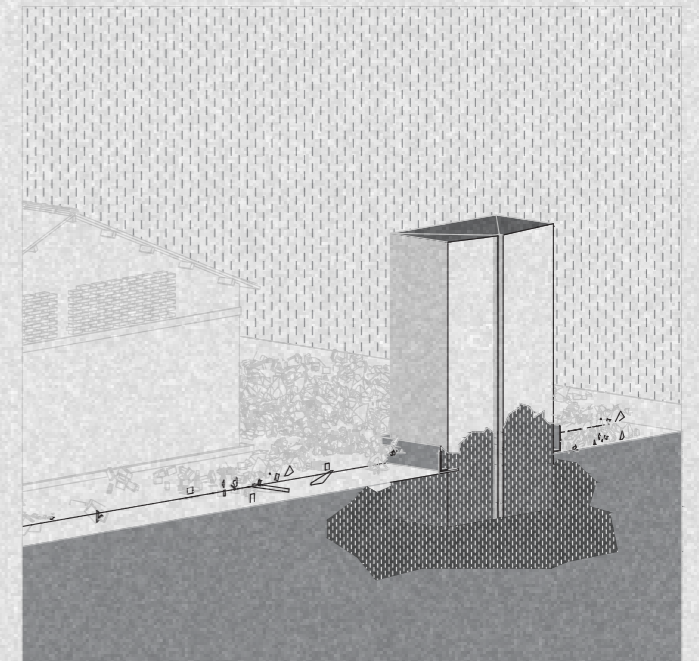
D1\_SECTION 1:10



D4\_Retention tray 1:50

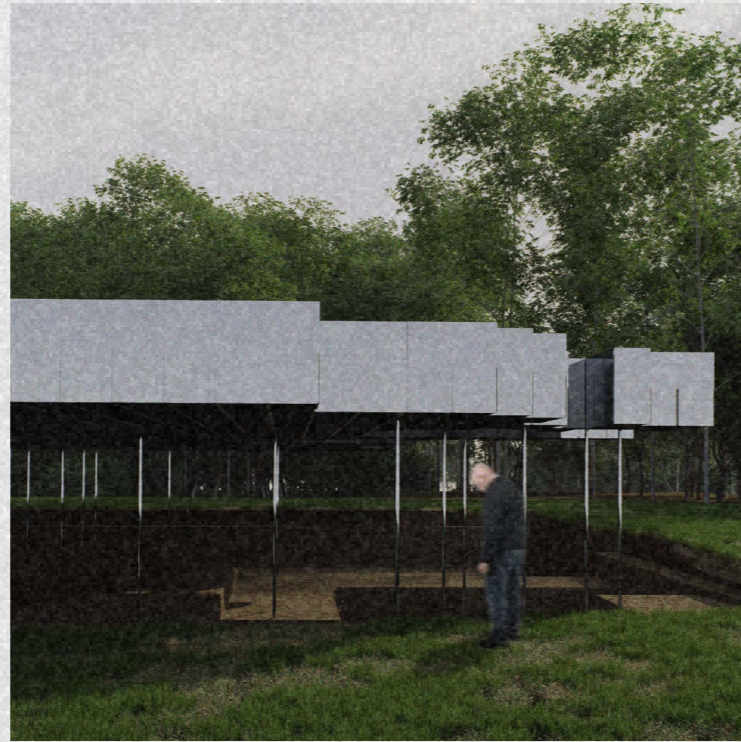


ROOF 1:50

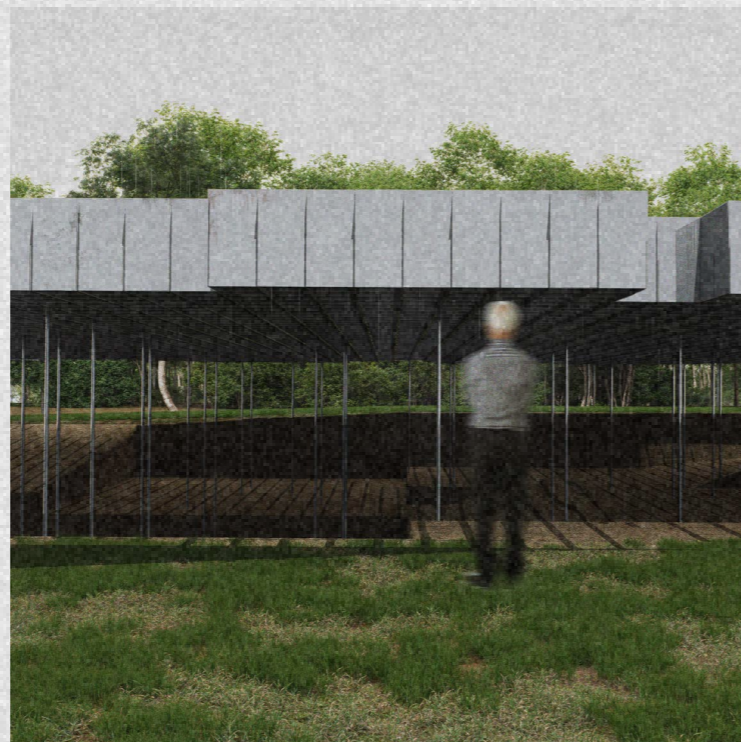
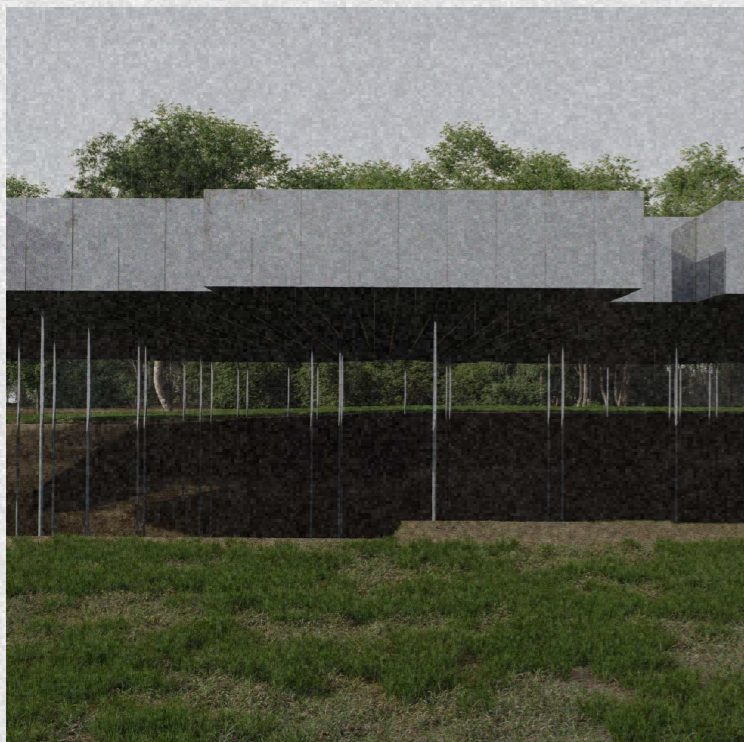


The surface of the cube is designed from sandblasted concrete, whose texture and material properties allow it to absorb water. Due to the grading and routing of rainwater, however, the cube absorbs moisture only from the ground. This intentional upward absorption represents the presence of the past embedded in the soil — a layer that carries memory. It remembers the dark and tragic acts that occurred here, and these memories manifest on the cube as a black, mould-like stain rising through the untreated concrete surface.

**GRID, Memoria Abierta**



The memorial concept is grounded in a modular grid structure that allows the excavation zone to expand over time. This framework becomes a metaphor for an investigative process that remains unfinished — a search still unfolding, still revealing what has long been hidden. The grid serves as a temporary protective layer during forensic work, yet it continues to grow as new findings emerge. Its ability to extend and adapt reflects the uncertain boundaries of the burial site and symbolizes the ongoing effort to uncover truth, layer by layer.



**10/12/1983**

From the front, the memorial's grid appears as a solid, monolithic mass, yet in reality it is formed from a delicate steel structure. Its permeability allows sunlight to reach the excavation zone only during the period marking the fall of the dictatorship, thus architecturally symbolising the moment when the crimes were revealed and the investigation began. Memorial works with the contrast between mass and void, concealment and disclosure — an architectural image of truth emerging into the light.

