

Phytocultural Sanctuary



Context SMT

R9

The project site, linked to the Memory Park (formerly the Arsenal), holds fundamental strategic relevance due to its direct connection to National Route 9. This artery acts not only as a structural axis at the provincial level but also as a logistics and mobility corridor on a national scale. To the south, the route ensures connectivity with key nodes such as Santiago del Estero, Córdoba, and Buenos Aires, while to the north, it links the site to Salta and Jujuy. This privileged location makes the sector a hub of great potential, transforming the site into an essential articulation point for regional development and territorial integration.



*Memory Park (former Arsenal) as a provincial and national convergence point.

The proposed green space transcends its recreational function to position itself as a key element in the urban resilience of San Miguel de Tucumán. Given the region's climatic characteristics—defined by intense rainfall leading to recurring floods—the site's scale and surface area act as an essential hydrological absorption lung for the urban ecosystem. This stormwater management system, integrated into the park's design, mitigates the negative impacts of soil sealing and improves thermal comfort for citizens. Simultaneously, the project acknowledges the site's historical significance, turning the Memory Park into a space for reflection where heritage preservation and nature coexist. Thus, the proposal not only recovers a strategic area for social well-being but also consolidates a landmark of collective memory, ensuring that the urban environment develops with a sustainable, human-centric, and past-conscious approach.

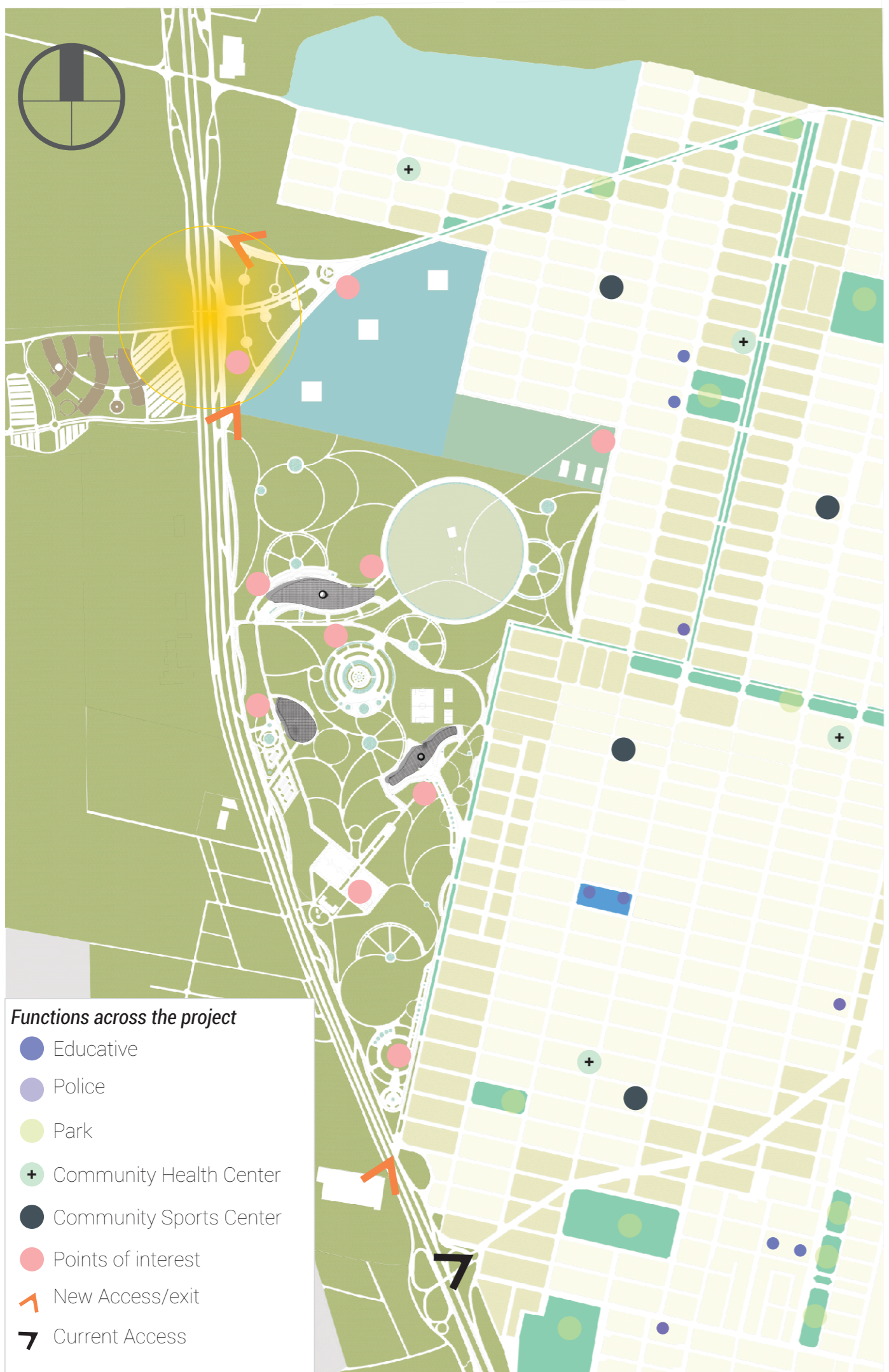


Urban Phytocultural Sanctuary

For the urban project it is considered that the regulation of the street grid and an urban completion that strengthens spatial continuity. It is proposed to develop a boulevard as the edge of the new park, separating the old and new neighborhoods and establishing different densities and land uses.

Furthermore, the integration of complementary equipment, abundant public green spaces, and sustainability strategies will be prioritized, also ensuring universal accessibility and an efficient connection to the metropolitan transport system.

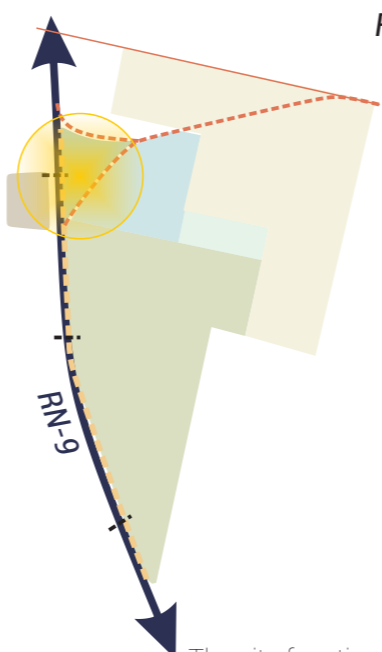
Reinforcing the connection with the Sanctuary and its history. Around the preservation circle, the idea is to strengthen protection by generating different functions that serve as vantage points of the site, where people can learn from it while enjoying the park.



- Functions across the project**
- Educative
 - Police
 - Park
 - + Community Health Center
 - Community Sports Center
 - Points of interest
 - ↗ New Access/exit
 - 7 Current Access

Functions across the project

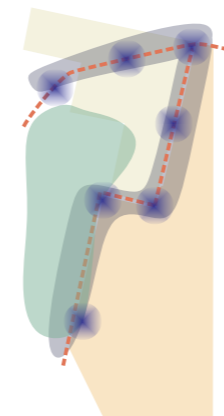
- New neighborhood
- Plant nursery
- Park
- Pelli's new building
- - - Boulevard
- - - Service road
- - - Peatonal Bridge
- New urban node
- A civic/urban campus *



*The site functions as a multi-use civic campus that integrates a hospital, a university, and a market.

Urban density

*Higher density around the boulevards. Provides opportunities to existent neighborhoods and also for the new neighborhood to complete services that are going to be necessary for the sanctuary.

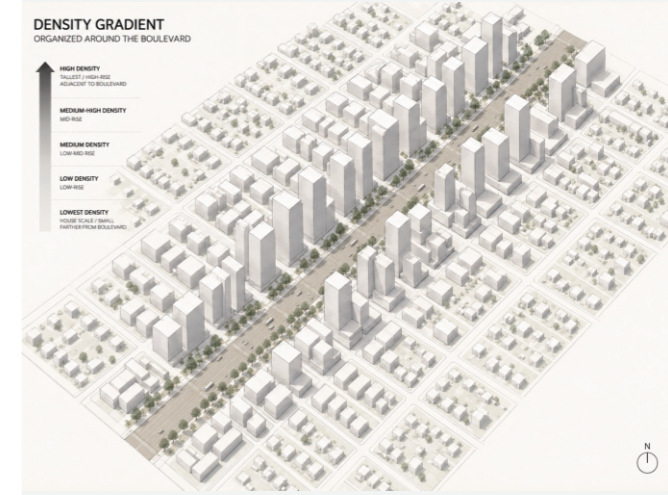


- - - Boulevard
- New neighborhood
- Sanctuary
- Existent neighborhood
- Emerging centralities

Boulevards



Urban density



Park



Civic campus



Pedestrian bridge over National Route 9



Phytocultural Sanctuary

Review

The project emerges from a comprehensive analysis of the site's geographical, historical, and sociocultural conditions, aiming to consolidate a public cultural space that keeps the memory of the Arsenal Azcuénaga alive. The intervention also addresses the urban demands of both the sector and the municipality, approaching the project across all scales to ensure seamless integration with its surroundings. The proposal prioritizes the protection of the park from urban noise and pollution, ensuring that users feel held within an environment of respect and calm.

We propose a Phytocultural Sanctuary. This space is conceived not only through its symbolic function as a Memorial Park (CCD TyT) but also as a vital node within the urban fabric. Given the scarcity of permeable soil and vegetation mass in San Miguel de Tucumán (SMT), its preservation is imperative in light of current climate conditions.

The term "sanctuary" alludes to present-day protection—a historical debt owed to the victims of the arsenal, both identified and anonymous. Furthermore, the concept integrates environmental awareness: public green spaces are fundamental pillars for our future. Thus, the project functions as an act of historical reparation for what we could not prevent, while simultaneously serving as a reminder of our civic responsibility as Argentine citizens and inhabitants of the planet: the commitment to build a city with social, environmental, and cultural conscience. nt of respect and calm.

From an architectural perspective, we express this "gentleness" through an organic implantation, seeking a subtle and respectful insertion into the terrain. The paths are designed to foster exploration and learning, allowing users to apprehend the site and its history. These walkways connect the complex's various buildings in a fluid and harmonious manner, articulating micro-spaces that offer different levels of privacy and activity.

Finally, the Zen sector—enveloped in vegetation and reflecting water—stands as a refuge from urban noise. This space of introspection and calm facilitates intimate gathering and the commemoration of those who disappeared.



Architectural scale

When designing the project, both the natural slope of the site and the local climatic conditions are taken into account. As one of the largest green spaces in San Miguel de Tucumán, and considering that the province experiences abundant rainfall, artificial lagoons are proposed throughout the site. These lagoons function as water retention and storage elements, while also being integrated into the landscape design and strengthening the relationship between architecture, nature, and environmental infrastructure.



Split the functions across the park

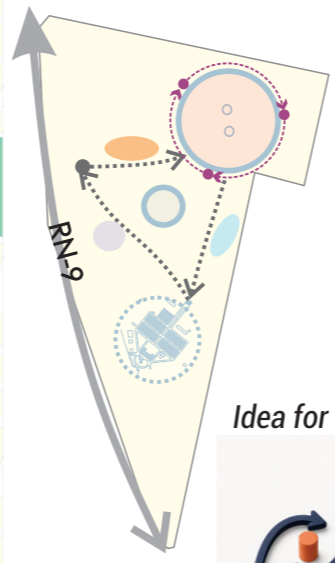
- Cultural Center (Museum)
- Institutional (Educative)
- Cultural (Amphitheater)
- Perimetral circulation
- Internal circuit

Programmatic Functions

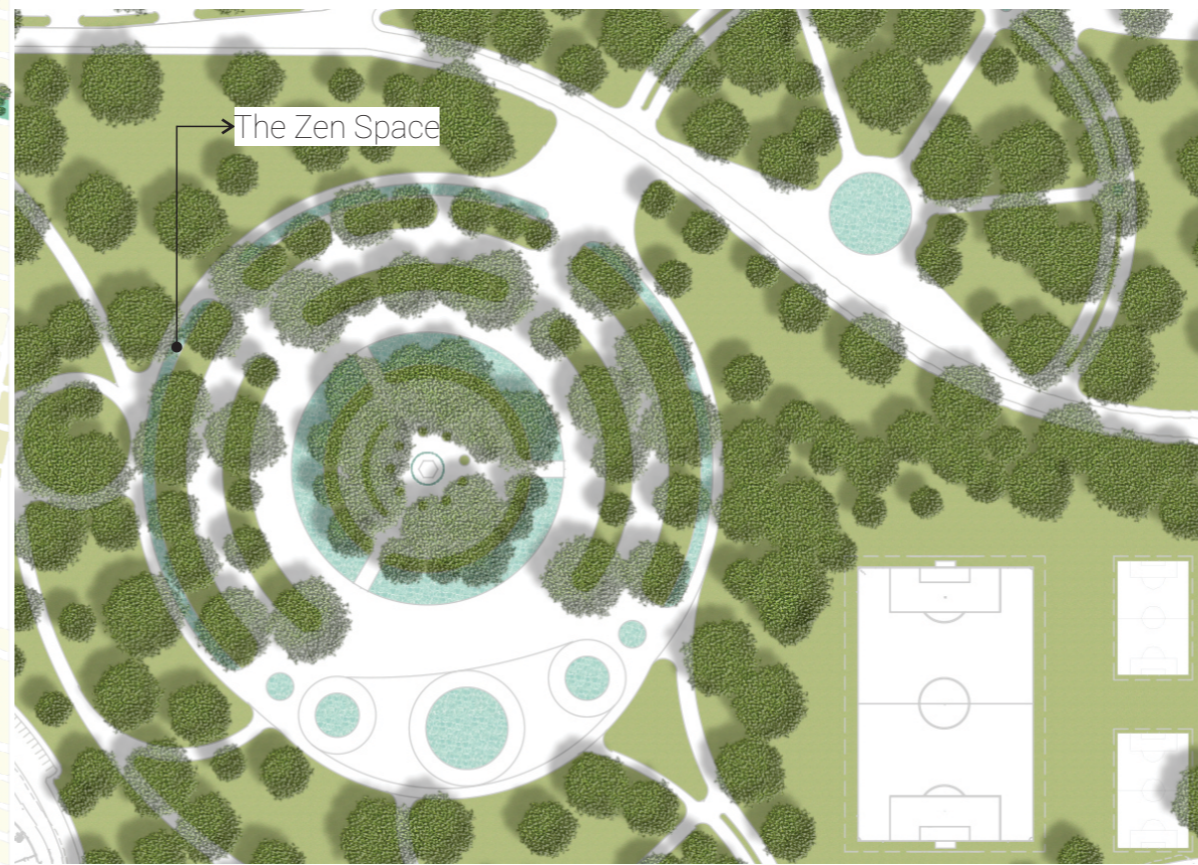
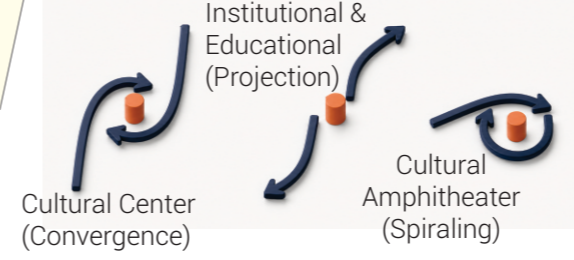
Cultural Building (Heritage & History):
This facility is dedicated to showcasing the history and relevant artifacts related to the former Arsenal, serving as a space for memory and historical interpretation.

Cultural Building (Amphitheater):
A cultural venue designed with a multi-functional interior, capable of hosting a wide range of artistic and community events.

Institutional & Educational Building:
A facility serving the Las Talitas area, acting as a complementary infrastructure for the National University of Tucumán (UNT) to support academic and research activities.



Idea for architecture



Water features

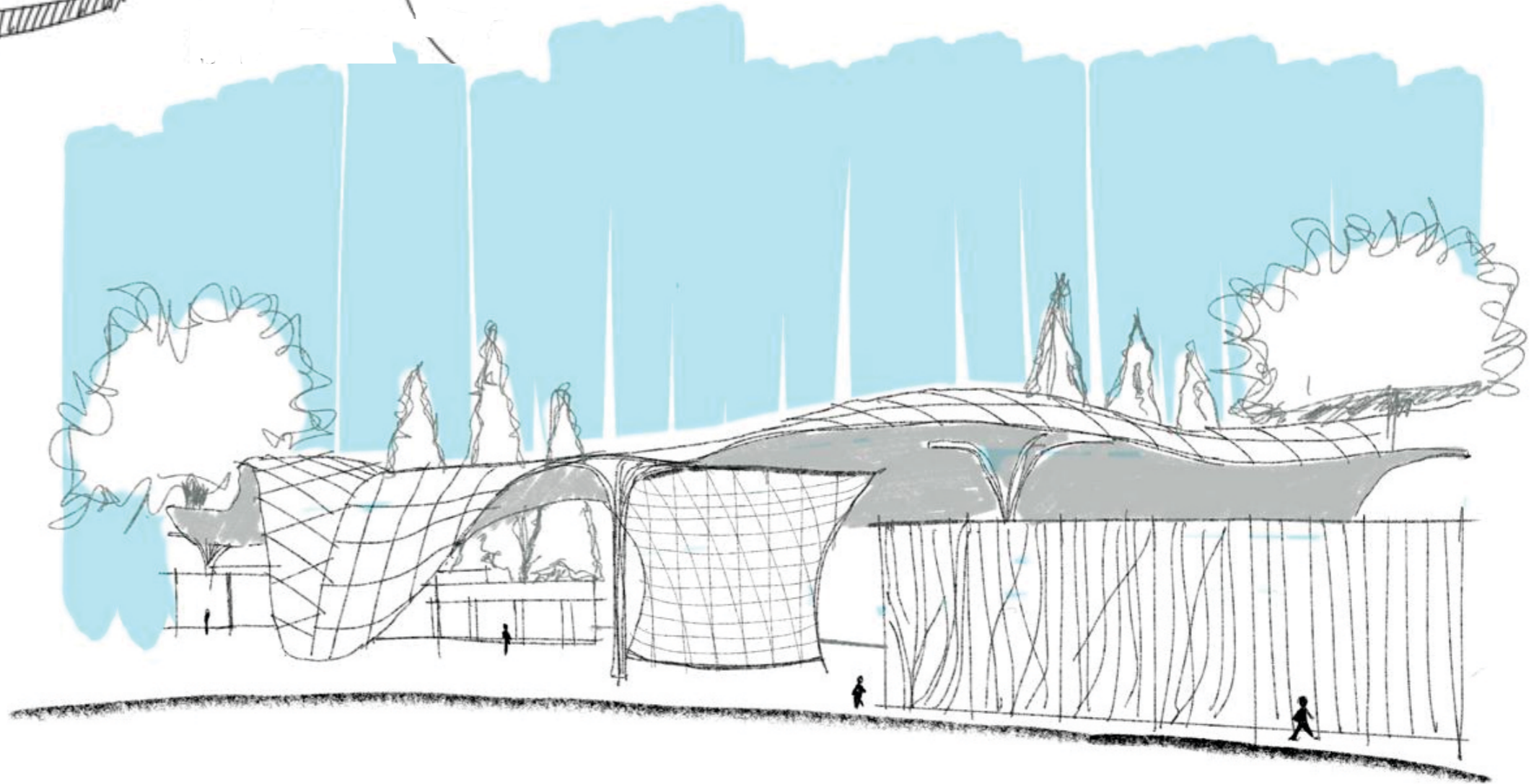
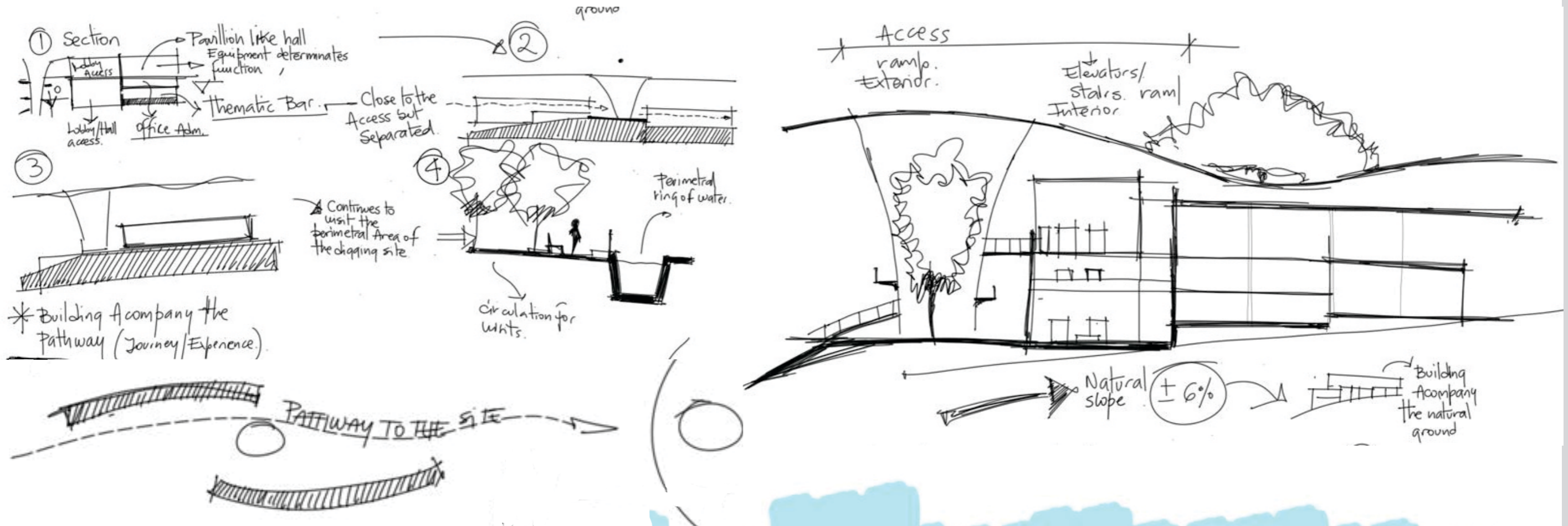


Atmosphere and Sustainable Mobility

Within the site, an "aura of calm" and tranquility has been designed to reinforce the project's reflective theme. To preserve this immersive experience, private vehicular circulation is restricted to the outer perimeter, limiting access exclusively to service areas and building entrances. Internal mobility is managed through an electric public transport system, designed to connect the site with the surrounding urban fabric efficiently and quietly, facilitating access and egress without compromising the serenity of the public space.

Creative Process

The project is articulated through an ascending journey that, via a ramp or elevated platform, leads the user toward a focal point within the cultural center. This directionality, defined by rising above the ground, guides movement and the perception of space. Finally, as a gesture of grace and continuity, the design descends in a controlled manner, "releasing" the user gently back onto the natural ground, seamlessly integrating the architecture with the existing landscape.

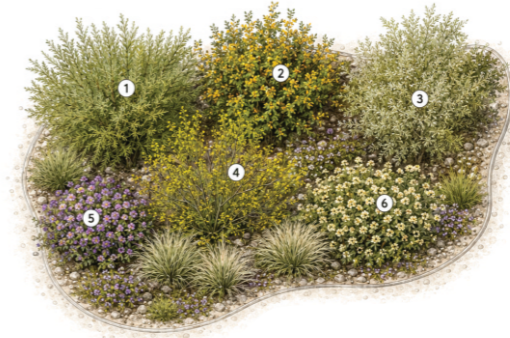


Landscape Architecture

For the landscape design proposed for the park, we use abundant native vegetation that complements the architecture and enriches the experience of moving through the space. The proposal appeals to the senses through aromas, variations in temperature, more humid areas associated with water features, and the presence of the sound of water and local fauna.



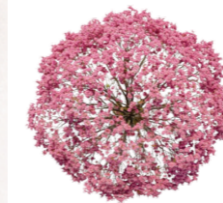
- ① *Acacia Aroma*
- ② *Caesalpinia gilliesii*
- ③ *Baccharis Salicifolia*
- ④ *Lantana Camara*
- ⑤ *Verbena bonariensis*
- ⑥ *Glandularia peruviana*



- ① *Acacia Aroma*
- ② *Caesalpinia gilliesii*
- ③ *Geoffroea decorticans*
- ④ *Parkinsonia aculeata*
- ⑤ *Glandularia peruviana*
- ⑥ *Turnera sidoides*



Anadenanthera colubrina



Handroanthus impetiginosus



Aspidosperma



Handroanthus chrysotrichus

Landscape Strategy and Spatial Organization

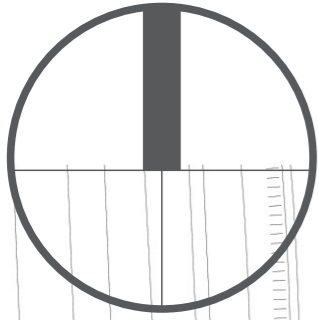


The organization of the park follows a gradient of privacy and usage, moving from open public areas at the perimeter toward quieter, more exclusive spaces within the research zone. The configuration of the pathways reflects this concept: while paths adopt organic, curved forms throughout the site to encourage contemplative movement and pauses, they become linear only when they intersect with the Arsenal building, establishing a direct dialogue with its historical geometry.

The design seeks to create a symbolic and respectful atmosphere, integrating sporadic spaces intended for dialogue, introspection, and contemplation in direct contact with nature. The landscape strategy involves an active intervention on the existing flora: a remediation and selection process will be carried out to remove parasitic species that have proliferated due to the site's long abandonment, thus fostering a balanced coexistence with native species that ensure the health and sustainability of the ecosystem.

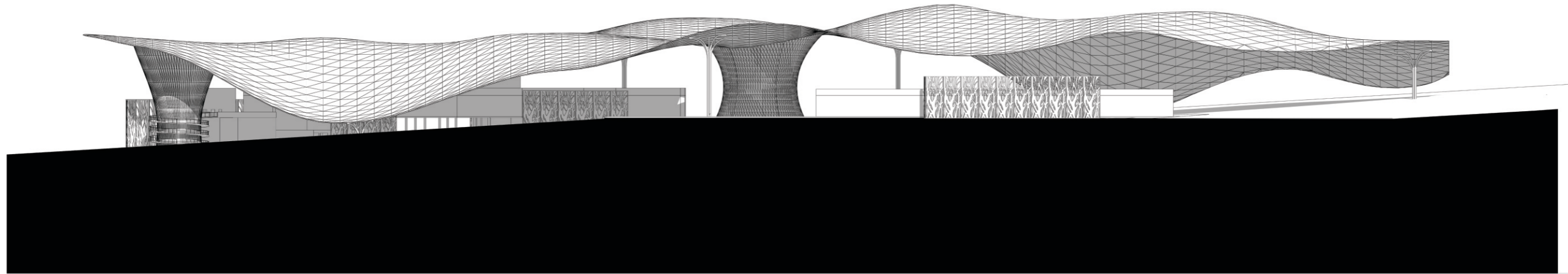


Cultural Center (Museum) building floor plan

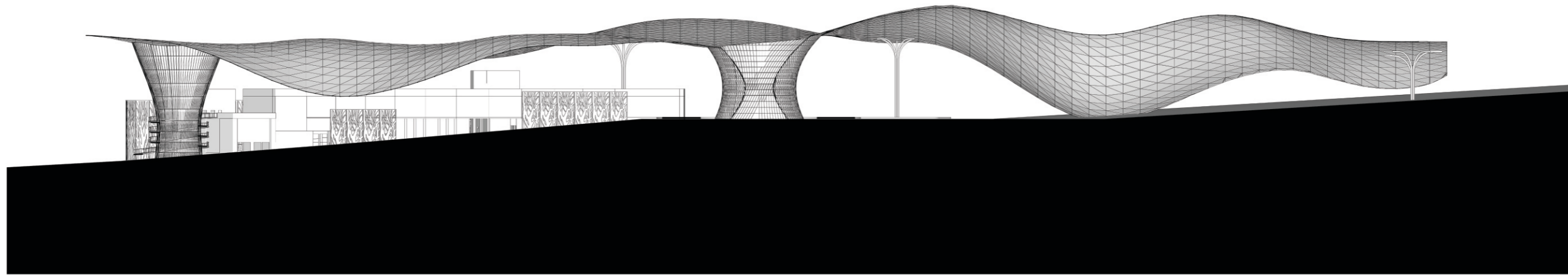


5m 25m

Cultural Center (Museum) Section and Front Elevation



5m 15m
10m 25m



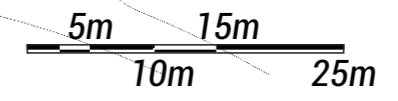
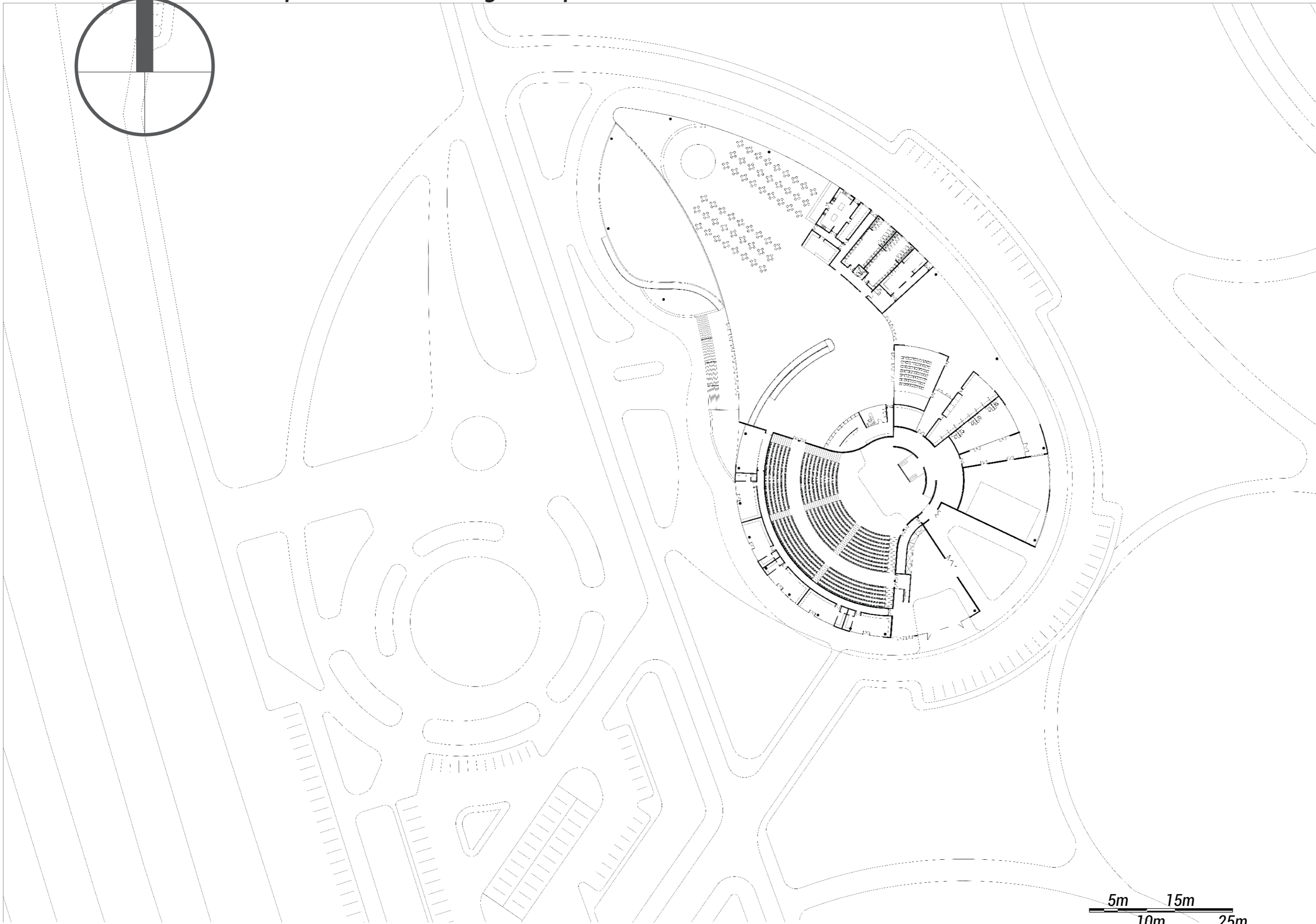
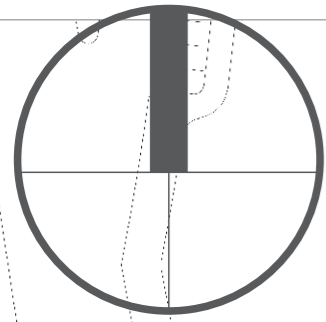
5m 15m
10m 25m

Cultural Center (Museum) Render

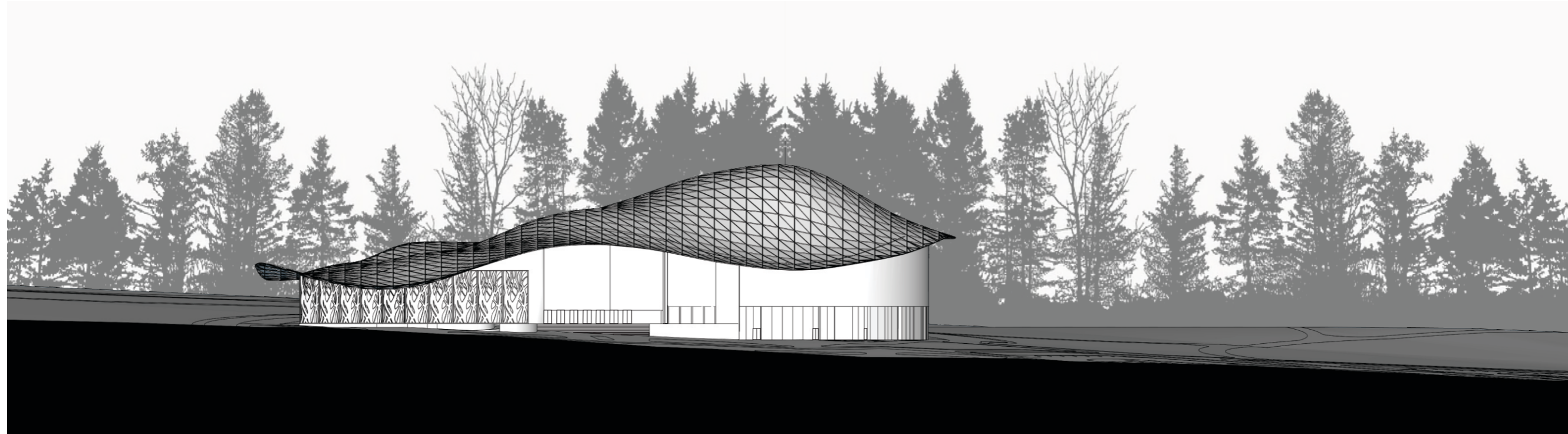


PHYTOCULTURAL SANCTUARY

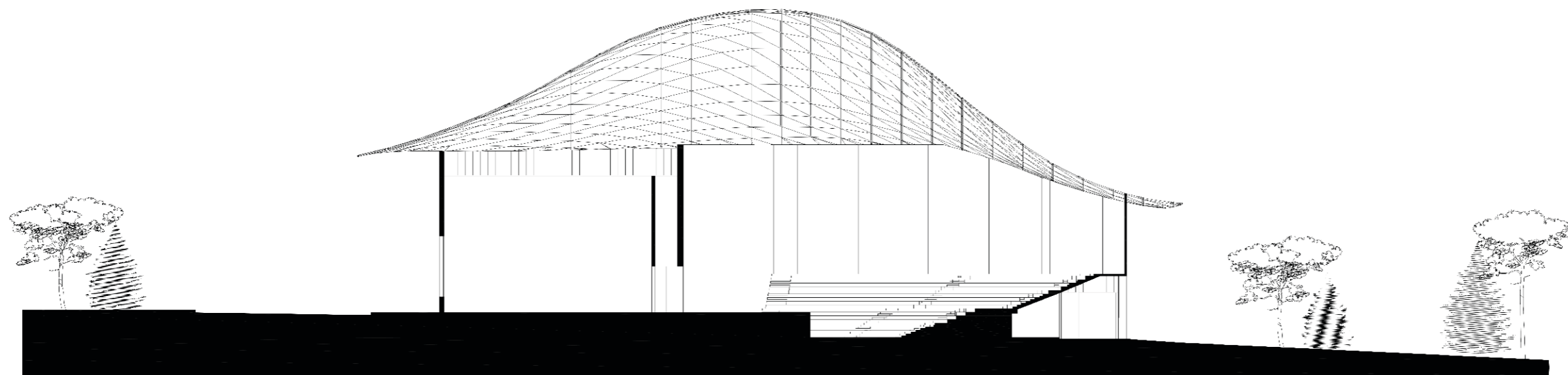
Amphitheater building floor plan



Amphitheater building Section and Front Elevation



5m 15m
10m 25m



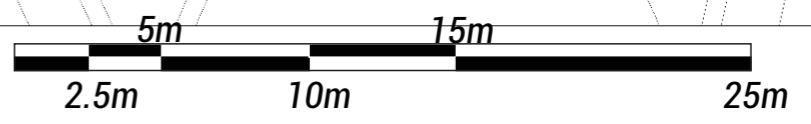
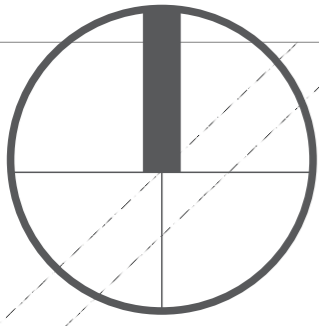
5m 15m
10m 25m



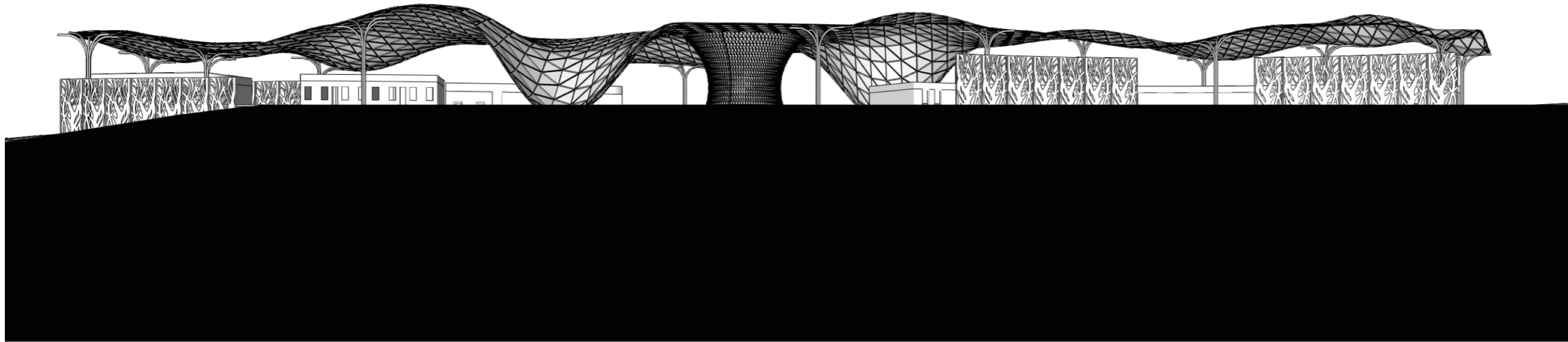
PHYTOCULTURAL SANCTUARY

Educational facility floor plan

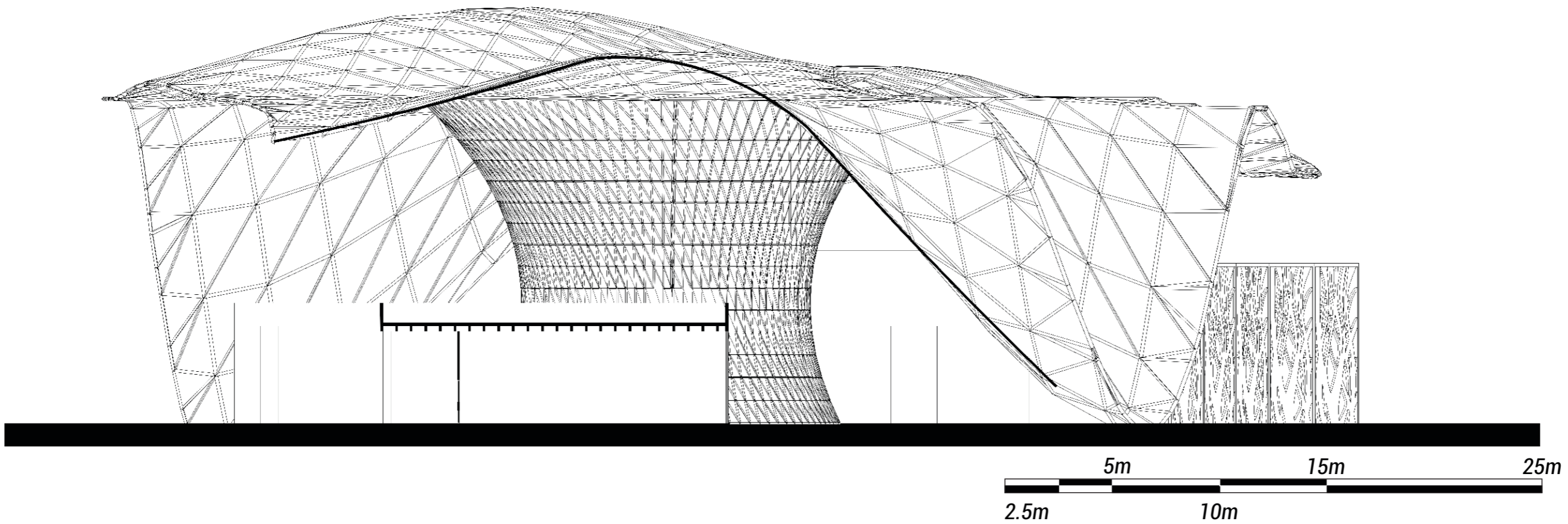
PHYTOCULTURAL SANCTUARY



Educational Facility – Section and Front Elevation



10m 25m
5m 15m



2.5m 5m 10m 15m 25m

Educational facility Render



PHYTOCULTURAL SANCTUARY



PHYTOCULTURAL SANCTUARY